



# Full wwPDB X-ray Structure Validation Report ⓘ

Aug 30, 2023 – 01:07 AM EDT

PDB ID : 3M45  
Title : Crystal structure of Ig1 domain of mouse SynCAM 2  
Authors : Yue, L.; Modis, Y.  
Deposited on : 2010-03-10  
Resolution : 2.21 Å(reported)

This is a Full wwPDB X-ray Structure Validation Report for a publicly released PDB entry.

We welcome your comments at [validation@mail.wwpdb.org](mailto:validation@mail.wwpdb.org)

A user guide is available at

<https://www.wwpdb.org/validation/2017/XrayValidationReportHelp>

with specific help available everywhere you see the ⓘ symbol.

The types of validation reports are described at

<http://www.wwpdb.org/validation/2017/FAQs#types>.

---

The following versions of software and data (see [references ⓘ](#)) were used in the production of this report:

MolProbity : 4.02b-467  
Mogul : 1.8.5 (274361), CSD as541be (2020)  
Xtrriage (Phenix) : 1.13  
EDS : 2.35  
Percentile statistics : 20191225.v01 (using entries in the PDB archive December 25th 2019)  
Refmac : 5.8.0158  
CCP4 : 7.0.044 (Gargrove)  
Ideal geometry (proteins) : Engh & Huber (2001)  
Ideal geometry (DNA, RNA) : Parkinson et al. (1996)  
Validation Pipeline (wwPDB-VP) : 2.35

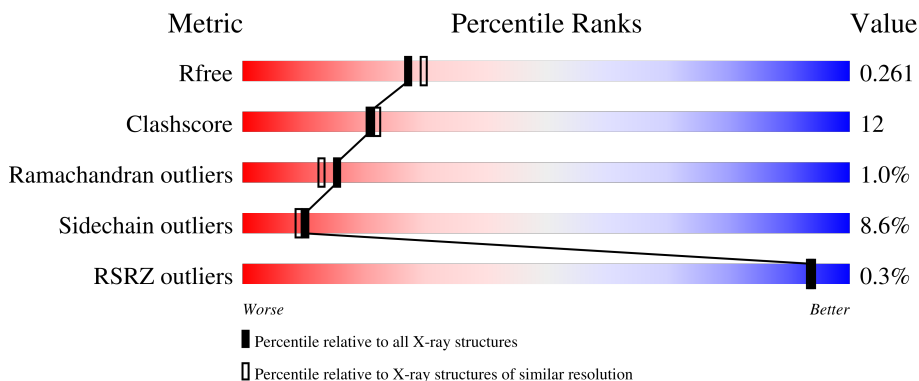
# 1 Overall quality at a glance i

The following experimental techniques were used to determine the structure:

*X-RAY DIFFRACTION*

The reported resolution of this entry is 2.21 Å.

Percentile scores (ranging between 0-100) for global validation metrics of the entry are shown in the following graphic. The table shows the number of entries on which the scores are based.



Metric	Whole archive (#Entries)	Similar resolution (#Entries, resolution range(Å))
$R_{free}$	130704	5912 (2.24-2.20)
Clashscore	141614	6646 (2.24-2.20)
Ramachandran outliers	138981	6543 (2.24-2.20)
Sidechain outliers	138945	6544 (2.24-2.20)
RSRZ outliers	127900	5797 (2.24-2.20)

The table below summarises the geometric issues observed across the polymeric chains and their fit to the electron density. The red, orange, yellow and green segments of the lower bar indicate the fraction of residues that contain outliers for  $\geq 3$ , 2, 1 and 0 types of geometric quality criteria respectively. A grey segment represents the fraction of residues that are not modelled. The numeric value for each fraction is indicated below the corresponding segment, with a dot representing fractions  $\leq 5\%$ . The upper red bar (where present) indicates the fraction of residues that have poor fit to the electron density. The numeric value is given above the bar.

Mol	Chain	Length	Quality of chain
1	A	108	
1	B	108	
1	C	108	
1	D	108	

The following table lists non-polymeric compounds, carbohydrate monomers and non-standard

residues in protein, DNA, RNA chains that are outliers for geometric or electron-density-fit criteria:

Mol	Type	Chain	Res	Chirality	Geometry	Clashes	Electron density
2	NAG	C	2395	-	-	-	X

## 2 Entry composition [i](#)

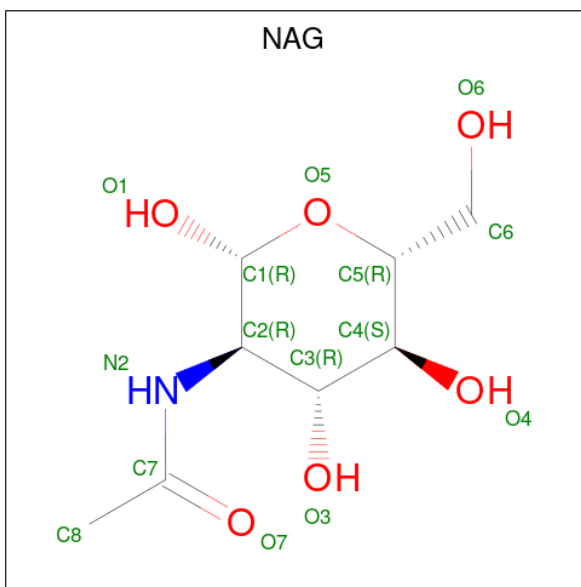
There are 3 unique types of molecules in this entry. The entry contains 3389 atoms, of which 0 are hydrogens and 0 are deuteriums.

In the tables below, the ZeroOcc column contains the number of atoms modelled with zero occupancy, the AltConf column contains the number of residues with at least one atom in alternate conformation and the Trace column contains the number of residues modelled with at most 2 atoms.

- Molecule 1 is a protein called Cell adhesion molecule 2.

Mol	Chain	Residues	Atoms					ZeroOcc	AltConf	Trace
			Total	C	N	O	S			
1	A	101	Total 787	C 493	N 133	O 158	S 3	0	0	0
1	B	101	Total 787	C 493	N 133	O 158	S 3	0	0	0
1	C	97	Total 765	C 479	N 129	O 154	S 3	0	0	0
1	D	97	Total 760	C 476	N 128	O 153	S 3	0	0	0

- Molecule 2 is 2-acetamido-2-deoxy-beta-D-glucopyranose (three-letter code: NAG) (formula: C<sub>8</sub>H<sub>15</sub>NO<sub>6</sub>).



Mol	Chain	Residues	Atoms				ZeroOcc	AltConf
			Total	C	N	O		
2	A	1	Total 14	C 8	N 1	O 5	0	0
2	A	1	Total 14	C 8	N 1	O 5	0	0

*Continued on next page...*

*Continued from previous page...*

Mol	Chain	Residues	Atoms				ZeroOcc	AltConf
2	B	1	Total	C	N	O	0	0
			14	8	1	5		
2	B	1	Total	C	N	O	0	0
			14	8	1	5		
2	C	1	Total	C	N	O	0	0
			14	8	1	5		
2	C	1	Total	C	N	O	0	0
			14	8	1	5		
2	D	1	Total	C	N	O	0	0
			14	8	1	5		

- Molecule 3 is water.

Mol	Chain	Residues	Atoms		ZeroOcc	AltConf
3	A	61	Total	O	0	0
			61	61		
3	B	60	Total	O	0	0
			60	60		
3	C	36	Total	O	0	0
			36	36		
3	D	35	Total	O	0	0
			35	35		

### 3 Residue-property plots [i](#)

These plots are drawn for all protein, RNA, DNA and oligosaccharide chains in the entry. The first graphic for a chain summarises the proportions of the various outlier classes displayed in the second graphic. The second graphic shows the sequence view annotated by issues in geometry and electron density. Residues are color-coded according to the number of geometric quality criteria for which they contain at least one outlier: green = 0, yellow = 1, orange = 2 and red = 3 or more. A red dot above a residue indicates a poor fit to the electron density ( $RSRZ > 2$ ). Stretches of 2 or more consecutive residues without any outlier are shown as a green connector. Residues present in the sample, but not in the model, are shown in grey.

- Molecule 1: Cell adhesion molecule 2

Chain A: 



- Molecule 1: Cell adhesion molecule 2

Chain B: 



- Molecule 1: Cell adhesion molecule 2

Chain C: 



- Molecule 1: Cell adhesion molecule 2

Chain D: 



## 4 Data and refinement statistics

Property	Value	Source
Space group	P 1	Depositor
Cell constants a, b, c, $\alpha$ , $\beta$ , $\gamma$	42.85Å 50.53Å 79.85Å 75.91° 77.02° 65.18°	Depositor
Resolution (Å)	50.00 – 2.21 38.51 – 2.21	Depositor EDS
% Data completeness (in resolution range)	94.0 (50.00-2.21) 94.0 (38.51-2.21)	Depositor EDS
$R_{merge}$	0.09	Depositor
$R_{sym}$	(Not available)	Depositor
$\langle I/\sigma(I) \rangle$ <sup>1</sup>	3.52 (at 2.20Å)	Xtrriage
Refinement program	REFMAC 5.6.0031	Depositor
R, $R_{free}$	0.198 , 0.245 0.217 , 0.261	Depositor DCC
$R_{free}$ test set	1383 reflections (5.03%)	wwPDB-VP
Wilson B-factor (Å <sup>2</sup> )	35.9	Xtrriage
Anisotropy	0.660	Xtrriage
Bulk solvent $k_{sol}$ (e/Å <sup>3</sup> ), $B_{sol}$ (Å <sup>2</sup> )	0.33 , 41.8	EDS
L-test for twinning <sup>2</sup>	$\langle  L  \rangle = 0.51$ , $\langle L^2 \rangle = 0.34$	Xtrriage
Estimated twinning fraction	0.089 for h,h-k,h-l	Xtrriage
$F_o, F_c$ correlation	0.95	EDS
Total number of atoms	3389	wwPDB-VP
Average B, all atoms (Å <sup>2</sup> )	45.0	wwPDB-VP

Xtrriage's analysis on translational NCS is as follows: *The largest off-origin peak in the Patterson function is 7.95% of the height of the origin peak. No significant pseudotranslation is detected.*

<sup>1</sup>Intensities estimated from amplitudes.

<sup>2</sup>Theoretical values of  $\langle |L| \rangle$ ,  $\langle L^2 \rangle$  for acentric reflections are 0.5, 0.333 respectively for untwinned datasets, and 0.375, 0.2 for perfectly twinned datasets.

## 5 Model quality i

### 5.1 Standard geometry i

Bond lengths and bond angles in the following residue types are not validated in this section: NAG

The Z score for a bond length (or angle) is the number of standard deviations the observed value is removed from the expected value. A bond length (or angle) with  $|Z| > 5$  is considered an outlier worth inspection. RMSZ is the root-mean-square of all Z scores of the bond lengths (or angles).

Mol	Chain	Bond lengths		Bond angles	
		RMSZ	# Z  >5	RMSZ	# Z  >5
1	A	1.26	3/801 (0.4%)	1.05	5/1092 (0.5%)
1	B	1.15	2/801 (0.2%)	1.04	2/1092 (0.2%)
1	C	0.92	0/778	0.95	3/1060 (0.3%)
1	D	0.99	0/773	0.97	3/1053 (0.3%)
All	All	1.09	5/3153 (0.2%)	1.01	13/4297 (0.3%)

All (5) bond length outliers are listed below:

Mol	Chain	Res	Type	Atoms	Z	Observed(Å)	Ideal(Å)
1	A	65	TRP	CB-CG	5.79	1.60	1.50
1	A	60	ASN	CB-CG	-5.74	1.37	1.51
1	B	65	TRP	CB-CG	5.59	1.60	1.50
1	A	60	ASN	C-O	-5.33	1.13	1.23
1	B	60	ASN	CB-CG	-5.11	1.39	1.51

All (13) bond angle outliers are listed below:

Mol	Chain	Res	Type	Atoms	Z	Observed(°)	Ideal(°)
1	C	90	ARG	NE-CZ-NH1	7.68	124.14	120.30
1	A	115	LEU	CB-CG-CD1	7.19	123.23	111.00
1	A	66	SER	CB-CA-C	-6.56	97.64	110.10
1	C	90	ARG	NE-CZ-NH2	-6.40	117.10	120.30
1	B	83	ASP	N-CA-C	-6.16	94.36	111.00
1	D	130	LEU	CA-CB-CG	6.06	129.25	115.30
1	A	83	ASP	N-CA-C	-5.91	95.03	111.00
1	D	83	ASP	N-CA-C	-5.75	95.47	111.00
1	A	115	LEU	CB-CG-CD2	-5.57	101.54	111.00
1	A	59	ASP	CB-CG-OD2	5.13	122.92	118.30
1	B	44	VAL	CG1-CB-CG2	-5.08	102.77	110.90
1	D	82	ARG	NE-CZ-NH2	-5.07	117.77	120.30

*Continued on next page...*



*Continued from previous page...*

Mol	Chain	Res	Type	Atoms	Z	Observed(°)	Ideal(°)
1	C	82	ARG	NE-CZ-NH2	-5.06	117.77	120.30

There are no chirality outliers.

There are no planarity outliers.

## 5.2 Too-close contacts [i](#)

In the following table, the Non-H and H(model) columns list the number of non-hydrogen atoms and hydrogen atoms in the chain respectively. The H(added) column lists the number of hydrogen atoms added and optimized by MolProbity. The Clashes column lists the number of clashes within the asymmetric unit, whereas Symm-Clashes lists symmetry-related clashes.

Mol	Chain	Non-H	H(model)	H(added)	Clashes	Symm-Clashes
1	A	787	0	769	17	0
1	B	787	0	768	22	0
1	C	765	0	747	17	0
1	D	760	0	743	18	0
2	A	28	0	26	3	0
2	B	28	0	26	1	0
2	C	28	0	26	0	0
2	D	14	0	13	1	0
3	A	61	0	0	10	0
3	B	60	0	0	11	0
3	C	36	0	0	7	0
3	D	35	0	0	7	0
All	All	3389	0	3118	77	0

The all-atom clashscore is defined as the number of clashes found per 1000 atoms (including hydrogen atoms). The all-atom clashscore for this structure is 12.

All (77) close contacts within the same asymmetric unit are listed below, sorted by their clash magnitude.

Atom-1	Atom-2	Interatomic distance (Å)	Clash overlap (Å)
1:D:35:PHE:N	1:D:35:PHE:HD1	1.52	1.04
1:B:37:LEU:HD12	3:B:168:HOH:O	1.57	1.01
1:D:35:PHE:N	1:D:35:PHE:CD1	2.28	0.85
1:B:112:THR:HG23	3:B:11:HOH:O	1.77	0.84
1:A:84:ASN:HB2	3:A:176:HOH:O	1.80	0.82
1:B:128:THR:CG2	3:B:159:HOH:O	2.29	0.81
1:D:128:THR:HG22	3:D:13:HOH:O	1.81	0.80

*Continued on next page...*

*Continued from previous page...*

Atom-1	Atom-2	Interatomic distance (Å)	Clash overlap (Å)
1:B:128:THR:HG22	3:B:159:HOH:O	1.81	0.80
1:A:94:HIS:HE1	3:B:14:HOH:O	1.64	0.79
1:A:112:THR:CG2	3:A:158:HOH:O	2.32	0.77
1:A:128:THR:CG2	3:A:1:HOH:O	2.32	0.76
2:A:1395:NAG:O3	2:A:1395:NAG:H82	1.85	0.75
1:A:34:GLN:HE21	1:A:58:ASN:ND2	1.87	0.73
1:B:94:HIS:HE1	3:B:12:HOH:O	1.70	0.73
1:D:82:ARG:NH2	3:D:152:HOH:O	2.22	0.72
1:C:70:GLN:NE2	3:C:149:HOH:O	2.26	0.69
1:C:58:ASN:HD21	1:C:61:THR:HB	1.58	0.68
1:A:34:GLN:HE21	1:A:58:ASN:HD22	1.40	0.68
1:B:67:ASN:HB2	1:B:68:PRO:CD	2.23	0.67
1:D:80:ALA:O	3:D:134:HOH:O	2.13	0.67
1:D:128:THR:CG2	3:D:13:HOH:O	2.38	0.66
1:A:58:ASN:HD21	1:A:61:THR:HB	1.61	0.66
1:C:112:THR:CG2	3:C:148:HOH:O	2.43	0.65
1:D:79:LYS:HE3	3:D:153:HOH:O	1.96	0.64
1:A:56:ASP:HB3	3:A:138:HOH:O	1.96	0.64
1:A:112:THR:HG23	3:A:158:HOH:O	1.93	0.63
1:A:67:ASN:HB2	1:A:68:PRO:HD2	1.81	0.63
1:A:67:ASN:HB2	1:A:68:PRO:CD	2.29	0.62
1:A:82:ARG:HD2	3:D:174:HOH:O	1.98	0.62
1:C:34:GLN:HE21	1:C:58:ASN:HD22	1.48	0.62
1:B:55:VAL:O	1:B:94:HIS:HD2	1.82	0.61
1:C:112:THR:HG23	3:C:148:HOH:O	2.02	0.59
1:A:128:THR:HG23	3:A:1:HOH:O	2.01	0.58
2:D:1395:NAG:H3	3:D:146:HOH:O	2.03	0.57
1:C:128:THR:CG2	3:C:146:HOH:O	2.52	0.57
1:B:58:ASN:HD21	1:B:61:THR:HB	1.69	0.57
1:C:34:GLN:HE21	1:C:58:ASN:ND2	2.03	0.56
1:D:58:ASN:HD21	1:D:61:THR:HB	1.71	0.56
1:B:119:PRO:HD2	3:B:160:HOH:O	2.06	0.55
1:D:51:LEU:O	1:D:97:SER:HA	2.07	0.54
1:C:112:THR:HG22	3:C:148:HOH:O	2.07	0.53
1:B:60:ASN:HB3	2:B:2395:NAG:H83	1.90	0.53
1:C:35:PHE:CD2	1:C:35:PHE:N	2.76	0.53
1:B:34:GLN:HE21	1:B:58:ASN:ND2	2.08	0.52
1:A:128:THR:HG22	3:A:1:HOH:O	2.01	0.52
1:B:118:MET:HE2	1:C:82:ARG:HB3	1.92	0.52
1:B:34:GLN:HE21	1:B:58:ASN:HD22	1.59	0.51
1:C:128:THR:HG22	3:C:146:HOH:O	2.10	0.51

*Continued on next page...*

Continued from previous page...

Atom-1	Atom-2	Interatomic distance (Å)	Clash overlap (Å)
1:C:47:GLY:O	1:C:103:VAL:HG13	2.12	0.50
1:D:55:VAL:HG11	1:D:58:ASN:HB2	1.94	0.50
1:B:38:THR:HG22	1:B:123:SER:OG	2.13	0.49
1:D:55:VAL:CG1	1:D:58:ASN:HB2	2.42	0.49
1:B:67:ASN:HB2	1:B:68:PRO:HD3	1.95	0.48
1:B:55:VAL:O	1:B:94:HIS:CD2	2.64	0.47
1:A:72:THR:O	1:A:80:ALA:HB3	2.14	0.47
1:A:82:ARG:HD3	3:A:156:HOH:O	2.15	0.47
1:C:51:LEU:O	1:C:97:SER:HA	2.15	0.46
1:A:112:THR:HG22	3:A:158:HOH:O	2.07	0.46
1:D:38:THR:O	1:D:39:GLN:HG3	2.16	0.46
1:D:38:THR:HG22	1:D:123:SER:OG	2.16	0.45
1:D:52:THR:HA	1:D:97:SER:OG	2.17	0.44
1:D:59:ASP:OD2	1:D:59:ASP:N	2.50	0.44
1:B:67:ASN:CB	1:B:68:PRO:CD	2.92	0.44
1:B:128:THR:HG23	3:B:159:HOH:O	2.07	0.43
1:B:54:ARG:HG2	3:B:162:HOH:O	2.18	0.43
1:B:82:ARG:HD3	3:B:181:HOH:O	2.19	0.42
1:C:67:ASN:HB3	1:C:73:LEU:HD21	2.02	0.42
1:D:53:CYS:O	1:D:95:GLU:HA	2.20	0.42
2:A:2395:NAG:H81	3:A:7:HOH:O	2.20	0.42
1:C:60:ASN:HA	1:C:93:TRP:CE3	2.56	0.41
1:B:56:ASP:HB3	3:B:155:HOH:O	2.21	0.41
1:D:35:PHE:O	1:D:55:VAL:HA	2.19	0.41
1:B:72:THR:O	1:B:80:ALA:HB3	2.21	0.41
2:A:1395:NAG:H82	2:A:1395:NAG:HO3	1.85	0.41
1:C:108:GLU:HB3	3:C:160:HOH:O	2.21	0.41
1:D:43:VAL:HG13	1:D:103:VAL:HG21	2.03	0.40
1:C:67:ASN:HB2	1:C:68:PRO:CD	2.52	0.40

There are no symmetry-related clashes.

## 5.3 Torsion angles [i](#)

### 5.3.1 Protein backbone [i](#)

In the following table, the Percentiles column shows the percent Ramachandran outliers of the chain as a percentile score with respect to all X-ray entries followed by that with respect to entries of similar resolution.

The Analysed column shows the number of residues for which the backbone conformation was analysed, and the total number of residues.

Mol	Chain	Analysed	Favoured	Allowed	Outliers	Percentiles	
1	A	99/108 (92%)	94 (95%)	4 (4%)	1 (1%)	15	13
1	B	99/108 (92%)	92 (93%)	6 (6%)	1 (1%)	15	13
1	C	95/108 (88%)	89 (94%)	5 (5%)	1 (1%)	14	11
1	D	95/108 (88%)	88 (93%)	6 (6%)	1 (1%)	14	11
All	All	388/432 (90%)	363 (94%)	21 (5%)	4 (1%)	15	13

All (4) Ramachandran outliers are listed below:

Mol	Chain	Res	Type
1	A	60	ASN
1	B	60	ASN
1	C	83	ASP
1	D	59	ASP

### 5.3.2 Protein sidechains [i](#)

In the following table, the Percentiles column shows the percent sidechain outliers of the chain as a percentile score with respect to all X-ray entries followed by that with respect to entries of similar resolution.

The Analysed column shows the number of residues for which the sidechain conformation was analysed, and the total number of residues.

Mol	Chain	Analysed	Rotameric	Outliers	Percentiles	
1	A	91/97 (94%)	84 (92%)	7 (8%)	13	12
1	B	91/97 (94%)	84 (92%)	7 (8%)	13	12
1	C	89/97 (92%)	81 (91%)	8 (9%)	9	8
1	D	88/97 (91%)	79 (90%)	9 (10%)	7	6
All	All	359/388 (92%)	328 (91%)	31 (9%)	10	9

All (31) residues with a non-rotameric sidechain are listed below:

Mol	Chain	Res	Type
1	A	58	ASN
1	A	66	SER
1	A	82	ARG
1	A	110	GLN
1	A	112	THR
1	A	128	THR
1	A	130	LEU

*Continued on next page...*

*Continued from previous page...*

Mol	Chain	Res	Type
1	B	58	ASN
1	B	90	ARG
1	B	103	VAL
1	B	110	GLN
1	B	112	THR
1	B	128	THR
1	B	130	LEU
1	C	35	PHE
1	C	37	LEU
1	C	90	ARG
1	C	103	VAL
1	C	110	GLN
1	C	112	THR
1	C	128	THR
1	C	130	LEU
1	D	35	PHE
1	D	39	GLN
1	D	90	ARG
1	D	104	SER
1	D	110	GLN
1	D	112	THR
1	D	124	LYS
1	D	128	THR
1	D	130	LEU

Sometimes sidechains can be flipped to improve hydrogen bonding and reduce clashes. All (9) such sidechains are listed below:

Mol	Chain	Res	Type
1	A	58	ASN
1	A	94	HIS
1	B	58	ASN
1	B	94	HIS
1	C	58	ASN
1	C	70	GLN
1	C	94	HIS
1	D	39	GLN
1	D	58	ASN

### 5.3.3 RNA

There are no RNA molecules in this entry.

## 5.4 Non-standard residues in protein, DNA, RNA chains [i](#)

There are no non-standard protein/DNA/RNA residues in this entry.

## 5.5 Carbohydrates [i](#)

There are no monosaccharides in this entry.

## 5.6 Ligand geometry [i](#)

7 ligands are modelled in this entry.

In the following table, the Counts columns list the number of bonds (or angles) for which Mogul statistics could be retrieved, the number of bonds (or angles) that are observed in the model and the number of bonds (or angles) that are defined in the Chemical Component Dictionary. The Link column lists molecule types, if any, to which the group is linked. The Z score for a bond length (or angle) is the number of standard deviations the observed value is removed from the expected value. A bond length (or angle) with  $|Z| > 2$  is considered an outlier worth inspection. RMSZ is the root-mean-square of all Z scores of the bond lengths (or angles).

Mol	Type	Chain	Res	Link	Bond lengths			Bond angles		
					Counts	RMSZ	# Z  > 2	Counts	RMSZ	# Z  > 2
2	NAG	D	1395	1	14,14,15	0.89	0	17,19,21	2.46	7 (41%)
2	NAG	B	2395	1	14,14,15	1.26	2 (14%)	17,19,21	2.43	6 (35%)
2	NAG	A	2395	1	14,14,15	1.35	2 (14%)	17,19,21	3.20	6 (35%)
2	NAG	C	2395	1	14,14,15	0.63	0	17,19,21	1.61	3 (17%)
2	NAG	B	1395	1	14,14,15	1.13	1 (7%)	17,19,21	2.28	9 (52%)
2	NAG	A	1395	1	14,14,15	0.80	0	17,19,21	2.85	5 (29%)
2	NAG	C	1395	1	14,14,15	0.47	0	17,19,21	2.01	6 (35%)

In the following table, the Chirals column lists the number of chiral outliers, the number of chiral centers analysed, the number of these observed in the model and the number defined in the Chemical Component Dictionary. Similar counts are reported in the Torsion and Rings columns. '-' means no outliers of that kind were identified.

Mol	Type	Chain	Res	Link	Chirals	Torsions	Rings
2	NAG	D	1395	1	-	4/6/23/26	0/1/1/1
2	NAG	B	2395	1	-	4/6/23/26	0/1/1/1
2	NAG	A	2395	1	-	4/6/23/26	0/1/1/1
2	NAG	C	2395	1	-	2/6/23/26	0/1/1/1
2	NAG	B	1395	1	-	2/6/23/26	0/1/1/1

*Continued on next page...*

*Continued from previous page...*

Mol	Type	Chain	Res	Link	Chirals	Torsions	Rings
2	NAG	A	1395	1	-	4/6/23/26	0/1/1/1
2	NAG	C	1395	1	-	2/6/23/26	0/1/1/1

All (5) bond length outliers are listed below:

Mol	Chain	Res	Type	Atoms	Z	Observed(Å)	Ideal(Å)
2	B	2395	NAG	C1-C2	3.48	1.57	1.52
2	B	1395	NAG	C1-C2	2.64	1.56	1.52
2	A	2395	NAG	O5-C5	-2.36	1.38	1.43
2	A	2395	NAG	O5-C1	-2.28	1.40	1.43
2	B	2395	NAG	C3-C2	2.06	1.56	1.52

All (42) bond angle outliers are listed below:

Mol	Chain	Res	Type	Atoms	Z	Observed(°)	Ideal(°)
2	A	2395	NAG	C3-C4-C5	-8.96	94.26	110.24
2	A	1395	NAG	C1-O5-C5	8.11	123.19	112.19
2	D	1395	NAG	C2-N2-C7	5.68	130.99	122.90
2	B	2395	NAG	C1-O5-C5	5.37	119.47	112.19
2	A	2395	NAG	O5-C5-C6	5.26	115.46	107.20
2	A	2395	NAG	O5-C5-C4	-5.15	98.31	110.83
2	B	1395	NAG	O5-C1-C2	-4.96	103.46	111.29
2	C	1395	NAG	C1-O5-C5	4.94	118.88	112.19
2	B	2395	NAG	C4-C3-C2	4.88	118.17	111.02
2	D	1395	NAG	O5-C5-C6	4.81	114.74	107.20
2	C	2395	NAG	O5-C5-C6	4.44	114.17	107.20
2	A	1395	NAG	O5-C5-C6	-4.09	100.79	107.20
2	B	2395	NAG	C2-N2-C7	3.99	128.58	122.90
2	C	1395	NAG	O5-C1-C2	-3.99	104.99	111.29
2	A	1395	NAG	O5-C1-C2	-3.73	105.40	111.29
2	B	1395	NAG	C2-N2-C7	-3.54	117.87	122.90
2	A	2395	NAG	C1-O5-C5	-3.52	107.42	112.19
2	A	1395	NAG	O4-C4-C5	3.42	117.79	109.30
2	D	1395	NAG	C8-C7-N2	3.32	121.73	116.10
2	A	1395	NAG	C8-C7-N2	3.27	121.63	116.10
2	B	1395	NAG	C1-O5-C5	3.23	116.58	112.19
2	B	2395	NAG	O5-C5-C6	3.16	112.16	107.20
2	A	2395	NAG	C2-N2-C7	3.09	127.31	122.90
2	C	1395	NAG	O5-C5-C6	2.95	111.83	107.20
2	B	1395	NAG	O7-C7-C8	-2.91	116.65	122.06
2	D	1395	NAG	O5-C1-C2	-2.87	106.75	111.29
2	B	2395	NAG	C8-C7-N2	2.69	120.65	116.10

*Continued on next page...*

Continued from previous page...

Mol	Chain	Res	Type	Atoms	Z	Observed(°)	Ideal(°)
2	D	1395	NAG	O7-C7-C8	-2.52	117.38	122.06
2	B	1395	NAG	C8-C7-N2	2.48	120.30	116.10
2	B	2395	NAG	O7-C7-C8	-2.47	117.47	122.06
2	B	1395	NAG	O4-C4-C5	2.47	115.42	109.30
2	D	1395	NAG	C1-O5-C5	2.46	115.53	112.19
2	B	1395	NAG	O5-C5-C6	2.44	111.03	107.20
2	B	1395	NAG	C1-C2-N2	2.36	114.53	110.49
2	D	1395	NAG	C4-C3-C2	-2.26	107.71	111.02
2	C	1395	NAG	C8-C7-N2	2.21	119.85	116.10
2	C	2395	NAG	C1-O5-C5	-2.19	109.22	112.19
2	A	2395	NAG	O5-C1-C2	-2.16	107.87	111.29
2	C	2395	NAG	C4-C3-C2	2.14	114.15	111.02
2	C	1395	NAG	O3-C3-C4	-2.12	105.45	110.35
2	C	1395	NAG	O4-C4-C5	2.12	114.56	109.30
2	B	1395	NAG	C4-C3-C2	-2.08	107.98	111.02

There are no chirality outliers.

All (22) torsion outliers are listed below:

Mol	Chain	Res	Type	Atoms
2	A	2395	NAG	O5-C5-C6-O6
2	C	2395	NAG	O5-C5-C6-O6
2	A	2395	NAG	C4-C5-C6-O6
2	D	1395	NAG	O5-C5-C6-O6
2	A	1395	NAG	C8-C7-N2-C2
2	A	1395	NAG	O7-C7-N2-C2
2	A	2395	NAG	C8-C7-N2-C2
2	A	2395	NAG	O7-C7-N2-C2
2	B	1395	NAG	C8-C7-N2-C2
2	B	1395	NAG	O7-C7-N2-C2
2	B	2395	NAG	C8-C7-N2-C2
2	B	2395	NAG	O7-C7-N2-C2
2	C	1395	NAG	C8-C7-N2-C2
2	C	1395	NAG	O7-C7-N2-C2
2	D	1395	NAG	C8-C7-N2-C2
2	D	1395	NAG	O7-C7-N2-C2
2	D	1395	NAG	C4-C5-C6-O6
2	C	2395	NAG	C4-C5-C6-O6
2	A	1395	NAG	O5-C5-C6-O6
2	B	2395	NAG	O5-C5-C6-O6
2	B	2395	NAG	C4-C5-C6-O6
2	A	1395	NAG	C4-C5-C6-O6



There are no ring outliers.

4 monomers are involved in 5 short contacts:

Mol	Chain	Res	Type	Clashes	Symm-Clashes
2	D	1395	NAG	1	0
2	B	2395	NAG	1	0
2	A	2395	NAG	1	0
2	A	1395	NAG	2	0

## 5.7 Other polymers [i](#)

There are no such residues in this entry.

## 5.8 Polymer linkage issues [i](#)

There are no chain breaks in this entry.

## 6 Fit of model and data [i](#)

### 6.1 Protein, DNA and RNA chains [i](#)

In the following table, the column labelled ‘#RSRZ> 2’ contains the number (and percentage) of RSRZ outliers, followed by percent RSRZ outliers for the chain as percentile scores relative to all X-ray entries and entries of similar resolution. The OWAB column contains the minimum, median, 95<sup>th</sup> percentile and maximum values of the occupancy-weighted average B-factor per residue. The column labelled ‘Q< 0.9’ lists the number of (and percentage) of residues with an average occupancy less than 0.9.

Mol	Chain	Analysed	<RSRZ>	#RSRZ>2	OWAB(Å <sup>2</sup> )	Q<0.9
1	A	101/108 (93%)	-0.01	0 <b>100</b>   <b>100</b>	26, 36, 51, 63	0
1	B	101/108 (93%)	0.00	1 (0%) 82   81	25, 36, 50, 66	0
1	C	97/108 (89%)	-0.13	0 <b>100</b>   <b>100</b>	34, 52, 68, 80	0
1	D	97/108 (89%)	-0.03	0 <b>100</b>   <b>100</b>	33, 52, 69, 81	0
All	All	396/432 (91%)	-0.04	1 (0%) <b>94</b>   <b>93</b>	25, 44, 65, 81	0

All (1) RSRZ outliers are listed below:

Mol	Chain	Res	Type	RSRZ
1	B	132	VAL	2.0

### 6.2 Non-standard residues in protein, DNA, RNA chains [i](#)

There are no non-standard protein/DNA/RNA residues in this entry.

### 6.3 Carbohydrates [i](#)

There are no monosaccharides in this entry.

### 6.4 Ligands [i](#)

In the following table, the Atoms column lists the number of modelled atoms in the group and the number defined in the chemical component dictionary. The B-factors column lists the minimum, median, 95<sup>th</sup> percentile and maximum values of B factors of atoms in the group. The column labelled ‘Q< 0.9’ lists the number of atoms with occupancy less than 0.9.

Mol	Type	Chain	Res	Atoms	RSCC	RSR	B-factors(Å <sup>2</sup> )	Q<0.9
2	NAG	C	2395	14/15	<b>0.56</b>	<b>0.44</b>	82,92,96,98	1

*Continued on next page...*

*Continued from previous page...*

Mol	Type	Chain	Res	Atoms	RSCC	RSR	B-factors( $\text{\AA}^2$ )	Q<0.9
2	NAG	B	2395	14/15	0.71	0.34	68,79,82,82	0
2	NAG	D	1395	14/15	0.78	0.23	60,72,78,79	0
2	NAG	A	1395	14/15	0.83	0.37	60,73,78,81	0
2	NAG	A	2395	14/15	0.83	0.31	67,77,81,85	0
2	NAG	B	1395	14/15	0.83	0.32	55,67,78,78	0
2	NAG	C	1395	14/15	0.89	0.25	60,70,73,75	0

## 6.5 Other polymers [\(i\)](#)

There are no such residues in this entry.