



Full wwPDB EM Validation Report ⓘ

Nov 19, 2022 – 11:27 am GMT

PDB ID : 5M54
EMDB ID : EMD-4156
Title : Mechanism of microtubule minus-end recognition and protection by CAMSAP proteins
Authors : Akhmanova, A.; Moores, C.A.; Baldus, M.; Steinmetz, M.O.; Topf, M.; Roberts, A.J.; Grant, B.J.; Scarabelli, G.; Joseph, A.-J.; van Hooff, J.J.E.; Houben, K.; Hua, S.; Luo, Y.; Stangier, M.M.; Jiang, K.; Atherton, J.
Deposited on : 2016-10-20
Resolution : 8.00 Å(reported)

This is a Full wwPDB EM Validation Report for a publicly released PDB entry.

We welcome your comments at validation@mail.wwpdb.org

A user guide is available at

<https://www.wwpdb.org/validation/2017/EMValidationReportHelp>

with specific help available everywhere you see the ⓘ symbol.

The types of validation reports are described at

<http://www.wwpdb.org/validation/2017/FAQs#types>.

The following versions of software and data (see [references ⓘ](#)) were used in the production of this report:

EMDB validation analysis : 0.0.1.dev43
Mogul : 1.8.4, CSD as541be (2020)
MolProbity : 4.02b-467
buster-report : 1.1.7 (2018)
Percentile statistics : 20191225.v01 (using entries in the PDB archive December 25th 2019)
MapQ : 1.9.9
Ideal geometry (proteins) : Engh & Huber (2001)
Ideal geometry (DNA, RNA) : Parkinson et al. (1996)
Validation Pipeline (wwPDB-VP) : 2.31.2

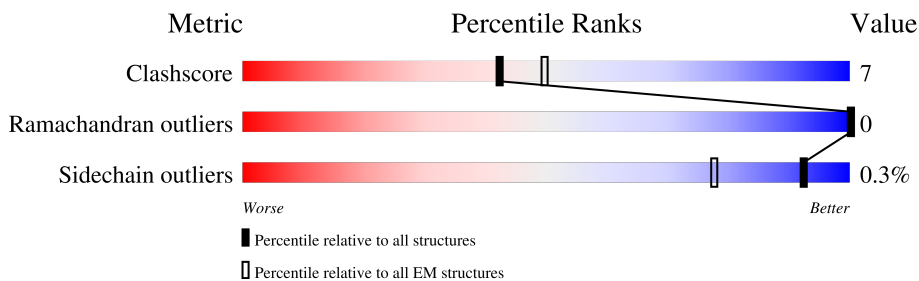
1 Overall quality at a glance

The following experimental techniques were used to determine the structure:

ELECTRON MICROSCOPY

The reported resolution of this entry is 8.00 Å.

Percentile scores (ranging between 0-100) for global validation metrics of the entry are shown in the following graphic. The table shows the number of entries on which the scores are based.



Metric	Whole archive (#Entries)	EM structures (#Entries)
Clashscore	158937	4297
Ramachandran outliers	154571	4023
Sidechain outliers	154315	3826

The table below summarises the geometric issues observed across the polymeric chains and their fit to the map. The red, orange, yellow and green segments of the bar indicate the fraction of residues that contain outliers for ≥ 3 , 2, 1 and 0 types of geometric quality criteria respectively. A grey segment represents the fraction of residues that are not modelled. The numeric value for each fraction is indicated below the corresponding segment, with a dot representing fractions $\leq 5\%$. The upper red bar (where present) indicates the fraction of residues that have poor fit to the EM map (all-atom inclusion $< 40\%$). The numeric value is given above the bar.

Mol	Chain	Length	Quality of chain
1	C	117	<p>40% 80% 20%</p>
2	A	438	<p>78% 20%</p>
2	D	438	<p>79% 18%</p>
3	B	426	<p>82% 18%</p>
3	E	426	<p>83% 17%</p>

2 Entry composition [i](#)

There are 8 unique types of molecules in this entry. The entry contains 14605 atoms, of which 0 are hydrogens and 0 are deuteriums.

In the tables below, the AltConf column contains the number of residues with at least one atom in alternate conformation and the Trace column contains the number of residues modelled with at most 2 atoms.

- Molecule 1 is a protein called Calmodulin-regulated spectrin-associated protein 1.

Mol	Chain	Residues	Atoms					AltConf	Trace
			Total	C	N	O	S		
1	C	117	947	604	163	173	7	0	0

- Molecule 2 is a protein called Tubulin alpha chain.

Mol	Chain	Residues	Atoms					AltConf	Trace
			Total	C	N	O	S		
2	D	428	3350	2121	570	638	21	0	0
2	A	428	3350	2121	570	638	21	0	0

There are 6 discrepancies between the modelled and reference sequences:

Chain	Residue	Modelled	Actual	Comment	Reference
D	136	SER	LEU	conflict	UNP F2Z4C1
D	265	GLY	ILE	conflict	UNP F2Z4C1
D	358	GLU	GLN	conflict	UNP F2Z4C1
A	136	SER	LEU	conflict	UNP F2Z4C1
A	265	GLY	ILE	conflict	UNP F2Z4C1
A	358	GLU	GLN	conflict	UNP F2Z4C1

- Molecule 3 is a protein called Tubulin beta-2B chain.

Mol	Chain	Residues	Atoms					AltConf	Trace
			Total	C	N	O	S		
3	E	426	3352	2105	575	647	25	0	0
3	B	426	3352	2105	575	647	25	0	0

There are 8 discrepancies between the modelled and reference sequences:

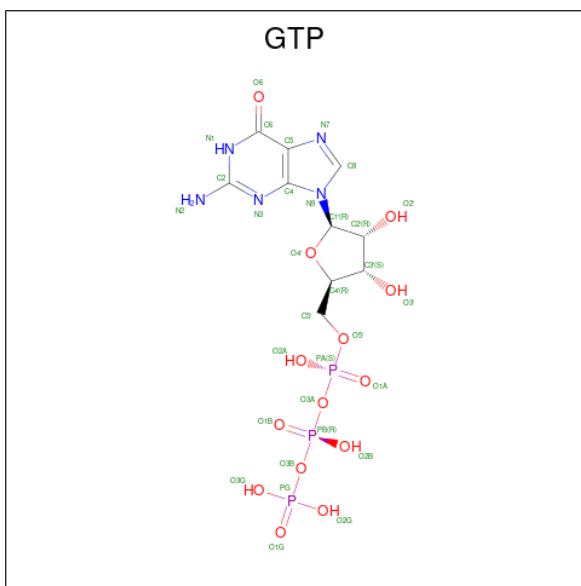
Chain	Residue	Modelled	Actual	Comment	Reference
E	57	ALA	THR	conflict	UNP Q6B856

Continued on next page...

Continued from previous page...

Chain	Residue	Modelled	Actual	Comment	Reference
E	172	VAL	MET	conflict	UNP Q6B856
E	298	ALA	SER	conflict	UNP Q6B856
E	318	VAL	ILE	conflict	UNP Q6B856
B	57	ALA	THR	conflict	UNP Q6B856
B	172	VAL	MET	conflict	UNP Q6B856
B	298	ALA	SER	conflict	UNP Q6B856
B	318	VAL	ILE	conflict	UNP Q6B856

- Molecule 4 is GUANOSINE-5'-TRIPHOSPHATE (three-letter code: GTP) (formula: $C_{10}H_{16}N_5O_{14}P_3$).



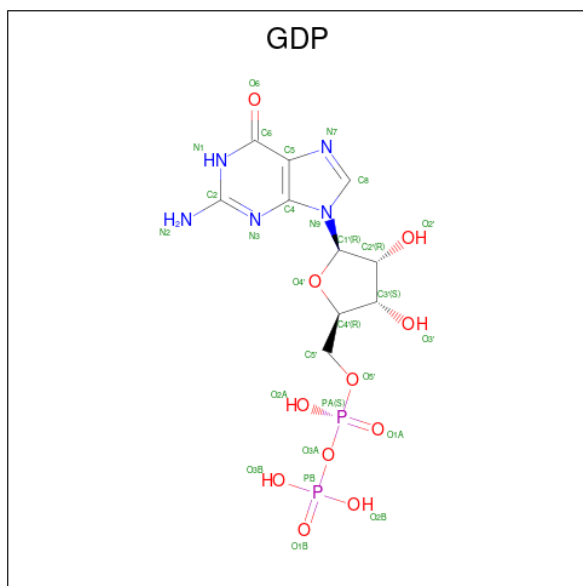
Mol	Chain	Residues	Atoms				AltConf	
			Total	C	N	O		P
4	D	1	32	10	5	14	3	0
4	A	1	32	10	5	14	3	0

- Molecule 5 is MAGNESIUM ION (three-letter code: MG) (formula: Mg).

Mol	Chain	Residues	Atoms		AltConf
			Total	Mg	
5	D	1	1	1	0
5	A	1	1	1	0

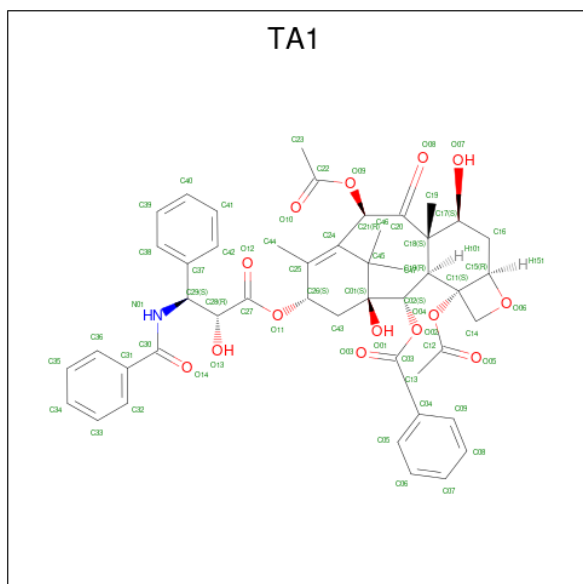
- Molecule 6 is GUANOSINE-5'-DIPHOSPHATE (three-letter code: GDP) (formula:

$C_{10}H_{15}N_5O_{11}P_2$).



Mol	Chain	Residues	Atoms				AltConf	
6	E	1	Total	C	N	O	P	0
			28	10	5	11	2	
6	B	1	Total	C	N	O	P	0
			28	10	5	11	2	

- Molecule 7 is TAXOL (three-letter code: TA1) (formula: $C_{47}H_{51}NO_{14}$).



Mol	Chain	Residues	Atoms				AltConf
7	E	1	Total	C	N	O	0
			62	47	1	14	

Continued on next page...

Continued from previous page...

Mol	Chain	Residues	Atoms				AltConf
			Total	C	N	O	
7	B	1	62	47	1	14	0

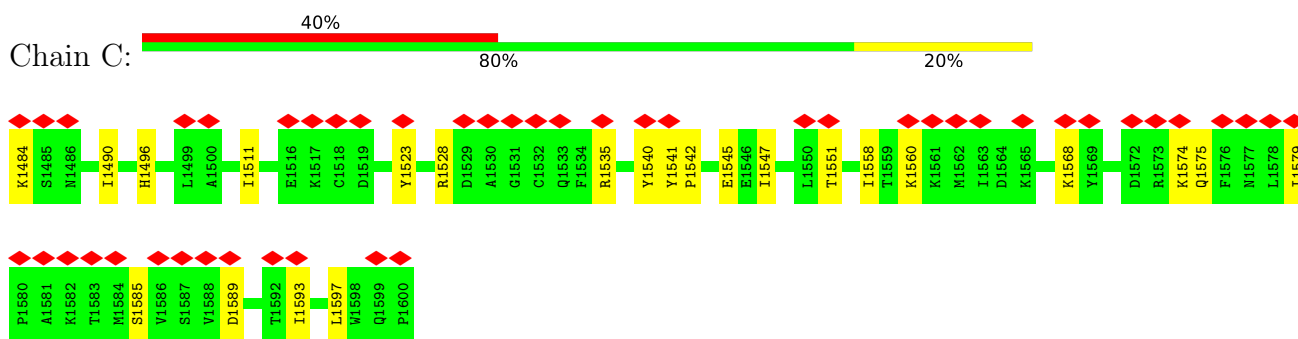
- Molecule 8 is water.

Mol	Chain	Residues	Atoms		AltConf
8	D	4	Total	O	0
			4	4	
8	A	4	Total	O	0
			4	4	

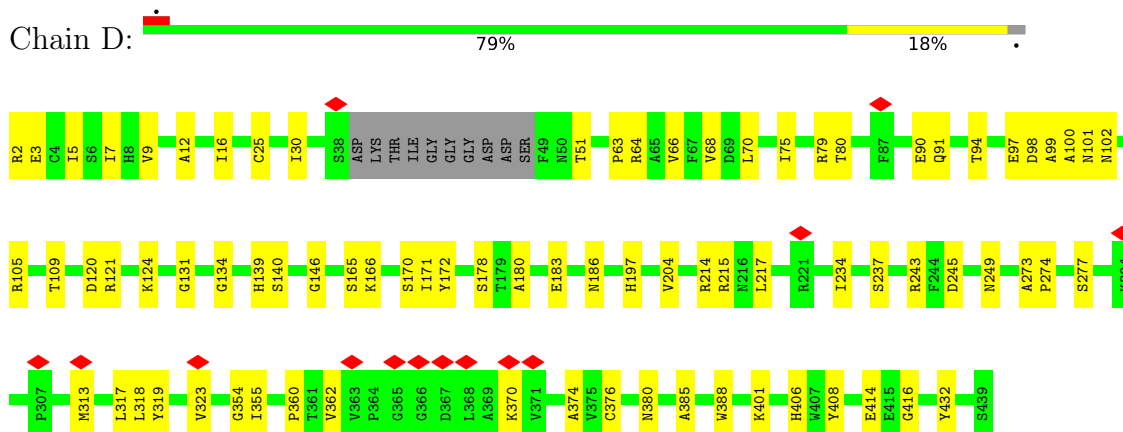
3 Residue-property plots [i](#)

These plots are drawn for all protein, RNA, DNA and oligosaccharide chains in the entry. The first graphic for a chain summarises the proportions of the various outlier classes displayed in the second graphic. The second graphic shows the sequence view annotated by issues in geometry and atom inclusion in map density. Residues are color-coded according to the number of geometric quality criteria for which they contain at least one outlier: green = 0, yellow = 1, orange = 2 and red = 3 or more. A red diamond above a residue indicates a poor fit to the EM map for this residue (all-atom inclusion < 40%). Stretches of 2 or more consecutive residues without any outlier are shown as a green connector. Residues present in the sample, but not in the model, are shown in grey.

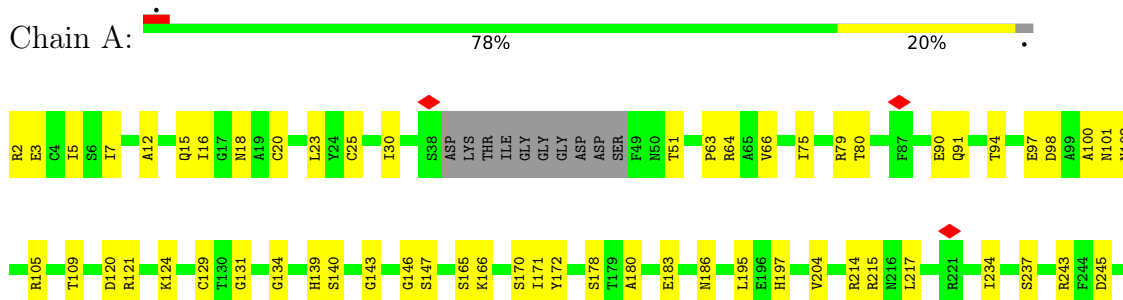
- Molecule 1: Calmodulin-regulated spectrin-associated protein 1

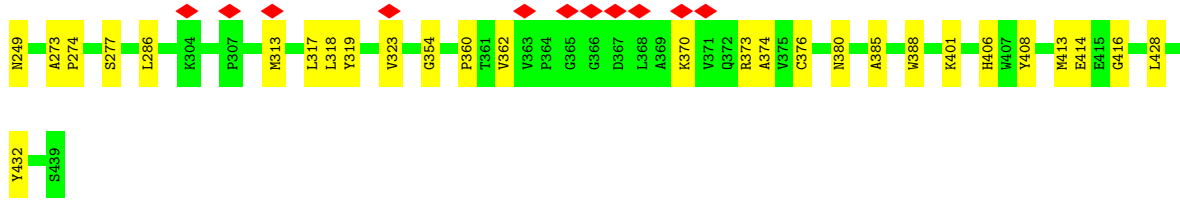


- Molecule 2: Tubulin alpha chain

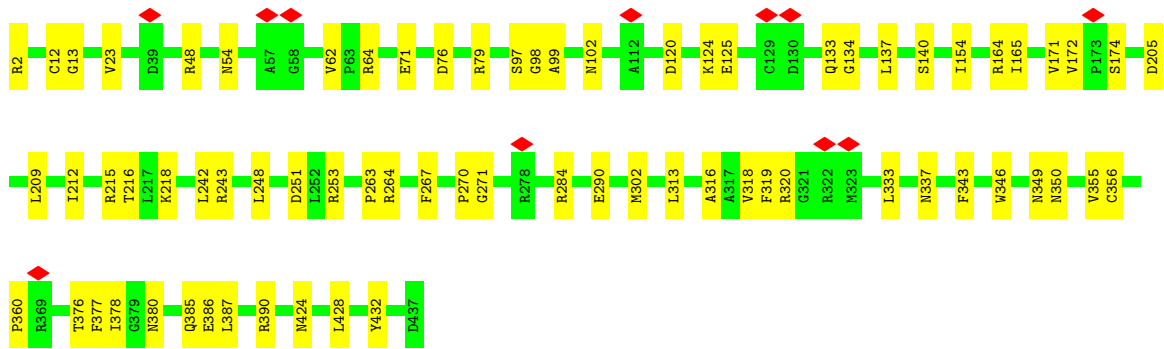
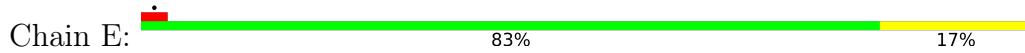


- Molecule 2: Tubulin alpha chain

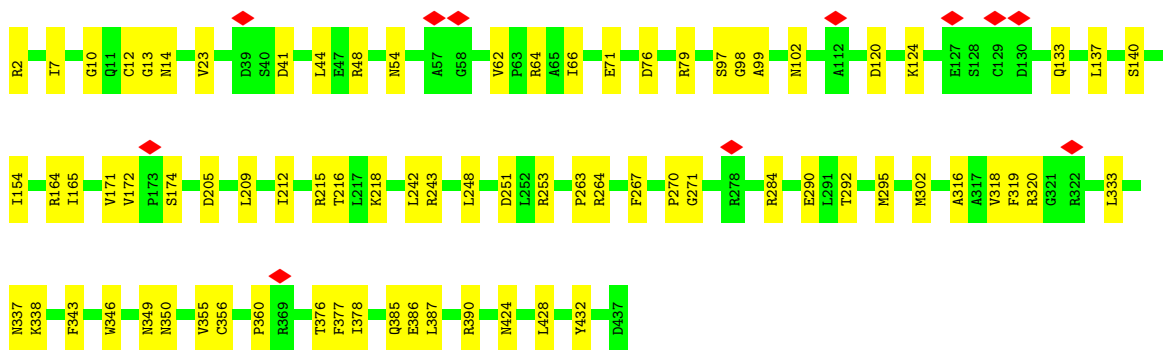
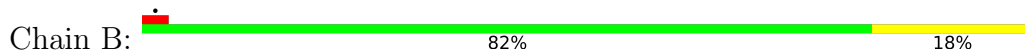




• Molecule 3: Tubulin beta-2B chain



• Molecule 3: Tubulin beta-2B chain



4 Experimental information

Property	Value	Source
EM reconstruction method	SINGLE PARTICLE	Depositor
Imposed symmetry	POINT, Not provided	
Number of particles used	5954	Depositor
Resolution determination method	FSC 0.143 CUT-OFF	Depositor
CTF correction method	PHASE FLIPPING AND AMPLITUDE CORRECTION	Depositor
Microscope	FEI TECNAI F20	Depositor
Voltage (kV)	200	Depositor
Electron dose ($e^-/\text{\AA}^2$)	20	Depositor
Minimum defocus (nm)	Not provided	
Maximum defocus (nm)	Not provided	
Magnification	Not provided	
Image detector	DIRECT ELECTRON DE-20 (5k x 3k)	Depositor
Maximum map value	0.108	Depositor
Minimum map value	-0.023	Depositor
Average map value	0.008	Depositor
Map value standard deviation	0.018	Depositor
Recommended contour level	0.0405	Depositor
Map size (Å)	121.896996, 131.155, 135.784	wwPDB
Map dimensions	79, 85, 88	wwPDB
Map angles (°)	90.0, 90.0, 90.0	wwPDB
Pixel spacing (Å)	1.543, 1.543, 1.543	Depositor

5 Model quality [i](#)

5.1 Standard geometry [i](#)

Bond lengths and bond angles in the following residue types are not validated in this section: GDP, GTP, MG, TA1

The Z score for a bond length (or angle) is the number of standard deviations the observed value is removed from the expected value. A bond length (or angle) with $|Z| > 5$ is considered an outlier worth inspection. RMSZ is the root-mean-square of all Z scores of the bond lengths (or angles).

Mol	Chain	Bond lengths		Bond angles	
		RMSZ	# Z >5	RMSZ	# Z >5
1	C	0.26	0/970	0.52	0/1309
2	A	0.27	0/3427	0.46	0/4651
2	D	0.27	0/3427	0.46	0/4651
3	B	0.27	0/3427	0.46	0/4642
3	E	0.27	0/3427	0.46	0/4642
All	All	0.27	0/14678	0.46	0/19895

Chiral center outliers are detected by calculating the chiral volume of a chiral center and verifying if the center is modelled as a planar moiety or with the opposite hand. A planarity outlier is detected by checking planarity of atoms in a peptide group, atoms in a mainchain group or atoms of a sidechain that are expected to be planar.

Mol	Chain	#Chirality outliers	#Planarity outliers
2	A	0	1
2	D	0	1
All	All	0	2

There are no bond length outliers.

There are no bond angle outliers.

There are no chirality outliers.

All (2) planarity outliers are listed below:

Mol	Chain	Res	Type	Group
2	A	273	ALA	Peptide
2	D	273	ALA	Peptide

5.2 Too-close contacts [i](#)

In the following table, the Non-H and H(model) columns list the number of non-hydrogen atoms and hydrogen atoms in the chain respectively. The H(added) column lists the number of hydrogen atoms added and optimized by MolProbity. The Clashes column lists the number of clashes within the asymmetric unit, whereas Symm-Clashes lists symmetry-related clashes.

Mol	Chain	Non-H	H(model)	H(added)	Clashes	Symm-Clashes
1	C	947	0	948	13	0
2	A	3350	0	3254	53	0
2	D	3350	0	3254	49	0
3	B	3352	0	3229	51	0
3	E	3352	0	3229	49	0
4	A	32	0	12	0	0
4	D	32	0	12	0	0
5	A	1	0	0	0	0
5	D	1	0	0	0	0
6	B	28	0	12	0	0
6	E	28	0	12	1	0
7	B	62	0	51	6	0
7	E	62	0	51	5	0
8	A	4	0	0	0	0
8	D	4	0	0	0	0
All	All	14605	0	14064	206	0

The all-atom clashscore is defined as the number of clashes found per 1000 atoms (including hydrogen atoms). The all-atom clashscore for this structure is 7.

All (206) close contacts within the same asymmetric unit are listed below, sorted by their clash magnitude.

Atom-1	Atom-2	Interatomic distance (Å)	Clash overlap (Å)
7:E:502:TA1:C21	7:E:502:TA1:C20	1.81	1.57
7:B:502:TA1:C20	7:B:502:TA1:C21	1.81	1.57
2:A:51:THR:HG21	2:A:243:ARG:HG2	1.77	0.66
2:D:90:GLU:HG3	2:D:121:ARG:HD2	1.80	0.64
2:D:51:THR:HG21	2:D:243:ARG:HG2	1.78	0.64
2:D:318:LEU:HB2	2:D:376:CYS:HB2	1.80	0.63
2:A:318:LEU:HB2	2:A:376:CYS:HB2	1.81	0.61
3:B:54:ASN:HB2	3:B:62:VAL:HB	1.83	0.60
2:D:98:ASP:HB2	3:E:2:ARG:HH12	1.65	0.60
2:D:214:ARG:HG3	2:D:215:ARG:HG3	1.84	0.59
3:B:316:ALA:HB3	3:B:378:ILE:HB	1.83	0.59
3:E:54:ASN:HB2	3:E:62:VAL:HB	1.85	0.59

Continued on next page...

Continued from previous page...

Atom-1	Atom-2	Interatomic distance (Å)	Clash overlap (Å)
3:E:386:GLU:OE2	3:E:390:ARG:NH1	2.36	0.59
2:A:214:ARG:HG3	2:A:215:ARG:HG3	1.86	0.58
3:E:316:ALA:HB3	3:E:378:ILE:HB	1.83	0.58
1:C:1547:ILE:HG21	1:C:1558:ILE:H	1.68	0.58
2:D:120:ASP:OD2	2:D:124:LYS:NZ	2.38	0.57
3:B:386:GLU:OE2	3:B:390:ARG:NH1	2.38	0.57
1:C:1496:HIS:HB3	1:C:1574:LYS:HE3	1.87	0.57
3:B:120:ASP:OD2	3:B:124:LYS:NZ	2.37	0.56
2:D:2:ARG:N	2:D:131:GLY:O	2.38	0.56
2:A:63:PRO:O	2:A:91:GLN:NE2	2.38	0.56
2:D:63:PRO:O	2:D:91:GLN:NE2	2.40	0.56
2:D:25:CYS:HA	2:D:30:ILE:HD12	1.88	0.55
2:D:360:PRO:O	2:D:370:LYS:NZ	2.39	0.55
2:A:7:ILE:HA	2:A:66:VAL:HB	1.88	0.55
3:B:54:ASN:OD1	3:B:64:ARG:NH2	2.37	0.55
2:A:25:CYS:HA	2:A:30:ILE:HD12	1.89	0.54
2:A:2:ARG:N	2:A:131:GLY:O	2.40	0.54
2:A:120:ASP:OD2	2:A:124:LYS:NZ	2.38	0.54
2:D:16:ILE:HD11	2:D:171:ILE:HD11	1.90	0.54
2:D:385:ALA:HB2	2:D:432:TYR:HD2	1.73	0.53
2:D:180:ALA:HB3	2:D:183:GLU:HG3	1.90	0.53
2:D:97:GLU:HG2	3:E:253:ARG:HH22	1.74	0.53
2:A:180:ALA:HB3	2:A:183:GLU:HG3	1.90	0.53
2:A:360:PRO:O	2:A:370:LYS:NZ	2.39	0.53
2:A:414:GLU:HG2	2:A:416:GLY:H	1.73	0.53
2:D:274:PRO:HG2	2:D:374:ALA:HA	1.89	0.53
2:A:16:ILE:HD11	2:A:171:ILE:HD11	1.91	0.53
2:A:97:GLU:HG2	3:B:253:ARG:HH22	1.74	0.53
2:A:385:ALA:HB2	2:A:432:TYR:HD2	1.74	0.53
1:C:1490:ILE:HG13	1:C:1523:TYR:HB2	1.91	0.53
3:B:385:GLN:HB3	3:B:432:TYR:HD2	1.73	0.53
1:C:1547:ILE:HG12	1:C:1558:ILE:HB	1.90	0.52
2:D:7:ILE:HA	2:D:66:VAL:HB	1.91	0.52
3:E:54:ASN:OD1	3:E:64:ARG:NH2	2.38	0.52
2:D:414:GLU:HG2	2:D:416:GLY:H	1.73	0.52
3:E:172:VAL:HG11	3:E:387:LEU:HD13	1.90	0.52
2:A:274:PRO:HG2	2:A:374:ALA:HA	1.90	0.52
3:B:12:CYS:SG	3:B:13:GLY:N	2.82	0.52
2:D:105:ARG:HA	2:D:109:THR:HB	1.92	0.52
3:B:99:ALA:O	3:B:102:ASN:ND2	2.43	0.52
3:B:172:VAL:HG11	3:B:387:LEU:HD13	1.92	0.52

Continued on next page...

Continued from previous page...

Atom-1	Atom-2	Interatomic distance (Å)	Clash overlap (Å)
2:D:186:ASN:OD1	2:D:408:TYR:OH	2.27	0.52
2:A:98:ASP:HB2	3:B:2:ARG:HH12	1.75	0.52
3:B:48:ARG:O	3:B:243:ARG:NH2	2.42	0.52
3:B:267:PHE:HE2	3:B:428:LEU:HD21	1.75	0.52
3:E:99:ALA:O	3:E:102:ASN:ND2	2.43	0.52
3:E:48:ARG:O	3:E:243:ARG:NH2	2.42	0.51
3:E:385:GLN:HB3	3:E:432:TYR:HD2	1.74	0.51
1:C:1568:LYS:HB3	1:C:1579:ILE:HD11	1.91	0.51
2:D:178:SER:HB3	3:E:349:ASN:HD22	1.76	0.51
2:D:134:GLY:HA3	2:D:165:SER:HB3	1.93	0.51
2:D:79:ARG:HG3	2:D:80:THR:HG23	1.92	0.51
2:D:102:ASN:HD22	2:D:105:ARG:HD2	1.76	0.51
2:D:319:TYR:HB3	2:D:323:VAL:HG21	1.93	0.50
3:E:12:CYS:SG	3:E:13:GLY:N	2.84	0.50
3:B:270:PRO:HG2	3:B:302:MET:HB2	1.93	0.50
3:B:97:SER:OG	3:B:98:GLY:N	2.43	0.50
2:D:75:ILE:HG21	2:D:94:THR:HB	1.92	0.50
3:E:215:ARG:O	3:E:218:LYS:NZ	2.37	0.50
2:A:362:VAL:HG21	2:A:370:LYS:HA	1.93	0.50
2:A:178:SER:HB3	3:B:349:ASN:HD22	1.77	0.50
3:E:97:SER:OG	3:E:98:GLY:N	2.44	0.49
2:D:171:ILE:HA	2:D:204:VAL:HB	1.94	0.49
2:A:105:ARG:HA	2:A:109:THR:HB	1.95	0.49
2:A:79:ARG:HG3	2:A:80:THR:HG23	1.92	0.49
2:A:178:SER:O	3:B:349:ASN:ND2	2.46	0.49
2:D:362:VAL:HG21	2:D:370:LYS:HA	1.95	0.49
2:A:75:ILE:HG21	2:A:94:THR:HB	1.95	0.49
2:A:100:ALA:HB2	3:B:253:ARG:HE	1.78	0.48
1:C:1593:ILE:HD13	1:C:1597:LEU:HD23	1.95	0.48
2:D:100:ALA:HB2	3:E:253:ARG:HE	1.77	0.48
2:A:134:GLY:HA3	2:A:165:SER:HB3	1.95	0.48
3:B:215:ARG:O	3:B:218:LYS:NZ	2.36	0.48
3:E:2:ARG:HA	3:E:133:GLN:HB2	1.96	0.48
2:A:64:ARG:NH1	2:A:129:CYS:SG	2.87	0.48
3:B:209:LEU:HD23	3:B:212:ILE:HD12	1.95	0.48
3:E:165:ILE:HD11	3:E:253:ARG:HB2	1.95	0.48
1:C:1542:PRO:HG3	1:C:1585:SER:HA	1.95	0.47
3:E:120:ASP:OD2	3:E:124:LYS:NZ	2.39	0.47
2:A:186:ASN:OD1	2:A:408:TYR:OH	2.29	0.47
3:B:320:ARG:HD2	3:B:356:CYS:HB3	1.96	0.47
2:A:171:ILE:HA	2:A:204:VAL:HB	1.95	0.47

Continued on next page...

Continued from previous page...

Atom-1	Atom-2	Interatomic distance (Å)	Clash overlap (Å)
3:E:320:ARG:HD2	3:E:356:CYS:HB3	1.96	0.47
3:E:270:PRO:HG2	3:E:302:MET:HB2	1.95	0.47
3:B:76:ASP:OD1	3:B:79:ARG:NH2	2.40	0.47
3:E:209:LEU:HD23	3:E:212:ILE:HD12	1.96	0.47
3:E:343:PHE:HB3	3:E:350:ASN:HD22	1.80	0.47
2:D:245:ASP:OD1	2:D:249:ASN:ND2	2.47	0.47
2:D:385:ALA:HA	2:D:388:TRP:HD1	1.79	0.47
3:E:248:LEU:HB2	3:E:355:VAL:H	1.79	0.47
2:D:217:LEU:HA	2:D:277:SER:HB2	1.97	0.46
2:A:172:TYR:N	2:A:204:VAL:O	2.48	0.46
3:E:264:ARG:NH2	3:E:424:ASN:OD1	2.49	0.46
2:A:166:LYS:NZ	2:A:197:HIS:O	2.45	0.46
2:D:178:SER:O	3:E:349:ASN:ND2	2.49	0.46
2:A:139:HIS:ND1	2:A:140:SER:O	2.45	0.46
2:A:385:ALA:HA	2:A:388:TRP:HD1	1.79	0.46
3:E:271:GLY:N	3:E:377:PHE:O	2.48	0.46
2:A:245:ASP:OD1	2:A:249:ASN:ND2	2.48	0.46
2:A:313:MET:HB3	2:A:380:ASN:HB2	1.98	0.46
7:B:502:TA1:O08	7:B:502:TA1:O07	2.34	0.46
3:B:271:GLY:N	3:B:377:PHE:O	2.48	0.46
3:E:23:VAL:HG13	7:E:502:TA1:H321	1.97	0.46
3:E:54:ASN:ND2	3:E:125:GLU:OE2	2.45	0.46
2:A:90:GLU:HG3	2:A:121:ARG:HD2	1.96	0.46
3:B:320:ARG:HB3	3:B:360:PRO:HD3	1.97	0.46
3:B:343:PHE:HB3	3:B:350:ASN:HD22	1.81	0.46
2:D:5:ILE:HG12	2:D:64:ARG:HB3	1.97	0.45
3:E:140:SER:HA	3:E:171:VAL:H	1.82	0.45
3:E:137:LEU:HD22	3:E:154:ILE:HD11	1.97	0.45
2:A:217:LEU:HA	2:A:277:SER:HB2	1.97	0.45
7:E:502:TA1:H472	7:E:502:TA1:H021	1.83	0.45
3:B:248:LEU:HB2	3:B:355:VAL:H	1.82	0.45
3:E:242:LEU:HG	3:E:251:ASP:HA	1.97	0.45
3:E:267:PHE:HE2	3:E:428:LEU:HD21	1.81	0.45
3:B:165:ILE:HD11	3:B:253:ARG:HB2	1.97	0.45
1:C:1528:ARG:HB2	1:C:1535:ARG:HD2	1.99	0.45
2:D:166:LYS:NZ	2:D:197:HIS:O	2.47	0.45
7:E:502:TA1:H442	7:E:502:TA1:H211	1.94	0.45
3:B:212:ILE:O	3:B:216:THR:OG1	2.32	0.45
3:B:284:ARG:NH1	3:B:290:GLU:OE2	2.48	0.45
2:A:317:LEU:O	2:A:354:GLY:N	2.43	0.45
2:D:172:TYR:N	2:D:204:VAL:O	2.48	0.45

Continued on next page...

Continued from previous page...

Atom-1	Atom-2	Interatomic distance (Å)	Clash overlap (Å)
3:E:212:ILE:O	3:E:216:THR:OG1	2.32	0.45
2:A:319:TYR:HB3	2:A:323:VAL:HG21	1.99	0.44
3:B:318:VAL:HB	3:B:376:THR:HB	1.99	0.44
7:B:502:TA1:H442	7:B:502:TA1:H211	1.92	0.44
2:D:139:HIS:ND1	2:D:140:SER:O	2.46	0.44
1:C:1575:GLN:HE21	3:B:338:LYS:HB2	1.82	0.44
3:B:242:LEU:HG	3:B:251:ASP:HA	1.99	0.44
3:E:174:SER:OG	3:E:205:ASP:OD1	2.32	0.44
2:A:401:LYS:HG3	3:B:346:TRP:CG	2.53	0.44
3:B:23:VAL:HG13	7:B:502:TA1:H321	2.00	0.44
3:E:71:GLU:OE2	3:E:98:GLY:N	2.50	0.44
3:B:140:SER:HA	3:B:171:VAL:H	1.83	0.44
2:D:313:MET:HB3	2:D:380:ASN:HB2	1.99	0.44
2:A:98:ASP:O	3:B:253:ARG:NH2	2.50	0.44
1:C:1541:TYR:HB3	1:C:1545:GLU:HB2	2.00	0.43
3:B:2:ARG:HA	3:B:133:GLN:HB2	2.00	0.43
3:E:134:GLY:HA2	3:E:164:ARG:HB3	2.00	0.43
7:E:502:TA1:C20	7:E:502:TA1:O09	2.59	0.43
1:C:1540:TYR:HB2	1:C:1547:ILE:HD12	2.01	0.43
3:E:313:LEU:N	3:E:380:ASN:O	2.47	0.43
2:A:102:ASN:HD22	2:A:105:ARG:HD2	1.83	0.43
3:B:319:PHE:HB2	3:B:355:VAL:HA	2.00	0.43
2:D:139:HIS:ND1	2:D:146:GLY:O	2.51	0.43
3:E:320:ARG:HB3	3:E:360:PRO:HD3	2.01	0.43
3:B:137:LEU:HD22	3:B:154:ILE:HD11	1.99	0.43
2:D:98:ASP:O	3:E:253:ARG:NH2	2.51	0.43
3:E:318:VAL:HB	3:E:376:THR:HB	2.00	0.43
3:B:71:GLU:OE2	3:B:98:GLY:N	2.50	0.43
2:D:401:LYS:HG3	3:E:346:TRP:CG	2.54	0.43
3:E:284:ARG:NH1	3:E:290:GLU:OE2	2.49	0.43
3:E:319:PHE:HB2	3:E:355:VAL:HA	2.00	0.43
2:A:408:TYR:HB3	2:A:413:MET:HB2	2.01	0.42
3:B:319:PHE:HD2	3:B:355:VAL:HG22	1.84	0.42
1:C:1568:LYS:HA	1:C:1589:ASP:HB2	2.01	0.42
2:D:317:LEU:O	2:D:354:GLY:N	2.43	0.42
2:D:12:ALA:HB1	2:D:171:ILE:HD12	2.02	0.42
7:B:502:TA1:H472	7:B:502:TA1:H021	1.83	0.42
1:C:1511:ILE:HG12	1:C:1551:THR:HG21	2.00	0.42
3:B:333:LEU:HG	3:B:337:ASN:HD21	1.85	0.42
3:B:264:ARG:NH2	3:B:424:ASN:OD1	2.53	0.42
3:E:319:PHE:HD2	3:E:355:VAL:HG22	1.84	0.42

Continued on next page...

Continued from previous page...

Atom-1	Atom-2	Interatomic distance (Å)	Clash overlap (Å)
2:A:406:HIS:CD2	3:B:263:PRO:HG3	2.55	0.42
3:B:174:SER:OG	3:B:205:ASP:OD1	2.32	0.42
2:D:139:HIS:CE1	2:D:170:SER:HG	2.37	0.41
3:B:41:ASP:HA	3:B:44:LEU:HB3	2.02	0.41
2:D:70:LEU:HD12	2:D:99:ALA:HB2	2.03	0.41
2:A:139:HIS:ND1	2:A:146:GLY:O	2.53	0.41
3:B:7:ILE:HG12	3:B:66:ILE:HD12	2.01	0.41
3:E:333:LEU:HG	3:E:337:ASN:HD21	1.85	0.41
2:A:3:GLU:HG2	2:A:51:THR:HA	2.02	0.41
2:A:139:HIS:CE1	2:A:170:SER:HG	2.39	0.41
2:A:143:GLY:O	2:A:147:SER:OG	2.29	0.41
2:D:3:GLU:HG2	2:D:51:THR:HA	2.03	0.41
3:E:76:ASP:OD1	3:E:79:ARG:NH2	2.41	0.41
2:D:406:HIS:CD2	3:E:263:PRO:HG3	2.55	0.41
2:A:12:ALA:HB1	2:A:171:ILE:HD12	2.02	0.41
2:A:20:CYS:HA	2:A:23:LEU:HD12	2.03	0.41
2:A:286:LEU:O	2:A:373:ARG:NH1	2.54	0.41
3:E:12:CYS:SG	6:E:501:GDP:O1A	2.70	0.41
2:A:195:LEU:HD22	2:A:428:LEU:HD13	2.03	0.41
2:A:234:ILE:O	2:A:237:SER:OG	2.39	0.40
2:D:319:TYR:HB2	2:D:355:ILE:HA	2.04	0.40
3:B:23:VAL:HA	7:B:502:TA1:H331	2.02	0.40
2:D:9:VAL:HA	2:D:68:VAL:HB	2.03	0.40
3:E:271:GLY:O	3:E:377:PHE:N	2.52	0.40
3:B:10:GLY:O	3:B:14:ASN:ND2	2.54	0.40
3:B:133:GLN:HA	3:B:164:ARG:HH11	1.85	0.40
3:B:292:THR:HA	3:B:295:MET:HB2	2.04	0.40
2:D:234:ILE:O	2:D:237:SER:OG	2.39	0.40
2:A:5:ILE:HG12	2:A:64:ARG:HB3	2.04	0.40
2:A:15:GLN:HA	2:A:18:ASN:HD22	1.87	0.40

There are no symmetry-related clashes.

5.3 Torsion angles [i](#)

5.3.1 Protein backbone [i](#)

In the following table, the Percentiles column shows the percent Ramachandran outliers of the chain as a percentile score with respect to all PDB entries followed by that with respect to all EM entries.

The Analysed column shows the number of residues for which the backbone conformation was analysed, and the total number of residues.

Mol	Chain	Analysed	Favoured	Allowed	Outliers	Percentiles	
1	C	115/117 (98%)	106 (92%)	9 (8%)	0	100	100
2	A	424/438 (97%)	408 (96%)	16 (4%)	0	100	100
2	D	424/438 (97%)	407 (96%)	17 (4%)	0	100	100
3	B	424/426 (100%)	413 (97%)	11 (3%)	0	100	100
3	E	424/426 (100%)	415 (98%)	9 (2%)	0	100	100
All	All	1811/1845 (98%)	1749 (97%)	62 (3%)	0	100	100

There are no Ramachandran outliers to report.

5.3.2 Protein sidechains [i](#)

In the following table, the Percentiles column shows the percent sidechain outliers of the chain as a percentile score with respect to all PDB entries followed by that with respect to all EM entries.

The Analysed column shows the number of residues for which the sidechain conformation was analysed, and the total number of residues.

Mol	Chain	Analysed	Rotameric	Outliers	Percentiles	
1	C	106/106 (100%)	104 (98%)	2 (2%)	57	75
2	A	360/367 (98%)	359 (100%)	1 (0%)	92	95
2	D	360/367 (98%)	359 (100%)	1 (0%)	92	95
3	B	367/367 (100%)	367 (100%)	0	100	100
3	E	367/367 (100%)	367 (100%)	0	100	100
All	All	1560/1574 (99%)	1556 (100%)	4 (0%)	92	95

All (4) residues with a non-rotameric sidechain are listed below:

Mol	Chain	Res	Type
1	C	1484	LYS
1	C	1560	LYS
2	D	101	ASN
2	A	101	ASN

Sometimes sidechains can be flipped to improve hydrogen bonding and reduce clashes. All (22) such sidechains are listed below:

Mol	Chain	Res	Type
1	C	1507	HIS
1	C	1575	GLN
1	C	1594	HIS
2	D	101	ASN
2	D	102	ASN
2	D	216	ASN
2	D	300	ASN
3	E	37	HIS
3	E	101	ASN
3	E	334	ASN
3	E	337	ASN
2	A	101	ASN
2	A	102	ASN
2	A	216	ASN
2	A	256	GLN
2	A	300	ASN
3	B	37	HIS
3	B	101	ASN
3	B	193	GLN
3	B	197	ASN
3	B	331	GLN
3	B	337	ASN

5.3.3 RNA [i](#)

There are no RNA molecules in this entry.

5.4 Non-standard residues in protein, DNA, RNA chains [i](#)

There are no non-standard protein/DNA/RNA residues in this entry.

5.5 Carbohydrates [i](#)

There are no monosaccharides in this entry.

5.6 Ligand geometry [i](#)

Of 8 ligands modelled in this entry, 2 are monoatomic - leaving 6 for Mogul analysis.

In the following table, the Counts columns list the number of bonds (or angles) for which Mogul statistics could be retrieved, the number of bonds (or angles) that are observed in the model and

the number of bonds (or angles) that are defined in the Chemical Component Dictionary. The Link column lists molecule types, if any, to which the group is linked. The Z score for a bond length (or angle) is the number of standard deviations the observed value is removed from the expected value. A bond length (or angle) with $|Z| > 2$ is considered an outlier worth inspection. RMSZ is the root-mean-square of all Z scores of the bond lengths (or angles).

Mol	Type	Chain	Res	Link	Bond lengths			Bond angles		
					Counts	RMSZ	# Z > 2	Counts	RMSZ	# Z > 2
7	TA1	B	502	-	68,68,68	1.06	5 (7%)	105,105,105	1.33	13 (12%)
7	TA1	E	502	-	68,68,68	1.05	4 (5%)	105,105,105	1.31	12 (11%)
4	GTP	A	501	5	26,34,34	0.89	0	32,54,54	0.65	0
6	GDP	B	501	-	24,30,30	0.88	0	30,47,47	0.67	0
6	GDP	E	501	-	24,30,30	0.88	0	30,47,47	0.66	0
4	GTP	D	501	5	26,34,34	0.89	0	32,54,54	0.62	0

In the following table, the Chirals column lists the number of chiral outliers, the number of chiral centers analysed, the number of these observed in the model and the number defined in the Chemical Component Dictionary. Similar counts are reported in the Torsion and Rings columns. '-' means no outliers of that kind were identified.

Mol	Type	Chain	Res	Link	Chirals	Torsions	Rings
7	TA1	B	502	-	-	0/41/127/127	0/7/7/7
7	TA1	E	502	-	-	0/41/127/127	0/7/7/7
4	GTP	A	501	5	-	4/18/38/38	0/3/3/3
6	GDP	B	501	-	-	4/12/32/32	0/3/3/3
6	GDP	E	501	-	-	4/12/32/32	0/3/3/3
4	GTP	D	501	5	-	3/18/38/38	0/3/3/3

All (9) bond length outliers are listed below:

Mol	Chain	Res	Type	Atoms	Z	Observed(Å)	Ideal(Å)
7	B	502	TA1	C21-C20	5.39	1.81	1.55
7	E	502	TA1	C21-C20	5.37	1.81	1.55
7	E	502	TA1	C11-C10	4.39	1.64	1.54
7	B	502	TA1	C11-C10	4.24	1.64	1.54
7	E	502	TA1	C01-C02	2.59	1.66	1.57
7	B	502	TA1	C01-C02	2.56	1.66	1.57
7	B	502	TA1	C18-C10	2.21	1.62	1.57
7	E	502	TA1	C18-C10	2.17	1.62	1.57
7	B	502	TA1	C45-C24	2.02	1.57	1.54

All (25) bond angle outliers are listed below:

Mol	Chain	Res	Type	Atoms	Z	Observed(°)	Ideal(°)
7	B	502	TA1	C47-C45-C46	-5.32	90.60	106.26
7	E	502	TA1	C24-C21-C20	5.32	126.18	113.38
7	E	502	TA1	C47-C45-C46	-5.26	90.77	106.26
7	B	502	TA1	C24-C21-C20	5.05	125.53	113.38
7	E	502	TA1	O11-C26-C25	3.97	119.40	109.78
7	B	502	TA1	O11-C26-C25	3.56	118.41	109.78
7	B	502	TA1	C18-C20-C21	3.21	128.78	121.44
7	B	502	TA1	C14-C11-C15	-3.18	82.02	85.40
7	E	502	TA1	C18-C20-C21	3.09	128.49	121.44
7	E	502	TA1	C14-C11-C15	-3.04	82.17	85.40
7	B	502	TA1	O09-C21-C24	2.96	113.79	109.83
7	B	502	TA1	O08-C20-C21	-2.57	115.95	119.30
7	E	502	TA1	O09-C21-C24	2.43	113.07	109.83
7	E	502	TA1	O08-C20-C21	-2.40	116.17	119.30
7	B	502	TA1	O02-C02-C10	2.40	112.61	108.17
7	E	502	TA1	O02-C02-C10	2.31	112.44	108.17
7	B	502	TA1	C47-C45-C24	2.27	122.06	112.83
7	B	502	TA1	C46-C45-C01	2.21	116.05	111.11
7	B	502	TA1	C47-C45-C01	-2.16	106.29	111.11
7	B	502	TA1	C11-O04-C12	2.14	124.60	119.06
7	E	502	TA1	C46-C45-C01	2.14	115.88	111.11
7	E	502	TA1	C11-O04-C12	2.11	124.52	119.06
7	E	502	TA1	C43-C01-C45	2.06	115.29	111.50
7	E	502	TA1	C47-C45-C24	2.05	121.15	112.83
7	B	502	TA1	C43-C01-C45	2.05	115.27	111.50

There are no chirality outliers.

All (15) torsion outliers are listed below:

Mol	Chain	Res	Type	Atoms
4	D	501	GTP	C5'-O5'-PA-O3A
4	A	501	GTP	C5'-O5'-PA-O3A
4	A	501	GTP	C5'-O5'-PA-O1A
6	E	501	GDP	C5'-O5'-PA-O2A
6	B	501	GDP	C5'-O5'-PA-O2A
6	E	501	GDP	C5'-O5'-PA-O3A
6	B	501	GDP	C5'-O5'-PA-O3A
4	D	501	GTP	PB-O3A-PA-O1A
4	A	501	GTP	PB-O3A-PA-O1A
4	D	501	GTP	C5'-O5'-PA-O1A
6	E	501	GDP	C5'-O5'-PA-O1A
6	B	501	GDP	C5'-O5'-PA-O1A
6	E	501	GDP	C4'-C5'-O5'-PA

Continued on next page...

Continued from previous page...

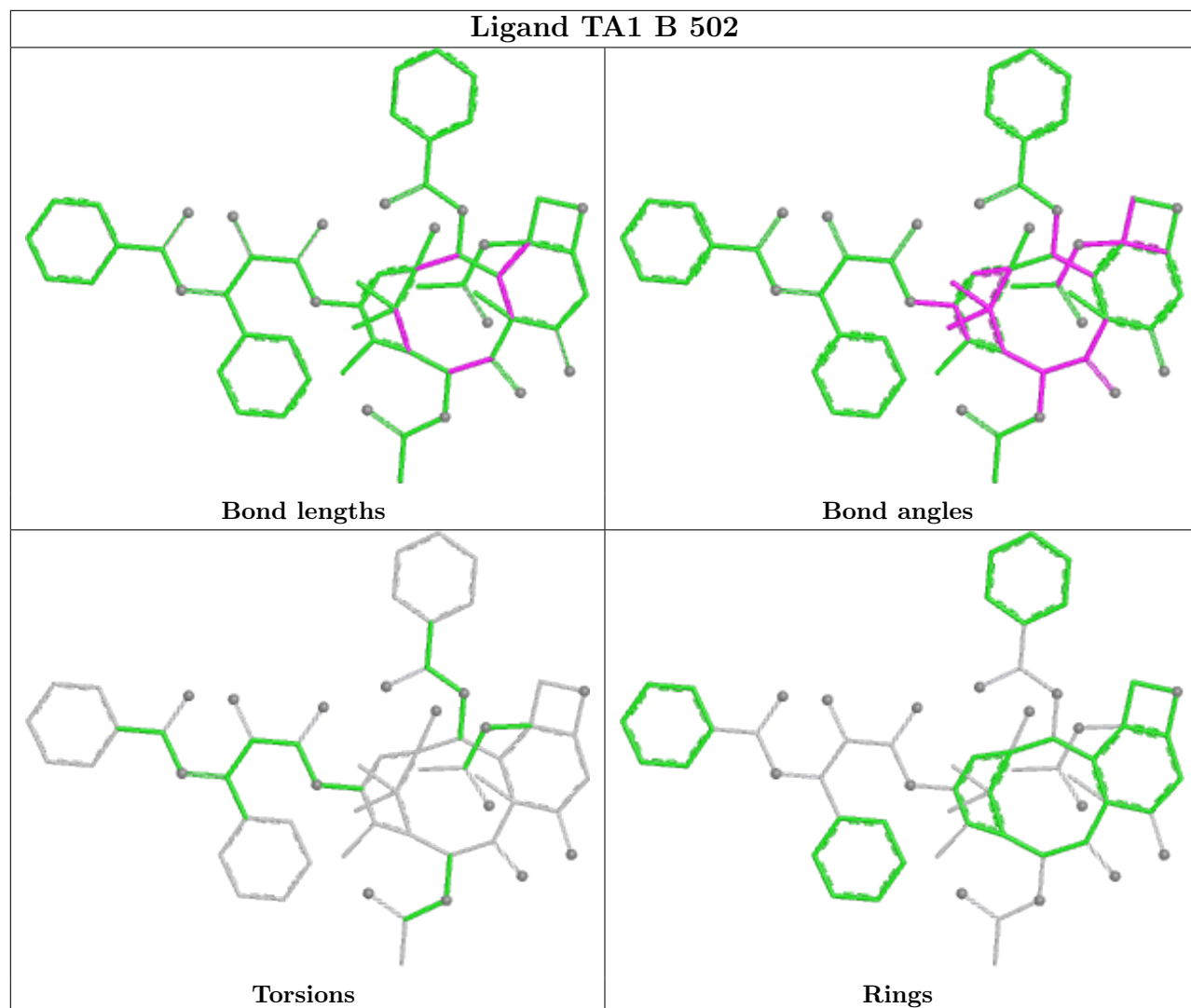
Mol	Chain	Res	Type	Atoms
6	B	501	GDP	C4'-C5'-O5'-PA
4	A	501	GTP	PA-O3A-PB-O2B

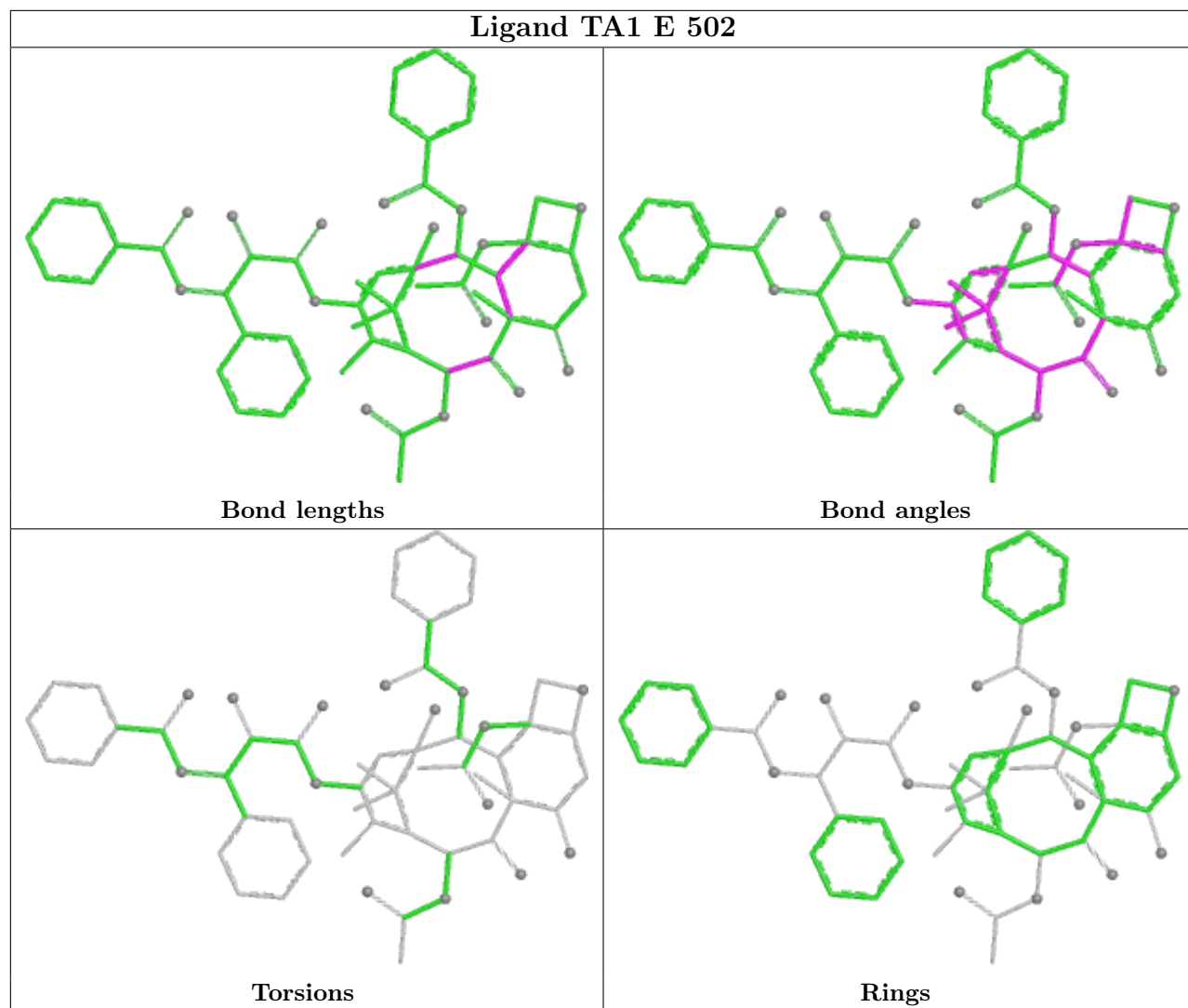
There are no ring outliers.

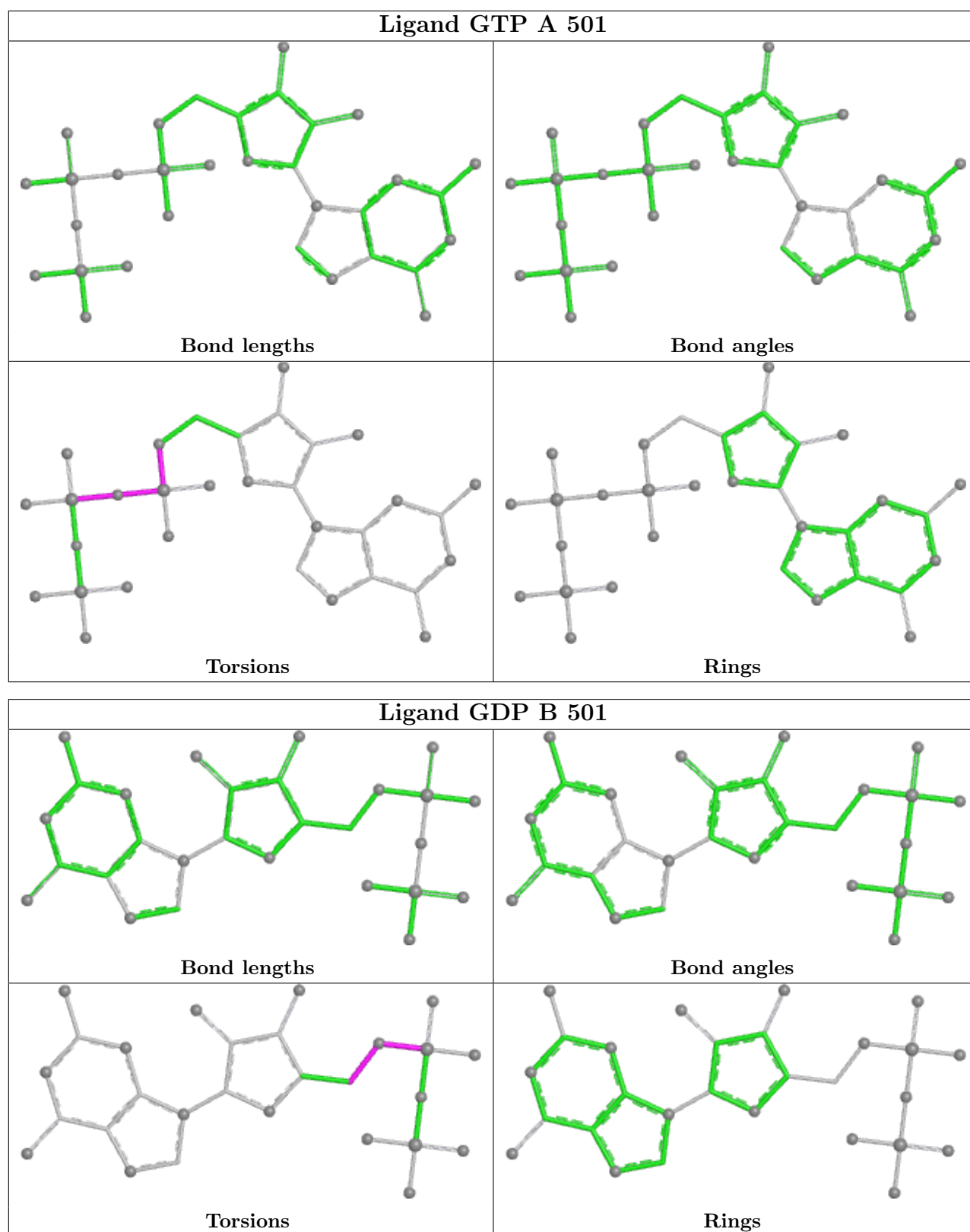
3 monomers are involved in 12 short contacts:

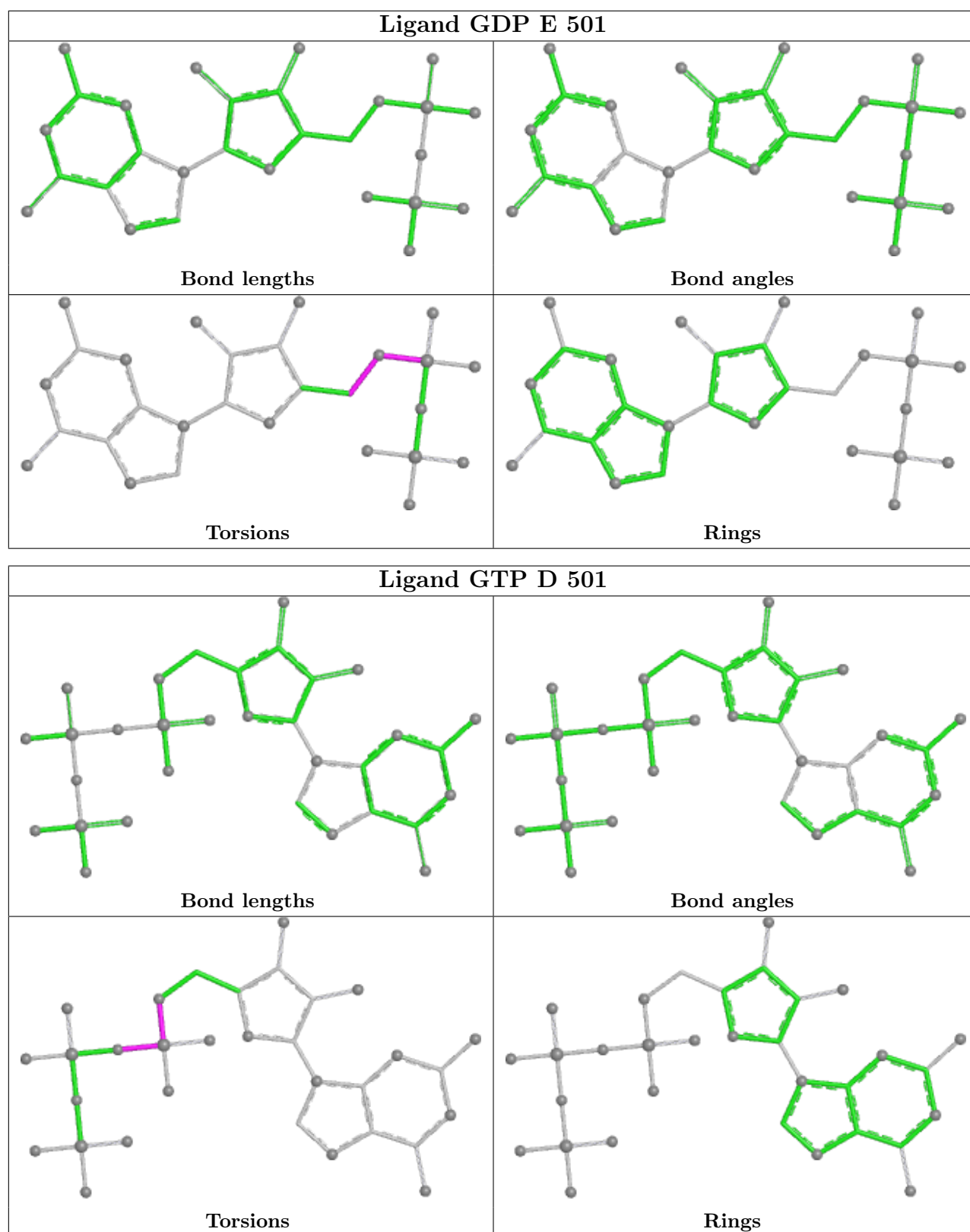
Mol	Chain	Res	Type	Clashes	Symm-Clashes
7	B	502	TA1	6	0
7	E	502	TA1	5	0
6	E	501	GDP	1	0

The following is a two-dimensional graphical depiction of Mogul quality analysis of bond lengths, bond angles, torsion angles, and ring geometry for all instances of the Ligand of Interest. In addition, ligands with molecular weight > 250 and outliers as shown on the validation Tables will also be included. For torsion angles, if less than 5% of the Mogul distribution of torsion angles is within 10 degrees of the torsion angle in question, then that torsion angle is considered an outlier. Any bond that is central to one or more torsion angles identified as an outlier by Mogul will be highlighted in the graph. For rings, the root-mean-square deviation (RMSD) between the ring in question and similar rings identified by Mogul is calculated over all ring torsion angles. If the average RMSD is greater than 60 degrees and the minimal RMSD between the ring in question and any Mogul-identified rings is also greater than 60 degrees, then that ring is considered an outlier. The outliers are highlighted in purple. The color gray indicates Mogul did not find sufficient equivalents in the CSD to analyse the geometry.









5.7 Other polymers [i](#)

There are no such residues in this entry.

5.8 Polymer linkage issues

There are no chain breaks in this entry.

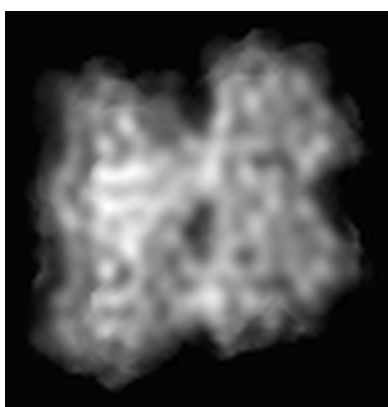
6 Map visualisation [i](#)

This section contains visualisations of the EMDB entry EMD-4156. These allow visual inspection of the internal detail of the map and identification of artifacts.

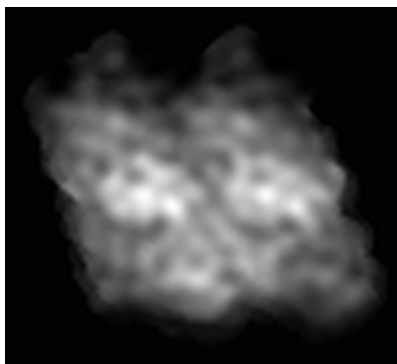
No raw map or half-maps were deposited for this entry and therefore no images, graphs, etc. pertaining to the raw map can be shown.

6.1 Orthogonal projections [i](#)

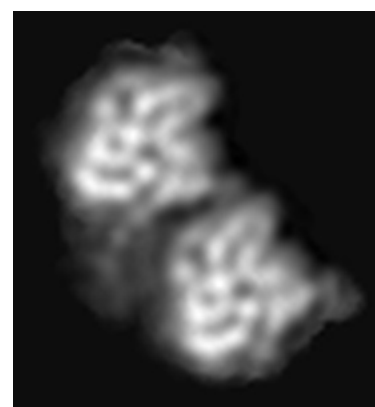
6.1.1 Primary map



X



Y

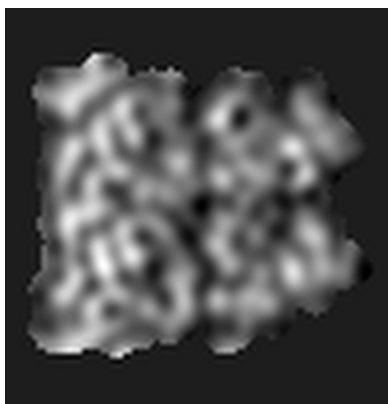


Z

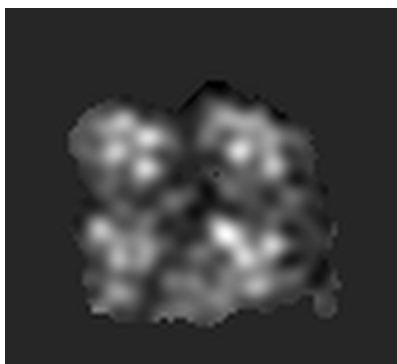
The images above show the map projected in three orthogonal directions.

6.2 Central slices [i](#)

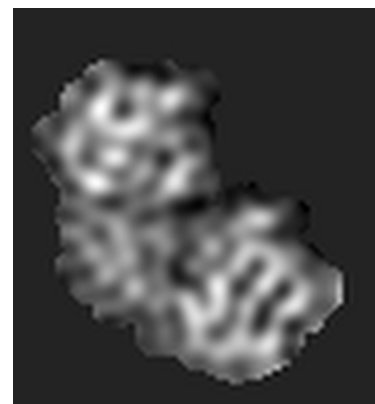
6.2.1 Primary map



X Index: 39



Y Index: 42

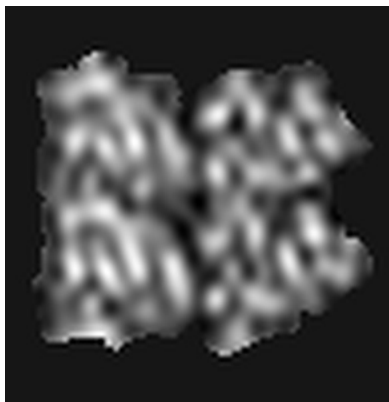


Z Index: 44

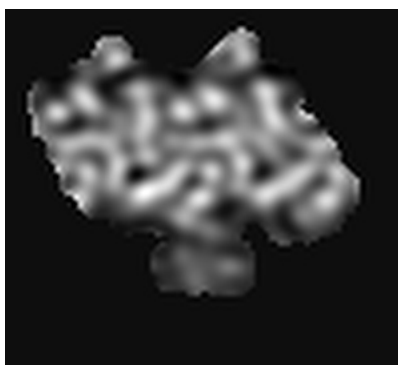
The images above show central slices of the map in three orthogonal directions.

6.3 Largest variance slices [i](#)

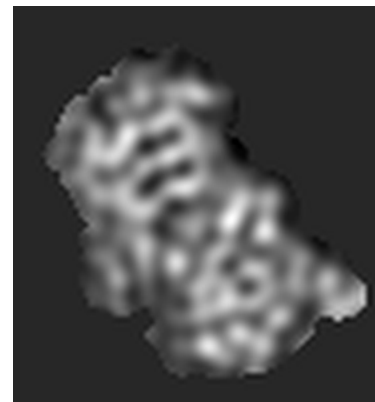
6.3.1 Primary map



X Index: 37



Y Index: 21

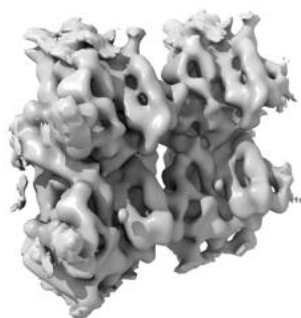


Z Index: 51

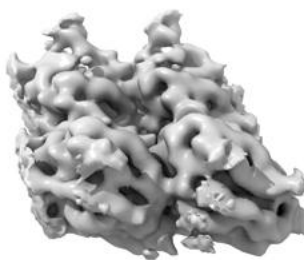
The images above show the largest variance slices of the map in three orthogonal directions.

6.4 Orthogonal surface views [i](#)

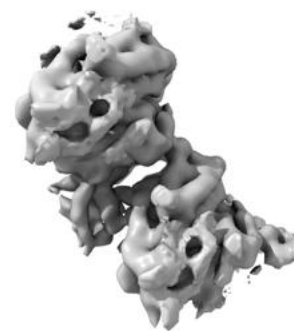
6.4.1 Primary map



X



Y



Z

The images above show the 3D surface view of the map at the recommended contour level 0.0405. These images, in conjunction with the slice images, may facilitate assessment of whether an appropriate contour level has been provided.

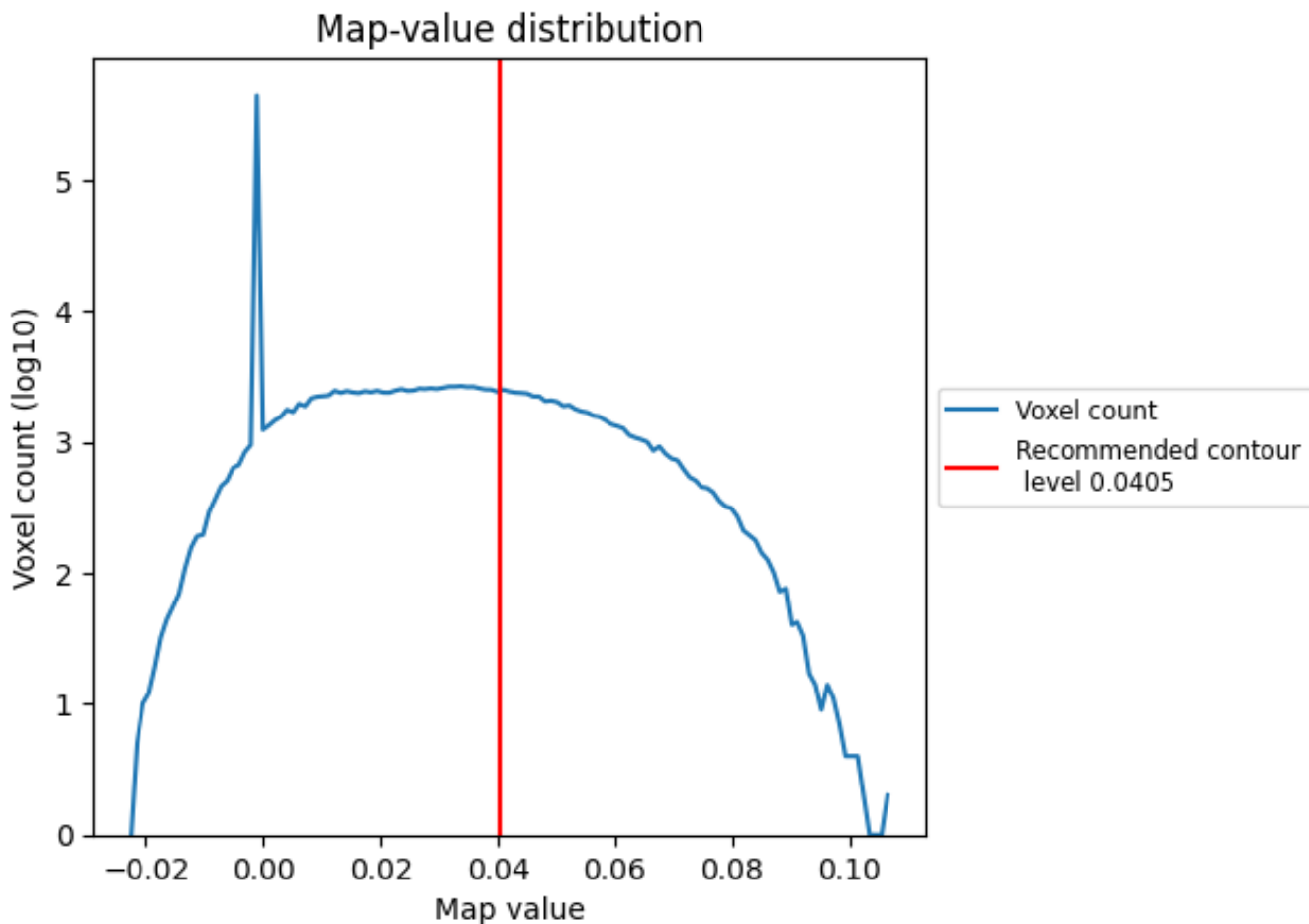
6.5 Mask visualisation

This section was not generated. No masks/segmentation were deposited.

7 Map analysis [i](#)

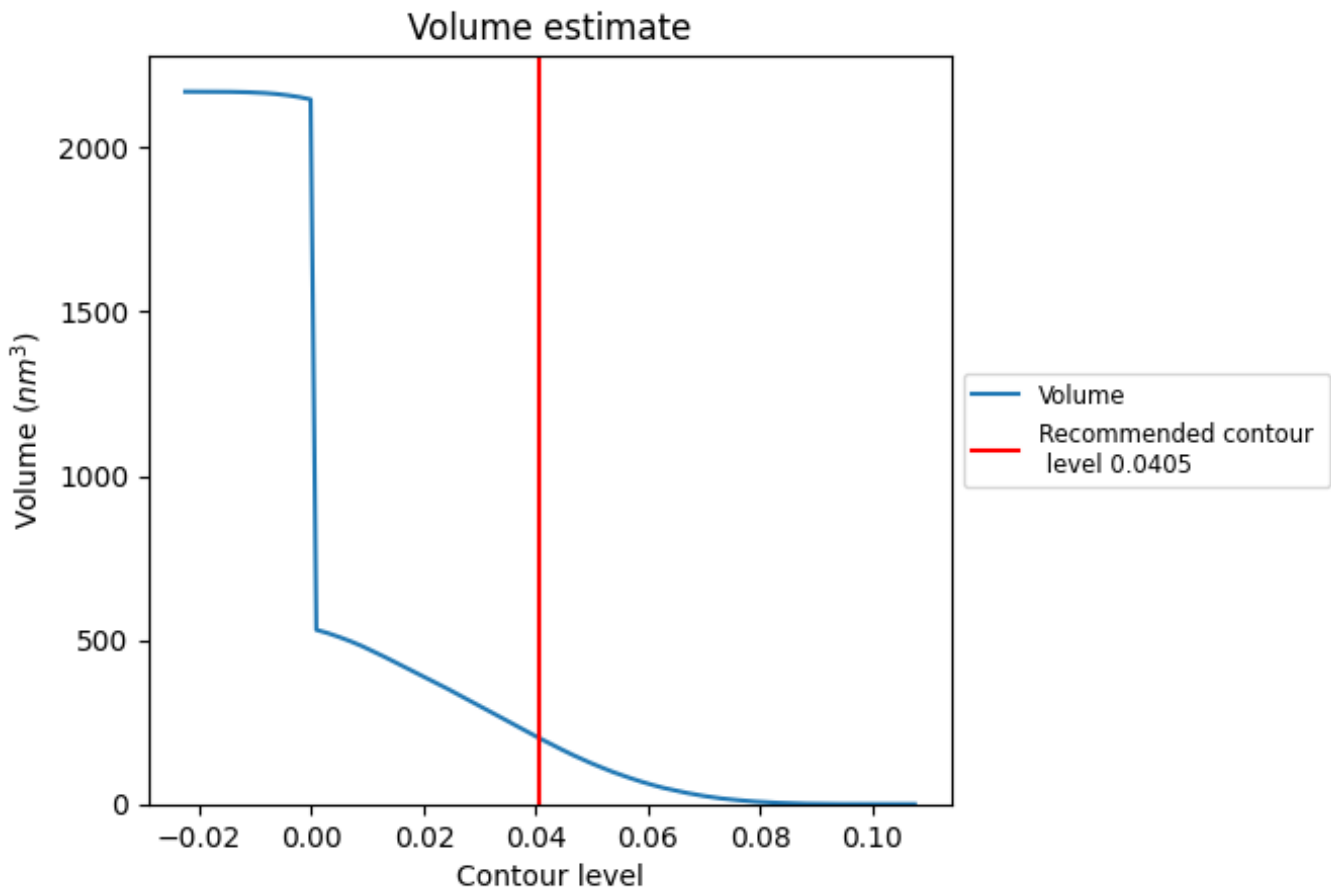
This section contains the results of statistical analysis of the map.

7.1 Map-value distribution [i](#)



The map-value distribution is plotted in 128 intervals along the x-axis. The y-axis is logarithmic. A spike in this graph at zero usually indicates that the volume has been masked.

7.2 Volume estimate [\(i\)](#)



The volume at the recommended contour level is 202 nm³; this corresponds to an approximate mass of 182 kDa.

The volume estimate graph shows how the enclosed volume varies with the contour level. The recommended contour level is shown as a vertical line and the intersection between the line and the curve gives the volume of the enclosed surface at the given level.

7.3 Rotationally averaged power spectrum [\(i\)](#)

This section was not generated. The rotationally averaged power spectrum is only generated for cubic maps.

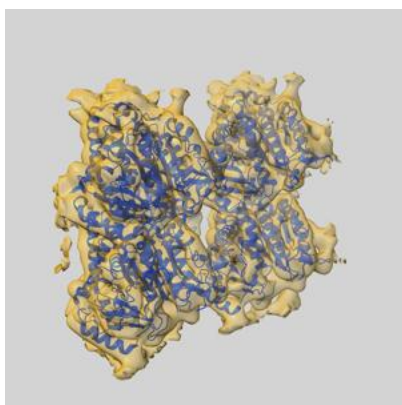
8 Fourier-Shell correlation

This section was not generated. No FSC curve or half-maps provided.

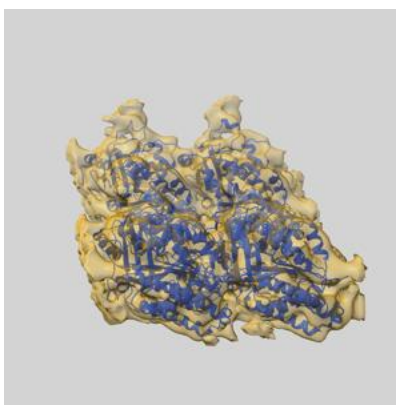
9 Map-model fit [i](#)

This section contains information regarding the fit between EMDB map EMD-4156 and PDB model 5M54. Per-residue inclusion information can be found in section 3 on page 7.

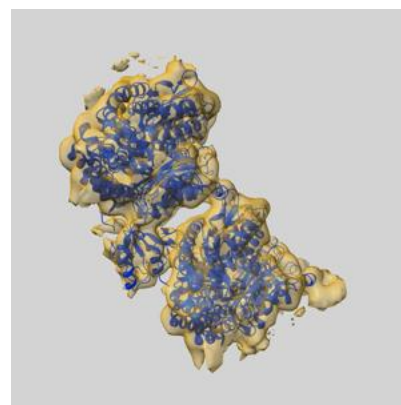
9.1 Map-model overlay [i](#)



X



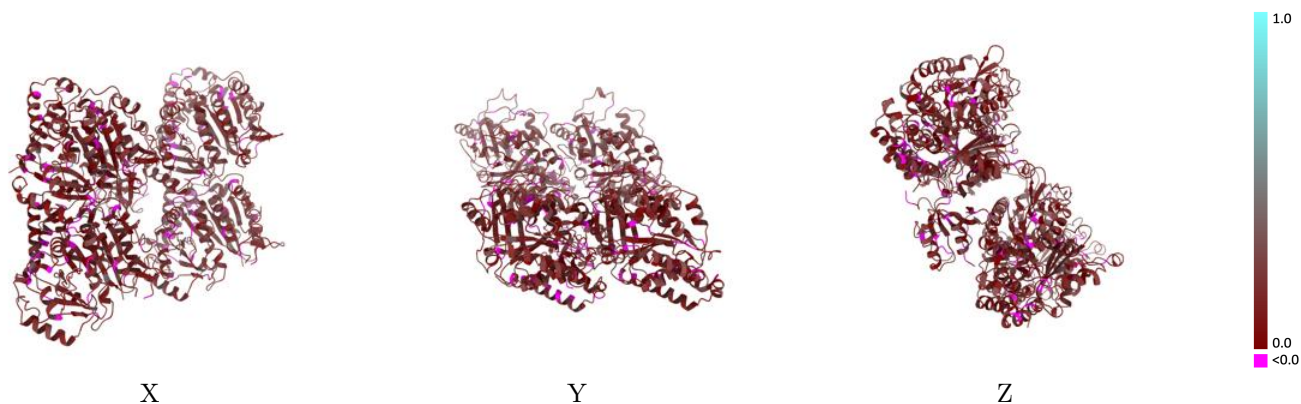
Y



Z

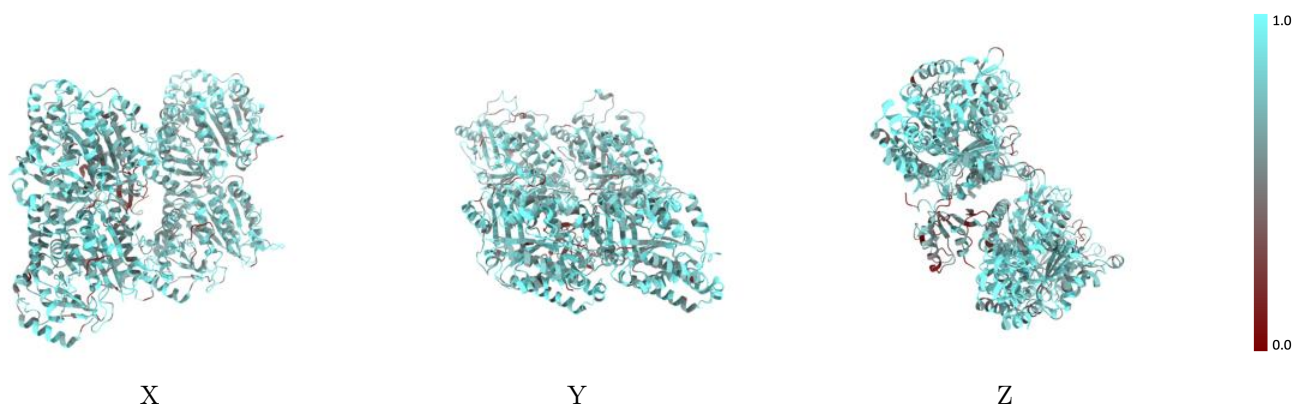
The images above show the 3D surface view of the map at the recommended contour level 0.0405 at 50% transparency in yellow overlaid with a ribbon representation of the model coloured in blue. These images allow for the visual assessment of the quality of fit between the atomic model and the map.

9.2 Q-score mapped to coordinate model [i](#)



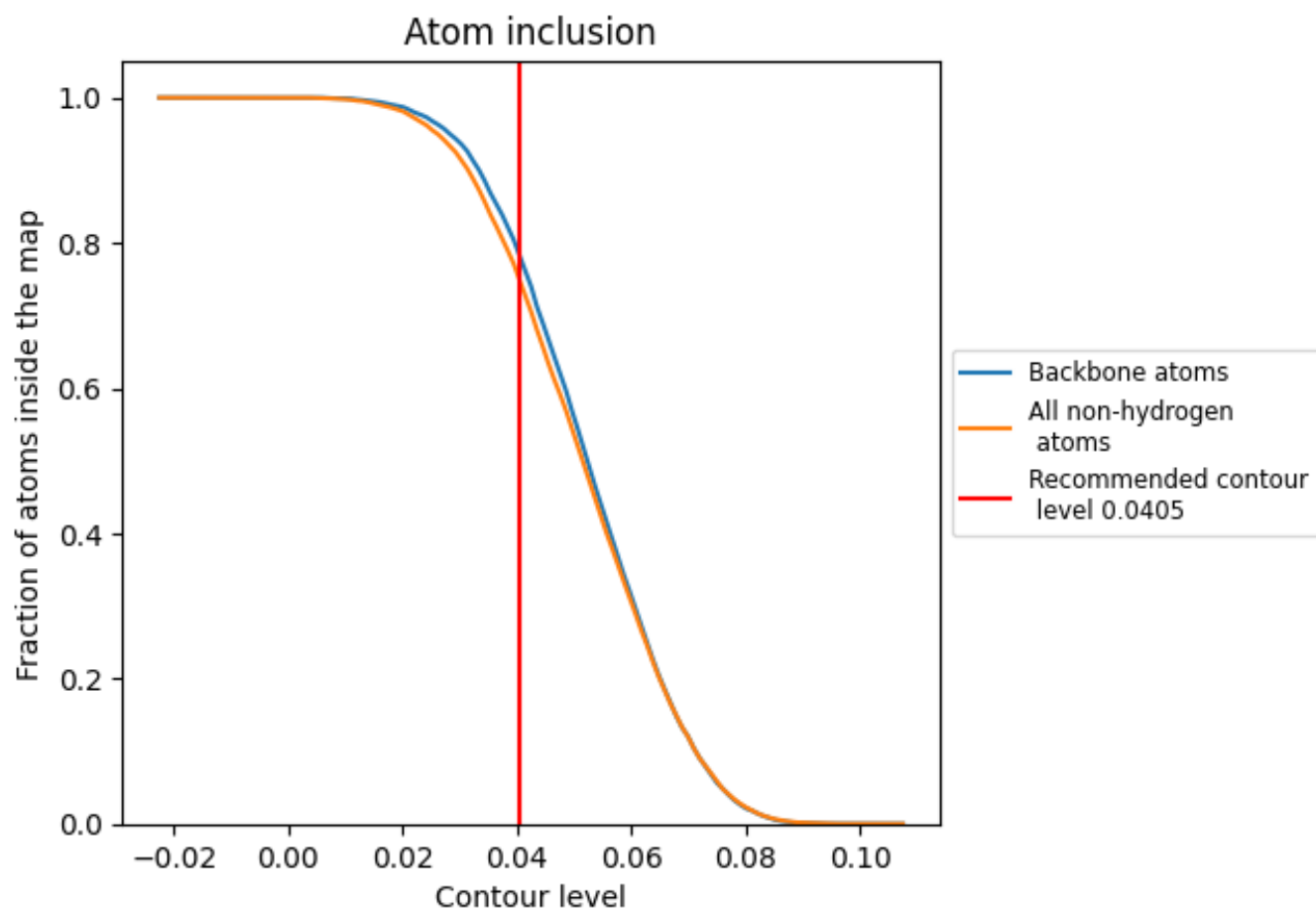
The images above show the model with each residue coloured according to its Q-score. This shows their resolvability in the map with higher Q-score values reflecting better resolvability. Please note: Q-score is calculating the resolvability of atoms, and thus high values are only expected at resolutions at which atoms can be resolved. Low Q-score values may therefore be expected for many entries.

9.3 Atom inclusion mapped to coordinate model [i](#)



The images above show the model with each residue coloured according to its atom inclusion. This shows to what extent they are inside the map at the recommended contour level (0.0405).













9.4 Atom inclusion [i](#)



At the recommended contour level, 78% of all backbone atoms, 75% of all non-hydrogen atoms, are inside the map.

9.5 Map-model fit summary

The table lists the average atom inclusion at the recommended contour level (0.0405) and Q-score for the entire model and for each chain.

Chain	Atom inclusion	Q-score
All	 0.7487	 0.1470
A	 0.7767	 0.1490
B	 0.7783	 0.1490
C	 0.4491	 0.1260
D	 0.7779	 0.1470
E	 0.7771	 0.1490

