



wwPDB X-ray Structure Validation Summary Report ⓘ

May 29, 2020 – 10:01 am BST

PDB ID : 1MDU
Title : Crystal structure of the chicken actin trimer complexed with human gelsolin segment 1 (GS-1)
Authors : Dawson, J.F.; Sablin, E.P.; Spudich, J.A.; Fletterick, R.J.
Deposited on : 2002-08-07
Resolution : 2.20 Å(reported)

This is a wwPDB X-ray Structure Validation Summary Report for a publicly released PDB entry.

We welcome your comments at validation@mail.wwpdb.org

A user guide is available at

<https://www.wwpdb.org/validation/2017/XrayValidationReportHelp>

with specific help available everywhere you see the ⓘ symbol.

The following versions of software and data (see [references ⓘ](#)) were used in the production of this report:

MolProbity : 4.02b-467
Mogul : 1.8.5 (274361), CSD as541be (2020)
Xtriage (Phenix) : 1.13
EDS : 2.11
buster-report : 1.1.7 (2018)
Percentile statistics : 20191225.v01 (using entries in the PDB archive December 25th 2019)
Refmac : 5.8.0158
CCP4 : 7.0.044 (Gargrove)
Ideal geometry (proteins) : Engh & Huber (2001)
Ideal geometry (DNA, RNA) : Parkinson et al. (1996)
Validation Pipeline (wwPDB-VP) : 2.11

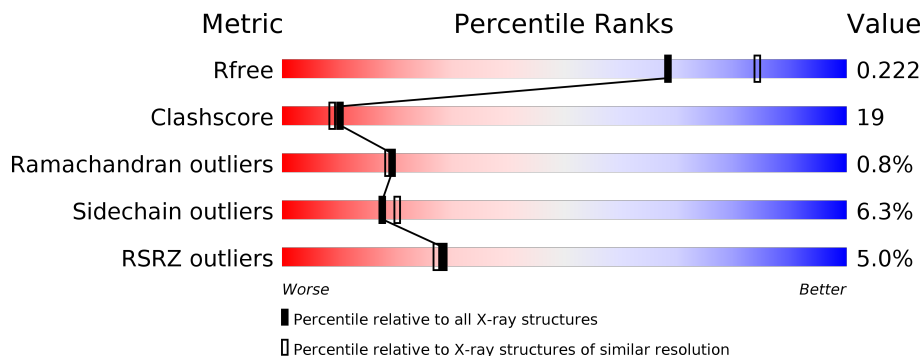
1 Overall quality at a glance

The following experimental techniques were used to determine the structure:

X-RAY DIFFRACTION

The reported resolution of this entry is 2.20 Å.

Percentile scores (ranging between 0-100) for global validation metrics of the entry are shown in the following graphic. The table shows the number of entries on which the scores are based.



Metric	Whole archive (#Entries)	Similar resolution (#Entries, resolution range(Å))
R_{free}	130704	4898 (2.20-2.20)
Clashscore	141614	5594 (2.20-2.20)
Ramachandran outliers	138981	5503 (2.20-2.20)
Sidechain outliers	138945	5504 (2.20-2.20)
RSRZ outliers	127900	4800 (2.20-2.20)

The table below summarises the geometric issues observed across the polymeric chains and their fit to the electron density. The red, orange, yellow and green segments on the lower bar indicate the fraction of residues that contain outliers for ≥ 3 , 2, 1 and 0 types of geometric quality criteria respectively. A grey segment represents the fraction of residues that are not modelled. The numeric value for each fraction is indicated below the corresponding segment, with a dot representing fractions $\leq 5\%$. The upper red bar (where present) indicates the fraction of residues that have poor fit to the electron density. The numeric value is given above the bar.

Mol	Chain	Length	Quality of chain
1	A	125	 3% 72% 25%
1	D	125	 3% 77% 21%
2	B	377	 4% 65% 27%
2	E	377	 7% 66% 25%

The following table lists non-polymeric compounds, carbohydrate monomers and non-standard residues in protein, DNA, RNA chains that are outliers for geometric or electron-density-fit crite-

ria:

Mol	Type	Chain	Res	Chirality	Geometry	Clashes	Electron density
4	TRS	A	472	-	X	-	-

2 Entry composition [i](#)

There are 6 unique types of molecules in this entry. The entry contains 8159 atoms, of which 0 are hydrogens and 0 are deuteriums.

In the tables below, the ZeroOcc column contains the number of atoms modelled with zero occupancy, the AltConf column contains the number of residues with at least one atom in alternate conformation and the Trace column contains the number of residues modelled with at most 2 atoms.

- Molecule 1 is a protein called gelsolin precursor.

Mol	Chain	Residues	Atoms					ZeroOcc	AltConf	Trace
			Total	C	N	O	S			
1	A	124	989	640	164	184	1	0	0	0
1	D	123	982	635	163	183	1	0	0	0

- Molecule 2 is a protein called a-actin.

Mol	Chain	Residues	Atoms					ZeroOcc	AltConf	Trace
			Total	C	N	O	S			
2	B	361	2815	1784	472	541	18	0	0	0
2	E	362	2825	1790	475	542	18	0	0	0

There are 2 discrepancies between the modelled and reference sequences:

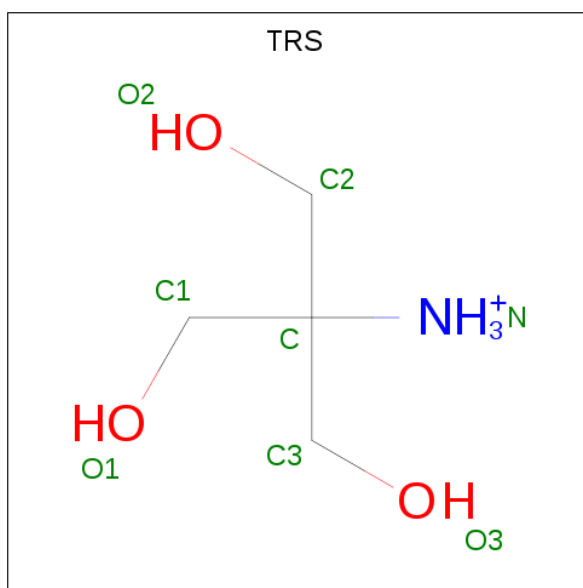
Chain	Residue	Modelled	Actual	Comment	Reference
B	75	HIC	HIS	MODIFIED RESIDUE	UNP P68139
E	75	HIC	HIS	MODIFIED RESIDUE	UNP P68139

- Molecule 3 is CALCIUM ION (three-letter code: CA) (formula: Ca).

Mol	Chain	Residues	Atoms		ZeroOcc	AltConf
3	B	2	Total 2	Ca 2	0	0
3	A	2	Total 2	Ca 2	0	0
3	D	2	Total 2	Ca 2	0	0
3	E	1	Total 1	Ca 1	0	0

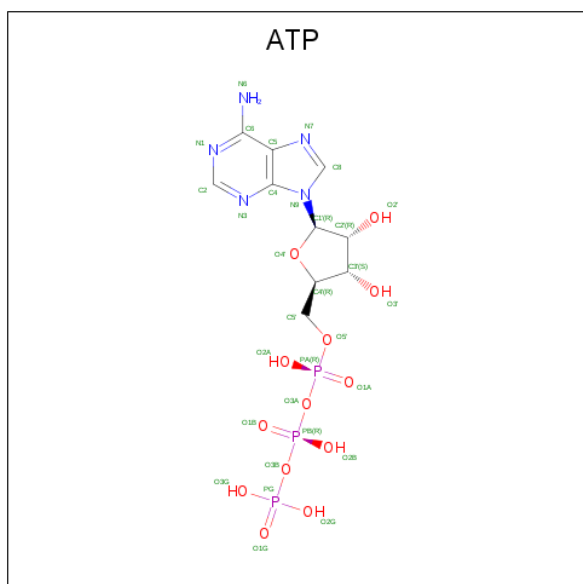
- Molecule 4 is 2-AMINO-2-HYDROXYMETHYL-PROPANE-1,3-DIOL (three-letter code:

TRS) (formula: C₄H₁₂NO₃).



Mol	Chain	Residues	Atoms				ZeroOcc	AltConf
			Total	C	N	O		
4	A	1	8	4	1	3	0	0

- Molecule 5 is ADENOSINE-5'-TRIPHOSPHATE (three-letter code: ATP) (formula: C₁₀H₁₆N₅O₁₃P₃).

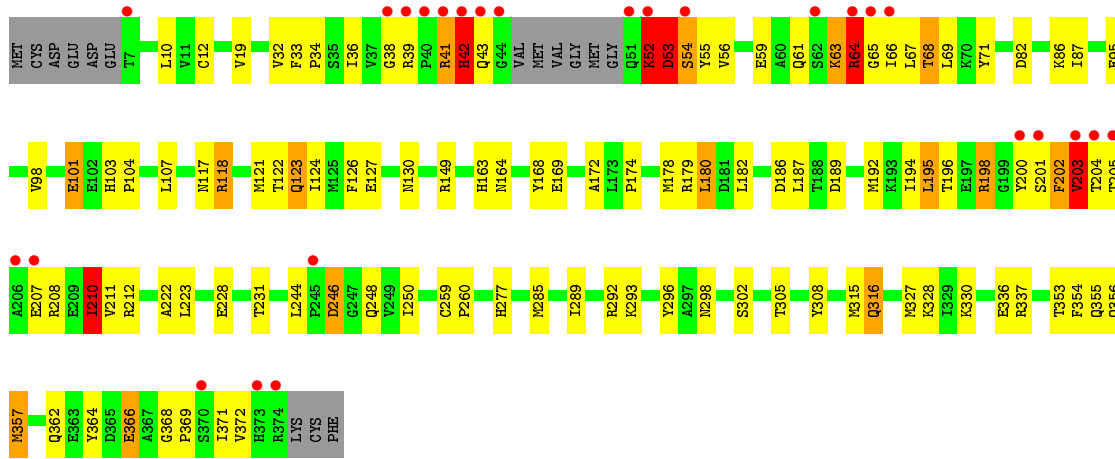


Continued from previous page...

Mol	Chain	Residues	Atoms					ZeroOcc	AltConf
			Total	C	N	O	P		
5	E	1	31	10	5	13	3	0	0

- Molecule 6 is water.

Mol	Chain	Residues	Atoms		ZeroOcc	AltConf
6	A	67	Total 67	O 67	0	0
6	B	179	Total 179	O 179	0	0
6	D	64	Total 64	O 64	0	0
6	E	161	Total 161	O 161	0	0



4 Data and refinement statistics

Property	Value	Source
Space group	P 1 21 1	Depositor
Cell constants a, b, c, α , β , γ	67.19Å 75.94Å 96.75Å 90.00° 91.87° 90.00°	Depositor
Resolution (Å)	25.00 – 2.20 24.49 – 2.20	Depositor EDS
% Data completeness (in resolution range)	91.4 (25.00-2.20) 91.5 (24.49-2.20)	Depositor EDS
R_{merge}	0.06	Depositor
R_{sym}	0.06	Depositor
$\langle I/\sigma(I) \rangle$ ¹	4.65 (at 2.19Å)	Xtrriage
Refinement program	CNS	Depositor
R, R_{free}	0.193 , 0.233 0.185 , 0.222	Depositor DCC
R_{free} test set	2278 reflections (5.03%)	wwPDB-VP
Wilson B-factor (Å ²)	25.6	Xtrriage
Anisotropy	0.611	Xtrriage
Bulk solvent k_{sol} (e/Å ³), B_{sol} (Å ²)	0.37 , 62.8	EDS
L-test for twinning ²	$\langle L \rangle = 0.48$, $\langle L^2 \rangle = 0.31$	Xtrriage
Estimated twinning fraction	0.034 for h,-k,-l	Xtrriage
F_o, F_c correlation	0.95	EDS
Total number of atoms	8159	wwPDB-VP
Average B, all atoms (Å ²)	35.0	wwPDB-VP

Xtrriage's analysis on translational NCS is as follows: *The largest off-origin peak in the Patterson function is 12.62% of the height of the origin peak. No significant pseudotranslation is detected.*

¹Intensities estimated from amplitudes.

²Theoretical values of $\langle |L| \rangle$, $\langle L^2 \rangle$ for acentric reflections are 0.5, 0.333 respectively for untwinned datasets, and 0.375, 0.2 for perfectly twinned datasets.

5 Model quality [i](#)

5.1 Standard geometry [i](#)

Bond lengths and bond angles in the following residue types are not validated in this section: TRS, HIC, CA, ATP

The Z score for a bond length (or angle) is the number of standard deviations the observed value is removed from the expected value. A bond length (or angle) with $|Z| > 5$ is considered an outlier worth inspection. RMSZ is the root-mean-square of all Z scores of the bond lengths (or angles).

Mol	Chain	Bond lengths		Bond angles	
		RMSZ	# Z >5	RMSZ	# Z >5
1	A	0.54	0/1015	0.72	0/1372
1	D	0.52	0/1008	0.69	0/1362
2	B	0.55	0/2862	0.76	2/3879 (0.1%)
2	E	0.59	0/2873	0.77	1/3894 (0.0%)
All	All	0.56	0/7758	0.75	3/10507 (0.0%)

Chiral center outliers are detected by calculating the chiral volume of a chiral center and verifying if the center is modelled as a planar moiety or with the opposite hand. A planarity outlier is detected by checking planarity of atoms in a peptide group, atoms in a mainchain group or atoms of a sidechain that are expected to be planar.

Mol	Chain	#Chirality outliers	#Planarity outliers
2	B	0	2
2	E	0	6
All	All	0	8

There are no bond length outliers.

All (3) bond angle outliers are listed below:

Mol	Chain	Res	Type	Atoms	Z	Observed(°)	Ideal(°)
2	E	64	ARG	NE-CZ-NH2	-6.47	117.07	120.30
2	B	64	ARG	CD-NE-CZ	-5.85	115.42	123.60
2	B	179	ARG	CD-NE-CZ	-5.56	115.82	123.60

There are no chirality outliers.

5 of 8 planarity outliers are listed below:

Mol	Chain	Res	Type	Group
2	B	272	GLU	Mainchain

Continued on next page...

Continued from previous page...

Mol	Chain	Res	Type	Group
2	B	64	ARG	Sidechain
2	E	42	HIS	Peptide
2	E	54	SER	Mainchain
2	E	64	ARG	Sidechain

5.2 Too-close contacts [\(i\)](#)

In the following table, the Non-H and H(model) columns list the number of non-hydrogen atoms and hydrogen atoms in the chain respectively. The H(added) column lists the number of hydrogen atoms added and optimized by MolProbity. The Clashes column lists the number of clashes within the asymmetric unit, whereas Symm-Clashes lists symmetry related clashes.

Mol	Chain	Non-H	H(model)	H(added)	Clashes	Symm-Clashes
1	A	989	0	952	34	0
1	D	982	0	943	15	0
2	B	2815	0	2778	111	0
2	E	2825	0	2785	135	0
3	A	2	0	0	0	0
3	B	2	0	0	0	0
3	D	2	0	0	0	0
3	E	1	0	0	0	0
4	A	8	0	12	1	0
5	B	31	0	12	1	0
5	E	31	0	12	0	0
6	A	67	0	0	4	0
6	B	179	0	0	14	0
6	D	64	0	0	1	0
6	E	161	0	0	5	0
All	All	8159	0	7494	285	0

The all-atom clashscore is defined as the number of clashes found per 1000 atoms (including hydrogen atoms). The all-atom clashscore for this structure is 19.

The worst 5 of 285 close contacts within the same asymmetric unit are listed below, sorted by their clash magnitude.

Atom-1	Atom-2	Interatomic distance (Å)	Clash overlap (Å)
2:E:196:THR:HG22	2:E:201:SER:CB	1.42	1.48
2:E:210:ILE:HD11	2:E:244:LEU:CD2	1.63	1.28
2:E:210:ILE:CD1	2:E:244:LEU:CD2	2.27	1.13
2:E:244:LEU:HD11	2:E:250:ILE:HD11	1.11	1.10

Continued on next page...

Continued from previous page...

Atom-1	Atom-2	Interatomic distance (Å)	Clash overlap (Å)
2:E:207:GLU:HG2	2:E:211:VAL:HG23	1.25	1.09

There are no symmetry-related clashes.

5.3 Torsion angles [i](#)

5.3.1 Protein backbone [i](#)

In the following table, the Percentiles column shows the percent Ramachandran outliers of the chain as a percentile score with respect to all X-ray entries followed by that with respect to entries of similar resolution.

The Analysed column shows the number of residues for which the backbone conformation was analysed, and the total number of residues.

Mol	Chain	Analysed	Favoured	Allowed	Outliers	Percentiles	
1	A	122/125 (98%)	114 (93%)	8 (7%)	0	100	100
1	D	121/125 (97%)	117 (97%)	4 (3%)	0	100	100
2	B	356/377 (94%)	338 (95%)	17 (5%)	1 (0%)	41	46
2	E	357/377 (95%)	333 (93%)	17 (5%)	7 (2%)	7	4
All	All	956/1004 (95%)	902 (94%)	46 (5%)	8 (1%)	19	19

5 of 8 Ramachandran outliers are listed below:

Mol	Chain	Res	Type
2	E	52	LYS
2	E	42	HIS
2	E	246	ASP
2	B	205	THR
2	E	101	GLU

5.3.2 Protein sidechains [i](#)

In the following table, the Percentiles column shows the percent sidechain outliers of the chain as a percentile score with respect to all X-ray entries followed by that with respect to entries of similar resolution.

The Analysed column shows the number of residues for which the sidechain conformation was analysed, and the total number of residues.

Mol	Chain	Analysed	Rotameric	Outliers	Percentiles	
1	A	102/103 (99%)	98 (96%)	4 (4%)	32	41
1	D	101/103 (98%)	95 (94%)	6 (6%)	19	23
2	B	303/319 (95%)	287 (95%)	16 (5%)	22	27
2	E	304/319 (95%)	279 (92%)	25 (8%)	11	11
All	All	810/844 (96%)	759 (94%)	51 (6%)	18	20

5 of 51 residues with a non-rotameric sidechain are listed below:

Mol	Chain	Res	Type
1	D	53	ARG
2	E	52	LYS
2	E	355	GLN
1	D	68	GLU
2	E	53	ASP

Some sidechains can be flipped to improve hydrogen bonding and reduce clashes. 5 of 17 such sidechains are listed below:

Mol	Chain	Res	Type
1	D	33	ASN
1	D	51	GLN
2	E	123	GLN
2	B	356	GLN
2	E	227	ASN

5.3.3 RNA [i](#)

There are no RNA molecules in this entry.

5.4 Non-standard residues in protein, DNA, RNA chains [i](#)

2 non-standard protein/DNA/RNA residues are modelled in this entry.

In the following table, the Counts columns list the number of bonds (or angles) for which Mogul statistics could be retrieved, the number of bonds (or angles) that are observed in the model and the number of bonds (or angles) that are defined in the Chemical Component Dictionary. The Link column lists molecule types, if any, to which the group is linked. The Z score for a bond length (or angle) is the number of standard deviations the observed value is removed from the expected value. A bond length (or angle) with $|Z| > 2$ is considered an outlier worth inspection. RMSZ is the root-mean-square of all Z scores of the bond lengths (or angles).

Mol	Type	Chain	Res	Link	Bond lengths			Bond angles		
					Counts	RMSZ	# Z > 2	Counts	RMSZ	# Z > 2
2	HIC	E	75	2	8,11,12	4.66	2 (25%)	6,14,16	1.60	2 (33%)
2	HIC	B	75	2	8,11,12	2.89	1 (12%)	6,14,16	1.10	0

In the following table, the Chirals column lists the number of chiral outliers, the number of chiral centers analysed, the number of these observed in the model and the number defined in the Chemical Component Dictionary. Similar counts are reported in the Torsion and Rings columns. '-' means no outliers of that kind were identified.

Mol	Type	Chain	Res	Link	Chirals	Torsions	Rings
2	HIC	E	75	2	-	0/5/6/8	0/1/1/1
2	HIC	B	75	2	-	0/5/6/8	0/1/1/1

All (3) bond length outliers are listed below:

Mol	Chain	Res	Type	Atoms	Z	Observed(Å)	Ideal(Å)
2	E	75	HIC	CZ-NE2	-12.83	1.13	1.48
2	B	75	HIC	CZ-NE2	-7.94	1.26	1.48
2	E	75	HIC	CD2-CG	2.55	1.40	1.36

All (2) bond angle outliers are listed below:

Mol	Chain	Res	Type	Atoms	Z	Observed(°)	Ideal(°)
2	E	75	HIC	CZ-NE2-CD2	3.23	137.53	126.31
2	E	75	HIC	CZ-NE2-CE1	-2.04	115.51	125.48

There are no chirality outliers.

There are no torsion outliers.

There are no ring outliers.

No monomer is involved in short contacts.

5.5 Carbohydrates [i](#)

There are no carbohydrates in this entry.

5.6 Ligand geometry [i](#)

Of 10 ligands modelled in this entry, 7 are monoatomic - leaving 3 for Mogul analysis.

In the following table, the Counts columns list the number of bonds (or angles) for which Mogul statistics could be retrieved, the number of bonds (or angles) that are observed in the model and the number of bonds (or angles) that are defined in the Chemical Component Dictionary. The Link column lists molecule types, if any, to which the group is linked. The Z score for a bond length (or angle) is the number of standard deviations the observed value is removed from the expected value. A bond length (or angle) with $|Z| > 2$ is considered an outlier worth inspection. RMSZ is the root-mean-square of all Z scores of the bond lengths (or angles).

Mol	Type	Chain	Res	Link	Bond lengths			Bond angles		
					Counts	RMSZ	# Z > 2	Counts	RMSZ	# Z > 2
5	ATP	B	400	3	26,33,33	2.15	9 (34%)	31,52,52	2.90	8 (25%)
4	TRS	A	472	-	7,7,7	1.13	1 (14%)	9,9,9	2.25	4 (44%)
5	ATP	E	400	3	26,33,33	1.96	8 (30%)	31,52,52	2.81	8 (25%)

In the following table, the Chirals column lists the number of chiral outliers, the number of chiral centers analysed, the number of these observed in the model and the number defined in the Chemical Component Dictionary. Similar counts are reported in the Torsion and Rings columns. '-' means no outliers of that kind were identified.

Mol	Type	Chain	Res	Link	Chirals	Torsions	Rings
5	ATP	B	400	3	-	1/18/38/38	0/3/3/3
4	TRS	A	472	-	-	6/9/9/9	-
5	ATP	E	400	3	-	1/18/38/38	0/3/3/3

The worst 5 of 18 bond length outliers are listed below:

Mol	Chain	Res	Type	Atoms	Z	Observed(Å)	Ideal(Å)
5	E	400	ATP	C4-N3	6.27	1.44	1.35
5	B	400	ATP	C4-N3	5.90	1.43	1.35
5	B	400	ATP	C8-N7	-3.94	1.27	1.34
5	B	400	ATP	O5'-C5'	-3.36	1.31	1.44
5	B	400	ATP	O4'-C1'	3.24	1.45	1.41

The worst 5 of 20 bond angle outliers are listed below:

Mol	Chain	Res	Type	Atoms	Z	Observed(°)	Ideal(°)
5	B	400	ATP	O5'-C5'-C4'	11.11	147.21	108.99
5	E	400	ATP	O5'-C5'-C4'	10.70	145.81	108.99
5	B	400	ATP	O5'-PA-O1A	-6.69	82.95	109.07
5	E	400	ATP	O5'-PA-O1A	-6.49	83.72	109.07
5	E	400	ATP	PA-O5'-C5'	5.32	152.85	121.68

There are no chirality outliers.

5 of 8 torsion outliers are listed below:

Mol	Chain	Res	Type	Atoms
4	A	472	TRS	C2-C-C1-O1
4	A	472	TRS	C3-C-C1-O1
4	A	472	TRS	N-C-C1-O1
4	A	472	TRS	C1-C-C3-O3
4	A	472	TRS	C2-C-C3-O3

There are no ring outliers.

2 monomers are involved in 2 short contacts:

Mol	Chain	Res	Type	Clashes	Symm-Clashes
5	B	400	ATP	1	0
4	A	472	TRS	1	0

5.7 Other polymers [i](#)

There are no such residues in this entry.

5.8 Polymer linkage issues [i](#)

There are no chain breaks in this entry.

6 Fit of model and data [i](#)

6.1 Protein, DNA and RNA chains [i](#)

In the following table, the column labelled '#RSRZ > 2' contains the number (and percentage) of RSRZ outliers, followed by percent RSRZ outliers for the chain as percentile scores relative to all X-ray entries and entries of similar resolution. The OWAB column contains the minimum, median, 95th percentile and maximum values of the occupancy-weighted average B-factor per residue. The column labelled 'Q < 0.9' lists the number of (and percentage) of residues with an average occupancy less than 0.9.

Mol	Chain	Analysed	<RSRZ>	#RSRZ > 2	OWAB(Å ²)	Q < 0.9
1	A	124/125 (99%)	0.04	4 (3%) 47 45	19, 37, 52, 60	0
1	D	123/125 (98%)	-0.08	4 (3%) 46 44	21, 34, 52, 60	0
2	B	360/377 (95%)	-0.08	14 (3%) 39 37	15, 32, 59, 60	0
2	E	361/377 (95%)	0.09	26 (7%) 15 14	14, 30, 60, 60	0
All	All	968/1004 (96%)	-0.00	48 (4%) 28 27	14, 32, 60, 60	0

The worst 5 of 48 RSRZ outliers are listed below:

Mol	Chain	Res	Type	RSRZ
1	A	2	VAL	10.5
2	E	44	GLY	8.3
1	A	3	VAL	8.1
2	E	65	GLY	7.0
2	E	204	THR	6.2

6.2 Non-standard residues in protein, DNA, RNA chains [i](#)

In the following table, the Atoms column lists the number of modelled atoms in the group and the number defined in the chemical component dictionary. The B-factors column lists the minimum, median, 95th percentile and maximum values of B factors of atoms in the group. The column labelled 'Q < 0.9' lists the number of atoms with occupancy less than 0.9.

Mol	Type	Chain	Res	Atoms	RSCC	RSR	B-factors(Å ²)	Q < 0.9
2	HIC	B	75	11/12	0.95	0.10	22,31,47,48	0
2	HIC	E	75	11/12	0.96	0.11	24,31,42,45	0

6.3 Carbohydrates [i](#)

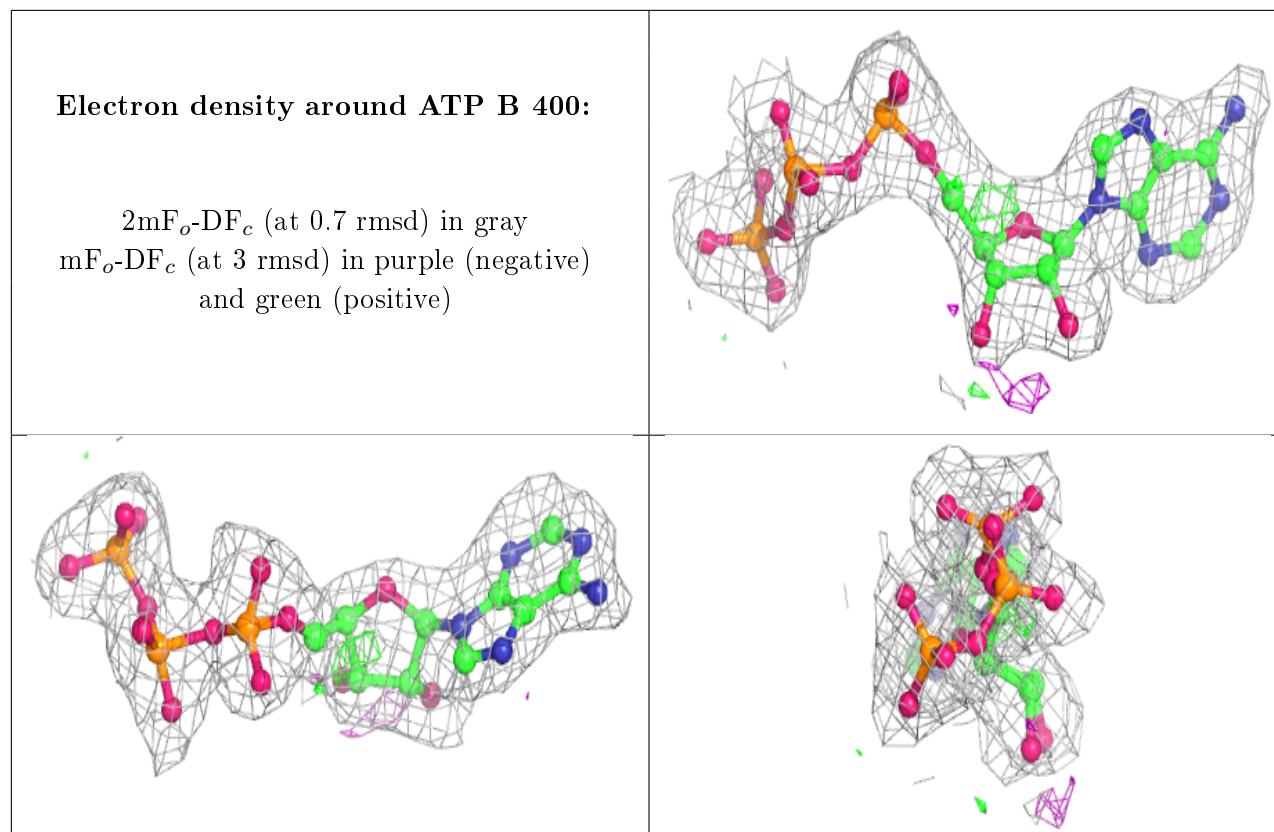
There are no carbohydrates in this entry.

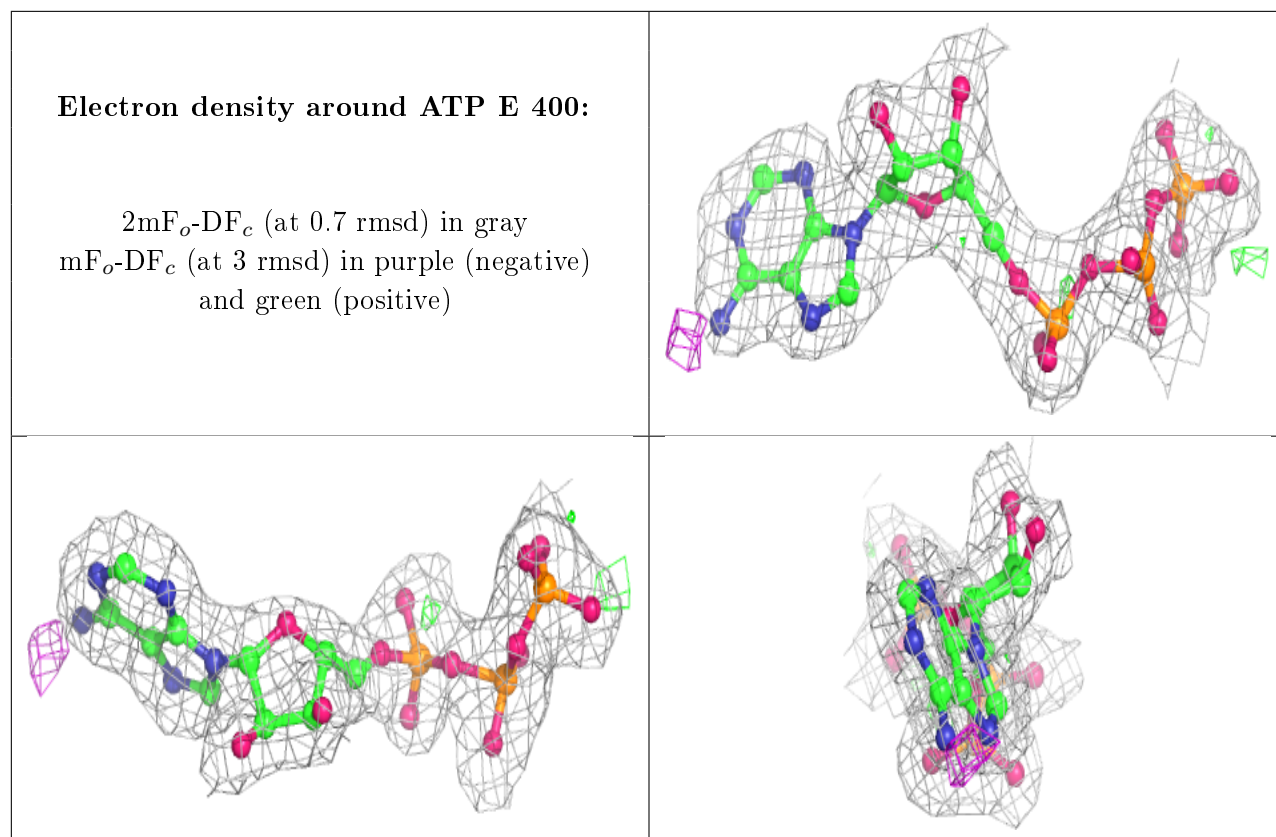
6.4 Ligands [i](#)

In the following table, the Atoms column lists the number of modelled atoms in the group and the number defined in the chemical component dictionary. The B-factors column lists the minimum, median, 95th percentile and maximum values of B factors of atoms in the group. The column labelled 'Q< 0.9' lists the number of atoms with occupancy less than 0.9.

Mol	Type	Chain	Res	Atoms	RSCC	RSR	B-factors(Å ²)	Q<0.9
4	TRS	A	472	8/8	0.72	0.23	54,60,60,60	0
3	CA	B	404	1/1	0.96	0.11	50,50,50,50	0
5	ATP	B	400	31/31	0.97	0.10	17,24,30,34	0
3	CA	A	402	1/1	0.97	0.05	43,43,43,43	0
5	ATP	E	400	31/31	0.98	0.09	17,24,28,29	0
3	CA	B	401	1/1	0.98	0.10	29,29,29,29	0
3	CA	D	402	1/1	0.99	0.03	36,36,36,36	0
3	CA	D	403	1/1	0.99	0.04	24,24,24,24	0
3	CA	E	401	1/1	1.00	0.11	29,29,29,29	0
3	CA	A	403	1/1	1.00	0.05	25,25,25,25	0

The following is a graphical depiction of the model fit to experimental electron density of all instances of the Ligand of Interest. In addition, ligands with molecular weight > 250 and outliers as shown on the geometry validation Tables will also be included. Each fit is shown from different orientation to approximate a three-dimensional view.





6.5 Other polymers [i](#)

There are no such residues in this entry.