



# wwPDB X-ray Structure Validation Summary Report ⓘ

Aug 29, 2023 – 01:54 AM EDT

PDB ID : 3MDT  
Title : Voriconazole complex of Cytochrome P450 46A1  
Authors : Mast, N.; Charvet, C.; Pikuleva, I.; Stout, C.D.  
Deposited on : 2010-03-30  
Resolution : 2.30 Å(reported)

This is a wwPDB X-ray Structure Validation Summary Report for a publicly released PDB entry.

We welcome your comments at [validation@mail.wwpdb.org](mailto:validation@mail.wwpdb.org)

A user guide is available at

<https://www.wwpdb.org/validation/2017/XrayValidationReportHelp>

with specific help available everywhere you see the ⓘ symbol.

The types of validation reports are described at

<http://www.wwpdb.org/validation/2017/FAQs#types>.

---

The following versions of software and data (see [references ⓘ](#)) were used in the production of this report:

MolProbity : 4.02b-467  
Mogul : 1.8.5 (274361), CSD as541be (2020)  
Xtriage (Phenix) : 1.13  
EDS : 2.35  
buster-report : 1.1.7 (2018)  
Percentile statistics : 20191225.v01 (using entries in the PDB archive December 25th 2019)  
Refmac : 5.8.0158  
CCP4 : 7.0.044 (Gargrove)  
Ideal geometry (proteins) : Engh & Huber (2001)  
Ideal geometry (DNA, RNA) : Parkinson et al. (1996)  
Validation Pipeline (wwPDB-VP) : 2.35

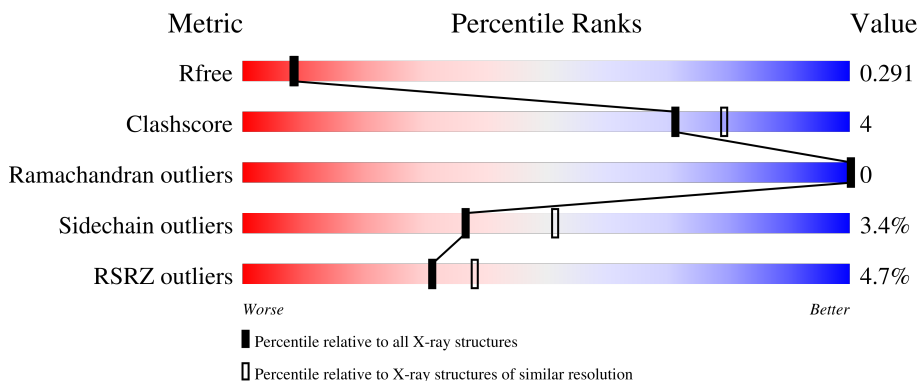
# 1 Overall quality at a glance

The following experimental techniques were used to determine the structure:

*X-RAY DIFFRACTION*

The reported resolution of this entry is 2.30 Å.

Percentile scores (ranging between 0-100) for global validation metrics of the entry are shown in the following graphic. The table shows the number of entries on which the scores are based.



Metric	Whole archive (#Entries)	Similar resolution (#Entries, resolution range(Å))
$R_{free}$	130704	5042 (2.30-2.30)
Clashscore	141614	5643 (2.30-2.30)
Ramachandran outliers	138981	5575 (2.30-2.30)
Sidechain outliers	138945	5575 (2.30-2.30)
RSRZ outliers	127900	4938 (2.30-2.30)

The table below summarises the geometric issues observed across the polymeric chains and their fit to the electron density. The red, orange, yellow and green segments of the lower bar indicate the fraction of residues that contain outliers for  $\geq 3$ , 2, 1 and 0 types of geometric quality criteria respectively. A grey segment represents the fraction of residues that are not modelled. The numeric value for each fraction is indicated below the corresponding segment, with a dot representing fractions  $\leq 5\%$ . The upper red bar (where present) indicates the fraction of residues that have poor fit to the electron density. The numeric value is given above the bar.

Mol	Chain	Length	Quality of chain
1	A	456	 3% 82% 10% • 7%
1	B	456	 5% 82% 10% • 7%

The following table lists non-polymeric compounds, carbohydrate monomers and non-standard residues in protein, DNA, RNA chains that are outliers for geometric or electron-density-fit criteria:

Mol	Type	Chain	Res	Chirality	Geometry	Clashes	Electron density
3	VOR	A	506	-	X	-	-
3	VOR	B	506	-	X	-	-

## 2 Entry composition

There are 4 unique types of molecules in this entry. The entry contains 7350 atoms, of which 0 are hydrogens and 0 are deuteriums.

In the tables below, the ZeroOcc column contains the number of atoms modelled with zero occupancy, the AltConf column contains the number of residues with at least one atom in alternate conformation and the Trace column contains the number of residues modelled with at most 2 atoms.

- Molecule 1 is a protein called Cholesterol 24-hydroxylase.

Mol	Chain	Residues	Atoms					ZeroOcc	AltConf	Trace
			Total	C	N	O	S			
1	A	424	3418	2181	598	622	17	0	0	0
1	B	424	3418	2181	598	622	17	0	0	0

There are 12 discrepancies between the modelled and reference sequences:

Chain	Residue	Modelled	Actual	Comment	Reference
A	49	MET	-	expression tag	UNP Q9Y6A2
A	50	ALA	-	expression tag	UNP Q9Y6A2
A	501	HIS	-	expression tag	UNP Q9Y6A2
A	502	HIS	-	expression tag	UNP Q9Y6A2
A	503	HIS	-	expression tag	UNP Q9Y6A2
A	504	HIS	-	expression tag	UNP Q9Y6A2
B	49	MET	-	expression tag	UNP Q9Y6A2
B	50	ALA	-	expression tag	UNP Q9Y6A2
B	501	HIS	-	expression tag	UNP Q9Y6A2
B	502	HIS	-	expression tag	UNP Q9Y6A2
B	503	HIS	-	expression tag	UNP Q9Y6A2
B	504	HIS	-	expression tag	UNP Q9Y6A2

- Molecule 2 is PROTOPORPHYRIN IX CONTAINING FE (three-letter code: HEM) (formula:  $C_{34}H_{32}FeN_4O_4$ ).



- Molecule 4 is water.

<b>Mol</b>	<b>Chain</b>	<b>Residues</b>	<b>Atoms</b>		<b>ZeroOcc</b>	<b>AltConf</b>
4	A	182	Total 182	O 182	0	0
4	B	196	Total 196	O 196	0	0



## 4 Data and refinement statistics

Property	Value	Source
Space group	I 41	Depositor
Cell constants a, b, c, $\alpha$ , $\beta$ , $\gamma$	121.60Å 121.60Å 143.83Å 90.00° 90.00° 90.00°	Depositor
Resolution (Å)	92.86 – 2.30 42.99 – 2.30	Depositor EDS
% Data completeness (in resolution range)	98.9 (92.86-2.30) 99.4 (42.99-2.30)	Depositor EDS
$R_{merge}$	0.07	Depositor
$R_{sym}$	0.07	Depositor
$\langle I/\sigma(I) \rangle$ <sup>1</sup>	2.47 (at 2.29Å)	Xtrriage
Refinement program	REFMAC 5.5.0072	Depositor
R, $R_{free}$	0.229 , 0.287 0.235 , 0.291	Depositor DCC
$R_{free}$ test set	2342 reflections (5.09%)	wwPDB-VP
Wilson B-factor (Å <sup>2</sup> )	37.0	Xtrriage
Anisotropy	0.013	Xtrriage
Bulk solvent $k_{sol}$ (e/Å <sup>3</sup> ), $B_{sol}$ (Å <sup>2</sup> )	0.34 , 39.6	EDS
L-test for twinning <sup>2</sup>	$\langle  L  \rangle = 0.54$ , $\langle L^2 \rangle = 0.38$	Xtrriage
Estimated twinning fraction	0.208 for -h,k,-l	Xtrriage
Reported twinning fraction	0.500 for H, K, L 0.500 for -H, K, -L	Depositor
Outliers	1 of 46043 reflections (0.002%)	Xtrriage
$F_o, F_c$ correlation	0.90	EDS
Total number of atoms	7350	wwPDB-VP
Average B, all atoms (Å <sup>2</sup> )	20.0	wwPDB-VP

Xtrriage's analysis on translational NCS is as follows: *The largest off-origin peak in the Patterson function is 3.52% of the height of the origin peak. No significant pseudotranslation is detected.*

<sup>1</sup>Intensities estimated from amplitudes.

<sup>2</sup>Theoretical values of  $\langle |L| \rangle$ ,  $\langle L^2 \rangle$  for acentric reflections are 0.5, 0.333 respectively for untwinned datasets, and 0.375, 0.2 for perfectly twinned datasets.



## 5 Model quality [i](#)

### 5.1 Standard geometry [i](#)

Bond lengths and bond angles in the following residue types are not validated in this section: HEM, VOR

The Z score for a bond length (or angle) is the number of standard deviations the observed value is removed from the expected value. A bond length (or angle) with  $|Z| > 5$  is considered an outlier worth inspection. RMSZ is the root-mean-square of all Z scores of the bond lengths (or angles).

Mol	Chain	Bond lengths		Bond angles	
		RMSZ	# Z  >5	RMSZ	# Z  >5
1	A	0.41	2/3485 (0.1%)	0.65	6/4700 (0.1%)
1	B	0.43	2/3485 (0.1%)	0.62	8/4700 (0.2%)
All	All	0.42	4/6970 (0.1%)	0.63	14/9400 (0.1%)

Chiral center outliers are detected by calculating the chiral volume of a chiral center and verifying if the center is modelled as a planar moiety or with the opposite hand. A planarity outlier is detected by checking planarity of atoms in a peptide group, atoms in a mainchain group or atoms of a sidechain that are expected to be planar.

Mol	Chain	#Chirality outliers	#Planarity outliers
1	A	0	1

All (4) bond length outliers are listed below:

Mol	Chain	Res	Type	Atoms	Z	Observed(Å)	Ideal(Å)
1	B	120	LEU	C-N	-5.97	1.20	1.34
1	A	120	LEU	C-N	-5.84	1.20	1.34
1	A	119	ARG	NE-CZ	-5.50	1.25	1.33
1	B	101	LYS	C-N	-5.13	1.22	1.34

The worst 5 of 14 bond angle outliers are listed below:

Mol	Chain	Res	Type	Atoms	Z	Observed(°)	Ideal(°)
1	A	119	ARG	CD-NE-CZ	20.15	151.81	123.60
1	A	119	ARG	NE-CZ-NH1	10.49	125.54	120.30
1	A	120	LEU	O-C-N	-9.48	107.53	122.70
1	A	119	ARG	O-C-N	-8.31	109.41	122.70
1	A	121	PHE	O-C-N	-7.78	109.98	123.20

There are no chirality outliers.

All (1) planarity outliers are listed below:

Mol	Chain	Res	Type	Group
1	A	121	PHE	Mainchain

## 5.2 Too-close contacts [i](#)

In the following table, the Non-H and H(model) columns list the number of non-hydrogen atoms and hydrogen atoms in the chain respectively. The H(added) column lists the number of hydrogen atoms added and optimized by MolProbity. The Clashes column lists the number of clashes within the asymmetric unit, whereas Symm-Clashes lists symmetry-related clashes.

Mol	Chain	Non-H	H(model)	H(added)	Clashes	Symm-Clashes
1	A	3418	0	3463	24	0
1	B	3418	0	3463	23	0
2	A	43	0	30	3	0
2	B	43	0	30	2	0
3	A	25	0	13	4	0
3	B	25	0	14	2	0
4	A	182	0	0	0	0
4	B	196	0	0	1	0
All	All	7350	0	7013	49	0

The all-atom clashscore is defined as the number of clashes found per 1000 atoms (including hydrogen atoms). The all-atom clashscore for this structure is 4.

The worst 5 of 49 close contacts within the same asymmetric unit are listed below, sorted by their clash magnitude.

Atom-1	Atom-2	Interatomic distance (Å)	Clash overlap (Å)
1:B:120:LEU:HD11	1:B:218:MET:HE2	1.34	1.06
1:A:421:PRO:HD3	1:B:406:GLU:HB2	1.70	0.74
1:B:475:THR:HG22	3:B:506:VOR:H14	1.77	0.67
1:A:64:PHE:CE1	1:A:77:VAL:HG11	2.33	0.63
1:A:120:LEU:HD21	1:A:218:MET:CE	2.28	0.63

There are no symmetry-related clashes.

## 5.3 Torsion angles [i](#)

### 5.3.1 Protein backbone [i](#)

In the following table, the Percentiles column shows the percent Ramachandran outliers of the chain as a percentile score with respect to all X-ray entries followed by that with respect to entries of similar resolution.

The Analysed column shows the number of residues for which the backbone conformation was analysed, and the total number of residues.

Mol	Chain	Analysed	Favoured	Allowed	Outliers	Percentiles	
1	A	420/456 (92%)	407 (97%)	13 (3%)	0	100	100
1	B	420/456 (92%)	408 (97%)	12 (3%)	0	100	100
All	All	840/912 (92%)	815 (97%)	25 (3%)	0	100	100

There are no Ramachandran outliers to report.

### 5.3.2 Protein sidechains [i](#)

In the following table, the Percentiles column shows the percent sidechain outliers of the chain as a percentile score with respect to all X-ray entries followed by that with respect to entries of similar resolution.

The Analysed column shows the number of residues for which the sidechain conformation was analysed, and the total number of residues.

Mol	Chain	Analysed	Rotameric	Outliers	Percentiles	
1	A	372/397 (94%)	357 (96%)	15 (4%)	31	44
1	B	372/397 (94%)	362 (97%)	10 (3%)	44	61
All	All	744/794 (94%)	719 (97%)	25 (3%)	37	51

5 of 25 residues with a non-rotameric sidechain are listed below:

Mol	Chain	Res	Type
1	A	473	GLN
1	B	126	VAL
1	B	403	THR
1	B	106	SER
1	B	213	GLN

Sometimes sidechains can be flipped to improve hydrogen bonding and reduce clashes. All (3) such sidechains are listed below:

Mol	Chain	Res	Type
1	A	135	HIS
1	A	434	HIS
1	B	81	HIS

### 5.3.3 RNA [i](#)

There are no RNA molecules in this entry.

### 5.4 Non-standard residues in protein, DNA, RNA chains [i](#)

There are no non-standard protein/DNA/RNA residues in this entry.

### 5.5 Carbohydrates [i](#)

There are no monosaccharides in this entry.

### 5.6 Ligand geometry [i](#)

4 ligands are modelled in this entry.

In the following table, the Counts columns list the number of bonds (or angles) for which Mogul statistics could be retrieved, the number of bonds (or angles) that are observed in the model and the number of bonds (or angles) that are defined in the Chemical Component Dictionary. The Link column lists molecule types, if any, to which the group is linked. The Z score for a bond length (or angle) is the number of standard deviations the observed value is removed from the expected value. A bond length (or angle) with  $|Z| > 2$  is considered an outlier worth inspection. RMSZ is the root-mean-square of all Z scores of the bond lengths (or angles).

Mol	Type	Chain	Res	Link	Bond lengths			Bond angles		
					Counts	RMSZ	# Z  > 2	Counts	RMSZ	# Z  > 2
2	HEM	B	505	3,1	41,50,50	2.97	19 (46%)	45,82,82	2.03	10 (22%)
3	VOR	B	506	2	24,27,27	2.91	16 (66%)	33,39,39	2.91	18 (54%)
2	HEM	A	505	3,1	41,50,50	2.96	20 (48%)	45,82,82	1.88	9 (20%)
3	VOR	A	506	2	24,27,27	3.24	14 (58%)	33,39,39	3.50	24 (72%)

In the following table, the Chirals column lists the number of chiral outliers, the number of chiral centers analysed, the number of these observed in the model and the number defined in the Chemical Component Dictionary. Similar counts are reported in the Torsion and Rings columns. '-' means no outliers of that kind were identified.

Mol	Type	Chain	Res	Link	Chirals	Torsions	Rings
2	HEM	B	505	3,1	-	6/12/54/54	-
3	VOR	B	506	2	-	12/21/21/21	0/3/3/3
2	HEM	A	505	3,1	-	2/12/54/54	-
3	VOR	A	506	2	-	13/21/21/21	0/3/3/3

The worst 5 of 69 bond length outliers are listed below:

Mol	Chain	Res	Type	Atoms	Z	Observed(Å)	Ideal(Å)
3	B	506	VOR	C21-N5	6.67	1.40	1.33
2	A	505	HEM	C3B-C2B	6.31	1.50	1.37
3	A	506	VOR	C21-N5	6.14	1.39	1.33
2	B	505	HEM	C3C-C2C	6.08	1.48	1.40
2	A	505	HEM	C3C-C2C	6.07	1.48	1.40

The worst 5 of 61 bond angle outliers are listed below:

Mol	Chain	Res	Type	Atoms	Z	Observed(°)	Ideal(°)
3	A	506	VOR	F1-C16-C13	8.70	129.45	118.98
3	A	506	VOR	C14-C11-C15	7.75	119.17	108.59
3	B	506	VOR	N9-C24-N6	-7.22	119.76	127.70
2	B	505	HEM	C1B-NB-C4B	6.88	112.18	105.07
3	A	506	VOR	N9-C24-N6	-6.85	120.17	127.70

There are no chirality outliers.

5 of 33 torsion outliers are listed below:

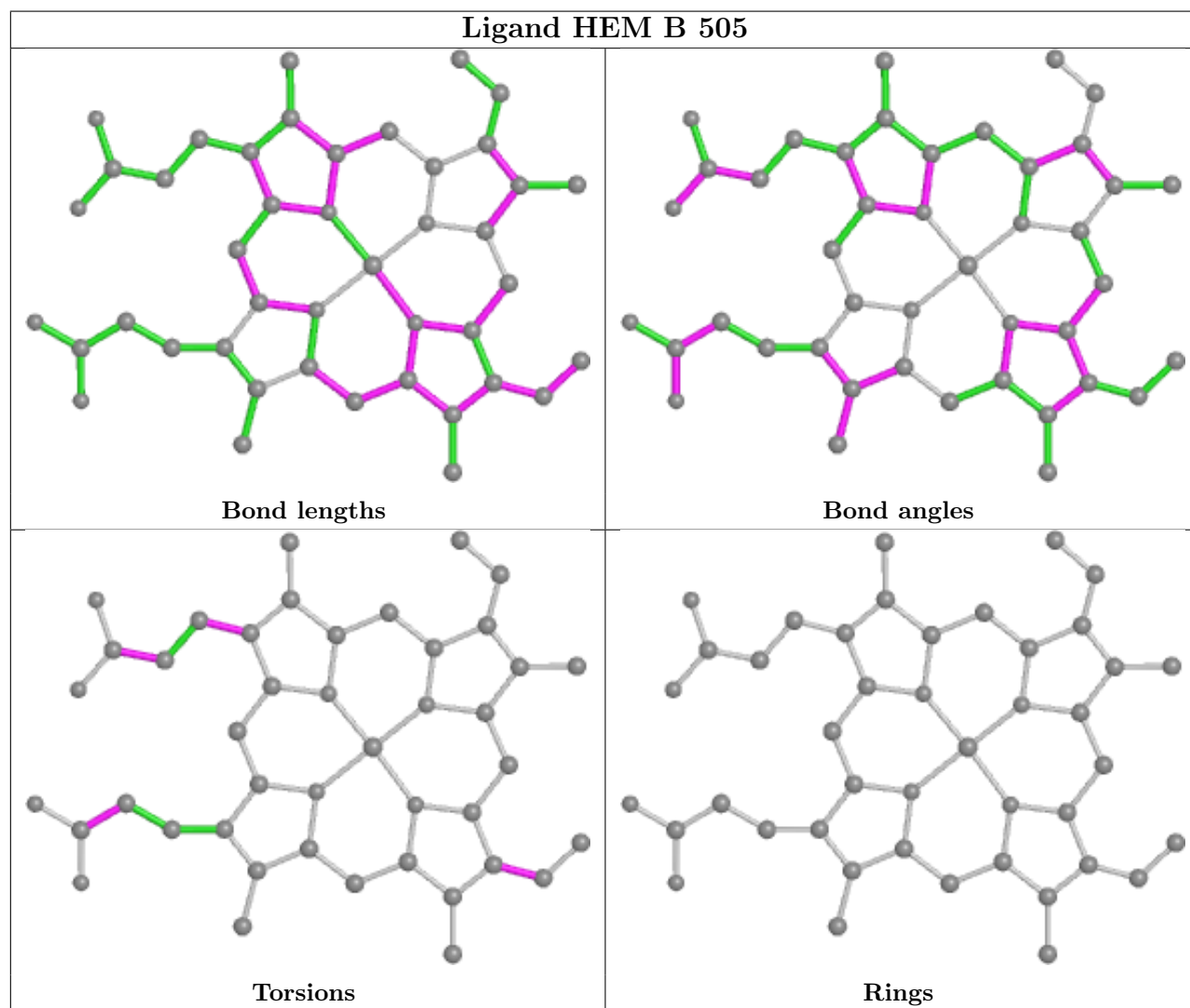
Mol	Chain	Res	Type	Atoms
2	B	505	HEM	C2B-C3B-CAB-CBB
3	A	506	VOR	C10-C12-N5-C21
3	A	506	VOR	C13-C10-C11-C15
3	A	506	VOR	O4-C10-C12-N5
3	A	506	VOR	C11-C10-C12-N5

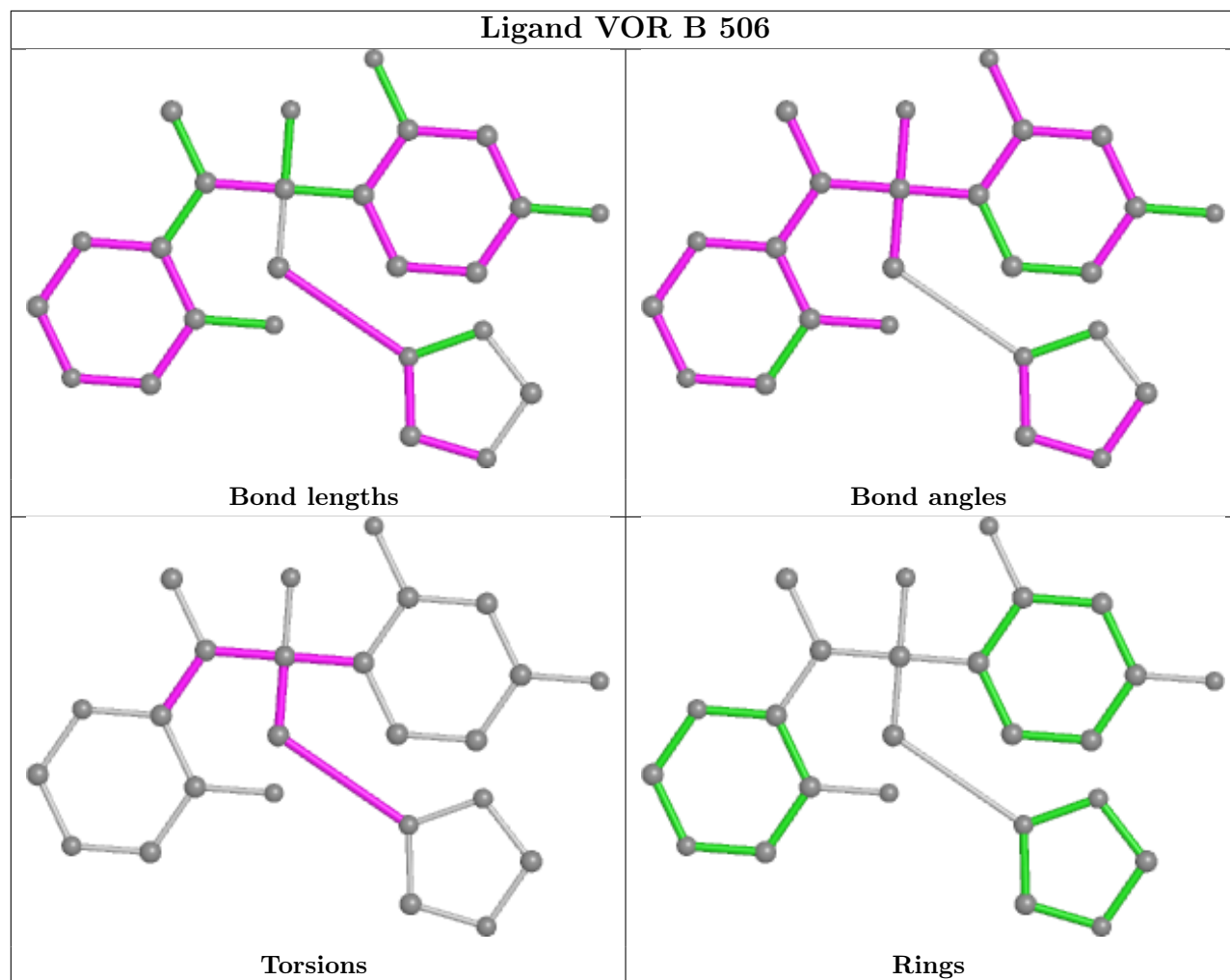
There are no ring outliers.

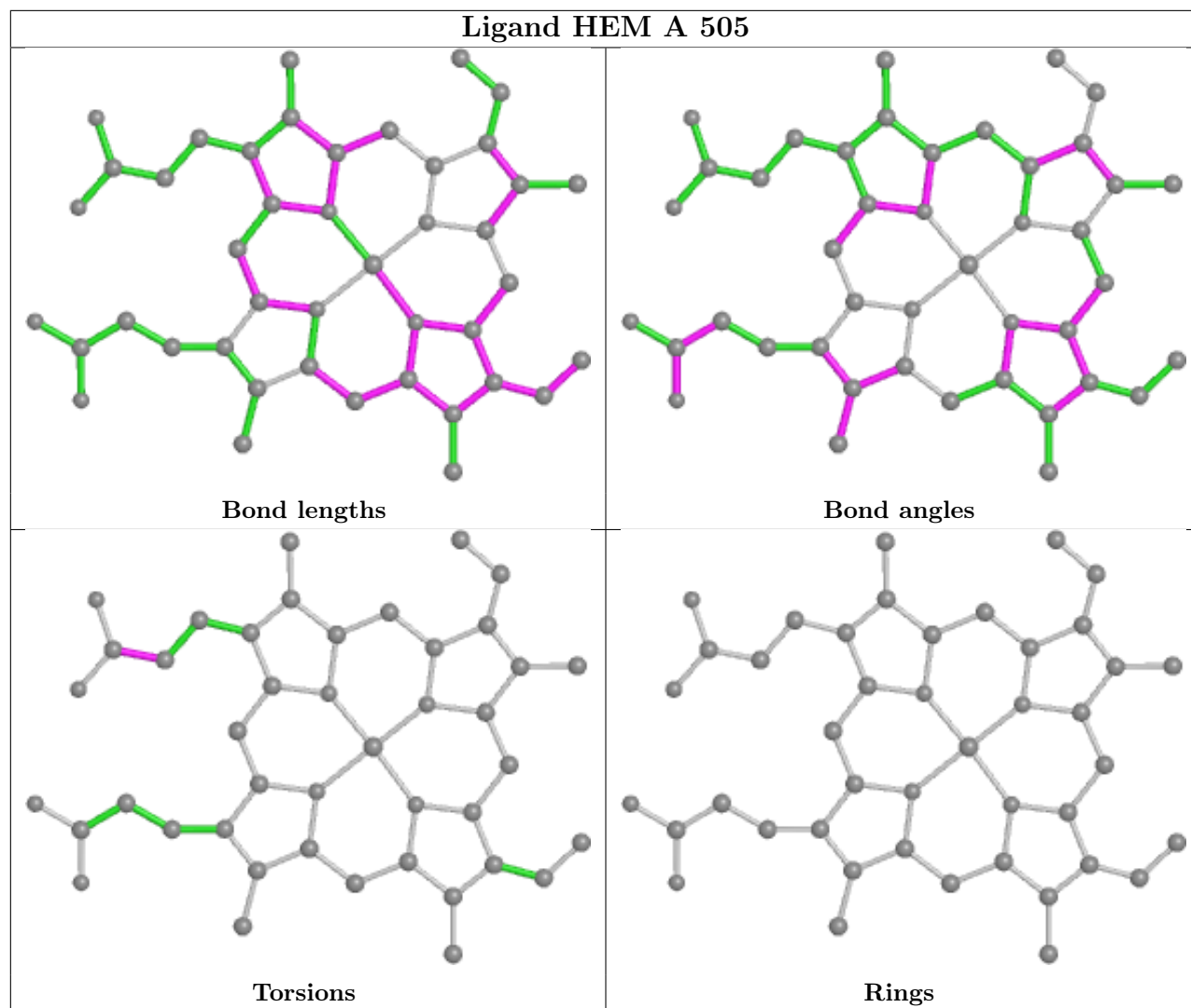
4 monomers are involved in 9 short contacts:

Mol	Chain	Res	Type	Clashes	Symm-Clashes
2	B	505	HEM	2	0
3	B	506	VOR	2	0
2	A	505	HEM	3	0
3	A	506	VOR	4	0

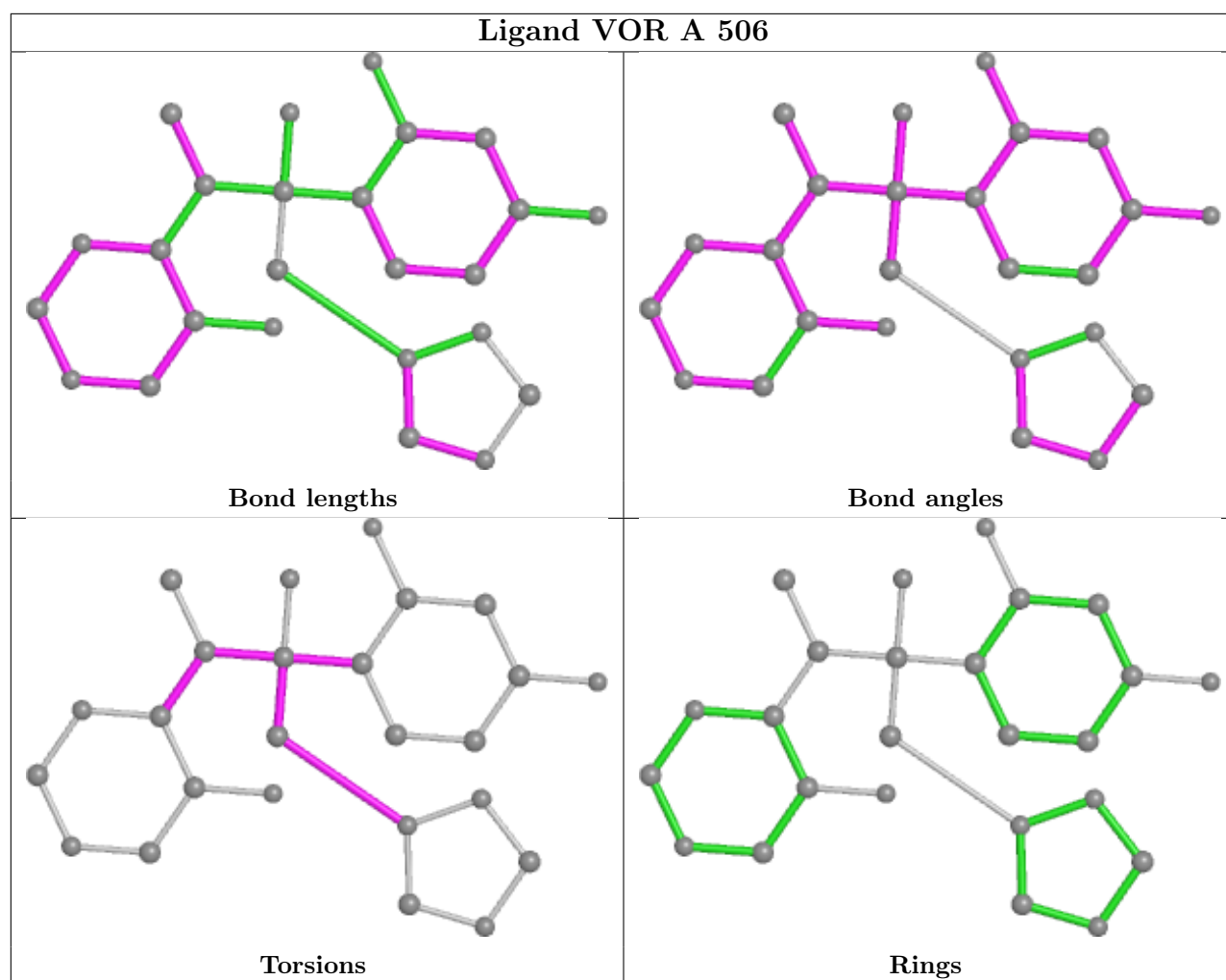
The following is a two-dimensional graphical depiction of Mogul quality analysis of bond lengths, bond angles, torsion angles, and ring geometry for all instances of the Ligand of Interest. In addition, ligands with molecular weight > 250 and outliers as shown on the validation Tables will also be included. For torsion angles, if less than 5% of the Mogul distribution of torsion angles is within 10 degrees of the torsion angle in question, then that torsion angle is considered an outlier. Any bond that is central to one or more torsion angles identified as an outlier by Mogul will be highlighted in the graph. For rings, the root-mean-square deviation (RMSD) between the ring in question and similar rings identified by Mogul is calculated over all ring torsion angles. If the average RMSD is greater than 60 degrees and the minimal RMSD between the ring in question and any Mogul-identified rings is also greater than 60 degrees, then that ring is considered an outlier. The outliers are highlighted in purple. The color gray indicates Mogul did not find sufficient equivalents in the CSD to analyse the geometry.











## 5.7 Other polymers [i](#)

There are no such residues in this entry.

## 5.8 Polymer linkage issues [i](#)

The following chains have linkage breaks:

Mol	Chain	Number of breaks
1	B	1

All chain breaks are listed below:

Model	Chain	Residue-1	Atom-1	Residue-2	Atom-2	Distance (Å)
1	B	120:LEU	C	121:PHE	N	1.20

## 6 Fit of model and data [i](#)

### 6.1 Protein, DNA and RNA chains [i](#)

In the following table, the column labelled ‘#RSRZ> 2’ contains the number (and percentage) of RSRZ outliers, followed by percent RSRZ outliers for the chain as percentile scores relative to all X-ray entries and entries of similar resolution. The OWAB column contains the minimum, median, 95<sup>th</sup> percentile and maximum values of the occupancy-weighted average B-factor per residue. The column labelled ‘Q< 0.9’ lists the number of (and percentage) of residues with an average occupancy less than 0.9.

Mol	Chain	Analysed	<RSRZ>	#RSRZ>2	OWAB(Å <sup>2</sup> )	Q<0.9
1	A	424/456 (92%)	0.49	15 (3%) 44 51	9, 20, 29, 35	0
1	B	424/456 (92%)	0.54	25 (5%) 22 28	8, 21, 33, 37	0
All	All	848/912 (92%)	0.51	40 (4%) 31 38	8, 20, 32, 37	0

The worst 5 of 40 RSRZ outliers are listed below:

Mol	Chain	Res	Type	RSRZ
1	B	463	VAL	3.5
1	B	266	LYS	3.2
1	A	224	ALA	3.2
1	B	335	VAL	3.1
1	A	237	ARG	3.0

### 6.2 Non-standard residues in protein, DNA, RNA chains [i](#)

There are no non-standard protein/DNA/RNA residues in this entry.

### 6.3 Carbohydrates [i](#)

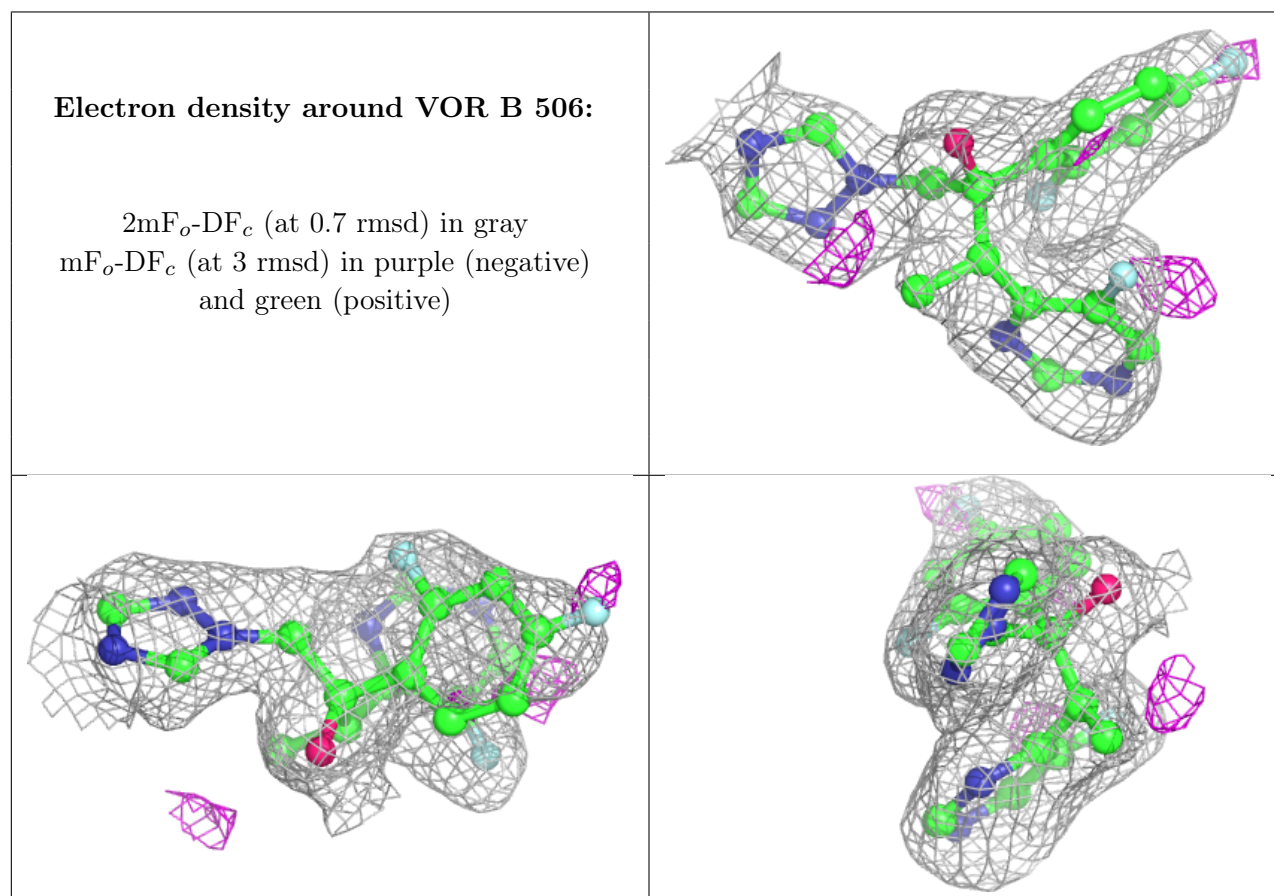
There are no monosaccharides in this entry.

### 6.4 Ligands [i](#)

In the following table, the Atoms column lists the number of modelled atoms in the group and the number defined in the chemical component dictionary. The B-factors column lists the minimum, median, 95<sup>th</sup> percentile and maximum values of B factors of atoms in the group. The column labelled ‘Q< 0.9’ lists the number of atoms with occupancy less than 0.9.

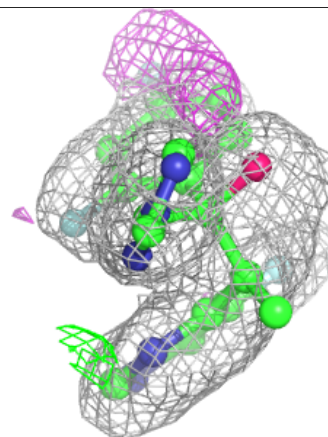
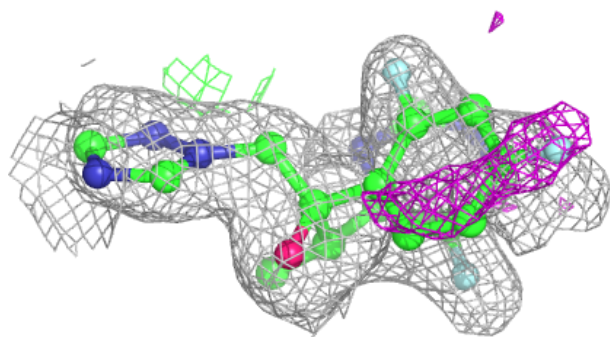
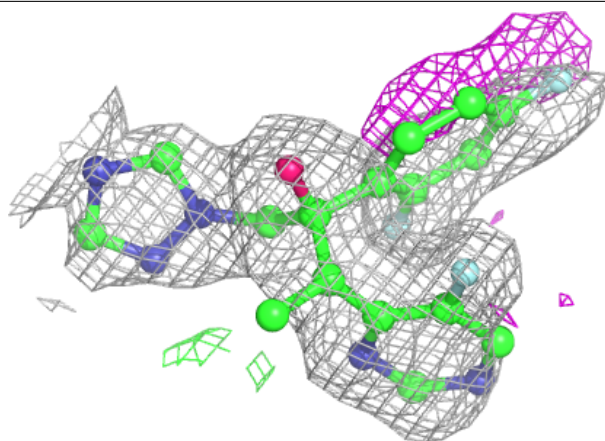
Mol	Type	Chain	Res	Atoms	RSCC	RSR	B-factors( $\text{\AA}^2$ )	Q<0.9
3	VOR	B	506	25/25	0.83	0.27	40,44,45,46	0
3	VOR	A	506	25/25	0.84	0.27	40,44,45,46	0
2	HEM	B	505	43/43	0.95	0.18	18,20,24,27	0
2	HEM	A	505	43/43	0.96	0.17	12,17,23,25	0

The following is a graphical depiction of the model fit to experimental electron density of all instances of the Ligand of Interest. In addition, ligands with molecular weight > 250 and outliers as shown on the geometry validation Tables will also be included. Each fit is shown from different orientation to approximate a three-dimensional view.



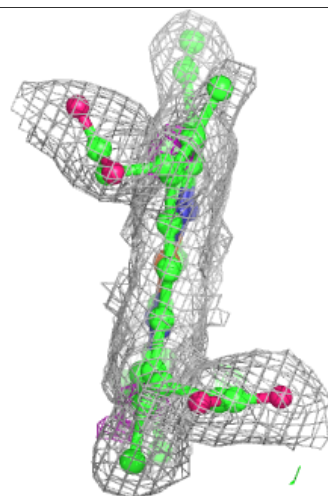
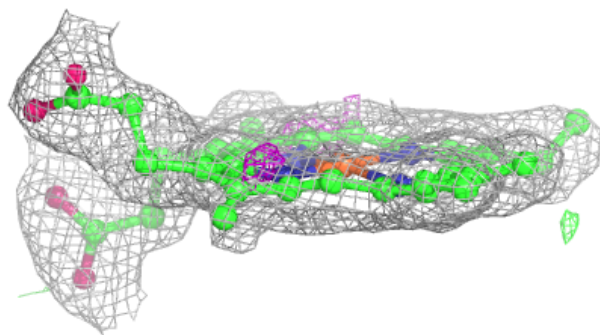
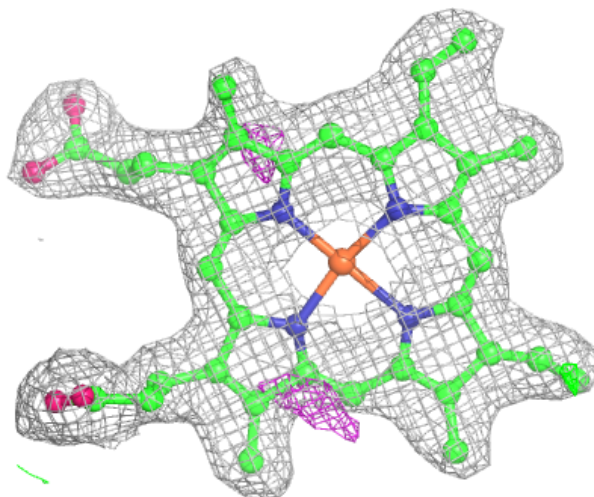
**Electron density around VOR A 506:**

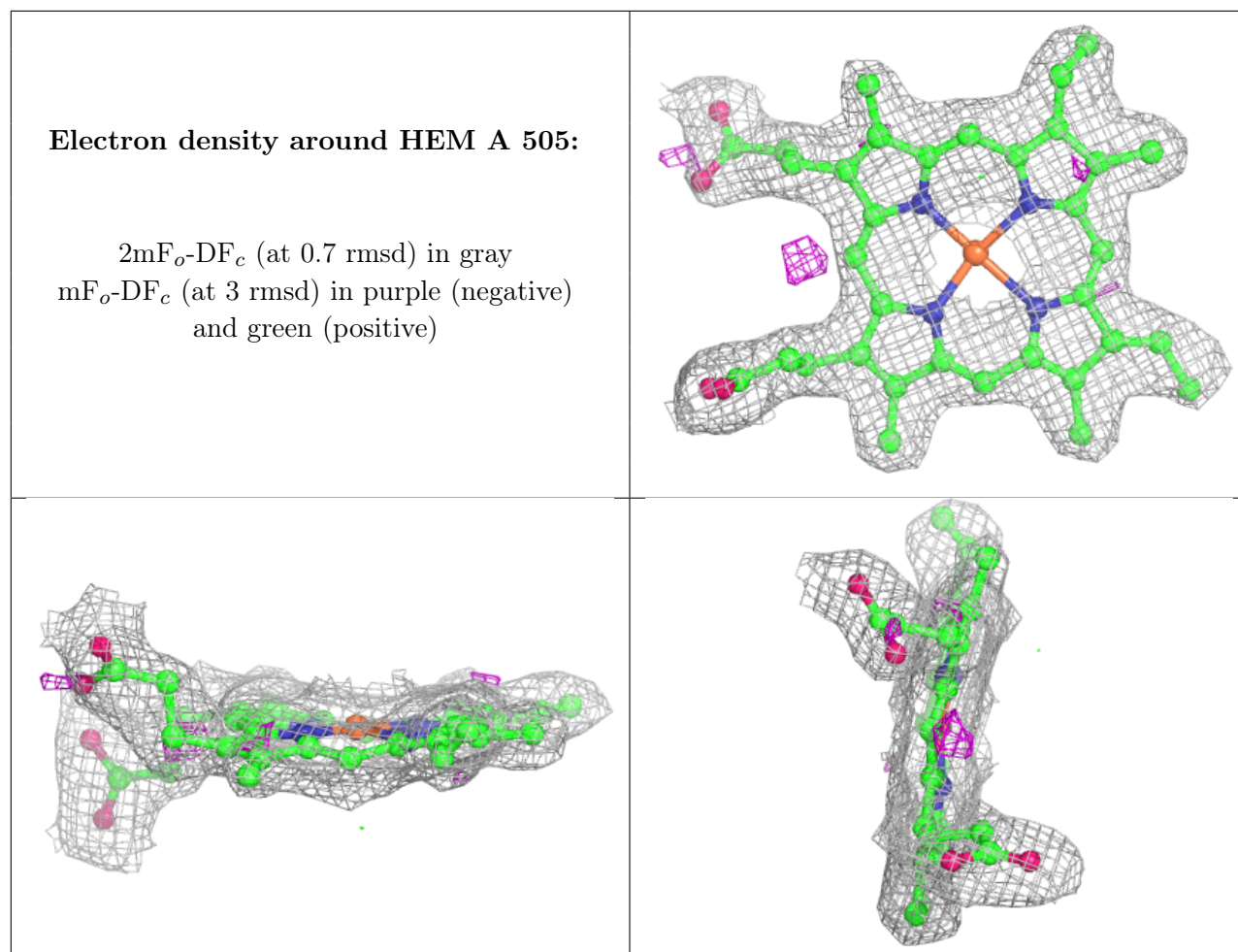
$2mF_o-DF_c$  (at 0.7 rmsd) in gray  
 $mF_o-DF_c$  (at 3 rmsd) in purple (negative)  
and green (positive)



**Electron density around HEM B 505:**

$2mF_o-DF_c$  (at 0.7 rmsd) in gray  
 $mF_o-DF_c$  (at 3 rmsd) in purple (negative)  
and green (positive)





## 6.5 Other polymers [i](#)

There are no such residues in this entry.