



Full wwPDB X-ray Structure Validation Report ⓘ

May 25, 2020 – 11:09 pm BST

PDB ID : 1MFP
Title : E. coli Enoyl Reductase in complex with NAD and SB611113
Authors : Seefeld, M.A.; Miller, W.H.; Newlander, K.A.; Burgess, W.J.; DeWolf Jr., W.E.; Elkins, P.A.; Head, M.S.; Jakas, D.R.; Janson, C.A.; Keller, P.M.; Manley, P.J.; Moore, T.D.; Payne, D.J.; Pearson, S.; Polizzi, B.J.; Qiu, X.; Rittenhouse, S.F.; Uzinskas, I.N.; Wallis, N.G.; Huffman, W.F.
Deposited on : 2002-08-13
Resolution : 2.33 Å(reported)

This is a Full wwPDB X-ray Structure Validation Report for a publicly released PDB entry.

We welcome your comments at validation@mail.wwpdb.org

A user guide is available at

<https://www.wwpdb.org/validation/2017/XrayValidationReportHelp>

with specific help available everywhere you see the ⓘ symbol.

The following versions of software and data (see [references ⓘ](#)) were used in the production of this report:

MolProbity : 4.02b-467
Mogul : 1.8.5 (274361), CSD as541be (2020)
Xtriage (Phenix) : 1.13
EDS : 2.11
buster-report : 1.1.7 (2018)
Percentile statistics : 20191225.v01 (using entries in the PDB archive December 25th 2019)
Refmac : 5.8.0158
CCP4 : 7.0.044 (Gargrove)
Ideal geometry (proteins) : Engh & Huber (2001)
Ideal geometry (DNA, RNA) : Parkinson et al. (1996)
Validation Pipeline (wwPDB-VP) : 2.11

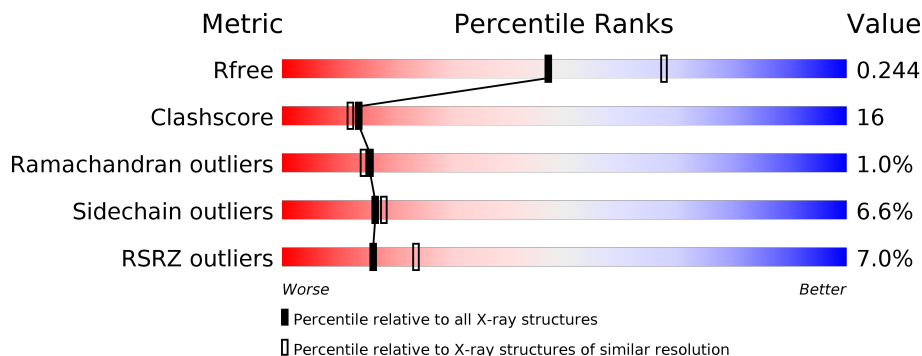
1 Overall quality at a glance

The following experimental techniques were used to determine the structure:

X-RAY DIFFRACTION

The reported resolution of this entry is 2.33 Å.

Percentile scores (ranging between 0-100) for global validation metrics of the entry are shown in the following graphic. The table shows the number of entries on which the scores are based.



Metric	Whole archive (#Entries)	Similar resolution (#Entries, resolution range(Å))
R_{free}	130704	2096 (2.36-2.32)
Clashscore	141614	2193 (2.36-2.32)
Ramachandran outliers	138981	2159 (2.36-2.32)
Sidechain outliers	138945	2160 (2.36-2.32)
RSRZ outliers	127900	2067 (2.36-2.32)

The table below summarises the geometric issues observed across the polymeric chains and their fit to the electron density. The red, orange, yellow and green segments on the lower bar indicate the fraction of residues that contain outliers for ≥ 3 , 2, 1 and 0 types of geometric quality criteria respectively. A grey segment represents the fraction of residues that are not modelled. The numeric value for each fraction is indicated below the corresponding segment, with a dot representing fractions $\leq 5\%$. The upper red bar (where present) indicates the fraction of residues that have poor fit to the electron density. The numeric value is given above the bar.

Mol	Chain	Length	Quality of chain
1	A	262	<p>9% 68% 27%</p>
1	B	262	<p>5% 71% 23%</p>

2 Entry composition i

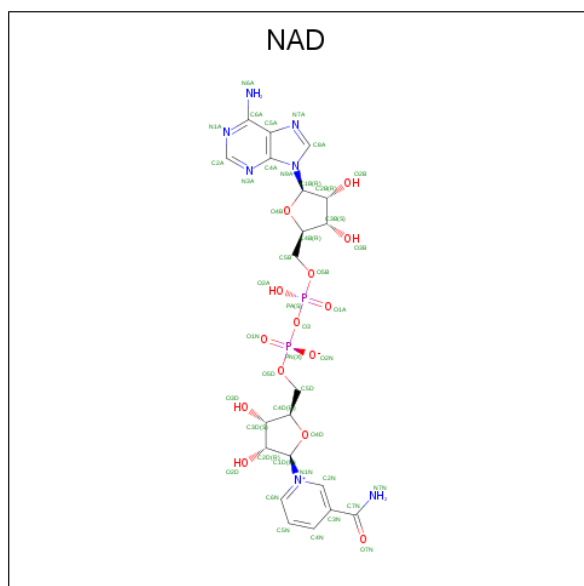
There are 5 unique types of molecules in this entry. The entry contains 4180 atoms, of which 0 are hydrogens and 0 are deuteriums.

In the tables below, the ZeroOcc column contains the number of atoms modelled with zero occupancy, the AltConf column contains the number of residues with at least one atom in alternate conformation and the Trace column contains the number of residues modelled with at most 2 atoms.

- Molecule 1 is a protein called enoyl-[acyl-carrier-protein] reductase [Nadh].

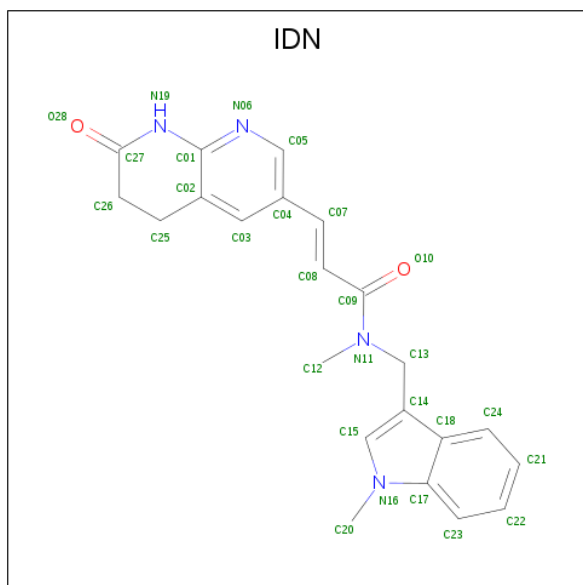
Mol	Chain	Residues	Atoms					ZeroOcc	AltConf	Trace
			Total	C	N	O	S			
1	A	258	Total 1918	1209	331	365	13	0	0	0
1	B	258	Total 1918	1209	331	365	13	0	0	0

- Molecule 2 is NICOTINAMIDE-ADENINE-DINUCLEOTIDE (three-letter code: NAD) (formula: C₂₁H₂₇N₇O₁₄P₂).



Mol	Chain	Residues	Atoms					ZeroOcc	AltConf
			Total	C	N	O	P		
2	A	1	Total 44	21	7	14	2	0	0
2	B	1	Total 44	21	7	14	2	0	0

- Molecule 3 is (E)-N-METHYL-N-(1-METHYL-1H-INDOL-3-YLMETHYL)-3-(7-OXO-5,6,7,8-TETRAHYDRO-[1,8]NAPHTHYRIDIN-3-YL)-ACRYLAMIDE (three-letter code: IDN) (formula: C₂₂H₂₂N₄O₂).



Mol	Chain	Residues	Atoms				ZeroOcc	AltConf
			Total	C	N	O		
3	A	1	28	22	4	2	0	0
3	B	1	28	22	4	2	0	0

- Molecule 4 is SULFATE ION (three-letter code: SO4) (formula: O₄S).



Mol	Chain	Residues	Atoms			ZeroOcc	AltConf
			Total	O	S		
4	B	1	5	4	1	0	0

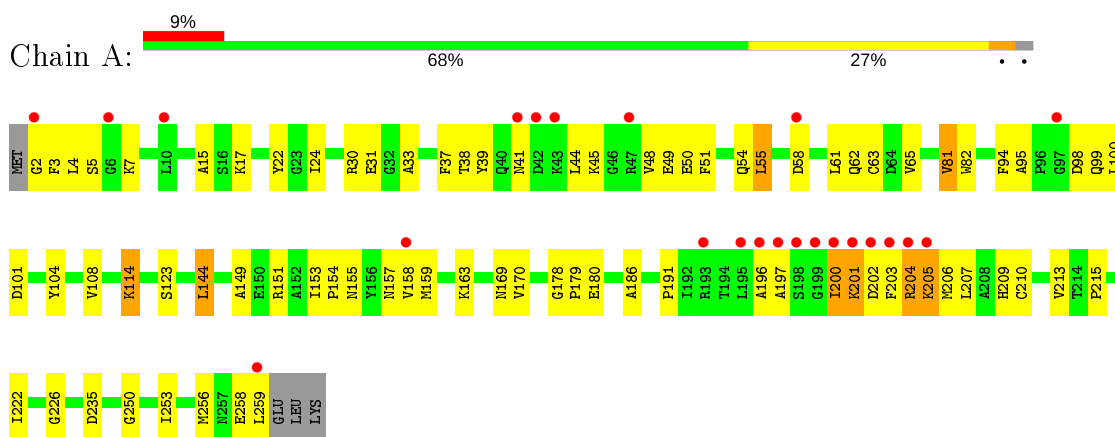
- Molecule 5 is water.

Mol	Chain	Residues	Atoms		ZeroOcc	AltConf
5	A	86	Total 86	O 86	0	0
5	B	109	Total 109	O 109	0	0

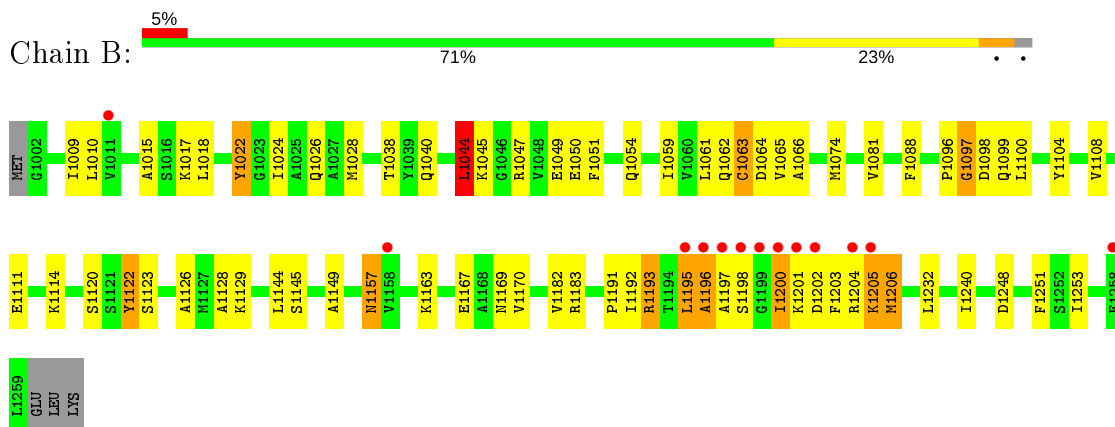
3 Residue-property plots [i](#)

These plots are drawn for all protein, RNA and DNA chains in the entry. The first graphic for a chain summarises the proportions of the various outlier classes displayed in the second graphic. The second graphic shows the sequence view annotated by issues in geometry and electron density. Residues are color-coded according to the number of geometric quality criteria for which they contain at least one outlier: green = 0, yellow = 1, orange = 2 and red = 3 or more. A red dot above a residue indicates a poor fit to the electron density ($RSRZ > 2$). Stretches of 2 or more consecutive residues without any outlier are shown as a green connector. Residues present in the sample, but not in the model, are shown in grey.

- Molecule 1: enoyl-[acyl-carrier-protein] reductase [Nadh]



- Molecule 1: enoyl-[acyl-carrier-protein] reductase [Nadh]



4 Data and refinement statistics

Property	Value	Source
Space group	P 61 2 2	Depositor
Cell constants a, b, c, α , β , γ	79.60Å 79.60Å 325.48Å 90.00° 90.00° 120.00°	Depositor
Resolution (Å)	20.00 – 2.33 19.90 – 2.33	Depositor EDS
% Data completeness (in resolution range)	(Not available) (20.00-2.33) 69.1 (19.90-2.33)	Depositor EDS
R_{merge}	0.04	Depositor
R_{sym}	(Not available)	Depositor
$\langle I/\sigma(I) \rangle$ ¹	5.86 (at 2.33Å)	Xtrriage
Refinement program	CNS	Depositor
R, R_{free}	0.198 , 0.259 0.185 , 0.244	Depositor DCC
R_{free} test set	933 reflections (4.86%)	wwPDB-VP
Wilson B-factor (Å ²)	28.5	Xtrriage
Anisotropy	0.069	Xtrriage
Bulk solvent k_{sol} (e/Å ³), B_{sol} (Å ²)	0.43 , 57.1	EDS
L-test for twinning ²	$\langle L \rangle = 0.49$, $\langle L^2 \rangle = 0.32$	Xtrriage
Estimated twinning fraction	No twinning to report.	Xtrriage
F_o, F_c correlation	0.93	EDS
Total number of atoms	4180	wwPDB-VP
Average B, all atoms (Å ²)	31.0	wwPDB-VP

Xtrriage's analysis on translational NCS is as follows: *The largest off-origin peak in the Patterson function is 3.89% of the height of the origin peak. No significant pseudotranslation is detected.*

¹Intensities estimated from amplitudes.

²Theoretical values of $\langle |L| \rangle$, $\langle L^2 \rangle$ for acentric reflections are 0.5, 0.333 respectively for untwinned datasets, and 0.375, 0.2 for perfectly twinned datasets.

5 Model quality [i](#)

5.1 Standard geometry [i](#)

Bond lengths and bond angles in the following residue types are not validated in this section: IDN, SO4, NAD

The Z score for a bond length (or angle) is the number of standard deviations the observed value is removed from the expected value. A bond length (or angle) with $|Z| > 5$ is considered an outlier worth inspection. RMSZ is the root-mean-square of all Z scores of the bond lengths (or angles).

Mol	Chain	Bond lengths		Bond angles	
		RMSZ	# $ Z > 5$	RMSZ	# $ Z > 5$
1	A	0.88	0/1950	0.93	2/2634 (0.1%)
1	B	0.93	1/1950 (0.1%)	0.93	2/2634 (0.1%)
All	All	0.91	1/3900 (0.0%)	0.93	4/5268 (0.1%)

Chiral center outliers are detected by calculating the chiral volume of a chiral center and verifying if the center is modelled as a planar moiety or with the opposite hand. A planarity outlier is detected by checking planarity of atoms in a peptide group, atoms in a mainchain group or atoms of a sidechain that are expected to be planar.

Mol	Chain	#Chirality outliers	#Planarity outliers
1	B	0	2

All (1) bond length outliers are listed below:

Mol	Chain	Res	Type	Atoms	Z	Observed(Å)	Ideal(Å)
1	B	1063	CYS	CB-SG	5.17	1.91	1.82

All (4) bond angle outliers are listed below:

Mol	Chain	Res	Type	Atoms	Z	Observed(°)	Ideal(°)
1	A	144	LEU	CA-CB-CG	-6.28	100.86	115.30
1	A	55	LEU	CA-CB-CG	-5.17	103.41	115.30
1	B	1195	LEU	CA-CB-CG	5.11	127.05	115.30
1	B	1044	LEU	CA-CB-CG	5.09	127.00	115.30

There are no chirality outliers.

All (2) planarity outliers are listed below:

Mol	Chain	Res	Type	Group
1	B	1022	TYR	Sidechain
1	B	1122	TYR	Sidechain

5.2 Too-close contacts [i](#)

In the following table, the Non-H and H(model) columns list the number of non-hydrogen atoms and hydrogen atoms in the chain respectively. The H(added) column lists the number of hydrogen atoms added and optimized by MolProbity. The Clashes column lists the number of clashes within the asymmetric unit, whereas Symm-Clashes lists symmetry related clashes.

Mol	Chain	Non-H	H(model)	H(added)	Clashes	Symm-Clashes
1	A	1918	0	1909	68	0
1	B	1918	0	1909	60	0
2	A	44	0	26	2	0
2	B	44	0	26	3	0
3	A	28	0	22	6	0
3	B	28	0	22	5	0
4	B	5	0	0	0	0
5	A	86	0	0	4	0
5	B	109	0	0	3	0
All	All	4180	0	3914	126	0

The all-atom clashscore is defined as the number of clashes found per 1000 atoms (including hydrogen atoms). The all-atom clashscore for this structure is 16.

All (126) close contacts within the same asymmetric unit are listed below, sorted by their clash magnitude.

Atom-1	Atom-2	Interatomic distance (Å)	Clash overlap (Å)
1:B:1074:MET:SD	1:B:1074:MET:CE	2.04	1.45
1:B:1099:GLN:HE22	1:B:1108:VAL:HA	1.42	0.84
1:B:1191:PRO:HG3	1:B:1206:MET:HE2	1.60	0.83
1:A:202:ASP:OD2	1:A:204:ARG:HG2	1.82	0.80
1:B:1038:THR:HA	1:B:1061:LEU:O	1.83	0.79
1:A:99:GLN:HE22	1:A:108:VAL:HA	1.54	0.73
1:A:256:MET:HB3	1:A:259:LEU:HD13	1.71	0.71
1:B:1191:PRO:HG3	1:B:1206:MET:CE	2.20	0.70
1:A:197:ALA:HB1	1:A:203:PHE:CE2	2.27	0.70
1:A:17:LYS:HA	1:A:22:TYR:CD1	2.27	0.69
1:A:259:LEU:HD12	1:A:259:LEU:H	1.56	0.69
1:B:1192:ILE:HA	5:B:138:HOH:O	1.95	0.66
1:B:1024:ILE:O	1:B:1028:MET:HG3	1.95	0.65

Continued on next page...

Continued from previous page...

Atom-1	Atom-2	Interatomic distance (Å)	Clash overlap (Å)
1:A:196:ALA:O	3:A:302:IDN:H251	1.96	0.64
1:A:155:ASN:HD22	1:A:201:LYS:HD3	1.63	0.64
1:B:1099:GLN:NE2	1:B:1108:VAL:HA	2.13	0.62
1:B:1050:GLU:OE2	1:B:1054:GLN:NE2	2.33	0.62
1:A:202:ASP:OD2	1:A:204:ARG:CG	2.48	0.61
1:A:108:VAL:O	1:B:1129:LYS:CE	2.48	0.61
1:A:180:GLU:OE1	5:A:382:HOH:O	2.16	0.61
1:A:205:LYS:HA	1:A:205:LYS:HE2	1.81	0.61
1:A:209:HIS:O	1:A:213:VAL:HG22	2.01	0.61
1:B:1206:MET:HE1	3:B:1302:IDN:H21	1.82	0.60
1:B:1017:LYS:HE2	1:B:1022:TYR:OH	2.02	0.59
1:B:1197:ALA:O	1:B:1200:ILE:HG12	2.02	0.59
1:B:1200:ILE:HD11	3:B:1302:IDN:H15	1.85	0.59
1:A:38:THR:HA	1:A:61:LEU:O	2.03	0.58
1:A:81:VAL:O	1:A:82:TRP:HD1	1.86	0.58
1:B:1205:LYS:HA	1:B:1205:LYS:NZ	2.19	0.58
1:B:1047:ARG:NH1	1:B:1051:PHE:CZ	2.72	0.58
1:B:1047:ARG:HE	1:B:1047:ARG:HA	1.68	0.57
1:A:108:VAL:O	1:B:1129:LYS:HE2	2.04	0.56
1:A:114:LYS:HD2	1:A:114:LYS:C	2.26	0.56
1:A:222:ILE:HG23	5:A:365:HOH:O	2.06	0.56
1:A:81:VAL:HG22	1:A:82:TRP:CD1	2.42	0.55
1:B:1045:LYS:O	1:B:1049:GLU:HG3	2.06	0.55
1:A:104:TYR:HD1	1:A:157:ASN:HB3	1.71	0.54
1:A:65:VAL:HG22	2:A:301:NAD:N1A	2.22	0.54
1:B:1047:ARG:CZ	1:B:1051:PHE:CZ	2.91	0.54
1:B:1064:ASP:OD1	1:B:1066:ALA:HB3	2.08	0.53
1:B:1182:VAL:HG12	1:B:1183:ARG:O	2.09	0.53
1:A:250:GLY:O	1:A:253:ILE:HG13	2.09	0.53
1:B:1104:TYR:HD1	1:B:1157:ASN:HB3	1.74	0.53
1:B:1044:LEU:HD23	5:B:181:HOH:O	2.08	0.52
1:B:1193:ARG:O	1:B:1193:ARG:HG3	2.09	0.52
1:B:1063:CYS:HB2	1:B:1074:MET:HG3	1.92	0.52
1:A:50:GLU:O	1:A:54:GLN:HG3	2.10	0.51
1:B:1010:LEU:HB3	1:B:1088:PHE:HB3	1.92	0.51
1:B:1065:VAL:HB	1:B:1123:SER:HB2	1.93	0.51
1:A:201:LYS:HG3	1:A:202:ASP:N	2.26	0.50
1:B:1017:LYS:HG2	1:B:1022:TYR:CZ	2.46	0.50
1:A:204:ARG:HG2	1:A:205:LYS:H	1.76	0.50
1:B:1010:LEU:HD11	1:B:1038:THR:HG23	1.92	0.50
1:A:149:ALA:HB2	1:A:163:LYS:HB3	1.93	0.50

Continued on next page...

Continued from previous page...

Atom-1	Atom-2	Interatomic distance (Å)	Clash overlap (Å)
1:B:1047:ARG:HE	1:B:1047:ARG:CA	2.25	0.50
1:B:1253:ILE:HD12	1:B:1253:ILE:C	2.31	0.50
1:B:1099:GLN:C	1:B:1100:LEU:HD23	2.32	0.49
1:A:24:ILE:HG12	1:A:226:GLY:HA2	1.93	0.49
2:B:1301:NAD:C4N	3:B:1302:IDN:H122	2.43	0.49
1:A:178:GLY:N	1:A:179:PRO:CD	2.75	0.49
1:A:170:VAL:HG21	1:A:186:ALA:HB2	1.93	0.49
1:B:1196:ALA:O	3:B:1302:IDN:H03	2.12	0.49
1:B:1201:LYS:HG3	1:B:1202:ASP:N	2.28	0.49
1:B:1015:ALA:HB2	2:B:1301:NAD:O3B	2.13	0.49
1:B:1022:TYR:OH	1:B:1026:GLN:NE2	2.46	0.48
1:A:258:GLU:HG2	1:A:259:LEU:HD12	1.95	0.48
1:B:1183:ARG:HD2	1:B:1240:ILE:O	2.13	0.48
1:B:1248:ASP:OD2	1:B:1251:PHE:HB3	2.14	0.48
1:A:3:PHE:CZ	1:A:31:GLU:HG3	2.49	0.48
1:A:37:PHE:CD1	1:A:37:PHE:N	2.81	0.48
1:B:1167:GLU:O	1:B:1170:VAL:HB	2.13	0.48
1:A:200:ILE:HB	3:A:302:IDN:H203	1.96	0.48
1:A:155:ASN:HD22	1:A:201:LYS:CD	2.26	0.47
1:B:1128:ALA:O	1:B:1129:LYS:C	2.53	0.47
1:A:200:ILE:HG21	3:A:302:IDN:H203	1.96	0.47
1:A:99:GLN:NE2	1:A:108:VAL:HA	2.26	0.47
1:A:159:MET:CE	1:A:163:LYS:HE2	2.45	0.46
1:A:30:ARG:NE	1:A:31:GLU:OE2	2.46	0.46
1:A:191:PRO:HG2	1:A:210:CYS:SG	2.56	0.46
1:A:62:GLN:NE2	1:A:63:CYS:N	2.64	0.45
1:B:1009:ILE:HD13	1:B:1028:MET:CE	2.47	0.45
1:A:158:VAL:O	1:A:158:VAL:HG22	2.17	0.45
1:A:197:ALA:O	1:A:200:ILE:HD11	2.17	0.45
1:A:44:LEU:O	1:A:48:VAL:HG23	2.16	0.45
1:A:4:LEU:HB3	1:A:33:ALA:HB2	1.99	0.45
1:A:7:LYS:NZ	5:A:312:HOH:O	2.32	0.45
1:B:1017:LYS:HG2	1:B:1022:TYR:CE2	2.52	0.44
1:B:1047:ARG:HA	1:B:1047:ARG:NE	2.31	0.44
1:A:65:VAL:HB	1:A:123:SER:HB2	2.00	0.44
1:B:1200:ILE:CD1	3:B:1302:IDN:H15	2.48	0.44
1:B:1114:LYS:HD3	1:B:1114:LYS:C	2.38	0.44
1:A:48:VAL:HA	1:A:51:PHE:CD1	2.52	0.44
1:B:1145:SER:HA	1:B:1163:LYS:HD2	2.00	0.43
1:B:1059:ILE:HD11	1:B:1081:VAL:HG11	1.99	0.43
1:A:200:ILE:CB	3:A:302:IDN:H203	2.48	0.43

Continued on next page...

Continued from previous page...

Atom-1	Atom-2	Interatomic distance (Å)	Clash overlap (Å)
1:A:108:VAL:O	1:B:1129:LYS:HE3	2.17	0.43
1:A:55:LEU:HA	1:A:55:LEU:HD23	1.68	0.43
1:B:1196:ALA:HB2	2:B:1301:NAD:O1A	2.18	0.43
1:B:1122:TYR:CE2	1:B:1126:ALA:HB2	2.54	0.42
1:A:200:ILE:CG2	3:A:302:IDN:H203	2.49	0.42
1:A:94:PHE:HA	3:A:302:IDN:N06	2.34	0.42
1:B:1232:LEU:HD23	1:B:1232:LEU:HA	1.82	0.42
1:B:1059:ILE:CD1	1:B:1081:VAL:HG11	2.49	0.42
1:B:1047:ARG:HH21	1:B:1050:GLU:HB3	1.85	0.42
1:A:153:ILE:HA	1:A:154:PRO:HD3	1.95	0.42
1:A:235:ASP:OD2	5:A:345:HOH:O	2.21	0.42
1:A:2:GLY:N	1:A:5:SER:HG	2.17	0.42
1:A:94:PHE:CG	1:A:95:ALA:N	2.88	0.42
1:A:15:ALA:HB2	2:A:301:NAD:O3B	2.20	0.41
1:B:1205:LYS:HA	1:B:1205:LYS:HZ3	1.84	0.41
1:A:259:LEU:CD1	1:A:259:LEU:H	2.29	0.41
1:A:39:TYR:HD2	1:A:41:ASN:O	2.02	0.41
1:A:205:LYS:HA	1:A:205:LYS:CE	2.49	0.41
1:B:1096:PRO:O	1:B:1097:GLY:C	2.59	0.41
1:A:30:ARG:NH2	1:A:31:GLU:OE2	2.50	0.41
1:B:1098:ASP:N	1:B:1098:ASP:OD1	2.53	0.41
1:A:203:PHE:O	1:A:206:MET:HB3	2.21	0.41
1:B:1149:ALA:HB2	1:B:1163:LYS:HB3	2.02	0.41
1:A:207:LEU:HD12	1:A:207:LEU:HA	1.78	0.41
1:A:44:LEU:HD12	1:A:44:LEU:N	2.36	0.41
1:A:45:LYS:O	1:A:49:GLU:HG3	2.21	0.41
1:B:1197:ALA:HB1	1:B:1203:PHE:CE2	2.56	0.41
1:A:256:MET:CB	1:A:259:LEU:HD13	2.46	0.40
1:A:258:GLU:O	1:A:259:LEU:C	2.60	0.40
1:A:259:LEU:HD12	1:A:259:LEU:N	2.32	0.40
1:B:1040:GLN:NE2	5:B:165:HOH:O	2.55	0.40

There are no symmetry-related clashes.

5.3 Torsion angles [i](#)

5.3.1 Protein backbone [i](#)

In the following table, the Percentiles column shows the percent Ramachandran outliers of the chain as a percentile score with respect to all X-ray entries followed by that with respect to entries of similar resolution.

The Analysed column shows the number of residues for which the backbone conformation was analysed, and the total number of residues.

Mol	Chain	Analysed	Favoured	Allowed	Outliers	Percentiles	
1	A	256/262 (98%)	240 (94%)	15 (6%)	1 (0%)	34	38
1	B	256/262 (98%)	236 (92%)	16 (6%)	4 (2%)	9	7
All	All	512/524 (98%)	476 (93%)	31 (6%)	5 (1%)	15	14

All (5) Ramachandran outliers are listed below:

Mol	Chain	Res	Type
1	B	1196	ALA
1	B	1198	SER
1	A	201	LYS
1	B	1157	ASN
1	B	1097	GLY

5.3.2 Protein sidechains [i](#)

In the following table, the Percentiles column shows the percent sidechain outliers of the chain as a percentile score with respect to all X-ray entries followed by that with respect to entries of similar resolution.

The Analysed column shows the number of residues for which the sidechain conformation was analysed, and the total number of residues.

Mol	Chain	Analysed	Rotameric	Outliers	Percentiles	
1	A	197/201 (98%)	184 (93%)	13 (7%)	16	18
1	B	197/201 (98%)	184 (93%)	13 (7%)	16	18
All	All	394/402 (98%)	368 (93%)	26 (7%)	16	18

All (26) residues with a non-rotameric sidechain are listed below:

Mol	Chain	Res	Type
1	A	58	ASP
1	A	81	VAL
1	A	98	ASP
1	A	100	LEU
1	A	101	ASP
1	A	114	LYS
1	A	144	LEU
1	A	151	ARG

Continued on next page...

Continued from previous page...

Mol	Chain	Res	Type
1	A	169	ASN
1	A	200	ILE
1	A	204	ARG
1	A	205	LYS
1	A	215	PRO
1	B	1018	LEU
1	B	1044	LEU
1	B	1062	GLN
1	B	1111	GLU
1	B	1120	SER
1	B	1144	LEU
1	B	1169	ASN
1	B	1193	ARG
1	B	1195	LEU
1	B	1200	ILE
1	B	1204	ARG
1	B	1205	LYS
1	B	1206	MET

Some sidechains can be flipped to improve hydrogen bonding and reduce clashes. All (12) such sidechains are listed below:

Mol	Chain	Res	Type
1	A	26	GLN
1	A	62	GLN
1	A	99	GLN
1	A	169	ASN
1	A	175	ASN
1	A	257	ASN
1	B	1026	GLN
1	B	1040	GLN
1	B	1062	GLN
1	B	1099	GLN
1	B	1169	ASN
1	B	1257	ASN

5.3.3 RNA

There are no RNA molecules in this entry.

5.4 Non-standard residues in protein, DNA, RNA chains [i](#)

There are no non-standard protein/DNA/RNA residues in this entry.

5.5 Carbohydrates [i](#)

There are no carbohydrates in this entry.

5.6 Ligand geometry [i](#)

5 ligands are modelled in this entry.

In the following table, the Counts columns list the number of bonds (or angles) for which Mogul statistics could be retrieved, the number of bonds (or angles) that are observed in the model and the number of bonds (or angles) that are defined in the Chemical Component Dictionary. The Link column lists molecule types, if any, to which the group is linked. The Z score for a bond length (or angle) is the number of standard deviations the observed value is removed from the expected value. A bond length (or angle) with $|Z| > 2$ is considered an outlier worth inspection. RMSZ is the root-mean-square of all Z scores of the bond lengths (or angles).

Mol	Type	Chain	Res	Link	Bond lengths			Bond angles		
					Counts	RMSZ	# Z > 2	Counts	RMSZ	# Z > 2
4	SO4	B	1303	-	4,4,4	0.38	0	6,6,6	0.20	0
3	IDN	A	302	-	27,31,31	2.88	15 (55%)	35,44,44	1.62	6 (17%)
3	IDN	B	1302	-	27,31,31	2.57	13 (48%)	35,44,44	1.77	6 (17%)
2	NAD	B	1301	-	42,48,48	1.85	8 (19%)	50,73,73	1.36	5 (10%)
2	NAD	A	301	-	42,48,48	1.97	12 (28%)	50,73,73	1.36	4 (8%)

In the following table, the Chirals column lists the number of chiral outliers, the number of chiral centers analysed, the number of these observed in the model and the number defined in the Chemical Component Dictionary. Similar counts are reported in the Torsion and Rings columns. '-' means no outliers of that kind were identified.

Mol	Type	Chain	Res	Link	Chirals	Torsions	Rings
3	IDN	A	302	-	-	4/12/22/22	0/4/4/4
3	IDN	B	1302	-	-	4/12/22/22	0/4/4/4
2	NAD	B	1301	-	-	9/26/62/62	0/5/5/5
2	NAD	A	301	-	-	8/26/62/62	0/5/5/5

All (48) bond length outliers are listed below:

Mol	Chain	Res	Type	Atoms	Z	Observed(Å)	Ideal(Å)
2	A	301	NAD	C2N-N1N	7.29	1.43	1.35
2	B	1301	NAD	C2N-N1N	6.54	1.42	1.35
3	B	1302	IDN	C02-C01	6.15	1.47	1.41
3	A	302	IDN	C09-N11	6.05	1.43	1.35
3	A	302	IDN	C02-C01	5.98	1.47	1.41
3	B	1302	IDN	C09-N11	5.26	1.42	1.35
2	B	1301	NAD	O4D-C1D	4.75	1.47	1.41
3	A	302	IDN	C27-N19	4.40	1.40	1.35
2	A	301	NAD	O4D-C1D	4.29	1.47	1.41
3	A	302	IDN	C05-C04	4.06	1.46	1.39
3	A	302	IDN	C22-C23	4.00	1.45	1.36
3	B	1302	IDN	C22-C23	3.99	1.45	1.36
3	A	302	IDN	C21-C24	3.93	1.45	1.36
2	B	1301	NAD	C2N-C3N	3.93	1.45	1.39
3	B	1302	IDN	C26-C27	3.45	1.58	1.50
2	A	301	NAD	C2A-N3A	3.43	1.37	1.32
3	B	1302	IDN	C21-C24	3.36	1.44	1.36
3	A	302	IDN	C26-C27	3.35	1.57	1.50
3	B	1302	IDN	C03-C02	3.33	1.45	1.39
3	A	302	IDN	C03-C02	3.28	1.45	1.39
3	A	302	IDN	C05-N06	3.24	1.41	1.34
2	A	301	NAD	C3N-C7N	3.19	1.55	1.50
3	B	1302	IDN	C05-C04	3.15	1.44	1.39
2	B	1301	NAD	C2A-N3A	2.99	1.36	1.32
3	B	1302	IDN	C03-C04	2.96	1.44	1.39
2	A	301	NAD	C6N-N1N	2.92	1.42	1.35
3	B	1302	IDN	C27-N19	2.88	1.38	1.35
3	A	302	IDN	C01-N06	2.86	1.39	1.35
3	A	302	IDN	C03-C04	2.80	1.44	1.39
3	B	1302	IDN	C22-C21	2.72	1.45	1.38
2	B	1301	NAD	C4N-C3N	2.71	1.43	1.39
3	A	302	IDN	C22-C21	2.71	1.45	1.38
2	A	301	NAD	C2A-N1A	2.68	1.38	1.33
3	A	302	IDN	C08-C09	2.64	1.52	1.48
3	B	1302	IDN	C05-N06	2.61	1.39	1.34
2	A	301	NAD	C4A-N3A	2.59	1.39	1.35
3	A	302	IDN	C08-C07	2.56	1.39	1.33
2	A	301	NAD	C4N-C3N	2.54	1.43	1.39
2	B	1301	NAD	C6N-N1N	2.44	1.41	1.35
2	A	301	NAD	C5N-C4N	2.41	1.44	1.38
2	A	301	NAD	C5A-N7A	-2.38	1.31	1.39
2	A	301	NAD	O4B-C1B	2.36	1.44	1.41
3	A	302	IDN	C25-C26	2.33	1.57	1.52

Continued on next page...

Continued from previous page...

Mol	Chain	Res	Type	Atoms	Z	Observed(Å)	Ideal(Å)
2	B	1301	NAD	C3N-C7N	2.32	1.54	1.50
3	B	1302	IDN	C25-C26	2.31	1.57	1.52
2	B	1301	NAD	C5A-N7A	-2.26	1.31	1.39
2	A	301	NAD	C2D-C1D	-2.20	1.50	1.53
3	B	1302	IDN	C01-N06	2.09	1.38	1.35

All (21) bond angle outliers are listed below:

Mol	Chain	Res	Type	Atoms	Z	Observed(°)	Ideal(°)
3	B	1302	IDN	C08-C09-N11	6.37	122.78	118.00
3	A	302	IDN	C08-C09-N11	5.55	122.17	118.00
2	A	301	NAD	N3A-C2A-N1A	-4.89	121.03	128.68
2	B	1301	NAD	N3A-C2A-N1A	-4.31	121.94	128.68
3	B	1302	IDN	O10-C09-C08	-4.13	113.46	122.06
2	B	1301	NAD	C4A-C5A-N7A	3.98	113.55	109.40
3	A	302	IDN	O10-C09-C08	-3.96	113.82	122.06
2	A	301	NAD	C4A-C5A-N7A	3.71	113.27	109.40
2	B	1301	NAD	C1B-N9A-C4A	-3.16	121.10	126.64
2	A	301	NAD	C1B-N9A-C4A	-2.97	121.43	126.64
3	A	302	IDN	C14-C13-N11	-2.74	110.26	114.48
3	B	1302	IDN	C23-C17-N16	2.72	134.47	132.14
3	B	1302	IDN	C14-C13-N11	-2.70	110.33	114.48
3	B	1302	IDN	C13-N11-C09	2.68	126.64	119.96
2	A	301	NAD	N6A-C6A-N1A	2.55	123.86	118.57
3	A	302	IDN	C13-N11-C09	2.48	126.13	119.96
3	A	302	IDN	C23-C17-N16	2.28	134.10	132.14
3	A	302	IDN	C01-N19-C27	2.10	126.28	124.24
2	B	1301	NAD	O4B-C1B-C2B	-2.09	103.87	106.93
2	B	1301	NAD	N6A-C6A-N1A	2.06	122.86	118.57
3	B	1302	IDN	C01-N19-C27	2.01	126.19	124.24

There are no chirality outliers.

All (25) torsion outliers are listed below:

Mol	Chain	Res	Type	Atoms
3	A	302	IDN	C05-C04-C07-C08
2	B	1301	NAD	C5D-O5D-PN-O1N
2	B	1301	NAD	C5D-O5D-PN-O2N
2	B	1301	NAD	O4D-C1D-N1N-C2N
2	A	301	NAD	PN-O3-PA-O5B
2	A	301	NAD	O4B-C4B-C5B-O5B
2	A	301	NAD	C5D-O5D-PN-O1N

Continued on next page...

Continued from previous page...

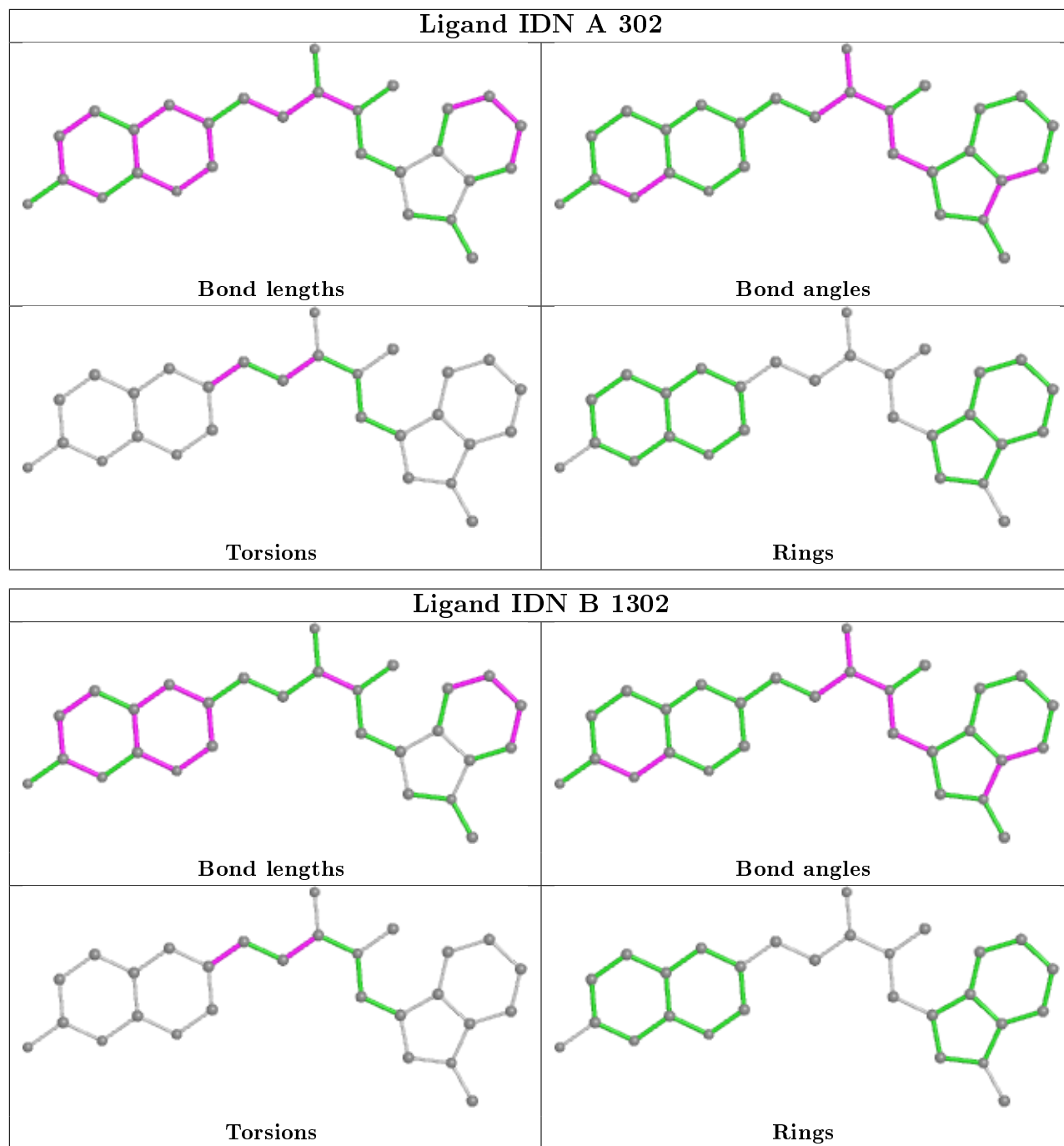
Mol	Chain	Res	Type	Atoms
2	A	301	NAD	C5D-O5D-PN-O2N
2	A	301	NAD	O4D-C1D-N1N-C2N
2	A	301	NAD	O4D-C1D-N1N-C6N
2	B	1301	NAD	O4B-C4B-C5B-O5B
3	A	302	IDN	C03-C04-C07-C08
3	A	302	IDN	C07-C08-C09-O10
3	B	1302	IDN	C07-C08-C09-O10
3	B	1302	IDN	C03-C04-C07-C08
3	B	1302	IDN	C07-C08-C09-N11
3	A	302	IDN	C07-C08-C09-N11
3	B	1302	IDN	C05-C04-C07-C08
2	B	1301	NAD	C3B-C4B-C5B-O5B
2	B	1301	NAD	PA-O3-PN-O2N
2	B	1301	NAD	C5D-O5D-PN-O3
2	A	301	NAD	C5D-O5D-PN-O3
2	A	301	NAD	C2D-C1D-N1N-C6N
2	B	1301	NAD	PA-O3-PN-O1N
2	B	1301	NAD	C5B-O5B-PA-O1A

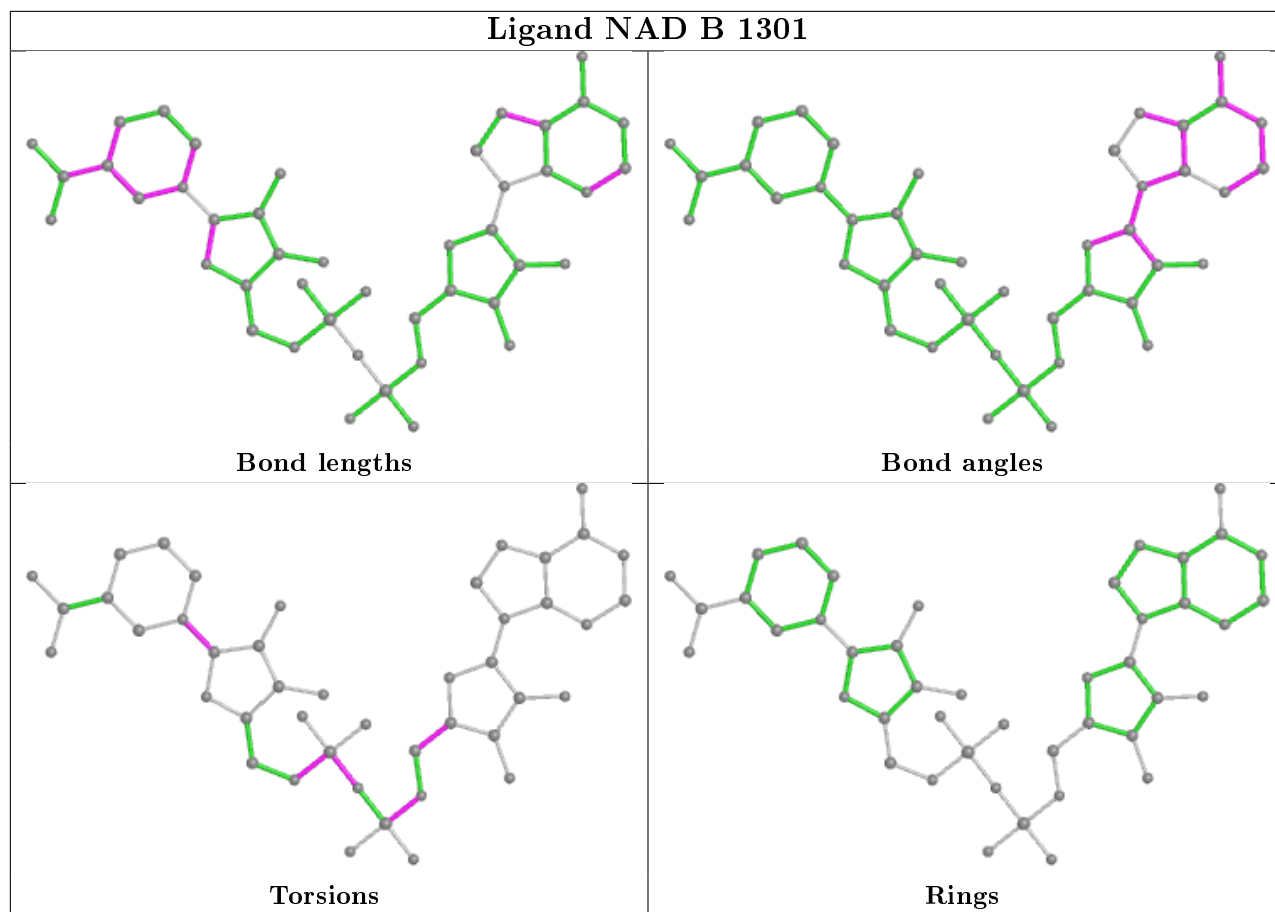
There are no ring outliers.

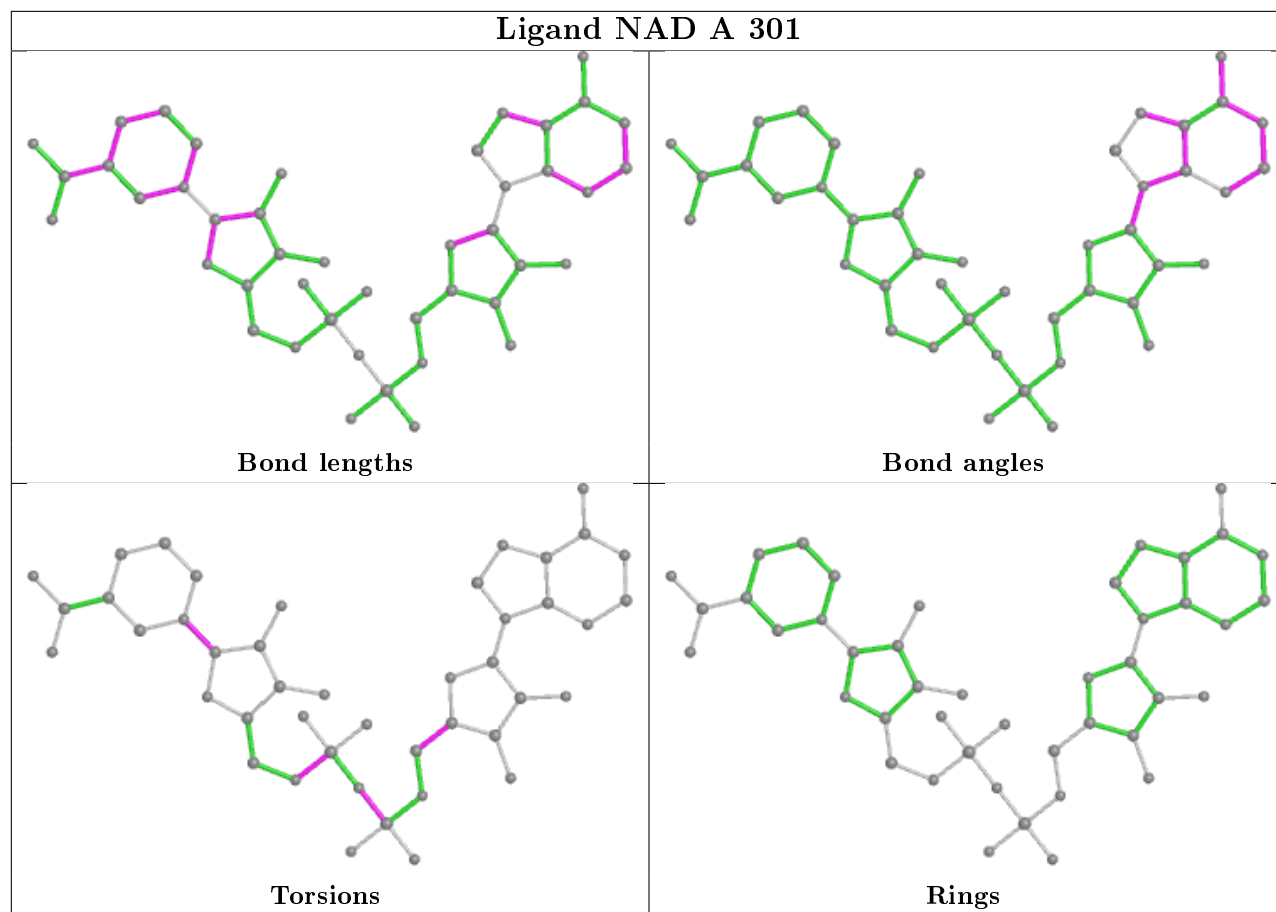
4 monomers are involved in 15 short contacts:

Mol	Chain	Res	Type	Clashes	Symm-Clashes
3	A	302	IDN	6	0
3	B	1302	IDN	5	0
2	B	1301	NAD	3	0
2	A	301	NAD	2	0

The following is a two-dimensional graphical depiction of Mogul quality analysis of bond lengths, bond angles, torsion angles, and ring geometry for all instances of the Ligand of Interest. In addition, ligands with molecular weight > 250 and outliers as shown on the validation Tables will also be included. For torsion angles, if less than 5% of the Mogul distribution of torsion angles is within 10 degrees of the torsion angle in question, then that torsion angle is considered an outlier. Any bond that is central to one or more torsion angles identified as an outlier by Mogul will be highlighted in the graph. For rings, the root-mean-square deviation (RMSD) between the ring in question and similar rings identified by Mogul is calculated over all ring torsion angles. If the average RMSD is greater than 60 degrees and the minimal RMSD between the ring in question and any Mogul-identified rings is also greater than 60 degrees, then that ring is considered an outlier. The outliers are highlighted in purple. The color gray indicates Mogul did not find sufficient equivalents in the CSD to analyse the geometry.







5.7 Other polymers [i](#)

There are no such residues in this entry.

5.8 Polymer linkage issues [i](#)

There are no chain breaks in this entry.

6 Fit of model and data

6.1 Protein, DNA and RNA chains

In the following table, the column labelled '#RSRZ > 2' contains the number (and percentage) of RSRZ outliers, followed by percent RSRZ outliers for the chain as percentile scores relative to all X-ray entries and entries of similar resolution. The OWAB column contains the minimum, median, 95th percentile and maximum values of the occupancy-weighted average B-factor per residue. The column labelled 'Q < 0.9' lists the number of (and percentage) of residues with an average occupancy less than 0.9.

Mol	Chain	Analysed	<RSRZ>	#RSRZ>2	OWAB(Å ²)	Q<0.9
1	A	258/262 (98%)	0.24	23 (8%) 9 15	15, 28, 57, 85	0
1	B	258/262 (98%)	0.10	13 (5%) 28 39	14, 26, 57, 91	0
All	All	516/524 (98%)	0.17	36 (6%) 16 24	14, 27, 57, 91	0

All (36) RSRZ outliers are listed below:

Mol	Chain	Res	Type	RSRZ
1	B	1196	ALA	6.8
1	B	1200	ILE	6.3
1	A	199	GLY	6.0
1	B	1198	SER	5.7
1	A	200	ILE	5.7
1	A	202	ASP	4.8
1	A	259	LEU	4.7
1	B	1205	LYS	4.7
1	B	1199	GLY	4.5
1	B	1202	ASP	4.1
1	B	1201	LYS	4.1
1	A	43	LYS	4.0
1	A	47	ARG	3.8
1	A	198	SER	3.8
1	A	204	ARG	3.3
1	B	1195	LEU	3.3
1	B	1197	ALA	3.2
1	A	201	LYS	3.1
1	A	2	GLY	3.0
1	A	158	VAL	3.0
1	A	41	ASN	3.0
1	A	196	ALA	2.9
1	A	193	ARG	2.7
1	A	97	GLY	2.7

Continued on next page...

Continued from previous page...

Mol	Chain	Res	Type	RSRZ
1	B	1158	VAL	2.6
1	B	1204	ARG	2.5
1	A	205	LYS	2.5
1	A	195	LEU	2.3
1	A	197	ALA	2.3
1	A	10	LEU	2.2
1	A	6	GLY	2.2
1	A	42	ASP	2.2
1	A	58	ASP	2.2
1	B	1011	VAL	2.2
1	A	203	PHE	2.2
1	B	1258	GLU	2.2

6.2 Non-standard residues in protein, DNA, RNA chains [i](#)

There are no non-standard protein/DNA/RNA residues in this entry.

6.3 Carbohydrates [i](#)

There are no carbohydrates in this entry.

6.4 Ligands [i](#)

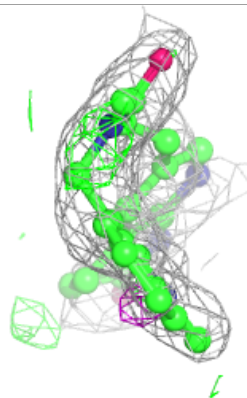
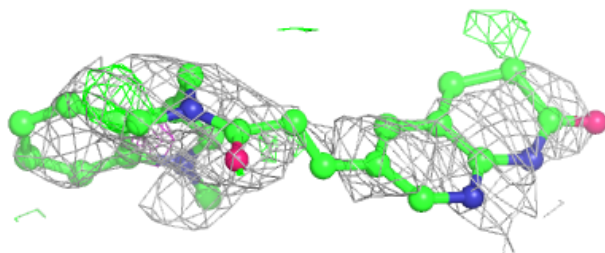
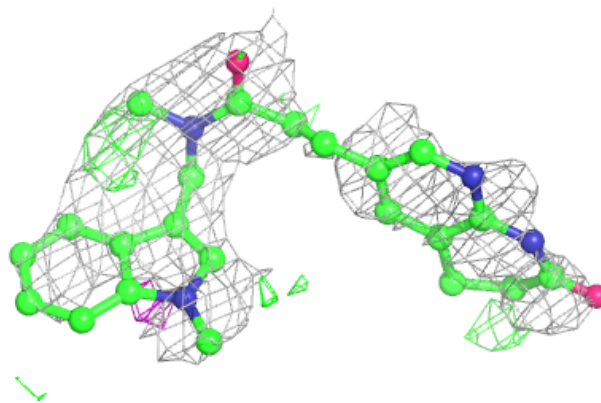
In the following table, the Atoms column lists the number of modelled atoms in the group and the number defined in the chemical component dictionary. The B-factors column lists the minimum, median, 95th percentile and maximum values of B factors of atoms in the group. The column labelled 'Q< 0.9' lists the number of atoms with occupancy less than 0.9.

Mol	Type	Chain	Res	Atoms	RSCC	RSR	B-factors(Å ²)	Q<0.9
3	IDN	A	302	28/28	0.56	0.38	83,87,88,88	0
3	IDN	B	1302	28/28	0.62	0.33	78,80,83,84	0
2	NAD	A	301	44/44	0.91	0.16	35,39,45,48	0
2	NAD	B	1301	44/44	0.94	0.14	34,39,46,49	0
4	SO4	B	1303	5/5	0.98	0.17	45,47,47,47	0

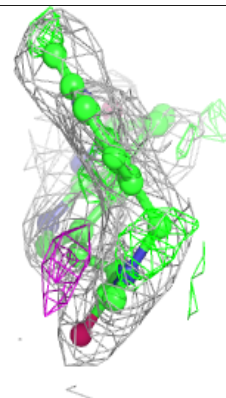
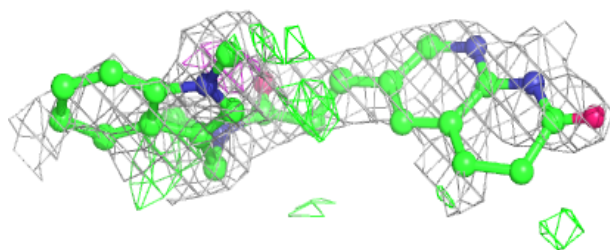
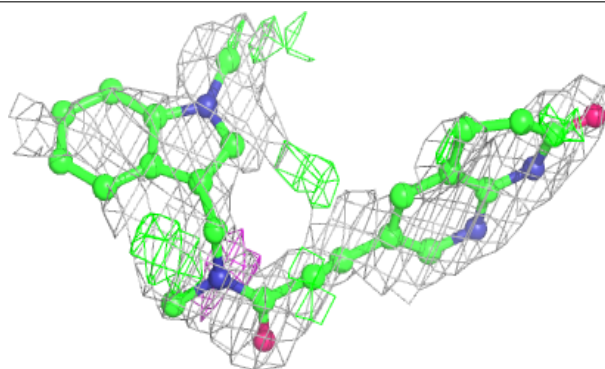
The following is a graphical depiction of the model fit to experimental electron density of all instances of the Ligand of Interest. In addition, ligands with molecular weight > 250 and outliers as shown on the geometry validation Tables will also be included. Each fit is shown from different orientation to approximate a three-dimensional view.

Electron density around IDN A 302:

$2mF_o-DF_c$ (at 0.7 rmsd) in gray
 mF_o-DF_c (at 3 rmsd) in purple (negative)
and green (positive)

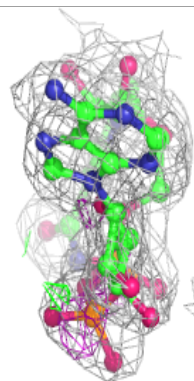
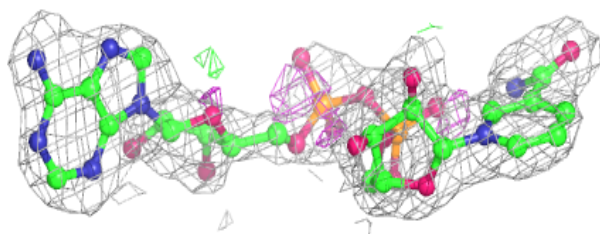
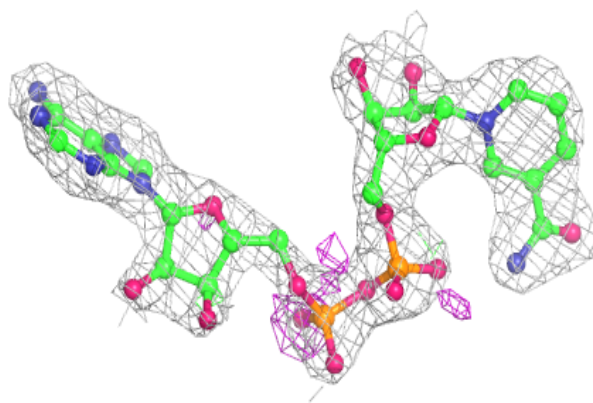
**Electron density around IDN B 1302:**

$2mF_o-DF_c$ (at 0.7 rmsd) in gray
 mF_o-DF_c (at 3 rmsd) in purple (negative)
and green (positive)

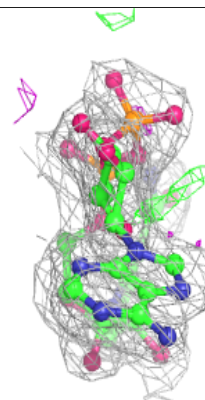
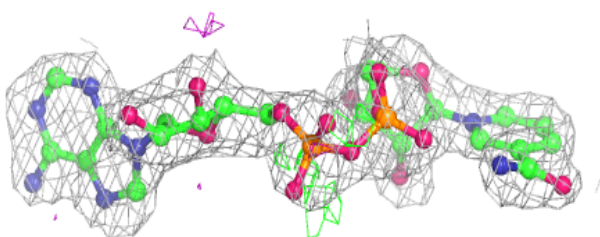
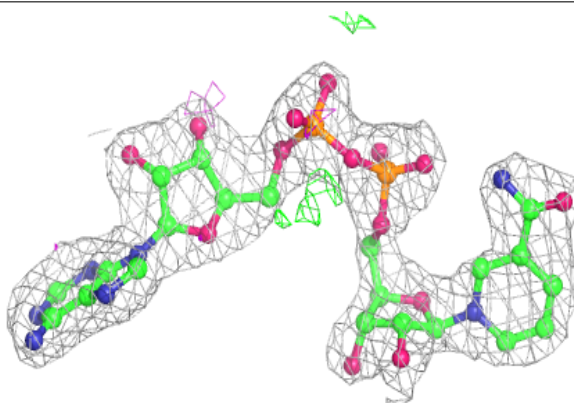


Electron density around NAD A 301:

$2mF_o-DF_c$ (at 0.7 rmsd) in gray
 mF_o-DF_c (at 3 rmsd) in purple (negative)
and green (positive)

**Electron density around NAD B 1301:**

$2mF_o-DF_c$ (at 0.7 rmsd) in gray
 mF_o-DF_c (at 3 rmsd) in purple (negative)
and green (positive)



6.5 Other polymers [i](#)

There are no such residues in this entry.