



wwPDB X-ray Structure Validation Summary Report ⓘ

Jan 6, 2024 – 08:53 pm GMT

PDB ID : 5MFP
Title : Human Sirt6 in complex with activator UBCS58
Authors : Steegborn, C.; You, W.; Kambach, C.
Deposited on : 2016-11-18
Resolution : 1.98 Å(reported)

This is a wwPDB X-ray Structure Validation Summary Report for a publicly released PDB entry.

We welcome your comments at validation@mail.wwpdb.org

A user guide is available at

<https://www.wwpdb.org/validation/2017/XrayValidationReportHelp>

with specific help available everywhere you see the ⓘ symbol.

The types of validation reports are described at

<http://www.wwpdb.org/validation/2017/FAQs#types>.

The following versions of software and data (see [references ⓘ](#)) were used in the production of this report:

MolProbity : 4.02b-467
Mogul : 1.8.4, CSD as541be (2020)
Xtriage (Phenix) : 1.13
EDS : 2.36
buster-report : 1.1.7 (2018)
Percentile statistics : 20191225.v01 (using entries in the PDB archive December 25th 2019)
Refmac : 5.8.0158
CCP4 : 7.0.044 (Gargrove)
Ideal geometry (proteins) : Engh & Huber (2001)
Ideal geometry (DNA, RNA) : Parkinson et al. (1996)
Validation Pipeline (wwPDB-VP) : 2.36

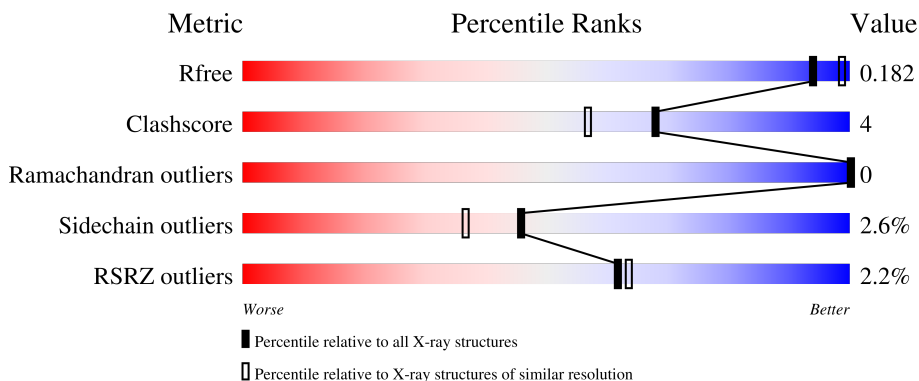
1 Overall quality at a glance

The following experimental techniques were used to determine the structure:

X-RAY DIFFRACTION

The reported resolution of this entry is 1.98 Å.

Percentile scores (ranging between 0-100) for global validation metrics of the entry are shown in the following graphic. The table shows the number of entries on which the scores are based.



Metric	Whole archive (#Entries)	Similar resolution (#Entries, resolution range(Å))
R_{free}	130704	11647 (2.00-1.96)
Clashscore	141614	1014 (1.98-1.98)
Ramachandran outliers	138981	1006 (1.98-1.98)
Sidechain outliers	138945	1006 (1.98-1.98)
RSRZ outliers	127900	11410 (2.00-1.96)

The table below summarises the geometric issues observed across the polymeric chains and their fit to the electron density. The red, orange, yellow and green segments of the lower bar indicate the fraction of residues that contain outliers for ≥ 3 , 2, 1 and 0 types of geometric quality criteria respectively. A grey segment represents the fraction of residues that are not modelled. The numeric value for each fraction is indicated below the corresponding segment, with a dot representing fractions $\leq 5\%$. The upper red bar (where present) indicates the fraction of residues that have poor fit to the electron density. The numeric value is given above the bar.

Mol	Chain	Length	Quality of chain
1	A	302	 3% 88% 5% 7%
1	B	302	 3% 82% 8% 9%

The following table lists non-polymeric compounds, carbohydrate monomers and non-standard residues in protein, DNA, RNA chains that are outliers for geometric or electron-density-fit criteria:

Mol	Type	Chain	Res	Chirality	Geometry	Clashes	Electron density
5	EDO	B	408	-	-	X	-

2 Entry composition [i](#)

There are 9 unique types of molecules in this entry. The entry contains 4719 atoms, of which 0 are hydrogens and 0 are deuteriums.

In the tables below, the ZeroOcc column contains the number of atoms modelled with zero occupancy, the AltConf column contains the number of residues with at least one atom in alternate conformation and the Trace column contains the number of residues modelled with at most 2 atoms.

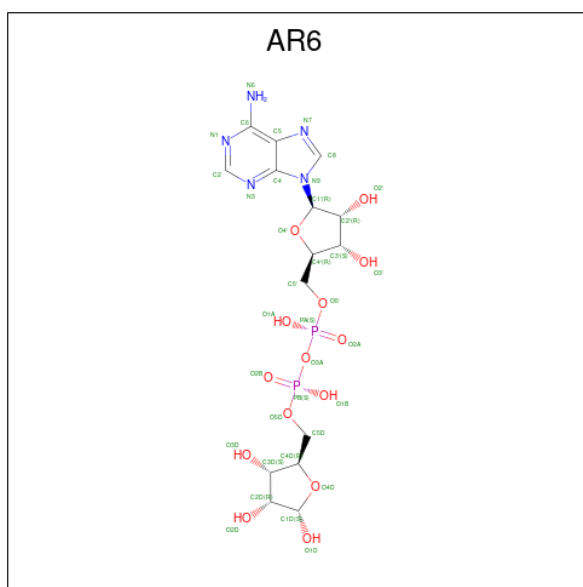
- Molecule 1 is a protein called NAD-dependent protein deacetylase sirtuin-6.

Mol	Chain	Residues	Atoms					ZeroOcc	AltConf	Trace
			Total	C	N	O	S			
1	A	282	2194	1382	404	397	11	0	0	0
1	B	275	2151	1353	400	387	11	0	1	0

There are 12 discrepancies between the modelled and reference sequences:

Chain	Residue	Modelled	Actual	Comment	Reference
A	7	GLY	-	expression tag	UNP Q8N6T7
A	8	ILE	GLY	expression tag	UNP Q8N6T7
A	9	ASP	LEU	expression tag	UNP Q8N6T7
A	10	PRO	SER	expression tag	UNP Q8N6T7
A	11	PHE	PRO	expression tag	UNP Q8N6T7
A	12	THR	TYR	expression tag	UNP Q8N6T7
B	7	GLY	-	expression tag	UNP Q8N6T7
B	8	ILE	GLY	expression tag	UNP Q8N6T7
B	9	ASP	LEU	expression tag	UNP Q8N6T7
B	10	PRO	SER	expression tag	UNP Q8N6T7
B	11	PHE	PRO	expression tag	UNP Q8N6T7
B	12	THR	TYR	expression tag	UNP Q8N6T7

- Molecule 2 is [(2R,3S,4R,5R)-5-(6-AMINOPURIN-9-YL)-3,4-DIHYDROXY-OXOLAN-2-YL]METHYL [HYDROXY-[(2R,3S,4R,5S)-3,4,5-TRIHYDROXYOXOLAN-2-YL]METHOXY]PHOSPHORYL] HYDROGEN PHOSPHATE (three-letter code: AR6) (formula: C₁₅H₂₃N₅O₁₄P₂).



Mol	Chain	Residues	Atoms				ZeroOcc	AltConf	
			Total	C	N	O			P
2	A	1	36	15	5	14	2	0	0
2	B	1	36	15	5	14	2	0	0

- Molecule 3 is ZINC ION (three-letter code: ZN) (formula: Zn).

Mol	Chain	Residues	Atoms		ZeroOcc	AltConf
			Total	Zn		
3	A	1	1	1	0	0
3	B	1	1	1	0	0

- Molecule 4 is SULFATE ION (three-letter code: SO4) (formula: O₄S).



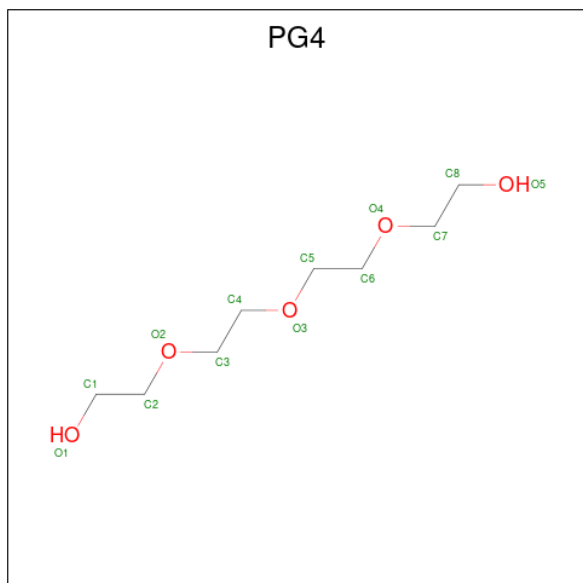
Mol	Chain	Residues	Atoms	ZeroOcc	AltConf
4	A	1	Total O S 5 4 1	0	0
4	A	1	Total O S 5 4 1	0	0
4	A	1	Total O S 5 4 1	0	0
4	A	1	Total O S 5 4 1	0	0
4	A	1	Total O S 5 4 1	0	0
4	B	1	Total O S 5 4 1	0	0
4	B	1	Total O S 5 4 1	0	0
4	B	1	Total O S 5 4 1	0	0
4	B	1	Total O S 5 4 1	0	0

- Molecule 5 is 1,2-ETHANEDIOL (three-letter code: EDO) (formula: C₂H₆O₂).



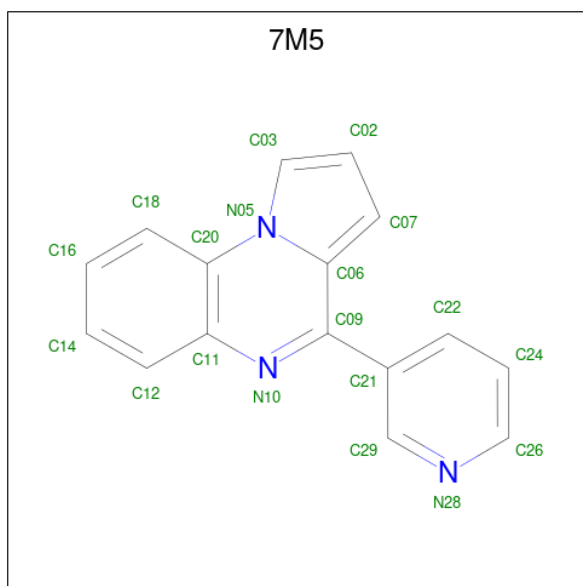
Mol	Chain	Residues	Atoms	ZeroOcc	AltConf
5	A	1	Total C O 4 2 2	0	0
5	A	1	Total C O 4 2 2	0	0
5	B	1	Total C O 4 2 2	0	0
5	B	1	Total C O 4 2 2	0	0

- Molecule 6 is TETRAETHYLENE GLYCOL (three-letter code: PG4) (formula: C₈H₁₈O₅).



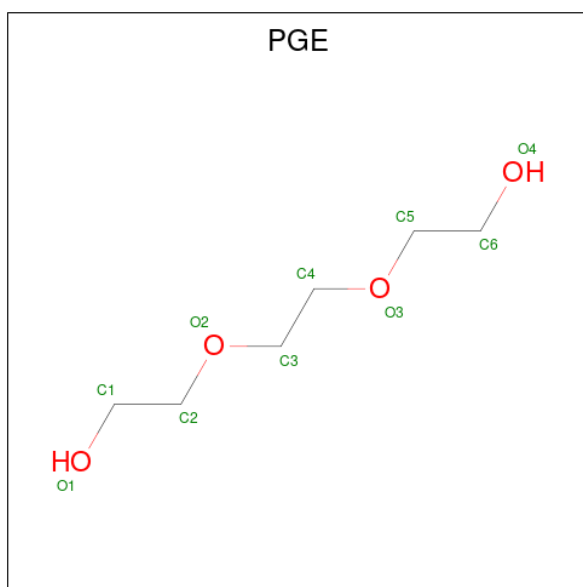
Mol	Chain	Residues	Atoms			ZeroOcc	AltConf
6	A	1	Total	C	O	0	0
			13	8	5		

- Molecule 7 is 4-pyridin-3-ylpyrrolo[1,2-a]quinoxaline (three-letter code: 7M5) (formula: $C_{16}H_{11}N_3$).



Mol	Chain	Residues	Atoms			ZeroOcc	AltConf
7	A	1	Total	C	N	0	0
			19	16	3		
7	B	1	Total	C	N	0	0
			19	16	3		

- Molecule 8 is TRIETHYLENE GLYCOL (three-letter code: PGE) (formula: $C_6H_{14}O_4$).



Mol	Chain	Residues	Atoms		ZeroOcc	AltConf
8	B	1	Total	C O	0	0
			10	6 4		

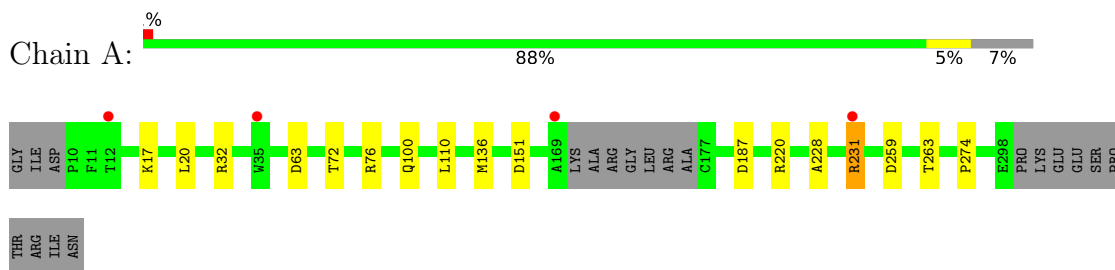
- Molecule 9 is water.

Mol	Chain	Residues	Atoms		ZeroOcc	AltConf
9	A	100	Total	O	0	0
			100	100		
9	B	78	Total	O	0	0
			78	78		

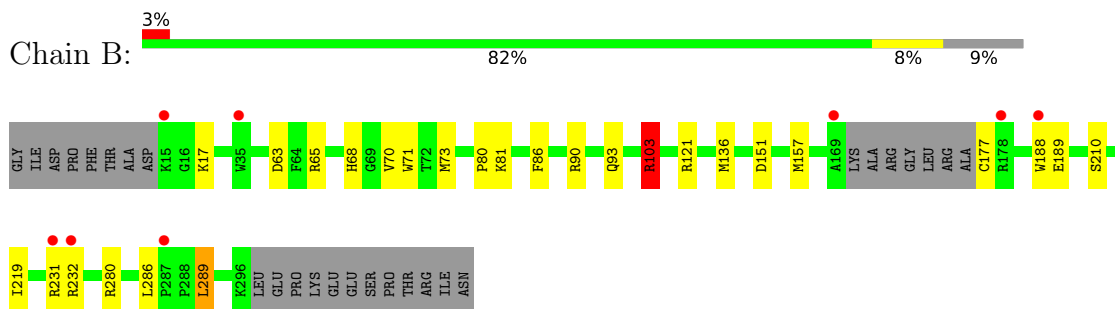
3 Residue-property plots [i](#)

These plots are drawn for all protein, RNA, DNA and oligosaccharide chains in the entry. The first graphic for a chain summarises the proportions of the various outlier classes displayed in the second graphic. The second graphic shows the sequence view annotated by issues in geometry and electron density. Residues are color-coded according to the number of geometric quality criteria for which they contain at least one outlier: green = 0, yellow = 1, orange = 2 and red = 3 or more. A red dot above a residue indicates a poor fit to the electron density ($RSRZ > 2$). Stretches of 2 or more consecutive residues without any outlier are shown as a green connector. Residues present in the sample, but not in the model, are shown in grey.

- Molecule 1: NAD-dependent protein deacetylase sirtuin-6



- Molecule 1: NAD-dependent protein deacetylase sirtuin-6



4 Data and refinement statistics i

Property	Value	Source
Space group	P 63	Depositor
Cell constants a, b, c, α , β , γ	91.38Å 91.38Å 144.15Å 90.00° 90.00° 120.00°	Depositor
Resolution (Å)	45.69 – 1.98 45.69 – 1.98	Depositor EDS
% Data completeness (in resolution range)	99.6 (45.69-1.98) 99.6 (45.69-1.98)	Depositor EDS
R_{merge}	(Not available)	Depositor
R_{sym}	(Not available)	Depositor
$\langle I/\sigma(I) \rangle$ ¹	2.02 (at 1.98Å)	Xtriage
Refinement program	REFMAC 5.8.0155	Depositor
R, R_{free}	0.157 , 0.185 0.155 , 0.182	Depositor DCC
R_{free} test set	2418 reflections (5.08%)	wwPDB-VP
Wilson B-factor (Å ²)	27.6	Xtriage
Anisotropy	0.451	Xtriage
Bulk solvent k_{sol} (e/Å ³), B_{sol} (Å ²)	0.34 , 25.9	EDS
L-test for twinning ²	$\langle L \rangle = 0.41$, $\langle L^2 \rangle = 0.23$	Xtriage
Estimated twinning fraction	0.228 for h,-h-k,-l	Xtriage
Reported twinning fraction	0.762 for H, K, L 0.238 for K, H, -L	Depositor
Outliers	0 of 47561 reflections	Xtriage
F_o, F_c correlation	0.97	EDS
Total number of atoms	4719	wwPDB-VP
Average B, all atoms (Å ²)	33.0	wwPDB-VP

Xtriage's analysis on translational NCS is as follows: *The largest off-origin peak in the Patterson function is 3.86% of the height of the origin peak. No significant pseudotranslation is detected.*

¹Intensities estimated from amplitudes.

²Theoretical values of $\langle |L| \rangle$, $\langle L^2 \rangle$ for acentric reflections are 0.5, 0.333 respectively for untwinned datasets, and 0.375, 0.2 for perfectly twinned datasets.

5 Model quality [i](#)

5.1 Standard geometry [i](#)

Bond lengths and bond angles in the following residue types are not validated in this section: PG4, SO4, 7M5, ZN, PGE, EDO, AR6

The Z score for a bond length (or angle) is the number of standard deviations the observed value is removed from the expected value. A bond length (or angle) with $|Z| > 5$ is considered an outlier worth inspection. RMSZ is the root-mean-square of all Z scores of the bond lengths (or angles).

Mol	Chain	Bond lengths		Bond angles	
		RMSZ	# Z >5	RMSZ	# Z >5
1	A	1.08	0/2243	1.11	5/3043 (0.2%)
1	B	0.97	0/2201	1.11	12/2984 (0.4%)
All	All	1.03	0/4444	1.11	17/6027 (0.3%)

There are no bond length outliers.

The worst 5 of 17 bond angle outliers are listed below:

Mol	Chain	Res	Type	Atoms	Z	Observed(°)	Ideal(°)
1	B	65	ARG	NE-CZ-NH1	10.13	125.37	120.30
1	A	136	MET	CA-CB-CG	9.13	128.82	113.30
1	B	103[A]	ARG	NE-CZ-NH1	8.25	124.42	120.30
1	B	103[B]	ARG	NE-CZ-NH1	8.25	124.42	120.30
1	B	151	ASP	CB-CG-OD1	6.50	124.15	118.30

There are no chirality outliers.

There are no planarity outliers.

5.2 Too-close contacts [i](#)

In the following table, the Non-H and H(model) columns list the number of non-hydrogen atoms and hydrogen atoms in the chain respectively. The H(added) column lists the number of hydrogen atoms added and optimized by MolProbity. The Clashes column lists the number of clashes within the asymmetric unit, whereas Symm-Clashes lists symmetry-related clashes.

Mol	Chain	Non-H	H(model)	H(added)	Clashes	Symm-Clashes
1	A	2194	0	2207	8	0
1	B	2151	0	2174	26	0
2	A	36	0	20	1	0
2	B	36	0	21	0	0

Continued on next page...

Continued from previous page...

Mol	Chain	Non-H	H(model)	H(added)	Clashes	Symm-Clashes
3	A	1	0	0	0	0
3	B	1	0	0	0	0
4	A	25	0	0	0	0
4	B	20	0	0	1	0
5	A	8	0	12	0	0
5	B	8	0	12	13	0
6	A	13	0	18	0	0
7	A	19	0	0	0	0
7	B	19	0	0	0	0
8	B	10	0	14	0	0
9	A	100	0	0	2	0
9	B	78	0	0	1	1
All	All	4719	0	4478	34	1

The all-atom clashscore is defined as the number of clashes found per 1000 atoms (including hydrogen atoms). The all-atom clashscore for this structure is 4.

The worst 5 of 34 close contacts within the same asymmetric unit are listed below, sorted by their clash magnitude.

Atom-1	Atom-2	Interatomic distance (Å)	Clash overlap (Å)
1:B:103[A]:ARG:NH2	5:B:409:EDO:O2	2.19	0.75
1:A:228:ALA:O	1:A:231:ARG:HD2	1.85	0.75
1:B:103[A]:ARG:CZ	5:B:408:EDO:H22	2.17	0.74
1:B:103[A]:ARG:CD	5:B:408:EDO:H22	2.25	0.67
1:B:289:LEU:HD21	5:B:408:EDO:H11	1.77	0.66

All (1) symmetry-related close contacts are listed below. The label for Atom-2 includes the symmetry operator and encoded unit-cell translations to be applied.

Atom-1	Atom-2	Interatomic distance (Å)	Clash overlap (Å)
9:B:578:HOH:O	9:B:578:HOH:O[3_765]	1.25	0.95

5.3 Torsion angles [i](#)

5.3.1 Protein backbone [i](#)

In the following table, the Percentiles column shows the percent Ramachandran outliers of the chain as a percentile score with respect to all X-ray entries followed by that with respect to entries of similar resolution.

The Analysed column shows the number of residues for which the backbone conformation was analysed, and the total number of residues.

Mol	Chain	Analysed	Favoured	Allowed	Outliers	Percentiles	
1	A	278/302 (92%)	274 (99%)	4 (1%)	0	100	100
1	B	272/302 (90%)	268 (98%)	4 (2%)	0	100	100
All	All	550/604 (91%)	542 (98%)	8 (2%)	0	100	100

There are no Ramachandran outliers to report.

5.3.2 Protein sidechains [i](#)

In the following table, the Percentiles column shows the percent sidechain outliers of the chain as a percentile score with respect to all X-ray entries followed by that with respect to entries of similar resolution.

The Analysed column shows the number of residues for which the sidechain conformation was analysed, and the total number of residues.

Mol	Chain	Analysed	Rotameric	Outliers	Percentiles	
1	A	237/256 (93%)	235 (99%)	2 (1%)	81	80
1	B	233/256 (91%)	222 (95%)	11 (5%)	26	13
All	All	470/512 (92%)	457 (97%)	13 (3%)	46	32

5 of 13 residues with a non-rotameric sidechain are listed below:

Mol	Chain	Res	Type
1	B	177	CYS
1	B	210	SER
1	B	286	LEU
1	B	231	ARG
1	B	232	ARG

Sometimes sidechains can be flipped to improve hydrogen bonding and reduce clashes. All (1) such sidechains are listed below:

Mol	Chain	Res	Type
1	B	93	GLN

5.3.3 RNA [i](#)

There are no RNA molecules in this entry.

5.4 Non-standard residues in protein, DNA, RNA chains [i](#)

There are no non-standard protein/DNA/RNA residues in this entry.

5.5 Carbohydrates [i](#)

There are no monosaccharides in this entry.

5.6 Ligand geometry [i](#)

Of 21 ligands modelled in this entry, 2 are monoatomic - leaving 19 for Mogul analysis.

In the following table, the Counts columns list the number of bonds (or angles) for which Mogul statistics could be retrieved, the number of bonds (or angles) that are observed in the model and the number of bonds (or angles) that are defined in the Chemical Component Dictionary. The Link column lists molecule types, if any, to which the group is linked. The Z score for a bond length (or angle) is the number of standard deviations the observed value is removed from the expected value. A bond length (or angle) with $|Z| > 2$ is considered an outlier worth inspection. RMSZ is the root-mean-square of all Z scores of the bond lengths (or angles).

Mol	Type	Chain	Res	Link	Bond lengths			Bond angles		
					Counts	RMSZ	# Z > 2	Counts	RMSZ	# Z > 2
5	EDO	A	408	-	3,3,3	0.55	0	2,2,2	0.24	0
5	EDO	B	409	-	3,3,3	0.57	0	2,2,2	0.71	0
4	SO4	B	403	-	4,4,4	0.44	0	6,6,6	0.94	0
4	SO4	A	405	-	4,4,4	0.27	0	6,6,6	0.63	0
6	PG4	A	410	-	12,12,12	0.57	0	11,11,11	0.73	0
5	EDO	A	409	-	3,3,3	0.54	0	2,2,2	0.22	0
4	SO4	A	403	-	4,4,4	0.53	0	6,6,6	1.12	0
4	SO4	B	405	-	4,4,4	0.74	0	6,6,6	0.84	0
7	7M5	B	410	-	19,22,22	2.44	3 (15%)	22,31,31	1.60	4 (18%)
4	SO4	A	407	-	4,4,4	0.29	0	6,6,6	0.45	0
8	PGE	B	407	-	9,9,9	0.55	0	8,8,8	0.45	0
2	AR6	A	401	-	34,39,39	1.38	4 (11%)	40,60,60	1.39	6 (15%)
4	SO4	A	404	-	4,4,4	0.95	0	6,6,6	1.24	0
5	EDO	B	408	-	3,3,3	0.36	0	2,2,2	0.44	0
4	SO4	B	406	-	4,4,4	0.45	0	6,6,6	0.41	0
2	AR6	B	401	-	34,39,39	1.20	2 (5%)	40,60,60	1.77	10 (25%)
4	SO4	B	404	-	4,4,4	0.13	0	6,6,6	0.66	0
4	SO4	A	406	-	4,4,4	0.37	0	6,6,6	0.38	0
7	7M5	A	411	-	19,22,22	2.41	3 (15%)	22,31,31	1.62	4 (18%)

In the following table, the Chirals column lists the number of chiral outliers, the number of chiral

centers analysed, the number of these observed in the model and the number defined in the Chemical Component Dictionary. Similar counts are reported in the Torsion and Rings columns. '-' means no outliers of that kind were identified.

Mol	Type	Chain	Res	Link	Chirals	Torsions	Rings
7	7M5	B	410	-	-	1/4/4/4	0/4/4/4
5	EDO	A	408	-	-	1/1/1/1	-
5	EDO	B	409	-	-	1/1/1/1	-
8	PGE	B	407	-	-	3/7/7/7	-
5	EDO	A	409	-	-	1/1/1/1	-
2	AR6	A	401	-	-	1/18/54/54	0/4/4/4
6	PG4	A	410	-	-	3/10/10/10	-
7	7M5	A	411	-	-	1/4/4/4	0/4/4/4
5	EDO	B	408	-	-	0/1/1/1	-
2	AR6	B	401	-	-	2/18/54/54	0/4/4/4

The worst 5 of 12 bond length outliers are listed below:

Mol	Chain	Res	Type	Atoms	Z	Observed(Å)	Ideal(Å)
7	B	410	7M5	C03-C02	9.46	1.52	1.37
7	A	411	7M5	C03-C02	9.31	1.52	1.37
2	A	401	AR6	C1D-C2D	3.90	1.57	1.52
2	B	401	AR6	O4'-C1'	3.74	1.46	1.41
2	A	401	AR6	O3'-C3'	-2.86	1.36	1.43

The worst 5 of 24 bond angle outliers are listed below:

Mol	Chain	Res	Type	Atoms	Z	Observed(°)	Ideal(°)
7	B	410	7M5	C09-C06-N05	-5.15	115.48	123.20
7	A	411	7M5	C09-C06-N05	-4.66	116.20	123.20
2	B	401	AR6	O1D-C1D-O4D	4.33	116.68	111.13
7	B	410	7M5	C02-C07-C06	3.95	113.56	108.39
7	A	411	7M5	C02-C07-C06	3.88	113.46	108.39

There are no chirality outliers.

5 of 14 torsion outliers are listed below:

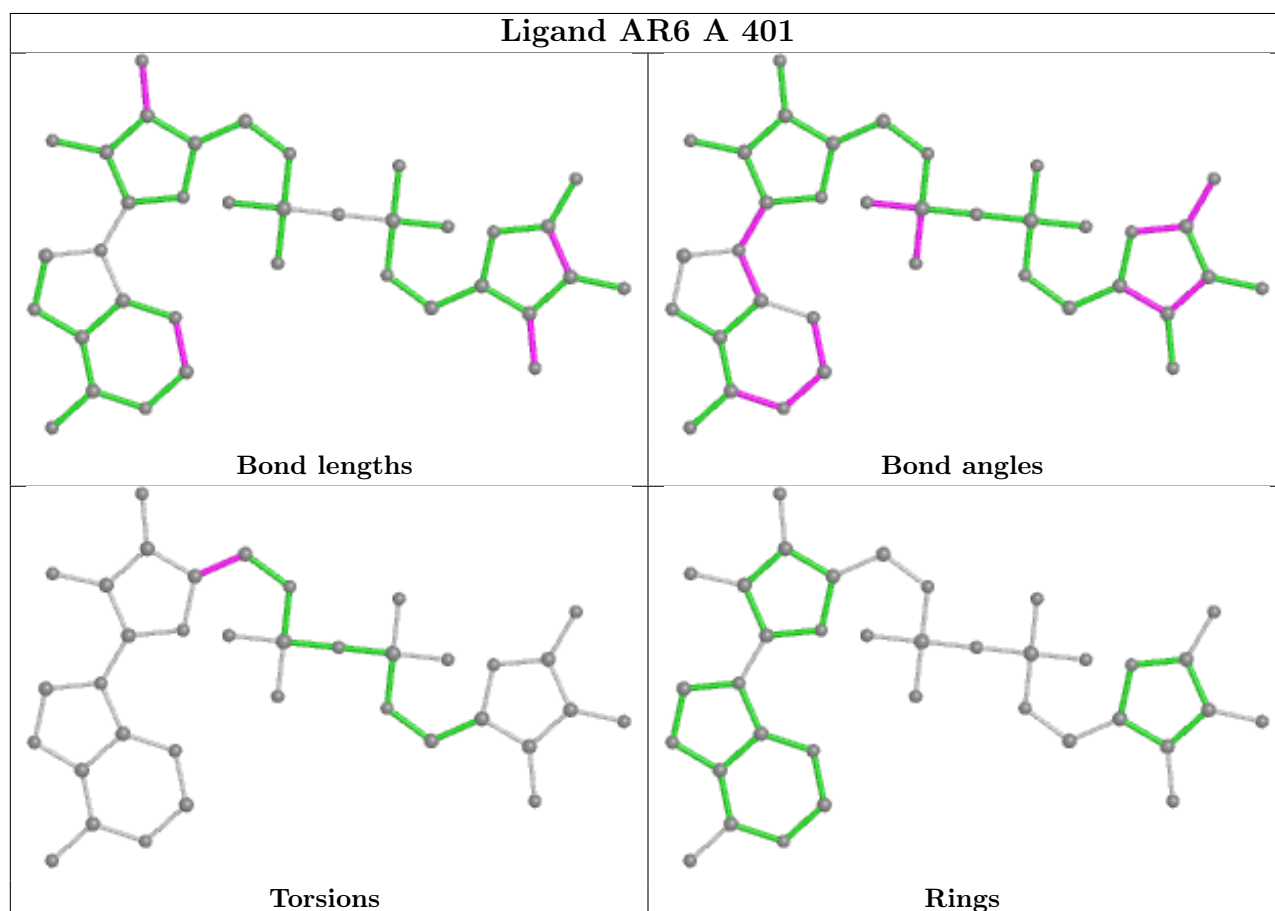
Mol	Chain	Res	Type	Atoms
7	A	411	7M5	N10-C09-C21-C29
6	A	410	PG4	O3-C5-C6-O4
8	B	407	PGE	O2-C3-C4-O3
8	B	407	PGE	O3-C5-C6-O4
5	A	408	EDO	O1-C1-C2-O2

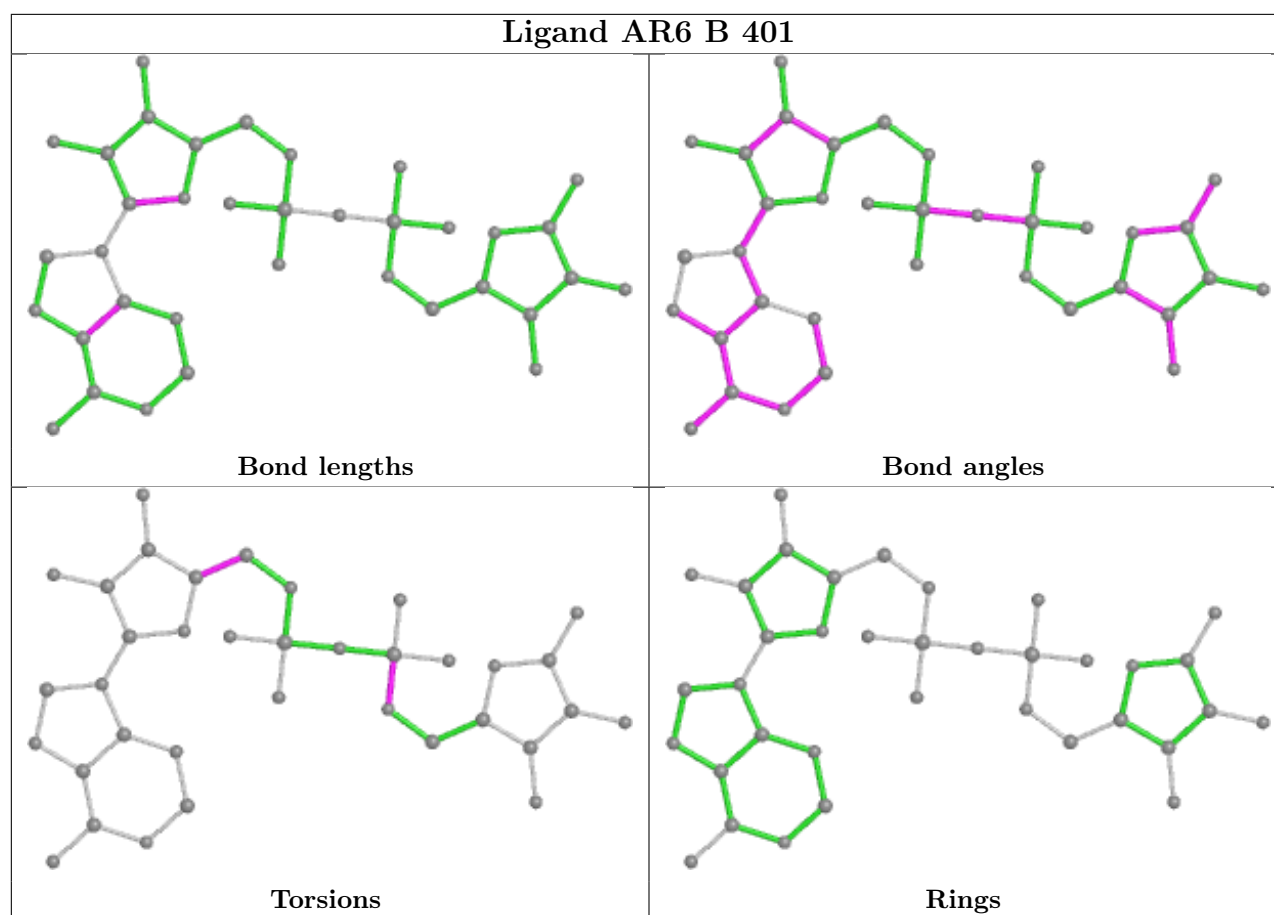
There are no ring outliers.

4 monomers are involved in 15 short contacts:

Mol	Chain	Res	Type	Clashes	Symm-Clashes
5	B	409	EDO	3	0
4	B	403	SO4	1	0
2	A	401	AR6	1	0
5	B	408	EDO	10	0

The following is a two-dimensional graphical depiction of Mogul quality analysis of bond lengths, bond angles, torsion angles, and ring geometry for all instances of the Ligand of Interest. In addition, ligands with molecular weight > 250 and outliers as shown on the validation Tables will also be included. For torsion angles, if less than 5% of the Mogul distribution of torsion angles is within 10 degrees of the torsion angle in question, then that torsion angle is considered an outlier. Any bond that is central to one or more torsion angles identified as an outlier by Mogul will be highlighted in the graph. For rings, the root-mean-square deviation (RMSD) between the ring in question and similar rings identified by Mogul is calculated over all ring torsion angles. If the average RMSD is greater than 60 degrees and the minimal RMSD between the ring in question and any Mogul-identified rings is also greater than 60 degrees, then that ring is considered an outlier. The outliers are highlighted in purple. The color gray indicates Mogul did not find sufficient equivalents in the CSD to analyse the geometry.





5.7 Other polymers [i](#)

There are no such residues in this entry.

5.8 Polymer linkage issues [i](#)

There are no chain breaks in this entry.

6 Fit of model and data [i](#)

6.1 Protein, DNA and RNA chains [i](#)

In the following table, the column labelled ‘#RSRZ> 2’ contains the number (and percentage) of RSRZ outliers, followed by percent RSRZ outliers for the chain as percentile scores relative to all X-ray entries and entries of similar resolution. The OWAB column contains the minimum, median, 95th percentile and maximum values of the occupancy-weighted average B-factor per residue. The column labelled ‘Q< 0.9’ lists the number of (and percentage) of residues with an average occupancy less than 0.9.

Mol	Chain	Analysed	<RSRZ>	#RSRZ>2	OWAB(Å ²)	Q<0.9
1	A	282/302 (93%)	-0.38	4 (1%) 75 77	16, 26, 48, 69	0
1	B	275/302 (91%)	-0.17	8 (2%) 51 54	19, 33, 62, 81	0
All	All	557/604 (92%)	-0.28	12 (2%) 62 63	16, 30, 57, 81	0

The worst 5 of 12 RSRZ outliers are listed below:

Mol	Chain	Res	Type	RSRZ
1	B	188	TRP	4.3
1	A	12	THR	3.6
1	B	287	PRO	3.2
1	B	169	ALA	3.0
1	B	15	LYS	3.0

6.2 Non-standard residues in protein, DNA, RNA chains [i](#)

There are no non-standard protein/DNA/RNA residues in this entry.

6.3 Carbohydrates [i](#)

There are no monosaccharides in this entry.

6.4 Ligands [i](#)

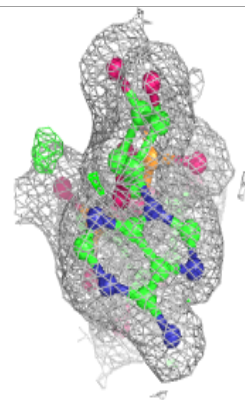
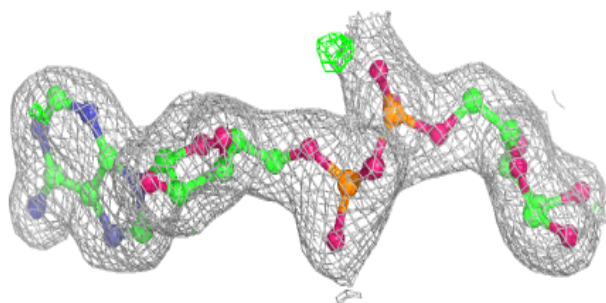
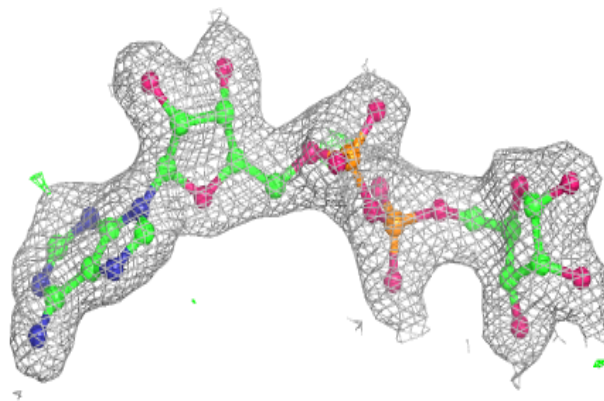
In the following table, the Atoms column lists the number of modelled atoms in the group and the number defined in the chemical component dictionary. The B-factors column lists the minimum, median, 95th percentile and maximum values of B factors of atoms in the group. The column labelled ‘Q< 0.9’ lists the number of atoms with occupancy less than 0.9.

Mol	Type	Chain	Res	Atoms	RSCC	RSR	B-factors(\AA^2)	Q<0.9
5	EDO	B	409	4/4	0.74	0.23	52,55,57,59	0
5	EDO	B	408	4/4	0.75	0.22	31,35,38,45	0
5	EDO	A	408	4/4	0.85	0.14	45,47,48,51	0
6	PG4	A	410	13/13	0.85	0.11	44,51,56,57	0
4	SO4	A	404	5/5	0.88	0.19	39,48,63,65	0
7	7M5	A	411	19/19	0.89	0.22	25,43,52,52	0
7	7M5	B	410	19/19	0.90	0.21	29,47,54,54	0
8	PGE	B	407	10/10	0.90	0.11	53,56,61,62	0
4	SO4	B	406	5/5	0.93	0.17	60,60,75,75	0
3	ZN	B	402	1/1	0.94	0.07	50,50,50,50	0
4	SO4	A	407	5/5	0.94	0.13	68,71,82,86	0
5	EDO	A	409	4/4	0.95	0.07	37,37,42,49	0
4	SO4	B	405	5/5	0.96	0.14	57,58,63,63	0
4	SO4	A	406	5/5	0.97	0.12	55,58,61,65	0
3	ZN	A	402	1/1	0.97	0.09	40,40,40,40	0
2	AR6	B	401	36/36	0.98	0.08	21,26,34,39	0
4	SO4	B	404	5/5	0.98	0.07	48,58,59,60	0
4	SO4	A	403	5/5	0.98	0.14	45,54,61,66	0
4	SO4	B	403	5/5	0.99	0.08	34,36,45,56	0
2	AR6	A	401	36/36	0.99	0.08	16,19,22,23	0
4	SO4	A	405	5/5	0.99	0.07	51,52,59,62	0

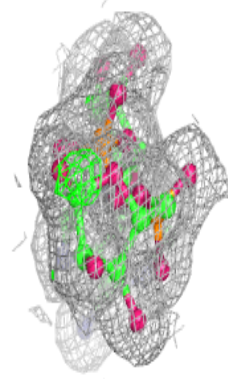
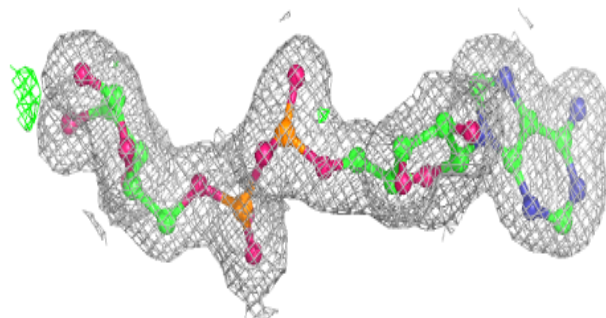
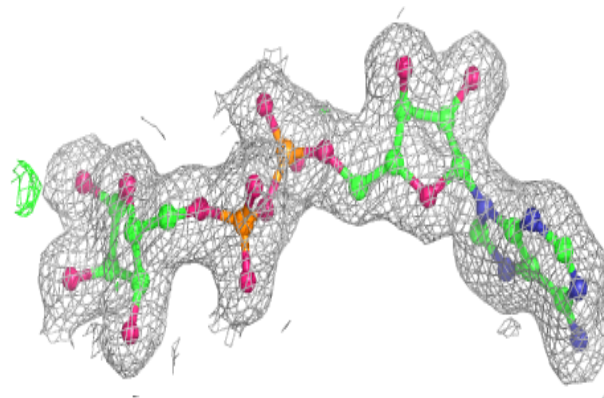
The following is a graphical depiction of the model fit to experimental electron density of all instances of the Ligand of Interest. In addition, ligands with molecular weight > 250 and outliers as shown on the geometry validation Tables will also be included. Each fit is shown from different orientation to approximate a three-dimensional view.

Electron density around AR6 B 401:

$2mF_o-DF_c$ (at 0.7 rmsd) in gray
 mF_o-DF_c (at 3 rmsd) in purple (negative)
and green (positive)

**Electron density around AR6 A 401:**

$2mF_o-DF_c$ (at 0.7 rmsd) in gray
 mF_o-DF_c (at 3 rmsd) in purple (negative)
and green (positive)



6.5 Other polymers [i](#)

There are no such residues in this entry.