



Full wwPDB X-ray Structure Validation Report ⓘ

Oct 2, 2023 – 01:34 AM EDT

PDB ID : 6MFC
Title : GphF GNAT-like decarboxylase
Authors : Skiba, M.A.; Tran, C.L.; Smith, J.L.
Deposited on : 2018-09-10
Resolution : 2.59 Å(reported)

This is a Full wwPDB X-ray Structure Validation Report for a publicly released PDB entry.

We welcome your comments at validation@mail.wwpdb.org

A user guide is available at

<https://www.wwpdb.org/validation/2017/XrayValidationReportHelp>

with specific help available everywhere you see the ⓘ symbol.

The types of validation reports are described at

<http://www.wwpdb.org/validation/2017/FAQs#types>.

The following versions of software and data (see [references ⓘ](#)) were used in the production of this report:

MolProbity : **FAILED**
Mogul : 1.8.5 (274361), CSD as541be (2020)
Xtrriage (Phenix) : 1.13
EDS : **FAILED**
Percentile statistics : 20191225.v01 (using entries in the PDB archive December 25th 2019)
Ideal geometry (proteins) : Engh & Huber (2001)
Ideal geometry (DNA, RNA) : Parkinson et al. (1996)
Validation Pipeline (wwPDB-VP) : 2.35.1

1 Overall quality at a glance

The following experimental techniques were used to determine the structure:

X-RAY DIFFRACTION

The reported resolution of this entry is 2.59 Å.

There are no overall percentile quality scores available for this entry.

MolProbity and EDS failed to run properly - the sequence quality summary graphics cannot be shown.

2 Entry composition i

There are 4 unique types of molecules in this entry. The entry contains 3011 atoms, of which 0 are hydrogens and 0 are deuteriums.

In the tables below, the ZeroOcc column contains the number of atoms modelled with zero occupancy, the AltConf column contains the number of residues with at least one atom in alternate conformation and the Trace column contains the number of residues modelled with at most 2 atoms.

- Molecule 1 is a protein called GphF.

Mol	Chain	Residues	Atoms					ZeroOcc	AltConf	Trace
			Total	C	N	O	S			
1	B	195	1467	915	291	257	4	0	0	0
1	A	195	1467	915	291	257	4	0	0	0

There are 48 discrepancies between the modelled and reference sequences:

Chain	Residue	Modelled	Actual	Comment	Reference
B	474	MET	-	initiating methionine	UNP U6BSB2
B	475	HIS	-	expression tag	UNP U6BSB2
B	476	HIS	-	expression tag	UNP U6BSB2
B	477	HIS	-	expression tag	UNP U6BSB2
B	478	HIS	-	expression tag	UNP U6BSB2
B	479	HIS	-	expression tag	UNP U6BSB2
B	480	HIS	-	expression tag	UNP U6BSB2
B	481	SER	-	expression tag	UNP U6BSB2
B	482	SER	-	expression tag	UNP U6BSB2
B	483	GLY	-	expression tag	UNP U6BSB2
B	484	VAL	-	expression tag	UNP U6BSB2
B	485	ASP	-	expression tag	UNP U6BSB2
B	486	LEU	-	expression tag	UNP U6BSB2
B	487	GLY	-	expression tag	UNP U6BSB2
B	488	THR	-	expression tag	UNP U6BSB2
B	489	GLU	-	expression tag	UNP U6BSB2
B	490	ASN	-	expression tag	UNP U6BSB2
B	491	LEU	-	expression tag	UNP U6BSB2
B	492	TYR	-	expression tag	UNP U6BSB2
B	493	PHE	-	expression tag	UNP U6BSB2
B	494	GLN	-	expression tag	UNP U6BSB2
B	495	SER	-	expression tag	UNP U6BSB2
B	496	ASN	-	expression tag	UNP U6BSB2
B	497	ALA	-	expression tag	UNP U6BSB2
A	474	MET	-	initiating methionine	UNP U6BSB2

Continued on next page...

Continued from previous page...

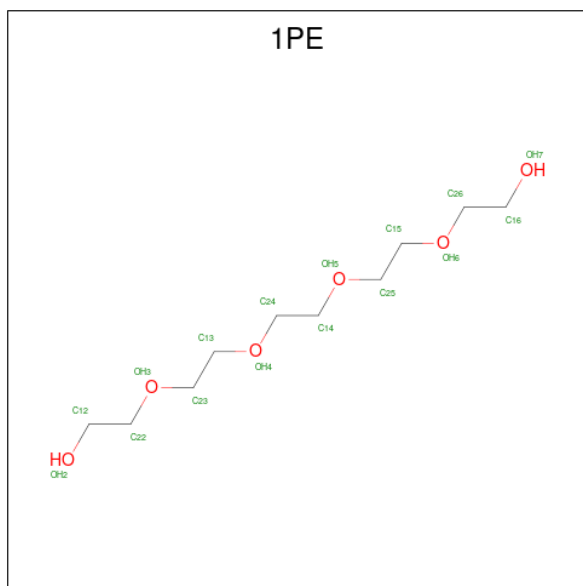
Chain	Residue	Modelled	Actual	Comment	Reference
A	475	HIS	-	expression tag	UNP U6BSB2
A	476	HIS	-	expression tag	UNP U6BSB2
A	477	HIS	-	expression tag	UNP U6BSB2
A	478	HIS	-	expression tag	UNP U6BSB2
A	479	HIS	-	expression tag	UNP U6BSB2
A	480	HIS	-	expression tag	UNP U6BSB2
A	481	SER	-	expression tag	UNP U6BSB2
A	482	SER	-	expression tag	UNP U6BSB2
A	483	GLY	-	expression tag	UNP U6BSB2
A	484	VAL	-	expression tag	UNP U6BSB2
A	485	ASP	-	expression tag	UNP U6BSB2
A	486	LEU	-	expression tag	UNP U6BSB2
A	487	GLY	-	expression tag	UNP U6BSB2
A	488	THR	-	expression tag	UNP U6BSB2
A	489	GLU	-	expression tag	UNP U6BSB2
A	490	ASN	-	expression tag	UNP U6BSB2
A	491	LEU	-	expression tag	UNP U6BSB2
A	492	TYR	-	expression tag	UNP U6BSB2
A	493	PHE	-	expression tag	UNP U6BSB2
A	494	GLN	-	expression tag	UNP U6BSB2
A	495	SER	-	expression tag	UNP U6BSB2
A	496	ASN	-	expression tag	UNP U6BSB2
A	497	ALA	-	expression tag	UNP U6BSB2

- Molecule 2 is GLYCEROL (three-letter code: GOL) (formula: C₃H₈O₃).



Mol	Chain	Residues	Atoms			ZeroOcc	AltConf
2	B	1	Total	C	O	0	0
			6	3	3		
2	B	1	Total	C	O	0	0
			6	3	3		
2	A	1	Total	C	O	0	0
			6	3	3		

- Molecule 3 is PENTAETHYLENE GLYCOL (three-letter code: 1PE) (formula: C₁₀H₂₂O₆).



Mol	Chain	Residues	Atoms			ZeroOcc	AltConf
3	B	1	Total	C	O	0	0
			7	5	2		
3	A	1	Total	C	O	0	0
			10	6	4		

- Molecule 4 is water.

Mol	Chain	Residues	Atoms		ZeroOcc	AltConf
4	B	24	Total	O	0	0
			24	24		
4	A	18	Total	O	0	0
			18	18		

MolProbity and EDS failed to run properly - this section is therefore empty.

3 Data and refinement statistics i

EDS failed to run properly - this section is therefore incomplete.

Property	Value	Source
Space group	C 2 2 21	Depositor
Cell constants a, b, c, α , β , γ	138.33Å 145.70Å 78.01Å 90.00° 90.00° 90.00°	Depositor
Resolution (Å)	43.96 – 2.59	Depositor
% Data completeness (in resolution range)	99.6 (43.96-2.59)	Depositor
R_{merge}	0.18	Depositor
R_{sym}	(Not available)	Depositor
$\langle I/\sigma(I) \rangle$ ¹	1.42 (at 2.58Å)	Xtrriage
Refinement program	PHENIX	Depositor
R, R_{free}	0.234 , 0.272	Depositor
Wilson B-factor (Å ²)	77.7	Xtrriage
Anisotropy	0.399	Xtrriage
L-test for twinning ²	$\langle L \rangle = 0.50$, $\langle L^2 \rangle = 0.33$	Xtrriage
Estimated twinning fraction	0.000 for -k,-h,-l	Xtrriage
Total number of atoms	3011	wwPDB-VP
Average B, all atoms (Å ²)	91.0	wwPDB-VP

Xtrriage's analysis on translational NCS is as follows: *The largest off-origin peak in the Patterson function is 6.94% of the height of the origin peak. No significant pseudotranslation is detected.*

¹ Intensities estimated from amplitudes.

² Theoretical values of $\langle |L| \rangle$, $\langle L^2 \rangle$ for acentric reflections are 0.5, 0.333 respectively for untwinned datasets, and 0.375, 0.2 for perfectly twinned datasets.

4 Model quality [i](#)

4.1 Standard geometry [i](#)

MolProbity failed to run properly - this section is therefore empty.

4.2 Too-close contacts [i](#)

MolProbity failed to run properly - this section is therefore empty.

4.3 Torsion angles [i](#)

4.3.1 Protein backbone [i](#)

MolProbity failed to run properly - this section is therefore empty.

4.3.2 Protein sidechains [i](#)

MolProbity failed to run properly - this section is therefore empty.

4.3.3 RNA [i](#)

MolProbity failed to run properly - this section is therefore empty.

4.4 Non-standard residues in protein, DNA, RNA chains [i](#)

There are no non-standard protein/DNA/RNA residues in this entry.

4.5 Carbohydrates [i](#)

There are no monosaccharides in this entry.

4.6 Ligand geometry [i](#)

5 ligands are modelled in this entry.

In the following table, the Counts columns list the number of bonds (or angles) for which Mogul statistics could be retrieved, the number of bonds (or angles) that are observed in the model and the number of bonds (or angles) that are defined in the Chemical Component Dictionary. The Link column lists molecule types, if any, to which the group is linked. The Z score for a bond

length (or angle) is the number of standard deviations the observed value is removed from the expected value. A bond length (or angle) with $|Z| > 2$ is considered an outlier worth inspection. RMSZ is the root-mean-square of all Z scores of the bond lengths (or angles).

Mol	Type	Chain	Res	Link	Bond lengths			Bond angles		
					Counts	RMSZ	# Z > 2	Counts	RMSZ	# Z > 2
2	GOL	B	801	-	5,5,5	0.93	0	5,5,5	0.99	0
3	1PE	B	803	-	6,6,15	0.51	0	5,5,14	0.25	0
3	1PE	A	802	-	9,9,15	0.51	0	8,8,14	0.25	0
2	GOL	B	802	-	5,5,5	0.90	0	5,5,5	1.03	0
2	GOL	A	801	-	5,5,5	0.88	0	5,5,5	1.02	0

In the following table, the Chirals column lists the number of chiral outliers, the number of chiral centers analysed, the number of these observed in the model and the number defined in the Chemical Component Dictionary. Similar counts are reported in the Torsion and Rings columns. '-' means no outliers of that kind were identified.

Mol	Type	Chain	Res	Link	Chirals	Torsions	Rings
2	GOL	B	801	-	-	4/4/4/4	-
3	1PE	B	803	-	-	3/4/4/13	-
3	1PE	A	802	-	-	3/7/7/13	-
2	GOL	B	802	-	-	0/4/4/4	-
2	GOL	A	801	-	-	2/4/4/4	-

There are no bond length outliers.

There are no bond angle outliers.

There are no chirality outliers.

All (12) torsion outliers are listed below:

Mol	Chain	Res	Type	Atoms
2	A	801	GOL	O1-C1-C2-O2
2	A	801	GOL	O1-C1-C2-C3
2	B	801	GOL	O1-C1-C2-C3
2	B	801	GOL	C1-C2-C3-O3
2	B	801	GOL	O1-C1-C2-O2
3	B	803	1PE	C24-C14-OH5-C25
3	A	802	1PE	C13-C23-OH3-C22
3	B	803	1PE	C14-C24-OH4-C13
3	A	802	1PE	C12-C22-OH3-C23
2	B	801	GOL	O2-C2-C3-O3
3	A	802	1PE	OH4-C13-C23-OH3
3	B	803	1PE	C23-C13-OH4-C24

There are no ring outliers.

No monomer is involved in short contacts.

4.7 Other polymers

There are no such residues in this entry.

4.8 Polymer linkage issues

There are no chain breaks in this entry.

5 Fit of model and data [i](#)

5.1 Protein, DNA and RNA chains [i](#)

EDS failed to run properly - this section is therefore empty.

5.2 Non-standard residues in protein, DNA, RNA chains [i](#)

EDS failed to run properly - this section is therefore empty.

5.3 Carbohydrates [i](#)

EDS failed to run properly - this section is therefore empty.

5.4 Ligands [i](#)

EDS failed to run properly - this section is therefore empty.

5.5 Other polymers [i](#)

EDS failed to run properly - this section is therefore empty.