



## Full wwPDB EM Validation Report ⓘ

Nov 20, 2022 – 01:42 PM EST

PDB ID : 7MI5  
EMDB ID : EMD-23840  
Title : Asymmetrical PAM-Non PAM prespacer bound Cas4/Cas1/Cas2 complex  
Authors : Hu, C.Y.; Ke, A.K.  
Deposited on : 2021-04-16  
Resolution : 3.57 Å (reported)

This is a Full wwPDB EM Validation Report for a publicly released PDB entry.

We welcome your comments at [validation@mail.wwpdb.org](mailto:validation@mail.wwpdb.org)

A user guide is available at

<https://www.wwpdb.org/validation/2017/EMValidationReportHelp>

with specific help available everywhere you see the ⓘ symbol.

The types of validation reports are described at

<http://www.wwpdb.org/validation/2017/FAQs#types>.

---

The following versions of software and data (see [references ⓘ](#)) were used in the production of this report:

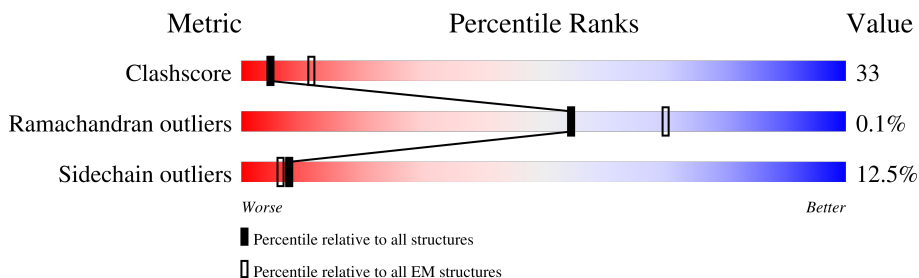
EMDB validation analysis : 0.0.1.dev43  
Mogul : 1.8.5 (274361), CSD as541be (2020)  
MolProbity : 4.02b-467  
buster-report : 1.1.7 (2018)  
Percentile statistics : 20191225.v01 (using entries in the PDB archive December 25th 2019)  
MapQ : 1.9.9  
Ideal geometry (proteins) : Engh & Huber (2001)  
Ideal geometry (DNA, RNA) : Parkinson et al. (1996)  
Validation Pipeline (wwPDB-VP) : 2.31.2

# 1 Overall quality at a glance

The following experimental techniques were used to determine the structure:  
*ELECTRON MICROSCOPY*

The reported resolution of this entry is 3.57 Å.

Percentile scores (ranging between 0-100) for global validation metrics of the entry are shown in the following graphic. The table shows the number of entries on which the scores are based.



Metric	Whole archive (#Entries)	EM structures (#Entries)
Clashscore	158937	4297
Ramachandran outliers	154571	4023
Sidechain outliers	154315	3826

The table below summarises the geometric issues observed across the polymeric chains and their fit to the map. The red, orange, yellow and green segments of the bar indicate the fraction of residues that contain outliers for  $\geq 3$ , 2, 1 and 0 types of geometric quality criteria respectively. A grey segment represents the fraction of residues that are not modelled. The numeric value for each fraction is indicated below the corresponding segment, with a dot representing fractions  $\leq 5\%$ . The upper red bar (where present) indicates the fraction of residues that have poor fit to the EM map (all-atom inclusion  $< 40\%$ ). The numeric value is given above the bar.

Mol	Chain	Length	Quality of chain
1	A	559	
1	B	559	
1	C	559	
1	D	559	
2	E	95	
2	F	95	
3	G	37	
4	H	37	

## 2 Entry composition [i](#)

There are 6 unique types of molecules in this entry. The entry contains 15469 atoms, of which 0 are hydrogens and 0 are deuteriums.

In the tables below, the AltConf column contains the number of residues with at least one atom in alternate conformation and the Trace column contains the number of residues modelled with at most 2 atoms.

- Molecule 1 is a protein called CRISPR-associated exonuclease Cas4/endonuclease Cas1 fusion.

Mol	Chain	Residues	Atoms					AltConf	Trace
			Total	C	N	O	S		
1	A	553	Total	C	N	O	S	0	0
			4347	2737	798	787	25		
1	B	340	Total	C	N	O	S	0	0
			2711	1710	503	482	16		
1	C	362	Total	C	N	O	S	0	0
			2887	1824	533	514	16		
1	D	340	Total	C	N	O	S	0	0
			2711	1710	503	482	16		

- Molecule 2 is a protein called CRISPR-associated endoribonuclease Cas2.

Mol	Chain	Residues	Atoms					AltConf	Trace
			Total	C	N	O	S		
2	E	95	Total	C	N	O	S	0	0
			786	504	145	132	5		
2	F	95	Total	C	N	O	S	0	0
			786	504	145	132	5		

- Molecule 3 is a DNA chain called DNA (26-MER).

Mol	Chain	Residues	Atoms					AltConf	Trace
			Total	C	N	O	P		
3	G	26	Total	C	N	O	P	0	0
			529	251	97	155	26		

- Molecule 4 is a DNA chain called DNA (34-MER).

Mol	Chain	Residues	Atoms					AltConf	Trace
			Total	C	N	O	P		
4	H	34	Total	C	N	O	P	0	0
			698	333	123	208	34		

- Molecule 5 is IRON/SULFUR CLUSTER (three-letter code: SF4) (formula: Fe<sub>4</sub>S<sub>4</sub>) (labeled as "Ligand of Interest" by depositor).



Mol	Chain	Residues	Atoms			AltConf
5	A	1	Total	Fe	S	0
			8	4	4	

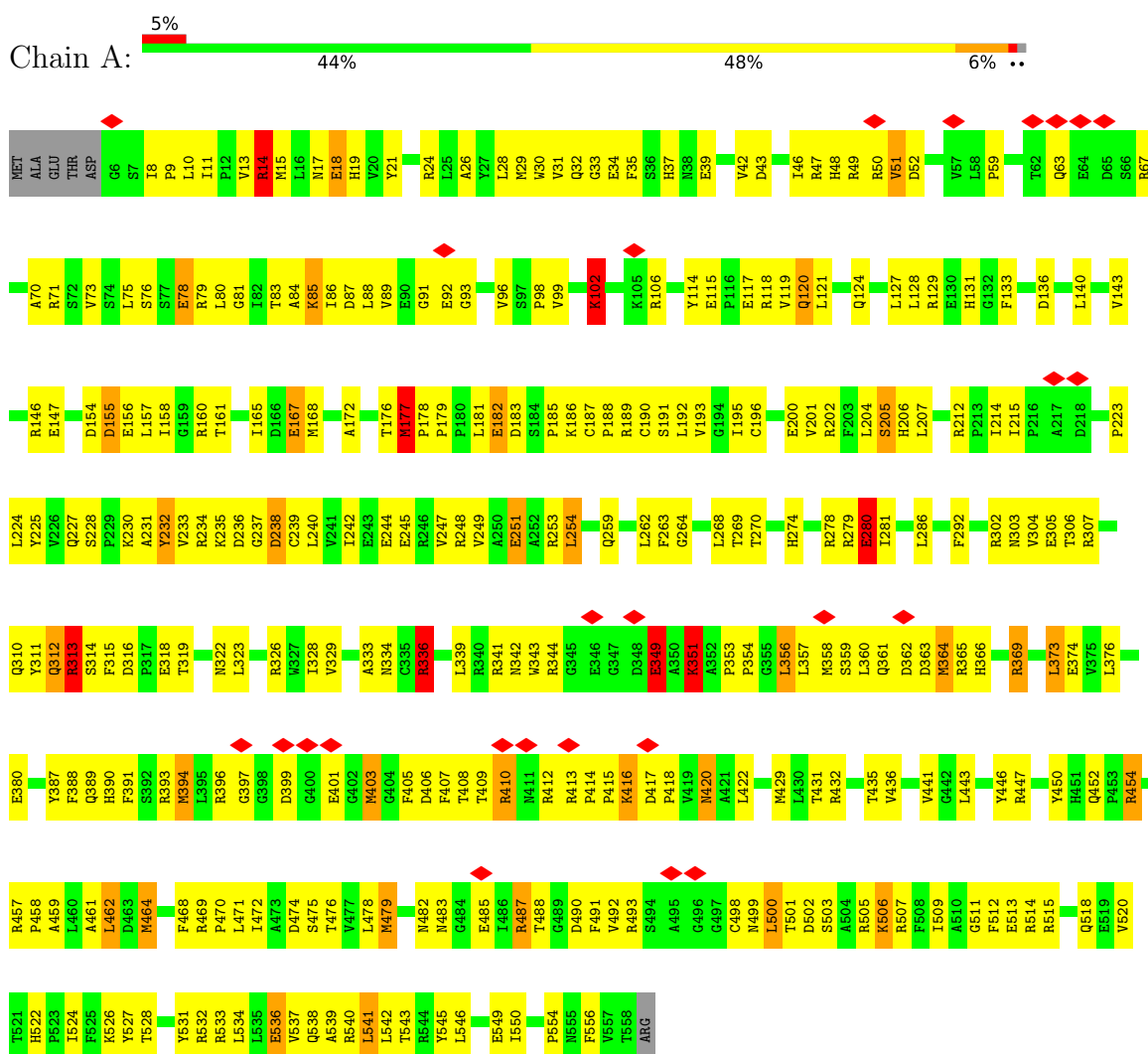
- Molecule 6 is MANGANESE (II) ION (three-letter code: MN) (formula: Mn).

Mol	Chain	Residues	Atoms		AltConf
6	A	1	Total	Mn	0
			1	1	
6	B	1	Total	Mn	0
			1	1	
6	D	1	Total	Mn	0
			1	1	
6	E	1	Total	Mn	0
			1	1	
6	F	1	Total	Mn	0
			1	1	
6	H	1	Total	Mn	0
			1	1	

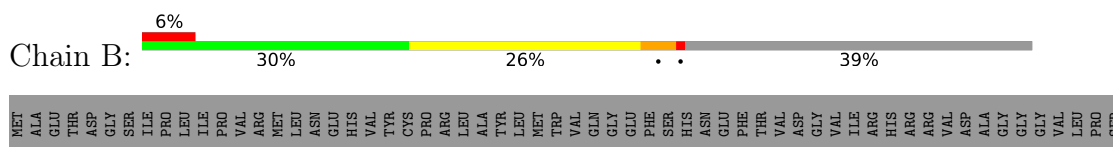
### 3 Residue-property plots [i](#)

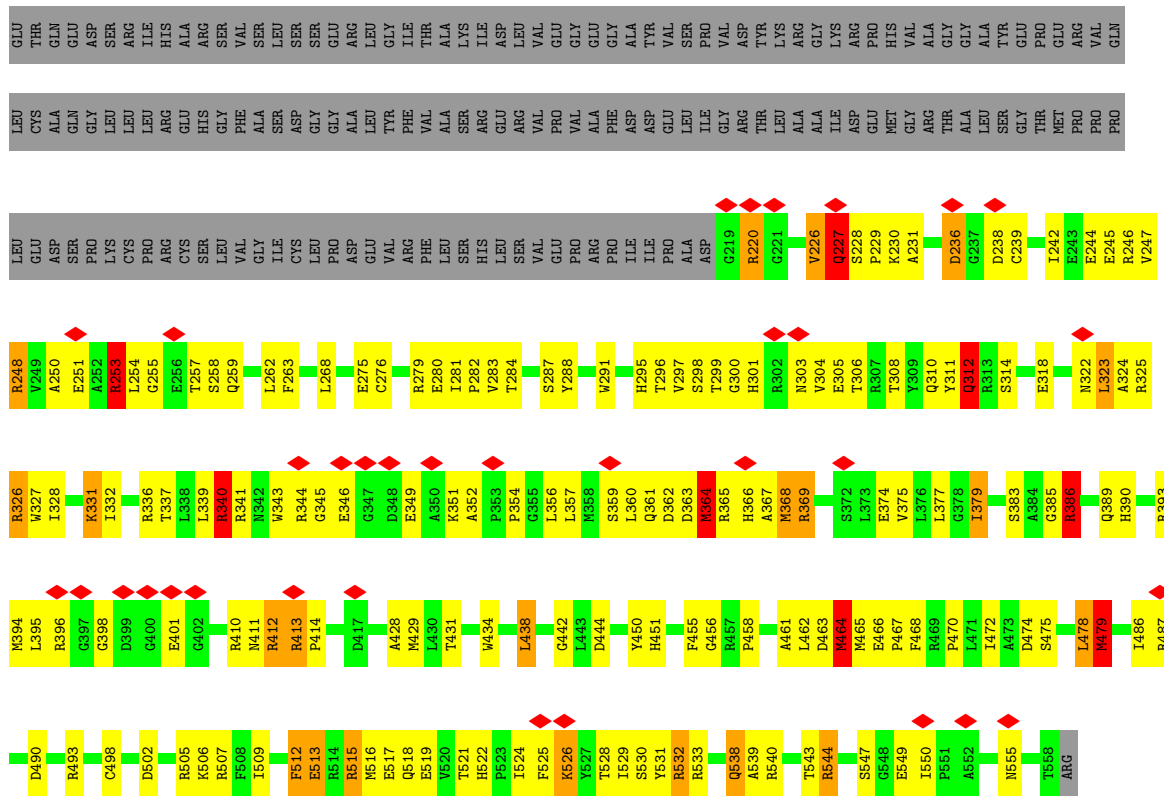
These plots are drawn for all protein, RNA, DNA and oligosaccharide chains in the entry. The first graphic for a chain summarises the proportions of the various outlier classes displayed in the second graphic. The second graphic shows the sequence view annotated by issues in geometry and atom inclusion in map density. Residues are color-coded according to the number of geometric quality criteria for which they contain at least one outlier: green = 0, yellow = 1, orange = 2 and red = 3 or more. A red diamond above a residue indicates a poor fit to the EM map for this residue (all-atom inclusion < 40%). Stretches of 2 or more consecutive residues without any outlier are shown as a green connector. Residues present in the sample, but not in the model, are shown in grey.

- Molecule 1: CRISPR-associated exonuclease Cas4/endonuclease Cas1 fusion

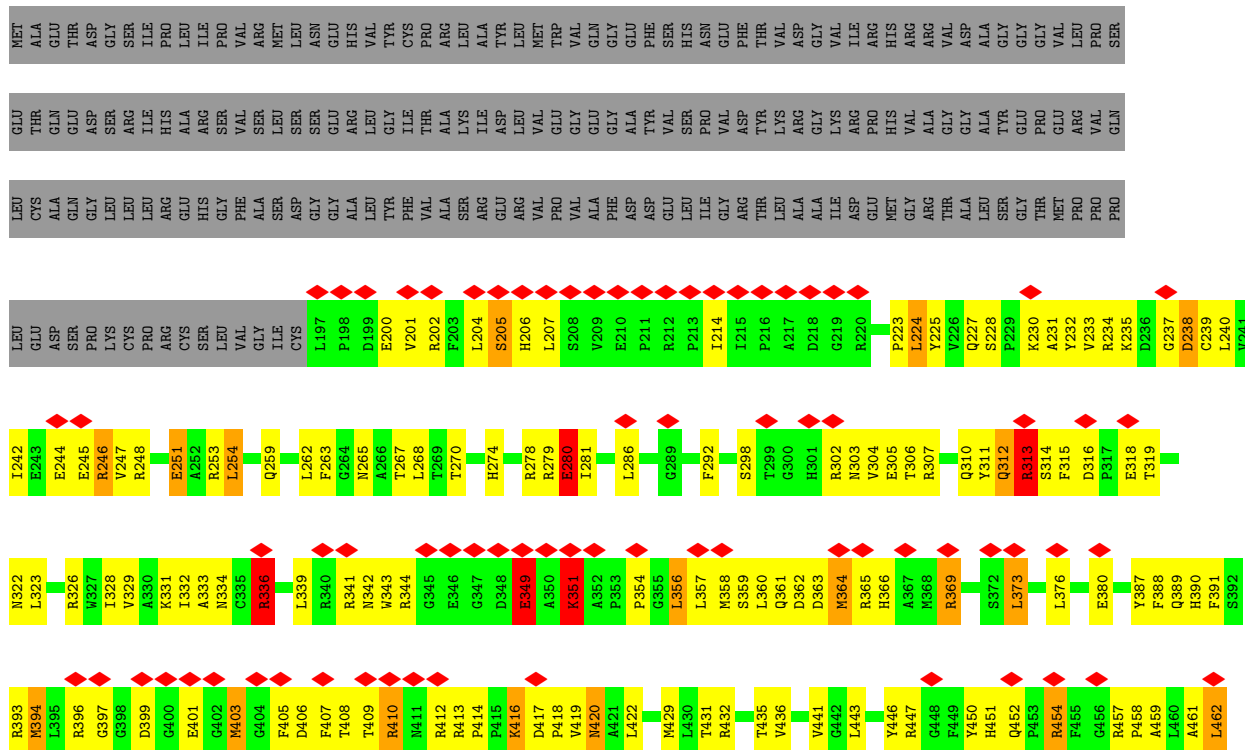
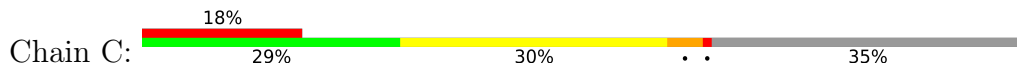


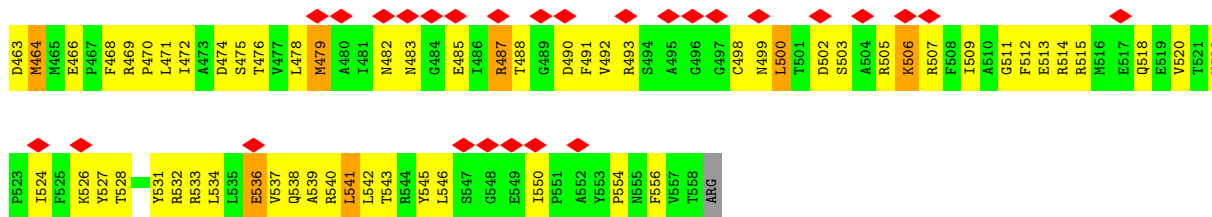
- Molecule 1: CRISPR-associated exonuclease Cas4/endonuclease Cas1 fusion



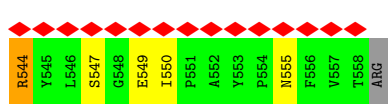
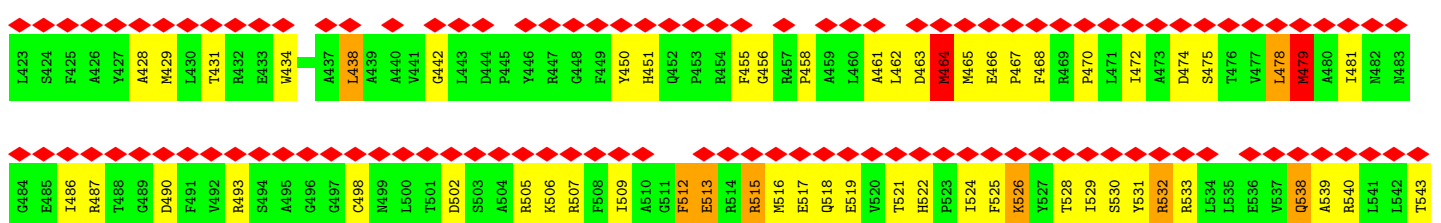
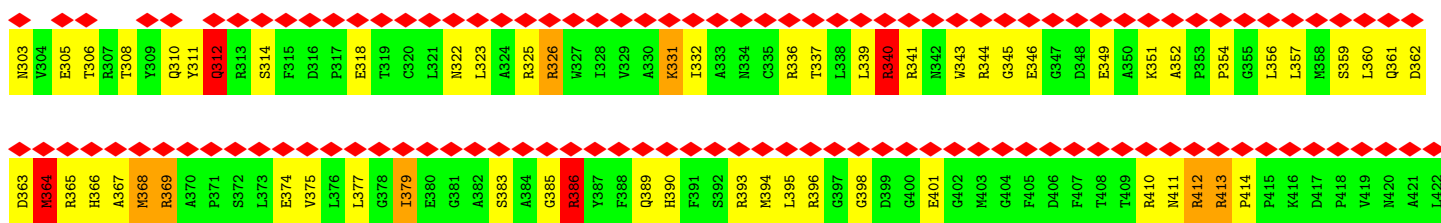
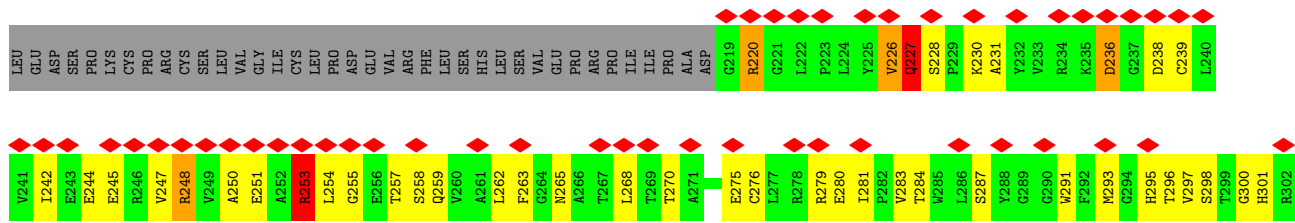
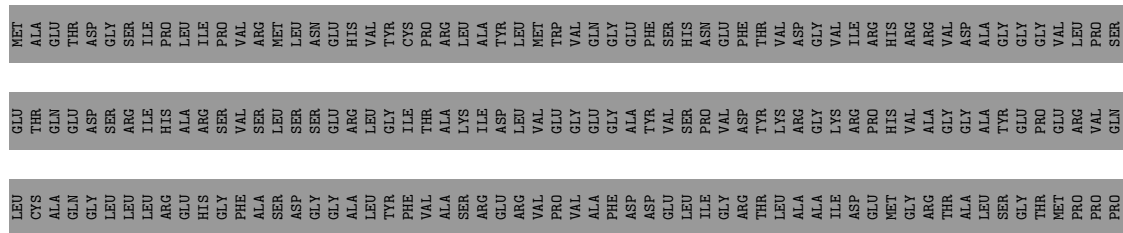
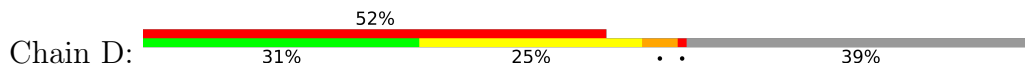


● Molecule 1: CRISPR-associated exonuclease Cas4/endonuclease Cas1 fusion





• Molecule 1: CRISPR-associated exonuclease Cas4/endonuclease Cas1 fusion



• Molecule 2: CRISPR-associated endoribonuclease Cas2







## 4 Experimental information

Property	Value	Source
EM reconstruction method	SINGLE PARTICLE	Depositor
Imposed symmetry	POINT, Not provided	
Number of particles used	80000	Depositor
Resolution determination method	FSC 0.143 CUT-OFF	Depositor
CTF correction method	PHASE FLIPPING AND AMPLITUDE CORRECTION	Depositor
Microscope	TFS TALOS	Depositor
Voltage (kV)	200	Depositor
Electron dose ( $e^-/\text{\AA}^2$ )	50	Depositor
Minimum defocus (nm)	1500	Depositor
Maximum defocus (nm)	Not provided	
Magnification	Not provided	
Image detector	GATAN K3 BIOQUANTUM (6k x 4k)	Depositor
Maximum map value	2.716	Depositor
Minimum map value	-0.824	Depositor
Average map value	0.001	Depositor
Map value standard deviation	0.049	Depositor
Recommended contour level	0.264	Depositor
Map size (Å)	270.6, 270.6, 270.6	wwPDB
Map dimensions	220, 220, 220	wwPDB
Map angles (°)	90.0, 90.0, 90.0	wwPDB
Pixel spacing (Å)	1.23, 1.23, 1.23	Depositor

## 5 Model quality i

### 5.1 Standard geometry i

Bond lengths and bond angles in the following residue types are not validated in this section: MN, SF4

The Z score for a bond length (or angle) is the number of standard deviations the observed value is removed from the expected value. A bond length (or angle) with  $|Z| > 5$  is considered an outlier worth inspection. RMSZ is the root-mean-square of all Z scores of the bond lengths (or angles).

Mol	Chain	Bond lengths		Bond angles	
		RMSZ	# $ Z  > 5$	RMSZ	# $ Z  > 5$
1	A	0.47	0/4448	0.71	10/6026 (0.2%)
1	B	0.48	0/2774	0.92	15/3752 (0.4%)
1	C	0.48	0/2956	0.71	5/4003 (0.1%)
1	D	0.48	0/2774	0.91	15/3752 (0.4%)
2	E	0.54	0/802	0.71	0/1080
2	F	0.54	0/802	0.71	0/1080
3	G	0.90	0/592	0.85	0/910
4	H	1.13	2/781 (0.3%)	1.01	0/1204
All	All	0.55	2/15929 (0.0%)	0.81	45/21807 (0.2%)

Chiral center outliers are detected by calculating the chiral volume of a chiral center and verifying if the center is modelled as a planar moiety or with the opposite hand. A planarity outlier is detected by checking planarity of atoms in a peptide group, atoms in a mainchain group or atoms of a sidechain that are expected to be planar.

Mol	Chain	#Chirality outliers	#Planarity outliers
1	A	0	1
1	B	0	1
1	C	0	1
1	D	0	1
2	E	0	1
2	F	0	1
All	All	0	6

All (2) bond length outliers are listed below:

Mol	Chain	Res	Type	Atoms	Z	Observed(Å)	Ideal(Å)
4	H	20	DG	C1'-N9	-7.71	1.36	1.47
4	H	21	DA	C1'-N9	-7.11	1.37	1.47

All (45) bond angle outliers are listed below:

Mol	Chain	Res	Type	Atoms	Z	Observed(°)	Ideal(°)
1	D	364	MET	CA-CB-CG	15.50	139.65	113.30
1	B	364	MET	CA-CB-CG	15.48	139.62	113.30
1	D	479	MET	CA-CB-CG	14.03	137.14	113.30
1	B	479	MET	CA-CB-CG	14.02	137.14	113.30
1	B	479	MET	CB-CG-SD	10.77	144.70	112.40
1	D	479	MET	CB-CG-SD	10.74	144.63	112.40
1	B	364	MET	CB-CG-SD	9.80	141.81	112.40
1	D	364	MET	CB-CG-SD	9.80	141.79	112.40
1	B	253	ARG	NE-CZ-NH1	8.04	124.32	120.30
1	C	313	ARG	CG-CD-NE	8.01	128.62	111.80
1	A	313	ARG	CG-CD-NE	8.01	128.61	111.80
1	D	253	ARG	NE-CZ-NH1	7.90	124.25	120.30
1	C	336	ARG	CA-CB-CG	7.78	130.51	113.40
1	A	336	ARG	CA-CB-CG	7.77	130.49	113.40
1	A	349	GLU	CA-CB-CG	7.36	129.58	113.40
1	C	349	GLU	CA-CB-CG	7.35	129.58	113.40
1	A	177	MET	CB-CG-SD	7.02	133.46	112.40
1	B	386	ARG	NE-CZ-NH2	6.89	123.74	120.30
1	D	386	ARG	NE-CZ-NH2	6.86	123.73	120.30
1	A	280	GLU	CA-CB-CG	6.80	128.36	113.40
1	C	280	GLU	CA-CB-CG	6.79	128.33	113.40
1	A	177	MET	CG-SD-CE	6.23	110.17	100.20
1	A	177	MET	CA-CB-CG	6.07	123.61	113.30
1	D	478	LEU	CA-CB-CG	6.01	129.12	115.30
1	A	102	LYS	CB-CG-CD	5.99	127.17	111.60
1	B	478	LEU	CA-CB-CG	5.98	129.06	115.30
1	B	364	MET	N-CA-CB	5.94	121.29	110.60
1	D	312	GLN	CA-CB-CG	5.93	126.45	113.40
1	B	312	GLN	CA-CB-CG	5.93	126.44	113.40
1	D	364	MET	N-CA-CB	5.92	121.25	110.60
1	A	14	ARG	CB-CG-CD	5.84	126.78	111.60
1	B	227	GLN	CA-CB-CG	5.82	126.20	113.40
1	D	227	GLN	CA-CB-CG	5.81	126.18	113.40
1	A	351	LYS	CB-CG-CD	5.69	126.39	111.60
1	C	351	LYS	CB-CG-CD	5.68	126.37	111.60
1	D	479	MET	N-CA-CB	5.51	120.53	110.60
1	B	479	MET	N-CA-CB	5.51	120.52	110.60
1	B	340	ARG	NE-CZ-NH1	-5.28	117.66	120.30
1	D	464	MET	CB-CG-SD	5.27	128.22	112.40
1	B	464	MET	CB-CG-SD	5.26	128.19	112.40
1	D	340	ARG	NE-CZ-NH1	-5.24	117.68	120.30
1	B	253	ARG	CA-CB-CG	5.23	124.91	113.40
1	D	253	ARG	CA-CB-CG	5.23	124.91	113.40

*Continued on next page...*

Continued from previous page...

Mol	Chain	Res	Type	Atoms	Z	Observed(°)	Ideal(°)
1	B	253	ARG	NE-CZ-NH2	-5.21	117.69	120.30
1	D	253	ARG	NE-CZ-NH2	-5.10	117.75	120.30

There are no chirality outliers.

All (6) planarity outliers are listed below:

Mol	Chain	Res	Type	Group
1	A	312	GLN	Peptide
1	B	412	ARG	Peptide
1	C	312	GLN	Peptide
1	D	412	ARG	Peptide
2	E	52	ILE	Peptide
2	F	52	ILE	Peptide

## 5.2 Too-close contacts [i](#)

In the following table, the Non-H and H(model) columns list the number of non-hydrogen atoms and hydrogen atoms in the chain respectively. The H(added) column lists the number of hydrogen atoms added and optimized by MolProbity. The Clashes column lists the number of clashes within the asymmetric unit, whereas Symm-Clashes lists symmetry-related clashes.

Mol	Chain	Non-H	H(model)	H(added)	Clashes	Symm-Clashes
1	A	4347	0	4313	304	0
1	B	2711	0	2692	193	0
1	C	2887	0	2870	178	0
1	D	2711	0	2692	155	0
2	E	786	0	812	65	0
2	F	786	0	812	65	0
3	G	529	0	292	82	0
4	H	698	0	386	100	0
5	A	8	0	0	1	0
6	A	1	0	0	0	0
6	B	1	0	0	0	0
6	D	1	0	0	0	0
6	E	1	0	0	0	0
6	F	1	0	0	0	0
6	H	1	0	0	0	0
All	All	15469	0	14869	1000	0

The all-atom clashscore is defined as the number of clashes found per 1000 atoms (including hydrogen atoms). The all-atom clashscore for this structure is 33.

All (1000) close contacts within the same asymmetric unit are listed below, sorted by their clash magnitude.

Atom-1	Atom-2	Interatomic distance (Å)	Clash overlap (Å)
3:G:8:DG:C2	4:H:20:DG:C2	1.93	1.54
3:G:8:DG:N2	4:H:20:DG:N3	1.66	1.39
1:C:201:VAL:O	1:C:205:SER:HB3	1.28	1.26
1:A:201:VAL:O	1:A:205:SER:HB3	1.28	1.25
3:G:8:DG:N2	4:H:20:DG:C4	2.06	1.24
1:B:230:LYS:NZ	4:H:24:DG:H1	1.43	1.13
1:A:237:GLY:H	3:G:6:DT:P	1.76	1.08
3:G:8:DG:N3	4:H:20:DG:N2	2.01	1.07
1:B:288:TYR:CD2	4:H:24:DG:H2"	1.94	1.03
1:A:237:GLY:N	3:G:6:DT:OP1	1.92	1.02
1:B:230:LYS:NZ	4:H:24:DG:N1	2.04	1.02
3:G:8:DG:N2	4:H:20:DG:C2	2.13	1.01
1:B:366:HIS:HA	1:B:369:ARG:HD2	1.44	1.00
1:B:230:LYS:NZ	4:H:24:DG:C6	2.31	0.99
1:D:366:HIS:HA	1:D:369:ARG:HD2	1.44	0.99
1:D:253:ARG:HG2	1:D:253:ARG:HH11	1.26	0.98
1:B:230:LYS:NZ	4:H:24:DG:O6	1.97	0.97
3:G:8:DG:C2	4:H:20:DG:N1	2.31	0.97
3:G:8:DG:N1	4:H:20:DG:N1	2.11	0.97
1:B:253:ARG:HH11	1:B:253:ARG:HG2	1.26	0.97
1:A:236:ASP:HA	3:G:6:DT:OP2	1.65	0.94
1:B:351:LYS:NZ	1:B:352:ALA:O	2.02	0.93
1:D:239:CYS:HA	1:D:253:ARG:HA	1.51	0.93
1:A:232:TYR:O	1:A:242:ILE:HD12	1.69	0.92
1:B:239:CYS:HA	1:B:253:ARG:HA	1.51	0.92
3:G:8:DG:N1	4:H:20:DG:C6	2.38	0.92
1:A:24:ARG:HA	1:A:178:PRO:HG2	1.52	0.92
1:D:351:LYS:NZ	1:D:352:ALA:O	2.02	0.91
3:G:14:DC:N3	4:H:13:DG:N1	2.18	0.91
3:G:13:DG:N1	4:H:14:DC:N3	2.19	0.90
1:D:343:TRP:NE1	1:D:349:GLU:O	2.05	0.90
1:B:360:LEU:O	1:B:363:ASP:N	2.05	0.89
3:G:8:DG:N3	4:H:20:DG:C2	2.34	0.89
1:B:343:TRP:NE1	1:B:349:GLU:O	2.05	0.89
1:B:544:ARG:HG2	1:B:544:ARG:HH11	1.38	0.89
1:A:182:GLU:OE1	1:A:202:ARG:NH1	2.05	0.89
1:A:155:ASP:OD1	1:A:155:ASP:N	2.07	0.88
1:D:360:LEU:O	1:D:363:ASP:N	2.05	0.88
1:C:246:ARG:N	1:C:246:ARG:HD2	1.89	0.88
1:C:349:GLU:N	1:C:349:GLU:OE1	2.06	0.87

*Continued on next page...*

*Continued from previous page...*

Atom-1	Atom-2	Interatomic distance (Å)	Clash overlap (Å)
1:A:121:LEU:HA	1:A:124:GLN:HE21	1.38	0.87
1:D:544:ARG:HG2	1:D:544:ARG:HH11	1.38	0.87
1:A:349:GLU:OE1	1:A:349:GLU:N	2.06	0.87
1:A:409:THR:OG1	1:A:420:ASN:ND2	2.09	0.86
1:C:409:THR:OG1	1:C:420:ASN:ND2	2.09	0.85
3:G:20:DC:N4	4:H:7:DG:O6	2.08	0.85
1:C:493:ARG:NH2	1:C:498:CYS:SG	2.50	0.85
1:A:493:ARG:NH2	1:A:498:CYS:SG	2.50	0.85
1:C:479:MET:HE2	1:C:479:MET:HA	1.58	0.85
1:A:70:ALA:HB3	1:A:89:VAL:HB	1.59	0.84
1:A:479:MET:HE2	1:A:479:MET:HA	1.57	0.84
3:G:8:DG:C2	4:H:20:DG:N2	2.42	0.84
3:G:19:DG:N1	4:H:8:DC:N3	2.26	0.84
1:D:293:MET:SD	3:G:26:DC:N4	2.52	0.83
1:B:229:PRO:HB2	4:H:24:DG:C2	2.15	0.82
1:B:230:LYS:CE	4:H:24:DG:H1	1.91	0.82
1:C:410:ARG:HA	1:C:410:ARG:NE	1.95	0.82
1:A:410:ARG:NE	1:A:410:ARG:HA	1.95	0.81
1:A:238:ASP:OD1	1:A:238:ASP:N	2.13	0.81
1:A:334:ASN:HD22	1:A:471:LEU:HD13	1.46	0.81
3:G:14:DC:O2	4:H:13:DG:N2	2.08	0.81
1:C:334:ASN:HD22	1:C:471:LEU:HD13	1.46	0.81
1:C:238:ASP:OD1	1:C:238:ASP:N	2.13	0.80
2:F:18:ARG:NH1	4:H:8:DC:OP2	2.15	0.79
4:H:10:DG:H2'	4:H:11:DA:C8	2.18	0.79
1:A:39:GLU:OE1	2:E:42:ARG:NH1	2.16	0.79
3:G:18:DA:N6	4:H:9:DT:O4	2.16	0.79
1:D:253:ARG:O	1:D:253:ARG:NH1	2.17	0.78
1:B:227:GLN:OE1	1:B:227:GLN:N	2.16	0.78
1:B:253:ARG:NH1	1:B:253:ARG:O	2.17	0.78
1:A:416:LYS:HE2	1:A:416:LYS:HA	1.65	0.78
1:A:443:LEU:HD21	1:A:543:THR:HG22	1.66	0.77
1:C:416:LYS:HE2	1:C:416:LYS:HA	1.65	0.77
1:C:443:LEU:HD21	1:C:543:THR:HG22	1.66	0.77
2:F:17:TRP:NE1	3:G:16:DT:OP2	2.16	0.77
2:F:32:GLN:HB3	2:F:35:VAL:HB	1.67	0.77
1:D:227:GLN:OE1	1:D:227:GLN:N	2.16	0.76
2:E:32:GLN:HB3	2:E:35:VAL:HB	1.68	0.76
3:G:14:DC:N4	4:H:13:DG:O6	2.17	0.76
1:D:544:ARG:HD2	1:D:550:ILE:HG23	1.67	0.76
1:B:544:ARG:HD2	1:B:550:ILE:HG23	1.67	0.76

*Continued on next page...*

*Continued from previous page...*

Atom-1	Atom-2	Interatomic distance (Å)	Clash overlap (Å)
1:C:202:ARG:HH21	1:C:207:LEU:HB3	1.51	0.75
3:G:10:DG:H2'	3:G:11:DA:C8	2.21	0.75
3:G:19:DG:O6	4:H:8:DC:N4	2.18	0.75
3:G:12:DG:H5'	3:G:12:DG:H8	1.51	0.75
1:A:354:PRO:HA	1:A:357:LEU:HG	1.69	0.75
3:G:13:DG:O6	4:H:14:DC:N4	2.19	0.75
1:A:202:ARG:HH21	1:A:207:LEU:HB3	1.51	0.74
1:D:513:GLU:HA	1:D:513:GLU:OE1	1.85	0.74
1:A:129:ARG:HH11	1:A:136:ASP:HA	1.53	0.74
1:C:354:PRO:HA	1:C:357:LEU:HG	1.69	0.74
1:B:513:GLU:OE1	1:B:513:GLU:HA	1.85	0.74
2:F:12:ARG:NH2	3:G:14:DC:OP1	2.19	0.74
1:C:328:ILE:HG21	1:C:376:LEU:HD21	1.70	0.74
1:A:540:ARG:O	1:A:543:THR:OG1	2.05	0.74
1:B:259:GLN:HE22	1:B:540:ARG:NH2	1.86	0.74
1:C:540:ARG:O	1:C:543:THR:OG1	2.05	0.73
3:G:2:DA:N3	3:G:2:DA:H2'	2.02	0.73
3:G:4:DC:H42	4:H:23:DG:H1	1.36	0.73
1:A:14:ARG:NH2	4:H:33:DA:OP2	2.21	0.73
1:A:120:GLN:O	1:A:124:GLN:HG3	1.89	0.73
1:B:308:THR:O	1:B:312:GLN:NE2	2.22	0.73
1:D:308:THR:O	1:D:312:GLN:NE2	2.22	0.73
2:F:41:ASP:OD1	2:F:42:ARG:N	2.20	0.73
1:C:452:GLN:HB2	1:C:454:ARG:HH22	1.53	0.73
1:A:328:ILE:HG21	1:A:376:LEU:HD21	1.69	0.73
1:A:336:ARG:NH1	1:A:360:LEU:HB2	2.04	0.72
1:A:452:GLN:HB2	1:A:454:ARG:HH22	1.53	0.72
1:B:230:LYS:CE	4:H:24:DG:N1	2.50	0.72
1:A:441:VAL:HG23	1:A:443:LEU:HD23	1.70	0.72
1:C:231:ALA:HB1	1:C:242:ILE:HD11	1.72	0.72
1:C:502:ASP:OD1	1:C:503:SER:N	2.21	0.72
1:C:441:VAL:HG23	1:C:443:LEU:HD23	1.70	0.72
1:A:231:ALA:HB1	1:A:242:ILE:HD11	1.72	0.72
1:B:230:LYS:HZ1	4:H:24:DG:H1	0.76	0.72
1:D:386:ARG:HG3	1:D:386:ARG:HH21	1.54	0.72
1:A:502:ASP:OD1	1:A:503:SER:N	2.21	0.72
1:C:336:ARG:NH1	1:C:360:LEU:HB2	2.04	0.72
1:D:259:GLN:HE22	1:D:540:ARG:NH2	1.86	0.72
2:E:4:LEU:HD13	2:E:74:VAL:HG11	1.71	0.72
1:C:223:PRO:HD2	2:F:92:ALA:HB2	1.70	0.71
3:G:13:DG:N2	4:H:14:DC:O2	2.13	0.71

*Continued on next page...*

*Continued from previous page...*

Atom-1	Atom-2	Interatomic distance (Å)	Clash overlap (Å)
1:A:336:ARG:NH2	1:A:357:LEU:HA	2.05	0.71
1:B:236:ASP:N	1:B:239:CYS:O	2.19	0.71
1:B:248:ARG:NH1	1:B:251:GLU:OE2	2.22	0.71
1:C:336:ARG:NH2	1:C:357:LEU:HA	2.05	0.71
2:F:4:LEU:HD13	2:F:74:VAL:HG11	1.71	0.71
1:B:386:ARG:HH21	1:B:386:ARG:HG3	1.54	0.71
2:E:41:ASP:OD1	2:E:42:ARG:N	2.20	0.71
1:B:451:HIS:ND1	1:B:463:ASP:OD1	2.24	0.71
2:E:17:TRP:NE1	4:H:16:DT:OP2	2.24	0.71
2:E:13:ASN:HD21	2:E:15:ARG:HB2	1.56	0.70
1:A:14:ARG:HH12	4:H:32:DG:H3'	1.56	0.70
1:C:227:GLN:HB2	1:C:505:ARG:HH22	1.57	0.70
1:B:230:LYS:NZ	3:G:3:DC:N3	2.38	0.70
2:F:13:ASN:HD21	2:F:15:ARG:HB2	1.56	0.70
1:A:227:GLN:HB2	1:A:505:ARG:HH22	1.57	0.70
1:D:325:ARG:NH1	1:D:368:MET:O	2.25	0.70
1:A:129:ARG:NH1	1:A:136:ASP:OD1	2.25	0.69
1:B:340:ARG:NH1	1:B:357:LEU:HG	2.07	0.69
1:D:340:ARG:NH1	1:D:357:LEU:HG	2.07	0.69
1:A:14:ARG:NH1	4:H:32:DG:H3'	2.06	0.69
1:B:325:ARG:NH1	1:B:368:MET:O	2.25	0.69
1:D:451:HIS:ND1	1:D:463:ASP:OD1	2.24	0.69
4:H:10:DG:H2'	4:H:11:DA:H8	1.58	0.69
1:C:235:LYS:NZ	1:C:237:GLY:O	2.24	0.69
1:D:248:ARG:NH1	1:D:251:GLU:OE2	2.22	0.68
1:D:236:ASP:N	1:D:239:CYS:O	2.20	0.68
2:E:16:ARG:NH2	2:E:61:ASP:OD2	2.26	0.68
2:F:16:ARG:NH2	2:F:61:ASP:OD2	2.26	0.68
1:A:233:VAL:HG22	1:A:242:ILE:HD13	1.76	0.68
1:A:314:SER:OG	1:A:447:ARG:NE	2.25	0.68
1:A:333:ALA:O	1:A:336:ARG:HB2	1.93	0.68
1:C:333:ALA:O	1:C:336:ARG:HB2	1.93	0.68
1:D:253:ARG:HG2	1:D:253:ARG:NH1	2.01	0.68
1:C:225:TYR:HB2	2:F:94:ILE:HA	1.74	0.68
4:H:3:DC:H2'	4:H:4:DG:C8	2.28	0.68
1:C:246:ARG:HD2	1:C:246:ARG:H	1.56	0.68
2:F:9:TYR:OH	3:G:16:DT:OP1	2.11	0.68
1:A:119:VAL:HG13	1:A:161:THR:HG22	1.76	0.68
1:D:303:ASN:O	1:D:306:THR:OG1	2.12	0.68
1:A:237:GLY:N	3:G:6:DT:P	2.60	0.67
1:B:464:MET:HE3	1:B:464:MET:HA	1.76	0.67

*Continued on next page...*



*Continued from previous page...*

Atom-1	Atom-2	Interatomic distance (Å)	Clash overlap (Å)
1:A:102:LYS:HA	1:A:102:LYS:CE	2.24	0.67
1:B:303:ASN:O	1:B:306:THR:OG1	2.12	0.67
1:C:394:MET:HE1	1:C:478:LEU:HD13	1.77	0.67
1:D:322:ASN:O	1:D:326:ARG:HG2	1.95	0.67
3:G:8:DG:C4	4:H:20:DG:N2	2.63	0.67
1:B:322:ASN:O	1:B:326:ARG:HG2	1.95	0.66
1:B:538:GLN:HA	1:B:538:GLN:OE1	1.95	0.66
1:C:201:VAL:O	1:C:205:SER:CB	2.24	0.66
1:C:524:ILE:O	1:C:526:LYS:NZ	2.28	0.66
1:A:24:ARG:NH1	1:A:549:GLU:OE2	2.29	0.66
1:A:524:ILE:O	1:A:526:LYS:NZ	2.28	0.66
1:D:227:GLN:H	1:D:227:GLN:CD	1.99	0.66
1:C:233:VAL:HG22	1:C:242:ILE:HD13	1.76	0.66
1:D:265:ASN:ND2	4:H:3:DC:H2''	2.10	0.66
2:E:10:ASP:CG	2:F:32:GLN:HE21	1.99	0.66
1:A:14:ARG:NH2	4:H:32:DG:O5'	2.29	0.66
1:C:351:LYS:CE	1:C:351:LYS:HA	2.25	0.66
3:G:25:DA:H3'	3:G:26:DC:O2	1.96	0.66
1:A:85:LYS:HG3	4:H:31:DT:H5'	1.77	0.66
1:A:351:LYS:HA	1:A:351:LYS:CE	2.25	0.66
3:G:12:DG:H5'	3:G:12:DG:C8	2.30	0.66
1:C:286:LEU:HD23	1:C:292:PHE:HA	1.78	0.66
1:C:336:ARG:HH22	1:C:357:LEU:HA	1.61	0.66
1:C:471:LEU:O	1:C:515:ARG:NH2	2.26	0.66
1:A:227:GLN:HB2	1:A:505:ARG:NH2	2.10	0.65
1:A:227:GLN:OE1	1:A:505:ARG:NH2	2.29	0.65
1:A:336:ARG:HH22	1:A:357:LEU:HA	1.61	0.65
1:D:502:ASP:HA	1:D:505:ARG:HG3	1.79	0.65
1:D:538:GLN:HA	1:D:538:GLN:OE1	1.95	0.65
1:A:286:LEU:HD23	1:A:292:PHE:HA	1.78	0.65
1:A:479:MET:O	1:A:483:ASN:ND2	2.28	0.65
1:B:502:ASP:HA	1:B:505:ARG:HG3	1.79	0.65
1:C:227:GLN:HB2	1:C:505:ARG:NH2	2.11	0.65
1:D:265:ASN:HD21	4:H:3:DC:H2''	1.61	0.65
1:D:220:ARG:NH1	1:D:257:THR:O	2.30	0.65
1:D:412:ARG:NH2	1:D:414:PRO:HD2	2.11	0.65
1:A:15:MET:HE3	1:A:30:TRP:HA	1.78	0.65
3:G:20:DC:N3	4:H:7:DG:N1	2.36	0.65
1:A:401:GLU:O	1:A:488:THR:OG1	2.15	0.65
1:C:227:GLN:OE1	1:C:505:ARG:NH2	2.29	0.65
3:G:19:DG:N2	4:H:8:DC:O2	2.24	0.65

*Continued on next page...*

*Continued from previous page...*

Atom-1	Atom-2	Interatomic distance (Å)	Clash overlap (Å)
1:B:412:ARG:NH2	1:B:414:PRO:HD2	2.11	0.65
1:A:542:LEU:O	1:A:546:LEU:HG	1.97	0.65
2:E:4:LEU:HB2	2:E:71:ALA:HB2	1.79	0.65
1:A:235:LYS:NZ	1:A:237:GLY:O	2.24	0.65
1:C:401:GLU:O	1:C:488:THR:OG1	2.15	0.65
1:A:468:PHE:HB3	1:A:472:ILE:HD12	1.78	0.64
1:C:542:LEU:O	1:C:546:LEU:HG	1.97	0.64
1:A:156:GLU:O	1:A:160:ARG:HG2	1.96	0.64
1:A:396:ARG:N	1:A:482:ASN:OD1	2.24	0.64
1:B:529:ILE:HG22	1:B:533:ARG:HE	1.63	0.64
1:D:220:ARG:HH12	1:D:281:ILE:HG12	1.62	0.64
1:D:529:ILE:HG22	1:D:533:ARG:HE	1.63	0.64
1:A:192:LEU:O	1:A:196:CYS:N	2.22	0.64
1:B:220:ARG:NH1	1:B:257:THR:O	2.30	0.64
1:C:468:PHE:HB3	1:C:472:ILE:HD12	1.78	0.64
2:E:10:ASP:OD2	2:F:32:GLN:NE2	2.30	0.64
1:A:17:ASN:HB2	1:A:120:GLN:OE1	1.98	0.64
1:A:487:ARG:N	1:A:490:ASP:OD2	2.26	0.64
1:B:311:TYR:O	1:B:314:SER:OG	2.13	0.64
1:A:471:LEU:O	1:A:515:ARG:NH2	2.26	0.64
1:B:287:SER:OG	4:H:25:DA:OP2	2.16	0.64
1:D:479:MET:HE2	1:D:479:MET:H	1.63	0.64
1:A:452:GLN:CB	1:A:454:ARG:HH22	2.11	0.64
1:A:234:ARG:HG3	3:G:5:DA:OP2	1.99	0.63
1:B:253:ARG:HG2	1:B:253:ARG:NH1	2.01	0.63
1:C:314:SER:OG	1:C:447:ARG:NE	2.25	0.63
1:C:452:GLN:CB	1:C:454:ARG:HH22	2.11	0.63
1:B:220:ARG:HH12	1:B:281:ILE:HG12	1.62	0.63
1:C:396:ARG:N	1:C:482:ASN:OD1	2.24	0.63
1:B:227:GLN:H	1:B:227:GLN:CD	1.99	0.63
1:A:50:ARG:HG3	1:A:51:VAL:HG22	1.80	0.63
1:B:374:GLU:OE1	1:B:374:GLU:N	2.29	0.63
1:A:31:VAL:HG13	1:B:455:PHE:CE1	2.34	0.63
1:C:479:MET:O	1:C:483:ASN:ND2	2.28	0.62
1:A:394:MET:HE1	1:A:478:LEU:HD13	1.81	0.62
1:B:505:ARG:HH12	4:H:27:DT:H2"	1.64	0.62
1:D:506:LYS:HA	1:D:509:ILE:HD12	1.81	0.62
1:D:362:ASP:OD1	1:D:365:ARG:NH2	2.33	0.62
2:F:4:LEU:HB2	2:F:71:ALA:HB2	1.79	0.62
3:G:8:DG:C6	4:H:20:DG:N1	2.68	0.62
1:B:259:GLN:HE22	1:B:540:ARG:HH22	1.48	0.62

*Continued on next page...*

*Continued from previous page...*

Atom-1	Atom-2	Interatomic distance (Å)	Clash overlap (Å)
1:B:479:MET:HE2	1:B:479:MET:H	1.65	0.62
1:A:190:CYS:SG	1:A:193:VAL:N	2.72	0.62
1:B:246:ARG:HD3	3:G:2:DA:C2	2.34	0.62
1:D:522:HIS:HB2	1:D:526:LYS:NZ	2.15	0.62
1:A:189:ARG:NH2	4:H:35:DT:OP1	2.32	0.62
1:B:288:TYR:CG	4:H:24:DG:H2''	2.34	0.62
1:D:464:MET:HE3	1:D:464:MET:HA	1.80	0.62
1:D:475:SER:O	1:D:478:LEU:N	2.33	0.62
2:E:62:HIS:ND1	2:F:83:LYS:HG2	2.15	0.62
1:A:52:ASP:HA	1:A:71:ARG:HD3	1.82	0.61
1:A:117:GLU:HG3	1:A:140:LEU:HD21	1.80	0.61
1:B:522:HIS:HB2	1:B:526:LYS:NZ	2.15	0.61
1:A:13:VAL:HB	1:A:120:GLN:HE22	1.65	0.61
1:A:396:ARG:NH1	1:A:482:ASN:O	2.33	0.61
1:C:223:PRO:HD3	1:C:532:ARG:HH22	1.65	0.61
1:C:396:ARG:NH1	1:C:482:ASN:O	2.33	0.61
1:D:374:GLU:OE1	1:D:374:GLU:N	2.29	0.61
1:B:540:ARG:O	1:B:543:THR:OG1	2.13	0.61
2:F:78:VAL:HG11	2:F:85:PHE:CD2	2.36	0.61
1:A:28:LEU:HD23	1:A:32:GLN:HE21	1.65	0.61
1:A:223:PRO:HD3	1:A:532:ARG:HH22	1.65	0.61
1:B:506:LYS:HA	1:B:509:ILE:HD12	1.81	0.61
3:G:17:DC:H2''	3:G:18:DA:C8	2.35	0.61
1:C:506:LYS:NZ	2:F:95:VAL:HA	2.16	0.61
1:A:75:LEU:HD12	1:A:86:ILE:HD11	1.83	0.60
1:B:362:ASP:OD1	1:B:365:ARG:NH2	2.33	0.60
1:C:452:GLN:HB2	1:C:454:ARG:NH2	2.16	0.60
3:G:21:DT:H2''	3:G:22:DA:N3	2.16	0.60
1:D:253:ARG:NH2	1:D:255:GLY:HA3	2.16	0.60
1:A:42:VAL:O	1:A:46:ILE:HG12	2.01	0.60
1:A:269:THR:CB	3:G:5:DA:OP1	2.50	0.60
1:C:515:ARG:NH1	1:C:518:GLN:OE1	2.35	0.60
1:A:452:GLN:HB2	1:A:454:ARG:NH2	2.16	0.60
1:B:475:SER:O	1:B:478:LEU:N	2.33	0.60
1:C:244:GLU:O	1:C:247:VAL:HG22	2.02	0.60
1:D:337:THR:O	1:D:341:ARG:HG2	2.02	0.60
2:E:78:VAL:HG11	2:E:85:PHE:CD2	2.36	0.60
2:F:15:ARG:NE	4:H:8:DC:OP2	2.34	0.60
1:A:515:ARG:NH1	1:A:518:GLN:OE1	2.35	0.60
1:B:357:LEU:HD13	1:B:360:LEU:HD12	1.83	0.60
1:A:373:LEU:HD12	1:A:373:LEU:H	1.67	0.60

*Continued on next page...*

*Continued from previous page...*

Atom-1	Atom-2	Interatomic distance (Å)	Clash overlap (Å)
1:C:373:LEU:HD12	1:C:373:LEU:H	1.67	0.60
1:D:311:TYR:O	1:D:314:SER:OG	2.13	0.60
1:B:356:LEU:O	1:B:359:SER:OG	2.19	0.60
1:C:474:ASP:O	1:C:478:LEU:HG	2.02	0.59
1:D:357:LEU:HD13	1:D:360:LEU:HD12	1.83	0.59
1:C:265:ASN:OD1	1:D:270:THR:OG1	2.14	0.59
1:B:253:ARG:NH2	1:B:255:GLY:HA3	2.16	0.59
1:B:337:THR:O	1:B:341:ARG:HG2	2.02	0.59
1:A:244:GLU:O	1:A:247:VAL:HG22	2.02	0.59
1:A:303:ASN:OD1	1:A:304:VAL:N	2.35	0.59
1:B:505:ARG:NH2	4:H:28:DT:H71	2.17	0.59
2:F:51:ALA:O	2:F:54:GLU:HG3	2.03	0.59
1:A:474:ASP:O	1:A:478:LEU:HG	2.02	0.59
1:A:418:PRO:HB3	1:A:491:PHE:CD2	2.38	0.59
1:C:334:ASN:ND2	1:C:471:LEU:HD13	2.17	0.59
1:A:14:ARG:HD3	4:H:32:DG:OP2	2.02	0.59
1:A:114:TYR:N	1:A:117:GLU:OE2	2.36	0.59
1:B:468:PHE:HB3	1:B:472:ILE:HD13	1.83	0.59
1:D:385:GLY:O	1:D:389:GLN:HG2	2.03	0.59
1:D:540:ARG:O	1:D:543:THR:OG1	2.13	0.59
1:D:468:PHE:HB3	1:D:472:ILE:HD13	1.83	0.59
1:D:516:MET:O	1:D:530:SER:OG	2.21	0.59
1:A:334:ASN:ND2	1:A:471:LEU:HD13	2.17	0.58
1:C:214:ILE:HB	1:C:527:TYR:CE1	2.38	0.58
1:C:253:ARG:NH2	2:F:28:GLY:O	2.36	0.58
1:C:418:PRO:HB3	1:C:491:PHE:CD2	2.38	0.58
4:H:3:DC:P	4:H:3:DC:H3'	2.43	0.58
2:E:51:ALA:O	2:E:54:GLU:HG3	2.03	0.58
1:A:311:TYR:HD2	1:A:315:PHE:CZ	2.21	0.58
1:C:303:ASN:OD1	1:C:304:VAL:N	2.36	0.58
1:D:259:GLN:HE22	1:D:540:ARG:HH22	1.48	0.58
4:H:2:DT:H2''	4:H:3:DC:H5''	1.84	0.58
1:C:487:ARG:N	1:C:490:ASP:OD2	2.26	0.58
3:G:3:DC:H2'	3:G:3:DC:O2	2.04	0.58
3:G:4:DC:N4	4:H:23:DG:H1	2.02	0.58
1:A:88:LEU:HB3	1:A:99:VAL:HB	1.86	0.58
1:B:516:MET:O	1:B:530:SER:OG	2.21	0.58
2:F:13:ASN:HD22	2:F:16:ARG:HG3	1.68	0.58
1:C:311:TYR:HD2	1:C:315:PHE:CZ	2.21	0.58
1:B:513:GLU:O	1:B:517:GLU:HG2	2.03	0.58
1:A:121:LEU:HA	1:A:124:GLN:NE2	2.15	0.58

*Continued on next page...*

*Continued from previous page...*

Atom-1	Atom-2	Interatomic distance (Å)	Clash overlap (Å)
1:B:385:GLY:O	1:B:389:GLN:HG2	2.03	0.58
1:A:214:ILE:HB	1:A:527:TYR:CE1	2.38	0.58
3:G:9:DT:H5'	3:G:9:DT:H6	1.68	0.58
1:D:490:ASP:OD2	1:D:507:ARG:NH1	2.37	0.57
1:D:513:GLU:O	1:D:517:GLU:HG2	2.03	0.57
1:A:201:VAL:O	1:A:205:SER:CB	2.24	0.57
1:A:234:ARG:HG3	3:G:5:DA:P	2.43	0.57
1:A:343:TRP:HE1	1:A:349:GLU:HB2	1.69	0.57
1:D:544:ARG:HG2	1:D:544:ARG:NH1	2.13	0.57
1:D:356:LEU:O	1:D:359:SER:OG	2.19	0.57
1:D:283:VAL:O	1:D:296:THR:N	2.37	0.57
1:C:343:TRP:NE1	1:C:349:GLU:O	2.37	0.57
1:C:380:GLU:OE1	1:C:450:TYR:OH	2.22	0.57
2:E:13:ASN:HD22	2:E:16:ARG:HG3	1.68	0.57
1:B:230:LYS:CE	4:H:24:DG:C6	2.87	0.57
1:B:306:THR:OG1	1:B:442:GLY:O	2.18	0.57
1:A:343:TRP:NE1	1:A:349:GLU:O	2.38	0.57
1:B:283:VAL:O	1:B:296:THR:N	2.37	0.56
1:B:288:TYR:HB3	4:H:25:DA:P	2.45	0.56
1:C:343:TRP:HE1	1:C:349:GLU:HB2	1.69	0.56
2:E:66:LEU:HD13	2:F:68:LEU:HD11	1.87	0.56
1:A:446:TYR:CB	1:B:304:VAL:HG21	2.35	0.56
1:B:246:ARG:HH21	3:G:2:DA:C5'	2.18	0.56
1:A:47:ARG:HD2	1:A:50:ARG:HH22	1.70	0.56
1:A:238:ASP:O	1:A:254:LEU:HB2	2.05	0.56
1:A:380:GLU:OE1	1:A:450:TYR:OH	2.22	0.56
1:C:238:ASP:O	1:C:254:LEU:HB2	2.05	0.56
1:A:34:GLU:OE2	1:A:303:ASN:HB2	2.06	0.56
1:B:490:ASP:OD2	1:B:507:ARG:NH1	2.37	0.56
1:B:450:TYR:HB3	1:B:463:ASP:OD1	2.05	0.56
1:D:450:TYR:HB3	1:D:463:ASP:OD1	2.05	0.56
1:A:322:ASN:HB3	1:A:326:ARG:HH22	1.71	0.56
1:B:312:GLN:H	1:B:312:GLN:CD	2.09	0.56
1:C:322:ASN:HB3	1:C:326:ARG:HH22	1.71	0.56
1:C:534:LEU:HA	1:C:537:VAL:HG22	1.87	0.56
1:C:336:ARG:HH12	1:C:360:LEU:HB2	1.70	0.56
4:H:33:DA:H2''	4:H:34:DA:C8	2.41	0.56
1:B:291:TRP:CE2	4:H:26:DC:H2''	2.40	0.56
1:A:80:LEU:HD12	1:A:127:LEU:HD23	1.88	0.56
2:E:6:ILE:HD13	2:E:37:GLN:HA	1.88	0.56
1:A:328:ILE:HD13	1:A:376:LEU:HG	1.88	0.55

*Continued on next page...*

*Continued from previous page...*

Atom-1	Atom-2	Interatomic distance (Å)	Clash overlap (Å)
1:B:220:ARG:NH1	1:B:257:THR:HG23	2.22	0.55
1:D:220:ARG:NH1	1:D:257:THR:HG23	2.22	0.55
1:D:308:THR:C	1:D:312:GLN:HE22	2.10	0.55
1:A:19:HIS:HA	1:A:26:ALA:HB2	1.88	0.55
1:D:339:LEU:HA	1:D:394:MET:CE	2.36	0.55
1:D:366:HIS:HA	1:D:369:ARG:CD	2.30	0.55
1:A:506:LYS:NZ	2:E:95:VAL:HA	2.22	0.55
1:A:534:LEU:HA	1:A:537:VAL:HG22	1.87	0.55
2:F:6:ILE:HD13	2:F:37:GLN:HA	1.88	0.55
1:B:339:LEU:HA	1:B:394:MET:CE	2.36	0.55
1:D:366:HIS:CA	1:D:369:ARG:HD2	2.27	0.55
2:E:42:ARG:O	2:E:45:ILE:HG22	2.06	0.55
1:A:522:HIS:CE1	1:A:524:ILE:HB	2.42	0.55
1:B:475:SER:C	1:B:479:MET:HE3	2.27	0.55
1:D:312:GLN:H	1:D:312:GLN:CD	2.09	0.55
1:B:308:THR:C	1:B:312:GLN:HE22	2.09	0.55
2:E:62:HIS:HE2	2:E:64:LEU:HD21	1.72	0.55
1:B:524:ILE:HG23	1:B:525:PHE:CD2	2.42	0.55
1:C:223:PRO:HB2	1:C:225:TYR:CE2	2.42	0.55
1:D:365:ARG:O	1:D:369:ARG:HG3	2.07	0.55
1:D:521:THR:HA	1:D:528:THR:HA	1.89	0.55
1:A:223:PRO:HB2	1:A:225:TYR:CE2	2.42	0.55
1:C:522:HIS:CE1	1:C:524:ILE:HB	2.42	0.55
1:D:413:ARG:HB3	1:D:414:PRO:HD3	1.88	0.55
2:F:42:ARG:O	2:F:45:ILE:HG22	2.06	0.55
1:C:531:TYR:HA	1:C:534:LEU:HD12	1.89	0.54
1:A:19:HIS:NE2	1:A:167:GLU:OE1	2.40	0.54
2:E:38:CYS:HB3	2:E:40:LEU:HD12	1.88	0.54
1:C:328:ILE:HD13	1:C:376:LEU:HG	1.88	0.54
2:F:38:CYS:HB3	2:F:40:LEU:HD12	1.88	0.54
1:D:524:ILE:HG23	1:D:525:PHE:CD2	2.42	0.54
2:F:13:ASN:ND2	2:F:15:ARG:HB2	2.22	0.54
1:B:336:ARG:HA	1:B:339:LEU:HD12	1.89	0.54
1:A:14:ARG:NH2	4:H:32:DG:P	2.80	0.54
1:D:254:LEU:HD23	1:D:257:THR:HG21	1.90	0.54
1:B:413:ARG:HB3	1:B:414:PRO:HD3	1.88	0.54
1:C:513:GLU:OE1	1:C:532:ARG:NH1	2.41	0.54
1:A:531:TYR:HA	1:A:534:LEU:HD12	1.89	0.54
1:B:365:ARG:O	1:B:369:ARG:HG3	2.07	0.54
1:C:418:PRO:HB3	1:C:491:PHE:CE2	2.43	0.54
1:A:336:ARG:HH12	1:A:360:LEU:HB2	1.70	0.54

*Continued on next page...*

*Continued from previous page...*

Atom-1	Atom-2	Interatomic distance (Å)	Clash overlap (Å)
1:B:521:THR:HA	1:B:528:THR:HA	1.89	0.54
1:B:246:ARG:HH21	3:G:2:DA:H3'	1.72	0.53
1:A:389:GLN:OE1	1:A:390:HIS:ND1	2.41	0.53
1:A:522:HIS:HE1	1:A:524:ILE:HB	1.73	0.53
1:B:366:HIS:CA	1:B:369:ARG:HD2	2.27	0.53
1:B:519:GLU:HG3	1:B:530:SER:N	2.24	0.53
1:A:21:TYR:CE2	4:H:34:DA:C5	2.96	0.53
1:B:246:ARG:NH2	3:G:2:DA:C5'	2.71	0.53
1:C:389:GLN:OE1	1:C:390:HIS:ND1	2.41	0.53
1:A:418:PRO:HB3	1:A:491:PHE:CE2	2.43	0.53
1:B:516:MET:CG	1:B:532:ARG:HG3	2.39	0.53
2:E:13:ASN:ND2	2:E:15:ARG:HB2	2.22	0.53
1:D:220:ARG:HH11	1:D:257:THR:HG23	1.74	0.53
1:D:475:SER:C	1:D:479:MET:HE3	2.29	0.53
1:A:513:GLU:OE1	1:A:532:ARG:NH1	2.41	0.53
1:A:539:ALA:O	1:A:543:THR:HG23	2.09	0.53
1:D:306:THR:OG1	1:D:442:GLY:O	2.18	0.53
2:E:51:ALA:O	2:E:55:ILE:HG12	2.09	0.53
1:D:336:ARG:HA	1:D:339:LEU:HD12	1.89	0.53
3:G:2:DA:OP1	3:G:2:DA:H4'	2.04	0.53
2:F:42:ARG:O	2:F:46:ILE:HG12	2.09	0.53
1:A:362:ASP:HA	1:A:365:ARG:NH2	2.24	0.53
1:C:431:THR:O	1:C:435:THR:HG23	2.09	0.53
1:D:516:MET:CG	1:D:532:ARG:HG3	2.39	0.53
1:A:185:PRO:O	1:A:188:PRO:HD2	2.09	0.52
1:A:361:GLN:O	1:A:364:MET:HG3	2.09	0.52
1:B:254:LEU:HD23	1:B:257:THR:HG21	1.90	0.52
1:B:280:GLU:OE2	1:B:300:GLY:HA3	2.09	0.52
1:C:362:ASP:HA	1:C:365:ARG:NH2	2.24	0.52
1:C:522:HIS:HE1	1:C:524:ILE:HB	1.73	0.52
1:A:405:PHE:CZ	1:A:407:PHE:HA	2.44	0.52
1:A:431:THR:O	1:A:435:THR:HG23	2.09	0.52
1:C:539:ALA:O	1:C:543:THR:HG23	2.09	0.52
1:B:475:SER:HA	1:B:478:LEU:HG	1.92	0.52
1:A:416:LYS:HE2	1:A:416:LYS:CA	2.37	0.52
1:B:259:GLN:CD	1:B:259:GLN:H	2.13	0.52
1:D:254:LEU:HD22	1:D:279:ARG:HD2	1.90	0.52
1:D:280:GLU:OE2	1:D:300:GLY:HA3	2.09	0.52
1:A:10:LEU:HD22	1:A:81:GLY:HA2	1.91	0.52
1:A:75:LEU:HD22	1:A:131:HIS:CD2	2.45	0.52
1:C:303:ASN:ND2	1:C:306:THR:OG1	2.43	0.52

*Continued on next page...*



*Continued from previous page...*

Atom-1	Atom-2	Interatomic distance (Å)	Clash overlap (Å)
1:D:522:HIS:HB2	1:D:526:LYS:HZ2	1.75	0.52
4:H:25:DA:N3	4:H:25:DA:H2'	2.25	0.52
1:C:405:PHE:CZ	1:C:407:PHE:HA	2.44	0.52
1:D:519:GLU:HG3	1:D:530:SER:N	2.24	0.52
2:F:7:VAL:HA	2:F:64:LEU:O	2.10	0.52
1:A:102:LYS:NZ	4:H:33:DA:OP2	2.30	0.52
1:B:220:ARG:HH11	1:B:257:THR:HG23	1.74	0.52
1:D:544:ARG:O	1:D:549:GLU:HB2	2.09	0.52
2:E:38:CYS:HB3	2:E:40:LEU:CD1	2.40	0.52
2:E:10:ASP:OD2	2:F:32:GLN:HG3	2.10	0.52
2:E:42:ARG:O	2:E:46:ILE:HG12	2.09	0.52
2:F:38:CYS:HB3	2:F:40:LEU:CD1	2.40	0.52
1:A:303:ASN:ND2	1:A:306:THR:OG1	2.43	0.52
1:B:326:ARG:HB2	1:B:555:ASN:HD21	1.75	0.52
1:C:351:LYS:HA	1:C:351:LYS:HE3	1.92	0.52
2:E:65:ILE:CG1	2:F:79:SER:HB3	2.41	0.52
2:F:51:ALA:O	2:F:55:ILE:HG12	2.09	0.52
1:A:177:MET:HE3	1:A:177:MET:HA	1.92	0.51
1:A:302:ARG:HA	1:A:302:ARG:CZ	2.40	0.51
1:C:303:ASN:O	1:C:307:ARG:NH2	2.42	0.51
2:E:62:HIS:CE1	2:F:83:LYS:HG2	2.45	0.51
1:A:19:HIS:CE1	1:A:167:GLU:OE1	2.63	0.51
1:B:344:ARG:NH1	1:B:346:GLU:OE2	2.35	0.51
1:B:544:ARG:O	1:B:549:GLU:HB2	2.09	0.51
1:A:19:HIS:HB2	1:A:168:MET:CE	2.40	0.51
1:B:544:ARG:HG2	1:B:544:ARG:NH1	2.13	0.51
1:C:361:GLN:O	1:C:364:MET:HG3	2.09	0.51
1:D:259:GLN:CD	1:D:259:GLN:H	2.13	0.51
1:D:374:GLU:O	1:D:377:LEU:HG	2.10	0.51
2:E:7:VAL:HA	2:E:64:LEU:O	2.10	0.51
1:A:303:ASN:O	1:A:307:ARG:NH2	2.42	0.51
1:A:333:ALA:HA	1:A:336:ARG:HG2	1.92	0.51
1:B:254:LEU:HD22	1:B:279:ARG:HD2	1.90	0.51
1:C:302:ARG:HA	1:C:302:ARG:CZ	2.40	0.51
1:C:360:LEU:HA	1:C:363:ASP:OD2	2.11	0.51
3:G:17:DC:H2''	3:G:18:DA:H8	1.73	0.51
1:B:287:SER:N	1:B:291:TRP:O	2.37	0.51
1:D:326:ARG:HB2	1:D:555:ASN:HD21	1.75	0.51
1:D:475:SER:HA	1:D:478:LEU:HG	1.92	0.51
1:A:360:LEU:HA	1:A:363:ASP:OD2	2.11	0.51
1:B:312:GLN:N	1:B:312:GLN:OE1	2.44	0.51

*Continued on next page...*



*Continued from previous page...*

Atom-1	Atom-2	Interatomic distance (Å)	Clash overlap (Å)
1:A:160:ARG:HH21	1:A:160:ARG:HG3	1.76	0.51
1:A:351:LYS:HA	1:A:351:LYS:HE3	1.92	0.51
1:A:399:ASP:HB2	1:A:403:MET:O	2.11	0.51
1:A:183:ASP:HA	1:A:212:ARG:NH2	2.25	0.51
1:A:500:LEU:HB3	1:A:505:ARG:HG3	1.92	0.51
1:B:386:ARG:HG3	1:B:386:ARG:NH2	2.19	0.51
1:C:333:ALA:HA	1:C:336:ARG:HG2	1.92	0.51
1:A:73:VAL:HB	1:A:86:ILE:HD12	1.94	0.50
1:B:374:GLU:O	1:B:377:LEU:HG	2.10	0.50
1:D:375:VAL:O	1:D:379:ILE:HG23	2.11	0.50
1:A:63:GLN:HB3	1:A:93:GLY:O	2.11	0.50
1:C:311:TYR:HD2	1:C:315:PHE:HZ	1.59	0.50
1:C:412:ARG:NH1	1:C:414:PRO:HD2	2.26	0.50
1:C:485:GLU:OE1	1:C:507:ARG:HD2	2.11	0.50
2:E:64:LEU:HD11	2:F:31:LEU:HD21	1.93	0.50
1:A:13:VAL:HG13	1:A:83:THR:O	2.11	0.50
1:A:78:GLU:HG3	1:A:79:ARG:N	2.27	0.50
1:C:399:ASP:HB2	1:C:403:MET:O	2.11	0.50
1:C:416:LYS:HE2	1:C:416:LYS:CA	2.37	0.50
1:A:311:TYR:CD2	1:B:311:TYR:HD2	2.29	0.50
1:D:312:GLN:N	1:D:312:GLN:OE1	2.44	0.50
1:D:386:ARG:HG3	1:D:386:ARG:NH2	2.19	0.50
1:A:102:LYS:HA	1:A:102:LYS:HE2	1.94	0.50
1:A:235:LYS:O	3:G:5:DA:H3'	2.11	0.50
1:B:375:VAL:O	1:B:379:ILE:HG23	2.11	0.50
1:C:278:ARG:HD3	3:G:26:DC:N4	2.26	0.50
3:G:16:DT:H2''	3:G:17:DC:H6	1.77	0.50
1:C:339:LEU:HD11	1:C:387:TYR:HD1	1.77	0.50
1:C:410:ARG:NH1	1:C:420:ASN:OD1	2.44	0.50
1:A:339:LEU:HD11	1:A:387:TYR:HD1	1.77	0.50
1:A:360:LEU:O	1:A:363:ASP:HB2	2.12	0.50
1:A:412:ARG:NH1	1:A:414:PRO:HD2	2.26	0.50
1:A:485:GLU:OE1	1:A:507:ARG:HD2	2.11	0.50
1:A:410:ARG:NH1	1:A:420:ASN:OD1	2.45	0.50
1:D:361:GLN:HA	1:D:364:MET:HE3	1.93	0.50
1:A:47:ARG:HA	1:A:50:ARG:NH2	2.26	0.50
1:C:500:LEU:HB3	1:C:505:ARG:HG3	1.92	0.49
1:D:464:MET:HA	1:D:464:MET:CE	2.42	0.49
2:E:5:TYR:N	2:E:38:CYS:O	2.32	0.49
1:A:230:LYS:HZ1	1:A:245:GLU:HG2	1.76	0.49
1:D:386:ARG:HH21	1:D:386:ARG:CG	2.21	0.49

*Continued on next page...*

*Continued from previous page...*

Atom-1	Atom-2	Interatomic distance (Å)	Clash overlap (Å)
1:D:493:ARG:CZ	1:D:498:CYS:HB2	2.42	0.49
1:B:522:HIS:HB2	1:B:526:LYS:HZ2	1.76	0.49
1:C:417:ASP:HB2	1:C:420:ASN:HB2	1.94	0.49
1:C:461:ALA:HA	1:C:464:MET:HB2	1.94	0.49
1:A:18:GLU:O	1:A:21:TYR:HB3	2.13	0.49
1:C:230:LYS:NZ	1:C:245:GLU:HG2	2.28	0.49
1:A:253:ARG:NH2	2:E:28:GLY:O	2.45	0.49
1:C:344:ARG:HH11	1:C:397:GLY:N	2.11	0.49
1:D:242:ILE:HB	1:D:250:ALA:H	1.78	0.49
1:D:244:GLU:HB3	1:D:247:VAL:HG23	1.95	0.49
3:G:10:DG:C6	3:G:11:DA:C6	3.01	0.49
3:G:26:DC:H4'	3:G:27:DT:C4	2.47	0.49
1:B:244:GLU:HB3	1:B:247:VAL:HG23	1.95	0.49
1:C:341:ARG:HG2	1:C:342:ASN:OD1	2.12	0.49
1:B:276:CYS:SG	1:B:281:ILE:HB	2.53	0.49
3:G:22:DA:H2'	3:G:23:DC:C6	2.48	0.49
1:B:493:ARG:CZ	1:B:498:CYS:HB2	2.42	0.49
1:C:360:LEU:O	1:C:363:ASP:HB2	2.12	0.49
1:C:511:GLY:HA2	1:C:514:ARG:CZ	2.43	0.49
1:D:276:CYS:SG	1:D:281:ILE:HB	2.53	0.49
1:A:230:LYS:NZ	1:A:245:GLU:HG2	2.28	0.49
1:A:511:GLY:HA2	1:A:514:ARG:CZ	2.43	0.49
1:A:187:CYS:O	1:A:189:ARG:N	2.45	0.48
1:C:344:ARG:HH11	1:C:396:ARG:C	2.17	0.48
1:D:344:ARG:NH1	1:D:346:GLU:OE2	2.35	0.48
1:B:466:GLU:HB2	1:B:467:PRO:HD3	1.95	0.48
2:E:39:ARG:CZ	2:E:90:ARG:HG3	2.43	0.48
1:A:409:THR:O	1:A:412:ARG:HB3	2.13	0.48
2:E:13:ASN:ND2	2:E:16:ARG:HG3	2.28	0.48
1:A:344:ARG:HH11	1:A:397:GLY:N	2.11	0.48
1:A:417:ASP:HB2	1:A:420:ASN:HB2	1.94	0.48
1:B:386:ARG:HH21	1:B:386:ARG:CG	2.21	0.48
1:C:409:THR:O	1:C:412:ARG:HB3	2.13	0.48
1:D:466:GLU:HB2	1:D:467:PRO:HD3	1.96	0.48
2:E:62:HIS:CG	2:F:83:LYS:HZ3	2.31	0.48
1:A:311:TYR:HD2	1:A:315:PHE:HZ	1.59	0.48
1:A:461:ALA:HA	1:A:464:MET:HB2	1.94	0.48
1:D:512:PHE:HD1	1:D:512:PHE:O	1.97	0.48
2:F:39:ARG:CZ	2:F:90:ARG:HG3	2.44	0.48
3:G:8:DG:C2	4:H:20:DG:C4	2.88	0.48
3:G:9:DT:H5'	3:G:9:DT:C6	2.47	0.48

*Continued on next page...*

*Continued from previous page...*

Atom-1	Atom-2	Interatomic distance (Å)	Clash overlap (Å)
1:A:15:MET:HE3	1:A:30:TRP:CA	2.42	0.48
1:A:185:PRO:C	1:A:188:PRO:HD2	2.34	0.48
1:A:344:ARG:HH11	1:A:396:ARG:C	2.17	0.48
1:B:325:ARG:HD3	1:B:367:ALA:O	2.14	0.48
1:B:331:LYS:HG3	1:B:466:GLU:O	2.14	0.48
1:B:450:TYR:HB3	1:B:463:ASP:CG	2.33	0.48
1:B:458:PRO:HB2	1:B:461:ALA:HB3	1.96	0.48
1:D:458:PRO:HB2	1:D:461:ALA:HB3	1.96	0.48
1:D:516:MET:SD	1:D:531:TYR:HB2	2.54	0.48
2:F:7:VAL:HG22	2:F:65:ILE:HG22	1.96	0.48
1:A:269:THR:HG21	3:G:5:DA:OP1	2.14	0.48
1:B:220:ARG:HH11	1:B:257:THR:C	2.16	0.48
1:B:226:VAL:O	1:B:263:PHE:HD2	1.97	0.48
1:B:242:ILE:HB	1:B:250:ALA:H	1.78	0.48
1:B:512:PHE:HD1	1:B:512:PHE:O	1.97	0.48
1:A:259:GLN:NE2	1:A:436:VAL:HG11	2.28	0.48
1:C:259:GLN:NE2	1:C:436:VAL:HG11	2.28	0.48
1:A:43:ASP:O	1:A:47:ARG:HG2	2.14	0.48
1:A:228:SER:HB3	1:A:244:GLU:OE1	2.14	0.48
1:A:336:ARG:CZ	1:A:360:LEU:HB2	2.43	0.48
1:C:336:ARG:CZ	1:C:360:LEU:HB2	2.44	0.48
2:E:7:VAL:HG22	2:E:65:ILE:HG22	1.96	0.48
2:E:9:TYR:OH	4:H:16:DT:OP1	2.32	0.48
2:F:15:ARG:HB3	2:F:19:ARG:HH22	1.79	0.48
4:H:29:DT:H3'	4:H:30:DT:H71	1.95	0.48
1:A:204:LEU:HD22	1:A:554:PRO:HG3	1.96	0.48
1:A:322:ASN:HB3	1:A:326:ARG:NH2	2.29	0.48
1:B:230:LYS:CE	4:H:24:DG:O6	2.62	0.48
1:B:486:ILE:O	1:B:487:ARG:NE	2.47	0.48
1:D:357:LEU:HD13	1:D:357:LEU:HA	1.70	0.48
1:D:450:TYR:HB3	1:D:463:ASP:CG	2.33	0.48
2:E:32:GLN:HG3	2:E:33:LEU:H	1.79	0.48
1:A:177:MET:CE	1:A:178:PRO:HD2	2.44	0.47
1:A:237:GLY:CA	3:G:6:DT:OP1	2.62	0.47
1:A:115:GLU:OE1	1:A:118:ARG:NH1	2.47	0.47
1:A:341:ARG:HG2	1:A:342:ASN:OD1	2.12	0.47
1:D:331:LYS:HG3	1:D:466:GLU:O	2.14	0.47
1:D:226:VAL:O	1:D:263:PHE:HD2	1.97	0.47
1:D:287:SER:N	1:D:291:TRP:O	2.37	0.47
1:A:102:LYS:HA	1:A:102:LYS:HE3	1.93	0.47
1:B:515:ARG:HA	1:B:518:GLN:OE1	2.14	0.47

*Continued on next page...*

*Continued from previous page...*

Atom-1	Atom-2	Interatomic distance (Å)	Clash overlap (Å)
1:C:224:LEU:CD2	2:F:93:VAL:HG12	2.44	0.47
1:C:230:LYS:HZ1	1:C:245:GLU:HG2	1.79	0.47
1:D:220:ARG:HH11	1:D:257:THR:C	2.16	0.47
1:D:515:ARG:HA	1:D:518:GLN:OE1	2.14	0.47
1:A:156:GLU:OE1	1:A:156:GLU:N	2.47	0.47
1:A:223:PRO:HD2	2:E:92:ALA:HB2	1.95	0.47
1:B:363:ASP:HA	1:B:366:HIS:ND1	2.30	0.47
2:F:13:ASN:ND2	2:F:16:ARG:HG3	2.28	0.47
1:A:67:ARG:NH2	1:A:92:GLU:HB3	2.30	0.47
1:A:302:ARG:HA	1:A:302:ARG:NH1	2.30	0.47
1:B:246:ARG:CD	3:G:2:DA:C2	2.98	0.47
1:C:302:ARG:HA	1:C:302:ARG:NH1	2.30	0.47
1:C:541:LEU:HD12	1:C:554:PRO:HG2	1.97	0.47
2:E:15:ARG:HB3	2:E:19:ARG:HH22	1.79	0.47
2:F:5:TYR:N	2:F:38:CYS:O	2.32	0.47
1:D:325:ARG:HD3	1:D:367:ALA:O	2.13	0.47
1:D:383:SER:O	1:D:386:ARG:HB3	2.15	0.47
1:D:486:ILE:O	1:D:487:ARG:NE	2.47	0.47
1:A:28:LEU:HA	1:A:32:GLN:NE2	2.29	0.47
1:A:85:LYS:HB3	1:A:85:LYS:HE3	1.42	0.47
1:B:288:TYR:HD2	4:H:25:DA:OP1	1.98	0.47
1:B:361:GLN:HA	1:B:364:MET:HE3	1.96	0.47
1:B:516:MET:SD	1:B:531:TYR:HB2	2.54	0.47
1:C:200:GLU:OE1	1:C:200:GLU:N	2.35	0.47
1:C:204:LEU:HD22	1:C:554:PRO:HG3	1.96	0.47
1:C:228:SER:HB3	1:C:244:GLU:OE1	2.14	0.47
1:D:410:ARG:NH1	1:D:411:ASN:H	2.13	0.47
2:F:32:GLN:HG3	2:F:33:LEU:H	1.79	0.47
1:A:278:ARG:NH2	4:H:26:DC:H5	2.12	0.47
1:A:310:GLN:HE21	1:A:447:ARG:HB3	1.80	0.47
1:A:536:GLU:H	1:A:536:GLU:HG3	1.51	0.47
1:B:246:ARG:NH2	3:G:2:DA:H5'	2.29	0.47
1:A:129:ARG:HA	1:A:133:PHE:O	2.15	0.47
1:A:328:ILE:HG13	1:A:329:VAL:N	2.30	0.47
1:C:446:TYR:CD1	1:C:458:PRO:HB3	2.50	0.46
1:A:446:TYR:CD1	1:A:458:PRO:HB3	2.51	0.46
1:C:351:LYS:HA	1:C:351:LYS:HE2	1.97	0.46
1:C:393:ARG:HA	1:C:393:ARG:NH2	2.30	0.46
2:E:52:ILE:O	2:E:52:ILE:HG13	2.16	0.46
1:A:446:TYR:HB3	1:B:304:VAL:HG21	1.96	0.46
1:B:428:ALA:O	1:B:431:THR:OG1	2.32	0.46

*Continued on next page...*

*Continued from previous page...*

Atom-1	Atom-2	Interatomic distance (Å)	Clash overlap (Å)
1:D:331:LYS:HG3	1:D:466:GLU:C	2.36	0.46
4:H:33:DA:C5	4:H:34:DA:C2	3.03	0.46
1:B:464:MET:HA	1:B:464:MET:CE	2.42	0.46
1:C:322:ASN:HB3	1:C:326:ARG:NH2	2.29	0.46
3:G:18:DA:C6	3:G:19:DG:C6	3.04	0.46
2:E:12:ARG:HG2	4:H:14:DC:OP1	2.15	0.46
1:B:331:LYS:HG3	1:B:466:GLU:C	2.36	0.46
4:H:19:DC:H2''	4:H:20:DG:H5''	1.97	0.46
1:A:29:MET:O	1:A:33:GLY:HA2	2.15	0.46
1:C:328:ILE:HG13	1:C:329:VAL:N	2.30	0.46
1:D:539:ALA:O	1:D:543:THR:HG23	2.16	0.46
2:F:52:ILE:HG13	2:F:52:ILE:O	2.16	0.46
1:A:189:ARG:HD3	4:H:34:DA:H4'	1.96	0.46
1:A:193:VAL:HG21	1:A:215:ILE:HD13	1.98	0.46
1:B:383:SER:O	1:B:386:ARG:HB3	2.15	0.46
1:D:515:ARG:HA	1:D:515:ARG:HE	1.81	0.46
3:G:2:DA:H2''	3:G:3:DC:H5'	1.97	0.46
1:B:220:ARG:NE	1:B:257:THR:O	2.49	0.46
1:B:475:SER:O	1:B:478:LEU:HG	2.16	0.46
1:C:310:GLN:HE21	1:C:447:ARG:HB3	1.80	0.46
1:D:310:GLN:O	1:D:314:SER:HB3	2.16	0.46
1:D:363:ASP:HA	1:D:366:HIS:ND1	2.30	0.46
1:B:515:ARG:HA	1:B:515:ARG:HE	1.81	0.46
1:C:305:GLU:HG2	1:C:306:THR:N	2.31	0.46
1:C:331:LYS:NZ	1:C:466:GLU:OE1	2.46	0.46
1:C:362:ASP:OD1	1:C:366:HIS:CE1	2.69	0.46
1:B:410:ARG:NH1	1:B:411:ASN:H	2.13	0.45
1:B:539:ALA:O	1:B:543:THR:HG23	2.16	0.45
2:F:72:GLU:N	2:F:72:GLU:OE1	2.49	0.45
1:A:200:GLU:OE1	1:A:200:GLU:N	2.35	0.45
1:A:305:GLU:HG2	1:A:306:THR:N	2.31	0.45
1:C:310:GLN:NE2	1:C:447:ARG:HB3	2.31	0.45
1:C:316:ASP:OD2	1:C:319:THR:HG23	2.16	0.45
2:F:71:ALA:HA	2:F:74:VAL:HG22	1.98	0.45
1:A:91:GLY:HA3	1:A:96:VAL:HG12	1.98	0.45
1:C:302:ARG:NH2	1:D:456:GLY:HA2	2.31	0.45
1:C:406:ASP:OD1	1:C:408:THR:HG22	2.17	0.45
4:H:5:DT:H2''	4:H:6:DA:C8	2.51	0.45
4:H:12:DG:C2	4:H:13:DG:C4	3.04	0.45
1:A:393:ARG:NH2	1:A:393:ARG:HA	2.30	0.45
1:A:541:LEU:HD12	1:A:554:PRO:HG2	1.97	0.45

*Continued on next page...*

*Continued from previous page...*

Atom-1	Atom-2	Interatomic distance (Å)	Clash overlap (Å)
1:B:366:HIS:HA	1:B:369:ARG:CD	2.30	0.45
4:H:7:DG:C4	4:H:8:DC:C5	3.04	0.45
1:B:310:GLN:O	1:B:314:SER:HB3	2.16	0.45
3:G:12:DG:H1	4:H:15:DC:N4	2.15	0.45
1:A:48:HIS:CE1	4:H:32:DG:H5'	2.52	0.45
1:A:506:LYS:HA	1:A:506:LYS:HD3	1.54	0.45
1:B:287:SER:HB3	1:B:291:TRP:H	1.81	0.45
1:D:297:VAL:HG22	1:D:298:SER:O	2.17	0.45
1:A:316:ASP:OD2	1:A:319:THR:HG23	2.16	0.45
1:B:230:LYS:HE3	4:H:24:DG:C6	2.52	0.45
1:B:357:LEU:HD13	1:B:357:LEU:HA	1.70	0.45
1:C:232:TYR:HA	1:C:267:THR:OG1	2.16	0.45
1:C:391:PHE:CE1	1:C:478:LEU:HD21	2.52	0.45
1:C:506:LYS:HZ2	2:F:95:VAL:HA	1.80	0.45
1:D:475:SER:O	1:D:478:LEU:HG	2.16	0.45
1:D:547:SER:OG	1:D:549:GLU:HG2	2.16	0.45
2:E:30:TRP:NE1	2:E:32:GLN:O	2.49	0.45
2:F:13:ASN:ND2	2:F:16:ARG:H	2.15	0.45
2:F:30:TRP:NE1	2:F:32:GLN:O	2.49	0.45
4:H:13:DG:C2	4:H:14:DC:C2	3.04	0.45
1:A:391:PHE:CE1	1:A:478:LEU:HD21	2.52	0.45
1:C:369:ARG:HA	1:C:369:ARG:HD3	1.65	0.45
2:E:71:ALA:HA	2:E:74:VAL:HG22	1.99	0.45
1:A:310:GLN:NE2	1:A:447:ARG:HB3	2.31	0.45
1:A:362:ASP:OD1	1:A:366:HIS:CE1	2.69	0.45
1:A:511:GLY:HA2	1:A:514:ARG:NH1	2.32	0.45
1:B:351:LYS:HZ2	1:B:354:PRO:HG3	1.82	0.45
2:F:10:ASP:HA	3:G:15:DC:OP2	2.17	0.45
3:G:8:DG:C6	4:H:20:DG:C6	3.04	0.45
1:A:106:ARG:HB2	1:A:147:GLU:OE2	2.16	0.45
1:A:422:LEU:HD12	1:A:422:LEU:HA	1.83	0.45
1:A:492:VAL:HG23	1:A:499:ASN:HB2	1.99	0.45
1:B:547:SER:OG	1:B:549:GLU:HG2	2.16	0.45
2:E:13:ASN:ND2	2:E:16:ARG:H	2.15	0.45
2:E:72:GLU:N	2:E:72:GLU:OE1	2.49	0.45
3:G:15:DC:C2	3:G:16:DT:C5	3.05	0.45
1:C:406:ASP:O	1:C:409:THR:OG1	2.34	0.44
1:C:533:ARG:HD2	1:C:536:GLU:OE2	2.18	0.44
1:D:220:ARG:NE	1:D:257:THR:O	2.49	0.44
1:D:502:ASP:C	1:D:506:LYS:HZ2	2.21	0.44
4:H:12:DG:H5'	4:H:12:DG:H8	1.82	0.44

*Continued on next page...*

*Continued from previous page...*

Atom-1	Atom-2	Interatomic distance (Å)	Clash overlap (Å)
1:A:76:SER:HA	1:A:83:THR:HA	1.99	0.44
1:A:318:GLU:OE1	1:A:318:GLU:N	2.40	0.44
1:A:406:ASP:OD1	1:A:408:THR:HG22	2.17	0.44
1:B:519:GLU:HA	1:B:530:SER:HA	1.99	0.44
1:C:457:ARG:HE	1:C:462:LEU:HD21	1.83	0.44
1:A:75:LEU:HD22	1:A:131:HIS:CE1	2.53	0.44
1:A:292:PHE:CE2	1:B:299:THR:HG21	2.52	0.44
1:D:434:TRP:O	1:D:438:LEU:HB2	2.17	0.44
2:F:5:TYR:CE2	2:F:67:ASP:HB2	2.53	0.44
2:F:39:ARG:NH2	2:F:88:ILE:O	2.45	0.44
1:A:446:TYR:HB2	1:B:304:VAL:HG21	1.99	0.44
1:A:457:ARG:HE	1:A:462:LEU:HD21	1.82	0.44
2:F:19:ARG:O	2:F:23:THR:HG23	2.17	0.44
4:H:9:DT:H6	4:H:9:DT:H5'	1.82	0.44
1:A:47:ARG:HH11	1:A:143:VAL:HG12	1.83	0.44
1:A:248:ARG:HH21	1:A:251:GLU:CD	2.20	0.44
1:A:351:LYS:HA	1:A:351:LYS:HE2	1.98	0.44
1:D:287:SER:HB3	1:D:291:TRP:H	1.81	0.44
2:F:39:ARG:NH2	2:F:89:LEU:HA	2.33	0.44
1:B:258:SER:HB3	1:B:259:GLN:OE1	2.18	0.44
1:B:275:GLU:OE1	1:B:279:ARG:NE	2.51	0.44
1:C:492:VAL:HG23	1:C:499:ASN:HB2	1.99	0.44
2:E:39:ARG:NH2	2:E:89:LEU:HA	2.33	0.44
2:F:17:TRP:O	2:F:21:PHE:HB2	2.18	0.44
1:C:536:GLU:H	1:C:536:GLU:HG3	1.51	0.44
2:E:19:ARG:O	2:E:23:THR:HG23	2.17	0.44
1:A:21:TYR:CZ	4:H:34:DA:C4	3.05	0.44
1:A:98:PRO:HG3	1:A:128:LEU:HD12	2.00	0.44
1:A:353:PRO:HA	1:A:354:PRO:HD3	1.92	0.44
1:A:538:GLN:NE2	1:A:556:PHE:HB2	2.33	0.44
1:A:545:TYR:HB2	1:A:550:ILE:HD11	2.00	0.44
1:B:288:TYR:CD2	4:H:24:DG:C2'	2.85	0.44
1:B:502:ASP:C	1:B:506:LYS:HZ2	2.21	0.44
1:C:475:SER:O	1:C:479:MET:HG2	2.18	0.44
2:E:5:TYR:CE2	2:E:67:ASP:HB2	2.53	0.44
1:A:14:ARG:NH1	4:H:33:DA:OP2	2.51	0.44
1:B:245:GLU:H	1:B:247:VAL:HG22	1.83	0.44
1:C:511:GLY:HA2	1:C:514:ARG:NH1	2.32	0.44
2:E:17:TRP:O	2:E:21:PHE:HB2	2.18	0.44
1:A:157:LEU:O	1:A:161:THR:HG23	2.18	0.43
1:C:248:ARG:HH21	1:C:251:GLU:CD	2.20	0.43

*Continued on next page...*



*Continued from previous page...*

Atom-1	Atom-2	Interatomic distance (Å)	Clash overlap (Å)
1:D:519:GLU:HA	1:D:530:SER:HA	1.99	0.43
3:G:25:DA:N3	3:G:25:DA:H2'	2.32	0.43
1:A:11:ILE:HG13	1:A:30:TRP:CH2	2.53	0.43
1:A:311:TYR:CE2	1:B:311:TYR:HD2	2.35	0.43
2:E:32:GLN:NE2	2:F:10:ASP:OD2	2.42	0.43
1:A:533:ARG:HD2	1:A:536:GLU:OE2	2.18	0.43
1:C:506:LYS:HA	1:C:506:LYS:HD3	1.54	0.43
1:C:520:VAL:O	1:C:528:THR:HA	2.19	0.43
1:D:275:GLU:OE1	1:D:279:ARG:NE	2.51	0.43
1:A:14:ARG:HG3	1:A:17:ASN:CB	2.48	0.43
1:C:286:LEU:HD11	1:C:432:ARG:HD3	2.01	0.43
1:C:304:VAL:HG12	1:C:307:ARG:NH1	2.34	0.43
1:D:230:LYS:NZ	4:H:3:DC:C6	2.84	0.43
1:D:481:ILE:HD12	1:D:481:ILE:HA	1.83	0.43
4:H:20:DG:H2'	4:H:21:DA:C8	2.53	0.43
1:A:235:LYS:NZ	3:G:6:DT:OP1	2.46	0.43
1:A:316:ASP:HB3	1:A:319:THR:OG1	2.19	0.43
1:A:475:SER:O	1:A:479:MET:HG2	2.18	0.43
1:B:434:TRP:O	1:B:438:LEU:HB2	2.17	0.43
1:C:316:ASP:HB3	1:C:319:THR:OG1	2.19	0.43
1:D:258:SER:HB3	1:D:259:GLN:OE1	2.18	0.43
4:H:28:DT:OP2	4:H:28:DT:H6	2.02	0.43
1:A:183:ASP:HA	1:A:212:ARG:HH22	1.84	0.43
1:A:192:LEU:O	1:A:195:ILE:N	2.36	0.43
1:A:292:PHE:CE1	1:A:432:ARG:HG3	2.54	0.43
1:A:302:ARG:HH21	1:B:456:GLY:HA2	1.84	0.43
1:B:297:VAL:HG22	1:B:298:SER:O	2.17	0.43
1:B:356:LEU:HD13	1:B:390:HIS:CE1	2.54	0.43
1:B:413:ARG:HD2	1:B:413:ARG:HA	1.74	0.43
1:B:505:ARG:NH1	4:H:27:DT:H2''	2.33	0.43
1:C:318:GLU:OE1	1:C:318:GLU:N	2.40	0.43
2:F:75:LYS:HG2	2:F:76:PRO:HD3	2.01	0.43
1:A:469:ARG:HB2	1:A:470:PRO:HD3	2.00	0.43
1:C:298:SER:O	1:C:298:SER:OG	2.32	0.43
1:C:413:ARG:HB3	1:C:414:PRO:HD3	1.99	0.43
1:D:245:GLU:H	1:D:247:VAL:HG22	1.83	0.43
1:D:331:LYS:HA	1:D:467:PRO:HA	2.01	0.43
3:G:4:DC:H2''	3:G:5:DA:C8	2.54	0.43
1:A:8:ILE:HA	1:A:9:PRO:HD3	1.91	0.43
1:A:127:LEU:HD23	1:A:127:LEU:HA	1.81	0.43
1:A:178:PRO:HA	1:A:179:PRO:HD3	1.92	0.43

*Continued on next page...*



*Continued from previous page...*

Atom-1	Atom-2	Interatomic distance (Å)	Clash overlap (Å)
1:A:503:SER:O	1:A:507:ARG:NE	2.51	0.43
1:B:246:ARG:HH21	3:G:2:DA:H5'	1.82	0.43
1:C:251:GLU:CD	1:C:251:GLU:N	2.72	0.43
1:C:538:GLN:NE2	1:C:556:PHE:HB2	2.33	0.43
4:H:18:DA:C2	4:H:19:DC:C2	3.06	0.43
1:A:286:LEU:HD11	1:A:432:ARG:HD3	2.01	0.43
1:A:446:TYR:O	1:A:459:ALA:HB3	2.19	0.43
1:A:520:VAL:O	1:A:528:THR:HA	2.19	0.43
1:C:292:PHE:CE1	1:C:432:ARG:HG3	2.54	0.43
1:C:472:ILE:O	1:C:476:THR:HG23	2.19	0.43
1:D:312:GLN:CD	1:D:312:GLN:N	2.73	0.43
2:E:9:TYR:HH	4:H:16:DT:P	2.42	0.43
1:B:341:ARG:HA	1:B:341:ARG:NE	2.34	0.42
1:B:519:GLU:N	1:B:519:GLU:OE1	2.52	0.42
1:A:304:VAL:HG12	1:A:307:ARG:NH1	2.34	0.42
1:A:413:ARG:HB3	1:A:414:PRO:HD3	1.99	0.42
1:B:345:GLY:HA2	1:B:393:ARG:NH1	2.34	0.42
1:C:336:ARG:NH1	1:C:357:LEU:O	2.52	0.42
1:D:341:ARG:HA	1:D:341:ARG:NE	2.34	0.42
1:D:395:LEU:HB2	1:D:398:GLY:O	2.20	0.42
1:D:428:ALA:O	1:D:431:THR:OG1	2.32	0.42
2:E:75:LYS:HG2	2:E:76:PRO:HD3	2.01	0.42
4:H:22:DT:O2	4:H:22:DT:H3'	2.18	0.42
1:A:251:GLU:CD	1:A:251:GLU:N	2.72	0.42
1:A:369:ARG:HA	1:A:369:ARG:HD3	1.65	0.42
1:C:302:ARG:HH21	1:D:456:GLY:HA2	1.84	0.42
1:C:545:TYR:HB2	1:C:550:ILE:HD11	2.00	0.42
1:A:59:PRO:HG2	1:A:73:VAL:HG13	2.02	0.42
1:A:88:LEU:HD23	1:A:89:VAL:N	2.33	0.42
1:A:336:ARG:NH1	1:A:357:LEU:O	2.52	0.42
1:B:470:PRO:HA	1:B:474:ASP:HB2	2.02	0.42
1:D:401:GLU:N	1:D:401:GLU:OE1	2.53	0.42
1:D:519:GLU:N	1:D:519:GLU:OE1	2.52	0.42
2:F:2:GLU:OE2	2:F:39:ARG:HG2	2.18	0.42
4:H:13:DG:N2	4:H:14:DC:C2	2.88	0.42
1:A:73:VAL:O	1:A:85:LYS:HA	2.19	0.42
1:A:176:THR:O	1:A:178:PRO:HD3	2.19	0.42
1:A:181:LEU:HG	5:A:601:SF4:S3	2.59	0.42
1:A:234:ARG:CZ	3:G:5:DA:OP2	2.68	0.42
1:A:406:ASP:O	1:A:409:THR:OG1	2.34	0.42
1:A:414:PRO:HA	1:A:415:PRO:HD3	1.88	0.42

*Continued on next page...*

*Continued from previous page...*

Atom-1	Atom-2	Interatomic distance (Å)	Clash overlap (Å)
1:D:345:GLY:HA2	1:D:393:ARG:NH1	2.35	0.42
1:D:393:ARG:HA	1:D:393:ARG:NH2	2.35	0.42
1:A:472:ILE:O	1:A:476:THR:HG23	2.19	0.42
1:B:312:GLN:CD	1:B:312:GLN:N	2.73	0.42
1:D:356:LEU:HD13	1:D:390:HIS:CE1	2.54	0.42
2:E:2:GLU:OE2	2:E:39:ARG:HG2	2.19	0.42
3:G:19:DG:H2''	3:G:20:DC:H6	1.84	0.42
4:H:2:DT:C2'	4:H:3:DC:H5''	2.48	0.42
1:A:121:LEU:HD13	1:A:124:GLN:NE2	2.34	0.42
1:A:269:THR:HB	3:G:5:DA:OP1	2.20	0.42
1:A:313:ARG:HG2	1:A:546:LEU:HD22	2.01	0.42
1:A:354:PRO:HA	1:A:357:LEU:CG	2.46	0.42
1:B:374:GLU:OE2	1:B:375:VAL:HG23	2.20	0.42
1:B:412:ARG:HH12	1:B:414:PRO:HB2	1.85	0.42
1:C:313:ARG:HG2	1:C:546:LEU:HD22	2.01	0.42
1:C:441:VAL:HG12	1:C:540:ARG:CZ	2.50	0.42
2:E:75:LYS:HB3	2:E:75:LYS:HE3	1.75	0.42
1:A:233:VAL:HB	1:A:268:LEU:HD12	2.02	0.42
1:C:531:TYR:O	1:C:534:LEU:HB2	2.20	0.42
1:D:374:GLU:OE2	1:D:375:VAL:HG23	2.20	0.42
2:E:83:LYS:H	2:F:62:HIS:HD1	1.68	0.42
1:A:13:VAL:HG11	1:A:84:ALA:HB2	2.02	0.42
1:A:172:ALA:HB1	1:B:455:PHE:HZ	1.85	0.42
1:B:259:GLN:OE1	1:B:259:GLN:N	2.44	0.42
1:C:446:TYR:O	1:C:459:ALA:HB3	2.19	0.42
2:E:2:GLU:OE2	2:E:40:LEU:N	2.53	0.42
2:E:32:GLN:HE21	2:F:10:ASP:CG	2.22	0.42
2:E:65:ILE:C	2:E:66:LEU:HD23	2.40	0.42
1:A:418:PRO:HB3	1:A:491:PHE:HD2	1.84	0.42
1:B:228:SER:HB3	1:B:231:ALA:HB2	2.02	0.42
1:B:311:TYR:HD1	1:B:311:TYR:HA	1.62	0.42
1:B:393:ARG:HA	1:B:393:ARG:NH2	2.35	0.42
1:B:401:GLU:OE1	1:B:401:GLU:N	2.53	0.42
1:D:470:PRO:HA	1:D:474:ASP:HB2	2.01	0.42
1:A:506:LYS:NZ	2:E:94:ILE:O	2.52	0.41
1:A:526:LYS:HE2	1:A:526:LYS:HB2	1.79	0.41
1:C:429:MET:SD	1:C:512:PHE:CE2	3.13	0.41
1:C:469:ARG:HB2	1:C:470:PRO:HD3	2.01	0.41
1:D:284:THR:HA	1:D:295:HIS:HA	2.02	0.41
2:E:39:ARG:NH2	2:E:88:ILE:O	2.45	0.41
2:F:75:LYS:HE3	2:F:75:LYS:HB3	1.75	0.41

*Continued on next page...*

*Continued from previous page...*

Atom-1	Atom-2	Interatomic distance (Å)	Clash overlap (Å)
4:H:26:DC:O2	4:H:26:DC:H2'	2.18	0.41
1:A:190:CYS:O	1:A:191:SER:OG	2.37	0.41
1:A:191:SER:C	1:A:192:LEU:HD12	2.41	0.41
1:B:340:ARG:HH12	1:B:357:LEU:HG	1.83	0.41
1:C:274:HIS:ND1	1:D:293:MET:CE	2.83	0.41
1:D:340:ARG:HH12	1:D:357:LEU:HG	1.83	0.41
2:F:9:TYR:CE1	2:F:34:SER:HB2	2.55	0.41
1:B:238:ASP:O	1:B:254:LEU:HD12	2.21	0.41
1:C:233:VAL:HB	1:C:268:LEU:HD12	2.02	0.41
1:C:356:LEU:O	1:C:359:SER:HB3	2.20	0.41
1:C:458:PRO:O	1:C:462:LEU:HB2	2.20	0.41
1:C:506:LYS:HZ1	2:F:95:VAL:HA	1.83	0.41
2:E:9:TYR:CE1	2:E:34:SER:HB2	2.55	0.41
2:F:2:GLU:OE2	2:F:40:LEU:N	2.53	0.41
1:A:356:LEU:O	1:A:359:SER:HB3	2.20	0.41
1:A:429:MET:SD	1:A:512:PHE:CE2	3.13	0.41
1:A:441:VAL:HG12	1:A:540:ARG:CZ	2.50	0.41
1:A:98:PRO:CB	1:A:124:GLN:HE22	2.33	0.41
1:A:458:PRO:O	1:A:462:LEU:HB2	2.20	0.41
1:A:531:TYR:O	1:A:534:LEU:HB2	2.20	0.41
1:B:281:ILE:HA	1:B:282:PRO:HD3	1.83	0.41
1:B:331:LYS:HA	1:B:467:PRO:HA	2.01	0.41
1:B:395:LEU:HB2	1:B:398:GLY:O	2.20	0.41
1:C:451:HIS:N	1:C:463:ASP:OD1	2.49	0.41
1:D:301:HIS:HD2	1:D:305:GLU:OE2	2.04	0.41
1:D:413:ARG:HA	1:D:413:ARG:HD2	1.75	0.41
2:E:55:ILE:HG12	2:E:55:ILE:H	1.43	0.41
4:H:34:DA:C8	4:H:34:DA:O5'	2.74	0.41
1:A:279:ARG:O	1:A:281:ILE:N	2.54	0.41
1:D:228:SER:HB3	1:D:231:ALA:HB2	2.02	0.41
2:F:65:ILE:C	2:F:66:LEU:HD23	2.40	0.41
1:A:42:VAL:HG21	2:E:43:ILE:HG22	2.03	0.41
1:A:227:GLN:HA	1:A:263:PHE:HB2	2.02	0.41
1:A:264:GLY:N	1:A:286:LEU:O	2.52	0.41
1:A:339:LEU:HD23	1:A:339:LEU:HA	1.77	0.41
1:A:388:PHE:N	1:A:388:PHE:CD1	2.89	0.41
1:B:301:HIS:HD2	1:B:305:GLU:OE2	2.04	0.41
1:C:224:LEU:HD23	1:C:224:LEU:HA	1.85	0.41
1:C:422:LEU:HD12	1:C:422:LEU:HA	1.83	0.41
1:D:412:ARG:HH12	1:D:414:PRO:HB2	1.85	0.41
2:F:91:GLN:N	2:F:91:GLN:OE1	2.54	0.41

*Continued on next page...*

*Continued from previous page...*

Atom-1	Atom-2	Interatomic distance (Å)	Clash overlap (Å)
1:A:28:LEU:HD23	1:A:32:GLN:NE2	2.31	0.41
1:B:544:ARG:HD3	1:B:549:GLU:HB2	2.02	0.41
1:C:418:PRO:HB3	1:C:491:PHE:HD2	1.84	0.41
1:D:462:LEU:O	1:D:465:MET:HG3	2.21	0.41
1:D:512:PHE:O	1:D:512:PHE:CD1	2.74	0.41
1:D:544:ARG:HD3	1:D:549:GLU:HB2	2.02	0.41
2:E:91:GLN:N	2:E:91:GLN:OE1	2.54	0.41
1:A:14:ARG:NH2	4:H:32:DG:OP2	2.53	0.41
1:A:117:GLU:OE1	1:A:117:GLU:N	2.35	0.41
1:A:244:GLU:H	1:A:249:VAL:HG23	1.86	0.41
1:B:284:THR:HA	1:B:295:HIS:HA	2.02	0.41
1:B:324:ALA:O	1:B:328:ILE:HG12	2.21	0.41
1:B:412:ARG:NH1	1:B:414:PRO:O	2.54	0.41
1:B:413:ARG:HB3	1:B:414:PRO:CD	2.51	0.41
1:B:429:MET:HB2	1:B:512:PHE:HE2	1.85	0.41
1:B:462:LEU:O	1:B:465:MET:HG3	2.21	0.41
1:B:512:PHE:O	1:B:512:PHE:CD1	2.74	0.41
1:B:544:ARG:HD3	1:B:544:ARG:HA	1.90	0.41
1:C:388:PHE:N	1:C:388:PHE:CD1	2.89	0.41
1:C:405:PHE:HB2	1:C:419:VAL:HG11	2.03	0.41
1:D:238:ASP:O	1:D:254:LEU:HD12	2.21	0.41
1:D:429:MET:HB2	1:D:512:PHE:HE2	1.85	0.41
2:E:37:GLN:OE1	2:E:85:PHE:HE1	2.04	0.41
3:G:19:DG:H2"	3:G:20:DC:C6	2.56	0.41
1:A:447:ARG:HD2	1:A:447:ARG:HA	1.84	0.41
1:B:339:LEU:HA	1:B:394:MET:HE3	2.02	0.41
1:D:455:PHE:N	1:D:455:PHE:CD1	2.89	0.41
1:A:394:MET:HE1	1:A:478:LEU:HD22	2.03	0.40
1:A:490:ASP:O	1:A:501:THR:HG23	2.21	0.40
1:B:323:LEU:HB3	1:B:327:TRP:CH2	2.56	0.40
1:B:369:ARG:HG3	1:B:369:ARG:H	1.36	0.40
1:B:455:PHE:N	1:B:455:PHE:CD1	2.89	0.40
1:C:410:ARG:HA	1:C:410:ARG:CZ	2.50	0.40
1:D:339:LEU:HA	1:D:394:MET:HE3	2.03	0.40
3:G:5:DA:H2"	3:G:6:DT:C5	2.56	0.40
3:G:16:DT:C2	3:G:17:DC:C5	3.09	0.40
1:A:236:ASP:HA	3:G:6:DT:P	2.59	0.40
1:A:254:LEU:HD13	1:A:254:LEU:HA	1.84	0.40
1:A:270:THR:HG22	1:A:274:HIS:CD2	2.56	0.40
1:C:234:ARG:HG3	4:H:5:DT:OP1	2.21	0.40
1:C:270:THR:HG22	1:C:274:HIS:CD2	2.56	0.40

*Continued on next page...*

Continued from previous page...

Atom-1	Atom-2	Interatomic distance (Å)	Clash overlap (Å)
1:D:412:ARG:NH1	1:D:414:PRO:O	2.54	0.40
1:D:462:LEU:HA	1:D:462:LEU:HD23	1.86	0.40
1:A:374:GLU:OE1	1:A:374:GLU:N	2.46	0.40
1:B:310:GLN:HE22	1:B:444:ASP:HB3	1.87	0.40
1:B:513:GLU:OE2	1:B:532:ARG:NH1	2.55	0.40
1:C:227:GLN:HA	1:C:263:PHE:HB2	2.03	0.40
1:C:279:ARG:O	1:C:281:ILE:N	2.54	0.40
1:A:410:ARG:HA	1:A:410:ARG:CZ	2.50	0.40
1:C:396:ARG:NE	1:C:396:ARG:HA	2.36	0.40
1:D:351:LYS:HZ2	1:D:354:PRO:HG3	1.87	0.40
1:A:35:PHE:HE2	1:A:37:HIS:NE2	2.20	0.40
1:A:46:ILE:O	1:A:49:ARG:HG2	2.22	0.40
1:A:158:ILE:O	1:A:161:THR:OG1	2.28	0.40
1:A:361:GLN:HA	1:A:364:MET:HG3	2.04	0.40
1:A:396:ARG:NE	1:A:396:ARG:HA	2.36	0.40
1:C:331:LYS:HD2	1:C:466:GLU:O	2.22	0.40
1:C:332:ILE:HD11	1:C:364:MET:HA	2.03	0.40

There are no symmetry-related clashes.

## 5.3 Torsion angles [i](#)

### 5.3.1 Protein backbone [i](#)

In the following table, the Percentiles column shows the percent Ramachandran outliers of the chain as a percentile score with respect to all PDB entries followed by that with respect to all EM entries.

The Analysed column shows the number of residues for which the backbone conformation was analysed, and the total number of residues.

Mol	Chain	Analysed	Favoured	Allowed	Outliers	Percentiles	
1	A	551/559 (99%)	505 (92%)	45 (8%)	1 (0%)	47	80
1	B	338/559 (60%)	299 (88%)	39 (12%)	0	100	100
1	C	360/559 (64%)	329 (91%)	30 (8%)	1 (0%)	41	74
1	D	338/559 (60%)	299 (88%)	39 (12%)	0	100	100
2	E	93/95 (98%)	86 (92%)	7 (8%)	0	100	100
2	F	93/95 (98%)	86 (92%)	7 (8%)	0	100	100
All	All	1773/2426 (73%)	1604 (90%)	167 (9%)	2 (0%)	54	84

All (2) Ramachandran outliers are listed below:

Mol	Chain	Res	Type
1	A	280	GLU
1	C	280	GLU

### 5.3.2 Protein sidechains [i](#)

In the following table, the Percentiles column shows the percent sidechain outliers of the chain as a percentile score with respect to all PDB entries followed by that with respect to all EM entries.

The Analysed column shows the number of residues for which the sidechain conformation was analysed, and the total number of residues.

Mol	Chain	Analysed	Rotameric	Outliers	Percentiles	
1	A	457/462 (99%)	404 (88%)	53 (12%)	5	29
1	B	280/462 (61%)	248 (89%)	32 (11%)	5	29
1	C	301/462 (65%)	264 (88%)	37 (12%)	4	26
1	D	280/462 (61%)	248 (89%)	32 (11%)	5	29
2	E	86/86 (100%)	70 (81%)	16 (19%)	1	10
2	F	86/86 (100%)	70 (81%)	16 (19%)	1	10
All	All	1490/2020 (74%)	1304 (88%)	186 (12%)	8	25

All (186) residues with a non-rotameric sidechain are listed below:

Mol	Chain	Res	Type
1	A	14	ARG
1	A	18	GLU
1	A	51	VAL
1	A	78	GLU
1	A	85	LYS
1	A	87	ASP
1	A	102	LYS
1	A	120	GLN
1	A	146	ARG
1	A	154	ASP
1	A	155	ASP
1	A	165	ILE
1	A	167	GLU
1	A	177	MET
1	A	182	GLU

*Continued on next page...*

*Continued from previous page...*

<b>Mol</b>	<b>Chain</b>	<b>Res</b>	<b>Type</b>
1	A	186	LYS
1	A	205	SER
1	A	206	HIS
1	A	224	LEU
1	A	232	TYR
1	A	238	ASP
1	A	239	CYS
1	A	240	LEU
1	A	251	GLU
1	A	254	LEU
1	A	262	LEU
1	A	280	GLU
1	A	312	GLN
1	A	313	ARG
1	A	323	LEU
1	A	336	ARG
1	A	349	GLU
1	A	351	LYS
1	A	356	LEU
1	A	358	MET
1	A	364	MET
1	A	369	ARG
1	A	373	LEU
1	A	394	MET
1	A	403	MET
1	A	410	ARG
1	A	416	LYS
1	A	420	ASN
1	A	454	ARG
1	A	462	LEU
1	A	464	MET
1	A	479	MET
1	A	487	ARG
1	A	500	LEU
1	A	506	LYS
1	A	509	ILE
1	A	536	GLU
1	A	541	LEU
1	B	220	ARG
1	B	226	VAL
1	B	227	GLN
1	B	236	ASP

*Continued on next page...*

*Continued from previous page...*

<b>Mol</b>	<b>Chain</b>	<b>Res</b>	<b>Type</b>
1	B	248	ARG
1	B	253	ARG
1	B	262	LEU
1	B	268	LEU
1	B	312	GLN
1	B	318	GLU
1	B	323	LEU
1	B	326	ARG
1	B	331	LYS
1	B	332	ILE
1	B	340	ARG
1	B	364	MET
1	B	368	MET
1	B	369	ARG
1	B	379	ILE
1	B	386	ARG
1	B	396	ARG
1	B	413	ARG
1	B	438	LEU
1	B	464	MET
1	B	479	MET
1	B	512	PHE
1	B	513	GLU
1	B	515	ARG
1	B	526	LYS
1	B	532	ARG
1	B	538	GLN
1	B	544	ARG
1	C	205	SER
1	C	206	HIS
1	C	224	LEU
1	C	238	ASP
1	C	239	CYS
1	C	240	LEU
1	C	246	ARG
1	C	251	GLU
1	C	254	LEU
1	C	262	LEU
1	C	280	GLU
1	C	312	GLN
1	C	313	ARG
1	C	323	LEU

*Continued on next page...*



*Continued from previous page...*

<b>Mol</b>	<b>Chain</b>	<b>Res</b>	<b>Type</b>
1	C	336	ARG
1	C	349	GLU
1	C	351	LYS
1	C	356	LEU
1	C	358	MET
1	C	364	MET
1	C	369	ARG
1	C	373	LEU
1	C	394	MET
1	C	403	MET
1	C	410	ARG
1	C	416	LYS
1	C	420	ASN
1	C	454	ARG
1	C	462	LEU
1	C	464	MET
1	C	479	MET
1	C	487	ARG
1	C	500	LEU
1	C	506	LYS
1	C	509	ILE
1	C	536	GLU
1	C	541	LEU
1	D	220	ARG
1	D	226	VAL
1	D	227	GLN
1	D	236	ASP
1	D	248	ARG
1	D	253	ARG
1	D	262	LEU
1	D	268	LEU
1	D	312	GLN
1	D	318	GLU
1	D	323	LEU
1	D	326	ARG
1	D	331	LYS
1	D	332	ILE
1	D	340	ARG
1	D	364	MET
1	D	368	MET
1	D	369	ARG
1	D	379	ILE

*Continued on next page...*

*Continued from previous page...*

<b>Mol</b>	<b>Chain</b>	<b>Res</b>	<b>Type</b>
1	D	386	ARG
1	D	396	ARG
1	D	413	ARG
1	D	438	LEU
1	D	464	MET
1	D	479	MET
1	D	512	PHE
1	D	513	GLU
1	D	515	ARG
1	D	526	LYS
1	D	532	ARG
1	D	538	GLN
1	D	544	ARG
2	E	22	LYS
2	E	33	LEU
2	E	40	LEU
2	E	43	ILE
2	E	48	MET
2	E	49	GLU
2	E	55	ILE
2	E	60	GLU
2	E	66	LEU
2	E	72	GLU
2	E	74	VAL
2	E	78	VAL
2	E	84	THR
2	E	86	ASP
2	E	89	LEU
2	E	93	VAL
2	F	22	LYS
2	F	33	LEU
2	F	40	LEU
2	F	43	ILE
2	F	48	MET
2	F	49	GLU
2	F	55	ILE
2	F	60	GLU
2	F	66	LEU
2	F	72	GLU
2	F	74	VAL
2	F	78	VAL
2	F	84	THR

*Continued on next page...*

*Continued from previous page...*

Mol	Chain	Res	Type
2	F	86	ASP
2	F	89	LEU
2	F	93	VAL

Sometimes sidechains can be flipped to improve hydrogen bonding and reduce clashes. All (11) such sidechains are listed below:

Mol	Chain	Res	Type
1	A	120	GLN
1	A	124	GLN
1	A	420	ASN
1	A	483	ASN
1	B	522	HIS
1	B	555	ASN
1	C	420	ASN
1	C	483	ASN
1	D	312	GLN
1	D	522	HIS
1	D	555	ASN

### 5.3.3 RNA [i](#)

There are no RNA molecules in this entry.

### 5.4 Non-standard residues in protein, DNA, RNA chains [i](#)

There are no non-standard protein/DNA/RNA residues in this entry.

### 5.5 Carbohydrates [i](#)

There are no monosaccharides in this entry.

### 5.6 Ligand geometry [i](#)

Of 7 ligands modelled in this entry, 6 are monoatomic - leaving 1 for Mogul analysis.

In the following table, the Counts columns list the number of bonds (or angles) for which Mogul statistics could be retrieved, the number of bonds (or angles) that are observed in the model and the number of bonds (or angles) that are defined in the Chemical Component Dictionary. The Link column lists molecule types, if any, to which the group is linked. The Z score for a bond

length (or angle) is the number of standard deviations the observed value is removed from the expected value. A bond length (or angle) with  $|Z| > 2$  is considered an outlier worth inspection. RMSZ is the root-mean-square of all Z scores of the bond lengths (or angles).

Mol	Type	Chain	Res	Link	Bond lengths			Bond angles		
					Counts	RMSZ	# Z  > 2	Counts	RMSZ	# Z  > 2
5	SF4	A	601	1	0,12,12	-	-	-		

In the following table, the Chirals column lists the number of chiral outliers, the number of chiral centers analysed, the number of these observed in the model and the number defined in the Chemical Component Dictionary. Similar counts are reported in the Torsion and Rings columns. '-' means no outliers of that kind were identified.

Mol	Type	Chain	Res	Link	Chirals	Torsions	Rings
5	SF4	A	601	1	-	-	0/6/5/5

There are no bond length outliers.

There are no bond angle outliers.

There are no chirality outliers.

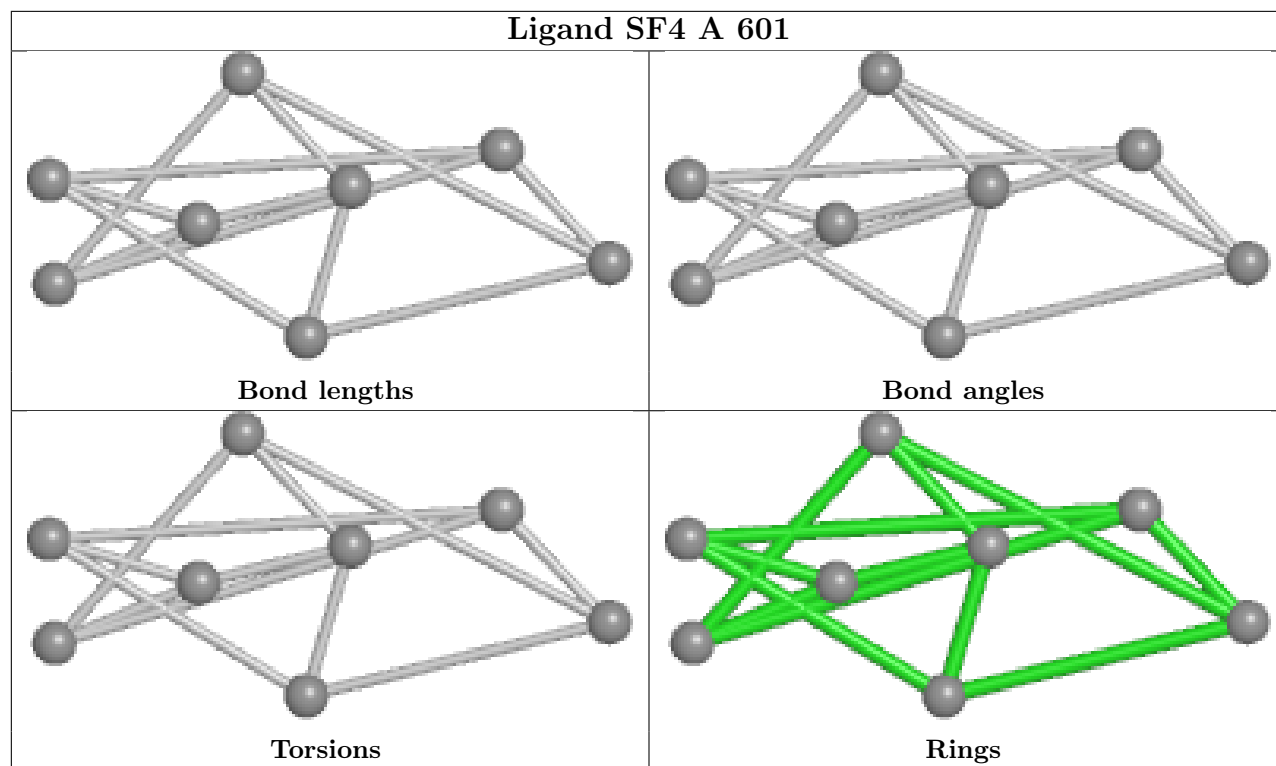
There are no torsion outliers.

There are no ring outliers.

1 monomer is involved in 1 short contact:

Mol	Chain	Res	Type	Clashes	Symm-Clashes
5	A	601	SF4	1	0

The following is a two-dimensional graphical depiction of Mogul quality analysis of bond lengths, bond angles, torsion angles, and ring geometry for all instances of the Ligand of Interest. In addition, ligands with molecular weight > 250 and outliers as shown on the validation Tables will also be included. For torsion angles, if less than 5% of the Mogul distribution of torsion angles is within 10 degrees of the torsion angle in question, then that torsion angle is considered an outlier. Any bond that is central to one or more torsion angles identified as an outlier by Mogul will be highlighted in the graph. For rings, the root-mean-square deviation (RMSD) between the ring in question and similar rings identified by Mogul is calculated over all ring torsion angles. If the average RMSD is greater than 60 degrees and the minimal RMSD between the ring in question and any Mogul-identified rings is also greater than 60 degrees, then that ring is considered an outlier. The outliers are highlighted in purple. The color gray indicates Mogul did not find sufficient equivalents in the CSD to analyse the geometry.



## 5.7 Other polymers [i](#)

There are no such residues in this entry.

## 5.8 Polymer linkage issues [i](#)

There are no chain breaks in this entry.

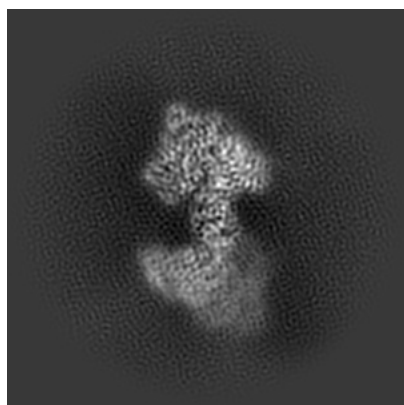
## 6 Map visualisation [i](#)

This section contains visualisations of the EMDB entry EMD-23840. These allow visual inspection of the internal detail of the map and identification of artifacts.

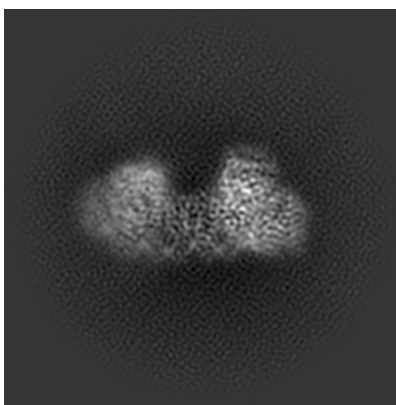
No raw map or half-maps were deposited for this entry and therefore no images, graphs, etc. pertaining to the raw map can be shown.

### 6.1 Orthogonal projections [i](#)

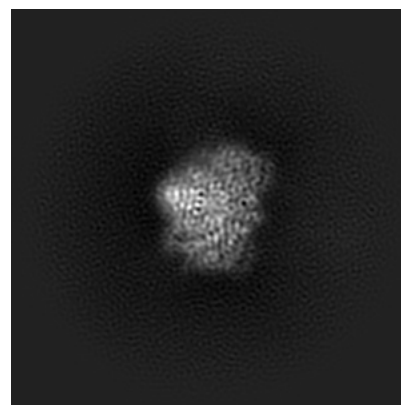
#### 6.1.1 Primary map



X



Y

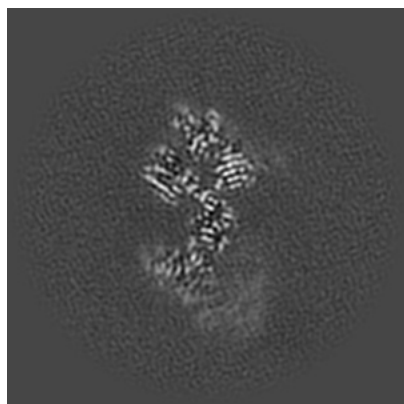


Z

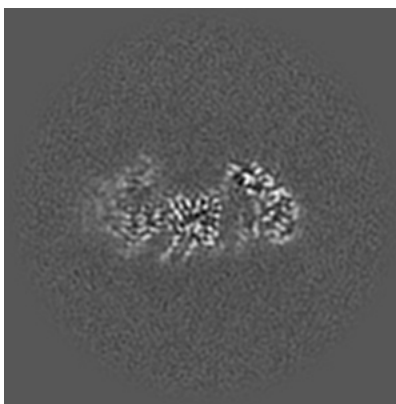
The images above show the map projected in three orthogonal directions.

### 6.2 Central slices [i](#)

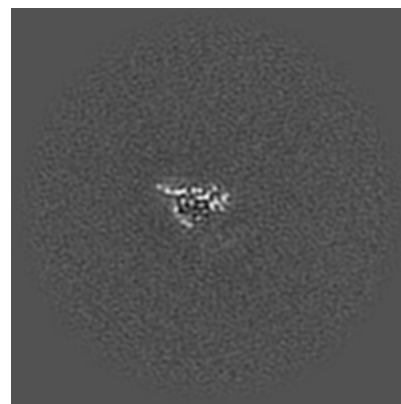
#### 6.2.1 Primary map



X Index: 110



Y Index: 110

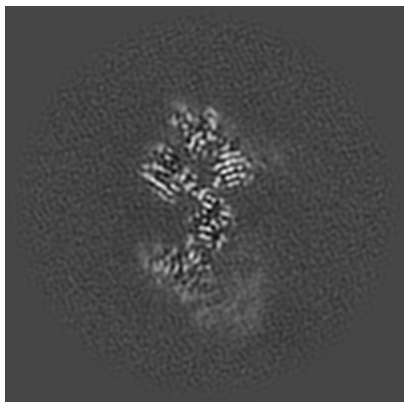


Z Index: 110

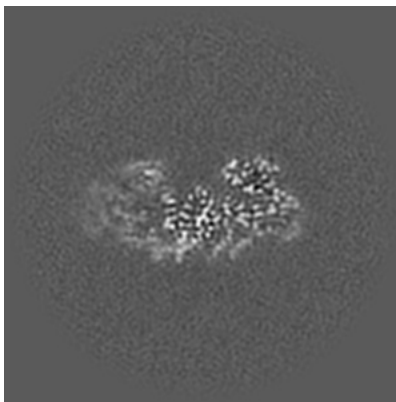
The images above show central slices of the map in three orthogonal directions.

## 6.3 Largest variance slices [i](#)

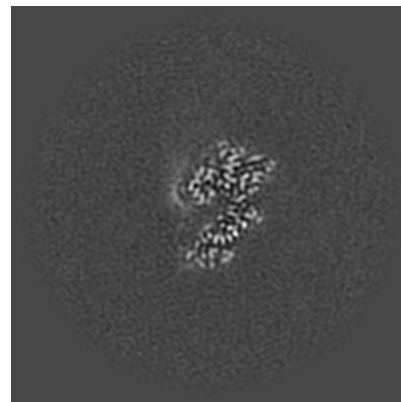
### 6.3.1 Primary map



X Index: 110



Y Index: 115



Z Index: 131

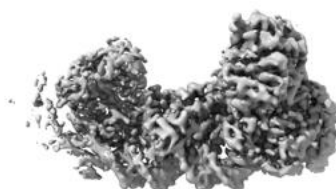
The images above show the largest variance slices of the map in three orthogonal directions.

## 6.4 Orthogonal surface views [i](#)

### 6.4.1 Primary map



X



Y



Z

The images above show the 3D surface view of the map at the recommended contour level 0.264. These images, in conjunction with the slice images, may facilitate assessment of whether an appropriate contour level has been provided.

## 6.5 Mask visualisation

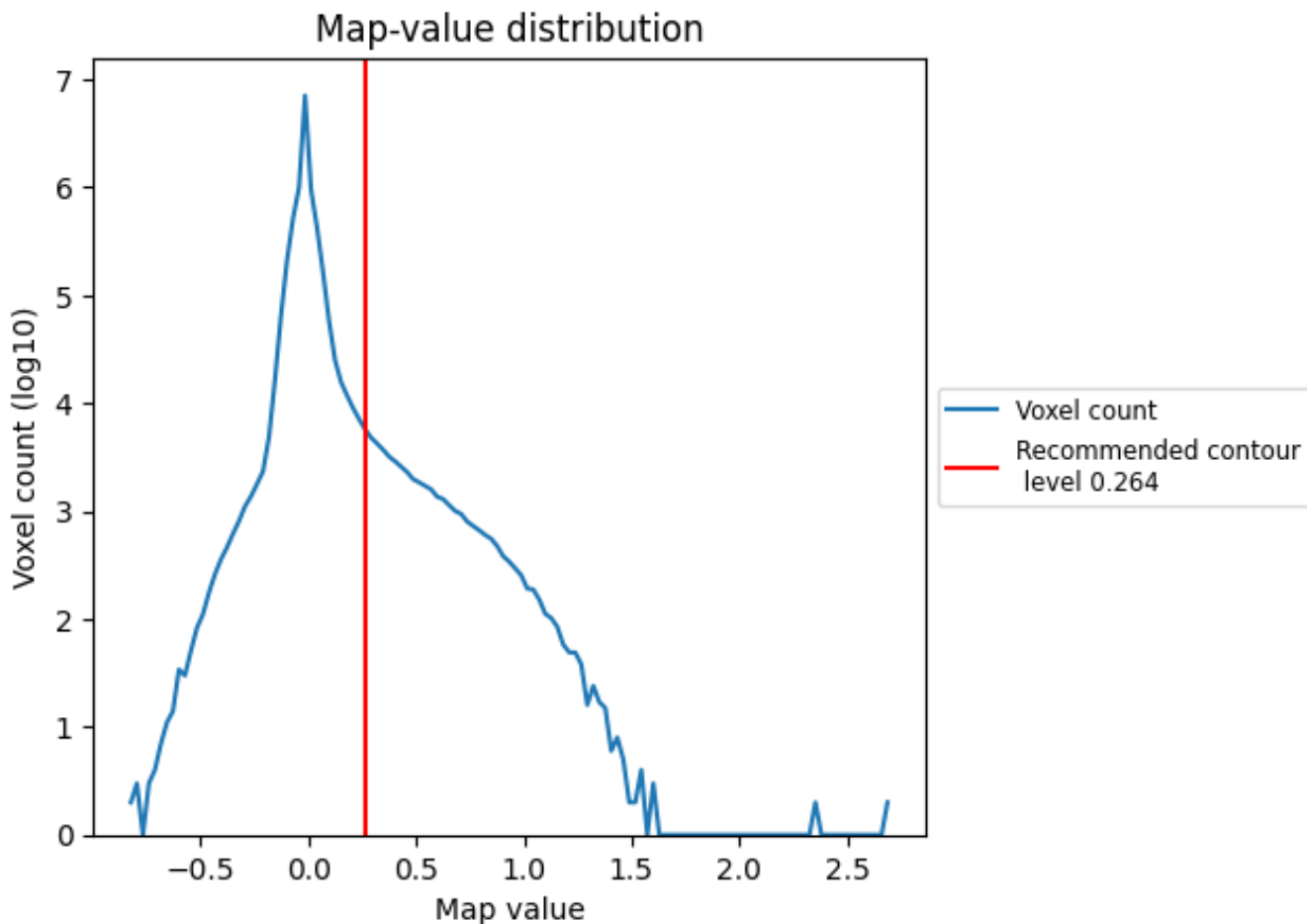
This section was not generated. No masks/segmentation were deposited.



## 7 Map analysis [i](#)

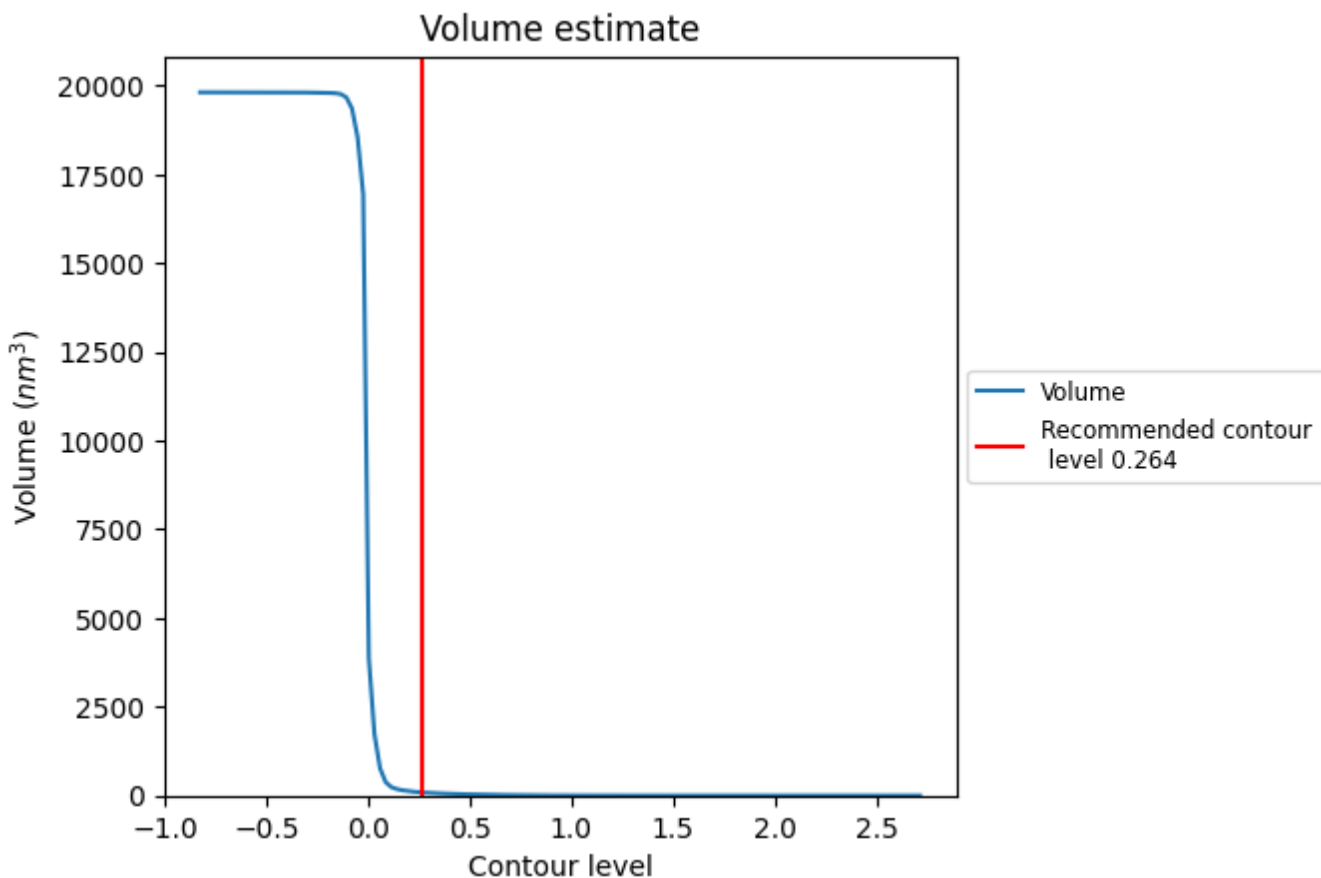
This section contains the results of statistical analysis of the map.

### 7.1 Map-value distribution [i](#)



The map-value distribution is plotted in 128 intervals along the x-axis. The y-axis is logarithmic. A spike in this graph at zero usually indicates that the volume has been masked.

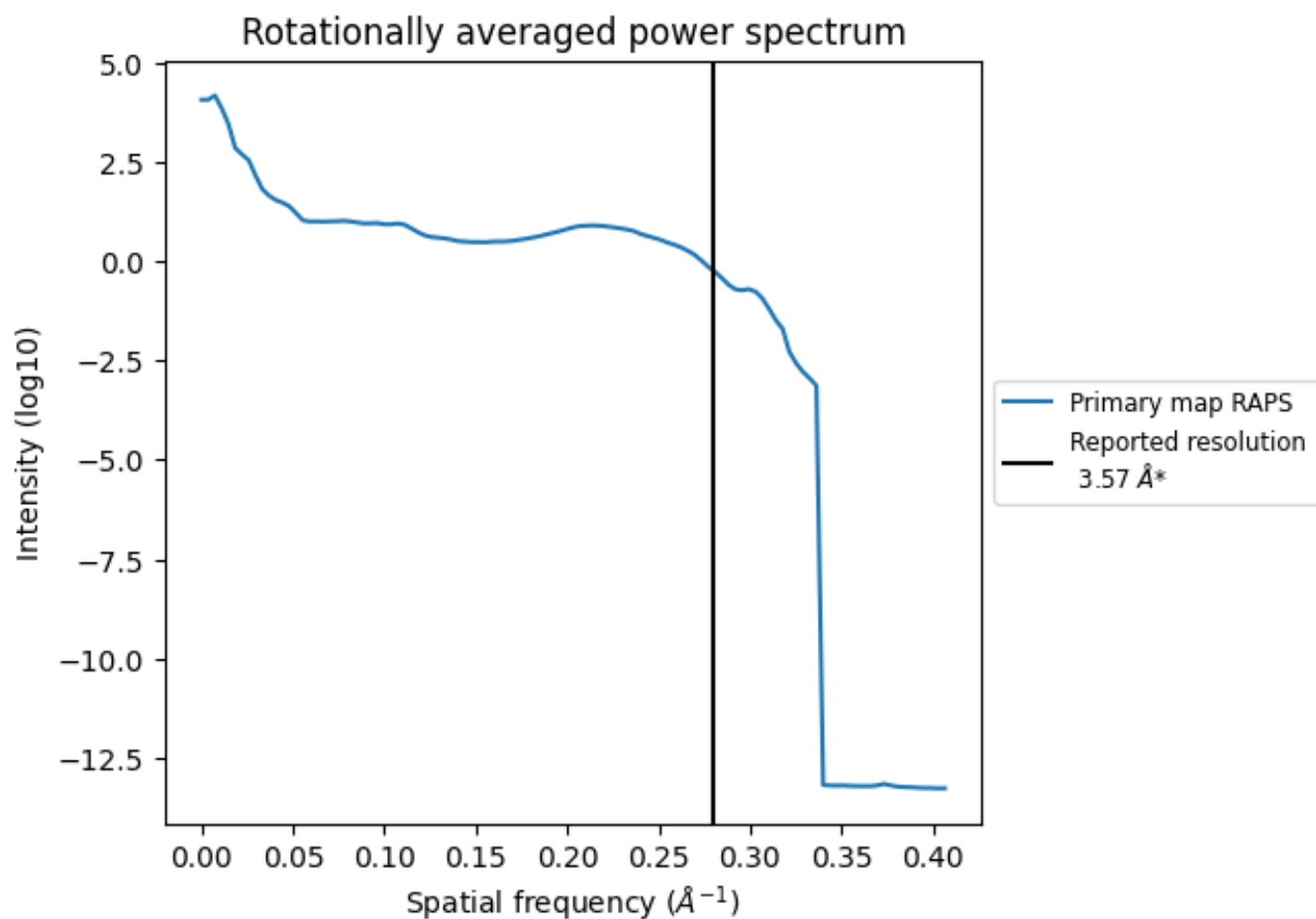
## 7.2 Volume estimate [\(i\)](#)



The volume at the recommended contour level is 90 nm<sup>3</sup>; this corresponds to an approximate mass of 81 kDa.

The volume estimate graph shows how the enclosed volume varies with the contour level. The recommended contour level is shown as a vertical line and the intersection between the line and the curve gives the volume of the enclosed surface at the given level.

### 7.3 Rotationally averaged power spectrum [i](#)



\*Reported resolution corresponds to spatial frequency of  $0.280 \text{\AA}^{-1}$

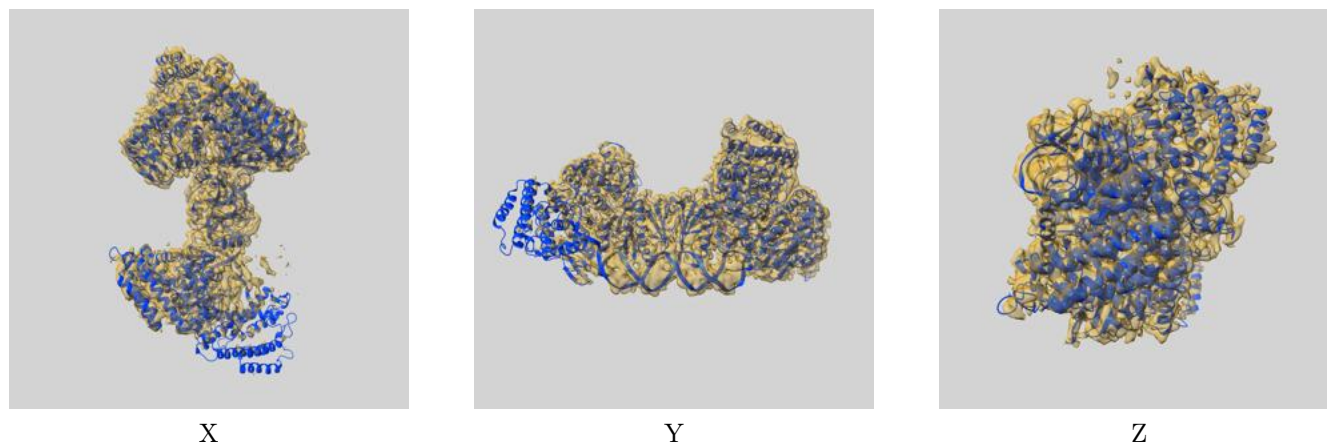
## 8 Fourier-Shell correlation

This section was not generated. No FSC curve or half-maps provided.

## 9 Map-model fit [i](#)

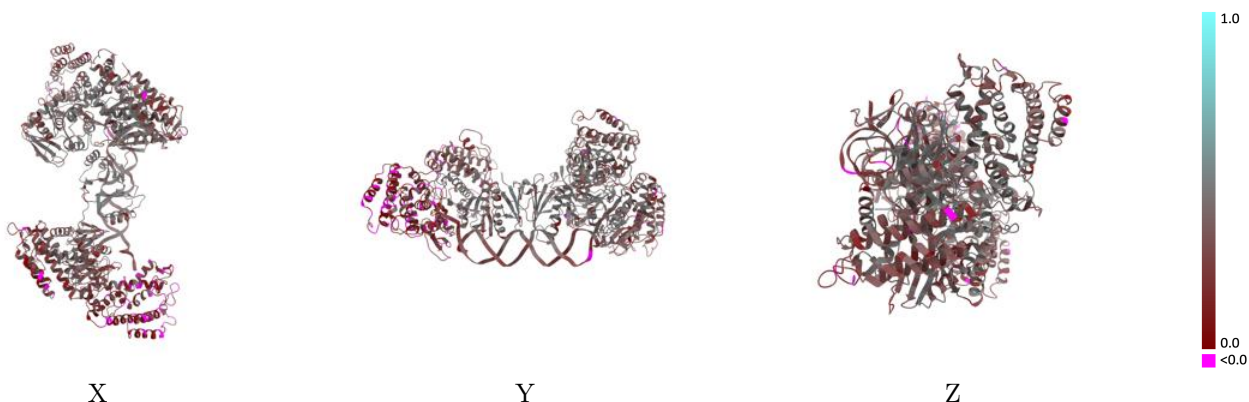
This section contains information regarding the fit between EMDB map EMD-23840 and PDB model 7MI5. Per-residue inclusion information can be found in section 3 on page 5.

### 9.1 Map-model overlay [i](#)



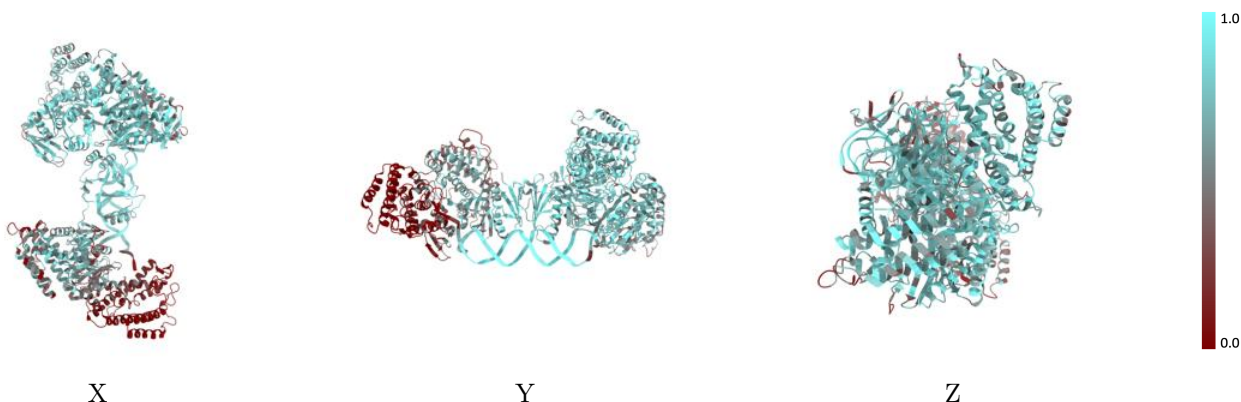
The images above show the 3D surface view of the map at the recommended contour level 0.264 at 50% transparency in yellow overlaid with a ribbon representation of the model coloured in blue. These images allow for the visual assessment of the quality of fit between the atomic model and the map.

## 9.2 Q-score mapped to coordinate model [i](#)



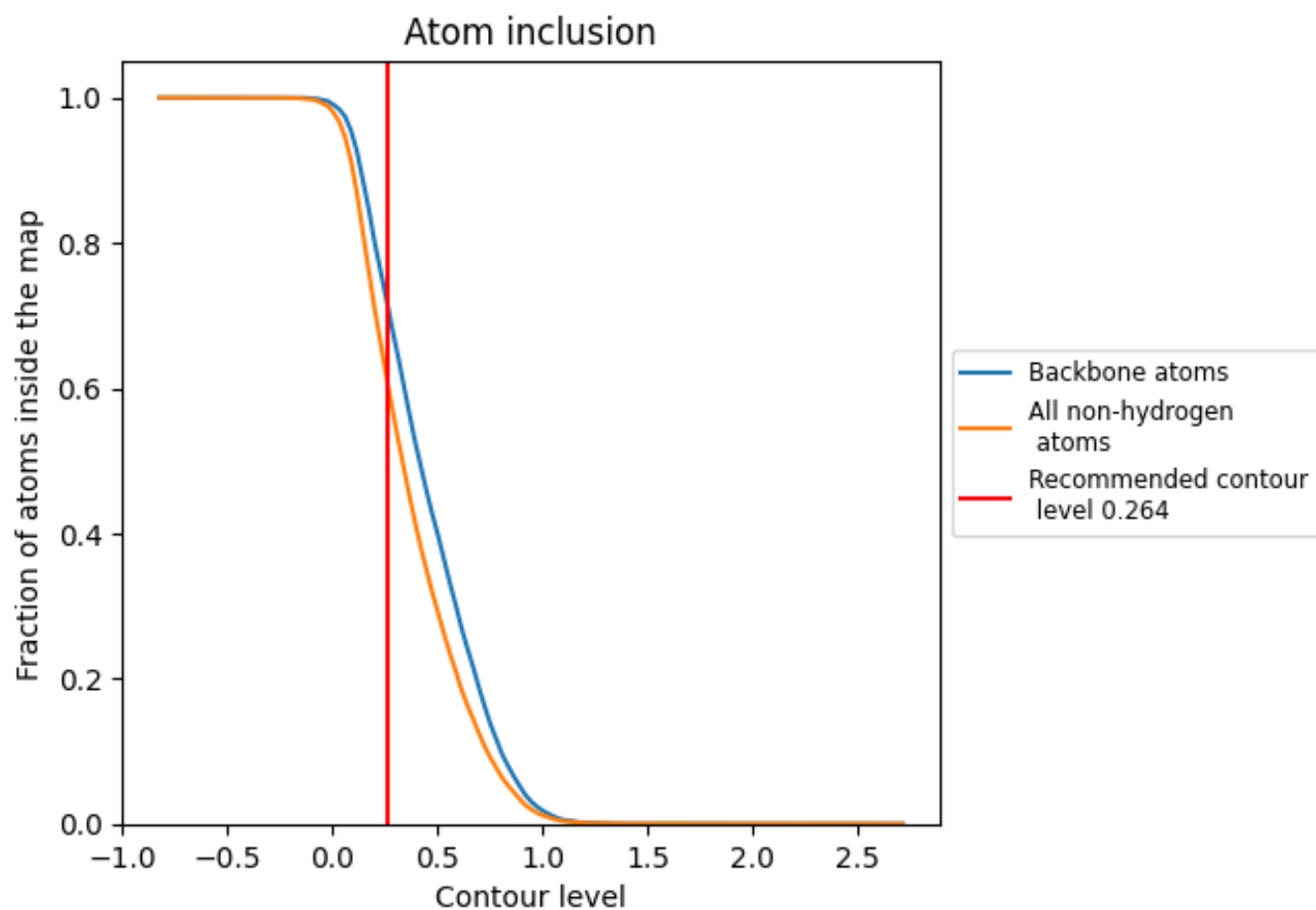
The images above show the model with each residue coloured according to its Q-score. This shows their resolvability in the map with higher Q-score values reflecting better resolvability. Please note: Q-score is calculating the resolvability of atoms, and thus high values are only expected at resolutions at which atoms can be resolved. Low Q-score values may therefore be expected for many entries.

## 9.3 Atom inclusion mapped to coordinate model [i](#)



The images above show the model with each residue coloured according to its atom inclusion. This shows to what extent they are inside the map at the recommended contour level (0.264).



















## 9.4 Atom inclusion [i](#)



At the recommended contour level, 71% of all backbone atoms, 60% of all non-hydrogen atoms, are inside the map.

## 9.5 Map-model fit summary

The table lists the average atom inclusion at the recommended contour level (0.264) and Q-score for the entire model and for each chain.

Chain	Atom inclusion	Q-score
All	 0.6034	 0.3180
A	 0.7502	 0.3860
B	 0.6980	 0.3380
C	 0.5554	 0.3110
D	 0.1418	 0.1400
E	 0.7817	 0.4140
F	 0.7660	 0.4120
G	 0.7618	 0.3100
H	 0.7897	 0.3360

