



Full wwPDB EM Validation Report ⓘ

Nov 20, 2022 – 02:46 PM EST

PDB ID : 7MIY
EMDB ID : EMD-23868
Title : Human N-type voltage-gated calcium channel Cav2.2 at 3.1 Angstrom resolution
Authors : Yan, N.; Gao, S.; Yao, X.
Deposited on : 2021-04-18
Resolution : 3.10 Å(reported)

This is a Full wwPDB EM Validation Report for a publicly released PDB entry.

We welcome your comments at validation@mail.wwpdb.org

A user guide is available at

<https://www.wwpdb.org/validation/2017/EMValidationReportHelp>

with specific help available everywhere you see the ⓘ symbol.

The types of validation reports are described at

<http://www.wwpdb.org/validation/2017/FAQs#types>.

The following versions of software and data (see [references ⓘ](#)) were used in the production of this report:

EMDB validation analysis : 0.0.1.dev43
Mogul : 1.8.5 (274361), CSD as541be (2020)
MolProbity : 4.02b-467
buster-report : 1.1.7 (2018)
Percentile statistics : 20191225.v01 (using entries in the PDB archive December 25th 2019)
MapQ : 1.9.9
Ideal geometry (proteins) : Engh & Huber (2001)
Ideal geometry (DNA, RNA) : Parkinson et al. (1996)
Validation Pipeline (wwPDB-VP) : 2.31.2

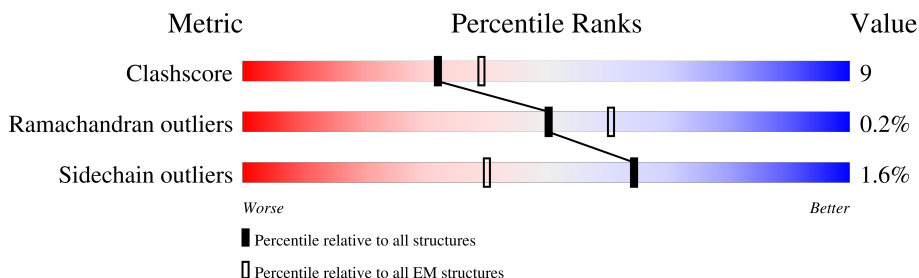
1 Overall quality at a glance

The following experimental techniques were used to determine the structure:

ELECTRON MICROSCOPY

The reported resolution of this entry is 3.10 Å.

Percentile scores (ranging between 0-100) for global validation metrics of the entry are shown in the following graphic. The table shows the number of entries on which the scores are based.



Metric	Whole archive (#Entries)	EM structures (#Entries)
Clashscore	158937	4297
Ramachandran outliers	154571	4023
Sidechain outliers	154315	3826

The table below summarises the geometric issues observed across the polymeric chains and their fit to the map. The red, orange, yellow and green segments of the bar indicate the fraction of residues that contain outliers for ≥ 3 , 2, 1 and 0 types of geometric quality criteria respectively. A grey segment represents the fraction of residues that are not modelled. The numeric value for each fraction is indicated below the corresponding segment, with a dot representing fractions $\leq 5\%$. The upper red bar (where present) indicates the fraction of residues that have poor fit to the EM map (all-atom inclusion $< 40\%$). The numeric value is given above the bar.

Mol	Chain	Length	Quality of chain
1	A	2339	
2	C	484	
3	D	1103	
4	B	3	
5	E	2	
5	G	2	
5	H	2	
6	F	4	

2 Entry composition [i](#)

There are 12 unique types of molecules in this entry. The entry contains 21483 atoms, of which 0 are hydrogens and 0 are deuteriums.

In the tables below, the AltConf column contains the number of residues with at least one atom in alternate conformation and the Trace column contains the number of residues modelled with at most 2 atoms.

- Molecule 1 is a protein called Voltage-dependent N-type calcium channel subunit alpha-1B.

Mol	Chain	Residues	Atoms					AltConf	Trace
			Total	C	N	O	S		
1	A	1326	10740	7049	1746	1868	77	1	0

- Molecule 2 is a protein called Voltage-dependent L-type calcium channel subunit beta-3.

Mol	Chain	Residues	Atoms					AltConf	Trace
			Total	C	N	O	S		
2	C	324	2575	1619	467	479	10	0	0

- Molecule 3 is a protein called Voltage-dependent calcium channel subunit alpha-2/delta-1.

Mol	Chain	Residues	Atoms					AltConf	Trace
			Total	C	N	O	S		
3	D	948	7570	4803	1269	1467	31	0	0

- Molecule 4 is an oligosaccharide called 2-acetamido-2-deoxy-beta-D-glucopyranose-(1-4)-2-acetamido-2-deoxy-beta-D-glucopyranose-(1-4)-2-acetamido-2-deoxy-beta-D-glucopyranose.



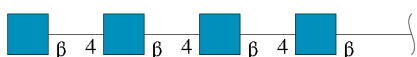
Mol	Chain	Residues	Atoms				AltConf	Trace
			Total	C	N	O		
4	B	3	42	24	3	15	0	0

- Molecule 5 is an oligosaccharide called 2-acetamido-2-deoxy-beta-D-glucopyranose-(1-4)-2-acetamido-2-deoxy-beta-D-glucopyranose.



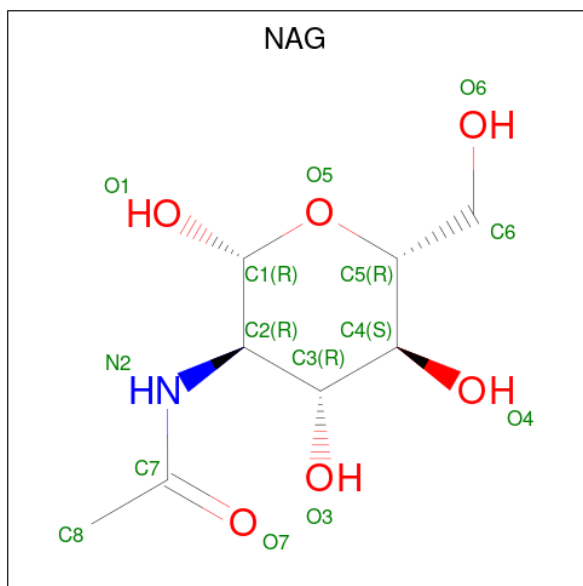
Mol	Chain	Residues	Atoms				AltConf	Trace
5	E	2	Total	C	N	O	0	0
			28	16	2	10		
5	G	2	Total	C	N	O	0	0
			28	16	2	10		
5	H	2	Total	C	N	O	0	0
			28	16	2	10		

- Molecule 6 is an oligosaccharide called 2-acetamido-2-deoxy-beta-D-glucopyranose-(1-4)-2-acetamido-2-deoxy-beta-D-glucopyranose-(1-4)-2-acetamido-2-deoxy-beta-D-glucopyranose-(1-4)-2-acetamido-2-deoxy-beta-D-glucopyranose.



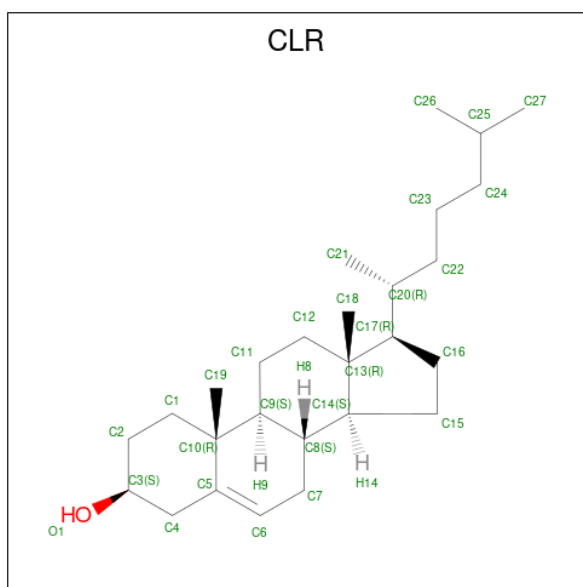
Mol	Chain	Residues	Atoms				AltConf	Trace
6	F	4	Total	C	N	O	0	0
			56	32	4	20		

- Molecule 7 is 2-acetamido-2-deoxy-beta-D-glucopyranose (three-letter code: NAG) (formula: C₈H₁₅NO₆).



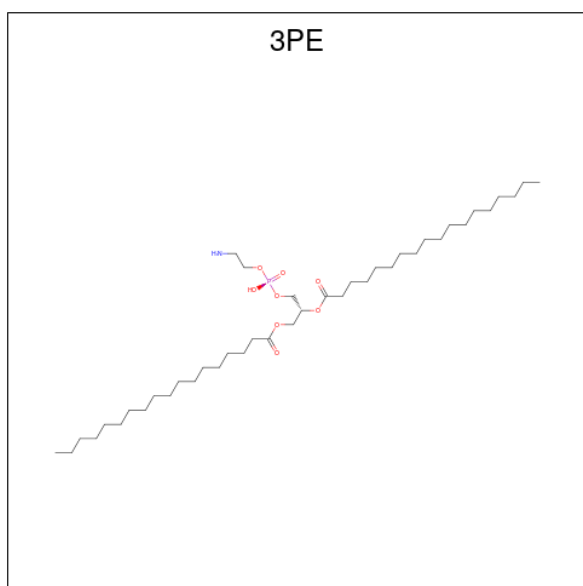
Mol	Chain	Residues	Atoms				AltConf
7	A	1	Total	C	N	O	0
			14	8	1	5	
7	D	1	Total	C	N	O	0
			28	16	2	10	

Continued on next page...



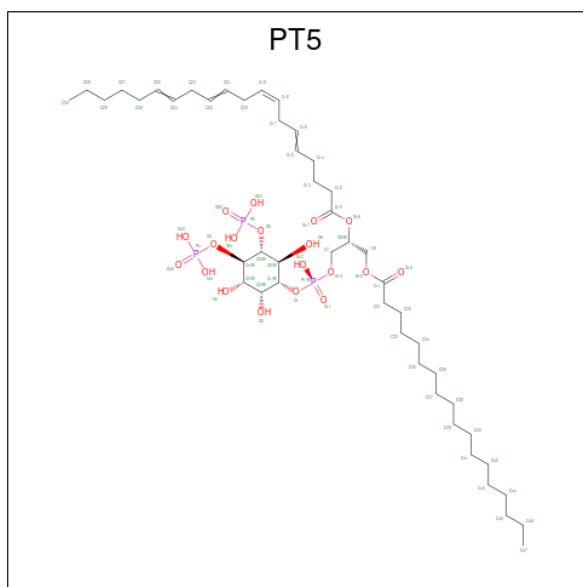
Mol	Chain	Residues	Atoms			AltConf
10	A	1	Total	C	O	0
			112	108	4	
10	A	1	Total	C	O	0
			112	108	4	
10	A	1	Total	C	O	0
			112	108	4	
10	A	1	Total	C	O	0
			112	108	4	

- Molecule 11 is 1,2-Distearoyl-sn-glycerophosphoethanolamine (three-letter code: 3PE) (formula: $C_{41}H_{82}NO_8P$).

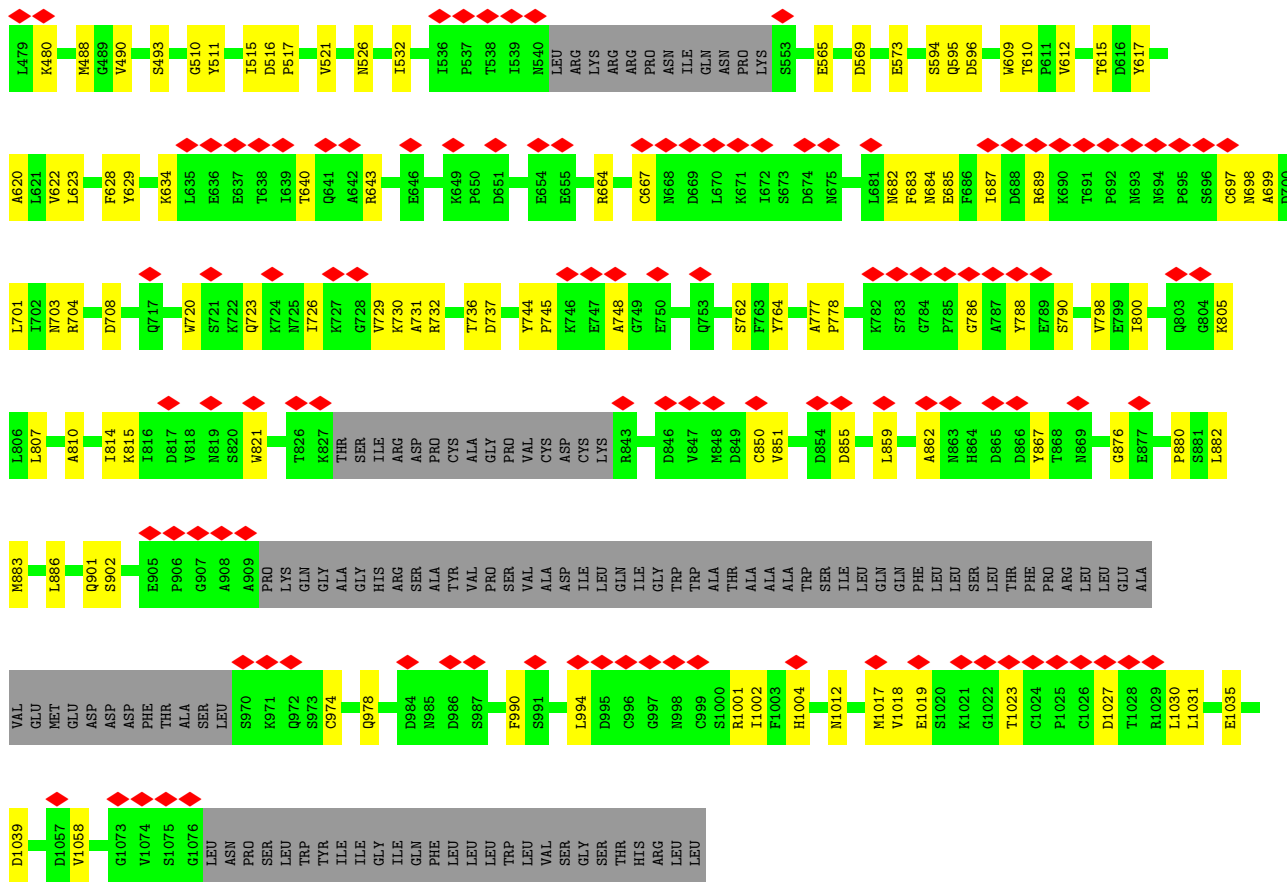


Mol	Chain	Residues	Atoms					AltConf
			Total	C	N	O	P	
11	A	1	91	71	2	16	2	0
11	A	1	91	71	2	16	2	0

- Molecule 12 is [(2R)-1-octadecanoyloxy-3-[oxidanyl-[(1R,2R,3S,4R,5R,6S)-2,3,6-tris(oxidanyl)-4,5-diphosphonoxy-cyclohexyl]oxy-phosphoryl]oxy-propan-2-yl] (8Z)-icosa-5,8,11,14-tetraenoate (three-letter code: PT5) (formula: C₄₇H₈₅O₁₉P₃) (labeled as "Ligand of Interest" by depositor).



Mol	Chain	Residues	Atoms				AltConf
			Total	C	O	P	
12	A	1	64	42	19	3	0



• Molecule 4: 2-acetamido-2-deoxy-beta-D-glucopyranose-(1-4)-2-acetamido-2-deoxy-beta-D-glucopyranose-(1-4)-2-acetamido-2-deoxy-beta-D-glucopyranose



• Molecule 5: 2-acetamido-2-deoxy-beta-D-glucopyranose-(1-4)-2-acetamido-2-deoxy-beta-D-glucopyranose



• Molecule 5: 2-acetamido-2-deoxy-beta-D-glucopyranose-(1-4)-2-acetamido-2-deoxy-beta-D-glucopyranose






- Molecule 5: 2-acetamido-2-deoxy-beta-D-glucopyranose-(1-4)-2-acetamido-2-deoxy-beta-D-glucopyranose

Chain H:  100%



- Molecule 6: 2-acetamido-2-deoxy-beta-D-glucopyranose-(1-4)-2-acetamido-2-deoxy-beta-D-glucopyranose-(1-4)-2-acetamido-2-deoxy-beta-D-glucopyranose

Chain F:  25% 25% 25% 50%



4 Experimental information i

Property	Value	Source
EM reconstruction method	SINGLE PARTICLE	Depositor
Imposed symmetry	POINT, Not provided	
Number of particles used	56615	Depositor
Resolution determination method	FSC 0.143 CUT-OFF	Depositor
CTF correction method	PHASE FLIPPING AND AMPLITUDE CORRECTION	Depositor
Microscope	FEI TITAN KRIOS	Depositor
Voltage (kV)	300	Depositor
Electron dose ($e^-/\text{\AA}^2$)	50	Depositor
Minimum defocus (nm)	Not provided	
Maximum defocus (nm)	Not provided	
Magnification	Not provided	
Image detector	GATAN K2 SUMMIT (4k x 4k)	Depositor
Maximum map value	0.165	Depositor
Minimum map value	-0.105	Depositor
Average map value	0.000	Depositor
Map value standard deviation	0.005	Depositor
Recommended contour level	0.023	Depositor
Map size (Å)	311.91998, 311.91998, 311.91998	wwPDB
Map dimensions	280, 280, 280	wwPDB
Map angles (°)	90.0, 90.0, 90.0	wwPDB
Pixel spacing (Å)	1.114, 1.114, 1.114	Depositor

5 Model quality [i](#)

5.1 Standard geometry [i](#)

Bond lengths and bond angles in the following residue types are not validated in this section: NAG, 3PE, CA, PT5, CLR, Y01

The Z score for a bond length (or angle) is the number of standard deviations the observed value is removed from the expected value. A bond length (or angle) with $|Z| > 5$ is considered an outlier worth inspection. RMSZ is the root-mean-square of all Z scores of the bond lengths (or angles).

Mol	Chain	Bond lengths		Bond angles	
		RMSZ	# Z >5	RMSZ	# Z >5
1	A	0.25	0/11002	0.45	0/14897
2	C	0.25	0/2624	0.50	0/3544
3	D	0.25	0/7728	0.47	0/10477
All	All	0.25	0/21354	0.47	0/28918

There are no bond length outliers.

There are no bond angle outliers.

There are no chirality outliers.

There are no planarity outliers.

5.2 Too-close contacts [i](#)

In the following table, the Non-H and H(model) columns list the number of non-hydrogen atoms and hydrogen atoms in the chain respectively. The H(added) column lists the number of hydrogen atoms added and optimized by MolProbity. The Clashes column lists the number of clashes within the asymmetric unit, whereas Symm-Clashes lists symmetry-related clashes.

Mol	Chain	Non-H	H(model)	H(added)	Clashes	Symm-Clashes
1	A	10740	0	10851	205	0
2	C	2575	0	2619	53	0
3	D	7570	0	7368	103	0
4	B	42	0	37	1	0
5	E	28	0	25	0	0
5	G	28	0	25	1	0
5	H	28	0	25	0	0
6	F	56	0	49	5	0
7	A	14	0	13	1	0
7	D	28	0	26	2	0

Continued on next page...

Continued from previous page...

Mol	Chain	Non-H	H(model)	H(added)	Clashes	Symm-Clashes
8	A	1	0	0	0	0
8	D	1	0	0	0	0
9	A	105	0	147	52	0
10	A	112	0	184	13	0
11	A	91	0	139	4	0
12	A	64	0	67	8	0
All	All	21483	0	21575	405	0

The all-atom clashscore is defined as the number of clashes found per 1000 atoms (including hydrogen atoms). The all-atom clashscore for this structure is 9.

All (405) close contacts within the same asymmetric unit are listed below, sorted by their clash magnitude.

Atom-1	Atom-2	Interatomic distance (Å)	Clash overlap (Å)
2:C:203:PHE:CE1	2:C:346:CYS:SG	2.42	1.13
9:A:2403:Y01:HAO2	9:A:2403:Y01:HAA1	1.36	1.07
2:C:203:PHE:CD1	2:C:346:CYS:SG	2.47	1.07
9:A:2407:Y01:HAL1	10:A:2408:CLR:H193	1.41	1.01
9:A:2403:Y01:HAE2	9:A:2403:Y01:HAC1	1.38	1.01
1:A:95:PRO:HB2	1:A:96:PRO:HD3	1.44	0.98
9:A:2407:Y01:HAL1	10:A:2408:CLR:C19	1.99	0.93
1:A:1169:ALA:CB	9:A:2407:Y01:HAD3	2.00	0.90
9:A:2403:Y01:HAO2	9:A:2403:Y01:CAA	2.04	0.88
1:A:394:LYS:HD2	1:A:394:LYS:O	1.75	0.86
1:A:1140:ARG:HG3	1:A:1203:ILE:HG22	1.55	0.86
1:A:1716:ARG:HH22	1:A:1724:HIS:HB2	1.42	0.85
1:A:584:ARG:HG2	1:A:584:ARG:HH11	1.41	0.83
1:A:1394:ILE:HG13	9:A:2403:Y01:CAD	2.09	0.83
1:A:1480:MET:HE2	1:A:1480:MET:HA	1.59	0.82
9:A:2407:Y01:CAJ	9:A:2407:Y01:HAP1	2.10	0.81
1:A:1394:ILE:HG13	9:A:2403:Y01:HAD2	1.63	0.81
9:A:2403:Y01:HAC1	9:A:2403:Y01:CAE	2.10	0.80
1:A:1169:ALA:HB2	9:A:2407:Y01:HAD3	1.63	0.79
1:A:402:GLU:HA	1:A:405:ARG:HG2	1.66	0.78
1:A:476:ARG:HB2	1:A:535:GLY:O	1.83	0.78
1:A:1444:ILE:HG12	1:A:1832:LEU:HD11	1.69	0.75
3:D:699:ALA:O	3:D:703:ASN:ND2	2.19	0.75
1:A:1352:LEU:HD13	9:A:2406:Y01:CAK	2.18	0.74
9:A:2403:Y01:HAA1	9:A:2403:Y01:CAO	2.17	0.73
1:A:1144:HIS:O	1:A:1144:HIS:ND1	2.21	0.73
12:A:2412:PT5:O12	12:A:2412:PT5:O6	2.05	0.73

Continued on next page...

Continued from previous page...

Atom-1	Atom-2	Interatomic distance (Å)	Clash overlap (Å)
3:D:357:ILE:HG22	3:D:383:ARG:HB2	1.70	0.73
1:A:1352:LEU:HD13	9:A:2406:Y01:HAK2	1.69	0.72
9:A:2407:Y01:HAP1	9:A:2407:Y01:HAJ1	1.70	0.71
2:C:65:ARG:HH22	2:C:90:LYS:HE2	1.54	0.71
2:C:179:PRO:HG2	2:C:287:PRO:HB3	1.72	0.70
1:A:740:GLU:HG2	2:C:335:VAL:HG12	1.72	0.70
2:C:65:ARG:NH1	2:C:66:THR:O	2.24	0.70
1:A:400:LEU:HD21	1:A:470:MET:HG3	1.74	0.68
1:A:1508:ILE:HG12	1:A:1550:ILE:HD11	1.75	0.68
1:A:1743:ARG:HA	1:A:1789:VAL:HG13	1.76	0.68
1:A:1828:VAL:HG11	1:A:1832:LEU:HD13	1.76	0.67
1:A:1483:LEU:HD12	1:A:1483:LEU:O	1.93	0.67
1:A:739:LYS:NZ	2:C:331:GLU:OE1	2.27	0.67
1:A:1402:VAL:HG22	12:A:2412:PT5:H41	1.77	0.67
2:C:216:ARG:HA	2:C:270:ASP:HB2	1.77	0.66
1:A:584:ARG:HG2	1:A:584:ARG:NH1	2.03	0.66
1:A:95:PRO:CB	1:A:96:PRO:HD3	2.22	0.66
9:A:2407:Y01:HAB2	9:A:2407:Y01:HAO2	1.78	0.65
3:D:745:PRO:HB2	3:D:748:ALA:HB3	1.78	0.65
3:D:851:VAL:HG12	3:D:862:ALA:HA	1.78	0.64
3:D:730:LYS:NZ	3:D:788:TYR:O	2.31	0.64
1:A:381:ILE:HG23	2:C:299:VAL:HG22	1.80	0.64
1:A:1221:ILE:O	1:A:1225:ILE:HD12	1.97	0.64
1:A:1169:ALA:HB1	9:A:2407:Y01:HAD3	1.79	0.63
1:A:1403:PHE:HB2	1:A:1404:PRO:CD	2.28	0.63
1:A:104:THR:CG2	1:A:141:PHE:CE1	2.81	0.63
3:D:685:GLU:O	3:D:689:ARG:HB2	1.99	0.63
1:A:476:ARG:CB	1:A:535:GLY:O	2.46	0.62
1:A:1800:ARG:NH1	1:A:1804:GLU:O	2.32	0.62
9:A:2406:Y01:HAN2	9:A:2406:Y01:CAC	2.30	0.62
2:C:91:ASP:OD1	2:C:110:LYS:NZ	2.26	0.62
3:D:629:TYR:HB2	3:D:807:LEU:HD21	1.81	0.62
3:D:737:ASP:OD1	3:D:764:TYR:OH	2.14	0.62
1:A:1378:THR:O	1:A:1389:ARG:NH1	2.33	0.62
9:A:2407:Y01:CAL	10:A:2408:CLR:C19	2.77	0.62
1:A:86:LYS:HG2	1:A:86:LYS:O	1.99	0.62
3:D:594:SER:OG	3:D:596:ASP:O	2.18	0.62
1:A:1484:ASN:O	1:A:1484:ASN:ND2	2.33	0.61
9:A:2406:Y01:HAC1	9:A:2406:Y01:HAU2	1.82	0.61
3:D:516:ASP:OD1	3:D:517:PRO:HD2	2.00	0.61
1:A:479:VAL:HG12	1:A:531:LEU:HD21	1.82	0.61

Continued on next page...

Continued from previous page...

Atom-1	Atom-2	Interatomic distance (Å)	Clash overlap (Å)
1:A:1169:ALA:CB	9:A:2407:Y01:CAD	2.76	0.61
2:C:177:MET:H	2:C:261:ALA:HB1	1.65	0.61
3:D:215:ALA:HB2	3:D:238:VAL:HG21	1.83	0.61
1:A:1394:ILE:CG1	9:A:2403:Y01:HAD2	2.30	0.61
2:C:58:LYS:HE2	2:C:97:GLU:HB3	1.83	0.61
2:C:157:LEU:HD23	2:C:162:GLN:HG3	1.83	0.61
1:A:1488:LEU:HD11	1:A:1571:ARG:HD2	1.83	0.60
1:A:1721:LEU:HD13	1:A:1724:HIS:HB3	1.82	0.60
1:A:394:LYS:HD2	1:A:394:LYS:C	2.17	0.60
1:A:1565:SER:OG	1:A:1568:ARG:NH2	2.34	0.60
3:D:855:ASP:HB2	3:D:1012:ASN:HB2	1.83	0.60
1:A:95:PRO:HB2	1:A:96:PRO:CD	2.25	0.60
2:C:258:PHE:O	2:C:262:LYS:HG3	2.01	0.59
3:D:58:VAL:HG23	3:D:800:ILE:HG12	1.83	0.59
9:A:2407:Y01:HAO2	9:A:2407:Y01:CAB	2.31	0.59
1:A:93:GLU:OE1	1:A:93:GLU:HA	2.02	0.59
1:A:1397:VAL:HG21	9:A:2403:Y01:HAQ1	1.83	0.59
3:D:442:LYS:NZ	3:D:465:PRO:O	2.36	0.59
4:B:2:NAG:H83	4:B:2:NAG:H3	1.83	0.59
2:C:93:LEU:HG	2:C:118:ILE:HD12	1.85	0.59
1:A:1785:GLU:HG2	1:A:1787:MET:H	1.66	0.58
3:D:880:PRO:HB3	3:D:1030:LEU:HA	1.85	0.58
1:A:489:LEU:HD21	1:A:585:ILE:HD13	1.86	0.58
1:A:1289:TYR:CE1	1:A:1403:PHE:HD2	2.21	0.58
1:A:94:TRP:CD1	1:A:94:TRP:N	2.72	0.58
9:A:2407:Y01:HAU2	9:A:2407:Y01:HAC1	1.85	0.58
1:A:1457:ARG:HA	1:A:1462:TYR:HB2	1.86	0.58
1:A:1639:ARG:NH2	1:A:1671:ASP:OD2	2.37	0.57
1:A:599:VAL:HG11	12:A:2412:PT5:H19	1.86	0.57
2:C:337:LEU:HD22	2:C:345:ALA:HB1	1.86	0.57
1:A:497:LEU:HD12	9:A:2406:Y01:HAC3	1.85	0.57
2:C:125:GLU:HG3	2:C:128:ARG:HH21	1.69	0.57
3:D:708:ASP:HB3	3:D:736:THR:HG21	1.86	0.57
1:A:571:SER:OG	1:A:1302:GLN:NE2	2.39	0.56
1:A:1480:MET:HA	1:A:1480:MET:CE	2.32	0.56
2:C:209:ASP:O	2:C:211:ARG:NH1	2.38	0.56
3:D:42:GLU:HA	3:D:45:VAL:HG12	1.85	0.56
1:A:1155:VAL:O	1:A:1159:VAL:HG23	2.06	0.56
3:D:469:ILE:HB	3:D:472:GLN:HG2	1.87	0.56
1:A:1352:LEU:HD13	9:A:2406:Y01:HAK1	1.88	0.56
3:D:704:ARG:NH1	3:D:708:ASP:OD2	2.39	0.56

Continued on next page...

Continued from previous page...

Atom-1	Atom-2	Interatomic distance (Å)	Clash overlap (Å)
6:F:4:NAG:H3	6:F:4:NAG:H83	1.87	0.56
3:D:59:ASP:OD1	3:D:60:ILE:N	2.39	0.56
3:D:157:ARG:HH12	3:D:224:VAL:HG12	1.70	0.55
7:D:2002:NAG:H83	7:D:2002:NAG:H3	1.88	0.55
1:A:236:MET:HG2	11:A:2411:3PE:H3F2	1.88	0.55
1:A:400:LEU:HD21	1:A:470:MET:SD	2.47	0.55
3:D:1019:GLU:HB3	3:D:1023:THR:HG21	1.88	0.55
1:A:89:LYS:HA	1:A:93:GLU:HG2	1.89	0.55
9:A:2403:Y01:CAC	9:A:2403:Y01:HAU2	2.36	0.55
1:A:476:ARG:CG	1:A:535:GLY:O	2.55	0.55
2:C:309:LYS:HA	2:C:312:MET:HG2	1.88	0.55
3:D:157:ARG:NH2	3:D:222:PRO:O	2.37	0.55
1:A:727:GLU:OE2	1:A:759:GLN:NE2	2.40	0.54
1:A:1255:VAL:HG11	1:A:1616:ILE:HG13	1.88	0.54
1:A:1367:TRP:CD1	1:A:1368:PRO:HD3	2.41	0.54
1:A:1744:ILE:HG22	1:A:1745:SER:H	1.73	0.54
1:A:104:THR:HG21	1:A:141:PHE:CE1	2.43	0.54
1:A:546:PHE:HZ	1:A:581:ARG:HA	1.73	0.54
9:A:2403:Y01:HAE2	9:A:2403:Y01:CAC	2.23	0.54
1:A:492:VAL:HG11	1:A:581:ARG:HB2	1.89	0.54
1:A:1488:LEU:CD1	1:A:1571:ARG:HD2	2.38	0.54
1:A:1466:THR:O	1:A:1470:SER:OG	2.18	0.54
9:A:2406:Y01:CAC	9:A:2406:Y01:CAN	2.86	0.54
2:C:188:LYS:NZ	2:C:197:GLN:OE1	2.29	0.54
3:D:252:LYS:HD3	3:D:357:ILE:HD11	1.89	0.54
1:A:277:CYS:SG	1:A:283:CYS:SG	3.06	0.54
12:A:2412:PT5:HO6	12:A:2412:PT5:P1	2.28	0.54
1:A:152:LEU:HB2	1:A:161:TYR:HB2	1.90	0.53
1:A:396:GLU:OE2	2:C:307:ARG:NH2	2.42	0.53
1:A:106:ILE:O	1:A:110:ILE:HG12	2.09	0.53
1:A:1169:ALA:HB1	9:A:2407:Y01:CAD	2.37	0.53
1:A:1417:ILE:HG13	1:A:1418:THR:HG23	1.91	0.53
3:D:73:ASN:N	3:D:628:PHE:O	2.40	0.53
1:A:143:PHE:O	1:A:147:ILE:HG12	2.09	0.53
1:A:634:GLN:OE1	1:A:676:GLN:NE2	2.40	0.53
6:F:3:NAG:H83	6:F:3:NAG:H3	1.90	0.53
12:A:2412:PT5:O6	12:A:2412:PT5:O53	2.27	0.53
3:D:115:GLU:OE2	6:F:3:NAG:O3	2.27	0.53
3:D:421:ILE:H	3:D:421:ILE:HD12	1.74	0.53
1:A:1489:MET:HG3	10:A:2405:CLR:H213	1.91	0.53
1:A:1222:LEU:HD11	1:A:1256:LEU:HD13	1.91	0.53

Continued on next page...

Continued from previous page...

Atom-1	Atom-2	Interatomic distance (Å)	Clash overlap (Å)
1:A:335:TYR:HB2	11:A:2411:3PE:H341	1.91	0.52
3:D:79:VAL:HG12	3:D:610:THR:HG22	1.91	0.52
1:A:101:ILE:HG13	1:A:144:GLU:HG3	1.92	0.52
1:A:1179:ARG:HB2	10:A:2408:CLR:H191	1.91	0.52
9:A:2403:Y01:CAJ	9:A:2403:Y01:HAP1	2.39	0.52
3:D:103:GLU:HG2	3:D:192:VAL:HG21	1.92	0.52
1:A:400:LEU:HD21	1:A:470:MET:CG	2.39	0.52
1:A:756:ALA:HA	1:A:759:GLN:HE22	1.75	0.52
2:C:229:LEU:HB3	2:C:232:PRO:HG3	1.92	0.52
3:D:398:PRO:O	3:D:402:MET:HG3	2.10	0.51
1:A:1403:PHE:CB	1:A:1404:PRO:CD	2.88	0.51
3:D:480:LYS:HD3	6:F:1:NAG:H2	1.92	0.51
1:A:1627:ASP:O	1:A:1630:THR:OG1	2.28	0.51
9:A:2407:Y01:CAL	10:A:2408:CLR:H192	2.40	0.51
3:D:684:ASN:OD1	3:D:685:GLU:N	2.43	0.51
1:A:118:LEU:HD23	3:D:263:SER:HB3	1.93	0.51
1:A:1240:LYS:HG2	1:A:1241:GLY:H	1.76	0.51
1:A:92:THR:HA	1:A:94:TRP:HE1	1.74	0.51
1:A:255:PRO:HA	1:A:281:THR:HG22	1.91	0.51
3:D:859:LEU:HD21	3:D:867:TYR:HB3	1.92	0.51
1:A:743:GLU:HB3	2:C:110:LYS:HA	1.93	0.51
3:D:667:CYS:HB3	3:D:697:CYS:HA	1.93	0.50
9:A:2406:Y01:HAN2	9:A:2406:Y01:HAC3	1.92	0.50
3:D:51:ALA:HB3	3:D:814:ILE:HD13	1.94	0.50
1:A:213:LEU:HA	1:A:216:ILE:HG22	1.93	0.50
1:A:1490:MET:HG2	1:A:1499:TYR:OH	2.11	0.50
2:C:294:VAL:O	2:C:322:TYR:OH	2.28	0.50
1:A:1683:PHE:HB2	10:A:2409:CLR:H71	1.94	0.50
2:C:124:LEU:HA	2:C:127:ILE:HG22	1.93	0.50
3:D:254:MET:HA	3:D:357:ILE:HG13	1.93	0.50
1:A:104:THR:HG22	1:A:141:PHE:CE1	2.45	0.50
1:A:252:ALA:O	1:A:283:CYS:HA	2.11	0.50
1:A:328:GLY:O	1:A:332:ASN:ND2	2.44	0.49
2:C:92:PHE:HE2	2:C:178:ARG:HG2	1.77	0.49
1:A:1155:VAL:HA	1:A:1158:VAL:HG12	1.94	0.49
1:A:1255:VAL:O	1:A:1258:PRO:HD2	2.12	0.49
3:D:459:VAL:HG12	3:D:493:SER:HA	1.94	0.49
1:A:1480:MET:HE2	1:A:1480:MET:CA	2.37	0.49
1:A:1743:ARG:HB3	1:A:1788:THR:HA	1.94	0.49
1:A:104:THR:HG22	1:A:141:PHE:HE1	1.78	0.49
1:A:122:ASP:HB2	3:D:262:GLY:HA3	1.95	0.49

Continued on next page...

Continued from previous page...

Atom-1	Atom-2	Interatomic distance (Å)	Clash overlap (Å)
3:D:289:VAL:HG12	3:D:310:ALA:HB2	1.95	0.49
1:A:617:PHE:HB2	9:A:2403:Y01:HAA2	1.95	0.49
1:A:1547:ILE:O	1:A:1550:ILE:HG22	2.13	0.49
9:A:2403:Y01:HAC1	9:A:2403:Y01:HAU2	1.95	0.49
2:C:80:VAL:HB	2:C:117:PHE:CE1	2.48	0.49
1:A:1330:GLU:O	1:A:1331:LYS:HG2	2.12	0.48
9:A:2407:Y01:CAL	10:A:2408:CLR:H193	2.29	0.48
2:C:192:VAL:O	2:C:196:MET:HG3	2.13	0.48
1:A:533:MET:HE2	1:A:541:TYR:CD2	2.49	0.48
1:A:1575:LEU:O	1:A:1578:LEU:HG	2.13	0.48
3:D:744:TYR:HB3	3:D:745:PRO:HD3	1.94	0.48
3:D:902:SER:OG	3:D:974:CYS:O	2.25	0.48
1:A:104:THR:CG2	1:A:141:PHE:HE1	2.24	0.48
3:D:726:ILE:HB	3:D:729:VAL:HB	1.96	0.48
3:D:990:PHE:O	3:D:1004:HIS:ND1	2.47	0.48
1:A:256:ASN:OD1	7:A:2401:NAG:H2	2.14	0.48
2:C:357:TRP:O	2:C:361:HIS:ND1	2.37	0.48
12:A:2412:PT5:H27	12:A:2412:PT5:H31	1.66	0.47
3:D:882:LEU:O	3:D:886:LEU:HG	2.14	0.47
1:A:721:ASP:HA	1:A:724:GLU:HG2	1.96	0.47
1:A:1403:PHE:HB2	1:A:1404:PRO:HD2	1.95	0.47
3:D:698:ASN:HD21	3:D:701:LEU:HD12	1.79	0.47
3:D:876:GLY:HA3	3:D:1031:LEU:HB2	1.97	0.47
3:D:732:ARG:HG2	3:D:814:ILE:HG22	1.96	0.47
9:A:2407:Y01:HAE1	9:A:2407:Y01:HAS2	1.51	0.47
1:A:317:THR:HG21	1:A:1650:ARG:HG3	1.97	0.47
1:A:1328:ASP:O	1:A:1334:VAL:HA	2.15	0.47
3:D:640:THR:HA	3:D:643:ARG:HG2	1.97	0.47
1:A:1488:LEU:HD11	1:A:1571:ARG:CD	2.43	0.47
1:A:1656:ALA:HB1	1:A:1659:GLU:HB2	1.96	0.47
10:A:2408:CLR:H213	10:A:2408:CLR:H231	1.66	0.47
1:A:733:LEU:O	1:A:737:LYS:HG2	2.14	0.47
1:A:1480:MET:CE	1:A:1480:MET:CA	2.92	0.47
1:A:1733:TRP:CH2	1:A:1791:PHE:HB3	2.50	0.47
3:D:443:GLN:HE22	3:D:1058:VAL:HG21	1.79	0.47
3:D:569:ASP:O	3:D:573:GLU:HG3	2.15	0.47
1:A:1576:ILE:HD12	1:A:1576:ILE:H	1.79	0.46
2:C:60:VAL:HA	2:C:96:LYS:HG2	1.97	0.46
1:A:272:ALA:HB1	1:A:273:PRO:HD2	1.96	0.46
1:A:1470:SER:HB3	1:A:1472:PRO:HD2	1.97	0.46
3:D:252:LYS:HE2	3:D:426:TYR:HE2	1.80	0.46

Continued on next page...

Continued from previous page...

Atom-1	Atom-2	Interatomic distance (Å)	Clash overlap (Å)
3:D:296:SER:C	3:D:297:ASN:HD22	2.16	0.46
3:D:510:GLY:HA2	3:D:622:VAL:O	2.15	0.46
1:A:1821:LEU:O	1:A:1825:ILE:HG12	2.15	0.46
3:D:1018:VAL:HG22	3:D:1019:GLU:H	1.80	0.46
2:C:108:LEU:HB3	2:C:110:LYS:HG2	1.97	0.46
3:D:595:GLN:HB3	3:D:762:SER:HB2	1.97	0.46
3:D:664:ARG:NH2	3:D:737:ASP:O	2.36	0.46
3:D:1027:ASP:OD1	3:D:1027:ASP:N	2.48	0.46
9:A:2406:Y01:HAS2	9:A:2406:Y01:HAE1	1.55	0.46
3:D:92:ASN:OD1	7:D:2001:NAG:N2	2.49	0.46
1:A:497:LEU:CD1	9:A:2406:Y01:HAC3	2.45	0.46
1:A:1415:ILE:HG22	1:A:1704:VAL:HG11	1.97	0.46
3:D:1030:LEU:H	3:D:1030:LEU:HD23	1.81	0.46
3:D:855:ASP:H	3:D:1012:ASN:HD22	1.64	0.46
1:A:1473:PHE:O	1:A:1477:ILE:HG12	2.16	0.45
1:A:1664:CYS:HA	1:A:1668:GLN:HG3	1.97	0.45
1:A:472:ARG:HG3	1:A:534:TYR:CZ	2.51	0.45
1:A:1700:LEU:O	1:A:1704:VAL:HG23	2.16	0.45
2:C:85:VAL:HG23	2:C:108:LEU:HD11	1.99	0.45
3:D:786:GLY:HA2	3:D:790:SER:HB2	1.98	0.45
1:A:582:LEU:O	1:A:585:ILE:HG12	2.16	0.45
1:A:1716:ARG:NH2	1:A:1724:HIS:HB2	2.20	0.45
3:D:1035:GLU:OE2	3:D:1035:GLU:HA	2.16	0.45
1:A:1642:LEU:HD12	11:A:2410:3PE:H322	1.99	0.45
9:A:2406:Y01:HAN2	9:A:2406:Y01:HAC2	1.98	0.45
1:A:89:LYS:HB3	1:A:151:ALA:HB1	1.98	0.45
1:A:605:SER:O	1:A:609:ILE:HG12	2.17	0.45
1:A:1570:PHE:O	1:A:1573:ALA:HB3	2.17	0.45
3:D:114:ARG:NH2	3:D:120:ASN:HB2	2.32	0.45
1:A:1441:ASP:HA	1:A:1444:ILE:HD12	1.98	0.45
3:D:100:LEU:HB3	3:D:488:MET:SD	2.57	0.45
1:A:192:ARG:O	1:A:195:ARG:HG2	2.17	0.44
1:A:404:ASP:HB2	1:A:466:ARG:NH1	2.32	0.44
1:A:546:PHE:CD2	1:A:584:ARG:NH2	2.85	0.44
1:A:1488:LEU:HD11	1:A:1571:ARG:HG2	1.98	0.44
1:A:1530:TYR:CZ	1:A:1536:ASN:HB3	2.52	0.44
3:D:511:TYR:OH	3:D:565:GLU:OE1	2.35	0.44
1:A:269:GLY:HA3	1:A:274:ALA:HB3	1.99	0.44
1:A:732:LYS:HE2	1:A:732:LYS:HB2	1.78	0.44
9:A:2407:Y01:HAD3	9:A:2407:Y01:HBD	1.65	0.44
1:A:1508:ILE:CG1	1:A:1550:ILE:HD11	2.45	0.44

Continued on next page...

Continued from previous page...

Atom-1	Atom-2	Interatomic distance (Å)	Clash overlap (Å)
1:A:533:MET:HG3	1:A:533:MET:O	2.16	0.44
1:A:1488:LEU:HD21	1:A:1572:ALA:HA	1.99	0.44
1:A:1492:PHE:CD2	10:A:2405:CLR:H21	2.52	0.44
9:A:2403:Y01:CAC	9:A:2403:Y01:CAU	2.93	0.44
2:C:180:VAL:HB	2:C:268:VAL:HG12	1.99	0.44
2:C:136:ARG:O	2:C:137:ARG:NH1	2.43	0.44
2:C:201:PHE:CZ	2:C:270:ASP:OD1	2.70	0.44
1:A:532:LYS:HB2	1:A:532:LYS:HE2	1.39	0.44
9:A:2406:Y01:HAD3	9:A:2406:Y01:HBD	1.60	0.44
2:C:181:VAL:HG22	2:C:269:LEU:HB2	2.00	0.44
2:C:212:ILE:HG12	2:C:266:LEU:HB3	2.00	0.44
1:A:1367:TRP:CG	1:A:1368:PRO:HD3	2.53	0.43
1:A:1776:VAL:HG12	1:A:1777:ARG:N	2.33	0.43
1:A:1820:GLU:HA	1:A:1823:LYS:HG2	2.00	0.43
1:A:1828:VAL:HG12	1:A:1828:VAL:O	2.17	0.43
9:A:2407:Y01:HAQ2	9:A:2407:Y01:HAK1	1.73	0.43
3:D:723:GLN:N	3:D:723:GLN:OE1	2.51	0.43
1:A:1159:VAL:HG11	1:A:1193:VAL:HG11	2.00	0.43
1:A:155:VAL:HG13	1:A:163:ARG:HH21	1.83	0.43
1:A:532:LYS:O	1:A:532:LYS:HG3	2.15	0.43
1:A:771:ARG:HA	1:A:771:ARG:HD2	1.87	0.43
1:A:1471:PRO:N	1:A:1472:PRO:HD2	2.34	0.43
9:A:2403:Y01:HAP1	9:A:2403:Y01:HAJ2	2.00	0.43
3:D:363:ASP:OD1	3:D:364:GLY:N	2.51	0.43
1:A:400:LEU:O	1:A:400:LEU:HG	2.17	0.43
2:C:203:PHE:CG	2:C:346:CYS:SG	3.06	0.43
2:C:249:GLU:O	2:C:253:GLU:HG2	2.18	0.43
1:A:337:ILE:HB	1:A:338:PRO:HD3	2.00	0.43
1:A:492:VAL:HG22	1:A:525:PHE:CZ	2.54	0.43
1:A:494:LEU:HD23	1:A:494:LEU:HA	1.89	0.43
1:A:765:ARG:HD2	1:A:765:ARG:HA	1.80	0.43
3:D:182:GLU:O	3:D:186:THR:OG1	2.26	0.43
1:A:1650:ARG:HH11	1:A:1660:ILE:HD11	1.83	0.43
9:A:2403:Y01:HAD1	9:A:2403:Y01:HAV1	1.76	0.43
2:C:130:LYS:O	2:C:133:GLN:HG3	2.18	0.43
3:D:296:SER:O	3:D:297:ASN:ND2	2.35	0.43
3:D:1039:ASP:N	3:D:1039:ASP:OD1	2.51	0.43
1:A:94:TRP:HB2	1:A:96:PRO:HD2	2.00	0.42
1:A:1535:TRP:CE2	1:A:1580:ARG:HD3	2.54	0.42
9:A:2406:Y01:HAV1	9:A:2406:Y01:HAD1	1.63	0.42
10:A:2409:CLR:H221	10:A:2409:CLR:H162	1.38	0.42

Continued on next page...

Continued from previous page...

Atom-1	Atom-2	Interatomic distance (Å)	Clash overlap (Å)
2:C:61:ALA:H	2:C:96:LYS:HA	1.85	0.42
3:D:683:PHE:O	3:D:687:ILE:HG12	2.19	0.42
1:A:95:PRO:CB	1:A:96:PRO:CD	2.91	0.42
1:A:1750:PHE:HB3	1:A:1754:LYS:NZ	2.34	0.42
2:C:65:ARG:HB3	2:C:172:ASP:HB2	2.01	0.42
3:D:70:VAL:HG11	3:D:805:LYS:HD3	2.02	0.42
3:D:205:TRP:NE1	3:D:456:LEU:HD22	2.34	0.42
3:D:850:CYS:HB2	3:D:1017:MET:HG3	2.00	0.42
3:D:147:PRO:HG2	3:D:149:PHE:CZ	2.54	0.42
1:A:1650:ARG:NH1	1:A:1660:ILE:HD11	2.35	0.42
9:A:2403:Y01:HAE1	9:A:2403:Y01:HAS2	1.59	0.42
3:D:128:LYS:HB3	3:D:223:TRP:HB3	2.01	0.42
1:A:657:PHE:O	1:A:661:THR:HG23	2.19	0.42
3:D:295:ASN:C	3:D:297:ASN:H	2.21	0.42
2:C:109:VAL:O	2:C:359:ALA:HB1	2.19	0.42
3:D:44:LEU:HD21	3:D:821:TRP:CE2	2.55	0.42
3:D:682:ASN:O	3:D:685:GLU:HG3	2.20	0.42
1:A:230:LEU:HD13	1:A:347:MET:HG3	2.01	0.42
1:A:1426:VAL:HG22	1:A:1428:SER:H	1.85	0.42
9:A:2406:Y01:HAO1	9:A:2406:Y01:HAP1	1.96	0.42
2:C:77:GLU:HB2	2:C:103:TRP:HZ2	1.84	0.42
2:C:234:LYS:HG3	2:C:235:ARG:HG2	2.01	0.42
2:C:200:LEU:HD23	2:C:200:LEU:HA	1.93	0.42
3:D:515:ILE:HG22	3:D:521:VAL:HG12	2.01	0.42
1:A:467:LYS:HD3	1:A:467:LYS:HA	1.94	0.41
2:C:98:LYS:HD3	2:C:104:TRP:HZ3	1.85	0.41
3:D:615:THR:HG23	3:D:617:TYR:H	1.85	0.41
3:D:720:TRP:CE3	3:D:744:TYR:HB2	2.55	0.41
1:A:153:GLY:O	1:A:161:TYR:HB3	2.19	0.41
1:A:546:PHE:CE2	1:A:584:ARG:CZ	3.03	0.41
1:A:1218:LEU:HD23	1:A:1218:LEU:HA	1.90	0.41
2:C:104:TRP:HB2	2:C:118:ILE:HG23	2.03	0.41
3:D:729:VAL:HG22	3:D:814:ILE:HD12	2.01	0.41
1:A:311:ILE:O	1:A:344:SER:OG	2.34	0.41
1:A:388:TYR:CE2	2:C:294:VAL:HG13	2.55	0.41
1:A:1718:SER:HB2	1:A:1721:LEU:HD23	2.01	0.41
12:A:2412:PT5:O6	12:A:2412:PT5:P5	2.79	0.41
1:A:476:ARG:HG3	1:A:536:LEU:HD23	2.02	0.41
1:A:504:TYR:OH	1:A:1381:GLU:OE2	2.27	0.41
1:A:1488:LEU:HD11	1:A:1571:ARG:CG	2.50	0.41
1:A:1725:HIS:ND1	1:A:1760:LEU:HB3	2.36	0.41

Continued on next page...

Continued from previous page...

Atom-1	Atom-2	Interatomic distance (Å)	Clash overlap (Å)
1:A:1822:ARG:HD2	1:A:1822:ARG:HA	1.86	0.41
3:D:174:GLU:HA	3:D:179:VAL:HG11	2.02	0.41
3:D:204:LEU:HD11	3:D:493:SER:HB2	2.03	0.41
1:A:543:ARG:HA	1:A:543:ARG:HD3	1.88	0.41
1:A:1142:PHE:CD1	1:A:1142:PHE:N	2.88	0.41
1:A:1464:THR:HB	1:A:1524:ALA:HB2	2.03	0.41
10:A:2405:CLR:H232	10:A:2405:CLR:H263	1.90	0.41
3:D:93:ARG:HB3	3:D:490:VAL:HG11	2.01	0.41
6:F:3:NAG:H4	6:F:4:NAG:H2	1.87	0.41
1:A:1440:ILE:O	1:A:1444:ILE:HG13	2.21	0.41
1:A:1827:VAL:O	1:A:1827:VAL:HG13	2.20	0.41
2:C:65:ARG:HD3	2:C:92:PHE:CE1	2.55	0.41
3:D:731:ALA:HB3	3:D:815:LYS:HD2	2.03	0.41
3:D:1018:VAL:HG22	3:D:1019:GLU:N	2.36	0.41
1:A:570:SER:OG	1:A:571:SER:N	2.53	0.41
1:A:145:ALA:O	1:A:149:ILE:HG13	2.21	0.41
1:A:475:ILE:O	1:A:479:VAL:HG13	2.20	0.41
1:A:607:LYS:HE3	1:A:607:LYS:HB2	1.80	0.41
1:A:699:THR:O	1:A:703:VAL:HG23	2.21	0.41
1:A:1403:PHE:HB2	1:A:1404:PRO:HD3	2.02	0.41
1:A:1645:LEU:HB3	11:A:2410:3PE:H371	2.03	0.41
9:A:2407:Y01:HAD1	9:A:2407:Y01:HAV1	1.56	0.41
10:A:2409:CLR:H273	10:A:2409:CLR:H161	2.03	0.41
2:C:320:MET:SD	2:C:320:MET:N	2.94	0.41
3:D:27:PHE:HA	3:D:28:PRO:HD3	1.96	0.41
3:D:29:SER:OG	3:D:30:ALA:N	2.54	0.41
1:A:479:VAL:HG11	1:A:532:LYS:HA	2.02	0.41
1:A:583:LEU:HD13	12:A:2412:PT5:H26	2.03	0.41
3:D:609:TRP:HB3	3:D:620:ALA:HB2	2.03	0.41
3:D:798:VAL:HG22	3:D:810:ALA:O	2.22	0.41
3:D:883:MET:HG3	3:D:1031:LEU:HD12	2.03	0.41
1:A:216:ILE:HD11	1:A:703:VAL:HG22	2.03	0.40
3:D:83:ALA:HB1	3:D:612:VAL:HG22	2.02	0.40
1:A:472:ARG:HG3	1:A:534:TYR:CE2	2.56	0.40
1:A:1400:PHE:HA	1:A:1404:PRO:HG2	2.02	0.40
2:C:266:LEU:HD12	2:C:266:LEU:HA	1.93	0.40
2:C:294:VAL:HG21	2:C:300:LEU:HD13	2.04	0.40
3:D:978:GLN:HG2	3:D:1035:GLU:OE2	2.22	0.40
3:D:1002:ILE:HG22	3:D:1019:GLU:OE2	2.21	0.40
5:G:1:NAG:H61	5:G:2:NAG:N2	2.37	0.40
1:A:1169:ALA:O	1:A:1183:LEU:HD11	2.21	0.40

Continued on next page...

Continued from previous page...

Atom-1	Atom-2	Interatomic distance (Å)	Clash overlap (Å)
3:D:777:ALA:HA	3:D:778:PRO:HD3	1.93	0.40
1:A:1304:PHE:CE1	1:A:1392:LEU:HD13	2.57	0.40
1:A:1725:HIS:CE1	1:A:1760:LEU:HB3	2.57	0.40
3:D:182:GLU:HA	3:D:185:TRP:CD1	2.56	0.40
3:D:532:ILE:HG22	3:D:901:GLN:HG3	2.03	0.40
3:D:623:LEU:HD12	3:D:623:LEU:HA	1.96	0.40
9:A:2406:Y01:HAS1	9:A:2406:Y01:HAT2	1.94	0.40
3:D:147:PRO:HB3	3:D:163:HIS:NE2	2.37	0.40
3:D:994:LEU:HB3	3:D:1001:ARG:HB2	2.04	0.40

There are no symmetry-related clashes.

5.3 Torsion angles [i](#)

5.3.1 Protein backbone [i](#)

In the following table, the Percentiles column shows the percent Ramachandran outliers of the chain as a percentile score with respect to all PDB entries followed by that with respect to all EM entries.

The Analysed column shows the number of residues for which the backbone conformation was analysed, and the total number of residues.

Mol	Chain	Analysed	Favoured	Allowed	Outliers	Percentiles	
1	A	1317/2339 (56%)	1252 (95%)	61 (5%)	4 (0%)	41	73
2	C	322/484 (66%)	305 (95%)	17 (5%)	0	100	100
3	D	936/1103 (85%)	889 (95%)	47 (5%)	0	100	100
All	All	2575/3926 (66%)	2446 (95%)	125 (5%)	4 (0%)	50	79

All (4) Ramachandran outliers are listed below:

Mol	Chain	Res	Type
1	A	1334	VAL
1	A	1403	PHE
1	A	272	ALA
1	A	290	PRO

5.3.2 Protein sidechains [i](#)

In the following table, the Percentiles column shows the percent sidechain outliers of the chain as a percentile score with respect to all PDB entries followed by that with respect to all EM entries.

The Analysed column shows the number of residues for which the sidechain conformation was analysed, and the total number of residues.

Mol	Chain	Analysed	Rotameric	Outliers	Percentiles	
1	A	1165/1991 (58%)	1135 (97%)	30 (3%)	46	74
2	C	287/426 (67%)	287 (100%)	0	100	100
3	D	837/971 (86%)	830 (99%)	7 (1%)	81	92
All	All	2289/3388 (68%)	2252 (98%)	37 (2%)	64	84

All (37) residues with a non-rotameric sidechain are listed below:

Mol	Chain	Res	Type
1	A	89	LYS
1	A	90	ARG
1	A	91	ILE
1	A	94	TRP
1	A	101	ILE
1	A	104	THR
1	A	108	ASN
1	A	394	LYS
1	A	396	GLU
1	A	398	VAL
1	A	400	LEU
1	A	402	GLU
1	A	403	GLU
1	A	404	ASP
1	A	495	ASN
1	A	527	THR
1	A	531	LEU
1	A	532	LYS
1	A	533	MET
1	A	584	ARG
1	A	587	LYS
1	A	1140	ARG
1	A	1143	CYS
1	A	1144	HIS
1	A	1147	VAL
1	A	1407	PHE

Continued on next page...

Continued from previous page...

Mol	Chain	Res	Type
1	A	1481	ILE
1	A	1483	LEU
1	A	1487	VAL
1	A	1800	ARG
3	D	106	LYS
3	D	263	SER
3	D	265	SER
3	D	297	ASN
3	D	476	LYS
3	D	526	ASN
3	D	634	LYS

Sometimes sidechains can be flipped to improve hydrogen bonding and reduce clashes. All (5) such sidechains are listed below:

Mol	Chain	Res	Type
1	A	117	HIS
1	A	634	GLN
1	A	676	GLN
1	A	1302	GLN
1	A	1484	ASN

5.3.3 RNA [i](#)

There are no RNA molecules in this entry.

5.4 Non-standard residues in protein, DNA, RNA chains [i](#)

There are no non-standard protein/DNA/RNA residues in this entry.

5.5 Carbohydrates [i](#)

13 monosaccharides are modelled in this entry.

In the following table, the Counts columns list the number of bonds (or angles) for which Mogul statistics could be retrieved, the number of bonds (or angles) that are observed in the model and the number of bonds (or angles) that are defined in the Chemical Component Dictionary. The Link column lists molecule types, if any, to which the group is linked. The Z score for a bond length (or angle) is the number of standard deviations the observed value is removed from the expected value. A bond length (or angle) with $|Z| > 2$ is considered an outlier worth inspection. RMSZ is the root-mean-square of all Z scores of the bond lengths (or angles).

Mol	Type	Chain	Res	Link	Bond lengths			Bond angles		
					Counts	RMSZ	# Z > 2	Counts	RMSZ	# Z > 2
4	NAG	B	1	4,3	14,14,15	0.38	0	17,19,21	0.37	0
4	NAG	B	2	4	14,14,15	0.42	0	17,19,21	1.27	1 (5%)
4	NAG	B	3	4	14,14,15	0.39	0	17,19,21	0.40	0
5	NAG	E	1	5,3	14,14,15	0.52	0	17,19,21	0.62	0
5	NAG	E	2	5	14,14,15	0.43	0	17,19,21	0.40	0
6	NAG	F	1	6,3	14,14,15	0.27	0	17,19,21	0.42	0
6	NAG	F	2	6	14,14,15	0.18	0	17,19,21	0.44	0
6	NAG	F	3	6	14,14,15	0.97	1 (7%)	17,19,21	1.66	2 (11%)
6	NAG	F	4	6	14,14,15	0.50	0	17,19,21	1.25	1 (5%)
5	NAG	G	1	5,3	14,14,15	1.16	1 (7%)	17,19,21	1.28	3 (17%)
5	NAG	G	2	5	14,14,15	0.49	0	17,19,21	0.60	0
5	NAG	H	1	5,3	14,14,15	0.41	0	17,19,21	0.44	0
5	NAG	H	2	5	14,14,15	0.22	0	17,19,21	0.40	0

In the following table, the Chirals column lists the number of chiral outliers, the number of chiral centers analysed, the number of these observed in the model and the number defined in the Chemical Component Dictionary. Similar counts are reported in the Torsion and Rings columns. '-' means no outliers of that kind were identified.

Mol	Type	Chain	Res	Link	Chirals	Torsions	Rings
4	NAG	B	1	4,3	-	2/6/23/26	0/1/1/1
4	NAG	B	2	4	-	3/6/23/26	0/1/1/1
4	NAG	B	3	4	-	1/6/23/26	0/1/1/1
5	NAG	E	1	5,3	-	3/6/23/26	0/1/1/1
5	NAG	E	2	5	-	3/6/23/26	0/1/1/1
6	NAG	F	1	6,3	-	2/6/23/26	0/1/1/1
6	NAG	F	2	6	-	0/6/23/26	0/1/1/1
6	NAG	F	3	6	-	5/6/23/26	0/1/1/1
6	NAG	F	4	6	-	5/6/23/26	0/1/1/1
5	NAG	G	1	5,3	-	3/6/23/26	0/1/1/1
5	NAG	G	2	5	-	2/6/23/26	0/1/1/1
5	NAG	H	1	5,3	-	2/6/23/26	0/1/1/1
5	NAG	H	2	5	-	2/6/23/26	0/1/1/1

All (2) bond length outliers are listed below:

Mol	Chain	Res	Type	Atoms	Z	Observed(Å)	Ideal(Å)
5	G	1	NAG	O5-C1	-4.03	1.37	1.43
6	F	3	NAG	O5-C1	3.24	1.48	1.43

All (7) bond angle outliers are listed below:

Mol	Chain	Res	Type	Atoms	Z	Observed(°)	Ideal(°)
6	F	3	NAG	C1-O5-C5	4.55	118.35	112.19
6	F	3	NAG	C2-N2-C7	4.33	129.07	122.90
4	B	2	NAG	C2-N2-C7	4.31	129.04	122.90
6	F	4	NAG	C2-N2-C7	4.28	129.00	122.90
5	G	1	NAG	C3-C4-C5	3.06	115.69	110.24
5	G	1	NAG	C1-O5-C5	-2.52	108.77	112.19
5	G	1	NAG	O4-C4-C5	-2.35	103.46	109.30

There are no chirality outliers.

All (33) torsion outliers are listed below:

Mol	Chain	Res	Type	Atoms
5	E	1	NAG	O5-C5-C6-O6
5	G	1	NAG	O5-C5-C6-O6
5	E	1	NAG	C4-C5-C6-O6
5	G	2	NAG	O5-C5-C6-O6
6	F	1	NAG	O5-C5-C6-O6
4	B	1	NAG	O5-C5-C6-O6
6	F	3	NAG	C4-C5-C6-O6
4	B	1	NAG	C4-C5-C6-O6
5	G	2	NAG	C4-C5-C6-O6
6	F	4	NAG	O5-C5-C6-O6
5	G	1	NAG	C4-C5-C6-O6
4	B	2	NAG	C8-C7-N2-C2
4	B	2	NAG	O7-C7-N2-C2
5	E	2	NAG	C8-C7-N2-C2
5	E	2	NAG	O7-C7-N2-C2
5	H	1	NAG	C8-C7-N2-C2
5	H	1	NAG	O7-C7-N2-C2
5	H	2	NAG	C8-C7-N2-C2
5	H	2	NAG	O7-C7-N2-C2
6	F	3	NAG	C8-C7-N2-C2
6	F	3	NAG	O7-C7-N2-C2
6	F	4	NAG	C8-C7-N2-C2
6	F	4	NAG	O7-C7-N2-C2
6	F	1	NAG	C4-C5-C6-O6
6	F	3	NAG	O5-C5-C6-O6
6	F	4	NAG	C4-C5-C6-O6
4	B	3	NAG	O5-C5-C6-O6
5	E	2	NAG	O5-C5-C6-O6
4	B	2	NAG	C3-C2-N2-C7

Continued on next page...

Continued from previous page...

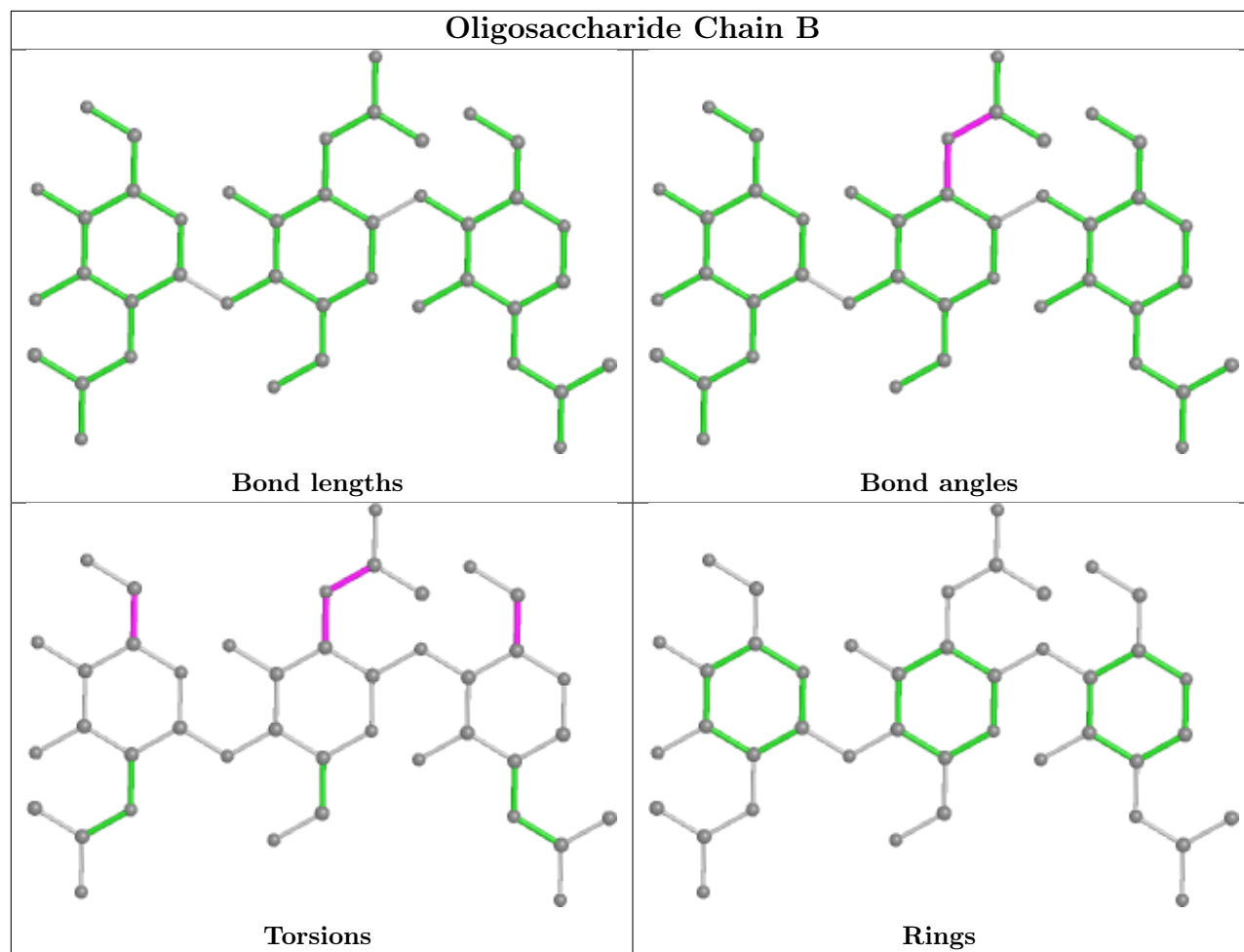
Mol	Chain	Res	Type	Atoms
5	E	1	NAG	C3-C2-N2-C7
6	F	3	NAG	C3-C2-N2-C7
6	F	4	NAG	C3-C2-N2-C7
5	G	1	NAG	C1-C2-N2-C7

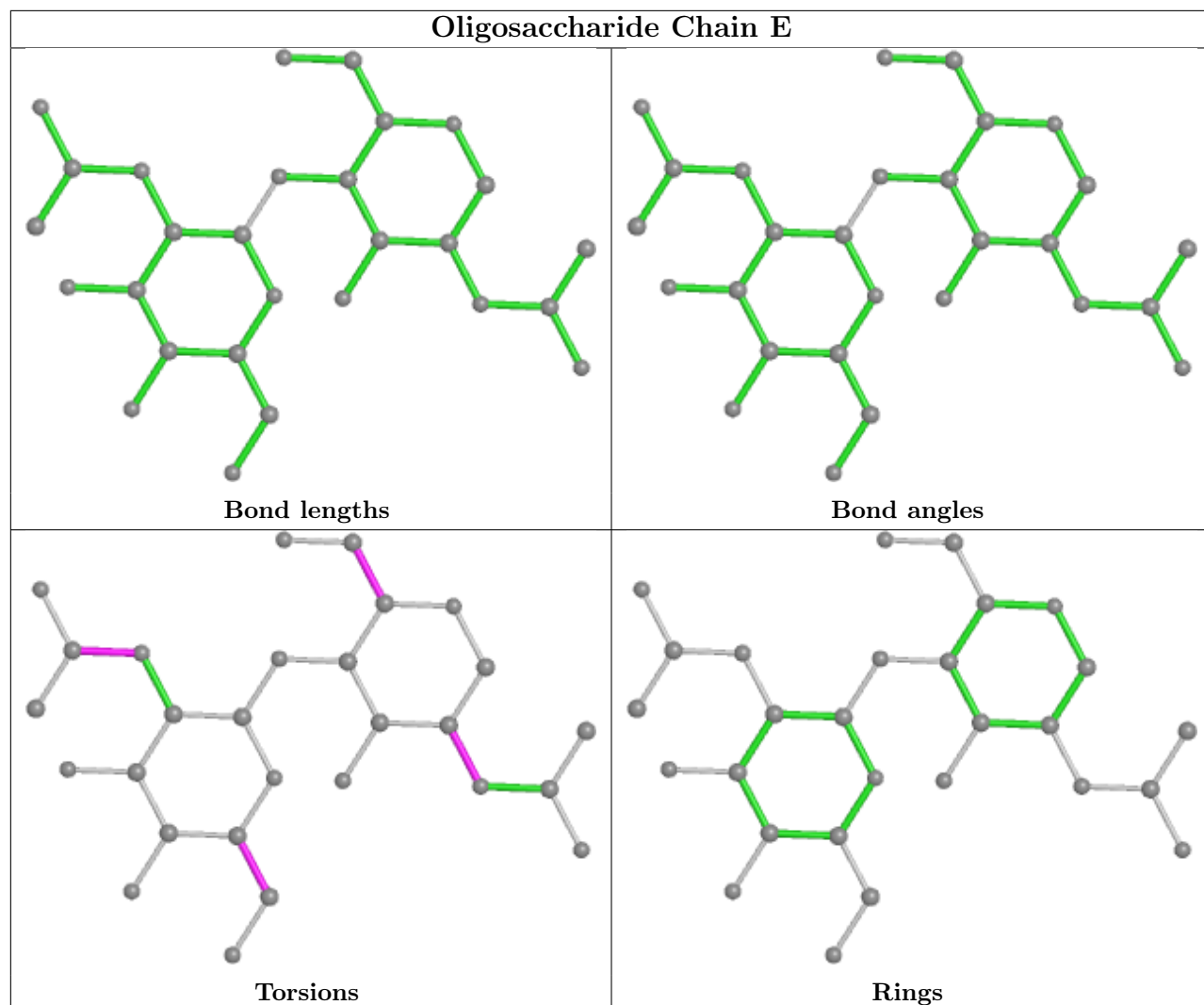
There are no ring outliers.

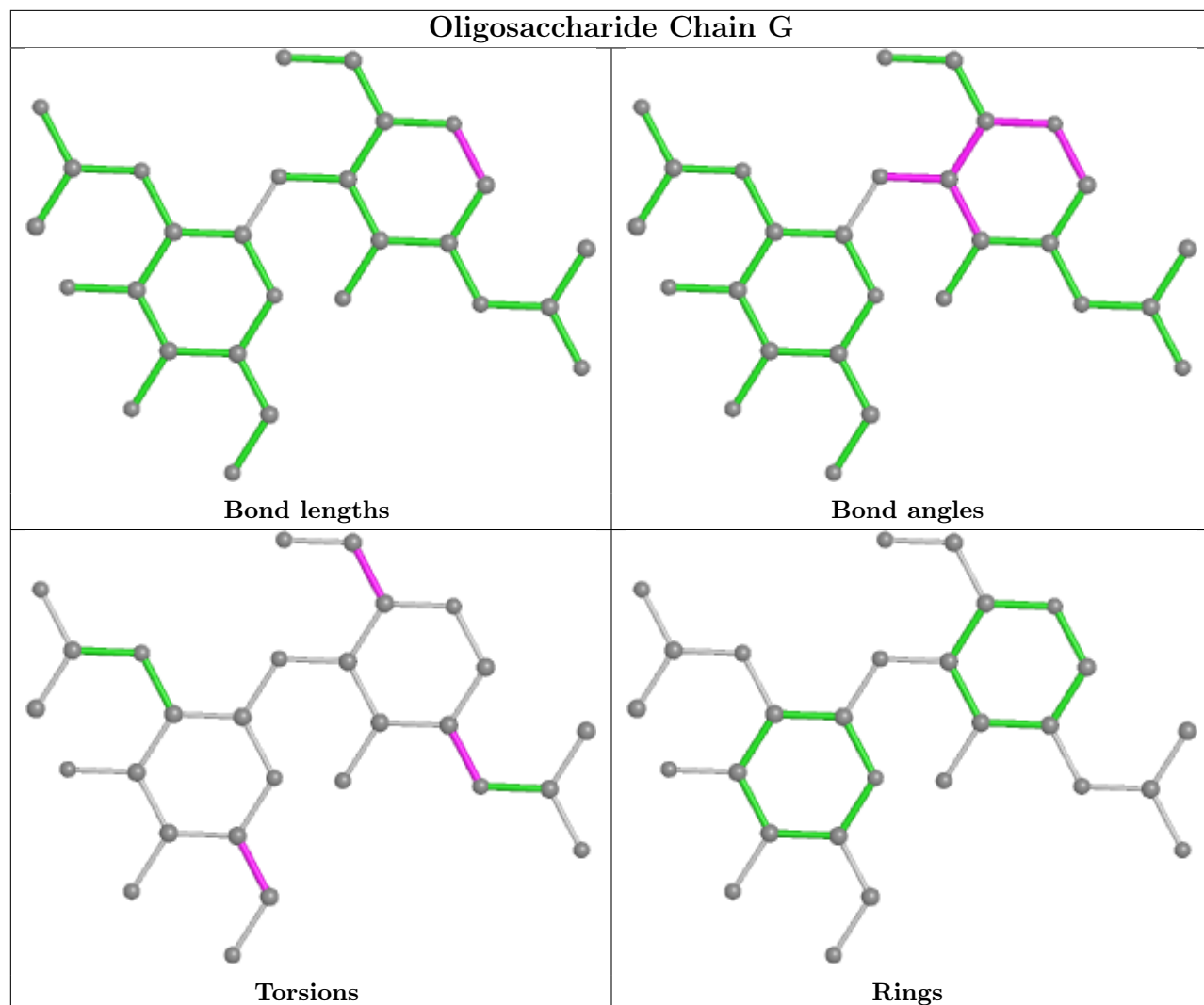
6 monomers are involved in 7 short contacts:

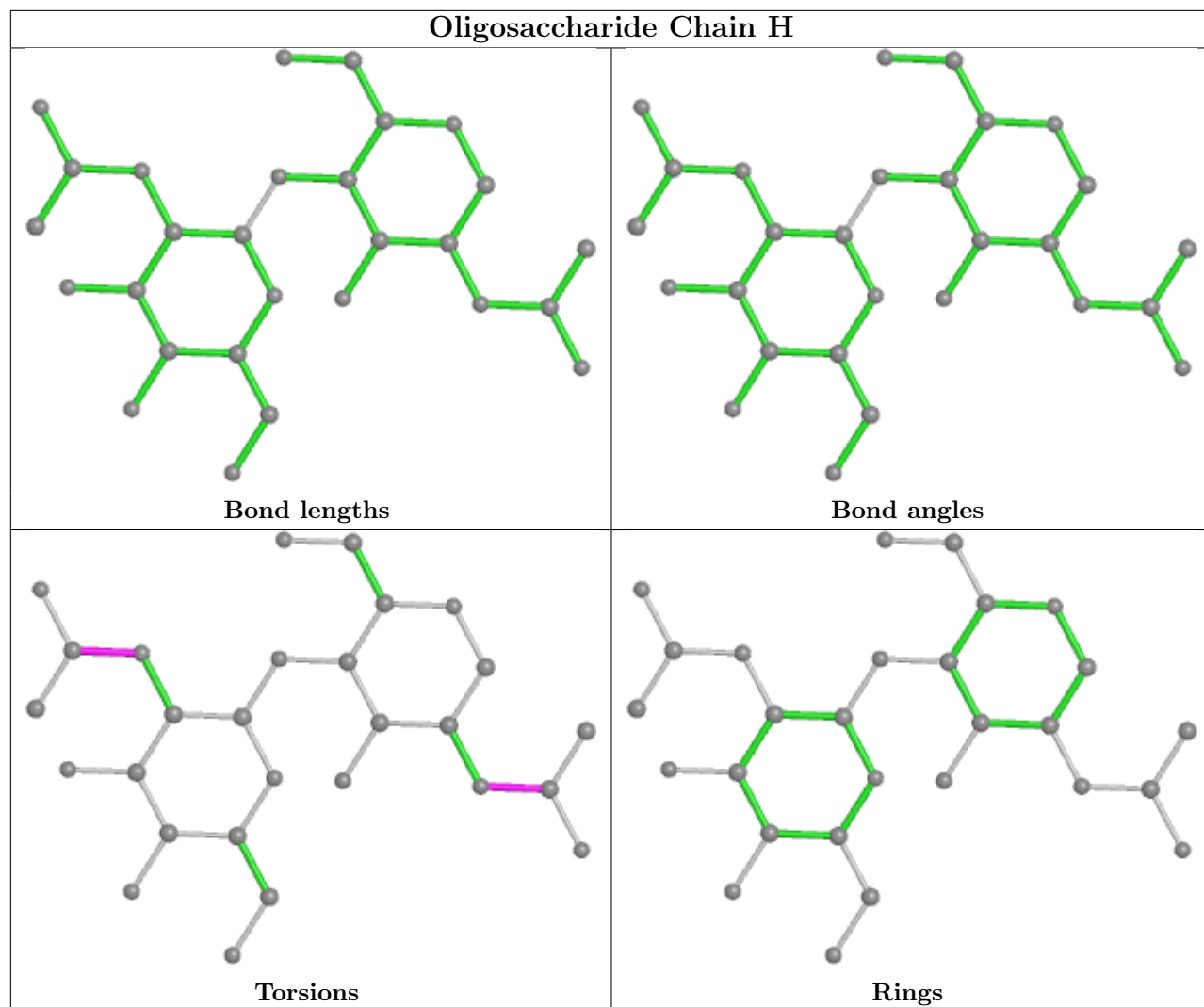
Mol	Chain	Res	Type	Clashes	Symm-Clashes
6	F	1	NAG	1	0
6	F	3	NAG	3	0
6	F	4	NAG	2	0
4	B	2	NAG	1	0
5	G	2	NAG	1	0
5	G	1	NAG	1	0

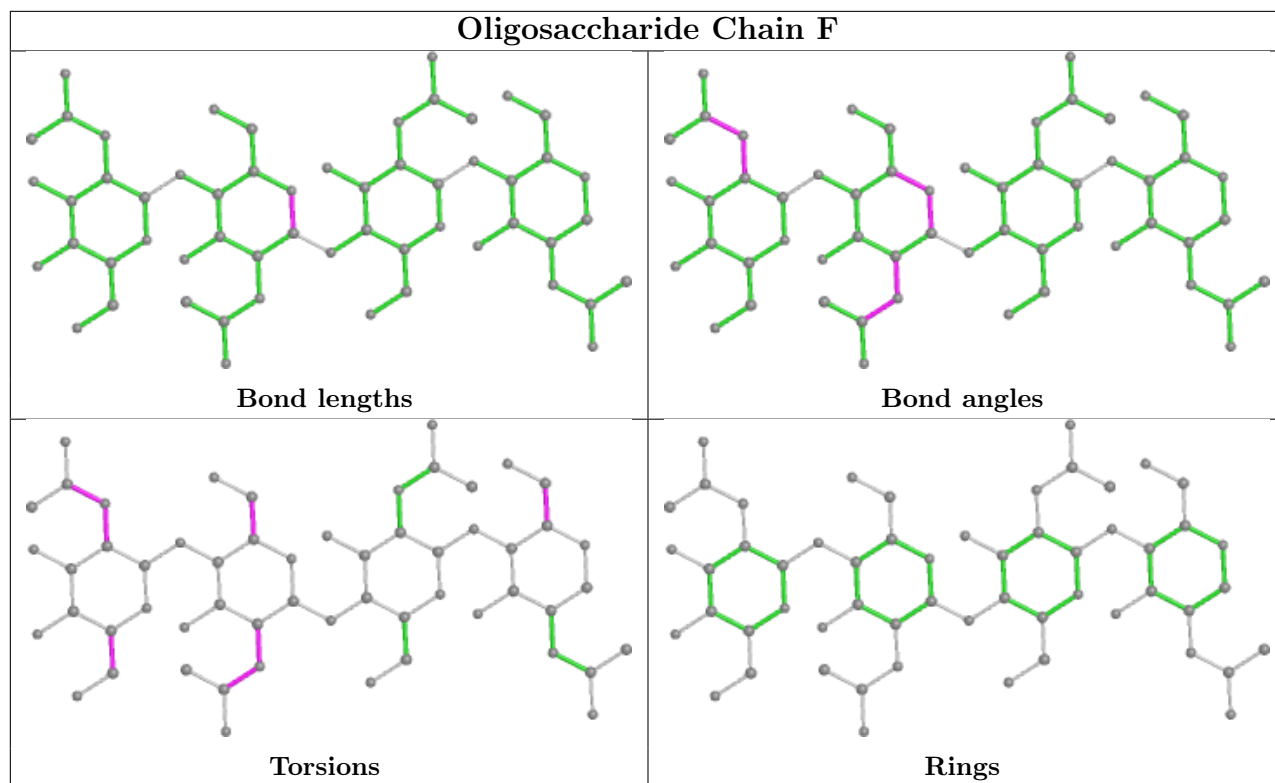
The following is a two-dimensional graphical depiction of Mogul quality analysis of bond lengths, bond angles, torsion angles, and ring geometry for oligosaccharide.











5.6 Ligand geometry [i](#)

Of 15 ligands modelled in this entry, 2 are monoatomic - leaving 13 for Mogul analysis.

In the following table, the Counts columns list the number of bonds (or angles) for which Mogul statistics could be retrieved, the number of bonds (or angles) that are observed in the model and the number of bonds (or angles) that are defined in the Chemical Component Dictionary. The Link column lists molecule types, if any, to which the group is linked. The Z score for a bond length (or angle) is the number of standard deviations the observed value is removed from the expected value. A bond length (or angle) with $|Z| > 2$ is considered an outlier worth inspection. RMSZ is the root-mean-square of all Z scores of the bond lengths (or angles).

Mol	Type	Chain	Res	Link	Bond lengths			Bond angles		
					Counts	RMSZ	# Z > 2	Counts	RMSZ	# Z > 2
10	CLR	A	2405	-	31,31,31	1.05	1 (3%)	48,48,48	1.33	7 (14%)
7	NAG	D	2001	3	14,14,15	0.46	0	17,19,21	0.53	0
7	NAG	D	2002	3	14,14,15	0.98	1 (7%)	17,19,21	1.68	2 (11%)
9	Y01	A	2407	-	38,38,38	2.31	11 (28%)	57,57,57	4.53	31 (54%)
11	3PE	A	2410	-	39,39,50	0.57	0	42,44,55	0.59	1 (2%)
10	CLR	A	2408	-	31,31,31	1.05	1 (3%)	48,48,48	1.37	8 (16%)
11	3PE	A	2411	-	50,50,50	0.50	0	53,55,55	0.61	2 (3%)
10	CLR	A	2409	-	31,31,31	1.09	3 (9%)	48,48,48	1.25	5 (10%)
10	CLR	A	2404	-	31,31,31	1.06	2 (6%)	48,48,48	1.33	7 (14%)

Mol	Type	Chain	Res	Link	Bond lengths			Bond angles		
					Counts	RMSZ	# Z > 2	Counts	RMSZ	# Z > 2
7	NAG	A	2401	1	14,14,15	0.44	0	17,19,21	0.36	0
9	Y01	A	2403	-	38,38,38	2.33	11 (28%)	57,57,57	4.42	31 (54%)
12	PT5	A	2412	-	64,64,69	0.86	2 (3%)	78,82,87	1.01	2 (2%)
9	Y01	A	2406	-	38,38,38	2.37	9 (23%)	57,57,57	4.49	31 (54%)

In the following table, the Chirals column lists the number of chiral outliers, the number of chiral centers analysed, the number of these observed in the model and the number defined in the Chemical Component Dictionary. Similar counts are reported in the Torsion and Rings columns. '-' means no outliers of that kind were identified.

Mol	Type	Chain	Res	Link	Chirals	Torsions	Rings
10	CLR	A	2405	-	-	4/10/68/68	0/4/4/4
7	NAG	D	2001	3	-	2/6/23/26	0/1/1/1
7	NAG	D	2002	3	-	5/6/23/26	0/1/1/1
9	Y01	A	2407	-	-	12/19/77/77	0/4/4/4
11	3PE	A	2410	-	-	12/43/43/54	-
10	CLR	A	2408	-	-	5/10/68/68	0/4/4/4
11	3PE	A	2411	-	-	20/54/54/54	-
10	CLR	A	2409	-	-	9/10/68/68	0/4/4/4
10	CLR	A	2404	-	-	5/10/68/68	0/4/4/4
7	NAG	A	2401	1	-	4/6/23/26	0/1/1/1
9	Y01	A	2403	-	-	8/19/77/77	0/4/4/4
12	PT5	A	2412	-	-	27/61/85/90	0/1/1/1
9	Y01	A	2406	-	-	9/19/77/77	0/4/4/4

All (41) bond length outliers are listed below:

Mol	Chain	Res	Type	Atoms	Z	Observed(Å)	Ideal(Å)
9	A	2403	Y01	CAK-CBD	7.21	1.65	1.53
9	A	2406	Y01	CAK-CBD	6.94	1.64	1.53
9	A	2407	Y01	CAK-CBD	6.79	1.64	1.53
9	A	2406	Y01	CBD-CBG	-6.41	1.41	1.53
9	A	2407	Y01	CBD-CBG	-6.22	1.41	1.53
9	A	2403	Y01	CBD-CBG	-6.02	1.42	1.53
9	A	2406	Y01	CAI-CAZ	4.44	1.42	1.33
9	A	2407	Y01	CAI-CAZ	4.40	1.42	1.33
9	A	2403	Y01	CAI-CAZ	4.38	1.42	1.33
12	A	2412	PT5	O18-C11	4.20	1.45	1.33
12	A	2412	PT5	O16-C10	4.15	1.46	1.34

Continued on next page...

Continued from previous page...

Mol	Chain	Res	Type	Atoms	Z	Observed(Å)	Ideal(Å)
9	A	2406	Y01	CAU-CBI	-3.88	1.47	1.54
9	A	2407	Y01	CAU-CBI	-3.79	1.47	1.54
9	A	2403	Y01	CAU-CBI	-3.63	1.47	1.54
9	A	2407	Y01	CAK-CAI	-3.63	1.42	1.50
9	A	2403	Y01	CAK-CAI	-3.59	1.42	1.50
9	A	2403	Y01	CAL-CAX	3.59	1.58	1.50
9	A	2406	Y01	CAK-CAI	-3.55	1.42	1.50
9	A	2407	Y01	CAL-CAX	3.47	1.58	1.50
9	A	2406	Y01	CAL-CAX	3.44	1.58	1.50
7	D	2002	NAG	O5-C1	3.12	1.48	1.43
9	A	2406	Y01	CAV-CBC	3.03	1.59	1.52
9	A	2403	Y01	CAV-CAZ	-2.91	1.45	1.51
9	A	2406	Y01	CBB-CBE	-2.81	1.49	1.54
9	A	2407	Y01	CAV-CBC	2.74	1.58	1.52
9	A	2407	Y01	CAV-CAZ	-2.73	1.45	1.51
9	A	2407	Y01	CBB-CBE	-2.61	1.49	1.54
9	A	2406	Y01	CAV-CAZ	-2.53	1.46	1.51
9	A	2403	Y01	CAV-CBC	2.42	1.57	1.52
9	A	2403	Y01	CBB-CBE	-2.37	1.50	1.54
9	A	2403	Y01	CBH-CBF	-2.35	1.52	1.56
9	A	2403	Y01	CAE-CBI	2.22	1.58	1.54
10	A	2405	CLR	C18-C13	-2.17	1.50	1.54
10	A	2409	CLR	C16-C17	2.13	1.58	1.54
10	A	2404	CLR	C16-C17	2.11	1.58	1.54
10	A	2404	CLR	C18-C13	-2.11	1.50	1.54
9	A	2407	Y01	CBH-CBF	-2.11	1.52	1.56
10	A	2409	CLR	C18-C13	-2.10	1.50	1.54
10	A	2408	CLR	C18-C13	-2.09	1.50	1.54
10	A	2409	CLR	C7-C6	2.06	1.54	1.50
9	A	2407	Y01	OAW-CAY	2.05	1.40	1.34

All (127) bond angle outliers are listed below:

Mol	Chain	Res	Type	Atoms	Z	Observed(°)	Ideal(°)
9	A	2407	Y01	CAD-CBH-CAT	12.15	128.62	109.43
9	A	2406	Y01	CAD-CBH-CAT	12.12	128.57	109.43
9	A	2403	Y01	CAD-CBH-CAT	11.61	127.76	109.43
9	A	2407	Y01	CAK-CBD-CBG	-11.13	94.77	110.91
9	A	2403	Y01	CAK-CBD-CBG	-10.09	96.29	110.91
9	A	2407	Y01	CAD-CBH-CAZ	-9.97	92.21	108.34
9	A	2406	Y01	CAK-CBD-CBG	-9.92	96.53	110.91
9	A	2403	Y01	CAD-CBH-CAZ	-9.91	92.31	108.34

Continued on next page...

Continued from previous page...

Mol	Chain	Res	Type	Atoms	Z	Observed(°)	Ideal(°)
9	A	2406	Y01	CAD-CBH-CAZ	-9.84	92.41	108.34
9	A	2406	Y01	CAQ-CBG-CBD	-9.17	103.98	119.08
9	A	2403	Y01	CBH-CBF-CBD	-8.88	99.42	112.73
9	A	2407	Y01	CAQ-CBG-CBD	-8.78	104.61	119.08
9	A	2403	Y01	CAV-CAZ-CBH	-8.50	105.12	116.42
9	A	2406	Y01	CBD-CAK-CAI	-8.47	100.56	112.73
9	A	2406	Y01	CBI-CBE-CBB	-8.34	106.43	119.49
9	A	2406	Y01	CBH-CBF-CBD	-8.32	100.26	112.73
9	A	2403	Y01	CBI-CBE-CBB	-8.16	106.71	119.49
9	A	2407	Y01	CBI-CBE-CBB	-8.15	106.72	119.49
9	A	2403	Y01	CAQ-CBG-CBD	-8.11	105.73	119.08
9	A	2407	Y01	CBD-CAK-CAI	-7.98	101.27	112.73
9	A	2407	Y01	CAV-CAZ-CBH	-7.98	105.82	116.42
9	A	2407	Y01	CBG-CBI-CBE	-7.90	90.71	100.07
9	A	2407	Y01	CBH-CBF-CBD	-7.57	101.38	112.73
9	A	2406	Y01	CAV-CAZ-CBH	-7.35	106.65	116.42
9	A	2407	Y01	CAT-CBH-CBF	-7.30	98.54	108.73
9	A	2403	Y01	CBD-CAK-CAI	-7.22	102.36	112.73
9	A	2406	Y01	CBG-CBI-CBE	-7.09	91.67	100.07
9	A	2406	Y01	CAT-CBH-CBF	-7.05	98.88	108.73
9	A	2403	Y01	CAV-CAZ-CAI	7.00	130.69	120.61
9	A	2406	Y01	CAV-CAZ-CAI	6.84	130.47	120.61
9	A	2407	Y01	CAV-CAZ-CAI	6.79	130.40	120.61
9	A	2403	Y01	CAT-CBH-CBF	-6.66	99.42	108.73
9	A	2403	Y01	CBG-CBI-CBE	-6.07	92.88	100.07
9	A	2403	Y01	CBI-CBG-CBD	-6.01	105.47	114.38
9	A	2406	Y01	CBI-CBG-CBD	-5.68	105.97	114.38
9	A	2403	Y01	CAE-CBI-CBE	5.46	121.89	111.71
9	A	2407	Y01	OAW-CAY-CAM	5.28	122.88	111.50
9	A	2403	Y01	CAP-CAQ-CBG	-5.27	94.69	105.13
9	A	2407	Y01	CAE-CBI-CBE	5.25	121.50	111.71
9	A	2403	Y01	OAW-CAY-CAM	5.19	122.68	111.50
9	A	2406	Y01	CAP-CAQ-CBG	-5.15	94.93	105.13
9	A	2406	Y01	OAW-CAY-CAM	5.14	122.59	111.50
9	A	2406	Y01	CAE-CBI-CBE	5.08	121.18	111.71
9	A	2407	Y01	CBI-CBG-CBD	-5.06	106.89	114.38
9	A	2406	Y01	CAC-CBB-CAO	4.80	117.89	110.36
9	A	2407	Y01	CAS-CAU-CBI	-4.66	104.78	112.78
9	A	2403	Y01	CAE-CBI-CAU	-4.66	103.24	110.59
7	D	2002	NAG	C1-O5-C5	4.65	118.50	112.19
9	A	2407	Y01	CAP-CAQ-CBG	-4.60	96.01	105.13
9	A	2403	Y01	CAC-CBB-CAO	4.58	117.54	110.36

Continued on next page...

Continued from previous page...

Mol	Chain	Res	Type	Atoms	Z	Observed(°)	Ideal(°)
12	A	2412	PT5	O16-C10-C12	4.57	121.35	111.50
9	A	2407	Y01	CAC-CBB-CAO	4.57	117.52	110.36
9	A	2407	Y01	CAE-CBI-CAU	-4.49	103.50	110.59
9	A	2406	Y01	CAE-CBI-CAU	-4.49	103.50	110.59
7	D	2002	NAG	C2-N2-C7	4.30	129.03	122.90
9	A	2406	Y01	CAS-CAU-CBI	-4.28	105.45	112.78
9	A	2403	Y01	OAW-CBC-CAV	4.27	116.85	108.12
9	A	2407	Y01	OAW-CBC-CAV	4.27	116.85	108.12
9	A	2403	Y01	CAS-CAU-CBI	-4.12	105.72	112.78
9	A	2403	Y01	CAS-CBF-CBD	3.96	117.46	111.75
10	A	2404	CLR	C22-C20-C17	-3.67	102.69	110.28
9	A	2407	Y01	OAW-CAY-OAG	-3.65	114.87	123.70
9	A	2406	Y01	OAW-CBC-CAV	3.63	115.56	108.12
9	A	2406	Y01	CAR-CAT-CBH	-3.59	104.97	112.74
9	A	2406	Y01	CAS-CBF-CBD	3.58	116.92	111.75
9	A	2406	Y01	OAW-CAY-OAG	-3.53	115.18	123.70
9	A	2403	Y01	OAW-CAY-OAG	-3.52	115.19	123.70
9	A	2407	Y01	CAU-CAS-CBF	-3.51	107.03	113.11
9	A	2406	Y01	CAO-CBB-CBE	-3.48	103.09	110.28
9	A	2407	Y01	CAQ-CBG-CBI	3.29	107.81	103.84
9	A	2403	Y01	CAO-CBB-CBE	-3.26	103.56	110.28
9	A	2407	Y01	CAO-CBB-CBE	-3.24	103.59	110.28
9	A	2407	Y01	CAS-CBF-CBD	3.13	116.26	111.75
9	A	2407	Y01	CBF-CBD-CBG	-3.08	104.96	109.09
9	A	2403	Y01	CBF-CBD-CBG	-3.06	105.00	109.09
9	A	2403	Y01	CAT-CBH-CAZ	3.01	114.27	108.75
9	A	2403	Y01	CAQ-CBG-CBI	2.99	107.45	103.84
9	A	2406	Y01	CBF-CBH-CAZ	2.99	114.34	109.65
9	A	2406	Y01	CAU-CAS-CBF	-2.91	108.08	113.11
9	A	2407	Y01	CAT-CBH-CAZ	2.88	114.03	108.75
10	A	2408	CLR	C22-C20-C17	-2.87	104.35	110.28
10	A	2409	CLR	C13-C17-C20	-2.86	115.00	119.49
10	A	2405	CLR	C22-C20-C17	-2.81	104.48	110.28
12	A	2412	PT5	O18-C11-C31	2.80	120.70	111.91
9	A	2407	Y01	CAU-CBI-CBG	2.79	111.60	107.27
9	A	2406	Y01	CBC-CAV-CAZ	2.75	115.80	111.52
9	A	2406	Y01	CAC-CBB-CBE	-2.75	108.71	112.92
9	A	2407	Y01	CAC-CBB-CBE	-2.74	108.73	112.92
9	A	2403	Y01	CAK-CBD-CBF	2.72	113.00	109.71
9	A	2407	Y01	CBF-CBH-CAZ	2.53	113.61	109.65
11	A	2411	3PE	C2-O21-C21	2.52	124.00	117.79
10	A	2404	CLR	C16-C17-C20	-2.52	108.25	112.15

Continued on next page...

Continued from previous page...

Mol	Chain	Res	Type	Atoms	Z	Observed(°)	Ideal(°)
10	A	2405	CLR	C21-C20-C22	-2.50	106.44	110.36
9	A	2407	Y01	CAR-CAT-CBH	-2.50	107.33	112.74
9	A	2406	Y01	CAQ-CBG-CBI	2.47	106.82	103.84
9	A	2406	Y01	CAU-CBI-CBG	2.47	111.10	107.27
10	A	2408	CLR	C13-C17-C20	-2.44	115.66	119.49
9	A	2403	Y01	CAU-CAS-CBF	-2.40	108.96	113.11
11	A	2410	3PE	O12-P-O14	2.39	124.04	112.24
10	A	2404	CLR	C7-C8-C14	-2.37	107.47	110.91
10	A	2405	CLR	C13-C17-C20	-2.37	115.78	119.49
9	A	2403	Y01	CAP-CBE-CBI	2.36	106.69	103.84
9	A	2406	Y01	CAT-CBH-CAZ	2.35	113.06	108.75
9	A	2403	Y01	CAC-CBB-CBE	-2.35	109.32	112.92
9	A	2407	Y01	CAP-CBE-CBB	2.34	115.77	112.15
10	A	2408	CLR	C12-C13-C14	-2.33	103.65	107.27
11	A	2411	3PE	O12-P-O14	2.31	123.66	112.24
10	A	2409	CLR	C18-C13-C12	2.28	114.18	110.59
9	A	2403	Y01	CAU-CBI-CBG	2.26	110.78	107.27
10	A	2404	CLR	C18-C13-C12	2.25	114.15	110.59
10	A	2409	CLR	C7-C8-C14	-2.23	107.68	110.91
10	A	2408	CLR	C19-C10-C9	-2.22	109.04	111.68
10	A	2408	CLR	C18-C13-C12	2.21	114.07	110.59
10	A	2405	CLR	C18-C13-C12	2.19	114.06	110.59
10	A	2405	CLR	C7-C8-C14	-2.11	107.84	110.91
10	A	2408	CLR	C4-C5-C6	-2.11	117.57	120.61
10	A	2405	CLR	C12-C13-C14	-2.10	104.02	107.27
10	A	2408	CLR	C24-C23-C22	-2.09	103.64	113.24
9	A	2406	Y01	CBF-CBD-CBG	-2.08	106.31	109.09
10	A	2404	CLR	C10-C5-C6	2.08	126.08	122.90
10	A	2405	CLR	C24-C23-C22	-2.08	103.69	113.24
10	A	2409	CLR	C11-C12-C13	-2.06	109.25	112.78
10	A	2408	CLR	C11-C12-C13	-2.03	109.30	112.78
10	A	2409	CLR	C24-C23-C22	-2.02	103.94	113.24
10	A	2404	CLR	C12-C13-C14	-2.02	104.13	107.27
10	A	2404	CLR	C24-C23-C22	-2.01	104.00	113.24
9	A	2403	Y01	CAP-CBE-CBB	2.00	115.25	112.15

There are no chirality outliers.

All (122) torsion outliers are listed below:

Mol	Chain	Res	Type	Atoms
9	A	2403	Y01	OAG-CAY-OAW-CBC
9	A	2403	Y01	CAM-CAY-OAW-CBC

Continued on next page...

Continued from previous page...

Mol	Chain	Res	Type	Atoms
9	A	2403	Y01	CAX-CAL-CAM-CAY
10	A	2409	CLR	C13-C17-C20-C21
11	A	2410	3PE	O21-C2-C3-O31
11	A	2411	3PE	C11-O13-P-O14
12	A	2412	PT5	C7-O13-P1-O11
12	A	2412	PT5	C5-O5-P5-O52
12	A	2412	PT5	C12-C10-O16-C8
12	A	2412	PT5	O19-C11-O18-C9
10	A	2409	CLR	C16-C17-C20-C21
10	A	2409	CLR	C16-C17-C20-C22
10	A	2409	CLR	C13-C17-C20-C22
11	A	2411	3PE	O22-C21-O21-C2
12	A	2412	PT5	O17-C10-O16-C8
12	A	2412	PT5	C31-C11-O18-C9
11	A	2411	3PE	C22-C21-O21-C2
9	A	2407	Y01	CAJ-CAO-CBB-CAC
10	A	2409	CLR	C21-C20-C22-C23
7	A	2401	NAG	O5-C5-C6-O6
9	A	2406	Y01	CAJ-CAO-CBB-CAC
7	A	2401	NAG	C4-C5-C6-O6
9	A	2403	Y01	CAJ-CAO-CBB-CBE
9	A	2407	Y01	CAJ-CAO-CBB-CBE
9	A	2407	Y01	CAX-CAL-CAM-CAY
10	A	2409	CLR	C17-C20-C22-C23
7	A	2401	NAG	C8-C7-N2-C2
7	A	2401	NAG	O7-C7-N2-C2
7	D	2002	NAG	C8-C7-N2-C2
7	D	2002	NAG	O7-C7-N2-C2
9	A	2406	Y01	CAX-CAL-CAM-CAY
12	A	2412	PT5	C11-C31-C32-C33
11	A	2411	3PE	C21-C22-C23-C24
10	A	2408	CLR	C20-C22-C23-C24
10	A	2405	CLR	C20-C22-C23-C24
9	A	2403	Y01	CAJ-CAO-CBB-CAC
9	A	2407	Y01	CAO-CBB-CBE-CBI
12	A	2412	PT5	C9-C8-O16-C10
12	A	2412	PT5	C37-C38-C39-C40
7	D	2002	NAG	C4-C5-C6-O6
11	A	2411	3PE	C33-C34-C35-C36
10	A	2408	CLR	C17-C20-C22-C23
7	D	2002	NAG	O5-C5-C6-O6
10	A	2409	CLR	C23-C24-C25-C26

Continued on next page...

Continued from previous page...

Mol	Chain	Res	Type	Atoms
12	A	2412	PT5	C12-C13-C14-C15
12	A	2412	PT5	C33-C34-C35-C36
10	A	2404	CLR	C22-C23-C24-C25
9	A	2407	Y01	CAN-CAJ-CAO-CBB
10	A	2409	CLR	C22-C23-C24-C25
11	A	2410	3PE	C1-C2-C3-O31
11	A	2411	3PE	C1-C2-C3-O31
12	A	2412	PT5	C27-C28-C29-C30
9	A	2407	Y01	CAC-CBB-CBE-CBI
11	A	2410	3PE	C3A-C3B-C3C-C3D
10	A	2405	CLR	C13-C17-C20-C21
12	A	2412	PT5	C6-C5-O5-P5
9	A	2406	Y01	CAO-CBB-CBE-CBI
12	A	2412	PT5	C7-C8-C9-O18
9	A	2407	Y01	CAO-CBB-CBE-CAP
12	A	2412	PT5	C34-C35-C36-C37
11	A	2411	3PE	C22-C23-C24-C25
10	A	2409	CLR	C23-C24-C25-C27
11	A	2411	3PE	C32-C33-C34-C35
9	A	2406	Y01	CAJ-CAN-CBA-CAA
11	A	2411	3PE	C36-C37-C38-C39
11	A	2410	3PE	O11-C1-C2-C3
9	A	2403	Y01	CAN-CAJ-CAO-CBB
11	A	2410	3PE	C38-C39-C3A-C3B
10	A	2404	CLR	C23-C24-C25-C26
9	A	2406	Y01	CAC-CBB-CBE-CBI
12	A	2412	PT5	O16-C8-C9-O18
11	A	2410	3PE	C22-C23-C24-C25
11	A	2411	3PE	C37-C38-C39-C3A
12	A	2412	PT5	C4-C5-O5-P5
12	A	2412	PT5	C5-O5-P5-O53
11	A	2411	3PE	C2E-C2F-C2G-C2H
10	A	2408	CLR	C13-C17-C20-C21
11	A	2411	3PE	C35-C36-C37-C38
9	A	2406	Y01	CAJ-CAN-CBA-CAB
10	A	2404	CLR	C23-C24-C25-C27
11	A	2411	3PE	O11-C1-C2-C3
10	A	2404	CLR	C21-C20-C22-C23
11	A	2411	3PE	C12-C11-O13-P
12	A	2412	PT5	C36-C37-C38-C39
11	A	2411	3PE	O11-C1-C2-O21
10	A	2408	CLR	C21-C20-C22-C23

Continued on next page...

Continued from previous page...

Mol	Chain	Res	Type	Atoms
9	A	2407	Y01	CAC-CBB-CBE-CAP
11	A	2410	3PE	O11-C1-C2-O21
10	A	2408	CLR	C23-C24-C25-C27
11	A	2411	3PE	O21-C2-C3-O31
11	A	2410	3PE	C1-O11-P-O13
12	A	2412	PT5	C7-O13-P1-O1
11	A	2411	3PE	C24-C25-C26-C27
9	A	2406	Y01	CAO-CBB-CBE-CAP
11	A	2410	3PE	C21-C22-C23-C24
9	A	2403	Y01	CAM-CAL-CAX-OAH
12	A	2412	PT5	C31-C32-C33-C34
11	A	2411	3PE	C2A-C2B-C2C-C2D
9	A	2403	Y01	CAM-CAL-CAX-OAF
9	A	2407	Y01	CAM-CAL-CAX-OAF
12	A	2412	PT5	C15-C16-C17-C18
12	A	2412	PT5	C21-C22-C23-C24
10	A	2404	CLR	C20-C22-C23-C24
12	A	2412	PT5	C8-C7-O13-P1
10	A	2405	CLR	C13-C17-C20-C22
10	A	2405	CLR	C16-C17-C20-C21
9	A	2406	Y01	CAM-CAL-CAX-OAH
11	A	2411	3PE	C3-C2-O21-C21
9	A	2407	Y01	CAM-CAL-CAX-OAH
9	A	2406	Y01	CAM-CAL-CAX-OAF
12	A	2412	PT5	C4-O4-P4-O43
9	A	2407	Y01	OAG-CAY-OAW-CBC
7	D	2001	NAG	C3-C2-N2-C7
7	D	2002	NAG	C3-C2-N2-C7
12	A	2412	PT5	C13-C14-C15-C16
12	A	2412	PT5	C24-C25-C26-C27
11	A	2410	3PE	C1-O11-P-O14
11	A	2411	3PE	C1-C2-O21-C21
11	A	2410	3PE	C3F-C3G-C3H-C3I
9	A	2407	Y01	CAL-CAM-CAY-OAW
7	D	2001	NAG	C1-C2-N2-C7
11	A	2410	3PE	C3B-C3C-C3D-C3E

There are no ring outliers.

12 monomers are involved in 75 short contacts:

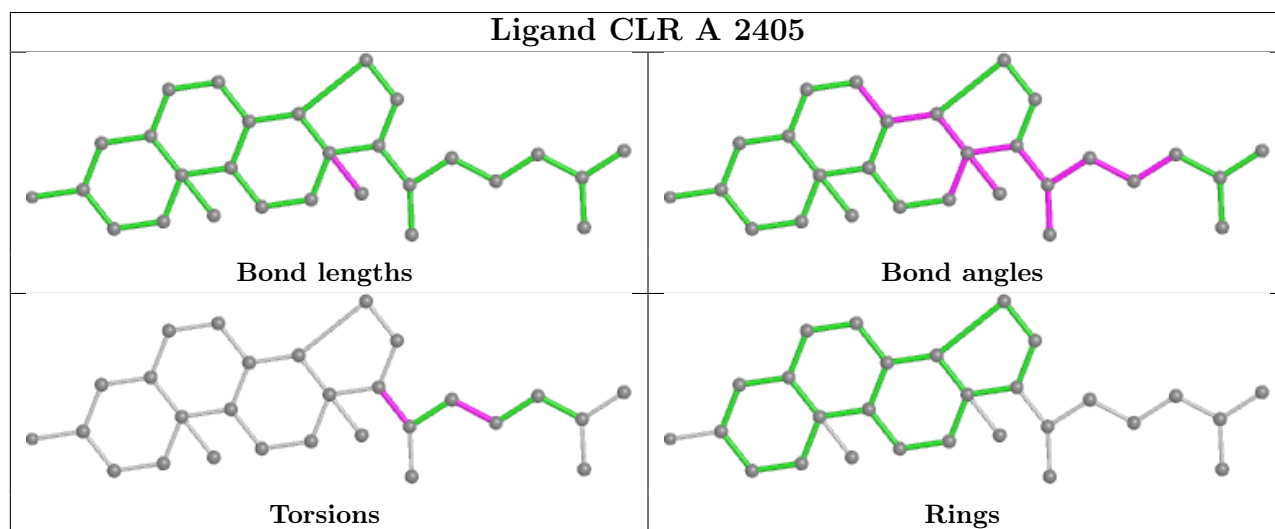
Mol	Chain	Res	Type	Clashes	Symm-Clashes
10	A	2405	CLR	3	0

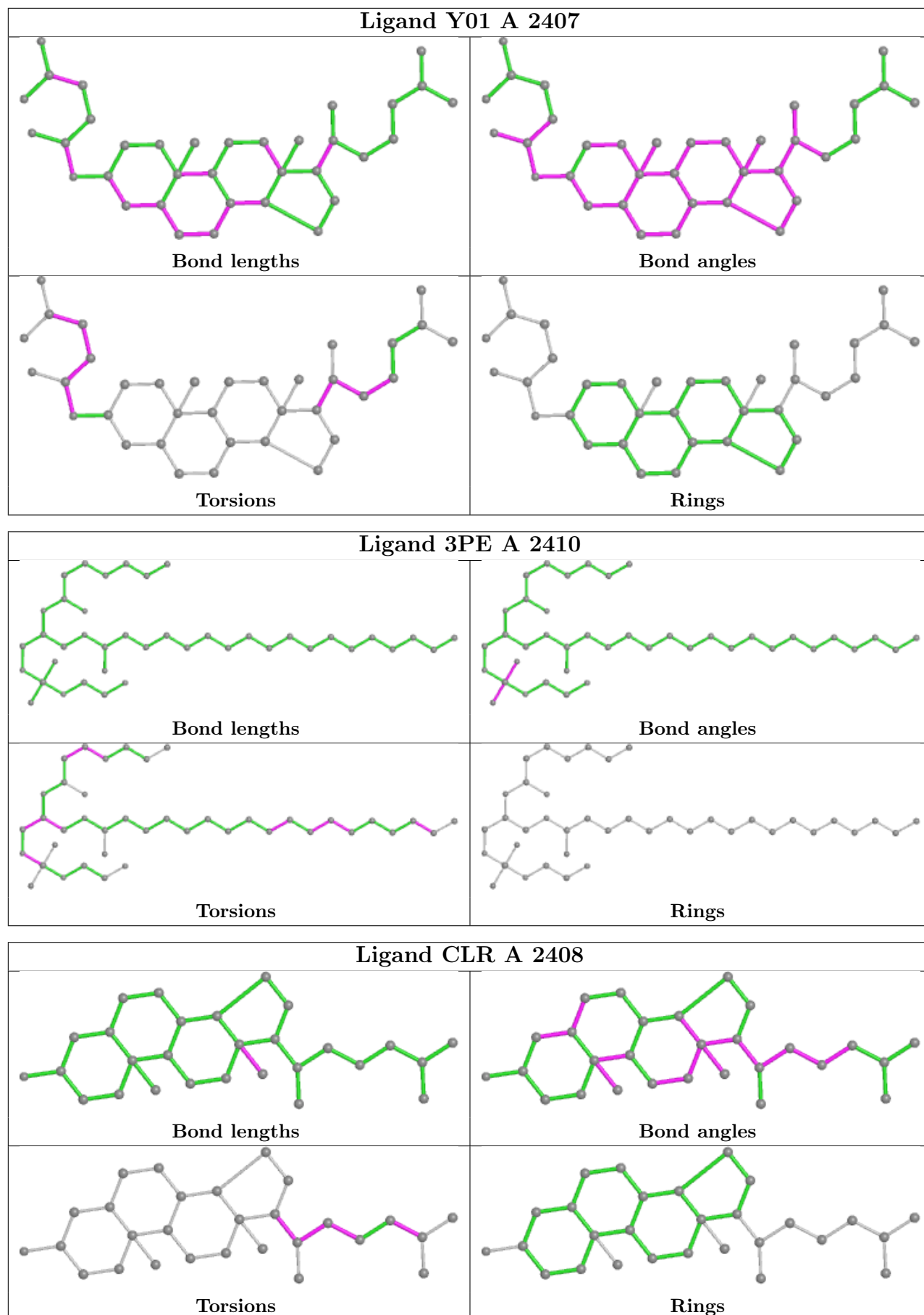
Continued on next page...

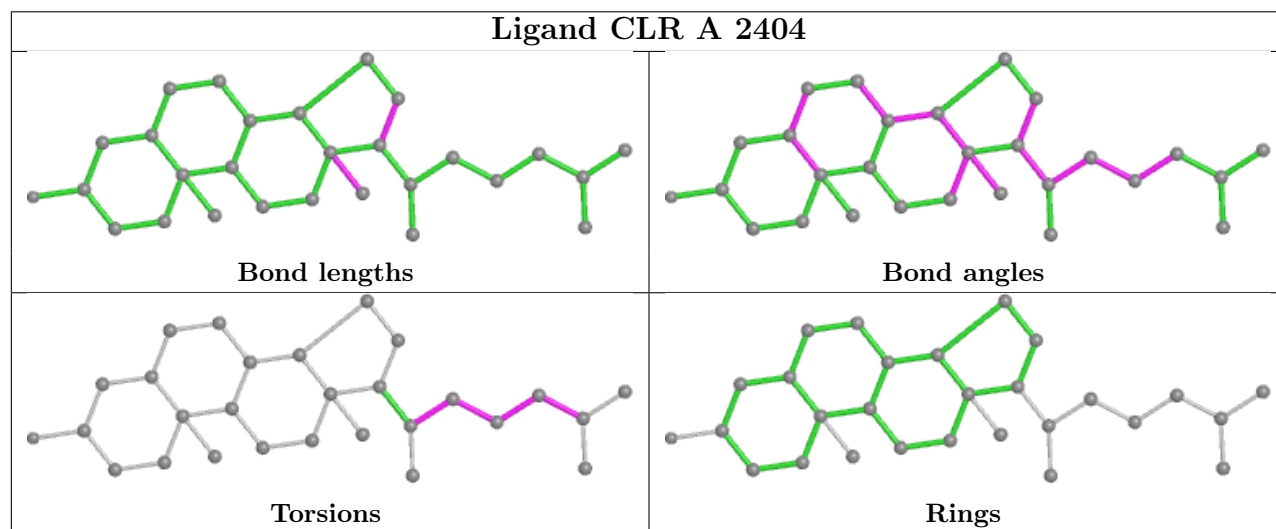
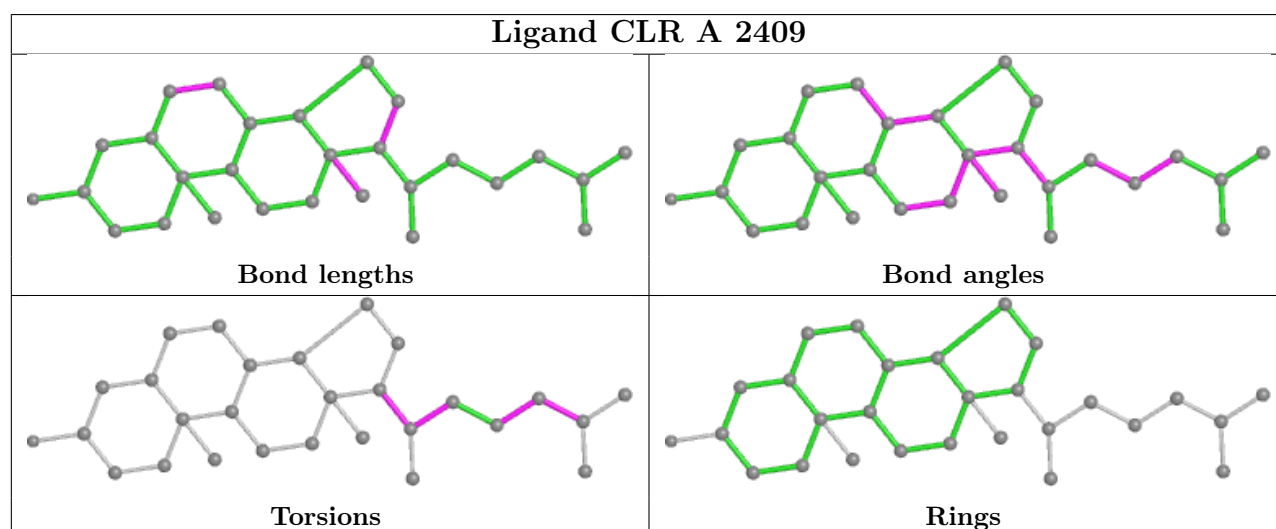
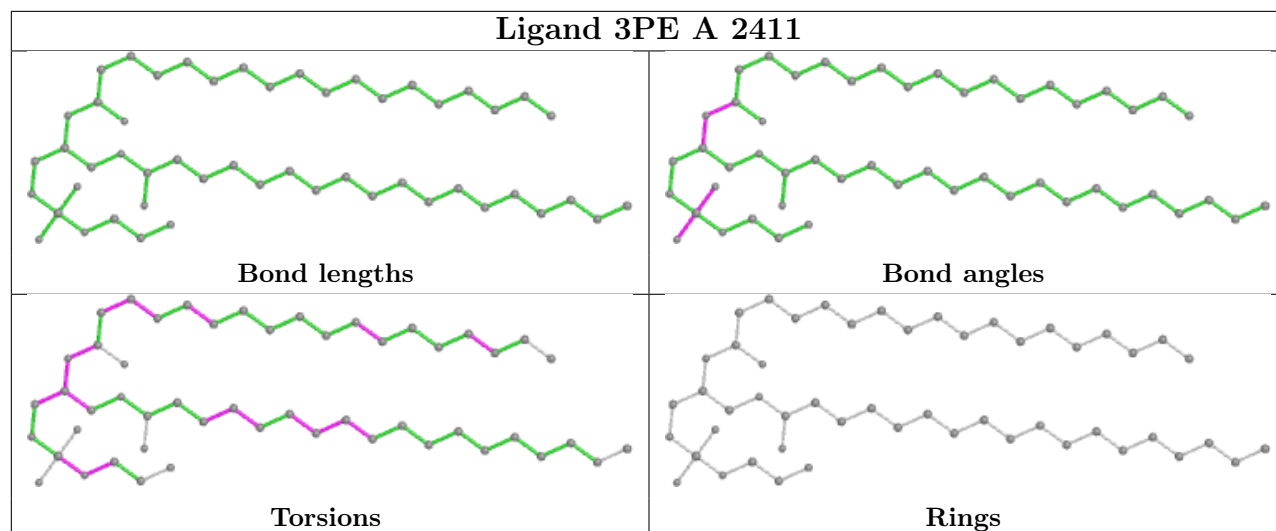
Continued from previous page...

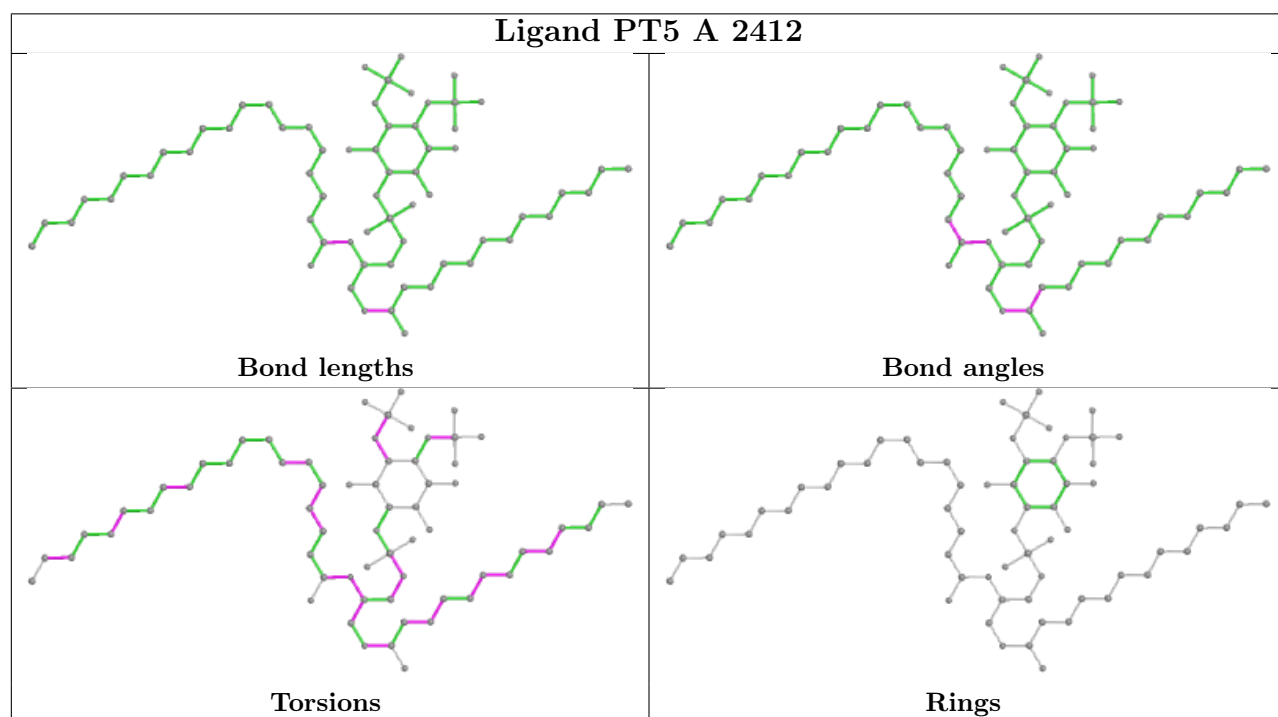
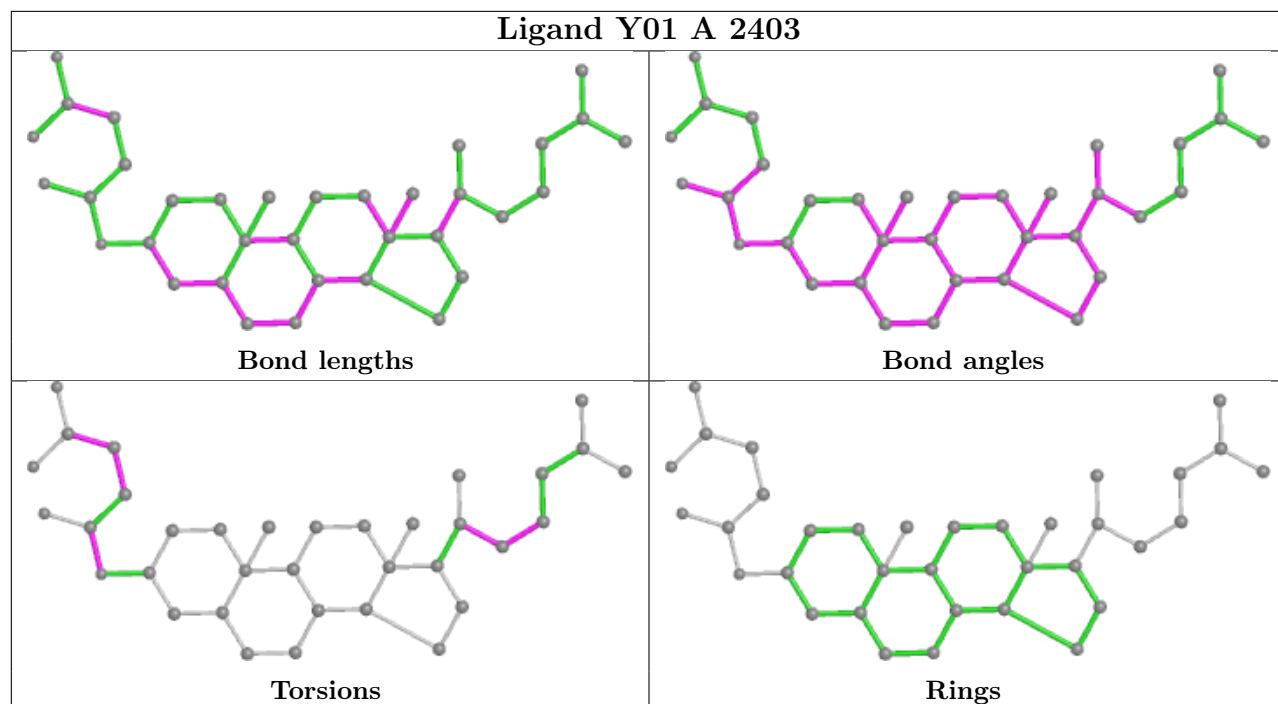
Mol	Chain	Res	Type	Clashes	Symm-Clashes
7	D	2001	NAG	1	0
7	D	2002	NAG	1	0
9	A	2407	Y01	19	0
11	A	2410	3PE	2	0
10	A	2408	CLR	7	0
11	A	2411	3PE	2	0
10	A	2409	CLR	3	0
7	A	2401	NAG	1	0
9	A	2403	Y01	18	0
12	A	2412	PT5	8	0
9	A	2406	Y01	15	0

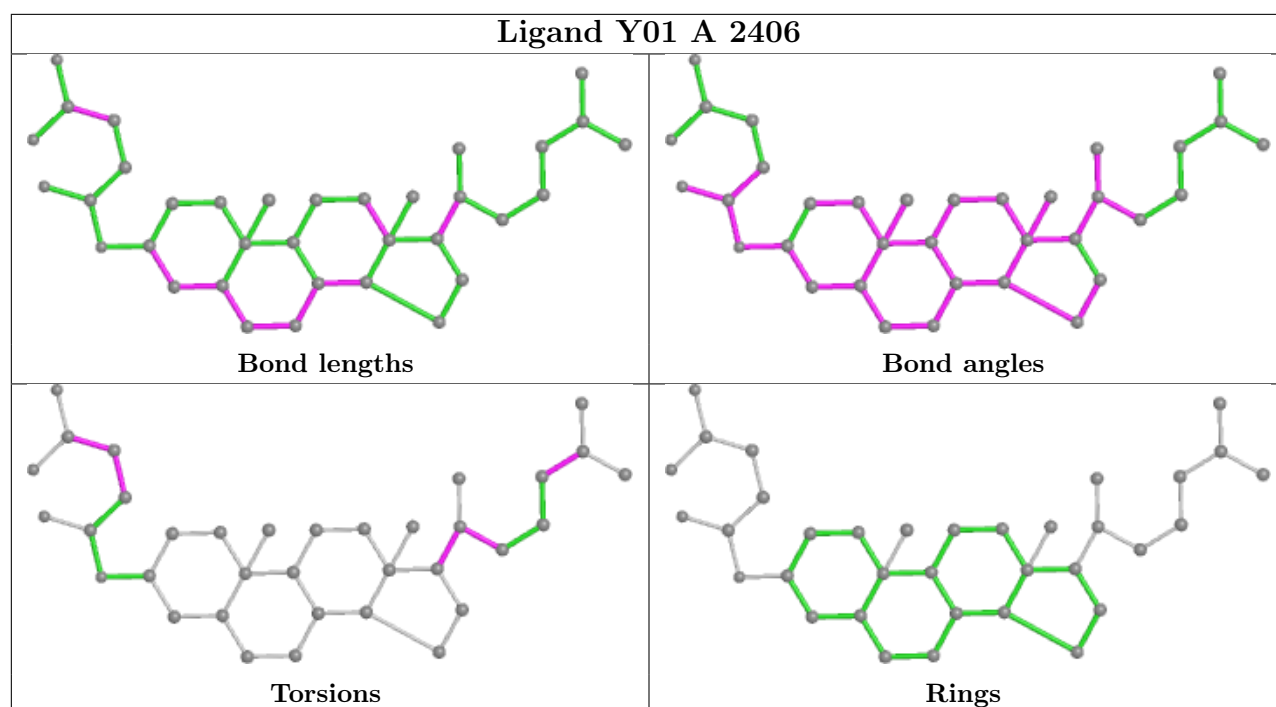
The following is a two-dimensional graphical depiction of Mogul quality analysis of bond lengths, bond angles, torsion angles, and ring geometry for all instances of the Ligand of Interest. In addition, ligands with molecular weight > 250 and outliers as shown on the validation Tables will also be included. For torsion angles, if less than 5% of the Mogul distribution of torsion angles is within 10 degrees of the torsion angle in question, then that torsion angle is considered an outlier. Any bond that is central to one or more torsion angles identified as an outlier by Mogul will be highlighted in the graph. For rings, the root-mean-square deviation (RMSD) between the ring in question and similar rings identified by Mogul is calculated over all ring torsion angles. If the average RMSD is greater than 60 degrees and the minimal RMSD between the ring in question and any Mogul-identified rings is also greater than 60 degrees, then that ring is considered an outlier. The outliers are highlighted in purple. The color gray indicates Mogul did not find sufficient equivalents in the CSD to analyse the geometry.











5.7 Other polymers [i](#)

There are no such residues in this entry.

5.8 Polymer linkage issues [i](#)

There are no chain breaks in this entry.

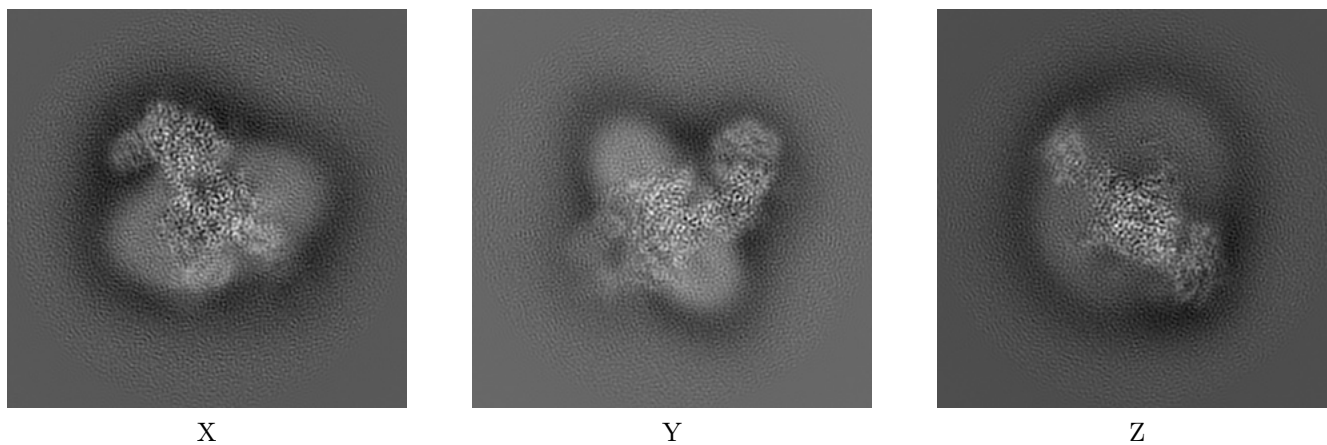
6 Map visualisation [i](#)

This section contains visualisations of the EMDB entry EMD-23868. These allow visual inspection of the internal detail of the map and identification of artifacts.

No raw map or half-maps were deposited for this entry and therefore no images, graphs, etc. pertaining to the raw map can be shown.

6.1 Orthogonal projections [i](#)

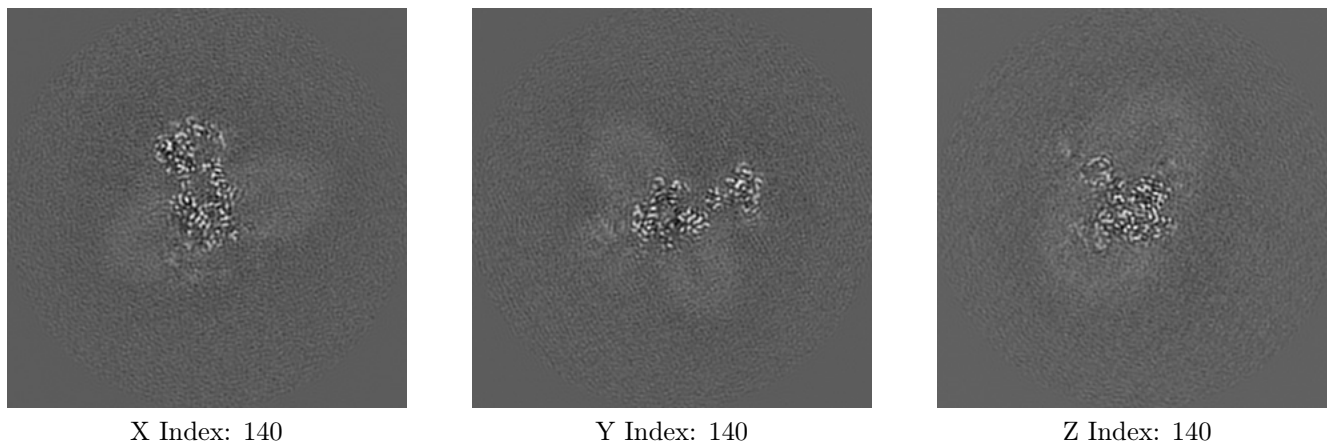
6.1.1 Primary map



The images above show the map projected in three orthogonal directions.

6.2 Central slices [i](#)

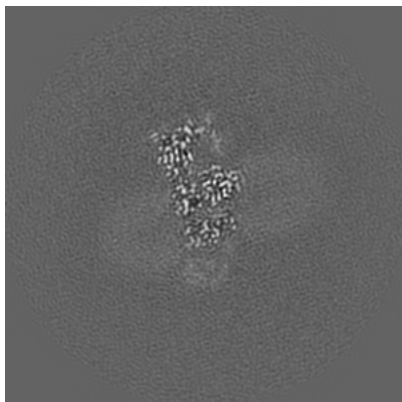
6.2.1 Primary map



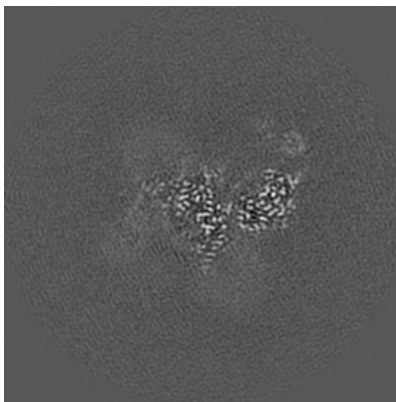
The images above show central slices of the map in three orthogonal directions.

6.3 Largest variance slices [i](#)

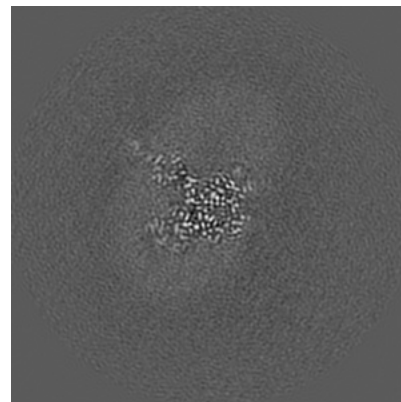
6.3.1 Primary map



X Index: 134



Y Index: 127



Z Index: 142

The images above show the largest variance slices of the map in three orthogonal directions.

6.4 Orthogonal surface views [i](#)

6.4.1 Primary map



X



Y



Z

The images above show the 3D surface view of the map at the recommended contour level 0.023. These images, in conjunction with the slice images, may facilitate assessment of whether an appropriate contour level has been provided.

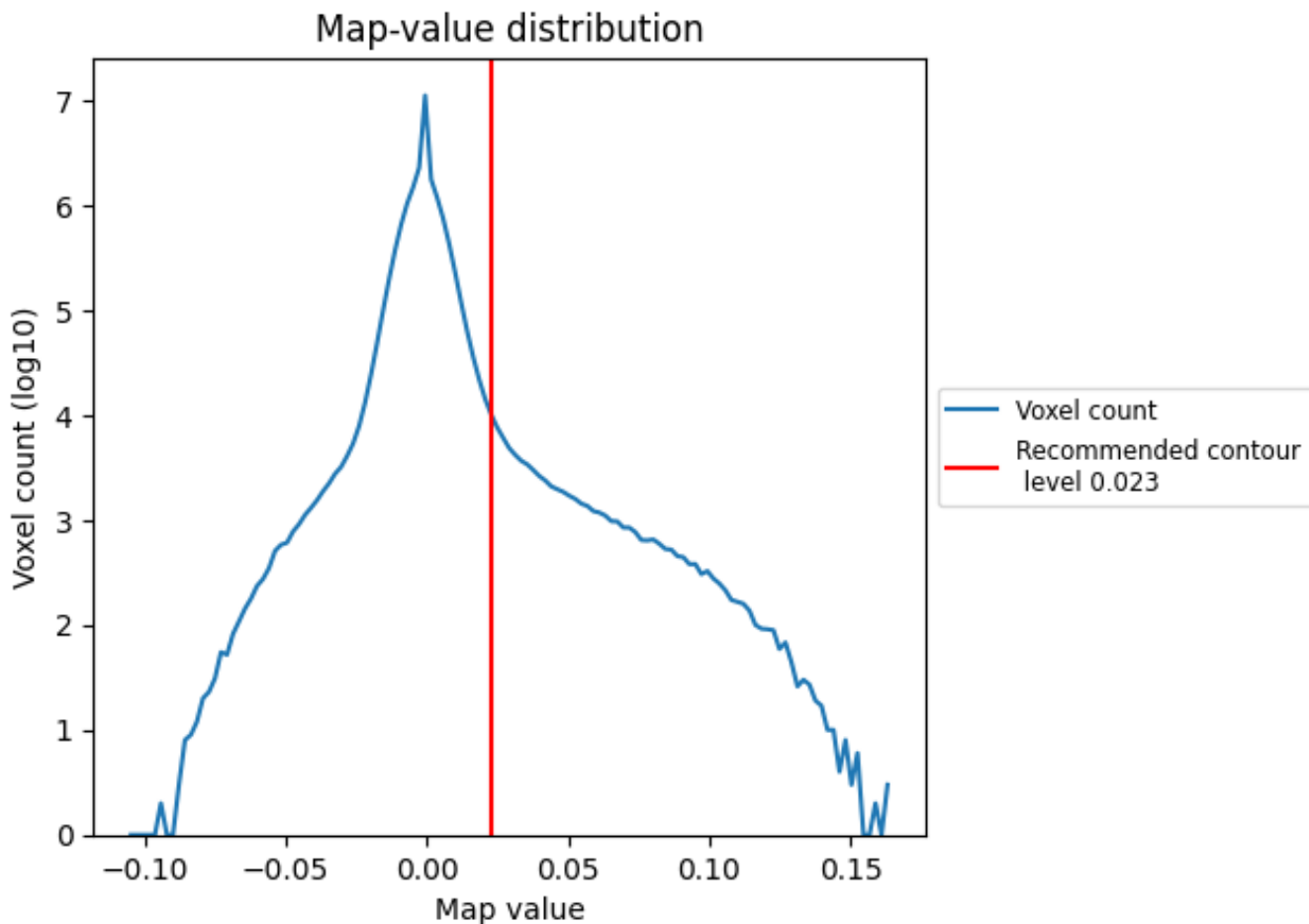
6.5 Mask visualisation

This section was not generated. No masks/segmentation were deposited.

7 Map analysis [i](#)

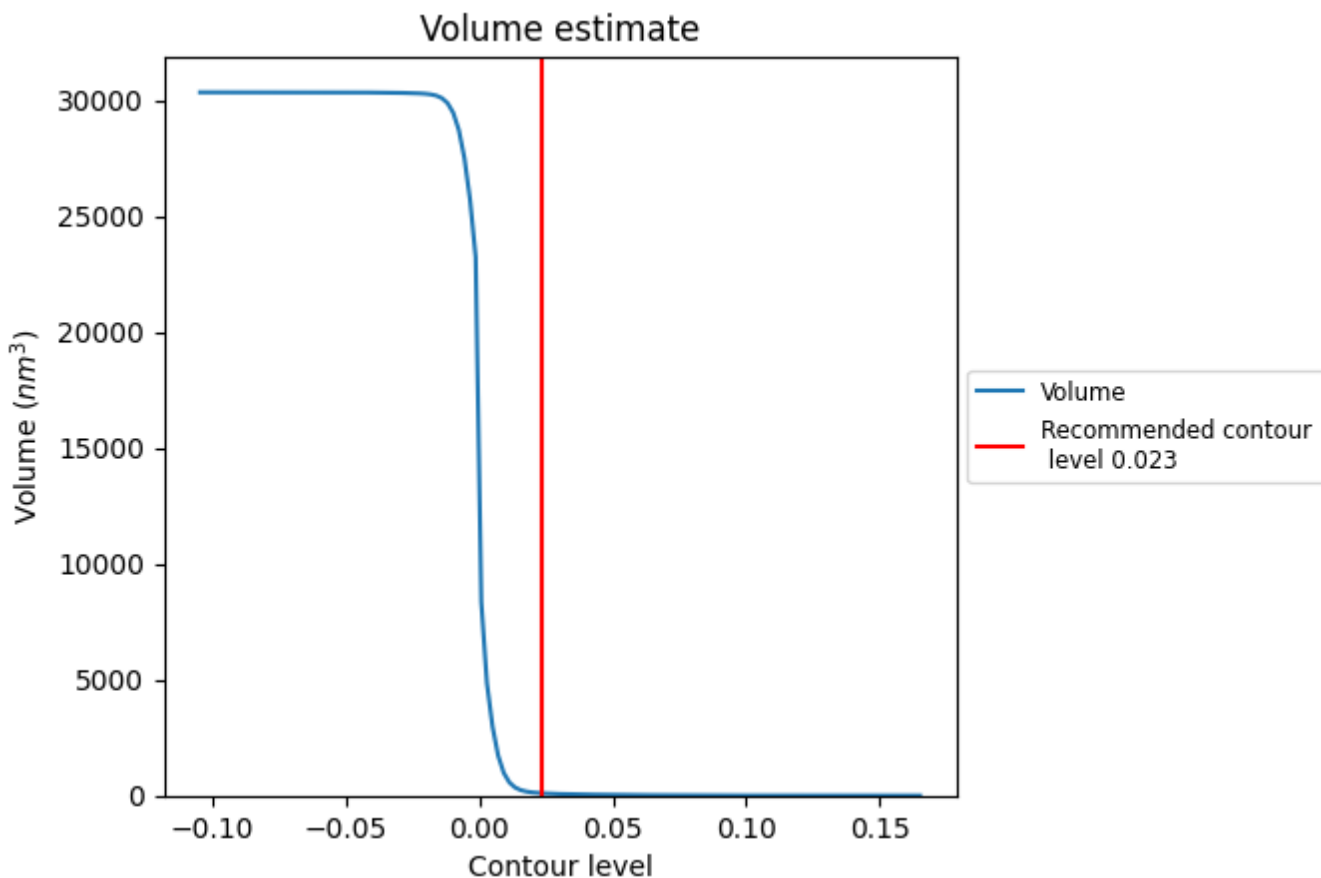
This section contains the results of statistical analysis of the map.

7.1 Map-value distribution [i](#)



The map-value distribution is plotted in 128 intervals along the x-axis. The y-axis is logarithmic. A spike in this graph at zero usually indicates that the volume has been masked.

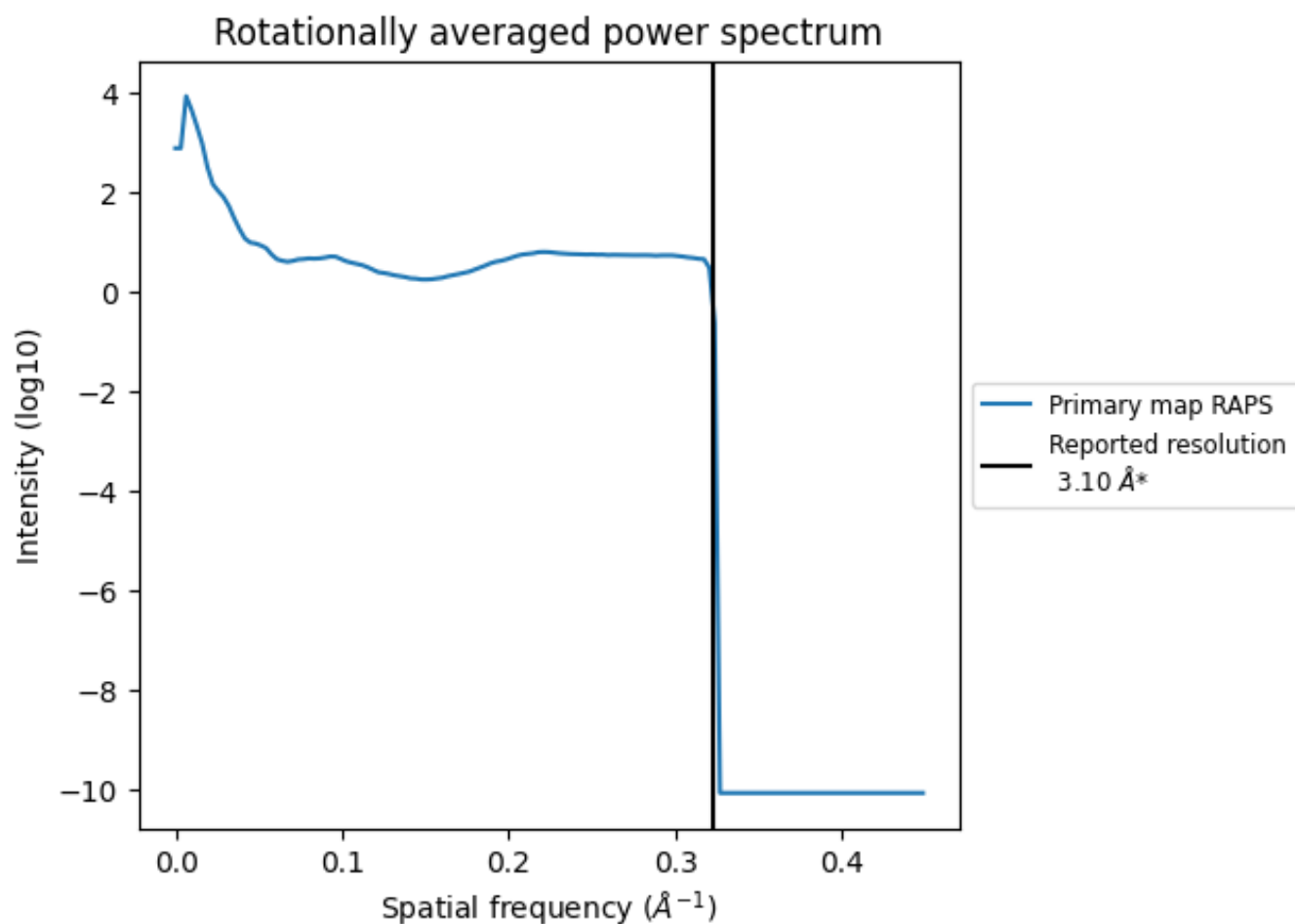
7.2 Volume estimate [i](#)



The volume at the recommended contour level is 103 nm³; this corresponds to an approximate mass of 93 kDa.

The volume estimate graph shows how the enclosed volume varies with the contour level. The recommended contour level is shown as a vertical line and the intersection between the line and the curve gives the volume of the enclosed surface at the given level.

7.3 Rotationally averaged power spectrum [\(i\)](#)



*Reported resolution corresponds to spatial frequency of 0.323\AA^{-1}

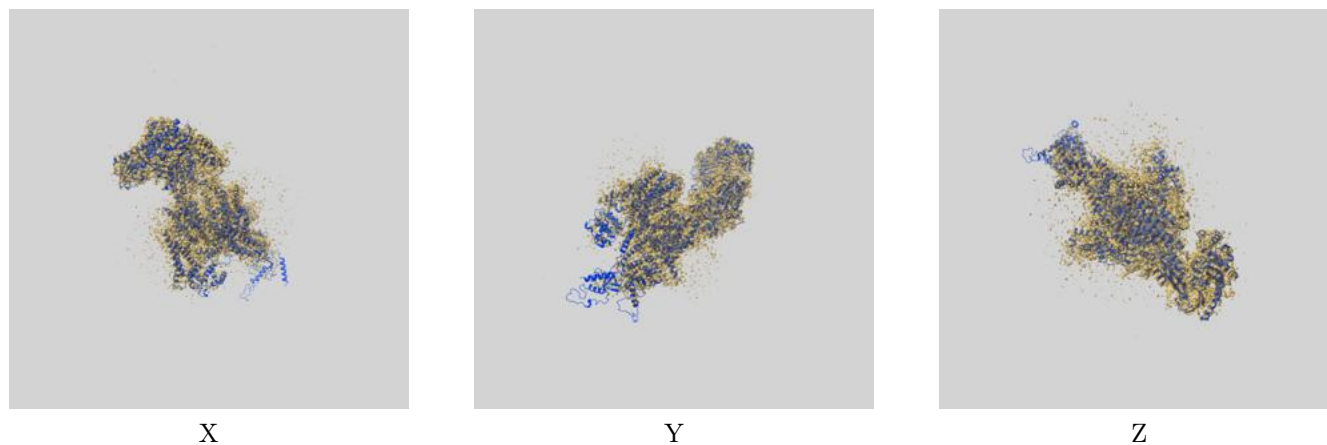
8 Fourier-Shell correlation

This section was not generated. No FSC curve or half-maps provided.

9 Map-model fit [i](#)

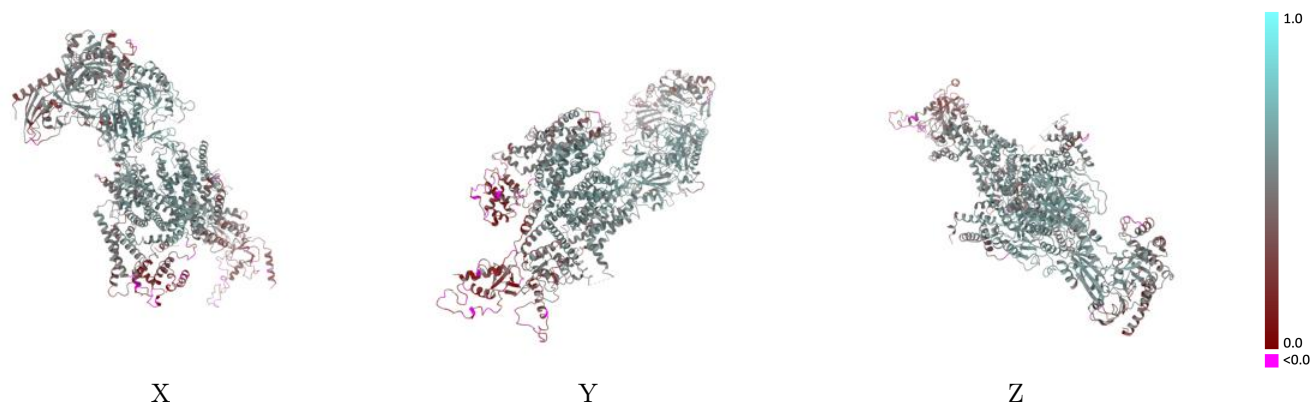
This section contains information regarding the fit between EMDB map EMD-23868 and PDB model 7MIY. Per-residue inclusion information can be found in section 3 on page 8.

9.1 Map-model overlay [i](#)



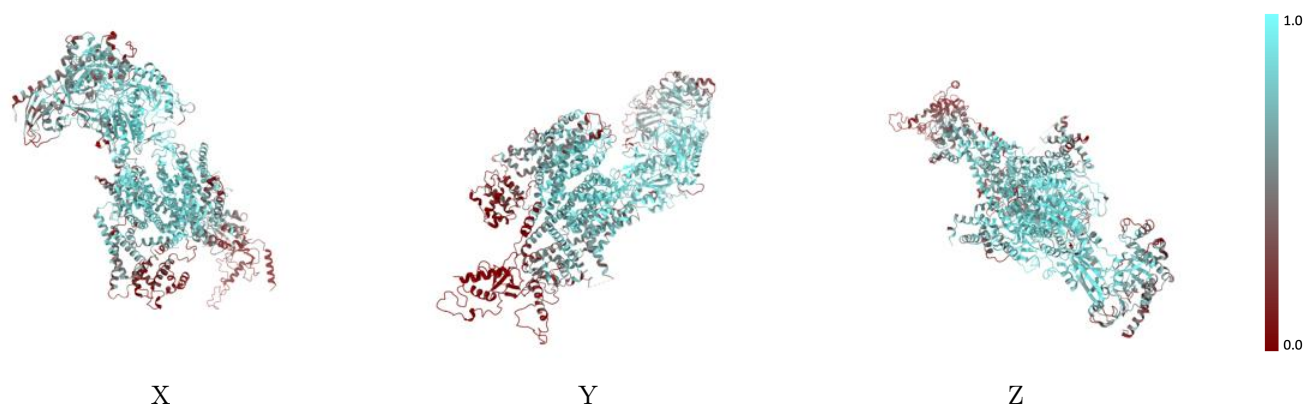
The images above show the 3D surface view of the map at the recommended contour level 0.023 at 50% transparency in yellow overlaid with a ribbon representation of the model coloured in blue. These images allow for the visual assessment of the quality of fit between the atomic model and the map.

9.2 Q-score mapped to coordinate model [i](#)



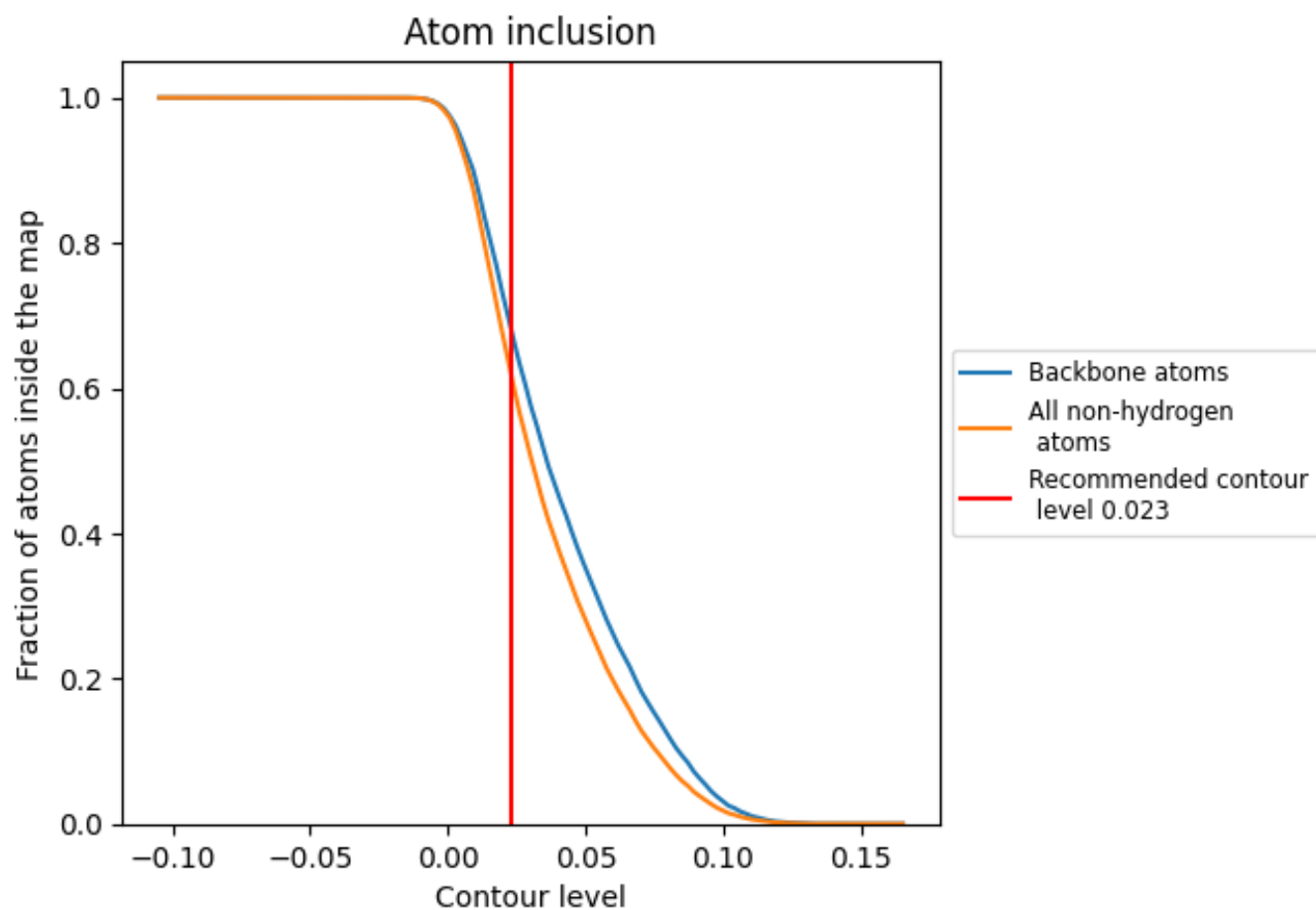
The images above show the model with each residue coloured according to its Q-score. This shows their resolvability in the map with higher Q-score values reflecting better resolvability. Please note: Q-score is calculating the resolvability of atoms, and thus high values are only expected at resolutions at which atoms can be resolved. Low Q-score values may therefore be expected for many entries.

9.3 Atom inclusion mapped to coordinate model [i](#)



The images above show the model with each residue coloured according to its atom inclusion. This shows to what extent they are inside the map at the recommended contour level (0.023).



















9.4 Atom inclusion [i](#)



At the recommended contour level, 68% of all backbone atoms, 62% of all non-hydrogen atoms, are inside the map.

9.5 Map-model fit summary

The table lists the average atom inclusion at the recommended contour level (0.023) and Q-score for the entire model and for each chain.

Chain	Atom inclusion	Q-score
All	 0.6168	 0.4720
A	 0.6465	 0.4870
B	 0.4524	 0.4090
C	 0.2300	 0.3000
D	 0.7092	 0.5110
E	 0.1071	 0.2630
F	 0.5714	 0.4500
G	 0.1786	 0.3590
H	 0.5000	 0.4540

