



Full wwPDB X-ray Structure Validation Report ⓘ

Sep 11, 2023 – 09:57 PM EDT

PDB ID : 4MW7
Title : Trypanosoma brucei methionyl-tRNA synthetase in complex with inhibitor 1
-{3-[(5-chloro-2-ethoxy-3-iodobenzyl)amino]propyl}-3-thiophen-3-ylurea
(Chem 1469)
Authors : Koh, C.Y.; Kim, J.E.; Wetzel, A.B.; de van der Schueren, W.J.; Shibata, S.;
Liu, J.; Zhang, Z.; Fan, E.; Verlinde, C.L.M.J.; Hol, W.G.J.
Deposited on : 2013-09-24
Resolution : 2.75 Å(reported)

This is a Full wwPDB X-ray Structure Validation Report for a publicly released PDB entry.

We welcome your comments at validation@mail.wwpdb.org

A user guide is available at

<https://www.wwpdb.org/validation/2017/XrayValidationReportHelp>

with specific help available everywhere you see the ⓘ symbol.

The types of validation reports are described at

<http://www.wwpdb.org/validation/2017/FAQs#types>.

The following versions of software and data (see [references](#) ①) were used in the production of this report:

MolProbity : 4.02b-467
Mogul : 1.8.5 (274361), CSD as541be (2020)
Xtrriage (Phenix) : 1.13
EDS : 2.35.1
buster-report : 1.1.7 (2018)
Percentile statistics : 20191225.v01 (using entries in the PDB archive December 25th 2019)
Refmac : 5.8.0158
CCP4 : 7.0.044 (Gargrove)
Ideal geometry (proteins) : Engh & Huber (2001)
Ideal geometry (DNA, RNA) : Parkinson et al. (1996)
Validation Pipeline (wwPDB-VP) : 2.35.1

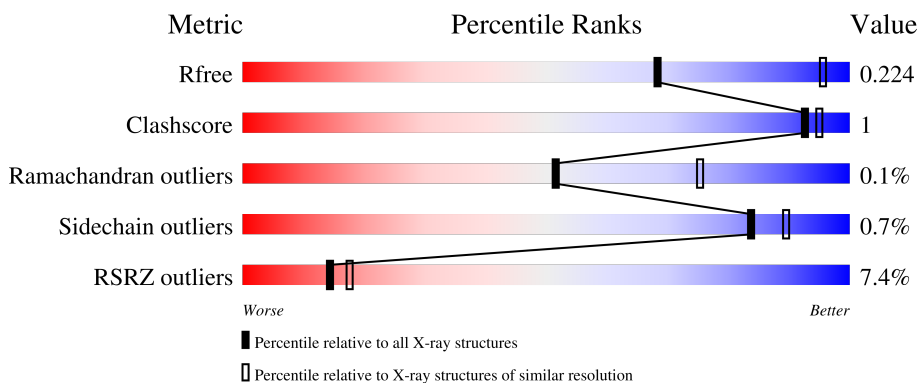
1 Overall quality at a glance

The following experimental techniques were used to determine the structure:

X-RAY DIFFRACTION

The reported resolution of this entry is 2.75 Å.

Percentile scores (ranging between 0-100) for global validation metrics of the entry are shown in the following graphic. The table shows the number of entries on which the scores are based.



Metric	Whole archive (#Entries)	Similar resolution (#Entries, resolution range(Å))
R_{free}	130704	1235 (2.78-2.74)
Clashscore	141614	1277 (2.78-2.74)
Ramachandran outliers	138981	1257 (2.78-2.74)
Sidechain outliers	138945	1257 (2.78-2.74)
RSRZ outliers	127900	1207 (2.78-2.74)

The table below summarises the geometric issues observed across the polymeric chains and their fit to the electron density. The red, orange, yellow and green segments of the lower bar indicate the fraction of residues that contain outliers for ≥ 3 , 2, 1 and 0 types of geometric quality criteria respectively. A grey segment represents the fraction of residues that are not modelled. The numeric value for each fraction is indicated below the corresponding segment, with a dot representing fractions $\leq 5\%$. The upper red bar (where present) indicates the fraction of residues that have poor fit to the electron density. The numeric value is given above the bar.

Mol	Chain	Length	Quality of chain
1	A	542	 5% 93%
1	B	542	 10% 92%

2 Entry composition [i](#)

There are 7 unique types of molecules in this entry. The entry contains 8649 atoms, of which 0 are hydrogens and 0 are deuteriums.

In the tables below, the ZeroOcc column contains the number of atoms modelled with zero occupancy, the AltConf column contains the number of residues with at least one atom in alternate conformation and the Trace column contains the number of residues modelled with at most 2 atoms.

- Molecule 1 is a protein called Methionyl-tRNA synthetase.

Mol	Chain	Residues	Atoms						ZeroOcc	AltConf	Trace
			Total	As	C	N	O	S			
1	A	520	4154	1	2675	701	766	11	0	0	0
1	B	525	4193	1	2704	708	768	12	0	1	0

There are 22 discrepancies between the modelled and reference sequences:

Chain	Residue	Modelled	Actual	Comment	Reference
A	-4	GLY	-	expression tag	UNP Q38C91
A	-3	PRO	-	expression tag	UNP Q38C91
A	-2	GLY	-	expression tag	UNP Q38C91
A	-1	SER	-	expression tag	UNP Q38C91
A	0	MET	-	expression tag	UNP Q38C91
A	309	THR	ALA	conflict	UNP Q38C91
A	452	ALA	LYS	engineered mutation	UNP Q38C91
A	453	ARG	LYS	engineered mutation	UNP Q38C91
A	454	ALA	GLU	engineered mutation	UNP Q38C91
A	499	VAL	ALA	conflict	UNP Q38C91
A	503	ASN	SER	conflict	UNP Q38C91
B	-4	GLY	-	expression tag	UNP Q38C91
B	-3	PRO	-	expression tag	UNP Q38C91
B	-2	GLY	-	expression tag	UNP Q38C91
B	-1	SER	-	expression tag	UNP Q38C91
B	0	MET	-	expression tag	UNP Q38C91
B	309	THR	ALA	conflict	UNP Q38C91
B	452	ALA	LYS	engineered mutation	UNP Q38C91
B	453	ARG	LYS	engineered mutation	UNP Q38C91
B	454	ALA	GLU	engineered mutation	UNP Q38C91
B	499	VAL	ALA	conflict	UNP Q38C91
B	503	ASN	SER	conflict	UNP Q38C91

- Molecule 2 is GLYCEROL (three-letter code: GOL) (formula: C₃H₈O₃).



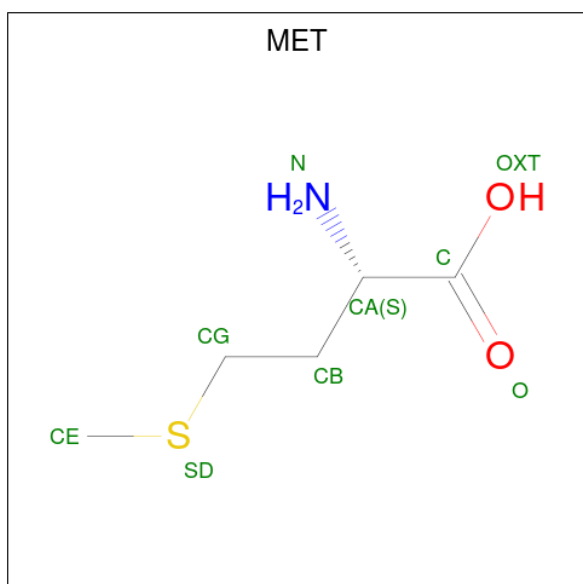
Mol	Chain	Residues	Atoms	ZeroOcc	AltConf
2	A	1	Total C O 6 3 3	0	0
2	A	1	Total C O 6 3 3	0	0
2	A	1	Total C O 6 3 3	0	0
2	A	1	Total C O 6 3 3	0	0
2	A	1	Total C O 6 3 3	0	0
2	A	1	Total C O 6 3 3	0	0
2	A	1	Total C O 6 3 3	0	0
2	A	1	Total C O 6 3 3	0	0
2	B	1	Total C O 6 3 3	0	0
2	B	1	Total C O 6 3 3	0	0
2	B	1	Total C O 6 3 3	0	0

- Molecule 3 is DIMETHYL SULFOXIDE (three-letter code: DMS) (formula: C₂H₆OS).



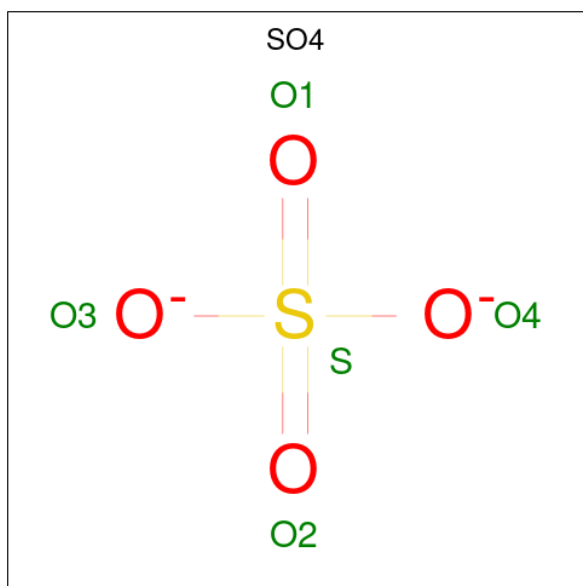
Mol	Chain	Residues	Atoms				ZeroOcc	AltConf
3	A	1	Total	C	O	S	0	0
			4	2	1	1		
3	A	1	Total	C	O	S	0	0
			4	2	1	1		
3	A	1	Total	C	O	S	0	0
			4	2	1	1		
3	A	1	Total	C	O	S	0	0
			4	2	1	1		
3	B	1	Total	C	O	S	0	0
			4	2	1	1		

- Molecule 4 is METHIONINE (three-letter code: MET) (formula: C₅H₁₁NO₂S).



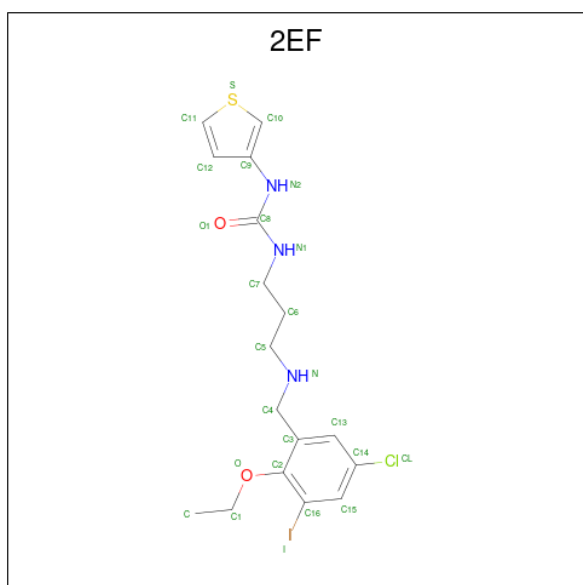
Mol	Chain	Residues	Atoms					ZeroOcc	AltConf
			Total	C	N	O	S		
4	A	1	9	5	1	2	1	0	0

- Molecule 5 is SULFATE ION (three-letter code: SO4) (formula: O₄S).



Mol	Chain	Residues	Atoms			ZeroOcc	AltConf
			Total	O	S		
5	B	1	5	4	1	0	0

- Molecule 6 is 1-{3-[(5-chloro-2-ethoxy-3-iodobenzyl)amino]propyl}-3-thiophen-3-ylurea (three-letter code: 2EF) (formula: C₁₇H₂₁ClIN₃O₂S).



Mol	Chain	Residues	Atoms							ZeroOcc	AltConf
			Total	C	Cl	I	N	O	S		
6	B	1	25	17	1	1	3	2	1	0	0

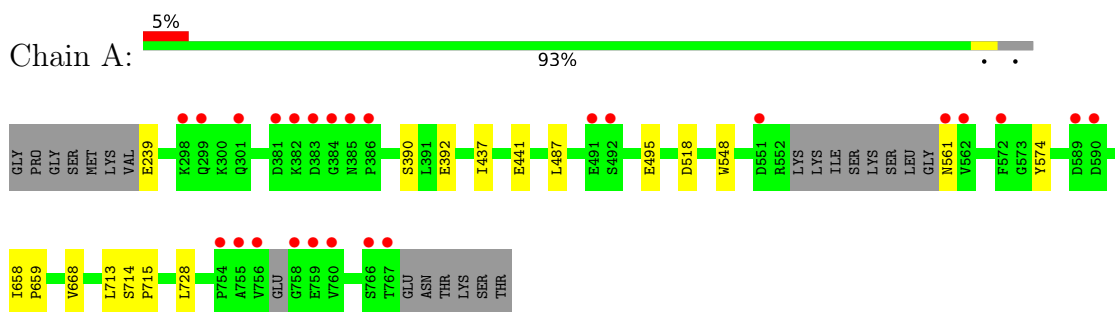
- Molecule 7 is water.

Mol	Chain	Residues	Atoms		ZeroOcc	AltConf
7	A	76	Total 76	O 76	0	0
7	B	101	Total 101	O 101	0	0

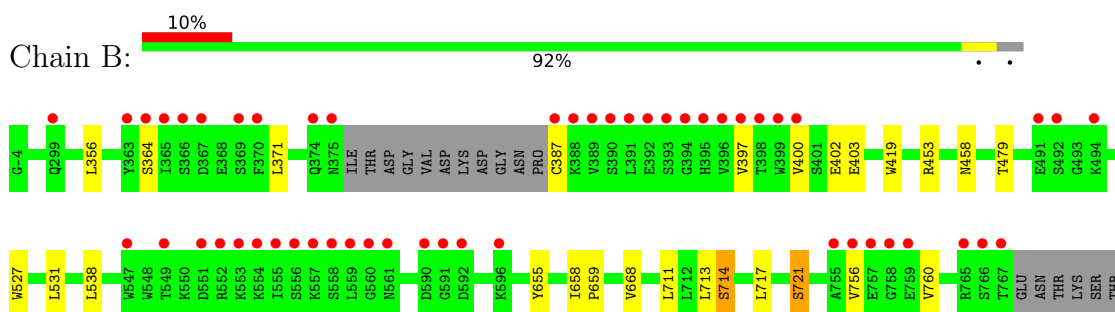
3 Residue-property plots [i](#)

These plots are drawn for all protein, RNA, DNA and oligosaccharide chains in the entry. The first graphic for a chain summarises the proportions of the various outlier classes displayed in the second graphic. The second graphic shows the sequence view annotated by issues in geometry and electron density. Residues are color-coded according to the number of geometric quality criteria for which they contain at least one outlier: green = 0, yellow = 1, orange = 2 and red = 3 or more. A red dot above a residue indicates a poor fit to the electron density ($RSRZ > 2$). Stretches of 2 or more consecutive residues without any outlier are shown as a green connector. Residues present in the sample, but not in the model, are shown in grey.

- Molecule 1: Methionyl-tRNA synthetase



- Molecule 1: Methionyl-tRNA synthetase



4 Data and refinement statistics

Property	Value	Source
Space group	P 21 21 21	Depositor
Cell constants a, b, c, α , β , γ	87.07Å 105.86Å 207.28Å 90.00° 90.00° 90.00°	Depositor
Resolution (Å)	30.00 – 2.75 33.62 – 2.75	Depositor EDS
% Data completeness (in resolution range)	97.0 (30.00-2.75) 97.1 (33.62-2.75)	Depositor EDS
R_{merge}	0.14	Depositor
R_{sym}	0.14	Depositor
$\langle I/\sigma(I) \rangle$ ¹	2.31 (at 2.76Å)	Xtrriage
Refinement program	REFMAC refmac_5.7.0032	Depositor
R, R_{free}	0.189 , 0.222 0.192 , 0.224	Depositor DCC
R_{free} test set	2505 reflections (5.08%)	wwPDB-VP
Wilson B-factor (Å ²)	42.1	Xtrriage
Anisotropy	0.464	Xtrriage
Bulk solvent k_{sol} (e/Å ³), B_{sol} (Å ²)	0.37 , 46.4	EDS
L-test for twinning ²	$\langle L \rangle = 0.50$, $\langle L^2 \rangle = 0.33$	Xtrriage
Estimated twinning fraction	No twinning to report.	Xtrriage
F_o, F_c correlation	0.94	EDS
Total number of atoms	8649	wwPDB-VP
Average B, all atoms (Å ²)	43.0	wwPDB-VP

Xtrriage's analysis on translational NCS is as follows: *The largest off-origin peak in the Patterson function is 3.58% of the height of the origin peak. No significant pseudotranslation is detected.*

¹Intensities estimated from amplitudes.

²Theoretical values of $\langle |L| \rangle$, $\langle L^2 \rangle$ for acentric reflections are 0.5, 0.333 respectively for untwinned datasets, and 0.375, 0.2 for perfectly twinned datasets.

5 Model quality [i](#)

5.1 Standard geometry [i](#)

Bond lengths and bond angles in the following residue types are not validated in this section: DMS, SO4, CAS, 2EF, GOL

The Z score for a bond length (or angle) is the number of standard deviations the observed value is removed from the expected value. A bond length (or angle) with $|Z| > 5$ is considered an outlier worth inspection. RMSZ is the root-mean-square of all Z scores of the bond lengths (or angles).

Mol	Chain	Bond lengths		Bond angles	
		RMSZ	# Z >5	RMSZ	# Z >5
1	A	0.39	0/4252	0.57	0/5783
1	B	0.40	0/4296	0.57	0/5838
All	All	0.39	0/8548	0.57	0/11621

There are no bond length outliers.

There are no bond angle outliers.

There are no chirality outliers.

There are no planarity outliers.

5.2 Too-close contacts [i](#)

In the following table, the Non-H and H(model) columns list the number of non-hydrogen atoms and hydrogen atoms in the chain respectively. The H(added) column lists the number of hydrogen atoms added and optimized by MolProbity. The Clashes column lists the number of clashes within the asymmetric unit, whereas Symm-Clashes lists symmetry-related clashes.

Mol	Chain	Non-H	H(model)	H(added)	Clashes	Symm-Clashes
1	A	4154	0	4074	8	0
1	B	4193	0	4141	15	0
2	A	48	0	64	1	0
2	B	18	0	24	0	0
3	A	16	0	24	1	0
3	B	4	0	6	0	0
4	A	9	0	8	0	0
5	B	5	0	0	0	0
6	B	25	0	21	1	0
7	A	76	0	0	1	0
7	B	101	0	0	0	0
All	All	8649	0	8362	25	0

The all-atom clashscore is defined as the number of clashes found per 1000 atoms (including hydrogen atoms). The all-atom clashscore for this structure is 1.

All (25) close contacts within the same asymmetric unit are listed below, sorted by their clash magnitude.

Atom-1	Atom-2	Interatomic distance (Å)	Clash overlap (Å)
1:B:717:LEU:O	1:B:721:SER:HB3	1.98	0.64
1:A:668:VAL:HG11	1:A:713:LEU:HG	1.85	0.59
1:A:574:TYR:N	2:A:806:GOL:H12	2.24	0.52
1:B:655:TYR:HA	1:B:658:ILE:HD12	1.90	0.52
1:B:711:LEU:O	1:B:714:SER:OG	2.26	0.51
1:B:668:VAL:HG11	1:B:713:LEU:HG	1.92	0.50
1:B:400:VAL:HG13	1:B:402:GLU:HG2	1.93	0.50
6:B:806:2EF:I	6:B:806:2EF:H2	2.84	0.47
1:B:356:LEU:HD11	1:B:403:GLU:HB3	1.96	0.47
3:A:810:DMS:H21	7:A:961:HOH:O	2.13	0.47
1:B:527:TRP:CE2	1:B:531:LEU:HD11	2.50	0.47
1:A:487:LEU:HD22	1:A:495:GLU:HG3	1.97	0.46
1:A:714:SER:N	1:A:715:PRO:CD	2.79	0.46
1:A:518:ASP:HB3	1:A:548:TRP:CE3	2.51	0.44
1:A:437:ILE:O	1:A:441:GLU:HG2	2.17	0.44
1:B:419:TRP:CE2	1:B:538:LEU:HD23	2.53	0.44
1:B:453:ARG:NH1	1:B:458:ASN:OD1	2.42	0.44
1:A:390:SER:OG	1:A:392:GLU:HB2	2.18	0.43
1:A:658:ILE:N	1:A:659:PRO:HA	2.34	0.42
1:B:479:THR:HG22	1:B:479:THR:O	2.19	0.42
1:B:658:ILE:N	1:B:659:PRO:HA	2.35	0.42
1:B:756:VAL:O	1:B:756:VAL:HG13	2.19	0.41
1:B:364:SER:HA	1:B:397:VAL:HG12	2.03	0.41
1:B:364:SER:CA	1:B:397:VAL:HG12	2.50	0.40
1:B:371:LEU:HD12	1:B:397:VAL:HG11	2.03	0.40

There are no symmetry-related clashes.

5.3 Torsion angles [\(i\)](#)

5.3.1 Protein backbone [\(i\)](#)

In the following table, the Percentiles column shows the percent Ramachandran outliers of the chain as a percentile score with respect to all X-ray entries followed by that with respect to entries of similar resolution.

The Analysed column shows the number of residues for which the backbone conformation was

analysed, and the total number of residues.

Mol	Chain	Analysed	Favoured	Allowed	Outliers	Percentiles	
1	A	513/542 (95%)	498 (97%)	15 (3%)	0	100	100
1	B	521/542 (96%)	499 (96%)	21 (4%)	1 (0%)	47	69
All	All	1034/1084 (95%)	997 (96%)	36 (4%)	1 (0%)	51	75

All (1) Ramachandran outliers are listed below:

Mol	Chain	Res	Type
1	B	760	VAL

5.3.2 Protein sidechains [i](#)

In the following table, the Percentiles column shows the percent sidechain outliers of the chain as a percentile score with respect to all X-ray entries followed by that with respect to entries of similar resolution.

The Analysed column shows the number of residues for which the sidechain conformation was analysed, and the total number of residues.

Mol	Chain	Analysed	Rotameric	Outliers	Percentiles	
1	A	444/468 (95%)	441 (99%)	3 (1%)	84	89
1	B	449/468 (96%)	446 (99%)	3 (1%)	84	89
All	All	893/936 (95%)	887 (99%)	6 (1%)	84	89

All (6) residues with a non-rotameric sidechain are listed below:

Mol	Chain	Res	Type
1	A	239	GLU
1	A	561	ASN
1	A	728	LEU
1	B	387	CYS
1	B	714	SER
1	B	721	SER

Sometimes sidechains can be flipped to improve hydrogen bonding and reduce clashes. All (1) such sidechains are listed below:

Mol	Chain	Res	Type
1	B	643	GLN

5.3.3 RNA [i](#)

There are no RNA molecules in this entry.

5.4 Non-standard residues in protein, DNA, RNA chains [i](#)

2 non-standard protein/DNA/RNA residues are modelled in this entry.

In the following table, the Counts columns list the number of bonds (or angles) for which Mogul statistics could be retrieved, the number of bonds (or angles) that are observed in the model and the number of bonds (or angles) that are defined in the Chemical Component Dictionary. The Link column lists molecule types, if any, to which the group is linked. The Z score for a bond length (or angle) is the number of standard deviations the observed value is removed from the expected value. A bond length (or angle) with $|Z| > 2$ is considered an outlier worth inspection. RMSZ is the root-mean-square of all Z scores of the bond lengths (or angles).

Mol	Type	Chain	Res	Link	Bond lengths			Bond angles		
					Counts	RMSZ	$\# Z > 2$	Counts	RMSZ	$\# Z > 2$
1	CAS	B	470	1	5,8,9	1.05	0	1,9,11	0.72	0
1	CAS	A	470	1	5,8,9	0.98	0	1,9,11	0.36	0

In the following table, the Chirals column lists the number of chiral outliers, the number of chiral centers analysed, the number of these observed in the model and the number defined in the Chemical Component Dictionary. Similar counts are reported in the Torsion and Rings columns. '-' means no outliers of that kind were identified.

Mol	Type	Chain	Res	Link	Chirals	Torsions	Rings
1	CAS	B	470	1	-	0/0/7/9	-
1	CAS	A	470	1	-	0/0/7/9	-

There are no bond length outliers.

There are no bond angle outliers.

There are no chirality outliers.

There are no torsion outliers.

There are no ring outliers.

No monomer is involved in short contacts.

5.5 Carbohydrates [i](#)

There are no monosaccharides in this entry.

5.6 Ligand geometry

19 ligands are modelled in this entry.

In the following table, the Counts columns list the number of bonds (or angles) for which Mogul statistics could be retrieved, the number of bonds (or angles) that are observed in the model and the number of bonds (or angles) that are defined in the Chemical Component Dictionary. The Link column lists molecule types, if any, to which the group is linked. The Z score for a bond length (or angle) is the number of standard deviations the observed value is removed from the expected value. A bond length (or angle) with $|Z| > 2$ is considered an outlier worth inspection. RMSZ is the root-mean-square of all Z scores of the bond lengths (or angles).

Mol	Type	Chain	Res	Link	Bond lengths			Bond angles		
					Counts	RMSZ	# Z > 2	Counts	RMSZ	# Z > 2
3	DMS	B	804	-	3,3,3	0.53	0	3,3,3	0.67	0
2	GOL	B	801	-	5,5,5	0.30	0	5,5,5	0.12	0
2	GOL	B	802	-	5,5,5	0.26	0	5,5,5	0.65	0
3	DMS	A	809	-	3,3,3	0.53	0	3,3,3	0.54	0
2	GOL	A	803	-	5,5,5	0.30	0	5,5,5	0.18	0
6	2EF	B	806	-	25,26,26	0.98	1 (4%)	25,33,33	0.40	0
2	GOL	A	806	-	5,5,5	0.40	0	5,5,5	0.56	0
3	DMS	A	810	-	3,3,3	0.54	0	3,3,3	0.49	0
3	DMS	A	811	-	3,3,3	0.49	0	3,3,3	0.70	0
2	GOL	A	801	-	5,5,5	0.30	0	5,5,5	0.42	0
2	GOL	A	808	-	5,5,5	0.42	0	5,5,5	0.57	0
4	MET	A	813	-	7,8,8	0.79	1 (14%)	7,9,9	1.82	2 (28%)
2	GOL	A	807	-	5,5,5	0.55	0	5,5,5	0.48	0
5	SO4	B	805	-	4,4,4	0.40	0	6,6,6	0.24	0
2	GOL	B	803	-	5,5,5	0.26	0	5,5,5	0.31	0
2	GOL	A	804	-	5,5,5	0.22	0	5,5,5	0.60	0
2	GOL	A	802	-	5,5,5	0.38	0	5,5,5	0.24	0
3	DMS	A	812	-	3,3,3	0.49	0	3,3,3	0.63	0
2	GOL	A	805	-	5,5,5	0.41	0	5,5,5	0.29	0

In the following table, the Chirals column lists the number of chiral outliers, the number of chiral centers analysed, the number of these observed in the model and the number defined in the Chemical Component Dictionary. Similar counts are reported in the Torsion and Rings columns. '-' means no outliers of that kind were identified.

Mol	Type	Chain	Res	Link	Chirals	Torsions	Rings
4	MET	A	813	-	-	0/8/8/8	-
2	GOL	A	807	-	-	4/4/4/4	-
2	GOL	A	803	-	-	2/4/4/4	-
2	GOL	A	805	-	-	4/4/4/4	-

Continued on next page...

Continued from previous page...

Mol	Type	Chain	Res	Link	Chirals	Torsions	Rings
2	GOL	A	806	-	-	2/4/4/4	-
6	2EF	B	806	-	-	3/14/16/16	0/2/2/2
2	GOL	B	801	-	-	2/4/4/4	-
2	GOL	B	803	-	-	4/4/4/4	-
2	GOL	A	801	-	-	4/4/4/4	-
2	GOL	B	802	-	-	2/4/4/4	-
2	GOL	A	804	-	-	0/4/4/4	-
2	GOL	A	802	-	-	2/4/4/4	-
2	GOL	A	808	-	-	0/4/4/4	-

All (2) bond length outliers are listed below:

Mol	Chain	Res	Type	Atoms	Z	Observed(Å)	Ideal(Å)
6	B	806	2EF	C12-C9	4.60	1.43	1.39
4	A	813	MET	OXT-C	-2.05	1.23	1.30

All (2) bond angle outliers are listed below:

Mol	Chain	Res	Type	Atoms	Z	Observed(°)	Ideal(°)
4	A	813	MET	OXT-C-O	-3.35	116.49	124.09
4	A	813	MET	OXT-C-CA	3.09	123.92	113.38

There are no chirality outliers.

All (29) torsion outliers are listed below:

Mol	Chain	Res	Type	Atoms
2	A	801	GOL	O1-C1-C2-C3
2	A	802	GOL	O1-C1-C2-C3
2	A	805	GOL	O1-C1-C2-O2
2	A	805	GOL	O1-C1-C2-C3
2	A	806	GOL	O1-C1-C2-C3
2	A	807	GOL	O1-C1-C2-O2
2	A	807	GOL	O1-C1-C2-C3
2	A	807	GOL	C1-C2-C3-O3
2	B	801	GOL	C1-C2-C3-O3
2	B	801	GOL	O2-C2-C3-O3
2	B	802	GOL	O1-C1-C2-C3
2	B	803	GOL	O1-C1-C2-C3
2	B	803	GOL	C1-C2-C3-O3
6	B	806	2EF	C5-C6-C7-N1

Continued on next page...

Continued from previous page...

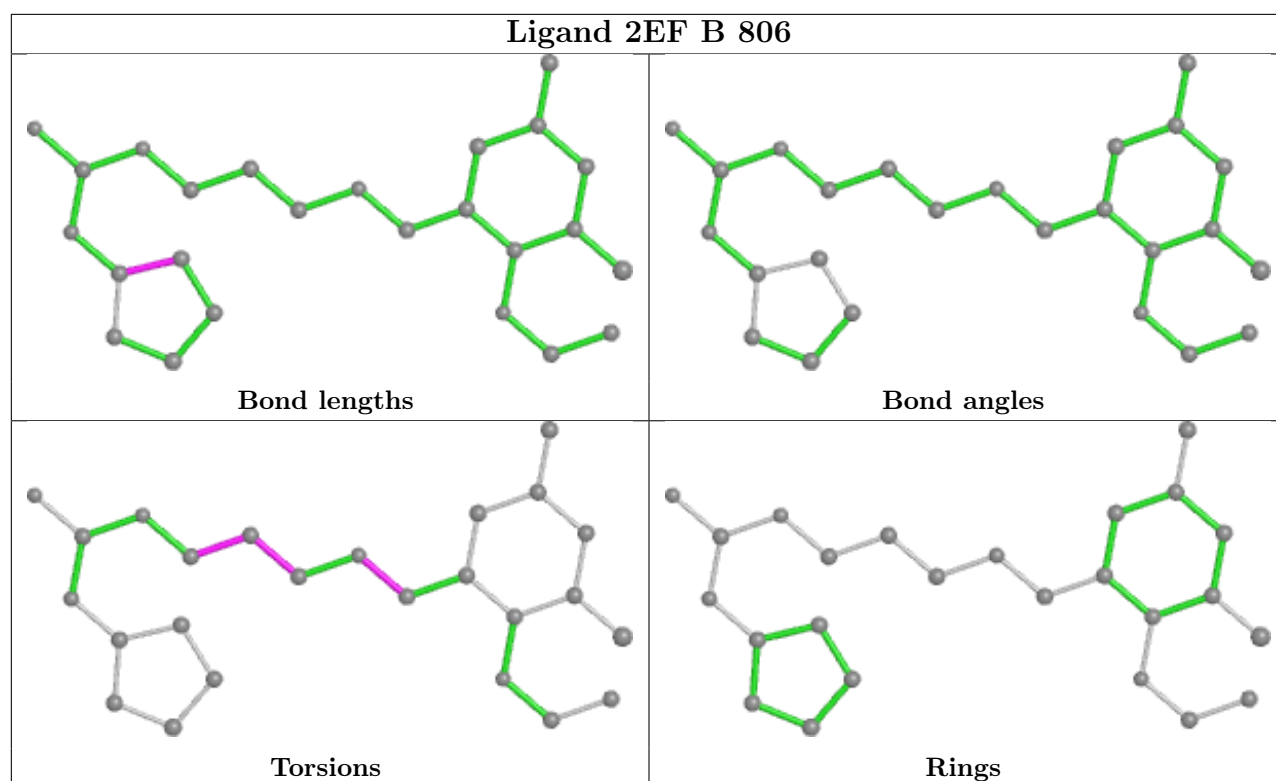
Mol	Chain	Res	Type	Atoms
2	A	805	GOL	O2-C2-C3-O3
2	B	802	GOL	O1-C1-C2-O2
6	B	806	2EF	N-C5-C6-C7
6	B	806	2EF	C3-C4-N-C5
2	A	805	GOL	C1-C2-C3-O3
2	A	801	GOL	O1-C1-C2-O2
2	A	802	GOL	O1-C1-C2-O2
2	A	807	GOL	O2-C2-C3-O3
2	B	803	GOL	O2-C2-C3-O3
2	A	801	GOL	O2-C2-C3-O3
2	B	803	GOL	O1-C1-C2-O2
2	A	803	GOL	O2-C2-C3-O3
2	A	803	GOL	C1-C2-C3-O3
2	A	806	GOL	O1-C1-C2-O2
2	A	801	GOL	C1-C2-C3-O3

There are no ring outliers.

3 monomers are involved in 3 short contacts:

Mol	Chain	Res	Type	Clashes	Symm-Clashes
6	B	806	2EF	1	0
2	A	806	GOL	1	0
3	A	810	DMS	1	0

The following is a two-dimensional graphical depiction of Mogul quality analysis of bond lengths, bond angles, torsion angles, and ring geometry for all instances of the Ligand of Interest. In addition, ligands with molecular weight > 250 and outliers as shown on the validation Tables will also be included. For torsion angles, if less than 5% of the Mogul distribution of torsion angles is within 10 degrees of the torsion angle in question, then that torsion angle is considered an outlier. Any bond that is central to one or more torsion angles identified as an outlier by Mogul will be highlighted in the graph. For rings, the root-mean-square deviation (RMSD) between the ring in question and similar rings identified by Mogul is calculated over all ring torsion angles. If the average RMSD is greater than 60 degrees and the minimal RMSD between the ring in question and any Mogul-identified rings is also greater than 60 degrees, then that ring is considered an outlier. The outliers are highlighted in purple. The color gray indicates Mogul did not find sufficient equivalents in the CSD to analyse the geometry.



5.7 Other polymers [i](#)

There are no such residues in this entry.

5.8 Polymer linkage issues [i](#)

There are no chain breaks in this entry.

6 Fit of model and data [i](#)

6.1 Protein, DNA and RNA chains [i](#)

In the following table, the column labelled ‘#RSRZ > 2’ contains the number (and percentage) of RSRZ outliers, followed by percent RSRZ outliers for the chain as percentile scores relative to all X-ray entries and entries of similar resolution. The OWAB column contains the minimum, median, 95th percentile and maximum values of the occupancy-weighted average B-factor per residue. The column labelled ‘Q < 0.9’ lists the number of (and percentage) of residues with an average occupancy less than 0.9.

Mol	Chain	Analysed	<RSRZ>	#RSRZ>2	OWAB(Å ²)	Q<0.9
1	A	519/542 (95%)	-0.17	25 (4%) 30 36	22, 36, 75, 111	0
1	B	524/542 (96%)	0.12	52 (9%) 7 8	25, 38, 97, 146	0
All	All	1043/1084 (96%)	-0.02	77 (7%) 14 17	22, 37, 91, 146	0

All (77) RSRZ outliers are listed below:

Mol	Chain	Res	Type	RSRZ
1	B	397	VAL	7.2
1	B	559	LEU	6.2
1	B	560	GLY	6.2
1	B	394	GLY	6.2
1	A	756	VAL	5.8
1	B	756	VAL	5.8
1	B	755	ALA	5.3
1	A	589	ASP	5.2
1	B	366	SER	5.1
1	A	383	ASP	5.1
1	B	767	THR	5.0
1	B	558	SER	5.0
1	B	393	SER	4.8
1	A	384	GLY	4.8
1	B	549	THR	4.7
1	B	757	GLU	4.6
1	B	389	VAL	4.5
1	B	387	CYS	4.5
1	B	396	VAL	4.4
1	B	365	ILE	4.2
1	A	755	ALA	4.1
1	B	395	HIS	4.0
1	B	491	GLU	4.0
1	B	390	SER	4.0

Continued on next page...

Continued from previous page...

Mol	Chain	Res	Type	RSRZ
1	B	758	GLY	4.0
1	B	492	SER	3.9
1	B	766	SER	3.9
1	B	391	LEU	3.8
1	B	552	ARG	3.7
1	A	491	GLU	3.7
1	B	364	SER	3.6
1	A	301	GLN	3.6
1	B	369	SER	3.6
1	B	392	GLU	3.6
1	A	562	VAL	3.6
1	B	398	THR	3.5
1	A	766	SER	3.3
1	B	557	LYS	3.3
1	B	375	ASN	3.3
1	B	553	LYS	3.2
1	B	554	LYS	3.2
1	B	367	ASP	3.1
1	B	551	ASP	3.1
1	A	385	ASN	3.1
1	A	767	THR	3.1
1	B	388	LYS	3.1
1	B	299	GLN	3.0
1	A	590	ASP	3.0
1	B	374	GLN	2.9
1	A	754	PRO	2.9
1	B	759	GLU	2.8
1	B	590	ASP	2.8
1	A	386	PRO	2.7
1	B	547	TRP	2.7
1	A	298	LYS	2.7
1	B	592	ASP	2.7
1	A	299	GLN	2.7
1	B	561	ASN	2.6
1	B	556	SER	2.6
1	B	494	LYS	2.5
1	B	765	ARG	2.5
1	B	363	TYR	2.5
1	A	758	GLY	2.4
1	A	572	PHE	2.4
1	A	551	ASP	2.4
1	A	759	GLU	2.4

Continued on next page...

Continued from previous page...

Mol	Chain	Res	Type	RSRZ
1	B	596	LYS	2.4
1	A	561	ASN	2.4
1	B	400	VAL	2.3
1	A	382	LYS	2.3
1	B	399	TRP	2.2
1	B	591	GLY	2.2
1	A	381	ASP	2.1
1	A	492	SER	2.1
1	B	555	ILE	2.1
1	B	370	PHE	2.0
1	A	760	VAL	2.0

6.2 Non-standard residues in protein, DNA, RNA chains [i](#)

In the following table, the Atoms column lists the number of modelled atoms in the group and the number defined in the chemical component dictionary. The B-factors column lists the minimum, median, 95th percentile and maximum values of B factors of atoms in the group. The column labelled 'Q< 0.9' lists the number of atoms with occupancy less than 0.9.

Mol	Type	Chain	Res	Atoms	RSCC	RSR	B-factors(Å ²)	Q<0.9
1	CAS	B	470	9/10	0.96	0.17	39,42,57,58	3
1	CAS	A	470	9/10	0.97	0.12	35,37,50,50	3

6.3 Carbohydrates [i](#)

There are no monosaccharides in this entry.

6.4 Ligands [i](#)

In the following table, the Atoms column lists the number of modelled atoms in the group and the number defined in the chemical component dictionary. The B-factors column lists the minimum, median, 95th percentile and maximum values of B factors of atoms in the group. The column labelled 'Q< 0.9' lists the number of atoms with occupancy less than 0.9.

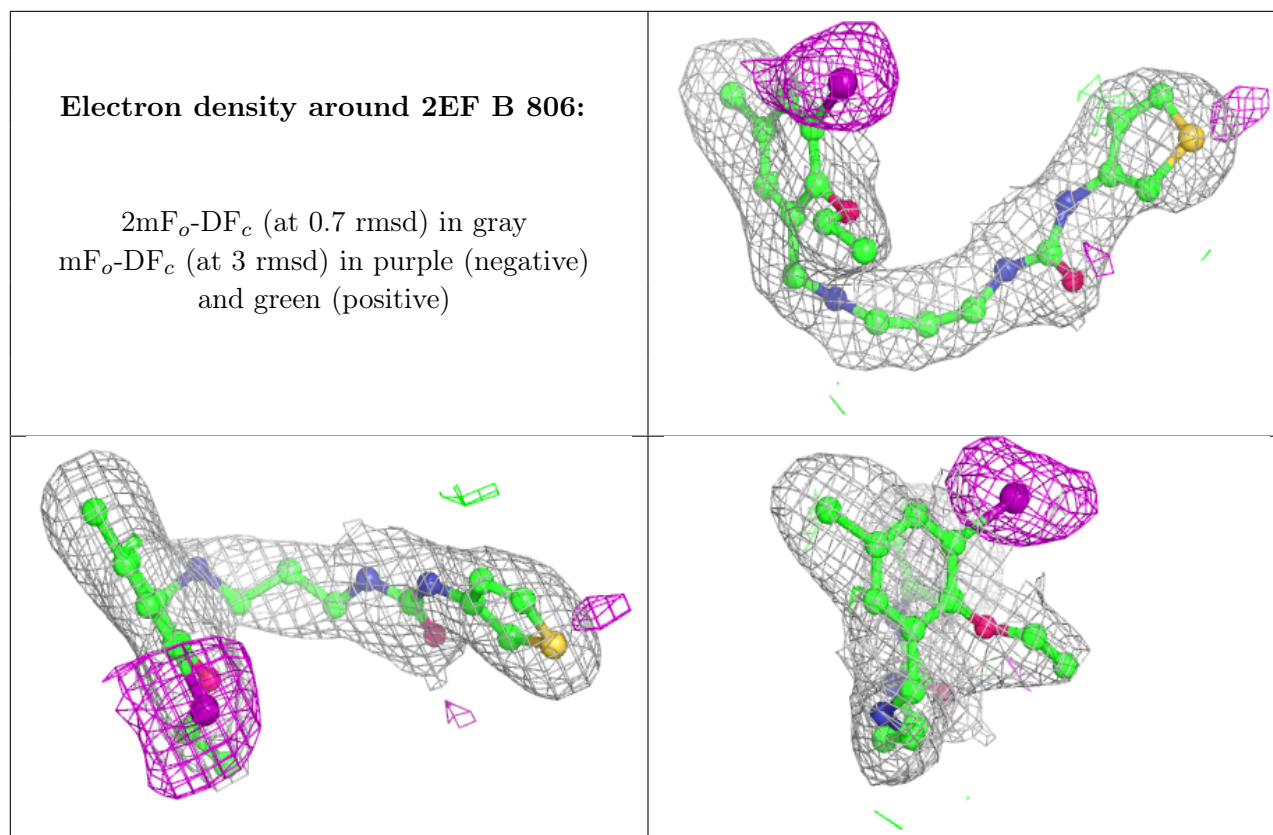
Mol	Type	Chain	Res	Atoms	RSCC	RSR	B-factors(Å ²)	Q<0.9
3	DMS	B	804	4/4	0.80	0.32	87,89,93,96	0
2	GOL	B	803	6/6	0.81	0.32	50,57,61,64	0
3	DMS	A	812	4/4	0.84	0.24	77,80,82,83	0
2	GOL	A	807	6/6	0.85	0.29	48,49,51,51	0
2	GOL	A	808	6/6	0.86	0.25	57,63,64,67	0

Continued on next page...

Continued from previous page...

Mol	Type	Chain	Res	Atoms	RSCC	RSR	B-factors(\AA^2)	Q<0.9
5	SO4	B	805	5/5	0.87	0.28	72,73,76,78	0
3	DMS	A	809	4/4	0.88	0.26	81,84,86,88	0
2	GOL	A	805	6/6	0.88	0.29	55,58,60,61	0
2	GOL	A	803	6/6	0.90	0.22	53,54,58,60	0
2	GOL	A	801	6/6	0.91	0.23	46,47,50,50	0
2	GOL	A	802	6/6	0.91	0.25	51,54,56,58	0
2	GOL	B	802	6/6	0.91	0.14	45,46,49,49	0
2	GOL	A	806	6/6	0.91	0.20	53,55,55,56	0
2	GOL	B	801	6/6	0.95	0.14	58,60,61,61	0
2	GOL	A	804	6/6	0.95	0.11	41,42,44,44	0
3	DMS	A	811	4/4	0.95	0.20	66,68,71,72	0
3	DMS	A	810	4/4	0.96	0.16	76,78,81,82	0
4	MET	A	813	9/9	0.98	0.21	26,26,27,30	0
6	2EF	B	806	25/25	0.98	0.12	33,38,41,50	0

The following is a graphical depiction of the model fit to experimental electron density of all instances of the Ligand of Interest. In addition, ligands with molecular weight > 250 and outliers as shown on the geometry validation Tables will also be included. Each fit is shown from different orientation to approximate a three-dimensional view.



6.5 Other polymers [i](#)

There are no such residues in this entry.