



Full wwPDB X-ray Structure Validation Report ⓘ

May 15, 2020 – 05:16 am BST

PDB ID : 5N7V
Title : TTK kinase domain in complex with MPI-0479605
Authors : Uitdehaag, J.; Willemsen-Seegers, N.; Zaman, G.J.R.
Deposited on : 2017-02-21
Resolution : 2.52 Å(reported)

This is a Full wwPDB X-ray Structure Validation Report for a publicly released PDB entry.

We welcome your comments at validation@mail.wwpdb.org

A user guide is available at

<https://www.wwpdb.org/validation/2017/XrayValidationReportHelp>

with specific help available everywhere you see the ⓘ symbol.

The following versions of software and data (see [references ⓘ](#)) were used in the production of this report:

MolProbity : 4.02b-467
Mogul : 1.8.5 (274361), CSD as541be (2020)
Xtriage (Phenix) : 1.13
EDS : 2.11
buster-report : 1.1.7 (2018)
Percentile statistics : 20191225.v01 (using entries in the PDB archive December 25th 2019)
Refmac : 5.8.0158
CCP4 : 7.0.044 (Gargrove)
Ideal geometry (proteins) : Engh & Huber (2001)
Ideal geometry (DNA, RNA) : Parkinson et al. (1996)
Validation Pipeline (wwPDB-VP) : 2.11

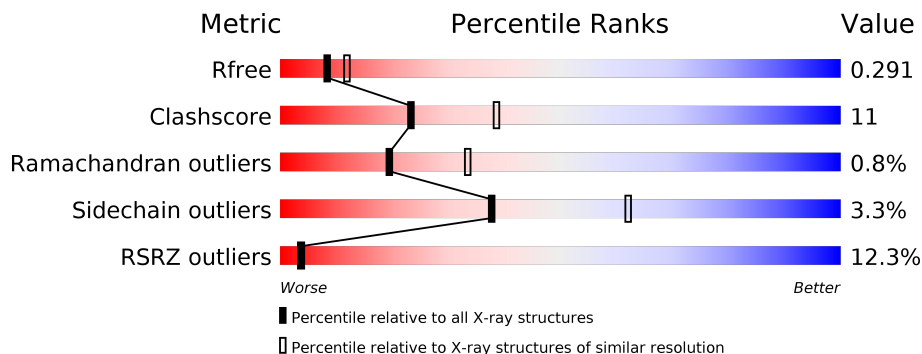
1 Overall quality at a glance

The following experimental techniques were used to determine the structure:

X-RAY DIFFRACTION

The reported resolution of this entry is 2.52 Å.

Percentile scores (ranging between 0-100) for global validation metrics of the entry are shown in the following graphic. The table shows the number of entries on which the scores are based.



Metric	Whole archive (#Entries)	Similar resolution (#Entries, resolution range(Å))
R_{free}	130704	5743 (2.54-2.50)
Clashscore	141614	6463 (2.54-2.50)
Ramachandran outliers	138981	6335 (2.54-2.50)
Sidechain outliers	138945	6337 (2.54-2.50)
RSRZ outliers	127900	5630 (2.54-2.50)

The table below summarises the geometric issues observed across the polymeric chains and their fit to the electron density. The red, orange, yellow and green segments on the lower bar indicate the fraction of residues that contain outliers for ≥ 3 , 2, 1 and 0 types of geometric quality criteria respectively. A grey segment represents the fraction of residues that are not modelled. The numeric value for each fraction is indicated below the corresponding segment, with a dot representing fractions $\leq 5\%$. The upper red bar (where present) indicates the fraction of residues that have poor fit to the electron density. The numeric value is given above the bar.

Mol	Chain	Length	Quality of chain
1	A	313	

The following table lists non-polymeric compounds, carbohydrate monomers and non-standard residues in protein, DNA, RNA chains that are outliers for geometric or electron-density-fit criteria:

Mol	Type	Chain	Res	Chirality	Geometry	Clashes	Electron density
1	TPO	A	686	-	-	X	-

2 Entry composition [i](#)

There are 4 unique types of molecules in this entry. The entry contains 2276 atoms, of which 0 are hydrogens and 0 are deuteriums.

In the tables below, the ZeroOcc column contains the number of atoms modelled with zero occupancy, the AltConf column contains the number of residues with at least one atom in alternate conformation and the Trace column contains the number of residues modelled with at most 2 atoms.

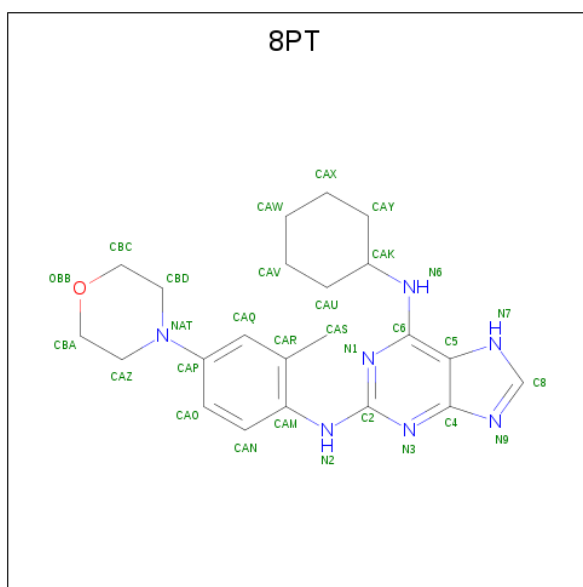
- Molecule 1 is a protein called Dual specificity protein kinase TTK.

Mol	Chain	Residues	Atoms						ZeroOcc	AltConf	Trace
			Total	C	N	O	P	S			
1	A	261	2135	1368	356	397	1	13	0	0	0

There are 24 discrepancies between the modelled and reference sequences:

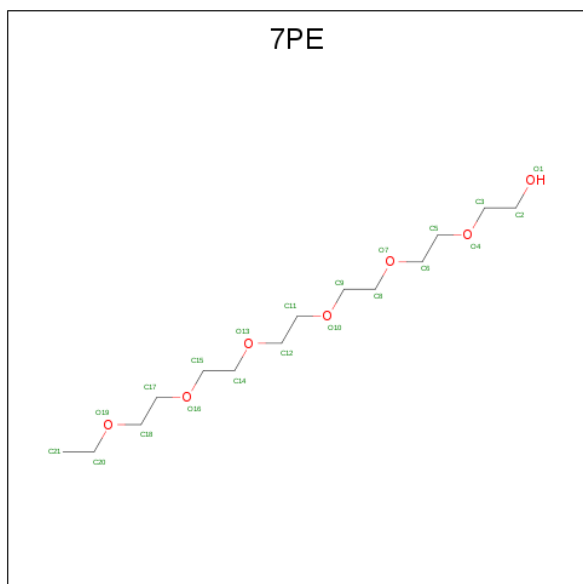
Chain	Residue	Modelled	Actual	Comment	Reference
A	496	MET	-	initiating methionine	UNP P33981
A	497	HIS	-	expression tag	UNP P33981
A	498	HIS	-	expression tag	UNP P33981
A	499	HIS	-	expression tag	UNP P33981
A	500	HIS	-	expression tag	UNP P33981
A	501	HIS	-	expression tag	UNP P33981
A	502	HIS	-	expression tag	UNP P33981
A	503	SER	-	expression tag	UNP P33981
A	504	SER	-	expression tag	UNP P33981
A	505	GLY	-	expression tag	UNP P33981
A	506	VAL	-	expression tag	UNP P33981
A	507	ASP	-	expression tag	UNP P33981
A	508	LEU	-	expression tag	UNP P33981
A	509	GLY	-	expression tag	UNP P33981
A	510	THR	-	expression tag	UNP P33981
A	511	GLU	-	expression tag	UNP P33981
A	512	ASN	-	expression tag	UNP P33981
A	513	LEU	-	expression tag	UNP P33981
A	514	TYR	-	expression tag	UNP P33981
A	515	PHE	-	expression tag	UNP P33981
A	516	GLN	-	expression tag	UNP P33981
A	517	SER	-	expression tag	UNP P33981
A	518	MET	-	expression tag	UNP P33981
A	797	LEU	PRO	conflict	UNP P33981

- Molecule 2 is {N}6-cyclohexyl- {N}2-(2-methyl-4-morpholin-4-yl-phenyl)-7 {H}-purine-2,6-diamine (three-letter code: 8PT) (formula: C₂₂H₂₉N₇O).



Mol	Chain	Residues	Atoms				ZeroOcc	AltConf
			Total	C	N	O		
2	A	1	30	22	7	1	0	0

- Molecule 3 is 2-(2-(2-(2-(2-(2-ETHOXYETHOXY)ETHOXY)ETHOXY)ETHOXY)ETHOXY)ETHOXY)ETHANOL (three-letter code: 7PE) (formula: C₁₄H₃₀O₇).



Mol	Chain	Residues	Atoms			ZeroOcc	AltConf
			Total	C	O		
3	A	1	8	5	3	0	0
3	A	1	11	7	4	0	0

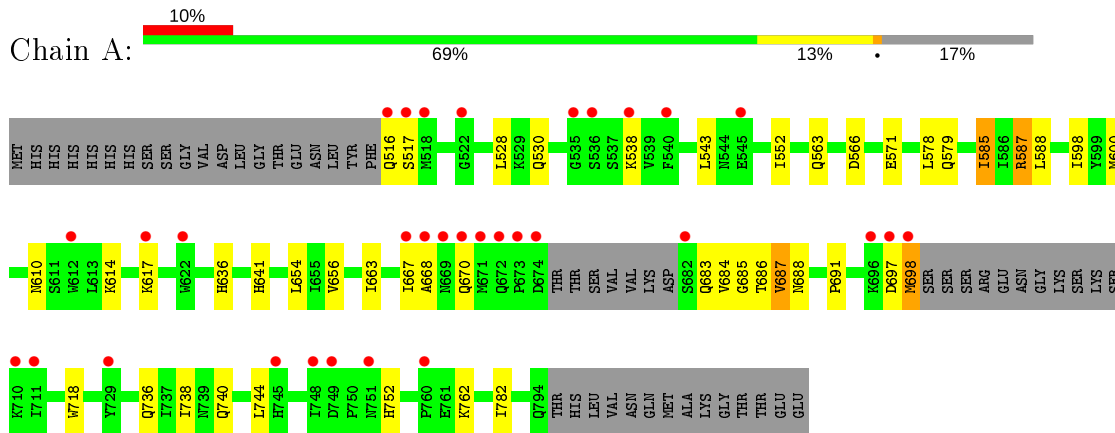
- Molecule 4 is water.

Mol	Chain	Residues	Atoms		ZeroOcc	AltConf
4	A	92	Total	O	0	0
			92	92		

3 Residue-property plots [i](#)

These plots are drawn for all protein, RNA and DNA chains in the entry. The first graphic for a chain summarises the proportions of the various outlier classes displayed in the second graphic. The second graphic shows the sequence view annotated by issues in geometry and electron density. Residues are color-coded according to the number of geometric quality criteria for which they contain at least one outlier: green = 0, yellow = 1, orange = 2 and red = 3 or more. A red dot above a residue indicates a poor fit to the electron density ($RSRZ > 2$). Stretches of 2 or more consecutive residues without any outlier are shown as a green connector. Residues present in the sample, but not in the model, are shown in grey.

- Molecule 1: Dual specificity protein kinase TTK



4 Data and refinement statistics

Property	Value	Source
Space group	I 2 2 2	Depositor
Cell constants a, b, c, α , β , γ	71.03Å 112.01Å 114.04Å 90.00° 90.00° 90.00°	Depositor
Resolution (Å)	41.33 – 2.52 41.33 – 2.52	Depositor EDS
% Data completeness (in resolution range)	99.8 (41.33-2.52) 99.9 (41.33-2.52)	Depositor EDS
R_{merge}	0.05	Depositor
R_{sym}	(Not available)	Depositor
$\langle I/\sigma(I) \rangle$ ¹	1.95 (at 2.51Å)	Xtriage
Refinement program	REFMAC 5.7.0029	Depositor
R, R_{free}	0.194 , 0.278 0.233 , 0.291	Depositor DCC
R_{free} test set	812 reflections (5.17%)	wwPDB-VP
Wilson B-factor (Å ²)	80.8	Xtriage
Anisotropy	0.167	Xtriage
Bulk solvent k_{sol} (e/Å ³), B_{sol} (Å ²)	0.34 , 73.7	EDS
L-test for twinning ²	$\langle L \rangle = 0.48$, $\langle L^2 \rangle = 0.31$	Xtriage
Estimated twinning fraction	0.020 for -h,-l,-k	Xtriage
F_o, F_c correlation	0.95	EDS
Total number of atoms	2276	wwPDB-VP
Average B, all atoms (Å ²)	89.0	wwPDB-VP

Xtriage's analysis on translational NCS is as follows: *The largest off-origin peak in the Patterson function is 7.68% of the height of the origin peak. No significant pseudotranslation is detected.*

¹Intensities estimated from amplitudes.

²Theoretical values of $\langle |L| \rangle$, $\langle L^2 \rangle$ for acentric reflections are 0.5, 0.333 respectively for untwinned datasets, and 0.375, 0.2 for perfectly twinned datasets.

5 Model quality [i](#)

5.1 Standard geometry [i](#)

Bond lengths and bond angles in the following residue types are not validated in this section: TPO, 7PE, 8PT

The Z score for a bond length (or angle) is the number of standard deviations the observed value is removed from the expected value. A bond length (or angle) with $|Z| > 5$ is considered an outlier worth inspection. RMSZ is the root-mean-square of all Z scores of the bond lengths (or angles).

Mol	Chain	Bond lengths		Bond angles	
		RMSZ	# Z >5	RMSZ	# Z >5
1	A	0.52	0/2169	0.70	0/2926

There are no bond length outliers.

There are no bond angle outliers.

There are no chirality outliers.

There are no planarity outliers.

5.2 Too-close contacts [i](#)

In the following table, the Non-H and H(model) columns list the number of non-hydrogen atoms and hydrogen atoms in the chain respectively. The H(added) column lists the number of hydrogen atoms added and optimized by MolProbity. The Clashes column lists the number of clashes within the asymmetric unit, whereas Symm-Clashes lists symmetry related clashes.

Mol	Chain	Non-H	H(model)	H(added)	Clashes	Symm-Clashes
1	A	2135	0	2145	47	0
2	A	30	0	0	1	0
3	A	19	0	20	2	0
4	A	92	0	0	7	0
All	All	2276	0	2165	49	0

The all-atom clashscore is defined as the number of clashes found per 1000 atoms (including hydrogen atoms). The all-atom clashscore for this structure is 11.

All (49) close contacts within the same asymmetric unit are listed below, sorted by their clash magnitude.

Atom-1	Atom-2	Interatomic distance (Å)	Clash overlap (Å)
1:A:686:TPO:O	1:A:687:VAL:HG12	1.20	1.29
1:A:686:TPO:HG22	1:A:687:VAL:H	1.11	1.14
1:A:686:TPO:O	1:A:687:VAL:CG1	2.09	1.00
1:A:516:GLN:HG2	1:A:517:SER:H	1.29	0.97
1:A:516:GLN:CG	1:A:517:SER:H	1.78	0.96
1:A:670:GLN:OE1	1:A:684:VAL:HG21	1.64	0.96
1:A:686:TPO:CG2	1:A:687:VAL:H	1.86	0.88
1:A:686:TPO:HG22	1:A:687:VAL:N	1.79	0.87
1:A:686:TPO:O3P	1:A:688:ASN:ND2	2.09	0.86
1:A:685:GLY:O	1:A:687:VAL:N	2.14	0.81
2:A:901:8PT:CAN	2:A:901:8PT:N1	2.47	0.75
1:A:516:GLN:CG	1:A:517:SER:N	2.50	0.73
1:A:687:VAL:HG21	1:A:744:LEU:HD21	1.81	0.61
1:A:686:TPO:O2P	1:A:686:TPO:HA	2.02	0.60
1:A:530:GLN:OE1	1:A:538:LYS:HD3	2.04	0.57
1:A:667:ILE:CG2	1:A:668:ALA:N	2.67	0.57
1:A:641:HIS:HE1	4:A:1060:HOH:O	1.88	0.56
1:A:598:ILE:HG21	1:A:600:MET:HE2	1.88	0.55
1:A:687:VAL:HG22	1:A:687:VAL:O	2.06	0.55
1:A:563:GLN:HG3	4:A:1065:HOH:O	2.07	0.54
1:A:654:LEU:HB2	1:A:663:ILE:HD11	1.89	0.53
3:A:903:7PE:C9	4:A:1048:HOH:O	2.58	0.52
1:A:579:GLN:O	1:A:587:ARG:NH1	2.43	0.52
1:A:578:LEU:HD21	1:A:641:HIS:CG	2.45	0.51
1:A:685:GLY:O	1:A:686:TPO:C	2.58	0.51
1:A:698:MET:N	1:A:698:MET:SD	2.86	0.48
1:A:684:VAL:O	1:A:686:TPO:N	2.47	0.48
1:A:686:TPO:CG2	1:A:687:VAL:N	2.50	0.48
1:A:670:GLN:HG3	1:A:684:VAL:HG11	1.95	0.48
1:A:585:ILE:O	1:A:587:ARG:NH2	2.47	0.47
1:A:571:GLU:CB	1:A:667:ILE:HD11	2.46	0.45
1:A:571:GLU:HB3	1:A:667:ILE:HD11	1.99	0.45
1:A:552:ILE:HA	1:A:600:MET:O	2.17	0.45
1:A:636:HIS:HB2	1:A:782:ILE:HG21	1.99	0.45
1:A:641:HIS:CE1	4:A:1060:HOH:O	2.66	0.44
1:A:686:TPO:C	1:A:687:VAL:HG12	2.25	0.44
1:A:663:ILE:HG22	3:A:903:7PE:C9	2.47	0.44
1:A:670:GLN:OE1	1:A:684:VAL:CG2	2.49	0.44
1:A:563:GLN:HG2	4:A:1089:HOH:O	2.17	0.44
1:A:667:ILE:HG22	1:A:668:ALA:N	2.33	0.43
1:A:762:LYS:HB2	4:A:1080:HOH:O	2.19	0.43
1:A:683:GLN:HA	1:A:683:GLN:OE1	2.19	0.42

Continued on next page...

Continued from previous page...

Atom-1	Atom-2	Interatomic distance (Å)	Clash overlap (Å)
1:A:528:LEU:HD21	1:A:543:LEU:HD12	2.01	0.42
1:A:610:ASN:O	1:A:614:LYS:HG2	2.19	0.42
1:A:684:VAL:C	1:A:686:TPO:N	2.72	0.42
1:A:752:HIS:HA	4:A:1043:HOH:O	2.19	0.41
1:A:687:VAL:HG11	1:A:740:GLN:OE1	2.21	0.41
1:A:579:GLN:NE2	1:A:588:LEU:O	2.51	0.40
1:A:691:PRO:HB3	1:A:718:TRP:HB3	2.04	0.40

There are no symmetry-related clashes.

5.3 Torsion angles [i](#)

5.3.1 Protein backbone [i](#)

In the following table, the Percentiles column shows the percent Ramachandran outliers of the chain as a percentile score with respect to all X-ray entries followed by that with respect to entries of similar resolution.

The Analysed column shows the number of residues for which the backbone conformation was analysed, and the total number of residues.

Mol	Chain	Analysed	Favoured	Allowed	Outliers	Percentiles
1	A	254/313 (81%)	235 (92%)	17 (7%)	2 (1%)	19 33

All (2) Ramachandran outliers are listed below:

Mol	Chain	Res	Type
1	A	687	VAL
1	A	656	VAL

5.3.2 Protein sidechains [i](#)

In the following table, the Percentiles column shows the percent sidechain outliers of the chain as a percentile score with respect to all X-ray entries followed by that with respect to entries of similar resolution.

The Analysed column shows the number of residues for which the sidechain conformation was analysed, and the total number of residues.

Mol	Chain	Analysed	Rotameric	Outliers	Percentiles
1	A	240/287 (84%)	232 (97%)	8 (3%)	38 62

All (8) residues with a non-rotameric sidechain are listed below:

Mol	Chain	Res	Type
1	A	566	ASP
1	A	585	ILE
1	A	587	ARG
1	A	617	LYS
1	A	697	ASP
1	A	698	MET
1	A	736	GLN
1	A	738	ILE

Some sidechains can be flipped to improve hydrogen bonding and reduce clashes. There are no such sidechains identified.

5.3.3 RNA [i](#)

There are no RNA molecules in this entry.

5.4 Non-standard residues in protein, DNA, RNA chains [i](#)

1 non-standard protein/DNA/RNA residue is modelled in this entry.

In the following table, the Counts columns list the number of bonds (or angles) for which Mogul statistics could be retrieved, the number of bonds (or angles) that are observed in the model and the number of bonds (or angles) that are defined in the Chemical Component Dictionary. The Link column lists molecule types, if any, to which the group is linked. The Z score for a bond length (or angle) is the number of standard deviations the observed value is removed from the expected value. A bond length (or angle) with $|Z| > 2$ is considered an outlier worth inspection. RMSZ is the root-mean-square of all Z scores of the bond lengths (or angles).

Mol	Type	Chain	Res	Link	Bond lengths			Bond angles		
					Counts	RMSZ	# Z > 2	Counts	RMSZ	# Z > 2
1	TPO	A	686	1	8,10,11	0.87	0	10,14,16	1.15	0

In the following table, the Chirals column lists the number of chiral outliers, the number of chiral centers analysed, the number of these observed in the model and the number defined in the Chemical Component Dictionary. Similar counts are reported in the Torsion and Rings columns. '-' means no outliers of that kind were identified.

Mol	Type	Chain	Res	Link	Chirals	Torsions	Rings
1	TPO	A	686	1	-	2/9/11/13	-

There are no bond length outliers.

There are no bond angle outliers.

There are no chirality outliers.

All (2) torsion outliers are listed below:

Mol	Chain	Res	Type	Atoms
1	A	686	TPO	N-CA-CB-OG1
1	A	686	TPO	CA-CB-OG1-P

There are no ring outliers.

1 monomer is involved in 12 short contacts:

Mol	Chain	Res	Type	Clashes	Symm-Clashes
1	A	686	TPO	12	0

5.5 Carbohydrates [i](#)

There are no carbohydrates in this entry.

5.6 Ligand geometry [i](#)

3 ligands are modelled in this entry.

In the following table, the Counts columns list the number of bonds (or angles) for which Mogul statistics could be retrieved, the number of bonds (or angles) that are observed in the model and the number of bonds (or angles) that are defined in the Chemical Component Dictionary. The Link column lists molecule types, if any, to which the group is linked. The Z score for a bond length (or angle) is the number of standard deviations the observed value is removed from the expected value. A bond length (or angle) with $|Z| > 2$ is considered an outlier worth inspection. RMSZ is the root-mean-square of all Z scores of the bond lengths (or angles).

Mol	Type	Chain	Res	Link	Bond lengths			Bond angles		
					Counts	RMSZ	# Z > 2	Counts	RMSZ	# Z > 2
2	8PT	A	901	-	30,34,34	1.51	2 (6%)	38,47,47	2.21	14 (36%)
3	7PE	A	903	-	10,10,20	0.52	0	9,9,19	0.35	0
3	7PE	A	902	-	7,7,20	0.59	0	6,6,19	0.33	0

In the following table, the Chirals column lists the number of chiral outliers, the number of chiral

centers analysed, the number of these observed in the model and the number defined in the Chemical Component Dictionary. Similar counts are reported in the Torsion and Rings columns. '-' means no outliers of that kind were identified.

Mol	Type	Chain	Res	Link	Chirals	Torsions	Rings
2	8PT	A	901	-	-	2/12/28/28	0/5/5/5
3	7PE	A	903	-	-	4/8/8/18	-
3	7PE	A	902	-	-	3/5/5/18	-

All (2) bond length outliers are listed below:

Mol	Chain	Res	Type	Atoms	Z	Observed(Å)	Ideal(Å)
2	A	901	8PT	CAS-CAR	-5.98	1.39	1.51
2	A	901	8PT	C5-N7	-2.08	1.32	1.39

All (14) bond angle outliers are listed below:

Mol	Chain	Res	Type	Atoms	Z	Observed(°)	Ideal(°)
2	A	901	8PT	N6-C6-N1	-4.58	109.19	118.90
2	A	901	8PT	C6-N6-CAK	4.28	132.31	124.16
2	A	901	8PT	CBD-NAT-CAZ	4.07	120.50	111.52
2	A	901	8PT	CAV-CAU-CAK	3.99	118.62	111.11
2	A	901	8PT	CAM-N2-C2	-3.81	118.10	129.60
2	A	901	8PT	N3-C2-N1	-3.71	120.36	126.23
2	A	901	8PT	CAW-CAX-CAY	-3.59	104.09	111.42
2	A	901	8PT	N2-C2-N3	3.00	127.10	116.92
2	A	901	8PT	CAQ-CAP-NAT	-2.79	118.34	121.33
2	A	901	8PT	C2-N1-C6	2.76	122.70	116.39
2	A	901	8PT	C2-N3-C4	2.43	118.04	115.28
2	A	901	8PT	CAW-CAV-CAU	2.33	116.16	111.42
2	A	901	8PT	C4-C5-N7	-2.27	107.03	109.40
2	A	901	8PT	CBA-CAZ-NAT	-2.15	106.05	110.02

There are no chirality outliers.

All (9) torsion outliers are listed below:

Mol	Chain	Res	Type	Atoms
3	A	903	7PE	O10-C11-C12-O13
3	A	902	7PE	O7-C8-C9-O10
3	A	903	7PE	O16-C17-C18-O19
2	A	901	8PT	N1-C6-N6-CAK
3	A	902	7PE	O4-C5-C6-O7
2	A	901	8PT	C5-C6-N6-CAK

Continued on next page...

Continued from previous page...

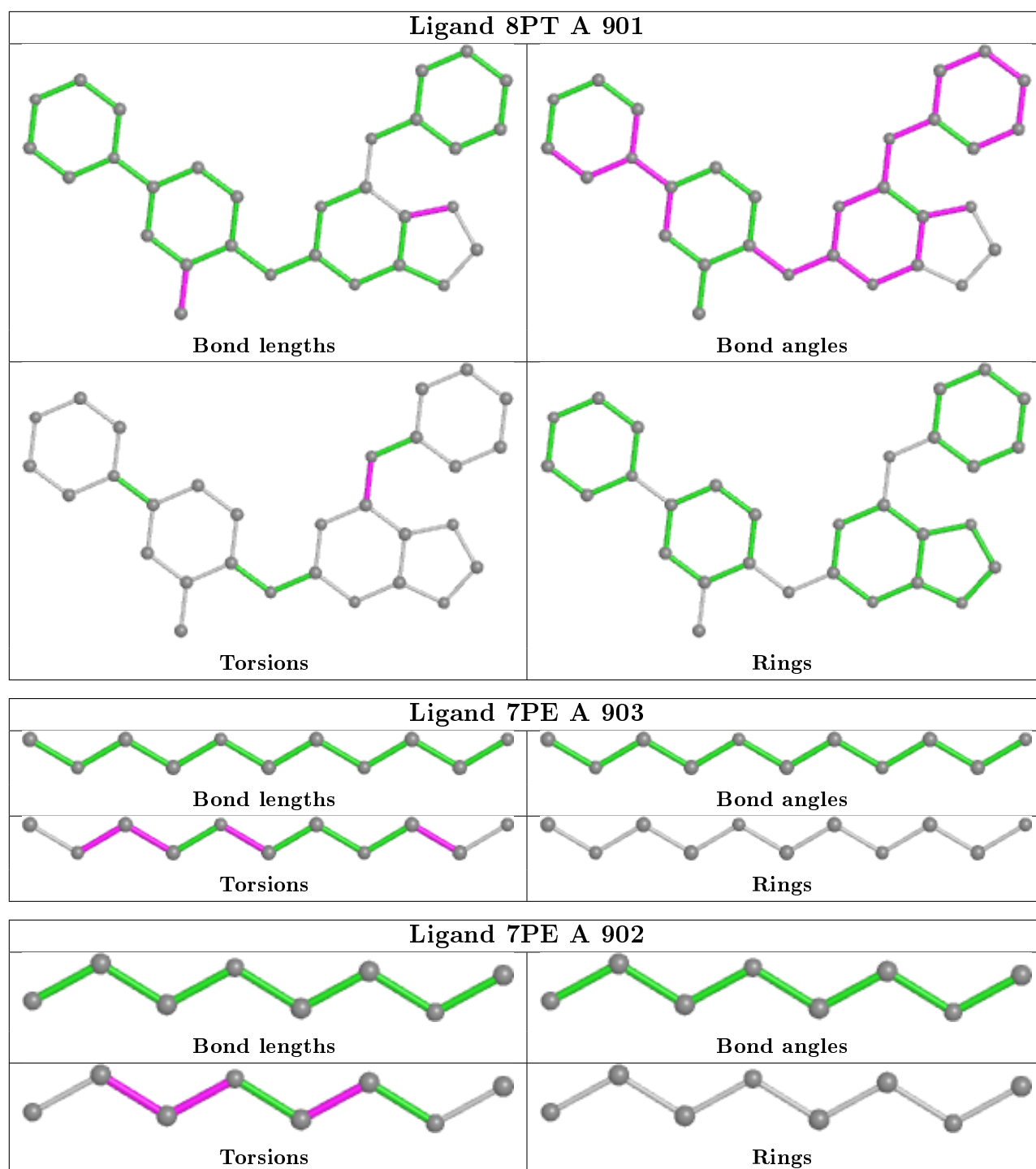
Mol	Chain	Res	Type	Atoms
3	A	903	7PE	C15-C14-O13-C12
3	A	903	7PE	C12-C11-O10-C9
3	A	902	7PE	C5-C6-O7-C8

There are no ring outliers.

2 monomers are involved in 3 short contacts:

Mol	Chain	Res	Type	Clashes	Symm-Clashes
2	A	901	8PT	1	0
3	A	903	7PE	2	0

The following is a two-dimensional graphical depiction of Mogul quality analysis of bond lengths, bond angles, torsion angles, and ring geometry for all instances of the Ligand of Interest. In addition, ligands with molecular weight > 250 and outliers as shown on the validation Tables will also be included. For torsion angles, if less than 5% of the Mogul distribution of torsion angles is within 10 degrees of the torsion angle in question, then that torsion angle is considered an outlier. Any bond that is central to one or more torsion angles identified as an outlier by Mogul will be highlighted in the graph. For rings, the root-mean-square deviation (RMSD) between the ring in question and similar rings identified by Mogul is calculated over all ring torsion angles. If the average RMSD is greater than 60 degrees and the minimal RMSD between the ring in question and any Mogul-identified rings is also greater than 60 degrees, then that ring is considered an outlier. The outliers are highlighted in purple. The color gray indicates Mogul did not find sufficient equivalents in the CSD to analyse the geometry.



5.7 Other polymers [\(i\)](#)

There are no such residues in this entry.

5.8 Polymer linkage issues [\(i\)](#)

There are no chain breaks in this entry.

6 Fit of model and data

6.1 Protein, DNA and RNA chains

In the following table, the column labelled ‘#RSRZ> 2’ contains the number (and percentage) of RSRZ outliers, followed by percent RSRZ outliers for the chain as percentile scores relative to all X-ray entries and entries of similar resolution. The OWAB column contains the minimum, median, 95th percentile and maximum values of the occupancy-weighted average B-factor per residue. The column labelled ‘Q< 0.9’ lists the number of (and percentage) of residues with an average occupancy less than 0.9.

Mol	Chain	Analysed	<RSRZ>	#RSRZ>2	OWAB(Å ²)	Q<0.9
1	A	260/313 (83%)	0.85	32 (12%) 4 4	55, 84, 137, 173	0

All (32) RSRZ outliers are listed below:

Mol	Chain	Res	Type	RSRZ
1	A	670	GLN	6.5
1	A	669	ASN	6.3
1	A	668	ALA	4.8
1	A	672	GLN	4.7
1	A	682	SER	4.4
1	A	535	GLY	4.1
1	A	517	SER	4.0
1	A	617	LYS	3.8
1	A	748	ILE	3.7
1	A	522	GLY	3.7
1	A	673	PRO	3.2
1	A	516	GLN	3.1
1	A	710	LYS	3.1
1	A	518	MET	3.0
1	A	538	LYS	3.0
1	A	698	MET	3.0
1	A	667	ILE	2.8
1	A	674	ASP	2.6
1	A	749	ASP	2.5
1	A	729	TYR	2.4
1	A	760	PRO	2.4
1	A	671	MET	2.4
1	A	622	TRP	2.4
1	A	696	LYS	2.3
1	A	751	ASN	2.3
1	A	697	ASP	2.3
1	A	612	TRP	2.3

Continued on next page...

Continued from previous page...

Mol	Chain	Res	Type	RSRZ
1	A	711	ILE	2.2
1	A	745	HIS	2.2
1	A	536	SER	2.1
1	A	545	GLU	2.1
1	A	540	PHE	2.0

6.2 Non-standard residues in protein, DNA, RNA chains [i](#)

In the following table, the Atoms column lists the number of modelled atoms in the group and the number defined in the chemical component dictionary. The B-factors column lists the minimum, median, 95th percentile and maximum values of B factors of atoms in the group. The column labelled 'Q< 0.9' lists the number of atoms with occupancy less than 0.9.

Mol	Type	Chain	Res	Atoms	RSCC	RSR	B-factors(Å ²)	Q<0.9
1	TPO	A	686	11/12	0.83	0.19	115,121,139,147	0

6.3 Carbohydrates [i](#)

There are no carbohydrates in this entry.

6.4 Ligands [i](#)

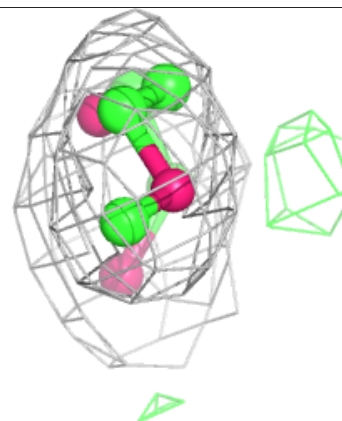
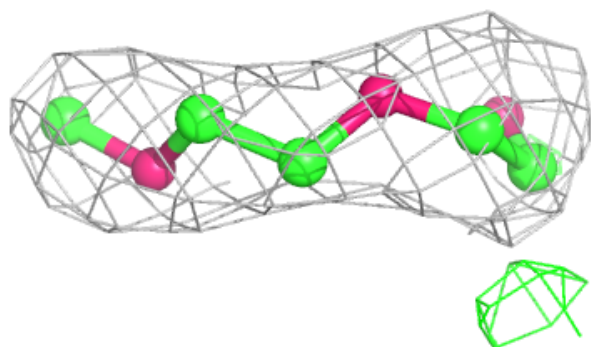
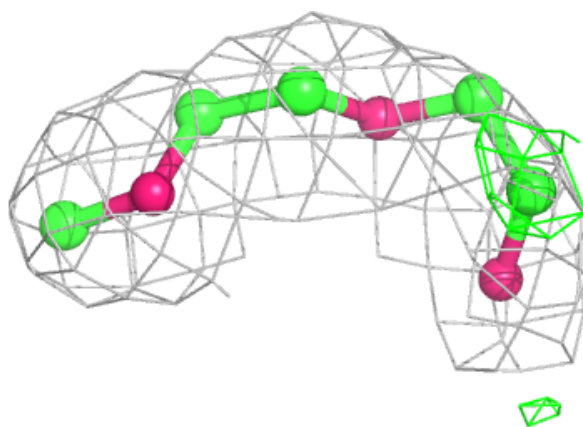
In the following table, the Atoms column lists the number of modelled atoms in the group and the number defined in the chemical component dictionary. The B-factors column lists the minimum, median, 95th percentile and maximum values of B factors of atoms in the group. The column labelled 'Q< 0.9' lists the number of atoms with occupancy less than 0.9.

Mol	Type	Chain	Res	Atoms	RSCC	RSR	B-factors(Å ²)	Q<0.9
3	7PE	A	902	8/21	0.84	0.17	80,96,102,102	0
3	7PE	A	903	11/21	0.92	0.34	90,98,109,109	0
2	8PT	A	901	30/30	0.95	0.21	61,71,91,93	0

The following is a graphical depiction of the model fit to experimental electron density of all instances of the Ligand of Interest. In addition, ligands with molecular weight > 250 and outliers as shown on the geometry validation Tables will also be included. Each fit is shown from different orientation to approximate a three-dimensional view.

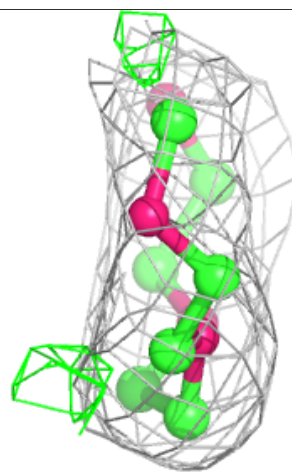
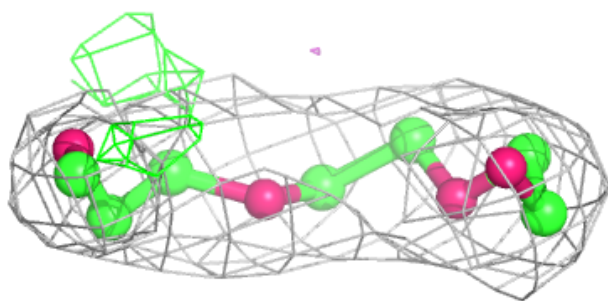
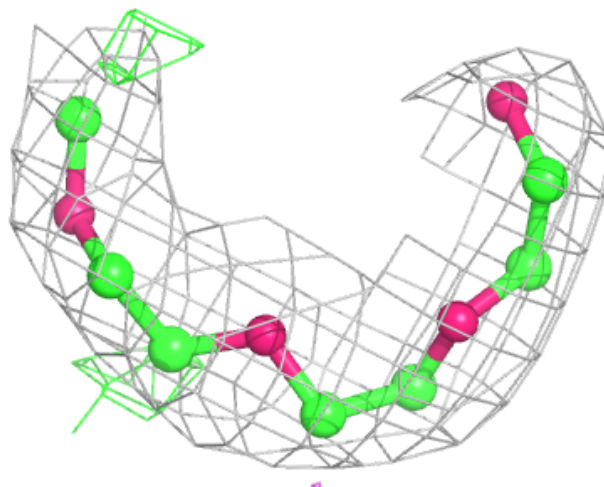
Electron density around 7PE A 902:

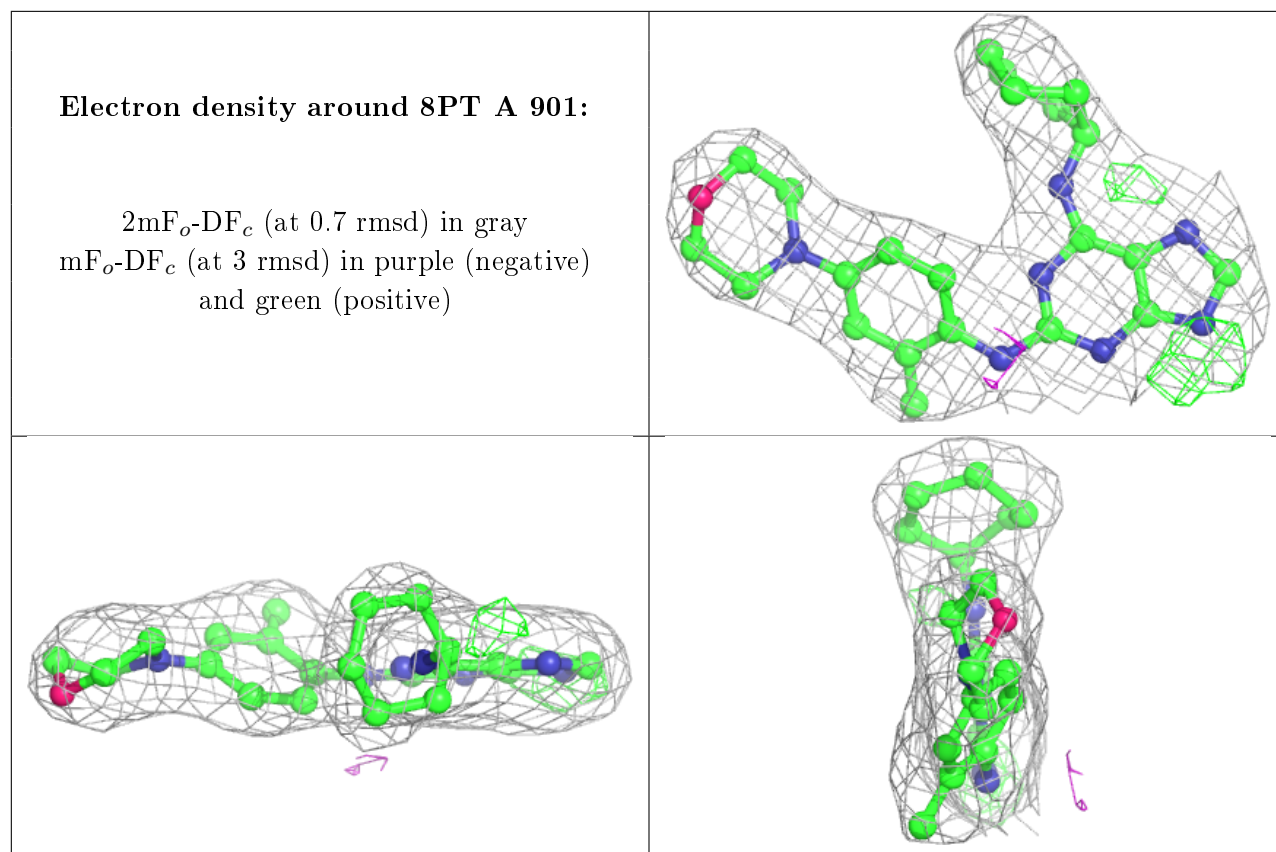
$2mF_o-DF_c$ (at 0.7 rmsd) in gray
 mF_o-DF_c (at 3 rmsd) in purple (negative)
and green (positive)



Electron density around 7PE A 903:

$2mF_o-DF_c$ (at 0.7 rmsd) in gray
 mF_o-DF_c (at 3 rmsd) in purple (negative)
and green (positive)





6.5 Other polymers [i](#)

There are no such residues in this entry.