



# Full wwPDB X-ray Structure Validation Report ⓘ

Jun 11, 2024 – 09:44 PM EDT

PDB ID : 6N9A  
Title : Crystal Structure of Thermotoga maritima threonylcarbamoyladenine biosynthesis complex TsaB2D2E2 bound to ATP and carboxy-AMP  
Authors : Swairjo, M.A.; Stec, B.  
Deposited on : 2018-12-01  
Resolution : 2.50 Å(reported)

This is a Full wwPDB X-ray Structure Validation Report for a publicly released PDB entry.

We welcome your comments at [validation@mail.wwpdb.org](mailto:validation@mail.wwpdb.org)

A user guide is available at

<https://www.wwpdb.org/validation/2017/XrayValidationReportHelp>

with specific help available everywhere you see the ⓘ symbol.

The types of validation reports are described at

<http://www.wwpdb.org/validation/2017/FAQs#types>.

---

The following versions of software and data (see [references ⓘ](#)) were used in the production of this report:

MolProbity : 4.02b-467  
Mogul : 1.8.5 (274361), CSD as541be (2020)  
Xtriage (Phenix) : 1.13  
EDS : 2.36.2  
buster-report : 1.1.7 (2018)  
Percentile statistics : 20191225.v01 (using entries in the PDB archive December 25th 2019)  
Refmac : 5.8.0158  
CCP4 : 7.0.044 (Gargrove)  
Ideal geometry (proteins) : Engh & Huber (2001)  
Ideal geometry (DNA, RNA) : Parkinson et al. (1996)  
Validation Pipeline (wwPDB-VP) : 2.36.2

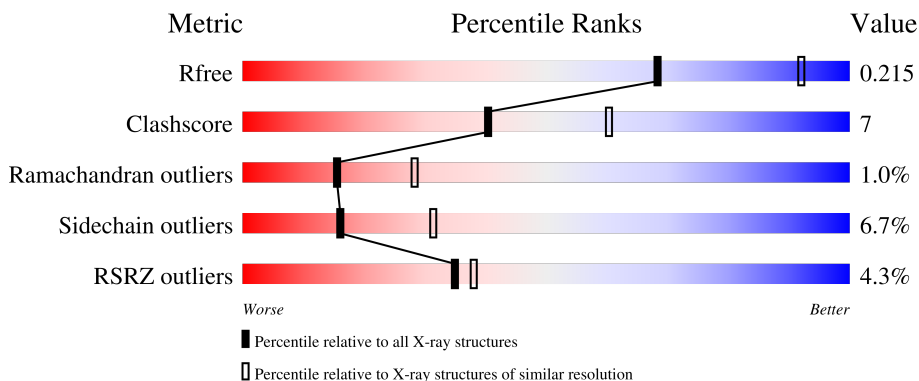
# 1 Overall quality at a glance

The following experimental techniques were used to determine the structure:

*X-RAY DIFFRACTION*


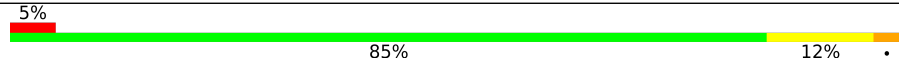
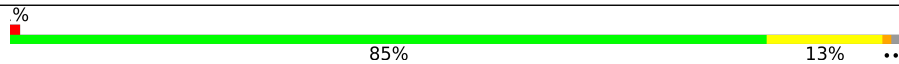
The reported resolution of this entry is 2.50 Å.

Percentile scores (ranging between 0-100) for global validation metrics of the entry are shown in the following graphic. The table shows the number of entries on which the scores are based.



Metric	Whole archive (#Entries)	Similar resolution (#Entries, resolution range(Å))
$R_{free}$	130704	4661 (2.50-2.50)
Clashscore	141614	5346 (2.50-2.50)
Ramachandran outliers	138981	5231 (2.50-2.50)
Sidechain outliers	138945	5233 (2.50-2.50)
RSRZ outliers	127900	4559 (2.50-2.50)

The table below summarises the geometric issues observed across the polymeric chains and their fit to the electron density. The red, orange, yellow and green segments of the lower bar indicate the fraction of residues that contain outliers for  $\geq 3$ , 2, 1 and 0 types of geometric quality criteria respectively. A grey segment represents the fraction of residues that are not modelled. The numeric value for each fraction is indicated below the corresponding segment, with a dot representing fractions  $\leq 5\%$ . The upper red bar (where present) indicates the fraction of residues that have poor fit to the electron density. The numeric value is given above the bar.

Mol	Chain	Length	Quality of chain
1	B	211	 6% 75% 21% •
2	D	330	 5% 85% 12% •
3	E	162	 % 85% 13% ••

## 2 Entry composition

There are 11 unique types of molecules in this entry. The entry contains 5755 atoms, of which 0 are hydrogens and 0 are deuteriums.

In the tables below, the ZeroOcc column contains the number of atoms modelled with zero occupancy, the AltConf column contains the number of residues with at least one atom in alternate conformation and the Trace column contains the number of residues modelled with at most 2 atoms.

- Molecule 1 is a protein called tRNA threonylcarbamoyladenosine biosynthesis protein TsaB.

Mol	Chain	Residues	Atoms					ZeroOcc	AltConf	Trace
			Total	C	N	O	S			
1	B	211	1650	1059	277	310	4	0	0	0

There are 6 discrepancies between the modelled and reference sequences:

Chain	Residue	Modelled	Actual	Comment	Reference
B	-4	GLY	-	expression tag	UNP Q9WZX7
B	-3	SER	-	expression tag	UNP Q9WZX7
B	-2	HIS	-	expression tag	UNP Q9WZX7
B	-1	MET	-	expression tag	UNP Q9WZX7
B	0	ALA	-	expression tag	UNP Q9WZX7
B	1	SER	-	expression tag	UNP Q9WZX7

- Molecule 2 is a protein called tRNA N6-adenosine threonylcarbamoyltransferase.

Mol	Chain	Residues	Atoms					ZeroOcc	AltConf	Trace
			Total	C	N	O	S			
2	D	330	2534	1625	431	468	10	0	0	0

There are 3 discrepancies between the modelled and reference sequences:

Chain	Residue	Modelled	Actual	Comment	Reference
D	-2	GLU	-	expression tag	UNP Q9WXZ2
D	-1	GLY	-	expression tag	UNP Q9WXZ2
D	0	ARG	-	expression tag	UNP Q9WXZ2

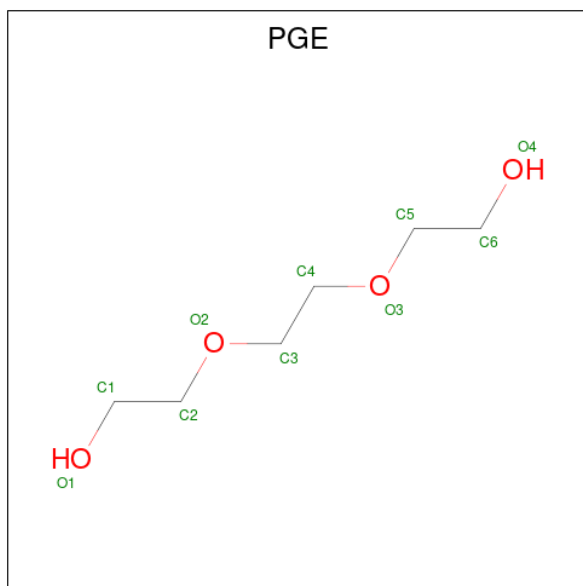
- Molecule 3 is a protein called tRNA threonylcarbamoyladenosine biosynthesis protein TsaE.

Mol	Chain	Residues	Atoms					ZeroOcc	AltConf	Trace
			Total	C	N	O	S			
3	E	161	1306	836	215	251	4	0	0	0

There are 2 discrepancies between the modelled and reference sequences:

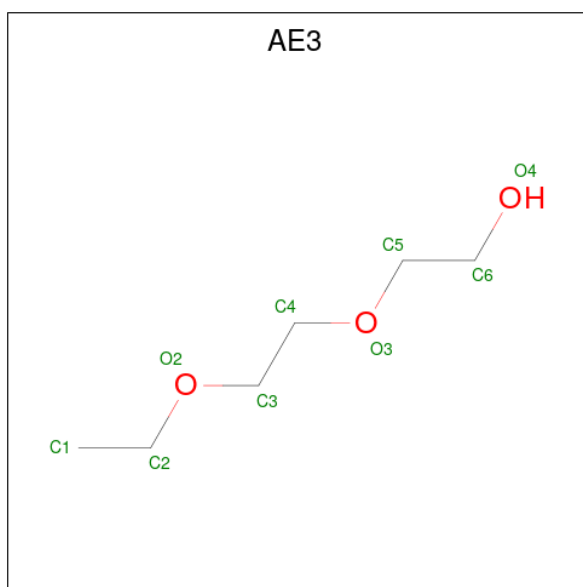
Chain	Residue	Modelled	Actual	Comment	Reference
E	0	ALA	-	expression tag	UNP Q9X1W7
E	1	SER	-	expression tag	UNP Q9X1W7

- Molecule 4 is TRIETHYLENE GLYCOL (three-letter code: PGE) (formula:  $C_6H_{14}O_4$ ).



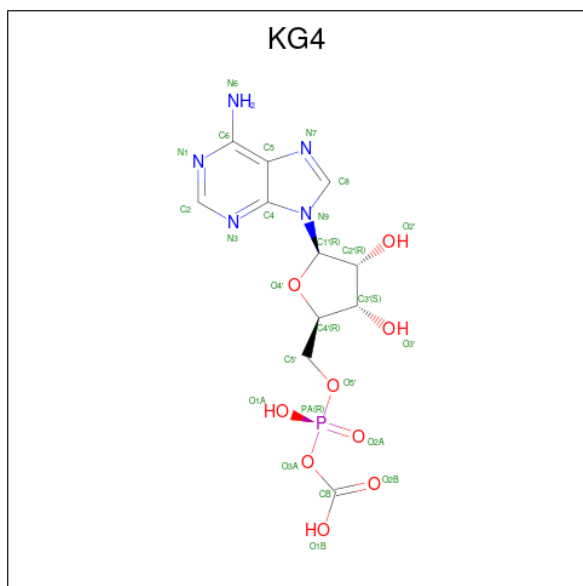
Mol	Chain	Residues	Atoms			ZeroOcc	AltConf
4	B	1	Total	C	O	0	0
			10	6	4		

- Molecule 5 is 2-(2-ETHOXYETHOXY)ETHANOL (three-letter code: AE3) (formula:  $C_6H_{14}O_3$ ).



Mol	Chain	Residues	Atoms			ZeroOcc	AltConf
5	B	1	Total	C	O	0	0
			9	6	3		

- Molecule 6 is 5'-O-[(R)-(carboxyxy)(hydroxy)phosphoryl]adenosine (three-letter code: KG4) (formula:  $C_{11}H_{14}N_5O_9P$ ).

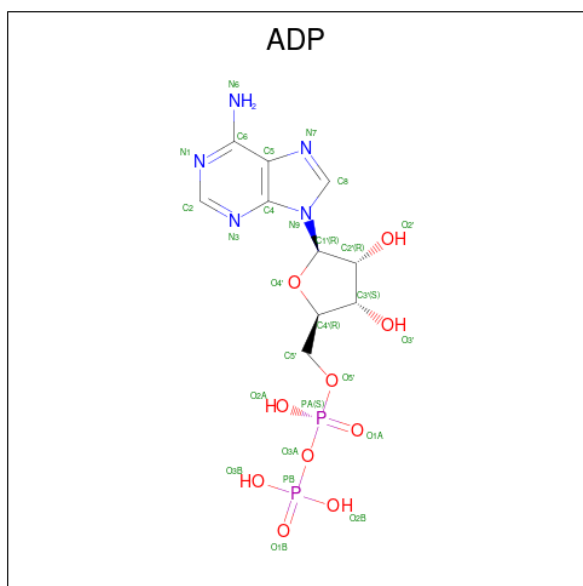


Mol	Chain	Residues	Atoms					ZeroOcc	AltConf
6	D	1	Total	C	N	O	P	0	0
			26	11	5	9	1		

- Molecule 7 is ZINC ION (three-letter code: ZN) (formula: Zn).

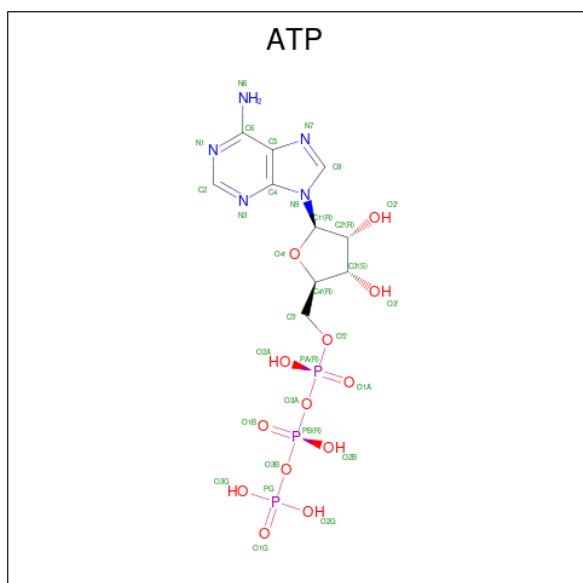
Mol	Chain	Residues	Atoms		ZeroOcc	AltConf
7	D	1	Total	Zn	0	0
			1	1		

- Molecule 8 is ADENOSINE-5'-DIPHOSPHATE (three-letter code: ADP) (formula:  $C_{10}H_{15}N_5O_{10}P_2$ ).



Mol	Chain	Residues	Atoms				ZeroOcc	AltConf	
8	D	1	Total	C	N	O	P	0	0
			27	10	5	10	2		

- Molecule 9 is ADENOSINE-5'-TRIPHOSPHATE (three-letter code: ATP) (formula:  $C_{10}H_{16}N_5O_{13}P_3$ ).



Mol	Chain	Residues	Atoms					ZeroOcc	AltConf
			Total	C	N	O	P		
9	E	1	31	10	5	13	3	0	0

- Molecule 10 is MAGNESIUM ION (three-letter code: MG) (formula: Mg).

Mol	Chain	Residues	Atoms		ZeroOcc	AltConf
			Total	Mg		
10	E	1	1	1	0	0

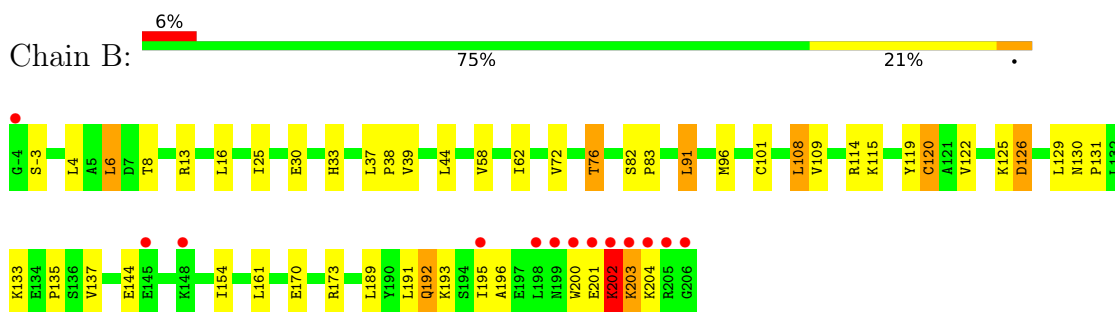
- Molecule 11 is water.

Mol	Chain	Residues	Atoms		ZeroOcc	AltConf
			Total	O		
11	B	41	41	41	0	0
11	D	81	81	81	0	0
11	E	38	38	38	0	0

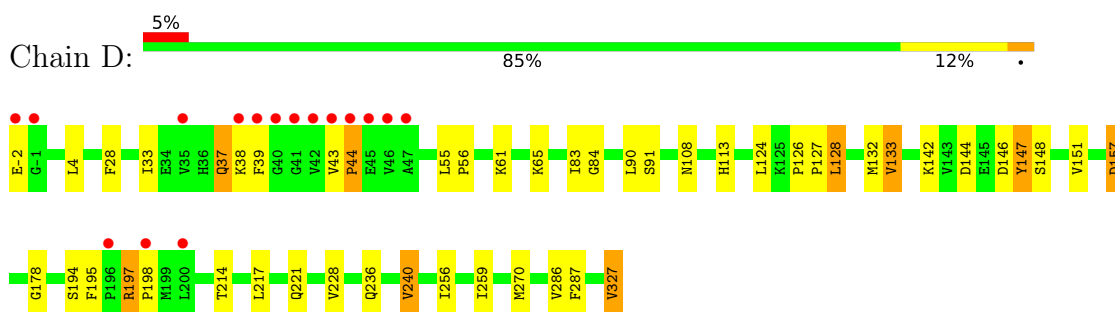
### 3 Residue-property plots [i](#)

These plots are drawn for all protein, RNA, DNA and oligosaccharide chains in the entry. The first graphic for a chain summarises the proportions of the various outlier classes displayed in the second graphic. The second graphic shows the sequence view annotated by issues in geometry and electron density. Residues are color-coded according to the number of geometric quality criteria for which they contain at least one outlier: green = 0, yellow = 1, orange = 2 and red = 3 or more. A red dot above a residue indicates a poor fit to the electron density ( $RSRZ > 2$ ). Stretches of 2 or more consecutive residues without any outlier are shown as a green connector. Residues present in the sample, but not in the model, are shown in grey.

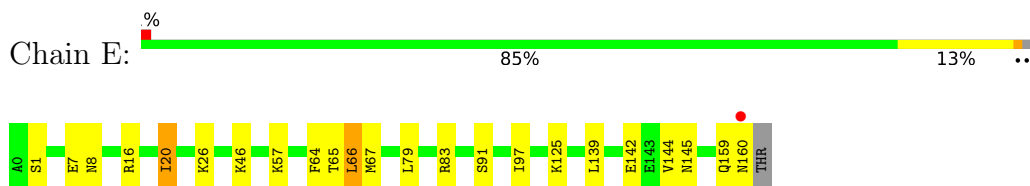
- Molecule 1: tRNA threonylcarbamoyladenosine biosynthesis protein TsaB



- Molecule 2: tRNA N6-adenosine threonylcarbamoyltransferase



- Molecule 3: tRNA threonylcarbamoyladenosine biosynthesis protein TsaE





## 4 Data and refinement statistics i

Property	Value	Source
Space group	P 31 2 1	Depositor
Cell constants a, b, c, $\alpha$ , $\beta$ , $\gamma$	124.05Å 124.05Å 119.03Å 90.00° 90.00° 120.00°	Depositor
Resolution (Å)	42.94 – 2.50 42.94 – 2.50	Depositor EDS
% Data completeness (in resolution range)	89.1 (42.94-2.50) 89.1 (42.94-2.50)	Depositor EDS
$R_{merge}$	0.12	Depositor
$R_{sym}$	(Not available)	Depositor
$\langle I/\sigma(I) \rangle$ <sup>1</sup>	1.30 (at 2.51Å)	Xtrriage
Refinement program	REFMAC 5.8.0222	Depositor
R, $R_{free}$	0.122 , 0.214 0.131 , 0.215	Depositor DCC
$R_{free}$ test set	1787 reflections (5.40%)	wwPDB-VP
Wilson B-factor (Å <sup>2</sup> )	58.1	Xtrriage
Anisotropy	0.423	Xtrriage
Bulk solvent $k_{sol}$ (e/Å <sup>3</sup> ), $B_{sol}$ (Å <sup>2</sup> )	0.30 , 46.2	EDS
L-test for twinning <sup>2</sup>	$\langle  L  \rangle = 0.49$ , $\langle L^2 \rangle = 0.32$	Xtrriage
Estimated twinning fraction	0.033 for -h,-k,l	Xtrriage
$F_o, F_c$ correlation	0.98	EDS
Total number of atoms	5755	wwPDB-VP
Average B, all atoms (Å <sup>2</sup> )	79.0	wwPDB-VP

Xtrriage's analysis on translational NCS is as follows: *The largest off-origin peak in the Patterson function is 4.34% of the height of the origin peak. No significant pseudotranslation is detected.*

<sup>1</sup>Intensities estimated from amplitudes.

<sup>2</sup>Theoretical values of  $\langle |L| \rangle$ ,  $\langle L^2 \rangle$  for acentric reflections are 0.5, 0.333 respectively for untwinned datasets, and 0.375, 0.2 for perfectly twinned datasets.

## 5 Model quality

### 5.1 Standard geometry

Bond lengths and bond angles in the following residue types are not validated in this section: AE3, PGE, ZN, ADP, MG, ATP, KG4

The Z score for a bond length (or angle) is the number of standard deviations the observed value is removed from the expected value. A bond length (or angle) with  $|Z| > 5$  is considered an outlier worth inspection. RMSZ is the root-mean-square of all Z scores of the bond lengths (or angles).

Mol	Chain	Bond lengths		Bond angles	
		RMSZ	# Z  >5	RMSZ	# Z  >5
1	B	0.28	0/1678	0.47	0/2265
2	D	0.28	0/2584	0.47	0/3498
3	E	0.27	0/1327	0.46	0/1789
All	All	0.27	0/5589	0.47	0/7552

There are no bond length outliers.

There are no bond angle outliers.

There are no chirality outliers.

There are no planarity outliers.

### 5.2 Too-close contacts

In the following table, the Non-H and H(model) columns list the number of non-hydrogen atoms and hydrogen atoms in the chain respectively. The H(added) column lists the number of hydrogen atoms added and optimized by MolProbity. The Clashes column lists the number of clashes within the asymmetric unit, whereas Symm-Clashes lists symmetry-related clashes.

Mol	Chain	Non-H	H(model)	H(added)	Clashes	Symm-Clashes
1	B	1650	0	1724	36	0
2	D	2534	0	2584	34	0
3	E	1306	0	1319	13	0
4	B	10	0	14	0	0
5	B	9	0	14	0	0
6	D	26	0	0	1	0
7	D	1	0	0	0	0
8	D	27	0	12	1	0
9	E	31	0	12	2	0
10	E	1	0	0	0	0

*Continued on next page...*

*Continued from previous page...*

Mol	Chain	Non-H	H(model)	H(added)	Clashes	Symm-Clashes
11	B	41	0	0	1	0
11	D	81	0	0	1	0
11	E	38	0	0	1	0
All	All	5755	0	5679	81	0

The all-atom clashscore is defined as the number of clashes found per 1000 atoms (including hydrogen atoms). The all-atom clashscore for this structure is 7.

All (81) close contacts within the same asymmetric unit are listed below, sorted by their clash magnitude.

Atom-1	Atom-2	Interatomic distance (Å)	Clash overlap (Å)
1:B:72:VAL:O	1:B:76:THR:HG23	1.64	0.97
2:D:33:ILE:HG22	2:D:38:LYS:HE2	1.59	0.84
2:D:133:VAL:HG13	2:D:133:VAL:O	1.93	0.69
2:D:33:ILE:CG2	2:D:38:LYS:HE2	2.22	0.69
1:B:6:LEU:CD2	1:B:6:LEU:C	2.62	0.68
1:B:6:LEU:HD22	1:B:6:LEU:O	1.97	0.64
2:D:236:GLN:O	2:D:240:VAL:HG13	1.98	0.62
2:D:128:LEU:C	2:D:128:LEU:HD12	2.20	0.62
1:B:76:THR:HG22	2:D:91:SER:HB3	1.82	0.61
2:D:146:ASP:O	2:D:147:TYR:HB2	2.01	0.60
2:D:151:VAL:HG23	2:D:327:VAL:HG13	1.82	0.60
1:B:196:ALA:HB1	11:E:332:HOH:O	2.02	0.60
3:E:64:PHE:HA	3:E:83:ARG:HE	1.67	0.59
2:D:37:GLN:HE21	2:D:37:GLN:HA	1.68	0.58
1:B:33:HIS:HD2	11:B:420:HOH:O	1.86	0.58
2:D:128:LEU:HD12	2:D:128:LEU:O	2.04	0.57
2:D:43:VAL:O	2:D:44:PRO:O	2.23	0.57
3:E:144:VAL:O	3:E:144:VAL:HG13	2.05	0.55
1:B:108:LEU:HD12	1:B:122:VAL:HG22	1.88	0.55
1:B:170:GLU:OE2	1:B:173:ARG:NH2	2.40	0.54
1:B:101:CYS:O	1:B:125:LYS:NZ	2.41	0.54
2:D:33:ILE:HG22	2:D:38:LYS:CE	2.33	0.54
3:E:159:GLN:O	3:E:160:ASN:C	2.47	0.53
2:D:178:GLY:HA3	6:D:401:KG4:C4	2.39	0.52
1:B:6:LEU:HA	1:B:13:ARG:O	2.10	0.52
2:D:37:GLN:HA	2:D:37:GLN:NE2	2.24	0.51
2:D:126:PRO:HA	2:D:127:PRO:C	2.30	0.51
2:D:128:LEU:C	2:D:128:LEU:CD1	2.79	0.51
2:D:113:HIS:HB2	2:D:132:MET:HE3	1.93	0.50
2:D:214:THR:HG21	9:E:201:ATP:H4'	1.94	0.50

*Continued on next page...*

*Continued from previous page...*

Atom-1	Atom-2	Interatomic distance (Å)	Clash overlap (Å)
11:D:523:HOH:O	3:E:46:LYS:HE3	2.10	0.50
1:B:6:LEU:C	1:B:6:LEU:HD22	2.29	0.50
1:B:62:ILE:HG13	1:B:91:LEU:O	2.11	0.50
1:B:6:LEU:C	1:B:6:LEU:HD23	2.31	0.49
1:B:6:LEU:CD2	1:B:6:LEU:O	2.61	0.49
2:D:127:PRO:HB2	2:D:256:ILE:HD12	1.95	0.49
2:D:108:ASN:OD1	2:D:108:ASN:C	2.51	0.49
1:B:96:MET:CE	1:B:170:GLU:HG2	2.43	0.49
1:B:82:SER:N	1:B:83:PRO:CD	2.76	0.49
2:D:55:LEU:HB3	2:D:56:PRO:HD3	1.95	0.49
2:D:259:ILE:O	2:D:286:VAL:HA	2.13	0.48
1:B:4:LEU:O	1:B:58:VAL:HA	2.14	0.48
1:B:25:ILE:HD11	1:B:44:LEU:HD13	1.95	0.47
1:B:126:ASP:OD1	1:B:126:ASP:N	2.48	0.46
3:E:65:THR:O	3:E:66:LEU:HB2	2.15	0.46
1:B:37:LEU:N	1:B:38:PRO:HD2	2.31	0.46
1:B:114:ARG:O	1:B:115:LYS:C	2.55	0.46
1:B:135:PRO:HB2	1:B:191:LEU:HD11	1.97	0.45
3:E:79:LEU:HD12	3:E:79:LEU:N	2.31	0.45
1:B:137:VAL:HG11	1:B:195:ILE:HG12	1.98	0.45
2:D:126:PRO:HB2	2:D:127:PRO:HA	1.98	0.45
3:E:16:ARG:O	3:E:20:ILE:HD12	2.16	0.45
1:B:192:GLN:HB3	3:E:91:SER:O	2.17	0.45
1:B:202:LYS:HB3	1:B:203:LYS:H	1.58	0.45
3:E:66:LEU:HD12	3:E:66:LEU:HA	1.79	0.44
1:B:82:SER:OG	1:B:83:PRO:HD3	2.18	0.44
2:D:38:LYS:HB3	2:D:38:LYS:NZ	2.31	0.44
1:B:202:LYS:HD3	1:B:202:LYS:HA	1.43	0.44
2:D:195:PHE:O	2:D:197:ARG:NH1	2.37	0.44
2:D:28:PHE:CE2	2:D:61:LYS:HB3	2.52	0.44
3:E:139:LEU:HD23	3:E:139:LEU:N	2.33	0.44
1:B:119:TYR:OH	1:B:192:GLN:HG3	2.18	0.43
2:D:-2:GLU:HG3	2:D:-2:GLU:O	2.18	0.43
2:D:55:LEU:N	2:D:56:PRO:CD	2.81	0.43
1:B:16:LEU:HD23	1:B:44:LEU:HG	2.00	0.43
1:B:200:TRP:CE3	1:B:201:GLU:HG3	2.53	0.43
3:E:142:GLU:O	3:E:145:ASN:HB2	2.19	0.43
3:E:67:MET:SD	3:E:97:ILE:HD13	2.59	0.42
1:B:72:VAL:O	1:B:76:THR:CG2	2.52	0.42
1:B:193:LYS:HA	3:E:91:SER:HB3	2.01	0.42
1:B:109:VAL:O	1:B:120:CYS:HA	2.20	0.41

*Continued on next page...*

Continued from previous page...

Atom-1	Atom-2	Interatomic distance (Å)	Clash overlap (Å)
2:D:83:ILE:HG23	2:D:84:GLY:N	2.35	0.41
1:B:8:THR:HG21	1:B:37:LEU:HD22	2.02	0.41
1:B:130:ASN:HA	1:B:131:PRO:HD3	1.91	0.41
2:D:4:LEU:C	2:D:4:LEU:HD23	2.41	0.41
2:D:214:THR:HG21	9:E:201:ATP:C4'	2.49	0.41
8:D:403:ADP:O1A	8:D:403:ADP:O1B	2.38	0.41
1:B:144:GLU:OE2	1:B:144:GLU:HA	2.20	0.40
2:D:217:LEU:O	2:D:221:GLN:HG2	2.21	0.40
2:D:113:HIS:HB2	2:D:132:MET:CE	2.51	0.40
2:D:124:LEU:HD13	2:D:287:PHE:CZ	2.57	0.40

There are no symmetry-related clashes.

## 5.3 Torsion angles [i](#)

### 5.3.1 Protein backbone [i](#)

In the following table, the Percentiles column shows the percent Ramachandran outliers of the chain as a percentile score with respect to all X-ray entries followed by that with respect to entries of similar resolution.

The Analysed column shows the number of residues for which the backbone conformation was analysed, and the total number of residues.

Mol	Chain	Analysed	Favoured	Allowed	Outliers	Percentiles	
1	B	209/211 (99%)	196 (94%)	11 (5%)	2 (1%)	15	28
2	D	328/330 (99%)	311 (95%)	12 (4%)	5 (2%)	10	18
3	E	159/162 (98%)	144 (91%)	15 (9%)	0	100	100
All	All	696/703 (99%)	651 (94%)	38 (6%)	7 (1%)	15	28

All (7) Ramachandran outliers are listed below:

Mol	Chain	Res	Type
2	D	44	PRO
1	B	192	GLN
2	D	157	ASP
1	B	202	LYS
2	D	133	VAL
2	D	198	PRO
2	D	147	TYR

### 5.3.2 Protein sidechains [i](#)

In the following table, the Percentiles column shows the percent sidechain outliers of the chain as a percentile score with respect to all X-ray entries followed by that with respect to entries of similar resolution.

The Analysed column shows the number of residues for which the sidechain conformation was analysed, and the total number of residues.

Mol	Chain	Analysed	Rotameric	Outliers	Percentiles	
1	B	183/183 (100%)	166 (91%)	17 (9%)	9	17
2	D	271/271 (100%)	256 (94%)	15 (6%)	21	41
3	E	145/146 (99%)	137 (94%)	8 (6%)	21	41
All	All	599/600 (100%)	559 (93%)	40 (7%)	16	31

All (40) residues with a non-rotameric sidechain are listed below:

Mol	Chain	Res	Type
1	B	-3	SER
1	B	6	LEU
1	B	30	GLU
1	B	39	VAL
1	B	76	THR
1	B	91	LEU
1	B	108	LEU
1	B	120	CYS
1	B	126	ASP
1	B	129	LEU
1	B	133	LYS
1	B	154	ILE
1	B	161	LEU
1	B	189	LEU
1	B	202	LYS
1	B	203	LYS
1	B	204	LYS
2	D	37	GLN
2	D	39	PHE
2	D	65	LYS
2	D	90	LEU
2	D	128	LEU
2	D	142	LYS
2	D	144	ASP
2	D	148	SER
2	D	157	ASP

*Continued on next page...*

*Continued from previous page...*

Mol	Chain	Res	Type
2	D	194	SER
2	D	197	ARG
2	D	228	VAL
2	D	240	VAL
2	D	270	MET
2	D	327	VAL
3	E	1	SER
3	E	7	GLU
3	E	8	ASN
3	E	20	ILE
3	E	26	LYS
3	E	57	LYS
3	E	66	LEU
3	E	125	LYS

Sometimes sidechains can be flipped to improve hydrogen bonding and reduce clashes. All (2) such sidechains are listed below:

Mol	Chain	Res	Type
2	D	37	GLN
2	D	221	GLN

### 5.3.3 RNA [i](#)

There are no RNA molecules in this entry.

## 5.4 Non-standard residues in protein, DNA, RNA chains [i](#)

There are no non-standard protein/DNA/RNA residues in this entry.

## 5.5 Carbohydrates [i](#)

There are no monosaccharides in this entry.

## 5.6 Ligand geometry [i](#)

Of 7 ligands modelled in this entry, 2 are monoatomic - leaving 5 for Mogul analysis.

In the following table, the Counts columns list the number of bonds (or angles) for which Mogul statistics could be retrieved, the number of bonds (or angles) that are observed in the model and

the number of bonds (or angles) that are defined in the Chemical Component Dictionary. The Link column lists molecule types, if any, to which the group is linked. The Z score for a bond length (or angle) is the number of standard deviations the observed value is removed from the expected value. A bond length (or angle) with  $|Z| > 2$  is considered an outlier worth inspection. RMSZ is the root-mean-square of all Z scores of the bond lengths (or angles).

Mol	Type	Chain	Res	Link	Bond lengths			Bond angles		
					Counts	RMSZ	# Z  > 2	Counts	RMSZ	# Z  > 2
4	PGE	B	301	-	9,9,9	0.48	0	8,8,8	0.16	0
8	ADP	D	403	-	24,29,29	0.99	1 (4%)	29,45,45	1.41	5 (17%)
6	KG4	D	401	-	25,28,28	1.46	1 (4%)	26,42,42	1.27	2 (7%)
5	AE3	B	302	-	8,8,8	0.59	0	7,7,7	0.18	0
9	ATP	E	201	10	26,33,33	0.94	1 (3%)	31,52,52	1.38	5 (16%)

In the following table, the Chirals column lists the number of chiral outliers, the number of chiral centers analysed, the number of these observed in the model and the number defined in the Chemical Component Dictionary. Similar counts are reported in the Torsion and Rings columns. '-' means no outliers of that kind were identified.

Mol	Type	Chain	Res	Link	Chirals	Torsions	Rings
4	PGE	B	301	-	-	4/7/7/7	-
8	ADP	D	403	-	-	3/12/32/32	0/3/3/3
6	KG4	D	401	-	-	3/9/31/31	0/3/3/3
5	AE3	B	302	-	-	3/6/6/6	-
9	ATP	E	201	10	-	1/18/38/38	0/3/3/3

All (3) bond length outliers are listed below:

Mol	Chain	Res	Type	Atoms	Z	Observed(Å)	Ideal(Å)
6	D	401	KG4	O3A-CB	6.08	1.46	1.36
8	D	403	ADP	C5-C4	2.53	1.47	1.40
9	E	201	ATP	C5-C4	2.42	1.47	1.40

All (12) bond angle outliers are listed below:

Mol	Chain	Res	Type	Atoms	Z	Observed(°)	Ideal(°)
6	D	401	KG4	N3-C2-N1	-4.23	122.07	128.68
8	D	403	ADP	N3-C2-N1	-3.77	122.78	128.68
9	E	201	ATP	N3-C2-N1	-3.46	123.26	128.68
9	E	201	ATP	PA-O3A-PB	-3.46	120.96	132.83
8	D	403	ADP	PA-O3A-PB	-3.06	122.31	132.83
8	D	403	ADP	C3'-C2'-C1'	2.84	105.26	100.98
9	E	201	ATP	PB-O3B-PG	-2.80	123.21	132.83

Continued on next page...



Continued from previous page...

Mol	Chain	Res	Type	Atoms	Z	Observed(°)	Ideal(°)
8	D	403	ADP	C4-C5-N7	-2.68	106.61	109.40
6	D	401	KG4	O3A-PA-O5'	2.57	110.43	102.92
8	D	403	ADP	C2-N1-C6	2.10	122.34	118.75
9	E	201	ATP	C2-N1-C6	2.01	122.20	118.75
9	E	201	ATP	C4-C5-N7	-2.01	107.30	109.40

There are no chirality outliers.

All (14) torsion outliers are listed below:

Mol	Chain	Res	Type	Atoms
6	D	401	KG4	C5'-O5'-PA-O2A
8	D	403	ADP	PA-O3A-PB-O3B
8	D	403	ADP	C5'-O5'-PA-O1A
8	D	403	ADP	C4'-C5'-O5'-PA
4	B	301	PGE	O1-C1-C2-O2
6	D	401	KG4	C5'-O5'-PA-O3A
4	B	301	PGE	O3-C5-C6-O4
5	B	302	AE3	O3-C5-C6-O4
4	B	301	PGE	C6-C5-O3-C4
6	D	401	KG4	C5'-O5'-PA-O1A
9	E	201	ATP	O4'-C4'-C5'-O5'
5	B	302	AE3	C4-C3-O2-C2
5	B	302	AE3	O2-C3-C4-O3
4	B	301	PGE	O2-C3-C4-O3

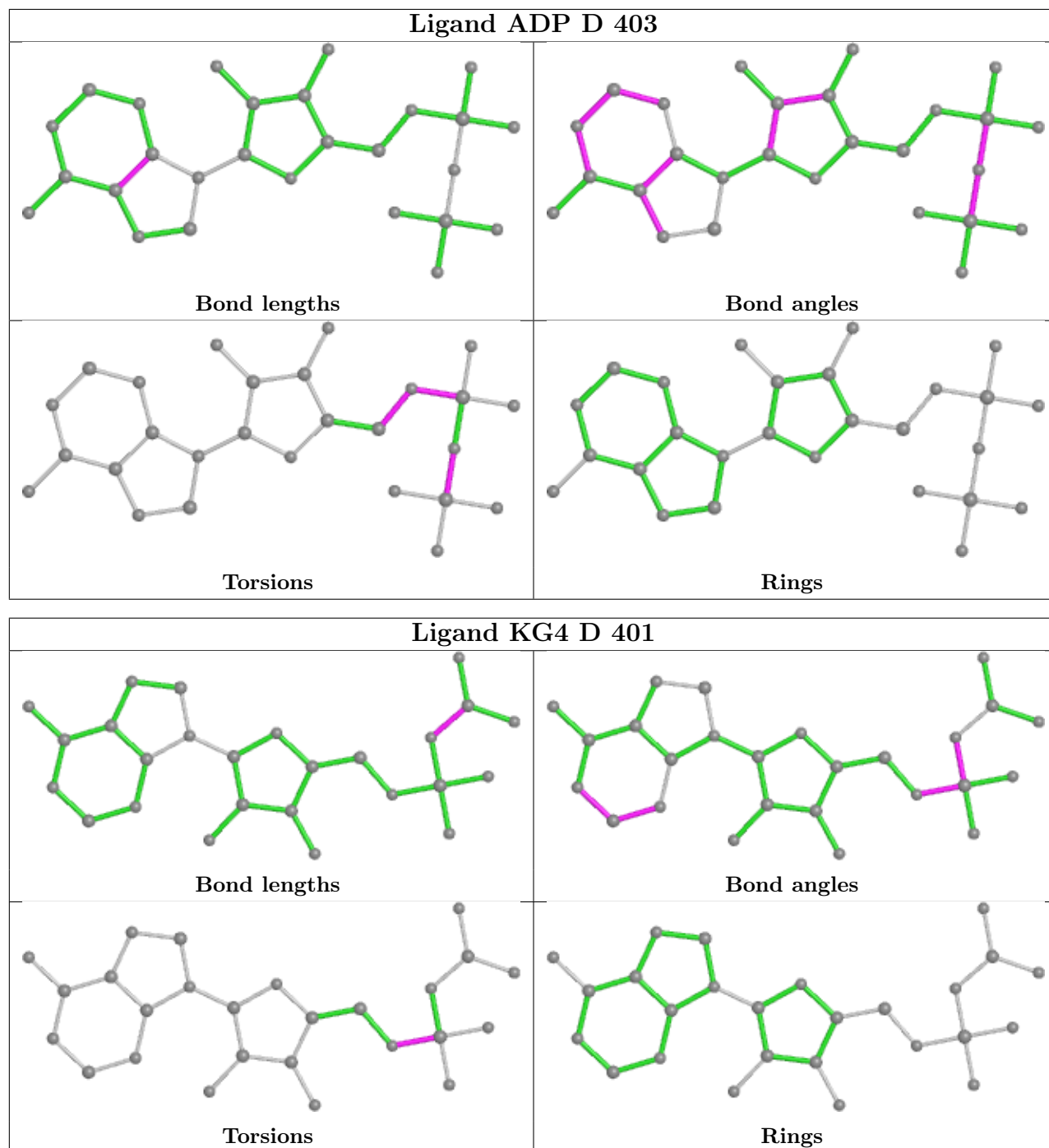
There are no ring outliers.

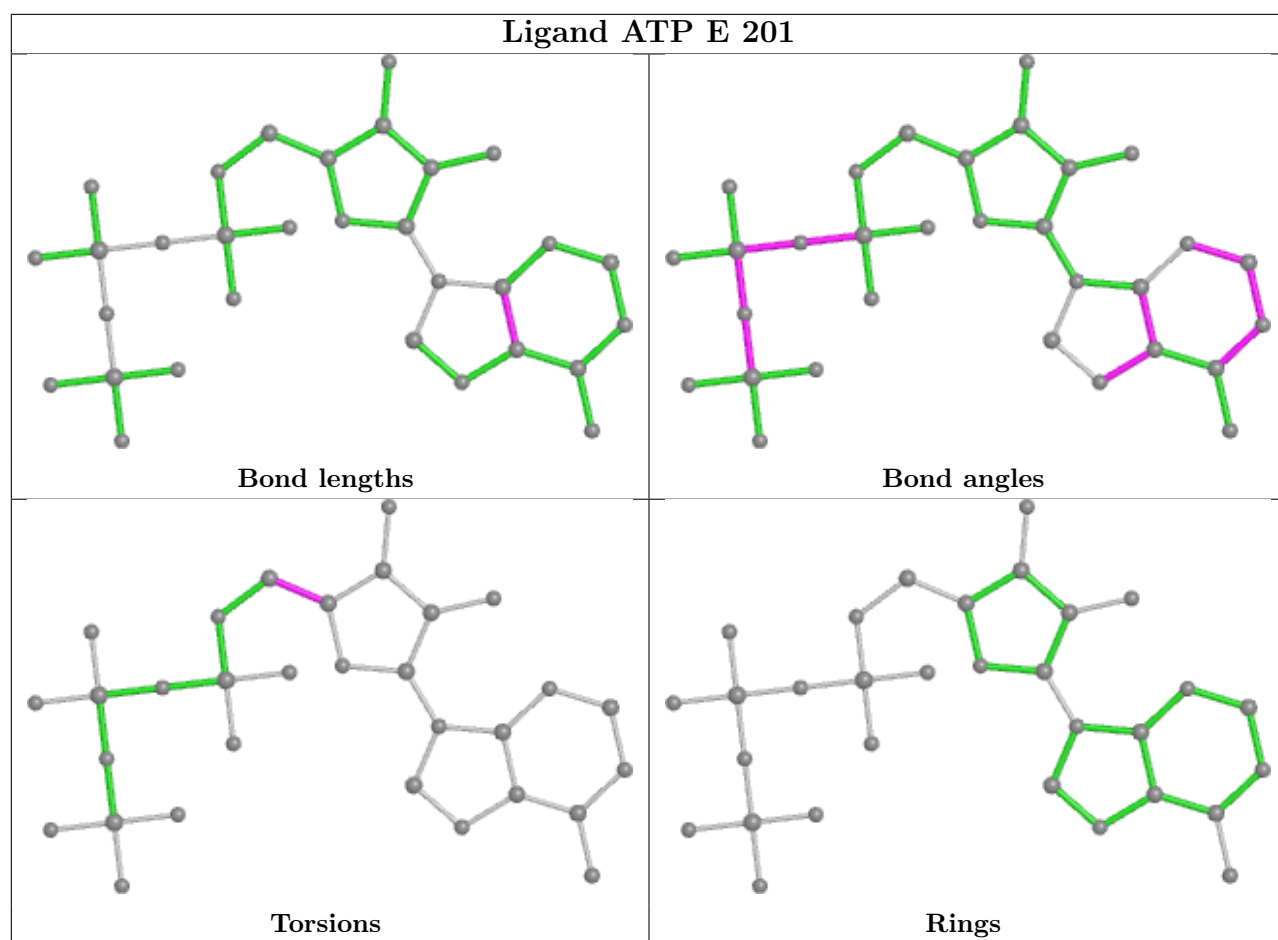
3 monomers are involved in 4 short contacts:

Mol	Chain	Res	Type	Clashes	Symm-Clashes
8	D	403	ADP	1	0
6	D	401	KG4	1	0
9	E	201	ATP	2	0

The following is a two-dimensional graphical depiction of Mogul quality analysis of bond lengths, bond angles, torsion angles, and ring geometry for all instances of the Ligand of Interest. In addition, ligands with molecular weight > 250 and outliers as shown on the validation Tables will also be included. For torsion angles, if less than 5% of the Mogul distribution of torsion angles is within 10 degrees of the torsion angle in question, then that torsion angle is considered an outlier. Any bond that is central to one or more torsion angles identified as an outlier by Mogul will be highlighted in the graph. For rings, the root-mean-square deviation (RMSD) between the ring in question and similar rings identified by Mogul is calculated over all ring torsion angles. If the average RMSD is greater than 60 degrees and the minimal RMSD between the ring in question and

any Mogul-identified rings is also greater than 60 degrees, then that ring is considered an outlier. The outliers are highlighted in purple. The color gray indicates Mogul did not find sufficient equivalents in the CSD to analyse the geometry.





## 5.7 Other polymers [i](#)

There are no such residues in this entry.

## 5.8 Polymer linkage issues [i](#)

There are no chain breaks in this entry.

## 6 Fit of model and data

### 6.1 Protein, DNA and RNA chains

In the following table, the column labelled ‘#RSRZ > 2’ contains the number (and percentage) of RSRZ outliers, followed by percent RSRZ outliers for the chain as percentile scores relative to all X-ray entries and entries of similar resolution. The OWAB column contains the minimum, median, 95<sup>th</sup> percentile and maximum values of the occupancy-weighted average B-factor per residue. The column labelled ‘Q < 0.9’ lists the number of (and percentage) of residues with an average occupancy less than 0.9.

Mol	Chain	Analysed	<RSRZ>	#RSRZ>2	OWAB(Å <sup>2</sup> )	Q<0.9
1	B	211/211 (100%)	-0.07	13 (6%) 20 21	52, 74, 148, 183	0
2	D	330/330 (100%)	-0.28	16 (4%) 30 32	52, 69, 119, 198	0
3	E	161/162 (99%)	-0.49	1 (0%) 89 90	44, 68, 110, 144	0
All	All	702/703 (99%)	-0.27	30 (4%) 35 38	44, 70, 130, 198	0

All (30) RSRZ outliers are listed below:

Mol	Chain	Res	Type	RSRZ
2	D	42	VAL	10.2
1	B	200	TRP	10.1
2	D	39	PHE	9.7
1	B	206	GLY	8.0
2	D	40	GLY	7.3
2	D	43	VAL	7.2
2	D	41	GLY	6.3
1	B	204	LYS	5.3
1	B	205	ARG	5.3
1	B	203	LYS	5.1
1	B	201	GLU	4.6
2	D	198	PRO	3.9
3	E	160	ASN	3.8
2	D	-2	GLU	3.7
2	D	38	LYS	3.7
2	D	44	PRO	3.6
2	D	-1	GLY	3.4
2	D	35	VAL	3.0
1	B	148	LYS	2.9
2	D	45	GLU	2.8
1	B	198	LEU	2.8
1	B	202	LYS	2.7
2	D	46	VAL	2.7

*Continued on next page...*

*Continued from previous page...*

Mol	Chain	Res	Type	RSRZ
2	D	200	LEU	2.6
2	D	196	PRO	2.5
1	B	195	ILE	2.3
1	B	-4	GLY	2.2
2	D	47	ALA	2.1
1	B	145	GLU	2.1
1	B	199	ASN	2.0

## 6.2 Non-standard residues in protein, DNA, RNA chains [i](#)

There are no non-standard protein/DNA/RNA residues in this entry.

## 6.3 Carbohydrates [i](#)

There are no monosaccharides in this entry.

## 6.4 Ligands [i](#)

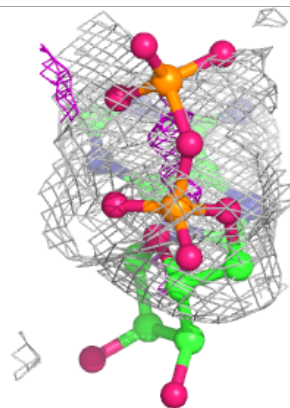
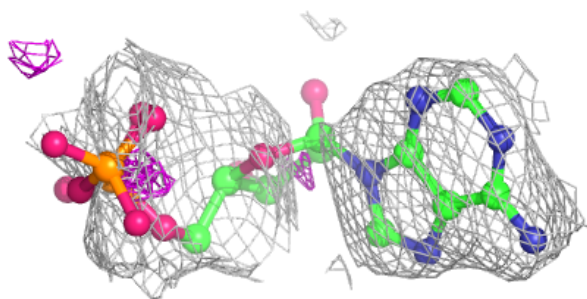
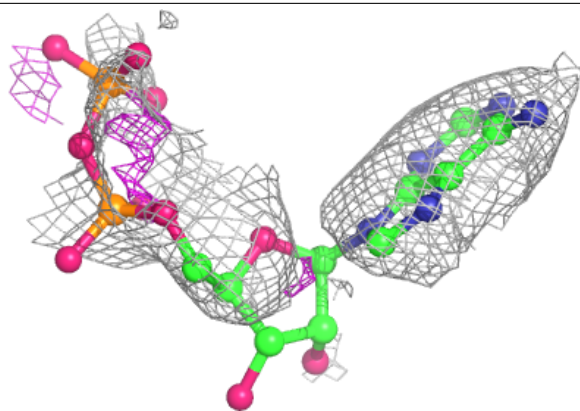
In the following table, the Atoms column lists the number of modelled atoms in the group and the number defined in the chemical component dictionary. The B-factors column lists the minimum, median, 95<sup>th</sup> percentile and maximum values of B factors of atoms in the group. The column labelled 'Q< 0.9' lists the number of atoms with occupancy less than 0.9.

Mol	Type	Chain	Res	Atoms	RSCC	RSR	B-factors(Å <sup>2</sup> )	Q<0.9
8	ADP	D	403	27/27	0.87	0.23	77,176,234,251	0
5	AE3	B	302	9/9	0.89	0.24	93,104,124,145	0
4	PGE	B	301	10/10	0.89	0.32	99,118,121,133	0
6	KG4	D	401	26/26	0.96	0.10	61,80,118,120	0
7	ZN	D	402	1/1	0.99	0.14	62,62,62,62	0
9	ATP	E	201	31/31	0.99	0.10	43,53,71,72	0
10	MG	E	202	1/1	1.00	0.11	38,38,38,38	0

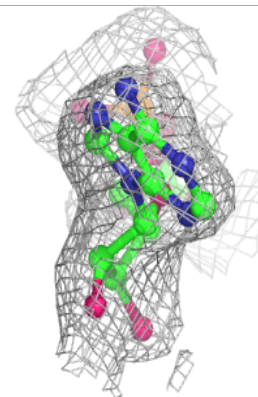
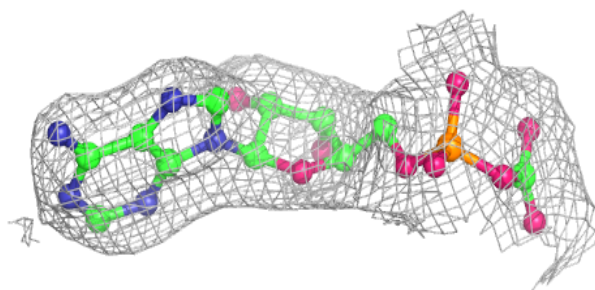
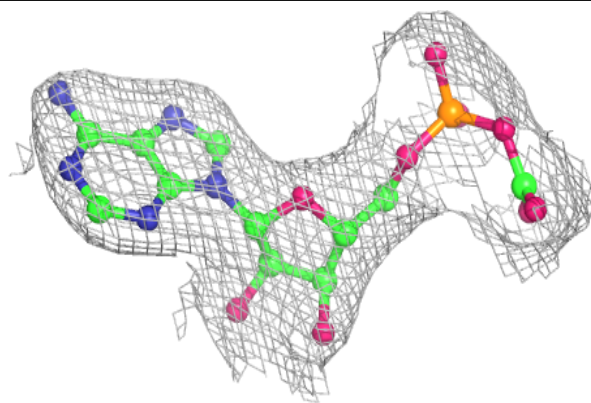
The following is a graphical depiction of the model fit to experimental electron density of all instances of the Ligand of Interest. In addition, ligands with molecular weight > 250 and outliers as shown on the geometry validation Tables will also be included. Each fit is shown from different orientation to approximate a three-dimensional view.

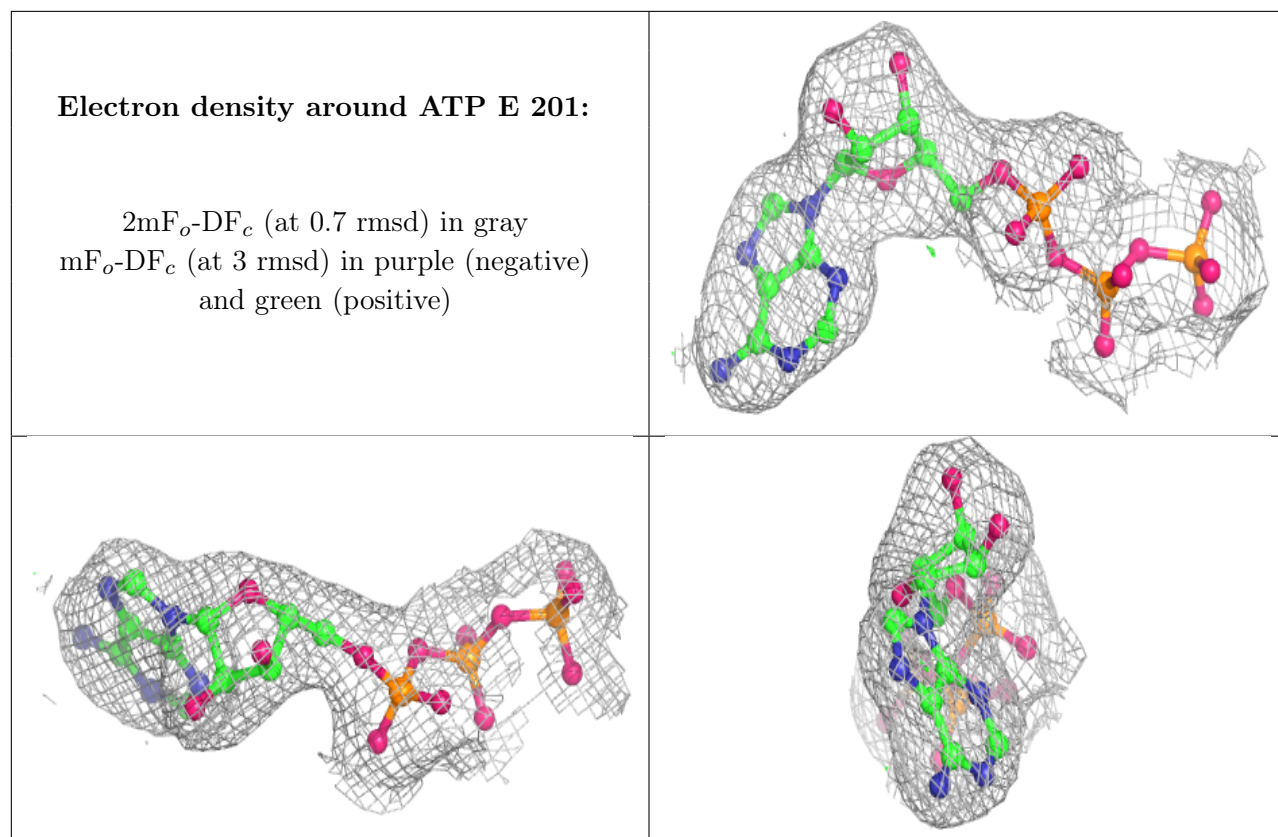
**Electron density around ADP D 403:**

$2mF_o-DF_c$  (at 0.7 rmsd) in gray  
 $mF_o-DF_c$  (at 3 rmsd) in purple (negative)  
and green (positive)

**Electron density around KG4 D 401:**

$2mF_o-DF_c$  (at 0.7 rmsd) in gray  
 $mF_o-DF_c$  (at 3 rmsd) in purple (negative)  
and green (positive)





## 6.5 Other polymers [i](#)

There are no such residues in this entry.