



Full wwPDB X-ray Structure Validation Report ⓘ

Aug 7, 2020 – 10:12 AM BST

PDB ID : 1NCD
Title : REFINED CRYSTAL STRUCTURE OF THE INFLUENZA VIRUS N9
NEURAMINIDASE-NC41 FAB COMPLEX
Authors : Tulip, W.R.; Varghese, J.N.; Colman, P.M.
Deposited on : 1992-01-21
Resolution : 2.90 Å(reported)

This is a Full wwPDB X-ray Structure Validation Report for a publicly released PDB entry.

We welcome your comments at validation@mail.wwpdb.org

A user guide is available at

<https://www.wwpdb.org/validation/2017/XrayValidationReportHelp>

with specific help available everywhere you see the ⓘ symbol.

The following versions of software and data (see [references ⓘ](#)) were used in the production of this report:

MolProbity : 4.02b-467
Mogul : 1.8.5 (274361), CSD as541be (2020)
Xtriage (Phenix) : 1.13
EDS : 2.13.1
Percentile statistics : 20191225.v01 (using entries in the PDB archive December 25th 2019)
Refmac : 5.8.0158
CCP4 : 7.0.044 (Gargrove)
Ideal geometry (proteins) : Engh & Huber (2001)
Ideal geometry (DNA, RNA) : Parkinson et al. (1996)
Validation Pipeline (wwPDB-VP) : 2.13.1

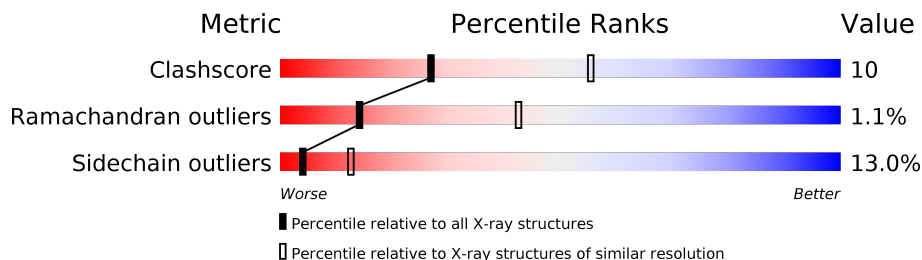
1 Overall quality at a glance

The following experimental techniques were used to determine the structure:

X-RAY DIFFRACTION

The reported resolution of this entry is 2.90 Å.

Percentile scores (ranging between 0-100) for global validation metrics of the entry are shown in the following graphic. The table shows the number of entries on which the scores are based.



Metric	Whole archive (#Entries)	Similar resolution (#Entries, resolution range(Å))
Clashscore	141614	2172 (2.90-2.90)
Ramachandran outliers	138981	2115 (2.90-2.90)
Sidechain outliers	138945	2117 (2.90-2.90)

The table below summarises the geometric issues observed across the polymeric chains and their fit to the electron density. The red, orange, yellow and green segments on the lower bar indicate the fraction of residues that contain outliers for ≥ 3 , 2, 1 and 0 types of geometric quality criteria respectively. A grey segment represents the fraction of residues that are not modelled. The numeric value for each fraction is indicated below the corresponding segment, with a dot representing fractions $\leq 5\%$

Mol	Chain	Length	Quality of chain
1	N	389	64% 28% 7% .
2	L	214	59% 34% 6% .
3	H	221	60% 36% .
4	A	6	100%
5	B	2	100%

2 Entry composition [i](#)

There are 8 unique types of molecules in this entry. The entry contains 6585 atoms, of which 0 are hydrogens and 0 are deuteriums.

In the tables below, the ZeroOcc column contains the number of atoms modelled with zero occupancy, the AltConf column contains the number of residues with at least one atom in alternate conformation and the Trace column contains the number of residues modelled with at most 2 atoms.

- Molecule 1 is a protein called INFLUENZA A SUBTYPE N9 NEURAMINIDASE.

Mol	Chain	Residues	Atoms					ZeroOcc	AltConf	Trace
			Total	C	N	O	S			
1	N	389	3069	1912	539	595	23	0	0	0

- Molecule 2 is a protein called IGG2A-KAPPA NC41 FAB (LIGHT CHAIN).

Mol	Chain	Residues	Atoms					ZeroOcc	AltConf	Trace
			Total	C	N	O	S			
2	L	214	1667	1043	280	336	8	0	0	0

There are 21 discrepancies between the modelled and reference sequences:

Chain	Residue	Modelled	Actual	Comment	Reference
L	20	THR	SER	conflict	EMBL Y11589
L	21	ILE	VAL	conflict	EMBL Y11589
L	28	ASP	ILE	conflict	EMBL Y11589
L	30	SER	GLY	conflict	EMBL Y11589
L	32	ALA	ASN	conflict	EMBL Y11589
L	34	VAL	ALA	conflict	EMBL Y11589
L	46	LEU	ALA	conflict	EMBL Y11589
L	50	TRP	SER	conflict	EMBL Y11589
L	53	THR	TYR	conflict	EMBL Y11589
L	55	HIS	TYR	conflict	EMBL Y11589
L	56	ILE	SER	conflict	EMBL Y11589
L	63	ALA	THR	conflict	EMBL Y11589
L	71	TYR	PHE	conflict	EMBL Y11589
L	77	SER	ASN	conflict	EMBL Y11589
L	80	ALA	SER	conflict	EMBL Y11589
L	85	LEU	GLU	conflict	EMBL Y11589
L	87	TYR	PHE	conflict	EMBL Y11589
L	91	HIS	TYR	conflict	EMBL Y11589
L	92	TYR	ASN	conflict	EMBL Y11589
L	93	SER	ARG	conflict	EMBL Y11589

Continued on next page...

Continued from previous page...

Chain	Residue	Modelled	Actual	Comment	Reference
L	94	PRO	TYR	conflict	EMBL Y11589

- Molecule 3 is a protein called IGG2A-KAPPA NC41 FAB (HEAVY CHAIN).

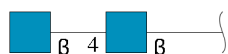
Mol	Chain	Residues	Atoms					ZeroOcc	AltConf	Trace
			Total	C	N	O	S			
3	H	221	1665	1050	273	335	7	0	0	0

- Molecule 4 is an oligosaccharide called alpha-D-mannopyranose-(1-2)-alpha-D-mannopyranose-(1-2)-alpha-D-mannopyranose-(1-3)-beta-D-mannopyranose-(1-4)-2-acetamido-2-deoxy-beta-D-glucopyranose-(1-4)-2-acetamido-2-deoxy-beta-D-glucopyranose.



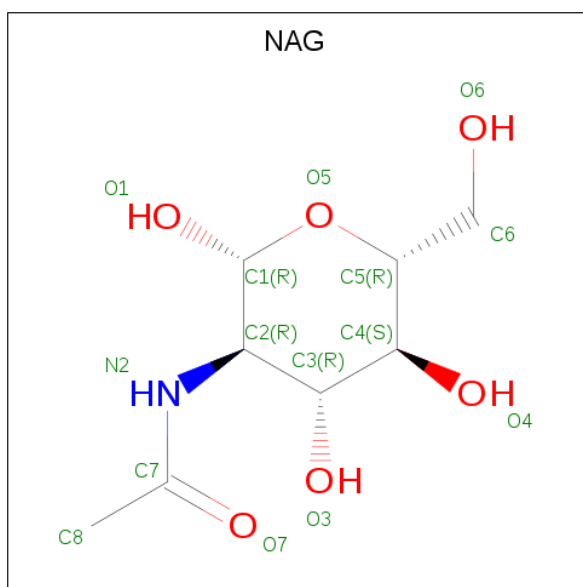
Mol	Chain	Residues	Atoms				ZeroOcc	AltConf	Trace
			Total	C	N	O			
4	A	6	72	40	2	30	0	0	0

- Molecule 5 is an oligosaccharide called 2-acetamido-2-deoxy-beta-D-glucopyranose-(1-4)-2-acetamido-2-deoxy-beta-D-glucopyranose.



Mol	Chain	Residues	Atoms				ZeroOcc	AltConf	Trace
			Total	C	N	O			
5	B	2	28	16	2	10	0	0	0

- Molecule 6 is 2-acetamido-2-deoxy-beta-D-glucopyranose (three-letter code: NAG) (formula: C₈H₁₅NO₆).



Mol	Chain	Residues	Atoms				ZeroOcc	AltConf
			Total	C	N	O		
6	N	1	14	8	1	5	0	0

- Molecule 7 is CALCIUM ION (three-letter code: CA) (formula: Ca).

Mol	Chain	Residues	Atoms		ZeroOcc	AltConf
			Total	Ca		
7	N	1	1	1	0	0

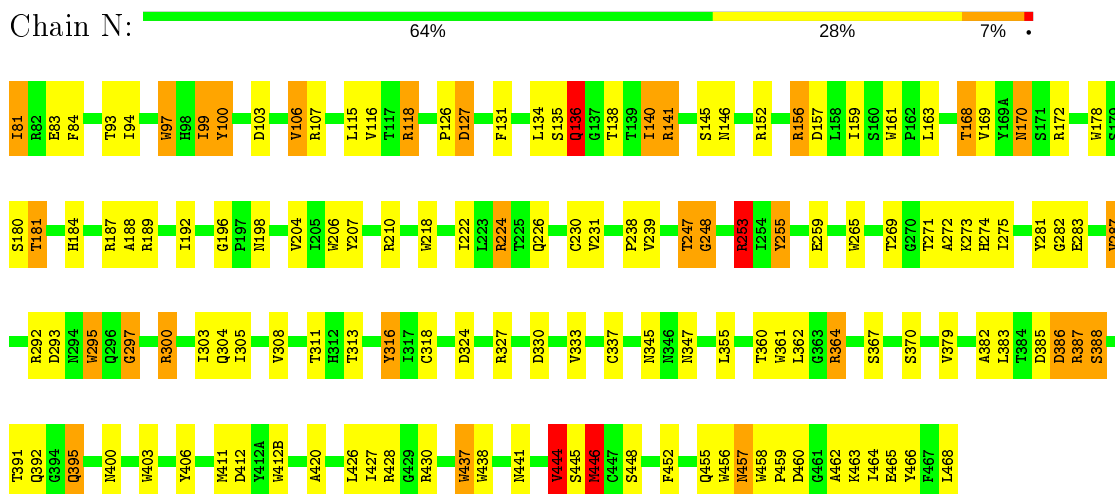
- Molecule 8 is water.

Mol	Chain	Residues	Atoms		ZeroOcc	AltConf
			Total	O		
8	N	63	63	63	0	0
8	L	2	2	2	0	0
8	H	4	4	4	0	0

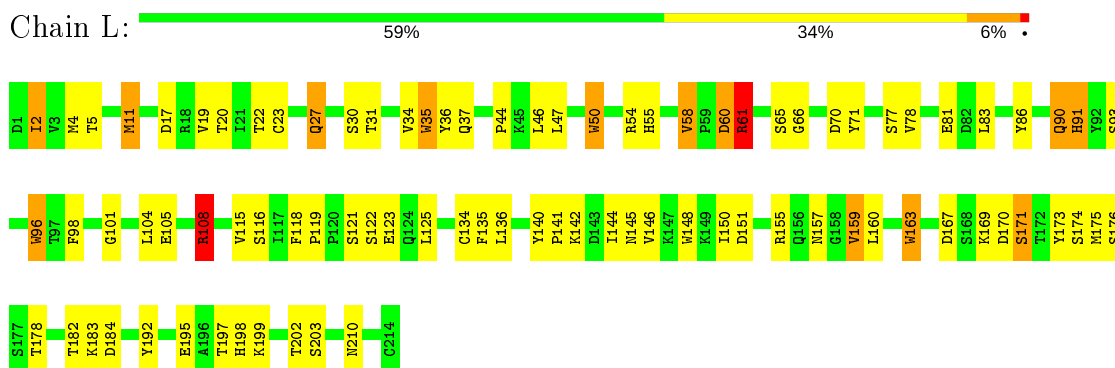
3 Residue-property plots [i](#)

These plots are drawn for all protein, RNA, DNA and oligosaccharide chains in the entry. The first graphic for a chain summarises the proportions of the various outlier classes displayed in the second graphic. The second graphic shows the sequence view annotated by issues in geometry. Residues are color-coded according to the number of geometric quality criteria for which they contain at least one outlier: green = 0, yellow = 1, orange = 2 and red = 3 or more. Stretches of 2 or more consecutive residues without any outlier are shown as a green connector. Residues present in the sample, but not in the model, are shown in grey.

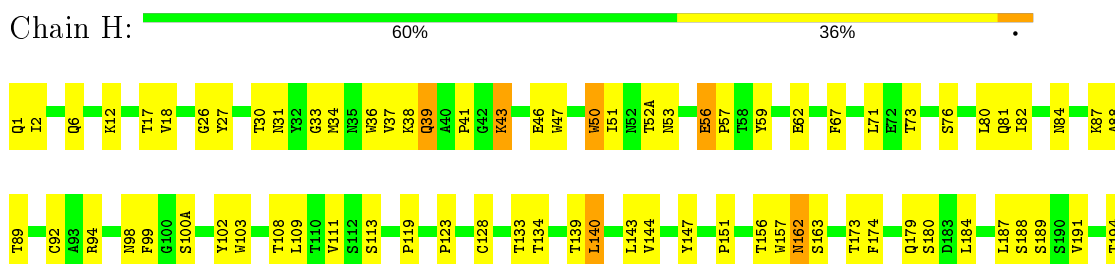
- Molecule 1: INFLUENZA A SUBTYPE N9 NEURAMINIDASE



- Molecule 2: IGG2A-KAPPA NC41 FAB (LIGHT CHAIN)



- Molecule 3: IGG2A-KAPPA NC41 FAB (HEAVY CHAIN)





- Molecule 4: α -D-mannopyranose-(1-2)- α -D-mannopyranose-(1-2)- α -D-mannopyranose-(1-3)- β -D-mannopyranose-(1-4)-2-acetamido-2-deoxy- β -D-glucopyranose-(1-4)-2-acetamido-2-deoxy- β -D-glucopyranose

Chain A:  100%



- Molecule 5: 2-acetamido-2-deoxy- β -D-glucopyranose-(1-4)-2-acetamido-2-deoxy- β -D-glucopyranose

Chain B:  100%



4 Data and refinement statistics

Property	Value	Source
Space group	P 4 21 2	Depositor
Cell constants a, b, c, α , β , γ	167.00Å 167.00Å 124.00Å 90.00° 90.00° 90.00°	Depositor
Resolution (Å)	(Not available) – 2.90 8.00 – 2.50	Depositor EDS
% Data completeness (in resolution range)	(Not available) ((Not available)-2.90) 54.1 (8.00-2.50)	Depositor EDS
R_{merge}	(Not available)	Depositor
R_{sym}	(Not available)	Depositor
$\langle I/\sigma(I) \rangle$	-	Xtrriage
Refinement program	X-PLOR	Depositor
R, R_{free}	0.157 , (Not available) 0.233 , (Not available)	Depositor DCC
R_{free} test set	No test flags present.	wwPDB-VP
Wilson B-factor (Å ²)	25.0	Xtrriage
Anisotropy	0.102	Xtrriage
Bulk solvent k_{sol} (e/Å ³), B_{sol} (Å ²)	0.29 , 50.6	EDS
L-test for twinning ¹	$\langle L \rangle = 0.36$, $\langle L^2 \rangle = 0.19$	Xtrriage
Estimated twinning fraction	No twinning to report.	Xtrriage
F_o, F_c correlation	0.83	EDS
Total number of atoms	6585	wwPDB-VP
Average B, all atoms (Å ²)	18.0	wwPDB-VP

Xtrriage's analysis on translational NCS is as follows: *The largest off-origin peak in the Patterson function is 3.69% of the height of the origin peak. No significant pseudotranslation is detected.*

¹Theoretical values of $\langle |L| \rangle$, $\langle L^2 \rangle$ for acentric reflections are 0.5, 0.333 respectively for untwinned datasets, and 0.375, 0.2 for perfectly twinned datasets.

5 Model quality i

5.1 Standard geometry i

Bond lengths and bond angles in the following residue types are not validated in this section: CA, BMA, NAG, MAN

The Z score for a bond length (or angle) is the number of standard deviations the observed value is removed from the expected value. A bond length (or angle) with $|Z| > 5$ is considered an outlier worth inspection. RMSZ is the root-mean-square of all Z scores of the bond lengths (or angles).

Mol	Chain	Bond lengths		Bond angles	
		RMSZ	# $ Z > 5$	RMSZ	# $ Z > 5$
1	N	1.02	2/3151 (0.1%)	1.91	92/4292 (2.1%)
2	L	0.89	0/1708	1.72	32/2323 (1.4%)
3	H	0.86	0/1707	1.72	28/2326 (1.2%)
All	All	0.95	2/6566 (0.0%)	1.81	152/8941 (1.7%)

Chiral center outliers are detected by calculating the chiral volume of a chiral center and verifying if the center is modelled as a planar moiety or with the opposite hand. A planarity outlier is detected by checking planarity of atoms in a peptide group, atoms in a mainchain group or atoms of a sidechain that are expected to be planar.

Mol	Chain	#Chirality outliers	#Planarity outliers
1	N	0	2
2	L	0	1
All	All	0	3

All (2) bond length outliers are listed below:

Mol	Chain	Res	Type	Atoms	Z	Observed(Å)	Ideal(Å)
1	N	157	ASP	CB-CG	5.82	1.64	1.51
1	N	438	TRP	CD1-NE1	-5.46	1.28	1.38

All (152) bond angle outliers are listed below:

Mol	Chain	Res	Type	Atoms	Z	Observed(°)	Ideal(°)
2	L	54	ARG	NE-CZ-NH2	-14.01	113.29	120.30
1	N	224	ARG	NE-CZ-NH1	10.30	125.45	120.30
1	N	107	ARG	NE-CZ-NH1	10.27	125.43	120.30
1	N	300	ARG	NE-CZ-NH1	9.85	125.22	120.30
1	N	210	ARG	NE-CZ-NH2	-9.66	115.47	120.30
1	N	438	TRP	CG-CD2-CE3	9.50	142.45	133.90

Continued on next page...

Continued from previous page...

Mol	Chain	Res	Type	Atoms	Z	Observed(°)	Ideal(°)
1	N	156	ARG	NE-CZ-NH2	-9.07	115.77	120.30
2	L	54	ARG	NE-CZ-NH1	9.03	124.81	120.30
2	L	148	TRP	CD1-CG-CD2	8.94	113.45	106.30
1	N	438	TRP	CD1-CG-CD2	8.92	113.44	106.30
1	N	456	TRP	CG-CD2-CE3	8.88	141.90	133.90
1	N	364	ARG	NE-CZ-NH1	8.88	124.74	120.30
1	N	300	ARG	NE-CZ-NH2	-8.86	115.87	120.30
3	H	103	TRP	CD1-CG-CD2	8.86	113.39	106.30
1	N	412(B)	TRP	CE2-CD2-CG	-8.70	100.34	107.30
3	H	157	TRP	CD1-CG-CD2	8.68	113.24	106.30
1	N	456	TRP	CE2-CD2-CG	-8.56	100.45	107.30
1	N	141	ARG	NE-CZ-NH1	8.55	124.57	120.30
1	N	438	TRP	CE2-CD2-CG	-8.53	100.48	107.30
1	N	438	TRP	CB-CG-CD1	-8.50	115.95	127.00
1	N	281	TYR	CB-CG-CD2	-8.48	115.91	121.00
1	N	118	ARG	NE-CZ-NH1	8.44	124.52	120.30
1	N	327	ARG	NE-CZ-NH1	8.41	124.51	120.30
1	N	156	ARG	NE-CZ-NH1	8.38	124.49	120.30
1	N	218	TRP	CD1-CG-CD2	8.34	112.97	106.30
1	N	446	MET	CG-SD-CE	-8.30	86.92	100.20
1	N	265	TRP	CD1-CG-CD2	8.18	112.84	106.30
1	N	178	TRP	CE2-CD2-CG	-8.10	100.82	107.30
1	N	292	ARG	NE-CZ-NH1	8.10	124.35	120.30
3	H	27	TYR	CB-CG-CD2	-8.07	116.16	121.00
2	L	163	TRP	CD1-CG-CD2	8.02	112.71	106.30
3	H	50	TRP	CD1-CG-CD2	7.98	112.69	106.30
1	N	161	TRP	CE2-CD2-CG	-7.97	100.93	107.30
1	N	97	TRP	CE2-CD2-CG	-7.93	100.96	107.30
1	N	206	TRP	CD1-CG-CD2	7.91	112.63	106.30
1	N	97	TRP	CD1-CG-CD2	7.81	112.55	106.30
2	L	50	TRP	CD1-CG-CD2	7.79	112.53	106.30
1	N	100	TYR	CB-CG-CD2	-7.78	116.33	121.00
1	N	161	TRP	CD1-CG-CD2	7.78	112.52	106.30
1	N	218	TRP	CE2-CD2-CG	-7.73	101.12	107.30
1	N	403	TRP	CD1-CG-CD2	7.72	112.48	106.30
1	N	412(B)	TRP	CD1-CG-CD2	7.70	112.46	106.30
1	N	456	TRP	CD1-CG-CD2	7.68	112.44	106.30
1	N	403	TRP	CE2-CD2-CG	-7.63	101.19	107.30
2	L	11	MET	CA-CB-CG	-7.58	100.41	113.30
1	N	295	TRP	CD1-CG-CD2	7.57	112.36	106.30
3	H	157	TRP	CE2-CD2-CG	-7.56	101.25	107.30
2	L	148	TRP	CE2-CD2-CG	-7.47	101.32	107.30

Continued on next page...

Continued from previous page...

Mol	Chain	Res	Type	Atoms	Z	Observed(°)	Ideal(°)
1	N	97	TRP	CG-CD2-CE3	7.46	140.61	133.90
1	N	403	TRP	CG-CD2-CE3	7.46	140.61	133.90
2	L	61	ARG	NE-CZ-NH1	7.42	124.01	120.30
1	N	297	GLY	CA-C-N	-7.41	100.91	117.20
3	H	103	TRP	CE2-CD2-CG	-7.38	101.39	107.30
2	L	35	TRP	CE2-CD2-CG	-7.33	101.44	107.30
1	N	403	TRP	CB-CG-CD1	-7.32	117.49	127.00
2	L	50	TRP	CE2-CD2-CG	-7.28	101.47	107.30
1	N	361	TRP	CD1-CG-CD2	7.25	112.10	106.30
1	N	178	TRP	CD1-CG-CD2	7.18	112.04	106.30
2	L	61	ARG	NE-CZ-NH2	-7.13	116.73	120.30
2	L	155	ARG	NE-CZ-NH2	-7.12	116.74	120.30
2	L	163	TRP	CE2-CD2-CG	-7.11	101.61	107.30
2	L	35	TRP	CD1-CG-CD2	7.08	111.96	106.30
1	N	437	TRP	CE2-CD2-CG	-7.04	101.66	107.30
3	H	36	TRP	CD1-CG-CD2	6.97	111.88	106.30
1	N	295	TRP	CE2-CD2-CG	-6.97	101.73	107.30
1	N	253	ARG	NE-CZ-NH2	-6.92	116.84	120.30
1	N	161	TRP	CG-CD2-CE3	6.92	140.13	133.90
1	N	437	TRP	CG-CD2-CE3	6.87	140.08	133.90
1	N	206	TRP	CE2-CD2-CG	-6.83	101.84	107.30
1	N	136	GLN	CG-CD-NE2	6.76	132.93	116.70
1	N	361	TRP	CE2-CD2-CG	-6.70	101.94	107.30
3	H	50	TRP	CE2-CD2-CG	-6.70	101.94	107.30
1	N	172	ARG	NE-CZ-NH1	6.70	123.65	120.30
1	N	406	TYR	CB-CG-CD2	-6.66	117.00	121.00
2	L	96	TRP	CE2-CD2-CG	-6.64	101.99	107.30
1	N	226	GLN	N-CA-C	6.59	128.78	111.00
1	N	265	TRP	CG-CD1-NE1	-6.52	103.58	110.10
3	H	199	TRP	CE2-CD2-CG	-6.46	102.13	107.30
1	N	265	TRP	CE2-CD2-CG	-6.42	102.17	107.30
1	N	387	ARG	NE-CZ-NH1	6.33	123.47	120.30
1	N	295	TRP	CG-CD2-CE3	6.31	139.58	133.90
3	H	36	TRP	CE2-CD2-CG	-6.27	102.29	107.30
3	H	199	TRP	CD1-CG-CD2	6.23	111.28	106.30
1	N	97	TRP	CB-CG-CD1	-6.18	118.96	127.00
2	L	163	TRP	CG-CD2-CE3	6.18	139.46	133.90
1	N	161	TRP	CB-CG-CD1	-6.17	118.97	127.00
3	H	59	TYR	CB-CG-CD1	-6.17	117.30	121.00
1	N	157	ASP	CA-CB-CG	6.16	126.95	113.40
3	H	157	TRP	CA-C-N	-6.15	103.68	117.20
2	L	96	TRP	CD1-CG-CD2	6.11	111.19	106.30

Continued on next page...

Continued from previous page...

Mol	Chain	Res	Type	Atoms	Z	Observed(°)	Ideal(°)
1	N	438	TRP	CG-CD1-NE1	-6.11	103.99	110.10
1	N	412(B)	TRP	CG-CD2-CE3	6.07	139.36	133.90
1	N	437	TRP	CD1-CG-CD2	6.06	111.15	106.30
2	L	91	HIS	CA-CB-CG	6.04	123.86	113.60
1	N	99	ILE	CB-CA-C	-6.03	99.53	111.60
3	H	47	TRP	CE2-CD2-CG	-6.01	102.49	107.30
1	N	178	TRP	CB-CG-CD1	-5.98	119.23	127.00
1	N	106	VAL	CG1-CB-CG2	-5.95	101.38	110.90
1	N	385	ASP	CA-C-N	5.84	130.06	117.20
2	L	169	LYS	N-CA-C	-5.80	95.34	111.00
1	N	412	ASP	CB-CG-OD1	5.78	123.50	118.30
2	L	210	ASN	CA-CB-CG	-5.76	100.73	113.40
2	L	148	TRP	CG-CD1-NE1	-5.76	104.34	110.10
1	N	468	LEU	CA-C-O	-5.75	108.01	120.10
1	N	198	ASN	CB-CG-ND2	5.73	130.45	116.70
1	N	308	VAL	CA-CB-CG1	-5.73	102.31	110.90
1	N	178	TRP	CG-CD2-CE3	5.71	139.04	133.90
1	N	457	ASN	C-N-CA	5.69	135.92	121.70
3	H	202	SER	N-CA-CB	-5.68	101.98	110.50
2	L	50	TRP	CG-CD2-CE3	5.62	138.96	133.90
1	N	444	VAL	CB-CA-C	-5.60	100.75	111.40
3	H	140	LEU	CA-CB-CG	5.60	128.18	115.30
3	H	47	TRP	CD1-CG-CD2	5.60	110.78	106.30
1	N	412(B)	TRP	CB-CG-CD1	-5.59	119.73	127.00
3	H	37	VAL	CG1-CB-CG2	-5.59	101.95	110.90
3	H	103	TRP	CG-CD2-CE3	5.56	138.90	133.90
1	N	127	ASP	N-CA-CB	-5.51	100.69	110.60
1	N	316	TYR	CB-CG-CD2	-5.50	117.70	121.00
3	H	157	TRP	CB-CG-CD1	-5.49	119.87	127.00
1	N	255	TYR	CB-CG-CD2	-5.48	117.71	121.00
3	H	103	TRP	CG-CD1-NE1	-5.48	104.62	110.10
3	H	39	GLN	N-CA-C	-5.48	96.22	111.00
1	N	152	ARG	CA-CB-CG	5.47	125.44	113.40
1	N	218	TRP	CG-CD2-CE3	5.46	138.81	133.90
2	L	36	TYR	CB-CG-CD2	-5.46	117.73	121.00
2	L	148	TRP	CG-CD2-CE3	5.42	138.77	133.90
3	H	162	ASN	CA-CB-CG	-5.42	101.48	113.40
1	N	206	TRP	CG-CD1-NE1	-5.41	104.69	110.10
3	H	50	TRP	CG-CD1-NE1	-5.39	104.71	110.10
1	N	347	ASN	CA-CB-CG	5.33	125.12	113.40
2	L	163	TRP	CG-CD1-NE1	-5.32	104.78	110.10
1	N	247	THR	N-CA-CB	-5.31	100.21	110.30

Continued on next page...

Continued from previous page...

Mol	Chain	Res	Type	Atoms	Z	Observed(°)	Ideal(°)
2	L	173	TYR	CB-CG-CD1	-5.31	117.81	121.00
3	H	94	ARG	CB-CG-CD	-5.31	97.79	111.60
3	H	223	ILE	N-CA-C	-5.28	96.75	111.00
1	N	466	TYR	CB-CG-CD2	-5.28	117.83	121.00
1	N	253	ARG	NE-CZ-NH1	5.28	122.94	120.30
2	L	163	TRP	CB-CG-CD1	-5.28	120.14	127.00
2	L	35	TRP	CG-CD1-NE1	-5.18	104.92	110.10
2	L	171	SER	N-CA-CB	-5.18	102.73	110.50
2	L	104	LEU	CB-CG-CD2	-5.18	102.20	111.00
1	N	206	TRP	CG-CD2-CE3	5.17	138.55	133.90
3	H	128	CYS	CA-C-N	5.13	126.46	116.20
1	N	239	VAL	CG1-CB-CG2	-5.13	102.69	110.90
1	N	297	GLY	O-C-N	5.12	130.89	122.70
1	N	386	ASP	CA-CB-CG	5.11	124.63	113.40
2	L	108	ARG	NE-CZ-NH1	5.07	122.84	120.30
2	L	50	TRP	CG-CD1-NE1	-5.04	105.06	110.10
3	H	157	TRP	CG-CD1-NE1	-5.04	105.06	110.10
1	N	218	TRP	CG-CD1-NE1	-5.03	105.07	110.10
1	N	224	ARG	NE-CZ-NH2	-5.02	117.79	120.30
1	N	265	TRP	CG-CD2-CE3	5.01	138.41	133.90

There are no chirality outliers.

All (3) planarity outliers are listed below:

Mol	Chain	Res	Type	Group
2	L	140	TYR	Sidechain
1	N	196	GLY	Peptide
1	N	248	GLY	Peptide

5.2 Too-close contacts [\(i\)](#)

In the following table, the Non-H and H(model) columns list the number of non-hydrogen atoms and hydrogen atoms in the chain respectively. The H(added) column lists the number of hydrogen atoms added and optimized by MolProbity. The Clashes column lists the number of clashes within the asymmetric unit, whereas Symm-Clashes lists symmetry related clashes.

Mol	Chain	Non-H	H(model)	H(added)	Clashes	Symm-Clashes
1	N	3069	0	2886	62	0
2	L	1667	0	1598	38	0
3	H	1665	0	1612	34	0
4	A	72	0	61	0	0

Continued on next page...

Continued from previous page...

Mol	Chain	Non-H	H(model)	H(added)	Clashes	Symm-Clashes
5	B	28	0	25	0	0
6	N	14	0	13	0	0
7	N	1	0	0	0	0
8	H	4	0	0	0	0
8	L	2	0	0	0	0
8	N	63	0	0	0	0
All	All	6585	0	6195	129	0

The all-atom clashscore is defined as the number of clashes found per 1000 atoms (including hydrogen atoms). The all-atom clashscore for this structure is 10.

All (129) close contacts within the same asymmetric unit are listed below, sorted by their clash magnitude.

Atom-1	Atom-2	Interatomic distance (Å)	Clash overlap (Å)
2:L:91:HIS:HB2	3:H:100(A):SER:HB2	1.65	0.77
1:N:426:LEU:HD11	1:N:444:VAL:HG22	1.67	0.75
1:N:97:TRP:H	1:N:395:GLN:HE22	1.40	0.69
2:L:108:ARG:HG3	2:L:171:SER:HB2	1.75	0.67
1:N:81:ILE:HG13	1:N:83:GLU:H	1.59	0.66
1:N:272:ALA:HA	1:N:316:TYR:CE1	2.32	0.65
1:N:168:THR:HB	1:N:170:ASN:ND2	2.11	0.64
2:L:46:LEU:HD22	2:L:55:HIS:HB2	1.79	0.64
1:N:287:VAL:HG22	1:N:305:ILE:HB	1.78	0.64
2:L:2:ILE:HD12	2:L:2:ILE:H	1.63	0.63
1:N:97:TRP:HB3	1:N:446:MET:HG2	1.81	0.63
3:H:123:PRO:HD3	3:H:221:LYS:NZ	2.15	0.62
3:H:84:ASN:HA	3:H:111:VAL:HB	1.82	0.62
2:L:2:ILE:HD13	2:L:90:GLN:NE2	2.14	0.61
3:H:173:THR:HA	3:H:189:SER:HB3	1.84	0.60
1:N:135:SER:O	1:N:156:ARG:HA	2.03	0.59
2:L:96:TRP:HZ2	3:H:99:PHE:HB3	1.66	0.59
2:L:23:CYS:HB2	2:L:35:TRP:CH2	2.38	0.59
3:H:199:TRP:HD1	3:H:205:ILE:HG12	1.69	0.58
3:H:12:LYS:O	3:H:111:VAL:HA	2.04	0.58
2:L:47:LEU:HA	2:L:58:VAL:HG11	1.85	0.58
1:N:300:ARG:NH1	1:N:324:ASP:HA	2.19	0.57
1:N:97:TRP:H	1:N:395:GLN:NE2	2.01	0.57
1:N:135:SER:HB2	1:N:159:ILE:HD13	1.87	0.56
1:N:94:ILE:HG23	1:N:448:SER:HB2	1.88	0.55
1:N:457:ASN:N	1:N:457:ASN:ND2	2.54	0.55
3:H:143:LEU:HD12	3:H:188:SER:HB3	1.89	0.55

Continued on next page...

Continued from previous page...

Atom-1	Atom-2	Interatomic distance (Å)	Clash overlap (Å)
3:H:67:PHE:CE2	3:H:82:ILE:HG12	2.42	0.54
1:N:392:GLN:NE2	1:N:452:PHE:HE2	2.06	0.54
1:N:238:PRO:HB2	1:N:305:ILE:HD13	1.91	0.53
1:N:457:ASN:N	1:N:457:ASN:HD22	2.06	0.53
1:N:146:ASN:OD1	1:N:437:TRP:HB3	2.09	0.52
3:H:18:VAL:O	3:H:81:GLN:HA	2.10	0.52
2:L:23:CYS:HB2	2:L:35:TRP:HH2	1.75	0.52
2:L:115:VAL:HG22	2:L:136:LEU:HD23	1.92	0.52
1:N:275:ILE:HG12	1:N:303:ILE:HD11	1.91	0.52
3:H:162:ASN:OD1	3:H:205:ILE:HA	2.10	0.51
2:L:86:TYR:O	2:L:101:GLY:HA2	2.10	0.51
1:N:103:ASP:HB3	1:N:131:PHE:HE2	1.75	0.51
2:L:160:LEU:HD11	3:H:179:GLN:NE2	2.25	0.51
3:H:224:GLU:HG2	3:H:225:PRO:HD2	1.92	0.51
1:N:181:THR:HG22	1:N:192:ILE:HB	1.93	0.51
3:H:34:MET:O	3:H:50:TRP:HA	2.10	0.51
3:H:144:VAL:HB	3:H:187:LEU:HB3	1.93	0.50
1:N:395:GLN:HA	1:N:455:GLN:NE2	2.25	0.50
1:N:272:ALA:HA	1:N:316:TYR:HE1	1.76	0.50
3:H:39:GLN:O	3:H:88:ALA:HB1	2.11	0.49
1:N:293:ASP:HB3	1:N:297:GLY:HA3	1.94	0.49
3:H:199:TRP:CD1	3:H:205:ILE:HG12	2.46	0.49
2:L:125:LEU:O	2:L:183:LYS:HE2	2.11	0.49
1:N:457:ASN:ND2	1:N:457:ASN:H	2.10	0.49
1:N:333:VAL:HA	1:N:386:ASP:O	2.12	0.49
1:N:106:VAL:HG12	1:N:462:ALA:CB	2.43	0.49
2:L:61:ARG:HG2	2:L:61:ARG:HH11	1.78	0.48
3:H:123:PRO:HD3	3:H:221:LYS:HZ3	1.78	0.48
2:L:34:VAL:HG23	2:L:91:HIS:HD2	1.79	0.47
1:N:100:TYR:CE2	1:N:163:LEU:HD11	2.50	0.47
2:L:121:SER:OG	2:L:123:GLU:HG2	2.13	0.47
2:L:141:PRO:HG2	2:L:199:LYS:HD3	1.97	0.47
1:N:428:ARG:NH1	1:N:460:ASP:OD2	2.47	0.47
1:N:180:SER:HA	1:N:192:ILE:O	2.15	0.47
3:H:1:GLN:HA	3:H:1:GLN:OE1	2.15	0.46
2:L:30:SER:O	2:L:31:THR:HB	2.14	0.46
1:N:430:ARG:HE	1:N:437:TRP:HA	1.81	0.46
2:L:159:VAL:HA	2:L:178:THR:O	2.15	0.46
2:L:17:ASP:O	2:L:78:VAL:HG23	2.15	0.45
1:N:136:GLN:NE2	1:N:156:ARG:HD3	2.31	0.45
1:N:463:LYS:C	1:N:465:GLU:H	2.19	0.45

Continued on next page...

Continued from previous page...

Atom-1	Atom-2	Interatomic distance (Å)	Clash overlap (Å)
2:L:31:THR:HG22	2:L:50:TRP:HE3	1.82	0.45
2:L:4:MET:HB2	2:L:98:PHE:O	2.17	0.45
1:N:231:VAL:HG11	1:N:282:GLY:HA3	1.97	0.45
2:L:116:SER:O	2:L:134:CYS:HA	2.17	0.45
2:L:2:ILE:HD13	2:L:90:GLN:HE22	1.79	0.45
3:H:6:GLN:NE2	3:H:92:CYS:H	2.15	0.45
2:L:118:PHE:HE2	2:L:135:PHE:CD2	2.36	0.45
2:L:136:LEU:HD13	2:L:146:VAL:HG11	1.99	0.44
1:N:395:GLN:HG2	1:N:455:GLN:HE21	1.82	0.44
1:N:360:THR:HG21	1:N:382:ALA:HB3	1.99	0.44
1:N:395:GLN:HA	1:N:455:GLN:HE21	1.82	0.44
1:N:138:THR:HG21	1:N:145:SER:HA	1.98	0.44
3:H:2:ILE:HA	3:H:26:GLY:HA3	1.99	0.44
3:H:98:ASN:O	3:H:99:PHE:HB2	2.16	0.44
2:L:144:ILE:HG13	2:L:198:HIS:HB2	2.00	0.44
2:L:150:ILE:HG23	2:L:192:TYR:CE1	2.52	0.44
3:H:38:LYS:HB3	3:H:46:GLU:HB3	1.99	0.44
3:H:119:PRO:HB3	3:H:147:TYR:HB3	1.99	0.44
2:L:19:VAL:HG22	2:L:20:THR:N	2.33	0.43
3:H:123:PRO:HD3	3:H:221:LYS:HZ1	1.82	0.43
2:L:27:GLN:HE21	2:L:27:GLN:HB3	1.65	0.43
1:N:367:SER:HB3	1:N:370:SER:O	2.19	0.43
2:L:37:GLN:O	2:L:44:PRO:HA	2.19	0.43
3:H:30:THR:HG22	3:H:53:ASN:HD22	1.83	0.43
2:L:66:GLY:HA3	2:L:71:TYR:HA	1.99	0.43
1:N:464:ILE:O	1:N:464:ILE:CG2	2.66	0.43
2:L:2:ILE:HD12	2:L:2:ILE:N	2.32	0.43
1:N:463:LYS:C	1:N:465:GLU:N	2.72	0.43
1:N:400:ASN:HB3	3:H:31:ASN:O	2.19	0.42
3:H:17:THR:HA	3:H:82:ILE:O	2.18	0.42
1:N:106:VAL:HG12	1:N:462:ALA:HB2	2.00	0.42
1:N:116:VAL:HG22	1:N:140:ILE:HA	2.01	0.42
1:N:355:LEU:HD13	1:N:383:LEU:HD13	2.01	0.42
3:H:56:GLU:HA	3:H:57:PRO:HD3	1.70	0.42
2:L:2:ILE:HD11	2:L:93:SER:HB2	2.02	0.42
1:N:248:GLY:O	1:N:274:HIS:HD2	2.01	0.42
1:N:379:VAL:CG1	1:N:388:SER:HB2	2.49	0.42
1:N:430:ARG:NE	1:N:437:TRP:HA	2.34	0.42
1:N:188:ALA:HB3	1:N:207:TYR:CZ	2.55	0.42
1:N:458:TRP:HA	1:N:459:PRO:HD2	1.80	0.42
2:L:174:SER:C	3:H:174:PHE:HE1	2.22	0.41

Continued on next page...

Continued from previous page...

Atom-1	Atom-2	Interatomic distance (Å)	Clash overlap (Å)
1:N:115:LEU:HD21	1:N:169:VAL:HG22	2.01	0.41
1:N:271:THR:O	1:N:273:LYS:HD2	2.19	0.41
1:N:126:PRO:HD2	1:N:184:HIS:CD2	2.55	0.41
3:H:33:GLY:HA2	3:H:52(A):THR:HG23	2.03	0.41
3:H:139:THR:HA	3:H:191:VAL:O	2.21	0.41
1:N:94:ILE:HD12	1:N:420:ALA:HB3	2.03	0.41
1:N:168:THR:HB	1:N:170:ASN:HD21	1.82	0.41
1:N:253:ARG:HG3	1:N:255:TYR:HE1	1.86	0.41
1:N:318:CYS:SG	1:N:383:LEU:O	2.79	0.41
1:N:140:ILE:HD13	1:N:140:ILE:HG21	1.80	0.40
2:L:118:PHE:HA	2:L:119:PRO:HD2	1.79	0.40
2:L:167:ASP:O	2:L:171:SER:HA	2.21	0.40
1:N:94:ILE:HG21	1:N:97:TRP:CZ2	2.55	0.40
3:H:109:LEU:HA	3:H:109:LEU:HD12	1.83	0.40
3:H:34:MET:HB2	3:H:51:ILE:HG22	2.02	0.40
1:N:207:TYR:CE2	1:N:259:GLU:HG2	2.57	0.40
1:N:84:PHE:CE1	1:N:187:ARG:HD3	2.56	0.40
2:L:175:MET:HG2	2:L:176:SER:N	2.37	0.40
1:N:427:ILE:O	1:N:428:ARG:HD2	2.21	0.40
1:N:81:ILE:HG13	1:N:83:GLU:N	2.30	0.40

There are no symmetry-related clashes.

5.3 Torsion angles [i](#)

5.3.1 Protein backbone [i](#)

In the following table, the Percentiles column shows the percent Ramachandran outliers of the chain as a percentile score with respect to all X-ray entries followed by that with respect to entries of similar resolution.

The Analysed column shows the number of residues for which the backbone conformation was analysed, and the total number of residues.

Mol	Chain	Analysed	Favoured	Allowed	Outliers	Percentiles	
1	N	387/389 (100%)	352 (91%)	33 (8%)	2 (0%)	29	61
2	L	212/214 (99%)	197 (93%)	14 (7%)	1 (0%)	29	61
3	H	219/221 (99%)	192 (88%)	21 (10%)	6 (3%)	5	19
All	All	818/824 (99%)	741 (91%)	68 (8%)	9 (1%)	14	42

All (9) Ramachandran outliers are listed below:

Mol	Chain	Res	Type
1	N	295	TRP
2	L	60	ASP
3	H	216	SER
3	H	226	ARG
1	N	222	ILE
3	H	43	LYS
3	H	102	TYR
3	H	180	SER
3	H	41	PRO

5.3.2 Protein sidechains [i](#)

In the following table, the Percentiles column shows the percent sidechain outliers of the chain as a percentile score with respect to all X-ray entries followed by that with respect to entries of similar resolution.

The Analysed column shows the number of residues for which the sidechain conformation was analysed, and the total number of residues.

Mol	Chain	Analysed	Rotameric	Outliers	Percentiles	
1	N	341/341 (100%)	303 (89%)	38 (11%)	6	19
2	L	190/190 (100%)	160 (84%)	30 (16%)	2	8
3	H	187/187 (100%)	162 (87%)	25 (13%)	4	11
All	All	718/718 (100%)	625 (87%)	93 (13%)	4	12

All (93) residues with a non-rotameric sidechain are listed below:

Mol	Chain	Res	Type
1	N	81	ILE
1	N	93	THR
1	N	99	ILE
1	N	118	ARG
1	N	127	ASP
1	N	134	LEU
1	N	136	GLN
1	N	140	ILE
1	N	141	ARG
1	N	168	THR
1	N	170	ASN
1	N	181	THR

Continued on next page...

Continued from previous page...

Mol	Chain	Res	Type
1	N	189	ARG
1	N	204	VAL
1	N	224	ARG
1	N	230	CYS
1	N	247	THR
1	N	253	ARG
1	N	269	THR
1	N	283	GLU
1	N	287	VAL
1	N	304	GLN
1	N	311	THR
1	N	313	THR
1	N	330	ASP
1	N	337	CYS
1	N	345	ASN
1	N	362	LEU
1	N	364	ARG
1	N	387	ARG
1	N	388	SER
1	N	391	THR
1	N	395	GLN
1	N	411	MET
1	N	441	ASN
1	N	444	VAL
1	N	445	SER
1	N	446	MET
2	L	2	ILE
2	L	5	THR
2	L	11	MET
2	L	22	THR
2	L	27	GLN
2	L	58	VAL
2	L	60	ASP
2	L	61	ARG
2	L	65	SER
2	L	70	ASP
2	L	77	SER
2	L	81	GLU
2	L	83	LEU
2	L	90	GLN
2	L	105	GLU
2	L	108	ARG

Continued on next page...

Continued from previous page...

Mol	Chain	Res	Type
2	L	122	SER
2	L	142	LYS
2	L	145	ASN
2	L	151	ASP
2	L	157	ASN
2	L	159	VAL
2	L	163	TRP
2	L	170	ASP
2	L	182	THR
2	L	184	ASP
2	L	195	GLU
2	L	197	THR
2	L	202	THR
2	L	203	SER
3	H	43	LYS
3	H	56	GLU
3	H	62	GLU
3	H	71	LEU
3	H	73	THR
3	H	76	SER
3	H	80	LEU
3	H	87	LYS
3	H	89	THR
3	H	108	THR
3	H	113	SER
3	H	133	THR
3	H	134	THR
3	H	140	LEU
3	H	151	PRO
3	H	156	THR
3	H	163	SER
3	H	184	LEU
3	H	194	THR
3	H	198	THR
3	H	202	SER
3	H	209	ASN
3	H	218	LYS
3	H	220	ASP
3	H	224	GLU

Some sidechains can be flipped to improve hydrogen bonding and reduce clashes. All (21) such sidechains are listed below:

Mol	Chain	Res	Type
1	N	95	ASN
1	N	136	GLN
1	N	144	HIS
1	N	170	ASN
1	N	226	GLN
1	N	315	GLN
1	N	345	ASN
1	N	346	ASN
1	N	395	GLN
1	N	441	ASN
1	N	455	GLN
1	N	457	ASN
2	L	27	GLN
2	L	38	GLN
2	L	138	ASN
3	H	6	GLN
3	H	39	GLN
3	H	53	ASN
3	H	82(B)	ASN
3	H	172	HIS
3	H	179	GLN

5.3.3 RNA [i](#)

There are no RNA molecules in this entry.

5.4 Non-standard residues in protein, DNA, RNA chains [i](#)

There are no non-standard protein/DNA/RNA residues in this entry.

5.5 Carbohydrates [i](#)

8 monosaccharides are modelled in this entry.

In the following table, the Counts columns list the number of bonds (or angles) for which Mogul statistics could be retrieved, the number of bonds (or angles) that are observed in the model and the number of bonds (or angles) that are defined in the Chemical Component Dictionary. The Link column lists molecule types, if any, to which the group is linked. The Z score for a bond length (or angle) is the number of standard deviations the observed value is removed from the expected value. A bond length (or angle) with $|Z| > 2$ is considered an outlier worth inspection. RMSZ is the root-mean-square of all Z scores of the bond lengths (or angles).

Mol	Type	Chain	Res	Link	Bond lengths			Bond angles		
					Counts	RMSZ	# Z > 2	Counts	RMSZ	# Z > 2
4	NAG	A	1	1,4	14,14,15	1.03	0	17,19,21	1.40	1 (5%)
4	NAG	A	2	4	14,14,15	0.81	0	17,19,21	1.37	2 (11%)
4	BMA	A	3	4	11,11,12	1.22	1 (9%)	15,15,17	1.61	4 (26%)
4	MAN	A	4	4	11,11,12	1.01	0	15,15,17	1.62	3 (20%)
4	MAN	A	5	4	11,11,12	1.64	1 (9%)	15,15,17	1.08	0
4	MAN	A	6	4	11,11,12	1.45	2 (18%)	15,15,17	2.02	1 (6%)
5	NAG	B	1	1,5	14,14,15	0.80	0	17,19,21	1.80	4 (23%)
5	NAG	B	2	5	14,14,15	1.17	1 (7%)	17,19,21	2.38	4 (23%)

In the following table, the Chirals column lists the number of chiral outliers, the number of chiral centers analysed, the number of these observed in the model and the number defined in the Chemical Component Dictionary. Similar counts are reported in the Torsion and Rings columns. '-' means no outliers of that kind were identified.

Mol	Type	Chain	Res	Link	Chirals	Torsions	Rings
4	NAG	A	1	1,4	-	0/6/23/26	0/1/1/1
4	NAG	A	2	4	-	2/6/23/26	0/1/1/1
4	BMA	A	3	4	-	2/2/19/22	0/1/1/1
4	MAN	A	4	4	-	1/2/19/22	0/1/1/1
4	MAN	A	5	4	-	0/2/19/22	0/1/1/1
4	MAN	A	6	4	-	2/2/19/22	0/1/1/1
5	NAG	B	1	1,5	-	1/6/23/26	0/1/1/1
5	NAG	B	2	5	-	1/6/23/26	0/1/1/1

All (5) bond length outliers are listed below:

Mol	Chain	Res	Type	Atoms	Z	Observed(Å)	Ideal(Å)
4	A	5	MAN	C2-C3	4.40	1.59	1.52
5	B	2	NAG	C1-C2	3.89	1.58	1.52
4	A	3	BMA	C2-C3	2.78	1.56	1.52
4	A	6	MAN	C2-C3	-2.77	1.48	1.52
4	A	6	MAN	O3-C3	-2.18	1.37	1.43

All (19) bond angle outliers are listed below:

Mol	Chain	Res	Type	Atoms	Z	Observed(°)	Ideal(°)
4	A	6	MAN	C1-O5-C5	6.89	121.53	112.19
5	B	2	NAG	C1-C2-N2	5.40	119.71	110.49
5	B	2	NAG	C1-O5-C5	4.63	118.47	112.19

Continued on next page...

Continued from previous page...

Mol	Chain	Res	Type	Atoms	Z	Observed(°)	Ideal(°)
5	B	2	NAG	C2-N2-C7	4.37	129.13	122.90
5	B	1	NAG	C4-C3-C2	-4.19	104.88	111.02
4	A	1	NAG	C1-C2-N2	-3.59	104.36	110.49
4	A	4	MAN	O2-C2-C1	-3.49	102.00	109.15
4	A	2	NAG	C8-C7-N2	3.26	121.62	116.10
5	B	1	NAG	C1-C2-N2	3.21	115.98	110.49
4	A	4	MAN	C1-O5-C5	3.20	116.53	112.19
5	B	1	NAG	C6-C5-C4	2.92	119.85	113.00
4	A	3	BMA	O5-C5-C4	-2.70	104.27	110.83
4	A	3	BMA	O4-C4-C3	-2.58	104.38	110.35
5	B	1	NAG	O5-C1-C2	-2.36	107.55	111.29
4	A	2	NAG	C1-O5-C5	2.31	115.32	112.19
5	B	2	NAG	C3-C4-C5	-2.19	106.34	110.24
4	A	3	BMA	O5-C5-C6	2.17	110.61	107.20
4	A	4	MAN	O3-C3-C4	-2.17	105.33	110.35
4	A	3	BMA	C6-C5-C4	2.15	118.04	113.00

There are no chirality outliers.

All (9) torsion outliers are listed below:

Mol	Chain	Res	Type	Atoms
5	B	2	NAG	C1-C2-N2-C7
5	B	1	NAG	C1-C2-N2-C7
4	A	3	BMA	C4-C5-C6-O6
4	A	2	NAG	O5-C5-C6-O6
4	A	3	BMA	O5-C5-C6-O6
4	A	2	NAG	C4-C5-C6-O6
4	A	6	MAN	C4-C5-C6-O6
4	A	4	MAN	O5-C5-C6-O6
4	A	6	MAN	O5-C5-C6-O6

There are no ring outliers.

No monomer is involved in short contacts.

5.6 Ligand geometry [i](#)

Of 2 ligands modelled in this entry, 1 is monoatomic - leaving 1 for Mogul analysis.

In the following table, the Counts columns list the number of bonds (or angles) for which Mogul statistics could be retrieved, the number of bonds (or angles) that are observed in the model and the number of bonds (or angles) that are defined in the Chemical Component Dictionary. The

Link column lists molecule types, if any, to which the group is linked. The Z score for a bond length (or angle) is the number of standard deviations the observed value is removed from the expected value. A bond length (or angle) with $|Z| > 2$ is considered an outlier worth inspection. RMSZ is the root-mean-square of all Z scores of the bond lengths (or angles).

Mol	Type	Chain	Res	Link	Bond lengths			Bond angles		
					Counts	RMSZ	# Z > 2	Counts	RMSZ	# Z > 2
6	NAG	N	475(A)	1	14,14,15	0.79	0	17,19,21	1.75	2 (11%)

In the following table, the Chirals column lists the number of chiral outliers, the number of chiral centers analysed, the number of these observed in the model and the number defined in the Chemical Component Dictionary. Similar counts are reported in the Torsion and Rings columns. '-' means no outliers of that kind were identified.

Mol	Type	Chain	Res	Link	Chirals	Torsions	Rings
6	NAG	N	475(A)	1	-	0/6/23/26	0/1/1/1

There are no bond length outliers.

All (2) bond angle outliers are listed below:

Mol	Chain	Res	Type	Atoms	Z	Observed(°)	Ideal(°)
6	N	475(A)	NAG	C1-O5-C5	3.77	117.31	112.19
6	N	475(A)	NAG	C8-C7-N2	3.71	122.37	116.10

There are no chirality outliers.

There are no torsion outliers.

There are no ring outliers.

No monomer is involved in short contacts.

5.7 Other polymers [i](#)

There are no such residues in this entry.

5.8 Polymer linkage issues [i](#)

There are no chain breaks in this entry.

6 Fit of model and data

6.1 Protein, DNA and RNA chains

Unable to reproduce the depositors R factor - this section is therefore empty.

6.2 Non-standard residues in protein, DNA, RNA chains

Unable to reproduce the depositors R factor - this section is therefore empty.

6.3 Carbohydrates

Unable to reproduce the depositors R factor - this section is therefore empty.

6.4 Ligands

Unable to reproduce the depositors R factor - this section is therefore empty.

6.5 Other polymers

Unable to reproduce the depositors R factor - this section is therefore empty.