



Full wwPDB X-ray Structure Validation Report ⓘ

Oct 2, 2023 – 02:39 PM EDT

PDB ID : 6ND2
Title : Staphylococcus aureus Dihydrofolate Reductase complexed with NADPH and 6-ETHYL-5-[(3R)-3-[2-METHOXY-5-(PYRIDIN-4-YL)PHENYL]BUT-1-YN-1-YL]PYRIMIDINE-2,4-DIAMINE (UCP1063)
Authors : Reeve, S.M.; Wright, D.L.
Deposited on : 2018-12-13
Resolution : 2.24 Å(reported)

This is a Full wwPDB X-ray Structure Validation Report for a publicly released PDB entry.

We welcome your comments at validation@mail.wwpdb.org

A user guide is available at

<https://www.wwpdb.org/validation/2017/XrayValidationReportHelp>

with specific help available everywhere you see the ⓘ symbol.

The types of validation reports are described at

<http://www.wwpdb.org/validation/2017/FAQs#types>.

The following versions of software and data (see [references ⓘ](#)) were used in the production of this report:

MolProbity : **FAILED**
Mogul : 1.8.5 (274361), CSD as541be (2020)
Xtriage (Phenix) : 1.13
EDS : **FAILED**
buster-report : 1.1.7 (2018)
Percentile statistics : 20191225.v01 (using entries in the PDB archive December 25th 2019)
Ideal geometry (proteins) : Engh & Huber (2001)
Ideal geometry (DNA, RNA) : Parkinson et al. (1996)
Validation Pipeline (wwPDB-VP) : 2.35.1

1 Overall quality at a glance

The following experimental techniques were used to determine the structure:

X-RAY DIFFRACTION

The reported resolution of this entry is 2.24 Å.

There are no overall percentile quality scores available for this entry.

MolProbity and EDS failed to run properly - the sequence quality summary graphics cannot be shown.

The following table lists non-polymeric compounds, carbohydrate monomers and non-standard residues in protein, DNA, RNA chains that are outliers for geometric or electron-density-fit criteria:

Mol	Type	Chain	Res	Chirality	Geometry	Clashes	Electron density
4	XNP	X	203	X	-	-	-

2 Entry composition [i](#)

There are 5 unique types of molecules in this entry. The entry contains 1402 atoms, of which 0 are hydrogens and 0 are deuteriums.

In the tables below, the ZeroOcc column contains the number of atoms modelled with zero occupancy, the AltConf column contains the number of residues with at least one atom in alternate conformation and the Trace column contains the number of residues modelled with at most 2 atoms.

- Molecule 1 is a protein called Dihydrofolate reductase.

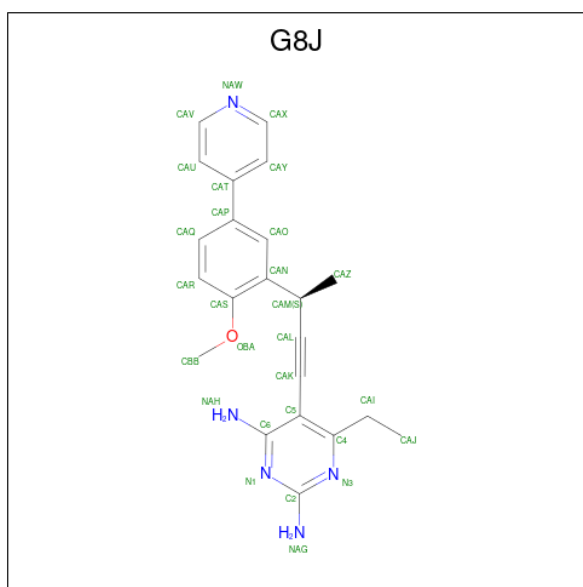
Mol	Chain	Residues	Atoms					ZeroOcc	AltConf	Trace
			Total	C	N	O	S			
1	X	157	1283	829	215	236	3	0	2	0

- Molecule 2 is GLYCEROL (three-letter code: GOL) (formula: C₃H₈O₃).



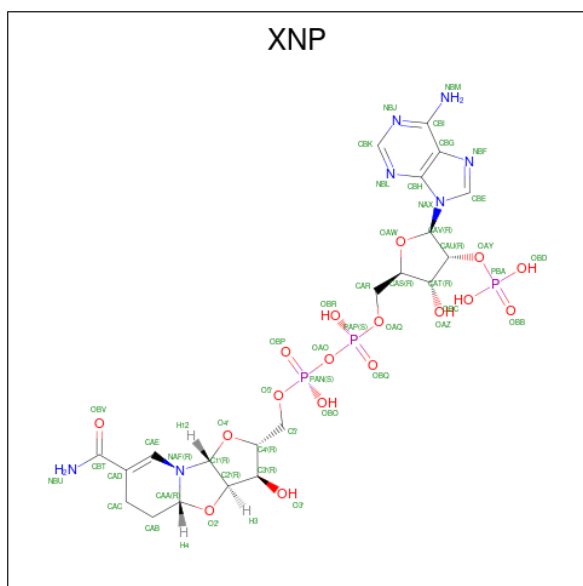
Mol	Chain	Residues	Atoms			ZeroOcc	AltConf
			Total	C	O		
2	X	1	6	3	3	0	0

- Molecule 3 is 6-ethyl-5-((3S)-3-[2-methoxy-5-(pyridin-4-yl)phenyl]but-1-yn-1-yl)pyrimidine-2,4-diamine (three-letter code: G8J) (formula: C₂₂H₂₃N₅O).



Mol	Chain	Residues	Atoms				ZeroOcc	AltConf
			Total	C	N	O		
3	X	1	28	22	5	1	0	0

- Molecule 4 is Tricyclic NADPH (three-letter code: XNP) (formula: C₂₁H₃₀N₇O₁₇P₃).



Mol	Chain	Residues	Atoms				ZeroOcc	AltConf	
			Total	C	N	O			P
4	X	1	48	21	7	17	3	0	0

- Molecule 5 is water.

Mol	Chain	Residues	Atoms	ZeroOcc	AltConf
5	X	37	Total O 37 37	0	0

MolProbity and EDS failed to run properly - this section is therefore empty.

3 Data and refinement statistics

EDS failed to run properly - this section is therefore incomplete.

Property	Value	Source
Space group	P 61 2 2	Depositor
Cell constants a, b, c, α , β , γ	78.88Å 78.88Å 107.91Å 90.00° 90.00° 120.00°	Depositor
Resolution (Å)	39.44 – 2.24	Depositor
% Data completeness (in resolution range)	96.8 (39.44-2.24)	Depositor
R_{merge}	0.15	Depositor
R_{sym}	(Not available)	Depositor
$\langle I/\sigma(I) \rangle$ ¹	2.02 (at 2.24Å)	Xtrriage
Refinement program	PHENIX (1.11.1_2575: ???)	Depositor
R, R_{free}	0.185 , 0.235	Depositor
Wilson B-factor (Å ²)	32.6	Xtrriage
Anisotropy	0.562	Xtrriage
L-test for twinning ²	$\langle L \rangle = 0.51$, $\langle L^2 \rangle = 0.35$	Xtrriage
Estimated twinning fraction	No twinning to report.	Xtrriage
Total number of atoms	1402	wwPDB-VP
Average B, all atoms (Å ²)	33.0	wwPDB-VP

Xtrriage's analysis on translational NCS is as follows: *The largest off-origin peak in the Patterson function is 6.42% of the height of the origin peak. No significant pseudotranslation is detected.*

¹Intensities estimated from amplitudes.

²Theoretical values of $\langle |L| \rangle$, $\langle L^2 \rangle$ for acentric reflections are 0.5, 0.333 respectively for untwinned datasets, and 0.375, 0.2 for perfectly twinned datasets.

4 Model quality [i](#)

4.1 Standard geometry [i](#)

MolProbity failed to run properly - this section is therefore empty.

4.2 Too-close contacts [i](#)

MolProbity failed to run properly - this section is therefore empty.

4.3 Torsion angles [i](#)

4.3.1 Protein backbone [i](#)

MolProbity failed to run properly - this section is therefore empty.

4.3.2 Protein sidechains [i](#)

MolProbity failed to run properly - this section is therefore empty.

4.3.3 RNA [i](#)

MolProbity failed to run properly - this section is therefore empty.

4.4 Non-standard residues in protein, DNA, RNA chains [i](#)

There are no non-standard protein/DNA/RNA residues in this entry.

4.5 Carbohydrates [i](#)

There are no monosaccharides in this entry.

4.6 Ligand geometry [i](#)

3 ligands are modelled in this entry.

In the following table, the Counts columns list the number of bonds (or angles) for which Mogul statistics could be retrieved, the number of bonds (or angles) that are observed in the model and the number of bonds (or angles) that are defined in the Chemical Component Dictionary. The Link column lists molecule types, if any, to which the group is linked. The Z score for a bond

length (or angle) is the number of standard deviations the observed value is removed from the expected value. A bond length (or angle) with $|Z| > 2$ is considered an outlier worth inspection. RMSZ is the root-mean-square of all Z scores of the bond lengths (or angles).

Mol	Type	Chain	Res	Link	Bond lengths			Bond angles		
					Counts	RMSZ	# Z > 2	Counts	RMSZ	# Z > 2
3	G8J	X	202	-	28,30,30	3.54	4 (14%)	36,41,41	1.97	12 (33%)
4	XNP	X	203	-	47,53,53	2.14	13 (27%)	51,83,83	3.18	13 (25%)
2	GOL	X	201	-	5,5,5	0.26	0	5,5,5	0.42	0

In the following table, the Chirals column lists the number of chiral outliers, the number of chiral centers analysed, the number of these observed in the model and the number defined in the Chemical Component Dictionary. Similar counts are reported in the Torsion and Rings columns. '-' means no outliers of that kind were identified.

Mol	Type	Chain	Res	Link	Chirals	Torsions	Rings
4	XNP	X	203	-	4/4/15/16	6/26/84/84	0/6/6/6
2	GOL	X	201	-	-	2/4/4/4	-
3	G8J	X	202	-	-	3/14/17/17	0/3/3/3

All (17) bond length outliers are listed below:

Mol	Chain	Res	Type	Atoms	Z	Observed(Å)	Ideal(Å)
3	X	202	G8J	CAK-CAL	16.53	1.36	1.19
3	X	202	G8J	CAI-C4	-7.00	1.39	1.51
4	X	203	XNP	CBK-NBL	5.61	1.41	1.32
4	X	203	XNP	PBA-OAY	5.04	1.68	1.59
4	X	203	XNP	CAC-CAD	-4.98	1.41	1.50
4	X	203	XNP	CBT-CAD	-4.40	1.39	1.48
4	X	203	XNP	CBK-NBJ	3.95	1.41	1.33
4	X	203	XNP	O2'-CAA	3.83	1.50	1.42
4	X	203	XNP	C3'-C2'	-3.55	1.45	1.52
4	X	203	XNP	PAN-OBP	3.23	1.62	1.50
3	X	202	G8J	CAT-CAP	-2.79	1.42	1.49
3	X	202	G8J	CAV-NAW	2.58	1.41	1.33
4	X	203	XNP	CBI-CBG	-2.58	1.33	1.43
4	X	203	XNP	CBG-CBH	-2.19	1.35	1.40
4	X	203	XNP	OAW-CAV	-2.17	1.38	1.41
4	X	203	XNP	PBA-OBP	2.14	1.63	1.54
4	X	203	XNP	OAW-CAS	2.07	1.49	1.45

All (25) bond angle outliers are listed below:

Mol	Chain	Res	Type	Atoms	Z	Observed(°)	Ideal(°)
4	X	203	XNP	C2'-C1'-NAF	-11.38	89.33	101.16
4	X	203	XNP	CAT-CAU-CAV	-9.91	84.26	102.89
4	X	203	XNP	O4'-C1'-C2'	-7.45	93.51	106.57
4	X	203	XNP	C2'-O2'-CAA	-7.03	88.16	108.68
4	X	203	XNP	CAV-NAX-CBH	6.68	138.37	126.64
4	X	203	XNP	NBL-CBK-NBJ	-6.08	119.18	128.68
3	X	202	G8J	C2-N3-C4	5.76	121.05	116.24
4	X	203	XNP	O2'-CAA-CAB	4.32	121.69	112.24
4	X	203	XNP	C4'-O4'-C1'	-4.09	100.46	109.47
3	X	202	G8J	CAI-C4-C5	-3.65	120.06	122.66
4	X	203	XNP	C2'-C3'-C4'	-3.25	94.94	101.99
3	X	202	G8J	NAH-C6-N1	3.06	121.35	117.03
3	X	202	G8J	C2-N1-C6	2.98	120.28	116.99
4	X	203	XNP	OAW-CAV-CAU	-2.91	101.53	106.59
3	X	202	G8J	CAZ-CAM-CAN	-2.89	105.94	112.28
3	X	202	G8J	C6-C5-CAK	2.88	123.57	118.57
3	X	202	G8J	N3-C2-N1	-2.80	121.02	125.42
3	X	202	G8J	CBB-OBA-CAS	-2.80	113.31	117.53
3	X	202	G8J	C5-C6-NAH	-2.40	118.85	121.62
3	X	202	G8J	CAY-CAX-NAW	-2.39	119.45	123.62
4	X	203	XNP	CAR-CAS-CAT	-2.35	106.39	115.18
4	X	203	XNP	CBG-CBI-NBM	-2.21	116.99	120.35
4	X	203	XNP	O5'-C5'-C4'	-2.17	101.52	108.99
3	X	202	G8J	CAX-CAY-CAT	2.08	122.68	119.57
3	X	202	G8J	CAJ-CAI-C4	-2.06	109.81	114.88

All (4) chirality outliers are listed below:

Mol	Chain	Res	Type	Atom
4	X	203	XNP	C2'
4	X	203	XNP	C4'
4	X	203	XNP	C1'
4	X	203	XNP	CAV

All (11) torsion outliers are listed below:

Mol	Chain	Res	Type	Atoms
2	X	201	GOL	O1-C1-C2-C3
4	X	203	XNP	C3'-C4'-C5'-O5'
4	X	203	XNP	C4'-C5'-O5'-PAN
4	X	203	XNP	O4'-C4'-C5'-O5'
2	X	201	GOL	O1-C1-C2-O2
4	X	203	XNP	CAV-CAU-OAY-PBA

Continued on next page...

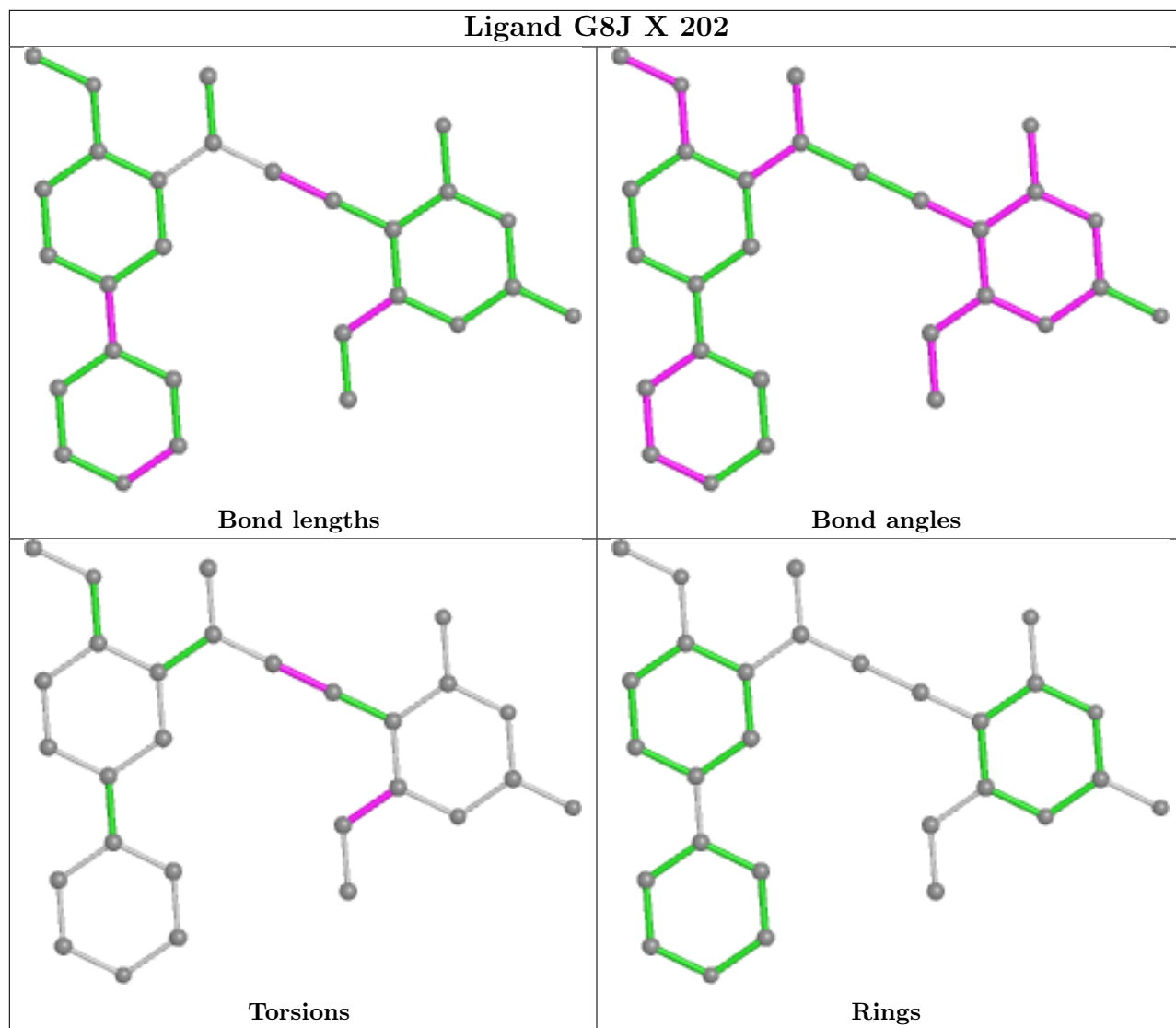
Continued from previous page...

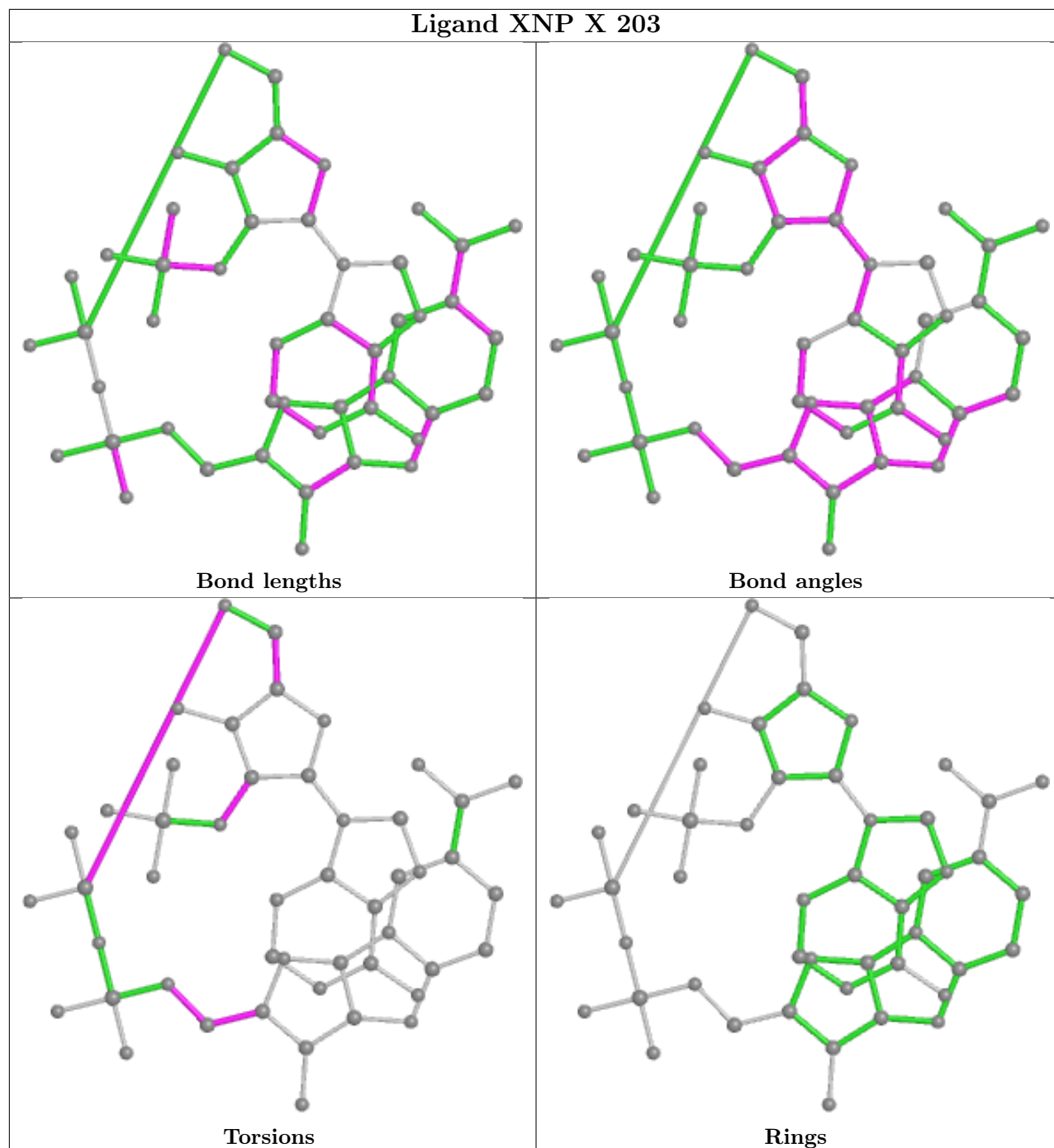
Mol	Chain	Res	Type	Atoms
3	X	202	G8J	C5-CAK-CAL-CAM
3	X	202	G8J	C5-C4-CAI-CAJ
3	X	202	G8J	N3-C4-CAI-CAJ
4	X	203	XNP	CAR-OAQ-PAP-OAO
4	X	203	XNP	OAQ-CAR-CAS-CAT

There are no ring outliers.

No monomer is involved in short contacts.

The following is a two-dimensional graphical depiction of Mogul quality analysis of bond lengths, bond angles, torsion angles, and ring geometry for all instances of the Ligand of Interest. In addition, ligands with molecular weight > 250 and outliers as shown on the validation Tables will also be included. For torsion angles, if less than 5% of the Mogul distribution of torsion angles is within 10 degrees of the torsion angle in question, then that torsion angle is considered an outlier. Any bond that is central to one or more torsion angles identified as an outlier by Mogul will be highlighted in the graph. For rings, the root-mean-square deviation (RMSD) between the ring in question and similar rings identified by Mogul is calculated over all ring torsion angles. If the average RMSD is greater than 60 degrees and the minimal RMSD between the ring in question and any Mogul-identified rings is also greater than 60 degrees, then that ring is considered an outlier. The outliers are highlighted in purple. The color gray indicates Mogul did not find sufficient equivalents in the CSD to analyse the geometry.





4.7 Other polymers [i](#)

There are no such residues in this entry.

4.8 Polymer linkage issues [i](#)

There are no chain breaks in this entry.

5 Fit of model and data

5.1 Protein, DNA and RNA chains

EDS failed to run properly - this section is therefore empty.

5.2 Non-standard residues in protein, DNA, RNA chains

EDS failed to run properly - this section is therefore empty.

5.3 Carbohydrates

EDS failed to run properly - this section is therefore empty.

5.4 Ligands

EDS failed to run properly - this section is therefore empty.

5.5 Other polymers

EDS failed to run properly - this section is therefore empty.