



Full wwPDB X-ray Structure Validation Report ⓘ

Oct 2, 2023 – 03:49 PM EDT

PDB ID : 6NDZ
Title : Designed repeat protein in complex with Fz8
Authors : Miao, Y.; Jude, K.M.; Garcia, K.C.
Deposited on : 2018-12-14
Resolution : 2.26 Å(reported)

This is a Full wwPDB X-ray Structure Validation Report for a publicly released PDB entry.

We welcome your comments at validation@mail.wwpdb.org

A user guide is available at

<https://www.wwpdb.org/validation/2017/XrayValidationReportHelp>

with specific help available everywhere you see the ⓘ symbol.

The types of validation reports are described at

<http://www.wwpdb.org/validation/2017/FAQs#types>.

The following versions of software and data (see [references ⓘ](#)) were used in the production of this report:

MolProbity : **FAILED**
Mogul : 1.8.5 (274361), CSD as541be (2020)
Xtrriage (Phenix) : 1.13
EDS : **FAILED**
Percentile statistics : 20191225.v01 (using entries in the PDB archive December 25th 2019)
Ideal geometry (proteins) : Engh & Huber (2001)
Ideal geometry (DNA, RNA) : Parkinson et al. (1996)
Validation Pipeline (wwPDB-VP) : 2.35.1

1 Overall quality at a glance

The following experimental techniques were used to determine the structure:

X-RAY DIFFRACTION

The reported resolution of this entry is 2.26 Å.

There are no overall percentile quality scores available for this entry.

MolProbity and EDS failed to run properly - the sequence quality summary graphics cannot be shown.

The following table lists non-polymeric compounds, carbohydrate monomers and non-standard residues in protein, DNA, RNA chains that are outliers for geometric or electron-density-fit criteria:

Mol	Type	Chain	Res	Chirality	Geometry	Clashes	Electron density
3	MPD	B	203	-	X	-	-

2 Entry composition

There are 6 unique types of molecules in this entry. The entry contains 7282 atoms, of which 0 are hydrogens and 0 are deuteriums.

In the tables below, the ZeroOcc column contains the number of atoms modelled with zero occupancy, the AltConf column contains the number of residues with at least one atom in alternate conformation and the Trace column contains the number of residues modelled with at most 2 atoms.

- Molecule 1 is a protein called Frizzled-8.

Mol	Chain	Residues	Atoms					ZeroOcc	AltConf	Trace
			Total	C	N	O	S			
1	A	122	983	623	168	177	15	0	0	0
1	C	120	964	612	163	174	15	0	0	0
1	E	120	964	612	163	174	15	0	0	0

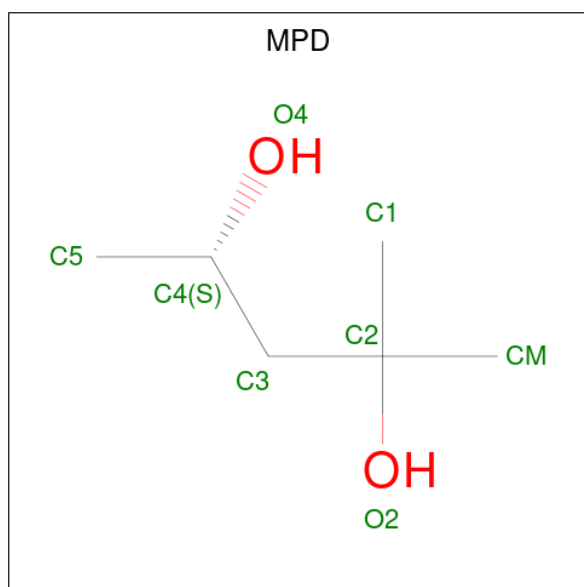
There are 21 discrepancies between the modelled and reference sequences:

Chain	Residue	Modelled	Actual	Comment	Reference
A	22	GLN	ASN	engineered mutation	UNP Q9H461
A	124	HIS	-	expression tag	UNP Q9H461
A	125	HIS	-	expression tag	UNP Q9H461
A	126	HIS	-	expression tag	UNP Q9H461
A	127	HIS	-	expression tag	UNP Q9H461
A	128	HIS	-	expression tag	UNP Q9H461
A	129	HIS	-	expression tag	UNP Q9H461
C	22	GLN	ASN	engineered mutation	UNP Q9H461
C	124	HIS	-	expression tag	UNP Q9H461
C	125	HIS	-	expression tag	UNP Q9H461
C	126	HIS	-	expression tag	UNP Q9H461
C	127	HIS	-	expression tag	UNP Q9H461
C	128	HIS	-	expression tag	UNP Q9H461
C	129	HIS	-	expression tag	UNP Q9H461
E	22	GLN	ASN	engineered mutation	UNP Q9H461
E	124	HIS	-	expression tag	UNP Q9H461
E	125	HIS	-	expression tag	UNP Q9H461
E	126	HIS	-	expression tag	UNP Q9H461
E	127	HIS	-	expression tag	UNP Q9H461
E	128	HIS	-	expression tag	UNP Q9H461
E	129	HIS	-	expression tag	UNP Q9H461

- Molecule 2 is a protein called Designed repeat binding protein.

Mol	Chain	Residues	Atoms					ZeroOcc	AltConf	Trace
2	B	190	Total	C	N	O	S	0	0	0
			1371	851	252	263	5			
2	D	190	Total	C	N	O	S	0	0	0
			1367	848	251	263	5			
2	F	189	Total	C	N	O	S	0	0	0
			1362	846	250	261	5			

- Molecule 3 is (4S)-2-METHYL-2,4-PENTANEDIOL (three-letter code: MPD) (formula: C₆H₁₄O₂).



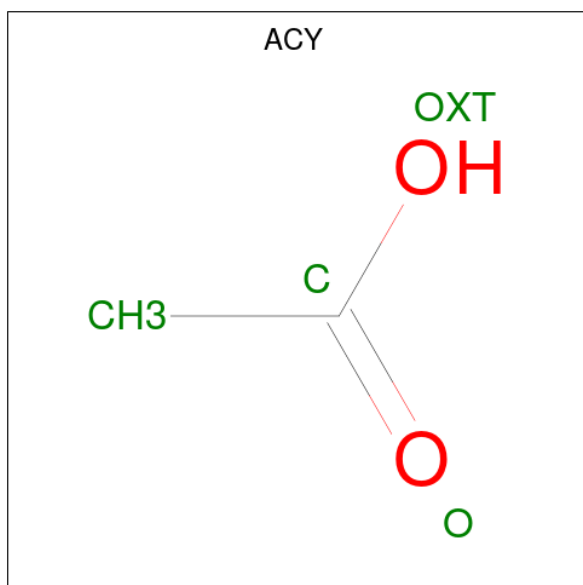
Mol	Chain	Residues	Atoms			ZeroOcc	AltConf
3	A	1	Total	C	O	0	0
			8	6	2		
3	B	1	Total	C	O	0	0
			8	6	2		
3	B	1	Total	C	O	0	0
			8	6	2		
3	B	1	Total	C	O	0	0
			8	6	2		

- Molecule 4 is ACETATE ION (three-letter code: ACT) (formula: C₂H₃O₂).



Mol	Chain	Residues	Atoms	ZeroOcc	AltConf
4	A	1	Total C O 4 2 2	0	0
4	A	1	Total C O 4 2 2	0	0
4	A	1	Total C O 4 2 2	0	0
4	C	1	Total C O 4 2 2	0	0

- Molecule 5 is ACETIC ACID (three-letter code: ACY) (formula: C₂H₄O₂).



Mol	Chain	Residues	Atoms			ZeroOcc	AltConf
5	A	1	Total	C	O	0	0
			4	2	2		
5	F	1	Total	C	O	0	0
			4	2	2		

- Molecule 6 is water.

Mol	Chain	Residues	Atoms		ZeroOcc	AltConf
6	A	59	Total	O	0	0
			59	59		
6	B	47	Total	O	0	0
			47	47		
6	C	39	Total	O	0	0
			39	39		
6	D	9	Total	O	0	0
			9	9		
6	E	42	Total	O	0	0
			42	42		
6	F	19	Total	O	0	0
			19	19		

MolProbity and EDS failed to run properly - this section is therefore empty.

3 Data and refinement statistics i

EDS failed to run properly - this section is therefore incomplete.

Property	Value	Source
Space group	P 21 21 21	Depositor
Cell constants a, b, c, α , β , γ	79.93Å 109.02Å 114.37Å 90.00° 90.00° 90.00°	Depositor
Resolution (Å)	42.78 – 2.26	Depositor
% Data completeness (in resolution range)	94.2 (42.78-2.26)	Depositor
R_{merge}	0.11	Depositor
R_{sym}	(Not available)	Depositor
$\langle I/\sigma(I) \rangle$ ¹	2.07 (at 2.27Å)	Xtrriage
Refinement program	PHENIX (1.14_3260: ???)	Depositor
R, R_{free}	0.212 , 0.238	Depositor
Wilson B-factor (Å ²)	54.6	Xtrriage
Anisotropy	0.320	Xtrriage
L-test for twinning ²	$\langle L \rangle = 0.49$, $\langle L^2 \rangle = 0.32$	Xtrriage
Estimated twinning fraction	0.018 for -h,l,k	Xtrriage
Total number of atoms	7282	wwPDB-VP
Average B, all atoms (Å ²)	73.0	wwPDB-VP

Xtrriage's analysis on translational NCS is as follows: *The largest off-origin peak in the Patterson function is 4.21% of the height of the origin peak. No significant pseudotranslation is detected.*

¹Intensities estimated from amplitudes.

²Theoretical values of $\langle |L| \rangle$, $\langle L^2 \rangle$ for acentric reflections are 0.5, 0.333 respectively for untwinned datasets, and 0.375, 0.2 for perfectly twinned datasets.

4 Model quality [i](#)

4.1 Standard geometry [i](#)

MolProbity failed to run properly - this section is therefore empty.

4.2 Too-close contacts [i](#)

MolProbity failed to run properly - this section is therefore empty.

4.3 Torsion angles [i](#)

4.3.1 Protein backbone [i](#)

MolProbity failed to run properly - this section is therefore empty.

4.3.2 Protein sidechains [i](#)

MolProbity failed to run properly - this section is therefore empty.

4.3.3 RNA [i](#)

MolProbity failed to run properly - this section is therefore empty.

4.4 Non-standard residues in protein, DNA, RNA chains [i](#)

There are no non-standard protein/DNA/RNA residues in this entry.

4.5 Carbohydrates [i](#)

There are no monosaccharides in this entry.

4.6 Ligand geometry [i](#)

10 ligands are modelled in this entry.

In the following table, the Counts columns list the number of bonds (or angles) for which Mogul statistics could be retrieved, the number of bonds (or angles) that are observed in the model and the number of bonds (or angles) that are defined in the Chemical Component Dictionary. The Link column lists molecule types, if any, to which the group is linked. The Z score for a bond

length (or angle) is the number of standard deviations the observed value is removed from the expected value. A bond length (or angle) with $|Z| > 2$ is considered an outlier worth inspection. RMSZ is the root-mean-square of all Z scores of the bond lengths (or angles).

Mol	Type	Chain	Res	Link	Bond lengths			Bond angles		
					Counts	RMSZ	# Z > 2	Counts	RMSZ	# Z > 2
3	MPD	A	201	-	7,7,7	0.29	0	9,10,10	0.20	0
4	ACT	C	201	-	3,3,3	1.21	0	3,3,3	1.38	0
5	ACY	A	205	-	3,3,3	1.44	0	3,3,3	1.68	1 (33%)
3	MPD	B	203	-	7,7,7	0.34	0	9,10,10	7.57	6 (66%)
4	ACT	A	203	-	3,3,3	1.30	0	3,3,3	1.38	0
3	MPD	B	202	-	7,7,7	0.25	0	9,10,10	0.27	0
5	ACY	F	201	-	3,3,3	1.47	0	3,3,3	1.71	1 (33%)
4	ACT	A	202	-	3,3,3	1.29	0	3,3,3	1.33	0
3	MPD	B	201	-	7,7,7	0.27	0	9,10,10	0.18	0
4	ACT	A	204	-	3,3,3	1.29	0	3,3,3	1.39	0

In the following table, the Chirals column lists the number of chiral outliers, the number of chiral centers analysed, the number of these observed in the model and the number defined in the Chemical Component Dictionary. Similar counts are reported in the Torsion and Rings columns. '-' means no outliers of that kind were identified.

Mol	Type	Chain	Res	Link	Chirals	Torsions	Rings
3	MPD	B	203	-	-	3/5/5/5	-
3	MPD	B	202	-	-	0/5/5/5	-
3	MPD	B	201	-	-	1/5/5/5	-
3	MPD	A	201	-	-	0/5/5/5	-

There are no bond length outliers.

All (8) bond angle outliers are listed below:

Mol	Chain	Res	Type	Atoms	Z	Observed(°)	Ideal(°)
3	B	203	MPD	CM-C2-C1	15.09	142.02	110.57
3	B	203	MPD	O2-C2-CM	-11.65	70.70	108.08
3	B	203	MPD	O2-C2-C1	-11.38	71.55	108.08
3	B	203	MPD	O2-C2-C3	2.94	120.84	109.80
3	B	203	MPD	CM-C2-C3	-2.63	97.71	109.96
3	B	203	MPD	C1-C2-C3	-2.59	97.88	109.96
5	F	201	ACY	O-C-CH3	-2.36	113.15	122.33
5	A	205	ACY	O-C-CH3	-2.32	113.29	122.33

There are no chirality outliers.

All (4) torsion outliers are listed below:

Mol	Chain	Res	Type	Atoms
3	B	201	MPD	O2-C2-C3-C4
3	B	203	MPD	CM-C2-C3-C4
3	B	203	MPD	C2-C3-C4-C5
3	B	203	MPD	C2-C3-C4-O4

There are no ring outliers.

No monomer is involved in short contacts.

4.7 Other polymers [i](#)

There are no such residues in this entry.

4.8 Polymer linkage issues [i](#)

There are no chain breaks in this entry.

5 Fit of model and data [i](#)

5.1 Protein, DNA and RNA chains [i](#)

EDS failed to run properly - this section is therefore empty.

5.2 Non-standard residues in protein, DNA, RNA chains [i](#)

EDS failed to run properly - this section is therefore empty.

5.3 Carbohydrates [i](#)

EDS failed to run properly - this section is therefore empty.

5.4 Ligands [i](#)

EDS failed to run properly - this section is therefore empty.

5.5 Other polymers [i](#)

EDS failed to run properly - this section is therefore empty.