



Full wwPDB X-ray Structure Validation Report ⓘ

Oct 2, 2023 – 03:09 AM EDT

PDB ID : 6NH5
Title : Structure of human endothelial nitric oxide synthase heme domain in complex with 6-(3-fluoro-5-(2-((2R,4S)-4-fluoro-1-methylpyrrolidin-2-yl)ethyl)phenethyl)-4-methylpyridin-2-amine
Authors : Chreifi, G.; Li, H.; Poulos, T.L.
Deposited on : 2018-12-21
Resolution : 1.96 Å(reported)

This is a Full wwPDB X-ray Structure Validation Report for a publicly released PDB entry.

We welcome your comments at validation@mail.wwpdb.org

A user guide is available at

<https://www.wwpdb.org/validation/2017/XrayValidationReportHelp>

with specific help available everywhere you see the ⓘ symbol.

The types of validation reports are described at

<http://www.wwpdb.org/validation/2017/FAQs#types>.

The following versions of software and data (see [references ⓘ](#)) were used in the production of this report:

MolProbity : **FAILED**
Mogul : 1.8.5 (274361), CSD as541be (2020)
Xtriage (Phenix) : 1.13
EDS : **FAILED**
buster-report : 1.1.7 (2018)
Percentile statistics : 20191225.v01 (using entries in the PDB archive December 25th 2019)
Ideal geometry (proteins) : Engh & Huber (2001)
Ideal geometry (DNA, RNA) : Parkinson et al. (1996)
Validation Pipeline (wwPDB-VP) : 2.35.1

1 Overall quality at a glance

The following experimental techniques were used to determine the structure:

X-RAY DIFFRACTION

The reported resolution of this entry is 1.96 Å.

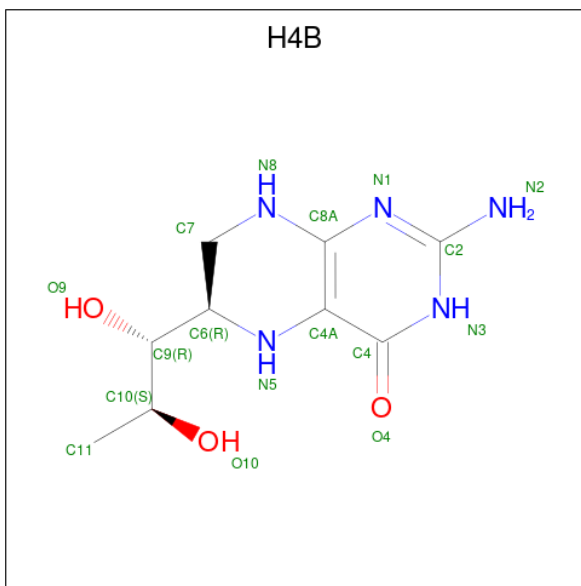
There are no overall percentile quality scores available for this entry.

MolProbity and EDS failed to run properly - the sequence quality summary graphics cannot be shown.

Continued from previous page...

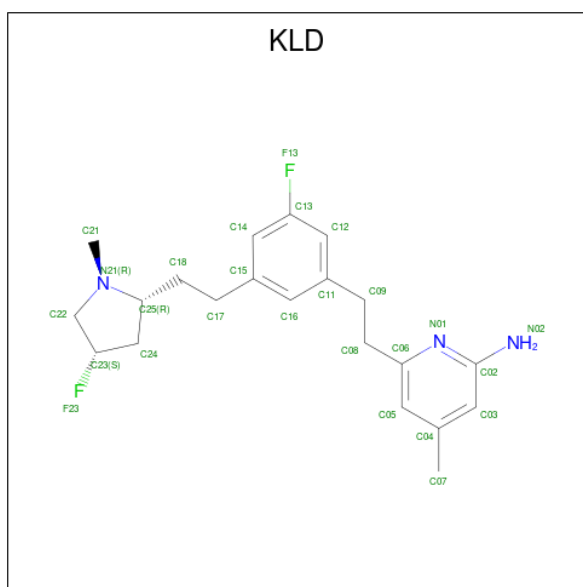
Mol	Chain	Residues	Atoms				ZeroOcc	AltConf	
2	C	1	Total	C	Fe	N	O	0	0
			43	34	1	4	4		
2	D	1	Total	C	Fe	N	O	0	0
			43	34	1	4	4		

- Molecule 3 is 5,6,7,8-TETRAHYDROBIOPTERIN (three-letter code: H4B) (formula: $C_9H_{15}N_5O_3$).



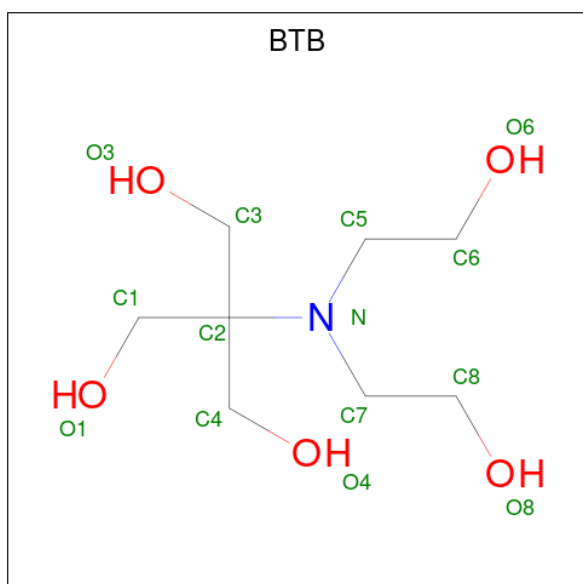
Mol	Chain	Residues	Atoms				ZeroOcc	AltConf
3	A	1	Total	C	N	O	0	0
			17	9	5	3		
3	B	1	Total	C	N	O	0	0
			17	9	5	3		
3	C	1	Total	C	N	O	0	0
			17	9	5	3		
3	C	1	Total	C	N	O	0	0
			17	9	5	3		

- Molecule 4 is 6-[2-(3-fluoro-5-{2-[(2R,4S)-4-fluoro-1-methylpyrrolidin-2-yl]ethyl}phenyl)ethyl]-4-methylpyridin-2-amine (three-letter code: KLD) (formula: $C_{21}H_{27}F_2N_3$).



Mol	Chain	Residues	Atoms				ZeroOcc	AltConf
			Total	C	F	N		
4	A	1	Total	C	F	N	0	0
			26	21	2	3		
4	B	1	Total	C	F	N	0	0
			26	21	2	3		
4	C	1	Total	C	F	N	0	0
			26	21	2	3		
4	D	1	Total	C	F	N	0	0
			26	21	2	3		

- Molecule 5 is 2-[BIS-(2-HYDROXY-ETHYL)-AMINO]-2-HYDROXYMETHYL-PROPAN E-1,3-DIOL (three-letter code: BTB) (formula: C₈H₁₉NO₅).



Mol	Chain	Residues	Atoms				ZeroOcc	AltConf
5	A	1	Total	C	N	O	0	0
			14	8	1	5		
5	A	1	Total	C	N	O	0	0
			14	8	1	5		
5	A	1	Total	C	N	O	0	0
			14	8	1	5		
5	A	1	Total	C	N	O	0	0
			14	8	1	5		
5	B	1	Total	C	N	O	0	0
			14	8	1	5		
5	B	1	Total	C	N	O	0	0
			14	8	1	5		
5	B	1	Total	C	N	O	0	0
			14	8	1	5		
5	B	1	Total	C	N	O	0	0
			14	8	1	5		
5	C	1	Total	C	N	O	0	0
			14	8	1	5		
5	C	1	Total	C	N	O	0	0
			14	8	1	5		
5	D	1	Total	C	N	O	0	0
			14	8	1	5		
5	D	1	Total	C	N	O	0	0
			14	8	1	5		
5	D	1	Total	C	N	O	0	0
			14	8	1	5		

- Molecule 6 is ZINC ION (three-letter code: ZN) (formula: Zn).

Mol	Chain	Residues	Atoms		ZeroOcc	AltConf
6	A	2	Total	Zn	0	0
			2	2		
6	C	2	Total	Zn	0	0
			2	2		

- Molecule 7 is GLYCEROL (three-letter code: GOL) (formula: C₃H₈O₃).



Mol	Chain	Residues	Atoms	ZeroOcc	AltConf
7	A	1	Total C O 6 3 3	0	0
7	C	1	Total C O 6 3 3	0	0

- Molecule 8 is CHLORIDE ION (three-letter code: CL) (formula: Cl).

Mol	Chain	Residues	Atoms	ZeroOcc	AltConf
8	A	1	Total Cl 1 1	0	0
8	B	1	Total Cl 1 1	0	0
8	C	1	Total Cl 1 1	0	0
8	D	1	Total Cl 1 1	0	0

- Molecule 9 is GADOLINIUM ATOM (three-letter code: GD) (formula: Gd).

Mol	Chain	Residues	Atoms	ZeroOcc	AltConf
9	B	1	Total Gd 1 1	0	0
9	D	1	Total Gd 1 1	0	0

- Molecule 10 is water.

Mol	Chain	Residues	Atoms		ZeroOcc	AltConf
10	A	102	Total 102	O 102	0	0
10	B	183	Total 183	O 183	0	0
10	C	128	Total 128	O 128	0	0
10	D	195	Total 195	O 195	0	0

MolProbity and EDS failed to run properly - this section is therefore empty.

3 Data and refinement statistics i

EDS failed to run properly - this section is therefore incomplete.

Property	Value	Source
Space group	P 1 21 1	Depositor
Cell constants a, b, c, α , β , γ	59.53Å 152.76Å 108.98Å 90.00° 90.76° 90.00°	Depositor
Resolution (Å)	88.71 – 1.96	Depositor
% Data completeness (in resolution range)	98.6 (88.71-1.96)	Depositor
R_{merge}	0.13	Depositor
R_{sym}	0.13	Depositor
$\langle I/\sigma(I) \rangle$ ¹	1.31 (at 1.95Å)	Xtrriage
Refinement program	PHENIX 1.11.1-2575_1496	Depositor
R, R_{free}	0.197 , 0.241	Depositor
Wilson B-factor (Å ²)	30.3	Xtrriage
Anisotropy	0.865	Xtrriage
L-test for twinning ²	$\langle L \rangle = 0.49$, $\langle L^2 \rangle = 0.32$	Xtrriage
Estimated twinning fraction	0.085 for h,-k,-l	Xtrriage
Total number of atoms	14078	wwPDB-VP
Average B, all atoms (Å ²)	54.0	wwPDB-VP

Xtrriage's analysis on translational NCS is as follows: *The largest off-origin peak in the Patterson function is 3.71% of the height of the origin peak. No significant pseudotranslation is detected.*

¹ Intensities estimated from amplitudes.

² Theoretical values of $\langle |L| \rangle$, $\langle L^2 \rangle$ for acentric reflections are 0.5, 0.333 respectively for untwinned datasets, and 0.375, 0.2 for perfectly twinned datasets.

4 Model quality [i](#)

4.1 Standard geometry [i](#)

MolProbity failed to run properly - this section is therefore empty.

4.2 Too-close contacts [i](#)

MolProbity failed to run properly - this section is therefore empty.

4.3 Torsion angles [i](#)

4.3.1 Protein backbone [i](#)

MolProbity failed to run properly - this section is therefore empty.

4.3.2 Protein sidechains [i](#)

MolProbity failed to run properly - this section is therefore empty.

4.3.3 RNA [i](#)

MolProbity failed to run properly - this section is therefore empty.

4.4 Non-standard residues in protein, DNA, RNA chains [i](#)

There are no non-standard protein/DNA/RNA residues in this entry.

4.5 Carbohydrates [i](#)

There are no monosaccharides in this entry.

4.6 Ligand geometry [i](#)

Of 37 ligands modelled in this entry, 10 are monoatomic - leaving 27 for Mogul analysis.

In the following table, the Counts columns list the number of bonds (or angles) for which Mogul statistics could be retrieved, the number of bonds (or angles) that are observed in the model and the number of bonds (or angles) that are defined in the Chemical Component Dictionary. The Link column lists molecule types, if any, to which the group is linked. The Z score for a bond

length (or angle) is the number of standard deviations the observed value is removed from the expected value. A bond length (or angle) with $|Z| > 2$ is considered an outlier worth inspection. RMSZ is the root-mean-square of all Z scores of the bond lengths (or angles).

Mol	Type	Chain	Res	Link	Bond lengths			Bond angles		
					Counts	RMSZ	# Z > 2	Counts	RMSZ	# Z > 2
5	BTB	A	504	-	13,13,13	0.36	0	7,16,16	0.75	0
5	BTB	A	506	-	13,13,13	0.34	0	7,16,16	0.46	0
7	GOL	C	507	-	5,5,5	0.36	0	5,5,5	0.29	0
2	HEM	C	501	1	41,50,50	1.50	5 (12%)	45,82,82	1.74	10 (22%)
2	HEM	B	501	1	41,50,50	1.51	7 (17%)	45,82,82	2.01	17 (37%)
2	HEM	A	501	1	41,50,50	1.50	4 (9%)	45,82,82	1.52	7 (15%)
5	BTB	B	504	9	13,13,13	0.49	0	7,16,16	0.67	0
5	BTB	B	509	-	13,13,13	0.54	0	7,16,16	0.78	0
5	BTB	A	505	-	13,13,13	0.37	0	7,16,16	0.43	0
5	BTB	D	504	-	13,13,13	0.63	0	7,16,16	0.79	0
4	KLD	C	503	-	28,28,28	0.52	0	31,39,39	1.86	8 (25%)
5	BTB	C	504	-	13,13,13	0.50	0	7,16,16	1.15	1 (14%)
4	KLD	A	503	-	28,28,28	0.44	0	31,39,39	1.66	7 (22%)
5	BTB	B	505	-	13,13,13	0.46	0	7,16,16	1.06	0
4	KLD	B	503	-	28,28,28	0.52	0	31,39,39	1.87	8 (25%)
7	GOL	A	508	-	5,5,5	0.35	0	5,5,5	0.35	0
4	KLD	D	502	-	28,28,28	0.69	0	31,39,39	2.13	6 (19%)
5	BTB	B	506	-	13,13,13	0.37	0	7,16,16	0.60	0
2	HEM	D	501	1	41,50,50	1.48	7 (17%)	45,82,82	1.65	11 (24%)
3	H4B	A	502	-	16,18,18	0.84	0	11,26,26	2.70	6 (54%)
3	H4B	C	502	-	16,18,18	0.83	0	11,26,26	2.86	7 (63%)
3	H4B	C	509	-	16,18,18	0.72	0	11,26,26	2.58	6 (54%)
5	BTB	C	505	-	13,13,13	0.33	0	7,16,16	0.37	0
5	BTB	D	503	9	13,13,13	0.39	0	7,16,16	0.77	0
5	BTB	A	511	-	13,13,13	0.67	0	7,16,16	2.02	2 (28%)
3	H4B	B	502	-	16,18,18	0.92	0	11,26,26	2.71	6 (54%)
5	BTB	D	505	-	13,13,13	0.41	0	7,16,16	0.42	0

In the following table, the Chirals column lists the number of chiral outliers, the number of chiral centers analysed, the number of these observed in the model and the number defined in the Chemical Component Dictionary. Similar counts are reported in the Torsion and Rings columns. '-' means no outliers of that kind were identified.

Mol	Type	Chain	Res	Link	Chirals	Torsions	Rings
5	BTB	A	504	-	-	8/21/21/21	-

Continued on next page...

Continued from previous page...

Mol	Type	Chain	Res	Link	Chirals	Torsions	Rings
5	BTB	A	506	-	-	7/21/21/21	-
7	GOL	C	507	-	-	4/4/4/4	-
2	HEM	C	501	1	-	2/12/54/54	-
2	HEM	B	501	1	-	4/12/54/54	-
2	HEM	A	501	1	-	2/12/54/54	-
5	BTB	B	504	9	-	3/21/21/21	-
5	BTB	B	509	-	-	14/21/21/21	-
5	BTB	A	505	-	-	4/21/21/21	-
5	BTB	D	504	-	-	15/21/21/21	-
4	KLD	C	503	-	-	3/10/22/22	0/3/3/3
5	BTB	C	504	-	-	7/21/21/21	-
4	KLD	A	503	-	-	4/10/22/22	0/3/3/3
5	BTB	B	505	-	-	3/21/21/21	-
4	KLD	B	503	-	-	5/10/22/22	0/3/3/3
7	GOL	A	508	-	-	3/4/4/4	-
4	KLD	D	502	-	-	8/10/22/22	0/3/3/3
5	BTB	B	506	-	-	4/21/21/21	-
2	HEM	D	501	1	-	1/12/54/54	-
3	H4B	A	502	-	-	3/8/17/17	0/2/2/2
3	H4B	C	502	-	-	3/8/17/17	0/2/2/2
3	H4B	C	509	-	-	3/8/17/17	0/2/2/2
5	BTB	C	505	-	-	6/21/21/21	-
5	BTB	D	503	9	-	10/21/21/21	-
5	BTB	A	511	-	-	9/21/21/21	-
3	H4B	B	502	-	-	3/8/17/17	0/2/2/2
5	BTB	D	505	-	-	11/21/21/21	-

All (23) bond length outliers are listed below:

Mol	Chain	Res	Type	Atoms	Z	Observed(Å)	Ideal(Å)
2	B	501	HEM	C3C-CAC	3.99	1.56	1.47
2	A	501	HEM	C3C-C2C	-3.82	1.35	1.40
2	A	501	HEM	C3C-CAC	3.78	1.55	1.47
2	C	501	HEM	C3C-C2C	-3.50	1.35	1.40
2	C	501	HEM	C3C-CAC	3.40	1.54	1.47
2	D	501	HEM	FE-NB	3.39	2.13	1.96

Continued on next page...

Continued from previous page...

Mol	Chain	Res	Type	Atoms	Z	Observed(Å)	Ideal(Å)
2	D	501	HEM	C3C-CAC	3.31	1.54	1.47
2	D	501	HEM	C3C-C2C	-3.29	1.35	1.40
2	C	501	HEM	CAB-C3B	3.07	1.55	1.47
2	B	501	HEM	FE-NB	3.02	2.11	1.96
2	A	501	HEM	CAB-C3B	2.98	1.55	1.47
2	B	501	HEM	CAB-C3B	2.82	1.55	1.47
2	C	501	HEM	FE-NB	2.75	2.10	1.96
2	D	501	HEM	CAB-C3B	2.74	1.54	1.47
2	A	501	HEM	FE-NB	2.73	2.10	1.96
2	B	501	HEM	C3C-C2C	-2.43	1.37	1.40
2	C	501	HEM	FE-ND	2.26	2.08	1.96
2	D	501	HEM	C2C-C1C	2.24	1.47	1.42
2	B	501	HEM	CMD-C2D	2.22	1.55	1.50
2	B	501	HEM	CMA-C3A	2.18	1.56	1.51
2	D	501	HEM	CMD-C2D	2.18	1.55	1.50
2	B	501	HEM	CMB-C2B	2.08	1.55	1.50
2	D	501	HEM	CAA-C2A	2.01	1.55	1.52

All (102) bond angle outliers are listed below:

Mol	Chain	Res	Type	Atoms	Z	Observed(°)	Ideal(°)
4	D	502	KLD	C02-N01-C06	7.92	124.10	118.10
3	A	502	H4B	C8A-C4A-C4	5.50	119.46	114.57
3	B	502	H4B	C8A-C4A-C4	5.32	119.30	114.57
2	B	501	HEM	CBA-CAA-C2A	-5.24	103.69	112.62
4	C	503	KLD	C02-N01-C06	5.10	121.97	118.10
3	C	509	H4B	C8A-C4A-C4	5.03	119.03	114.57
3	C	502	H4B	C8A-C4A-C4	4.86	118.89	114.57
4	B	503	KLD	C21-N21-C22	-4.64	106.16	112.45
4	A	503	KLD	C02-N01-C06	4.44	121.46	118.10
2	C	501	HEM	C4B-CHC-C1C	4.42	128.39	122.56
4	D	502	KLD	C05-C06-N01	-4.39	118.25	122.90
4	D	502	KLD	C08-C06-C05	4.10	126.65	121.22
2	B	501	HEM	CMA-C3A-C4A	-4.01	122.30	128.46
2	B	501	HEM	CMC-C2C-C3C	3.97	132.10	124.68
5	A	511	BTB	O8-C8-C7	-3.92	94.93	111.19
3	C	502	H4B	C4-C4A-N5	3.91	122.40	119.12
4	B	503	KLD	C02-N01-C06	3.82	121.00	118.10
2	C	501	HEM	CAA-CBA-CGA	-3.74	103.27	113.76
3	B	502	H4B	C2-N3-C4	3.70	121.80	115.93
4	B	503	KLD	C14-C13-C12	-3.69	118.86	123.52
2	B	501	HEM	C4D-ND-C1D	3.63	108.83	105.07

Continued on next page...

Continued from previous page...

Mol	Chain	Res	Type	Atoms	Z	Observed(°)	Ideal(°)
3	B	502	H4B	N1-C2-N3	-3.62	119.74	125.42
3	C	502	H4B	N1-C2-N3	-3.60	119.77	125.42
4	C	503	KLD	C08-C06-N01	3.59	121.30	115.95
2	D	501	HEM	CMA-C3A-C4A	-3.58	122.95	128.46
3	C	502	H4B	C2-N3-C4	3.58	121.62	115.93
3	A	502	H4B	C4-C4A-N5	3.50	122.06	119.12
2	A	501	HEM	C4B-CHC-C1C	3.49	127.17	122.56
3	C	509	H4B	C4-C4A-N5	3.46	122.02	119.12
2	C	501	HEM	CBD-CAD-C3D	-3.40	103.18	112.63
4	A	503	KLD	C09-C08-C06	-3.30	105.60	112.99
4	C	503	KLD	C05-C06-N01	-3.22	119.48	122.90
2	D	501	HEM	C1B-NB-C4B	3.17	108.34	105.07
4	A	503	KLD	C14-C13-C12	-3.15	119.54	123.52
5	A	511	BTB	C8-C7-N	-3.12	99.40	111.59
4	C	503	KLD	N02-C02-N01	3.11	121.41	116.49
3	C	509	H4B	C2-N3-C4	3.07	120.80	115.93
2	A	501	HEM	C1B-NB-C4B	3.06	108.24	105.07
4	D	502	KLD	C14-C13-C12	-3.02	119.70	123.52
2	B	501	HEM	C1B-NB-C4B	3.01	108.18	105.07
2	A	501	HEM	C3B-C2B-C1B	3.00	108.71	106.49
2	D	501	HEM	C4B-CHC-C1C	2.95	126.46	122.56
3	A	502	H4B	N2-C2-N3	2.91	121.78	117.25
2	D	501	HEM	C3B-C2B-C1B	2.85	108.60	106.49
3	C	509	H4B	N1-C2-N3	-2.84	120.97	125.42
2	D	501	HEM	CMC-C2C-C3C	2.83	129.98	124.68
2	B	501	HEM	C4B-CHC-C1C	2.82	126.28	122.56
3	C	502	H4B	C2-N1-C8A	2.81	120.83	114.54
2	C	501	HEM	C3D-C4D-ND	-2.74	107.11	110.17
2	B	501	HEM	C4C-CHD-C1D	2.73	126.17	122.56
4	A	503	KLD	C05-C06-N01	-2.73	120.01	122.90
3	A	502	H4B	N1-C2-N3	-2.72	121.15	125.42
2	B	501	HEM	C3B-C2B-C1B	2.72	108.51	106.49
4	D	502	KLD	C11-C12-C13	2.71	121.28	118.81
2	A	501	HEM	CAA-CBA-CGA	-2.70	106.20	113.76
4	C	503	KLD	C14-C13-C12	-2.69	120.11	123.52
3	A	502	H4B	C2-N1-C8A	2.68	120.54	114.54
3	A	502	H4B	C2-N3-C4	2.67	120.17	115.93
2	C	501	HEM	C3B-C2B-C1B	2.66	108.46	106.49
2	C	501	HEM	CMA-C3A-C4A	-2.66	124.37	128.46
4	B	503	KLD	C04-C05-C06	-2.66	118.57	120.32
2	C	501	HEM	C4D-ND-C1D	2.66	107.82	105.07
3	B	502	H4B	C2-N1-C8A	2.66	120.50	114.54

Continued on next page...

Continued from previous page...

Mol	Chain	Res	Type	Atoms	Z	Observed(°)	Ideal(°)
2	D	501	HEM	CBD-CAD-C3D	-2.66	105.25	112.63
4	B	503	KLD	C08-C09-C11	-2.65	103.97	113.28
5	C	504	BTB	O3-C3-C2	-2.65	104.19	111.44
2	C	501	HEM	C1B-NB-C4B	2.63	107.79	105.07
2	B	501	HEM	C3D-C4D-ND	-2.63	107.24	110.17
4	B	503	KLD	C11-C12-C13	2.62	121.19	118.81
2	D	501	HEM	C4D-ND-C1D	2.62	107.78	105.07
2	D	501	HEM	C4C-CHD-C1D	2.61	126.00	122.56
4	C	503	KLD	F23-C23-C24	2.59	112.02	108.98
2	A	501	HEM	C4D-ND-C1D	2.58	107.73	105.07
2	D	501	HEM	CHC-C4B-C3B	2.53	128.44	124.57
3	C	509	H4B	C2-N1-C8A	2.51	120.16	114.54
4	B	503	KLD	C09-C08-C06	-2.51	107.37	112.99
4	C	503	KLD	C11-C12-C13	2.46	121.05	118.81
2	B	501	HEM	C2D-C1D-ND	-2.42	106.98	109.88
3	C	502	H4B	N2-C2-N3	2.41	121.01	117.25
2	B	501	HEM	CHA-C4D-ND	2.39	127.33	124.38
2	B	501	HEM	CHC-C4B-C3B	2.34	128.15	124.57
2	A	501	HEM	CMA-C3A-C4A	-2.33	124.88	128.46
2	D	501	HEM	C3D-C4D-ND	-2.32	107.58	110.17
2	B	501	HEM	CMA-C3A-C2A	2.31	129.29	124.94
4	A	503	KLD	C08-C06-N01	2.30	119.37	115.95
4	B	503	KLD	F23-C23-C24	2.29	111.67	108.98
2	C	501	HEM	CHC-C4B-C3B	2.28	128.06	124.57
2	C	501	HEM	CMC-C2C-C3C	2.27	128.92	124.68
3	B	502	H4B	C4-C4A-N5	2.23	121.00	119.12
3	C	509	H4B	C4A-N5-C6	-2.22	115.13	121.16
4	A	503	KLD	C21-N21-C22	-2.22	109.44	112.45
2	D	501	HEM	CMA-C3A-C2A	2.21	129.10	124.94
2	B	501	HEM	O2A-CGA-CBA	2.20	121.08	114.03
2	B	501	HEM	CHD-C1D-ND	2.19	126.81	124.43
2	A	501	HEM	CBD-CAD-C3D	-2.16	106.61	112.63
3	C	502	H4B	C4A-N5-C6	-2.15	115.30	121.16
4	C	503	KLD	C21-N21-C22	-2.14	109.55	112.45
4	D	502	KLD	C05-C04-C03	2.11	120.61	118.09
4	A	503	KLD	C17-C15-C16	-2.11	117.07	120.54
3	B	502	H4B	N2-C2-N1	2.06	120.45	117.25
2	B	501	HEM	O1A-CGA-CBA	-2.04	116.54	123.08
2	B	501	HEM	C4A-C3A-C2A	2.01	108.40	107.00

There are no chirality outliers.

All (149) torsion outliers are listed below:

Mol	Chain	Res	Type	Atoms
2	A	501	HEM	C2A-CAA-CBA-CGA
2	C	501	HEM	C2A-CAA-CBA-CGA
3	A	502	H4B	C7-C6-C9-O9
3	A	502	H4B	C7-C6-C9-C10
3	B	502	H4B	C7-C6-C9-O9
3	B	502	H4B	C7-C6-C9-C10
3	C	509	H4B	C7-C6-C9-O9
3	C	509	H4B	C7-C6-C9-C10
4	A	503	KLD	C17-C18-C25-N21
4	B	503	KLD	C17-C18-C25-N21
4	D	502	KLD	C17-C18-C25-N21
5	A	504	BTB	O1-C1-C2-C3
5	A	504	BTB	O1-C1-C2-C4
5	A	504	BTB	O1-C1-C2-N
5	A	504	BTB	C4-C2-C3-O3
5	A	504	BTB	C1-C2-C4-O4
5	A	504	BTB	C3-C2-C4-O4
5	A	505	BTB	O1-C1-C2-C3
5	A	505	BTB	O1-C1-C2-C4
5	A	505	BTB	O1-C1-C2-N
5	A	506	BTB	C1-C2-C3-O3
5	A	511	BTB	O1-C1-C2-C3
5	A	511	BTB	O1-C1-C2-C4
5	A	511	BTB	O1-C1-C2-N
5	A	511	BTB	C1-C2-C3-O3
5	A	511	BTB	C4-C2-C3-O3
5	A	511	BTB	N-C2-C3-O3
5	B	505	BTB	C1-C2-C4-O4
5	B	505	BTB	C3-C2-C4-O4
5	B	506	BTB	O1-C1-C2-C3
5	B	506	BTB	O1-C1-C2-C4
5	B	509	BTB	C1-C2-C3-O3
5	B	509	BTB	C4-C2-C3-O3
5	B	509	BTB	C1-C2-C4-O4
5	B	509	BTB	C3-C2-C4-O4
5	B	509	BTB	N-C2-C4-O4
5	B	509	BTB	C1-C2-N-C5
5	B	509	BTB	C1-C2-N-C7
5	B	509	BTB	C3-C2-N-C7
5	B	509	BTB	C4-C2-N-C7
5	B	509	BTB	C8-C7-N-C5
5	C	504	BTB	C1-C2-N-C5
5	C	504	BTB	C1-C2-N-C7

Continued on next page...

Continued from previous page...

Mol	Chain	Res	Type	Atoms
5	C	504	BTB	C3-C2-N-C5
5	C	504	BTB	C3-C2-N-C7
5	C	504	BTB	C4-C2-N-C5
5	C	504	BTB	C4-C2-N-C7
5	C	505	BTB	C1-C2-C3-O3
5	C	505	BTB	C4-C2-C3-O3
5	C	505	BTB	N-C2-C3-O3
5	C	505	BTB	C1-C2-C4-O4
5	C	505	BTB	C3-C2-C4-O4
5	C	505	BTB	N-C2-C4-O4
5	D	503	BTB	O1-C1-C2-C3
5	D	503	BTB	O1-C1-C2-C4
5	D	503	BTB	O1-C1-C2-N
5	D	503	BTB	C1-C2-C4-O4
5	D	503	BTB	C3-C2-C4-O4
5	D	503	BTB	N-C2-C4-O4
5	D	503	BTB	N-C5-C6-O6
5	D	504	BTB	O1-C1-C2-C3
5	D	504	BTB	O1-C1-C2-C4
5	D	504	BTB	O1-C1-C2-N
5	D	504	BTB	C1-C2-C3-O3
5	D	504	BTB	C4-C2-C3-O3
5	D	504	BTB	N-C2-C3-O3
5	D	504	BTB	C3-C2-C4-O4
5	D	504	BTB	C1-C2-N-C5
5	D	504	BTB	C1-C2-N-C7
5	D	504	BTB	C3-C2-N-C5
5	D	504	BTB	C3-C2-N-C7
5	D	504	BTB	C4-C2-N-C5
5	D	504	BTB	C4-C2-N-C7
5	D	504	BTB	C8-C7-N-C5
5	D	505	BTB	O1-C1-C2-C3
5	D	505	BTB	O1-C1-C2-C4
5	D	505	BTB	O1-C1-C2-N
5	D	505	BTB	C1-C2-C4-O4
5	D	505	BTB	C3-C2-C4-O4
5	D	505	BTB	N-C2-C4-O4
5	D	505	BTB	C1-C2-N-C7
5	D	505	BTB	C3-C2-N-C5
7	A	508	GOL	O1-C1-C2-C3
7	C	507	GOL	O1-C1-C2-C3
7	C	507	GOL	C1-C2-C3-O3

Continued on next page...

Continued from previous page...

Mol	Chain	Res	Type	Atoms
5	A	511	BTB	N-C5-C6-O6
5	B	509	BTB	N-C5-C6-O6
2	B	501	HEM	C2A-CAA-CBA-CGA
5	C	504	BTB	N-C5-C6-O6
5	B	506	BTB	N-C7-C8-O8
5	D	504	BTB	N-C5-C6-O6
5	A	511	BTB	N-C7-C8-O8
7	A	508	GOL	O1-C1-C2-O2
7	C	507	GOL	O1-C1-C2-O2
4	C	503	KLD	C15-C17-C18-C25
5	A	506	BTB	N-C5-C6-O6
7	C	507	GOL	O2-C2-C3-O3
2	A	501	HEM	C4B-C3B-CAB-CBB
2	B	501	HEM	C4B-C3B-CAB-CBB
2	C	501	HEM	C4B-C3B-CAB-CBB
2	D	501	HEM	C4B-C3B-CAB-CBB
7	A	508	GOL	O2-C2-C3-O3
3	B	502	H4B	N5-C6-C9-O9
3	C	509	H4B	N5-C6-C9-O9
5	A	506	BTB	C4-C2-C3-O3
4	A	503	KLD	C17-C18-C25-C24
4	B	503	KLD	C17-C18-C25-C24
4	D	502	KLD	C17-C18-C25-C24
5	A	504	BTB	N-C2-C4-O4
5	A	506	BTB	C1-C2-N-C5
5	A	506	BTB	C1-C2-N-C7
5	A	506	BTB	C3-C2-N-C5
5	A	506	BTB	C4-C2-N-C7
5	A	511	BTB	C4-C2-N-C7
5	B	504	BTB	O1-C1-C2-N
5	B	505	BTB	N-C2-C4-O4
5	B	506	BTB	O1-C1-C2-N
5	B	509	BTB	N-C2-C3-O3
5	B	509	BTB	C3-C2-N-C5
5	B	509	BTB	C4-C2-N-C5
5	D	503	BTB	C1-C2-N-C5
5	D	503	BTB	C3-C2-N-C5
5	D	505	BTB	C1-C2-N-C5
5	D	505	BTB	C3-C2-N-C7
5	D	505	BTB	C4-C2-N-C7
3	C	502	H4B	C7-C6-C9-C10
5	A	505	BTB	N-C7-C8-O8

Continued on next page...

Continued from previous page...

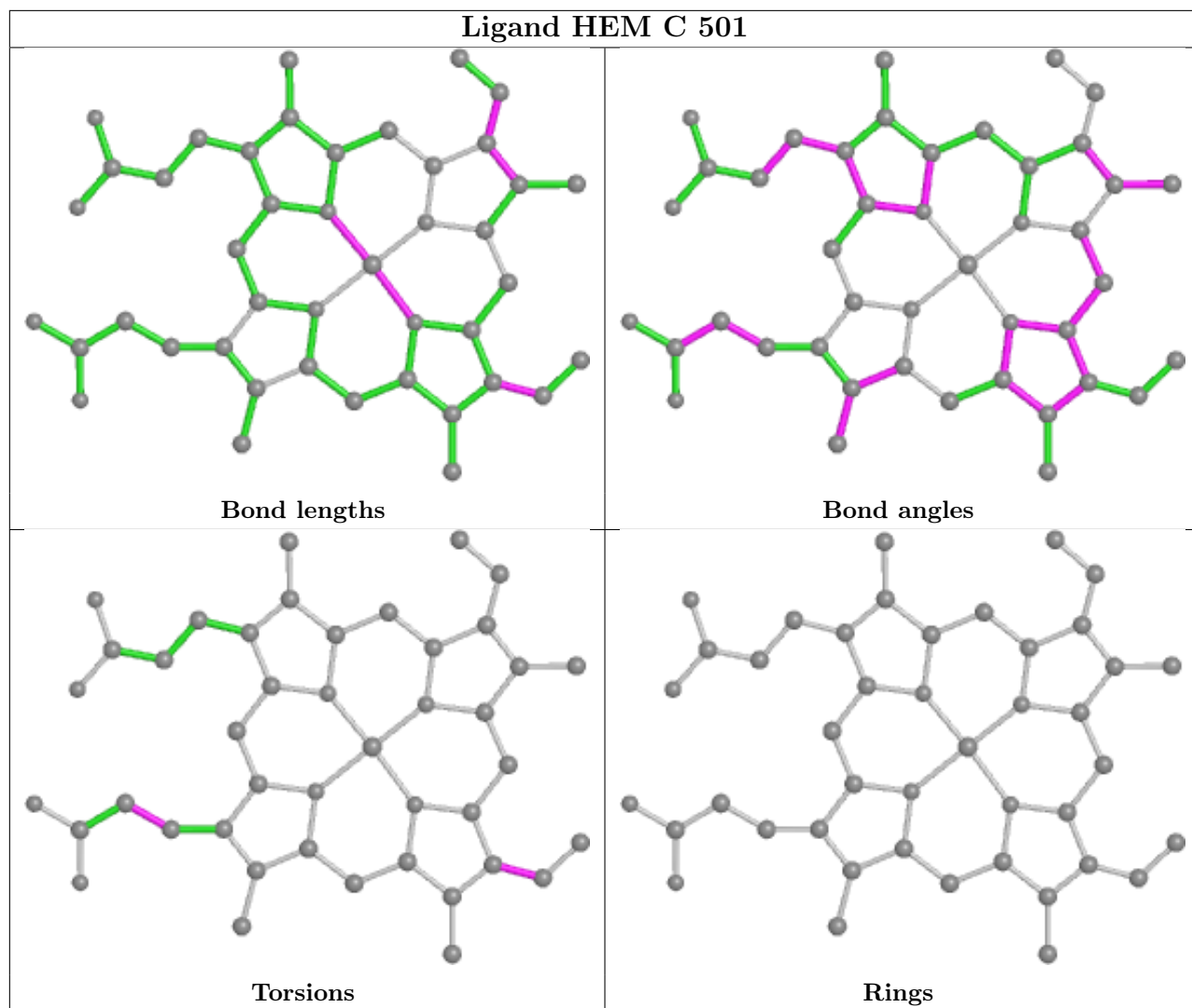
Mol	Chain	Res	Type	Atoms
4	D	502	KLD	C08-C09-C11-C12
4	A	503	KLD	C14-C15-C17-C18
4	D	502	KLD	C08-C09-C11-C16
3	C	502	H4B	C7-C6-C9-O9
4	A	503	KLD	C16-C15-C17-C18
4	B	503	KLD	C14-C15-C17-C18
4	D	502	KLD	C14-C15-C17-C18
4	D	502	KLD	C16-C15-C17-C18
2	B	501	HEM	CAA-CBA-CGA-O2A
4	B	503	KLD	C16-C15-C17-C18
5	D	503	BTB	N-C7-C8-O8
4	D	502	KLD	C05-C06-C08-C09
4	B	503	KLD	C15-C17-C18-C25
2	B	501	HEM	CAA-CBA-CGA-O1A
4	C	503	KLD	C16-C15-C17-C18
4	C	503	KLD	C14-C15-C17-C18
4	D	502	KLD	N01-C06-C08-C09
3	A	502	H4B	N5-C6-C9-O9
3	C	502	H4B	N5-C6-C9-O9
5	A	504	BTB	C1-C2-C3-O3
5	B	504	BTB	O1-C1-C2-C3
5	B	504	BTB	O1-C1-C2-C4

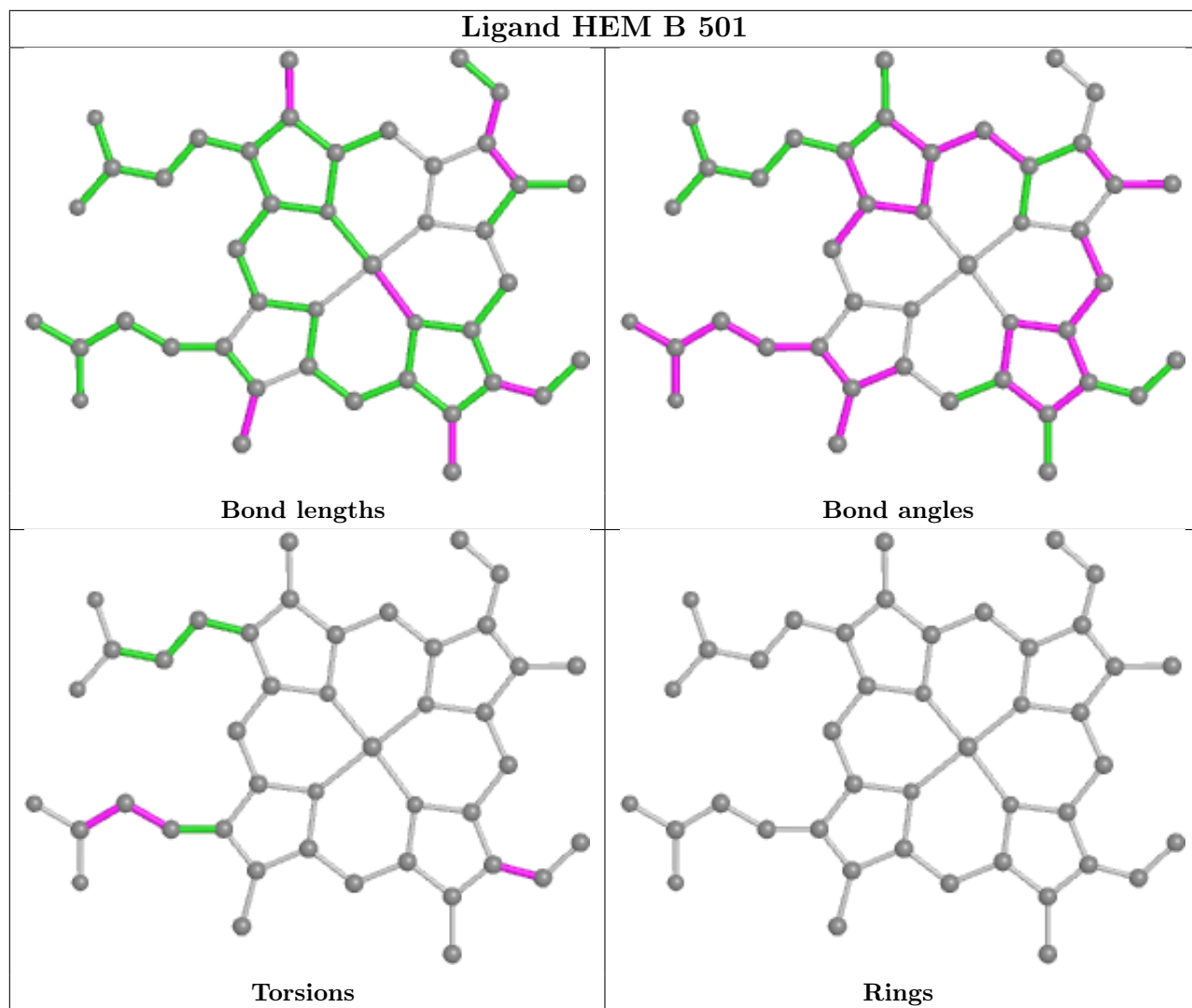
There are no ring outliers.

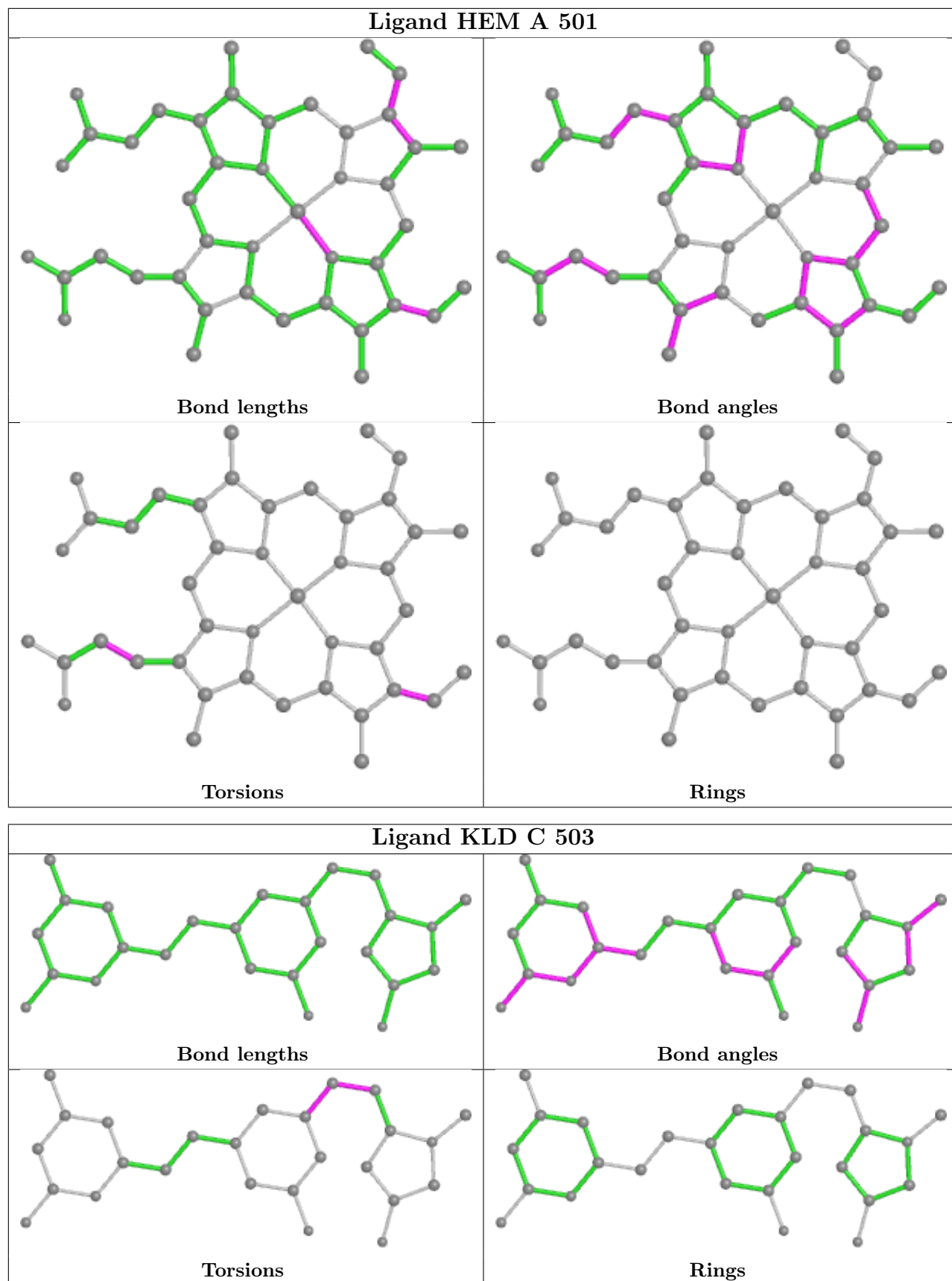
1 monomer is involved in 1 short contact:

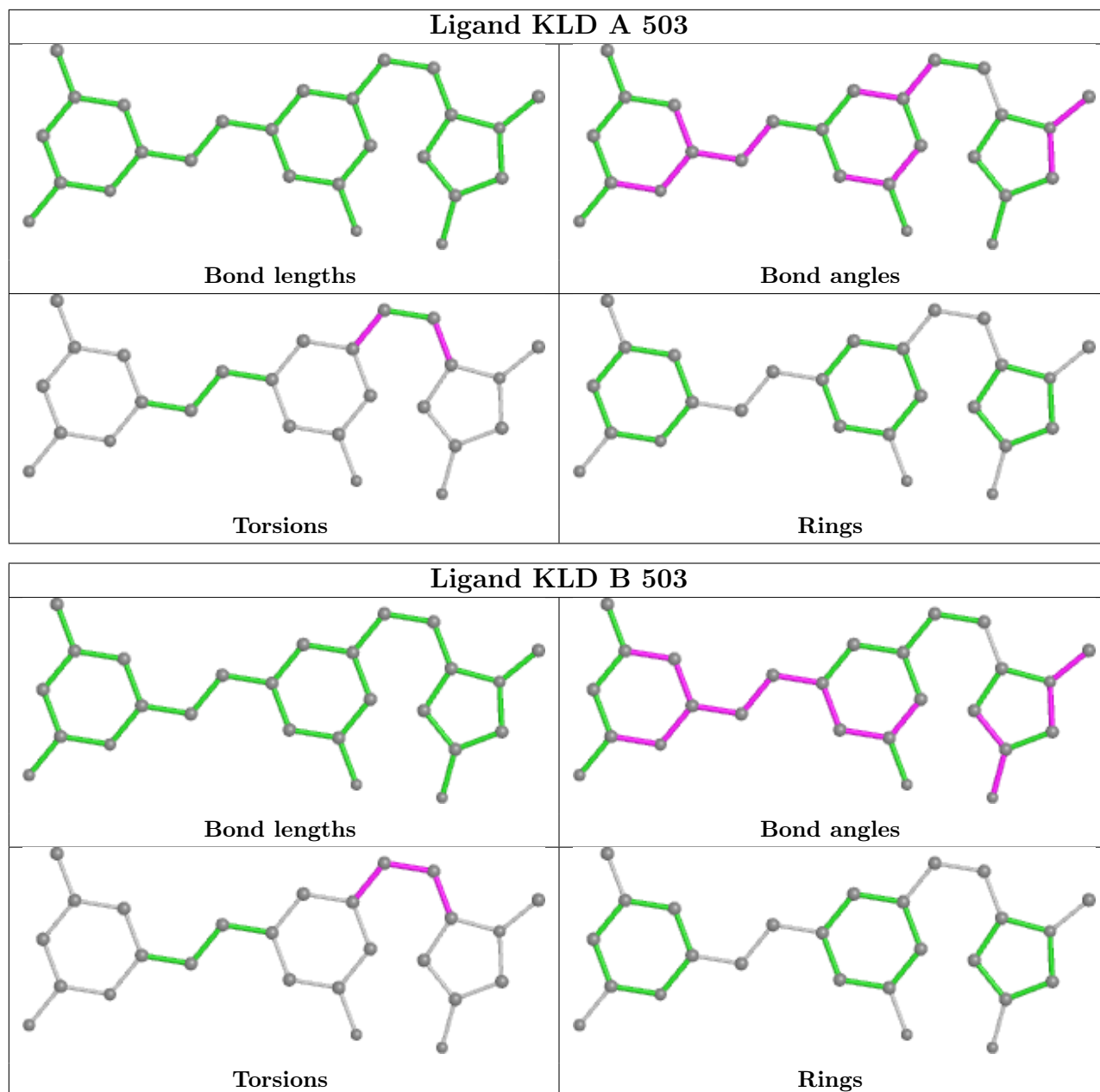
Mol	Chain	Res	Type	Clashes	Symm-Clashes
5	B	505	BTB	0	1

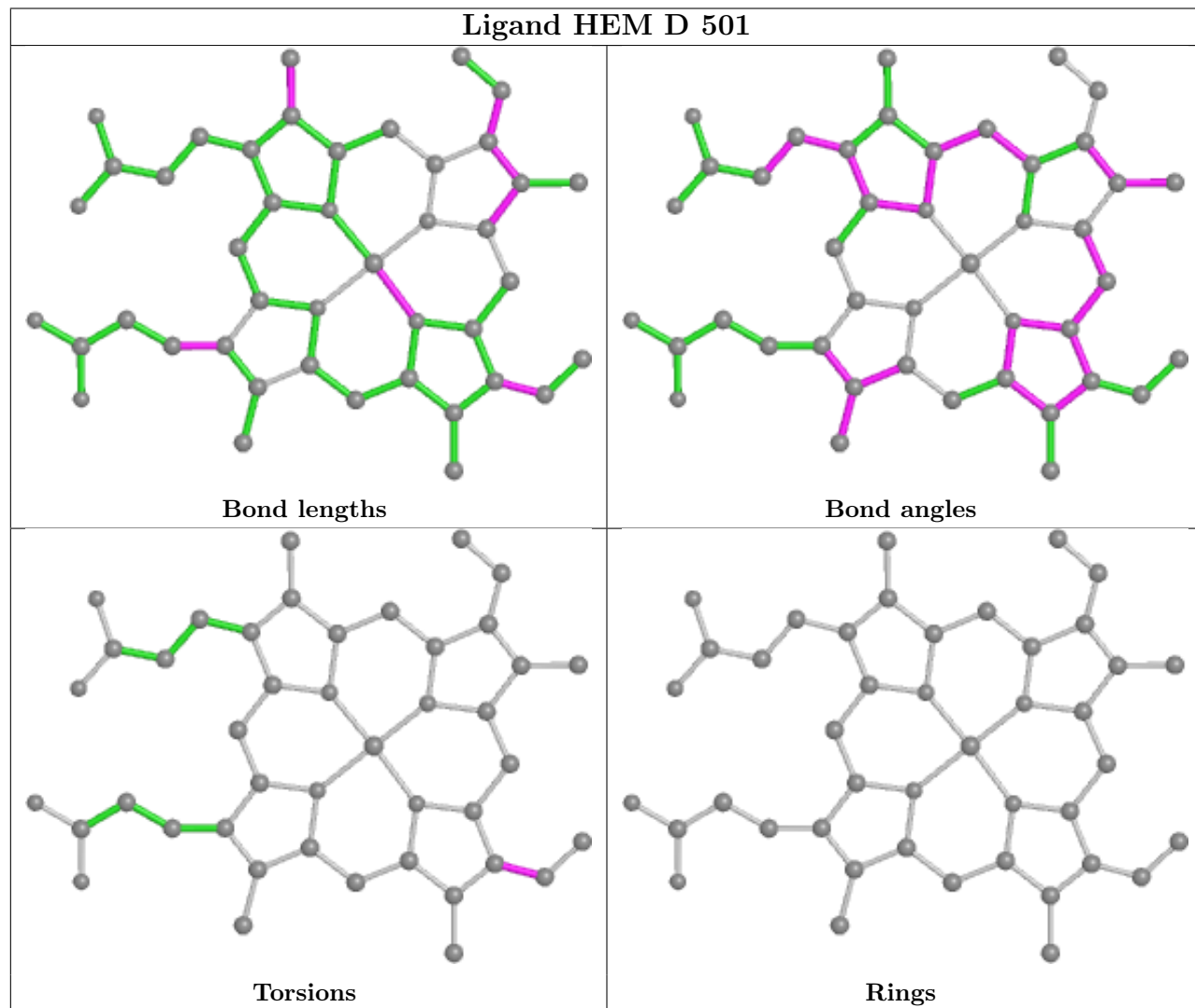
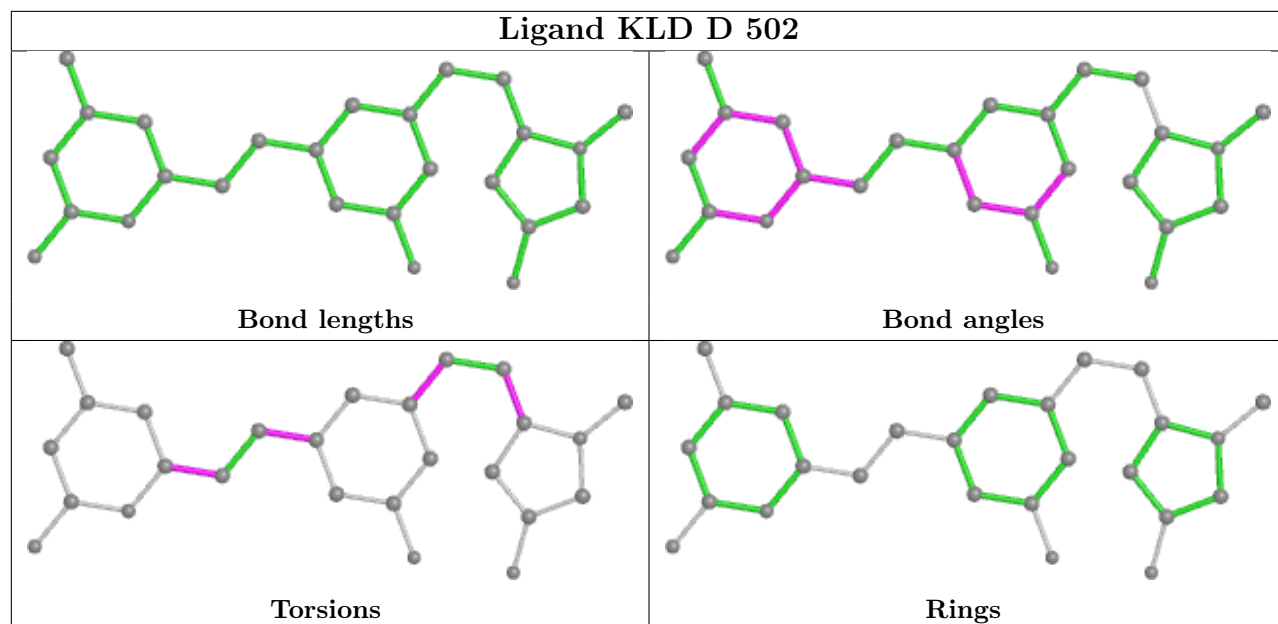
The following is a two-dimensional graphical depiction of Mogul quality analysis of bond lengths, bond angles, torsion angles, and ring geometry for all instances of the Ligand of Interest. In addition, ligands with molecular weight > 250 and outliers as shown on the validation Tables will also be included. For torsion angles, if less than 5% of the Mogul distribution of torsion angles is within 10 degrees of the torsion angle in question, then that torsion angle is considered an outlier. Any bond that is central to one or more torsion angles identified as an outlier by Mogul will be highlighted in the graph. For rings, the root-mean-square deviation (RMSD) between the ring in question and similar rings identified by Mogul is calculated over all ring torsion angles. If the average RMSD is greater than 60 degrees and the minimal RMSD between the ring in question and any Mogul-identified rings is also greater than 60 degrees, then that ring is considered an outlier. The outliers are highlighted in purple. The color gray indicates Mogul did not find sufficient equivalents in the CSD to analyse the geometry.











4.7 Other polymers [i](#)

There are no such residues in this entry.

4.8 Polymer linkage issues [i](#)

There are no chain breaks in this entry.

5 Fit of model and data [i](#)

5.1 Protein, DNA and RNA chains [i](#)

EDS failed to run properly - this section is therefore empty.

5.2 Non-standard residues in protein, DNA, RNA chains [i](#)

EDS failed to run properly - this section is therefore empty.

5.3 Carbohydrates [i](#)

EDS failed to run properly - this section is therefore empty.

5.4 Ligands [i](#)

EDS failed to run properly - this section is therefore empty.

5.5 Other polymers [i](#)

EDS failed to run properly - this section is therefore empty.