



# Full wwPDB X-ray Structure Validation Report ⓘ

Oct 2, 2023 – 04:01 PM EDT

PDB ID : 6NHE  
Title : Structure of rat neuronal nitric oxide synthase heme domain in complex with 6-(5-(2-((2S,4R)-4-ethoxy-1-methylpyrrolidin-2-yl)ethyl)-2,3-difluorophenethyl)-4-methylpyridin-2-amine  
Authors : Li, H.; Poulos, T.L.  
Deposited on : 2018-12-21  
Resolution : 2.00 Å(reported)

This is a Full wwPDB X-ray Structure Validation Report for a publicly released PDB entry.

We welcome your comments at [validation@mail.wwpdb.org](mailto:validation@mail.wwpdb.org)

A user guide is available at

<https://www.wwpdb.org/validation/2017/XrayValidationReportHelp>

with specific help available everywhere you see the ⓘ symbol.

The types of validation reports are described at

<http://www.wwpdb.org/validation/2017/FAQs#types>.

---

The following versions of software and data (see [references ⓘ](#)) were used in the production of this report:

MolProbity : **FAILED**  
Mogul : 1.8.5 (274361), CSD as541be (2020)  
Xtriage (Phenix) : 1.13  
EDS : **FAILED**  
buster-report : 1.1.7 (2018)  
Percentile statistics : 20191225.v01 (using entries in the PDB archive December 25th 2019)  
Ideal geometry (proteins) : Engh & Huber (2001)  
Ideal geometry (DNA, RNA) : Parkinson et al. (1996)  
Validation Pipeline (wwPDB-VP) : 2.35.1

## 1 Overall quality at a glance

The following experimental techniques were used to determine the structure:

*X-RAY DIFFRACTION*

The reported resolution of this entry is 2.00 Å.

There are no overall percentile quality scores available for this entry.

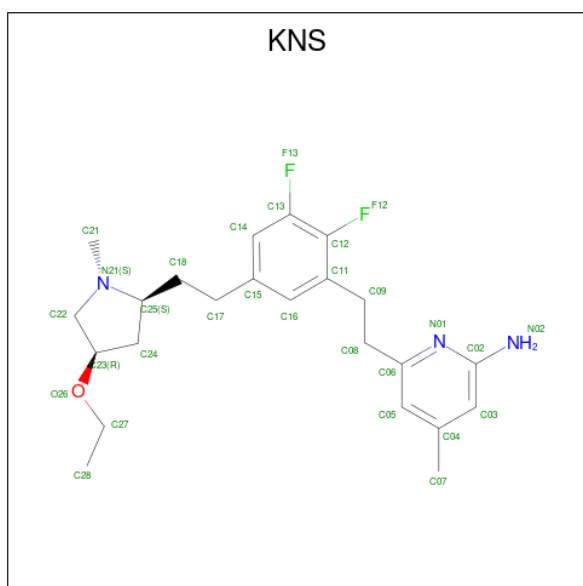
MolProbity and EDS failed to run properly - the sequence quality summary graphics cannot be shown.





Mol	Chain	Residues	Atoms				ZeroOcc	AltConf
			Total	C	N	O		
3	A	1	17	9	5	3	0	0
3	B	1	17	9	5	3	0	0

- Molecule 4 is 6-[2-(5-{2-[(2S,4R)-4-ethoxy-1-methylpyrrolidin-2-yl]ethyl}-2,3-difluorophenyl)ethyl]-4-methylpyridin-2-amine (three-letter code: KNS) (formula: C<sub>23</sub>H<sub>31</sub>F<sub>2</sub>N<sub>3</sub>O).



Mol	Chain	Residues	Atoms					ZeroOcc	AltConf
			Total	C	F	N	O		
4	A	1	29	23	2	3	1	0	0

*Continued on next page...*

Continued from previous page...

Mol	Chain	Residues	Atoms					ZeroOcc	AltConf
			Total	C	F	N	O		
4	B	1	29	23	2	3	1	0	0

- Molecule 5 is ACETATE ION (three-letter code: ACT) (formula: C<sub>2</sub>H<sub>3</sub>O<sub>2</sub>).



Mol	Chain	Residues	Atoms			ZeroOcc	AltConf
			Total	C	O		
5	A	1	4	2	2	0	0
5	B	1	4	2	2	0	0

- Molecule 6 is ZINC ION (three-letter code: ZN) (formula: Zn).

Mol	Chain	Residues	Atoms		ZeroOcc	AltConf
			Total	Zn		
6	A	1	1	1	0	0

- Molecule 7 is water.

Mol	Chain	Residues	Atoms		ZeroOcc	AltConf
			Total	O		
7	A	147	147	147	0	0
7	B	180	180	180	0	0

MolProbity and EDS failed to run properly - this section is therefore empty.

### 3 Data and refinement statistics

EDS failed to run properly - this section is therefore incomplete.

Property	Value	Source
Space group	P 21 21 21	Depositor
Cell constants a, b, c, $\alpha$ , $\beta$ , $\gamma$	51.73Å 111.67Å 164.69Å 90.00° 90.00° 90.00°	Depositor
Resolution (Å)	49.27 – 2.00	Depositor
% Data completeness (in resolution range)	99.7 (49.27-2.00)	Depositor
$R_{merge}$	0.16	Depositor
$R_{sym}$	0.16	Depositor
$\langle I/\sigma(I) \rangle$ <sup>1</sup>	1.52 (at 2.00Å)	Xtrriage
Refinement program	PHENIX (1.11.1-2575_1496: ???)	Depositor
R, $R_{free}$	0.185 , 0.232	Depositor
Wilson B-factor (Å <sup>2</sup> )	36.9	Xtrriage
Anisotropy	0.866	Xtrriage
L-test for twinning <sup>2</sup>	$\langle  L  \rangle = 0.49$ , $\langle L^2 \rangle = 0.32$	Xtrriage
Estimated twinning fraction	No twinning to report.	Xtrriage
Total number of atoms	7303	wwPDB-VP
Average B, all atoms (Å <sup>2</sup> )	58.0	wwPDB-VP

Xtrriage's analysis on translational NCS is as follows: *The largest off-origin peak in the Patterson function is 5.01% of the height of the origin peak. No significant pseudotranslation is detected.*

<sup>1</sup> Intensities estimated from amplitudes.

<sup>2</sup> Theoretical values of  $\langle |L| \rangle$ ,  $\langle L^2 \rangle$  for acentric reflections are 0.5, 0.333 respectively for untwinned datasets, and 0.375, 0.2 for perfectly twinned datasets.

## 4 Model quality [i](#)

### 4.1 Standard geometry [i](#)

MolProbity failed to run properly - this section is therefore empty.

### 4.2 Too-close contacts [i](#)

MolProbity failed to run properly - this section is therefore empty.

### 4.3 Torsion angles [i](#)

#### 4.3.1 Protein backbone [i](#)

MolProbity failed to run properly - this section is therefore empty.

#### 4.3.2 Protein sidechains [i](#)

MolProbity failed to run properly - this section is therefore empty.

#### 4.3.3 RNA [i](#)

MolProbity failed to run properly - this section is therefore empty.

### 4.4 Non-standard residues in protein, DNA, RNA chains [i](#)

There are no non-standard protein/DNA/RNA residues in this entry.

### 4.5 Carbohydrates [i](#)

There are no monosaccharides in this entry.

### 4.6 Ligand geometry [i](#)

Of 9 ligands modelled in this entry, 1 is monoatomic - leaving 8 for Mogul analysis.

In the following table, the Counts columns list the number of bonds (or angles) for which Mogul statistics could be retrieved, the number of bonds (or angles) that are observed in the model and the number of bonds (or angles) that are defined in the Chemical Component Dictionary. The Link column lists molecule types, if any, to which the group is linked. The Z score for a bond

length (or angle) is the number of standard deviations the observed value is removed from the expected value. A bond length (or angle) with  $|Z| > 2$  is considered an outlier worth inspection. RMSZ is the root-mean-square of all Z scores of the bond lengths (or angles).

Mol	Type	Chain	Res	Link	Bond lengths			Bond angles		
					Counts	RMSZ	# Z  > 2	Counts	RMSZ	# Z  > 2
2	HEM	A	801	1	41,50,50	1.44	6 (14%)	45,82,82	1.59	9 (20%)
5	ACT	A	804	-	3,3,3	0.77	0	3,3,3	0.73	0
4	KNS	B	803	-	31,31,31	0.46	0	36,43,43	1.71	8 (22%)
3	H4B	A	802	-	16,18,18	0.91	0	11,26,26	2.70	5 (45%)
2	HEM	B	801	1	41,50,50	1.53	6 (14%)	45,82,82	1.47	4 (8%)
5	ACT	B	804	-	3,3,3	0.78	0	3,3,3	0.62	0
4	KNS	A	803	-	31,31,31	0.43	0	36,43,43	1.60	11 (30%)
3	H4B	B	802	-	16,18,18	1.06	0	11,26,26	2.62	4 (36%)

In the following table, the Chirals column lists the number of chiral outliers, the number of chiral centers analysed, the number of these observed in the model and the number defined in the Chemical Component Dictionary. Similar counts are reported in the Torsion and Rings columns. '-' means no outliers of that kind were identified.

Mol	Type	Chain	Res	Link	Chirals	Torsions	Rings
2	HEM	A	801	1	-	6/12/54/54	-
4	KNS	B	803	-	-	6/13/25/25	0/3/3/3
3	H4B	A	802	-	-	0/8/17/17	0/2/2/2
2	HEM	B	801	1	-	2/12/54/54	-
4	KNS	A	803	-	-	3/13/25/25	0/3/3/3
3	H4B	B	802	-	-	0/8/17/17	0/2/2/2

All (12) bond length outliers are listed below:

Mol	Chain	Res	Type	Atoms	Z	Observed(Å)	Ideal(Å)
2	B	801	HEM	C3C-C2C	-3.93	1.34	1.40
2	B	801	HEM	C3C-CAC	3.46	1.54	1.47
2	A	801	HEM	C3C-C2C	-3.21	1.35	1.40
2	A	801	HEM	CAB-C3B	3.05	1.55	1.47
2	A	801	HEM	C3C-CAC	3.01	1.54	1.47
2	B	801	HEM	CAB-C3B	2.86	1.55	1.47
2	A	801	HEM	FE-NB	2.66	2.10	1.96
2	A	801	HEM	CAA-C2A	2.51	1.55	1.52
2	B	801	HEM	CAA-C2A	2.31	1.55	1.52
2	B	801	HEM	CMD-C2D	2.21	1.55	1.50
2	A	801	HEM	CMD-C2D	2.10	1.55	1.50

*Continued on next page...*



*Continued from previous page...*

Mol	Chain	Res	Type	Atoms	Z	Observed(Å)	Ideal(Å)
2	B	801	HEM	C2C-C1C	2.06	1.47	1.42

All (41) bond angle outliers are listed below:

Mol	Chain	Res	Type	Atoms	Z	Observed(°)	Ideal(°)
3	A	802	H4B	C8A-C4A-C4	6.45	120.30	114.57
3	B	802	H4B	C8A-C4A-C4	6.32	120.19	114.57
2	B	801	HEM	C4B-CHC-C1C	4.93	129.07	122.56
4	B	803	KNS	C02-N01-C06	4.37	121.41	118.10
4	B	803	KNS	C16-C11-C12	4.21	120.62	116.76
4	B	803	KNS	C09-C08-C06	-4.19	103.59	112.99
2	B	801	HEM	CAD-CBD-CGD	-3.77	105.48	113.60
4	A	803	KNS	C02-N01-C06	3.42	120.69	118.10
2	A	801	HEM	CMC-C2C-C3C	3.42	131.07	124.68
2	A	801	HEM	CAD-CBD-CGD	-3.21	106.69	113.60
4	A	803	KNS	C09-C08-C06	-3.18	105.87	112.99
4	A	803	KNS	C16-C11-C12	3.13	119.63	116.76
2	A	801	HEM	CMA-C3A-C4A	-3.04	123.79	128.46
3	B	802	H4B	N1-C2-N3	-3.04	120.66	125.42
3	A	802	H4B	N1-C2-N3	-2.99	120.73	125.42
4	A	803	KNS	C24-C23-C22	2.93	106.20	103.66
3	A	802	H4B	C2-N1-C8A	2.92	121.09	114.54
4	A	803	KNS	C09-C11-C12	-2.89	118.41	120.73
3	B	802	H4B	C2-N3-C4	2.75	120.30	115.93
4	A	803	KNS	C21-N21-C22	-2.75	108.72	112.45
2	A	801	HEM	C4B-CHC-C1C	2.71	126.14	122.56
3	B	802	H4B	C2-N1-C8A	2.70	120.59	114.54
2	B	801	HEM	CMA-C3A-C4A	-2.69	124.33	128.46
3	A	802	H4B	C2-N3-C4	2.67	120.18	115.93
2	A	801	HEM	CHA-C4D-ND	2.56	127.54	124.38
4	A	803	KNS	C08-C06-N01	2.40	119.52	115.95
2	A	801	HEM	C3B-C2B-C1B	2.38	108.25	106.49
4	B	803	KNS	C08-C09-C11	-2.28	109.13	112.81
2	A	801	HEM	C3C-C4C-NC	-2.27	106.66	110.94
2	A	801	HEM	CBD-CAD-C3D	2.25	118.89	112.63
4	A	803	KNS	C05-C06-N01	-2.18	120.59	122.90
4	B	803	KNS	C09-C11-C12	-2.14	119.01	120.73
4	A	803	KNS	F12-C12-C11	2.14	120.11	117.85
4	B	803	KNS	C23-C24-C25	2.12	107.51	102.44
4	B	803	KNS	C21-N21-C22	-2.12	109.57	112.45
4	A	803	KNS	C23-C24-C25	2.11	107.49	102.44
4	B	803	KNS	C24-C23-C22	2.08	105.46	103.66

*Continued on next page...*

*Continued from previous page...*

Mol	Chain	Res	Type	Atoms	Z	Observed(°)	Ideal(°)
3	A	802	H4B	N2-C2-N3	2.06	120.45	117.25
4	A	803	KNS	C24-C25-N21	2.02	107.91	103.90
2	B	801	HEM	C3B-C2B-C1B	2.01	107.98	106.49
2	A	801	HEM	C4C-CHD-C1D	2.01	125.21	122.56

There are no chirality outliers.

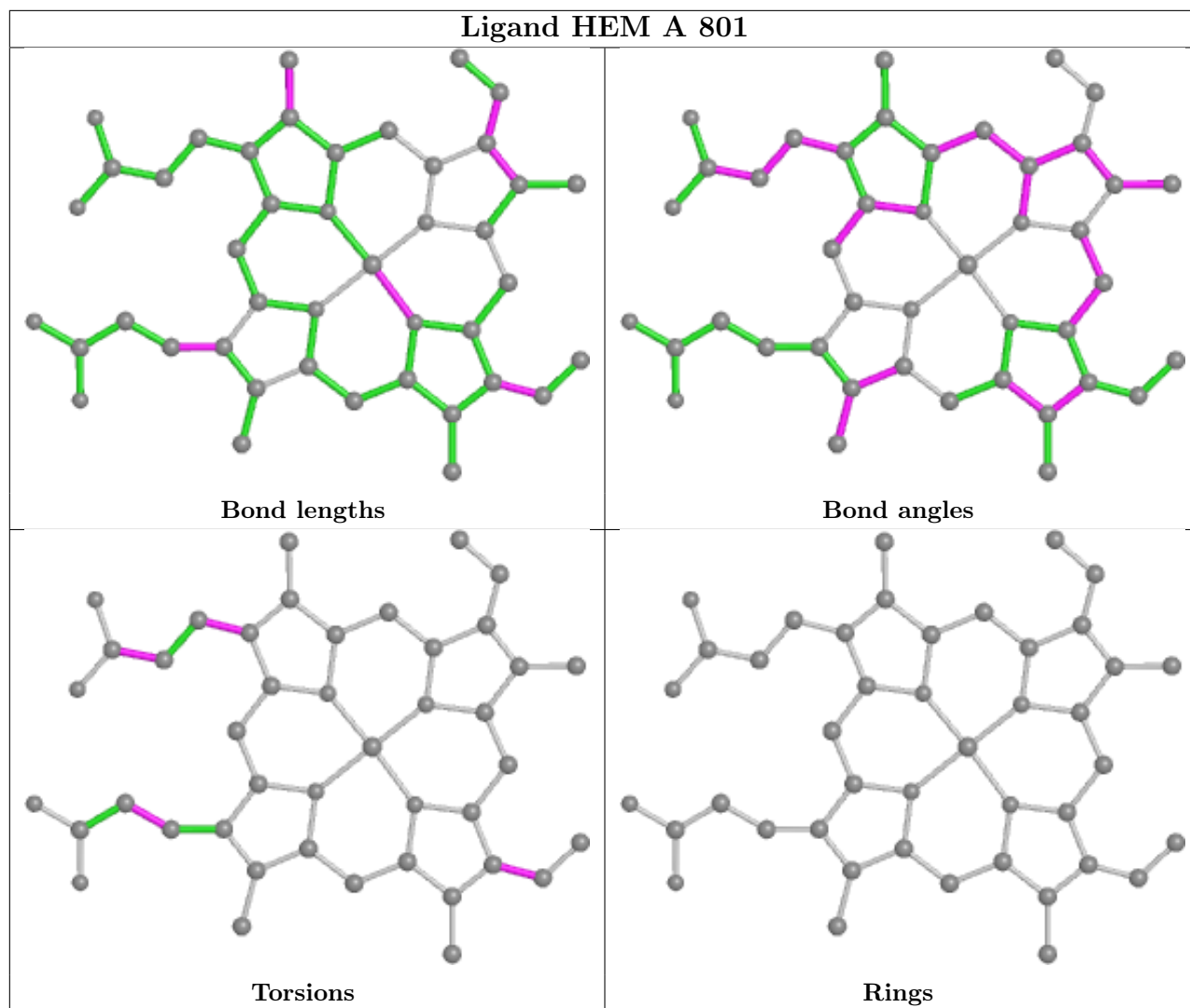
All (17) torsion outliers are listed below:

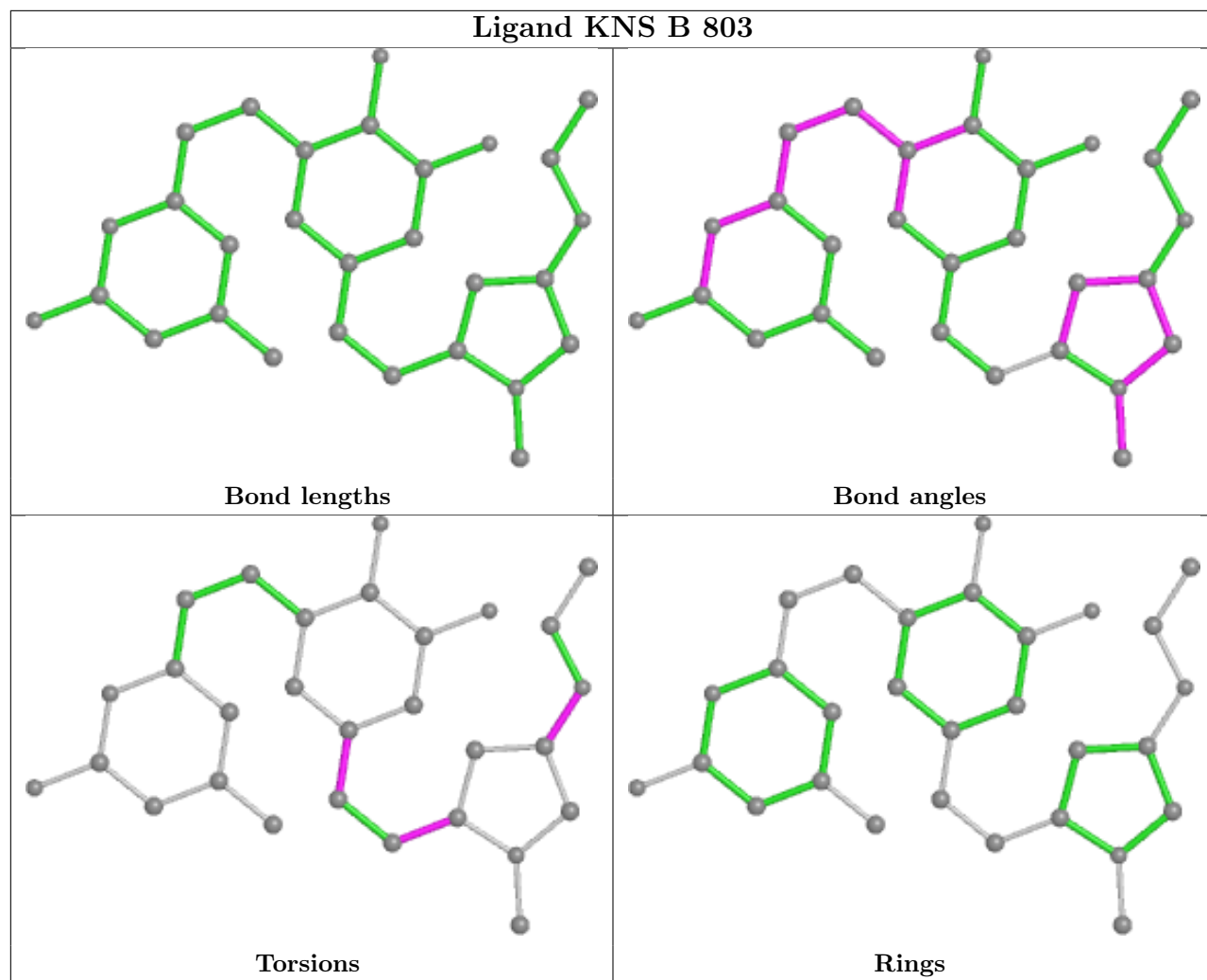
Mol	Chain	Res	Type	Atoms
4	B	803	KNS	C17-C18-C25-C24
4	B	803	KNS	C17-C18-C25-N21
2	A	801	HEM	C2A-CAA-CBA-CGA
2	B	801	HEM	C2A-CAA-CBA-CGA
2	A	801	HEM	C4D-C3D-CAD-CBD
2	A	801	HEM	C2D-C3D-CAD-CBD
4	B	803	KNS	C24-C23-O26-C27
2	A	801	HEM	C4B-C3B-CAB-CBB
2	B	801	HEM	C4B-C3B-CAB-CBB
4	A	803	KNS	C14-C15-C17-C18
4	B	803	KNS	C22-C23-O26-C27
4	A	803	KNS	C16-C15-C17-C18
4	B	803	KNS	C14-C15-C17-C18
2	A	801	HEM	CAD-CBD-CGD-O2D
2	A	801	HEM	CAD-CBD-CGD-O1D
4	B	803	KNS	C16-C15-C17-C18
4	A	803	KNS	C17-C18-C25-N21

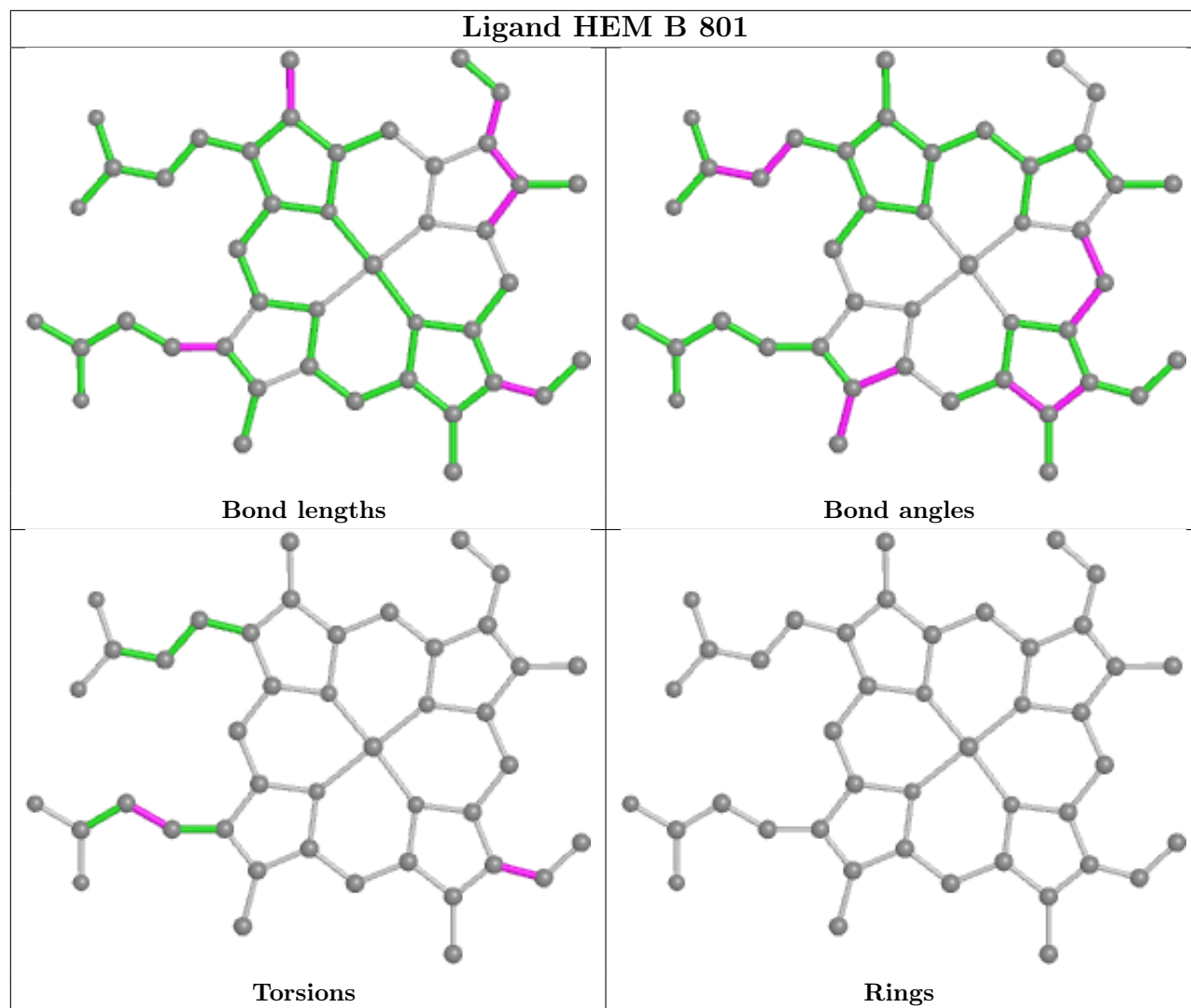
There are no ring outliers.

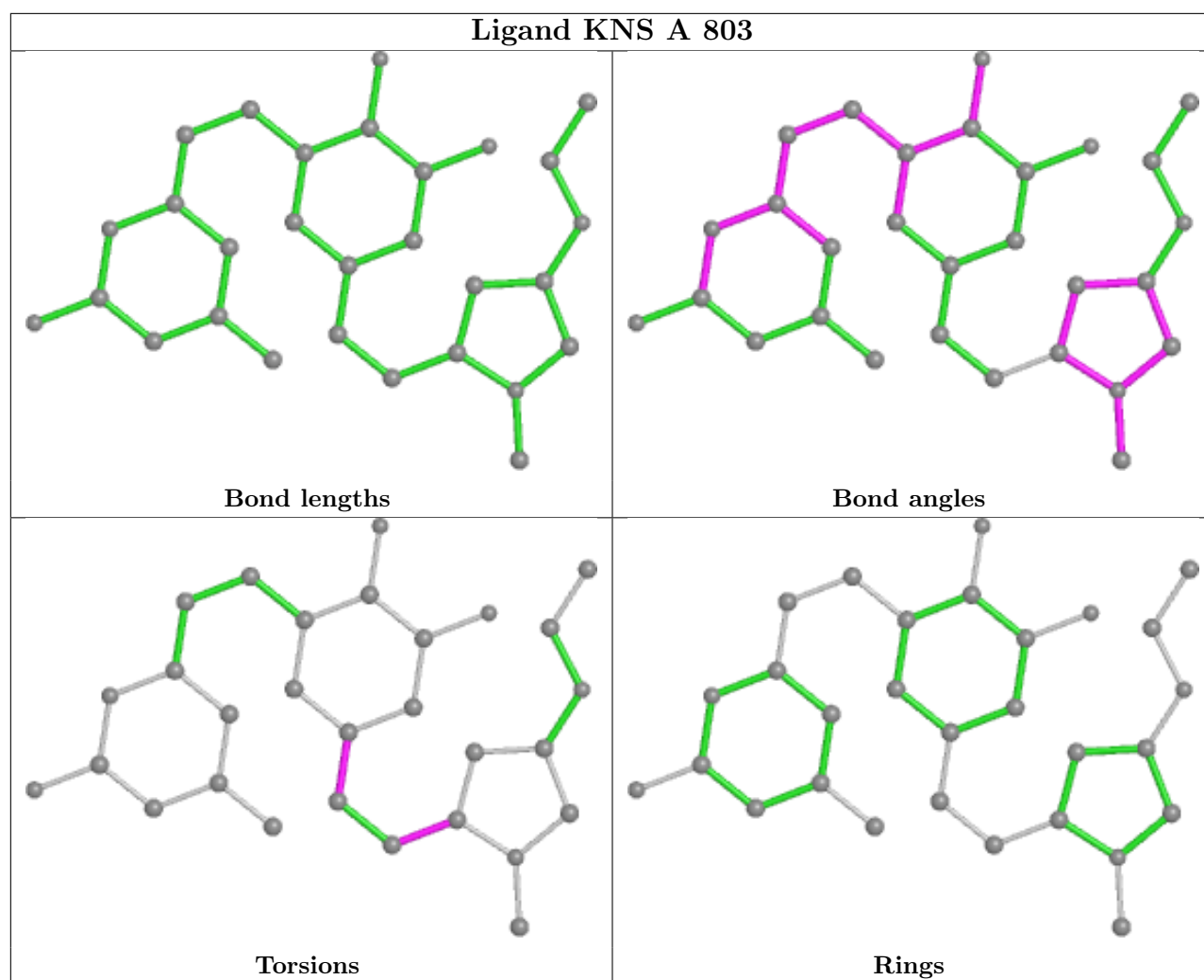
No monomer is involved in short contacts.

The following is a two-dimensional graphical depiction of Mogul quality analysis of bond lengths, bond angles, torsion angles, and ring geometry for all instances of the Ligand of Interest. In addition, ligands with molecular weight > 250 and outliers as shown on the validation Tables will also be included. For torsion angles, if less than 5% of the Mogul distribution of torsion angles is within 10 degrees of the torsion angle in question, then that torsion angle is considered an outlier. Any bond that is central to one or more torsion angles identified as an outlier by Mogul will be highlighted in the graph. For rings, the root-mean-square deviation (RMSD) between the ring in question and similar rings identified by Mogul is calculated over all ring torsion angles. If the average RMSD is greater than 60 degrees and the minimal RMSD between the ring in question and any Mogul-identified rings is also greater than 60 degrees, then that ring is considered an outlier. The outliers are highlighted in purple. The color gray indicates Mogul did not find sufficient equivalents in the CSD to analyse the geometry.









#### 4.7 Other polymers [\(i\)](#)

There are no such residues in this entry.

#### 4.8 Polymer linkage issues [\(i\)](#)

There are no chain breaks in this entry.

## 5 Fit of model and data [i](#)

### 5.1 Protein, DNA and RNA chains [i](#)

EDS failed to run properly - this section is therefore empty.

### 5.2 Non-standard residues in protein, DNA, RNA chains [i](#)

EDS failed to run properly - this section is therefore empty.

### 5.3 Carbohydrates [i](#)

EDS failed to run properly - this section is therefore empty.

### 5.4 Ligands [i](#)

EDS failed to run properly - this section is therefore empty.

### 5.5 Other polymers [i](#)

EDS failed to run properly - this section is therefore empty.