



Full wwPDB X-ray Structure Validation Report ⓘ

Oct 2, 2023 – 05:17 AM EDT

PDB ID : 6NIC
Title : Crystal Structure of Medicago truncatula Agmatine Iminohydrolase (Deiminase) in Complex with 6-aminohexanamide
Authors : Sekula, B.; Dauter, Z.
Deposited on : 2018-12-27
Resolution : 2.20 Å(reported)

This is a Full wwPDB X-ray Structure Validation Report for a publicly released PDB entry.

We welcome your comments at validation@mail.wwpdb.org

A user guide is available at

<https://www.wwpdb.org/validation/2017/XrayValidationReportHelp>

with specific help available everywhere you see the ⓘ symbol.

The types of validation reports are described at

<http://www.wwpdb.org/validation/2017/FAQs#types>.

The following versions of software and data (see [references ⓘ](#)) were used in the production of this report:

MolProbity : **FAILED**
Mogul : 1.8.5 (274361), CSD as541be (2020)
Xtrriage (Phenix) : 1.13
EDS : **FAILED**
Percentile statistics : 20191225.v01 (using entries in the PDB archive December 25th 2019)
Ideal geometry (proteins) : Engh & Huber (2001)
Ideal geometry (DNA, RNA) : Parkinson et al. (1996)
Validation Pipeline (wwPDB-VP) : 2.35.1

1 Overall quality at a glance

The following experimental techniques were used to determine the structure:

X-RAY DIFFRACTION

The reported resolution of this entry is 2.20 Å.

There are no overall percentile quality scores available for this entry.

MolProbity and EDS failed to run properly - the sequence quality summary graphics cannot be shown.

2 Entry composition [i](#)

There are 7 unique types of molecules in this entry. The entry contains 12204 atoms, of which 0 are hydrogens and 0 are deuteriums.

In the tables below, the ZeroOcc column contains the number of atoms modelled with zero occupancy, the AltConf column contains the number of residues with at least one atom in alternate conformation and the Trace column contains the number of residues modelled with at most 2 atoms.

- Molecule 1 is a protein called Porphyromonas-type peptidyl-arginine deiminase.

Mol	Chain	Residues	Atoms					ZeroOcc	AltConf	Trace
			Total	C	N	O	S			
1	A	356	2827	1782	501	531	13	0	0	0
1	B	356	2827	1782	501	531	13	0	0	0
1	C	358	2840	1789	503	535	13	0	0	0
1	D	360	2857	1799	507	538	13	0	0	0

There are 12 discrepancies between the modelled and reference sequences:

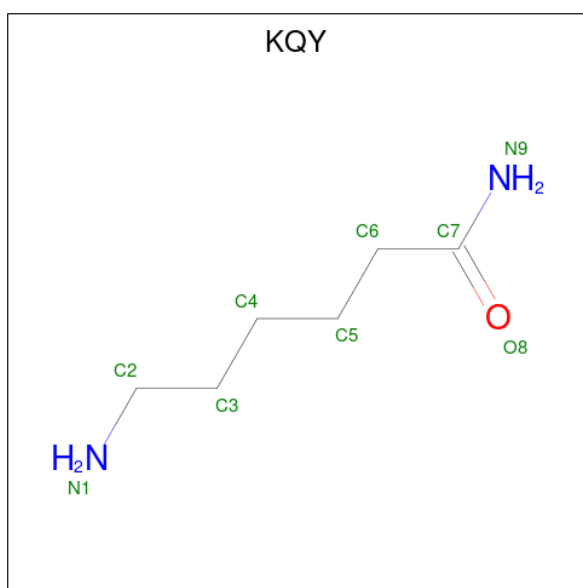
Chain	Residue	Modelled	Actual	Comment	Reference
A	8	SER	-	expression tag	UNP G7JT50
A	9	ASN	-	expression tag	UNP G7JT50
A	10	ALA	-	expression tag	UNP G7JT50
B	8	SER	-	expression tag	UNP G7JT50
B	9	ASN	-	expression tag	UNP G7JT50
B	10	ALA	-	expression tag	UNP G7JT50
C	8	SER	-	expression tag	UNP G7JT50
C	9	ASN	-	expression tag	UNP G7JT50
C	10	ALA	-	expression tag	UNP G7JT50
D	8	SER	-	expression tag	UNP G7JT50
D	9	ASN	-	expression tag	UNP G7JT50
D	10	ALA	-	expression tag	UNP G7JT50

- Molecule 2 is TRIETHYLENE GLYCOL (three-letter code: PGE) (formula: C₆H₁₄O₄).



Mol	Chain	Residues	Atoms			ZeroOcc	AltConf
2	A	1	Total	C	O	0	0
			10	6	4		
2	A	1	Total	C	O	0	0
			10	6	4		

- Molecule 3 is 6-aminohexanamide (three-letter code: KQY) (formula: $C_6H_{14}N_2O$).



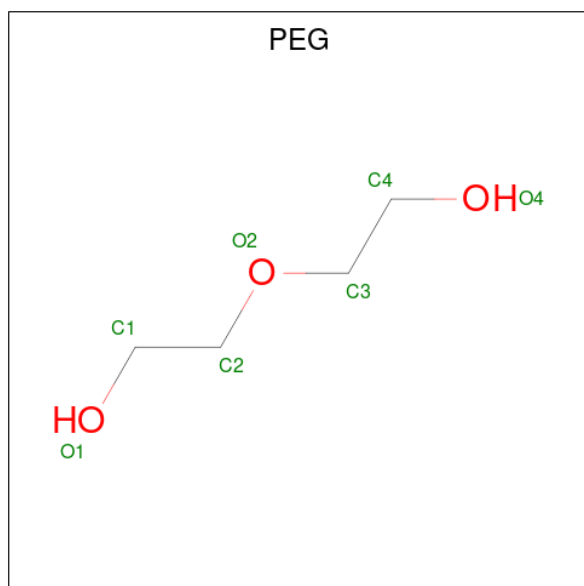
Mol	Chain	Residues	Atoms				ZeroOcc	AltConf
3	A	1	Total	C	N	O	0	0
			9	6	2	1		
3	C	1	Total	C	N	O	0	0
			9	6	2	1		

Continued on next page...

Continued from previous page...

Mol	Chain	Residues	Atoms				ZeroOcc	AltConf
			Total	C	N	O		
3	D	1	9	6	2	1	0	0

- Molecule 4 is DI(HYDROXYETHYL)ETHER (three-letter code: PEG) (formula: C₄H₁₀O₃).



Mol	Chain	Residues	Atoms			ZeroOcc	AltConf
			Total	C	O		
4	A	1	7	4	3	0	0
4	A	1	7	4	3	0	0
4	B	1	7	4	3	0	0

- Molecule 5 is SODIUM ION (three-letter code: NA) (formula: Na).

Mol	Chain	Residues	Atoms		ZeroOcc	AltConf
			Total	Na		
5	A	1	1	1	0	0
5	B	1	1	1	0	0
5	C	1	1	1	0	0
5	D	1	1	1	0	0

- Molecule 6 is 1,2-ETHANEDIOL (three-letter code: EDO) (formula: C₂H₆O₂).



Mol	Chain	Residues	Atoms	ZeroOcc	AltConf
6	C	1	Total C O 4 2 2	0	0
6	D	1	Total C O 4 2 2	0	0

- Molecule 7 is water.

Mol	Chain	Residues	Atoms	ZeroOcc	AltConf
7	A	220	Total O 220 220	0	0
7	B	90	Total O 90 90	0	0
7	C	299	Total O 299 299	0	0
7	D	164	Total O 164 164	0	0

MolProbity and EDS failed to run properly - this section is therefore empty.

3 Data and refinement statistics

EDS failed to run properly - this section is therefore incomplete.

Property	Value	Source
Space group	P 61 2 2	Depositor
Cell constants a, b, c, α , β , γ	142.44Å 142.44Å 345.43Å 90.00° 90.00° 120.00°	Depositor
Resolution (Å)	50.19 – 2.20	Depositor
% Data completeness (in resolution range)	76.2 (50.19-2.20)	Depositor
R_{merge}	0.12	Depositor
R_{sym}	(Not available)	Depositor
$\langle I/\sigma(I) \rangle$ ¹	2.92 (at 2.20Å)	Xtriage
Refinement program	REFMAC 5.8.0222	Depositor
R, R_{free}	0.165 , 0.204	Depositor
Wilson B-factor (Å ²)	28.1	Xtriage
Anisotropy	0.239	Xtriage
L-test for twinning ²	$\langle L \rangle = 0.50$, $\langle L^2 \rangle = 0.34$	Xtriage
Estimated twinning fraction	No twinning to report.	Xtriage
Total number of atoms	12204	wwPDB-VP
Average B, all atoms (Å ²)	35.0	wwPDB-VP

Xtriage's analysis on translational NCS is as follows: *The largest off-origin peak in the Patterson function is 2.47% of the height of the origin peak. No significant pseudotranslation is detected.*

¹Intensities estimated from amplitudes.

²Theoretical values of $\langle |L| \rangle$, $\langle L^2 \rangle$ for acentric reflections are 0.5, 0.333 respectively for untwinned datasets, and 0.375, 0.2 for perfectly twinned datasets.

4 Model quality [i](#)

4.1 Standard geometry [i](#)

MolProbity failed to run properly - this section is therefore empty.

4.2 Too-close contacts [i](#)

MolProbity failed to run properly - this section is therefore empty.

4.3 Torsion angles [i](#)

4.3.1 Protein backbone [i](#)

MolProbity failed to run properly - this section is therefore empty.

4.3.2 Protein sidechains [i](#)

MolProbity failed to run properly - this section is therefore empty.

4.3.3 RNA [i](#)

MolProbity failed to run properly - this section is therefore empty.

4.4 Non-standard residues in protein, DNA, RNA chains [i](#)

There are no non-standard protein/DNA/RNA residues in this entry.

4.5 Carbohydrates [i](#)

There are no monosaccharides in this entry.

4.6 Ligand geometry [i](#)

Of 14 ligands modelled in this entry, 4 are monoatomic - leaving 10 for Mogul analysis.

In the following table, the Counts columns list the number of bonds (or angles) for which Mogul statistics could be retrieved, the number of bonds (or angles) that are observed in the model and the number of bonds (or angles) that are defined in the Chemical Component Dictionary. The Link column lists molecule types, if any, to which the group is linked. The Z score for a bond

length (or angle) is the number of standard deviations the observed value is removed from the expected value. A bond length (or angle) with $|Z| > 2$ is considered an outlier worth inspection. RMSZ is the root-mean-square of all Z scores of the bond lengths (or angles).

Mol	Type	Chain	Res	Link	Bond lengths			Bond angles		
					Counts	RMSZ	# Z > 2	Counts	RMSZ	# Z > 2
4	PEG	A	405	-	6,6,6	0.66	0	5,5,5	0.74	0
6	EDO	C	401	-	3,3,3	1.04	0	2,2,2	0.89	0
3	KQY	D	402	-	8,8,8	1.43	2 (25%)	8,8,8	1.42	2 (25%)
3	KQY	A	403	-	8,8,8	1.26	1 (12%)	8,8,8	2.22	3 (37%)
6	EDO	D	401	-	3,3,3	0.47	0	2,2,2	0.58	0
4	PEG	A	404	-	6,6,6	0.55	0	5,5,5	0.13	0
4	PEG	B	401	-	6,6,6	0.71	0	5,5,5	0.54	0
2	PGE	A	402	-	9,9,9	0.94	0	8,8,8	0.77	0
2	PGE	A	401	-	9,9,9	0.88	0	8,8,8	0.93	0
3	KQY	C	402	-	8,8,8	1.65	2 (25%)	8,8,8	1.42	2 (25%)

In the following table, the Chirals column lists the number of chiral outliers, the number of chiral centers analysed, the number of these observed in the model and the number defined in the Chemical Component Dictionary. Similar counts are reported in the Torsion and Rings columns. '-' means no outliers of that kind were identified.

Mol	Type	Chain	Res	Link	Chirals	Torsions	Rings
4	PEG	A	405	-	-	3/4/4/4	-
6	EDO	C	401	-	-	1/1/1/1	-
3	KQY	D	402	-	-	0/6/6/6	-
3	KQY	A	403	-	-	0/6/6/6	-
6	EDO	D	401	-	-	1/1/1/1	-
4	PEG	A	404	-	-	1/4/4/4	-
4	PEG	B	401	-	-	0/4/4/4	-
2	PGE	A	402	-	-	6/7/7/7	-
2	PGE	A	401	-	-	2/7/7/7	-
3	KQY	C	402	-	-	0/6/6/6	-

All (5) bond length outliers are listed below:

Mol	Chain	Res	Type	Atoms	Z	Observed(Å)	Ideal(Å)
3	C	402	KQY	C7-N9	3.83	1.45	1.32
3	D	402	KQY	C7-N9	3.18	1.43	1.32
3	A	403	KQY	C7-N9	2.85	1.42	1.32
3	D	402	KQY	O8-C7	2.15	1.30	1.24
3	C	402	KQY	O8-C7	2.04	1.30	1.24

All (7) bond angle outliers are listed below:

Mol	Chain	Res	Type	Atoms	Z	Observed(°)	Ideal(°)
3	A	403	KQY	O8-C7-C6	4.10	133.11	121.07
3	A	403	KQY	C5-C6-C7	3.72	122.14	113.79
3	D	402	KQY	O8-C7-C6	2.58	128.65	121.07
3	C	402	KQY	O8-C7-C6	2.39	128.10	121.07
3	C	402	KQY	C5-C6-C7	2.30	118.95	113.79
3	A	403	KQY	O8-C7-N9	-2.21	116.46	122.50
3	D	402	KQY	C5-C6-C7	2.16	118.64	113.79

There are no chirality outliers.

All (14) torsion outliers are listed below:

Mol	Chain	Res	Type	Atoms
4	A	405	PEG	C4-C3-O2-C2
2	A	402	PGE	O2-C3-C4-O3
4	A	405	PEG	O2-C3-C4-O4
2	A	402	PGE	O3-C5-C6-O4
2	A	401	PGE	C6-C5-O3-C4
2	A	401	PGE	O3-C5-C6-O4
6	D	401	EDO	O1-C1-C2-O2
4	A	405	PEG	O1-C1-C2-O2
6	C	401	EDO	O1-C1-C2-O2
2	A	402	PGE	C6-C5-O3-C4
2	A	402	PGE	C4-C3-O2-C2
2	A	402	PGE	C3-C4-O3-C5
2	A	402	PGE	C1-C2-O2-C3
4	A	404	PEG	O1-C1-C2-O2

There are no ring outliers.

No monomer is involved in short contacts.

4.7 Other polymers [i](#)

There are no such residues in this entry.

4.8 Polymer linkage issues [i](#)

There are no chain breaks in this entry.

5 Fit of model and data

5.1 Protein, DNA and RNA chains

EDS failed to run properly - this section is therefore empty.

5.2 Non-standard residues in protein, DNA, RNA chains

EDS failed to run properly - this section is therefore empty.

5.3 Carbohydrates

EDS failed to run properly - this section is therefore empty.

5.4 Ligands

EDS failed to run properly - this section is therefore empty.

5.5 Other polymers

EDS failed to run properly - this section is therefore empty.