



# Full wwPDB X-ray Structure Validation Report ⓘ

Mar 3, 2024 – 08:56 PM EST

PDB ID : 6NPV  
Title : C-abl Kinase domain with the activator(cmpd51), N-(1-(3,4-dichlorophenyl)-4-(2-hydroxyethyl)-4,5-dihydro-1H-pyrazol-3-yl)isonicotinamide  
Authors : campobasso, N.  
Deposited on : 2019-01-18  
Resolution : 1.86 Å(reported)

This is a Full wwPDB X-ray Structure Validation Report for a publicly released PDB entry.

We welcome your comments at [validation@mail.wwpdb.org](mailto:validation@mail.wwpdb.org)

A user guide is available at

<https://www.wwpdb.org/validation/2017/XrayValidationReportHelp>

with specific help available everywhere you see the ⓘ symbol.

The types of validation reports are described at

<http://www.wwpdb.org/validation/2017/FAQs#types>.

---

The following versions of software and data (see [references ⓘ](#)) were used in the production of this report:

MolProbity : 4.02b-467  
Mogul : 1.8.5 (274361), CSD as541be (2020)  
Xtriage (Phenix) : 1.13  
EDS : 2.36  
buster-report : 1.1.7 (2018)  
Percentile statistics : 20191225.v01 (using entries in the PDB archive December 25th 2019)  
Refmac : 5.8.0158  
CCP4 : 7.0.044 (Gargrove)  
Ideal geometry (proteins) : Engh & Huber (2001)  
Ideal geometry (DNA, RNA) : Parkinson et al. (1996)  
Validation Pipeline (wwPDB-VP) : 2.36

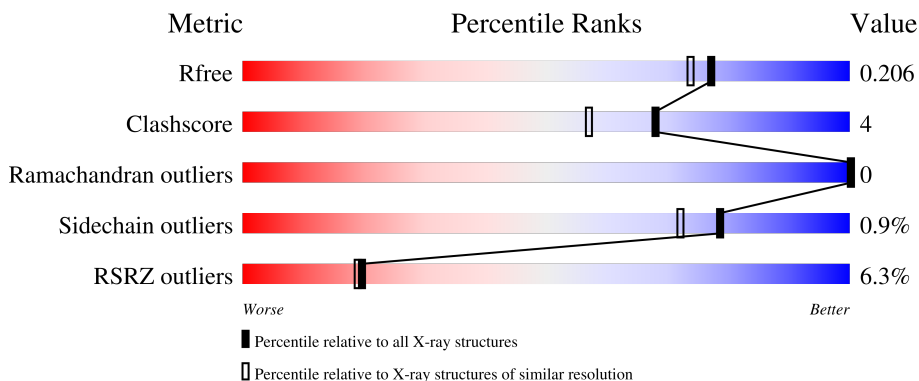
# 1 Overall quality at a glance

The following experimental techniques were used to determine the structure:

*X-RAY DIFFRACTION*

The reported resolution of this entry is 1.86 Å.

Percentile scores (ranging between 0-100) for global validation metrics of the entry are shown in the following graphic. The table shows the number of entries on which the scores are based.



Metric	Whole archive (#Entries)	Similar resolution (#Entries, resolution range(Å))
$R_{free}$	130704	2469 (1.86-1.86)
Clashscore	141614	2625 (1.86-1.86)
Ramachandran outliers	138981	2592 (1.86-1.86)
Sidechain outliers	138945	2592 (1.86-1.86)
RSRZ outliers	127900	2436 (1.86-1.86)

The table below summarises the geometric issues observed across the polymeric chains and their fit to the electron density. The red, orange, yellow and green segments of the lower bar indicate the fraction of residues that contain outliers for  $\geq 3$ , 2, 1 and 0 types of geometric quality criteria respectively. A grey segment represents the fraction of residues that are not modelled. The numeric value for each fraction is indicated below the corresponding segment, with a dot representing fractions  $\leq 5\%$ . The upper red bar (where present) indicates the fraction of residues that have poor fit to the electron density. The numeric value is given above the bar.

Mol	Chain	Length	Quality of chain
1	A	298	 3% 83% 6% 11%
1	B	298	 8% 81% 5% 14%

The following table lists non-polymeric compounds, carbohydrate monomers and non-standard residues in protein, DNA, RNA chains that are outliers for geometric or electron-density-fit criteria:

Mol	Type	Chain	Res	Chirality	Geometry	Clashes	Electron density
5	GOL	B	604	-	-	X	-

## 2 Entry composition i

There are 7 unique types of molecules in this entry. The entry contains 4670 atoms, of which 0 are hydrogens and 0 are deuteriums.

In the tables below, the ZeroOcc column contains the number of atoms modelled with zero occupancy, the AltConf column contains the number of residues with at least one atom in alternate conformation and the Trace column contains the number of residues modelled with at most 2 atoms.

- Molecule 1 is a protein called Tyrosine-protein kinase ABL1.

Mol	Chain	Residues	Atoms					ZeroOcc	AltConf	Trace
			Total	C	N	O	S			
1	A	264	2129	1377	345	391	16	0	0	0
1	B	257	2101	1358	339	388	16	0	1	0

There are 28 discrepancies between the modelled and reference sequences:

Chain	Residue	Modelled	Actual	Comment	Reference
A	234	MET	-	expression tag	UNP P00519
A	235	HIS	-	expression tag	UNP P00519
A	236	HIS	-	expression tag	UNP P00519
A	237	HIS	-	expression tag	UNP P00519
A	238	HIS	-	expression tag	UNP P00519
A	239	HIS	-	expression tag	UNP P00519
A	240	HIS	-	expression tag	UNP P00519
A	241	GLU	-	expression tag	UNP P00519
A	242	ASN	-	expression tag	UNP P00519
A	243	LEU	-	expression tag	UNP P00519
A	244	TYR	-	expression tag	UNP P00519
A	245	PHE	-	expression tag	UNP P00519
A	246	GLN	-	expression tag	UNP P00519
A	247	GLY	-	expression tag	UNP P00519
B	234	MET	-	expression tag	UNP P00519
B	235	HIS	-	expression tag	UNP P00519
B	236	HIS	-	expression tag	UNP P00519
B	237	HIS	-	expression tag	UNP P00519
B	238	HIS	-	expression tag	UNP P00519
B	239	HIS	-	expression tag	UNP P00519
B	240	HIS	-	expression tag	UNP P00519
B	241	GLU	-	expression tag	UNP P00519
B	242	ASN	-	expression tag	UNP P00519
B	243	LEU	-	expression tag	UNP P00519
B	244	TYR	-	expression tag	UNP P00519

*Continued on next page...*

Continued from previous page...

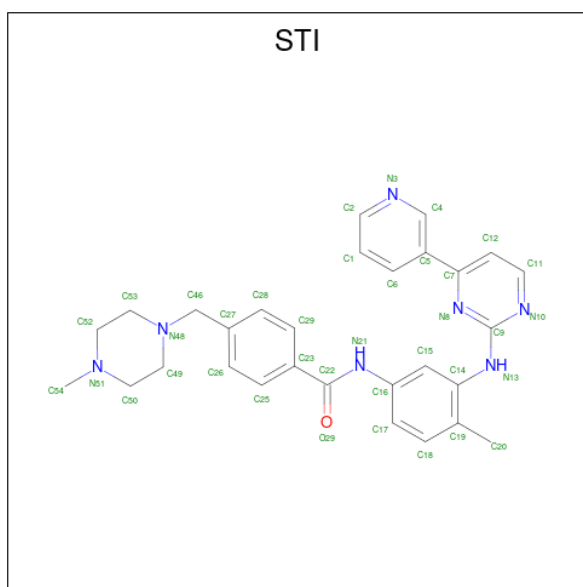
Chain	Residue	Modelled	Actual	Comment	Reference
B	245	PHE	-	expression tag	UNP P00519
B	246	GLN	-	expression tag	UNP P00519
B	247	GLY	-	expression tag	UNP P00519

- Molecule 2 is SULFATE ION (three-letter code: SO4) (formula: O<sub>4</sub>S).



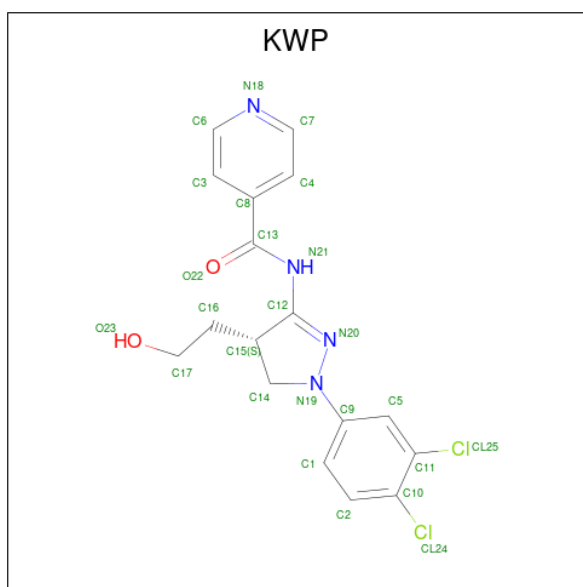
Mol	Chain	Residues	Atoms			ZeroOcc	AltConf
2	A	1	Total	O	S	0	0
			5	4	1		
2	B	1	Total	O	S	0	0
			5	4	1		
2	B	1	Total	O	S	0	0
			5	4	1		

- Molecule 3 is 4-(4-METHYL-PIPERAZIN-1-YLMETHYL)-N-[4-METHYL-3-(4-PYRIDIN-3-YL-PYRIMIDIN-2-YLAMINO)-PHENYL]-BENZAMIDE (three-letter code: STI) (formula: C<sub>29</sub>H<sub>31</sub>N<sub>7</sub>O).



Mol	Chain	Residues	Atoms				ZeroOcc	AltConf
			Total	C	N	O		
3	A	1	37	29	7	1	0	0
3	B	1	37	29	7	1	0	0

- Molecule 4 is {N}-[(4 {S})-2-(3,4-dichlorophenyl)-4-(2-hydroxyethyl)-3,4-dihydropyrazol-5-yl]pyridine-4-carboxamide (three-letter code: KWP) (formula: C<sub>17</sub>H<sub>16</sub>Cl<sub>2</sub>N<sub>4</sub>O<sub>2</sub>) (labeled as "Ligand of Interest" by depositor).



Mol	Chain	Residues	Atoms					ZeroOcc	AltConf
			Total	C	Cl	N	O		
4	A	1	25	17	2	4	2	0	0

*Continued on next page...*

Continued from previous page...

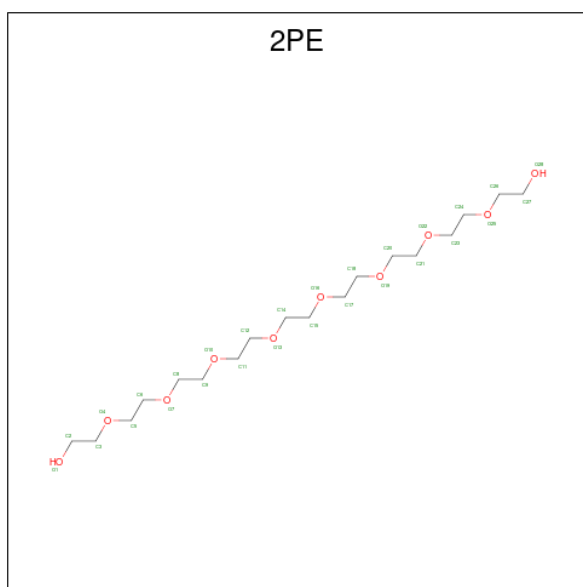
Mol	Chain	Residues	Atoms				ZeroOcc	AltConf	
			Total	C	Cl	N			O
4	B	1	25	17	2	4	2	0	0

- Molecule 5 is GLYCEROL (three-letter code: GOL) (formula:  $C_3H_8O_3$ ).



Mol	Chain	Residues	Atoms			ZeroOcc	AltConf
			Total	C	O		
5	B	1	6	3	3	0	0
5	B	1	6	3	3	0	0

- Molecule 6 is NONAETHYLENE GLYCOL (three-letter code: 2PE) (formula:  $C_{18}H_{38}O_{10}$ ).



Mol	Chain	Residues	Atoms		ZeroOcc	AltConf
6	B	1	Total	C O	0	0
			28	18 10		

- Molecule 7 is water.


Mol	Chain	Residues	Atoms		ZeroOcc	AltConf
7	A	141	Total	O	0	0
			141	141		
7	B	120	Total	O	0	0
			120	120		

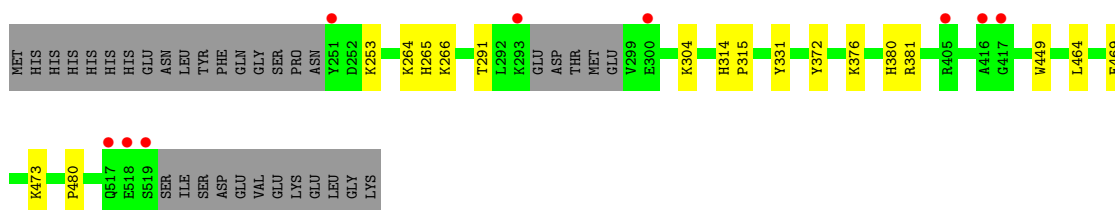


### 3 Residue-property plots [i](#)


These plots are drawn for all protein, RNA, DNA and oligosaccharide chains in the entry. The first graphic for a chain summarises the proportions of the various outlier classes displayed in the second graphic. The second graphic shows the sequence view annotated by issues in geometry and electron density. Residues are color-coded according to the number of geometric quality criteria for which they contain at least one outlier: green = 0, yellow = 1, orange = 2 and red = 3 or more. A red dot above a residue indicates a poor fit to the electron density ( $RSRZ > 2$ ). Stretches of 2 or more consecutive residues without any outlier are shown as a green connector. Residues present in the sample, but not in the model, are shown in grey.

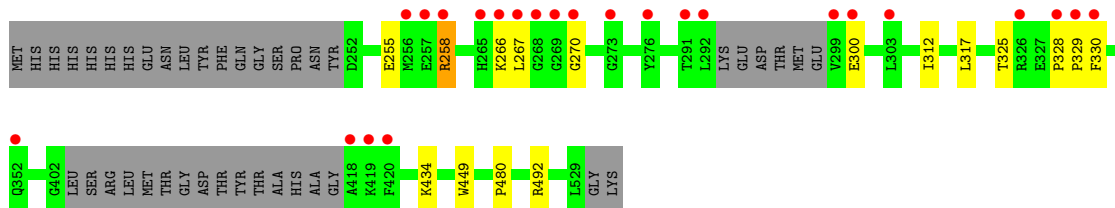
- Molecule 1: Tyrosine-protein kinase ABL1

Chain A: 



- Molecule 1: Tyrosine-protein kinase ABL1

Chain B: 



## 4 Data and refinement statistics

Property	Value	Source
Space group	P 21 21 21	Depositor
Cell constants a, b, c, $\alpha$ , $\beta$ , $\gamma$	74.97Å 95.29Å 115.36Å 90.00° 90.00° 90.00°	Depositor
Resolution (Å)	45.72 – 1.86 45.72 – 1.86	Depositor EDS
% Data completeness (in resolution range)	99.8 (45.72-1.86) 99.8 (45.72-1.86)	Depositor EDS
$R_{merge}$	0.10	Depositor
$R_{sym}$	(Not available)	Depositor
$\langle I/\sigma(I) \rangle$ <sup>1</sup>	2.20 (at 1.86Å)	Xtrriage
Refinement program	PHENIX	Depositor
R, $R_{free}$	0.182 , 0.207 0.182 , 0.206	Depositor DCC
$R_{free}$ test set	3496 reflections (4.99%)	wwPDB-VP
Wilson B-factor (Å <sup>2</sup> )	23.0	Xtrriage
Anisotropy	0.438	Xtrriage
Bulk solvent $k_{sol}$ (e/Å <sup>3</sup> ), $B_{sol}$ (Å <sup>2</sup> )	0.38 , 49.3	EDS
L-test for twinning <sup>2</sup>	$\langle  L  \rangle = 0.49$ , $\langle L^2 \rangle = 0.32$	Xtrriage
Estimated twinning fraction	No twinning to report.	Xtrriage
$F_o, F_c$ correlation	0.96	EDS
Total number of atoms	4670	wwPDB-VP
Average B, all atoms (Å <sup>2</sup> )	27.0	wwPDB-VP

Xtrriage's analysis on translational NCS is as follows: *The largest off-origin peak in the Patterson function is 6.11% of the height of the origin peak. No significant pseudotranslation is detected.*

<sup>1</sup>Intensities estimated from amplitudes.

<sup>2</sup>Theoretical values of  $\langle |L| \rangle$ ,  $\langle L^2 \rangle$  for acentric reflections are 0.5, 0.333 respectively for untwinned datasets, and 0.375, 0.2 for perfectly twinned datasets.

## 5 Model quality

### 5.1 Standard geometry

Bond lengths and bond angles in the following residue types are not validated in this section: SO4, KWP, GOL, STI, 2PE

The Z score for a bond length (or angle) is the number of standard deviations the observed value is removed from the expected value. A bond length (or angle) with  $|Z| > 5$  is considered an outlier worth inspection. RMSZ is the root-mean-square of all Z scores of the bond lengths (or angles).

Mol	Chain	Bond lengths		Bond angles	
		RMSZ	# Z  >5	RMSZ	# Z  >5
1	A	0.39	0/2184	0.55	0/2957
1	B	0.37	0/2156	0.52	0/2915
All	All	0.38	0/4340	0.53	0/5872

There are no bond length outliers.

There are no bond angle outliers.

There are no chirality outliers.

There are no planarity outliers.

### 5.2 Too-close contacts

In the following table, the Non-H and H(model) columns list the number of non-hydrogen atoms and hydrogen atoms in the chain respectively. The H(added) column lists the number of hydrogen atoms added and optimized by MolProbity. The Clashes column lists the number of clashes within the asymmetric unit, whereas Symm-Clashes lists symmetry-related clashes.

Mol	Chain	Non-H	H(model)	H(added)	Clashes	Symm-Clashes
1	A	2129	0	2071	11	0
1	B	2101	0	2057	19	0
2	A	5	0	0	0	0
2	B	10	0	0	0	0
3	A	37	0	31	1	0
3	B	37	0	31	1	0
4	A	25	0	0	0	0
4	B	25	0	0	0	0
5	B	12	0	16	5	0
6	B	28	0	38	7	0
7	A	141	0	0	1	0

*Continued on next page...*

*Continued from previous page...*

Mol	Chain	Non-H	H(model)	H(added)	Clashes	Symm-Clashes
7	B	120	0	0	0	0
All	All	4670	0	4244	33	0

The all-atom clashscore is defined as the number of clashes found per 1000 atoms (including hydrogen atoms). The all-atom clashscore for this structure is 4.

All (33) close contacts within the same asymmetric unit are listed below, sorted by their clash magnitude.

Atom-1	Atom-2	Interatomic distance (Å)	Clash overlap (Å)
1:B:434:LYS:HD2	6:B:606:2PE:H82	1.52	0.92
1:B:434:LYS:HZ1	6:B:606:2PE:H172	1.40	0.85
1:B:258:ARG:NH2	1:B:329:PRO:O	2.16	0.78
1:B:492:ARG:HE	5:B:604:GOL:H2	1.57	0.68
1:B:434:LYS:HZ3	6:B:606:2PE:H61	1.59	0.67
1:B:492:ARG:HH11	5:B:604:GOL:H2	1.62	0.65
1:B:434:LYS:NZ	6:B:606:2PE:H61	2.16	0.61
1:B:434:LYS:NZ	6:B:606:2PE:H172	2.18	0.53
1:A:253:LYS:HD3	1:A:253:LYS:N	2.24	0.53
1:B:492:ARG:NE	5:B:604:GOL:H2	2.25	0.51
1:B:300:GLU:N	1:B:300:GLU:OE2	2.41	0.50
1:A:264:LYS:NZ	7:A:703:HOH:O	2.46	0.48
1:A:291:THR:HG22	1:A:331:TYR:CD1	2.49	0.47
1:A:265:HIS:CD2	1:A:265:HIS:H	2.31	0.47
1:B:449:TRP:CD1	1:B:480:PRO:HG3	2.50	0.46
1:B:267:LEU:HD12	1:B:267:LEU:HA	1.81	0.46
3:A:602:STI:O29	3:A:602:STI:H151	2.15	0.46
1:A:372:TYR:OH	1:A:376:LYS:HE2	2.17	0.45
1:B:328:PRO:HG3	1:B:330:PHE:CZ	2.51	0.45
1:B:255:GLU:OE2	1:B:325:THR:OG1	2.21	0.45
1:B:492:ARG:NH1	5:B:604:GOL:H2	2.28	0.45
1:A:380:HIS:O	1:A:381:ARG:HB2	2.17	0.44
1:B:492:ARG:HH11	5:B:604:GOL:C2	2.30	0.44
1:A:469:GLU:HG2	1:A:473:LYS:HE2	2.01	0.43
1:B:312:ILE:HG23	1:B:317:LEU:HD13	2.01	0.43
6:B:606:2PE:H121	6:B:606:2PE:H271	2.01	0.42
1:A:449:TRP:CD1	1:A:480:PRO:HG3	2.54	0.42
1:A:253:LYS:CD	1:A:253:LYS:H	2.33	0.42
1:B:266:LYS:HD3	1:B:270:GLY:HA2	2.02	0.41
3:B:603:STI:H151	3:B:603:STI:O29	2.20	0.41
1:A:314:HIS:CG	1:A:315:PRO:HD2	2.56	0.41
1:A:253:LYS:N	1:A:253:LYS:CD	2.84	0.41

*Continued on next page...*

*Continued from previous page...*

Atom-1	Atom-2	Interatomic distance (Å)	Clash overlap (Å)
1:B:434:LYS:NZ	6:B:606:2PE:H141	2.35	0.41

There are no symmetry-related clashes.

## 5.3 Torsion angles [i](#)

### 5.3.1 Protein backbone [i](#)

In the following table, the Percentiles column shows the percent Ramachandran outliers of the chain as a percentile score with respect to all X-ray entries followed by that with respect to entries of similar resolution.

The Analysed column shows the number of residues for which the backbone conformation was analysed, and the total number of residues.

Mol	Chain	Analysed	Favoured	Allowed	Outliers	Percentiles	
1	A	260/298 (87%)	253 (97%)	7 (3%)	0	100	100
1	B	252/298 (85%)	245 (97%)	7 (3%)	0	100	100
All	All	512/596 (86%)	498 (97%)	14 (3%)	0	100	100

There are no Ramachandran outliers to report.

### 5.3.2 Protein sidechains [i](#)

In the following table, the Percentiles column shows the percent sidechain outliers of the chain as a percentile score with respect to all X-ray entries followed by that with respect to entries of similar resolution.

The Analysed column shows the number of residues for which the sidechain conformation was analysed, and the total number of residues.

Mol	Chain	Analysed	Rotameric	Outliers	Percentiles	
1	A	224/262 (86%)	221 (99%)	3 (1%)	69	58
1	B	226/262 (86%)	225 (100%)	1 (0%)	91	89
All	All	450/524 (86%)	446 (99%)	4 (1%)	78	72

All (4) residues with a non-rotameric sidechain are listed below:

Mol	Chain	Res	Type
1	A	266	LYS
1	A	304	LYS
1	A	464	LEU
1	B	258	ARG

Sometimes sidechains can be flipped to improve hydrogen bonding and reduce clashes. All (1) such sidechains are listed below:

Mol	Chain	Res	Type
1	A	352	GLN

### 5.3.3 RNA [i](#)

There are no RNA molecules in this entry.

## 5.4 Non-standard residues in protein, DNA, RNA chains [i](#)

There are no non-standard protein/DNA/RNA residues in this entry.

## 5.5 Carbohydrates [i](#)

There are no monosaccharides in this entry.

## 5.6 Ligand geometry [i](#)

10 ligands are modelled in this entry.

In the following table, the Counts columns list the number of bonds (or angles) for which Mogul statistics could be retrieved, the number of bonds (or angles) that are observed in the model and the number of bonds (or angles) that are defined in the Chemical Component Dictionary. The Link column lists molecule types, if any, to which the group is linked. The Z score for a bond length (or angle) is the number of standard deviations the observed value is removed from the expected value. A bond length (or angle) with  $|Z| > 2$  is considered an outlier worth inspection. RMSZ is the root-mean-square of all Z scores of the bond lengths (or angles).

Mol	Type	Chain	Res	Link	Bond lengths			Bond angles		
					Counts	RMSZ	$\# Z  > 2$	Counts	RMSZ	$\# Z  > 2$
6	2PE	B	606	-	27,27,27	0.54	0	26,26,26	0.96	0
4	KWP	A	603	-	26,27,27	1.15	4 (15%)	27,37,37	1.34	4 (14%)
3	STI	A	602	-	40,41,41	0.54	0	51,56,56	0.54	1 (1%)
3	STI	B	603	-	40,41,41	0.53	0	51,56,56	0.57	1 (1%)

Mol	Type	Chain	Res	Link	Bond lengths			Bond angles		
					Counts	RMSZ	# Z  > 2	Counts	RMSZ	# Z  > 2
2	SO4	B	602	-	4,4,4	0.14	0	6,6,6	0.16	0
2	SO4	B	601	-	4,4,4	0.14	0	6,6,6	0.25	0
4	KWP	B	607	-	26,27,27	1.11	3 (11%)	27,37,37	1.28	2 (7%)
5	GOL	B	604	-	5,5,5	0.34	0	5,5,5	0.91	0
5	GOL	B	605	-	5,5,5	0.43	0	5,5,5	0.30	0
2	SO4	A	601	-	4,4,4	0.13	0	6,6,6	0.09	0

In the following table, the Chirals column lists the number of chiral outliers, the number of chiral centers analysed, the number of these observed in the model and the number defined in the Chemical Component Dictionary. Similar counts are reported in the Torsion and Rings columns. '-' means no outliers of that kind were identified.

Mol	Type	Chain	Res	Link	Chirals	Torsions	Rings
6	2PE	B	606	-	-	16/25/25/25	-
4	KWP	A	603	-	-	0/15/27/27	0/3/3/3
3	STI	A	602	-	-	2/16/30/30	0/5/5/5
3	STI	B	603	-	-	1/16/30/30	0/5/5/5
4	KWP	B	607	-	-	3/15/27/27	0/3/3/3
5	GOL	B	604	-	-	4/4/4/4	-
5	GOL	B	605	-	-	0/4/4/4	-

All (7) bond length outliers are listed below:

Mol	Chain	Res	Type	Atoms	Z	Observed(Å)	Ideal(Å)
4	A	603	KWP	N19-N20	3.49	1.43	1.36
4	B	607	KWP	N19-N20	3.41	1.43	1.36
4	B	607	KWP	C13-N21	2.69	1.42	1.37
4	A	603	KWP	C15-C12	-2.63	1.47	1.51
4	A	603	KWP	C13-N21	2.44	1.42	1.37
4	B	607	KWP	C15-C12	-2.23	1.47	1.51
4	A	603	KWP	C8-C13	-2.01	1.46	1.50

All (8) bond angle outliers are listed below:

Mol	Chain	Res	Type	Atoms	Z	Observed(°)	Ideal(°)
4	B	607	KWP	C5-C9-N19	-4.07	117.27	120.27
4	A	603	KWP	C5-C9-N19	-4.04	117.29	120.27
3	B	603	STI	C11-C12-C7	-3.25	116.53	119.31
3	A	602	STI	C11-C12-C7	-3.14	116.63	119.31
4	A	603	KWP	C1-C9-N19	2.42	123.32	120.31
4	B	607	KWP	C1-C9-N19	2.28	123.14	120.31

Continued on next page...

*Continued from previous page...*

Mol	Chain	Res	Type	Atoms	Z	Observed(°)	Ideal(°)
4	A	603	KWP	C6-C3-C8	-2.02	116.84	119.05
4	A	603	KWP	C16-C15-C12	-2.00	107.28	112.96

There are no chirality outliers.

All (26) torsion outliers are listed below:

Mol	Chain	Res	Type	Atoms
3	A	602	STI	C15-C14-N13-C9
3	B	603	STI	C15-C14-N13-C9
4	B	607	KWP	C12-C15-C16-C17
4	B	607	KWP	C14-C15-C16-C17
5	B	604	GOL	O1-C1-C2-C3
5	B	604	GOL	C1-C2-C3-O3
6	B	606	2PE	C27-C26-O25-C24
6	B	606	2PE	C21-C20-O19-C18
6	B	606	2PE	O4-C5-C6-O7
6	B	606	2PE	O10-C11-C12-O13
6	B	606	2PE	O19-C20-C21-O22
6	B	606	2PE	C20-C21-O22-C23
5	B	604	GOL	O2-C2-C3-O3
6	B	606	2PE	C14-C15-O16-C17
5	B	604	GOL	O1-C1-C2-O2
6	B	606	2PE	O1-C2-C3-O4
6	B	606	2PE	C18-C17-O16-C15
6	B	606	2PE	C17-C18-O19-C20
6	B	606	2PE	C24-C23-O22-C21
6	B	606	2PE	C5-C6-O7-C8
4	B	607	KWP	C15-C16-C17-O23
6	B	606	2PE	C23-C24-O25-C26
6	B	606	2PE	O22-C23-C24-O25
6	B	606	2PE	C12-C11-O10-C9
6	B	606	2PE	O13-C14-C15-O16
3	A	602	STI	C19-C14-N13-C9

There are no ring outliers.

4 monomers are involved in 14 short contacts:

Mol	Chain	Res	Type	Clashes	Symm-Clashes
6	B	606	2PE	7	0
3	A	602	STI	1	0
3	B	603	STI	1	0

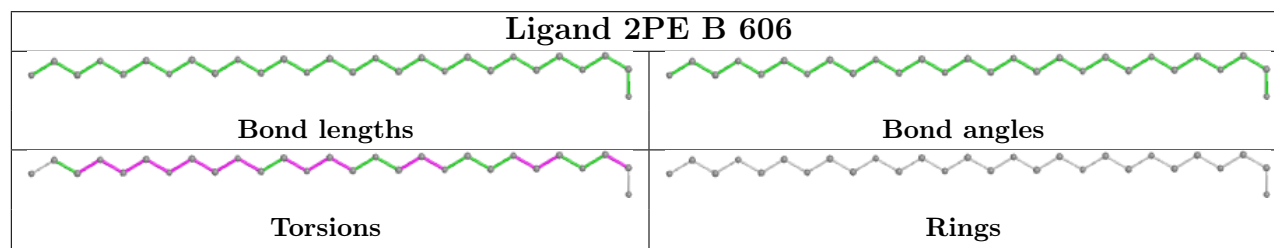
*Continued on next page...*

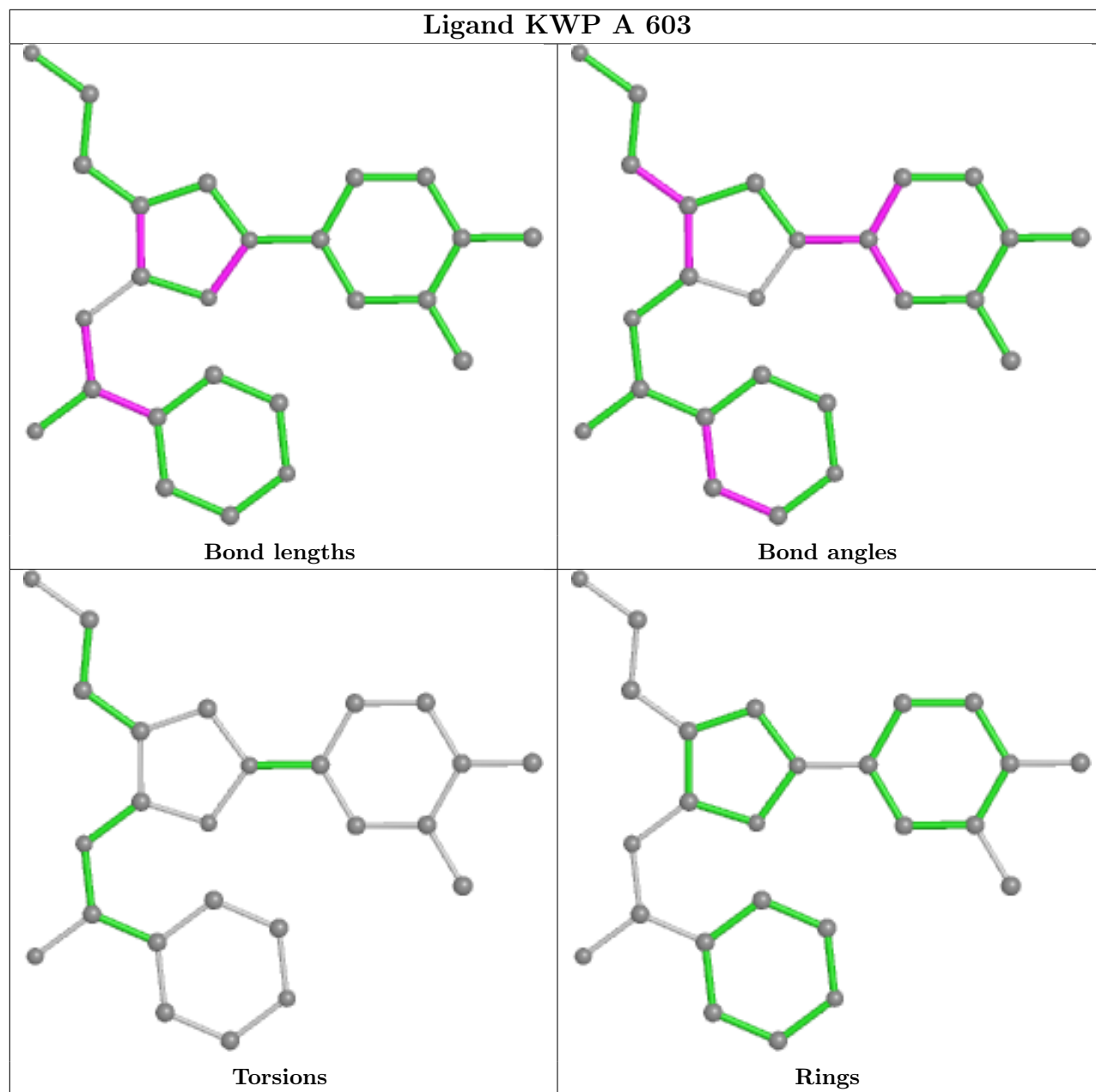


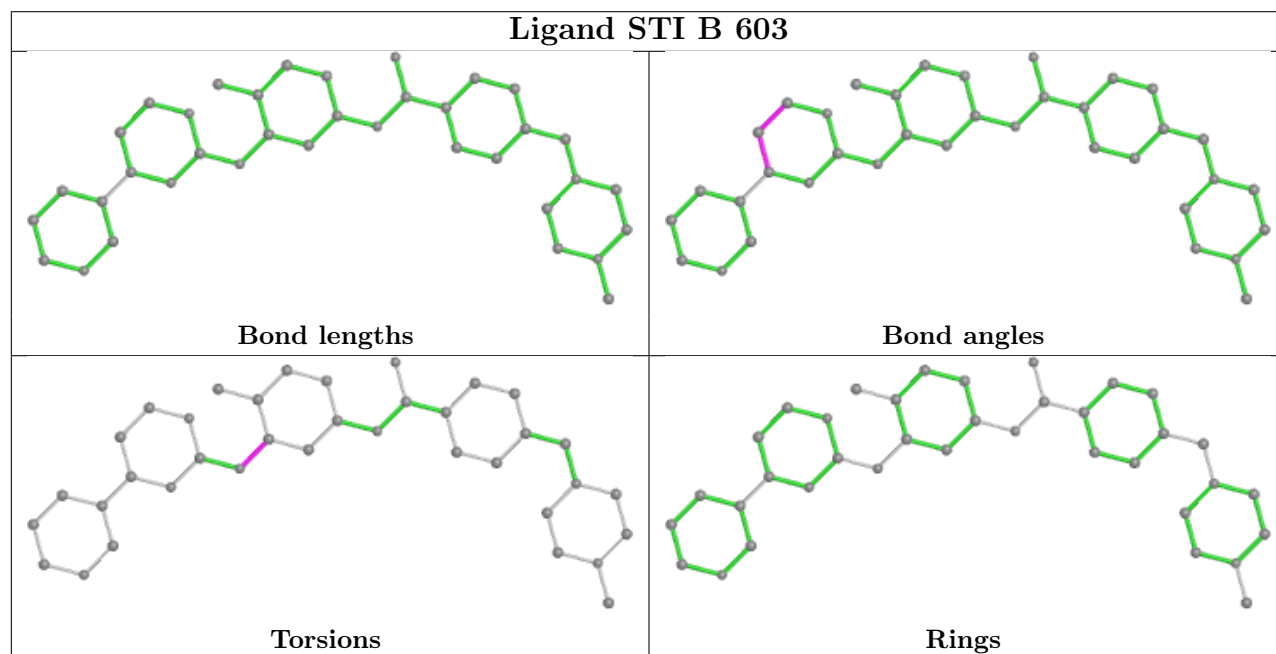
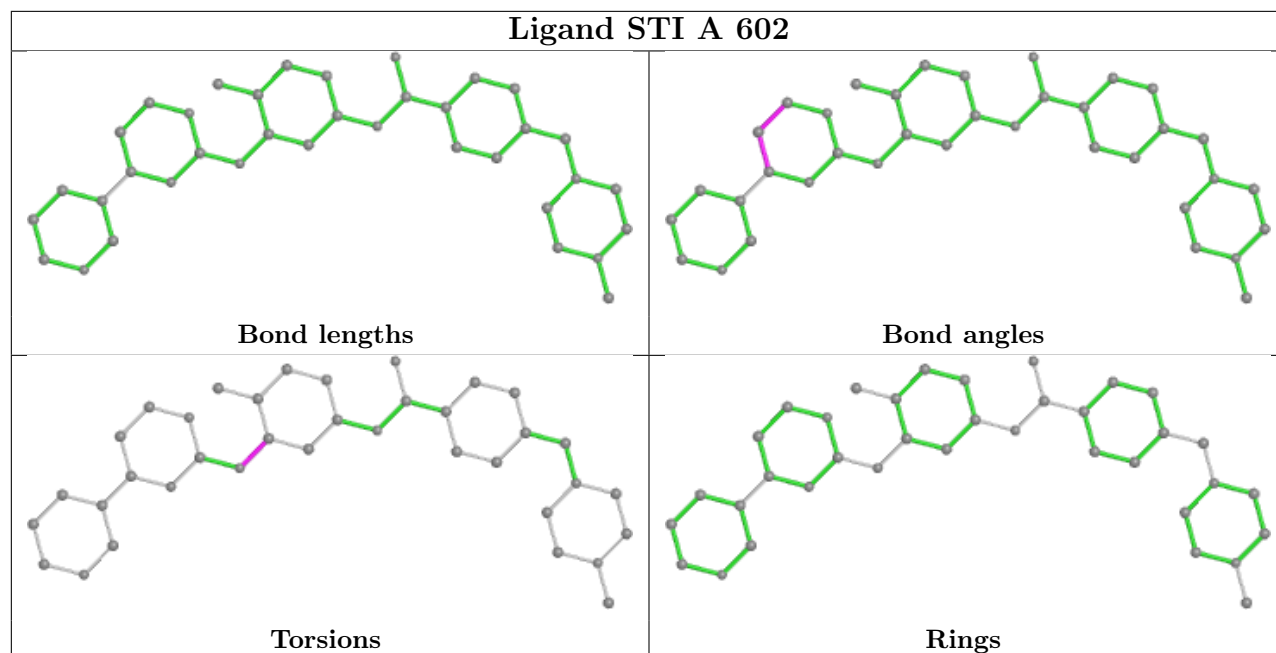
*Continued from previous page...*

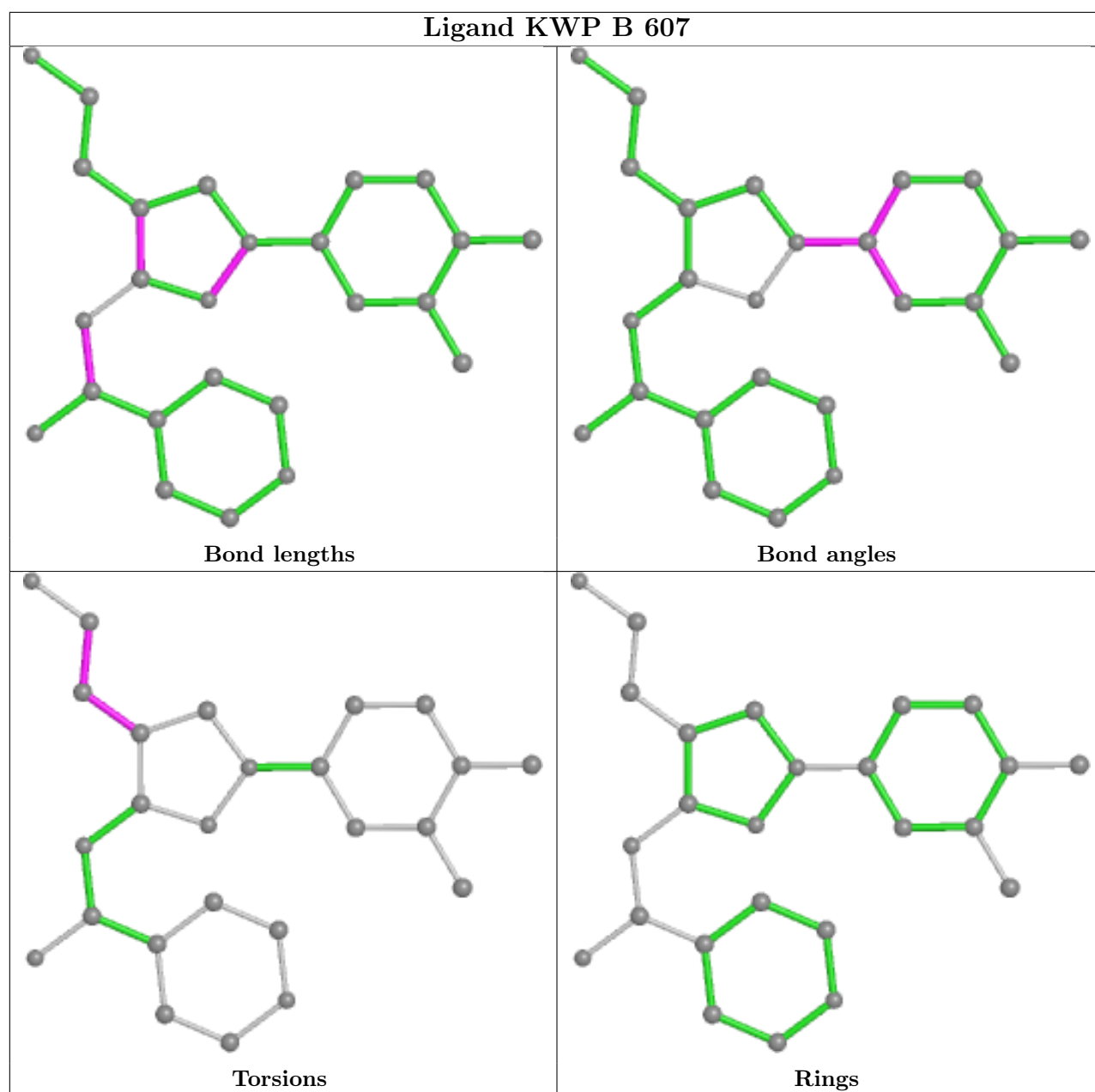
Mol	Chain	Res	Type	Clashes	Symm-Clashes
5	B	604	GOL	5	0

The following is a two-dimensional graphical depiction of Mogul quality analysis of bond lengths, bond angles, torsion angles, and ring geometry for all instances of the Ligand of Interest. In addition, ligands with molecular weight > 250 and outliers as shown on the validation Tables will also be included. For torsion angles, if less than 5% of the Mogul distribution of torsion angles is within 10 degrees of the torsion angle in question, then that torsion angle is considered an outlier. Any bond that is central to one or more torsion angles identified as an outlier by Mogul will be highlighted in the graph. For rings, the root-mean-square deviation (RMSD) between the ring in question and similar rings identified by Mogul is calculated over all ring torsion angles. If the average RMSD is greater than 60 degrees and the minimal RMSD between the ring in question and any Mogul-identified rings is also greater than 60 degrees, then that ring is considered an outlier. The outliers are highlighted in purple. The color gray indicates Mogul did not find sufficient equivalents in the CSD to analyse the geometry.









## 5.7 Other polymers [i](#)

There are no such residues in this entry.

## 5.8 Polymer linkage issues [i](#)

There are no chain breaks in this entry.

## 6 Fit of model and data

### 6.1 Protein, DNA and RNA chains

In the following table, the column labelled ‘#RSRZ> 2’ contains the number (and percentage) of RSRZ outliers, followed by percent RSRZ outliers for the chain as percentile scores relative to all X-ray entries and entries of similar resolution. The OWAB column contains the minimum, median, 95<sup>th</sup> percentile and maximum values of the occupancy-weighted average B-factor per residue. The column labelled ‘Q< 0.9’ lists the number of (and percentage) of residues with an average occupancy less than 0.9.

Mol	Chain	Analysed	<RSRZ>	#RSRZ>2	OWAB(Å <sup>2</sup> )	Q<0.9
1	A	264/298 (88%)	0.08	9 (3%) 45 42	13, 23, 45, 57	0
1	B	257/298 (86%)	0.30	24 (9%) 8 8	13, 24, 58, 75	0
All	All	521/596 (87%)	0.19	33 (6%) 20 19	13, 23, 51, 75	0

All (33) RSRZ outliers are listed below:

Mol	Chain	Res	Type	RSRZ
1	B	418	ALA	7.4
1	B	420	PHE	6.1
1	B	269	GLY	5.0
1	B	292	LEU	5.0
1	B	268	GLY	4.8
1	B	265	HIS	4.6
1	B	270	GLY	4.1
1	B	330	PHE	3.9
1	B	328	PRO	3.7
1	A	405	ARG	3.7
1	B	267	LEU	3.7
1	A	251	TYR	3.6
1	B	329	PRO	3.6
1	B	419	LYS	3.4
1	B	258	ARG	3.4
1	A	416	ALA	3.4
1	A	300	GLU	3.2
1	A	293	LYS	3.1
1	B	291	THR	2.9
1	A	519	SER	2.9
1	B	276	TYR	2.9
1	B	273	GLY	2.9
1	B	326	ARG	2.6
1	A	517	GLN	2.6

*Continued on next page...*

*Continued from previous page...*

Mol	Chain	Res	Type	RSRZ
1	B	303	LEU	2.5
1	B	300	GLU	2.5
1	A	417	GLY	2.4
1	A	518	GLU	2.3
1	B	257	GLU	2.3
1	B	299	VAL	2.3
1	B	266	LYS	2.2
1	B	256	MET	2.1
1	B	352	GLN	2.0

## 6.2 Non-standard residues in protein, DNA, RNA chains [i](#)

There are no non-standard protein/DNA/RNA residues in this entry.

## 6.3 Carbohydrates [i](#)

There are no monosaccharides in this entry.

## 6.4 Ligands [i](#)

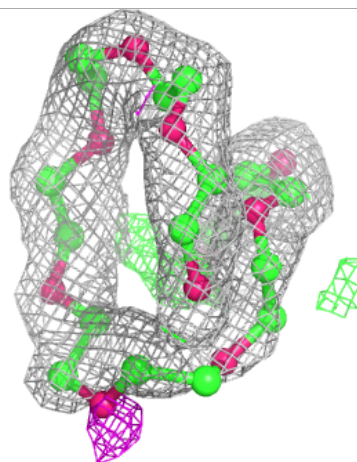
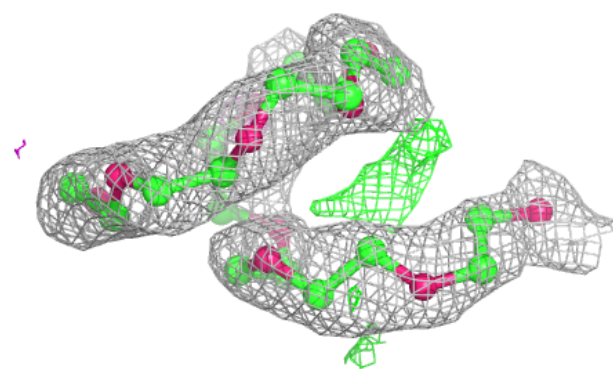
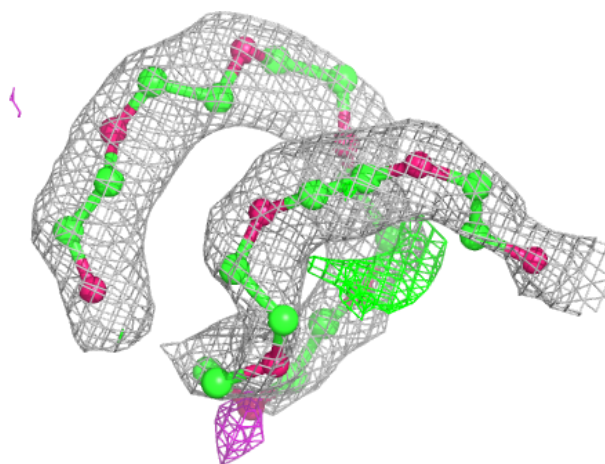
In the following table, the Atoms column lists the number of modelled atoms in the group and the number defined in the chemical component dictionary. The B-factors column lists the minimum, median, 95<sup>th</sup> percentile and maximum values of B factors of atoms in the group. The column labelled 'Q< 0.9' lists the number of atoms with occupancy less than 0.9.

Mol	Type	Chain	Res	Atoms	RSCC	RSR	B-factors(Å <sup>2</sup> )	Q<0.9
2	SO4	B	602	5/5	0.74	0.32	48,66,75,79	0
5	GOL	B	605	6/6	0.78	0.20	24,33,35,36	0
6	2PE	B	606	28/28	0.78	0.22	40,49,55,61	0
5	GOL	B	604	6/6	0.93	0.14	17,32,37,37	0
3	STI	B	603	37/37	0.95	0.11	23,28,31,32	0
2	SO4	B	601	5/5	0.95	0.12	33,38,41,45	0
2	SO4	A	601	5/5	0.96	0.24	49,50,55,56	0
3	STI	A	602	37/37	0.96	0.11	15,19,27,29	0
4	KWP	B	607	25/25	0.97	0.09	15,21,28,36	0
4	KWP	A	603	25/25	0.97	0.08	17,22,28,37	0

The following is a graphical depiction of the model fit to experimental electron density of all instances of the Ligand of Interest. In addition, ligands with molecular weight > 250 and outliers as shown on the geometry validation Tables will also be included. Each fit is shown from different orientation to approximate a three-dimensional view.

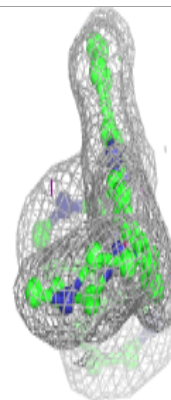
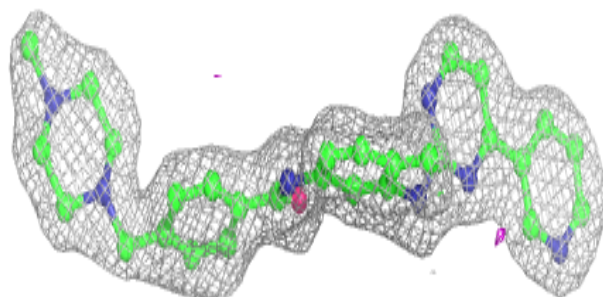
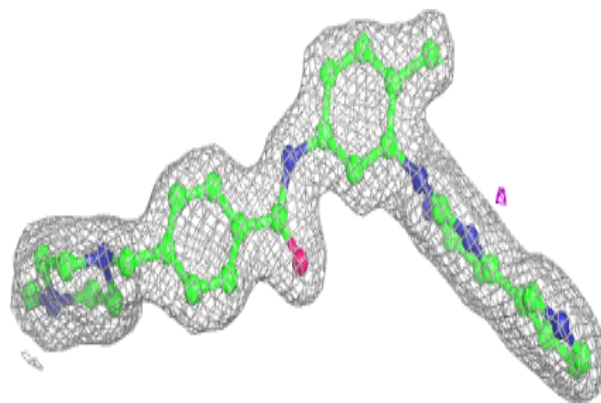
**Electron density around 2PE B 606:**

$2mF_o-DF_c$  (at 0.7 rmsd) in gray  
 $mF_o-DF_c$  (at 3 rmsd) in purple (negative)  
and green (positive)

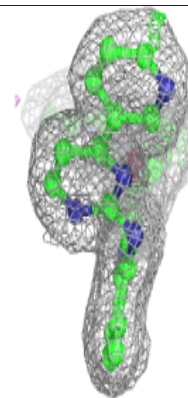
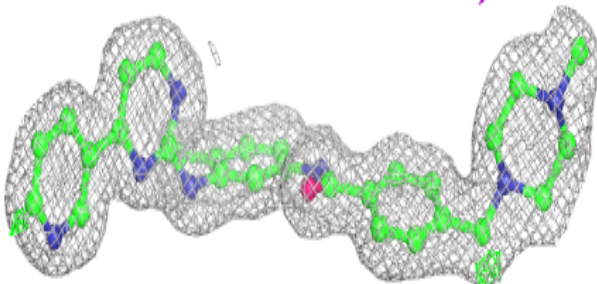
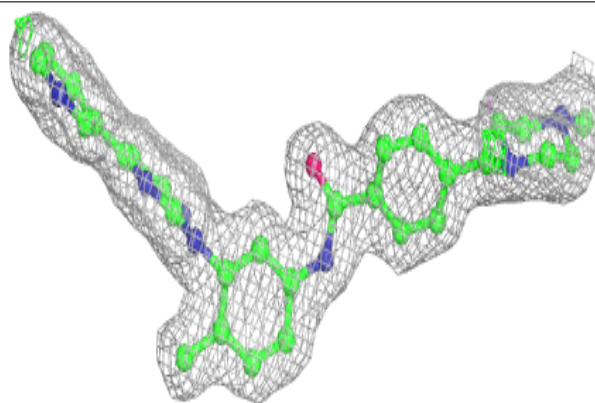


**Electron density around STI B 603:**

$2mF_o-DF_c$  (at 0.7 rmsd) in gray  
 $mF_o-DF_c$  (at 3 rmsd) in purple (negative)  
and green (positive)

**Electron density around STI A 602:**

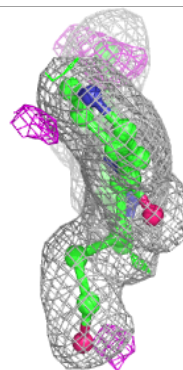
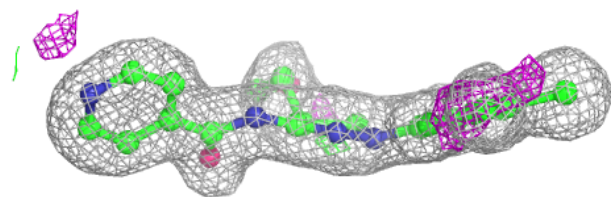
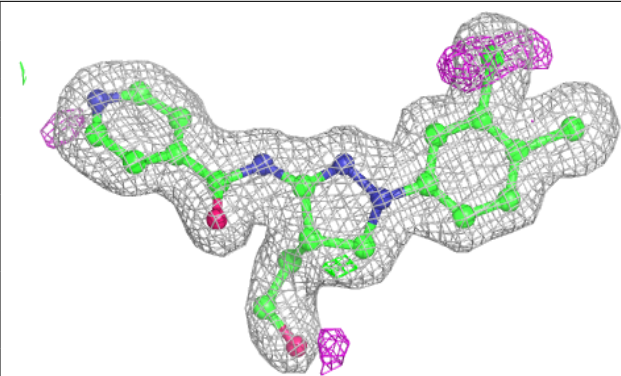
$2mF_o-DF_c$  (at 0.7 rmsd) in gray  
 $mF_o-DF_c$  (at 3 rmsd) in purple (negative)  
and green (positive)



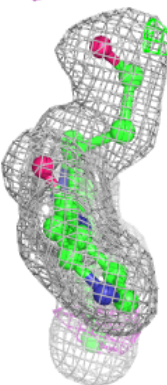
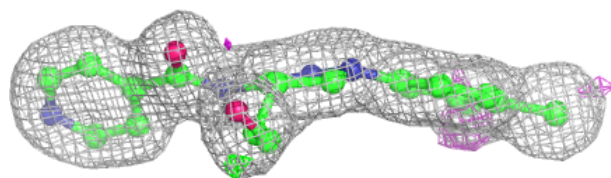
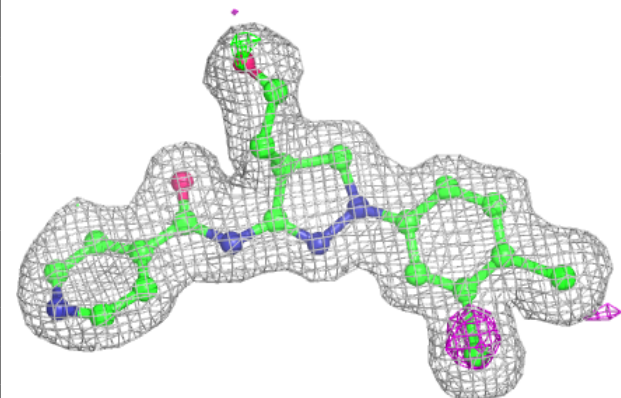


**Electron density around KWP B 607:**

$2mF_o-DF_c$  (at 0.7 rmsd) in gray  
 $mF_o-DF_c$  (at 3 rmsd) in purple (negative)  
and green (positive)

**Electron density around KWP A 603:**

$2mF_o-DF_c$  (at 0.7 rmsd) in gray  
 $mF_o-DF_c$  (at 3 rmsd) in purple (negative)  
and green (positive)



## 6.5 Other polymers [i](#)

There are no such residues in this entry.