



Full wwPDB EM Validation Report ⓘ

Dec 19, 2022 – 10:30 am GMT

PDB ID : 7NRI
EMDB ID : EMD-12546
Title : Structure of the darobactin-bound E. coli BAM complex (BamABCDE)
Authors : Jakob, R.P.; Kaur, H.; Marzinek, J.K.; Green, R.; Imai, Y.; Bolla, J.; Robinson, C.; Bond, P.J.; Lewis, K.; Maier, T.; Hiller, S.
Deposited on : 2021-03-03
Resolution : 3.03 Å(reported)
Based on initial model : 5D0O

This is a Full wwPDB EM Validation Report for a publicly released PDB entry.

We welcome your comments at validation@mail.wwpdb.org

A user guide is available at

<https://www.wwpdb.org/validation/2017/EMValidationReportHelp>

with specific help available everywhere you see the ⓘ symbol.

The types of validation reports are described at

<http://www.wwpdb.org/validation/2017/FAQs#types>.

The following versions of software and data (see [references ⓘ](#)) were used in the production of this report:

EMDB validation analysis : 0.0.1.dev43
Mogul : 1.8.4, CSD as541be (2020)
MolProbity : 4.02b-467
Percentile statistics : 20191225.v01 (using entries in the PDB archive December 25th 2019)
MapQ : 1.9.9
Ideal geometry (proteins) : Engh & Huber (2001)
Ideal geometry (DNA, RNA) : Parkinson et al. (1996)
Validation Pipeline (wwPDB-VP) : 2.31.3

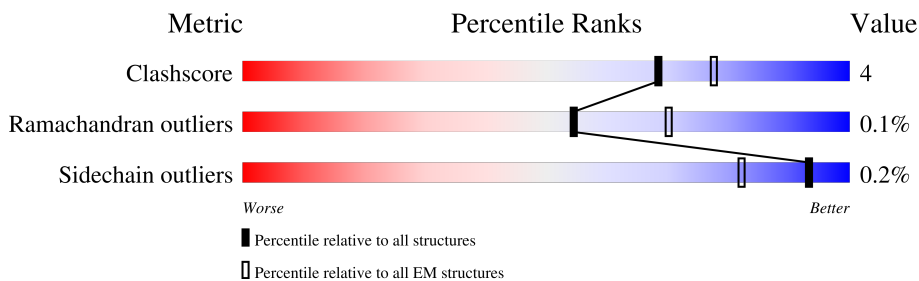
1 Overall quality at a glance i

The following experimental techniques were used to determine the structure:

ELECTRON MICROSCOPY

The reported resolution of this entry is 3.03 Å.

Percentile scores (ranging between 0-100) for global validation metrics of the entry are shown in the following graphic. The table shows the number of entries on which the scores are based.



Metric	Whole archive (#Entries)	EM structures (#Entries)
Clashscore	158937	4297
Ramachandran outliers	154571	4023
Sidechain outliers	154315	3826

The table below summarises the geometric issues observed across the polymeric chains and their fit to the map. The red, orange, yellow and green segments of the bar indicate the fraction of residues that contain outliers for ≥ 3 , 2, 1 and 0 types of geometric quality criteria respectively. A grey segment represents the fraction of residues that are not modelled. The numeric value for each fraction is indicated below the corresponding segment, with a dot representing fractions $\leq 5\%$. The upper red bar (where present) indicates the fraction of residues that have poor fit to the EM map (all-atom inclusion $< 40\%$). The numeric value is given above the bar.

Mol	Chain	Length	Quality of chain
1	A	788	
2	B	381	
3	C	320	
4	D	226	
5	E	102	
6	G	7	

2 Entry composition

There are 6 unique types of molecules in this entry. The entry contains 23151 atoms, of which 11359 are hydrogens and 0 are deuteriums.

In the tables below, the AltConf column contains the number of residues with at least one atom in alternate conformation and the Trace column contains the number of residues modelled with at most 2 atoms.

- Molecule 1 is a protein called Outer membrane protein assembly factor BamA.

Mol	Chain	Residues	Atoms						AltConf	Trace
			Total	C	H	N	O	S		
1	A	785	12128	3915	5921	1046	1230	16	0	0

- Molecule 2 is a protein called Outer membrane protein assembly factor BamB.

Mol	Chain	Residues	Atoms						AltConf	Trace
			Total	C	H	N	O	S		
2	B	362	5416	1719	2680	470	541	6	0	0

There are 8 discrepancies between the modelled and reference sequences:

Chain	Residue	Modelled	Actual	Comment	Reference
B	393	TRP	-	expression tag	UNP P77774
B	394	SER	-	expression tag	UNP P77774
B	395	HIS	-	expression tag	UNP P77774
B	396	PRO	-	expression tag	UNP P77774
B	397	GLN	-	expression tag	UNP P77774
B	398	PHE	-	expression tag	UNP P77774
B	399	GLU	-	expression tag	UNP P77774
B	400	LYS	-	expression tag	UNP P77774

- Molecule 3 is a protein called Outer membrane protein assembly factor BamC.

Mol	Chain	Residues	Atoms						AltConf	Trace
			Total	C	H	N	O	S		
3	C	58	844	266	422	74	81	1	0	0

- Molecule 4 is a protein called Outer membrane protein assembly factor BamD.

Mol	Chain	Residues	Atoms						AltConf	Trace
			Total	C	H	N	O	S		
4	D	209	3346	1069	1646	300	324	7	0	0

- Molecule 5 is a protein called Outer membrane protein assembly factor BamE.

Mol	Chain	Residues	Atoms					AltConf	Trace	
			Total	C	H	N	O			S
5	E	84	1291	414	634	113	128	2	0	0

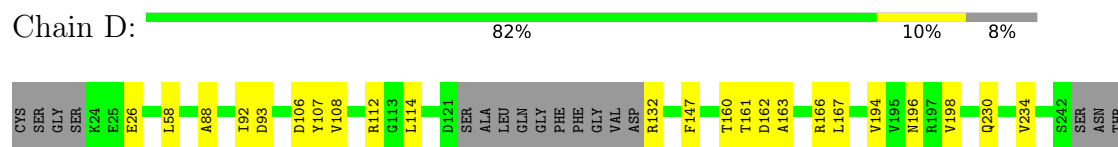
There are 8 discrepancies between the modelled and reference sequences:

Chain	Residue	Modelled	Actual	Comment	Reference
E	114	LYS	-	expression tag	UNP P0A937
E	115	LEU	-	expression tag	UNP P0A937
E	116	HIS	-	expression tag	UNP P0A937
E	117	HIS	-	expression tag	UNP P0A937
E	118	HIS	-	expression tag	UNP P0A937
E	119	HIS	-	expression tag	UNP P0A937
E	120	HIS	-	expression tag	UNP P0A937
E	121	HIS	-	expression tag	UNP P0A937

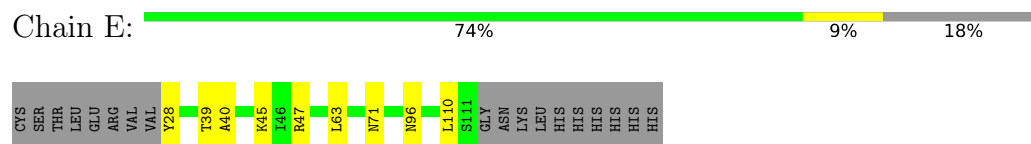
- Molecule 6 is a protein called 3-PYRIDIN-4-YL-2,4-DIHYDRO-INDENO[1,2-.C.]PYRAZO
LE.

Mol	Chain	Residues	Atoms					AltConf	Trace
			Total	C	H	N	O		
6	G	7	126	47	56	11	12	0	0

- Molecule 4: Outer membrane protein assembly factor BamD



- Molecule 5: Outer membrane protein assembly factor BamE



- Molecule 6: 3-PYRIDIN-4-YL-2,4-DIHYDRO-INDENO[1,2-C]PYRAZOLE



4 Experimental information

Property	Value	Source
EM reconstruction method	SINGLE PARTICLE	Depositor
Imposed symmetry	POINT, C1	Depositor
Number of particles used	157474	Depositor
Resolution determination method	FSC 0.143 CUT-OFF	Depositor
CTF correction method	NONE	Depositor
Microscope	FEI TITAN KRIOS	Depositor
Voltage (kV)	300	Depositor
Electron dose ($e^-/\text{\AA}^2$)	50	Depositor
Minimum defocus (nm)	500	Depositor
Maximum defocus (nm)	2200	Depositor
Magnification	165000	Depositor
Image detector	GATAN K2 SUMMIT (4k x 4k)	Depositor
Maximum map value	0.647	Depositor
Minimum map value	-0.205	Depositor
Average map value	0.001	Depositor
Map value standard deviation	0.012	Depositor
Recommended contour level	0.0305	Depositor
Map size (\AA)	344.4, 344.4, 344.4	wwPDB
Map dimensions	420, 420, 420	wwPDB
Map angles ($^\circ$)	90.0, 90.0, 90.0	wwPDB
Pixel spacing (\AA)	0.82, 0.82, 0.82	Depositor

5 Model quality [i](#)

5.1 Standard geometry [i](#)

Bond lengths and bond angles in the following residue types are not validated in this section: UX8

The Z score for a bond length (or angle) is the number of standard deviations the observed value is removed from the expected value. A bond length (or angle) with $|Z| > 5$ is considered an outlier worth inspection. RMSZ is the root-mean-square of all Z scores of the bond lengths (or angles).

Mol	Chain	Bond lengths		Bond angles	
		RMSZ	# Z >5	RMSZ	# Z >5
1	A	0.35	0/6350	0.46	0/8614
2	B	0.32	0/2787	0.47	0/3800
3	C	0.31	0/431	0.46	0/588
4	D	0.34	0/1737	0.41	0/2358
5	E	0.34	0/672	0.47	0/917
6	G	2.49	4/56 (7.1%)	2.30	2/71 (2.8%)
All	All	0.38	4/12033 (0.0%)	0.48	2/16348 (0.0%)

All (4) bond length outliers are listed below:

Mol	Chain	Res	Type	Atoms	Z	Observed(Å)	Ideal(Å)
6	G	1	TRP	CD2-CE2	-7.65	1.32	1.41
6	G	1	TRP	CG-CD2	-6.88	1.31	1.43
6	G	1	TRP	CE2-CZ2	-5.88	1.29	1.39
6	G	1	TRP	C-N	5.06	1.45	1.34

All (2) bond angle outliers are listed below:

Mol	Chain	Res	Type	Atoms	Z	Observed(°)	Ideal(°)
6	G	1	TRP	CA-CB-CG	-8.68	97.20	113.70
6	G	1	TRP	CB-CG-CD2	-7.76	116.51	126.60

There are no chirality outliers.

There are no planarity outliers.

5.2 Too-close contacts [i](#)

In the following table, the Non-H and H(model) columns list the number of non-hydrogen atoms and hydrogen atoms in the chain respectively. The H(added) column lists the number of hydrogen

atoms added and optimized by MolProbity. The Clashes column lists the number of clashes within the asymmetric unit, whereas Symm-Clashes lists symmetry-related clashes.

Mol	Chain	Non-H	H(model)	H(added)	Clashes	Symm-Clashes
1	A	6207	5921	5921	33	0
2	B	2736	2680	2679	33	0
3	C	422	422	422	1	0
4	D	1700	1646	1646	16	0
5	E	657	634	634	6	0
6	G	70	56	50	5	0
All	All	11792	11359	11352	87	0

The all-atom clashscore is defined as the number of clashes found per 1000 atoms (including hydrogen atoms). The all-atom clashscore for this structure is 4.

All (87) close contacts within the same asymmetric unit are listed below, sorted by their clash magnitude.

Atom-1	Atom-2	Interatomic distance (Å)	Clash overlap (Å)
2:B:285:SER:OG	2:B:287:ASN:OD1	1.98	0.81
6:G:1:TRP:CZ2	6:G:3:UX8:N	2.49	0.80
2:B:350:ASN:OD1	2:B:351:VAL:N	2.18	0.77
2:B:281:ARG:NH1	2:B:315:THR:OG1	2.22	0.72
1:A:554:GLU:O	1:A:555:HIS:ND1	2.22	0.72
1:A:350:ARG:NH2	1:A:413:ASP:OD2	2.25	0.69
2:B:261:LEU:HD21	2:B:285:SER:HB3	1.73	0.69
5:E:45:LYS:O	5:E:47:ARG:NH1	2.27	0.68
1:A:462:LYS:HD3	1:A:467:THR:HG22	1.75	0.68
1:A:24:PHE:N	1:A:54:VAL:O	2.29	0.66
4:D:162:ASP:OD1	4:D:166:ARG:NE	2.31	0.63
4:D:147:PHE:HB2	4:D:167:LEU:HD21	1.80	0.62
2:B:290:ILE:HD11	2:B:337:LEU:HD21	1.81	0.62
1:A:783:LEU:HD23	1:A:785:PHE:HE1	1.66	0.61
1:A:722:THR:HG21	1:A:725:ILE:HD12	1.84	0.60
6:G:3:UX8:CE3	6:G:3:UX8:C	2.80	0.59
1:A:146:LYS:NZ	1:A:174:SER:OG	2.36	0.59
4:D:92:ILE:HG23	4:D:108:VAL:CG1	2.34	0.58
4:D:92:ILE:HG23	4:D:108:VAL:HG12	1.84	0.57
1:A:237:ARG:NH1	1:A:330:ASP:OD1	2.37	0.57
1:A:358:ASP:O	4:D:132:ARG:NH2	2.37	0.57
4:D:106:ASP:OD1	4:D:107:TYR:N	2.38	0.56
1:A:247:LEU:CD1	2:B:192:LEU:HD11	2.36	0.56
2:B:337:LEU:HB2	2:B:349:ILE:HG23	1.87	0.56
4:D:160:THR:O	4:D:163:ALA:HB3	2.06	0.56

Continued on next page...

Continued from previous page...

Atom-1	Atom-2	Interatomic distance (Å)	Clash overlap (Å)
6:G:1:TRP:CH2	6:G:3:UX8:N	2.74	0.56
1:A:672:ALA:O	1:A:702:SER:OG	2.24	0.56
2:B:174:LEU:CD2	2:B:181:VAL:HG22	2.36	0.55
2:B:341:ASP:OD1	2:B:345:TYR:N	2.41	0.54
2:B:353:ASP:OD1	2:B:354:GLY:N	2.41	0.54
2:B:363:ASP:OD1	2:B:364:SER:N	2.41	0.54
2:B:209:VAL:HG22	2:B:210:GLY:N	2.24	0.53
2:B:127:GLU:OE1	2:B:195:ARG:NH2	2.42	0.53
3:C:69:VAL:O	3:C:69:VAL:HG13	2.08	0.53
4:D:194:VAL:O	4:D:198:VAL:HG23	2.09	0.52
2:B:138:ASP:OD1	2:B:138:ASP:N	2.43	0.51
4:D:230:GLN:O	4:D:234:VAL:HG23	2.11	0.51
4:D:160:THR:HG23	4:D:161:THR:N	2.26	0.50
1:A:266:TYR:OH	1:A:330:ASP:OD1	2.25	0.50
5:E:110:LEU:HD23	5:E:110:LEU:H	1.76	0.50
1:A:172:GLY:CA	2:B:29:VAL:HG23	2.42	0.49
1:A:247:LEU:HD13	2:B:192:LEU:HD11	1.95	0.48
1:A:297:ASN:OD1	1:A:298:GLY:N	2.47	0.48
2:B:291:VAL:HG22	2:B:296:ILE:HG12	1.95	0.48
1:A:677:HIS:O	1:A:677:HIS:ND1	2.47	0.48
2:B:134:LEU:CD2	2:B:141:VAL:HG22	2.44	0.48
2:B:252:VAL:HG22	2:B:253:VAL:N	2.29	0.48
1:A:170:GLN:HB3	2:B:29:VAL:HG22	1.96	0.48
2:B:45:THR:OG1	2:B:391:THR:OG1	2.30	0.47
1:A:284:ILE:O	1:A:287:LEU:N	2.42	0.47
1:A:767:ARG:NE	1:A:797:ASP:OD2	2.44	0.47
2:B:72:VAL:HG21	2:B:379:LEU:HD21	1.97	0.47
2:B:174:LEU:HD23	2:B:181:VAL:HG22	1.95	0.47
4:D:93:ASP:OD1	4:D:112:ARG:NH2	2.48	0.46
2:B:252:VAL:HG22	2:B:253:VAL:H	1.80	0.46
2:B:350:ASN:OD1	2:B:352:GLU:N	2.42	0.46
5:E:28:TYR:N	5:E:28:TYR:CD1	2.83	0.46
1:A:77:VAL:HG13	1:A:84:LEU:HD21	1.97	0.46
1:A:582:ASP:OD2	1:A:583:ARG:N	2.49	0.46
1:A:148:SER:O	2:B:29:VAL:HG21	2.16	0.45
2:B:52:VAL:HG12	2:B:53:GLY:N	2.31	0.45
2:B:50:THR:HG22	2:B:51:SER:N	2.32	0.45
5:E:39:THR:O	5:E:40:ALA:HB3	2.17	0.45
5:E:71:ASN:ND2	5:E:96:ASN:O	2.43	0.45
1:A:266:TYR:HB3	1:A:335:VAL:HG23	1.98	0.45
1:A:26:VAL:O	1:A:51:GLY:N	2.49	0.45

Continued on next page...

Continued from previous page...

Atom-1	Atom-2	Interatomic distance (Å)	Clash overlap (Å)
1:A:500:ASP:OD1	1:A:664:GLN:NE2	2.49	0.45
4:D:88:ALA:O	4:D:92:ILE:HD12	2.17	0.45
1:A:784:VAL:HG13	1:A:784:VAL:O	2.16	0.45
2:B:38:VAL:HG21	2:B:356:PHE:HB2	2.00	0.45
1:A:106:LYS:HB3	1:A:108:ASP:OD1	2.17	0.44
2:B:317:TRP:NE1	2:B:351:VAL:O	2.44	0.44
2:B:246:ASP:N	2:B:246:ASP:OD1	2.51	0.44
4:D:114:LEU:HD21	4:D:166:ARG:CZ	2.48	0.43
1:A:501:LEU:HD21	1:A:666:ASN:HB3	2.01	0.43
4:D:26:GLU:OE1	4:D:26:GLU:HA	2.19	0.43
4:D:196:ASN:ND2	5:E:63:LEU:O	2.45	0.42
1:A:657:SER:HA	1:A:661:ARG:HG2	2.02	0.42
2:B:209:VAL:HG22	2:B:210:GLY:H	1.83	0.42
6:G:3:UX8:CZ3	6:G:5:LYS:N	2.83	0.42
2:B:353:ASP:OD1	2:B:355:ARG:N	2.51	0.42
1:A:583:ARG:NH2	1:A:586:PHE:O	2.53	0.41
4:D:58:LEU:HD12	4:D:58:LEU:O	2.20	0.41
1:A:410:ASP:OD1	1:A:410:ASP:N	2.53	0.41
1:A:192:GLU:OE1	1:A:229:TYR:OH	2.28	0.41
1:A:628:VAL:HG12	1:A:629:VAL:N	2.36	0.41
6:G:3:UX8:CZ2	6:G:4:SER:O	2.68	0.41

There are no symmetry-related clashes.

5.3 Torsion angles [i](#)

5.3.1 Protein backbone [i](#)

In the following table, the Percentiles column shows the percent Ramachandran outliers of the chain as a percentile score with respect to all PDB entries followed by that with respect to all EM entries.

The Analysed column shows the number of residues for which the backbone conformation was analysed, and the total number of residues.

Mol	Chain	Analysed	Favoured	Allowed	Outliers	Percentiles	
1	A	783/788 (99%)	748 (96%)	35 (4%)	0	100	100
2	B	358/381 (94%)	327 (91%)	31 (9%)	0	100	100
3	C	56/320 (18%)	46 (82%)	10 (18%)	0	100	100
4	D	205/226 (91%)	198 (97%)	7 (3%)	0	100	100

Continued on next page...

Continued from previous page...

Mol	Chain	Analysed	Favoured	Allowed	Outliers	Percentiles	
5	E	82/102 (80%)	74 (90%)	8 (10%)	0	100	100
6	G	4/7 (57%)	2 (50%)	1 (25%)	1 (25%)	0	0
All	All	1488/1824 (82%)	1395 (94%)	92 (6%)	1 (0%)	54	84

All (1) Ramachandran outliers are listed below:

Mol	Chain	Res	Type
6	G	6	SER

5.3.2 Protein sidechains [i](#)

In the following table, the Percentiles column shows the percent sidechain outliers of the chain as a percentile score with respect to all PDB entries followed by that with respect to all EM entries.

The Analysed column shows the number of residues for which the sidechain conformation was analysed, and the total number of residues.

Mol	Chain	Analysed	Rotameric	Outliers	Percentiles	
1	A	669/670 (100%)	667 (100%)	2 (0%)	92	97
2	B	295/312 (95%)	295 (100%)	0	100	100
3	C	42/258 (16%)	42 (100%)	0	100	100
4	D	177/190 (93%)	177 (100%)	0	100	100
5	E	73/90 (81%)	73 (100%)	0	100	100
6	G	6/6 (100%)	6 (100%)	0	100	100
All	All	1262/1526 (83%)	1260 (100%)	2 (0%)	93	98

All (2) residues with a non-rotameric sidechain are listed below:

Mol	Chain	Res	Type
1	A	546	TRP
1	A	657	SER

Sometimes sidechains can be flipped to improve hydrogen bonding and reduce clashes. All (2) such sidechains are listed below:

Mol	Chain	Res	Type
1	A	112	GLN
2	B	255	ASN

5.3.3 RNA [i](#)

There are no RNA molecules in this entry.

5.4 Non-standard residues in protein, DNA, RNA chains [i](#)

1 non-standard protein/DNA/RNA residue is modelled in this entry.

In the following table, the Counts columns list the number of bonds (or angles) for which Mogul statistics could be retrieved, the number of bonds (or angles) that are observed in the model and the number of bonds (or angles) that are defined in the Chemical Component Dictionary. The Link column lists molecule types, if any, to which the group is linked. The Z score for a bond length (or angle) is the number of standard deviations the observed value is removed from the expected value. A bond length (or angle) with $|Z| > 2$ is considered an outlier worth inspection. RMSZ is the root-mean-square of all Z scores of the bond lengths (or angles).

Mol	Type	Chain	Res	Link	Bond lengths			Bond angles		
					Counts	RMSZ	# Z > 2	Counts	RMSZ	# Z > 2
6	UX8	G	3	6	14,16,17	2.97	4 (28%)	16,22,24	2.56	5 (31%)

In the following table, the Chirals column lists the number of chiral outliers, the number of chiral centers analysed, the number of these observed in the model and the number defined in the Chemical Component Dictionary. Similar counts are reported in the Torsion and Rings columns. '-' means no outliers of that kind were identified.

Mol	Type	Chain	Res	Link	Chirals	Torsions	Rings
6	UX8	G	3	6	-	1/5/10/12	0/2/2/2

All (4) bond length outliers are listed below:

Mol	Chain	Res	Type	Atoms	Z	Observed(Å)	Ideal(Å)
6	G	3	UX8	CG-CD2	-7.26	1.32	1.40
6	G	3	UX8	CZ2-CE2	-4.85	1.33	1.41
6	G	3	UX8	CE3-CD2	-4.50	1.33	1.42
6	G	3	UX8	CD2-CE2	-3.50	1.33	1.42

All (5) bond angle outliers are listed below:

Mol	Chain	Res	Type	Atoms	Z	Observed(°)	Ideal(°)
6	G	3	UX8	O9-CB-CA	-6.82	92.90	107.28
6	G	3	UX8	CG-CB-CA	-5.62	103.97	111.49
6	G	3	UX8	CE3-CD2-CE2	2.86	121.96	118.17
6	G	3	UX8	CE3-CD2-CG	-2.63	129.44	134.68
6	G	3	UX8	CH2-CZ3-CE3	-2.06	117.55	120.44

There are no chirality outliers.

All (1) torsion outliers are listed below:

Mol	Chain	Res	Type	Atoms
6	G	3	UX8	O-C-CA-CB

There are no ring outliers.

1 monomer is involved in 5 short contacts:

Mol	Chain	Res	Type	Clashes	Symm-Clashes
6	G	3	UX8	5	0

5.5 Carbohydrates [i](#)

There are no monosaccharides in this entry.

5.6 Ligand geometry [i](#)

There are no ligands in this entry.

5.7 Other polymers [i](#)

There are no such residues in this entry.

5.8 Polymer linkage issues [i](#)

There are no chain breaks in this entry.

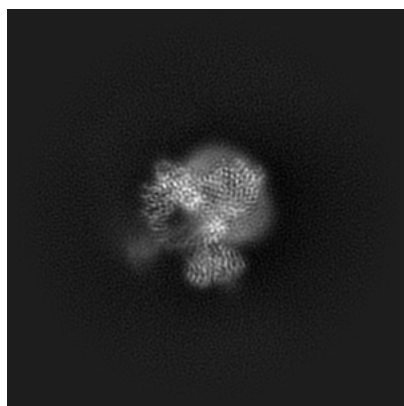
6 Map visualisation [i](#)

This section contains visualisations of the EMDB entry EMD-12546. These allow visual inspection of the internal detail of the map and identification of artifacts.

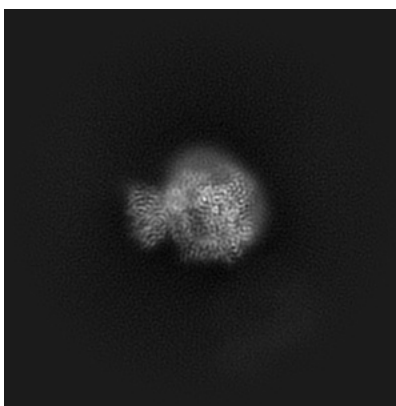
Images derived from a raw map, generated by summing the deposited half-maps, are presented below the corresponding image components of the primary map to allow further visual inspection and comparison with those of the primary map.

6.1 Orthogonal projections [i](#)

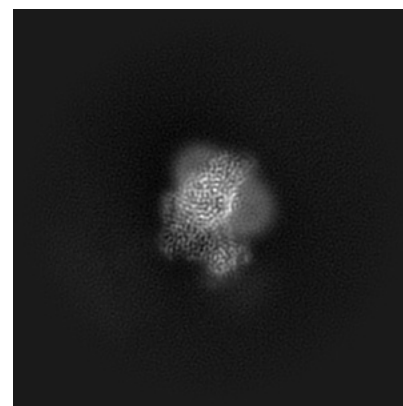
6.1.1 Primary map



X

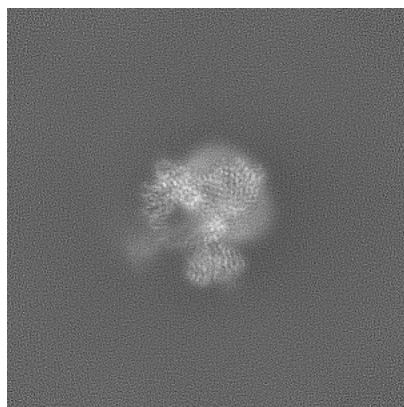


Y

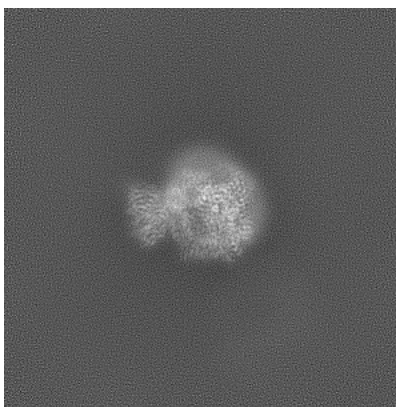


Z

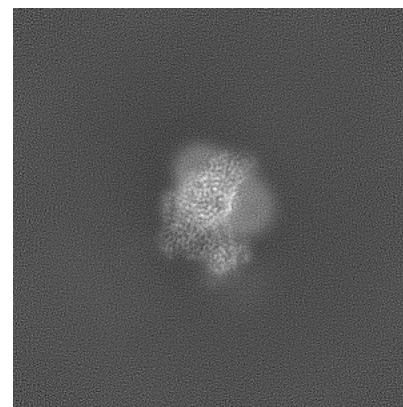
6.1.2 Raw map



X



Y

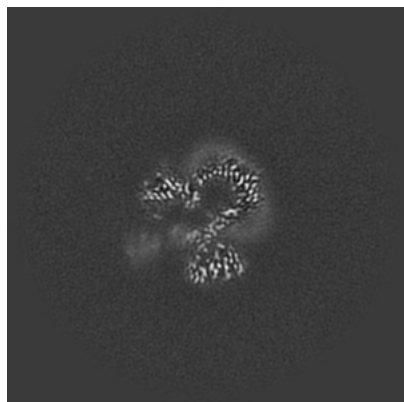


Z

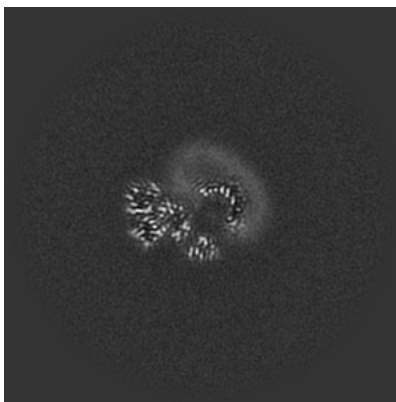
The images above show the map projected in three orthogonal directions.

6.2 Central slices [i](#)

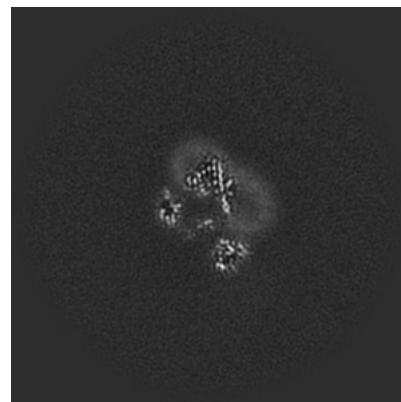
6.2.1 Primary map



X Index: 210

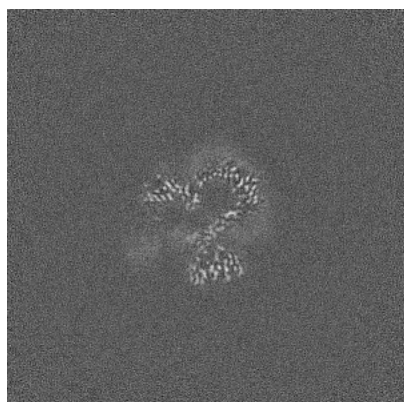


Y Index: 210

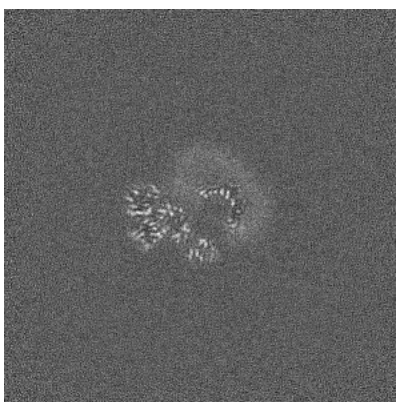


Z Index: 210

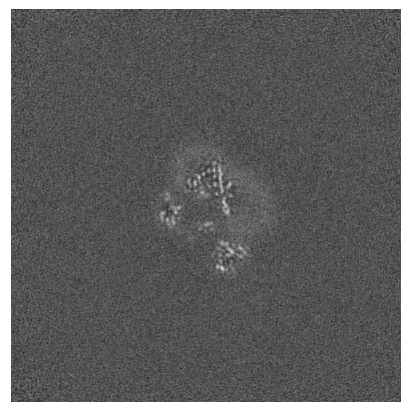
6.2.2 Raw map



X Index: 210



Y Index: 210

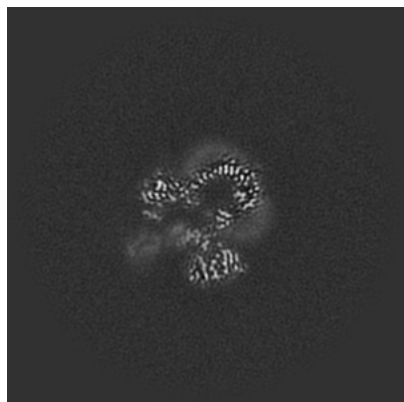


Z Index: 210

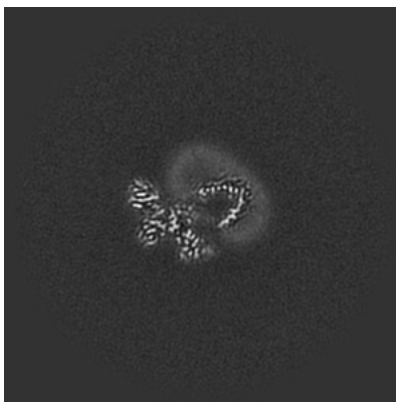
The images above show central slices of the map in three orthogonal directions.

6.3 Largest variance slices [i](#)

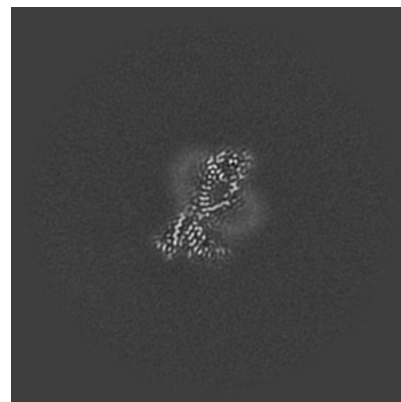
6.3.1 Primary map



X Index: 212

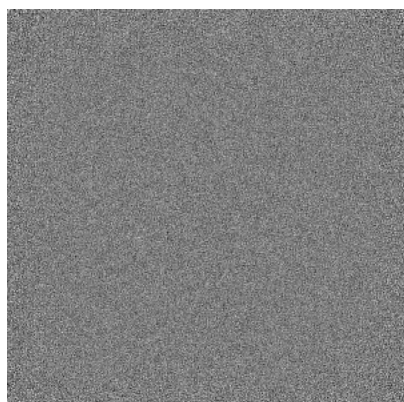


Y Index: 219

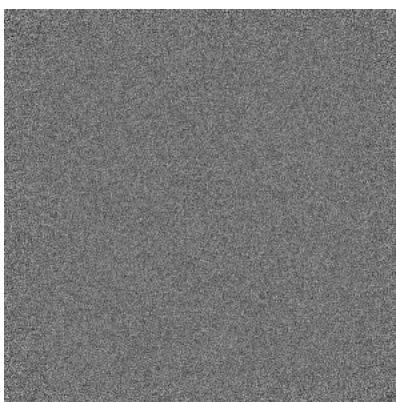


Z Index: 240

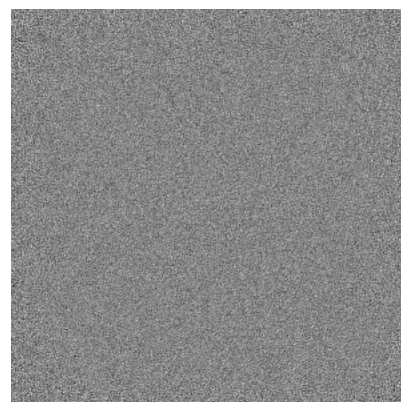
6.3.2 Raw map



X Index: 0



Y Index: 0

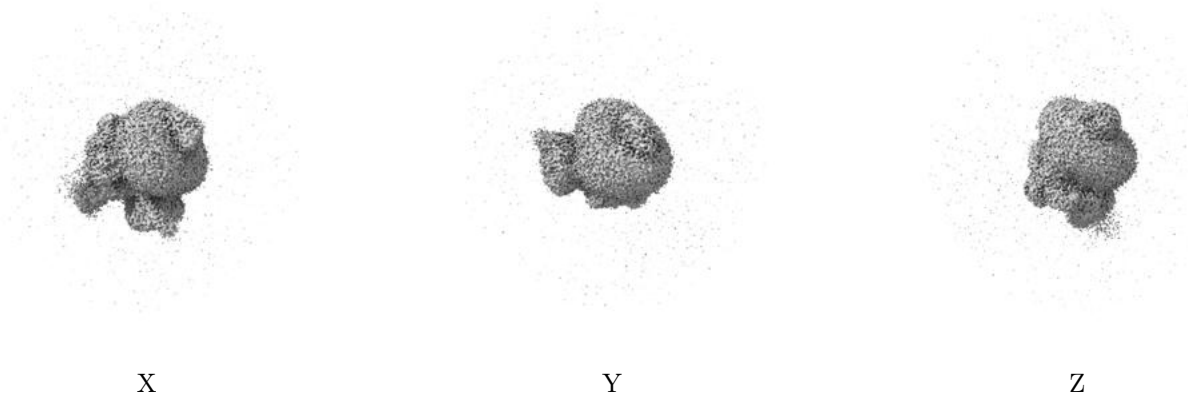


Z Index: 0

The images above show the largest variance slices of the map in three orthogonal directions.

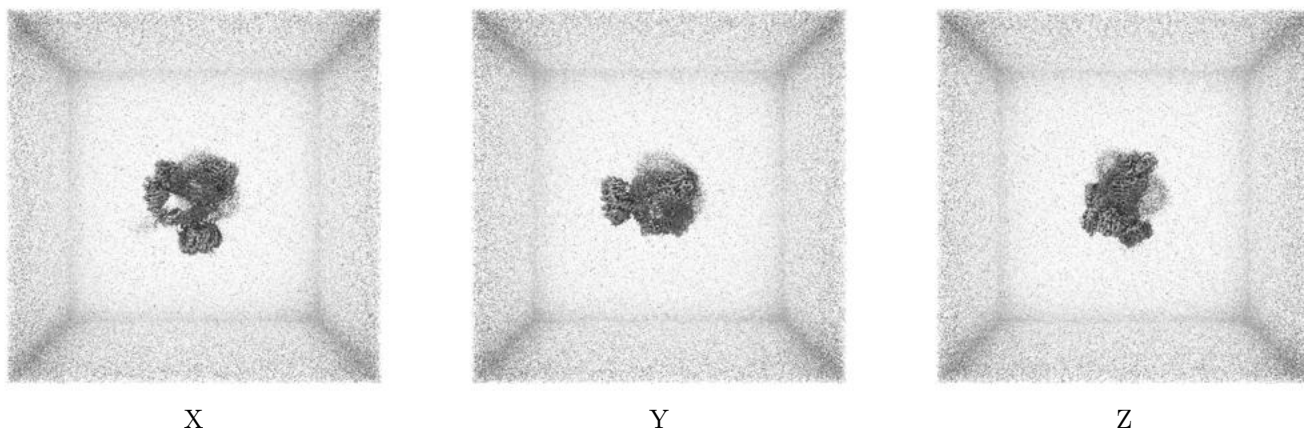
6.4 Orthogonal surface views [i](#)

6.4.1 Primary map



The images above show the 3D surface view of the map at the recommended contour level 0.0305. These images, in conjunction with the slice images, may facilitate assessment of whether an appropriate contour level has been provided.

6.4.2 Raw map



These images show the 3D surface of the raw map. The raw map's contour level was selected so that its surface encloses the same volume as the primary map does at its recommended contour level.

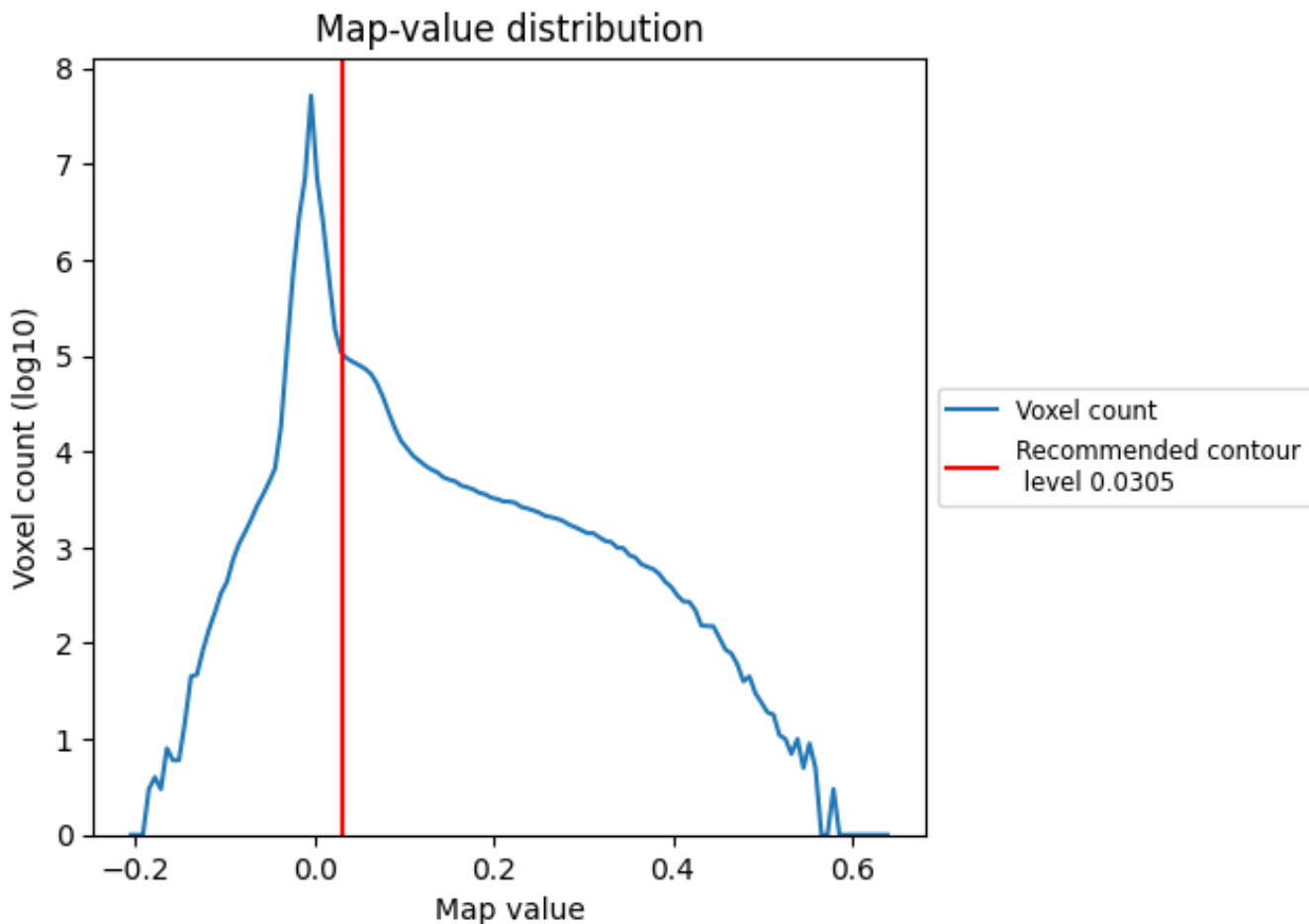
6.5 Mask visualisation [i](#)

This section was not generated. No masks/segmentation were deposited.

7 Map analysis [i](#)

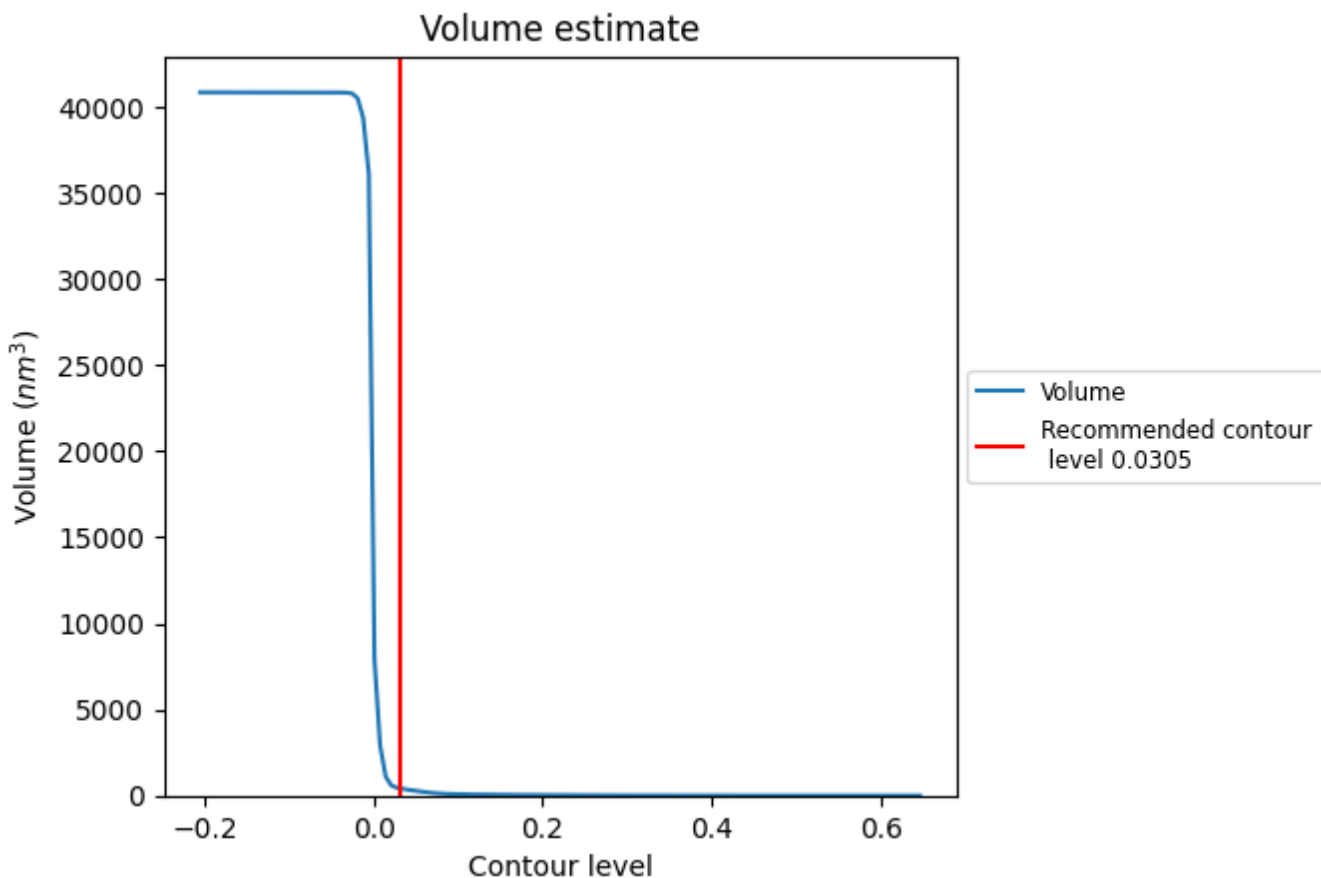
This section contains the results of statistical analysis of the map.

7.1 Map-value distribution [i](#)



The map-value distribution is plotted in 128 intervals along the x-axis. The y-axis is logarithmic. A spike in this graph at zero usually indicates that the volume has been masked.

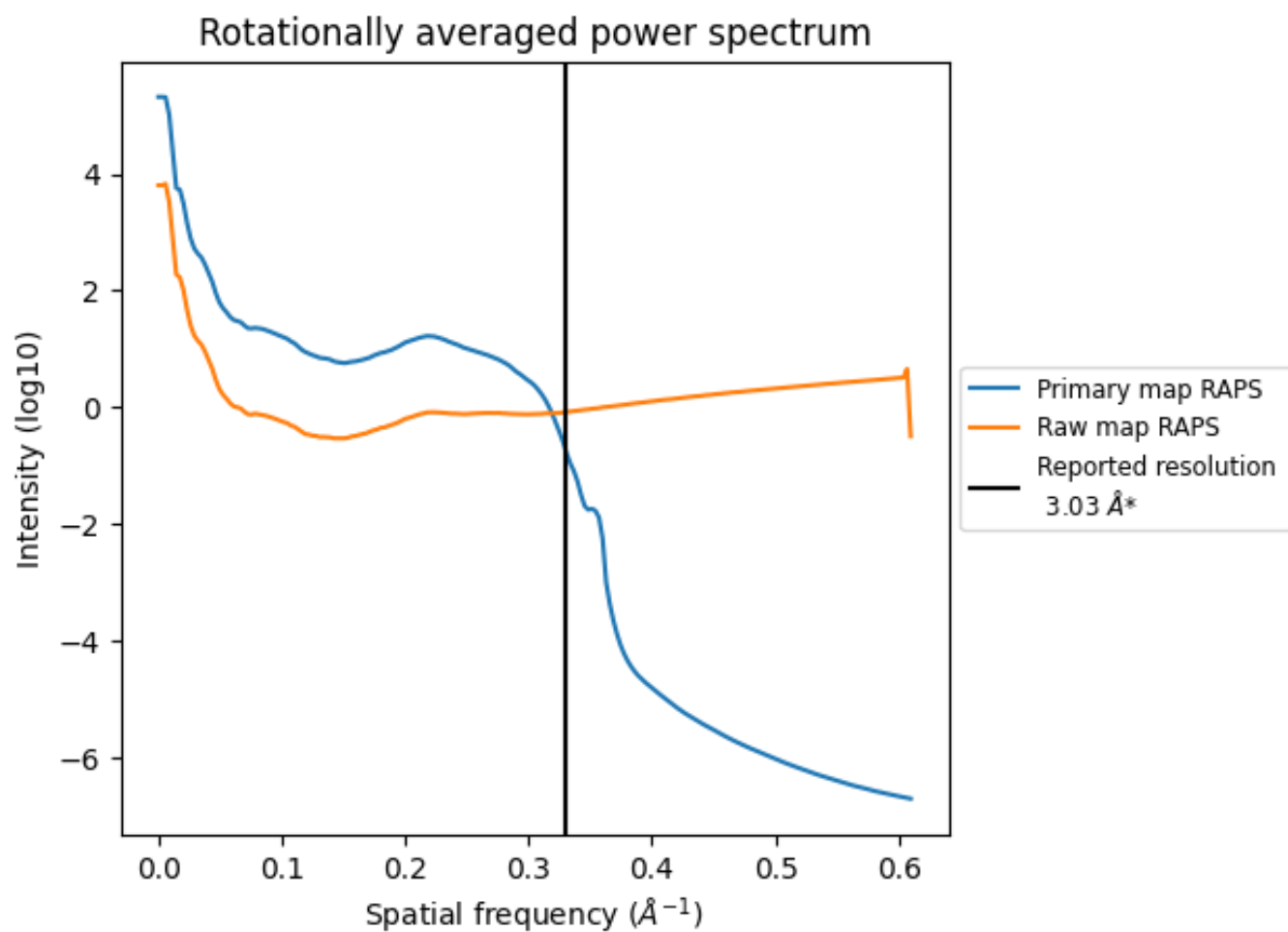
7.2 Volume estimate [i](#)



The volume at the recommended contour level is 428 nm³; this corresponds to an approximate mass of 386 kDa.

The volume estimate graph shows how the enclosed volume varies with the contour level. The recommended contour level is shown as a vertical line and the intersection between the line and the curve gives the volume of the enclosed surface at the given level.

7.3 Rotationally averaged power spectrum i

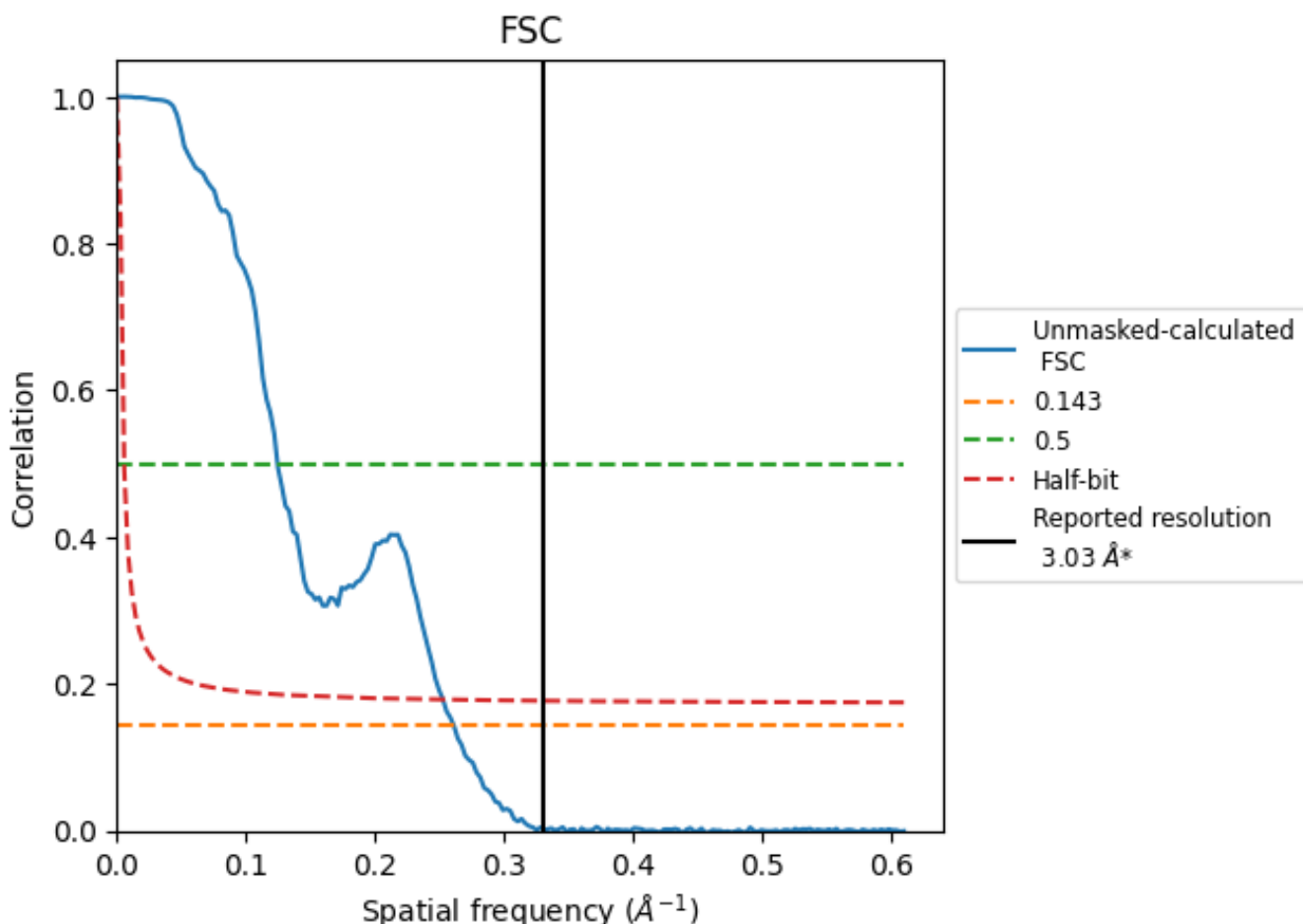


*Reported resolution corresponds to spatial frequency of 0.330 Å⁻¹

8 Fourier-Shell correlation [i](#)

Fourier-Shell Correlation (FSC) is the most commonly used method to estimate the resolution of single-particle and subtomogram-averaged maps. The shape of the curve depends on the imposed symmetry, mask and whether or not the two 3D reconstructions used were processed from a common reference. The reported resolution is shown as a black line. A curve is displayed for the half-bit criterion in addition to lines showing the 0.143 gold standard cut-off and 0.5 cut-off.

8.1 FSC [i](#)



*Reported resolution corresponds to spatial frequency of 0.330 Å⁻¹

8.2 Resolution estimates [i](#)

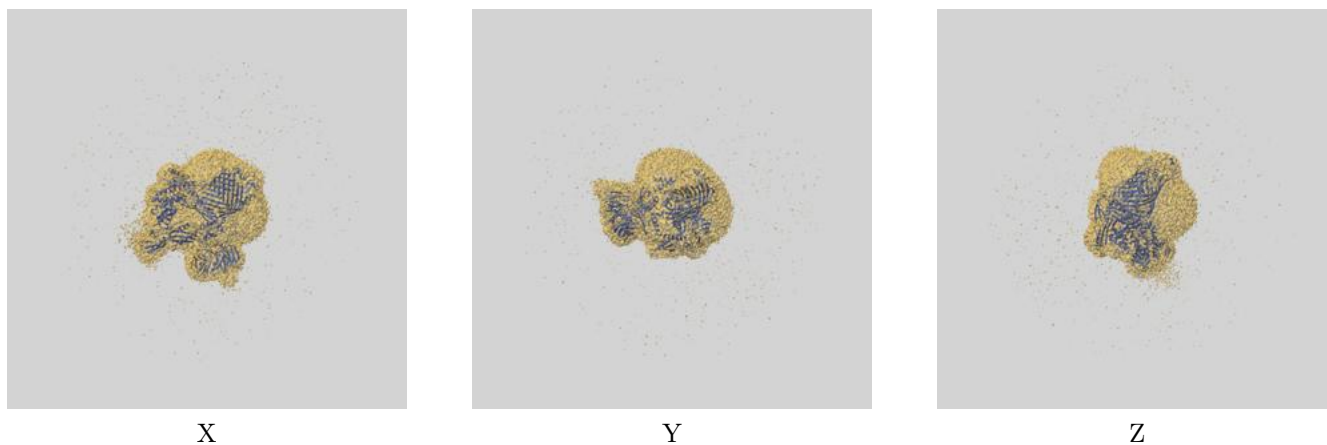
Resolution estimate (Å)	Estimation criterion (FSC cut-off)		
	0.143	0.5	Half-bit
Reported by author	3.03	-	-
Author-provided FSC curve	-	-	-
Unmasked-calculated*	3.83	8.03	3.96

*Resolution estimate based on FSC curve calculated by comparison of deposited half-maps. The value from deposited half-maps intersecting FSC 0.143 CUT-OFF 3.83 differs from the reported value 3.03 by more than 10 %

9 Map-model fit [i](#)

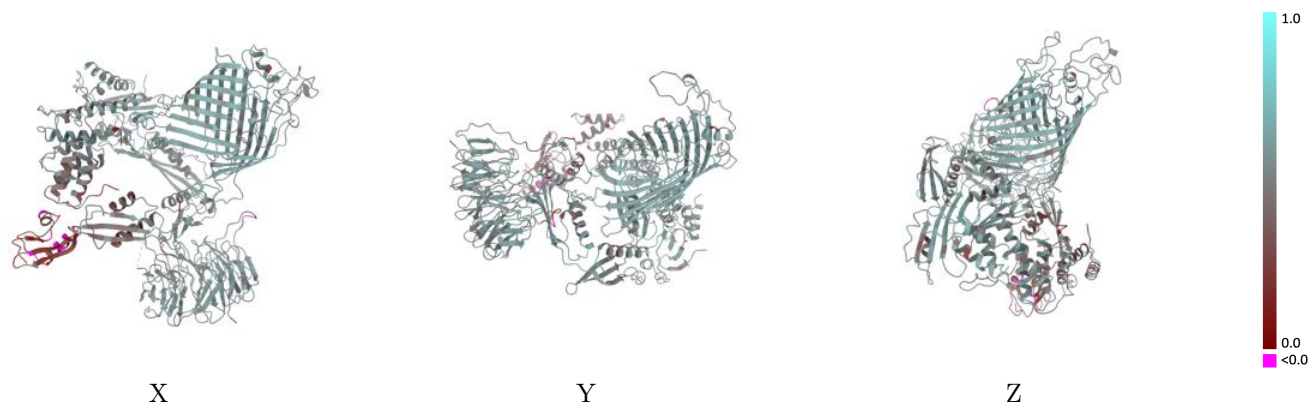
This section contains information regarding the fit between EMDB map EMD-12546 and PDB model 7NRI. Per-residue inclusion information can be found in section 3 on page 5.

9.1 Map-model overlay [i](#)



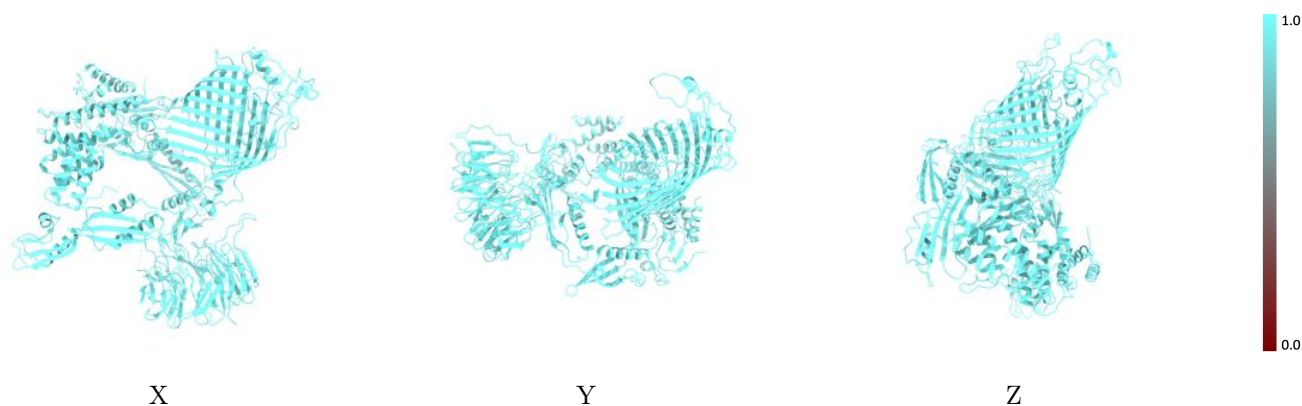
The images above show the 3D surface view of the map at the recommended contour level 0.0305 at 50% transparency in yellow overlaid with a ribbon representation of the model coloured in blue. These images allow for the visual assessment of the quality of fit between the atomic model and the map.

9.2 Q-score mapped to coordinate model [\(i\)](#)



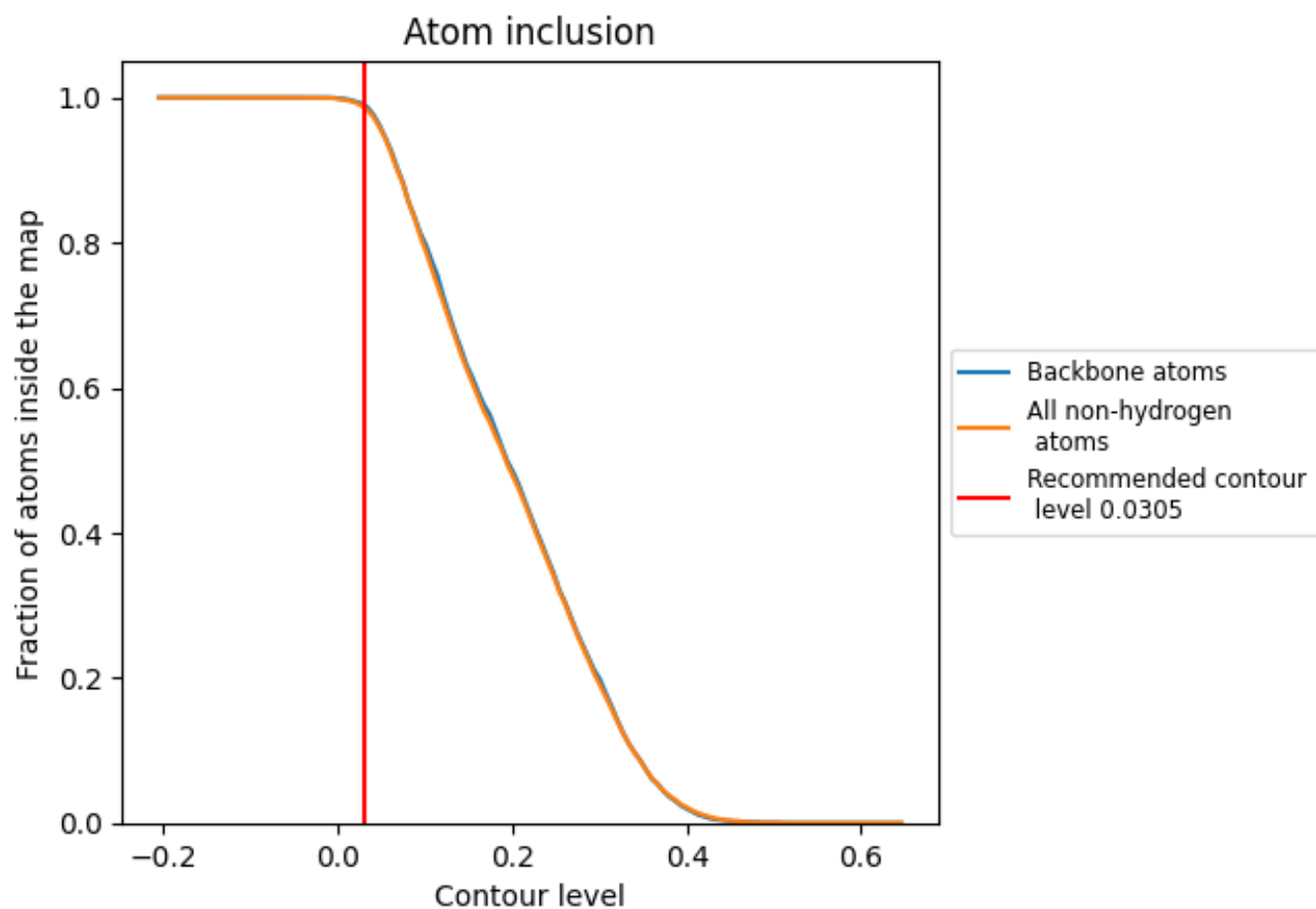
The images above show the model with each residue coloured according to its Q-score. This shows their resolvability in the map with higher Q-score values reflecting better resolvability. Please note: Q-score is calculating the resolvability of atoms, and thus high values are only expected at resolutions at which atoms can be resolved. Low Q-score values may therefore be expected for many entries.

9.3 Atom inclusion mapped to coordinate model [\(i\)](#)



The images above show the model with each residue coloured according to its atom inclusion. This shows to what extent they are inside the map at the recommended contour level (0.0305).















9.4 Atom inclusion [i](#)



At the recommended contour level, 99% of all backbone atoms, 99% of all non-hydrogen atoms, are inside the map.

9.5 Map-model fit summary

The table lists the average atom inclusion at the recommended contour level (0.0305) and Q-score for the entire model and for each chain.

Chain	Atom inclusion	Q-score
All	 0.9865	 0.5080
A	 0.9895	 0.5080
B	 0.9889	 0.5160
C	 0.9806	 0.4550
D	 0.9770	 0.4960
E	 0.9876	 0.5300
G	 1.0000	 0.5410

