



wwPDB X-ray Structure Validation Summary Report ⓘ

May 21, 2020 – 11:39 pm BST

PDB ID : 1O61
Title : Crystal structure of a PLP-dependent enzyme with PLP
Authors : Structural GenomiX
Deposited on : 2003-10-23
Resolution : 1.90 Å(reported)

This is a wwPDB X-ray Structure Validation Summary Report for a publicly released PDB entry.

We welcome your comments at validation@mail.wwpdb.org

A user guide is available at

<https://www.wwpdb.org/validation/2017/XrayValidationReportHelp>

with specific help available everywhere you see the ⓘ symbol.

The following versions of software and data (see [references ⓘ](#)) were used in the production of this report:

MolProbity : 4.02b-467
Mogul : 1.8.5 (274361), CSD as541be (2020)
Xtriage (Phenix) : 1.13
EDS : 2.11
Percentile statistics : 20191225.v01 (using entries in the PDB archive December 25th 2019)
Refmac : 5.8.0158
CCP4 : 7.0.044 (Gargrove)
Ideal geometry (proteins) : Engh & Huber (2001)
Ideal geometry (DNA, RNA) : Parkinson et al. (1996)
Validation Pipeline (wwPDB-VP) : 2.11

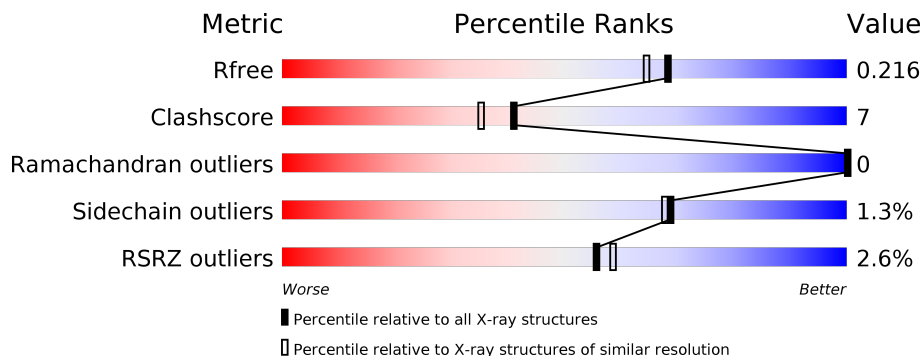
1 Overall quality at a glance

The following experimental techniques were used to determine the structure:

X-RAY DIFFRACTION

The reported resolution of this entry is 1.90 Å.

Percentile scores (ranging between 0-100) for global validation metrics of the entry are shown in the following graphic. The table shows the number of entries on which the scores are based.



Metric	Whole archive (#Entries)	Similar resolution (#Entries, resolution range(Å))
R_{free}	130704	6207 (1.90-1.90)
Clashscore	141614	6847 (1.90-1.90)
Ramachandran outliers	138981	6760 (1.90-1.90)
Sidechain outliers	138945	6760 (1.90-1.90)
RSRZ outliers	127900	6082 (1.90-1.90)

The table below summarises the geometric issues observed across the polymeric chains and their fit to the electron density. The red, orange, yellow and green segments on the lower bar indicate the fraction of residues that contain outliers for ≥ 3 , 2, 1 and 0 types of geometric quality criteria respectively. A grey segment represents the fraction of residues that are not modelled. The numeric value for each fraction is indicated below the corresponding segment, with a dot representing fractions $\leq 5\%$. The upper red bar (where present) indicates the fraction of residues that have poor fit to the electron density. The numeric value is given above the bar.

Mol	Chain	Length	Quality of chain
1	A	394	 3% 78% 16% • 5%
1	B	394	 2% 81% 12% 7%

The following table lists non-polymeric compounds, carbohydrate monomers and non-standard residues in protein, DNA, RNA chains that are outliers for geometric or electron-density-fit criteria:

Mol	Type	Chain	Res	Chirality	Geometry	Clashes	Electron density
3	PLP	B	399	-	-	-	X

2 Entry composition [i](#)

There are 4 unique types of molecules in this entry. The entry contains 6323 atoms, of which 0 are hydrogens and 0 are deuteriums.

In the tables below, the ZeroOcc column contains the number of atoms modelled with zero occupancy, the AltConf column contains the number of residues with at least one atom in alternate conformation and the Trace column contains the number of residues modelled with at most 2 atoms.

- Molecule 1 is a protein called aminotransferase.

Mol	Chain	Residues	Atoms					ZeroOcc	AltConf	Trace
			Total	C	N	O	S			
1	A	374	2932	1886	486	548	12	0	0	0
1	B	368	2895	1860	481	542	12	0	0	0

There are 16 discrepancies between the modelled and reference sequences:

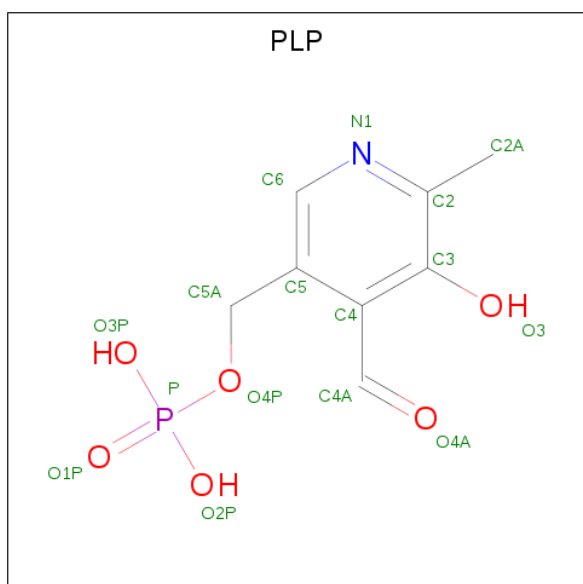
Chain	Residue	Modelled	Actual	Comment	Reference
A	387	GLY	-	cloning artifact	UNP Q9S5Y7
A	388	SER	-	cloning artifact	UNP Q9S5Y7
A	389	HIS	-	cloning artifact	UNP Q9S5Y7
A	390	HIS	-	cloning artifact	UNP Q9S5Y7
A	391	HIS	-	cloning artifact	UNP Q9S5Y7
A	392	HIS	-	cloning artifact	UNP Q9S5Y7
A	393	HIS	-	cloning artifact	UNP Q9S5Y7
A	394	HIS	-	cloning artifact	UNP Q9S5Y7
B	387	GLY	-	cloning artifact	UNP Q9S5Y7
B	388	SER	-	cloning artifact	UNP Q9S5Y7
B	389	HIS	-	cloning artifact	UNP Q9S5Y7
B	390	HIS	-	cloning artifact	UNP Q9S5Y7
B	391	HIS	-	cloning artifact	UNP Q9S5Y7
B	392	HIS	-	cloning artifact	UNP Q9S5Y7
B	393	HIS	-	cloning artifact	UNP Q9S5Y7
B	394	HIS	-	cloning artifact	UNP Q9S5Y7

- Molecule 2 is ACETATE ION (three-letter code: ACT) (formula: C₂H₃O₂).



Mol	Chain	Residues	Atoms	ZeroOcc	AltConf
2	A	1	Total C O 4 2 2	0	0
2	B	1	Total C O 4 2 2	0	0
2	B	1	Total C O 4 2 2	0	0
2	B	1	Total C O 4 2 2	0	0
2	B	1	Total C O 4 2 2	0	0

- Molecule 3 is PYRIDOXAL-5'-PHOSPHATE (three-letter code: PLP) (formula: C₈H₁₀NO₆P).



Mol	Chain	Residues	Atoms					ZeroOcc	AltConf
3	A	1	Total	C	N	O	P	0	0
			16	8	1	6	1		
3	B	1	Total	C	N	O	P	0	0
			16	8	1	6	1		

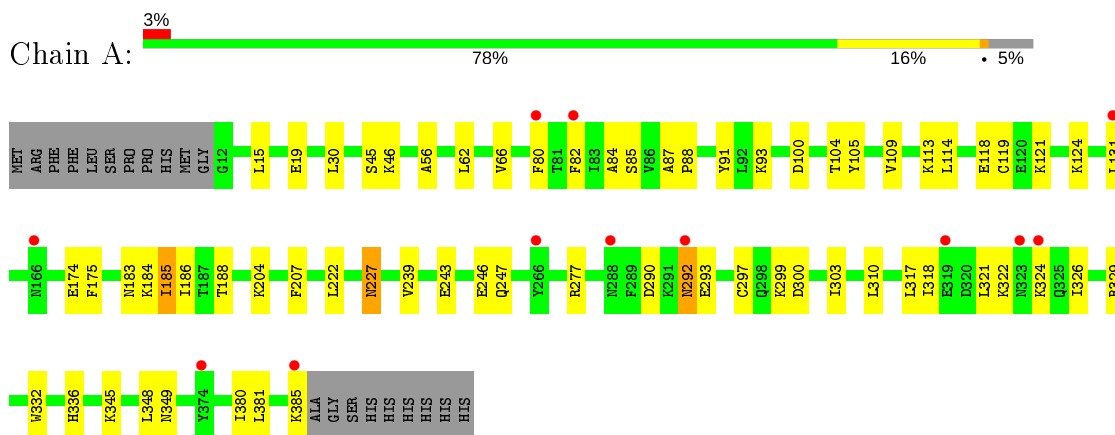
- Molecule 4 is water.

Mol	Chain	Residues	Atoms		ZeroOcc	AltConf
4	A	238	Total	O	0	0
			238	238		
4	B	206	Total	O	0	0
			206	206		

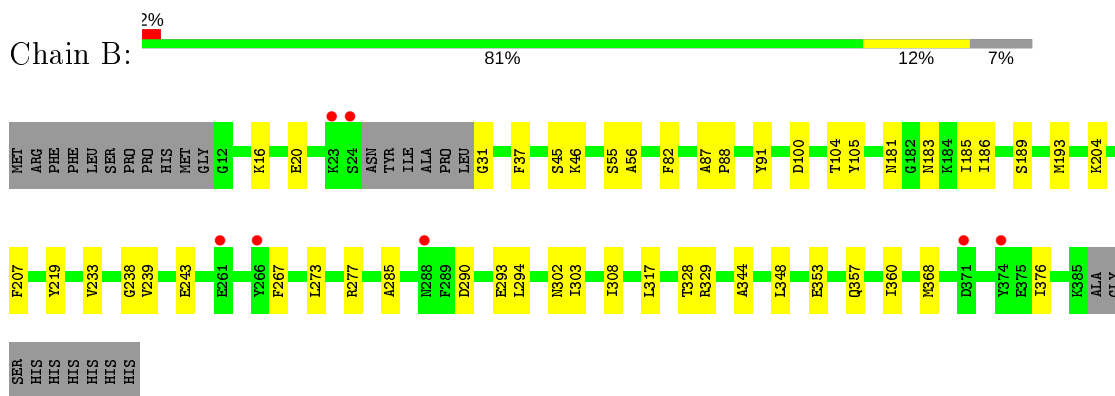
3 Residue-property plots [i](#)

These plots are drawn for all protein, RNA and DNA chains in the entry. The first graphic for a chain summarises the proportions of the various outlier classes displayed in the second graphic. The second graphic shows the sequence view annotated by issues in geometry and electron density. Residues are color-coded according to the number of geometric quality criteria for which they contain at least one outlier: green = 0, yellow = 1, orange = 2 and red = 3 or more. A red dot above a residue indicates a poor fit to the electron density ($RSRZ > 2$). Stretches of 2 or more consecutive residues without any outlier are shown as a green connector. Residues present in the sample, but not in the model, are shown in grey.

- Molecule 1: aminotransferase



- Molecule 1: aminotransferase



4 Data and refinement statistics

Property	Value	Source
Space group	P 65	Depositor
Cell constants a, b, c, α , β , γ	152.30 Å 152.30 Å 77.33 Å 90.00° 90.00° 120.00°	Depositor
Resolution (Å)	34.47 – 1.90 34.47 – 1.90	Depositor EDS
% Data completeness (in resolution range)	(Not available) (34.47-1.90) 99.4 (34.47-1.90)	Depositor EDS
R_{merge}	0.07	Depositor
R_{sym}	(Not available)	Depositor
$\langle I/\sigma(I) \rangle$ ¹	6.02 (at 1.91 Å)	Xtrriage
Refinement program	REFMAC 4.0	Depositor
R, R_{free}	0.208 , 0.230 0.195 , 0.216	Depositor DCC
R_{free} test set	8058 reflections (10.12%)	wwPDB-VP
Wilson B-factor (Å ²)	21.7	Xtrriage
Anisotropy	0.147	Xtrriage
Bulk solvent k_{sol} (e/Å ³), B_{sol} (Å ²)	0.37 , 53.9	EDS
L-test for twinning ²	$\langle L \rangle = 0.49$, $\langle L^2 \rangle = 0.33$	Xtrriage
Estimated twinning fraction	0.023 for h,-h-k,-l	Xtrriage
F_o, F_c correlation	0.95	EDS
Total number of atoms	6323	wwPDB-VP
Average B, all atoms (Å ²)	23.0	wwPDB-VP

Xtrriage's analysis on translational NCS is as follows: *The largest off-origin peak in the Patterson function is 2.46% of the height of the origin peak. No significant pseudotranslation is detected.*

¹ Intensities estimated from amplitudes.

² Theoretical values of $\langle |L| \rangle$, $\langle L^2 \rangle$ for acentric reflections are 0.5, 0.333 respectively for untwinned datasets, and 0.375, 0.2 for perfectly twinned datasets.

5 Model quality [i](#)

5.1 Standard geometry [i](#)

Bond lengths and bond angles in the following residue types are not validated in this section: ACT, PLP

The Z score for a bond length (or angle) is the number of standard deviations the observed value is removed from the expected value. A bond length (or angle) with $|Z| > 5$ is considered an outlier worth inspection. RMSZ is the root-mean-square of all Z scores of the bond lengths (or angles).

Mol	Chain	Bond lengths		Bond angles	
		RMSZ	# Z >5	RMSZ	# Z >5
1	A	0.31	0/2986	0.59	0/4030
1	B	0.32	0/2946	0.59	1/3970 (0.0%)
All	All	0.31	0/5932	0.59	1/8000 (0.0%)

Chiral center outliers are detected by calculating the chiral volume of a chiral center and verifying if the center is modelled as a planar moiety or with the opposite hand. A planarity outlier is detected by checking planarity of atoms in a peptide group, atoms in a mainchain group or atoms of a sidechain that are expected to be planar.

Mol	Chain	#Chirality outliers	#Planarity outliers
1	B	0	1

There are no bond length outliers.

All (1) bond angle outliers are listed below:

Mol	Chain	Res	Type	Atoms	Z	Observed($^{\circ}$)	Ideal($^{\circ}$)
1	B	302	ASN	N-CA-C	-5.52	96.09	111.00

There are no chirality outliers.

All (1) planarity outliers are listed below:

Mol	Chain	Res	Type	Group
1	B	329	ARG	Sidechain

5.2 Too-close contacts [i](#)

In the following table, the Non-H and H(model) columns list the number of non-hydrogen atoms and hydrogen atoms in the chain respectively. The H(added) column lists the number of hydrogen atoms added and optimized by MolProbity. The Clashes column lists the number of clashes within

the asymmetric unit, whereas Symm-Clashes lists symmetry related clashes.

Mol	Chain	Non-H	H(model)	H(added)	Clashes	Symm-Clashes
1	A	2932	0	2919	56	0
1	B	2895	0	2887	33	0
2	A	4	0	3	0	0
2	B	16	0	12	0	0
3	A	16	0	8	2	0
3	B	16	0	8	2	0
4	A	238	0	0	3	0
4	B	206	0	0	1	0
All	All	6323	0	5837	83	0

The all-atom clashscore is defined as the number of clashes found per 1000 atoms (including hydrogen atoms). The all-atom clashscore for this structure is 7.

The worst 5 of 83 close contacts within the same asymmetric unit are listed below, sorted by their clash magnitude.

Atom-1	Atom-2	Interatomic distance (Å)	Clash overlap (Å)
1:A:30:LEU:HD21	1:B:185:ILE:HG22	1.56	0.88
1:A:80:PHE:CD2	1:A:131:LEU:CD2	2.70	0.74
1:B:37:PHE:CD2	1:B:193:MET:HE1	2.27	0.70
1:A:104:THR:O	1:A:105:TYR:HB2	1.91	0.69
1:A:82:PHE:CE2	1:A:84:ALA:HB2	2.29	0.68

There are no symmetry-related clashes.

5.3 Torsion angles [i](#)

5.3.1 Protein backbone [i](#)

In the following table, the Percentiles column shows the percent Ramachandran outliers of the chain as a percentile score with respect to all X-ray entries followed by that with respect to entries of similar resolution.

The Analysed column shows the number of residues for which the backbone conformation was analysed, and the total number of residues.

Mol	Chain	Analysed	Favoured	Allowed	Outliers	Percentiles	
1	A	372/394 (94%)	364 (98%)	8 (2%)	0	100	100
1	B	364/394 (92%)	357 (98%)	7 (2%)	0	100	100
All	All	736/788 (93%)	721 (98%)	15 (2%)	0	100	100

There are no Ramachandran outliers to report.

5.3.2 Protein sidechains [i](#)

In the following table, the Percentiles column shows the percent sidechain outliers of the chain as a percentile score with respect to all X-ray entries followed by that with respect to entries of similar resolution.

The Analysed column shows the number of residues for which the sidechain conformation was analysed, and the total number of residues.

Mol	Chain	Analysed	Rotameric	Outliers	Percentiles	
1	A	308/340 (91%)	303 (98%)	5 (2%)	62	60
1	B	305/340 (90%)	302 (99%)	3 (1%)	76	76
All	All	613/680 (90%)	605 (99%)	8 (1%)	69	68

5 of 8 residues with a non-rotameric sidechain are listed below:

Mol	Chain	Res	Type
1	A	292	ASN
1	B	294	LEU
1	B	273	LEU
1	A	227	ASN
1	A	310	LEU

Some sidechains can be flipped to improve hydrogen bonding and reduce clashes. 5 of 8 such sidechains are listed below:

Mol	Chain	Res	Type
1	B	54	ASN
1	B	311	HIS
1	B	241	GLN
1	A	292	ASN
1	B	181	ASN

5.3.3 RNA [i](#)

There are no RNA molecules in this entry.

5.4 Non-standard residues in protein, DNA, RNA chains [i](#)

There are no non-standard protein/DNA/RNA residues in this entry.

5.5 Carbohydrates [i](#)

There are no carbohydrates in this entry.

5.6 Ligand geometry [i](#)

7 ligands are modelled in this entry.

In the following table, the Counts columns list the number of bonds (or angles) for which Mogul statistics could be retrieved, the number of bonds (or angles) that are observed in the model and the number of bonds (or angles) that are defined in the Chemical Component Dictionary. The Link column lists molecule types, if any, to which the group is linked. The Z score for a bond length (or angle) is the number of standard deviations the observed value is removed from the expected value. A bond length (or angle) with $|Z| > 2$ is considered an outlier worth inspection. RMSZ is the root-mean-square of all Z scores of the bond lengths (or angles).

Mol	Type	Chain	Res	Link	Bond lengths			Bond angles		
					Counts	RMSZ	# Z > 2	Counts	RMSZ	# Z > 2
2	ACT	B	398	-	1,3,3	2.65	1 (100%)	0,3,3	0.00	-
2	ACT	B	395	-	1,3,3	2.98	1 (100%)	0,3,3	0.00	-
2	ACT	A	395	-	1,3,3	2.45	1 (100%)	0,3,3	0.00	-
3	PLP	B	399	-	16,16,16	1.84	4 (25%)	20,23,23	1.85	3 (15%)
3	PLP	A	396	-	16,16,16	1.85	4 (25%)	20,23,23	1.85	3 (15%)
2	ACT	B	396	-	1,3,3	2.42	1 (100%)	0,3,3	0.00	-
2	ACT	B	397	-	1,3,3	2.59	1 (100%)	0,3,3	0.00	-

In the following table, the Chirals column lists the number of chiral outliers, the number of chiral centers analysed, the number of these observed in the model and the number defined in the Chemical Component Dictionary. Similar counts are reported in the Torsion and Rings columns. '-' means no outliers of that kind were identified.

Mol	Type	Chain	Res	Link	Chirals	Torsions	Rings
3	PLP	A	396	-	-	2/8/8/8	0/1/1/1
3	PLP	B	399	-	-	2/8/8/8	0/1/1/1

The worst 5 of 13 bond length outliers are listed below:

Mol	Chain	Res	Type	Atoms	Z	Observed(Å)	Ideal(Å)
3	A	396	PLP	C2-N1	3.41	1.40	1.33
3	B	399	PLP	C2-N1	3.39	1.40	1.33
3	B	399	PLP	C6-N1	3.23	1.41	1.34
3	A	396	PLP	C4-C4A	3.21	1.53	1.46

Continued on next page...

Continued from previous page...

Mol	Chain	Res	Type	Atoms	Z	Observed(Å)	Ideal(Å)
3	B	399	PLP	C4-C4A	3.21	1.53	1.46

The worst 5 of 6 bond angle outliers are listed below:

Mol	Chain	Res	Type	Atoms	Z	Observed(°)	Ideal(°)
3	A	396	PLP	O4A-C4A-C4	-5.66	112.57	124.91
3	B	399	PLP	O4A-C4A-C4	-5.61	112.68	124.91
3	B	399	PLP	O4P-C5A-C5	2.97	115.01	109.35
3	A	396	PLP	O4P-C5A-C5	2.88	114.83	109.35
3	B	399	PLP	C3-C4-C5	2.74	120.37	118.26

There are no chirality outliers.

All (4) torsion outliers are listed below:

Mol	Chain	Res	Type	Atoms
3	B	399	PLP	C3-C4-C4A-O4A
3	B	399	PLP	C5-C4-C4A-O4A
3	A	396	PLP	C3-C4-C4A-O4A
3	A	396	PLP	C5-C4-C4A-O4A

There are no ring outliers.

2 monomers are involved in 4 short contacts:

Mol	Chain	Res	Type	Clashes	Symm-Clashes
3	B	399	PLP	2	0
3	A	396	PLP	2	0

5.7 Other polymers [i](#)

There are no such residues in this entry.

5.8 Polymer linkage issues [i](#)

There are no chain breaks in this entry.

6 Fit of model and data [i](#)

6.1 Protein, DNA and RNA chains [i](#)

In the following table, the column labelled '#RSRZ > 2' contains the number (and percentage) of RSRZ outliers, followed by percent RSRZ outliers for the chain as percentile scores relative to all X-ray entries and entries of similar resolution. The OWAB column contains the minimum, median, 95th percentile and maximum values of the occupancy-weighted average B-factor per residue. The column labelled 'Q < 0.9' lists the number of (and percentage) of residues with an average occupancy less than 0.9.

Mol	Chain	Analysed	<RSRZ>	#RSRZ>2	OWAB(Å ²)	Q<0.9
1	A	374/394 (94%)	0.24	12 (3%) 47 50	11, 21, 36, 51	0
1	B	368/394 (93%)	0.21	7 (1%) 66 69	11, 20, 38, 48	0
All	All	742/788 (94%)	0.22	19 (2%) 56 58	11, 21, 38, 51	0

The worst 5 of 19 RSRZ outliers are listed below:

Mol	Chain	Res	Type	RSRZ
1	B	266	TYR	6.1
1	A	266	TYR	5.0
1	B	24	SER	4.8
1	B	23	LYS	3.5
1	B	374	TYR	3.4

6.2 Non-standard residues in protein, DNA, RNA chains [i](#)

There are no non-standard protein/DNA/RNA residues in this entry.

6.3 Carbohydrates [i](#)

There are no carbohydrates in this entry.

6.4 Ligands [i](#)

In the following table, the Atoms column lists the number of modelled atoms in the group and the number defined in the chemical component dictionary. The B-factors column lists the minimum, median, 95th percentile and maximum values of B factors of atoms in the group. The column labelled 'Q < 0.9' lists the number of atoms with occupancy less than 0.9.

Mol	Type	Chain	Res	Atoms	RSCC	RSR	B-factors(\AA^2)	Q<0.9
3	PLP	B	399	16/16	0.36	0.44	53,58,58,59	0
3	PLP	A	396	16/16	0.67	0.30	33,45,48,49	0
2	ACT	B	397	4/4	0.78	0.19	32,33,35,35	0
2	ACT	B	398	4/4	0.84	0.12	45,45,45,46	0
2	ACT	A	395	4/4	0.85	0.21	36,36,36,37	0
2	ACT	B	396	4/4	0.93	0.11	29,29,29,31	0
2	ACT	B	395	4/4	0.96	0.15	34,35,35,36	0

6.5 Other polymers [i](#)

There are no such residues in this entry.