



Full wwPDB X-ray Structure Validation Report ⓘ

Feb 3, 2022 – 12:19 pm GMT

PDB ID : 7O8K
Title : NmHR light state structure at 300 us after photoexcitation determined by serial femtosecond crystallography (with extrapolated, dark and light dataset)
Authors : Mous, S.; Gotthard, G.; Ehrenberg, D.; Sen, S.; James, D.; Johnson, P.; Weinert, T.; Nass, K.; Furrer, A.; Kekilli, D.; Ma, P.; Bruenle, S.; Casadei, C.; Martiel, I.; Dworkowski, F.; Gashi, D.; Skopintsev, P.; Wranik, M.; Knopp, G.; Panepucci, E.; Panneels, V.; Cirelli, C.; Ozerov, D.; Schertler, G.; Wang, M.; Milne, C.; Standfuss, J.; Schapiro, I.; Heberle, J.; Nogly, P.
Deposited on : 2021-04-15
Resolution : 1.90 Å(reported)

This is a Full wwPDB X-ray Structure Validation Report for a publicly released PDB entry.

We welcome your comments at validation@mail.wwpdb.org

A user guide is available at

<https://www.wwpdb.org/validation/2017/XrayValidationReportHelp>

with specific help available everywhere you see the ⓘ symbol.

The following versions of software and data (see [references ⓘ](#)) were used in the production of this report:

MolProbity : 4.02b-467
Mogul : 1.8.4, CSD as541be (2020)
Xtriage (Phenix) : 1.13
EDS : 2.26
buster-report : 1.1.7 (2018)
Percentile statistics : 20191225.v01 (using entries in the PDB archive December 25th 2019)
Refmac : 5.8.0267
CCP4 : 7.1.010 (Gargrove)
Ideal geometry (proteins) : Engh & Huber (2001)
Ideal geometry (DNA, RNA) : Parkinson et al. (1996)
Validation Pipeline (wwPDB-VP) : 2.26

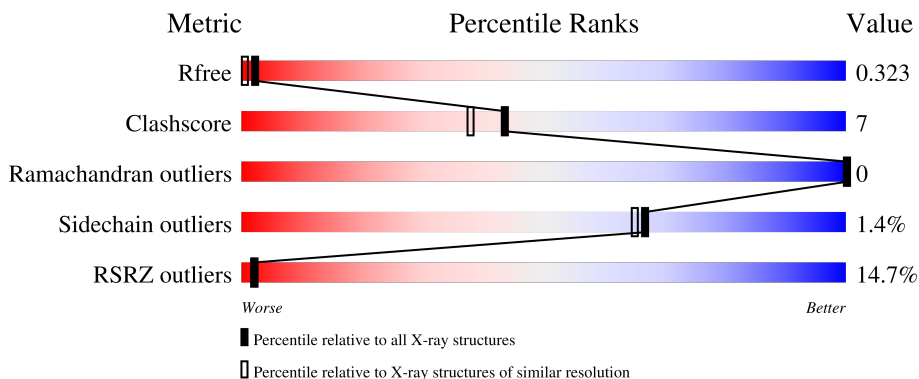
1 Overall quality at a glance

The following experimental techniques were used to determine the structure:

X-RAY DIFFRACTION

The reported resolution of this entry is 1.90 Å.

Percentile scores (ranging between 0-100) for global validation metrics of the entry are shown in the following graphic. The table shows the number of entries on which the scores are based.



Metric	Whole archive (#Entries)	Similar resolution (#Entries, resolution range(Å))
R_{free}	130704	6207 (1.90-1.90)
Clashscore	141614	6847 (1.90-1.90)
Ramachandran outliers	138981	6760 (1.90-1.90)
Sidechain outliers	138945	6760 (1.90-1.90)
RSRZ outliers	127900	6082 (1.90-1.90)

The table below summarises the geometric issues observed across the polymeric chains and their fit to the electron density. The red, orange, yellow and green segments of the lower bar indicate the fraction of residues that contain outliers for ≥ 3 , 2, 1 and 0 types of geometric quality criteria respectively. A grey segment represents the fraction of residues that are not modelled. The numeric value for each fraction is indicated below the corresponding segment, with a dot representing fractions $\leq 5\%$. The upper red bar (where present) indicates the fraction of residues that have poor fit to the electron density. The numeric value is given above the bar.

Mol	Chain	Length	Quality of chain
1	A	296	

2 Entry composition [i](#)

There are 5 unique types of molecules in this entry. The entry contains 2312 atoms, of which 0 are hydrogens and 0 are deuteriums.

In the tables below, the ZeroOcc column contains the number of atoms modelled with zero occupancy, the AltConf column contains the number of residues with at least one atom in alternate conformation and the Trace column contains the number of residues modelled with at most 2 atoms.

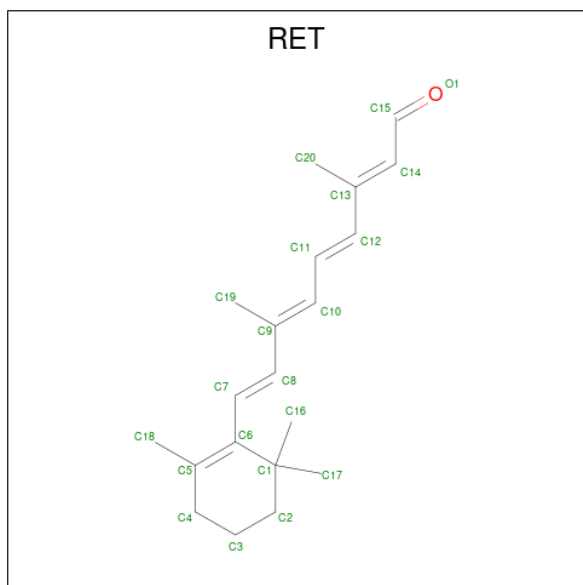
- Molecule 1 is a protein called Chloride pumping rhodopsin.

Mol	Chain	Residues	Atoms					ZeroOcc	AltConf	Trace
			Total	C	N	O	S			
1	A	265	2099	1396	322	364	17	0	3	0

There are 24 discrepancies between the modelled and reference sequences:

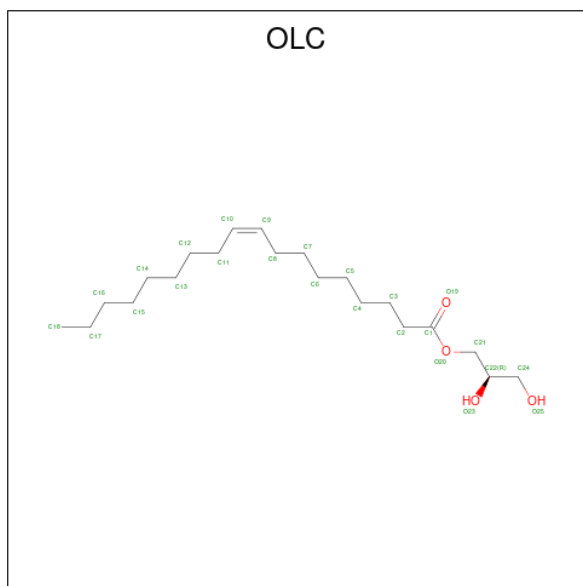
Chain	Residue	Modelled	Actual	Comment	Reference
A	-15	MET	-	initiating methionine	UNP W8VZW3
A	-14	ALA	-	expression tag	UNP W8VZW3
A	-13	SER	-	expression tag	UNP W8VZW3
A	-12	MET	-	expression tag	UNP W8VZW3
A	-11	THR	-	expression tag	UNP W8VZW3
A	-10	GLY	-	expression tag	UNP W8VZW3
A	-9	GLY	-	expression tag	UNP W8VZW3
A	-8	GLN	-	expression tag	UNP W8VZW3
A	-7	GLN	-	expression tag	UNP W8VZW3
A	-6	MET	-	expression tag	UNP W8VZW3
A	-5	GLY	-	expression tag	UNP W8VZW3
A	-4	ARG	-	expression tag	UNP W8VZW3
A	-3	ASP	-	expression tag	UNP W8VZW3
A	-2	PRO	-	expression tag	UNP W8VZW3
A	-1	ASN	-	expression tag	UNP W8VZW3
A	0	SER	-	expression tag	UNP W8VZW3
A	273	LEU	-	expression tag	UNP W8VZW3
A	274	GLU	-	expression tag	UNP W8VZW3
A	275	HIS	-	expression tag	UNP W8VZW3
A	276	HIS	-	expression tag	UNP W8VZW3
A	277	HIS	-	expression tag	UNP W8VZW3
A	278	HIS	-	expression tag	UNP W8VZW3
A	279	HIS	-	expression tag	UNP W8VZW3
A	280	HIS	-	expression tag	UNP W8VZW3

- Molecule 2 is RETINAL (three-letter code: RET) (formula: C₂₀H₂₈O).



Mol	Chain	Residues	Atoms	ZeroOcc	AltConf
2	A	1	Total C 20 20	0	0

- Molecule 3 is (2R)-2,3-dihydroxypropyl (9Z)-octadec-9-enoate (three-letter code: OLC) (formula: $C_{21}H_{40}O_4$).



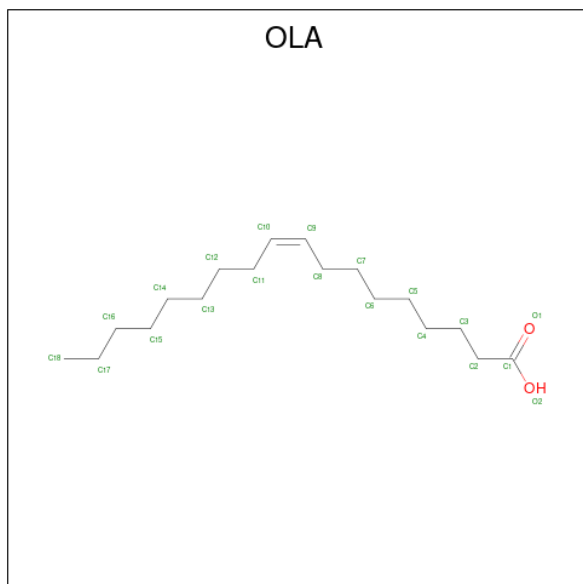
Mol	Chain	Residues	Atoms	ZeroOcc	AltConf
3	A	1	Total C O 25 21 4	0	0
3	A	1	Total C O 25 21 4	0	0

Continued on next page...

Continued from previous page...

Mol	Chain	Residues	Atoms			ZeroOcc	AltConf
3	A	1	Total	C	O	0	0
			25	21	4		

- Molecule 4 is OLEIC ACID (three-letter code: OLA) (formula: $C_{18}H_{34}O_2$).



Mol	Chain	Residues	Atoms			ZeroOcc	AltConf
4	A	1	Total	C	O	0	0
			20	18	2		
4	A	1	Total	C		0	0
			15	15			
4	A	1	Total	C	O	0	0
			11	9	2		
4	A	1	Total	C	O	0	0
			20	18	2		

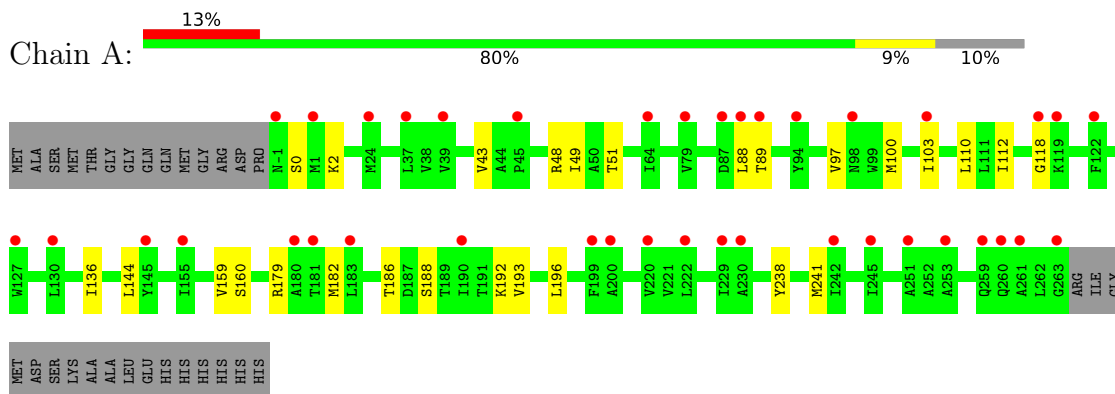
- Molecule 5 is water.

Mol	Chain	Residues	Atoms		ZeroOcc	AltConf
5	A	52	Total	O	0	0
			52	52		

3 Residue-property plots [i](#)

These plots are drawn for all protein, RNA, DNA and oligosaccharide chains in the entry. The first graphic for a chain summarises the proportions of the various outlier classes displayed in the second graphic. The second graphic shows the sequence view annotated by issues in geometry and electron density. Residues are color-coded according to the number of geometric quality criteria for which they contain at least one outlier: green = 0, yellow = 1, orange = 2 and red = 3 or more. A red dot above a residue indicates a poor fit to the electron density ($RSRZ > 2$). Stretches of 2 or more consecutive residues without any outlier are shown as a green connector. Residues present in the sample, but not in the model, are shown in grey.

- Molecule 1: Chloride pumping rhodopsin



4 Data and refinement statistics i

Property	Value	Source
Space group	C 1 2 1	Depositor
Cell constants a, b, c, α , β , γ	104.48Å 51.18Å 78.33Å 90.00° 131.78° 90.00°	Depositor
Resolution (Å)	13.45 – 1.90 13.45 – 1.90	Depositor EDS
% Data completeness (in resolution range)	91.5 (13.45-1.90) 91.2 (13.45-1.90)	Depositor EDS
R_{merge}	(Not available)	Depositor
R_{sym}	(Not available)	Depositor
$\langle I/\sigma(I) \rangle$ ¹	4.43 (at 1.91Å)	Xtrriage
Refinement program	PHENIX 1.19.1_4122	Depositor
R, R_{free}	0.305 , 0.344 0.295 , 0.323	Depositor DCC
R_{free} test set	1152 reflections (5.16%)	wwPDB-VP
Wilson B-factor (Å ²)	23.4	Xtrriage
Anisotropy	1.123	Xtrriage
Bulk solvent k_{sol} (e/Å ³), B_{sol} (Å ²)	(Not available) , (Not available)	EDS
L-test for twinning ²	$\langle L \rangle = 0.45$, $\langle L^2 \rangle = 0.29$	Xtrriage
Estimated twinning fraction	0.058 for h,-k,-h-l	Xtrriage
F_o, F_c correlation	0.88	EDS
Total number of atoms	2312	wwPDB-VP
Average B, all atoms (Å ²)	27.0	wwPDB-VP

Xtrriage's analysis on translational NCS is as follows: *The largest off-origin peak in the Patterson function is 6.69% of the height of the origin peak. No significant pseudotranslation is detected.*

¹Intensities estimated from amplitudes.

²Theoretical values of $\langle |L| \rangle$, $\langle L^2 \rangle$ for acentric reflections are 0.5, 0.333 respectively for untwinned datasets, and 0.375, 0.2 for perfectly twinned datasets.

5 Model quality [i](#)

5.1 Standard geometry [i](#)

Bond lengths and bond angles in the following residue types are not validated in this section: OLC, OLA, RET

The Z score for a bond length (or angle) is the number of standard deviations the observed value is removed from the expected value. A bond length (or angle) with $|Z| > 5$ is considered an outlier worth inspection. RMSZ is the root-mean-square of all Z scores of the bond lengths (or angles).

Mol	Chain	Bond lengths		Bond angles	
		RMSZ	# Z >5	RMSZ	# Z >5
1	A	0.67	0/2155	0.57	0/2936

There are no bond length outliers.

There are no bond angle outliers.

There are no chirality outliers.

There are no planarity outliers.

5.2 Too-close contacts [i](#)

In the following table, the Non-H and H(model) columns list the number of non-hydrogen atoms and hydrogen atoms in the chain respectively. The H(added) column lists the number of hydrogen atoms added and optimized by MolProbity. The Clashes column lists the number of clashes within the asymmetric unit, whereas Symm-Clashes lists symmetry-related clashes.

Mol	Chain	Non-H	H(model)	H(added)	Clashes	Symm-Clashes
1	A	2099	0	2129	25	0
2	A	20	0	27	7	0
3	A	75	0	120	0	0
4	A	66	0	104	2	0
5	A	52	0	0	2	1
All	All	2312	0	2380	31	1

The all-atom clashscore is defined as the number of clashes found per 1000 atoms (including hydrogen atoms). The all-atom clashscore for this structure is 7.

All (31) close contacts within the same asymmetric unit are listed below, sorted by their clash magnitude.

Atom-1	Atom-2	Interatomic distance (Å)	Clash overlap (Å)
1:A:193:VAL:HG22	1:A:241[A]:MET:HE3	1.66	0.75
1:A:103:ILE:HD12	1:A:136:ILE:HD11	1.75	0.69
2:A:301:RET:H8	2:A:301:RET:H171	1.75	0.69
1:A:49:ILE:CG2	1:A:112:ILE:HD13	2.29	0.63
1:A:196:LEU:HD22	1:A:241[A]:MET:CE	2.31	0.59
1:A:49:ILE:HG23	1:A:112:ILE:HD13	1.85	0.58
1:A:188:SER:O	1:A:192:LYS:NZ	2.33	0.55
1:A:196:LEU:HD22	1:A:241[A]:MET:HE1	1.89	0.53
2:A:301:RET:H161	2:A:301:RET:C8	2.40	0.52
1:A:179:ARG:HA	1:A:182[B]:MET:HG3	1.92	0.51
1:A:43:VAL:HG21	1:A:51:THR:HG21	1.92	0.51
1:A:103:ILE:HG12	2:A:301:RET:H202	1.94	0.49
2:A:301:RET:H8	2:A:301:RET:H161	1.96	0.47
1:A:118:GLY:HA3	5:A:442:HOH:O	2.15	0.47
1:A:0:SER:HB2	1:A:88:LEU:HD22	1.97	0.45
1:A:196:LEU:HD22	1:A:241[A]:MET:HE2	1.98	0.45
1:A:182[A]:MET:HB3	1:A:186:THR:OG1	2.17	0.45
2:A:301:RET:H7	2:A:301:RET:H181	1.78	0.45
2:A:301:RET:H171	2:A:301:RET:C8	2.44	0.45
1:A:179:ARG:HA	1:A:182[A]:MET:HG2	1.99	0.44
4:A:305:OLA:H32	4:A:305:OLA:H62	1.62	0.44
1:A:0:SER:HB2	1:A:88:LEU:HB3	1.99	0.43
1:A:110:LEU:HB2	1:A:238:TYR:OH	2.19	0.43
1:A:48:ARG:HG2	5:A:411:HOH:O	2.19	0.43
1:A:159:VAL:HG21	4:A:307:OLA:H81	2.01	0.42
1:A:49:ILE:HG21	1:A:112:ILE:HD13	1.99	0.42
1:A:160:SER:HB3	2:A:301:RET:H41	2.01	0.42
1:A:2:LYS:HD2	1:A:144:LEU:HD22	2.02	0.42
1:A:0:SER:HB2	1:A:88:LEU:CD2	2.51	0.41
1:A:193:VAL:HA	1:A:241[A]:MET:HE3	2.03	0.41
1:A:182[B]:MET:HB3	1:A:186:THR:OG1	2.20	0.41

All (1) symmetry-related close contacts are listed below. The label for Atom-2 includes the symmetry operator and encoded unit-cell translations to be applied.

Atom-1	Atom-2	Interatomic distance (Å)	Clash overlap (Å)
5:A:445:HOH:O	5:A:450:HOH:O[3_454]	2.01	0.19

5.3 Torsion angles [i](#)

5.3.1 Protein backbone [i](#)

In the following table, the Percentiles column shows the percent Ramachandran outliers of the chain as a percentile score with respect to all X-ray entries followed by that with respect to entries of similar resolution.

The Analysed column shows the number of residues for which the backbone conformation was analysed, and the total number of residues.

Mol	Chain	Analysed	Favoured	Allowed	Outliers	Percentiles
1	A	266/296 (90%)	264 (99%)	2 (1%)	0	100 100

There are no Ramachandran outliers to report.

5.3.2 Protein sidechains [i](#)

In the following table, the Percentiles column shows the percent sidechain outliers of the chain as a percentile score with respect to all X-ray entries followed by that with respect to entries of similar resolution.

The Analysed column shows the number of residues for which the sidechain conformation was analysed, and the total number of residues.

Mol	Chain	Analysed	Rotameric	Outliers	Percentiles
1	A	221/242 (91%)	218 (99%)	3 (1%)	67 65

All (3) residues with a non-rotameric sidechain are listed below:

Mol	Chain	Res	Type
1	A	89	THR
1	A	97	VAL
1	A	100	MET

Sometimes sidechains can be flipped to improve hydrogen bonding and reduce clashes. All (1) such sidechains are listed below:

Mol	Chain	Res	Type
1	A	152	GLN

5.3.3 RNA [i](#)

There are no RNA molecules in this entry.

5.4 Non-standard residues in protein, DNA, RNA chains [i](#)

There are no non-standard protein/DNA/RNA residues in this entry.

5.5 Carbohydrates [i](#)

There are no monosaccharides in this entry.

5.6 Ligand geometry [i](#)

8 ligands are modelled in this entry.

In the following table, the Counts columns list the number of bonds (or angles) for which Mogul statistics could be retrieved, the number of bonds (or angles) that are observed in the model and the number of bonds (or angles) that are defined in the Chemical Component Dictionary. The Link column lists molecule types, if any, to which the group is linked. The Z score for a bond length (or angle) is the number of standard deviations the observed value is removed from the expected value. A bond length (or angle) with $|Z| > 2$ is considered an outlier worth inspection. RMSZ is the root-mean-square of all Z scores of the bond lengths (or angles).

Mol	Type	Chain	Res	Link	Bond lengths			Bond angles		
					Counts	RMSZ	# Z > 2	Counts	RMSZ	# Z > 2
4	OLA	A	307	-	7,10,19	0.39	0	6,10,19	0.60	0
3	OLC	A	306	-	24,24,24	0.79	2 (8%)	25,25,25	0.95	1 (4%)
3	OLC	A	303	-	24,24,24	0.73	1 (4%)	25,25,25	0.91	1 (4%)
4	OLA	A	308	-	16,19,19	0.81	1 (6%)	15,19,19	0.59	0
4	OLA	A	304	-	16,19,19	0.84	1 (6%)	15,19,19	0.59	0
3	OLC	A	302	-	24,24,24	0.96	2 (8%)	25,25,25	1.06	1 (4%)
4	OLA	A	305	-	14,14,19	1.37	2 (14%)	13,13,19	1.11	2 (15%)
2	RET	A	301	1	20,20,21	1.23	3 (15%)	27,27,28	1.83	9 (33%)

In the following table, the Chirals column lists the number of chiral outliers, the number of chiral centers analysed, the number of these observed in the model and the number defined in the Chemical Component Dictionary. Similar counts are reported in the Torsion and Rings columns. '-' means no outliers of that kind were identified.

Mol	Type	Chain	Res	Link	Chirals	Torsions	Rings
4	OLA	A	307	-	-	2/6/8/17	-
3	OLC	A	306	-	-	8/24/24/24	-
3	OLC	A	303	-	-	12/24/24/24	-
4	OLA	A	308	-	-	10/15/17/17	-

Continued on next page...

Continued from previous page...

Mol	Type	Chain	Res	Link	Chirals	Torsions	Rings
4	OLA	A	304	-	-	9/15/17/17	-
3	OLC	A	302	-	-	7/24/24/24	-
4	OLA	A	305	-	-	7/12/12/17	-
2	RET	A	301	1	-	0/13/30/31	0/1/1/1

All (12) bond length outliers are listed below:

Mol	Chain	Res	Type	Atoms	Z	Observed(Å)	Ideal(Å)
4	A	305	OLA	C7-C6	-3.63	1.31	1.51
4	A	305	OLA	C10-C9	3.54	1.52	1.31
3	A	302	OLC	O20-C1	3.27	1.42	1.33
2	A	301	RET	C10-C9	-3.24	1.31	1.35
4	A	304	OLA	C10-C9	3.10	1.49	1.31
4	A	308	OLA	C10-C9	2.89	1.48	1.31
3	A	306	OLC	O20-C1	2.60	1.40	1.33
3	A	303	OLC	O20-C1	2.51	1.40	1.33
2	A	301	RET	C1-C6	-2.31	1.50	1.53
3	A	302	OLC	O20-C21	-2.21	1.40	1.45
3	A	306	OLC	O20-C21	-2.05	1.40	1.45
2	A	301	RET	C12-C13	2.00	1.50	1.45

All (14) bond angle outliers are listed below:

Mol	Chain	Res	Type	Atoms	Z	Observed(°)	Ideal(°)
2	A	301	RET	C11-C12-C13	-3.88	115.53	126.42
2	A	301	RET	C2-C1-C6	3.28	115.53	110.48
2	A	301	RET	C1-C6-C5	-3.11	118.23	122.61
3	A	302	OLC	O20-C1-C2	3.09	121.61	111.91
2	A	301	RET	C4-C5-C6	2.90	126.94	122.73
4	A	305	OLA	C6-C7-C8	2.71	125.61	113.79
3	A	303	OLC	O20-C1-C2	2.65	120.23	111.91
2	A	301	RET	C3-C4-C5	-2.64	109.36	114.08
3	A	306	OLC	O20-C1-C2	2.47	119.67	111.91
2	A	301	RET	C8-C9-C10	2.34	122.53	118.94
2	A	301	RET	C20-C13-C14	-2.20	117.19	123.71
4	A	305	OLA	C7-C6-C5	2.20	125.58	114.42
2	A	301	RET	C19-C9-C10	-2.09	119.99	122.92
2	A	301	RET	C18-C5-C4	-2.05	109.69	113.62

There are no chirality outliers.

All (55) torsion outliers are listed below:

Mol	Chain	Res	Type	Atoms
3	A	303	OLC	C21-C22-C24-O25
3	A	303	OLC	O23-C22-C24-O25
4	A	308	OLA	C1-C2-C3-C4
3	A	306	OLC	O19-C1-O20-C21
3	A	306	OLC	C2-C1-O20-C21
4	A	305	OLA	C3-C4-C5-C6
4	A	305	OLA	C5-C6-C7-C8
4	A	304	OLA	C4-C5-C6-C7
3	A	303	OLC	C1-C2-C3-C4
3	A	302	OLC	C2-C1-O20-C21
4	A	305	OLA	C6-C7-C8-C9
3	A	303	OLC	C4-C5-C6-C7
3	A	303	OLC	C3-C4-C5-C6
3	A	303	OLC	C13-C14-C15-C16
3	A	303	OLC	C12-C13-C14-C15
4	A	304	OLA	C2-C3-C4-C5
4	A	304	OLA	C12-C13-C14-C15
4	A	305	OLA	C4-C5-C6-C7
4	A	307	OLA	C2-C3-C4-C5
3	A	306	OLC	C13-C14-C15-C16
3	A	302	OLC	O19-C1-O20-C21
3	A	303	OLC	C11-C12-C13-C14
4	A	308	OLA	C11-C12-C13-C14
4	A	308	OLA	C12-C13-C14-C15
4	A	304	OLA	C6-C7-C8-C9
3	A	302	OLC	C11-C12-C13-C14
4	A	304	OLA	C11-C12-C13-C14
4	A	308	OLA	C4-C5-C6-C7
4	A	304	OLA	C11-C10-C9-C8
4	A	308	OLA	C3-C4-C5-C6
4	A	305	OLA	C9-C10-C11-C12
3	A	302	OLC	C1-C2-C3-C4
3	A	302	OLC	C12-C13-C14-C15
3	A	303	OLC	C2-C1-O20-C21
3	A	302	OLC	C14-C15-C16-C17
3	A	303	OLC	O19-C1-O20-C21
3	A	302	OLC	C10-C11-C12-C13
4	A	308	OLA	C6-C7-C8-C9
4	A	305	OLA	C1-C2-C3-C4
3	A	306	OLC	C21-C22-C24-O25
4	A	304	OLA	C15-C16-C17-C18
4	A	308	OLA	C5-C6-C7-C8
4	A	308	OLA	C2-C3-C4-C5

Continued on next page...

Continued from previous page...

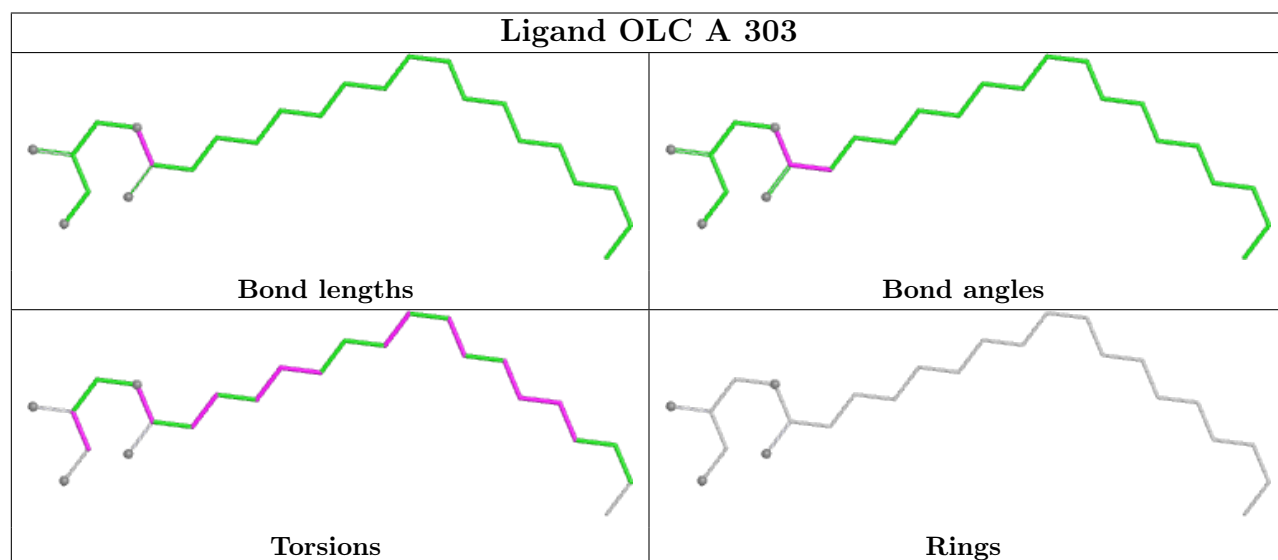
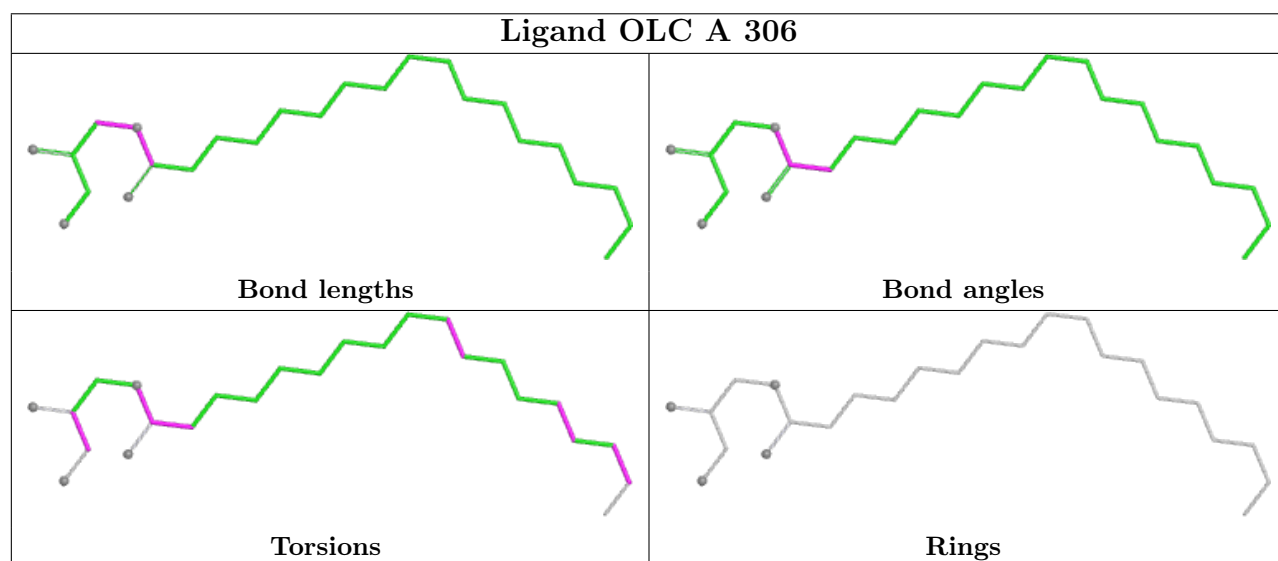
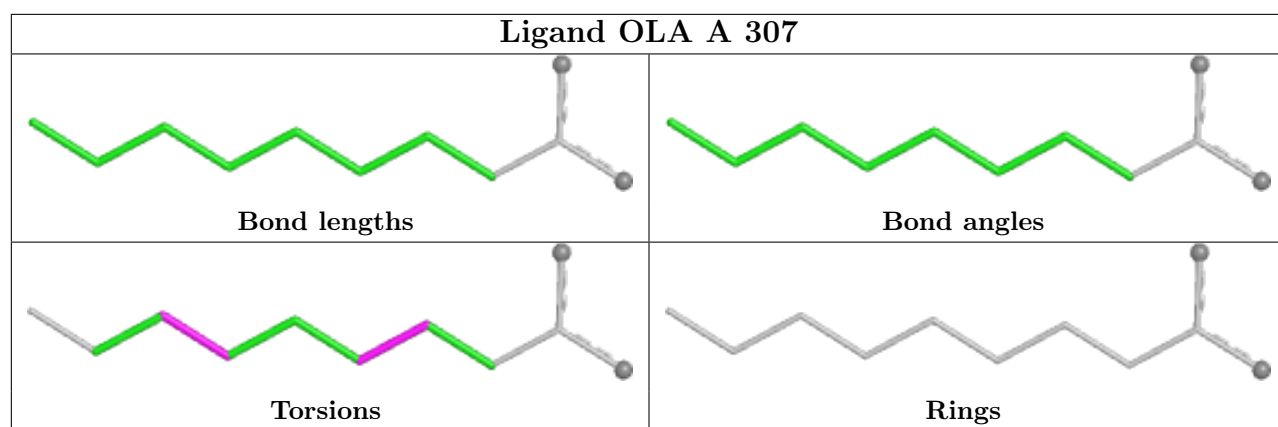
Mol	Chain	Res	Type	Atoms
3	A	306	OLC	O23-C22-C24-O25
4	A	308	OLA	C11-C10-C9-C8
4	A	307	OLA	C5-C6-C7-C8
3	A	303	OLC	C9-C10-C11-C12
3	A	306	OLC	C9-C10-C11-C12
4	A	304	OLA	C9-C10-C11-C12
4	A	304	OLA	C7-C8-C9-C10
3	A	303	OLC	C7-C8-C9-C10
4	A	308	OLA	C9-C10-C11-C12
3	A	306	OLC	C15-C16-C17-C18
3	A	306	OLC	O20-C1-C2-C3
4	A	305	OLA	C12-C13-C14-C15

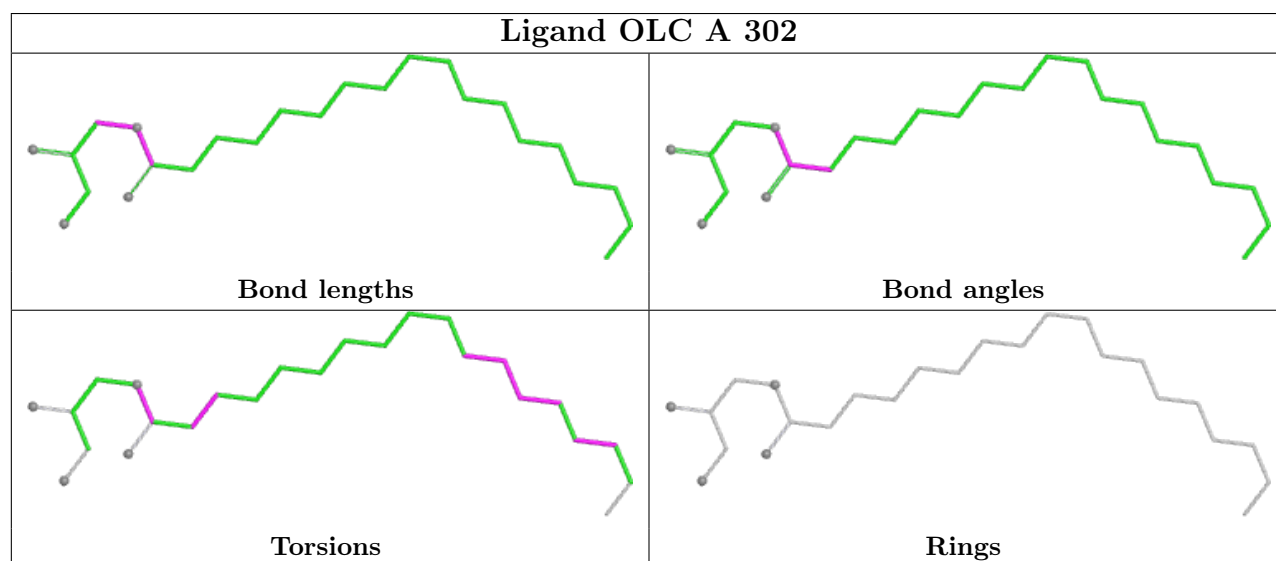
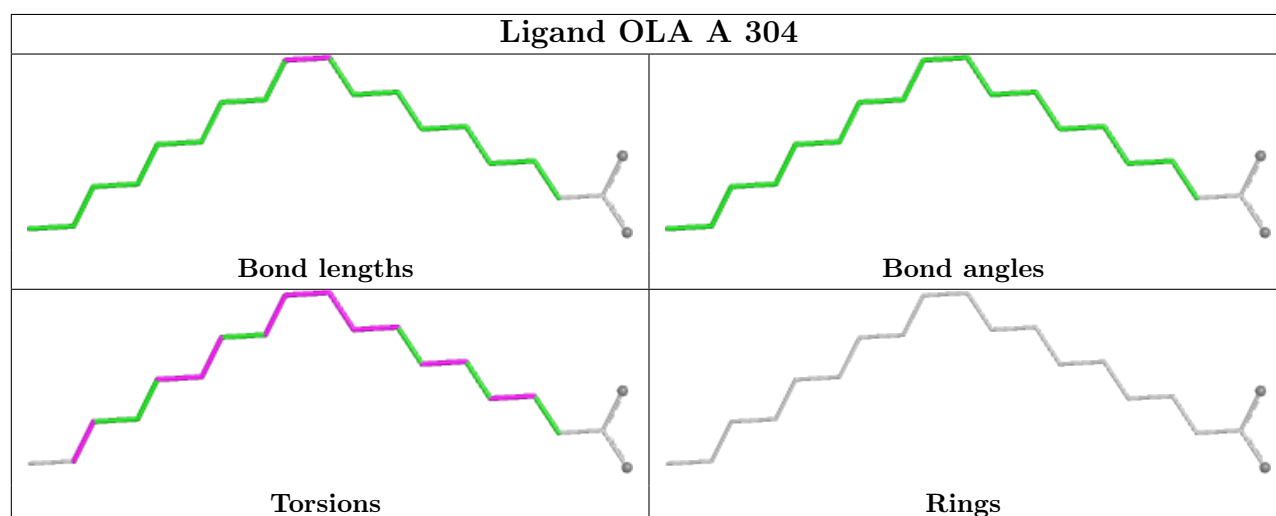
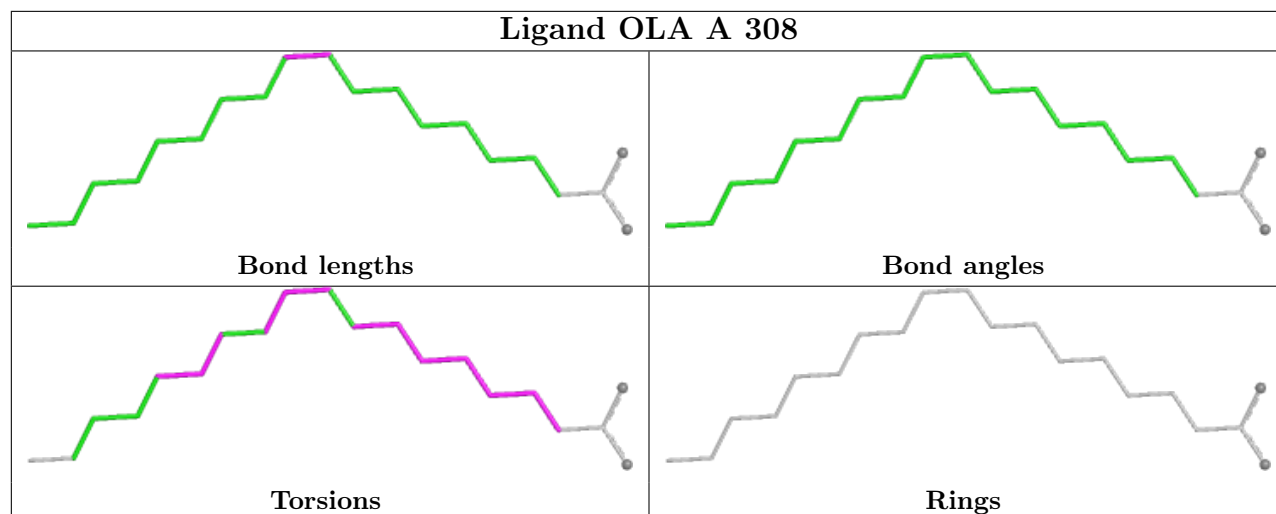
There are no ring outliers.

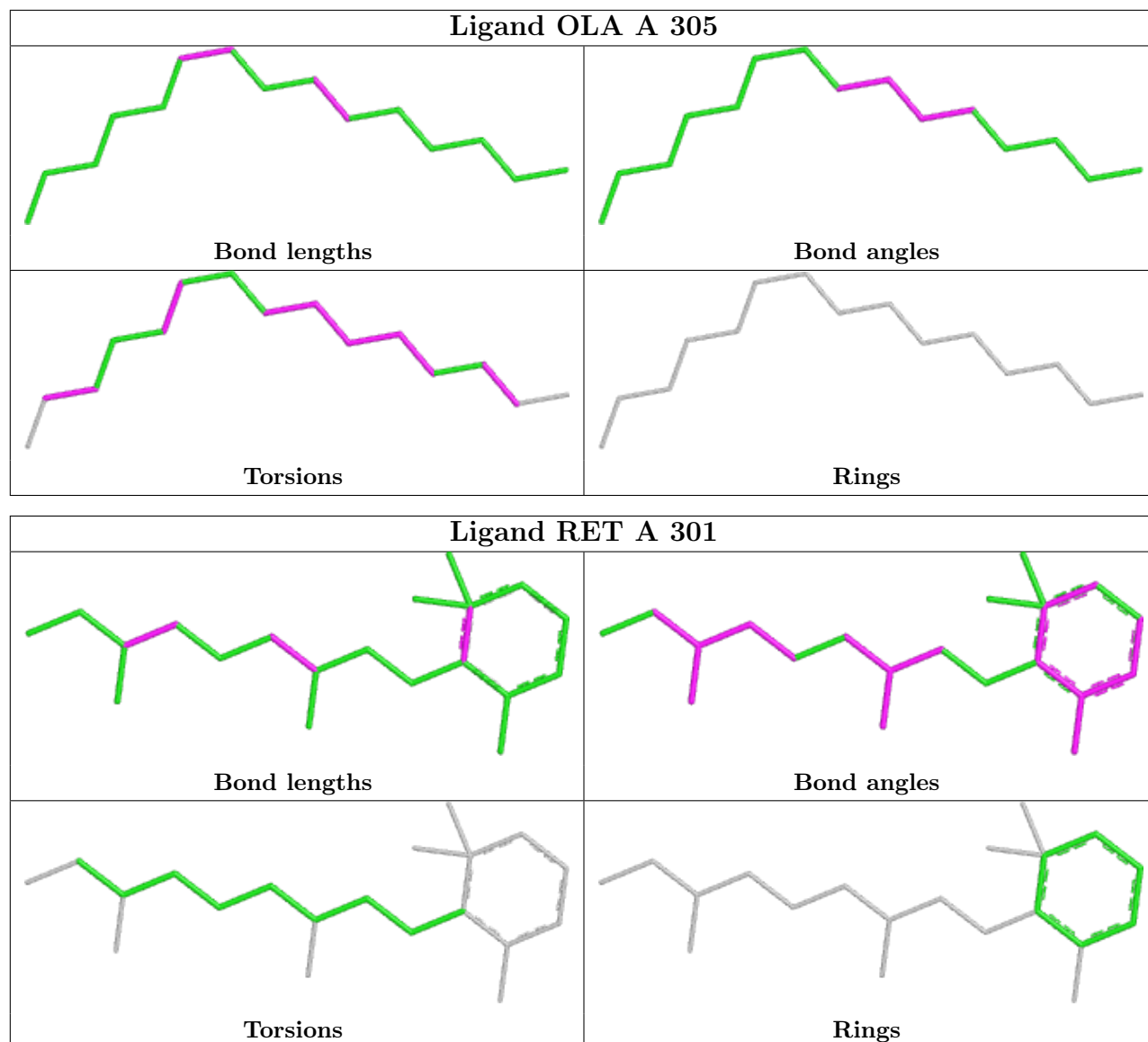
3 monomers are involved in 9 short contacts:

Mol	Chain	Res	Type	Clashes	Symm-Clashes
4	A	307	OLA	1	0
4	A	305	OLA	1	0
2	A	301	RET	7	0

The following is a two-dimensional graphical depiction of Mogul quality analysis of bond lengths, bond angles, torsion angles, and ring geometry for all instances of the Ligand of Interest. In addition, ligands with molecular weight > 250 and outliers as shown on the validation Tables will also be included. For torsion angles, if less than 5% of the Mogul distribution of torsion angles is within 10 degrees of the torsion angle in question, then that torsion angle is considered an outlier. Any bond that is central to one or more torsion angles identified as an outlier by Mogul will be highlighted in the graph. For rings, the root-mean-square deviation (RMSD) between the ring in question and similar rings identified by Mogul is calculated over all ring torsion angles. If the average RMSD is greater than 60 degrees and the minimal RMSD between the ring in question and any Mogul-identified rings is also greater than 60 degrees, then that ring is considered an outlier. The outliers are highlighted in purple. The color gray indicates Mogul did not find sufficient equivalents in the CSD to analyse the geometry.







5.7 Other polymers [i](#)

There are no such residues in this entry.

5.8 Polymer linkage issues [i](#)

There are no chain breaks in this entry.

6 Fit of model and data [i](#)

6.1 Protein, DNA and RNA chains [i](#)

In the following table, the column labelled ‘#RSRZ> 2’ contains the number (and percentage) of RSRZ outliers, followed by percent RSRZ outliers for the chain as percentile scores relative to all X-ray entries and entries of similar resolution. The OWAB column contains the minimum, median, 95th percentile and maximum values of the occupancy-weighted average B-factor per residue. The column labelled ‘Q< 0.9’ lists the number of (and percentage) of residues with an average occupancy less than 0.9.

Mol	Chain	Analysed	<RSRZ>	#RSRZ>2	OWAB(Å ²)	Q<0.9
1	A	265/296 (89%)	1.12	39 (14%) 2 2	22, 27, 35, 50	0

All (39) RSRZ outliers are listed below:

Mol	Chain	Res	Type	RSRZ
1	A	260	GLN	4.7
1	A	45	PRO	4.7
1	A	-1	ASN	4.4
1	A	89	THR	4.0
1	A	222	LEU	3.8
1	A	261	ALA	3.7
1	A	88	LEU	3.7
1	A	127	TRP	3.6
1	A	1	MET	3.4
1	A	263	GLY	3.4
1	A	145	TYR	3.2
1	A	251	ALA	3.1
1	A	118	GLY	3.1
1	A	122[A]	PHE	3.0
1	A	181	THR	2.9
1	A	119	LYS	2.7
1	A	94	TYR	2.7
1	A	24	MET	2.6
1	A	180	ALA	2.6
1	A	103	ILE	2.6
1	A	98	ASN	2.6
1	A	253	ALA	2.5
1	A	37	LEU	2.5
1	A	155	ILE	2.5
1	A	230	ALA	2.5
1	A	130	LEU	2.4
1	A	242	ILE	2.4

Continued on next page...

Continued from previous page...

Mol	Chain	Res	Type	RSRZ
1	A	245	ILE	2.4
1	A	79	VAL	2.4
1	A	190	ILE	2.4
1	A	87	ASP	2.3
1	A	199	PHE	2.3
1	A	39	VAL	2.3
1	A	220	VAL	2.2
1	A	64	ILE	2.2
1	A	259	GLN	2.1
1	A	200	ALA	2.1
1	A	183	LEU	2.1
1	A	229	ILE	2.1

6.2 Non-standard residues in protein, DNA, RNA chains [i](#)

There are no non-standard protein/DNA/RNA residues in this entry.

6.3 Carbohydrates [i](#)

There are no monosaccharides in this entry.

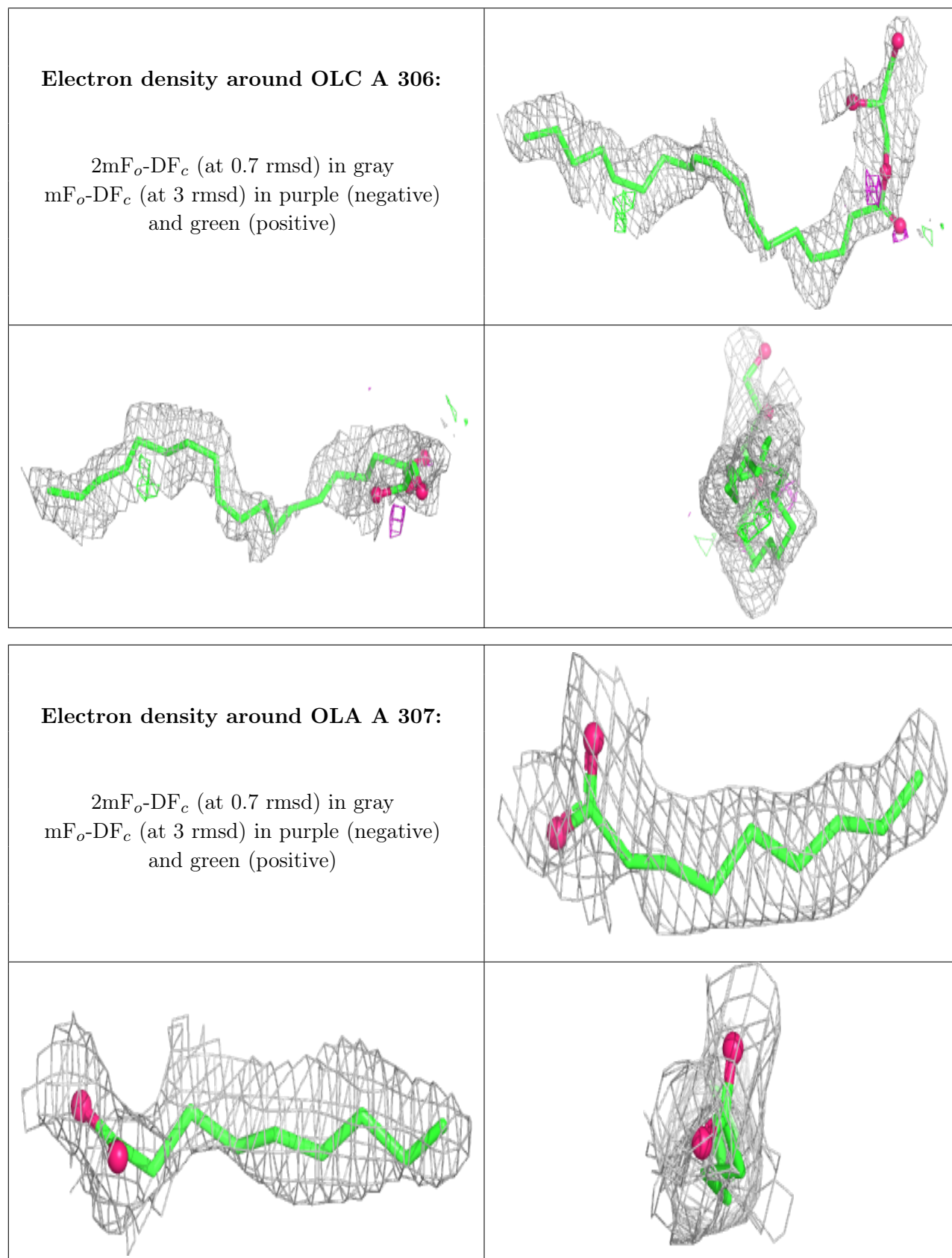
6.4 Ligands [i](#)

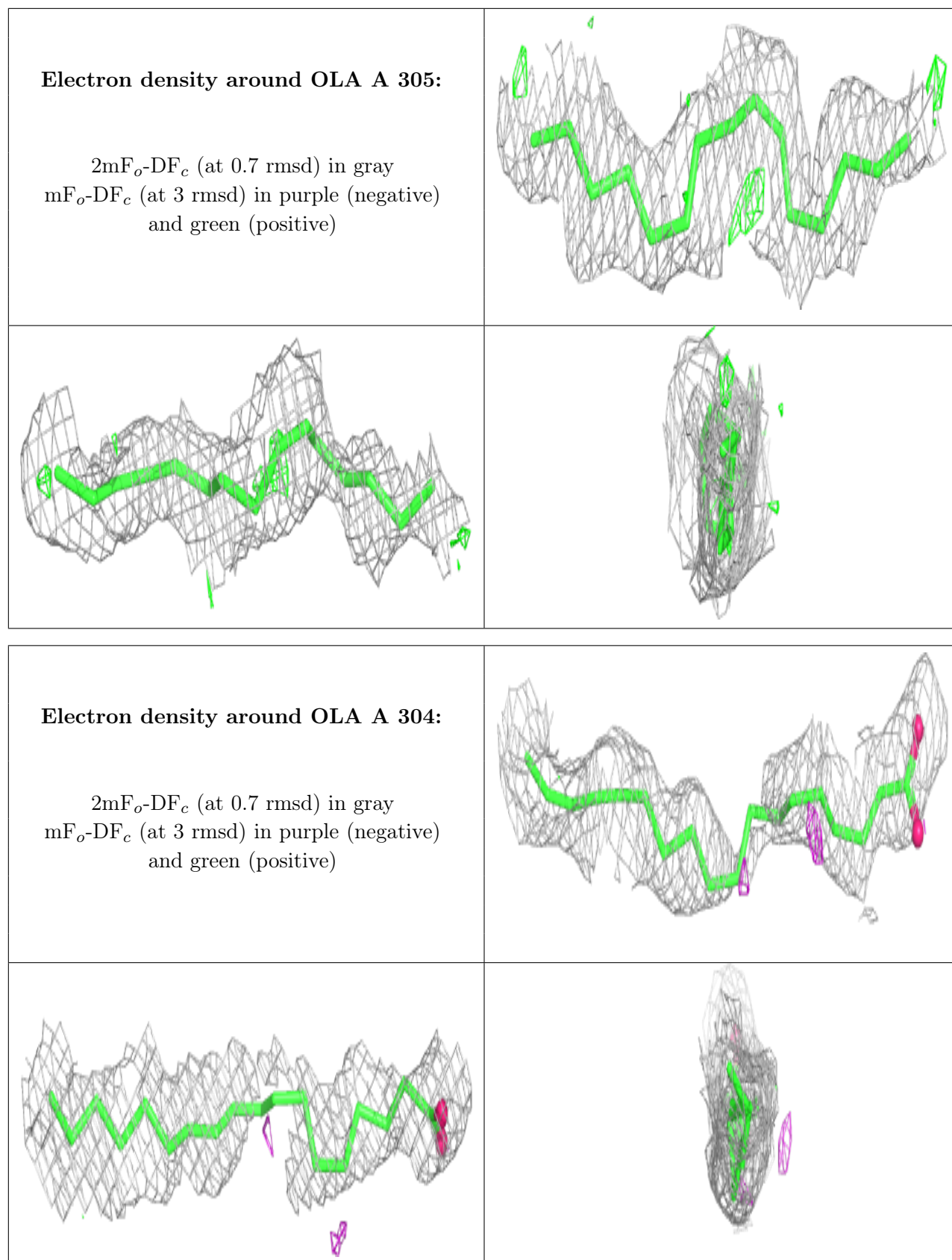
In the following table, the Atoms column lists the number of modelled atoms in the group and the number defined in the chemical component dictionary. The B-factors column lists the minimum, median, 95th percentile and maximum values of B factors of atoms in the group. The column labelled 'Q< 0.9' lists the number of atoms with occupancy less than 0.9.

Mol	Type	Chain	Res	Atoms	RSCC	RSR	B-factors(Å ²)	Q<0.9
3	OLC	A	306	25/25	0.45	0.31	33,36,46,48	0
4	OLA	A	307	11/20	0.52	0.22	29,32,36,37	0
4	OLA	A	305	15/20	0.54	0.19	33,34,38,40	0
4	OLA	A	304	20/20	0.56	0.23	32,35,39,39	0
3	OLC	A	302	25/25	0.57	0.21	24,29,32,33	0
4	OLA	A	308	20/20	0.57	0.22	28,35,42,43	0
3	OLC	A	303	25/25	0.62	0.27	28,33,36,38	0
2	RET	A	301	20/21	0.79	0.17	20,22,26,27	0

The following is a graphical depiction of the model fit to experimental electron density of all instances of the Ligand of Interest. In addition, ligands with molecular weight > 250 and outliers

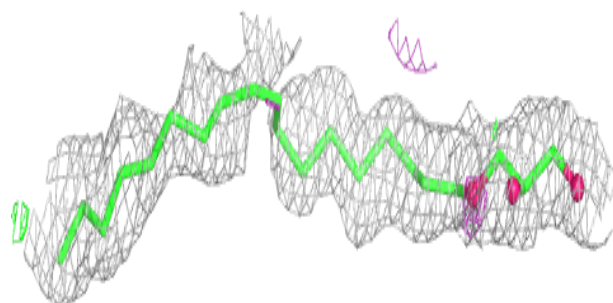
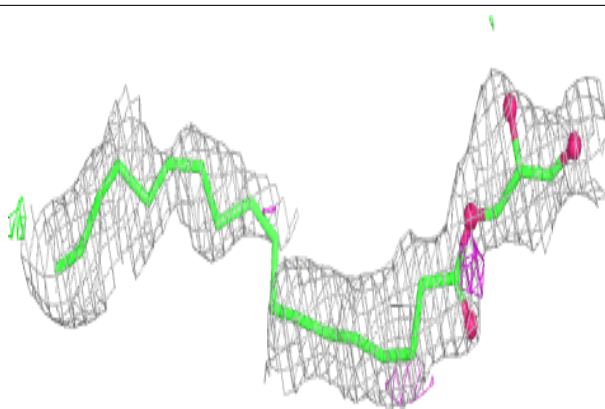
as shown on the geometry validation Tables will also be included. Each fit is shown from different orientation to approximate a three-dimensional view.



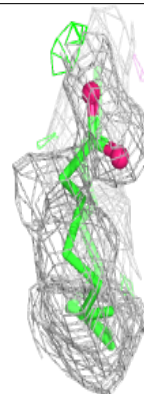
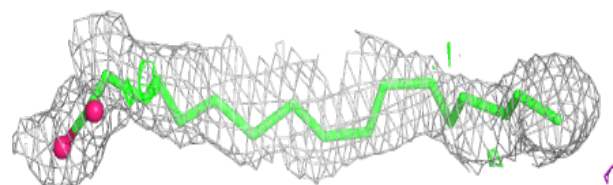
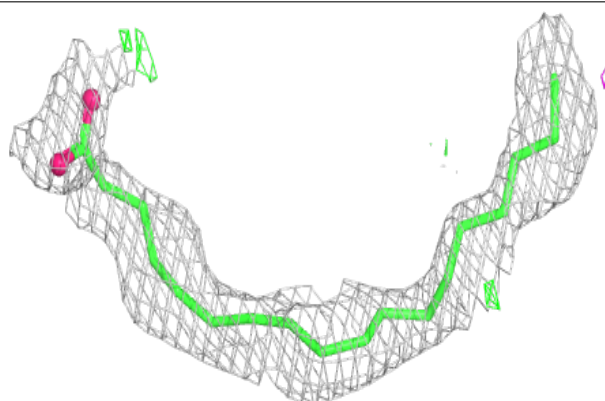


Electron density around OLC A 302:

$2mF_o-DF_c$ (at 0.7 rmsd) in gray
 mF_o-DF_c (at 3 rmsd) in purple (negative)
and green (positive)

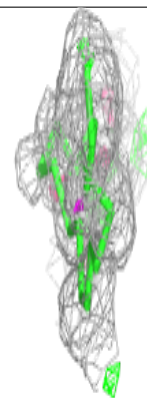
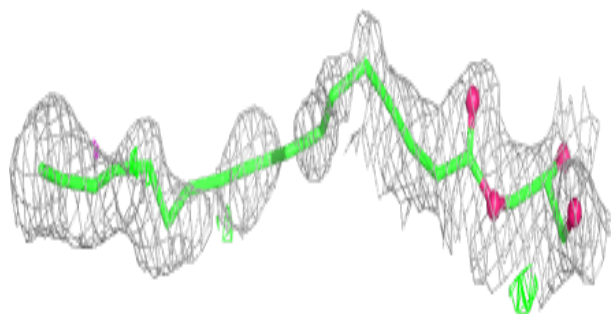
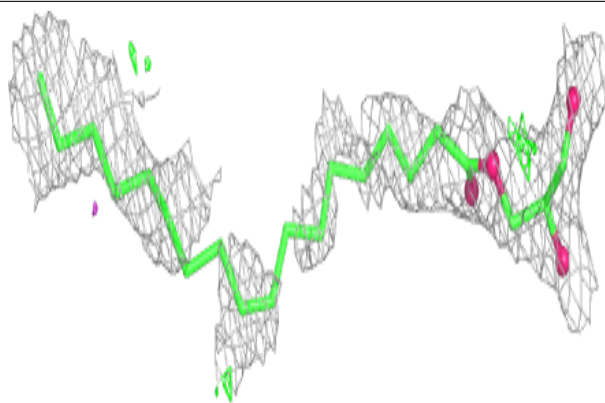
**Electron density around OLA A 308:**

$2mF_o-DF_c$ (at 0.7 rmsd) in gray
 mF_o-DF_c (at 3 rmsd) in purple (negative)
and green (positive)

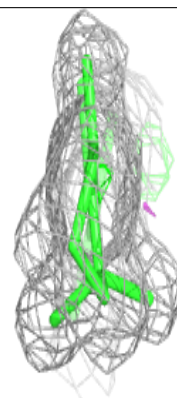
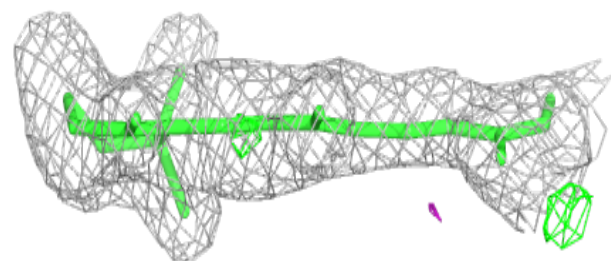
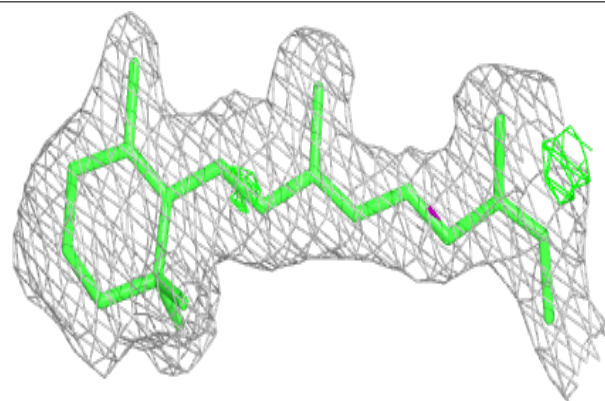


Electron density around OLC A 303:

$2mF_o-DF_c$ (at 0.7 rmsd) in gray
 mF_o-DF_c (at 3 rmsd) in purple (negative)
and green (positive)

**Electron density around RET A 301:**

$2mF_o-DF_c$ (at 0.7 rmsd) in gray
 mF_o-DF_c (at 3 rmsd) in purple (negative)
and green (positive)



6.5 Other polymers [i](#)

There are no such residues in this entry.