



wwPDB X-ray Structure Validation Summary Report ⓘ

Jun 14, 2020 – 04:39 am BST

PDB ID : 1O9L
Title : Succinate:Coenzyme-A Transferase (pig heart)
Authors : Mitchell, E.P.; Lloyd, A.J.; Lewis, G.; Shoolingin-Jordan, P.
Deposited on : 2002-12-17
Resolution : 2.40 Å(reported)

This is a wwPDB X-ray Structure Validation Summary Report for a publicly released PDB entry.

We welcome your comments at validation@mail.wwpdb.org

A user guide is available at

<https://www.wwpdb.org/validation/2017/XrayValidationReportHelp>

with specific help available everywhere you see the ⓘ symbol.

The following versions of software and data (see [references ⓘ](#)) were used in the production of this report:

MolProbity : 4.02b-467
Mogul : 1.8.5 (274361), CSD as541be (2020)
Xtriage (Phenix) : 1.13
EDS : 2.11
buster-report : 1.1.7 (2018)
Percentile statistics : 20191225.v01 (using entries in the PDB archive December 25th 2019)
Refmac : 5.8.0158
CCP4 : 7.0.044 (Gargrove)
Ideal geometry (proteins) : Engh & Huber (2001)
Ideal geometry (DNA, RNA) : Parkinson et al. (1996)
Validation Pipeline (wwPDB-VP) : 2.11

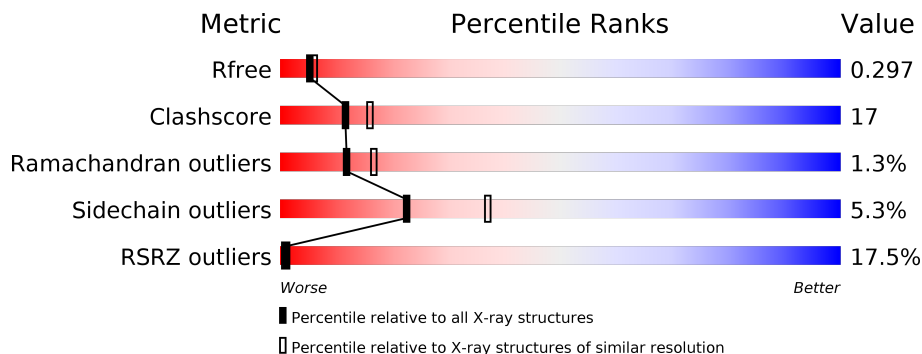
1 Overall quality at a glance

The following experimental techniques were used to determine the structure:

X-RAY DIFFRACTION

The reported resolution of this entry is 2.40 Å.

Percentile scores (ranging between 0-100) for global validation metrics of the entry are shown in the following graphic. The table shows the number of entries on which the scores are based.



Metric	Whole archive (#Entries)	Similar resolution (#Entries, resolution range(Å))
R_{free}	130704	3907 (2.40-2.40)
Clashscore	141614	4398 (2.40-2.40)
Ramachandran outliers	138981	4318 (2.40-2.40)
Sidechain outliers	138945	4319 (2.40-2.40)
RSRZ outliers	127900	3811 (2.40-2.40)

The table below summarises the geometric issues observed across the polymeric chains and their fit to the electron density. The red, orange, yellow and green segments on the lower bar indicate the fraction of residues that contain outliers for ≥ 3 , 2, 1 and 0 types of geometric quality criteria respectively. A grey segment represents the fraction of residues that are not modelled. The numeric value for each fraction is indicated below the corresponding segment, with a dot representing fractions $\leq 5\%$. The upper red bar (where present) indicates the fraction of residues that have poor fit to the electron density. The numeric value is given above the bar.

Mol	Chain	Length	Quality of chain
1	A	481	 19% 66% 28% . .
1	B	481	 16% 65% 21% . 12%
1	C	481	 15% 60% 25% . 12%
1	D	481	 15% 66% 26% . .

The following table lists non-polymeric compounds, carbohydrate monomers and non-standard residues in protein, DNA, RNA chains that are outliers for geometric or electron-density-fit crite-

ria:

Mol	Type	Chain	Res	Chirality	Geometry	Clashes	Electron density
2	EMC	C	9005	-	-	-	X
2	EMC	C	9006	-	-	-	X
2	EMC	D	9000	-	-	-	X
2	EMC	D	9001	-	-	-	X
2	EMC	D	9002	-	-	-	X
3	EMT	A	9007	-	-	X	X
3	EMT	B	9008	-	-	X	X

2 Entry composition [i](#)

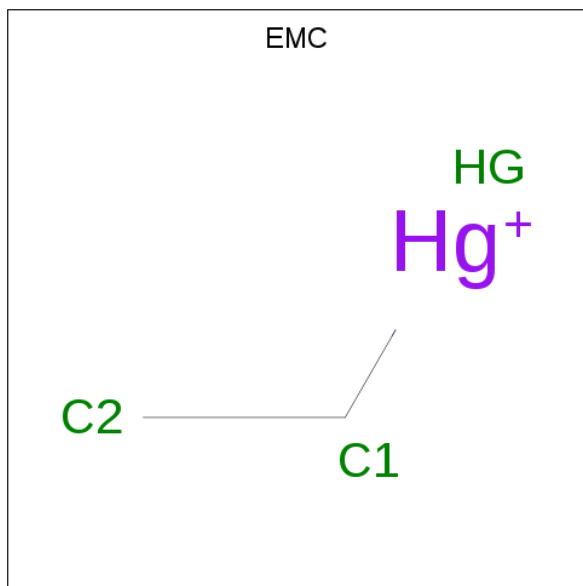
There are 4 unique types of molecules in this entry. The entry contains 14135 atoms, of which 0 are hydrogens and 0 are deuteriums.

In the tables below, the ZeroOcc column contains the number of atoms modelled with zero occupancy, the AltConf column contains the number of residues with at least one atom in alternate conformation and the Trace column contains the number of residues modelled with at most 2 atoms.

- Molecule 1 is a protein called SUCCINYL-COA\;3-KETOACID-COENZYME A TRANSFERASE.

Mol	Chain	Residues	Atoms					ZeroOcc	AltConf	Trace
			Total	C	N	O	S			
1	A	468	Total 3568	C 2264	N 612	O 674	S 18	0	0	0
1	B	425	Total 3239	C 2056	N 554	O 616	S 13	0	0	0
1	C	425	Total 3234	C 2053	N 553	O 614	S 14	0	0	0
1	D	464	Total 3535	C 2244	N 604	O 669	S 18	0	0	0

- Molecule 2 is ETHYL MERCURY ION (three-letter code: EMC) (formula: C₂H₅Hg).



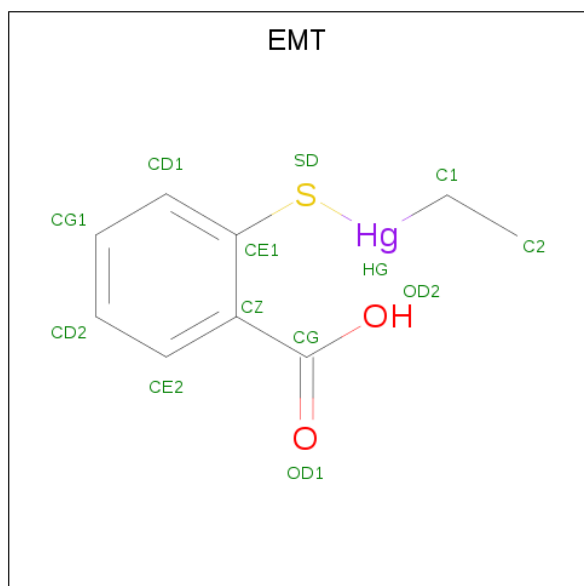
Mol	Chain	Residues	Atoms			ZeroOcc	AltConf
			Total	C	Hg		
2	A	1	Total 3	C 2	Hg 1	0	0
2	B	1	Total 3	C 2	Hg 1	0	0

Continued on next page...

Continued from previous page...

Mol	Chain	Residues	Atoms			ZeroOcc	AltConf
2	C	1	Total	C	Hg	0	0
			3	2	1		
2	C	1	Total	C	Hg	0	0
			3	2	1		
2	D	1	Total	C	Hg	0	0
			3	2	1		
2	D	1	Total	C	Hg	0	0
			3	2	1		
2	D	1	Total	C	Hg	0	0
			3	2	1		

- Molecule 3 is 2-(ETHYLMERCURI-THIO)-BENZOIC ACID (three-letter code: EMT) (formula: $C_9H_{10}HgO_2S$).



Mol	Chain	Residues	Atoms					ZeroOcc	AltConf
3	A	1	Total	C	Hg	O	S	0	0
			13	9	1	2	1		
3	B	1	Total	C	Hg	O	S	0	0
			13	9	1	2	1		

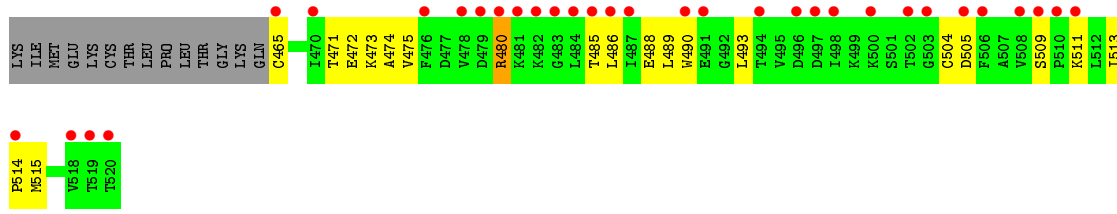
- Molecule 4 is water.

Mol	Chain	Residues	Atoms		ZeroOcc	AltConf
4	A	107	Total	O	0	0
			107	107		
4	B	86	Total	O	0	0
			86	86		

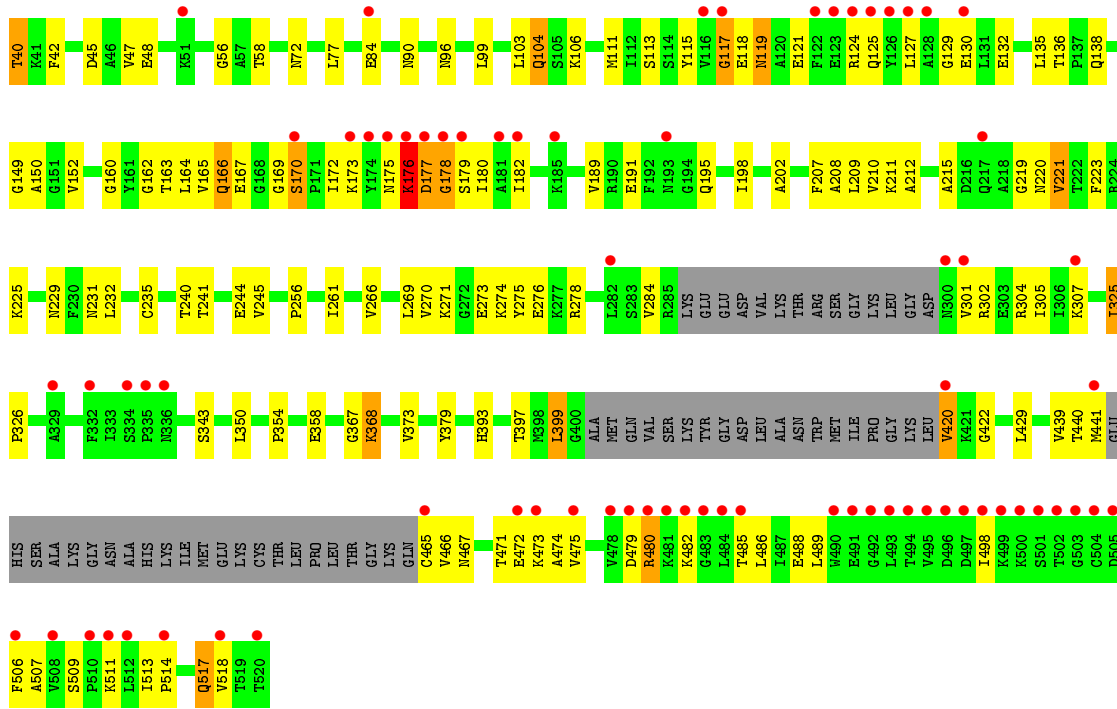
Continued on next page...

Continued from previous page...

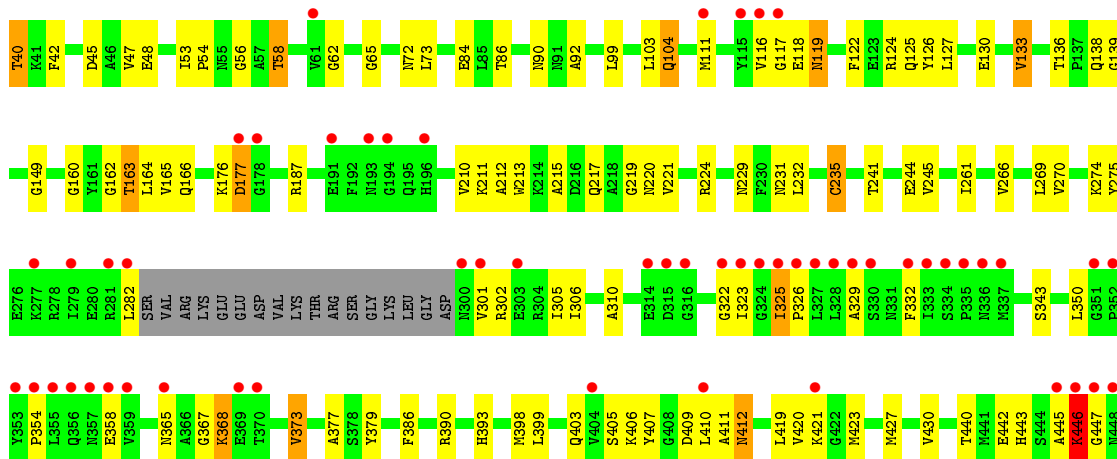
Mol	Chain	Residues	Atoms		ZeroOcc	AltConf
4	C	139	Total 139	O 139	0	0
4	D	180	Total 180	O 180	0	0

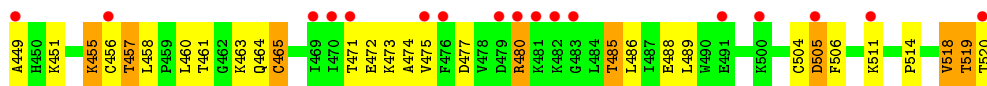


● Molecule 1: SUCCINYL-COA\3-KETOACID-COENZYME A TRANSFERASE



● Molecule 1: SUCCINYL-COA\3-KETOACID-COENZYME A TRANSFERASE





4 Data and refinement statistics

Property	Value	Source
Space group	P 1 21 1	Depositor
Cell constants a, b, c, α , β , γ	74.80Å 133.80Å 101.90Å 90.00° 104.40° 90.00°	Depositor
Resolution (Å)	29.76 – 2.40 29.76 – 2.40	Depositor EDS
% Data completeness (in resolution range)	99.7 (29.76-2.40) 99.8 (29.76-2.40)	Depositor EDS
R_{merge}	(Not available)	Depositor
R_{sym}	0.05	Depositor
$\langle I/\sigma(I) \rangle$ ¹	4.06 (at 2.39Å)	Xtrriage
Refinement program	CNS 1.0	Depositor
R, R_{free}	0.240 , 0.270 0.277 , 0.297	Depositor DCC
R_{free} test set	1506 reflections (1.99%)	wwPDB-VP
Wilson B-factor (Å ²)	36.8	Xtrriage
Anisotropy	0.459	Xtrriage
Bulk solvent k_{sol} (e/Å ³), B_{sol} (Å ²)	0.36 , 69.1	EDS
L-test for twinning ²	$\langle L \rangle = 0.50$, $\langle L^2 \rangle = 0.33$	Xtrriage
Estimated twinning fraction	No twinning to report.	Xtrriage
F_o, F_c correlation	0.89	EDS
Total number of atoms	14135	wwPDB-VP
Average B, all atoms (Å ²)	44.0	wwPDB-VP

Xtrriage's analysis on translational NCS is as follows: *The largest off-origin peak in the Patterson function is 4.08% of the height of the origin peak. No significant pseudotranslation is detected.*

¹Intensities estimated from amplitudes.

²Theoretical values of $\langle |L| \rangle$, $\langle L^2 \rangle$ for acentric reflections are 0.5, 0.333 respectively for untwinned datasets, and 0.375, 0.2 for perfectly twinned datasets.

5 Model quality [i](#)

5.1 Standard geometry [i](#)

Bond lengths and bond angles in the following residue types are not validated in this section: EMT, EMC

The Z score for a bond length (or angle) is the number of standard deviations the observed value is removed from the expected value. A bond length (or angle) with $|Z| > 5$ is considered an outlier worth inspection. RMSZ is the root-mean-square of all Z scores of the bond lengths (or angles).

Mol	Chain	Bond lengths		Bond angles	
		RMSZ	# Z >5	RMSZ	# Z >5
1	A	0.38	0/3626	0.63	0/4894
1	B	0.36	0/3288	0.61	0/4438
1	C	0.40	0/3283	0.64	1/4431 (0.0%)
1	D	0.42	0/3593	0.66	1/4851 (0.0%)
All	All	0.39	0/13790	0.64	2/18614 (0.0%)

There are no bond length outliers.

All (2) bond angle outliers are listed below:

Mol	Chain	Res	Type	Atoms	Z	Observed(°)	Ideal(°)
1	C	465	CYS	CA-CB-SG	6.20	125.17	114.00
1	D	505	ASP	N-CA-C	-5.21	96.93	111.00

There are no chirality outliers.

There are no planarity outliers.

5.2 Too-close contacts [i](#)

In the following table, the Non-H and H(model) columns list the number of non-hydrogen atoms and hydrogen atoms in the chain respectively. The H(added) column lists the number of hydrogen atoms added and optimized by MolProbity. The Clashes column lists the number of clashes within the asymmetric unit, whereas Symm-Clashes lists symmetry related clashes.

Mol	Chain	Non-H	H(model)	H(added)	Clashes	Symm-Clashes
1	A	3568	0	3639	137	0
1	B	3239	0	3296	87	0
1	C	3234	0	3281	119	0
1	D	3535	0	3597	133	0
2	A	3	0	0	0	0

Continued on next page...

Continued from previous page...

Mol	Chain	Non-H	H(model)	H(added)	Clashes	Symm-Clashes
2	B	3	0	0	0	0
2	C	6	0	0	0	0
2	D	9	0	0	1	0
3	A	13	0	4	9	0
3	B	13	0	4	8	0
4	A	107	0	0	6	0
4	B	86	0	0	6	0
4	C	139	0	0	10	0
4	D	180	0	0	5	0
All	All	14135	0	13821	480	0

The all-atom clashscore is defined as the number of clashes found per 1000 atoms (including hydrogen atoms). The all-atom clashscore for this structure is 17.

The worst 5 of 480 close contacts within the same asymmetric unit are listed below, sorted by their clash magnitude.

Atom-1	Atom-2	Interatomic distance (Å)	Clash overlap (Å)
3:B:9008:EMT:HE2	3:B:9008:EMT:CZ	2.07	1.23
3:B:9008:EMT:HE2	3:B:9008:EMT:CD2	2.06	1.23
3:A:9007:EMT:HE2	3:A:9007:EMT:CD2	2.06	1.21
3:A:9007:EMT:HE2	3:A:9007:EMT:CZ	2.06	1.21
1:B:163:THR:HG22	1:B:165:VAL:H	1.13	1.10

There are no symmetry-related clashes.

5.3 Torsion angles [i](#)

5.3.1 Protein backbone [i](#)

In the following table, the Percentiles column shows the percent Ramachandran outliers of the chain as a percentile score with respect to all X-ray entries followed by that with respect to entries of similar resolution.

The Analysed column shows the number of residues for which the backbone conformation was analysed, and the total number of residues.

Mol	Chain	Analysed	Favoured	Allowed	Outliers	Percentiles
1	A	464/481 (96%)	438 (94%)	18 (4%)	8 (2%)	9 11
1	B	417/481 (87%)	397 (95%)	16 (4%)	4 (1%)	15 23

Continued on next page...

Continued from previous page...

Mol	Chain	Analysed	Favoured	Allowed	Outliers	Percentiles	
1	C	417/481 (87%)	397 (95%)	13 (3%)	7 (2%)	9	11
1	D	460/481 (96%)	438 (95%)	18 (4%)	4 (1%)	17	25
All	All	1758/1924 (91%)	1670 (95%)	65 (4%)	23 (1%)	12	17

5 of 23 Ramachandran outliers are listed below:

Mol	Chain	Res	Type
1	A	413	TRP
1	A	416	PRO
1	A	519	THR
1	B	177	ASP
1	C	177	ASP

5.3.2 Protein sidechains [i](#)

In the following table, the Percentiles column shows the percent sidechain outliers of the chain as a percentile score with respect to all X-ray entries followed by that with respect to entries of similar resolution.

The Analysed column shows the number of residues for which the sidechain conformation was analysed, and the total number of residues.

Mol	Chain	Analysed	Rotameric	Outliers	Percentiles	
1	A	382/393 (97%)	363 (95%)	19 (5%)	24	40
1	B	347/393 (88%)	331 (95%)	16 (5%)	27	43
1	C	345/393 (88%)	327 (95%)	18 (5%)	23	38
1	D	378/393 (96%)	354 (94%)	24 (6%)	18	28
All	All	1452/1572 (92%)	1375 (95%)	77 (5%)	22	37

5 of 77 residues with a non-rotameric sidechain are listed below:

Mol	Chain	Res	Type
1	B	485	THR
1	C	235	CYS
1	D	455	LYS
1	C	40	THR
1	C	136	THR

Some sidechains can be flipped to improve hydrogen bonding and reduce clashes. 5 of 40 such sidechains are listed below:

Mol	Chain	Res	Type
1	C	72	ASN
1	C	138	GLN
1	D	403	GLN
1	C	104	GLN
1	C	166	GLN

5.3.3 RNA [i](#)

There are no RNA molecules in this entry.

5.4 Non-standard residues in protein, DNA, RNA chains [i](#)

There are no non-standard protein/DNA/RNA residues in this entry.

5.5 Carbohydrates [i](#)

There are no carbohydrates in this entry.

5.6 Ligand geometry [i](#)

9 ligands are modelled in this entry.

In the following table, the Counts columns list the number of bonds (or angles) for which Mogul statistics could be retrieved, the number of bonds (or angles) that are observed in the model and the number of bonds (or angles) that are defined in the Chemical Component Dictionary. The Link column lists molecule types, if any, to which the group is linked. The Z score for a bond length (or angle) is the number of standard deviations the observed value is removed from the expected value. A bond length (or angle) with $|Z| > 2$ is considered an outlier worth inspection. RMSZ is the root-mean-square of all Z scores of the bond lengths (or angles).

Mol	Type	Chain	Res	Link	Bond lengths			Bond angles		
					Counts	RMSZ	# Z > 2	Counts	RMSZ	# Z > 2
2	EMC	C	9005	1,4	1,2,2	1.54	0	-		
3	EMT	A	9007	-	10,13,13	2.14	2 (20%)	9,16,16	0.95	1 (11%)
2	EMC	C	9006	1	1,2,2	0.52	0	-		
2	EMC	D	9002	1	1,2,2	0.42	0	-		
2	EMC	A	9003	1	1,2,2	0.38	0	-		
2	EMC	D	9001	1	1,2,2	3.63	1 (100%)	-		
2	EMC	B	9004	1	1,2,2	0.49	0	-		
3	EMT	B	9008	-	10,13,13	2.40	1 (10%)	9,16,16	0.65	0
2	EMC	D	9000	1	1,2,2	0.55	0	-		

In the following table, the Chirals column lists the number of chiral outliers, the number of chiral centers analysed, the number of these observed in the model and the number defined in the Chemical Component Dictionary. Similar counts are reported in the Torsion and Rings columns. '-' means no outliers of that kind were identified.

Mol	Type	Chain	Res	Link	Chirals	Torsions	Rings
3	EMT	A	9007	-	-	0/0/8/8	0/1/1/1
3	EMT	B	9008	-	-	0/0/8/8	0/1/1/1

All (4) bond length outliers are listed below:

Mol	Chain	Res	Type	Atoms	Z	Observed(Å)	Ideal(Å)
3	B	9008	EMT	CZ-CG	7.22	1.54	1.47
3	A	9007	EMT	CZ-CG	6.17	1.53	1.47
2	D	9001	EMC	C2-C1	-3.63	1.30	1.49
3	A	9007	EMT	CE1-SD	2.14	1.82	1.78

All (1) bond angle outliers are listed below:

Mol	Chain	Res	Type	Atoms	Z	Observed(°)	Ideal(°)
3	A	9007	EMT	CZ-CE1-SD	-2.33	120.34	124.18

There are no chirality outliers.

There are no torsion outliers.

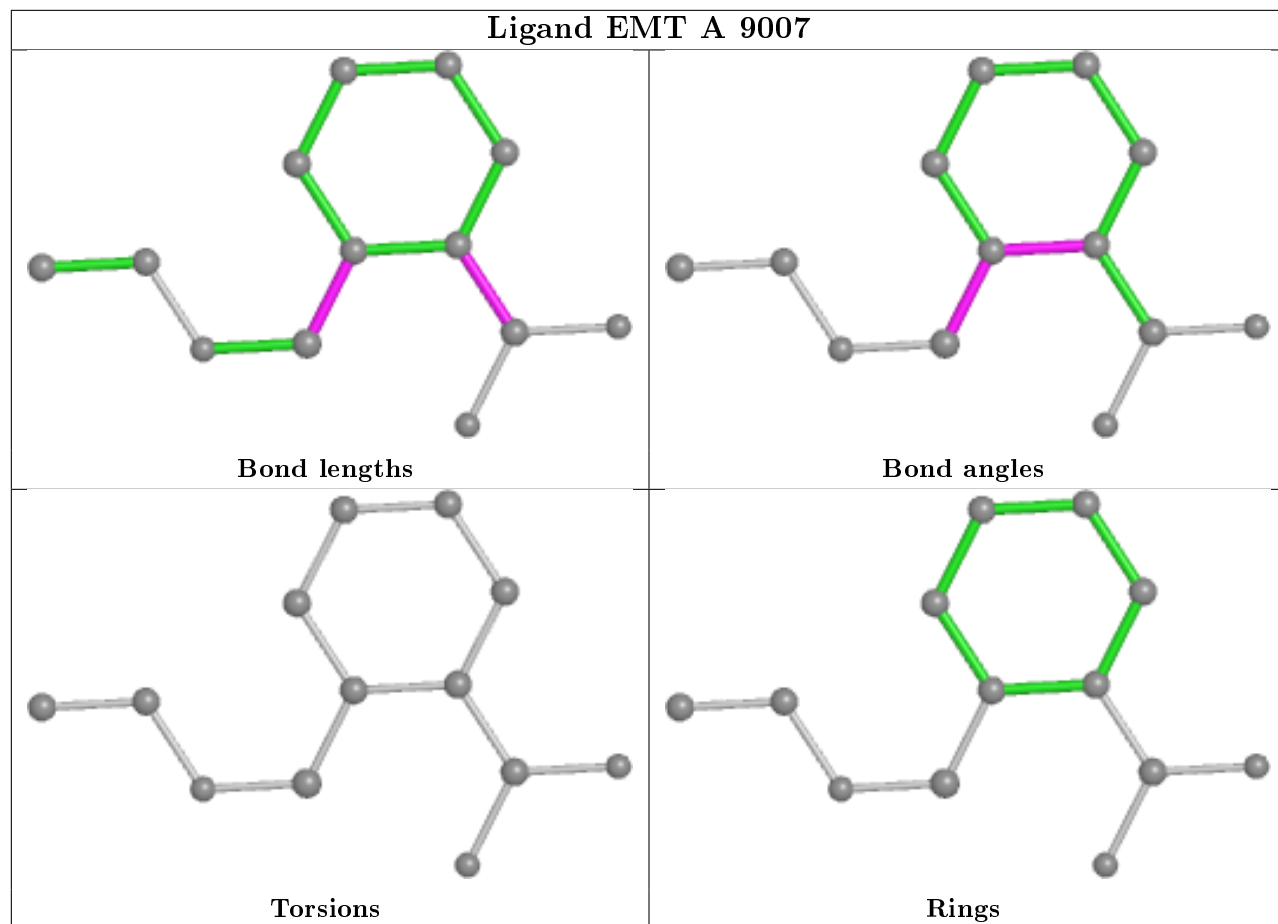
There are no ring outliers.

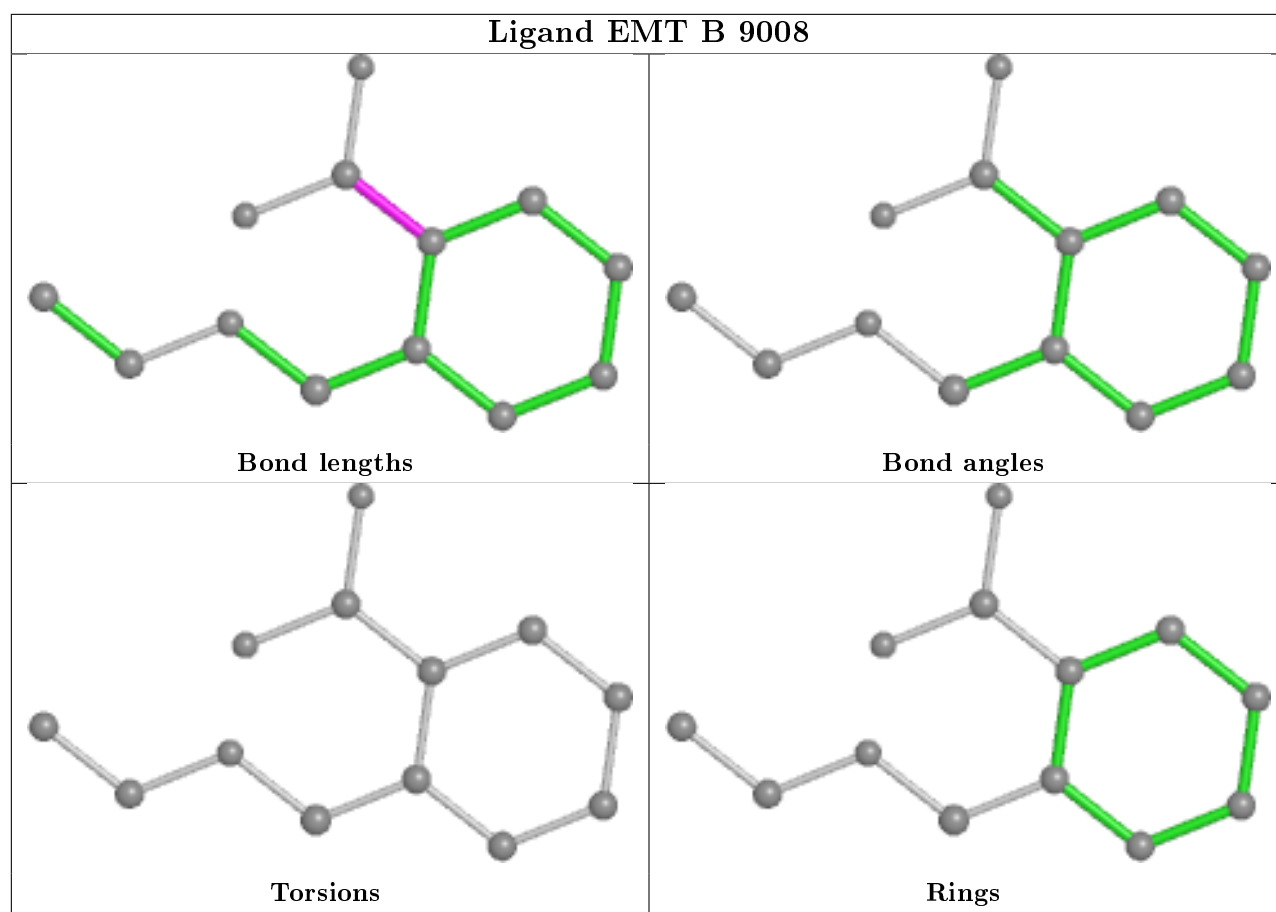
3 monomers are involved in 18 short contacts:

Mol	Chain	Res	Type	Clashes	Symm-Clashes
3	A	9007	EMT	9	0
3	B	9008	EMT	8	0
2	D	9000	EMC	1	0

The following is a two-dimensional graphical depiction of Mogul quality analysis of bond lengths, bond angles, torsion angles, and ring geometry for all instances of the Ligand of Interest. In addition, ligands with molecular weight > 250 and outliers as shown on the validation Tables will also be included. For torsion angles, if less than 5% of the Mogul distribution of torsion angles is within 10 degrees of the torsion angle in question, then that torsion angle is considered an outlier. Any bond that is central to one or more torsion angles identified as an outlier by Mogul will be highlighted in the graph. For rings, the root-mean-square deviation (RMSD) between the ring in question and similar rings identified by Mogul is calculated over all ring torsion angles. If the average RMSD is greater than 60 degrees and the minimal RMSD between the ring in question and any Mogul-identified rings is also greater than 60 degrees, then that ring is considered an outlier. The outliers are highlighted in purple. The color gray indicates Mogul did not find sufficient

equivalents in the CSD to analyse the geometry.





5.7 Other polymers [i](#)

There are no such residues in this entry.

5.8 Polymer linkage issues [i](#)

There are no chain breaks in this entry.

6 Fit of model and data [i](#)

6.1 Protein, DNA and RNA chains [i](#)

In the following table, the column labelled ‘#RSRZ> 2’ contains the number (and percentage) of RSRZ outliers, followed by percent RSRZ outliers for the chain as percentile scores relative to all X-ray entries and entries of similar resolution. The OWAB column contains the minimum, median, 95th percentile and maximum values of the occupancy-weighted average B-factor per residue. The column labelled ‘Q< 0.9’ lists the number of (and percentage) of residues with an average occupancy less than 0.9.

Mol	Chain	Analysed	<RSRZ>	#RSRZ>2	OWAB(Å ²)	Q<0.9
1	A	468/481 (97%)	1.14	91 (19%) 1 0	23, 41, 73, 83	0
1	B	425/481 (88%)	1.10	77 (18%) 1 1	24, 44, 76, 82	0
1	C	425/481 (88%)	1.04	72 (16%) 1 1	19, 40, 77, 86	0
1	D	464/481 (96%)	1.01	72 (15%) 2 1	18, 36, 62, 80	0
All	All	1782/1924 (92%)	1.07	312 (17%) 1 1	18, 40, 75, 86	0

The worst 5 of 312 RSRZ outliers are listed below:

Mol	Chain	Res	Type	RSRZ
1	A	520	THR	13.3
1	A	510	PRO	8.2
1	B	481	LYS	8.0
1	A	419	LEU	7.7
1	C	480	ARG	7.6

6.2 Non-standard residues in protein, DNA, RNA chains [i](#)

There are no non-standard protein/DNA/RNA residues in this entry.

6.3 Carbohydrates [i](#)

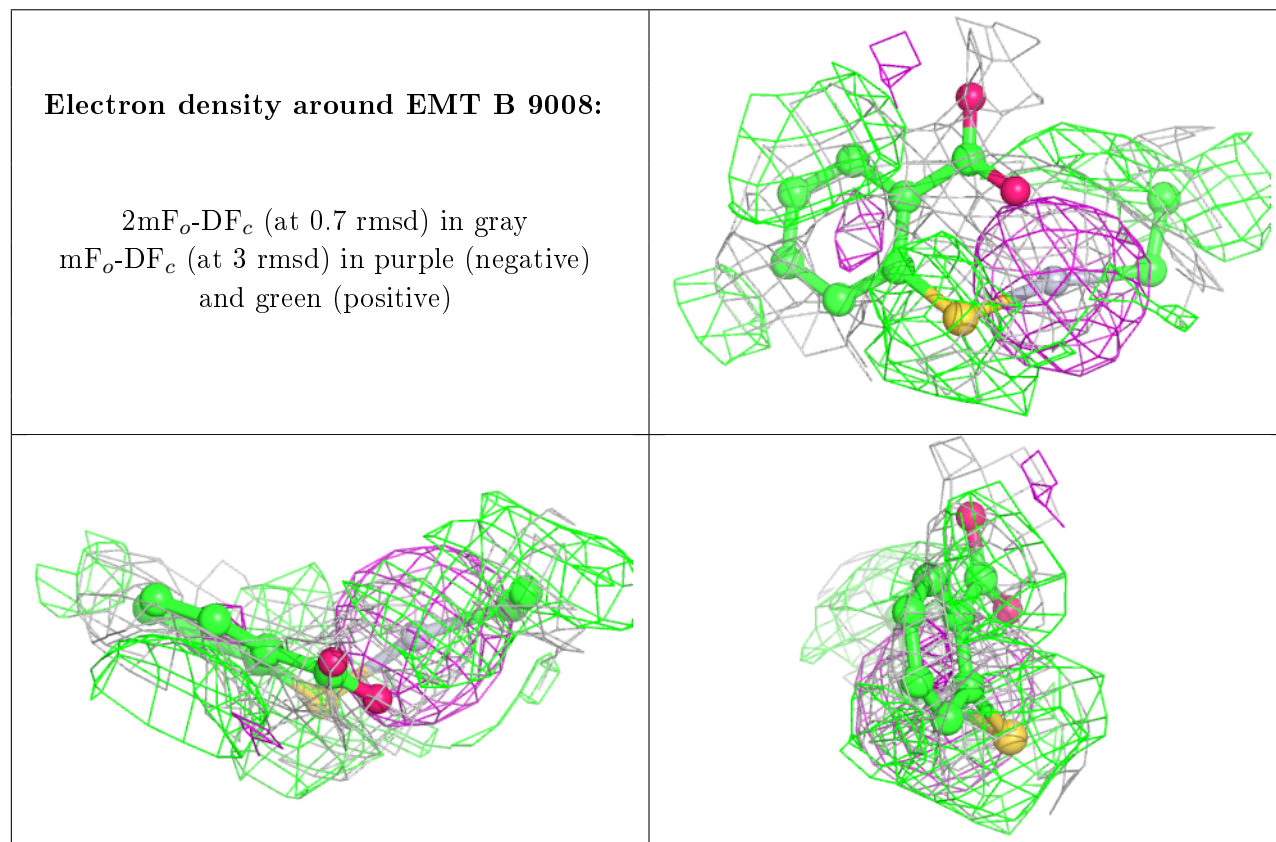
There are no carbohydrates in this entry.

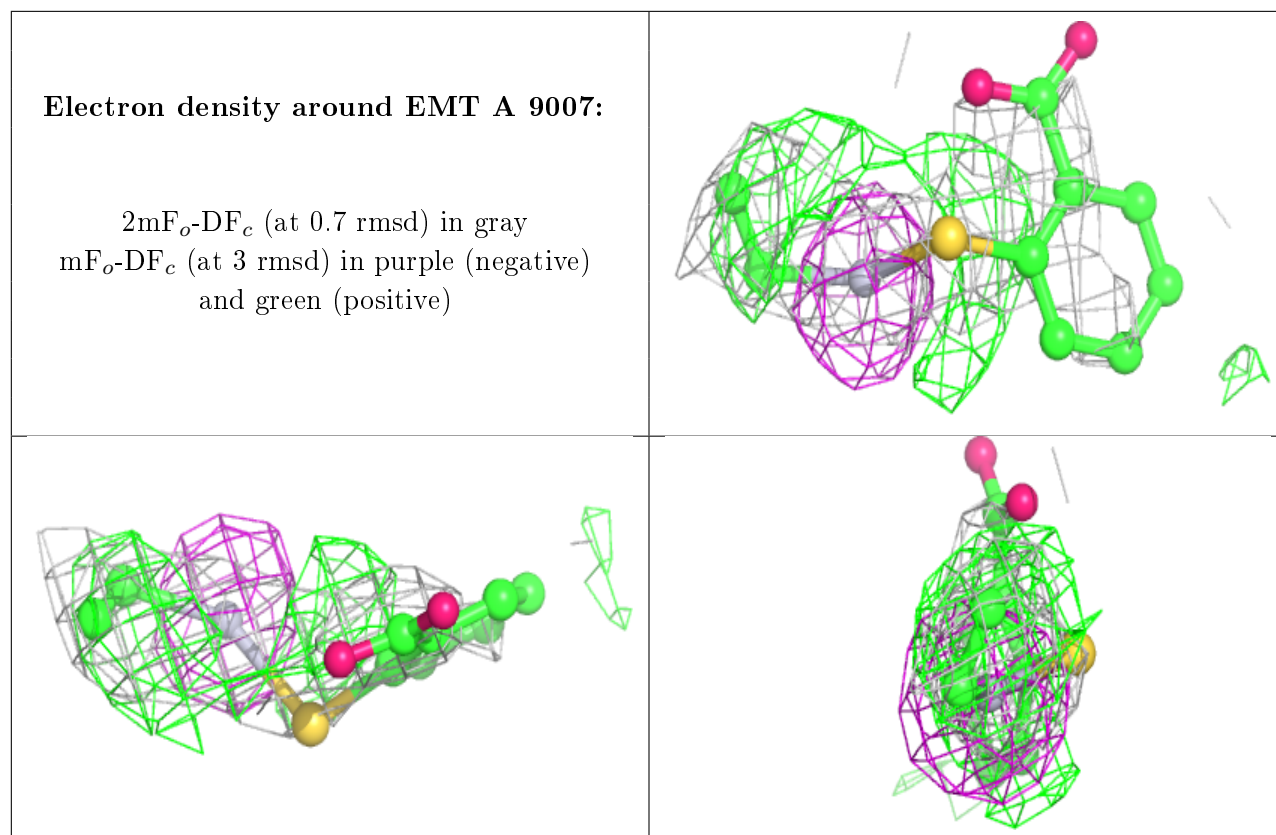
6.4 Ligands [i](#)

In the following table, the Atoms column lists the number of modelled atoms in the group and the number defined in the chemical component dictionary. The B-factors column lists the minimum, median, 95th percentile and maximum values of B factors of atoms in the group. The column labelled ‘Q< 0.9’ lists the number of atoms with occupancy less than 0.9.

Mol	Type	Chain	Res	Atoms	RSCC	RSR	B-factors(\AA^2)	Q<0.9
2	EMC	D	9001	3/3	-0.05	0.71	2,2,2,11	3
3	EMT	B	9008	13/13	0.28	0.61	32,41,45,47	13
2	EMC	C	9006	3/3	0.54	0.50	65,65,65,69	3
3	EMT	A	9007	13/13	0.58	0.65	5,11,12,13	13
2	EMC	C	9005	3/3	0.65	0.58	2,2,2,5	3
2	EMC	D	9000	3/3	0.67	0.59	46,46,47,48	3
2	EMC	D	9002	3/3	0.78	0.70	25,25,25,27	3
2	EMC	A	9003	3/3	0.82	0.66	23,23,23,25	3
2	EMC	B	9004	3/3	0.82	0.60	42,42,44,45	3

The following is a graphical depiction of the model fit to experimental electron density of all instances of the Ligand of Interest. In addition, ligands with molecular weight > 250 and outliers as shown on the geometry validation Tables will also be included. Each fit is shown from different orientation to approximate a three-dimensional view.





6.5 Other polymers [i](#)

There are no such residues in this entry.