



## wwPDB EM Validation Summary Report ⓘ

Nov 21, 2021 – 05:04 am GMT

PDB ID : 7OA6  
EMDB ID : EMD-12766  
Title : Pseudo-atomic model for Hsp26 residues 63 to 214. Please be advised that the target map is not of sufficient resolution to unambiguously position backbone or side chain atoms. This model represents a likely fit.  
Authors : Muehlhofer, M.; Peters, C.; Kriehuber, T.; Kreuzeder, M.; Kazman, P.; Rodina, N.; Reif, B.; Haslbeck, M.; Weinkauff, S.; Buchner, J.  
Deposited on : 2021-04-19  
Resolution : 7.80 Å(reported)

This is a wwPDB EM Validation Summary Report for a publicly released PDB entry.

We welcome your comments at [validation@mail.wwpdb.org](mailto:validation@mail.wwpdb.org)

A user guide is available at

<https://www.wwpdb.org/validation/2017/EMValidationReportHelp>

with specific help available everywhere you see the ⓘ symbol.

---

The following versions of software and data (see [references ⓘ](#)) were used in the production of this report:

EMDB validation analysis : 0.0.0.dev97  
MolProbity : 4.02b-467  
Percentile statistics : 20191225.v01 (using entries in the PDB archive December 25th 2019)  
Ideal geometry (proteins) : Engh & Huber (2001)  
Ideal geometry (DNA, RNA) : Parkinson et al. (1996)  
Validation Pipeline (wwPDB-VP) : 2.23.2

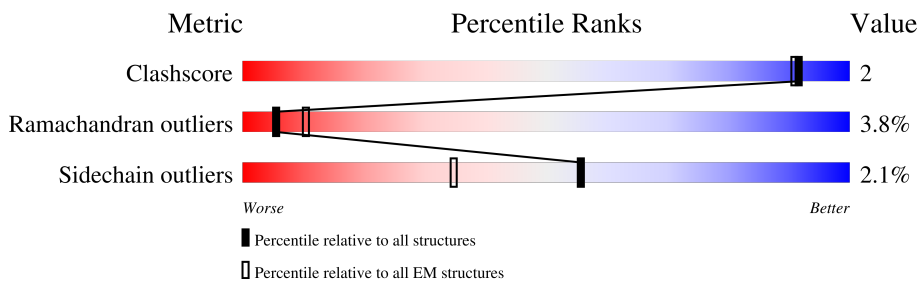
# 1 Overall quality at a glance

The following experimental techniques were used to determine the structure:

*ELECTRON MICROSCOPY*

The reported resolution of this entry is 7.80 Å.

Percentile scores (ranging between 0-100) for global validation metrics of the entry are shown in the following graphic. The table shows the number of entries on which the scores are based.



Metric	Whole archive (#Entries)	EM structures (#Entries)
Clashscore	158937	4297
Ramachandran outliers	154571	4023
Sidechain outliers	154315	3826

The table below summarises the geometric issues observed across the polymeric chains and their fit to the map. The red, orange, yellow and green segments of the bar indicate the fraction of residues that contain outliers for  $\geq 3$ , 2, 1 and 0 types of geometric quality criteria respectively. A grey segment represents the fraction of residues that are not modelled. The numeric value for each fraction is indicated below the corresponding segment, with a dot representing fractions  $\leq 5\%$ . The upper red bar (where present) indicates the fraction of residues that have poor fit to the EM map (all-atom inclusion  $< 40\%$ ). The numeric value is given above the bar.

Mol	Chain	Length	Quality of chain
1	A	214	 5% 66% 5% 29%
1	B	214	 5% 66% 29%
1	I	214	 15% 68% 1% 29%
1	J	214	 8% 50% 1% 46%
1	X	214	 6% 93% 1% 1%

## 2 Entry composition

There is only 1 type of molecule in this entry. The entry contains 4628 atoms, of which 0 are hydrogens and 0 are deuteriums.

In the tables below, the AltConf column contains the number of residues with at least one atom in alternate conformation and the Trace column contains the number of residues modelled with at most 2 atoms.

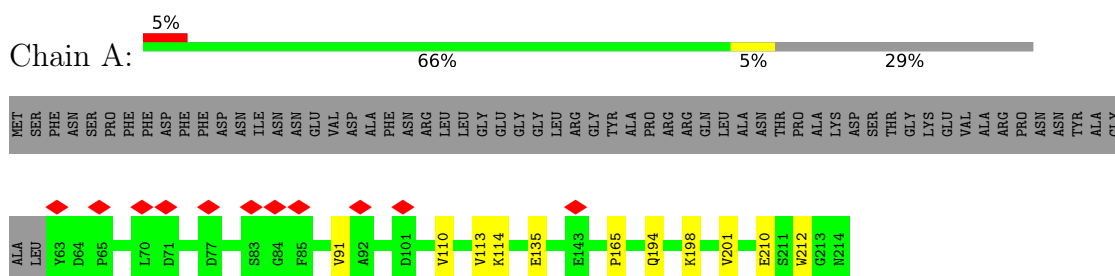
- Molecule 1 is a protein called Heat shock protein 26.

Mol	Chain	Residues	Atoms				AltConf	Trace
1	A	152	Total	C	N	O	0	0
			1205	762	201	242		
1	B	152	Total	C	N	O	0	0
			1205	762	201	242		
1	I	152	Total	C	N	O	0	0
			1205	762	201	242		
1	J	116	Total	C	N	O	0	0
			901	574	149	178		
1	X	14	Total	C	N	O	0	0
			112	69	19	24		

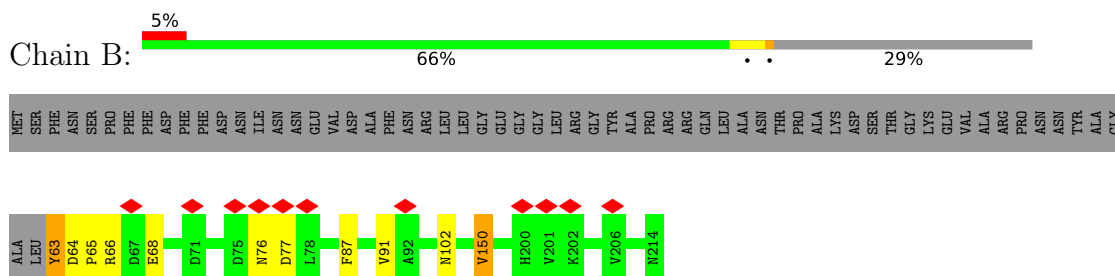
### 3 Residue-property plots [i](#)

These plots are drawn for all protein, RNA, DNA and oligosaccharide chains in the entry. The first graphic for a chain summarises the proportions of the various outlier classes displayed in the second graphic. The second graphic shows the sequence view annotated by issues in geometry and atom inclusion in map density. Residues are color-coded according to the number of geometric quality criteria for which they contain at least one outlier: green = 0, yellow = 1, orange = 2 and red = 3 or more. A red diamond above a residue indicates a poor fit to the EM map for this residue (all-atom inclusion < 40%). Stretches of 2 or more consecutive residues without any outlier are shown as a green connector. Residues present in the sample, but not in the model, are shown in grey.

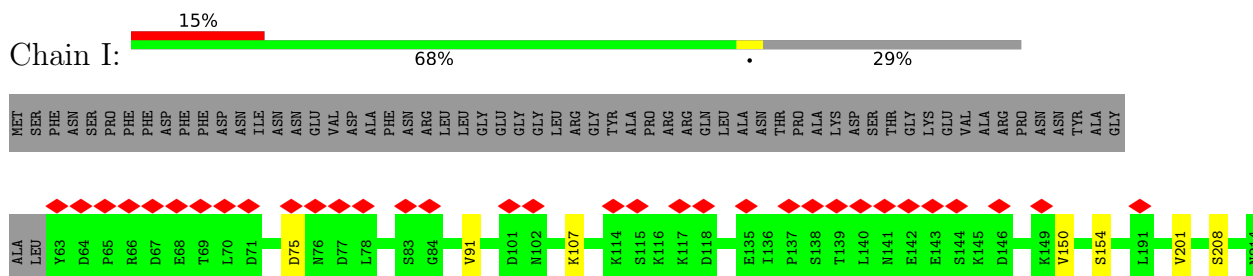
- Molecule 1: Heat shock protein 26



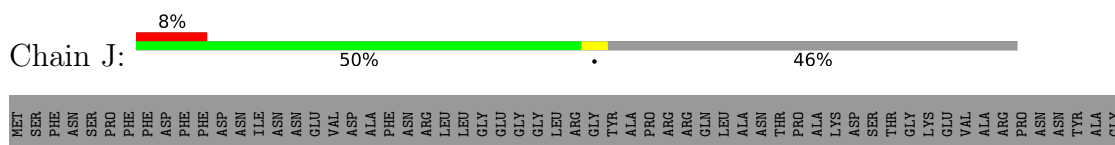
- Molecule 1: Heat shock protein 26



- Molecule 1: Heat shock protein 26



- Molecule 1: Heat shock protein 26





SER  
GLN  
GLU  
SER  
TRP  
GLY  
ASN

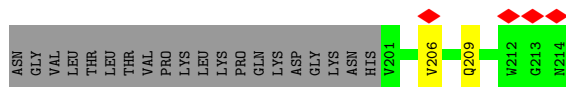
• Molecule 1: Heat shock protein 26



MET  
SER  
PHE  
ASN  
SER  
PRO  
ARG  
PHE  
PHE  
ASP  
PHE  
PHE  
ASP  
ASP  
ASN  
ILE  
ASN  
ASN  
ASN  
GLU  
VAL  
VAL  
ALA  
PHE  
PHE  
PRO  
SER  
GLY  
LEU  
LEU  
GLY  
GLU  
GLY  
LEU  
ARG  
GLY  
TYR  
ALA  
PRO  
VAL  
ARG  
ILE  
ARG  
GLN  
LEU  
ALA  
ASN  
THR  
PRO  
ALA  
LYS  
SER  
THR  
GLY  
LYS  
GLU  
VAL  
VAL  
GLY  
VAL  
VAL  
PRO  
GLY  
VAL  
VAL  
ALA  
GLY  
VAL  
ALA  
LYS  
ARG  
SER  
PRO  
ASN  
LYS  
ASN  
TYR  
ASN  
ILE  
ALA  
GLY

ALA  
LEU  
TYR  
ASP  
ASN  
ARG  
ASP  
GLU  
THR  
PHE  
ASP  
ASP  
ASN  
PHE  
ILE  
ASN  
ASN  
ASN  
GLU  
VAL  
VAL  
SER  
SER  
LEU  
PHE  
GLY  
PHE  
PHE  
PRO  
SER  
GLY  
LEU  
LEU  
GLY  
GLU  
GLY  
LEU  
ARG  
GLY  
TYR  
ALA  
PRO  
VAL  
ARG  
ILE  
ARG  
GLN  
LEU  
ALA  
ASN  
THR  
PRO  
ALA  
LYS  
SER  
THR  
GLY  
LYS  
GLU  
VAL  
VAL  
PRO  
GLY  
VAL  
VAL  
ALA  
GLY  
VAL  
ALA  
LYS  
ARG  
SER  
PRO  
ASN  
LYS  
ASN  
TYR  
ASN  
ILE  
ALA  
GLY

ILE  
GLU  
TYR  
HIS  
GLN  
ASN  
LYS  
ASN  
ASN  
GLN  
LEU  
ILE  
LEU  
VAL  
VAL  
SER  
GLY  
GLU  
GLU  
ILE  
PRO  
SER  
THR  
LEU  
ASN  
ASN  
GLU  
GLU  
SER  
LYS  
ASP  
LYS  
VAL  
VAL  
VAL  
LYS  
GLU  
SER  
SER  
SER  
GLY  
LYS  
PHE  
LYS  
VAL  
ILE  
THR  
LEU  
PRO  
ASP  
TYR  
PRO  
GLY  
VAL  
VAL  
ASP  
ALA  
ASP  
ASN  
ASN  
ILE  
LYS  
ALA  
ASP  
TYR  
ALA



## 4 Experimental information

Property	Value	Source
EM reconstruction method	SINGLE PARTICLE	Depositor
Imposed symmetry	POINT, C4	Depositor
Number of particles used	375385	Depositor
Resolution determination method	FSC 0.143 CUT-OFF	Depositor
CTF correction method	PHASE FLIPPING AND AMPLITUDE CORRECTION	Depositor
Microscope	FEI TITAN KRIOS	Depositor
Voltage (kV)	300	Depositor
Electron dose ( $e^-/\text{\AA}^2$ )	45	Depositor
Minimum defocus (nm)	600	Depositor
Maximum defocus (nm)	2800	Depositor
Magnification	105000	Depositor
Image detector	GATAN K2 SUMMIT (4k x 4k)	Depositor
Maximum map value	1.627	Depositor
Minimum map value	-1.208	Depositor
Average map value	-0.001	Depositor
Map value standard deviation	0.077	Depositor
Recommended contour level	0.31	Depositor
Map size (Å)	383.04, 383.04, 383.04	wwPDB
Map dimensions	288, 288, 288	wwPDB
Map angles (°)	90.0, 90.0, 90.0	wwPDB
Pixel spacing (Å)	1.33, 1.33, 1.33	Depositor

## 5 Model quality [i](#)

### 5.1 Standard geometry [i](#)

The Z score for a bond length (or angle) is the number of standard deviations the observed value is removed from the expected value. A bond length (or angle) with  $|Z| > 5$  is considered an outlier worth inspection. RMSZ is the root-mean-square of all Z scores of the bond lengths (or angles).

Mol	Chain	Bond lengths		Bond angles	
		RMSZ	# Z  >5	RMSZ	# Z  >5
1	A	0.88	0/1231	0.98	0/1667
1	B	0.86	0/1231	1.00	0/1667
1	I	0.87	0/1231	0.98	0/1667
1	J	0.87	0/918	0.97	0/1245
1	X	0.87	0/113	0.94	0/149
All	All	0.87	0/4724	0.98	0/6395

There are no bond length outliers.

There are no bond angle outliers.

There are no chirality outliers.

There are no planarity outliers.

### 5.2 Too-close contacts [i](#)

In the following table, the Non-H and H(model) columns list the number of non-hydrogen atoms and hydrogen atoms in the chain respectively. The H(added) column lists the number of hydrogen atoms added and optimized by MolProbity. The Clashes column lists the number of clashes within the asymmetric unit, whereas Symm-Clashes lists symmetry-related clashes.

Mol	Chain	Non-H	H(model)	H(added)	Clashes	Symm-Clashes
1	A	1205	0	1187	1	0
1	B	1205	0	1187	4	0
1	I	1205	0	1187	3	0
1	J	901	0	912	9	0
1	X	112	0	108	0	0
All	All	4628	0	4581	14	0

The all-atom clashscore is defined as the number of clashes found per 1000 atoms (including hydrogen atoms). The all-atom clashscore for this structure is 2.

The worst 5 of 14 close contacts within the same asymmetric unit are listed below, sorted by their clash magnitude.

Atom-1	Atom-2	Interatomic distance (Å)	Clash overlap (Å)
1:B:64:ASP:N	1:B:65:PRO:HD3	1.98	0.79
1:I:150:VAL:HG22	1:J:78:LEU:HD23	1.63	0.79
1:B:63:TYR:C	1:B:65:PRO:HD3	2.22	0.59
1:J:149:LYS:HB3	1:J:149:LYS:NZ	2.18	0.57
1:J:148:VAL:HG12	1:J:149:LYS:NZ	2.20	0.57

There are no symmetry-related clashes.

## 5.3 Torsion angles [i](#)

### 5.3.1 Protein backbone [i](#)

In the following table, the Percentiles column shows the percent Ramachandran outliers of the chain as a percentile score with respect to all PDB entries followed by that with respect to all EM entries.

The Analysed column shows the number of residues for which the backbone conformation was analysed, and the total number of residues.

Mol	Chain	Analysed	Favoured	Allowed	Outliers	Percentiles	
1	A	150/214 (70%)	131 (87%)	13 (9%)	6 (4%)	3	23
1	B	150/214 (70%)	123 (82%)	22 (15%)	5 (3%)	4	26
1	I	150/214 (70%)	123 (82%)	22 (15%)	5 (3%)	4	26
1	J	114/214 (53%)	99 (87%)	11 (10%)	4 (4%)	3	25
1	X	12/214 (6%)	9 (75%)	1 (8%)	2 (17%)	0	3
All	All	576/1070 (54%)	485 (84%)	69 (12%)	22 (4%)	5	24

5 of 22 Ramachandran outliers are listed below:

Mol	Chain	Res	Type
1	B	87	PHE
1	B	150	VAL
1	A	165	PRO
1	A	212	TRP
1	J	79	SER

### 5.3.2 Protein sidechains [i](#)

In the following table, the Percentiles column shows the percent sidechain outliers of the chain as a percentile score with respect to all PDB entries followed by that with respect to all EM



entries.

The Analysed column shows the number of residues for which the sidechain conformation was analysed, and the total number of residues.

Mol	Chain	Analysed	Rotameric	Outliers	Percentiles	
1	A	139/188 (74%)	136 (98%)	3 (2%)	52	71
1	B	139/188 (74%)	135 (97%)	4 (3%)	42	64
1	I	139/188 (74%)	138 (99%)	1 (1%)	84	90
1	J	105/188 (56%)	102 (97%)	3 (3%)	42	64
1	X	13/188 (7%)	13 (100%)	0	100	100
All	All	535/940 (57%)	524 (98%)	11 (2%)	56	72

5 of 11 residues with a non-rotameric sidechain are listed below:

Mol	Chain	Res	Type
1	I	107	LYS
1	J	77	ASP
1	J	149	LYS
1	J	143	GLU
1	B	66	ARG

Sometimes sidechains can be flipped to improve hydrogen bonding and reduce clashes. There are no such sidechains identified.

### 5.3.3 RNA [i](#)

There are no RNA molecules in this entry.

## 5.4 Non-standard residues in protein, DNA, RNA chains [i](#)

There are no non-standard protein/DNA/RNA residues in this entry.

## 5.5 Carbohydrates [i](#)

There are no monosaccharides in this entry.

## 5.6 Ligand geometry [i](#)

There are no ligands in this entry.

## 5.7 Other polymers [i](#)

There are no such residues in this entry.

## 5.8 Polymer linkage issues [i](#)

There are no chain breaks in this entry.

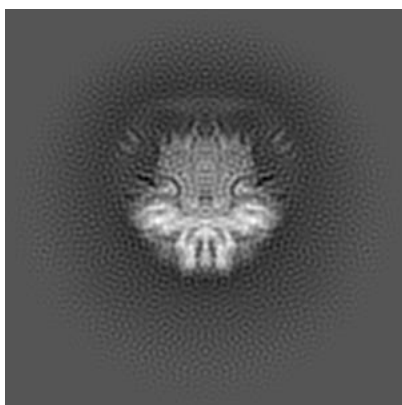
## 6 Map visualisation [i](#)

This section contains visualisations of the EMDB entry EMD-12766. These allow visual inspection of the internal detail of the map and identification of artifacts.

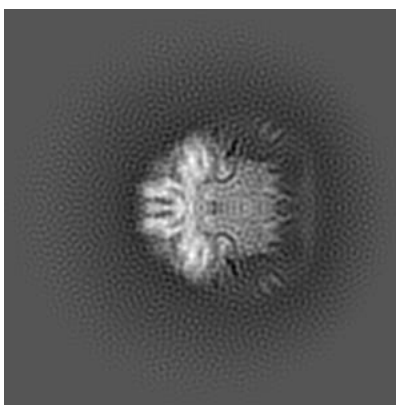
No raw map or half-maps were deposited for this entry and therefore no images, graphs, etc. pertaining to the raw map can be shown.

### 6.1 Orthogonal projections [i](#)

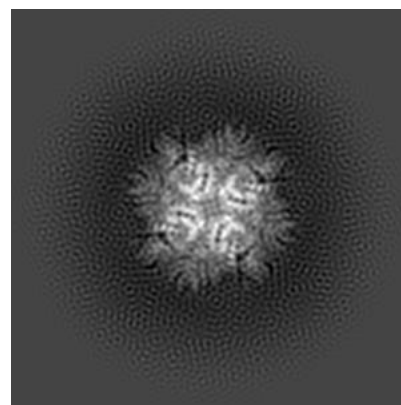
#### 6.1.1 Primary map



X



Y

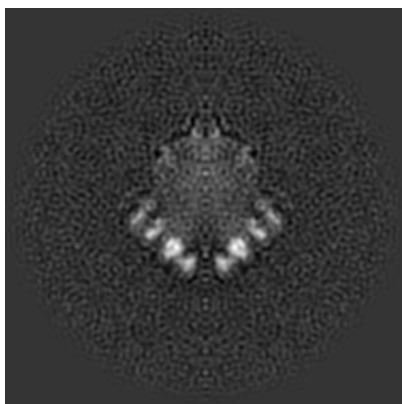


Z

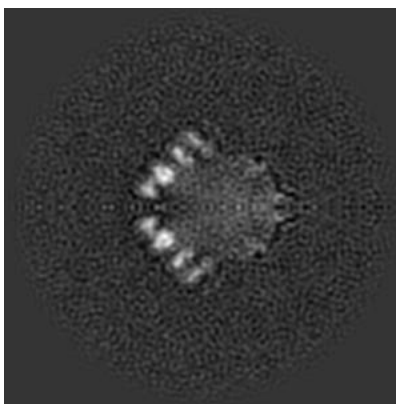
The images above show the map projected in three orthogonal directions.

### 6.2 Central slices [i](#)

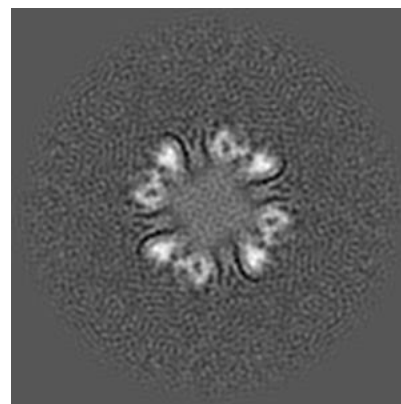
#### 6.2.1 Primary map



X Index: 144



Y Index: 144

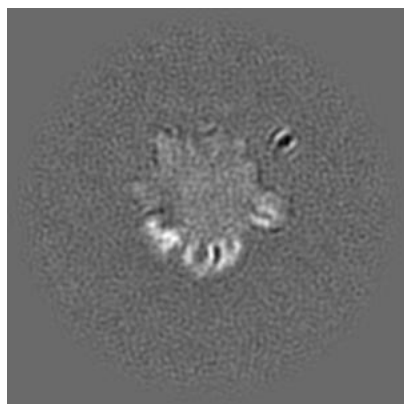


Z Index: 144

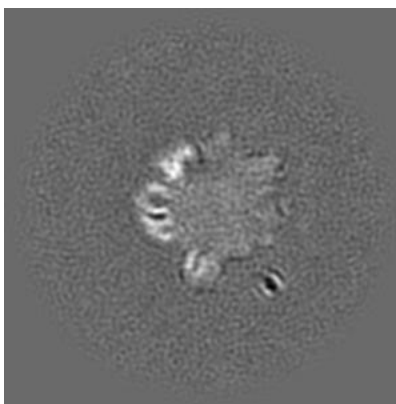
The images above show central slices of the map in three orthogonal directions.

## 6.3 Largest variance slices [i](#)

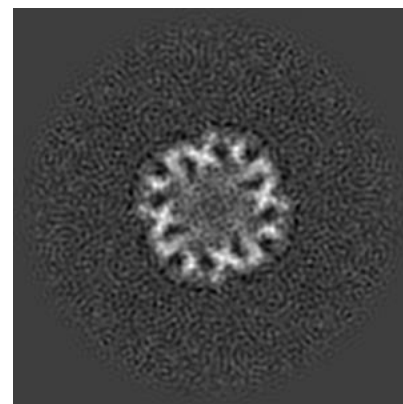
### 6.3.1 Primary map



X Index: 160



Y Index: 160

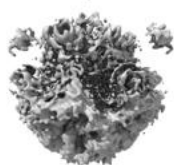


Z Index: 133

The images above show the largest variance slices of the map in three orthogonal directions.

## 6.4 Orthogonal surface views [i](#)

### 6.4.1 Primary map



X



Y



Z

The images above show the 3D surface view of the map at the recommended contour level 0.31. These images, in conjunction with the slice images, may facilitate assessment of whether an appropriate contour level has been provided.

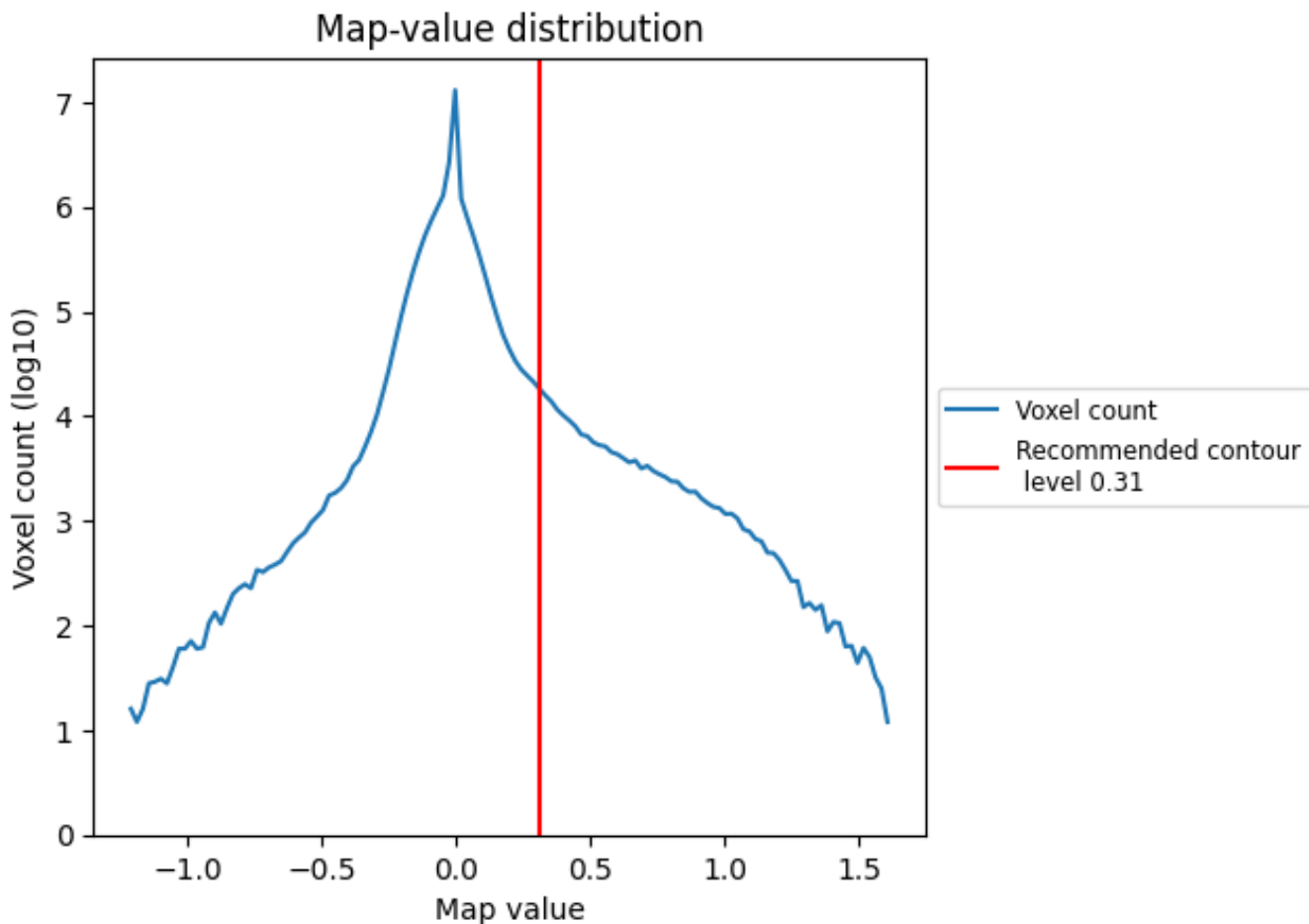
## 6.5 Mask visualisation

This section was not generated. No masks/segmentation were deposited.

## 7 Map analysis [i](#)

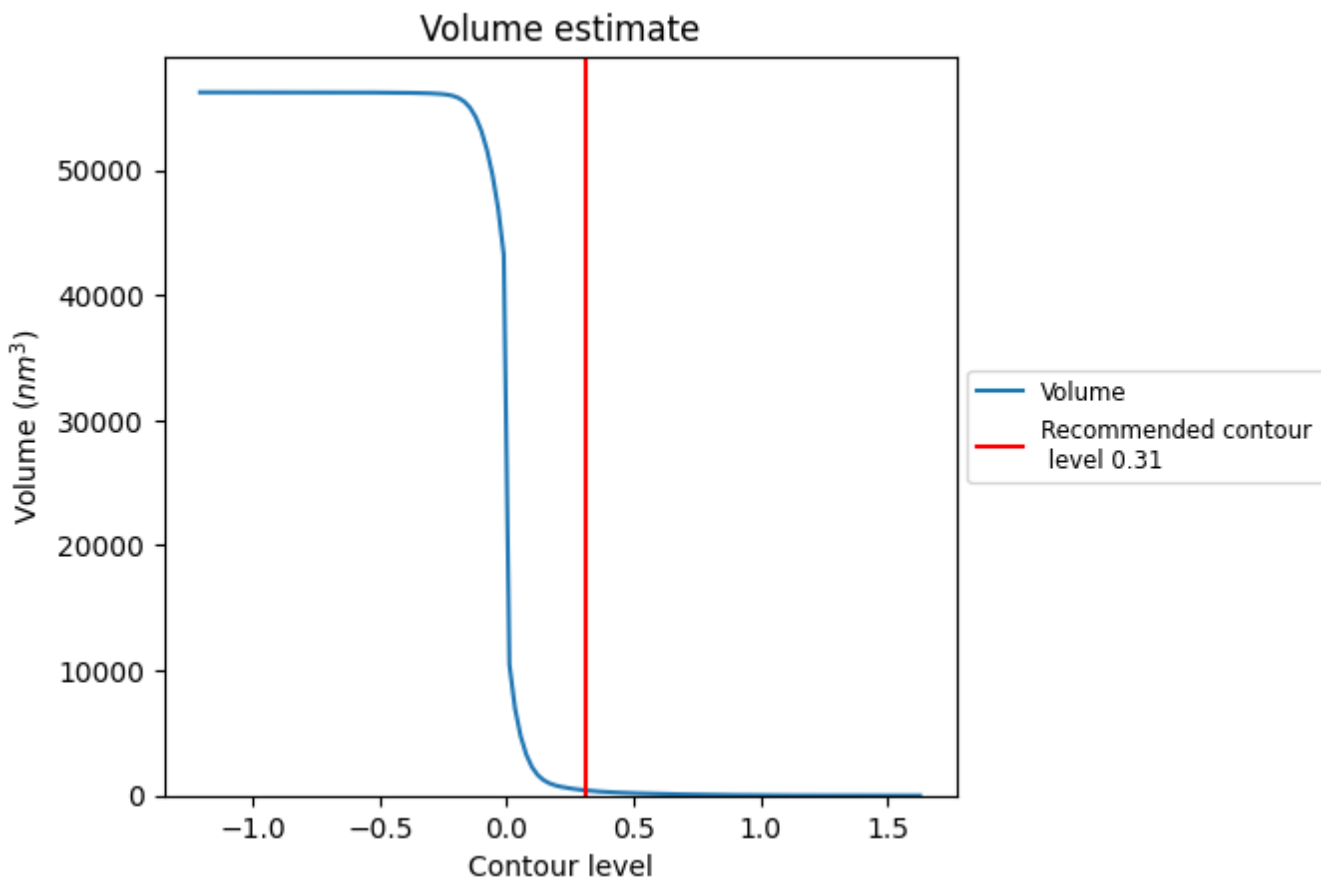
This section contains the results of statistical analysis of the map.

### 7.1 Map-value distribution [i](#)



The map-value distribution is plotted in 128 intervals along the x-axis. The y-axis is logarithmic. A spike in this graph at zero usually indicates that the volume has been masked.

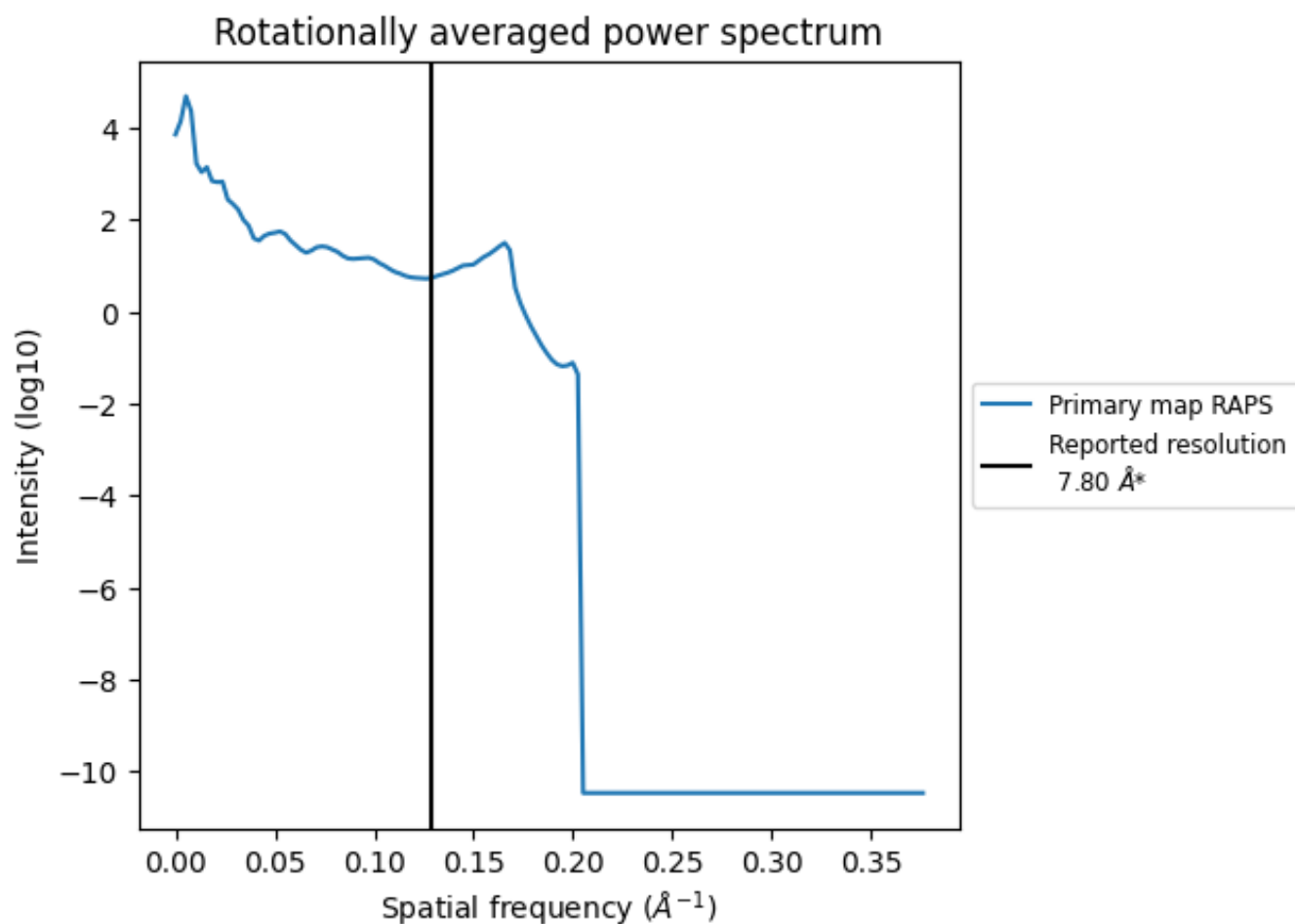
## 7.2 Volume estimate [i](#)



The volume at the recommended contour level is 419  $\text{nm}^3$ ; this corresponds to an approximate mass of 378 kDa.

The volume estimate graph shows how the enclosed volume varies with the contour level. The recommended contour level is shown as a vertical line and the intersection between the line and the curve gives the volume of the enclosed surface at the given level.

### 7.3 Rotationally averaged power spectrum [\(i\)](#)



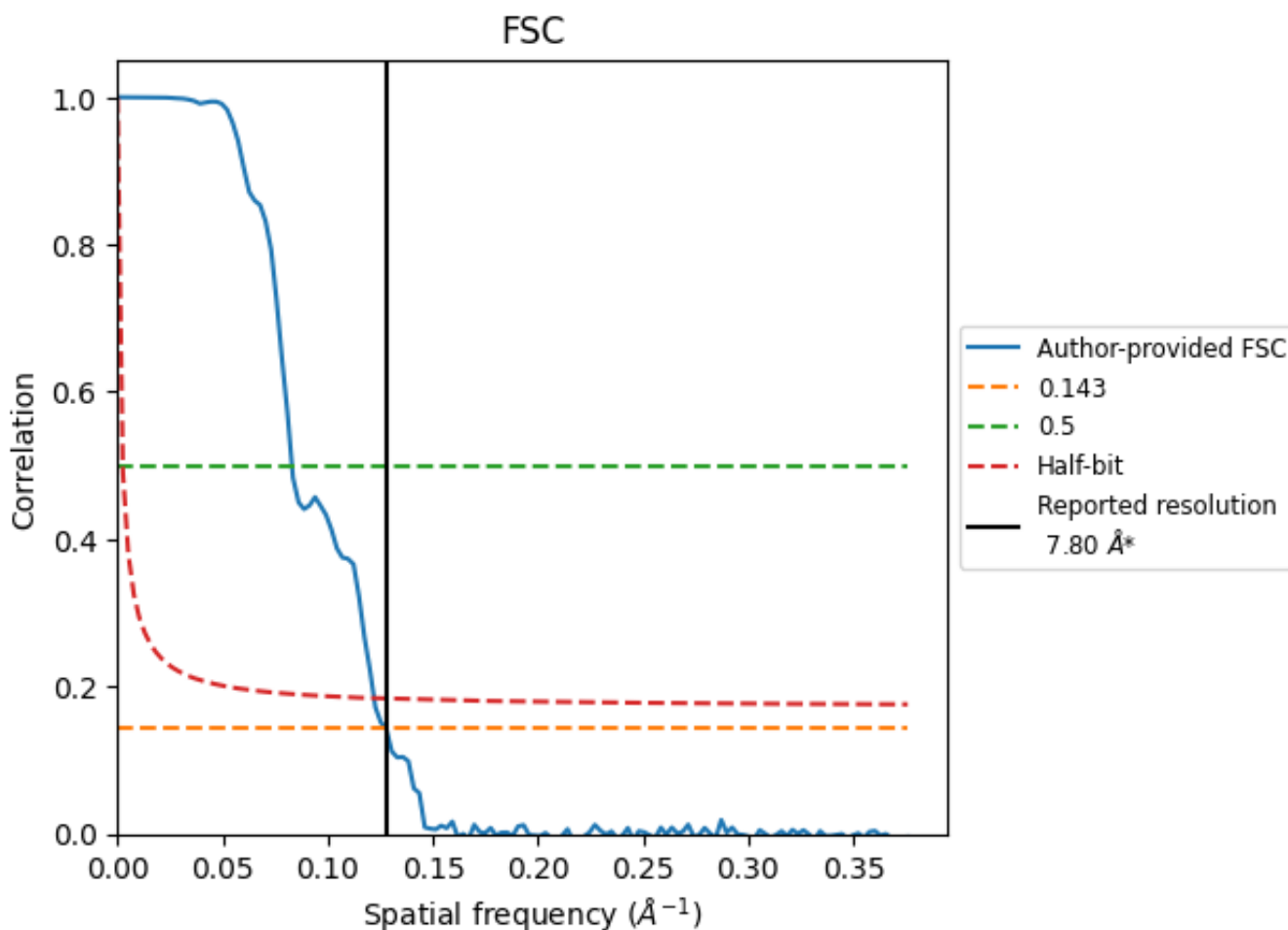
\*Reported resolution corresponds to spatial frequency of 0.128 Å<sup>-1</sup>



## 8 Fourier-Shell correlation [i](#)

Fourier-Shell Correlation (FSC) is the most commonly used method to estimate the resolution of single-particle and subtomogram-averaged maps. The shape of the curve depends on the imposed symmetry, mask and whether or not the two 3D reconstructions used were processed from a common reference. The reported resolution is shown as a black line. A curve is displayed for the half-bit criterion in addition to lines showing the 0.143 gold standard cut-off and 0.5 cut-off.

### 8.1 FSC [i](#)



\*Reported resolution corresponds to spatial frequency of 0.128 Å<sup>-1</sup>

## 8.2 Resolution estimates [i](#)

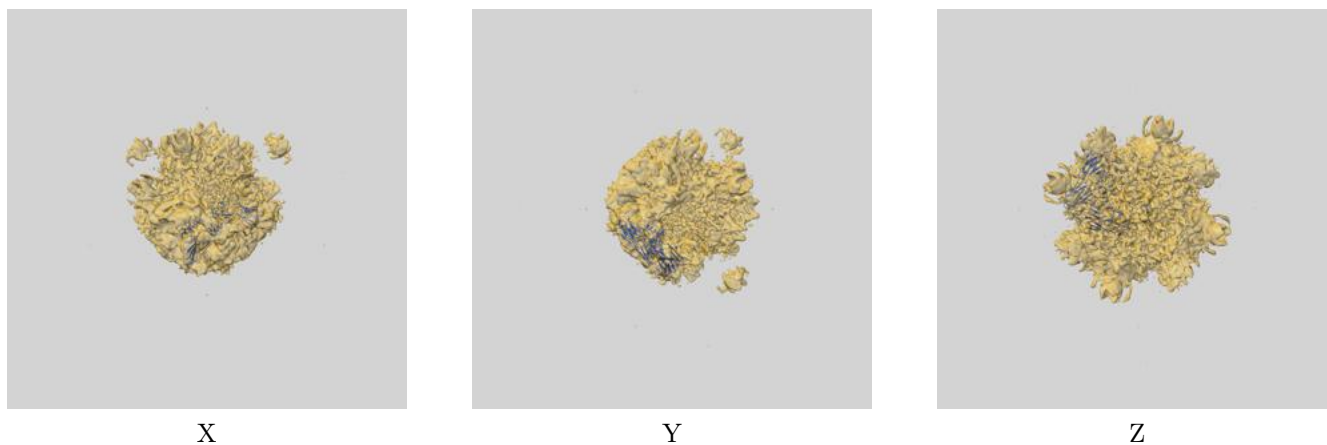
Resolution estimate (Å)	Estimation criterion (FSC cut-off)		
	0.143	0.5	Half-bit
Reported by author	7.80	-	-
Author-provided FSC curve	7.84	12.05	8.19
Unmasked-calculated*	-	-	-

\*Resolution estimate based on FSC curve calculated by comparison of deposited half-maps.

## 9 Map-model fit [i](#)

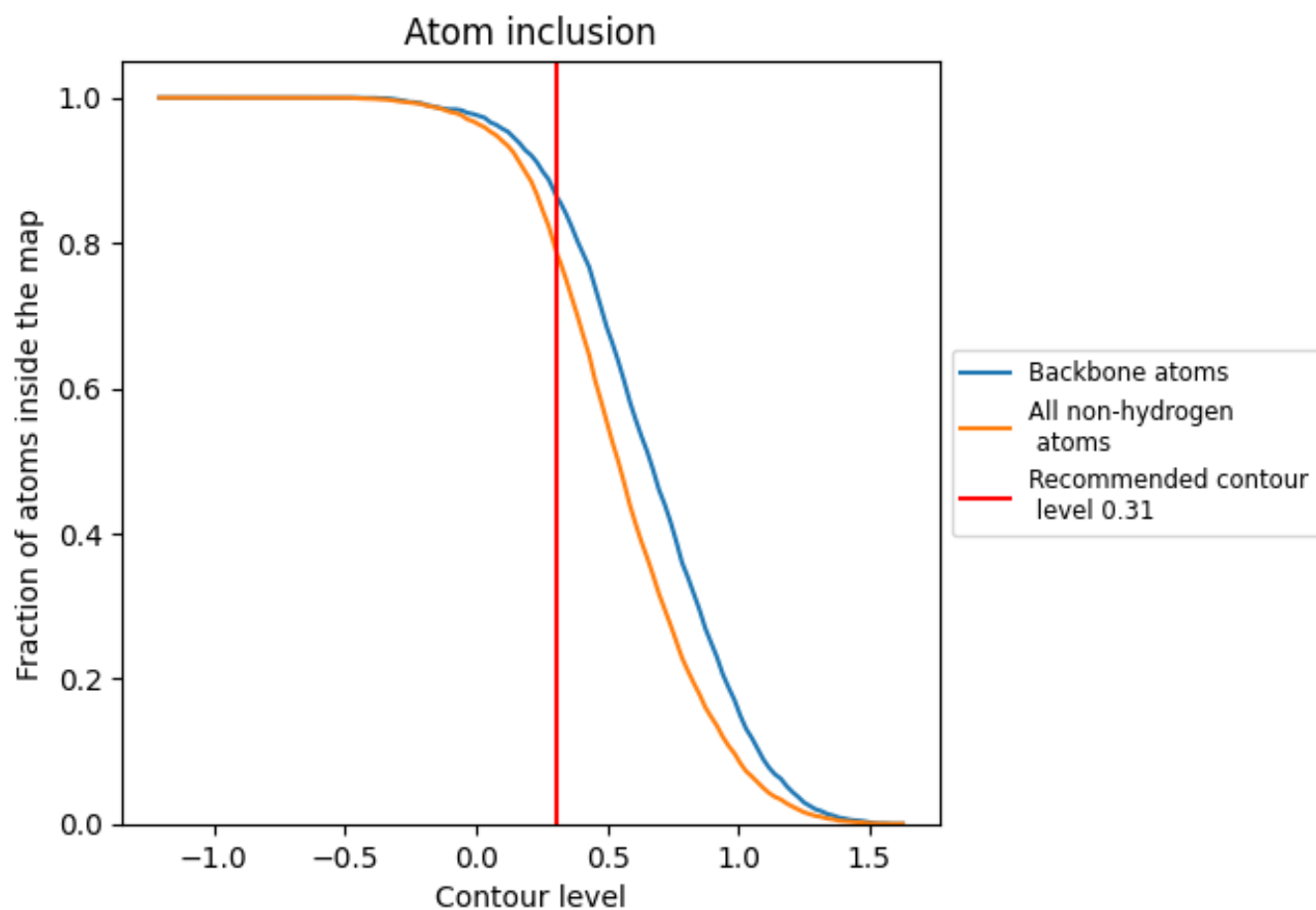
This section contains information regarding the fit between EMDB map EMD-12766 and PDB model 7OA6. Per-residue inclusion information can be found in section [3](#) on page [4](#).

### 9.1 Map-model overlay [i](#)



The images above show the 3D surface view of the map at the recommended contour level 0.31 at 50% transparency in yellow overlaid with a ribbon representation of the model coloured in blue. These images allow for the visual assessment of the quality of fit between the atomic model and the map.

## 9.2 Atom inclusion [i](#)



At the recommended contour level, 86% of all backbone atoms, 78% of all non-hydrogen atoms, are inside the map.