



wwPDB NMR Structure Validation Summary Report ⓘ

Jun 6, 2023 – 02:48 pm BST

PDB ID : 5OBN
BMRB ID : 34155
Title : NMR solution structure of U11/U12 65K protein's C-terminal RRM domain (381-516)
Authors : Norppa, A.J.; Kauppala, T.M.; Heikkinen, H.A.; Verma, B.; Iwai, H.; Frilander, M.J.
Deposited on : 2017-06-28

This is a wwPDB NMR Structure Validation Summary Report for a publicly released PDB entry.

We welcome your comments at validation@mail.wwpdb.org

A user guide is available at

<https://www.wwpdb.org/validation/2017/NMRValidationReportHelp>

with specific help available everywhere you see the ⓘ symbol.

The types of validation reports are described at

<http://www.wwpdb.org/validation/2017/FAQs#types>.

The following versions of software and data (see [references ⓘ](#)) were used in the production of this report:

MolProbity : 4.02b-467
Percentile statistics : 20191225.v01 (using entries in the PDB archive December 25th 2019)
wwPDB-RCI : v_1n_11_5_13_A (Berjanski et al., 2005)
PANAV : Wang et al. (2010)
wwPDB-ShiftChecker : v1.2
BMRB Restraints Analysis : v1.2
Ideal geometry (proteins) : Engh & Huber (2001)
Ideal geometry (DNA, RNA) : Parkinson et al. (1996)
Validation Pipeline (wwPDB-VP) : 2.33

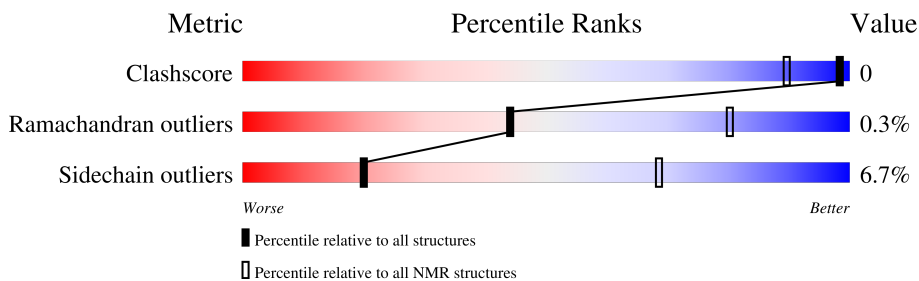
1 Overall quality at a glance

The following experimental techniques were used to determine the structure:

SOLUTION NMR

The overall completeness of chemical shifts assignment is 89%.

Percentile scores (ranging between 0-100) for global validation metrics of the entry are shown in the following graphic. The table shows the number of entries on which the scores are based.



Metric	Whole archive (#Entries)	NMR archive (#Entries)
Clashscore	158937	12864
Ramachandran outliers	154571	11451
Sidechain outliers	154315	11428

The table below summarises the geometric issues observed across the polymeric chains and their fit to the experimental data. The red, orange, yellow and green segments indicate the fraction of residues that contain outliers for ≥ 3 , 2, 1 and 0 types of geometric quality criteria. A cyan segment indicates the fraction of residues that are not part of the well-defined cores, and a grey segment represents the fraction of residues that are not modelled. The numeric value for each fraction is indicated below the corresponding segment, with a dot representing fractions $\leq 5\%$.

Mol	Chain	Length	Quality of chain
1	A	136	 75% 9% • 15%

2 Ensemble composition and analysis

This entry contains 20 models. Model 6 is the overall representative, medoid model (most similar to other models).

The following residues are included in the computation of the global validation metrics.

Well-defined (core) protein residues			
Well-defined core	Residue range (total)	Backbone RMSD (Å)	Medoid model
1	A:387-A:501 (115)	0.64	6

Ill-defined regions of proteins are excluded from the global statistics.

Ligands and non-protein polymers are included in the analysis.

The models can be grouped into 2 clusters and 1 single-model cluster was found.

Cluster number	Models
1	1, 2, 3, 4, 5, 6, 7, 8, 12, 14, 17, 18, 19
2	9, 10, 11, 13, 15, 16
Single-model clusters	20

3 Entry composition

There is only 1 type of molecule in this entry. The entry contains 2231 atoms, of which 1127 are hydrogens and 0 are deuteriums.

- Molecule 1 is a protein called RNA-binding protein 40.

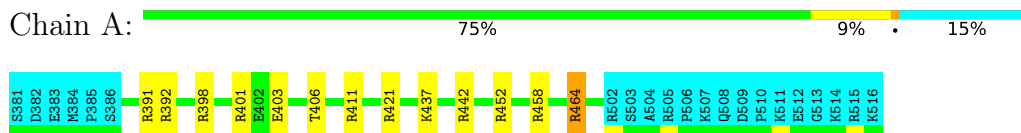
Mol	Chain	Residues	Atoms					Trace	
			Total	C	H	N	O		S
1	A	136	2231	694	1127	201	201	8	0

4 Residue-property plots [i](#)

4.1 Average score per residue in the NMR ensemble

These plots are provided for all protein, RNA, DNA and oligosaccharide chains in the entry. The first graphic is the same as shown in the summary in section 1 of this report. The second graphic shows the sequence where residues are colour-coded according to the number of geometric quality criteria for which they contain at least one outlier: green = 0, yellow = 1, orange = 2 and red = 3 or more. Stretches of 2 or more consecutive residues without any outliers are shown as green connectors. Residues which are classified as ill-defined in the NMR ensemble, are shown in cyan with an underline colour-coded according to the previous scheme. Residues which were present in the experimental sample, but not modelled in the final structure are shown in grey.

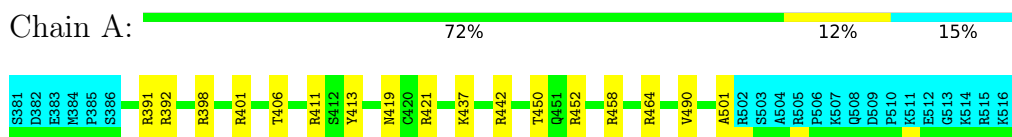
- Molecule 1: RNA-binding protein 40



4.2 Residue scores for the representative (medoid) model from the NMR ensemble

The representative model is number 6. Colouring as in section 4.1 above.

- Molecule 1: RNA-binding protein 40



5 Refinement protocol and experimental data overview

Of the 200 calculated structures, 20 were deposited, based on the following criterion: *target function*.

The following table shows the software used for structure solution, optimisation and refinement.

Software name	Classification	Version
Amber	refinement	14.0
CYANA	structure calculation	3.0
TALOS	structure calculation	N

The following table shows chemical shift validation statistics as aggregates over all chemical shift files. Detailed validation can be found in section 7 of this report.

Chemical shift file(s)	working_cs.cif
Number of chemical shift lists	1
Total number of shifts	1714
Number of shifts mapped to atoms	1714
Number of unparsed shifts	0
Number of shifts with mapping errors	0
Number of shifts with mapping warnings	0
Assignment completeness (well-defined parts)	89%

6 Model quality i

6.1 Standard geometry i

The Z score for a bond length (or angle) is the number of standard deviations the observed value is removed from the expected value. A bond length (or angle) with $|Z| > 5$ is considered an outlier worth inspection. RMSZ is the (average) root-mean-square of all Z scores of the bond lengths (or angles).

Mol	Chain	Bond lengths		Bond angles	
		RMSZ	#Z>5	RMSZ	#Z>5
1	A	0.75±0.01	0±0/953 (0.0± 0.0%)	1.18±0.03	9±1/1272 (0.7± 0.1%)
All	All	0.75	0/19060 (0.0%)	1.18	173/25440 (0.7%)

Chiral center outliers are detected by calculating the chiral volume of a chiral center and verifying if the center is modelled as a planar moiety or with the opposite hand. A planarity outlier is detected by checking planarity of atoms in a peptide group, atoms in a mainchain group or atoms of a sidechain that are expected to be planar.

Mol	Chain	Chirality	Planarity
1	A	0.0±0.0	0.9±0.9
All	All	0	19

There are no bond-length outliers.

5 of 16 unique angle outliers are listed below. They are sorted according to the Z-score of the worst occurrence in the ensemble.

Mol	Chain	Res	Type	Atoms	Z	Observed(°)	Ideal(°)	Models	
								Worst	Total
1	A	452	ARG	NE-CZ-NH1	10.26	125.43	120.30	7	19
1	A	458	ARG	NE-CZ-NH1	9.98	125.29	120.30	11	16
1	A	398	ARG	NE-CZ-NH1	9.97	125.29	120.30	5	18
1	A	401	ARG	NE-CZ-NH1	9.40	125.00	120.30	11	17
1	A	464	ARG	NE-CZ-NH1	9.36	124.98	120.30	13	13

There are no chirality outliers.

5 of 12 unique planar outliers are listed below. They are sorted by the frequency of occurrence in the ensemble.

Mol	Chain	Res	Type	Group	Models (Total)
1	A	501	ALA	Peptide	3
1	A	398	ARG	Sidechain	2
1	A	442	ARG	Sidechain	2

Continued on next page...

Continued from previous page...

Mol	Chain	Res	Type	Group	Models (Total)
1	A	413	TYR	Sidechain	2
1	A	443	TYR	Sidechain	2

6.2 Too-close contacts [i](#)

In the following table, the Non-H and H(model) columns list the number of non-hydrogen atoms and hydrogen atoms in each chain respectively. The H(added) column lists the number of hydrogen atoms added and optimized by MolProbity. The Clashes column lists the number of clashes averaged over the ensemble.

Mol	Chain	Non-H	H(model)	H(added)	Clashes
1	A	936	953	953	0±0
All	All	18720	19060	19060	6

The all-atom clashscore is defined as the number of clashes found per 1000 atoms (including hydrogen atoms). The all-atom clashscore for this structure is 0.

All unique clashes are listed below, sorted by their clash magnitude.

Atom-1	Atom-2	Clash(Å)	Distance(Å)	Models	
				Worst	Total
1:A:483:LEU:HD23	1:A:498:VAL:HG12	0.52	1.81	10	5
1:A:419:ASN:ND2	1:A:421:ARG:H	0.41	2.13	5	1

6.3 Torsion angles [i](#)

6.3.1 Protein backbone [i](#)

In the following table, the Percentiles column shows the percent Ramachandran outliers of the chain as a percentile score with respect to all PDB entries followed by that with respect to all NMR entries. The Analysed column shows the number of residues for which the backbone conformation was analysed and the total number of residues.

Mol	Chain	Analysed	Favoured	Allowed	Outliers	Percentiles	
1	A	115/136 (85%)	107±2 (93±2%)	8±2 (7±2%)	0±1 (0±1%)	44	80
All	All	2300/2720 (85%)	2138 (93%)	154 (7%)	8 (0%)	44	80

All 3 unique Ramachandran outliers are listed below. They are sorted by the frequency of occurrence in the ensemble.

Mol	Chain	Res	Type	Models (Total)
1	A	490	VAL	6
1	A	428	ALA	1
1	A	429	LYS	1

6.3.2 Protein sidechains [i](#)

In the following table, the Percentiles column shows the percent sidechain outliers of the chain as a percentile score with respect to all PDB entries followed by that with respect to all NMR entries. The Analysed column shows the number of residues for which the sidechain conformation was analysed and the total number of residues.

Mol	Chain	Analysed	Rotameric	Outliers	Percentiles	
1	A	99/118 (84%)	92±2 (93±2%)	7±2 (7±2%)	20	68
All	All	1980/2360 (84%)	1847 (93%)	133 (7%)	20	68

5 of 34 unique residues with a non-rotameric sidechain are listed below. They are sorted by the frequency of occurrence in the ensemble.

Mol	Chain	Res	Type	Models (Total)
1	A	406	THR	20
1	A	464	ARG	17
1	A	411	ARG	12
1	A	437	LYS	12
1	A	403	GLU	11

6.3.3 RNA [i](#)

There are no RNA molecules in this entry.

6.4 Non-standard residues in protein, DNA, RNA chains [i](#)

There are no non-standard protein/DNA/RNA residues in this entry.

6.5 Carbohydrates [i](#)

There are no monosaccharides in this entry.

6.6 Ligand geometry [i](#)

There are no ligands in this entry.

6.7 Other polymers [i](#)

There are no such molecules in this entry.

6.8 Polymer linkage issues [i](#)

There are no chain breaks in this entry.

7 Chemical shift validation [i](#)

The completeness of assignment taking into account all chemical shift lists is 89% for the well-defined parts and 88% for the entire structure.

7.1 Chemical shift list 1

File name: working_cs.cif

Chemical shift list name: *CRRM_121217*

7.1.1 Bookkeeping [i](#)

The following table shows the results of parsing the chemical shift list and reports the number of nuclei with statistically unusual chemical shifts.

Total number of shifts	1714
Number of shifts mapped to atoms	1714
Number of unparsed shifts	0
Number of shifts with mapping errors	0
Number of shifts with mapping warnings	0
Number of shift outliers (ShiftChecker)	1

7.1.2 Chemical shift referencing [i](#)

The following table shows the suggested chemical shift referencing corrections.

Nucleus	# values	Correction \pm precision, ppm	Suggested action
$^{13}\text{C}_\alpha$	136	-0.02 ± 0.11	None needed (< 0.5 ppm)
$^{13}\text{C}_\beta$	126	0.00 ± 0.12	None needed (< 0.5 ppm)
$^{13}\text{C}'$	135	0.31 ± 0.13	None needed (< 0.5 ppm)
^{15}N	131	0.27 ± 0.60	None needed (< 0.5 ppm)

7.1.3 Completeness of resonance assignments [i](#)

The following table shows the completeness of the chemical shift assignments for the well-defined regions of the structure. The overall completeness is 89%, i.e. 1471 atoms were assigned a chemical shift out of a possible 1649. 0 out of 15 assigned methyl groups (LEU and VAL) were assigned stereospecifically.

	Total	^1H	^{13}C	^{15}N
Backbone	568/575 (99%)	231/234 (99%)	229/230 (100%)	108/111 (97%)
Sidechain	822/952 (86%)	557/613 (91%)	258/290 (89%)	7/49 (14%)

Continued on next page...

Continued from previous page...

	Total	¹ H	¹³ C	¹⁵ N
Aromatic	81/122 (66%)	49/59 (83%)	32/62 (52%)	0/1 (0%)
Overall	1471/1649 (89%)	837/906 (92%)	519/582 (89%)	115/161 (71%)

7.1.4 Statistically unusual chemical shifts [i](#)

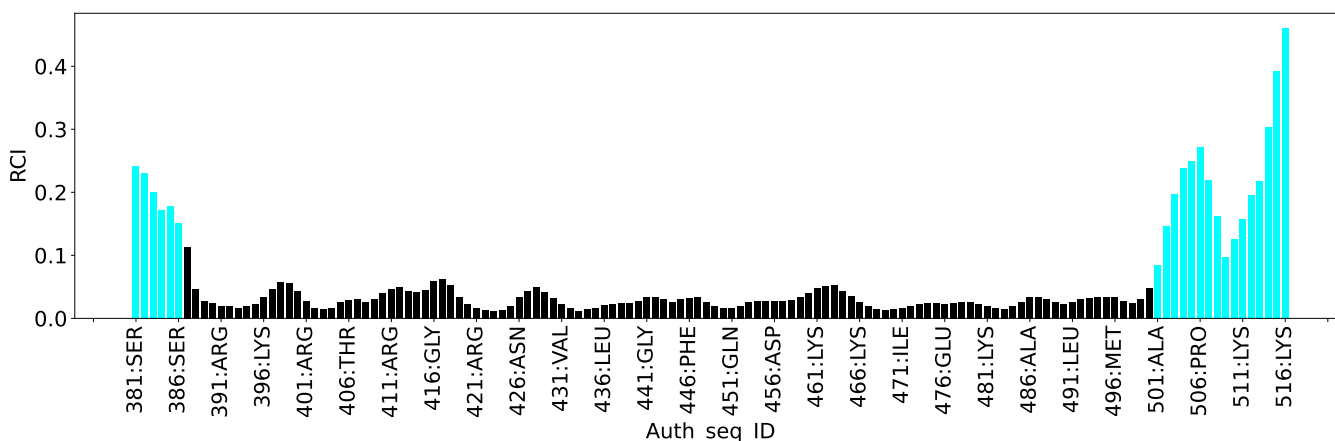
The following table lists the statistically unusual chemical shifts. These are statistical measures, and large deviations from the mean do not necessarily imply incorrect assignments. Molecules containing paramagnetic centres or hemes are expected to give rise to anomalous chemical shifts.

List Id	Chain	Res	Type	Atom	Shift, ppm	Expected range, ppm	Z-score
1	A	430	HIS	CE1	118.59	126.08 – 149.12	-8.2

7.1.5 Random Coil Index (RCI) plots [i](#)

The image below reports *random coil index* values for the protein chains in the structure. The height of each bar gives a probability of a given residue to be disordered, as predicted from the available chemical shifts and the amino acid sequence. A value above 0.2 is an indication of significant predicted disorder. The colour of the bar shows whether the residue is in the well-defined core (black) or in the ill-defined residue ranges (cyan), as described in section 2 on ensemble composition. If well-defined core and ill-defined regions are not identified then it is shown as gray bars.

Random coil index (RCI) for chain A:



8 NMR restraints analysis

8.1 Conformationally restricting restraints

The following table provides the summary of experimentally observed NMR restraints in different categories. Restraints are classified into different categories based on the sequence separation of the atoms involved.

Description	Value
Total distance restraints	2399
Intra-residue ($ i-j =0$)	568
Sequential ($ i-j =1$)	656
Medium range ($ i-j >1$ and $ i-j <5$)	414
Long range ($ i-j \geq 5$)	761
Inter-chain	0
Hydrogen bond restraints	0
Disulfide bond restraints	0
Total dihedral-angle restraints	0
Number of unmapped restraints	0
Number of restraints per residue	17.6
Number of long range restraints per residue ¹	5.6

¹Long range hydrogen bonds and disulfide bonds are counted as long range restraints while calculating the number of long range restraints per residue

8.2 Residual restraint violations

This section provides the overview of the restraint violations analysis. The violations are binned as small, medium and large violations based on its absolute value. Average number of violations per model is calculated by dividing the total number of violations in each bin by the size of the ensemble.

8.2.1 Average number of distance violations per model

Distance violations less than 0.1 Å are not included in the calculation.

Bins (Å)	Average number of violations per model	Max (Å)
0.1-0.2 (Small)	11.4	0.2
0.2-0.5 (Medium)	6.4	0.5
>0.5 (Large)	1.6	1.12

8.2.2 Average number of dihedral-angle violations per model

Dihedral-angle violations less than 1° are not included in the calculation. There are no dihedral-angle violations

9 Distance violation analysis [i](#)

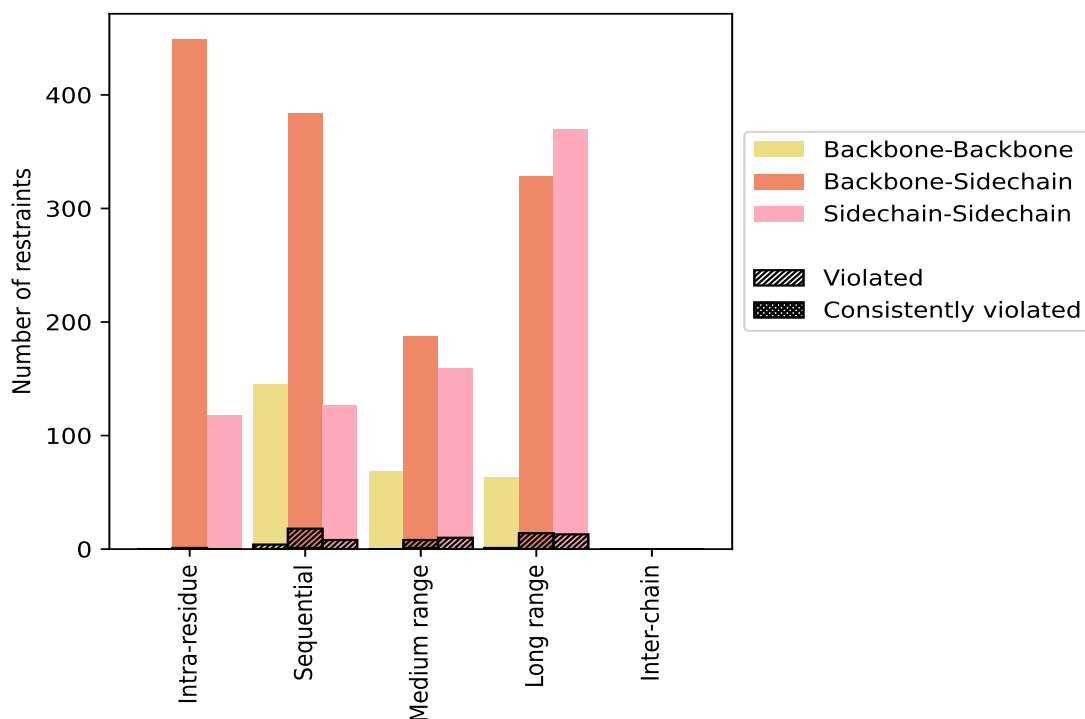
9.1 Summary of distance violations [i](#)

The following table shows the summary of distance violations in different restraint categories based on the sequence separation of the atoms involved. Each category is further sub-divided into three sub-categories based on the atoms involved. Violations less than 0.1 Å are not included in the statistics.

Restrains type	Count	% ¹	Violated ³			Consistently Violated ⁴		
			Count	% ²	% ¹	Count	% ²	% ¹
Intra-residue ($i-j =0$)	568	23.7	1	0.2	0.0	0	0.0	0.0
Backbone-Backbone	1	0.0	0	0.0	0.0	0	0.0	0.0
Backbone-Sidechain	449	18.7	1	0.2	0.0	0	0.0	0.0
Sidechain-Sidechain	118	4.9	0	0.0	0.0	0	0.0	0.0
Sequential ($i-j =1$)	656	27.3	30	4.6	1.3	1	0.2	0.0
Backbone-Backbone	145	6.0	4	2.8	0.2	0	0.0	0.0
Backbone-Sidechain	384	16.0	18	4.7	0.8	1	0.3	0.0
Sidechain-Sidechain	127	5.3	8	6.3	0.3	0	0.0	0.0
Medium range ($i-j >1$ & $i-j <5$)	414	17.3	18	4.3	0.8	1	0.2	0.0
Backbone-Backbone	68	2.8	0	0.0	0.0	0	0.0	0.0
Backbone-Sidechain	187	7.8	8	4.3	0.3	1	0.5	0.0
Sidechain-Sidechain	159	6.6	10	6.3	0.4	0	0.0	0.0
Long range ($i-j \geq 5$)	761	31.7	28	3.7	1.2	0	0.0	0.0
Backbone-Backbone	63	2.6	1	1.6	0.0	0	0.0	0.0
Backbone-Sidechain	328	13.7	14	4.3	0.6	0	0.0	0.0
Sidechain-Sidechain	370	15.4	13	3.5	0.5	0	0.0	0.0
Inter-chain	0	0.0	0	0.0	0.0	0	0.0	0.0
Backbone-Backbone	0	0.0	0	0.0	0.0	0	0.0	0.0
Backbone-Sidechain	0	0.0	0	0.0	0.0	0	0.0	0.0
Sidechain-Sidechain	0	0.0	0	0.0	0.0	0	0.0	0.0
Hydrogen bond	0	0.0	0	0.0	0.0	0	0.0	0.0
Disulfide bond	0	0.0	0	0.0	0.0	0	0.0	0.0
Total	2399	100.0	77	3.2	3.2	2	0.1	0.1
Backbone-Backbone	277	11.5	5	1.8	0.2	0	0.0	0.0
Backbone-Sidechain	1348	56.2	41	3.0	1.7	2	0.1	0.1
Sidechain-Sidechain	774	32.3	31	4.0	1.3	0	0.0	0.0

¹ percentage calculated with respect to the total number of distance restraints, ² percentage calculated with respect to the number of restraints in a particular restraint category, ³ violated in at least one model, ⁴ violated in all the models

9.1.1 Bar chart : Distribution of distance restraints and violations [i](#)



Violated and consistently violated restraints are shown using different hatch patterns in their respective categories. The hydrogen bonds and disulfid bonds are counted in their appropriate category on the x-axis

9.2 Distance violation statistics for each model [i](#)

The following table provides the distance violation statistics for each model in the ensemble. Violations less than 0.1 Å are not included in the statistics.

Model ID	Number of violations						Mean (Å)	Max (Å)	SD ⁶ (Å)	Median (Å)
	IR ¹	SQ ²	MR ³	LR ⁴	IC ⁵	Total				
1	1	11	3	9	0	24	0.22	0.77	0.16	0.14
2	0	7	5	6	0	18	0.23	0.83	0.17	0.17
3	0	8	6	8	0	22	0.22	0.39	0.09	0.21
4	0	9	6	8	0	23	0.3	0.95	0.26	0.16
5	0	5	7	4	0	16	0.3	0.79	0.22	0.2
6	0	11	5	5	0	21	0.28	0.85	0.19	0.21
7	0	5	7	6	0	18	0.19	0.29	0.06	0.18
8	0	8	5	2	0	15	0.29	1.0	0.27	0.16
9	0	6	6	6	0	18	0.22	1.1	0.22	0.16
10	0	10	2	3	0	15	0.22	0.49	0.11	0.23
11	0	10	4	7	0	21	0.23	0.51	0.12	0.17

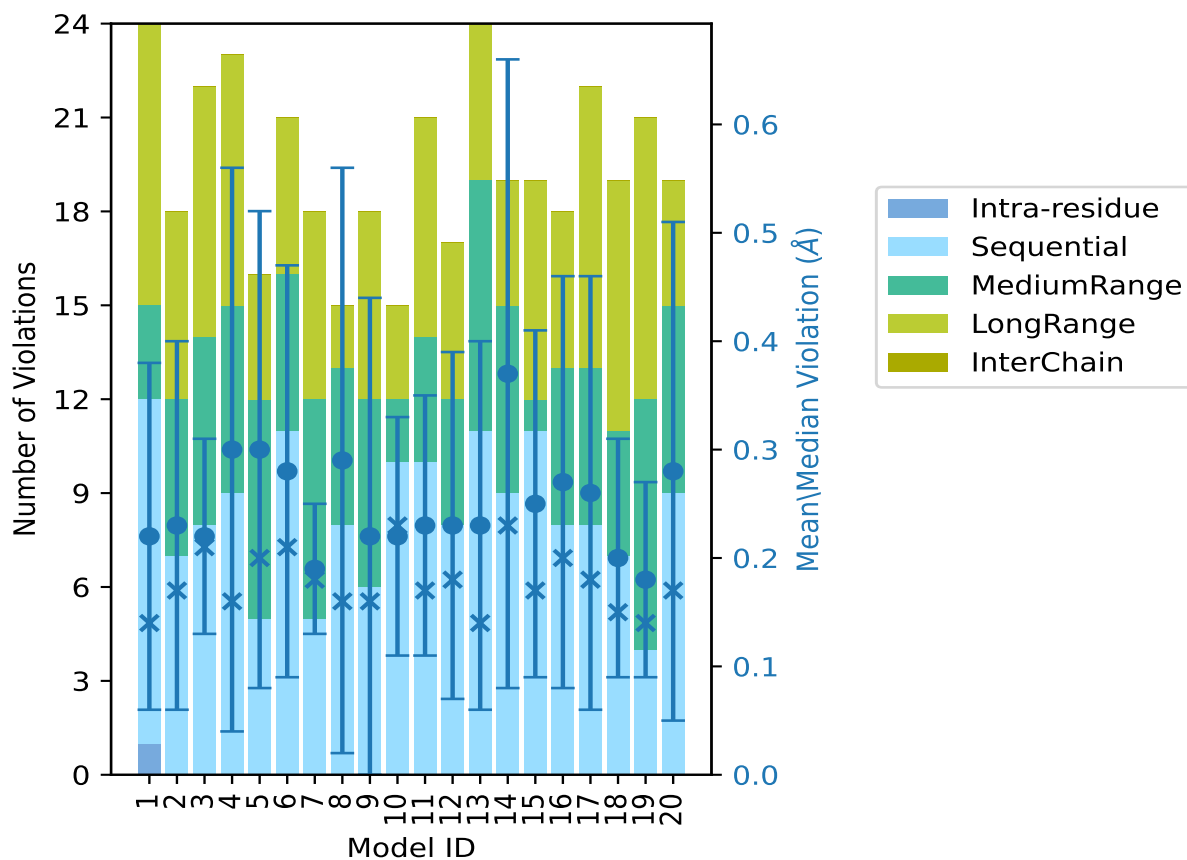
Continued on next page...

Continued from previous page...

Model ID	Number of violations					Total	Mean (Å)	Max (Å)	SD ⁶ (Å)	Median (Å)
	IR ¹	SQ ²	MR ³	LR ⁴	IC ⁵					
12	0	8	4	5	0	17	0.23	0.79	0.16	0.18
13	0	11	8	5	0	24	0.23	0.68	0.17	0.14
14	0	9	6	4	0	19	0.37	1.12	0.29	0.23
15	0	11	1	7	0	19	0.25	0.72	0.16	0.17
16	0	8	5	5	0	18	0.27	0.84	0.19	0.2
17	0	8	5	9	0	22	0.26	0.84	0.2	0.18
18	0	7	4	8	0	19	0.2	0.41	0.11	0.15
19	0	4	8	9	0	21	0.18	0.4	0.09	0.14
20	0	9	6	4	0	19	0.28	0.99	0.23	0.17

¹Intra-residue restraints, ²Sequential restraints, ³Medium range restraints, ⁴Long range restraints, ⁵Inter-chain restraints, ⁶Standard deviation

9.2.1 Bar graph : Distance Violation statistics for each model [i](#)



The mean(dot),median(x) and the standard deviation are shown in blue with respect to the y axis on the right

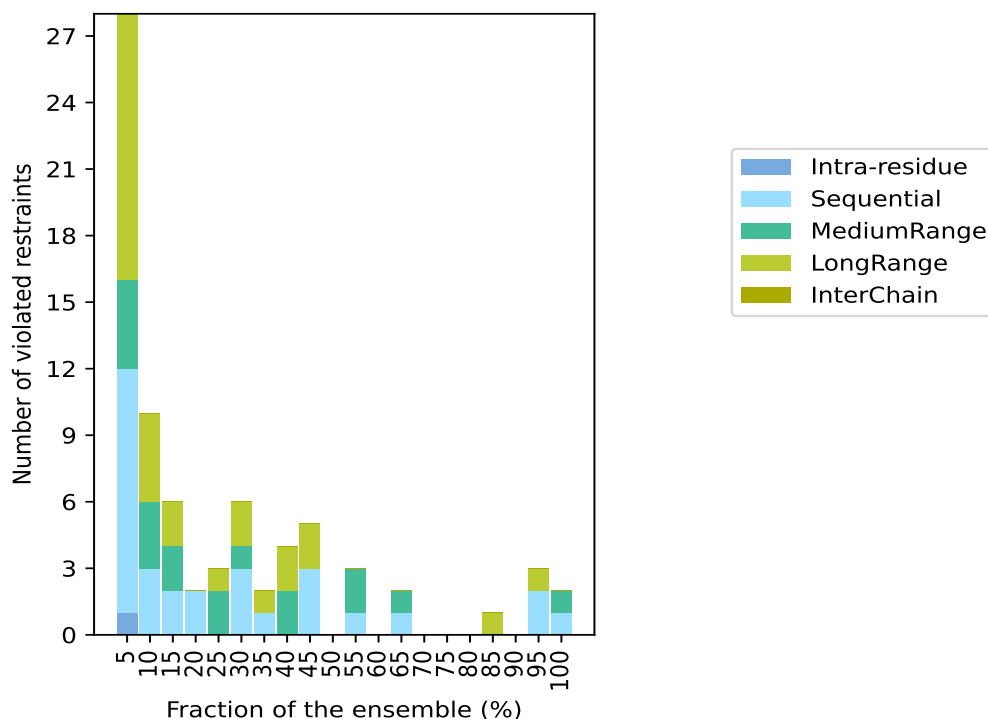
9.3 Distance violation statistics for the ensemble

Violation analysis may find that some restraints are violated in few models and some are violated in most of models. The following table provides this information as number of violated restraints for a given fraction of the ensemble. In total, 2322(IR:567, SQ:626, MR:396, LR:733, IC:0) restraints are not violated in the ensemble.

Number of violated restraints						Fraction of the ensemble	
IR ¹	SQ ²	MR ³	LR ⁴	IC ⁵	Total	Count ⁶	%
1	11	4	12	0	28	1	5.0
0	3	3	4	0	10	2	10.0
0	2	2	2	0	6	3	15.0
0	2	0	0	0	2	4	20.0
0	0	2	1	0	3	5	25.0
0	3	1	2	0	6	6	30.0
0	1	0	1	0	2	7	35.0
0	0	2	2	0	4	8	40.0
0	3	0	2	0	5	9	45.0
0	0	0	0	0	0	10	50.0
0	1	2	0	0	3	11	55.0
0	0	0	0	0	0	12	60.0
0	1	1	0	0	2	13	65.0
0	0	0	0	0	0	14	70.0
0	0	0	0	0	0	15	75.0
0	0	0	0	0	0	16	80.0
0	0	0	1	0	1	17	85.0
0	0	0	0	0	0	18	90.0
0	2	0	1	0	3	19	95.0
0	1	1	0	0	2	20	100.0

¹Intra-residue restraints, ²Sequential restraints, ³Medium range restraints, ⁴Long range restraints, ⁵Inter-chain restraints, ⁶ Number of models with violations

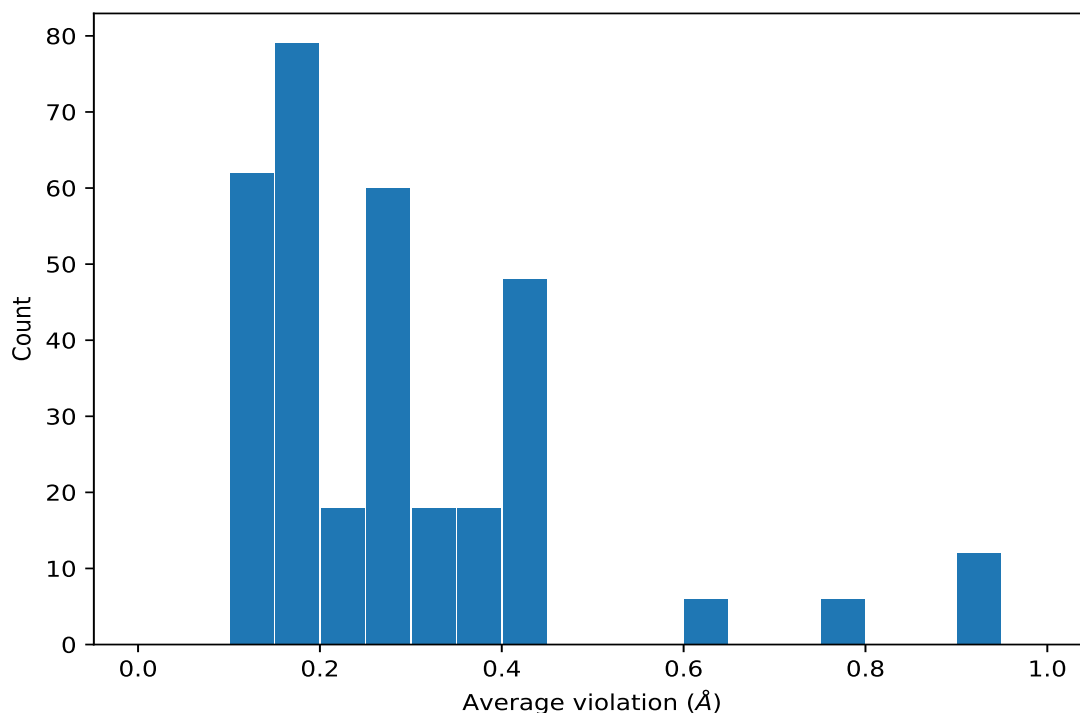
9.3.1 Bar graph : Distance violation statistics for the ensemble [i](#)



9.4 Most violated distance restraints in the ensemble [i](#)

9.4.1 Histogram : Distribution of mean distance violations [i](#)

The following histogram shows the distribution of the average value of the violation. The average is calculated for each restraint that is violated in more than one model over all the violated models in the ensemble



9.4.2 Table: Most violated distance restraints [i](#)

The following table provides the mean and the standard deviation of the violations for the 10 worst performing restraints, sorted by number of violated models and the mean violation value. The Key (restraint list ID, restraint ID) is the unique identifier for a given restraint. Rows with same key represent combinatorial or ambiguous restraints and are counted as a single restraint.

Key	Atom-1	Atom-2	Models ¹	Mean (Å)	SD ¹ (Å)	Median (Å)
(1,2329)	1:A:481:LYS:HA	1:A:483:LEU:HD11	20	0.33	0.09	0.33
(1,2329)	1:A:481:LYS:HA	1:A:483:LEU:HD12	20	0.33	0.09	0.33
(1,2329)	1:A:481:LYS:HA	1:A:483:LEU:HD13	20	0.33	0.09	0.33
(1,2329)	1:A:481:LYS:HA	1:A:483:LEU:HD21	20	0.33	0.09	0.33
(1,2329)	1:A:481:LYS:HA	1:A:483:LEU:HD22	20	0.33	0.09	0.33
(1,2329)	1:A:481:LYS:HA	1:A:483:LEU:HD23	20	0.33	0.09	0.33
(1,1569)	1:A:439:ILE:HG12	1:A:440:PHE:H	20	0.13	0.01	0.13
(1,2353)	1:A:490:VAL:HG11	1:A:491:LEU:HA	19	0.61	0.23	0.76
(1,2353)	1:A:490:VAL:HG12	1:A:491:LEU:HA	19	0.61	0.23	0.76
(1,2353)	1:A:490:VAL:HG13	1:A:491:LEU:HA	19	0.61	0.23	0.76
(1,2353)	1:A:490:VAL:HG21	1:A:491:LEU:HA	19	0.61	0.23	0.76
(1,2353)	1:A:490:VAL:HG22	1:A:491:LEU:HA	19	0.61	0.23	0.76
(1,2353)	1:A:490:VAL:HG23	1:A:491:LEU:HA	19	0.61	0.23	0.76
(1,2352)	1:A:490:VAL:HG11	1:A:491:LEU:H	19	0.41	0.06	0.43
(1,2352)	1:A:490:VAL:HG12	1:A:491:LEU:H	19	0.41	0.06	0.43
(1,2352)	1:A:490:VAL:HG13	1:A:491:LEU:H	19	0.41	0.06	0.43

Continued on next page...

Continued from previous page...

Key	Atom-1	Atom-2	Models ¹	Mean (Å)	SD ¹ (Å)	Median (Å)
(1,2352)	1:A:490:VAL:HG21	1:A:491:LEU:H	19	0.41	0.06	0.43
(1,2352)	1:A:490:VAL:HG22	1:A:491:LEU:H	19	0.41	0.06	0.43
(1,2352)	1:A:490:VAL:HG23	1:A:491:LEU:H	19	0.41	0.06	0.43
(1,292)	1:A:433:GLU:HB3	1:A:460:MET:H	19	0.16	0.02	0.16
(1,2062)	1:A:422:ILE:HG12	1:A:483:LEU:HD11	17	0.18	0.05	0.18
(1,2062)	1:A:422:ILE:HG12	1:A:483:LEU:HD12	17	0.18	0.05	0.18
(1,2062)	1:A:422:ILE:HG12	1:A:483:LEU:HD13	17	0.18	0.05	0.18
(1,2062)	1:A:422:ILE:HG12	1:A:483:LEU:HD21	17	0.18	0.05	0.18
(1,2062)	1:A:422:ILE:HG12	1:A:483:LEU:HD22	17	0.18	0.05	0.18
(1,2062)	1:A:422:ILE:HG12	1:A:483:LEU:HD23	17	0.18	0.05	0.18
(1,2062)	1:A:422:ILE:HG13	1:A:483:LEU:HD11	17	0.18	0.05	0.18
(1,2062)	1:A:422:ILE:HG13	1:A:483:LEU:HD12	17	0.18	0.05	0.18
(1,2062)	1:A:422:ILE:HG13	1:A:483:LEU:HD13	17	0.18	0.05	0.18
(1,2062)	1:A:422:ILE:HG13	1:A:483:LEU:HD21	17	0.18	0.05	0.18
(1,2062)	1:A:422:ILE:HG13	1:A:483:LEU:HD22	17	0.18	0.05	0.18
(1,2062)	1:A:422:ILE:HG13	1:A:483:LEU:HD23	17	0.18	0.05	0.18
(1,2303)	1:A:473:LEU:HD11	1:A:475:ASN:HB3	13	0.22	0.07	0.22
(1,2303)	1:A:473:LEU:HD12	1:A:475:ASN:HB3	13	0.22	0.07	0.22
(1,2303)	1:A:473:LEU:HD13	1:A:475:ASN:HB3	13	0.22	0.07	0.22
(1,2303)	1:A:473:LEU:HD21	1:A:475:ASN:HB3	13	0.22	0.07	0.22
(1,2303)	1:A:473:LEU:HD22	1:A:475:ASN:HB3	13	0.22	0.07	0.22
(1,2303)	1:A:473:LEU:HD23	1:A:475:ASN:HB3	13	0.22	0.07	0.22
(1,1993)	1:A:409:VAL:HG11	1:A:410:PHE:HB3	13	0.2	0.06	0.21
(1,1993)	1:A:409:VAL:HG12	1:A:410:PHE:HB3	13	0.2	0.06	0.21
(1,1993)	1:A:409:VAL:HG13	1:A:410:PHE:HB3	13	0.2	0.06	0.21
(1,1993)	1:A:409:VAL:HG21	1:A:410:PHE:HB3	13	0.2	0.06	0.21
(1,1993)	1:A:409:VAL:HG22	1:A:410:PHE:HB3	13	0.2	0.06	0.21
(1,1993)	1:A:409:VAL:HG23	1:A:410:PHE:HB3	13	0.2	0.06	0.21
(1,2116)	1:A:427:LEU:HD11	1:A:431:VAL:HG11	11	0.37	0.14	0.32
(1,2116)	1:A:427:LEU:HD11	1:A:431:VAL:HG12	11	0.37	0.14	0.32
(1,2116)	1:A:427:LEU:HD11	1:A:431:VAL:HG13	11	0.37	0.14	0.32
(1,2116)	1:A:427:LEU:HD12	1:A:431:VAL:HG11	11	0.37	0.14	0.32
(1,2116)	1:A:427:LEU:HD12	1:A:431:VAL:HG12	11	0.37	0.14	0.32
(1,2116)	1:A:427:LEU:HD12	1:A:431:VAL:HG13	11	0.37	0.14	0.32
(1,2116)	1:A:427:LEU:HD13	1:A:431:VAL:HG11	11	0.37	0.14	0.32
(1,2116)	1:A:427:LEU:HD13	1:A:431:VAL:HG12	11	0.37	0.14	0.32
(1,2116)	1:A:427:LEU:HD13	1:A:431:VAL:HG13	11	0.37	0.14	0.32
(1,2116)	1:A:427:LEU:HD21	1:A:431:VAL:HG11	11	0.37	0.14	0.32
(1,2116)	1:A:427:LEU:HD21	1:A:431:VAL:HG12	11	0.37	0.14	0.32
(1,2116)	1:A:427:LEU:HD21	1:A:431:VAL:HG13	11	0.37	0.14	0.32
(1,2116)	1:A:427:LEU:HD22	1:A:431:VAL:HG11	11	0.37	0.14	0.32
(1,2116)	1:A:427:LEU:HD22	1:A:431:VAL:HG12	11	0.37	0.14	0.32

Continued on next page...

Continued from previous page...

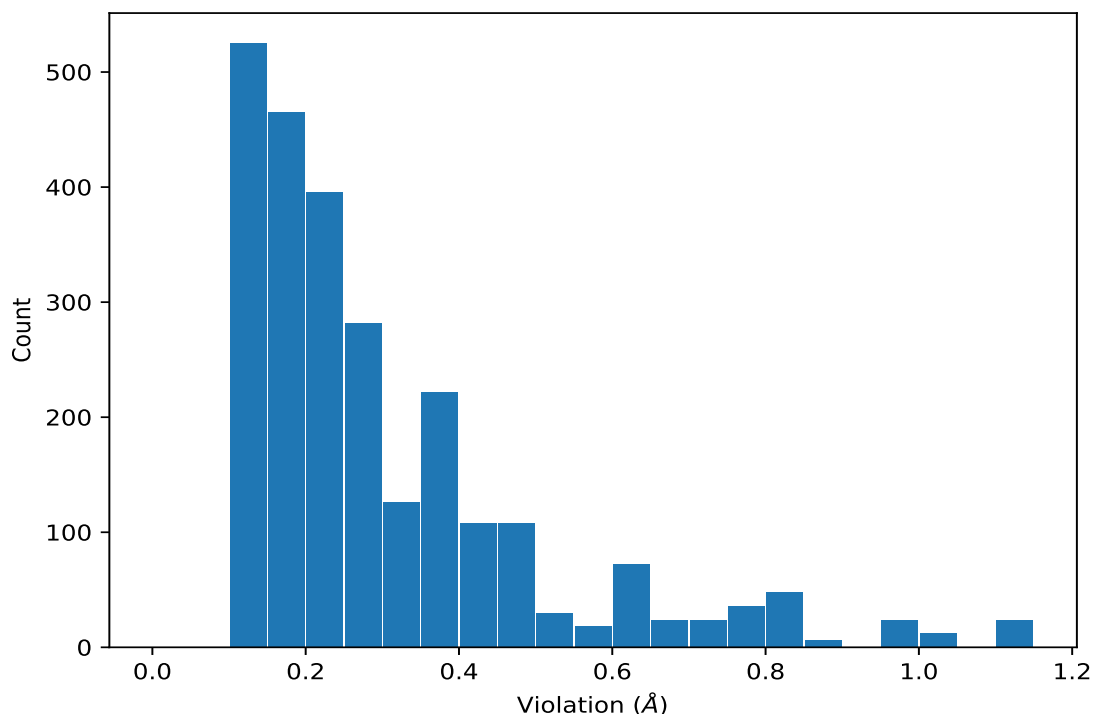
Key	Atom-1	Atom-2	Models ¹	Mean (Å)	SD ¹ (Å)	Median (Å)
(1,2116)	1:A:427:LEU:HD22	1:A:431:VAL:HG13	11	0.37	0.14	0.32
(1,2116)	1:A:427:LEU:HD23	1:A:431:VAL:HG11	11	0.37	0.14	0.32
(1,2116)	1:A:427:LEU:HD23	1:A:431:VAL:HG12	11	0.37	0.14	0.32
(1,2116)	1:A:427:LEU:HD23	1:A:431:VAL:HG13	11	0.37	0.14	0.32
(1,2115)	1:A:427:LEU:HD11	1:A:428:ALA:HB1	11	0.29	0.07	0.3

¹Number of violated models, ²Standard deviation

9.5 All violated distance restraints [i](#)

9.5.1 Histogram : Distribution of distance violations [i](#)

The following histogram shows the distribution of the absolute value of the violation for all violated restraints in the ensemble.



9.5.2 Table : All distance violations [i](#)

The following table provides the 10 worst performing restraints, sorted by the violation value. The Key (restraint list ID, restraint ID) is the unique identifier for a given restraint. Rows with same key represent combinatorial or ambiguous restraints and are counted as a single restraint.

Key	Atom-1	Atom-2	Model ID	Violation (Å)
(1,2374)	1:A:491:LEU:HD11	1:A:492:PHE:HD1	14	1.12
(1,2374)	1:A:491:LEU:HD11	1:A:492:PHE:HD2	14	1.12
(1,2374)	1:A:491:LEU:HD12	1:A:492:PHE:HD1	14	1.12
(1,2374)	1:A:491:LEU:HD12	1:A:492:PHE:HD2	14	1.12
(1,2374)	1:A:491:LEU:HD13	1:A:492:PHE:HD1	14	1.12
(1,2374)	1:A:491:LEU:HD13	1:A:492:PHE:HD2	14	1.12
(1,2374)	1:A:491:LEU:HD21	1:A:492:PHE:HD1	14	1.12
(1,2374)	1:A:491:LEU:HD21	1:A:492:PHE:HD2	14	1.12
(1,2374)	1:A:491:LEU:HD22	1:A:492:PHE:HD1	14	1.12
(1,2374)	1:A:491:LEU:HD22	1:A:492:PHE:HD2	14	1.12
(1,2374)	1:A:491:LEU:HD23	1:A:492:PHE:HD1	14	1.12
(1,2374)	1:A:491:LEU:HD23	1:A:492:PHE:HD2	14	1.12
(1,2374)	1:A:491:LEU:HD11	1:A:492:PHE:HD1	9	1.1
(1,2374)	1:A:491:LEU:HD11	1:A:492:PHE:HD2	9	1.1
(1,2374)	1:A:491:LEU:HD12	1:A:492:PHE:HD1	9	1.1
(1,2374)	1:A:491:LEU:HD12	1:A:492:PHE:HD2	9	1.1
(1,2374)	1:A:491:LEU:HD13	1:A:492:PHE:HD1	9	1.1
(1,2374)	1:A:491:LEU:HD13	1:A:492:PHE:HD2	9	1.1
(1,2374)	1:A:491:LEU:HD21	1:A:492:PHE:HD1	9	1.1
(1,2374)	1:A:491:LEU:HD21	1:A:492:PHE:HD2	9	1.1
(1,2374)	1:A:491:LEU:HD22	1:A:492:PHE:HD1	9	1.1
(1,2374)	1:A:491:LEU:HD22	1:A:492:PHE:HD2	9	1.1
(1,2374)	1:A:491:LEU:HD23	1:A:492:PHE:HD1	9	1.1
(1,2374)	1:A:491:LEU:HD23	1:A:492:PHE:HD2	9	1.1
(1,2374)	1:A:491:LEU:HD11	1:A:492:PHE:HD1	8	1.0
(1,2374)	1:A:491:LEU:HD11	1:A:492:PHE:HD2	8	1.0
(1,2374)	1:A:491:LEU:HD12	1:A:492:PHE:HD1	8	1.0
(1,2374)	1:A:491:LEU:HD12	1:A:492:PHE:HD2	8	1.0
(1,2374)	1:A:491:LEU:HD13	1:A:492:PHE:HD1	8	1.0
(1,2374)	1:A:491:LEU:HD13	1:A:492:PHE:HD2	8	1.0
(1,2374)	1:A:491:LEU:HD21	1:A:492:PHE:HD1	8	1.0
(1,2374)	1:A:491:LEU:HD21	1:A:492:PHE:HD2	8	1.0
(1,2374)	1:A:491:LEU:HD22	1:A:492:PHE:HD1	8	1.0
(1,2374)	1:A:491:LEU:HD22	1:A:492:PHE:HD2	8	1.0
(1,2374)	1:A:491:LEU:HD23	1:A:492:PHE:HD1	8	1.0
(1,2374)	1:A:491:LEU:HD23	1:A:492:PHE:HD2	8	1.0
(1,2374)	1:A:491:LEU:HD11	1:A:492:PHE:HD1	20	0.99
(1,2374)	1:A:491:LEU:HD11	1:A:492:PHE:HD2	20	0.99
(1,2374)	1:A:491:LEU:HD12	1:A:492:PHE:HD1	20	0.99
(1,2374)	1:A:491:LEU:HD12	1:A:492:PHE:HD2	20	0.99
(1,2374)	1:A:491:LEU:HD13	1:A:492:PHE:HD1	20	0.99
(1,2374)	1:A:491:LEU:HD13	1:A:492:PHE:HD2	20	0.99
(1,2374)	1:A:491:LEU:HD21	1:A:492:PHE:HD1	20	0.99

Continued on next page...

Continued from previous page...

Key	Atom-1	Atom-2	Model ID	Violation (Å)
(1,2374)	1:A:491:LEU:HD21	1:A:492:PHE:HD2	20	0.99
(1,2374)	1:A:491:LEU:HD22	1:A:492:PHE:HD1	20	0.99
(1,2374)	1:A:491:LEU:HD22	1:A:492:PHE:HD2	20	0.99
(1,2374)	1:A:491:LEU:HD23	1:A:492:PHE:HD1	20	0.99
(1,2374)	1:A:491:LEU:HD23	1:A:492:PHE:HD2	20	0.99
(1,2374)	1:A:491:LEU:HD11	1:A:492:PHE:HD1	4	0.95
(1,2374)	1:A:491:LEU:HD11	1:A:492:PHE:HD2	4	0.95
(1,2374)	1:A:491:LEU:HD12	1:A:492:PHE:HD1	4	0.95
(1,2374)	1:A:491:LEU:HD12	1:A:492:PHE:HD2	4	0.95
(1,2374)	1:A:491:LEU:HD13	1:A:492:PHE:HD1	4	0.95
(1,2374)	1:A:491:LEU:HD13	1:A:492:PHE:HD2	4	0.95
(1,2374)	1:A:491:LEU:HD21	1:A:492:PHE:HD1	4	0.95
(1,2374)	1:A:491:LEU:HD21	1:A:492:PHE:HD2	4	0.95
(1,2374)	1:A:491:LEU:HD22	1:A:492:PHE:HD1	4	0.95
(1,2374)	1:A:491:LEU:HD22	1:A:492:PHE:HD2	4	0.95
(1,2374)	1:A:491:LEU:HD23	1:A:492:PHE:HD1	4	0.95
(1,2374)	1:A:491:LEU:HD23	1:A:492:PHE:HD2	4	0.95
(1,2353)	1:A:490:VAL:HG11	1:A:491:LEU:HA	6	0.85
(1,2353)	1:A:490:VAL:HG12	1:A:491:LEU:HA	6	0.85
(1,2353)	1:A:490:VAL:HG13	1:A:491:LEU:HA	6	0.85
(1,2353)	1:A:490:VAL:HG21	1:A:491:LEU:HA	6	0.85
(1,2353)	1:A:490:VAL:HG22	1:A:491:LEU:HA	6	0.85
(1,2353)	1:A:490:VAL:HG23	1:A:491:LEU:HA	6	0.85
(1,2372)	1:A:491:LEU:HD11	1:A:492:PHE:HA	17	0.84
(1,2372)	1:A:491:LEU:HD12	1:A:492:PHE:HA	17	0.84
(1,2372)	1:A:491:LEU:HD13	1:A:492:PHE:HA	17	0.84
(1,2372)	1:A:491:LEU:HD21	1:A:492:PHE:HA	17	0.84
(1,2372)	1:A:491:LEU:HD22	1:A:492:PHE:HA	17	0.84
(1,2372)	1:A:491:LEU:HD23	1:A:492:PHE:HA	17	0.84
(1,2353)	1:A:490:VAL:HG11	1:A:491:LEU:HA	16	0.84
(1,2353)	1:A:490:VAL:HG12	1:A:491:LEU:HA	16	0.84
(1,2353)	1:A:490:VAL:HG13	1:A:491:LEU:HA	16	0.84
(1,2353)	1:A:490:VAL:HG21	1:A:491:LEU:HA	16	0.84
(1,2353)	1:A:490:VAL:HG22	1:A:491:LEU:HA	16	0.84
(1,2353)	1:A:490:VAL:HG23	1:A:491:LEU:HA	16	0.84
(1,2353)	1:A:490:VAL:HG11	1:A:491:LEU:HA	2	0.83
(1,2353)	1:A:490:VAL:HG12	1:A:491:LEU:HA	2	0.83
(1,2353)	1:A:490:VAL:HG13	1:A:491:LEU:HA	2	0.83
(1,2353)	1:A:490:VAL:HG21	1:A:491:LEU:HA	2	0.83
(1,2353)	1:A:490:VAL:HG22	1:A:491:LEU:HA	2	0.83
(1,2353)	1:A:490:VAL:HG23	1:A:491:LEU:HA	2	0.83
(1,2353)	1:A:490:VAL:HG11	1:A:491:LEU:HA	8	0.82

10 Dihedral-angle violation analysis

No dihedral-angle restraints found