



Full wwPDB X-ray Structure Validation Report ⓘ

Aug 9, 2020 – 12:45 AM BST

PDB ID : 1OC7
Title : D405N mutant of the CELLOBIOHYDROLASE CEL6A FROM HUMICOLA INSOLENS in complex with methyl-tetrathio-alpha-d-cellopentoside at 1.1 angstrom resolution
Authors : Varrot, A.; Frandsen, T.P.; Von Ossowski, I.; Boyer, V.; Driguez, H.; Schulein, M.; Davies, G.J.
Deposited on : 2003-02-06
Resolution : 1.11 Å(reported)

This is a Full wwPDB X-ray Structure Validation Report for a publicly released PDB entry.

We welcome your comments at validation@mail.wwpdb.org

A user guide is available at

<https://www.wwpdb.org/validation/2017/XrayValidationReportHelp>

with specific help available everywhere you see the ⓘ symbol.

The following versions of software and data (see [references ⓘ](#)) were used in the production of this report:

MolProbity : 4.02b-467
Mogul : 1.8.5 (274361), CSD as541be (2020)
Xtriage (Phenix) : 1.13
EDS : 2.13.1
Percentile statistics : 20191225.v01 (using entries in the PDB archive December 25th 2019)
Refmac : 5.8.0158
CCP4 : 7.0.044 (Gargrove)
Ideal geometry (proteins) : Engh & Huber (2001)
Ideal geometry (DNA, RNA) : Parkinson et al. (1996)
Validation Pipeline (wwPDB-VP) : 2.13.1

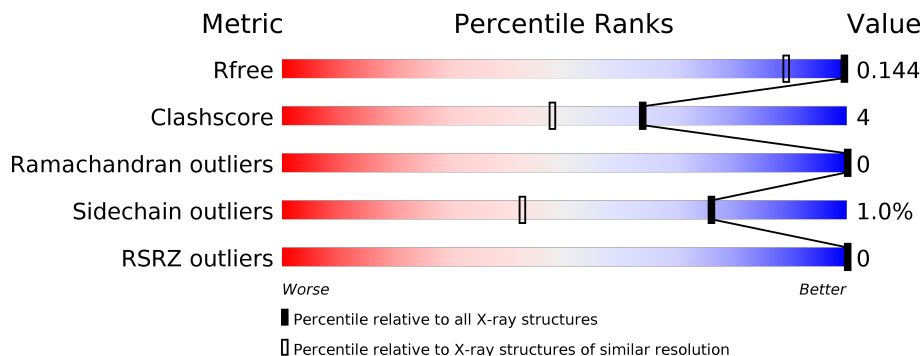
1 Overall quality at a glance

The following experimental techniques were used to determine the structure:

X-RAY DIFFRACTION

The reported resolution of this entry is 1.11 Å.

Percentile scores (ranging between 0-100) for global validation metrics of the entry are shown in the following graphic. The table shows the number of entries on which the scores are based.



Metric	Whole archive (#Entries)	Similar resolution (#Entries, resolution range(Å))
R_{free}	130704	1168 (1.14-1.10)
Clashscore	141614	1205 (1.14-1.10)
Ramachandran outliers	138981	1168 (1.14-1.10)
Sidechain outliers	138945	1165 (1.14-1.10)
RSRZ outliers	127900	1146 (1.14-1.10)

The table below summarises the geometric issues observed across the polymeric chains and their fit to the electron density. The red, orange, yellow and green segments on the lower bar indicate the fraction of residues that contain outliers for ≥ 3 , 2, 1 and 0 types of geometric quality criteria respectively. A grey segment represents the fraction of residues that are not modelled. The numeric value for each fraction is indicated below the corresponding segment, with a dot representing fractions $\leq 5\%$. The upper red bar (where present) indicates the fraction of residues that have poor fit to the electron density. The numeric value is given above the bar.

Mol	Chain	Length	Quality of chain
1	A	364	 92% 8%
2	B	5	 40% 60%

2 Entry composition [i](#)

There are 8 unique types of molecules in this entry. The entry contains 3619 atoms, of which 0 are hydrogens and 0 are deuteriums.

In the tables below, the ZeroOcc column contains the number of atoms modelled with zero occupancy, the AltConf column contains the number of residues with at least one atom in alternate conformation and the Trace column contains the number of residues modelled with at most 2 atoms.

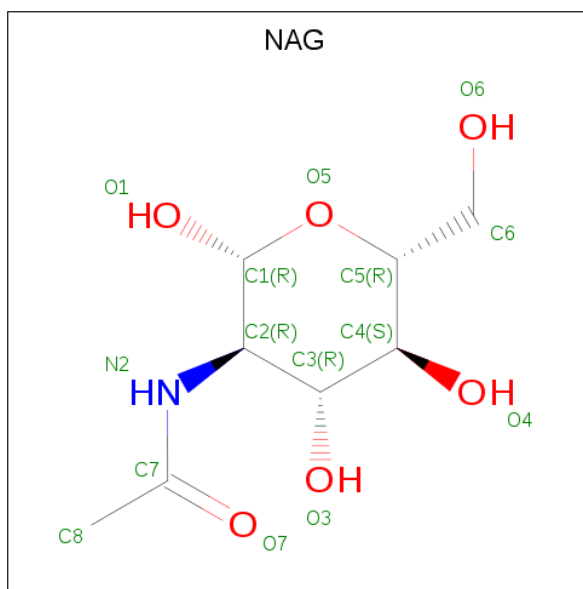
- Molecule 1 is a protein called CELLOBIOHYDROLASE II.

Mol	Chain	Residues	Atoms					ZeroOcc	AltConf	Trace
			Total	C	N	O	S			
1	A	364	2918	1855	506	546	11	0	19	0

- Molecule 2 is an oligosaccharide called beta-D-glucopyranose-(1-4)-4-thio-beta-D-glucopyranose-(1-4)-4-thio-beta-D-glucopyranose-(1-4)-methyl 4-thio-alpha-D-glucopyranoside.

Mol	Chain	Residues	Atoms				ZeroOcc	AltConf	Trace
			Total	C	O	S			
2	B	5	57	31	22	4	0	0	0

- Molecule 3 is 2-acetamido-2-deoxy-beta-D-glucopyranose (three-letter code: NAG) (formula: C₈H₁₅NO₆).

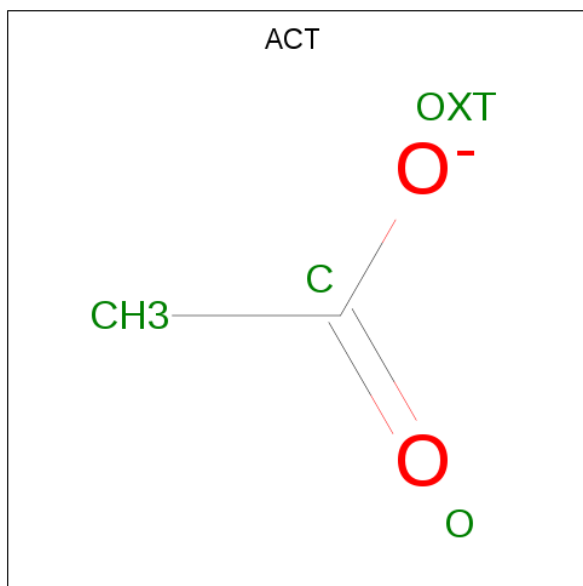


Mol	Chain	Residues	Atoms				ZeroOcc	AltConf
			Total	C	N	O		
3	A	1	14	8	1	5	0	0

- Molecule 4 is MAGNESIUM ION (three-letter code: MG) (formula: Mg).

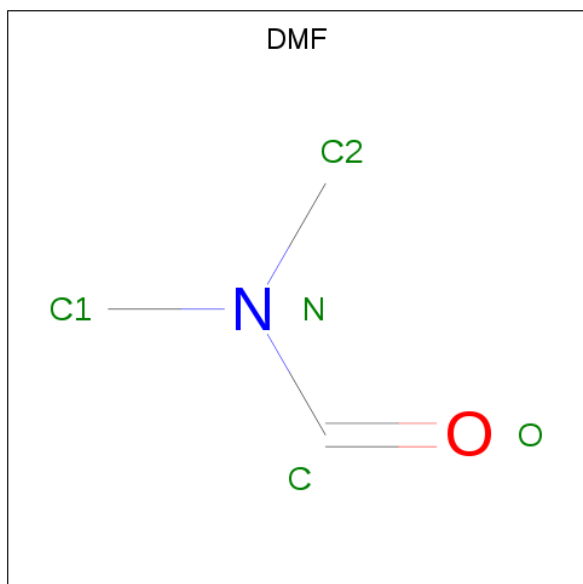
Mol	Chain	Residues	Atoms		ZeroOcc	AltConf
4	A	1	Total	Mg	0	0
			1	1		

- Molecule 5 is ACETATE ION (three-letter code: ACT) (formula: C₂H₃O₂).



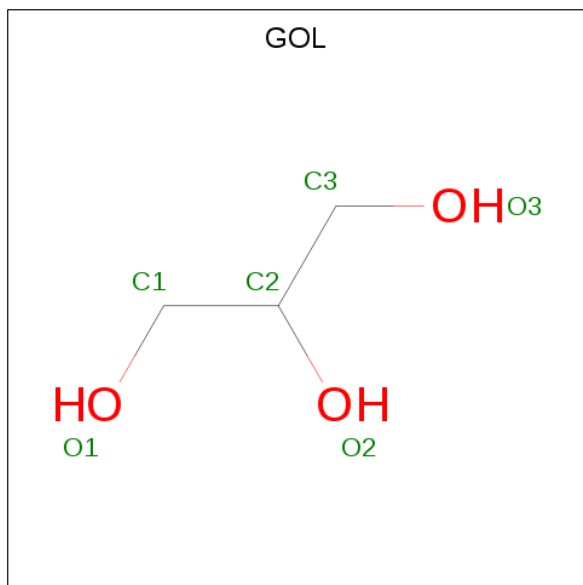
Mol	Chain	Residues	Atoms			ZeroOcc	AltConf
5	A	1	Total	C	O	0	0
			4	2	2		

- Molecule 6 is DIMETHYLFORMAMIDE (three-letter code: DMF) (formula: C₃H₇NO).



Mol	Chain	Residues	Atoms				ZeroOcc	AltConf
6	A	1	Total	C	N	O	0	0
			5	3	1	1		
6	A	1	Total	C	N	O	0	0
			5	3	1	1		

- Molecule 7 is GLYCEROL (three-letter code: GOL) (formula: C₃H₈O₃).



Mol	Chain	Residues	Atoms			ZeroOcc	AltConf
7	A	1	Total	C	O	0	0
			6	3	3		
7	A	1	Total	C	O	0	0
			6	3	3		

- Molecule 8 is water.

Mol	Chain	Residues	Atoms		ZeroOcc	AltConf
8	A	603	Total	O	0	0
			603	603		

3 Residue-property plots

These plots are drawn for all protein, RNA, DNA and oligosaccharide chains in the entry. The first graphic for a chain summarises the proportions of the various outlier classes displayed in the second graphic. The second graphic shows the sequence view annotated by issues in geometry and electron density. Residues are color-coded according to the number of geometric quality criteria for which they contain at least one outlier: green = 0, yellow = 1, orange = 2 and red = 3 or more. A red dot above a residue indicates a poor fit to the electron density ($RSRZ > 2$). Stretches of 2 or more consecutive residues without any outlier are shown as a green connector. Residues present in the sample, but not in the model, are shown in grey.

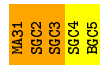
- Molecule 1: CELLOBIOHYDROLASE II

Chain A: 



- Molecule 2: beta-D-glucopyranose-(1-4)-4-thio-beta-D-glucopyranose-(1-4)-4-thio-beta-D-glucopyranose-(1-4)-4-thio-beta-D-glucopyranose-(1-4)-methyl 4-thio-alpha-D-glucopyranoside

Chain B: 



4 Data and refinement statistics

Property	Value	Source
Space group	P 21 21 21	Depositor
Cell constants a, b, c, α , β , γ	57.50Å 60.15Å 97.21Å 90.00° 90.00° 90.00°	Depositor
Resolution (Å)	20.00 – 1.11 15.95 – 1.11	Depositor EDS
% Data completeness (in resolution range)	94.5 (20.00-1.11) 94.5 (15.95-1.11)	Depositor EDS
R_{merge}	0.05	Depositor
R_{sym}	(Not available)	Depositor
$\langle I/\sigma(I) \rangle$ ¹	3.99 (at 1.11Å)	Xtrriage
Refinement program	REFMAC 5.1.06	Depositor
R, R_{free}	0.105 , 0.124 0.127 , 0.144	Depositor DCC
R_{free} test set	12307 reflections (5.03%)	wwPDB-VP
Wilson B-factor (Å ²)	8.3	Xtrriage
Anisotropy	0.280	Xtrriage
Bulk solvent k_{sol} (e/Å ³), B_{sol} (Å ²)	0.41 , 54.9	EDS
L-test for twinning ²	$\langle L \rangle = 0.50$, $\langle L^2 \rangle = 0.34$	Xtrriage
Estimated twinning fraction	0.013 for k,h,-l	Xtrriage
F_o, F_c correlation	0.98	EDS
Total number of atoms	3619	wwPDB-VP
Average B, all atoms (Å ²)	11.0	wwPDB-VP

Xtrriage's analysis on translational NCS is as follows: *The largest off-origin peak in the Patterson function is 5.91% of the height of the origin peak. No significant pseudotranslation is detected.*

¹Intensities estimated from amplitudes.

²Theoretical values of $\langle |L| \rangle$, $\langle L^2 \rangle$ for acentric reflections are 0.5, 0.333 respectively for untwinned datasets, and 0.375, 0.2 for perfectly twinned datasets.

5 Model quality i

5.1 Standard geometry i

Bond lengths and bond angles in the following residue types are not validated in this section: GOL, MG, BGC, NAG, DMF, MA3, ACT, SGC

The Z score for a bond length (or angle) is the number of standard deviations the observed value is removed from the expected value. A bond length (or angle) with $|Z| > 5$ is considered an outlier worth inspection. RMSZ is the root-mean-square of all Z scores of the bond lengths (or angles).

Mol	Chain	Bond lengths		Bond angles	
		RMSZ	# Z >5	RMSZ	# Z >5
1	A	0.83	5/3084 (0.2%)	0.90	11/4216 (0.3%)

Chiral center outliers are detected by calculating the chiral volume of a chiral center and verifying if the center is modelled as a planar moiety or with the opposite hand. A planarity outlier is detected by checking planarity of atoms in a peptide group, atoms in a mainchain group or atoms of a sidechain that are expected to be planar.

Mol	Chain	#Chirality outliers	#Planarity outliers
1	A	0	1

All (5) bond length outliers are listed below:

Mol	Chain	Res	Type	Atoms	Z	Observed(Å)	Ideal(Å)
1	A	293	GLU	CD-OE2	-9.28	1.15	1.25
1	A	422	GLU	CD-OE2	5.57	1.31	1.25
1	A	329	TYR	CD2-CE2	5.46	1.47	1.39
1	A	293	GLU	CA-CB	5.21	1.65	1.53
1	A	293	GLU	CD-OE1	5.00	1.31	1.25

All (11) bond angle outliers are listed below:

Mol	Chain	Res	Type	Atoms	Z	Observed(°)	Ideal(°)
1	A	139	ASP	CB-CG-OD1	7.38	124.95	118.30
1	A	444	ARG	NE-CZ-NH2	-6.63	116.98	120.30
1	A	119	ASP	CB-CG-OD2	5.87	123.58	118.30
1	A	345	ARG	NE-CZ-NH2	-5.73	117.44	120.30
1	A	175	ASP	CB-CG-OD1	5.62	123.36	118.30
1	A	140	ARG	NE-CZ-NH1	5.59	123.09	120.30
1	A	247	TYR	CB-CG-CD1	5.46	124.28	121.00
1	A	106	ARG	NE-CZ-NH1	5.45	123.03	120.30

Continued on next page...

Continued from previous page...

Mol	Chain	Res	Type	Atoms	Z	Observed(°)	Ideal(°)
1	A	145	ASP	CB-CG-OD2	5.42	123.17	118.30
1	A	345	ARG	NE-CZ-NH1	5.29	122.94	120.30
1	A	247	TYR	CB-CG-CD2	-5.01	118.00	121.00

There are no chirality outliers.

All (1) planarity outliers are listed below:

Mol	Chain	Res	Type	Group
1	A	339	ARG	Sidechain

5.2 Too-close contacts [i](#)

In the following table, the Non-H and H(model) columns list the number of non-hydrogen atoms and hydrogen atoms in the chain respectively. The H(added) column lists the number of hydrogen atoms added and optimized by MolProbity. The Clashes column lists the number of clashes within the asymmetric unit, whereas Symm-Clashes lists symmetry related clashes.

Mol	Chain	Non-H	H(model)	H(added)	Clashes	Symm-Clashes
1	A	2918	0	2794	16	0
2	B	57	0	50	10	0
3	A	14	0	13	0	0
4	A	1	0	0	0	0
5	A	4	0	3	0	0
6	A	10	0	14	0	0
7	A	12	0	16	0	0
8	A	603	0	0	17	0
All	All	3619	0	2890	25	0

The all-atom clashscore is defined as the number of clashes found per 1000 atoms (including hydrogen atoms). The all-atom clashscore for this structure is 4.

All (25) close contacts within the same asymmetric unit are listed below, sorted by their clash magnitude.

Atom-1	Atom-2	Interatomic distance (Å)	Clash overlap (Å)
8:A:2598:HOH:O	2:B:2:SGC:C6	1.67	1.26
1:A:382[B]:ARG:NH1	8:A:2470:HOH:O	1.64	1.25
1:A:208[B]:ARG:NH1	8:A:2261:HOH:O	1.73	1.20
8:A:2598:HOH:O	2:B:2:SGC:O5	1.74	1.05
8:A:2602:HOH:O	2:B:1:MA3:O1	1.77	1.00

Continued on next page...

Continued from previous page...

Atom-1	Atom-2	Interatomic distance (Å)	Clash overlap (Å)
8:A:2592:HOH:O	2:B:3:SGC:H61	1.70	0.92
1:A:95[B]:GLU:OE2	8:A:2016:HOH:O	1.90	0.87
8:A:2598:HOH:O	2:B:2:SGC:O6	1.71	0.78
8:A:2596:HOH:O	2:B:3:SGC:O2	2.00	0.78
1:A:287[B]:LEU:HD22	8:A:2335:HOH:O	1.88	0.74
8:A:2592:HOH:O	2:B:3:SGC:S4	2.45	0.70
8:A:2598:HOH:O	2:B:2:SGC:H62	1.53	0.67
1:A:129[B]:VAL:HG21	1:A:443:LEU:HD21	1.77	0.67
8:A:2599:HOH:O	2:B:1:MA3:O3	2.13	0.67
1:A:150[A]:GLN:OE1	8:A:2126:HOH:O	2.13	0.65
1:A:248[A]:ARG:NH2	8:A:2335:HOH:O	2.29	0.64
1:A:136[B]:GLN:HG3	8:A:2086:HOH:O	1.96	0.64
1:A:129[B]:VAL:HG21	1:A:443:LEU:CD2	2.39	0.52
1:A:164:ASN:HD22	1:A:165:PRO:HA	1.76	0.50
1:A:129[B]:VAL:CG2	1:A:443:LEU:HD21	2.43	0.47
1:A:125:ALA:O	1:A:129[B]:VAL:HG23	2.14	0.47
1:A:274:TRP:CZ3	2:B:3:SGC:S4	3.10	0.44
1:A:303:GLY:HA3	1:A:350:GLN:O	2.19	0.42
1:A:287[A]:LEU:HD12	8:A:2335:HOH:O	2.21	0.41

There are no symmetry-related clashes.

5.3 Torsion angles [i](#)

5.3.1 Protein backbone [i](#)

In the following table, the Percentiles column shows the percent Ramachandran outliers of the chain as a percentile score with respect to all X-ray entries followed by that with respect to entries of similar resolution.

The Analysed column shows the number of residues for which the backbone conformation was analysed, and the total number of residues.

Mol	Chain	Analysed	Favoured	Allowed	Outliers	Percentiles
1	A	382/364 (105%)	372 (97%)	10 (3%)	0	100 100

There are no Ramachandran outliers to report.

5.3.2 Protein sidechains [i](#)

In the following table, the Percentiles column shows the percent sidechain outliers of the chain as a percentile score with respect to all X-ray entries followed by that with respect to entries of similar resolution.

The Analysed column shows the number of residues for which the sidechain conformation was analysed, and the total number of residues.

Mol	Chain	Analysed	Rotameric	Outliers	Percentiles
1	A	310/290 (107%)	307 (99%)	3 (1%)	76 42

All (3) residues with a non-rotameric sidechain are listed below:

Mol	Chain	Res	Type
1	A	164	ASN
1	A	231	MET
1	A	435	PHE

Some sidechains can be flipped to improve hydrogen bonding and reduce clashes. All (2) such sidechains are listed below:

Mol	Chain	Res	Type
1	A	164	ASN
1	A	187	ASN

5.3.3 RNA [i](#)

There are no RNA molecules in this entry.

5.4 Non-standard residues in protein, DNA, RNA chains [i](#)

There are no non-standard protein/DNA/RNA residues in this entry.

5.5 Carbohydrates [i](#)

5 monosaccharides are modelled in this entry.

In the following table, the Counts columns list the number of bonds (or angles) for which Mogul statistics could be retrieved, the number of bonds (or angles) that are observed in the model and the number of bonds (or angles) that are defined in the Chemical Component Dictionary. The Link column lists molecule types, if any, to which the group is linked. The Z score for a bond length (or angle) is the number of standard deviations the observed value is removed from the

expected value. A bond length (or angle) with $|Z| > 2$ is considered an outlier worth inspection. RMSZ is the root-mean-square of all Z scores of the bond lengths (or angles).

Mol	Type	Chain	Res	Link	Bond lengths			Bond angles		
					Counts	RMSZ	# Z > 2	Counts	RMSZ	# Z > 2
2	MA3	B	1	2	12,13,13	1.50	2 (16%)	14,18,18	2.30	2 (14%)
2	SGC	B	2	2	10,11,12	1.57	1 (10%)	12,15,17	1.60	3 (25%)
2	SGC	B	3	2	10,11,12	0.59	0	12,15,17	1.67	4 (33%)
2	SGC	B	4	2	10,11,12	1.34	2 (20%)	12,15,17	0.96	0
2	BGC	B	5	2	11,11,12	0.81	0	15,15,17	1.37	2 (13%)

In the following table, the Chirals column lists the number of chiral outliers, the number of chiral centers analysed, the number of these observed in the model and the number defined in the Chemical Component Dictionary. Similar counts are reported in the Torsion and Rings columns. '-' means no outliers of that kind were identified.

Mol	Type	Chain	Res	Link	Chirals	Torsions	Rings
2	MA3	B	1	2	-	0/4/24/24	0/1/1/1
2	SGC	B	2	2	-	0/2/19/22	0/1/1/1
2	SGC	B	3	2	-	0/2/19/22	0/1/1/1
2	SGC	B	4	2	-	0/2/19/22	0/1/1/1
2	BGC	B	5	2	-	0/2/19/22	0/1/1/1

All (5) bond length outliers are listed below:

Mol	Chain	Res	Type	Atoms	Z	Observed(Å)	Ideal(Å)
2	B	2	SGC	C3-C4	4.52	1.57	1.53
2	B	1	MA3	C5-C4	4.31	1.56	1.53
2	B	4	SGC	C5-C4	-2.65	1.51	1.53
2	B	1	MA3	O1-C1	2.36	1.44	1.40
2	B	4	SGC	C3-C4	2.07	1.55	1.53

All (11) bond angle outliers are listed below:

Mol	Chain	Res	Type	Atoms	Z	Observed(°)	Ideal(°)
2	B	1	MA3	O5-C1-O1	-5.93	97.22	110.97
2	B	1	MA3	O5-C1-C2	5.18	121.32	110.35
2	B	3	SGC	O5-C1-C2	-3.42	105.49	110.77
2	B	3	SGC	C1-O5-C5	2.85	116.05	112.19
2	B	2	SGC	O3-C3-C4	2.78	114.82	109.12
2	B	2	SGC	O5-C1-C2	-2.65	106.68	110.77
2	B	3	SGC	O5-C5-C6	2.59	111.27	107.20
2	B	5	BGC	O3-C3-C2	-2.53	105.14	109.99

Continued on next page...

Continued from previous page...

Mol	Chain	Res	Type	Atoms	Z	Observed(°)	Ideal(°)
2	B	5	BGC	O5-C5-C6	-2.20	103.75	107.20
2	B	3	SGC	O2-C2-C3	-2.18	105.77	110.14
2	B	2	SGC	O2-C2-C1	2.05	113.36	109.15

There are no chirality outliers.

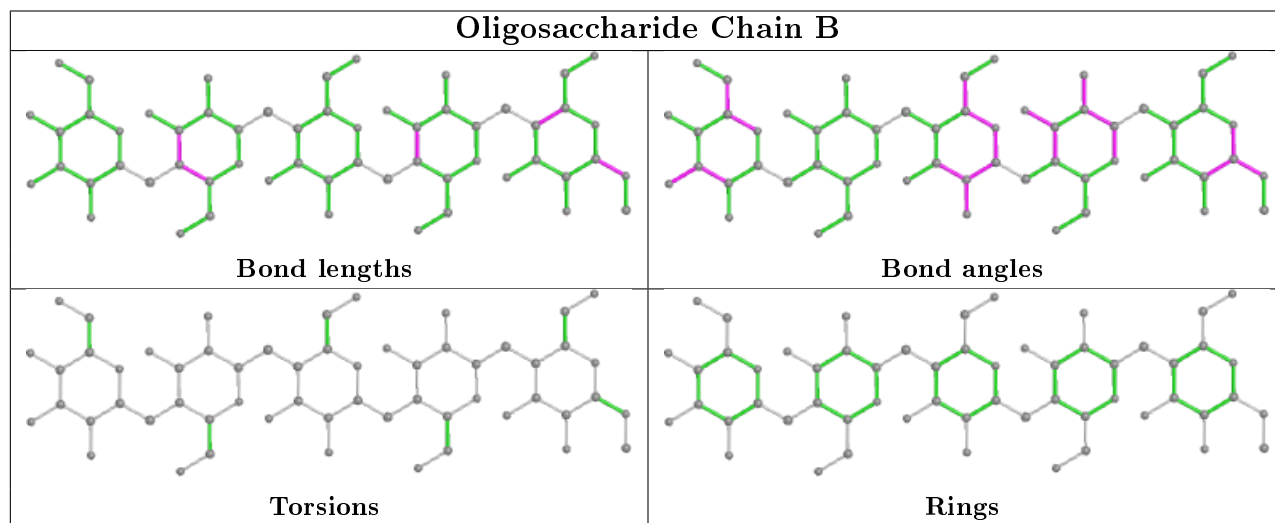
There are no torsion outliers.

There are no ring outliers.

3 monomers are involved in 10 short contacts:

Mol	Chain	Res	Type	Clashes	Symm-Clashes
2	B	2	SGC	4	0
2	B	3	SGC	4	0
2	B	1	MA3	2	0

The following is a two-dimensional graphical depiction of Mogul quality analysis of bond lengths, bond angles, torsion angles, and ring geometry for oligosaccharide.



5.6 Ligand geometry [i](#)

Of 7 ligands modelled in this entry, 1 is monoatomic - leaving 6 for Mogul analysis.

In the following table, the Counts columns list the number of bonds (or angles) for which Mogul statistics could be retrieved, the number of bonds (or angles) that are observed in the model and the number of bonds (or angles) that are defined in the Chemical Component Dictionary. The Link column lists molecule types, if any, to which the group is linked. The Z score for a bond length (or angle) is the number of standard deviations the observed value is removed from the expected value. A bond length (or angle) with $|Z| > 2$ is considered an outlier worth inspection. RMSZ is the root-mean-square of all Z scores of the bond lengths (or angles).

Mol	Type	Chain	Res	Link	Bond lengths			Bond angles		
					Counts	RMSZ	# Z > 2	Counts	RMSZ	# Z > 2
5	ACT	A	502	-	1,3,3	0.16	0	0,3,3	0.00	-
7	GOL	A	506	-	5,5,5	0.71	0	5,5,5	0.38	0
7	GOL	A	505	-	5,5,5	0.90	0	5,5,5	2.24	2 (40%)
6	DMF	A	503	-	4,4,4	0.45	0	4,4,4	0.33	0
3	NAG	A	500	1	14,14,15	0.61	0	17,19,21	0.90	1 (5%)
6	DMF	A	504	-	4,4,4	0.28	0	4,4,4	0.55	0

In the following table, the Chirals column lists the number of chiral outliers, the number of chiral centers analysed, the number of these observed in the model and the number defined in the Chemical Component Dictionary. Similar counts are reported in the Torsion and Rings columns. '-' means no outliers of that kind were identified.

Mol	Type	Chain	Res	Link	Chirals	Torsions	Rings
7	GOL	A	505	-	-	3/4/4/4	-
6	DMF	A	503	-	-	0/2/2/2	-
3	NAG	A	500	1	-	0/6/23/26	0/1/1/1
6	DMF	A	504	-	-	0/2/2/2	-
7	GOL	A	506	-	-	0/4/4/4	-

There are no bond length outliers.

All (3) bond angle outliers are listed below:

Mol	Chain	Res	Type	Atoms	Z	Observed(°)	Ideal(°)
7	A	505	GOL	O3-C3-C2	4.17	130.21	110.20
3	A	500	NAG	C2-N2-C7	2.74	126.81	122.90
7	A	505	GOL	O2-C2-C3	2.01	117.97	109.12

There are no chirality outliers.

All (3) torsion outliers are listed below:

Mol	Chain	Res	Type	Atoms
7	A	505	GOL	C1-C2-C3-O3
7	A	505	GOL	O2-C2-C3-O3
7	A	505	GOL	O1-C1-C2-O2

There are no ring outliers.

No monomer is involved in short contacts.

5.7 Other polymers [i](#)

There are no such residues in this entry.

5.8 Polymer linkage issues [i](#)

There are no chain breaks in this entry.

6 Fit of model and data [i](#)

6.1 Protein, DNA and RNA chains [i](#)

In the following table, the column labelled ‘#RSRZ> 2’ contains the number (and percentage) of RSRZ outliers, followed by percent RSRZ outliers for the chain as percentile scores relative to all X-ray entries and entries of similar resolution. The OWAB column contains the minimum, median, 95th percentile and maximum values of the occupancy-weighted average B-factor per residue. The column labelled ‘Q< 0.9’ lists the number of (and percentage) of residues with an average occupancy less than 0.9.

Mol	Chain	Analysed	<RSRZ>	#RSRZ>2	OWAB(Å ²)	Q<0.9
1	A	364/364 (100%)	-0.36	0 100 100	6, 8, 15, 20	0

There are no RSRZ outliers to report.

6.2 Non-standard residues in protein, DNA, RNA chains [i](#)

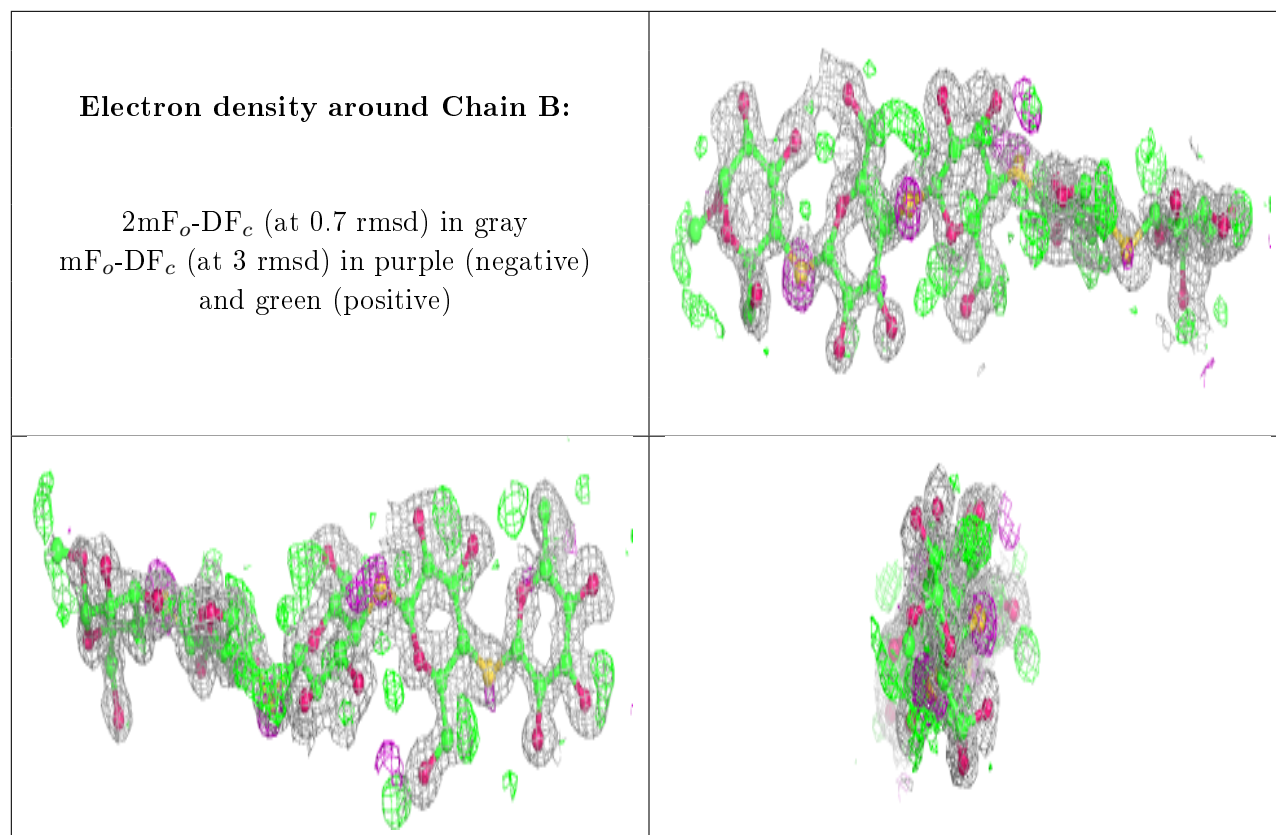
There are no non-standard protein/DNA/RNA residues in this entry.

6.3 Carbohydrates [i](#)

In the following table, the Atoms column lists the number of modelled atoms in the group and the number defined in the chemical component dictionary. The B-factors column lists the minimum, median, 95th percentile and maximum values of B factors of atoms in the group. The column labelled ‘Q< 0.9’ lists the number of atoms with occupancy less than 0.9.

Mol	Type	Chain	Res	Atoms	RSCC	RSR	B-factors(Å ²)	Q<0.9
2	MA3	B	1	13/13	0.88	0.17	15,20,24,24	13
2	SGC	B	2	11/12	0.89	0.17	13,14,16,16	11
2	BGC	B	5	11/12	0.93	0.10	12,14,15,15	11
2	SGC	B	3	11/12	0.94	0.10	10,13,16,17	11
2	SGC	B	4	11/12	0.95	0.10	10,12,14,15	11

The following is a graphical depiction of the model fit to experimental electron density for oligosaccharide. Each fit is shown from different orientation to approximate a three-dimensional view.



6.4 Ligands [i](#)

In the following table, the Atoms column lists the number of modelled atoms in the group and the number defined in the chemical component dictionary. The B-factors column lists the minimum, median, 95th percentile and maximum values of B factors of atoms in the group. The column labelled 'Q< 0.9' lists the number of atoms with occupancy less than 0.9.

Mol	Type	Chain	Res	Atoms	RSCC	RSR	B-factors(Å ²)	Q<0.9
7	GOL	A	505	6/6	0.84	0.17	14,18,21,25	0
7	GOL	A	506	6/6	0.93	0.14	14,16,17,19	0
6	DMF	A	504	5/5	0.94	0.16	13,15,16,16	0
5	ACT	A	502	4/4	0.98	0.08	11,12,14,14	0
3	NAG	A	500	14/15	0.99	0.04	7,8,9,9	0
6	DMF	A	503	5/5	0.99	0.05	10,10,13,14	0
4	MG	A	501	1/1	1.00	0.11	11,11,11,11	0

6.5 Other polymers [i](#)

There are no such residues in this entry.