



# Full wwPDB X-ray Structure Validation Report ⓘ

Mar 3, 2024 – 11:50 PM EST

PDB ID : 6OCO  
Title : HUMAN PI3KDELTA IN COMPLEX WITH COMPOUND 6  
Authors : Lesburg, C.A.; Augustin, M.A.  
Deposited on : 2019-03-25  
Resolution : 2.58 Å(reported)

This is a Full wwPDB X-ray Structure Validation Report for a publicly released PDB entry.

We welcome your comments at [validation@mail.wwpdb.org](mailto:validation@mail.wwpdb.org)

A user guide is available at

<https://www.wwpdb.org/validation/2017/XrayValidationReportHelp>

with specific help available everywhere you see the ⓘ symbol.

The types of validation reports are described at

<http://www.wwpdb.org/validation/2017/FAQs#types>.

---

The following versions of software and data (see [references ⓘ](#)) were used in the production of this report:

MolProbity : 4.02b-467  
Mogul : 1.8.5 (274361), CSD as541be (2020)  
Xtriage (Phenix) : 1.13  
EDS : 2.36  
buster-report : 1.1.7 (2018)  
Percentile statistics : 20191225.v01 (using entries in the PDB archive December 25th 2019)  
Refmac : 5.8.0158  
CCP4 : 7.0.044 (Gargrove)  
Ideal geometry (proteins) : Engh & Huber (2001)  
Ideal geometry (DNA, RNA) : Parkinson et al. (1996)  
Validation Pipeline (wwPDB-VP) : 2.36

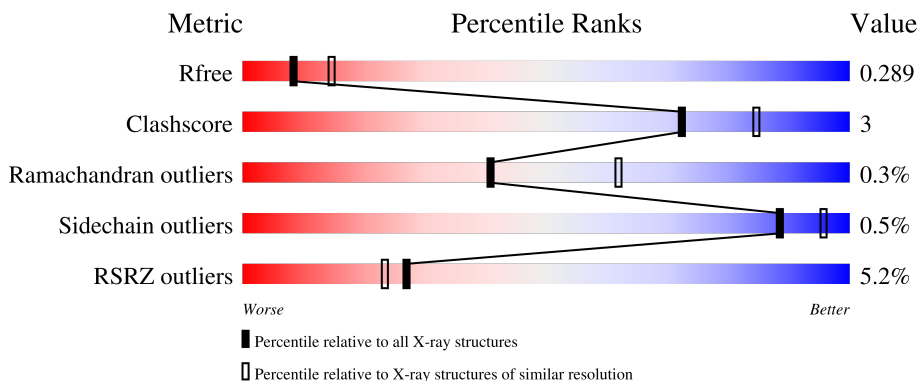
# 1 Overall quality at a glance

The following experimental techniques were used to determine the structure:

*X-RAY DIFFRACTION*

The reported resolution of this entry is 2.58 Å.

Percentile scores (ranging between 0-100) for global validation metrics of the entry are shown in the following graphic. The table shows the number of entries on which the scores are based.



Metric	Whole archive (#Entries)	Similar resolution (#Entries, resolution range(Å))
$R_{free}$	130704	3676 (2.60-2.56)
Clashscore	141614	4049 (2.60-2.56)
Ramachandran outliers	138981	3979 (2.60-2.56)
Sidechain outliers	138945	3979 (2.60-2.56)
RSRZ outliers	127900	3614 (2.60-2.56)

The table below summarises the geometric issues observed across the polymeric chains and their fit to the electron density. The red, orange, yellow and green segments of the lower bar indicate the fraction of residues that contain outliers for  $\geq 3$ , 2, 1 and 0 types of geometric quality criteria respectively. A grey segment represents the fraction of residues that are not modelled. The numeric value for each fraction is indicated below the corresponding segment, with a dot representing fractions  $\leq 5\%$ . The upper red bar (where present) indicates the fraction of residues that have poor fit to the electron density. The numeric value is given above the bar.

Mol	Chain	Length	Quality of chain
1	A	1015	 5% 83% 9% 8%
2	B	170	 5% 94% 6%

## 2 Entry composition [i](#)

There are 4 unique types of molecules in this entry. The entry contains 9029 atoms, of which 0 are hydrogens and 0 are deuteriums.

In the tables below, the ZeroOcc column contains the number of atoms modelled with zero occupancy, the AltConf column contains the number of residues with at least one atom in alternate conformation and the Trace column contains the number of residues modelled with at most 2 atoms.

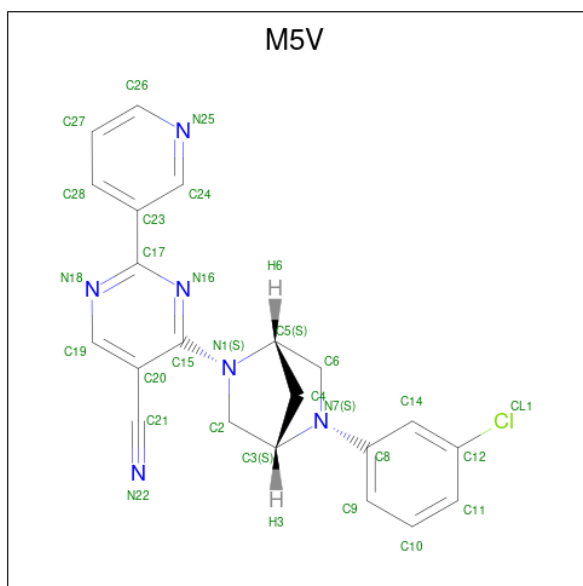
- Molecule 1 is a protein called Phosphatidylinositol 4,5-bisphosphate 3-kinase catalytic subunit delta isoform.

Mol	Chain	Residues	Atoms					ZeroOcc	AltConf	Trace
			Total	C	N	O	S			
1	A	930	7514	4809	1283	1369	53	295	0	0

- Molecule 2 is a protein called Phosphatidylinositol 3-kinase regulatory subunit alpha.

Mol	Chain	Residues	Atoms					ZeroOcc	AltConf	Trace
			Total	C	N	O	S			
2	B	170	1473	915	267	286	5	85	0	0

- Molecule 3 is 4-[(1S,4S)-5-(3-chlorophenyl)-2,5-diazabicyclo[2.2.1]heptan-2-yl]-2-(pyridin-3-yl)pyrimidine-5-carbonitrile (three-letter code: M5V) (formula: C<sub>21</sub>H<sub>17</sub>ClN<sub>6</sub>) (labeled as "Ligand of Interest" by depositor).



Mol	Chain	Residues	Atoms				ZeroOcc	AltConf
			Total	C	Cl	N		
3	A	1	28	21	1	6	0	0

- Molecule 4 is water.

Mol	Chain	Residues	Atoms	ZeroOcc	AltConf
4	A	11	Total O 11 11	0	0
4	B	3	Total O 3 3	0	0



## 4 Data and refinement statistics

Property	Value	Source
Space group	P 21 21 21	Depositor
Cell constants a, b, c, $\alpha$ , $\beta$ , $\gamma$	91.02Å 108.98Å 142.39Å 90.00° 90.00° 90.00°	Depositor
Resolution (Å)	86.54 – 2.58 44.42 – 2.58	Depositor EDS
% Data completeness (in resolution range)	94.5 (86.54-2.58) 94.5 (44.42-2.58)	Depositor EDS
$R_{merge}$	0.06	Depositor
$R_{sym}$	(Not available)	Depositor
$\langle I/\sigma(I) \rangle$ <sup>1</sup>	1.95 (at 2.58Å)	Xtrriage
Refinement program	REFMAC 5.5.0109	Depositor
R, $R_{free}$	0.259 , 0.296 0.248 , 0.289	Depositor DCC
$R_{free}$ test set	874 reflections (2.04%)	wwPDB-VP
Wilson B-factor (Å <sup>2</sup> )	72.9	Xtrriage
Anisotropy	0.386	Xtrriage
Bulk solvent $k_{sol}$ (e/Å <sup>3</sup> ), $B_{sol}$ (Å <sup>2</sup> )	0.28 , 49.7	EDS
L-test for twinning <sup>2</sup>	$\langle  L  \rangle = 0.49$ , $\langle L^2 \rangle = 0.32$	Xtrriage
Estimated twinning fraction	No twinning to report.	Xtrriage
$F_o, F_c$ correlation	0.94	EDS
Total number of atoms	9029	wwPDB-VP
Average B, all atoms (Å <sup>2</sup> )	75.0	wwPDB-VP

Xtrriage's analysis on translational NCS is as follows: *The largest off-origin peak in the Patterson function is 3.54% of the height of the origin peak. No significant pseudotranslation is detected.*

<sup>1</sup>Intensities estimated from amplitudes.

<sup>2</sup>Theoretical values of  $\langle |L| \rangle$ ,  $\langle L^2 \rangle$  for acentric reflections are 0.5, 0.333 respectively for untwinned datasets, and 0.375, 0.2 for perfectly twinned datasets.

## 5 Model quality [i](#)

### 5.1 Standard geometry [i](#)

Bond lengths and bond angles in the following residue types are not validated in this section: M5V

The Z score for a bond length (or angle) is the number of standard deviations the observed value is removed from the expected value. A bond length (or angle) with  $|Z| > 5$  is considered an outlier worth inspection. RMSZ is the root-mean-square of all Z scores of the bond lengths (or angles).

Mol	Chain	Bond lengths		Bond angles	
		RMSZ	# Z  >5	RMSZ	# Z  >5
1	A	0.44	0/7677	0.57	0/10375
2	B	0.44	0/1493	0.60	1/1992 (0.1%)
All	All	0.44	0/9170	0.57	1/12367 (0.0%)

There are no bond length outliers.

All (1) bond angle outliers are listed below:

Mol	Chain	Res	Type	Atoms	Z	Observed(°)	Ideal(°)
2	B	542	ARG	CD-NE-CZ	6.33	132.46	123.60

There are no chirality outliers.

There are no planarity outliers.

### 5.2 Too-close contacts [i](#)

In the following table, the Non-H and H(model) columns list the number of non-hydrogen atoms and hydrogen atoms in the chain respectively. The H(added) column lists the number of hydrogen atoms added and optimized by MolProbity. The Clashes column lists the number of clashes within the asymmetric unit, whereas Symm-Clashes lists symmetry-related clashes.

Mol	Chain	Non-H	H(model)	H(added)	Clashes	Symm-Clashes
1	A	7514	0	7506	53	0
2	B	1473	0	1462	5	0
3	A	28	0	0	1	0
4	A	11	0	0	0	0
4	B	3	0	0	0	0
All	All	9029	0	8968	57	0

The all-atom clashscore is defined as the number of clashes found per 1000 atoms (including

hydrogen atoms). The all-atom clashscore for this structure is 3.

All (57) close contacts within the same asymmetric unit are listed below, sorted by their clash magnitude.

Atom-1	Atom-2	Interatomic distance (Å)	Clash overlap (Å)
1:A:26:LEU:HD23	1:A:101:LEU:HD12	1.75	0.69
1:A:396:ALA:HB2	1:A:418:ILE:HD11	1.80	0.63
1:A:135:GLU:HG2	1:A:625:LEU:HD12	1.80	0.63
1:A:319:LEU:HD11	1:A:483:VAL:HG11	1.79	0.63
1:A:247:HIS:CD2	1:A:740:LEU:HD21	2.36	0.61
1:A:583:LEU:HD11	1:A:600:LEU:HD11	1.83	0.60
1:A:507:GLU:HB3	1:A:534:LEU:HD11	1.85	0.59
1:A:834:ILE:HD11	1:A:907:LEU:HD11	1.83	0.59
1:A:801:TRP:CE3	1:A:808:LEU:HD12	2.40	0.55
1:A:855:LEU:HD23	1:A:941:VAL:HG21	1.88	0.55
1:A:608:LEU:HD23	1:A:643:ILE:HD13	1.89	0.54
1:A:423:LEU:HD13	1:A:439:LEU:HD21	1.89	0.54
1:A:25:LEU:HD22	2:B:497:GLN:HG2	1.90	0.53
1:A:800:LEU:HD22	1:A:970:HIS:ND1	2.25	0.52
1:A:331:SER:HB2	1:A:470:ALA:HB3	1.92	0.51
1:A:390:LEU:HB2	1:A:425:LEU:HD21	1.92	0.51
1:A:614:GLN:HE21	1:A:981:MET:CG	2.24	0.51
1:A:597:ILE:HD13	1:A:600:LEU:HD12	1.93	0.51
1:A:610:GLN:HG2	1:A:796:LEU:HD13	1.93	0.50
1:A:393:ALA:HB2	1:A:453:LEU:HD23	1.92	0.50
1:A:329:GLN:HG3	1:A:370:VAL:HG22	1.94	0.49
1:A:347:LEU:HD22	1:A:425:LEU:HD11	1.95	0.49
1:A:456:THR:HG22	1:A:585:PHE:CE2	2.49	0.48
2:B:437:VAL:HG13	2:B:580:TYR:CZ	2.48	0.48
1:A:800:LEU:HD22	1:A:970:HIS:CE1	2.48	0.48
1:A:333:VAL:HG11	1:A:341:LEU:HD11	1.95	0.47
1:A:387:MET:HE3	1:A:590:CYS:HB3	1.96	0.47
2:B:449:LEU:HD22	2:B:584:LEU:HD12	1.97	0.47
1:A:528:LYS:HG2	1:A:552:VAL:HG12	1.97	0.46
1:A:587:PHE:HB3	1:A:592:VAL:HG11	1.97	0.46
1:A:613:LEU:HD23	1:A:792:GLN:OE1	2.16	0.45
1:A:358:VAL:CG2	1:A:375:LEU:HD22	2.47	0.45
1:A:418:ILE:HG23	2:B:564:ASN:ND2	2.30	0.45
1:A:576:VAL:HG11	1:A:603:LEU:HD21	1.97	0.45
1:A:117:ILE:CG2	1:A:125:LEU:HD21	2.46	0.45
1:A:621:TYR:CZ	1:A:983:ALA:HB2	2.53	0.44
1:A:855:LEU:HD23	1:A:941:VAL:CG2	2.46	0.44
1:A:333:VAL:HG11	1:A:341:LEU:CD1	2.47	0.44

*Continued on next page...*



Continued from previous page...

Atom-1	Atom-2	Interatomic distance (Å)	Clash overlap (Å)
1:A:396:ALA:HB3	1:A:416:CYS:HB3	1.98	0.43
1:A:24:PHE:CG	1:A:49:LEU:HD13	2.53	0.43
1:A:809:ARG:HB3	1:A:906:GLN:HE21	1.83	0.43
1:A:212:VAL:HG13	1:A:213:PRO:HD2	2.00	0.43
1:A:192:VAL:HG23	1:A:272:PRO:HB2	2.01	0.43
1:A:790:THR:HG21	1:A:912:PHE:CG	2.54	0.43
1:A:393:ALA:CB	1:A:453:LEU:HD23	2.49	0.43
2:B:484:ILE:HG13	2:B:545:LEU:HD23	2.00	0.43
3:A:1101:M5V:C2	3:A:1101:M5V:C21	2.97	0.42
1:A:479:ALA:HB1	1:A:480:PRO:HD2	2.01	0.42
1:A:167:PHE:CE1	1:A:247:HIS:HB3	2.54	0.41
1:A:384:LEU:HD13	1:A:425:LEU:HD13	2.02	0.41
1:A:549:LEU:HG	1:A:564:MET:HE3	2.02	0.41
1:A:999:LYS:HA	1:A:1004:LEU:HD12	2.01	0.41
1:A:74:ASN:OD1	1:A:76:THR:HG22	2.20	0.41
1:A:49:LEU:HD21	1:A:101:LEU:HD11	2.03	0.41
1:A:423:LEU:HD13	1:A:439:LEU:CD2	2.51	0.41
1:A:460:ARG:HD2	1:A:662:LEU:HD23	2.03	0.41
1:A:549:LEU:HA	1:A:552:VAL:HG22	2.03	0.40

There are no symmetry-related clashes.

## 5.3 Torsion angles [i](#)

### 5.3.1 Protein backbone [i](#)

In the following table, the Percentiles column shows the percent Ramachandran outliers of the chain as a percentile score with respect to all X-ray entries followed by that with respect to entries of similar resolution.

The Analysed column shows the number of residues for which the backbone conformation was analysed, and the total number of residues.

Mol	Chain	Analysed	Favoured	Allowed	Outliers	Percentiles
1	A	912/1015 (90%)	884 (97%)	26 (3%)	2 (0%)	47 69
2	B	168/170 (99%)	165 (98%)	2 (1%)	1 (1%)	25 45
All	All	1080/1185 (91%)	1049 (97%)	28 (3%)	3 (0%)	41 62

All (3) Ramachandran outliers are listed below:

Mol	Chain	Res	Type
1	A	54	GLN
1	A	287	ASP
2	B	434	ASP

### 5.3.2 Protein sidechains [i](#)

In the following table, the Percentiles column shows the percent sidechain outliers of the chain as a percentile score with respect to all X-ray entries followed by that with respect to entries of similar resolution.

The Analysed column shows the number of residues for which the sidechain conformation was analysed, and the total number of residues.

Mol	Chain	Analysed	Rotameric	Outliers	Percentiles	
1	A	830/900 (92%)	826 (100%)	4 (0%)	88	96
2	B	161/161 (100%)	160 (99%)	1 (1%)	86	94
All	All	991/1061 (93%)	986 (100%)	5 (0%)	88	96

All (5) residues with a non-rotameric sidechain are listed below:

Mol	Chain	Res	Type
1	A	50	TRP
1	A	54	GLN
1	A	696	ASN
1	A	915	PHE
2	B	431	TYR

Sometimes sidechains can be flipped to improve hydrogen bonding and reduce clashes. All (7) such sidechains are listed below:

Mol	Chain	Res	Type
1	A	75	GLN
1	A	247	HIS
1	A	351	ASN
1	A	696	ASN
1	A	943	GLN
2	B	457	GLN
2	B	591	GLN

### 5.3.3 RNA [i](#)

There are no RNA molecules in this entry.

## 5.4 Non-standard residues in protein, DNA, RNA chains [i](#)

There are no non-standard protein/DNA/RNA residues in this entry.

## 5.5 Carbohydrates [i](#)

There are no monosaccharides in this entry.

## 5.6 Ligand geometry [i](#)

1 ligand is modelled in this entry.

In the following table, the Counts columns list the number of bonds (or angles) for which Mogul statistics could be retrieved, the number of bonds (or angles) that are observed in the model and the number of bonds (or angles) that are defined in the Chemical Component Dictionary. The Link column lists molecule types, if any, to which the group is linked. The Z score for a bond length (or angle) is the number of standard deviations the observed value is removed from the expected value. A bond length (or angle) with  $|Z| > 2$  is considered an outlier worth inspection. RMSZ is the root-mean-square of all Z scores of the bond lengths (or angles).

Mol	Type	Chain	Res	Link	Bond lengths			Bond angles		
					Counts	RMSZ	# Z  > 2	Counts	RMSZ	# Z  > 2
3	M5V	A	1101	-	31,32,32	1.14	3 (9%)	34,46,46	1.85	7 (20%)

In the following table, the Chirals column lists the number of chiral outliers, the number of chiral centers analysed, the number of these observed in the model and the number defined in the Chemical Component Dictionary. Similar counts are reported in the Torsion and Rings columns. '-' means no outliers of that kind were identified.

Mol	Type	Chain	Res	Link	Chirals	Torsions	Rings
3	M5V	A	1101	-	-	2/12/34/34	0/6/5/5

All (3) bond length outliers are listed below:

Mol	Chain	Res	Type	Atoms	Z	Observed(Å)	Ideal(Å)
3	A	1101	M5V	C4-C3	2.87	1.57	1.53
3	A	1101	M5V	C4-C5	2.71	1.57	1.53
3	A	1101	M5V	C5-N1	2.49	1.50	1.47

All (7) bond angle outliers are listed below:

Mol	Chain	Res	Type	Atoms	Z	Observed(°)	Ideal(°)
3	A	1101	M5V	C4-C3-N7	-4.74	96.11	102.20

*Continued on next page...*

*Continued from previous page...*

Mol	Chain	Res	Type	Atoms	Z	Observed(°)	Ideal(°)
3	A	1101	M5V	N18-C17-N16	-4.44	120.90	125.25
3	A	1101	M5V	C4-C5-N1	-3.51	97.68	102.20
3	A	1101	M5V	C19-N18-C17	3.38	120.69	116.22
3	A	1101	M5V	C15-N16-C17	3.21	123.38	116.35
3	A	1101	M5V	C26-N25-C24	2.77	121.64	116.85
3	A	1101	M5V	C20-C19-N18	-2.03	120.38	123.42

There are no chirality outliers.

All (2) torsion outliers are listed below:

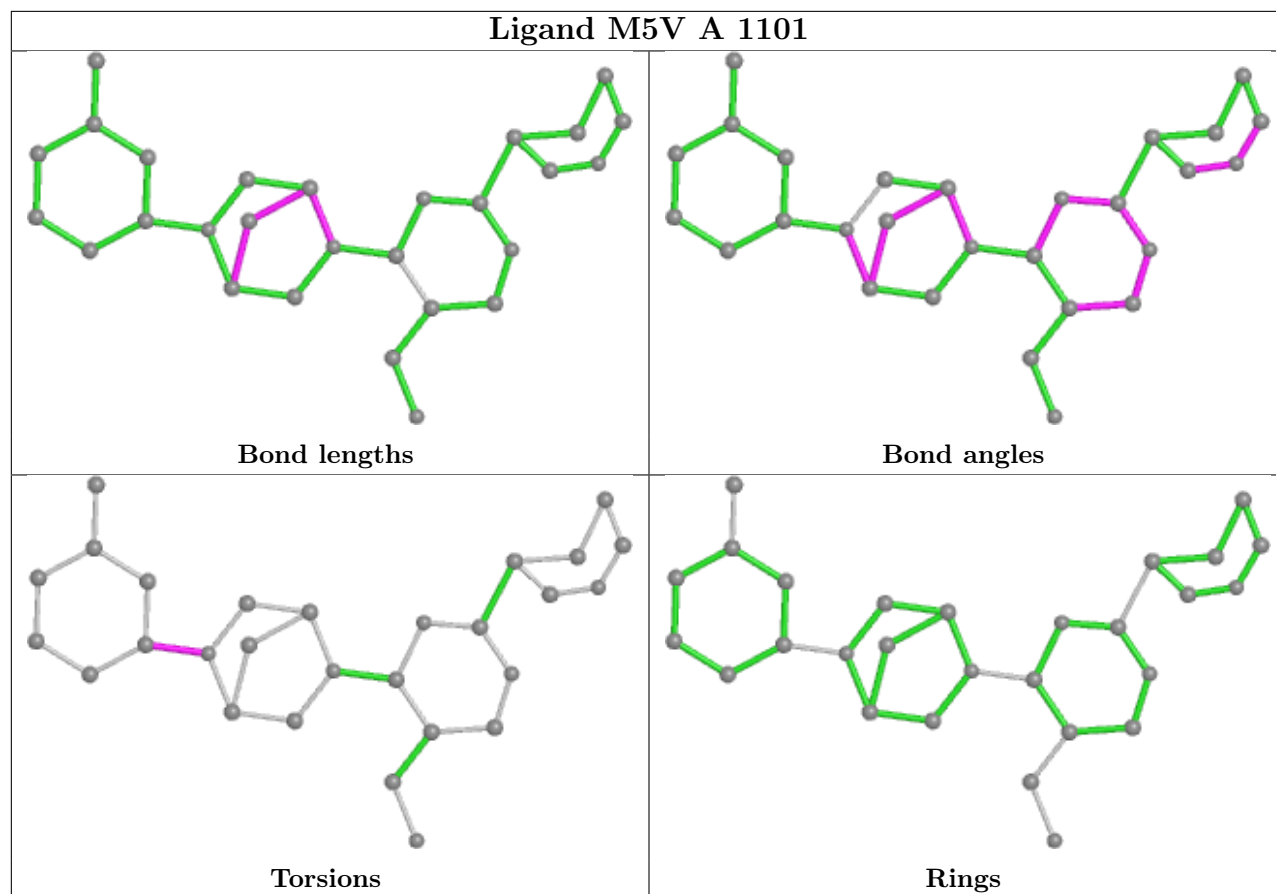
Mol	Chain	Res	Type	Atoms
3	A	1101	M5V	C9-C8-N7-C6
3	A	1101	M5V	C14-C8-N7-C6

There are no ring outliers.

1 monomer is involved in 1 short contact:

Mol	Chain	Res	Type	Clashes	Symm-Clashes
3	A	1101	M5V	1	0

The following is a two-dimensional graphical depiction of Mogul quality analysis of bond lengths, bond angles, torsion angles, and ring geometry for all instances of the Ligand of Interest. In addition, ligands with molecular weight > 250 and outliers as shown on the validation Tables will also be included. For torsion angles, if less than 5% of the Mogul distribution of torsion angles is within 10 degrees of the torsion angle in question, then that torsion angle is considered an outlier. Any bond that is central to one or more torsion angles identified as an outlier by Mogul will be highlighted in the graph. For rings, the root-mean-square deviation (RMSD) between the ring in question and similar rings identified by Mogul is calculated over all ring torsion angles. If the average RMSD is greater than 60 degrees and the minimal RMSD between the ring in question and any Mogul-identified rings is also greater than 60 degrees, then that ring is considered an outlier. The outliers are highlighted in purple. The color gray indicates Mogul did not find sufficient equivalents in the CSD to analyse the geometry.



## 5.7 Other polymers [\(i\)](#)

There are no such residues in this entry.

## 5.8 Polymer linkage issues [\(i\)](#)

There are no chain breaks in this entry.

## 6 Fit of model and data

### 6.1 Protein, DNA and RNA chains

In the following table, the column labelled ‘#RSRZ > 2’ contains the number (and percentage) of RSRZ outliers, followed by percent RSRZ outliers for the chain as percentile scores relative to all X-ray entries and entries of similar resolution. The OWAB column contains the minimum, median, 95<sup>th</sup> percentile and maximum values of the occupancy-weighted average B-factor per residue. The column labelled ‘Q < 0.9’ lists the number of (and percentage) of residues with an average occupancy less than 0.9.

Mol	Chain	Analysed	<RSRZ>	#RSRZ>2	OWAB(Å <sup>2</sup> )	Q<0.9
1	A	930/1015 (91%)	0.38	49 (5%) 26 22	35, 73, 112, 135	120 (12%)
2	B	170/170 (100%)	0.25	8 (4%) 31 28	53, 72, 112, 126	34 (20%)
All	All	1100/1185 (92%)	0.36	57 (5%) 27 23	35, 72, 112, 135	154 (14%)

All (57) RSRZ outliers are listed below:

Mol	Chain	Res	Type	RSRZ
1	A	770	SER	5.6
1	A	198	GLY	5.0
1	A	203	PHE	4.7
1	A	271	THR	4.3
1	A	504	THR	4.1
1	A	315	SER	3.9
2	B	600	ASN	3.9
1	A	225	ALA	3.6
1	A	481	HIS	3.5
1	A	234	GLU	3.5
1	A	919	PHE	3.5
1	A	399	GLU	3.3
1	A	401	ALA	3.3
1	A	483	VAL	3.2
1	A	480	PRO	3.2
1	A	316	LEU	3.2
1	A	402	LYS	3.2
2	B	438	LYS	3.1
1	A	768	ALA	3.1
1	A	432	LEU	3.1
1	A	398	ILE	3.0
2	B	431	TYR	3.0
1	A	854	ALA	3.0
1	A	209	THR	2.8

*Continued on next page...*

*Continued from previous page...*

Mol	Chain	Res	Type	RSRZ
1	A	766	GLU	2.8
1	A	360	SER	2.7
1	A	484	TYR	2.7
1	A	400	LYS	2.7
1	A	108	ARG	2.7
1	A	397	VAL	2.6
1	A	236	PRO	2.5
1	A	381	ILE	2.5
1	A	1031	VAL	2.5
1	A	342	VAL	2.5
1	A	269	GLY	2.5
2	B	470	TYR	2.4
1	A	277	VAL	2.4
1	A	524	TYR	2.4
1	A	1014	HIS	2.4
1	A	566	TYR	2.3
1	A	723	ALA	2.3
2	B	436	VAL	2.3
1	A	282	ILE	2.3
1	A	270	LEU	2.2
1	A	817	PRO	2.2
1	A	359	SER	2.2
2	B	521	ILE	2.2
1	A	338	ARG	2.1
1	A	267	HIS	2.1
1	A	1005	GLY	2.1
1	A	944	GLN	2.1
1	A	220	ALA	2.1
2	B	508	TYR	2.1
2	B	432	GLN	2.0
1	A	223	LYS	2.0
1	A	158	GLY	2.0
1	A	191	LEU	2.0

## 6.2 Non-standard residues in protein, DNA, RNA chains [i](#)

There are no non-standard protein/DNA/RNA residues in this entry.

## 6.3 Carbohydrates [i](#)

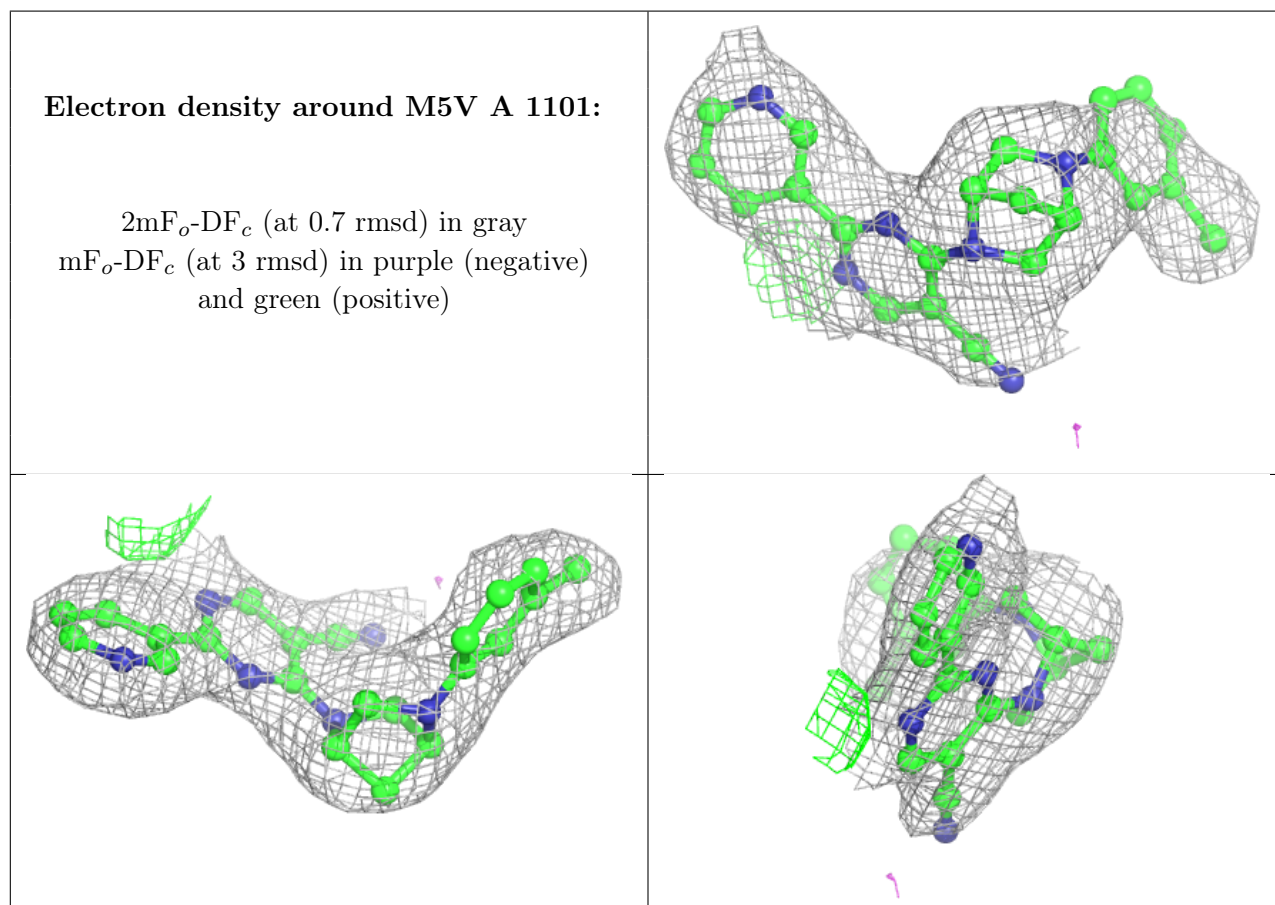
There are no monosaccharides in this entry.

## 6.4 Ligands [i](#)

In the following table, the Atoms column lists the number of modelled atoms in the group and the number defined in the chemical component dictionary. The B-factors column lists the minimum, median, 95<sup>th</sup> percentile and maximum values of B factors of atoms in the group. The column labelled 'Q< 0.9' lists the number of atoms with occupancy less than 0.9.

Mol	Type	Chain	Res	Atoms	RSCC	RSR	B-factors(Å <sup>2</sup> )	Q<0.9
3	M5V	A	1101	28/28	0.88	0.18	53,76,91,94	0

The following is a graphical depiction of the model fit to experimental electron density of all instances of the Ligand of Interest. In addition, ligands with molecular weight > 250 and outliers as shown on the geometry validation Tables will also be included. Each fit is shown from different orientation to approximate a three-dimensional view.



## 6.5 Other polymers [i](#)

There are no such residues in this entry.