



Full wwPDB X-ray Structure Validation Report ⓘ

Nov 29, 2018 – 07:39 AM EST

PDB ID : 5OF0
Title : X-ray structure of human glutamate carboxypeptidase II (GCPII), the E424M inactive mutant, in complex with a inhibitor CFBzOG
Authors : Novakova, Z.; Motlova, L.; Barinka, C.
Deposited on : 2017-07-10
Resolution : 1.48 Å(reported)

This is a Full wwPDB X-ray Structure Validation Report for a publicly released PDB entry.

We welcome your comments at validation@mail.wwpdb.org

A user guide is available at

<https://www.wwpdb.org/validation/2017/XrayValidationReportHelp>

with specific help available everywhere you see the ⓘ symbol.

The following versions of software and data (see [references ⓘ](#)) were used in the production of this report:

MolProbity : 4.02b-467
Mogul : 1.7.3 (157068), CSD as539be (2018)
Xtriage (Phenix) : 1.13
EDS : rb-20031633
Percentile statistics : 20171227.v01 (using entries in the PDB archive December 27th 2017)
Refmac : 5.8.0158
CCP4 : 7.0 (Gargrove)
Ideal geometry (proteins) : Engh & Huber (2001)
Ideal geometry (DNA, RNA) : Parkinson et al. (1996)
Validation Pipeline (wwPDB-VP) : rb-20031633

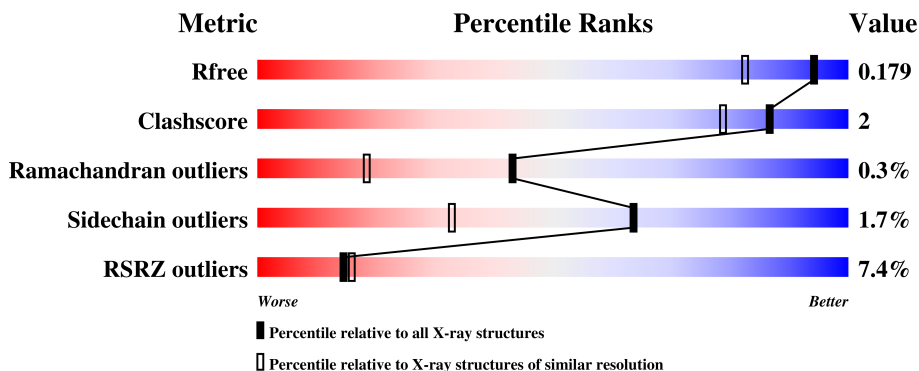
1 Overall quality at a glance

The following experimental techniques were used to determine the structure:

X-RAY DIFFRACTION

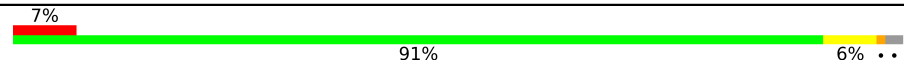
The reported resolution of this entry is 1.48 Å.

Percentile scores (ranging between 0-100) for global validation metrics of the entry are shown in the following graphic. The table shows the number of entries on which the scores are based.



Metric	Whole archive (#Entries)	Similar resolution (#Entries, resolution range(Å))
R_{free}	111664	3964 (1.50-1.46)
Clashscore	122126	4202 (1.50-1.46)
Ramachandran outliers	120053	4117 (1.50-1.46)
Sidechain outliers	120020	4115 (1.50-1.46)
RSRZ outliers	108989	3889 (1.50-1.46)

The table below summarises the geometric issues observed across the polymeric chains and their fit to the electron density. The red, orange, yellow and green segments on the lower bar indicate the fraction of residues that contain outliers for ≥ 3 , 2, 1 and 0 types of geometric quality criteria. A grey segment represents the fraction of residues that are not modelled. The numeric value for each fraction is indicated below the corresponding segment, with a dot representing fractions $\leq 5\%$. The upper red bar (where present) indicates the fraction of residues that have poor fit to the electron density. The numeric value is given above the bar.

Mol	Chain	Length	Quality of chain
1	A	707	

The following table lists non-polymeric compounds, carbohydrate monomers and non-standard residues in protein, DNA, RNA chains that are outliers for geometric or electron-density-fit criteria:

Mol	Type	Chain	Res	Chirality	Geometry	Clashes	Electron density
2	NAG	A	804	-	-	-	X

2 Entry composition [i](#)

There are 9 unique types of molecules in this entry. The entry contains 6629 atoms, of which 0 are hydrogens and 0 are deuteriums.

In the tables below, the ZeroOcc column contains the number of atoms modelled with zero occupancy, the AltConf column contains the number of residues with at least one atom in alternate conformation and the Trace column contains the number of residues modelled with at most 2 atoms.

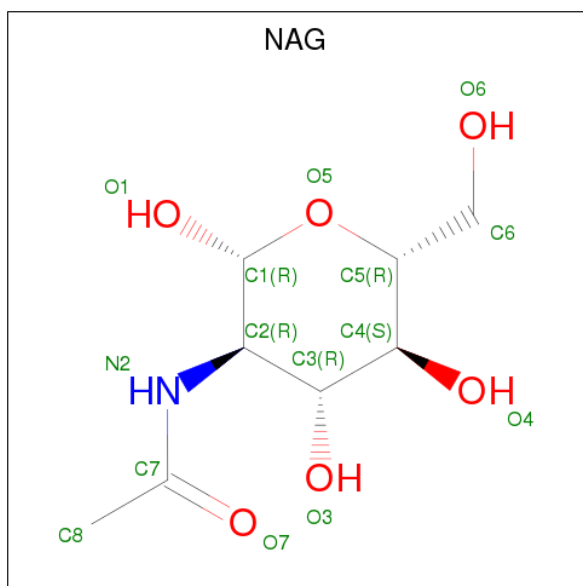
- Molecule 1 is a protein called Glutamate carboxypeptidase 2.

Mol	Chain	Residues	Atoms					ZeroOcc	AltConf	Trace
			Total	C	N	O	S			
1	A	692	5757	3694	967	1073	23	0	48	0

There is a discrepancy between the modelled and reference sequences:

Chain	Residue	Modelled	Actual	Comment	Reference
A	424	MET	GLU	engineered mutation	UNP Q04609

- Molecule 2 is N-ACETYL-D-GLUCOSAMINE (three-letter code: NAG) (formula: C₈H₁₅NO₆).



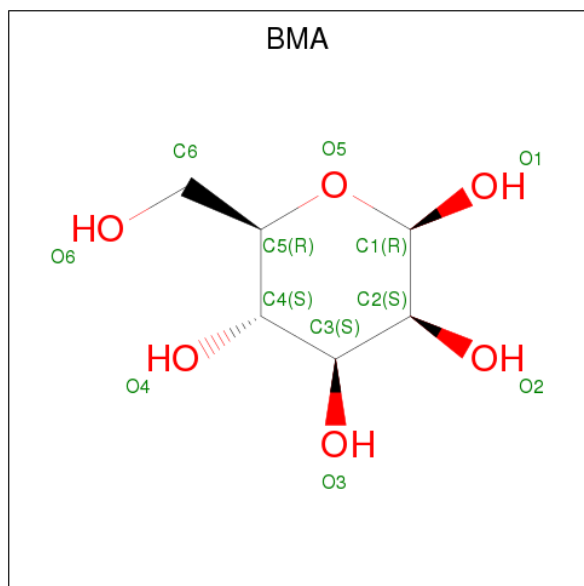
Mol	Chain	Residues	Atoms				ZeroOcc	AltConf
			Total	C	N	O		
2	A	1	14	8	1	5	0	0
2	A	1	14	8	1	5	0	0
2	A	1	14	8	1	5	0	0

Continued on next page...

Continued from previous page...

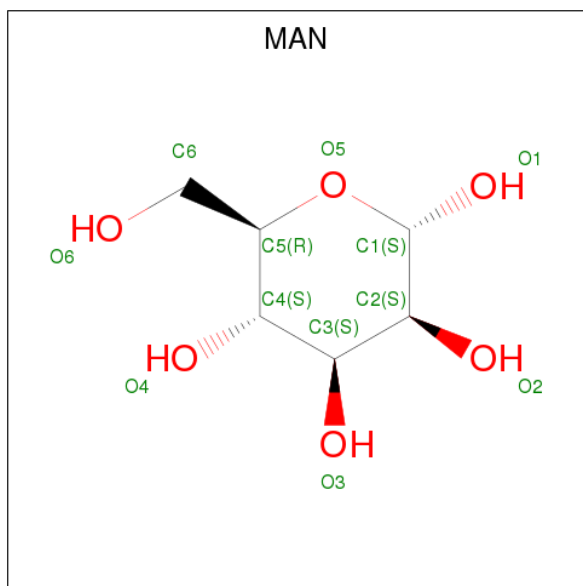
Mol	Chain	Residues	Atoms				ZeroOcc	AltConf
			Total	C	N	O		
2	A	1	Total	C	N	O	0	0
			14	8	1	5		
2	A	1	Total	C	N	O	0	0
			14	8	1	5		
2	A	1	Total	C	N	O	0	0
			14	8	1	5		
2	A	1	Total	C	N	O	0	0
			14	8	1	5		
2	A	1	Total	C	N	O	0	0
			14	8	1	5		
2	A	1	Total	C	N	O	0	0
			14	8	1	5		
2	A	1	Total	C	N	O	0	0
			14	8	1	5		

- Molecule 3 is BETA-D-MANNOSE (three-letter code: BMA) (formula: C₆H₁₂O₆).



Mol	Chain	Residues	Atoms			ZeroOcc	AltConf
			Total	C	O		
3	A	1	Total	C	O	0	0
			11	6	5		
3	A	1	Total	C	O	0	0
			11	6	5		

- Molecule 4 is ALPHA-D-MANNOSE (three-letter code: MAN) (formula: C₆H₁₂O₆).



Mol	Chain	Residues	Atoms	ZeroOcc	AltConf
4	A	1	Total C O 11 6 5	0	0
4	A	1	Total C O 11 6 5	0	0
4	A	1	Total C O 11 6 5	0	0

- Molecule 5 is ZINC ION (three-letter code: ZN) (formula: Zn).

Mol	Chain	Residues	Atoms	ZeroOcc	AltConf
5	A	2	Total Zn 2 2	0	0

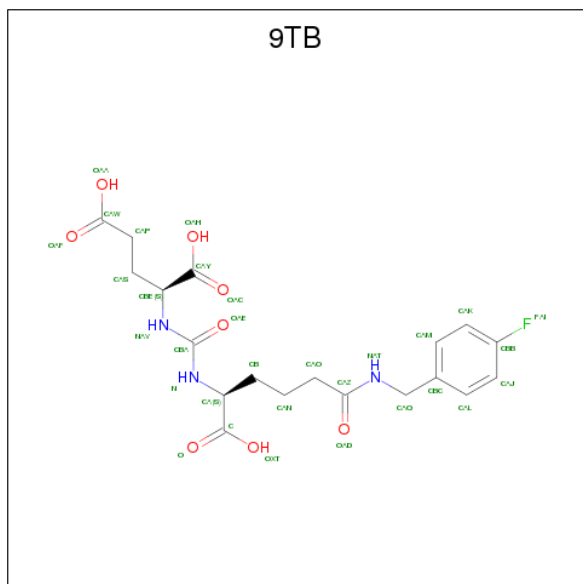
- Molecule 6 is CALCIUM ION (three-letter code: CA) (formula: Ca).

Mol	Chain	Residues	Atoms	ZeroOcc	AltConf
6	A	1	Total Ca 1 1	0	0

- Molecule 7 is CHLORIDE ION (three-letter code: CL) (formula: Cl).

Mol	Chain	Residues	Atoms	ZeroOcc	AltConf
7	A	1	Total Cl 1 1	0	0

- Molecule 8 is (2 {S})-2-[[[(2 {S})-6-[(4-fluorophenyl)methylamino]-1-oxidanyl-1,6-bis(oxidanilidene)hexan-2-yl]carbamoylamino]pentanedioic acid (three-letter code: 9TB) (formula: C₁₉H₂₄FN₃O₈).



Mol	Chain	Residues	Atoms					ZeroOcc	AltConf
			Total	C	F	N	O		
8	A	1	31	19	1	3	8	0	0

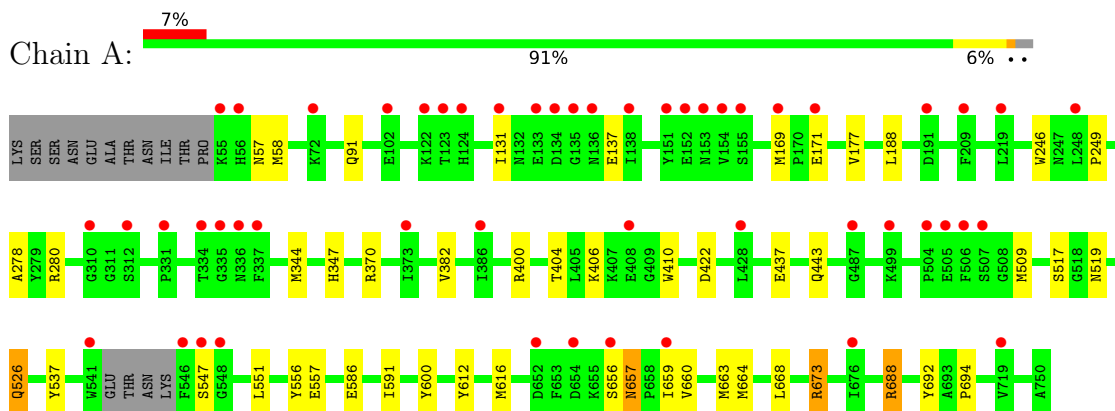
- Molecule 9 is water.

Mol	Chain	Residues	Atoms		ZeroOcc	AltConf
			Total	O		
9	A	614	614	614	0	1

3 Residue-property plots [i](#)

These plots are drawn for all protein, RNA and DNA chains in the entry. The first graphic for a chain summarises the proportions of the various outlier classes displayed in the second graphic. The second graphic shows the sequence view annotated by issues in geometry and electron density. Residues are color-coded according to the number of geometric quality criteria for which they contain at least one outlier: green = 0, yellow = 1, orange = 2 and red = 3 or more. A red dot above a residue indicates a poor fit to the electron density ($RSRZ > 2$). Stretches of 2 or more consecutive residues without any outlier are shown as a green connector. Residues present in the sample, but not in the model, are shown in grey.

- Molecule 1: Glutamate carboxypeptidase 2



4 Data and refinement statistics

Property	Value	Source
Space group	I 2 2 2	Depositor
Cell constants a, b, c, α , β , γ	101.47Å 130.46Å 159.57Å 90.00° 90.00° 90.00°	Depositor
Resolution (Å)	49.25 – 1.48 49.25 – 1.48	Depositor EDS
% Data completeness (in resolution range)	98.8 (49.25-1.48) 98.8 (49.25-1.48)	Depositor EDS
R_{merge}	0.04	Depositor
R_{sym}	(Not available)	Depositor
$\langle I/\sigma(I) \rangle$ ¹	1.43 (at 1.48Å)	Xtrriage
Refinement program	REFMAC 5.8.0158	Depositor
R, R_{free}	0.157 , 0.172 0.164 , 0.179	Depositor DCC
R_{free} test set	3382 reflections (1.95%)	wwPDB-VP
Wilson B-factor (Å ²)	20.3	Xtrriage
Anisotropy	0.596	Xtrriage
Bulk solvent k_{sol} (e/Å ³), B_{sol} (Å ²)	0.35 , 55.1	EDS
L-test for twinning ²	$\langle L \rangle = 0.49$, $\langle L^2 \rangle = 0.32$	Xtrriage
Estimated twinning fraction	No twinning to report.	Xtrriage
F_o, F_c correlation	0.97	EDS
Total number of atoms	6629	wwPDB-VP
Average B, all atoms (Å ²)	39.0	wwPDB-VP

Xtrriage's analysis on translational NCS is as follows: *The largest off-origin peak in the Patterson function is 4.04% of the height of the origin peak. No significant pseudotranslation is detected.*

¹Intensities estimated from amplitudes.

²Theoretical values of $\langle |L| \rangle$, $\langle L^2 \rangle$ for acentric reflections are 0.5, 0.333 respectively for untwinned datasets, and 0.375, 0.2 for perfectly twinned datasets.

5 Model quality [i](#)

5.1 Standard geometry [i](#)

Bond lengths and bond angles in the following residue types are not validated in this section: ZN, BMA, NAG, CL, CA, 9TB, MAN

The Z score for a bond length (or angle) is the number of standard deviations the observed value is removed from the expected value. A bond length (or angle) with $|Z| > 5$ is considered an outlier worth inspection. RMSZ is the root-mean-square of all Z scores of the bond lengths (or angles).

Mol	Chain	Bond lengths		Bond angles	
		RMSZ	# Z >5	RMSZ	# Z >5
1	A	0.68	1/6042 (0.0%)	0.84	6/8179 (0.1%)

All (1) bond length outliers are listed below:

Mol	Chain	Res	Type	Atoms	Z	Observed(Å)	Ideal(Å)
1	A	557	GLU	CD-OE2	-5.29	1.19	1.25

All (6) bond angle outliers are listed below:

Mol	Chain	Res	Type	Atoms	Z	Observed(°)	Ideal(°)
1	A	370	ARG	NE-CZ-NH1	7.95	124.28	120.30
1	A	673	ARG	NE-CZ-NH1	7.22	123.91	120.30
1	A	673	ARG	NE-CZ-NH2	-6.89	116.86	120.30
1	A	688[A]	ARG	NE-CZ-NH2	-5.70	117.45	120.30
1	A	688[B]	ARG	NE-CZ-NH2	-5.70	117.45	120.30
1	A	422	ASP	CB-CG-OD1	5.15	122.94	118.30

There are no chirality outliers.

There are no planarity outliers.

5.2 Too-close contacts [i](#)

In the following table, the Non-H and H(model) columns list the number of non-hydrogen atoms and hydrogen atoms in the chain respectively. The H(added) column lists the number of hydrogen atoms added and optimized by MolProbity. The Clashes column lists the number of clashes within the asymmetric unit, whereas Symm-Clashes lists symmetry related clashes.

Mol	Chain	Non-H	H(model)	H(added)	Clashes	Symm-Clashes
1	A	5757	0	5626	27	0

Continued on next page...

Continued from previous page...

Mol	Chain	Non-H	H(model)	H(added)	Clashes	Symm-Clashes
2	A	168	0	149	1	0
3	A	22	0	17	0	0
4	A	33	0	30	0	0
5	A	2	0	0	0	0
6	A	1	0	0	0	0
7	A	1	0	0	0	0
8	A	31	0	0	0	0
9	A	614	0	0	7	0
All	All	6629	0	5822	27	0

The all-atom clashscore is defined as the number of clashes found per 1000 atoms (including hydrogen atoms). The all-atom clashscore for this structure is 2.

All (27) close contacts within the same asymmetric unit are listed below, sorted by their clash magnitude.

Atom-1	Atom-2	Interatomic distance (Å)	Clash overlap (Å)
1:A:660[A]:VAL:O	1:A:664[A]:MET:HG2	1.26	1.35
1:A:656[B]:SER:O	1:A:657[B]:ASN:HB2	1.86	0.76
1:A:660[A]:VAL:O	1:A:664[A]:MET:CG	2.22	0.69
1:A:400:ARG:O	1:A:404[B]:THR:HG23	1.96	0.66
1:A:437:GLU:OE2	9:A:901:HOH:O	2.14	0.66
1:A:91[B]:GLN:NE2	9:A:904:HOH:O	2.35	0.60
1:A:526[A]:GLN:NE2	1:A:692:TYR:O	2.37	0.58
1:A:688[B]:ARG:NH1	9:A:902:HOH:O	2.26	0.57
1:A:612:TYR:CZ	1:A:616:MET:HG3	2.46	0.51
1:A:517:SER:HB2	1:A:694:PRO:HG3	1.92	0.51
1:A:659[B]:ILE:O	1:A:663[B]:MET:HG3	2.10	0.51
1:A:443[B]:GLN:NE2	9:A:908:HOH:O	2.43	0.50
1:A:278:ALA:HB3	1:A:280[B]:ARG:NH1	2.28	0.48
1:A:58:MET:HE1	1:A:586[A]:GLU:HG2	1.95	0.48
1:A:131:ILE:HD11	1:A:171:GLU:HG3	1.96	0.47
1:A:58:MET:CE	1:A:586[A]:GLU:HG2	2.46	0.46
1:A:131:ILE:HG22	1:A:137:GLU:HG2	2.00	0.44
1:A:169:MET:HA	1:A:344:MET:O	2.19	0.43
1:A:177:VAL:HG12	1:A:188:LEU:HD11	2.02	0.41
1:A:347:HIS:HE1	9:A:1408:HOH:O	2.03	0.41
1:A:659[B]:ILE:HD13	1:A:659[B]:ILE:HA	1.85	0.41
1:A:551:LEU:HD22	1:A:556:TYR:HB2	2.03	0.41
1:A:246:TRP:CD1	2:A:808:NAG:H83	2.56	0.41
1:A:58:MET:HE1	1:A:586[A]:GLU:CG	2.52	0.40
1:A:664[A]:MET:HE1	9:A:1256:HOH:O	2.21	0.40

Continued on next page...

Continued from previous page...

Atom-1	Atom-2	Interatomic distance (Å)	Clash overlap (Å)
1:A:406:LYS:HA	1:A:410:TRP:O	2.22	0.40
1:A:591[A]:ILE:HD12	9:A:1508:HOH:O	2.22	0.40

There are no symmetry-related clashes.

5.3 Torsion angles [i](#)

5.3.1 Protein backbone [i](#)

In the following table, the Percentiles column shows the percent Ramachandran outliers of the chain as a percentile score with respect to all X-ray entries followed by that with respect to entries of similar resolution.

The Analysed column shows the number of residues for which the backbone conformation was analysed, and the total number of residues.

Mol	Chain	Analysed	Favoured	Allowed	Outliers	Percentiles
1	A	736/707 (104%)	715 (97%)	18 (2%)	3 (0%)	36 13

All (3) Ramachandran outliers are listed below:

Mol	Chain	Res	Type
1	A	382	VAL
1	A	657[A]	ASN
1	A	657[B]	ASN

5.3.2 Protein sidechains [i](#)

In the following table, the Percentiles column shows the percent sidechain outliers of the chain as a percentile score with respect to all X-ray entries followed by that with respect to entries of similar resolution.

The Analysed column shows the number of residues for which the sidechain conformation was analysed, and the total number of residues.

Mol	Chain	Analysed	Rotameric	Outliers	Percentiles
1	A	637/603 (106%)	625 (98%)	12 (2%)	60 27

All (12) residues with a non-rotameric sidechain are listed below:

Mol	Chain	Res	Type
1	A	57	ASN
1	A	249	PRO
1	A	509	MET
1	A	519	ASN
1	A	526[A]	GLN
1	A	526[B]	GLN
1	A	537	TYR
1	A	547	SER
1	A	600	TYR
1	A	668[A]	LEU
1	A	668[B]	LEU
1	A	673	ARG

Some sidechains can be flipped to improve hydrogen bonding and reduce clashes. All (3) such sidechains are listed below:

Mol	Chain	Res	Type
1	A	57	ASN
1	A	124	HIS
1	A	345	HIS

5.3.3 RNA [i](#)

There are no RNA molecules in this entry.

5.4 Non-standard residues in protein, DNA, RNA chains [i](#)

There are no non-standard protein/DNA/RNA residues in this entry.

5.5 Carbohydrates [i](#)

There are no carbohydrates in this entry.

5.6 Ligand geometry [i](#)

Of 22 ligands modelled in this entry, 4 are monoatomic - leaving 18 for Mogul analysis.

In the following table, the Counts columns list the number of bonds (or angles) for which Mogul statistics could be retrieved, the number of bonds (or angles) that are observed in the model and the number of bonds (or angles) that are defined in the Chemical Component Dictionary. The Link column lists molecule types, if any, to which the group is linked. The Z score for a bond

length (or angle) is the number of standard deviations the observed value is removed from the expected value. A bond length (or angle) with $|Z| > 2$ is considered an outlier worth inspection. RMSZ is the root-mean-square of all Z scores of the bond lengths (or angles).

Mol	Type	Chain	Res	Link	Bond lengths			Bond angles		
					Counts	RMSZ	# Z > 2	Counts	RMSZ	# Z > 2
2	NAG	A	801	1,2	14,14,15	0.39	0	17,19,21	1.02	1 (5%)
2	NAG	A	802	2	14,14,15	0.62	0	17,19,21	1.37	1 (5%)
2	NAG	A	803	1,2	14,14,15	0.73	0	17,19,21	1.59	2 (11%)
2	NAG	A	804	2	14,14,15	0.52	0	17,19,21	0.92	1 (5%)
2	NAG	A	805	1,2	14,14,15	0.62	0	17,19,21	1.16	1 (5%)
2	NAG	A	806	2	14,14,15	0.41	0	17,19,21	0.75	0
2	NAG	A	807	1	14,14,15	0.54	0	17,19,21	2.37	5 (29%)
2	NAG	A	808	1	14,14,15	0.74	0	17,19,21	1.18	1 (5%)
2	NAG	A	809	1,2	14,14,15	0.44	0	17,19,21	1.00	1 (5%)
2	NAG	A	810	3,2	14,14,15	0.35	0	17,19,21	1.37	2 (11%)
3	BMA	A	811	2,4	11,11,12	0.54	0	15,15,17	1.50	1 (6%)
4	MAN	A	812	3	11,11,12	0.45	0	15,15,17	0.94	1 (6%)
2	NAG	A	813	1,2	14,14,15	0.55	0	17,19,21	1.30	1 (5%)
2	NAG	A	814	3,2	14,14,15	0.56	0	17,19,21	1.52	3 (17%)
3	BMA	A	815	2,4	11,11,12	0.53	0	15,15,17	0.80	0
4	MAN	A	816	3	11,11,12	0.41	0	15,15,17	1.10	1 (6%)
4	MAN	A	817	3	11,11,12	0.57	0	15,15,17	1.01	1 (6%)
8	9TB	A	822	-	22,31,31	2.15	3 (13%)	28,40,40	1.99	12 (42%)

In the following table, the Chirals column lists the number of chiral outliers, the number of chiral centers analysed, the number of these observed in the model and the number defined in the Chemical Component Dictionary. Similar counts are reported in the Torsion and Rings columns. '-' means no outliers of that kind were identified.

Mol	Type	Chain	Res	Link	Chirals	Torsions	Rings
2	NAG	A	801	1,2	-	0/6/23/26	0/1/1/1
2	NAG	A	802	2	-	0/6/23/26	0/1/1/1
2	NAG	A	803	1,2	-	0/6/23/26	0/1/1/1
2	NAG	A	804	2	-	0/6/23/26	0/1/1/1
2	NAG	A	805	1,2	-	0/6/23/26	0/1/1/1
2	NAG	A	806	2	-	0/6/23/26	0/1/1/1
2	NAG	A	807	1	-	0/6/23/26	0/1/1/1
2	NAG	A	808	1	-	0/6/23/26	0/1/1/1
2	NAG	A	809	1,2	-	0/6/23/26	0/1/1/1
2	NAG	A	810	3,2	-	0/6/23/26	0/1/1/1

Continued on next page...

Continued from previous page...

Mol	Type	Chain	Res	Link	Chirals	Torsions	Rings
3	BMA	A	811	2,4	-	0/2/19/22	0/1/1/1
4	MAN	A	812	3	-	0/2/19/22	0/1/1/1
2	NAG	A	813	1,2	-	0/6/23/26	0/1/1/1
2	NAG	A	814	3,2	-	0/6/23/26	0/1/1/1
3	BMA	A	815	2,4	-	0/2/19/22	0/1/1/1
4	MAN	A	816	3	-	0/2/19/22	0/1/1/1
4	MAN	A	817	3	-	0/2/19/22	0/1/1/1
8	9TB	A	822	-	-	0/22/32/32	0/1/1/1

All (3) bond length outliers are listed below:

Mol	Chain	Res	Type	Atoms	Z	Observed(Å)	Ideal(Å)
8	A	822	9TB	CAQ-NAT	-9.18	1.27	1.46
8	A	822	9TB	CBA-N	-2.07	1.31	1.35
8	A	822	9TB	CAS-CBE	2.04	1.56	1.53

All (35) bond angle outliers are listed below:

Mol	Chain	Res	Type	Atoms	Z	Observed(°)	Ideal(°)
2	A	813	NAG	O5-C1-C2	-3.96	106.05	111.52
8	A	822	9TB	CAJ-CBB-CAK	-3.93	117.50	122.86
2	A	803	NAG	C1-C2-N2	-3.90	103.82	110.49
8	A	822	9TB	OAD-CAZ-CAO	-3.65	115.22	122.00
2	A	807	NAG	O5-C1-C2	-3.65	106.48	111.52
2	A	805	NAG	O5-C1-C2	-3.23	107.06	111.52
8	A	822	9TB	OAE-CBA-NAV	-2.87	117.38	122.56
2	A	801	NAG	O5-C1-C2	-2.77	107.69	111.52
8	A	822	9TB	CAY-CBE-NAV	-2.68	106.58	112.39
2	A	808	NAG	O5-C1-C2	-2.58	107.96	111.52
2	A	809	NAG	O5-C1-C2	-2.55	108.00	111.52
2	A	807	NAG	C6-C5-C4	-2.41	107.29	112.99
2	A	807	NAG	C4-C3-C2	-2.30	107.65	111.02
2	A	810	NAG	O5-C1-C2	-2.17	108.53	111.52
8	A	822	9TB	CAS-CBE-CAY	-2.16	108.90	112.11
2	A	814	NAG	O4-C4-C5	-2.12	103.99	109.31
4	A	812	MAN	O5-C5-C6	2.11	110.48	107.15
8	A	822	9TB	OAE-CBA-N	2.14	126.42	122.56
2	A	804	NAG	C1-O5-C5	2.19	115.20	112.19
8	A	822	9TB	CBC-CAQ-NAT	2.41	118.26	113.01
4	A	817	MAN	O5-C5-C6	2.47	111.06	107.15
8	A	822	9TB	FAI-CBB-CAJ	2.62	123.12	118.53
4	A	816	MAN	O5-C5-C6	2.65	111.35	107.15

Continued on next page...

Continued from previous page...

Mol	Chain	Res	Type	Atoms	Z	Observed(°)	Ideal(°)
8	A	822	9TB	CAQ-NAT-CAZ	2.67	126.53	122.30
2	A	814	NAG	C8-C7-N2	2.70	120.84	116.10
8	A	822	9TB	CAM-CAK-CBB	2.88	121.38	118.35
2	A	810	NAG	C8-C7-N2	2.96	121.28	116.10
8	A	822	9TB	CAL-CAJ-CBB	3.00	121.50	118.35
8	A	822	9TB	CAO-CAZ-NAT	3.09	121.81	116.46
2	A	803	NAG	C8-C7-N2	3.11	121.55	116.10
2	A	807	NAG	C8-C7-N2	3.20	121.71	116.10
2	A	814	NAG	C1-O5-C5	3.66	117.22	112.19
2	A	802	NAG	C2-N2-C7	4.46	129.45	122.94
3	A	811	BMA	C1-O5-C5	4.77	118.74	112.19
2	A	807	NAG	C1-O5-C5	6.43	121.03	112.19

There are no chirality outliers.

There are no torsion outliers.

There are no ring outliers.

1 monomer is involved in 1 short contact:

Mol	Chain	Res	Type	Clashes	Symm-Clashes
2	A	808	NAG	1	0

5.7 Other polymers [i](#)

There are no such residues in this entry.

5.8 Polymer linkage issues [i](#)

There are no chain breaks in this entry.

6 Fit of model and data [i](#)

6.1 Protein, DNA and RNA chains [i](#)

In the following table, the column labelled ‘#RSRZ> 2’ contains the number (and percentage) of RSRZ outliers, followed by percent RSRZ outliers for the chain as percentile scores relative to all X-ray entries and entries of similar resolution. The OWAB column contains the minimum, median, 95th percentile and maximum values of the occupancy-weighted average B-factor per residue. The column labelled ‘Q< 0.9’ lists the number of (and percentage) of residues with an average occupancy less than 0.9.

Mol	Chain	Analysed	<RSRZ>	#RSRZ>2	OWAB(Å ²)	Q<0.9
1	A	692/707 (97%)	0.51	51 (7%) 14 16	26, 36, 55, 79	3 (0%)

All (51) RSRZ outliers are listed below:

Mol	Chain	Res	Type	RSRZ
1	A	546	PHE	9.8
1	A	656[A]	SER	7.5
1	A	547	SER	6.1
1	A	541	TRP	5.7
1	A	55	LYS	5.4
1	A	507	SER	5.2
1	A	155	SER	4.9
1	A	153	ASN	4.3
1	A	719	VAL	3.9
1	A	135	GLY	3.8
1	A	506	PHE	3.7
1	A	336	ASN	3.6
1	A	131	ILE	3.5
1	A	154	VAL	3.5
1	A	505	GLU	3.4
1	A	138[A]	ILE	3.4
1	A	136	ASN	3.4
1	A	134	ASP	3.4
1	A	334	THR	3.2
1	A	152	GLU	3.0
1	A	133	GLU	3.0
1	A	487	GLY	3.0
1	A	428	LEU	2.9
1	A	548	GLY	2.8
1	A	659[A]	ILE	2.7
1	A	56	HIS	2.7
1	A	171	GLU	2.6

Continued on next page...

Continued from previous page...

Mol	Chain	Res	Type	RSRZ
1	A	312[A]	SER	2.6
1	A	72	LYS	2.5
1	A	504	PRO	2.5
1	A	337	PHE	2.5
1	A	151	TYR	2.4
1	A	335	GLY	2.4
1	A	310	GLY	2.4
1	A	676	ILE	2.4
1	A	209	PHE	2.3
1	A	386	ILE	2.3
1	A	124	HIS	2.3
1	A	123	THR	2.3
1	A	102	GLU	2.3
1	A	331	PRO	2.3
1	A	219	LEU	2.2
1	A	654	ASP	2.2
1	A	652	ASP	2.2
1	A	122	LYS	2.2
1	A	191	ASP	2.2
1	A	373	ILE	2.1
1	A	169	MET	2.1
1	A	248	LEU	2.1
1	A	499	LYS	2.0
1	A	408	GLU	2.0

6.2 Non-standard residues in protein, DNA, RNA chains [i](#)

There are no non-standard protein/DNA/RNA residues in this entry.

6.3 Carbohydrates [i](#)

There are no carbohydrates in this entry.

6.4 Ligands [i](#)

In the following table, the Atoms column lists the number of modelled atoms in the group and the number defined in the chemical component dictionary. The B-factors column lists the minimum, median, 95th percentile and maximum values of B factors of atoms in the group. The column labelled 'Q< 0.9' lists the number of atoms with occupancy less than 0.9.

Mol	Type	Chain	Res	Atoms	RSCC	RSR	B-factors(\AA^2)	Q<0.9
2	NAG	A	804	14/15	0.58	0.41	77,80,83,84	0
4	MAN	A	817	11/12	0.63	0.26	61,64,67,70	0
2	NAG	A	802	14/15	0.67	0.27	50,57,65,66	0
2	NAG	A	807	14/15	0.69	0.23	74,79,83,85	0
2	NAG	A	803	14/15	0.76	0.26	52,58,65,70	0
4	MAN	A	812	11/12	0.77	0.23	59,63,64,68	0
3	BMA	A	811	11/12	0.80	0.22	57,59,64,69	0
2	NAG	A	808	14/15	0.81	0.14	41,48,57,57	0
2	NAG	A	805	14/15	0.81	0.22	48,52,57,58	0
4	MAN	A	816	11/12	0.83	0.12	55,58,61,61	0
2	NAG	A	806	14/15	0.83	0.28	61,65,71,74	0
2	NAG	A	813	14/15	0.84	0.12	34,40,48,57	0
2	NAG	A	810	14/15	0.85	0.12	44,50,54,62	0
3	BMA	A	815	11/12	0.88	0.14	51,52,55,56	0
2	NAG	A	814	14/15	0.88	0.18	49,53,63,66	0
2	NAG	A	801	14/15	0.92	0.17	42,48,56,59	0
2	NAG	A	809	14/15	0.93	0.08	37,41,47,51	0
8	9TB	A	822	31/31	0.94	0.14	30,36,69,81	0
5	ZN	A	819	1/1	1.00	0.10	28,28,28,28	0
6	CA	A	820	1/1	1.00	0.11	27,27,27,27	0
7	CL	A	821	1/1	1.00	0.13	31,31,31,31	0
5	ZN	A	818	1/1	1.00	0.09	29,29,29,29	0

6.5 Other polymers [i](#)

There are no such residues in this entry.