



Full wwPDB X-ray Structure Validation Report ⓘ

Nov 2, 2023 – 09:29 AM EDT

PDB ID : 3OGR
Title : Complex structure of beta-galactosidase from *Trichoderma reesei* with galactose
Authors : Maksimainen, M.; Rouvinen, J.
Deposited on : 2010-08-17
Resolution : 1.50 Å(reported)

This is a Full wwPDB X-ray Structure Validation Report for a publicly released PDB entry.

We welcome your comments at validation@mail.wwpdb.org

A user guide is available at

<https://www.wwpdb.org/validation/2017/XrayValidationReportHelp>

with specific help available everywhere you see the ⓘ symbol.

The types of validation reports are described at

<http://www.wwpdb.org/validation/2017/FAQs#types>.

The following versions of software and data (see [references ⓘ](#)) were used in the production of this report:

MolProbity : 4.02b-467
Mogul : 1.8.5 (274361), CSD as541be (2020)
Xtriage (Phenix) : 1.13
EDS : 2.36
Percentile statistics : 20191225.v01 (using entries in the PDB archive December 25th 2019)
Refmac : 5.8.0158
CCP4 : 7.0.044 (Gargrove)
Ideal geometry (proteins) : Engh & Huber (2001)
Ideal geometry (DNA, RNA) : Parkinson et al. (1996)
Validation Pipeline (wwPDB-VP) : 2.36

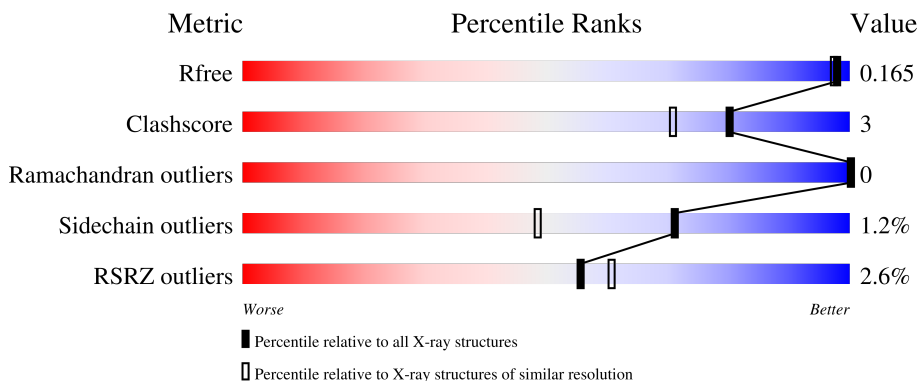
1 Overall quality at a glance i

The following experimental techniques were used to determine the structure:

X-RAY DIFFRACTION

The reported resolution of this entry is 1.50 Å.

Percentile scores (ranging between 0-100) for global validation metrics of the entry are shown in the following graphic. The table shows the number of entries on which the scores are based.



Metric	Whole archive (#Entries)	Similar resolution (#Entries, resolution range(Å))
R_{free}	130704	2936 (1.50-1.50)
Clashscore	141614	3144 (1.50-1.50)
Ramachandran outliers	138981	3066 (1.50-1.50)
Sidechain outliers	138945	3064 (1.50-1.50)
RSRZ outliers	127900	2884 (1.50-1.50)

The table below summarises the geometric issues observed across the polymeric chains and their fit to the electron density. The red, orange, yellow and green segments of the lower bar indicate the fraction of residues that contain outliers for ≥ 3 , 2, 1 and 0 types of geometric quality criteria respectively. A grey segment represents the fraction of residues that are not modelled. The numeric value for each fraction is indicated below the corresponding segment, with a dot representing fractions $\leq 5\%$. The upper red bar (where present) indicates the fraction of residues that have poor fit to the electron density. The numeric value is given above the bar.

Mol	Chain	Length	Quality of chain
1	A	1003	 3% 90% 8% ..
2	B	7	 14% 71% 14%
3	C	10	 90% 10%
4	D	2	 50% 50%

2 Entry composition i

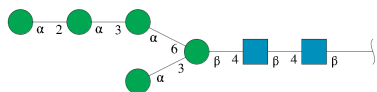
There are 7 unique types of molecules in this entry. The entry contains 8986 atoms, of which 0 are hydrogens and 0 are deuteriums.

In the tables below, the ZeroOcc column contains the number of atoms modelled with zero occupancy, the AltConf column contains the number of residues with at least one atom in alternate conformation and the Trace column contains the number of residues modelled with at most 2 atoms.

- Molecule 1 is a protein called Beta-galactosidase.

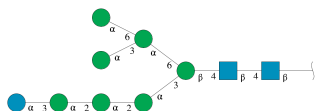
Mol	Chain	Residues	Atoms					ZeroOcc	AltConf	Trace
			Total	C	N	O	S			
1	A	986	7688	4939	1298	1443	8	0	9	0

- Molecule 2 is an oligosaccharide called alpha-D-mannopyranose-(1-2)-alpha-D-mannopyranose-(1-3)-alpha-D-mannopyranose-(1-6)-[alpha-D-mannopyranose-(1-3)]beta-D-mannopyranose-(1-4)-2-acetamido-2-deoxy-beta-D-glucopyranose-(1-4)-2-acetamido-2-deoxy-beta-D-glucopyranose.



Mol	Chain	Residues	Atoms				ZeroOcc	AltConf	Trace
			Total	C	N	O			
2	B	7	83	46	2	35	0	0	0

- Molecule 3 is an oligosaccharide called alpha-D-glucopyranose-(1-3)-alpha-D-mannopyranose-(1-2)-alpha-D-mannopyranose-(1-2)-alpha-D-mannopyranose-(1-3)-[alpha-D-mannopyranose-(1-3)-[alpha-D-mannopyranose-(1-6)]alpha-D-mannopyranose-(1-6)]beta-D-mannopyranose-(1-4)-2-acetamido-2-deoxy-beta-D-glucopyranose-(1-4)-2-acetamido-2-deoxy-beta-D-glucopyranose.



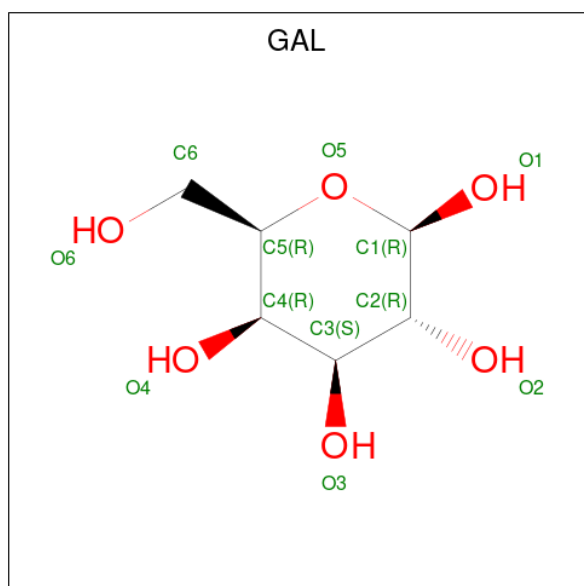
Mol	Chain	Residues	Atoms				ZeroOcc	AltConf	Trace
			Total	C	N	O			
3	C	10	116	64	2	50	0	0	0

- Molecule 4 is an oligosaccharide called 2-acetamido-2-deoxy-beta-D-glucopyranose-(1-4)-2-acetamido-2-deoxy-beta-D-glucopyranose.



Mol	Chain	Residues	Atoms			ZeroOcc	AltConf	Trace	
			Total	C	N				O
4	D	2	28	16	2	10	0	0	0

- Molecule 5 is beta-D-galactopyranose (three-letter code: GAL) (formula: C₆H₁₂O₆).



Mol	Chain	Residues	Atoms			ZeroOcc	AltConf
			Total	C	O		
5	A	1	12	6	6	0	0

- Molecule 6 is 2-acetamido-2-deoxy-beta-D-glucopyranose (three-letter code: NAG) (formula: C₈H₁₅NO₆).



Mol	Chain	Residues	Atoms				ZeroOcc	AltConf
6	A	1	Total	C	N	O	0	0
			14	8	1	5		
6	A	1	Total	C	N	O	0	0
			14	8	1	5		

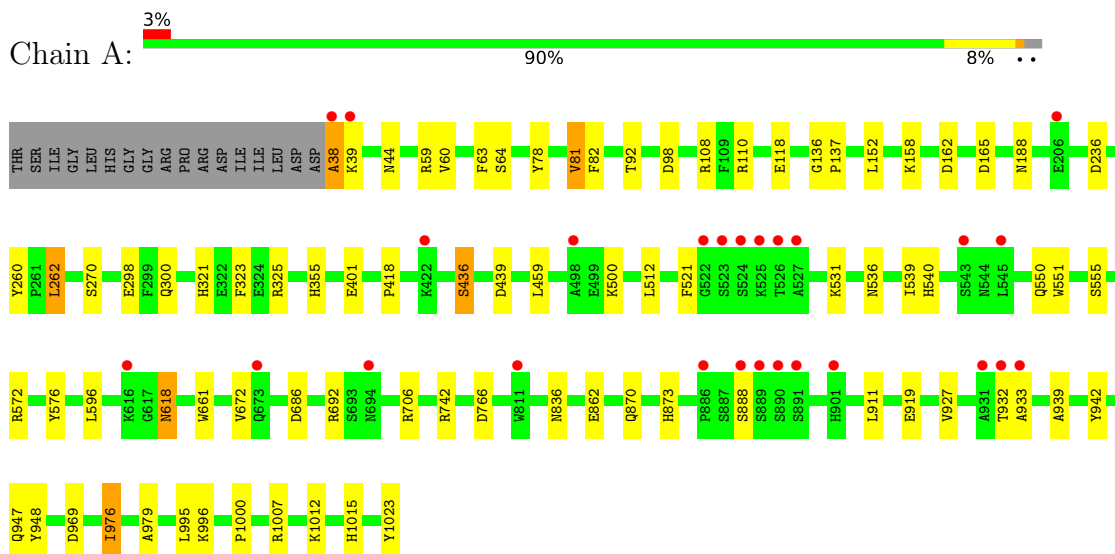
- Molecule 7 is water.

Mol	Chain	Residues	Atoms		ZeroOcc	AltConf
7	A	1031	Total	O	0	0
			1031	1031		

3 Residue-property plots [i](#)

These plots are drawn for all protein, RNA, DNA and oligosaccharide chains in the entry. The first graphic for a chain summarises the proportions of the various outlier classes displayed in the second graphic. The second graphic shows the sequence view annotated by issues in geometry and electron density. Residues are color-coded according to the number of geometric quality criteria for which they contain at least one outlier: green = 0, yellow = 1, orange = 2 and red = 3 or more. A red dot above a residue indicates a poor fit to the electron density ($RSRZ > 2$). Stretches of 2 or more consecutive residues without any outlier are shown as a green connector. Residues present in the sample, but not in the model, are shown in grey.

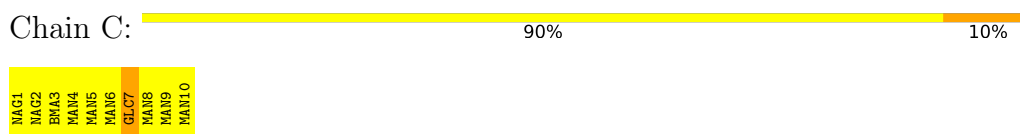
- Molecule 1: Beta-galactosidase



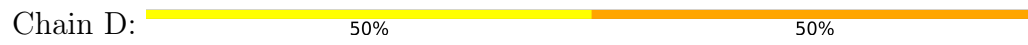
- Molecule 2: alpha-D-mannopyranose-(1-2)-alpha-D-mannopyranose-(1-3)-alpha-D-mannopyranose-(1-6)-[alpha-D-mannopyranose-(1-3)]beta-D-mannopyranose-(1-4)-2-acetamido-2-deoxy-beta-D-glucopyranose-(1-4)-2-acetamido-2-deoxy-beta-D-glucopyranose



- Molecule 3: alpha-D-glucopyranose-(1-3)-alpha-D-mannopyranose-(1-2)-alpha-D-mannopyranose-(1-2)-alpha-D-mannopyranose-(1-3)-[alpha-D-mannopyranose-(1-3)-[alpha-D-mannopyranose-(1-6)]alpha-D-mannopyranose-(1-6)]beta-D-mannopyranose-(1-4)-2-acetamido-2-deoxy-beta-D-glucopyranose-(1-4)-2-acetamido-2-deoxy-beta-D-glucopyranose



- Molecule 4: 2-acetamido-2-deoxy-beta-D-glucopyranose-(1-4)-2-acetamido-2-deoxy-beta-D-glucopyranose



MAG1
MAG2

4 Data and refinement statistics i

Property	Value	Source
Space group	P 1	Depositor
Cell constants a, b, c, α , β , γ	67.43Å 69.28Å 81.50Å 109.03° 97.34° 114.38°	Depositor
Resolution (Å)	19.78 – 1.50 19.78 – 1.50	Depositor EDS
% Data completeness (in resolution range)	100.0 (19.78-1.50) 92.7 (19.78-1.50)	Depositor EDS
R_{merge}	(Not available)	Depositor
R_{sym}	(Not available)	Depositor
$\langle I/\sigma(I) \rangle$ ¹	3.11 (at 1.50Å)	Xtrriage
Refinement program	REFMAC 5.5.0072	Depositor
R, R_{free}	0.128 , 0.168 0.145 , 0.165	Depositor DCC
R_{free} test set	8981 reflections (5.00%)	wwPDB-VP
Wilson B-factor (Å ²)	9.6	Xtrriage
Anisotropy	0.758	Xtrriage
Bulk solvent k_{sol} (e/Å ³), B_{sol} (Å ²)	0.41 , 55.5	EDS
L-test for twinning ²	$\langle L \rangle = 0.49$, $\langle L^2 \rangle = 0.33$	Xtrriage
Estimated twinning fraction	0.014 for k,h,-h-k-l	Xtrriage
F_o, F_c correlation	0.97	EDS
Total number of atoms	8986	wwPDB-VP
Average B, all atoms (Å ²)	13.0	wwPDB-VP

Xtrriage's analysis on translational NCS is as follows: *The largest off-origin peak in the Patterson function is 4.76% of the height of the origin peak. No significant pseudotranslation is detected.*

¹Intensities estimated from amplitudes.

²Theoretical values of $\langle |L| \rangle$, $\langle L^2 \rangle$ for acentric reflections are 0.5, 0.333 respectively for untwinned datasets, and 0.375, 0.2 for perfectly twinned datasets.

5 Model quality i

5.1 Standard geometry i

Bond lengths and bond angles in the following residue types are not validated in this section: MAN, NAG, BMA, GLC, GAL

The Z score for a bond length (or angle) is the number of standard deviations the observed value is removed from the expected value. A bond length (or angle) with $|Z| > 5$ is considered an outlier worth inspection. RMSZ is the root-mean-square of all Z scores of the bond lengths (or angles).

Mol	Chain	Bond lengths		Bond angles	
		RMSZ	# Z >5	RMSZ	# Z >5
1	A	1.29	31/7908 (0.4%)	1.05	30/10777 (0.3%)

All (31) bond length outliers are listed below:

Mol	Chain	Res	Type	Atoms	Z	Observed(Å)	Ideal(Å)
1	A	555[A]	SER	CB-OG	-13.59	1.24	1.42
1	A	555[B]	SER	CB-OG	-13.59	1.24	1.42
1	A	270[A]	SER	CA-CB	-9.74	1.38	1.52
1	A	270[B]	SER	CA-CB	-9.74	1.38	1.52
1	A	942	TYR	CD2-CE2	7.96	1.51	1.39
1	A	919	GLU	CD-OE1	7.79	1.34	1.25
1	A	551	TRP	CE3-CZ3	-7.58	1.25	1.38
1	A	862	GLU	CB-CG	-7.05	1.38	1.52
1	A	82[A]	PHE	CG-CD2	6.96	1.49	1.38
1	A	82[B]	PHE	CG-CD2	6.96	1.49	1.38
1	A	555[A]	SER	C-N	6.72	1.49	1.34
1	A	555[B]	SER	C-N	6.72	1.49	1.34
1	A	118	GLU	CD-OE1	6.69	1.33	1.25
1	A	500	LYS	CD-CE	6.40	1.67	1.51
1	A	500	LYS	CE-NZ	6.40	1.65	1.49
1	A	118	GLU	CD-OE2	6.29	1.32	1.25
1	A	862	GLU	CD-OE2	-6.14	1.18	1.25
1	A	108	ARG	CZ-NH1	5.84	1.40	1.33
1	A	661	TRP	CE3-CZ3	5.75	1.48	1.38
1	A	81	VAL	CB-CG2	-5.62	1.41	1.52
1	A	38	ALA	CA-CB	5.60	1.64	1.52
1	A	536	ASN	CB-CG	-5.40	1.38	1.51
1	A	44	ASN	CB-CG	-5.33	1.38	1.51
1	A	158	LYS	CD-CE	5.30	1.64	1.51
1	A	551	TRP	CB-CG	5.28	1.59	1.50
1	A	521	PHE	CE1-CZ	5.20	1.47	1.37

Continued on next page...

Continued from previous page...

Mol	Chain	Res	Type	Atoms	Z	Observed(Å)	Ideal(Å)
1	A	108	ARG	CB-CG	-5.18	1.38	1.52
1	A	551	TRP	CG-CD1	5.06	1.43	1.36
1	A	976[A]	ILE	C-O	5.03	1.32	1.23
1	A	976[B]	ILE	C-O	5.03	1.32	1.23
1	A	436	SER	CB-OG	5.01	1.48	1.42

All (30) bond angle outliers are listed below:

Mol	Chain	Res	Type	Atoms	Z	Observed(°)	Ideal(°)
1	A	572	ARG	NE-CZ-NH2	-10.22	115.19	120.30
1	A	323	PHE	CB-CG-CD1	-7.22	115.75	120.80
1	A	706	ARG	NE-CZ-NH1	7.20	123.90	120.30
1	A	942	TYR	CG-CD2-CE2	-6.97	115.73	121.30
1	A	969	ASP	CB-CG-OD1	6.90	124.51	118.30
1	A	108	ARG	NE-CZ-NH2	-6.63	116.98	120.30
1	A	262	LEU	CB-CG-CD1	6.47	122.00	111.00
1	A	325	ARG	NE-CZ-NH2	-6.27	117.17	120.30
1	A	152	LEU	CB-CG-CD2	6.18	121.51	111.00
1	A	82[A]	PHE	CB-CG-CD2	-6.18	116.48	120.80
1	A	82[B]	PHE	CB-CG-CD2	-6.18	116.48	120.80
1	A	766	ASP	CB-CG-OD1	6.10	123.79	118.30
1	A	576	TYR	CB-CG-CD2	-6.04	117.38	121.00
1	A	572	ARG	NE-CZ-NH1	5.97	123.28	120.30
1	A	82[A]	PHE	CB-CG-CD1	5.97	124.98	120.80
1	A	82[B]	PHE	CB-CG-CD1	5.97	124.98	120.80
1	A	236	ASP	CB-CG-OD1	5.92	123.63	118.30
1	A	165	ASP	CB-CG-OD1	5.88	123.59	118.30
1	A	766	ASP	CB-CG-OD2	-5.88	113.01	118.30
1	A	976[A]	ILE	CB-CG1-CD1	-5.75	97.79	113.90
1	A	976[B]	ILE	CB-CG1-CD1	-5.75	97.79	113.90
1	A	439	ASP	CB-CG-OD2	-5.68	113.19	118.30
1	A	1007	ARG	NE-CZ-NH1	-5.65	117.48	120.30
1	A	995	LEU	CA-CB-CG	5.62	128.23	115.30
1	A	933	ALA	N-CA-C	-5.55	96.02	111.00
1	A	98	ASP	CB-CG-OD1	5.49	123.24	118.30
1	A	162	ASP	CB-CG-OD1	5.37	123.13	118.30
1	A	572	ARG	CD-NE-CZ	5.31	131.04	123.60
1	A	59	ARG	NE-CZ-NH2	-5.15	117.72	120.30
1	A	162	ASP	CB-CG-OD2	-5.15	113.67	118.30

There are no chirality outliers.

There are no planarity outliers.

5.2 Too-close contacts

In the following table, the Non-H and H(model) columns list the number of non-hydrogen atoms and hydrogen atoms in the chain respectively. The H(added) column lists the number of hydrogen atoms added and optimized by MolProbity. The Clashes column lists the number of clashes within the asymmetric unit, whereas Symm-Clashes lists symmetry-related clashes.

Mol	Chain	Non-H	H(model)	H(added)	Clashes	Symm-Clashes
1	A	7688	0	7472	41	0
2	B	83	0	70	1	0
3	C	116	0	95	1	0
4	D	28	0	25	2	0
5	A	12	0	12	1	0
6	A	28	0	26	0	0
7	A	1031	0	0	12	0
All	All	8986	0	7700	42	0

The all-atom clashscore is defined as the number of clashes found per 1000 atoms (including hydrogen atoms). The all-atom clashscore for this structure is 3.

All (42) close contacts within the same asymmetric unit are listed below, sorted by their clash magnitude.

Atom-1	Atom-2	Interatomic distance (Å)	Clash overlap (Å)
1:A:976[A]:ILE:CD1	1:A:976[A]:ILE:CG1	1.76	1.62
1:A:976[B]:ILE:CG2	1:A:976[B]:ILE:CB	1.79	1.59
1:A:38:ALA:HB3	7:A:1704:HOH:O	1.73	0.89
1:A:976[A]:ILE:CD1	1:A:976[A]:ILE:CB	2.53	0.85
1:A:110:ARG:NE	7:A:2064:HOH:O	2.16	0.77
1:A:976[A]:ILE:HG21	1:A:976[A]:ILE:HD13	1.69	0.74
1:A:976[B]:ILE:CG2	1:A:976[B]:ILE:CA	2.71	0.66
1:A:78:TYR:O	1:A:81:VAL:HG22	1.96	0.65
7:A:1968:HOH:O	3:C:7:GLC:H61	1.97	0.64
1:A:911:LEU:HD22	1:A:976[A]:ILE:HD11	1.81	0.63
1:A:512:LEU:HD11	1:A:550:GLN:HG2	1.83	0.59
1:A:188:ASN:HB3	7:A:1560:HOH:O	2.05	0.57
1:A:976[A]:ILE:CD1	1:A:976[A]:ILE:CG2	2.83	0.56
1:A:976[A]:ILE:CD1	1:A:976[A]:ILE:HG21	2.35	0.56
1:A:873:HIS:H	1:A:873:HIS:CD2	2.26	0.54
1:A:436:SER:OG	4:D:1:NAG:H5	2.07	0.53
1:A:976[B]:ILE:CG2	1:A:976[B]:ILE:CG1	2.78	0.51
1:A:976[A]:ILE:HD13	1:A:976[A]:ILE:CG2	2.40	0.50
1:A:870:GLN:NE2	7:A:1757:HOH:O	2.45	0.49
1:A:459:LEU:HD13	1:A:540:HIS:HD2	1.78	0.48

Continued on next page...

Continued from previous page...

Atom-1	Atom-2	Interatomic distance (Å)	Clash overlap (Å)
1:A:60[B]:VAL:HG21	1:A:596:LEU:HD12	1.95	0.48
1:A:321:HIS:HD2	7:A:1182:HOH:O	1.96	0.48
1:A:298:GLU:OE1	5:A:1024:GAL:H1	2.15	0.47
1:A:401:GLU:HB2	1:A:418:PRO:HG2	1.98	0.46
1:A:531:LYS:HE3	1:A:539:ILE:HD12	1.98	0.46
1:A:742:ARG:HG2	7:A:1772:HOH:O	2.14	0.46
1:A:136:GLY:HA3	1:A:137:PRO:C	2.36	0.46
1:A:1023:TYR:HB2	7:A:1711:HOH:O	2.14	0.46
1:A:692:ARG:NH1	7:A:1635:HOH:O	2.39	0.46
1:A:1012:LYS:HE3	7:A:1586:HOH:O	2.16	0.46
1:A:618:ASN:HD22	1:A:618:ASN:C	2.19	0.45
1:A:836:ASN:ND2	7:A:1913:HOH:O	2.48	0.45
1:A:64:SER:HA	1:A:92:THR:O	2.18	0.44
1:A:321:HIS:HE1	2:B:5:MAN:O4	2.02	0.42
1:A:873:HIS:HE1	7:A:1135:HOH:O	2.00	0.42
1:A:686:ASP:OD2	1:A:692:ARG:CZ	2.68	0.42
1:A:436:SER:O	4:D:1:NAG:H62	2.20	0.41
1:A:672:VAL:HG23	1:A:1000:PRO:HG3	2.00	0.41
1:A:459:LEU:HD13	1:A:540:HIS:CD2	2.55	0.41
1:A:927:VAL:HG21	1:A:996:LYS:HG3	2.02	0.41
1:A:260:TYR:HA	1:A:300:GLN:HB2	2.01	0.41
1:A:939:ALA:HA	1:A:979:ALA:O	2.21	0.41

There are no symmetry-related clashes.

5.3 Torsion angles [i](#)

5.3.1 Protein backbone [i](#)

In the following table, the Percentiles column shows the percent Ramachandran outliers of the chain as a percentile score with respect to all X-ray entries followed by that with respect to entries of similar resolution.

The Analysed column shows the number of residues for which the backbone conformation was analysed, and the total number of residues.

Mol	Chain	Analysed	Favoured	Allowed	Outliers	Percentiles
1	A	993/1003 (99%)	964 (97%)	29 (3%)	0	100 100

There are no Ramachandran outliers to report.

5.3.2 Protein sidechains [i](#)

In the following table, the Percentiles column shows the percent sidechain outliers of the chain as a percentile score with respect to all X-ray entries followed by that with respect to entries of similar resolution.

The Analysed column shows the number of residues for which the sidechain conformation was analysed, and the total number of residues.

Mol	Chain	Analysed	Rotameric	Outliers	Percentiles
1	A	814/819 (99%)	804 (99%)	10 (1%)	71 48

All (10) residues with a non-rotameric sidechain are listed below:

Mol	Chain	Res	Type
1	A	39	LYS
1	A	63	PHE
1	A	262	LEU
1	A	355	HIS
1	A	618	ASN
1	A	888	SER
1	A	932	THR
1	A	947	GLN
1	A	948	TYR
1	A	1015	HIS

Sometimes sidechains can be flipped to improve hydrogen bonding and reduce clashes. All (8) such sidechains are listed below:

Mol	Chain	Res	Type
1	A	225	ASN
1	A	321	HIS
1	A	540	HIS
1	A	618	ASN
1	A	664	HIS
1	A	836	ASN
1	A	873	HIS
1	A	884	HIS

5.3.3 RNA [i](#)

There are no RNA molecules in this entry.

5.4 Non-standard residues in protein, DNA, RNA chains [i](#)

There are no non-standard protein/DNA/RNA residues in this entry.

5.5 Carbohydrates [i](#)

19 monosaccharides are modelled in this entry.

In the following table, the Counts columns list the number of bonds (or angles) for which Mogul statistics could be retrieved, the number of bonds (or angles) that are observed in the model and the number of bonds (or angles) that are defined in the Chemical Component Dictionary. The Link column lists molecule types, if any, to which the group is linked. The Z score for a bond length (or angle) is the number of standard deviations the observed value is removed from the expected value. A bond length (or angle) with $|Z| > 2$ is considered an outlier worth inspection. RMSZ is the root-mean-square of all Z scores of the bond lengths (or angles).

Mol	Type	Chain	Res	Link	Bond lengths			Bond angles		
					Counts	RMSZ	# Z > 2	Counts	RMSZ	# Z > 2
2	NAG	B	1	2,1	14,14,15	1.58	2 (14%)	17,19,21	1.24	1 (5%)
2	NAG	B	2	2	14,14,15	0.60	0	17,19,21	1.06	1 (5%)
2	BMA	B	3	2	11,11,12	1.03	0	15,15,17	1.53	3 (20%)
2	MAN	B	4	2	11,11,12	0.98	0	15,15,17	0.94	0
2	MAN	B	5	2	11,11,12	1.14	1 (9%)	15,15,17	1.08	1 (6%)
2	MAN	B	6	2	11,11,12	0.82	0	15,15,17	1.30	2 (13%)
2	MAN	B	7	2	11,11,12	1.46	1 (9%)	15,15,17	2.03	3 (20%)
3	NAG	C	1	3,1	14,14,15	1.08	1 (7%)	17,19,21	1.62	5 (29%)
3	MAN	C	10	3	11,11,12	0.84	0	15,15,17	1.59	5 (33%)
3	NAG	C	2	3	14,14,15	0.96	0	17,19,21	1.14	2 (11%)
3	BMA	C	3	3	11,11,12	1.03	0	15,15,17	1.17	1 (6%)
3	MAN	C	4	3	11,11,12	0.97	1 (9%)	15,15,17	2.91	8 (53%)
3	MAN	C	5	3	11,11,12	0.42	0	15,15,17	1.60	3 (20%)
3	MAN	C	6	3	11,11,12	0.97	0	15,15,17	1.72	5 (33%)
3	GLC	C	7	3	11,11,12	1.63	3 (27%)	15,15,17	3.95	5 (33%)
3	MAN	C	8	3	11,11,12	0.70	0	15,15,17	2.52	4 (26%)
3	MAN	C	9	3	11,11,12	1.06	0	15,15,17	2.01	6 (40%)
4	NAG	D	1	4,1	14,14,15	1.32	1 (7%)	17,19,21	3.23	10 (58%)
4	NAG	D	2	4	14,14,15	0.86	1 (7%)	17,19,21	1.66	5 (29%)

In the following table, the Chirals column lists the number of chiral outliers, the number of chiral centers analysed, the number of these observed in the model and the number defined in the Chemical Component Dictionary. Similar counts are reported in the Torsion and Rings columns.

'-' means no outliers of that kind were identified.

Mol	Type	Chain	Res	Link	Chirals	Torsions	Rings
2	NAG	B	1	2,1	-	0/6/23/26	0/1/1/1
2	NAG	B	2	2	-	0/6/23/26	0/1/1/1
2	BMA	B	3	2	-	0/2/19/22	0/1/1/1
2	MAN	B	4	2	-	0/2/19/22	0/1/1/1
2	MAN	B	5	2	-	0/2/19/22	0/1/1/1
2	MAN	B	6	2	-	2/2/19/22	0/1/1/1
2	MAN	B	7	2	-	0/2/19/22	0/1/1/1
3	NAG	C	1	3,1	-	0/6/23/26	0/1/1/1
3	MAN	C	10	3	-	2/2/19/22	0/1/1/1
3	NAG	C	2	3	-	0/6/23/26	0/1/1/1
3	BMA	C	3	3	-	0/2/19/22	0/1/1/1
3	MAN	C	4	3	-	0/2/19/22	0/1/1/1
3	MAN	C	5	3	-	0/2/19/22	0/1/1/1
3	MAN	C	6	3	-	0/2/19/22	0/1/1/1
3	GLC	C	7	3	-	0/2/19/22	0/1/1/1
3	MAN	C	8	3	-	0/2/19/22	0/1/1/1
3	MAN	C	9	3	-	2/2/19/22	0/1/1/1
4	NAG	D	1	4,1	-	0/6/23/26	0/1/1/1
4	NAG	D	2	4	-	2/6/23/26	0/1/1/1

All (11) bond length outliers are listed below:

Mol	Chain	Res	Type	Atoms	Z	Observed(Å)	Ideal(Å)
2	B	1	NAG	O5-C1	-4.97	1.35	1.43
3	C	7	GLC	O5-C1	-3.83	1.37	1.43
4	D	1	NAG	C1-C2	-3.70	1.46	1.52
2	B	7	MAN	C2-C3	3.41	1.57	1.52
2	B	5	MAN	O5-C1	-2.81	1.39	1.43
3	C	7	GLC	O4-C4	-2.67	1.36	1.43
2	B	1	NAG	C1-C2	2.44	1.56	1.52
3	C	7	GLC	C2-C3	-2.42	1.49	1.52
3	C	1	NAG	C1-C2	2.40	1.55	1.52
4	D	2	NAG	C1-C2	2.17	1.55	1.52
3	C	4	MAN	O6-C6	-2.04	1.33	1.42

All (70) bond angle outliers are listed below:

Mol	Chain	Res	Type	Atoms	Z	Observed(°)	Ideal(°)
3	C	7	GLC	C1-C2-C3	9.13	120.89	109.67
3	C	7	GLC	C1-O5-C5	8.03	123.08	112.19

Continued on next page...

Continued from previous page...

Mol	Chain	Res	Type	Atoms	Z	Observed(°)	Ideal(°)
4	D	1	NAG	O5-C5-C6	7.54	119.03	107.20
3	C	8	MAN	O5-C5-C6	7.35	118.73	107.20
3	C	7	GLC	O3-C3-C2	-6.29	97.96	109.99
4	D	1	NAG	C2-N2-C7	5.79	131.15	122.90
2	B	7	MAN	C1-O5-C5	5.75	119.99	112.19
3	C	4	MAN	C1-O5-C5	5.64	119.83	112.19
3	C	7	GLC	C2-C3-C4	-5.49	101.39	110.89
3	C	4	MAN	O5-C1-C2	4.37	117.51	110.77
3	C	5	MAN	C1-O5-C5	4.35	118.08	112.19
3	C	8	MAN	O3-C3-C4	-4.34	100.32	110.35
3	C	4	MAN	C6-C5-C4	-4.21	103.15	113.00
3	C	4	MAN	C3-C4-C5	4.06	117.49	110.24
4	D	2	NAG	C1-C2-N2	4.06	117.43	110.49
3	C	1	NAG	O5-C1-C2	-4.04	104.91	111.29
3	C	6	MAN	C1-C2-C3	3.87	114.42	109.67
4	D	1	NAG	O3-C3-C2	-3.75	101.71	109.47
3	C	9	MAN	O5-C5-C6	3.63	112.89	107.20
4	D	1	NAG	C4-C3-C2	3.60	116.30	111.02
2	B	1	NAG	O5-C1-C2	-3.58	105.64	111.29
3	C	9	MAN	O2-C2-C1	-3.35	102.31	109.15
2	B	7	MAN	O5-C1-C2	-3.30	105.68	110.77
4	D	1	NAG	O5-C5-C4	-3.24	102.94	110.83
4	D	1	NAG	C1-O5-C5	3.24	116.58	112.19
3	C	4	MAN	O2-C2-C3	-3.20	103.72	110.14
3	C	4	MAN	C1-C2-C3	-3.20	105.74	109.67
2	B	3	BMA	C1-O5-C5	-3.17	107.89	112.19
3	C	9	MAN	C1-O5-C5	3.11	116.40	112.19
3	C	4	MAN	O5-C5-C6	-3.08	102.38	107.20
4	D	2	NAG	C2-N2-C7	2.95	127.11	122.90
3	C	10	MAN	C1-O5-C5	2.92	116.15	112.19
4	D	1	NAG	O7-C7-N2	2.92	127.31	121.95
2	B	3	BMA	O3-C3-C2	-2.85	104.54	109.99
4	D	1	NAG	O4-C4-C5	-2.79	102.37	109.30
4	D	2	NAG	C8-C7-N2	2.74	120.75	116.10
3	C	4	MAN	O4-C4-C5	-2.74	102.49	109.30
3	C	6	MAN	O5-C1-C2	-2.68	106.64	110.77
3	C	5	MAN	C1-C2-C3	-2.67	106.38	109.67
2	B	5	MAN	C1-O5-C5	2.60	115.72	112.19
2	B	6	MAN	O6-C6-C5	-2.60	102.37	111.29
3	C	8	MAN	O3-C3-C2	2.60	114.97	109.99
2	B	7	MAN	C6-C5-C4	-2.59	106.95	113.00
3	C	1	NAG	C1-C2-N2	-2.55	106.13	110.49

Continued on next page...

Continued from previous page...

Mol	Chain	Res	Type	Atoms	Z	Observed(°)	Ideal(°)
2	B	6	MAN	O3-C3-C2	-2.55	105.11	109.99
4	D	2	NAG	O7-C7-C8	-2.53	117.35	122.06
4	D	1	NAG	O7-C7-C8	-2.53	117.37	122.06
3	C	10	MAN	C1-C2-C3	-2.45	106.66	109.67
3	C	8	MAN	C6-C5-C4	-2.43	107.31	113.00
3	C	10	MAN	O6-C6-C5	-2.36	103.19	111.29
3	C	1	NAG	C1-O5-C5	2.33	115.35	112.19
3	C	5	MAN	O3-C3-C2	-2.33	105.54	109.99
2	B	3	BMA	O4-C4-C3	-2.26	105.11	110.35
3	C	10	MAN	O5-C5-C4	2.22	116.22	110.83
3	C	7	GLC	O4-C4-C5	-2.22	103.79	109.30
3	C	9	MAN	C1-C2-C3	2.22	112.39	109.67
3	C	6	MAN	C6-C5-C4	-2.21	107.83	113.00
2	B	2	NAG	C4-C3-C2	-2.21	107.78	111.02
3	C	6	MAN	O3-C3-C4	-2.18	105.31	110.35
3	C	2	NAG	O4-C4-C3	-2.17	105.33	110.35
3	C	3	BMA	C1-C2-C3	-2.14	107.03	109.67
3	C	1	NAG	C8-C7-N2	2.12	119.69	116.10
3	C	9	MAN	C2-C3-C4	2.12	114.56	110.89
3	C	6	MAN	O5-C5-C6	-2.11	103.89	107.20
3	C	1	NAG	O7-C7-N2	-2.09	118.12	121.95
3	C	9	MAN	O2-C2-C3	-2.06	106.02	110.14
3	C	2	NAG	C1-C2-N2	-2.03	107.01	110.49
4	D	1	NAG	O3-C3-C4	2.02	115.02	110.35
4	D	2	NAG	O5-C5-C6	2.02	110.37	107.20
3	C	10	MAN	C3-C4-C5	2.00	113.81	110.24

There are no chirality outliers.

All (8) torsion outliers are listed below:

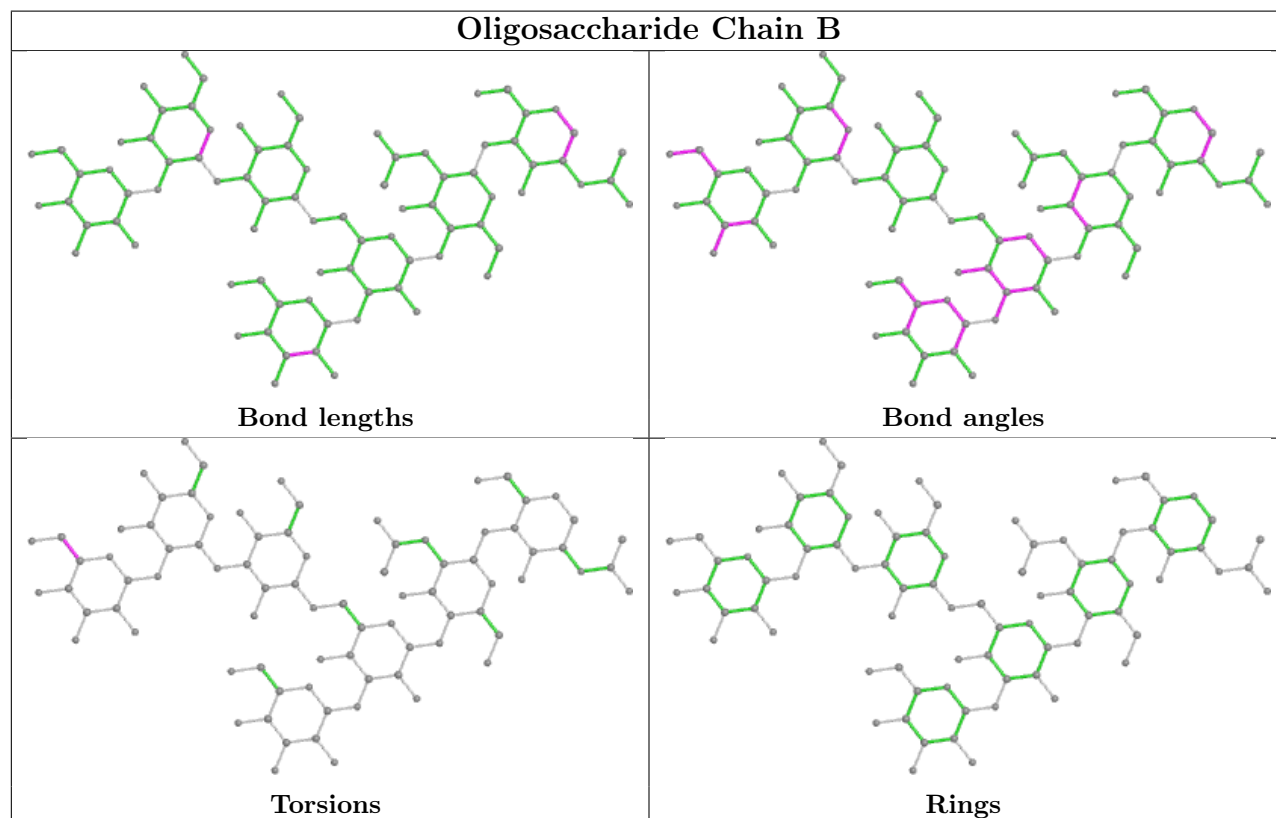
Mol	Chain	Res	Type	Atoms
2	B	6	MAN	O5-C5-C6-O6
2	B	6	MAN	C4-C5-C6-O6
3	C	10	MAN	C4-C5-C6-O6
3	C	9	MAN	C4-C5-C6-O6
3	C	10	MAN	O5-C5-C6-O6
3	C	9	MAN	O5-C5-C6-O6
4	D	2	NAG	C4-C5-C6-O6
4	D	2	NAG	O5-C5-C6-O6

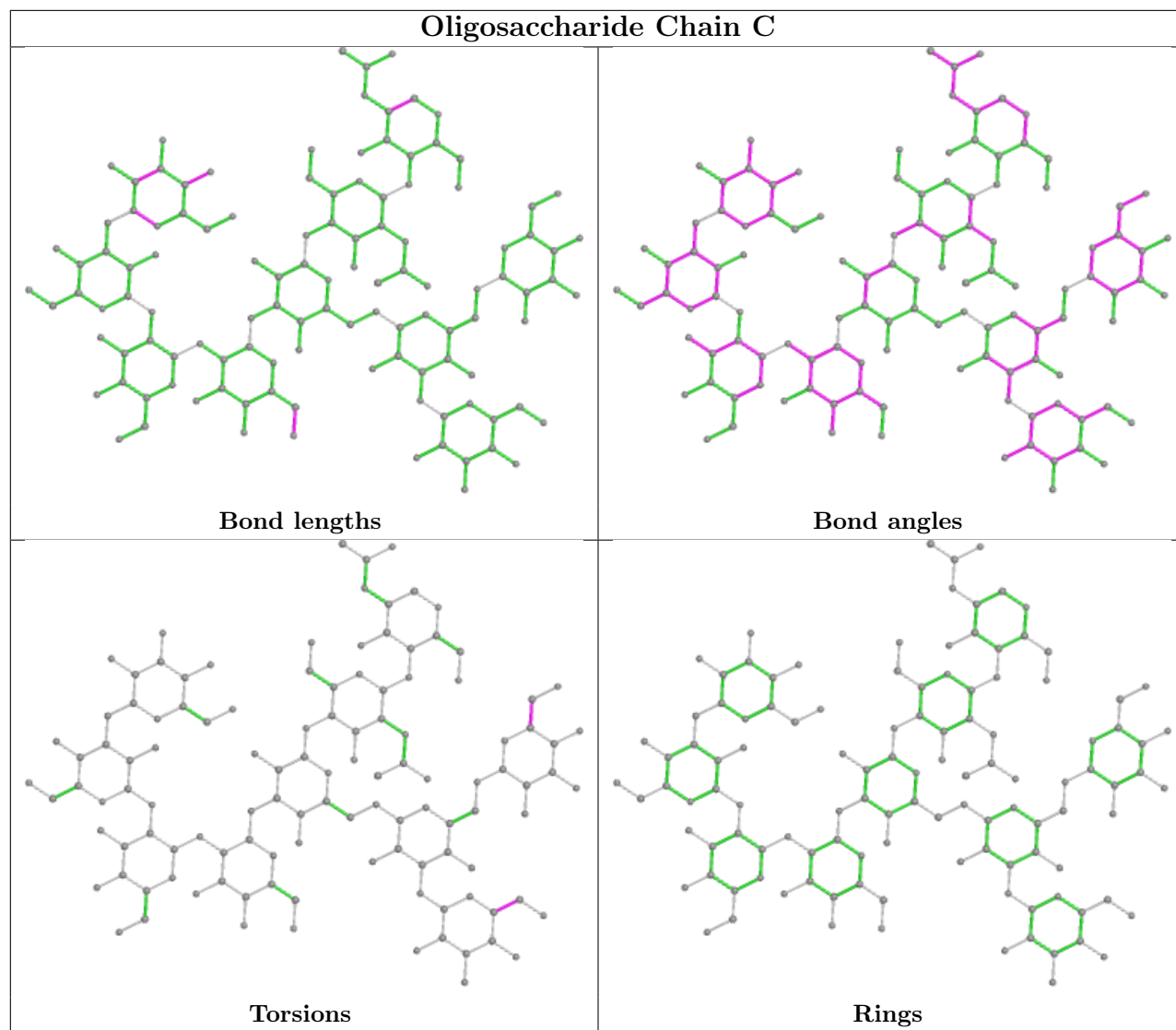
There are no ring outliers.

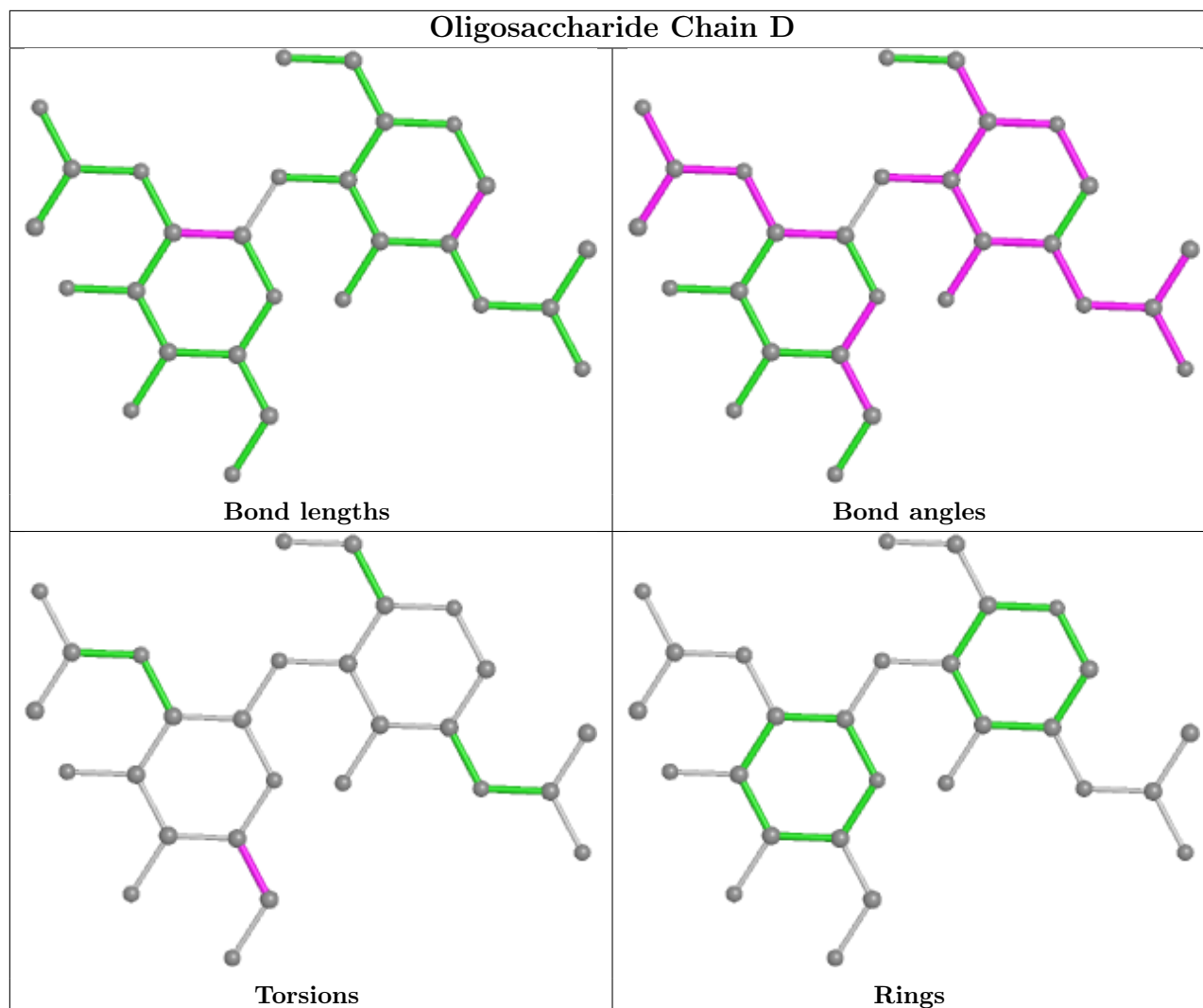
3 monomers are involved in 4 short contacts:

Mol	Chain	Res	Type	Clashes	Symm-Clashes
3	C	7	GLC	1	0
4	D	1	NAG	2	0
2	B	5	MAN	1	0

The following is a two-dimensional graphical depiction of Mogul quality analysis of bond lengths, bond angles, torsion angles, and ring geometry for oligosaccharide.







5.6 Ligand geometry [i](#)

3 ligands are modelled in this entry.

In the following table, the Counts columns list the number of bonds (or angles) for which Mogul statistics could be retrieved, the number of bonds (or angles) that are observed in the model and the number of bonds (or angles) that are defined in the Chemical Component Dictionary. The Link column lists molecule types, if any, to which the group is linked. The Z score for a bond length (or angle) is the number of standard deviations the observed value is removed from the expected value. A bond length (or angle) with $|Z| > 2$ is considered an outlier worth inspection. RMSZ is the root-mean-square of all Z scores of the bond lengths (or angles).

Mol	Type	Chain	Res	Link	Bond lengths			Bond angles		
					Counts	RMSZ	$\# Z > 2$	Counts	RMSZ	$\# Z > 2$
5	GAL	A	1024	-	12,12,12	0.79	0	17,17,17	1.26	1 (5%)
6	NAG	A	1043	1	14,14,15	0.64	0	17,19,21	1.34	2 (11%)
6	NAG	A	1042	1	14,14,15	0.97	0	17,19,21	1.74	4 (23%)

In the following table, the Chirals column lists the number of chiral outliers, the number of chiral centers analysed, the number of these observed in the model and the number defined in the Chemical Component Dictionary. Similar counts are reported in the Torsion and Rings columns. '-' means no outliers of that kind were identified.

Mol	Type	Chain	Res	Link	Chirals	Torsions	Rings
5	GAL	A	1024	-	-	1/2/22/22	0/1/1/1
6	NAG	A	1043	1	-	0/6/23/26	0/1/1/1
6	NAG	A	1042	1	-	1/6/23/26	0/1/1/1

There are no bond length outliers.

All (7) bond angle outliers are listed below:

Mol	Chain	Res	Type	Atoms	Z	Observed(°)	Ideal(°)
6	A	1042	NAG	O6-C6-C5	-4.11	97.20	111.29
5	A	1024	GAL	O1-C1-O5	-4.03	98.28	110.38
6	A	1042	NAG	C1-O5-C5	3.17	116.49	112.19
6	A	1043	NAG	O7-C7-C8	-3.13	116.25	122.06
6	A	1043	NAG	O6-C6-C5	-2.76	101.82	111.29
6	A	1042	NAG	O5-C5-C4	2.48	116.85	110.83
6	A	1042	NAG	O3-C3-C2	-2.14	105.03	109.47

There are no chirality outliers.

All (2) torsion outliers are listed below:

Mol	Chain	Res	Type	Atoms
5	A	1024	GAL	O5-C5-C6-O6
6	A	1042	NAG	C4-C5-C6-O6

There are no ring outliers.

1 monomer is involved in 1 short contact:

Mol	Chain	Res	Type	Clashes	Symm-Clashes
5	A	1024	GAL	1	0

5.7 Other polymers [i](#)

There are no such residues in this entry.

5.8 Polymer linkage issues [i](#)

There are no chain breaks in this entry.

6 Fit of model and data

6.1 Protein, DNA and RNA chains

In the following table, the column labelled ‘#RSRZ> 2’ contains the number (and percentage) of RSRZ outliers, followed by percent RSRZ outliers for the chain as percentile scores relative to all X-ray entries and entries of similar resolution. The OWAB column contains the minimum, median, 95th percentile and maximum values of the occupancy-weighted average B-factor per residue. The column labelled ‘Q< 0.9’ lists the number of (and percentage) of residues with an average occupancy less than 0.9.

Mol	Chain	Analysed	<RSRZ>	#RSRZ>2	OWAB(Å ²)	Q<0.9
1	A	986/1003 (98%)	-0.30	26 (2%) 56 61	6, 11, 24, 45	0

All (26) RSRZ outliers are listed below:

Mol	Chain	Res	Type	RSRZ
1	A	933	ALA	11.7
1	A	523	SER	7.1
1	A	811	TRP	7.0
1	A	932	THR	6.7
1	A	498	ALA	5.9
1	A	525	LYS	5.6
1	A	543	SER	5.6
1	A	526	THR	5.5
1	A	38	ALA	5.5
1	A	890	SER	5.2
1	A	888	SER	4.4
1	A	931	ALA	4.3
1	A	889	SER	4.3
1	A	522	GLY	4.0
1	A	524	SER	3.6
1	A	886	PRO	3.4
1	A	39	LYS	3.1
1	A	545	LEU	3.0
1	A	527	ALA	2.9
1	A	673	GLN	2.7
1	A	891	SER	2.6
1	A	422	LYS	2.6
1	A	901	HIS	2.5
1	A	694	ASN	2.2
1	A	206	GLU	2.2
1	A	616	LYS	2.2

6.2 Non-standard residues in protein, DNA, RNA chains [i](#)

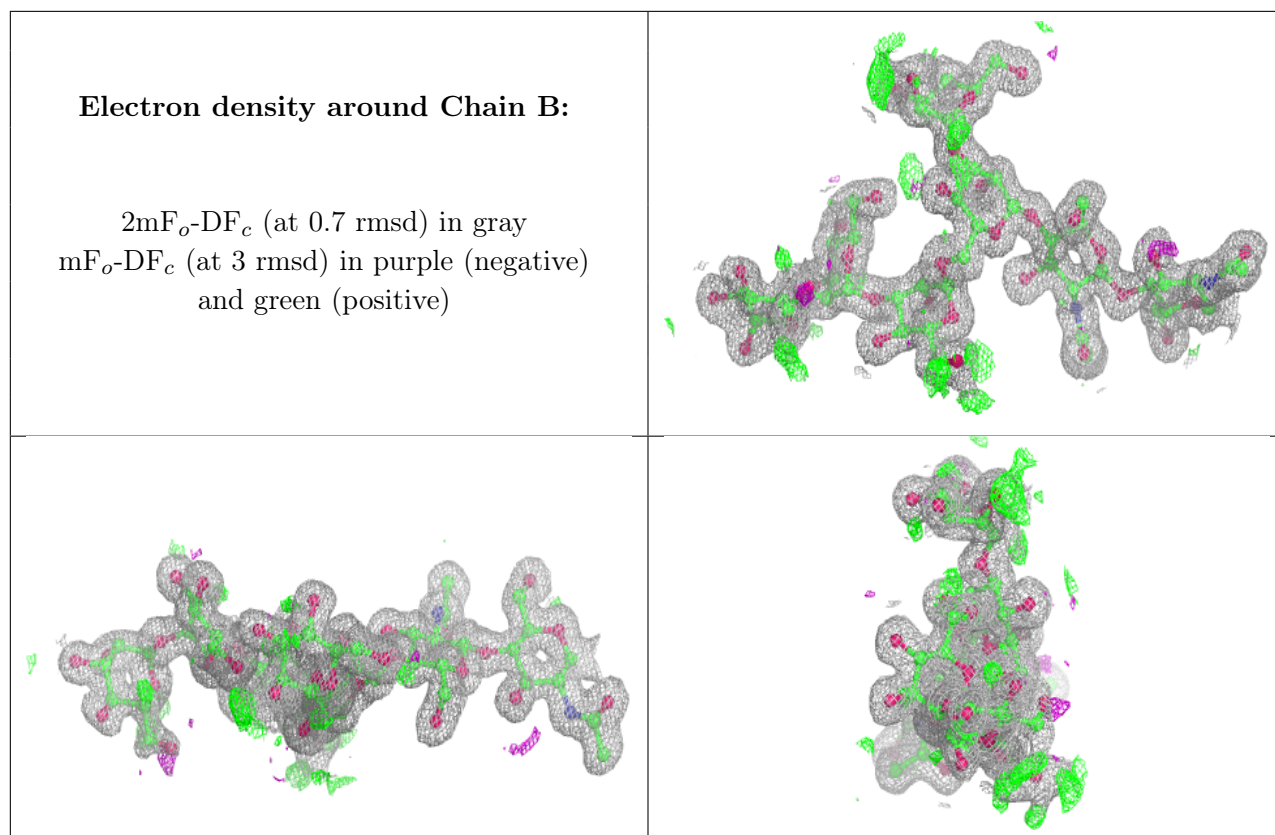
There are no non-standard protein/DNA/RNA residues in this entry.

6.3 Carbohydrates [i](#)

In the following table, the Atoms column lists the number of modelled atoms in the group and the number defined in the chemical component dictionary. The B-factors column lists the minimum, median, 95th percentile and maximum values of B factors of atoms in the group. The column labelled 'Q<0.9' lists the number of atoms with occupancy less than 0.9.

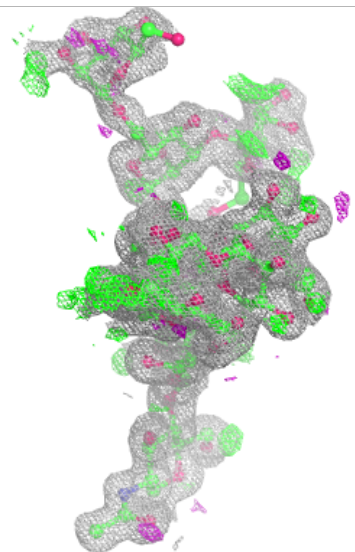
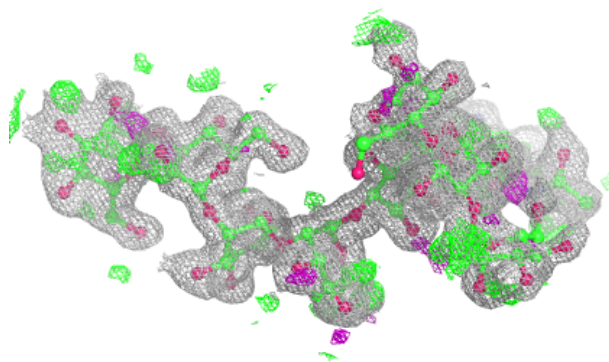
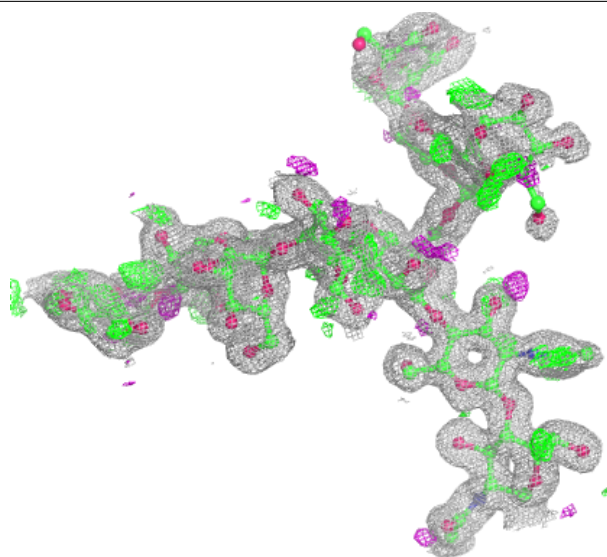
Mol	Type	Chain	Res	Atoms	RSCC	RSR	B-factors(Å ²)	Q<0.9
4	NAG	D	2	14/15	0.62	0.34	40,48,53,54	0
3	MAN	C	9	11/12	0.68	0.32	38,46,49,50	0
3	MAN	C	10	11/12	0.71	0.34	46,48,52,55	0
4	NAG	D	1	14/15	0.82	0.18	25,35,42,43	0
3	GLC	C	7	11/12	0.82	0.16	27,30,32,35	0
3	MAN	C	8	11/12	0.87	0.15	24,30,37,41	0
2	MAN	B	6	11/12	0.92	0.23	22,27,35,41	0
3	NAG	C	2	14/15	0.94	0.10	10,16,26,26	0
3	MAN	C	4	11/12	0.94	0.09	15,18,23,28	0
3	MAN	C	6	11/12	0.94	0.09	13,16,25,25	0
3	NAG	C	1	14/15	0.96	0.07	11,14,20,29	0
2	MAN	B	7	11/12	0.97	0.11	15,17,20,21	0
3	MAN	C	5	11/12	0.97	0.07	13,15,19,22	0
3	BMA	C	3	11/12	0.97	0.06	12,15,17,18	0
2	MAN	B	5	11/12	0.98	0.06	9,10,17,27	0
2	NAG	B	2	14/15	0.98	0.06	7,9,14,15	0
2	BMA	B	3	11/12	0.98	0.06	8,9,14,14	0
2	MAN	B	4	11/12	0.99	0.05	7,9,12,18	0
2	NAG	B	1	14/15	0.99	0.05	8,10,19,20	0

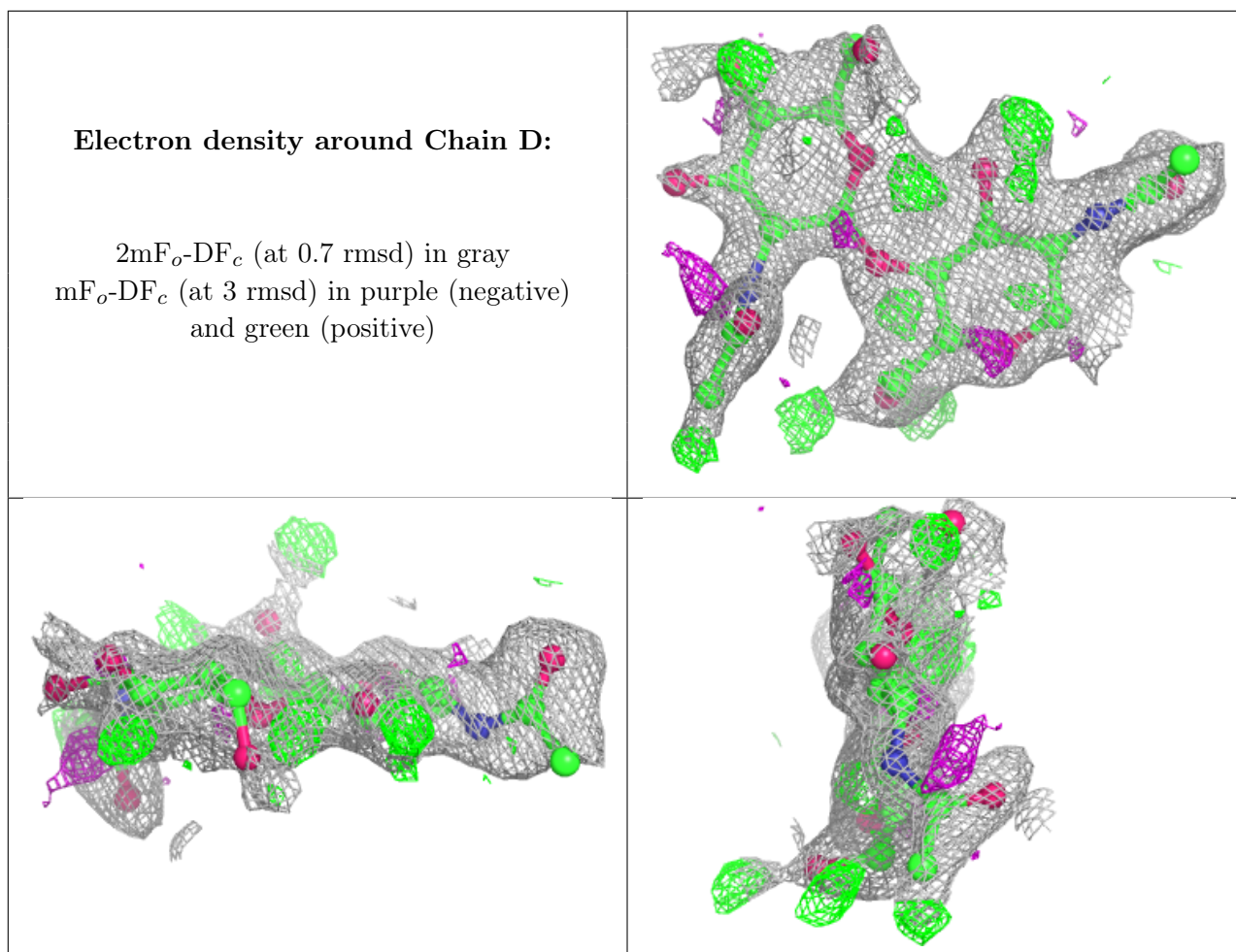
The following is a graphical depiction of the model fit to experimental electron density for oligosaccharide. Each fit is shown from different orientation to approximate a three-dimensional view.



Electron density around Chain C:

$2mF_o-DF_c$ (at 0.7 rmsd) in gray
 mF_o-DF_c (at 3 rmsd) in purple (negative)
and green (positive)





6.4 Ligands [i](#)

In the following table, the Atoms column lists the number of modelled atoms in the group and the number defined in the chemical component dictionary. The B-factors column lists the minimum, median, 95th percentile and maximum values of B factors of atoms in the group. The column labelled 'Q < 0.9' lists the number of atoms with occupancy less than 0.9.

Mol	Type	Chain	Res	Atoms	RSCC	RSR	B-factors(\AA^2)	Q<0.9
6	NAG	A	1042	14/15	0.75	0.25	32,39,45,49	0
6	NAG	A	1043	14/15	0.92	0.20	22,27,34,41	0
5	GAL	A	1024	12/12	0.99	0.05	5,7,10,14	0

6.5 Other polymers [i](#)

There are no such residues in this entry.