



wwPDB EM Validation Summary Report ⓘ

Jul 29, 2021 – 06:04 am BST

PDB ID : 7OH9
EMDB ID : EMD-12897
Title : Nucleosome with TBP and TFIIA bound at SHL -6
Authors : Wang, H.; Cramer, P.
Deposited on : 2021-05-09
Resolution : 3.00 Å(reported)

This is a wwPDB EM Validation Summary Report for a publicly released PDB entry.

We welcome your comments at validation@mail.wwpdb.org

A user guide is available at

<https://www.wwpdb.org/validation/2017/EMValidationReportHelp>

with specific help available everywhere you see the ⓘ symbol.

The following versions of software and data (see [references ⓘ](#)) were used in the production of this report:

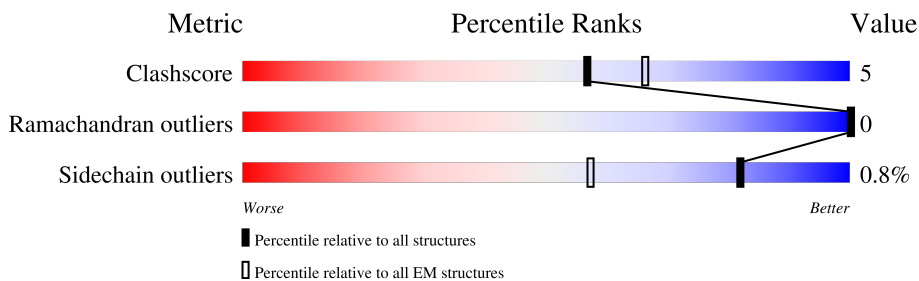
EMDB validation analysis : 0.0.0.dev84
MolProbity : 4.02b-467
Percentile statistics : 20191225.v01 (using entries in the PDB archive December 25th 2019)
Ideal geometry (proteins) : Engh & Huber (2001)
Ideal geometry (DNA, RNA) : Parkinson et al. (1996)
Validation Pipeline (wwPDB-VP) : 2.22

1 Overall quality at a glance i

The following experimental techniques were used to determine the structure:
ELECTRON MICROSCOPY

The reported resolution of this entry is 3.00 Å.

Percentile scores (ranging between 0-100) for global validation metrics of the entry are shown in the following graphic. The table shows the number of entries on which the scores are based.



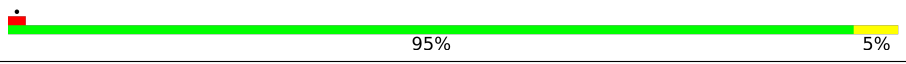

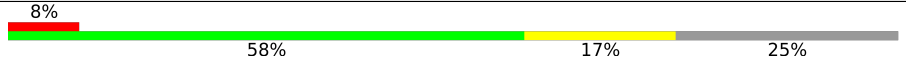
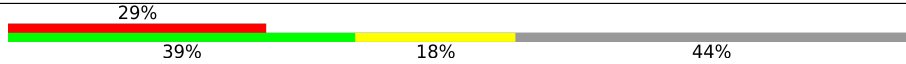
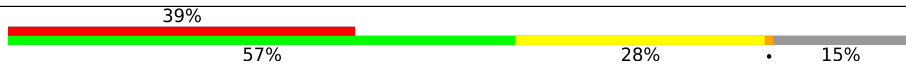
Metric	Whole archive (#Entries)	EM structures (#Entries)
Clashscore	158937	4297
Ramachandran outliers	154571	4023
Sidechain outliers	154315	3826

The table below summarises the geometric issues observed across the polymeric chains and their fit to the map. The red, orange, yellow and green segments of the bar indicate the fraction of residues that contain outliers for ≥ 3 , 2, 1 and 0 types of geometric quality criteria respectively. A grey segment represents the fraction of residues that are not modelled. The numeric value for each fraction is indicated below the corresponding segment, with a dot representing fractions $\leq 5\%$. The upper red bar (where present) indicates the fraction of residues that have poor fit to the EM map (all-atom inclusion $< 40\%$). The numeric value is given above the bar.

Mol	Chain	Length	Quality of chain
1	A	135	
1	E	135	
2	B	102	
2	F	102	
3	C	129	
3	G	129	
4	D	122	
4	H	122	

Continued on next page...

Continued from previous page...

Mol	Chain	Length	Quality of chain
5	I	145	 <p>95% 5%</p>
6	J	145	 <p>85% 15%</p>
7	K	240	 <p>8% 58% 17% 25%</p>
8	L	171	 <p>29% 39% 18% 44%</p>
9	M	122	 <p>39% 57% 28% 15%</p>

2 Entry composition [i](#)

There are 9 unique types of molecules in this entry. The entry contains 15099 atoms, of which 0 are hydrogens and 0 are deuteriums.

In the tables below, the AltConf column contains the number of residues with at least one atom in alternate conformation and the Trace column contains the number of residues modelled with at most 2 atoms.

- Molecule 1 is a protein called Histone H3.2.

Mol	Chain	Residues	Atoms					AltConf	Trace
			Total	C	N	O	S		
1	A	97	802	506	155	138	3	0	0
1	E	98	811	512	157	139	3	0	0

There are 2 discrepancies between the modelled and reference sequences:

Chain	Residue	Modelled	Actual	Comment	Reference
A	102	ALA	GLY	conflict	UNP P84233
E	102	ALA	GLY	conflict	UNP P84233

- Molecule 2 is a protein called Histone H4.

Mol	Chain	Residues	Atoms					AltConf	Trace
			Total	C	N	O	S		
2	B	82	653	412	127	113	1	0	0
2	F	80	638	401	125	111	1	0	0

- Molecule 3 is a protein called Histone H2A.

Mol	Chain	Residues	Atoms				AltConf	Trace
			Total	C	N	O		
3	C	109	843	531	167	145	0	0
3	G	106	818	516	160	142	0	0

- Molecule 4 is a protein called Histone H2B 1.1.

Mol	Chain	Residues	Atoms					AltConf	Trace
			Total	C	N	O	S		
4	D	97	767	481	142	142	2	0	0

Continued on next page...

Continued from previous page...

Mol	Chain	Residues	Atoms					AltConf	Trace
			Total	C	N	O	S		
4	H	95	745	469	134	140	2	0	0

There are 2 discrepancies between the modelled and reference sequences:

Chain	Residue	Modelled	Actual	Comment	Reference
D	29	THR	SER	conflict	UNP P02281
H	29	THR	SER	conflict	UNP P02281

- Molecule 5 is a DNA chain called DNA (145-MER).

Mol	Chain	Residues	Atoms					AltConf	Trace
			Total	C	N	O	P		
5	I	145	2955	1404	537	869	145	0	0

- Molecule 6 is a DNA chain called DNA (145-MER).

Mol	Chain	Residues	Atoms					AltConf	Trace
			Total	C	N	O	P		
6	J	145	2990	1416	558	871	145	0	0

- Molecule 7 is a protein called TATA-binding protein.

Mol	Chain	Residues	Atoms					AltConf	Trace
			Total	C	N	O	S		
7	K	180	1439	936	246	251	6	3	0

- Molecule 8 is a protein called Transcription initiation factor IIA large subunit.

Mol	Chain	Residues	Atoms					AltConf	Trace
			Total	C	N	O	S		
8	L	96	823	516	138	166	3	3	0

There are 115 discrepancies between the modelled and reference sequences:

Chain	Residue	Modelled	Actual	Comment	Reference
L	?	-	ASN	deletion	UNP P32773
L	?	-	GLU	deletion	UNP P32773
L	?	-	GLY	deletion	UNP P32773
L	?	-	LEU	deletion	UNP P32773
L	?	-	ILE	deletion	UNP P32773

Continued on next page...

Continued from previous page...

Chain	Residue	Modelled	Actual	Comment	Reference
L	?	-	LEU	deletion	UNP P32773
L	?	-	PRO	deletion	UNP P32773
L	?	-	ASN	deletion	UNP P32773
L	?	-	ILE	deletion	UNP P32773
L	?	-	ASN	deletion	UNP P32773
L	?	-	SER	deletion	UNP P32773
L	?	-	ASN	deletion	UNP P32773
L	?	-	ASN	deletion	UNP P32773
L	?	-	ASN	deletion	UNP P32773
L	?	-	ILE	deletion	UNP P32773
L	?	-	PRO	deletion	UNP P32773
L	?	-	HIS	deletion	UNP P32773
L	?	-	SER	deletion	UNP P32773
L	?	-	GLY	deletion	UNP P32773
L	?	-	GLU	deletion	UNP P32773
L	?	-	THR	deletion	UNP P32773
L	?	-	ASN	deletion	UNP P32773
L	?	-	ILE	deletion	UNP P32773
L	?	-	ASN	deletion	UNP P32773
L	?	-	THR	deletion	UNP P32773
L	?	-	ASN	deletion	UNP P32773
L	?	-	THR	deletion	UNP P32773
L	?	-	VAL	deletion	UNP P32773
L	?	-	GLU	deletion	UNP P32773
L	?	-	ALA	deletion	UNP P32773
L	?	-	THR	deletion	UNP P32773
L	?	-	ASN	deletion	UNP P32773
L	?	-	ASN	deletion	UNP P32773
L	?	-	SER	deletion	UNP P32773
L	?	-	GLY	deletion	UNP P32773
L	?	-	ALA	deletion	UNP P32773
L	?	-	THR	deletion	UNP P32773
L	?	-	LEU	deletion	UNP P32773
L	?	-	ASN	deletion	UNP P32773
L	?	-	THR	deletion	UNP P32773
L	?	-	ASN	deletion	UNP P32773
L	?	-	THR	deletion	UNP P32773
L	?	-	SER	deletion	UNP P32773
L	?	-	GLY	deletion	UNP P32773
L	?	-	ASN	deletion	UNP P32773
L	?	-	THR	deletion	UNP P32773
L	?	-	ASN	deletion	UNP P32773

Continued on next page...

Continued from previous page...

Chain	Residue	Modelled	Actual	Comment	Reference
L	?	-	ALA	deletion	UNP P32773
L	?	-	ASP	deletion	UNP P32773
L	?	-	VAL	deletion	UNP P32773
L	?	-	THR	deletion	UNP P32773
L	?	-	SER	deletion	UNP P32773
L	?	-	GLN	deletion	UNP P32773
L	?	-	PRO	deletion	UNP P32773
L	?	-	LYS	deletion	UNP P32773
L	?	-	ILE	deletion	UNP P32773
L	?	-	GLU	deletion	UNP P32773
L	?	-	VAL	deletion	UNP P32773
L	?	-	LYS	deletion	UNP P32773
L	?	-	PRO	deletion	UNP P32773
L	?	-	GLU	deletion	UNP P32773
L	?	-	ILE	deletion	UNP P32773
L	?	-	GLU	deletion	UNP P32773
L	?	-	LEU	deletion	UNP P32773
L	?	-	THR	deletion	UNP P32773
L	?	-	ILE	deletion	UNP P32773
L	?	-	ASN	deletion	UNP P32773
L	?	-	ASN	deletion	UNP P32773
L	?	-	ALA	deletion	UNP P32773
L	?	-	ASN	deletion	UNP P32773
L	?	-	ILE	deletion	UNP P32773
L	?	-	THR	deletion	UNP P32773
L	?	-	THR	deletion	UNP P32773
L	?	-	VAL	deletion	UNP P32773
L	?	-	GLU	deletion	UNP P32773
L	?	-	ASN	deletion	UNP P32773
L	?	-	ILE	deletion	UNP P32773
L	?	-	ASP	deletion	UNP P32773
L	?	-	ASP	deletion	UNP P32773
L	?	-	GLU	deletion	UNP P32773
L	?	-	SER	deletion	UNP P32773
L	?	-	GLU	deletion	UNP P32773
L	?	-	LYS	deletion	UNP P32773
L	?	-	LYS	deletion	UNP P32773
L	?	-	ASP	deletion	UNP P32773
L	?	-	ASP	deletion	UNP P32773
L	?	-	GLU	deletion	UNP P32773
L	?	-	GLU	deletion	UNP P32773
L	?	-	LYS	deletion	UNP P32773

Continued on next page...

Continued from previous page...

Chain	Residue	Modelled	Actual	Comment	Reference
L	?	-	GLU	deletion	UNP P32773
L	?	-	GLU	deletion	UNP P32773
L	?	-	ASP	deletion	UNP P32773
L	?	-	VAL	deletion	UNP P32773
L	?	-	GLU	deletion	UNP P32773
L	?	-	LYS	deletion	UNP P32773
L	?	-	THR	deletion	UNP P32773
L	?	-	ARG	deletion	UNP P32773
L	?	-	LYS	deletion	UNP P32773
L	?	-	GLU	deletion	UNP P32773
L	?	-	LYS	deletion	UNP P32773
L	?	-	GLU	deletion	UNP P32773
L	?	-	GLN	deletion	UNP P32773
L	?	-	ILE	deletion	UNP P32773
L	?	-	GLU	deletion	UNP P32773
L	?	-	GLN	deletion	UNP P32773
L	?	-	VAL	deletion	UNP P32773
L	?	-	LYS	deletion	UNP P32773
L	?	-	LEU	deletion	UNP P32773
L	?	-	GLN	deletion	UNP P32773
L	?	-	ALA	deletion	UNP P32773
L	?	-	LYS	deletion	UNP P32773
L	?	-	LYS	deletion	UNP P32773
L	?	-	GLU	deletion	UNP P32773
L	?	-	LYS	deletion	UNP P32773
L	?	-	ARG	deletion	UNP P32773

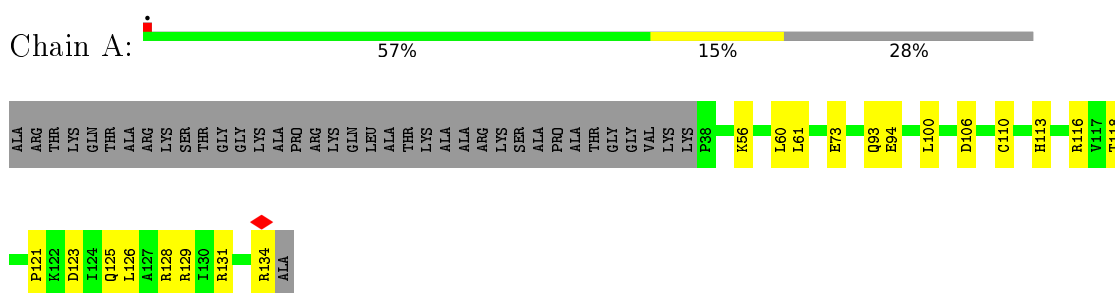
- Molecule 9 is a protein called Transcription initiation factor IIA subunit 2.

Mol	Chain	Residues	Atoms					AltConf	Trace
			Total	C	N	O	S		
9	M	104	815	512	136	163	4	1	0

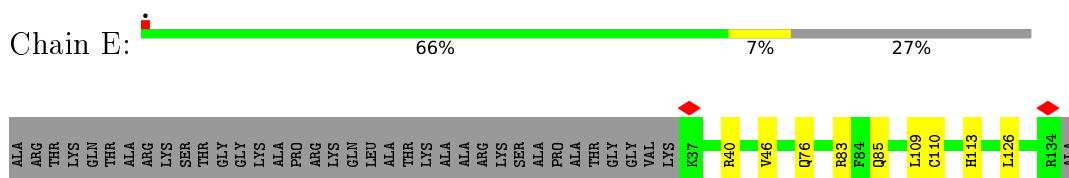
3 Residue-property plots [i](#)

These plots are drawn for all protein, RNA, DNA and oligosaccharide chains in the entry. The first graphic for a chain summarises the proportions of the various outlier classes displayed in the second graphic. The second graphic shows the sequence view annotated by issues in geometry and atom inclusion in map density. Residues are color-coded according to the number of geometric quality criteria for which they contain at least one outlier: green = 0, yellow = 1, orange = 2 and red = 3 or more. A red diamond above a residue indicates a poor fit to the EM map for this residue (all-atom inclusion < 40%). Stretches of 2 or more consecutive residues without any outlier are shown as a green connector. Residues present in the sample, but not in the model, are shown in grey.

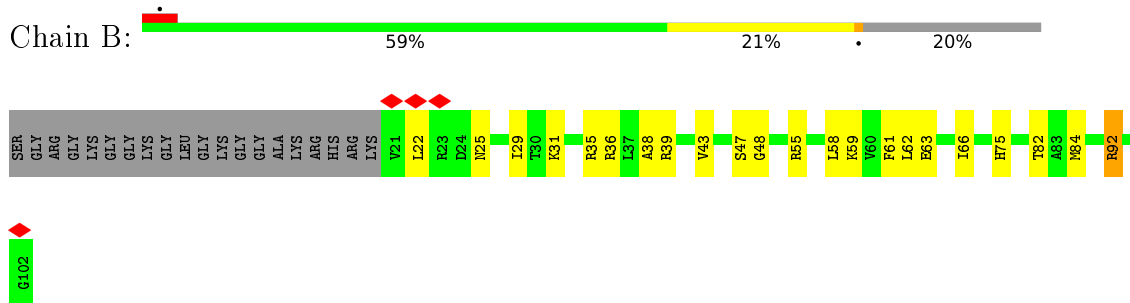
- Molecule 1: Histone H3.2



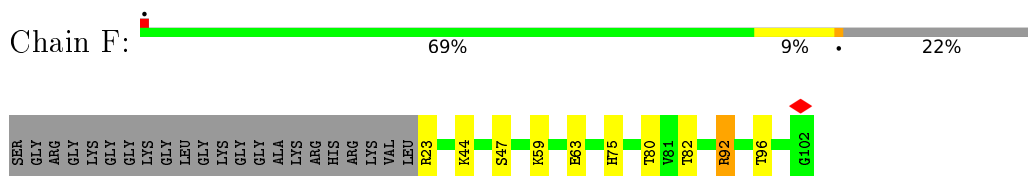
- Molecule 1: Histone H3.2



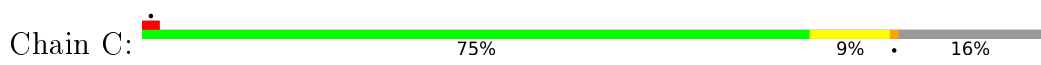
- Molecule 2: Histone H4



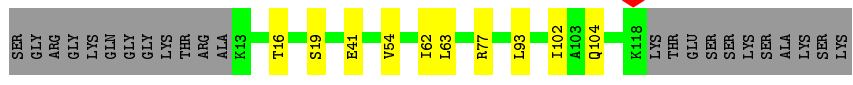
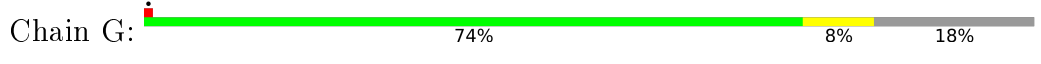
- Molecule 2: Histone H4



- Molecule 3: Histone H2A



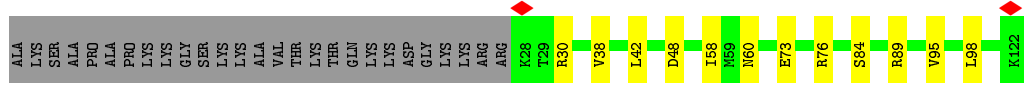
• Molecule 3: Histone H2A



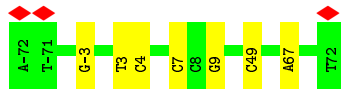
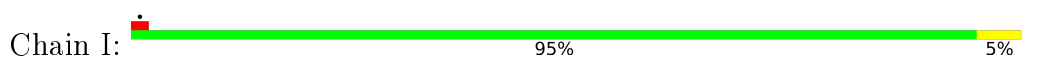
• Molecule 4: Histone H2B 1.1



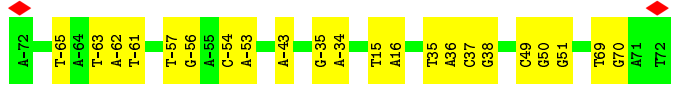
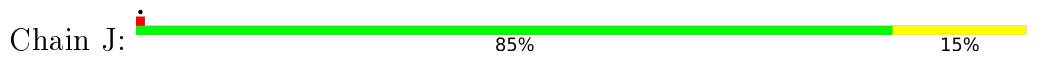
• Molecule 4: Histone H2B 1.1



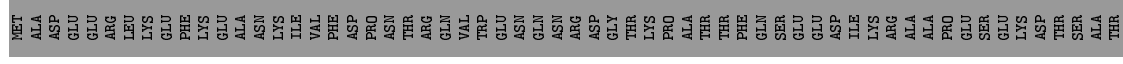
• Molecule 5: DNA (145-MER)

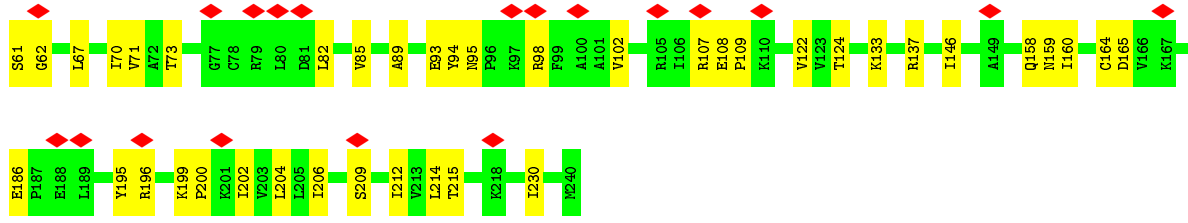


• Molecule 6: DNA (145-MER)

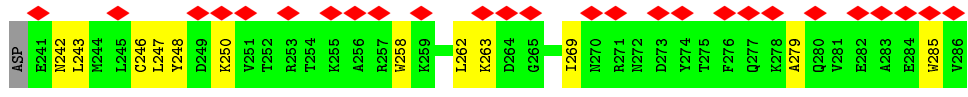
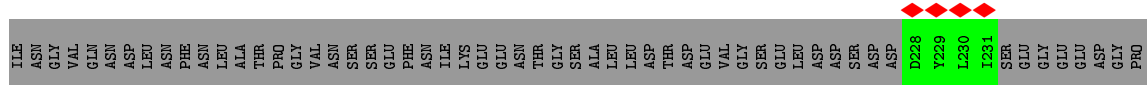
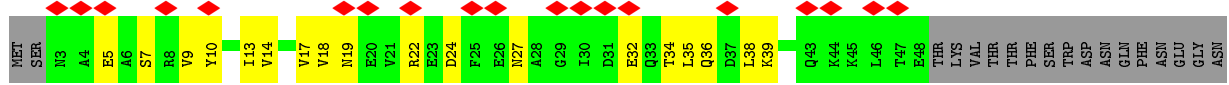
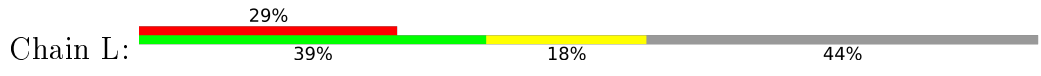


• Molecule 7: TATA-binding protein

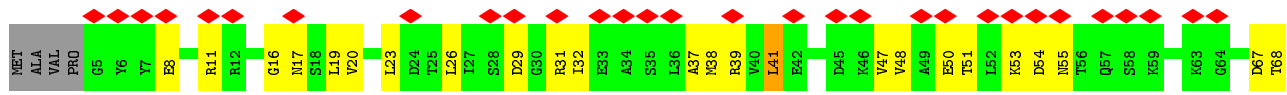
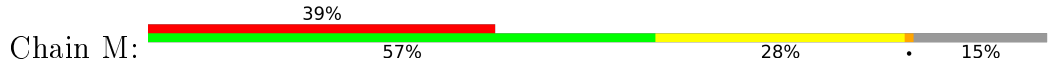




• Molecule 8: Transcription initiation factor IIA large subunit



• Molecule 9: Transcription initiation factor IIA subunit 2



4 Experimental information

Property	Value	Source
EM reconstruction method	SINGLE PARTICLE	Depositor
Imposed symmetry	POINT, Not provided	
Number of particles used	85777	Depositor
Resolution determination method	FSC 0.143 CUT-OFF	Depositor
CTF correction method	PHASE FLIPPING AND AMPLITUDE CORRECTION	Depositor
Microscope	FEI TITAN KRIOS	Depositor
Voltage (kV)	300	Depositor
Electron dose ($e^-/\text{\AA}^2$)	41.2	Depositor
Minimum defocus (nm)	Not provided	
Maximum defocus (nm)	Not provided	
Magnification	Not provided	
Image detector	GATAN K3 (6k x 4k)	Depositor
Maximum map value	0.076	Depositor
Minimum map value	-0.029	Depositor
Average map value	0.000	Depositor
Map value standard deviation	0.003	Depositor
Recommended contour level	0.0125	Depositor
Map size (Å)	209.99998, 209.99998, 209.99998	wwPDB
Map dimensions	200, 200, 200	wwPDB
Map angles (°)	90.0, 90.0, 90.0	wwPDB
Pixel spacing (Å)	1.05, 1.05, 1.05	Depositor

5 Model quality [i](#)

5.1 Standard geometry [i](#)

The Z score for a bond length (or angle) is the number of standard deviations the observed value is removed from the expected value. A bond length (or angle) with $|Z| > 5$ is considered an outlier worth inspection. RMSZ is the root-mean-square of all Z scores of the bond lengths (or angles).

Mol	Chain	Bond lengths		Bond angles	
		RMSZ	# Z >5	RMSZ	# Z >5
1	A	0.40	0/814	0.64	0/1092
1	E	0.39	0/823	0.62	0/1104
2	B	0.39	0/660	0.63	0/883
2	F	0.39	0/645	0.62	0/862
3	C	0.37	0/853	0.65	1/1149 (0.1%)
3	G	0.34	0/828	0.56	0/1117
4	D	0.37	0/778	0.56	1/1043 (0.1%)
4	H	0.34	0/756	0.54	0/1015
5	I	0.70	0/3311	0.94	0/5103
6	J	0.73	0/3357	0.93	0/5184
7	K	0.28	0/1466	0.61	0/1972
8	L	0.35	0/832	0.74	0/1120
9	M	0.32	0/822	0.82	3/1111 (0.3%)
All	All	0.53	0/15945	0.79	5/22755 (0.0%)

Chiral center outliers are detected by calculating the chiral volume of a chiral center and verifying if the center is modelled as a planar moiety or with the opposite hand. A planarity outlier is detected by checking planarity of atoms in a peptide group, atoms in a mainchain group or atoms of a sidechain that are expected to be planar.

Mol	Chain	#Chirality outliers	#Planarity outliers
7	K	0	1
8	L	0	1
All	All	0	2

There are no bond length outliers.

All (5) bond angle outliers are listed below:

Mol	Chain	Res	Type	Atoms	Z	Observed(°)	Ideal(°)
3	C	90	ASP	CB-CG-OD1	6.53	124.18	118.30
9	M	19	LEU	CA-CB-CG	6.36	129.93	115.30
9	M	41	LEU	CA-CB-CG	6.06	129.23	115.30

Continued on next page...

Continued from previous page...

Mol	Chain	Res	Type	Atoms	Z	Observed(°)	Ideal(°)
9	M	19	LEU	CB-CG-CD1	5.33	120.06	111.00
4	D	65	ASP	CB-CG-OD1	5.08	122.87	118.30

There are no chirality outliers.

All (2) planarity outliers are listed below:

Mol	Chain	Res	Type	Group
7	K	186	GLU	Peptide
8	L	19	ASN	Peptide

5.2 Too-close contacts [i](#)

In the following table, the Non-H and H(model) columns list the number of non-hydrogen atoms and hydrogen atoms in the chain respectively. The H(added) column lists the number of hydrogen atoms added and optimized by MolProbity. The Clashes column lists the number of clashes within the asymmetric unit, whereas Symm-Clashes lists symmetry-related clashes.

Mol	Chain	Non-H	H(model)	H(added)	Clashes	Symm-Clashes
1	A	802	0	841	15	0
1	E	811	0	853	10	0
2	B	653	0	696	16	0
2	F	638	0	676	10	0
3	C	843	0	908	10	0
3	G	818	0	877	10	0
4	D	767	0	799	14	0
4	H	745	0	773	11	0
5	I	2955	0	1628	7	0
6	J	2990	0	1629	16	0
7	K	1439	0	1519	26	0
8	L	823	0	799	21	0
9	M	815	0	817	25	0
All	All	15099	0	12815	140	0

The all-atom clashscore is defined as the number of clashes found per 1000 atoms (including hydrogen atoms). The all-atom clashscore for this structure is 5.

The worst 5 of 140 close contacts within the same asymmetric unit are listed below, sorted by their clash magnitude.

Atom-1	Atom-2	Interatomic distance (Å)	Clash overlap (Å)
7:K:85:VAL:HG23	7:K:146:ILE:HG13	1.74	0.69

Continued on next page...

Continued from previous page...

Atom-1	Atom-2	Interatomic distance (Å)	Clash overlap (Å)
1:A:61:LEU:HD12	2:B:36:ARG:HB3	1.79	0.65
8:L:32:GLU:OE1	8:L:36:GLN:NE2	2.29	0.64
3:G:16:THR:HA	6:J:-43:DA:H5"	1.80	0.64
4:H:73:GLU:OE1	4:H:76:ARG:NH2	2.32	0.61

There are no symmetry-related clashes.

5.3 Torsion angles [i](#)

5.3.1 Protein backbone [i](#)

In the following table, the Percentiles column shows the percent Ramachandran outliers of the chain as a percentile score with respect to all PDB entries followed by that with respect to all EM entries.

The Analysed column shows the number of residues for which the backbone conformation was analysed, and the total number of residues.

Mol	Chain	Analysed	Favoured	Allowed	Outliers	Percentiles	
1	A	95/135 (70%)	93 (98%)	2 (2%)	0	100	100
1	E	96/135 (71%)	96 (100%)	0	0	100	100
2	B	80/102 (78%)	78 (98%)	2 (2%)	0	100	100
2	F	78/102 (76%)	77 (99%)	1 (1%)	0	100	100
3	C	107/129 (83%)	105 (98%)	2 (2%)	0	100	100
3	G	104/129 (81%)	102 (98%)	2 (2%)	0	100	100
4	D	95/122 (78%)	94 (99%)	1 (1%)	0	100	100
4	H	93/122 (76%)	90 (97%)	3 (3%)	0	100	100
7	K	181/240 (75%)	176 (97%)	5 (3%)	0	100	100
8	L	93/171 (54%)	85 (91%)	8 (9%)	0	100	100
9	M	101/122 (83%)	97 (96%)	4 (4%)	0	100	100
All	All	1123/1509 (74%)	1093 (97%)	30 (3%)	0	100	100

There are no Ramachandran outliers to report.

5.3.2 Protein sidechains [i](#)

In the following table, the Percentiles column shows the percent sidechain outliers of the chain as a percentile score with respect to all PDB entries followed by that with respect to all EM entries.

The Analysed column shows the number of residues for which the sidechain conformation was analysed, and the total number of residues.

Mol	Chain	Analysed	Rotameric	Outliers	Percentiles	
1	A	85/110 (77%)	84 (99%)	1 (1%)	71	90
1	E	86/110 (78%)	86 (100%)	0	100	100
2	B	67/78 (86%)	66 (98%)	1 (2%)	65	87
2	F	65/78 (83%)	64 (98%)	1 (2%)	65	87
3	C	86/101 (85%)	85 (99%)	1 (1%)	71	90
3	G	84/101 (83%)	84 (100%)	0	100	100
4	D	83/102 (81%)	83 (100%)	0	100	100
4	H	81/102 (79%)	80 (99%)	1 (1%)	71	90
7	K	155/205 (76%)	155 (100%)	0	100	100
8	L	91/154 (59%)	89 (98%)	2 (2%)	52	81
9	M	93/108 (86%)	92 (99%)	1 (1%)	73	90
All	All	976/1249 (78%)	968 (99%)	8 (1%)	82	93

5 of 8 residues with a non-rotameric sidechain are listed below:

Mol	Chain	Res	Type
9	M	53	LYS
8	L	263	LYS
4	H	60	ASN
2	F	92	ARG
8	L	250	LYS

Sometimes sidechains can be flipped to improve hydrogen bonding and reduce clashes. All (3) such sidechains are listed below:

Mol	Chain	Res	Type
3	C	73	ASN
1	E	68	GLN
3	G	104	GLN

5.3.3 RNA [i](#)

There are no RNA molecules in this entry.

5.4 Non-standard residues in protein, DNA, RNA chains [i](#)

There are no non-standard protein/DNA/RNA residues in this entry.

5.5 Carbohydrates [i](#)

There are no monosaccharides in this entry.

5.6 Ligand geometry [i](#)

There are no ligands in this entry.

5.7 Other polymers [i](#)

There are no such residues in this entry.

5.8 Polymer linkage issues [i](#)

There are no chain breaks in this entry.

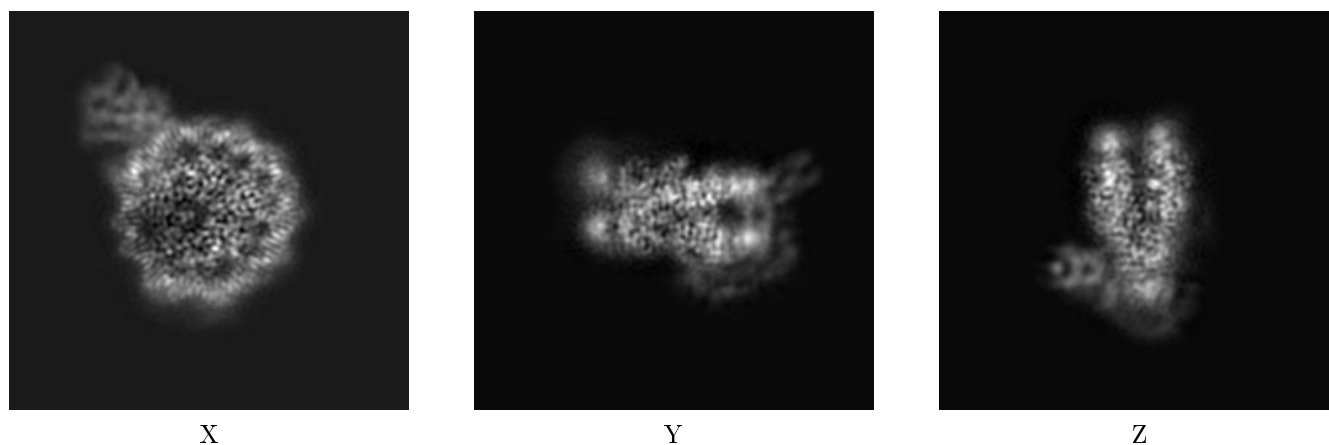
6 Map visualisation [i](#)

This section contains visualisations of the EMDB entry EMD-12897. These allow visual inspection of the internal detail of the map and identification of artifacts.

No raw map or half-maps were deposited for this entry and therefore no images, graphs, etc. pertaining to the raw map can be shown.

6.1 Orthogonal projections [i](#)

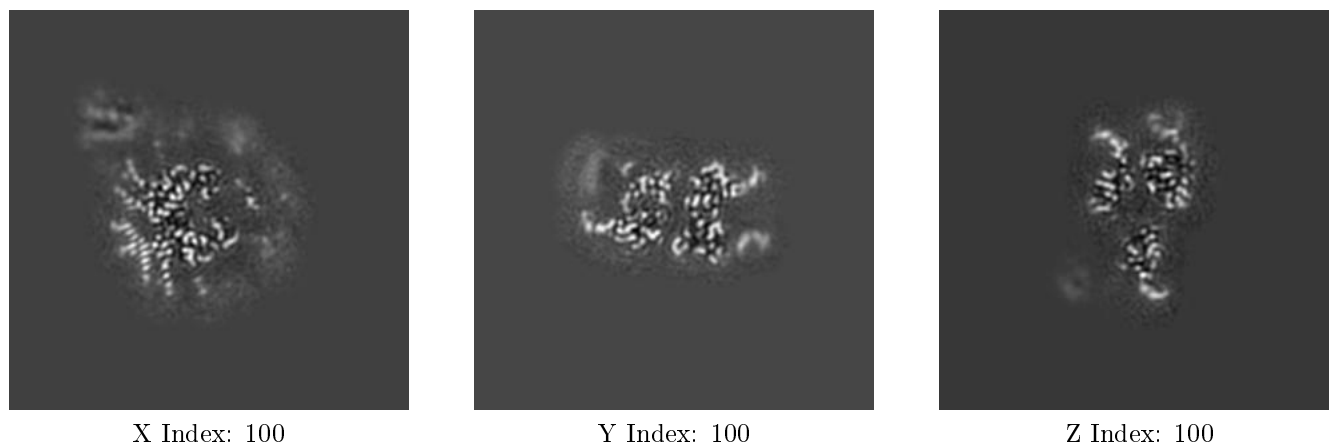
6.1.1 Primary map



The images above show the map projected in three orthogonal directions.

6.2 Central slices [i](#)

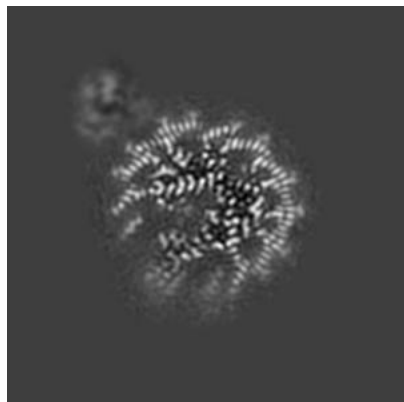
6.2.1 Primary map



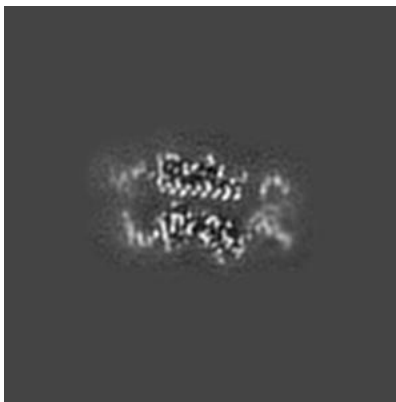
The images above show central slices of the map in three orthogonal directions.

6.3 Largest variance slices [i](#)

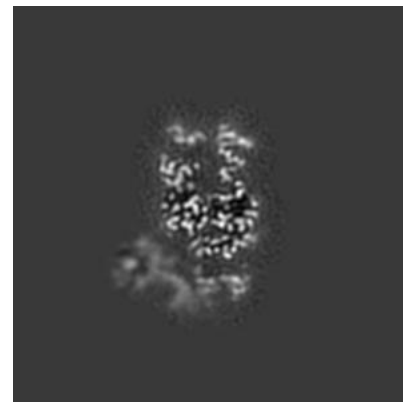
6.3.1 Primary map



X Index: 110



Y Index: 112

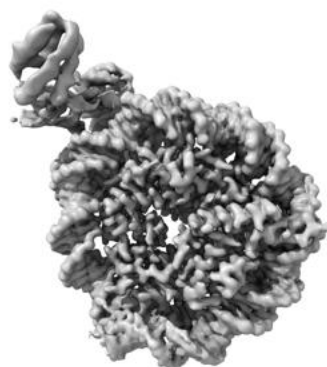


Z Index: 118

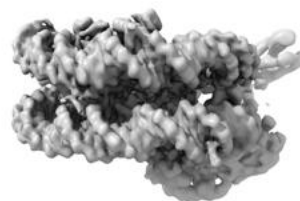
The images above show the largest variance slices of the map in three orthogonal directions.

6.4 Orthogonal surface views [i](#)

6.4.1 Primary map



X



Y



Z

The images above show the 3D surface view of the map at the recommended contour level 0.0125. These images, in conjunction with the slice images, may facilitate assessment of whether an appropriate contour level has been provided.

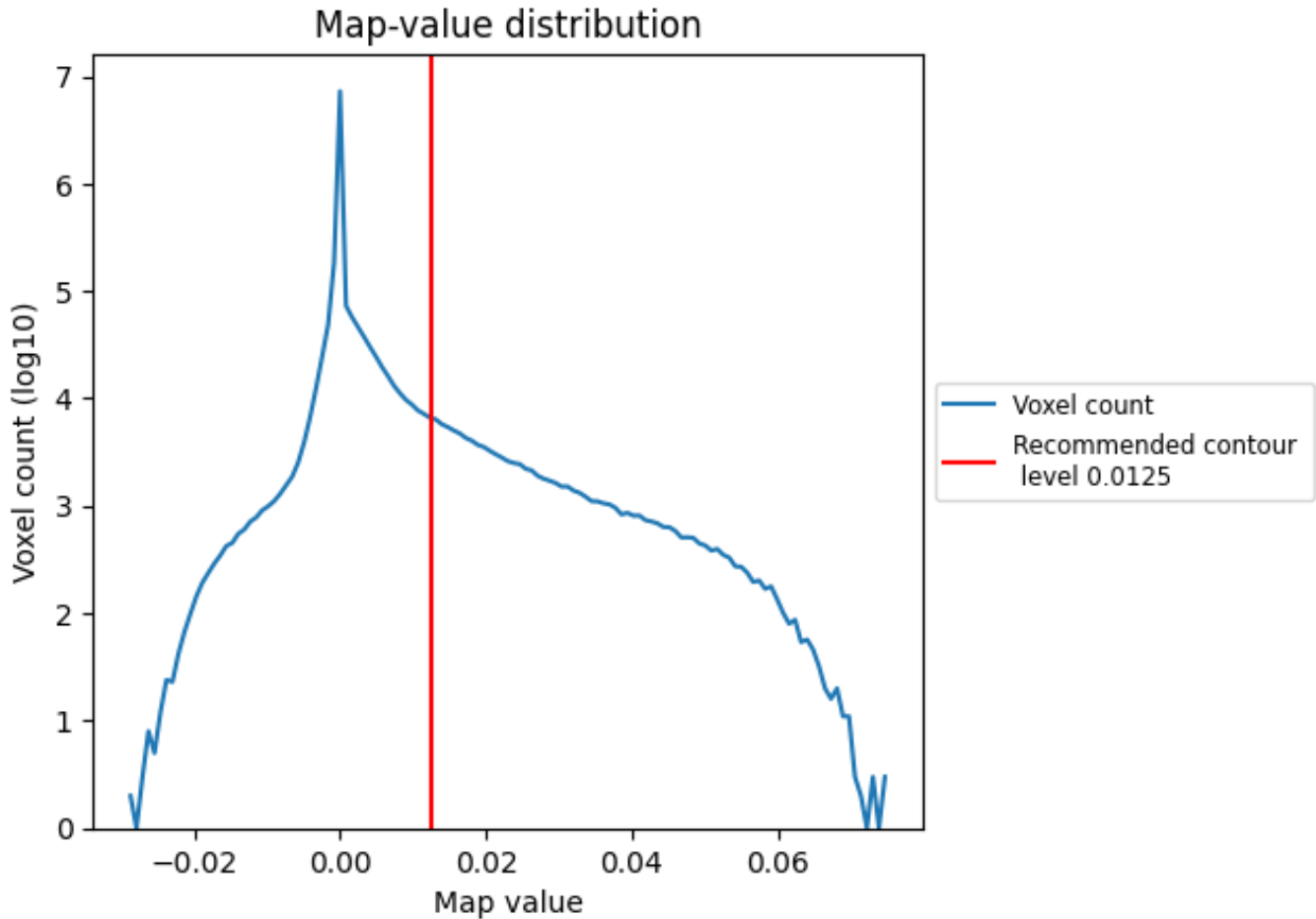
6.5 Mask visualisation

This section was not generated. No masks/segmentation were deposited.

7 Map analysis [i](#)

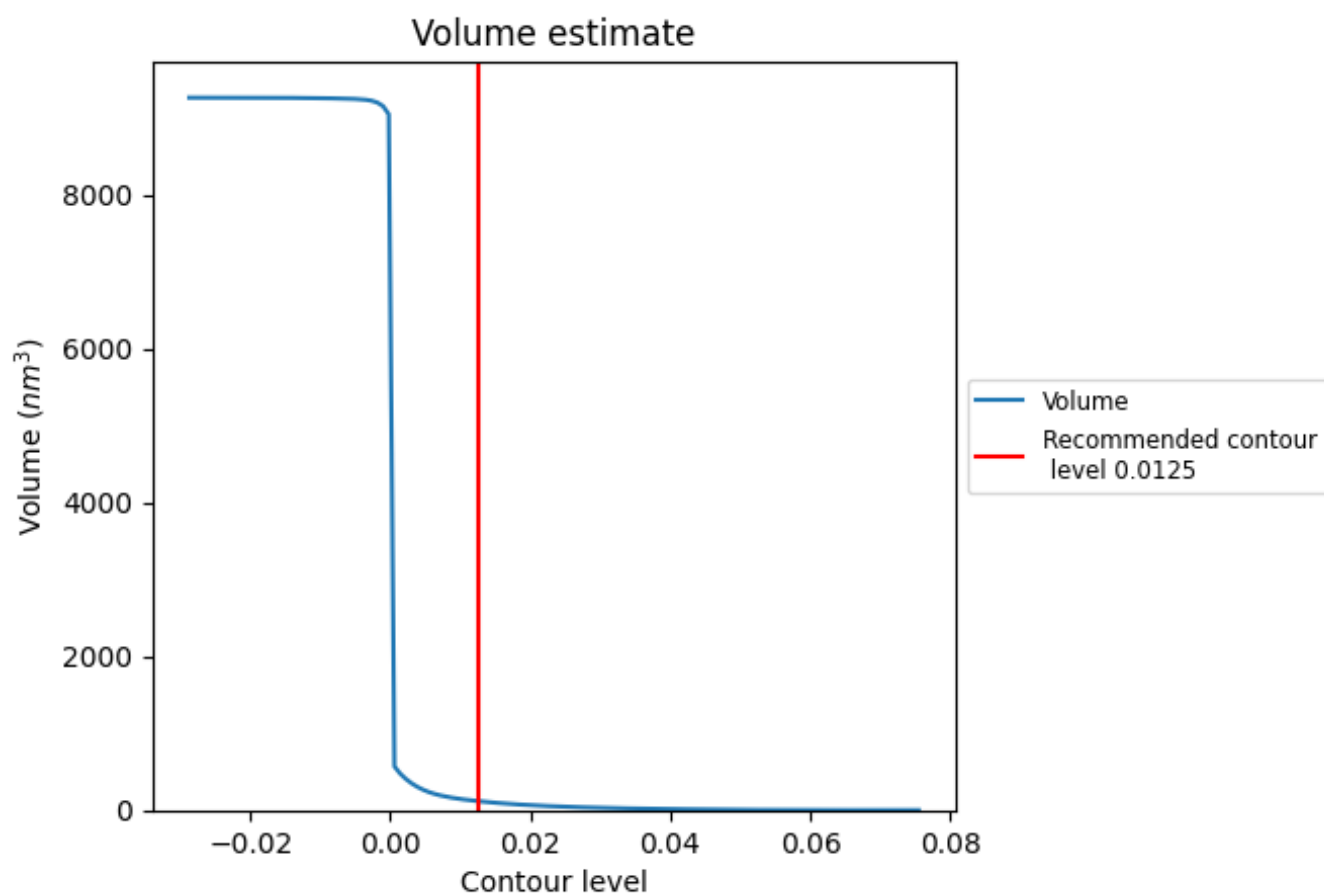
This section contains the results of statistical analysis of the map.

7.1 Map-value distribution [i](#)



The map-value distribution is plotted in 128 intervals along the x-axis. The y-axis is logarithmic. A spike in this graph at zero usually indicates that the volume has been masked.

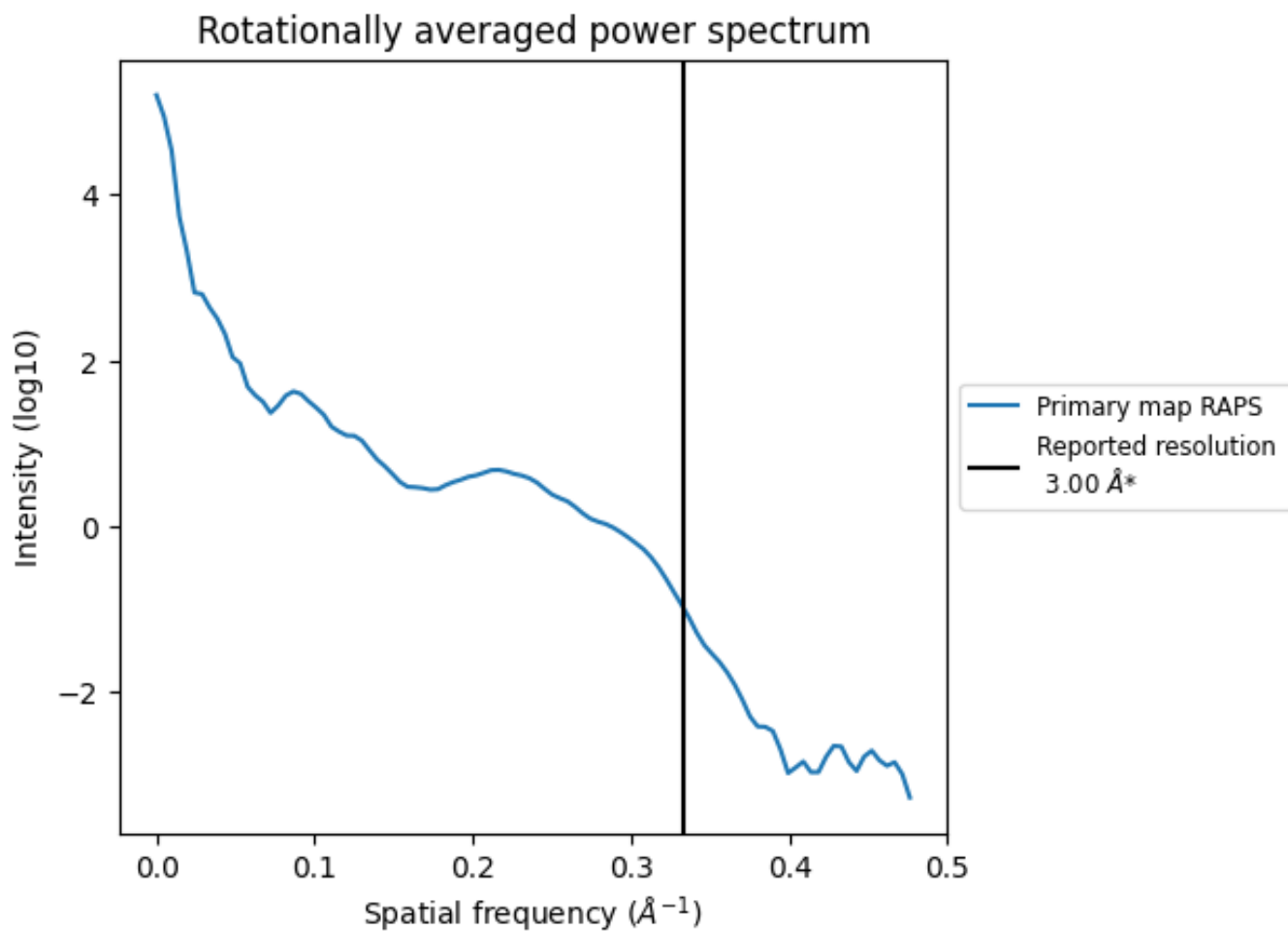
7.2 Volume estimate [\(i\)](#)



The volume at the recommended contour level is 118 nm^3 ; this corresponds to an approximate mass of 106 kDa.

The volume estimate graph shows how the enclosed volume varies with the contour level. The recommended contour level is shown as a vertical line and the intersection between the line and the curve gives the volume of the enclosed surface at the given level.

7.3 Rotationally averaged power spectrum [i](#)

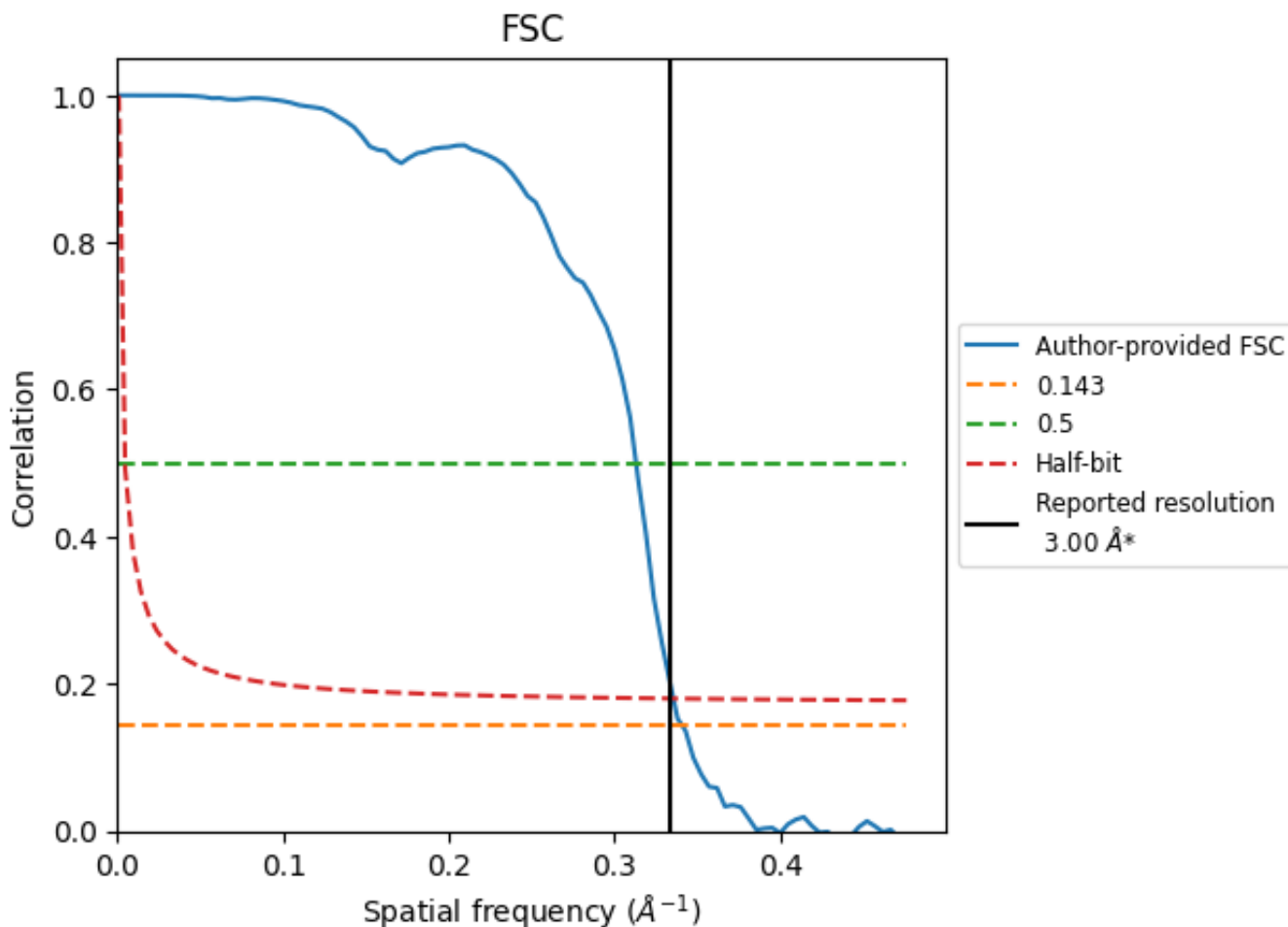


*Reported resolution corresponds to spatial frequency of 0.333 Å⁻¹

8 Fourier-Shell correlation [\(i\)](#)

Fourier-Shell Correlation (FSC) is the most commonly used method to estimate the resolution of single-particle and subtomogram-averaged maps. The shape of the curve depends on the imposed symmetry, mask and whether or not the two 3D reconstructions used were processed from a common reference. The reported resolution is shown as a black line. A curve is displayed for the half-bit criterion in addition to lines showing the 0.143 gold standard cut-off and 0.5 cut-off.

8.1 FSC [\(i\)](#)



*Reported resolution corresponds to spatial frequency of 0.333 Å⁻¹

8.2 Resolution estimates [i](#)

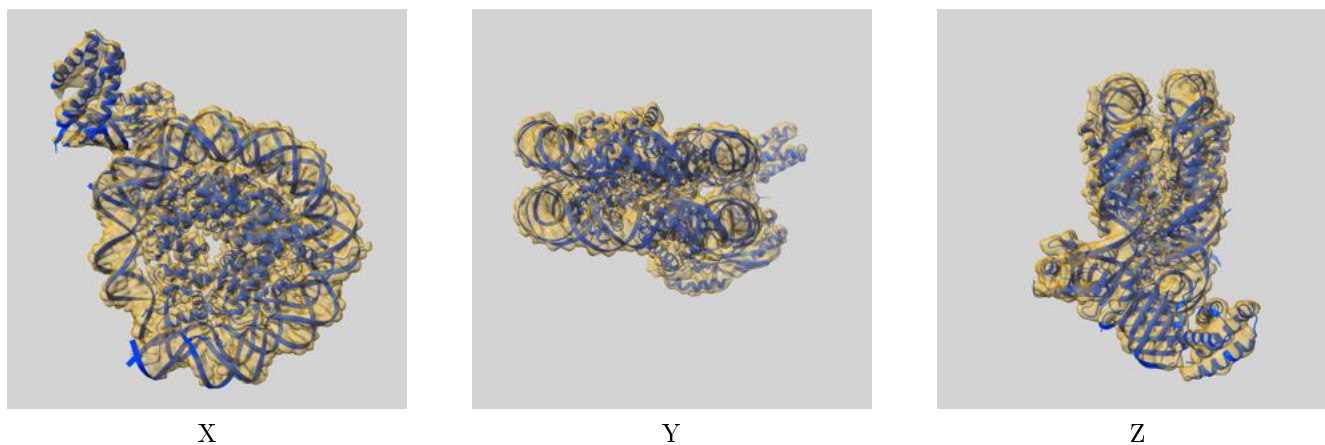
Resolution estimate (Å)	Estimation criterion (FSC cut-off)		
	0.143	0.5	Half-bit
Reported by author	3.00	-	-
Author-provided FSC curve	2.93	3.19	2.98
Calculated*	-	-	-

*Resolution estimate based on FSC curve calculated by comparison of deposited half-maps.

9 Map-model fit [i](#)

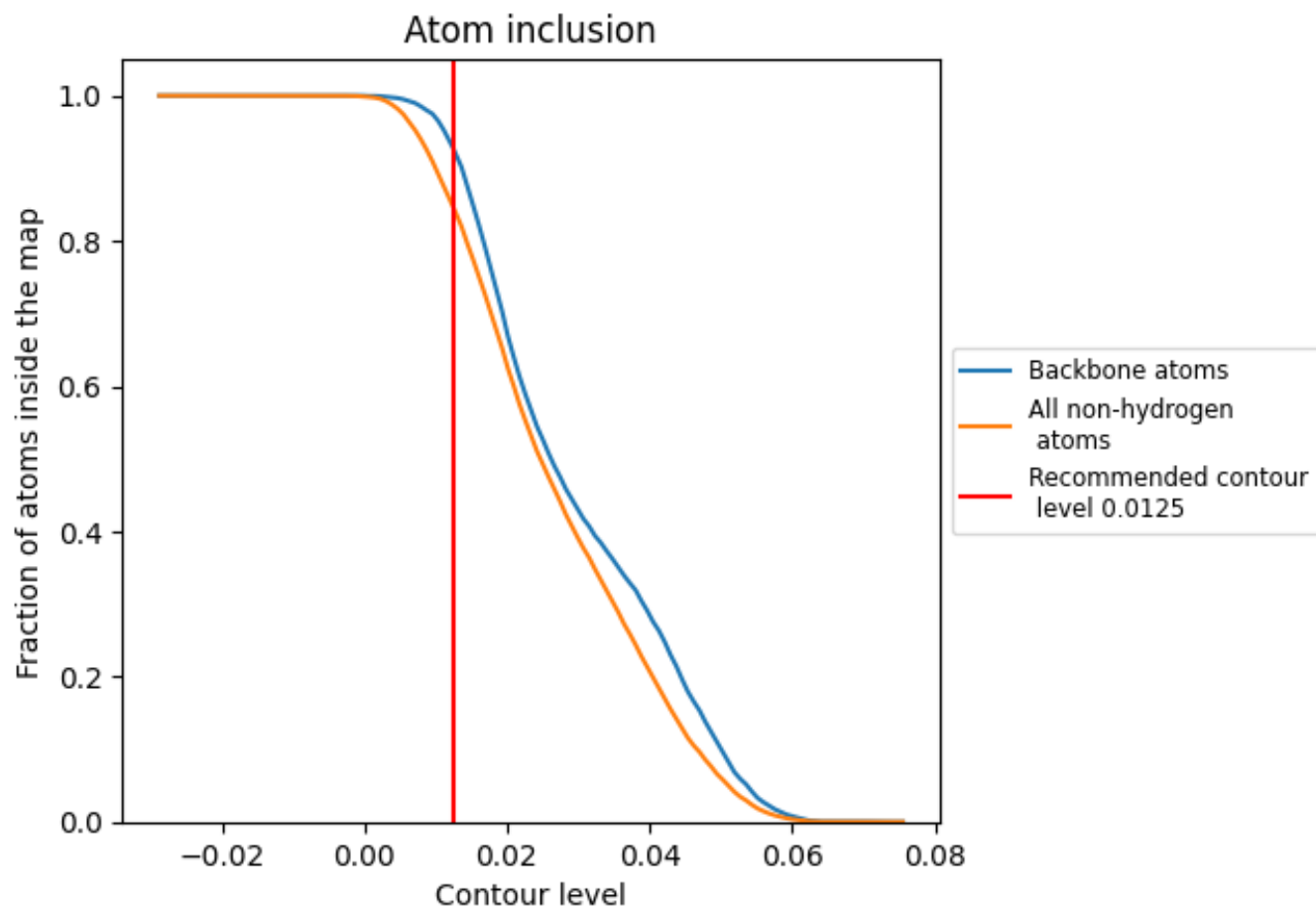
This section contains information regarding the fit between EMDB map EMD-12897 and PDB model 7OH9. Per-residue inclusion information can be found in section 3 on page 9.

9.1 Map-model overlay [i](#)



The images above show the 3D surface view of the map at the recommended contour level 0.0125 at 50% transparency in yellow overlaid with a ribbon representation of the model coloured in blue. These images allow for the visual assessment of the quality of fit between the atomic model and the map.

9.2 Atom inclusion [i](#)



At the recommended contour level, 93% of all backbone atoms, 85% of all non-hydrogen atoms, are inside the map.