



# Full wwPDB X-ray Structure Validation Report ⓘ

Dec 16, 2023 – 02:51 PM EST

PDB ID : 2OK6  
Title : Crystal structure of aromatic amine dehydrogenase TTQ-formamide adduct oxidized with ferricyanide.  
Authors : Roujeinikova, A.; Leys, D.  
Deposited on : 2007-01-16  
Resolution : 1.45 Å(reported)

This is a Full wwPDB X-ray Structure Validation Report for a publicly released PDB entry.

We welcome your comments at [validation@mail.wwpdb.org](mailto:validation@mail.wwpdb.org)

A user guide is available at

<https://www.wwpdb.org/validation/2017/XrayValidationReportHelp>

with specific help available everywhere you see the ⓘ symbol.

The types of validation reports are described at

<http://www.wwpdb.org/validation/2017/FAQs#types>.

---

The following versions of software and data (see [references ⓘ](#)) were used in the production of this report:

MolProbity : 4.02b-467  
Mogul : 1.8.5 (274361), CSD as541be (2020)  
Xtriage (Phenix) : 1.13  
EDS : 2.36  
Percentile statistics : 20191225.v01 (using entries in the PDB archive December 25th 2019)  
Refmac : 5.8.0158  
CCP4 : 7.0.044 (Gargrove)  
Ideal geometry (proteins) : Engh & Huber (2001)  
Ideal geometry (DNA, RNA) : Parkinson et al. (1996)  
Validation Pipeline (wwPDB-VP) : 2.36

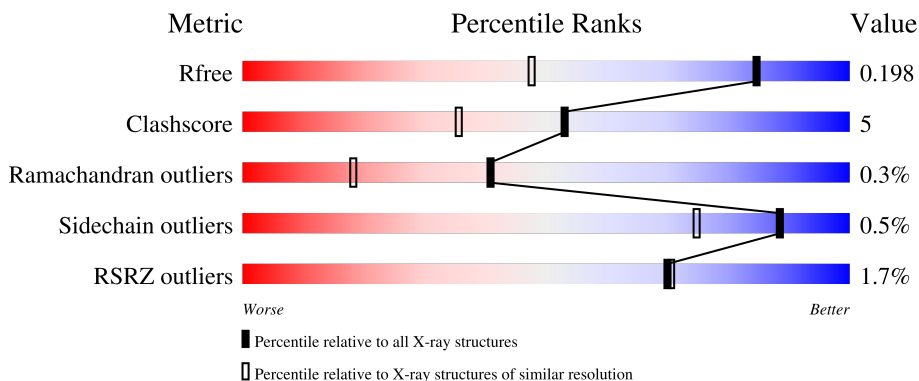
# 1 Overall quality at a glance

The following experimental techniques were used to determine the structure:

*X-RAY DIFFRACTION*

The reported resolution of this entry is 1.45 Å.

Percentile scores (ranging between 0-100) for global validation metrics of the entry are shown in the following graphic. The table shows the number of entries on which the scores are based.



Metric	Whole archive (#Entries)	Similar resolution (#Entries, resolution range(Å))
$R_{free}$	130704	1156 (1.46-1.46)
Clashscore	141614	1202 (1.46-1.46)
Ramachandran outliers	138981	1178 (1.46-1.46)
Sidechain outliers	138945	1178 (1.46-1.46)
RSRZ outliers	127900	1139 (1.46-1.46)

The table below summarises the geometric issues observed across the polymeric chains and their fit to the electron density. The red, orange, yellow and green segments of the lower bar indicate the fraction of residues that contain outliers for  $\geq 3$ , 2, 1 and 0 types of geometric quality criteria respectively. A grey segment represents the fraction of residues that are not modelled. The numeric value for each fraction is indicated below the corresponding segment, with a dot representing fractions  $\leq 5\%$ . The upper red bar (where present) indicates the fraction of residues that have poor fit to the electron density. The numeric value is given above the bar.

Mol	Chain	Length	Quality of chain
1	D	136	
1	H	136	
2	A	361	
2	B	361	

## 2 Entry composition [i](#)

There are 4 unique types of molecules in this entry. The entry contains 9130 atoms, of which 0 are hydrogens and 0 are deuteriums.

In the tables below, the ZeroOcc column contains the number of atoms modelled with zero occupancy, the AltConf column contains the number of residues with at least one atom in alternate conformation and the Trace column contains the number of residues modelled with at most 2 atoms.

- Molecule 1 is a protein called Aromatic amine dehydrogenase, small subunit.

Mol	Chain	Residues	Atoms					ZeroOcc	AltConf	Trace
			Total	C	N	O	S			
1	D	110	869	535	152	167	15	0	2	0
1	H	120	952	585	166	186	15	0	5	0

There are 2 discrepancies between the modelled and reference sequences:

Chain	Residue	Modelled	Actual	Comment	Reference
H	109	TQQ	TRP	modified residue	UNP Q0VKG6
D	109	TQQ	TRP	modified residue	UNP Q0VKG6

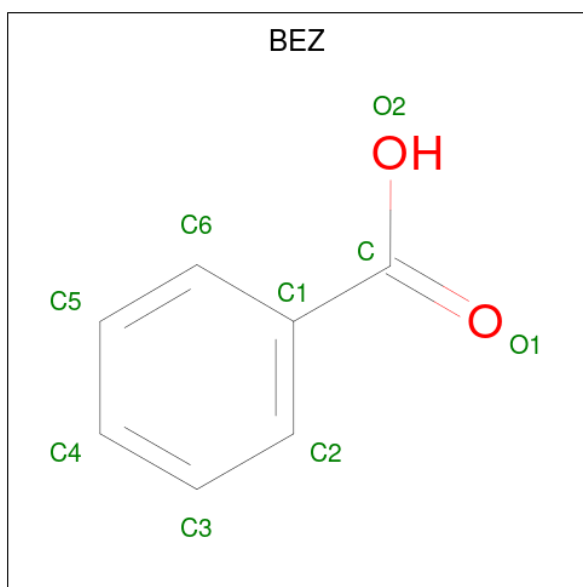
- Molecule 2 is a protein called Aromatic amine dehydrogenase, large subunit.

Mol	Chain	Residues	Atoms					ZeroOcc	AltConf	Trace
			Total	C	N	O	S			
2	A	359	2805	1770	487	534	14	0	2	0
2	B	360	2803	1768	487	534	14	0	2	0

There are 2 discrepancies between the modelled and reference sequences:

Chain	Residue	Modelled	Actual	Comment	Reference
A	433	THR	-	insertion	UNP Q0VKG7
B	433	THR	-	insertion	UNP Q0VKG7

- Molecule 3 is BENZOIC ACID (three-letter code: BEZ) (formula: C<sub>7</sub>H<sub>6</sub>O<sub>2</sub>).



Mol	Chain	Residues	Atoms	ZeroOcc	AltConf
3	D	1	Total C O 8 7 1	0	0
3	H	1	Total C O 8 7 1	0	0

- Molecule 4 is water.

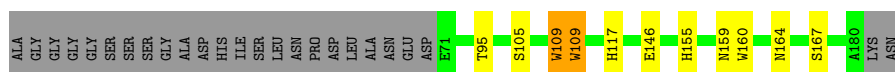
Mol	Chain	Residues	Atoms	ZeroOcc	AltConf
4	D	180	Total O 180 180	0	1
4	H	179	Total O 179 179	0	1
4	A	701	Total O 701 701	0	0
4	B	625	Total O 625 625	0	0

### 3 Residue-property plots [i](#)


These plots are drawn for all protein, RNA, DNA and oligosaccharide chains in the entry. The first graphic for a chain summarises the proportions of the various outlier classes displayed in the second graphic. The second graphic shows the sequence view annotated by issues in geometry and electron density. Residues are color-coded according to the number of geometric quality criteria for which they contain at least one outlier: green = 0, yellow = 1, orange = 2 and red = 3 or more. A red dot above a residue indicates a poor fit to the electron density ( $RSRZ > 2$ ). Stretches of 2 or more consecutive residues without any outlier are shown as a green connector. Residues present in the sample, but not in the model, are shown in grey.

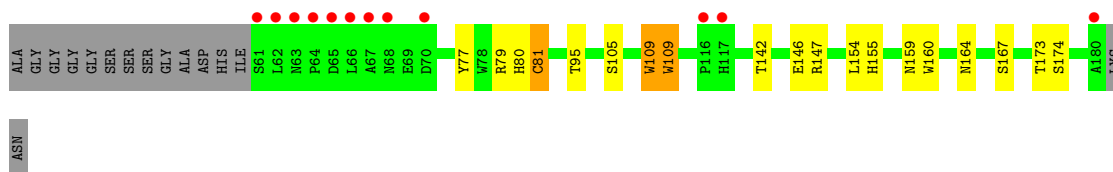
- Molecule 1: Aromatic amine dehydrogenase, small subunit

Chain D: 




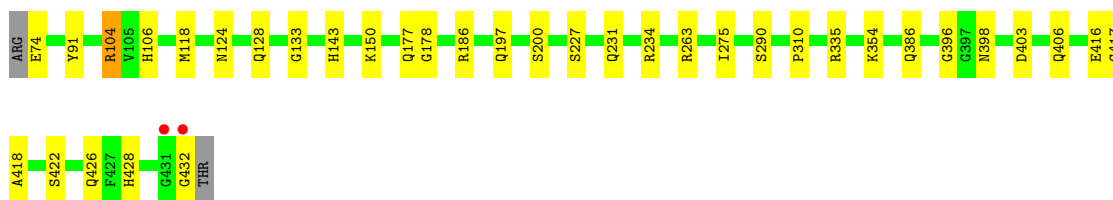
- Molecule 1: Aromatic amine dehydrogenase, small subunit

Chain H: 




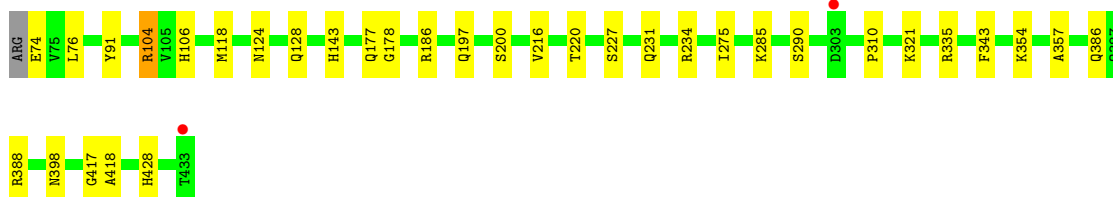
- Molecule 2: Aromatic amine dehydrogenase, large subunit

Chain A: 



- Molecule 2: Aromatic amine dehydrogenase, large subunit

Chain B: 



## 4 Data and refinement statistics

Property	Value	Source
Space group	P 1 21 1	Depositor
Cell constants a, b, c, $\alpha$ , $\beta$ , $\gamma$	70.34Å 89.27Å 80.49Å 90.00° 90.59° 90.00°	Depositor
Resolution (Å)	15.00 – 1.45 20.05 – 1.45	Depositor EDS
% Data completeness (in resolution range)	100.0 (15.00-1.45) 97.7 (20.05-1.45)	Depositor EDS
$R_{merge}$	(Not available)	Depositor
$R_{sym}$	(Not available)	Depositor
$\langle I/\sigma(I) \rangle$ <sup>1</sup>	2.02 (at 1.45Å)	Xtrriage
Refinement program	REFMAC 5.2.0005	Depositor
R, $R_{free}$	0.161 , 0.192 0.170 , 0.198	Depositor DCC
$R_{free}$ test set	8530 reflections (5.01%)	wwPDB-VP
Wilson B-factor (Å <sup>2</sup> )	14.4	Xtrriage
Anisotropy	0.446	Xtrriage
Bulk solvent $k_{sol}$ (e/Å <sup>3</sup> ), $B_{sol}$ (Å <sup>2</sup> )	0.34 , 59.3	EDS
L-test for twinning <sup>2</sup>	$\langle  L  \rangle = 0.52$ , $\langle L^2 \rangle = 0.36$	Xtrriage
Estimated twinning fraction	0.009 for h,-k,-l	Xtrriage
$F_o, F_c$ correlation	0.97	EDS
Total number of atoms	9130	wwPDB-VP
Average B, all atoms (Å <sup>2</sup> )	20.0	wwPDB-VP

Xtrriage's analysis on translational NCS is as follows: *The largest off-origin peak in the Patterson function is 4.40% of the height of the origin peak. No significant pseudotranslation is detected.*

<sup>1</sup>Intensities estimated from amplitudes.

<sup>2</sup>Theoretical values of  $\langle |L| \rangle$ ,  $\langle L^2 \rangle$  for acentric reflections are 0.5, 0.333 respectively for untwinned datasets, and 0.375, 0.2 for perfectly twinned datasets.

## 5 Model quality [i](#)

### 5.1 Standard geometry [i](#)

Bond lengths and bond angles in the following residue types are not validated in this section: BEZ, 1TQ, TQQ

The Z score for a bond length (or angle) is the number of standard deviations the observed value is removed from the expected value. A bond length (or angle) with  $|Z| > 5$  is considered an outlier worth inspection. RMSZ is the root-mean-square of all Z scores of the bond lengths (or angles).

Mol	Chain	Bond lengths		Bond angles	
		RMSZ	# Z  >5	RMSZ	# Z  >5
1	D	0.64	0/862	0.80	0/1174
1	H	0.67	1/953 (0.1%)	0.75	1/1302 (0.1%)
2	A	0.66	0/2876	0.82	1/3898 (0.0%)
2	B	0.62	0/2876	0.77	0/3897
All	All	0.64	1/7567 (0.0%)	0.79	2/10271 (0.0%)

Chiral center outliers are detected by calculating the chiral volume of a chiral center and verifying if the center is modelled as a planar moiety or with the opposite hand. A planarity outlier is detected by checking planarity of atoms in a peptide group, atoms in a mainchain group or atoms of a sidechain that are expected to be planar.

Mol	Chain	#Chirality outliers	#Planarity outliers
2	A	0	1
2	B	0	1
All	All	0	2

All (1) bond length outliers are listed below:

Mol	Chain	Res	Type	Atoms	Z	Observed(Å)	Ideal(Å)
1	H	81	CYS	CB-SG	-7.35	1.69	1.82

All (2) bond angle outliers are listed below:

Mol	Chain	Res	Type	Atoms	Z	Observed(°)	Ideal(°)
1	H	147	ARG	NE-CZ-NH1	6.32	123.46	120.30
2	A	403	ASP	CB-CG-OD1	6.22	123.90	118.30

There are no chirality outliers.

All (2) planarity outliers are listed below:

Mol	Chain	Res	Type	Group
2	A	310	PRO	Peptide
2	B	310	PRO	Peptide

## 5.2 Too-close contacts [i](#)

In the following table, the Non-H and H(model) columns list the number of non-hydrogen atoms and hydrogen atoms in the chain respectively. The H(added) column lists the number of hydrogen atoms added and optimized by MolProbity. The Clashes column lists the number of clashes within the asymmetric unit, whereas Symm-Clashes lists symmetry-related clashes.

Mol	Chain	Non-H	H(model)	H(added)	Clashes	Symm-Clashes
1	D	869	0	755	9	0
1	H	952	0	825	18	0
2	A	2805	0	2747	28	0
2	B	2803	0	2735	25	0
3	D	8	0	5	0	0
3	H	8	0	5	0	0
4	A	701	0	0	5	0
4	B	625	0	0	6	0
4	D	180	0	0	3	0
4	H	179	0	0	8	0
All	All	9130	0	7072	73	0

The all-atom clashscore is defined as the number of clashes found per 1000 atoms (including hydrogen atoms). The all-atom clashscore for this structure is 5.

All (73) close contacts within the same asymmetric unit are listed below, sorted by their clash magnitude.

Atom-1	Atom-2	Interatomic distance (Å)	Clash overlap (Å)
1:H:173:THR:HA	4:H:2170:HOH:O	1.71	0.91
2:B:74:GLU:N	4:B:878:HOH:O	2.09	0.86
1:H:80:HIS:O	1:H:142[A]:THR:HG21	1.79	0.82
1:H:95[A]:THR:HG22	4:H:2065:HOH:O	1.82	0.79
2:B:104:ARG:HH11	2:B:106:HIS:HE1	1.31	0.78
2:A:104:ARG:HH11	2:A:106:HIS:HE1	1.30	0.77
4:D:2161:HOH:O	2:A:118[A]:MET:SD	2.44	0.75
4:H:2084:HOH:O	2:B:118[B]:MET:SD	2.45	0.74
1:D:105:SER:HA	1:D:164:ASN:HD21	1.54	0.73
1:H:105:SER:HA	1:H:164:ASN:HD21	1.59	0.68
1:H:95[A]:THR:HG23	4:H:2038:HOH:O	1.93	0.68
2:A:74:GLU:N	4:A:733:HOH:O	2.26	0.67

*Continued on next page...*



Continued from previous page...

Atom-1	Atom-2	Interatomic distance (Å)	Clash overlap (Å)
2:B:91:TYR:OH	2:B:428:HIS:HD2	1.76	0.67
2:A:91:TYR:OH	2:A:428:HIS:HD2	1.78	0.66
2:A:124:ASN:HD21	2:A:178:GLY:H	1.43	0.66
2:B:124:ASN:HD21	2:B:178:GLY:H	1.40	0.66
2:B:197:GLN:NE2	2:B:227:SER:H	1.95	0.64
2:A:197:GLN:NE2	2:A:227:SER:H	1.98	0.61
2:B:197:GLN:HE21	2:B:227:SER:H	1.49	0.60
1:H:109[A]:TQQ:HB2	1:H:160[A]:TRP:NE1	2.17	0.59
2:A:335:ARG:H	2:A:386:GLN:HE22	1.49	0.58
2:A:91:TYR:OH	2:A:428:HIS:CD2	2.57	0.57
1:H:80:HIS:O	1:H:142[A]:THR:CG2	2.51	0.57
2:B:106:HIS:HD2	2:B:418:ALA:O	1.88	0.56
2:A:335:ARG:H	2:A:386:GLN:NE2	2.03	0.55
2:B:285:LYS:NZ	4:B:832:HOH:O	2.39	0.54
2:B:398:ASN:HD22	2:B:417:GLY:H	1.55	0.54
1:D:167:SER:HB2	2:B:177:GLN:HE22	1.71	0.54
2:A:197:GLN:HE21	2:A:227:SER:H	1.54	0.54
2:A:133:GLY:O	2:A:428:HIS:HE1	1.92	0.53
2:A:106:HIS:HD2	2:A:418:ALA:O	1.92	0.53
2:A:263:ARG:HG3	4:A:1007:HOH:O	2.10	0.52
1:H:173:THR:CA	4:H:2170:HOH:O	2.43	0.52
2:B:321:LYS:HA	4:B:723:HOH:O	2.11	0.51
1:H:81:CYS:C	1:H:142[A]:THR:HG23	2.32	0.50
1:H:167:SER:HB2	2:A:177:GLN:HE22	1.76	0.50
1:D:117:HIS:HE1	4:D:2048:HOH:O	1.94	0.50
2:A:398:ASN:HD22	2:A:417:GLY:H	1.60	0.50
1:H:146:GLU:CD	2:A:354:LYS:HZ1	2.15	0.49
1:H:77:TYR:CE1	1:H:79:ARG:HG2	2.47	0.49
1:H:159:ASN:HD22	2:A:177:GLN:NE2	2.11	0.48
2:B:143:HIS:HD2	4:B:566:HOH:O	1.97	0.48
1:D:146:GLU:CD	2:B:354:LYS:HZ1	2.17	0.47
2:B:275:ILE:HA	2:B:290:SER:HA	1.96	0.47
1:H:109[A]:TQQ:HB2	1:H:160[A]:TRP:HE1	1.80	0.47
2:B:220:THR:HG22	4:B:803:HOH:O	2.14	0.47
2:B:335:ARG:H	2:B:386:GLN:NE2	2.13	0.47
2:A:275:ILE:HA	2:A:290:SER:HA	1.97	0.46
1:H:154:LEU:HD22	4:H:2125:HOH:O	2.15	0.46
2:B:398:ASN:ND2	2:B:417:GLY:H	2.13	0.46
2:A:128:GLN:HE22	2:A:186:ARG:C	2.19	0.45
2:B:128:GLN:HE22	2:B:186:ARG:C	2.20	0.45
1:D:155:HIS:HE1	4:B:442:HOH:O	2.00	0.45

Continued on next page...

Continued from previous page...

Atom-1	Atom-2	Interatomic distance (Å)	Clash overlap (Å)
2:B:335:ARG:H	2:B:386:GLN:HE22	1.65	0.44
2:A:231:GLN:NE2	2:A:234:ARG:HH11	2.15	0.43
1:D:159:ASN:HD22	2:B:177:GLN:NE2	2.16	0.43
4:H:2037:HOH:O	2:A:143:HIS:HE1	2.01	0.43
2:A:150:LYS:HE3	4:A:933:HOH:O	2.18	0.43
2:B:124:ASN:ND2	2:B:178:GLY:H	2.12	0.43
2:A:396:GLY:HA2	2:A:422:SER:O	2.18	0.42
2:A:398:ASN:HD22	2:A:416:GLU:HA	1.84	0.42
1:H:155:HIS:HE1	4:A:446:HOH:O	2.01	0.42
2:A:398:ASN:ND2	2:A:417:GLY:H	2.16	0.42
1:D:95:THR:HG22	4:D:2091:HOH:O	2.19	0.42
2:A:124:ASN:ND2	2:A:178:GLY:H	2.15	0.42
1:D:146:GLU:OE2	1:D:155:HIS:HD2	2.03	0.42
2:A:186:ARG:HH22	2:A:426:GLN:NE2	2.17	0.41
2:A:432:GLY:C	4:A:1048:HOH:O	2.59	0.41
2:B:343:PHE:HB3	2:B:357:ALA:HB2	2.02	0.41
1:D:109[A]:TQQ:HB2	1:D:160[A]:TRP:NE1	2.35	0.41
1:H:174:SER:N	4:H:2170:HOH:O	2.49	0.41
2:B:231:GLN:NE2	2:B:234:ARG:HH11	2.19	0.41
1:H:173:THR:HG21	2:B:76:LEU:HD13	2.03	0.41

There are no symmetry-related clashes.

## 5.3 Torsion angles [i](#)

### 5.3.1 Protein backbone [i](#)

In the following table, the Percentiles column shows the percent Ramachandran outliers of the chain as a percentile score with respect to all X-ray entries followed by that with respect to entries of similar resolution.

The Analysed column shows the number of residues for which the backbone conformation was analysed, and the total number of residues.

Mol	Chain	Analysed	Favoured	Allowed	Outliers	Percentiles	
1	D	108/136 (79%)	105 (97%)	3 (3%)	0	100	100
1	H	121/136 (89%)	118 (98%)	3 (2%)	0	100	100
2	A	359/361 (99%)	346 (96%)	12 (3%)	1 (0%)	41	18
2	B	359/361 (99%)	347 (97%)	10 (3%)	2 (1%)	25	7
All	All	947/994 (95%)	916 (97%)	28 (3%)	3 (0%)	41	18

All (3) Ramachandran outliers are listed below:

Mol	Chain	Res	Type
2	B	216	VAL
2	A	200	SER
2	B	200	SER

### 5.3.2 Protein sidechains [i](#)

In the following table, the Percentiles column shows the percent sidechain outliers of the chain as a percentile score with respect to all X-ray entries followed by that with respect to entries of similar resolution.

The Analysed column shows the number of residues for which the sidechain conformation was analysed, and the total number of residues.

Mol	Chain	Analysed	Rotameric	Outliers	Percentiles	
1	D	95/112 (85%)	95 (100%)	0	100	100
1	H	105/112 (94%)	105 (100%)	0	100	100
2	A	305/305 (100%)	302 (99%)	3 (1%)	76	52
2	B	305/305 (100%)	303 (99%)	2 (1%)	84	65
All	All	810/834 (97%)	805 (99%)	5 (1%)	88	69

All (5) residues with a non-rotameric sidechain are listed below:

Mol	Chain	Res	Type
2	A	104	ARG
2	A	406[A]	GLN
2	A	406[B]	GLN
2	B	104	ARG
2	B	388	ARG

Sometimes sidechains can be flipped to improve hydrogen bonding and reduce clashes. All (42) such sidechains are listed below:

Mol	Chain	Res	Type
1	D	117	HIS
1	D	139	GLN
1	D	143	GLN
1	D	155	HIS
1	D	164	ASN
1	H	139	GLN
1	H	143	GLN

*Continued on next page...*

*Continued from previous page...*

Mol	Chain	Res	Type
1	H	155	HIS
1	H	164	ASN
2	A	86	GLN
2	A	106	HIS
2	A	124	ASN
2	A	128	GLN
2	A	143	HIS
2	A	177	GLN
2	A	180	ASN
2	A	187	GLN
2	A	197	GLN
2	A	231	GLN
2	A	261	GLN
2	A	266	GLN
2	A	386	GLN
2	A	398	ASN
2	A	424	GLN
2	A	426	GLN
2	A	428	HIS
2	B	86	GLN
2	B	106	HIS
2	B	124	ASN
2	B	128	GLN
2	B	143	HIS
2	B	177	GLN
2	B	180	ASN
2	B	187	GLN
2	B	197	GLN
2	B	231	GLN
2	B	266	GLN
2	B	386	GLN
2	B	398	ASN
2	B	424	GLN
2	B	426	GLN
2	B	428	HIS

### 5.3.3 RNA

There are no RNA molecules in this entry.

## 5.4 Non-standard residues in protein, DNA, RNA chains [i](#)

4 non-standard protein/DNA/RNA residues are modelled in this entry.

In the following table, the Counts columns list the number of bonds (or angles) for which Mogul statistics could be retrieved, the number of bonds (or angles) that are observed in the model and the number of bonds (or angles) that are defined in the Chemical Component Dictionary. The Link column lists molecule types, if any, to which the group is linked. The Z score for a bond length (or angle) is the number of standard deviations the observed value is removed from the expected value. A bond length (or angle) with  $|Z| > 2$  is considered an outlier worth inspection. RMSZ is the root-mean-square of all Z scores of the bond lengths (or angles).

Mol	Type	Chain	Res	Link	Bond lengths			Bond angles		
					Counts	RMSZ	# Z  > 2	Counts	RMSZ	# Z  > 2
1	1TQ	H	109[B]	-	16,19,20	3.28	5 (31%)	13,26,28	2.46	4 (30%)
1	TQQ	D	109[A]	-	12,17,18	2.92	3 (25%)	11,24,26	2.23	3 (27%)
1	1TQ	D	109[B]	-	16,19,20	3.01	3 (18%)	13,26,28	2.27	5 (38%)
1	TQQ	H	109[A]	-	12,17,18	3.16	4 (33%)	11,24,26	2.76	5 (45%)

In the following table, the Chirals column lists the number of chiral outliers, the number of chiral centers analysed, the number of these observed in the model and the number defined in the Chemical Component Dictionary. Similar counts are reported in the Torsion and Rings columns. '-' means no outliers of that kind were identified.

Mol	Type	Chain	Res	Link	Chirals	Torsions	Rings
1	1TQ	H	109[B]	-	-	3/7/9/11	0/2/2/2
1	TQQ	D	109[A]	-	-	0/4/19/21	0/2/2/2
1	1TQ	D	109[B]	-	-	3/7/9/11	0/2/2/2
1	TQQ	H	109[A]	-	-	0/4/19/21	0/2/2/2

All (15) bond length outliers are listed below:

Mol	Chain	Res	Type	Atoms	Z	Observed(Å)	Ideal(Å)
1	H	109[B]	1TQ	CH3-N2	11.44	1.49	1.34
1	D	109[B]	1TQ	CH3-N2	10.74	1.48	1.34
1	H	109[A]	TQQ	CE2-CZ2	-8.21	1.39	1.50
1	D	109[A]	TQQ	CE2-CZ2	-7.37	1.40	1.50
1	D	109[A]	TQQ	CH2-CZ2	-4.60	1.36	1.49
1	D	109[A]	TQQ	CZ3-CE3	4.56	1.42	1.34
1	H	109[A]	TQQ	CH2-CZ2	-4.20	1.38	1.49
1	H	109[B]	1TQ	CH2-N2	3.93	1.47	1.41
1	H	109[A]	TQQ	CZ3-CE3	3.77	1.41	1.34
1	D	109[B]	1TQ	CH2-N2	3.58	1.46	1.41
1	H	109[A]	TQQ	CB-CG	-2.76	1.47	1.51

*Continued on next page...*

Continued from previous page...

Mol	Chain	Res	Type	Atoms	Z	Observed(Å)	Ideal(Å)
1	D	109[B]	1TQ	O2-CZ2	2.45	1.43	1.35
1	H	109[B]	1TQ	O2-CZ2	2.30	1.43	1.35
1	H	109[B]	1TQ	CE3-CZ3	2.27	1.41	1.36
1	H	109[B]	1TQ	CZ2-CE2	-2.14	1.39	1.42

All (17) bond angle outliers are listed below:

Mol	Chain	Res	Type	Atoms	Z	Observed(°)	Ideal(°)
1	H	109[A]	TQQ	CZ2-CE2-NE1	5.99	129.50	119.94
1	D	109[A]	TQQ	CZ2-CE2-NE1	5.85	129.28	119.94
1	H	109[A]	TQQ	O2-CZ2-CE2	-5.16	116.38	121.84
1	H	109[B]	1TQ	CH2-N2-CH3	-5.16	116.86	126.63
1	D	109[B]	1TQ	CH2-N2-CH3	-4.53	118.04	126.63
1	H	109[B]	1TQ	CG-CB-CA	4.10	120.86	114.53
1	D	109[B]	1TQ	O1-CH3-N2	-3.89	120.84	125.80
1	H	109[B]	1TQ	O1-CH3-N2	-3.77	120.99	125.80
1	D	109[B]	1TQ	CG-CB-CA	2.86	118.95	114.53
1	H	109[A]	TQQ	O2-CZ2-CH2	2.70	125.67	120.93
1	D	109[A]	TQQ	CD2-CE3-CZ3	-2.57	117.99	121.09
1	H	109[B]	1TQ	CZ3-CH2-CZ2	2.48	121.37	119.80
1	D	109[B]	1TQ	CZ3-CH2-CZ2	2.40	121.31	119.80
1	D	109[A]	TQQ	CB-CG-CD1	-2.12	125.34	127.97
1	H	109[A]	TQQ	CB-CG-CD1	-2.09	125.38	127.97
1	H	109[A]	TQQ	CD2-CE3-CZ3	-2.04	118.62	121.09
1	D	109[B]	1TQ	CZ3-CH2-N2	-2.01	119.57	122.59

There are no chirality outliers.

All (6) torsion outliers are listed below:

Mol	Chain	Res	Type	Atoms
1	D	109[B]	1TQ	CZ2-CH2-N2-CH3
1	D	109[B]	1TQ	O1-CH3-N2-CH2
1	H	109[B]	1TQ	CZ2-CH2-N2-CH3
1	H	109[B]	1TQ	O1-CH3-N2-CH2
1	D	109[B]	1TQ	CZ3-CH2-N2-CH3
1	H	109[B]	1TQ	CZ3-CH2-N2-CH3

There are no ring outliers.

2 monomers are involved in 3 short contacts:

Mol	Chain	Res	Type	Clashes	Symm-Clashes
1	D	109[A]	TQQ	1	0
1	H	109[A]	TQQ	2	0

## 5.5 Carbohydrates [i](#)

There are no monosaccharides in this entry.

## 5.6 Ligand geometry [i](#)

2 ligands are modelled in this entry.

In the following table, the Counts columns list the number of bonds (or angles) for which Mogul statistics could be retrieved, the number of bonds (or angles) that are observed in the model and the number of bonds (or angles) that are defined in the Chemical Component Dictionary. The Link column lists molecule types, if any, to which the group is linked. The Z score for a bond length (or angle) is the number of standard deviations the observed value is removed from the expected value. A bond length (or angle) with  $|Z| > 2$  is considered an outlier worth inspection. RMSZ is the root-mean-square of all Z scores of the bond lengths (or angles).

Mol	Type	Chain	Res	Link	Bond lengths			Bond angles		
					Counts	RMSZ	$\# Z  > 2$	Counts	RMSZ	$\# Z  > 2$
3	BEZ	D	2002	-	8,8,9	0.93	0	9,9,11	0.60	0
3	BEZ	H	2001	-	8,8,9	1.26	1 (12%)	9,9,11	0.57	0

In the following table, the Chirals column lists the number of chiral outliers, the number of chiral centers analysed, the number of these observed in the model and the number defined in the Chemical Component Dictionary. Similar counts are reported in the Torsion and Rings columns. '-' means no outliers of that kind were identified.

Mol	Type	Chain	Res	Link	Chirals	Torsions	Rings
3	BEZ	D	2002	-	-	0/2/2/4	0/1/1/1
3	BEZ	H	2001	-	-	0/2/2/4	0/1/1/1

All (1) bond length outliers are listed below:

Mol	Chain	Res	Type	Atoms	Z	Observed(Å)	Ideal(Å)
3	H	2001	BEZ	C6-C1	2.14	1.43	1.39

There are no bond angle outliers.

There are no chirality outliers.

There are no torsion outliers.

There are no ring outliers.

No monomer is involved in short contacts.

## 5.7 Other polymers

There are no such residues in this entry.

## 5.8 Polymer linkage issues

There are no chain breaks in this entry.



## 6 Fit of model and data [i](#)

### 6.1 Protein, DNA and RNA chains [i](#)

In the following table, the column labelled ‘#RSRZ> 2’ contains the number (and percentage) of RSRZ outliers, followed by percent RSRZ outliers for the chain as percentile scores relative to all X-ray entries and entries of similar resolution. The OWAB column contains the minimum, median, 95<sup>th</sup> percentile and maximum values of the occupancy-weighted average B-factor per residue. The column labelled ‘Q< 0.9’ lists the number of (and percentage) of residues with an average occupancy less than 0.9.

Mol	Chain	Analysed	<RSRZ>	#RSRZ>2	OWAB(Å <sup>2</sup> )	Q<0.9
1	D	109/136 (80%)	-0.08	0 <span style="border: 1px solid blue; padding: 2px;">100</span> <span style="border: 1px solid blue; padding: 2px;">100</span>	11, 16, 26, 36	0
1	H	119/136 (87%)	0.27	12 (10%) <span style="border: 1px solid red; padding: 2px;">7</span> <span style="border: 1px solid red; padding: 2px;">8</span>	11, 16, 38, 51	0
2	A	359/361 (99%)	-0.26	2 (0%) <span style="border: 1px solid blue; padding: 2px;">89</span> <span style="border: 1px solid blue; padding: 2px;">91</span>	9, 13, 25, 35	0
2	B	360/361 (99%)	0.02	2 (0%) <span style="border: 1px solid blue; padding: 2px;">89</span> <span style="border: 1px solid blue; padding: 2px;">91</span>	10, 18, 31, 50	0
All	All	947/994 (95%)	-0.07	16 (1%) <span style="border: 1px solid blue; padding: 2px;">70</span> <span style="border: 1px solid blue; padding: 2px;">70</span>	9, 15, 30, 51	0

All (16) RSRZ outliers are listed below:

Mol	Chain	Res	Type	RSRZ
1	H	66	LEU	5.7
2	B	303	ASP	4.7
1	H	68	ASN	4.4
1	H	63	ASN	3.6
1	H	70	ASP	3.6
1	H	67	ALA	3.4
1	H	62	LEU	3.4
2	A	431	GLY	3.2
1	H	65	ASP	2.8
1	H	117	HIS	2.8
2	B	433[A]	THR	2.6
1	H	180	ALA	2.6
2	A	432	GLY	2.4
1	H	116	PRO	2.0
1	H	61	SER	2.0
1	H	64	PRO	2.0

### 6.2 Non-standard residues in protein, DNA, RNA chains [i](#)

In the following table, the Atoms column lists the number of modelled atoms in the group and the number defined in the chemical component dictionary. The B-factors column lists the minimum,

median, 95<sup>th</sup> percentile and maximum values of B factors of atoms in the group. The column labelled 'Q< 0.9' lists the number of atoms with occupancy less than 0.9.

Mol	Type	Chain	Res	Atoms	RSCC	RSR	B-factors(Å <sup>2</sup> )	Q<0.9
1	TQQ	D	109[A]	16/17	0.93	0.09	13,15,22,23	16
1	1TQ	D	109[B]	18/19	0.94	0.10	10,15,19,20	18
1	TQQ	H	109[A]	16/17	0.95	0.08	8,13,18,18	16
1	1TQ	H	109[B]	18/19	0.96	0.08	9,12,18,23	18

### 6.3 Carbohydrates [i](#)

There are no monosaccharides in this entry.

### 6.4 Ligands [i](#)

In the following table, the Atoms column lists the number of modelled atoms in the group and the number defined in the chemical component dictionary. The B-factors column lists the minimum, median, 95<sup>th</sup> percentile and maximum values of B factors of atoms in the group. The column labelled 'Q< 0.9' lists the number of atoms with occupancy less than 0.9.

Mol	Type	Chain	Res	Atoms	RSCC	RSR	B-factors(Å <sup>2</sup> )	Q<0.9
3	BEZ	H	2001	8/9	0.89	0.11	15,18,20,20	0
3	BEZ	D	2002	8/9	0.92	0.09	16,18,21,23	0

### 6.5 Other polymers [i](#)

There are no such residues in this entry.