



Full wwPDB X-ray Structure Validation Report ⓘ

Apr 19, 2022 – 04:05 pm BST

PDB ID : 7OKT
Title : X-ray structure of soluble EPCR in C2221 space group
Authors : Erausquin, E.; Dichiara, M.G.; Lopez-Sagaseta, J.
Deposited on : 2021-05-18
Resolution : 1.95 Å(reported)

This is a Full wwPDB X-ray Structure Validation Report for a publicly released PDB entry.

We welcome your comments at validation@mail.wwpdb.org

A user guide is available at

<https://www.wwpdb.org/validation/2017/XrayValidationReportHelp>

with specific help available everywhere you see the ⓘ symbol.

The following versions of software and data (see [references ⓘ](#)) were used in the production of this report:

MolProbity : 4.02b-467
Mogul : 1.8.4, CSD as541be (2020)
Xtriage (Phenix) : 1.13
EDS : 2.27
buster-report : 1.1.7 (2018)
Percentile statistics : 20191225.v01 (using entries in the PDB archive December 25th 2019)
Refmac : 5.8.0267
CCP4 : 7.1.010 (Gargrove)
Ideal geometry (proteins) : Engh & Huber (2001)
Ideal geometry (DNA, RNA) : Parkinson et al. (1996)
Validation Pipeline (wwPDB-VP) : 2.27

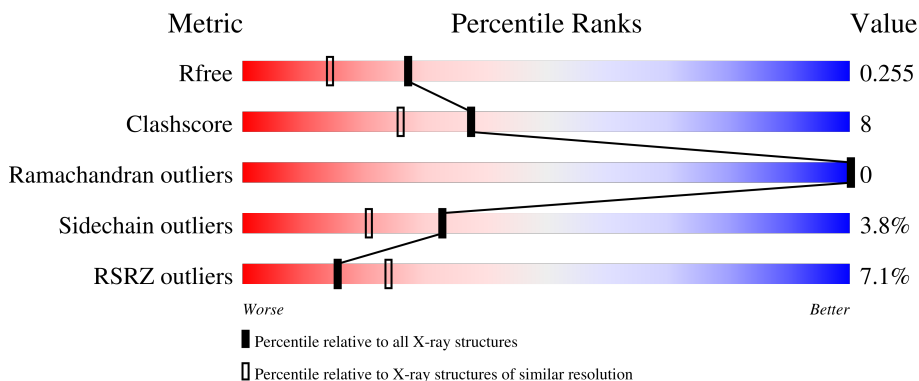
1 Overall quality at a glance i

The following experimental techniques were used to determine the structure:

X-RAY DIFFRACTION

The reported resolution of this entry is 1.95 Å.

Percentile scores (ranging between 0-100) for global validation metrics of the entry are shown in the following graphic. The table shows the number of entries on which the scores are based.



Metric	Whole archive (#Entries)	Similar resolution (#Entries, resolution range(Å))
R_{free}	130704	2580 (1.96-1.96)
Clashscore	141614	2705 (1.96-1.96)
Ramachandran outliers	138981	2678 (1.96-1.96)
Sidechain outliers	138945	2678 (1.96-1.96)
RSRZ outliers	127900	2539 (1.96-1.96)

The table below summarises the geometric issues observed across the polymeric chains and their fit to the electron density. The red, orange, yellow and green segments of the lower bar indicate the fraction of residues that contain outliers for ≥ 3 , 2, 1 and 0 types of geometric quality criteria respectively. A grey segment represents the fraction of residues that are not modelled. The numeric value for each fraction is indicated below the corresponding segment, with a dot representing fractions $\leq 5\%$. The upper red bar (where present) indicates the fraction of residues that have poor fit to the electron density. The numeric value is given above the bar.

Mol	Chain	Length	Quality of chain
1	A	195	<div style="display: flex; align-items: center;"> <div style="width: 6%; height: 10px; background-color: red; margin-right: 5px;"></div> <div style="width: 73%; height: 10px; background-color: green; margin-right: 5px;"></div> <div style="width: 11%; height: 10px; background-color: yellow; margin-right: 5px;"></div> <div style="width: 15%; height: 10px; background-color: grey;"></div> </div> <p style="margin-left: 20px;">6% 73% 11% 15%</p>
1	B	195	<div style="display: flex; align-items: center;"> <div style="width: 6%; height: 10px; background-color: red; margin-right: 5px;"></div> <div style="width: 68%; height: 10px; background-color: green; margin-right: 5px;"></div> <div style="width: 14%; height: 10px; background-color: yellow; margin-right: 5px;"></div> <div style="width: 18%; height: 10px; background-color: grey;"></div> </div> <p style="margin-left: 20px;">6% 68% 14% 18%</p>
2	C	2	<div style="width: 100%; height: 10px; background-color: yellow;"></div> <p style="text-align: center;">100%</p>

2 Entry composition [i](#)

There are 6 unique types of molecules in this entry. The entry contains 2872 atoms, of which 0 are hydrogens and 0 are deuteriums.

In the tables below, the ZeroOcc column contains the number of atoms modelled with zero occupancy, the AltConf column contains the number of residues with at least one atom in alternate conformation and the Trace column contains the number of residues modelled with at most 2 atoms.

- Molecule 1 is a protein called Endothelial protein C receptor.

Mol	Chain	Residues	Atoms					ZeroOcc	AltConf	Trace
			Total	C	N	O	S			
1	A	165	1279	827	222	226	4	1	0	0
1	B	159	1201	776	205	216	4	1	0	0

There are 4 discrepancies between the modelled and reference sequences:

Chain	Residue	Modelled	Actual	Comment	Reference
A	-1	GLY	-	expression tag	UNP Q9UNN8
A	0	PRO	-	expression tag	UNP Q9UNN8
B	-1	GLY	-	expression tag	UNP Q9UNN8
B	0	PRO	-	expression tag	UNP Q9UNN8

- Molecule 2 is an oligosaccharide called alpha-L-fucopyranose-(1-6)-2-acetamido-2-deoxy-beta-D-glucopyranose.



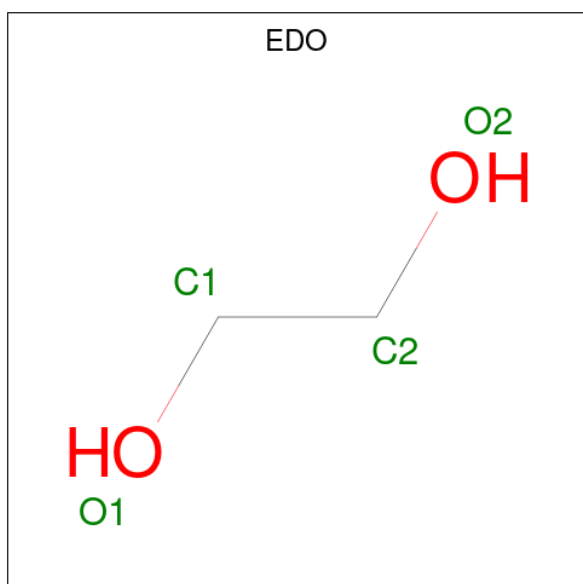
Mol	Chain	Residues	Atoms				ZeroOcc	AltConf	Trace
			Total	C	N	O			
2	C	2	24	14	1	9	0	0	0

- Molecule 3 is 2-acetamido-2-deoxy-beta-D-glucopyranose (three-letter code: NAG) (formula: C₈H₁₅NO₆).



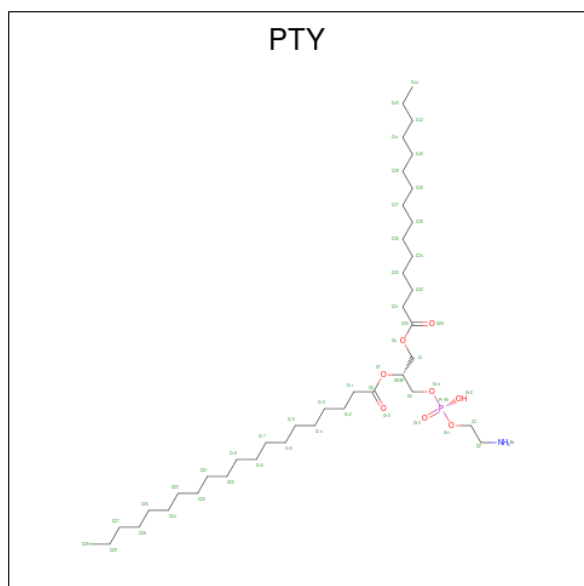
Mol	Chain	Residues	Atoms				ZeroOcc	AltConf
			Total	C	N	O		
3	A	1	14	8	1	5	0	0
3	A	1	14	8	1	5	0	0
3	A	1	11	6	1	4	0	0
3	B	1	14	8	1	5	0	0
3	B	1	14	8	1	5	0	0

- Molecule 4 is 1,2-ETHANEDIOL (three-letter code: EDO) (formula: $C_2H_6O_2$).



Mol	Chain	Residues	Atoms			ZeroOcc	AltConf
4	A	1	Total	C	O	0	0
			4	2	2		

- Molecule 5 is PHOSPHATIDYLETHANOLAMINE (three-letter code: PTY) (formula: $C_{40}H_{80}NO_8P$) (labeled as "Ligand of Interest" by depositor).



Mol	Chain	Residues	Atoms				ZeroOcc	AltConf
5	A	1	Total	C	O	P	0	0
			41	32	8	1		
5	B	1	Total	C	O	P	0	0
			47	38	8	1		

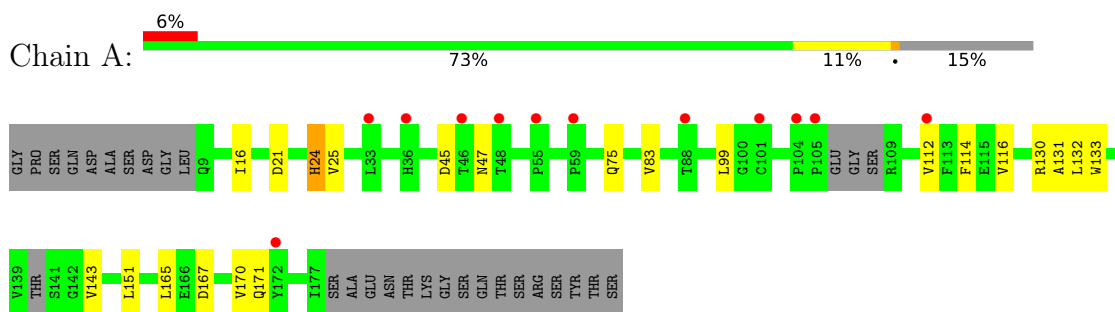
- Molecule 6 is water.

Mol	Chain	Residues	Atoms		ZeroOcc	AltConf
6	A	106	Total	O	0	0
			106	106		
6	B	103	Total	O	0	0
			103	103		

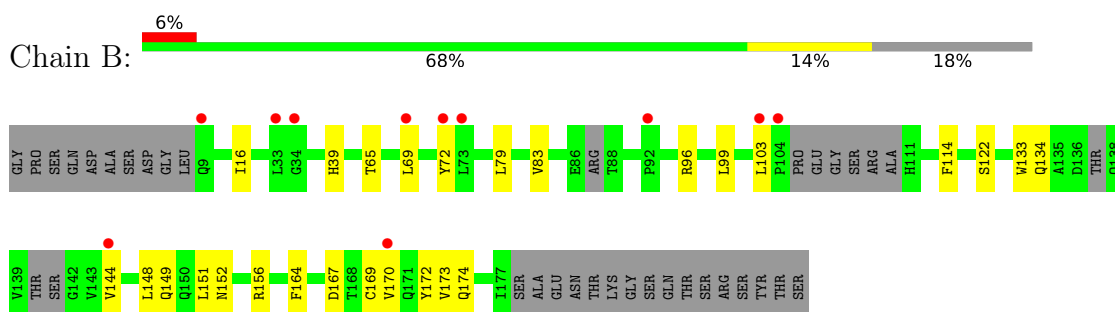
3 Residue-property plots [i](#)

These plots are drawn for all protein, RNA, DNA and oligosaccharide chains in the entry. The first graphic for a chain summarises the proportions of the various outlier classes displayed in the second graphic. The second graphic shows the sequence view annotated by issues in geometry and electron density. Residues are color-coded according to the number of geometric quality criteria for which they contain at least one outlier: green = 0, yellow = 1, orange = 2 and red = 3 or more. A red dot above a residue indicates a poor fit to the electron density ($RSRZ > 2$). Stretches of 2 or more consecutive residues without any outlier are shown as a green connector. Residues present in the sample, but not in the model, are shown in grey.

- Molecule 1: Endothelial protein C receptor



- Molecule 1: Endothelial protein C receptor



- Molecule 2: alpha-L-fucopyranose-(1-6)-2-acetamido-2-deoxy-beta-D-glucopyranose



4 Data and refinement statistics

Property	Value	Source
Space group	C 2 2 21	Depositor
Cell constants a, b, c, α , β , γ	75.30Å 91.60Å 123.36Å 90.00° 90.00° 90.00°	Depositor
Resolution (Å)	45.80 – 1.95 45.80 – 1.95	Depositor EDS
% Data completeness (in resolution range)	99.9 (45.80-1.95) 100.0 (45.80-1.95)	Depositor EDS
R_{merge}	0.06	Depositor
R_{sym}	(Not available)	Depositor
$\langle I/\sigma(I) \rangle$ ¹	1.41 (at 1.95Å)	Xtriage
Refinement program	PHENIX 1.20.1_4487	Depositor
R, R_{free}	0.221 , 0.257 0.219 , 0.255	Depositor DCC
R_{free} test set	1533 reflections (4.88%)	wwPDB-VP
Wilson B-factor (Å ²)	44.6	Xtriage
Anisotropy	0.514	Xtriage
Bulk solvent k_{sol} (e/Å ³), B_{sol} (Å ²)	(Not available) , (Not available)	EDS
L-test for twinning ²	$\langle L \rangle = 0.47$, $\langle L^2 \rangle = 0.30$	Xtriage
Estimated twinning fraction	No twinning to report.	Xtriage
F_o, F_c correlation	0.96	EDS
Total number of atoms	2872	wwPDB-VP
Average B, all atoms (Å ²)	63.0	wwPDB-VP

Xtriage's analysis on translational NCS is as follows: *The largest off-origin peak in the Patterson function is 6.89% of the height of the origin peak. No significant pseudotranslation is detected.*

¹Intensities estimated from amplitudes.

²Theoretical values of $\langle |L| \rangle$, $\langle L^2 \rangle$ for acentric reflections are 0.5, 0.333 respectively for untwinned datasets, and 0.375, 0.2 for perfectly twinned datasets.

5 Model quality [i](#)

5.1 Standard geometry [i](#)

Bond lengths and bond angles in the following residue types are not validated in this section: NAG, EDO, PTY, FUC

The Z score for a bond length (or angle) is the number of standard deviations the observed value is removed from the expected value. A bond length (or angle) with $|Z| > 5$ is considered an outlier worth inspection. RMSZ is the root-mean-square of all Z scores of the bond lengths (or angles).

Mol	Chain	Bond lengths		Bond angles	
		RMSZ	# Z >5	RMSZ	# Z >5
1	A	0.64	0/1315	0.73	0/1796
1	B	0.69	0/1232	0.74	0/1683
All	All	0.67	0/2547	0.73	0/3479

There are no bond length outliers.

There are no bond angle outliers.

There are no chirality outliers.

There are no planarity outliers.

5.2 Too-close contacts [i](#)

In the following table, the Non-H and H(model) columns list the number of non-hydrogen atoms and hydrogen atoms in the chain respectively. The H(added) column lists the number of hydrogen atoms added and optimized by MolProbity. The Clashes column lists the number of clashes within the asymmetric unit, whereas Symm-Clashes lists symmetry-related clashes.

Mol	Chain	Non-H	H(model)	H(added)	Clashes	Symm-Clashes
1	A	1279	0	1156	17	0
1	B	1201	0	1060	22	0
2	C	24	0	22	0	0
3	A	39	0	35	1	0
3	B	28	0	26	0	0
4	A	4	0	6	1	0
5	A	41	0	58	2	0
5	B	47	0	73	8	0
6	A	106	0	0	3	0
6	B	103	0	0	6	0
All	All	2872	0	2436	39	0

The all-atom clashscore is defined as the number of clashes found per 1000 atoms (including hydrogen atoms). The all-atom clashscore for this structure is 8.

All (39) close contacts within the same asymmetric unit are listed below, sorted by their clash magnitude.

Atom-1	Atom-2	Interatomic distance (Å)	Clash overlap (Å)
1:A:75:GLN:HG3	1:B:156:ARG:NH2	2.09	0.67
1:B:144:VAL:HG12	6:B:332:HOH:O	1.97	0.64
1:A:75:GLN:HG3	1:B:156:ARG:HH22	1.64	0.62
1:A:143:VAL:HG22	6:A:302:HOH:O	2.02	0.58
1:A:75:GLN:HG2	6:B:362:HOH:O	2.04	0.57
1:B:144:VAL:HA	6:B:377:HOH:O	2.03	0.57
1:B:72:TYR:CG	5:B:203:PTY:H131	2.39	0.57
1:A:170:VAL:HA	6:A:380:HOH:O	2.05	0.56
1:A:167:ASP:O	1:A:171:GLN:HG3	2.07	0.53
1:A:47:ASN:HB3	4:A:203:EDO:H12	1.91	0.53
1:B:103:LEU:HD13	1:B:173:VAL:HG21	1.91	0.52
1:A:131:ALA:O	1:A:132:LEU:HD22	2.11	0.51
1:A:112:VAL:HB	1:A:165:LEU:HB3	1.92	0.50
1:B:103:LEU:HD11	1:B:170:VAL:HG13	1.93	0.49
5:B:203:PTY:HC11	6:B:372:HOH:O	2.13	0.49
1:A:25:VAL:CG1	1:A:45:ASP:HB3	2.43	0.48
1:B:164:PHE:CZ	5:B:203:PTY:H121	2.48	0.48
1:B:103:LEU:HD21	1:B:174:GLN:HG3	1.95	0.47
1:B:96:ARG:NH1	6:B:316:HOH:O	2.46	0.47
1:B:69:LEU:HD23	5:B:203:PTY:H132	1.97	0.46
1:B:16:ILE:HD12	1:B:96:ARG:HB2	1.96	0.46
1:B:39:HIS:HE1	6:B:304:HOH:O	1.98	0.46
1:A:25:VAL:HG12	1:A:45:ASP:HB3	1.96	0.46
1:A:83:VAL:HG23	6:A:338:HOH:O	2.15	0.45
1:B:72:TYR:CD2	5:B:203:PTY:H131	2.52	0.45
1:B:148:LEU:O	1:B:152:ASN:ND2	2.45	0.44
1:B:172:TYR:CD2	5:B:203:PTY:H271	2.53	0.43
1:A:21:ASP:CG	1:A:24:HIS:HD1	2.19	0.43
1:B:79:LEU:O	1:B:83:VAL:HG23	2.19	0.43
1:B:144:VAL:O	1:B:144:VAL:HG13	2.18	0.43
5:A:205:PTY:H162	5:A:205:PTY:H202	2.01	0.42
1:A:116:VAL:HG11	5:A:205:PTY:H392	2.02	0.42
1:A:130:ARG:O	1:A:132:LEU:HD23	2.20	0.41
1:B:65:THR:O	1:B:69:LEU:HG	2.21	0.41
1:B:169:CYS:HA	5:B:203:PTY:H293	2.01	0.41
1:A:133:TRP:CD1	1:A:151:LEU:HB3	2.55	0.40
1:B:133:TRP:CD1	1:B:151:LEU:HB3	2.56	0.40

Continued on next page...

Continued from previous page...

Atom-1	Atom-2	Interatomic distance (Å)	Clash overlap (Å)
1:A:16:ILE:HD11	3:A:201:NAG:H62	2.03	0.40
1:B:72:TYR:HB2	5:B:203:PTY:H112	2.03	0.40

There are no symmetry-related clashes.

5.3 Torsion angles [i](#)

5.3.1 Protein backbone [i](#)

In the following table, the Percentiles column shows the percent Ramachandran outliers of the chain as a percentile score with respect to all X-ray entries followed by that with respect to entries of similar resolution.

The Analysed column shows the number of residues for which the backbone conformation was analysed, and the total number of residues.

Mol	Chain	Analysed	Favoured	Allowed	Outliers	Percentiles	
1	A	159/195 (82%)	154 (97%)	5 (3%)	0	100	100
1	B	149/195 (76%)	143 (96%)	6 (4%)	0	100	100
All	All	308/390 (79%)	297 (96%)	11 (4%)	0	100	100

There are no Ramachandran outliers to report.

5.3.2 Protein sidechains [i](#)

In the following table, the Percentiles column shows the percent sidechain outliers of the chain as a percentile score with respect to all X-ray entries followed by that with respect to entries of similar resolution.

The Analysed column shows the number of residues for which the sidechain conformation was analysed, and the total number of residues.

Mol	Chain	Analysed	Rotameric	Outliers	Percentiles	
1	A	124/172 (72%)	121 (98%)	3 (2%)	49	40
1	B	114/172 (66%)	108 (95%)	6 (5%)	22	10
All	All	238/344 (69%)	229 (96%)	9 (4%)	33	21

All (9) residues with a non-rotameric sidechain are listed below:

Mol	Chain	Res	Type
1	A	24	HIS
1	A	99	LEU
1	A	114	PHE
1	B	99	LEU
1	B	114	PHE
1	B	122	SER
1	B	134	GLN
1	B	149	GLN
1	B	167	ASP

Sometimes sidechains can be flipped to improve hydrogen bonding and reduce clashes. All (1) such sidechains are listed below:

Mol	Chain	Res	Type
1	B	149	GLN

5.3.3 RNA [i](#)

There are no RNA molecules in this entry.

5.4 Non-standard residues in protein, DNA, RNA chains [i](#)

There are no non-standard protein/DNA/RNA residues in this entry.

5.5 Carbohydrates [i](#)

2 monosaccharides are modelled in this entry.

In the following table, the Counts columns list the number of bonds (or angles) for which Mogul statistics could be retrieved, the number of bonds (or angles) that are observed in the model and the number of bonds (or angles) that are defined in the Chemical Component Dictionary. The Link column lists molecule types, if any, to which the group is linked. The Z score for a bond length (or angle) is the number of standard deviations the observed value is removed from the expected value. A bond length (or angle) with $|Z| > 2$ is considered an outlier worth inspection. RMSZ is the root-mean-square of all Z scores of the bond lengths (or angles).

Mol	Type	Chain	Res	Link	Bond lengths			Bond angles		
					Counts	RMSZ	$\# Z > 2$	Counts	RMSZ	$\# Z > 2$
2	NAG	C	1	2,1	14,14,15	1.21	2 (14%)	17,19,21	0.67	0
2	FUC	C	2	2	10,10,11	1.73	4 (40%)	14,14,16	1.11	1 (7%)

In the following table, the Chirals column lists the number of chiral outliers, the number of chiral

centers analysed, the number of these observed in the model and the number defined in the Chemical Component Dictionary. Similar counts are reported in the Torsion and Rings columns. '-' means no outliers of that kind were identified.

Mol	Type	Chain	Res	Link	Chirals	Torsions	Rings
2	NAG	C	1	2,1	-	0/6/23/26	0/1/1/1
2	FUC	C	2	2	-	-	0/1/1/1

All (6) bond length outliers are listed below:

Mol	Chain	Res	Type	Atoms	Z	Observed(Å)	Ideal(Å)
2	C	1	NAG	O5-C1	-3.17	1.38	1.43
2	C	1	NAG	C1-C2	2.98	1.56	1.52
2	C	2	FUC	O2-C2	-2.86	1.37	1.43
2	C	2	FUC	C6-C5	2.34	1.57	1.51
2	C	2	FUC	C4-C5	-2.32	1.47	1.52
2	C	2	FUC	C4-C3	2.28	1.58	1.52

All (1) bond angle outliers are listed below:

Mol	Chain	Res	Type	Atoms	Z	Observed(°)	Ideal(°)
2	C	2	FUC	C1-O5-C5	2.04	117.39	112.78

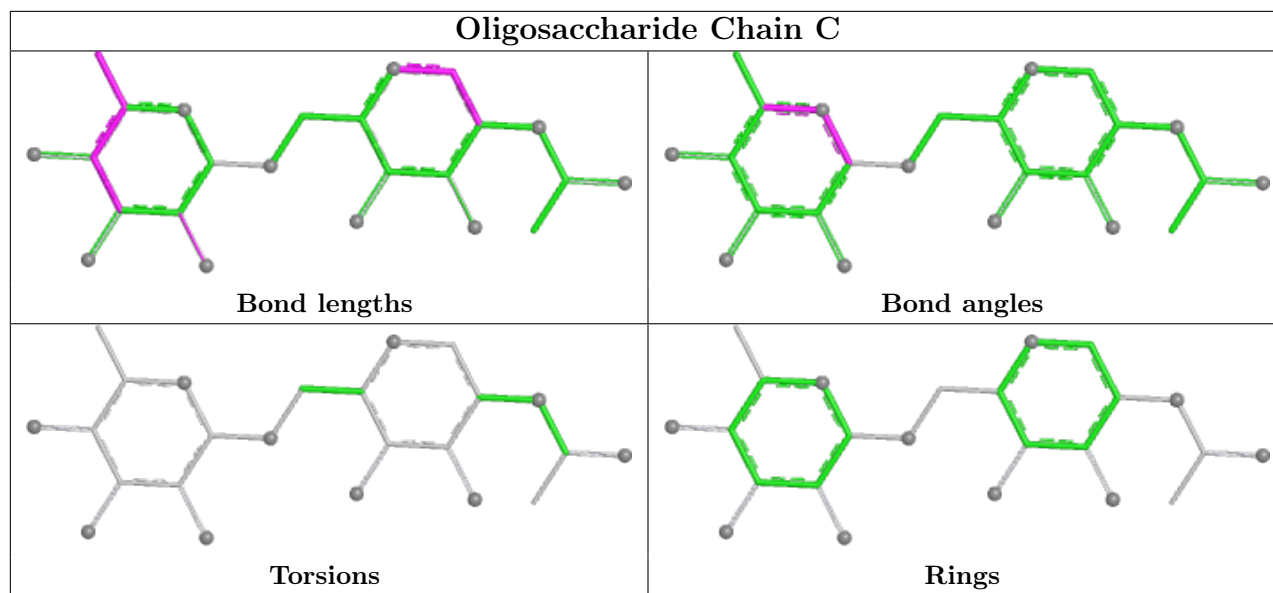
There are no chirality outliers.

There are no torsion outliers.

There are no ring outliers.

No monomer is involved in short contacts.

The following is a two-dimensional graphical depiction of Mogul quality analysis of bond lengths, bond angles, torsion angles, and ring geometry for oligosaccharide.



5.6 Ligand geometry [i](#)

8 ligands are modelled in this entry.

In the following table, the Counts columns list the number of bonds (or angles) for which Mogul statistics could be retrieved, the number of bonds (or angles) that are observed in the model and the number of bonds (or angles) that are defined in the Chemical Component Dictionary. The Link column lists molecule types, if any, to which the group is linked. The Z score for a bond length (or angle) is the number of standard deviations the observed value is removed from the expected value. A bond length (or angle) with $|Z| > 2$ is considered an outlier worth inspection. RMSZ is the root-mean-square of all Z scores of the bond lengths (or angles).

Mol	Type	Chain	Res	Link	Bond lengths			Bond angles		
					Counts	RMSZ	# Z > 2	Counts	RMSZ	# Z > 2
4	EDO	A	203	-	3,3,3	0.61	0	2,2,2	0.59	0
3	NAG	A	204	1	11,11,15	0.94	1 (9%)	12,15,21	0.97	0
5	PTY	A	205	-	40,40,49	0.43	0	44,45,54	0.64	1 (2%)
5	PTY	B	203	-	46,46,49	0.45	0	50,51,54	0.76	2 (4%)
3	NAG	A	202	1	14,14,15	0.43	0	17,19,21	0.77	1 (5%)
3	NAG	B	202	1	14,14,15	0.66	0	17,19,21	0.54	0
3	NAG	B	201	1	14,14,15	0.71	0	17,19,21	0.64	0
3	NAG	A	201	1	14,14,15	0.79	1 (7%)	17,19,21	0.58	0

In the following table, the Chirals column lists the number of chiral outliers, the number of chiral centers analysed, the number of these observed in the model and the number defined in the Chemical Component Dictionary. Similar counts are reported in the Torsion and Rings columns. '-' means no outliers of that kind were identified.

Mol	Type	Chain	Res	Link	Chirals	Torsions	Rings
4	EDO	A	203	-	-	0/1/1/1	-
3	NAG	A	204	1	-	2/2/19/26	0/1/1/1
5	PTY	A	205	-	-	10/42/42/53	-
5	PTY	B	203	-	-	7/48/48/53	-
3	NAG	A	202	1	-	2/6/23/26	0/1/1/1
3	NAG	B	202	1	-	2/6/23/26	0/1/1/1
3	NAG	B	201	1	-	2/6/23/26	0/1/1/1
3	NAG	A	201	1	-	0/6/23/26	0/1/1/1

All (2) bond length outliers are listed below:

Mol	Chain	Res	Type	Atoms	Z	Observed(Å)	Ideal(Å)
3	A	204	NAG	C1-C2	3.00	1.56	1.52
3	A	201	NAG	C1-C2	2.70	1.56	1.52

All (4) bond angle outliers are listed below:

Mol	Chain	Res	Type	Atoms	Z	Observed(°)	Ideal(°)
5	B	203	PTY	O7-C8-C11	-2.93	105.19	111.50
3	A	202	NAG	C1-O5-C5	2.51	115.59	112.19
5	B	203	PTY	O12-P1-O13	2.50	120.48	110.68
5	A	205	PTY	O12-P1-O13	2.42	120.16	110.68

There are no chirality outliers.

All (25) torsion outliers are listed below:

Mol	Chain	Res	Type	Atoms
3	A	204	NAG	O5-C5-C6-O6
3	B	201	NAG	O5-C5-C6-O6
3	A	204	NAG	C4-C5-C6-O6
3	A	202	NAG	C4-C5-C6-O6
3	B	202	NAG	O5-C5-C6-O6
5	B	203	PTY	C30-C31-C32-C33
3	B	202	NAG	C4-C5-C6-O6
3	B	201	NAG	C4-C5-C6-O6
5	A	205	PTY	C37-C38-C39-C40
5	B	203	PTY	C21-C22-C23-C24
5	A	205	PTY	C35-C36-C37-C38
5	A	205	PTY	C11-C12-C13-C14
5	B	203	PTY	C35-C36-C37-C38
3	A	202	NAG	O5-C5-C6-O6

Continued on next page...

Continued from previous page...

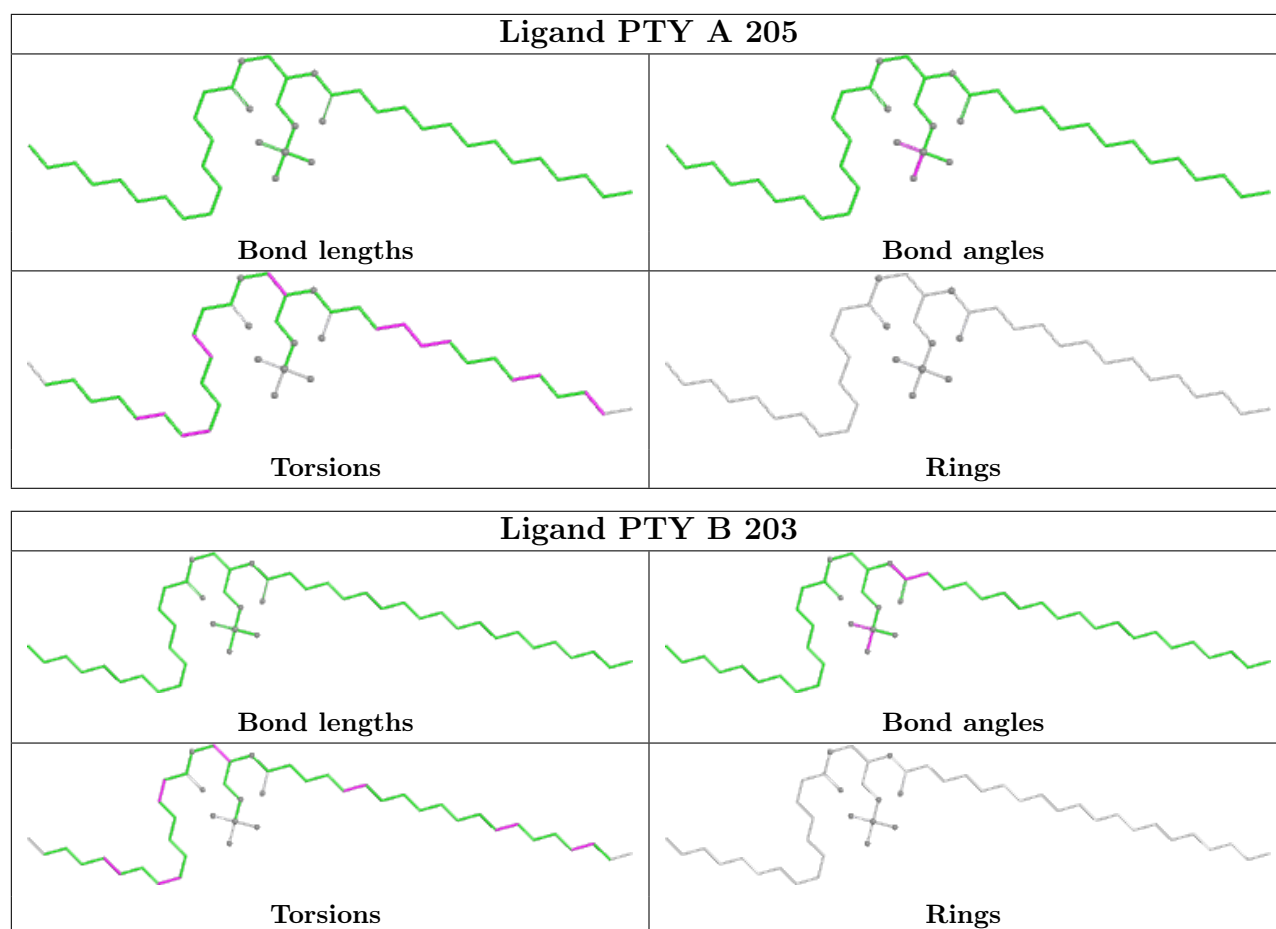
Mol	Chain	Res	Type	Atoms
5	A	205	PTY	C13-C14-C15-C16
5	B	203	PTY	C13-C14-C15-C16
5	A	205	PTY	C31-C32-C33-C34
5	A	205	PTY	O4-C1-C6-O7
5	A	205	PTY	C12-C13-C14-C15
5	B	203	PTY	C38-C39-C40-C41
5	A	205	PTY	C20-C21-C22-C23
5	A	205	PTY	C17-C18-C19-C20
5	B	203	PTY	O4-C1-C6-O7
5	A	205	PTY	O4-C1-C6-C5
5	B	203	PTY	C25-C26-C27-C28

There are no ring outliers.

4 monomers are involved in 12 short contacts:

Mol	Chain	Res	Type	Clashes	Symm-Clashes
4	A	203	EDO	1	0
5	A	205	PTY	2	0
5	B	203	PTY	8	0
3	A	201	NAG	1	0

The following is a two-dimensional graphical depiction of Mogul quality analysis of bond lengths, bond angles, torsion angles, and ring geometry for all instances of the Ligand of Interest. In addition, ligands with molecular weight > 250 and outliers as shown on the validation Tables will also be included. For torsion angles, if less than 5% of the Mogul distribution of torsion angles is within 10 degrees of the torsion angle in question, then that torsion angle is considered an outlier. Any bond that is central to one or more torsion angles identified as an outlier by Mogul will be highlighted in the graph. For rings, the root-mean-square deviation (RMSD) between the ring in question and similar rings identified by Mogul is calculated over all ring torsion angles. If the average RMSD is greater than 60 degrees and the minimal RMSD between the ring in question and any Mogul-identified rings is also greater than 60 degrees, then that ring is considered an outlier. The outliers are highlighted in purple. The color gray indicates Mogul did not find sufficient equivalents in the CSD to analyse the geometry.



5.7 Other polymers [i](#)

There are no such residues in this entry.

5.8 Polymer linkage issues [i](#)

There are no chain breaks in this entry.

6 Fit of model and data

6.1 Protein, DNA and RNA chains

In the following table, the column labelled ‘#RSRZ > 2’ contains the number (and percentage) of RSRZ outliers, followed by percent RSRZ outliers for the chain as percentile scores relative to all X-ray entries and entries of similar resolution. The OWAB column contains the minimum, median, 95th percentile and maximum values of the occupancy-weighted average B-factor per residue. The column labelled ‘Q < 0.9’ lists the number of (and percentage) of residues with an average occupancy less than 0.9.

Mol	Chain	Analysed	<RSRZ>	#RSRZ>2	OWAB(Å ²)	Q<0.9
1	A	165/195 (84%)	0.59	12 (7%) 15 23	39, 63, 85, 104	1 (0%)
1	B	159/195 (81%)	0.59	11 (6%) 16 25	39, 61, 84, 103	1 (0%)
All	All	324/390 (83%)	0.59	23 (7%) 16 24	39, 62, 85, 104	2 (0%)

All (23) RSRZ outliers are listed below:

Mol	Chain	Res	Type	RSRZ
1	B	34	GLY	4.4
1	A	104	PRO	4.4
1	A	55	PRO	4.0
1	B	103	LEU	3.8
1	A	59	PRO	3.3
1	A	36	HIS	3.3
1	B	33	LEU	3.2
1	B	92	PRO	3.1
1	B	73	LEU	2.9
1	B	9	GLN	2.9
1	B	104	PRO	2.9
1	A	88	THR	2.7
1	A	33	LEU	2.6
1	A	46	THR	2.6
1	B	144	VAL	2.4
1	B	69	LEU	2.4
1	B	170	VAL	2.3
1	A	105	PRO	2.3
1	A	48	THR	2.3
1	A	172	TYR	2.2
1	B	72	TYR	2.2
1	A	101	CYS	2.1
1	A	112	VAL	2.0

6.2 Non-standard residues in protein, DNA, RNA chains [i](#)

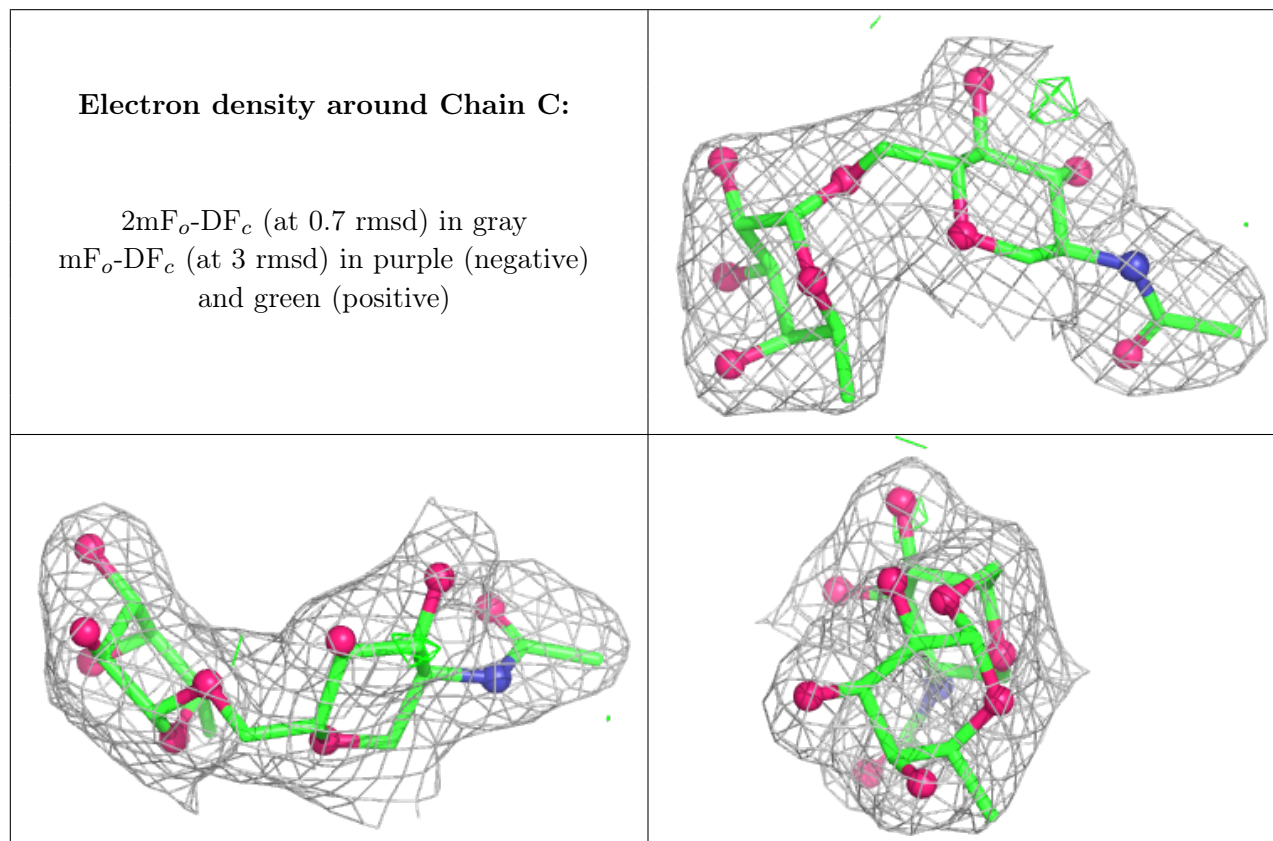
There are no non-standard protein/DNA/RNA residues in this entry.

6.3 Carbohydrates [i](#)

In the following table, the Atoms column lists the number of modelled atoms in the group and the number defined in the chemical component dictionary. The B-factors column lists the minimum, median, 95th percentile and maximum values of B factors of atoms in the group. The column labelled 'Q< 0.9' lists the number of atoms with occupancy less than 0.9.

Mol	Type	Chain	Res	Atoms	RSCC	RSR	B-factors(Å ²)	Q<0.9
2	NAG	C	1	14/15	0.95	0.17	46,49,53,54	0
2	FUC	C	2	10/11	0.96	0.08	57,62,64,66	0

The following is a graphical depiction of the model fit to experimental electron density for oligosaccharide. Each fit is shown from different orientation to approximate a three-dimensional view.



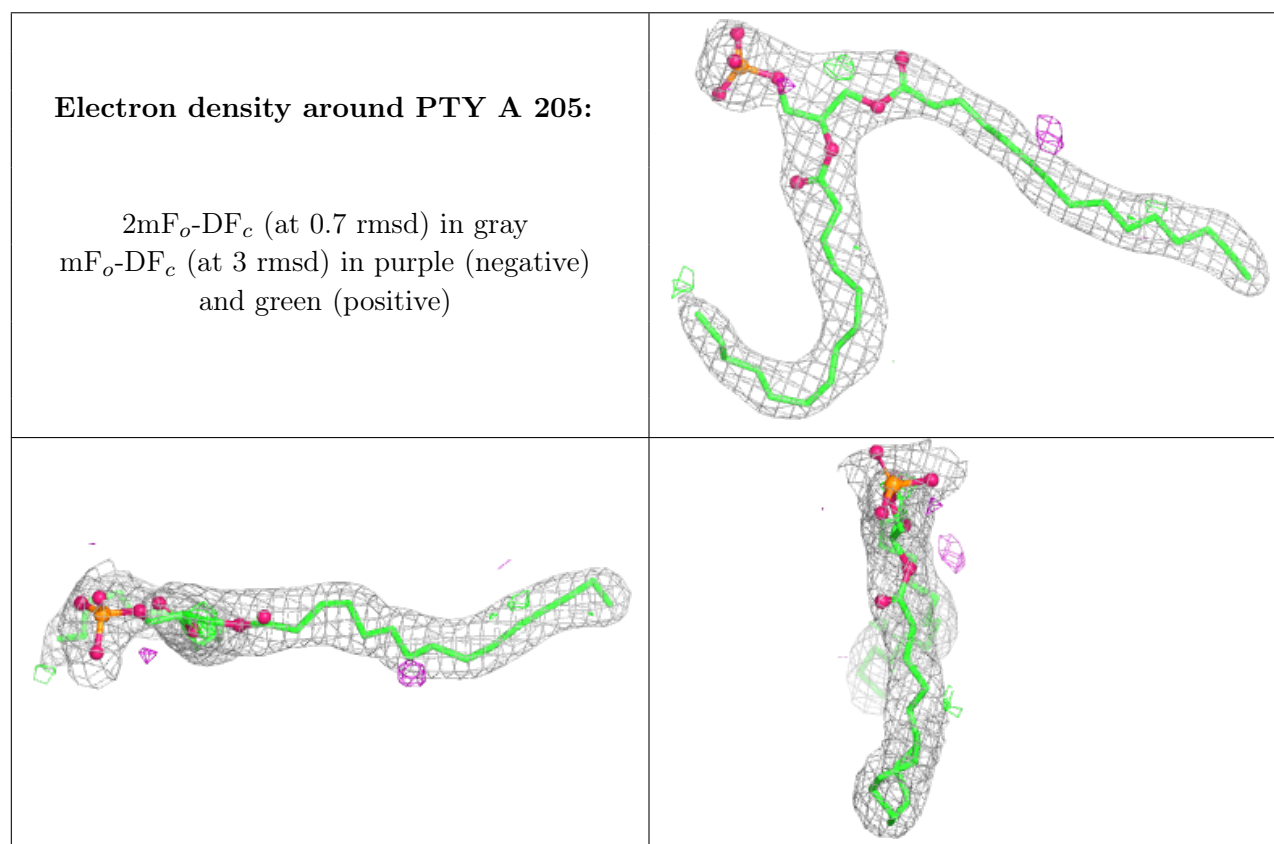
6.4 Ligands [i](#)

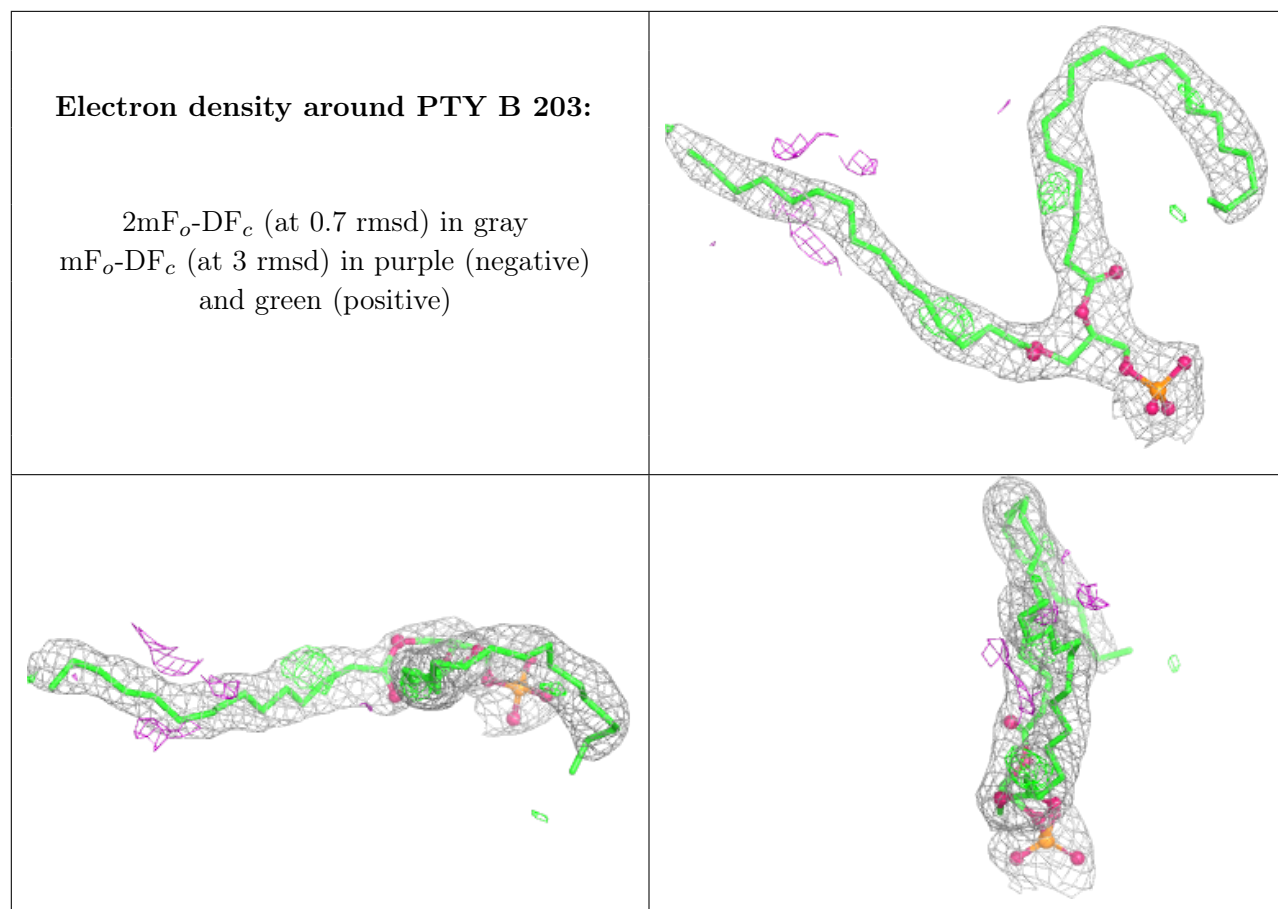
In the following table, the Atoms column lists the number of modelled atoms in the group and the number defined in the chemical component dictionary. The B-factors column lists the minimum,

median, 95th percentile and maximum values of B factors of atoms in the group. The column labelled 'Q< 0.9' lists the number of atoms with occupancy less than 0.9.

Mol	Type	Chain	Res	Atoms	RSCC	RSR	B-factors(Å ²)	Q<0.9
3	NAG	A	204	11/15	0.81	0.23	49,65,70,71	0
3	NAG	B	202	14/15	0.81	0.20	74,92,103,106	0
4	EDO	A	203	4/4	0.83	0.43	57,57,61,61	0
5	PTY	A	205	41/50	0.85	0.18	44,61,121,146	0
5	PTY	B	203	47/50	0.86	0.22	49,62,81,104	0
3	NAG	A	201	14/15	0.89	0.18	61,75,101,105	0
3	NAG	A	202	14/15	0.91	0.15	77,84,91,109	0
3	NAG	B	201	14/15	0.94	0.14	65,82,96,103	0

The following is a graphical depiction of the model fit to experimental electron density of all instances of the Ligand of Interest. In addition, ligands with molecular weight > 250 and outliers as shown on the geometry validation Tables will also be included. Each fit is shown from different orientation to approximate a three-dimensional view.





6.5 Other polymers [i](#)

There are no such residues in this entry.