



Full wwPDB X-ray Structure Validation Report ⓘ

May 15, 2020 – 09:54 pm BST

PDB ID : 5OLO
Title : Structure of the A2A-StaR2-bRIL562-Tozadenant complex at 3.1Å obtained from in meso soaking experiments.
Authors : Rucktooa, P.; Cheng, R.K.Y.; Segala, E.; Geng, T.; Errey, J.C.; Brown, G.A.; Cooke, R.; Marshall, F.H.; Dore, A.S.
Deposited on : 2017-07-28
Resolution : 3.10 Å(reported)

This is a Full wwPDB X-ray Structure Validation Report for a publicly released PDB entry.

We welcome your comments at validation@mail.wwpdb.org

A user guide is available at

<https://www.wwpdb.org/validation/2017/XrayValidationReportHelp>

with specific help available everywhere you see the ⓘ symbol.

The following versions of software and data (see [references ⓘ](#)) were used in the production of this report:

MolProbity : 4.02b-467
Mogul : 1.8.5 (274361), CSD as541be (2020)
Xtriage (Phenix) : 1.13
EDS : 2.11
buster-report : 1.1.7 (2018)
Percentile statistics : 20191225.v01 (using entries in the PDB archive December 25th 2019)
Refmac : 5.8.0158
CCP4 : 7.0.044 (Gargrove)
Ideal geometry (proteins) : Engh & Huber (2001)
Ideal geometry (DNA, RNA) : Parkinson et al. (1996)
Validation Pipeline (wwPDB-VP) : 2.11

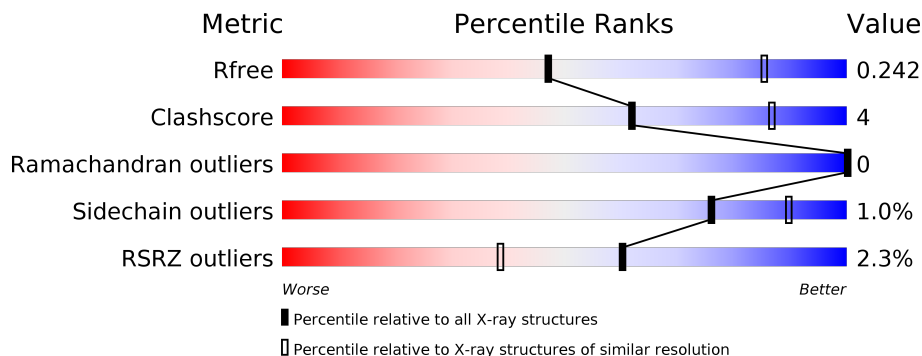
1 Overall quality at a glance

The following experimental techniques were used to determine the structure:

X-RAY DIFFRACTION

The reported resolution of this entry is 3.10 Å.

Percentile scores (ranging between 0-100) for global validation metrics of the entry are shown in the following graphic. The table shows the number of entries on which the scores are based.



Metric	Whole archive (#Entries)	Similar resolution (#Entries, resolution range(Å))
R_{free}	130704	1094 (3.10-3.10)
Clashscore	141614	1184 (3.10-3.10)
Ramachandran outliers	138981	1141 (3.10-3.10)
Sidechain outliers	138945	1141 (3.10-3.10)
RSRZ outliers	127900	1067 (3.10-3.10)

The table below summarises the geometric issues observed across the polymeric chains and their fit to the electron density. The red, orange, yellow and green segments on the lower bar indicate the fraction of residues that contain outliers for ≥ 3 , 2, 1 and 0 types of geometric quality criteria respectively. A grey segment represents the fraction of residues that are not modelled. The numeric value for each fraction is indicated below the corresponding segment, with a dot representing fractions $\leq 5\%$. The upper red bar (where present) indicates the fraction of residues that have poor fit to the electron density. The numeric value is given above the bar.

Mol	Chain	Length	Quality of chain
1	A	434	

The following table lists non-polymeric compounds, carbohydrate monomers and non-standard residues in protein, DNA, RNA chains that are outliers for geometric or electron-density-fit criteria:

Mol	Type	Chain	Res	Chirality	Geometry	Clashes	Electron density
4	OLA	A	1211	-	-	-	X
5	OLC	A	1218	-	-	-	X

2 Entry composition [i](#)

There are 7 unique types of molecules in this entry. The entry contains 3408 atoms, of which 0 are hydrogens and 0 are deuteriums.

In the tables below, the ZeroOcc column contains the number of atoms modelled with zero occupancy, the AltConf column contains the number of residues with at least one atom in alternate conformation and the Trace column contains the number of residues modelled with at most 2 atoms.

- Molecule 1 is a protein called Adenosine receptor A2a,Soluble cytochrome b562,Adenosine receptor A2a.

Mol	Chain	Residues	Atoms					ZeroOcc	AltConf	Trace
			Total	C	N	O	S			
1	A	385	2983	1942	502	517	22	0	3	0

There are 34 discrepancies between the modelled and reference sequences:

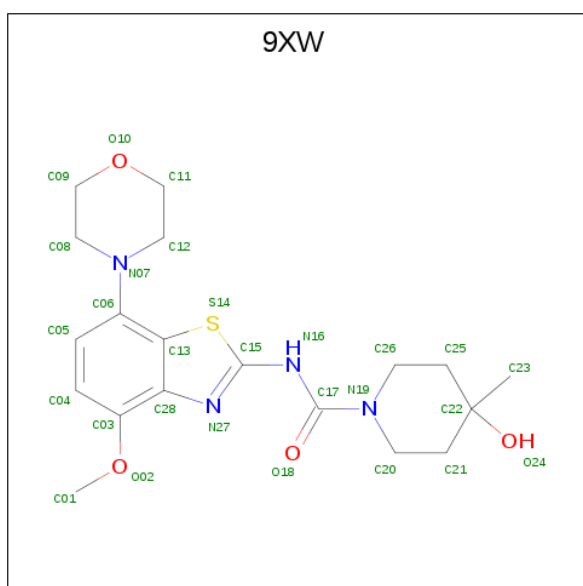
Chain	Residue	Modelled	Actual	Comment	Reference
A	-9	ALA	-	expression tag	UNP P29274
A	-8	ASP	-	expression tag	UNP P29274
A	-7	TYR	-	expression tag	UNP P29274
A	-6	LYS	-	expression tag	UNP P29274
A	-5	ASP	-	expression tag	UNP P29274
A	-4	ASP	-	expression tag	UNP P29274
A	-3	ASP	-	expression tag	UNP P29274
A	-2	ASP	-	expression tag	UNP P29274
A	-1	GLY	-	expression tag	UNP P29274
A	0	ALA	-	expression tag	UNP P29274
A	1	PRO	-	expression tag	UNP P29274
A	54	LEU	ALA	engineered mutation	UNP P29274
A	88	ALA	THR	engineered mutation	UNP P29274
A	107	ALA	ARG	engineered mutation	UNP P29274
A	122	ALA	LYS	engineered mutation	UNP P29274
A	154	ALA	ASN	engineered mutation	UNP P29274
A	202	ALA	LEU	engineered mutation	UNP P29274
A	1007	TRP	MET	engineered mutation	UNP P0ABE7
A	1102	ILE	HIS	engineered mutation	UNP P0ABE7
A	1106	LEU	GLY	linker	UNP P29274
A	235	ALA	LEU	engineered mutation	UNP P29274
A	239	ALA	VAL	engineered mutation	UNP P29274
A	277	ALA	SER	engineered mutation	UNP P29274
A	318	ALA	GLY	engineered mutation	UNP P29274
A	319	HIS	-	expression tag	UNP P29274
A	320	HIS	-	expression tag	UNP P29274

Continued on next page...

Continued from previous page...

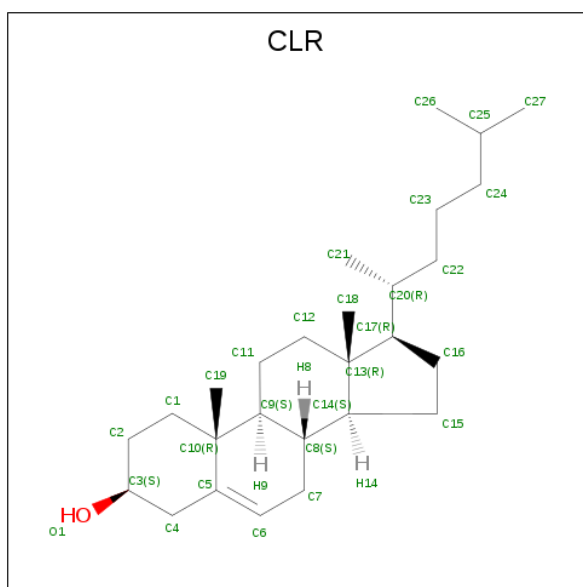
Chain	Residue	Modelled	Actual	Comment	Reference
A	321	HIS	-	expression tag	UNP P29274
A	322	HIS	-	expression tag	UNP P29274
A	323	HIS	-	expression tag	UNP P29274
A	324	HIS	-	expression tag	UNP P29274
A	325	HIS	-	expression tag	UNP P29274
A	326	HIS	-	expression tag	UNP P29274
A	327	HIS	-	expression tag	UNP P29274
A	328	HIS	-	expression tag	UNP P29274

- Molecule 2 is {N}-(4-methoxy-7-morpholin-4-yl)-1,3-benzothiazol-2-yl)-4-methyl-4-oxidanyl-piperidine-1-carboxamide (three-letter code: 9XW) (formula: C₁₉H₂₆N₄O₄S).



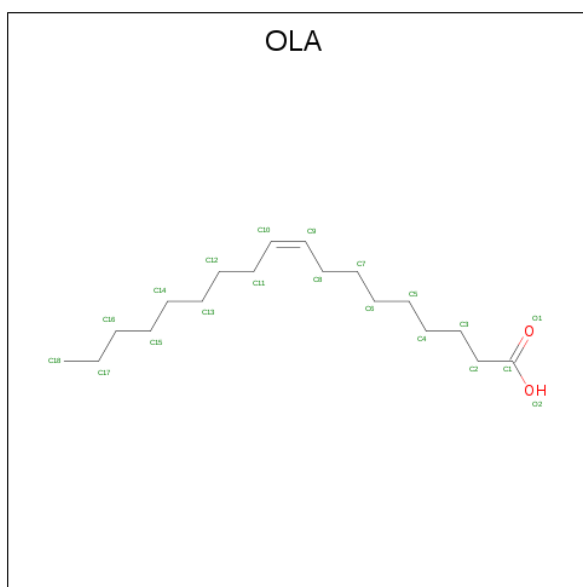
Mol	Chain	Residues	Atoms					ZeroOcc	AltConf
			Total	C	N	O	S		
2	A	1	28	19	4	4	1	0	0

- Molecule 3 is CHOLESTEROL (three-letter code: CLR) (formula: C₂₇H₄₆O).



Mol	Chain	Residues	Atoms			ZeroOcc	AltConf
3	A	1	Total	C	O	0	0
			28	27	1		
3	A	1	Total	C	O	0	0
			28	27	1		
3	A	1	Total	C	O	0	0
			28	27	1		

- Molecule 4 is OLEIC ACID (three-letter code: OLA) (formula: $C_{18}H_{34}O_2$).



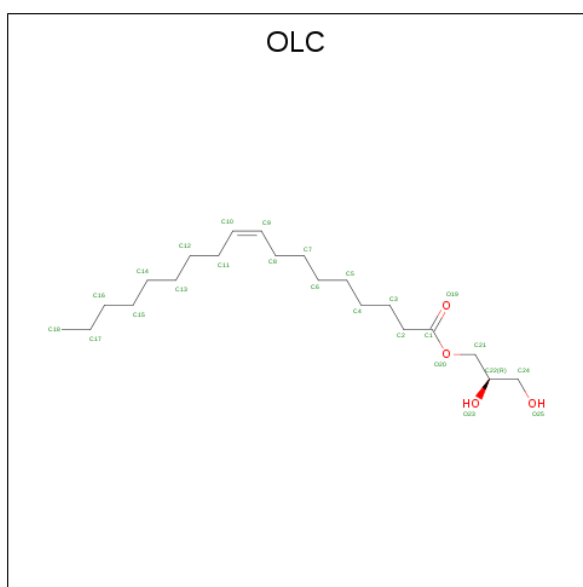
Mol	Chain	Residues	Atoms			ZeroOcc	AltConf
4	A	1	Total	C	O	0	0
			20	18	2		

Continued on next page...

Continued from previous page...

Mol	Chain	Residues	Atoms			ZeroOcc	AltConf
4	A	1	Total	C	O	0	0
			19	17	2		
4	A	1	Total	C	O	0	0
			9	7	2		
4	A	1	Total	C	O	0	0
			9	7	2		
4	A	1	Total	C	O	0	0
			18	16	2		
4	A	1	Total	C	O	0	0
			20	18	2		
4	A	1	Total	C	O	0	0
			15	13	2		
4	A	1	Total	C	O	0	0
			14	12	2		
4	A	1	Total	C	O	0	0
			11	9	2		
4	A	1	Total	C	O	0	0
			9	7	2		

- Molecule 5 is (2R)-2,3-dihydroxypropyl (9Z)-octadec-9-enoate (three-letter code: OLC) (formula: C₂₁H₄₀O₄).



Mol	Chain	Residues	Atoms			ZeroOcc	AltConf
5	A	1	Total	C	O	0	0
			17	13	4		
5	A	1	Total	C	O	0	0
			16	12	4		

Continued on next page...

Continued from previous page...

Mol	Chain	Residues	Atoms			ZeroOcc	AltConf
5	A	1	Total	C	O	0	0
			18	14	4		
5	A	1	Total	C	O	0	0
			17	13	4		
5	A	1	Total	C	O	0	0
			25	21	4		
5	A	1	Total	C	O	0	0
			25	21	4		
5	A	1	Total	C	O	0	0
			24	20	4		
5	A	1	Total	C	O	0	0
			22	18	4		

- Molecule 6 is SODIUM ION (three-letter code: NA) (formula: Na).

Mol	Chain	Residues	Atoms		ZeroOcc	AltConf
6	A	1	Total	Na	0	0
			1	1		

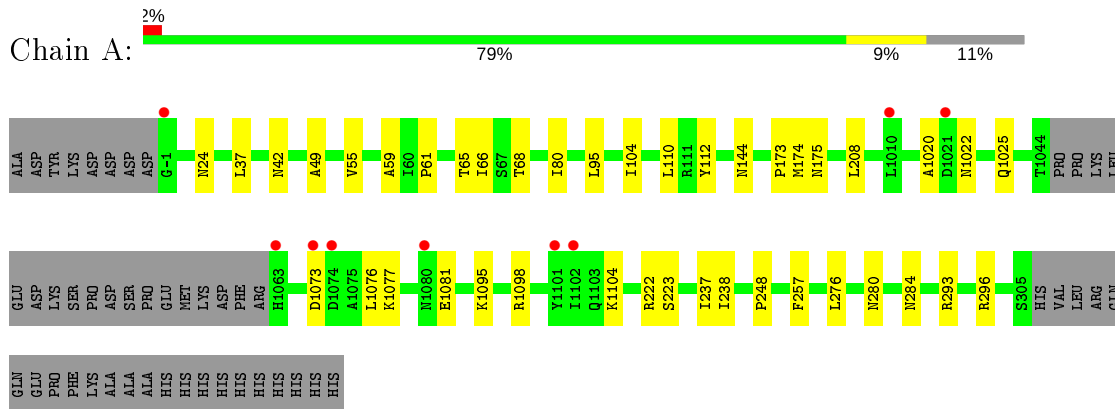
- Molecule 7 is water.

Mol	Chain	Residues	Atoms		ZeroOcc	AltConf
7	A	4	Total	O	0	0
			4	4		

3 Residue-property plots [i](#)

These plots are drawn for all protein, RNA and DNA chains in the entry. The first graphic for a chain summarises the proportions of the various outlier classes displayed in the second graphic. The second graphic shows the sequence view annotated by issues in geometry and electron density. Residues are color-coded according to the number of geometric quality criteria for which they contain at least one outlier: green = 0, yellow = 1, orange = 2 and red = 3 or more. A red dot above a residue indicates a poor fit to the electron density ($RSRZ > 2$). Stretches of 2 or more consecutive residues without any outlier are shown as a green connector. Residues present in the sample, but not in the model, are shown in grey.

- Molecule 1: Adenosine receptor A2a,Soluble cytochrome b562,Adenosine receptor A2a



4 Data and refinement statistics

Property	Value	Source
Space group	C 2 2 21	Depositor
Cell constants a, b, c, α , β , γ	39.38Å 181.01Å 141.77Å 90.00° 90.00° 90.00°	Depositor
Resolution (Å)	38.48 – 3.10 38.48 – 3.10	Depositor EDS
% Data completeness (in resolution range)	99.9 (38.48-3.10) 99.9 (38.48-3.10)	Depositor EDS
R_{merge}	0.17	Depositor
R_{sym}	(Not available)	Depositor
$\langle I/\sigma(I) \rangle$ ¹	1.60 (at 3.12Å)	Xtrriage
Refinement program	PHENIX (1.12RC2_2821)	Depositor
R, R_{free}	0.199 , 0.245 0.201 , 0.242	Depositor DCC
R_{free} test set	960 reflections (9.95%)	wwPDB-VP
Wilson B-factor (Å ²)	82.0	Xtrriage
Anisotropy	0.194	Xtrriage
Bulk solvent k_{sol} (e/Å ³), B_{sol} (Å ²)	0.30 , 77.2	EDS
L-test for twinning ²	$\langle L \rangle = 0.49$, $\langle L^2 \rangle = 0.32$	Xtrriage
Estimated twinning fraction	No twinning to report.	Xtrriage
F_o, F_c correlation	0.94	EDS
Total number of atoms	3408	wwPDB-VP
Average B, all atoms (Å ²)	81.0	wwPDB-VP

Xtrriage's analysis on translational NCS is as follows: *The largest off-origin peak in the Patterson function is 6.80% of the height of the origin peak. No significant pseudotranslation is detected.*

¹ Intensities estimated from amplitudes.

² Theoretical values of $\langle |L| \rangle$, $\langle L^2 \rangle$ for acentric reflections are 0.5, 0.333 respectively for untwinned datasets, and 0.375, 0.2 for perfectly twinned datasets.

5 Model quality [i](#)

5.1 Standard geometry [i](#)

Bond lengths and bond angles in the following residue types are not validated in this section: OLA, OLC, 9XW, CLR, NA

The Z score for a bond length (or angle) is the number of standard deviations the observed value is removed from the expected value. A bond length (or angle) with $|Z| > 5$ is considered an outlier worth inspection. RMSZ is the root-mean-square of all Z scores of the bond lengths (or angles).

Mol	Chain	Bond lengths		Bond angles	
		RMSZ	# Z >5	RMSZ	# Z >5
1	A	0.25	0/3049	0.39	0/4151

There are no bond length outliers.

There are no bond angle outliers.

There are no chirality outliers.

There are no planarity outliers.

5.2 Too-close contacts [i](#)

In the following table, the Non-H and H(model) columns list the number of non-hydrogen atoms and hydrogen atoms in the chain respectively. The H(added) column lists the number of hydrogen atoms added and optimized by MolProbity. The Clashes column lists the number of clashes within the asymmetric unit, whereas Symm-Clashes lists symmetry related clashes.

Mol	Chain	Non-H	H(model)	H(added)	Clashes	Symm-Clashes
1	A	2983	0	3052	22	0
2	A	28	0	0	0	0
3	A	84	0	138	1	0
4	A	144	0	202	5	0
5	A	164	0	234	9	0
6	A	1	0	0	0	0
7	A	4	0	0	0	0
All	All	3408	0	3626	31	0

The all-atom clashscore is defined as the number of clashes found per 1000 atoms (including hydrogen atoms). The all-atom clashscore for this structure is 4.

All (31) close contacts within the same asymmetric unit are listed below, sorted by their clash magnitude.

Atom-1	Atom-2	Interatomic distance (Å)	Clash overlap (Å)
5:A:1215:OLC:H22	5:A:1219:OLC:H22	1.77	0.65
1:A:95:LEU:HD21	1:A:238:ILE:HG22	1.87	0.57
1:A:1022:ASN:HB3	1:A:1025:GLN:HB2	1.87	0.57
1:A:65:THR:HG23	4:A:1205:OLA:H41	1.86	0.56
1:A:144:ASN:HA	1:A:173:PRO:HD3	1.87	0.55
1:A:1073:ASP:HA	1:A:1076:LEU:HB2	1.91	0.52
1:A:1020:ALA:HB1	1:A:1025:GLN:HB3	1.92	0.52
5:A:1219:OLC:H15A	5:A:1221:OLC:H9	1.92	0.51
4:A:1205:OLA:H51	5:A:1217:OLC:H5	1.94	0.50
1:A:104:ILE:HG22	1:A:112:TYR:HD1	1.79	0.48
4:A:1205:OLA:H172	5:A:1220:OLC:H16	1.95	0.48
1:A:208:LEU:HD11	1:A:222:ARG:HG3	1.95	0.48
1:A:66:ILE:HD11	1:A:80:ILE:HG22	1.95	0.47
4:A:1210:OLA:H21	4:A:1212:OLA:H22	1.95	0.47
1:A:55:VAL:HA	1:A:59:ALA:HB3	1.97	0.47
1:A:1095:LYS:HG3	1:A:1098:ARG:HH21	1.81	0.46
3:A:1204:CLR:H211	3:A:1204:CLR:H232	1.78	0.46
1:A:37:LEU:O	1:A:42:ASN:ND2	2.48	0.46
1:A:24:ASN:HB3	1:A:49:ALA:HB1	1.98	0.44
1:A:1077:LYS:NZ	1:A:1081:GLU:OE2	2.51	0.44
1:A:237:ILE:HD13	4:A:1211:OLA:H32	2.00	0.44
1:A:1104:LYS:HA	1:A:1104:LYS:HD3	1.64	0.43
1:A:174[A]:MET:HG3	1:A:257:PHE:HB2	2.00	0.43
1:A:68:THR:HG23	5:A:1217:OLC:H21A	2.01	0.42
5:A:1221:OLC:H11	5:A:1221:OLC:H8	1.85	0.42
1:A:293:ARG:HA	1:A:296:ARG:NH1	2.35	0.41
1:A:280:ASN:O	1:A:284[B]:ASN:ND2	2.53	0.41
1:A:61:PRO:HB2	5:A:1220:OLC:H10	2.03	0.41
1:A:248:PRO:HG2	1:A:276:LEU:HD23	2.02	0.41
5:A:1215:OLC:H2	5:A:1219:OLC:H2A	2.03	0.40
5:A:1219:OLC:H17A	5:A:1221:OLC:H6A	2.02	0.40

There are no symmetry-related clashes.

5.3 Torsion angles [\(i\)](#)

5.3.1 Protein backbone [\(i\)](#)

In the following table, the Percentiles column shows the percent Ramachandran outliers of the chain as a percentile score with respect to all X-ray entries followed by that with respect to entries of similar resolution.

The Analysed column shows the number of residues for which the backbone conformation was analysed, and the total number of residues.

Mol	Chain	Analysed	Favoured	Allowed	Outliers	Percentiles	
1	A	384/434 (88%)	377 (98%)	7 (2%)	0	100	100

There are no Ramachandran outliers to report.

5.3.2 Protein sidechains [i](#)

In the following table, the Percentiles column shows the percent sidechain outliers of the chain as a percentile score with respect to all X-ray entries followed by that with respect to entries of similar resolution.

The Analysed column shows the number of residues for which the sidechain conformation was analysed, and the total number of residues.

Mol	Chain	Analysed	Rotameric	Outliers	Percentiles	
1	A	311/353 (88%)	308 (99%)	3 (1%)	76	90

All (3) residues with a non-rotameric sidechain are listed below:

Mol	Chain	Res	Type
1	A	110	LEU
1	A	175	ASN
1	A	223	SER

Some sidechains can be flipped to improve hydrogen bonding and reduce clashes. There are no such sidechains identified.

5.3.3 RNA [i](#)

There are no RNA molecules in this entry.

5.4 Non-standard residues in protein, DNA, RNA chains [i](#)

There are no non-standard protein/DNA/RNA residues in this entry.

5.5 Carbohydrates [i](#)

There are no carbohydrates in this entry.

5.6 Ligand geometry

Of 23 ligands modelled in this entry, 1 is monoatomic - leaving 22 for Mogul analysis.

In the following table, the Counts columns list the number of bonds (or angles) for which Mogul statistics could be retrieved, the number of bonds (or angles) that are observed in the model and the number of bonds (or angles) that are defined in the Chemical Component Dictionary. The Link column lists molecule types, if any, to which the group is linked. The Z score for a bond length (or angle) is the number of standard deviations the observed value is removed from the expected value. A bond length (or angle) with $|Z| > 2$ is considered an outlier worth inspection. RMSZ is the root-mean-square of all Z scores of the bond lengths (or angles).

Mol	Type	Chain	Res	Link	Bond lengths			Bond angles		
					Counts	RMSZ	# Z > 2	Counts	RMSZ	# Z > 2
5	OLC	A	1215	-	16,16,24	1.17	1 (6%)	17,17,25	0.97	1 (5%)
4	OLA	A	1213	-	7,10,19	0.22	0	6,10,19	0.60	0
5	OLC	A	1219	-	24,24,24	0.96	1 (4%)	25,25,25	0.91	1 (4%)
5	OLC	A	1222	-	21,21,24	0.97	1 (4%)	22,22,25	0.82	1 (4%)
4	OLA	A	1210	-	16,19,19	0.27	0	15,19,19	0.52	0
4	OLA	A	1211	-	11,14,19	0.27	0	10,14,19	0.40	0
4	OLA	A	1206	-	15,18,19	0.25	0	14,18,19	0.56	0
5	OLC	A	1216	-	15,15,24	1.16	1 (6%)	16,16,25	1.06	1 (6%)
3	CLR	A	1203	-	31,31,31	0.66	0	48,48,48	0.98	2 (4%)
3	CLR	A	1204	-	31,31,31	0.64	0	48,48,48	0.94	0
4	OLA	A	1209	-	14,17,19	0.22	0	13,17,19	0.61	0
4	OLA	A	1207	-	5,8,19	0.24	0	4,8,19	0.57	0
5	OLC	A	1220	-	24,24,24	0.92	1 (4%)	25,25,25	0.90	1 (4%)
4	OLA	A	1208	-	5,8,19	0.27	0	4,8,19	0.52	0
5	OLC	A	1218	-	16,16,24	1.13	1 (6%)	17,17,25	1.14	2 (11%)
4	OLA	A	1212	-	10,13,19	0.30	0	8,13,19	0.56	0
2	9XW	A	1201	-	27,31,31	2.22	8 (29%)	34,45,45	1.81	6 (17%)
5	OLC	A	1217	-	17,17,24	1.11	1 (5%)	18,18,25	0.98	1 (5%)
4	OLA	A	1205	-	16,19,19	0.24	0	15,19,19	0.57	0
3	CLR	A	1202	-	31,31,31	0.66	0	48,48,48	0.90	1 (2%)
4	OLA	A	1214	-	5,8,19	0.27	0	4,8,19	0.45	0
5	OLC	A	1221	-	23,23,24	0.98	1 (4%)	24,24,25	0.86	1 (4%)

In the following table, the Chirals column lists the number of chiral outliers, the number of chiral centers analysed, the number of these observed in the model and the number defined in the Chemical Component Dictionary. Similar counts are reported in the Torsion and Rings columns. '-' means no outliers of that kind were identified.

Mol	Type	Chain	Res	Link	Chirals	Torsions	Rings
5	OLC	A	1215	-	-	3/16/16/24	-
4	OLA	A	1213	-	-	0/6/8/17	-
5	OLC	A	1219	-	-	5/24/24/24	-
5	OLC	A	1222	-	-	8/21/21/24	-
4	OLA	A	1210	-	-	4/15/17/17	-
4	OLA	A	1211	-	-	5/10/12/17	-
4	OLA	A	1206	-	-	3/14/16/17	-
5	OLC	A	1216	-	-	2/15/15/24	-
3	CLR	A	1203	-	-	5/10/68/68	0/4/4/4
3	CLR	A	1204	-	-	3/10/68/68	0/4/4/4
4	OLA	A	1209	-	-	4/13/15/17	-
4	OLA	A	1207	-	-	0/4/6/17	-
5	OLC	A	1220	-	-	2/24/24/24	-
4	OLA	A	1208	-	-	0/4/6/17	-
5	OLC	A	1218	-	-	2/16/16/24	-
4	OLA	A	1212	-	-	3/9/11/17	-
2	9XW	A	1201	-	-	4/12/34/34	0/4/4/4
5	OLC	A	1217	-	-	2/17/17/24	-
4	OLA	A	1205	-	-	4/15/17/17	-
3	CLR	A	1202	-	-	1/10/68/68	0/4/4/4
4	OLA	A	1214	-	-	2/4/6/17	-
5	OLC	A	1221	-	-	1/23/23/24	-

All (16) bond length outliers are listed below:

Mol	Chain	Res	Type	Atoms	Z	Observed(Å)	Ideal(Å)
2	A	1201	9XW	C17-N19	6.22	1.48	1.36
5	A	1221	OLC	O20-C1	4.45	1.46	1.33
5	A	1215	OLC	O20-C1	4.44	1.46	1.33
2	A	1201	9XW	C17-N16	4.42	1.45	1.37
5	A	1219	OLC	O20-C1	4.42	1.46	1.33
5	A	1217	OLC	O20-C1	4.34	1.46	1.33
5	A	1216	OLC	O20-C1	4.33	1.46	1.33
2	A	1201	9XW	C15-N16	4.29	1.44	1.36
5	A	1220	OLC	O20-C1	4.29	1.45	1.33
5	A	1218	OLC	O20-C1	4.27	1.45	1.33
2	A	1201	9XW	O02-C03	4.23	1.44	1.36
5	A	1222	OLC	O20-C1	4.23	1.45	1.33
2	A	1201	9XW	C12-N07	-3.09	1.41	1.46

Continued on next page...

Continued from previous page...

Mol	Chain	Res	Type	Atoms	Z	Observed(Å)	Ideal(Å)
2	A	1201	9XW	C05-C04	2.54	1.43	1.38
2	A	1201	9XW	C25-C22	-2.29	1.50	1.53
2	A	1201	9XW	C21-C22	-2.03	1.51	1.53

All (18) bond angle outliers are listed below:

Mol	Chain	Res	Type	Atoms	Z	Observed(°)	Ideal(°)
2	A	1201	9XW	C06-C13-S14	5.74	135.70	124.94
2	A	1201	9XW	O02-C03-C28	4.56	119.71	115.03
2	A	1201	9XW	C01-O02-C03	-3.13	113.36	117.75
2	A	1201	9XW	C23-C22-C25	-3.10	107.63	111.32
5	A	1218	OLC	O20-C1-C2	3.09	121.62	111.91
5	A	1219	OLC	O20-C1-C2	3.03	121.40	111.91
5	A	1216	OLC	O20-C1-C2	2.91	121.03	111.91
5	A	1220	OLC	O20-C1-C2	2.77	120.61	111.91
5	A	1221	OLC	O20-C1-C2	2.68	120.33	111.91
5	A	1215	OLC	O20-C1-C2	2.63	120.15	111.91
5	A	1217	OLC	O20-C1-C2	2.45	119.60	111.91
2	A	1201	9XW	C25-C22-C21	2.42	113.52	109.88
2	A	1201	9XW	O02-C03-C04	-2.36	120.34	124.24
3	A	1203	CLR	C13-C17-C20	-2.28	115.91	119.49
5	A	1222	OLC	O20-C1-C2	2.27	119.02	111.91
3	A	1202	CLR	C4-C5-C10	2.26	119.42	116.42
3	A	1203	CLR	C3-C4-C5	-2.14	108.39	112.03
5	A	1218	OLC	O20-C1-O19	-2.04	118.46	123.59

There are no chirality outliers.

All (63) torsion outliers are listed below:

Mol	Chain	Res	Type	Atoms
5	A	1219	OLC	O20-C21-C22-C24
4	A	1211	OLA	C10-C11-C12-C13
5	A	1216	OLC	C21-C22-C24-O25
2	A	1201	9XW	C28-C03-O02-C01
3	A	1203	CLR	C20-C22-C23-C24
5	A	1219	OLC	O20-C21-C22-O23
2	A	1201	9XW	C13-C06-N07-C08
2	A	1201	9XW	C05-C06-N07-C08
3	A	1203	CLR	C21-C20-C22-C23
5	A	1218	OLC	O20-C21-C22-O23
3	A	1202	CLR	C21-C20-C22-C23
5	A	1219	OLC	C3-C4-C5-C6

Continued on next page...

Continued from previous page...

Mol	Chain	Res	Type	Atoms
4	A	1214	OLA	C2-C3-C4-C5
5	A	1219	OLC	C6-C7-C8-C9
5	A	1218	OLC	O20-C21-C22-C24
4	A	1210	OLA	C5-C6-C7-C8
5	A	1220	OLC	C3-C4-C5-C6
5	A	1222	OLC	C2-C1-O20-C21
4	A	1206	OLA	C5-C6-C7-C8
4	A	1209	OLA	C12-C13-C14-C15
4	A	1211	OLA	C5-C6-C7-C8
4	A	1205	OLA	C3-C4-C5-C6
2	A	1201	9XW	C04-C03-O02-C01
5	A	1222	OLC	O19-C1-O20-C21
5	A	1220	OLC	C1-C2-C3-C4
4	A	1210	OLA	C2-C3-C4-C5
4	A	1211	OLA	C6-C7-C8-C9
4	A	1206	OLA	C6-C7-C8-C9
5	A	1222	OLC	C5-C6-C7-C8
5	A	1222	OLC	C10-C11-C12-C13
4	A	1209	OLA	C2-C3-C4-C5
4	A	1212	OLA	C3-C4-C5-C6
5	A	1217	OLC	C6-C7-C8-C9
4	A	1211	OLA	C3-C4-C5-C6
4	A	1209	OLA	C3-C4-C5-C6
5	A	1215	OLC	C5-C6-C7-C8
4	A	1209	OLA	C13-C14-C15-C16
4	A	1205	OLA	C4-C5-C6-C7
5	A	1216	OLC	O23-C22-C24-O25
3	A	1204	CLR	C23-C24-C25-C27
4	A	1212	OLA	C9-C10-C11-C12
5	A	1222	OLC	C11-C12-C13-C14
5	A	1219	OLC	C11-C12-C13-C14
5	A	1215	OLC	C6-C7-C8-C9
4	A	1210	OLA	C12-C13-C14-C15
4	A	1205	OLA	C5-C6-C7-C8
4	A	1205	OLA	C11-C12-C13-C14
5	A	1222	OLC	C1-C2-C3-C4
3	A	1204	CLR	C22-C23-C24-C25
5	A	1222	OLC	C2-C3-C4-C5
3	A	1203	CLR	C13-C17-C20-C22
5	A	1217	OLC	O20-C21-C22-O23
3	A	1204	CLR	C23-C24-C25-C26
3	A	1203	CLR	C13-C17-C20-C21

Continued on next page...

Continued from previous page...

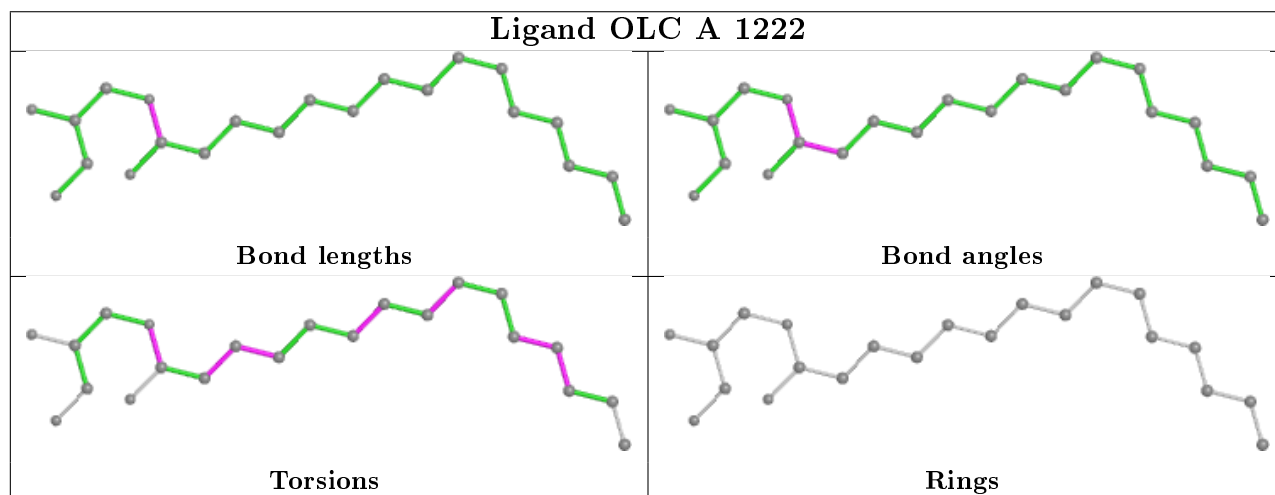
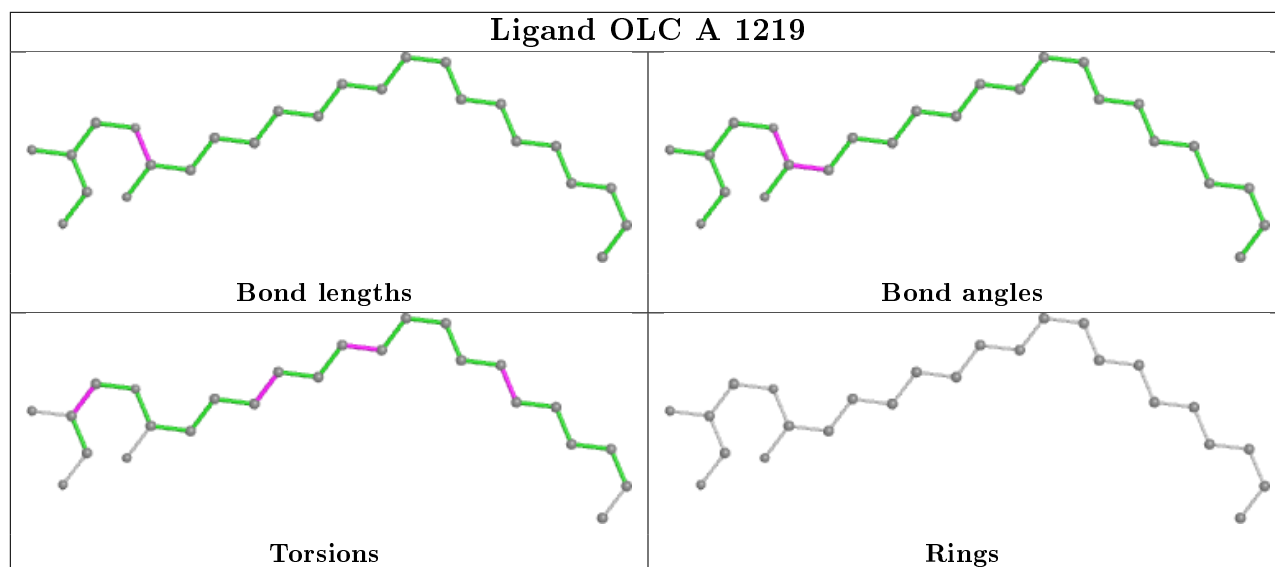
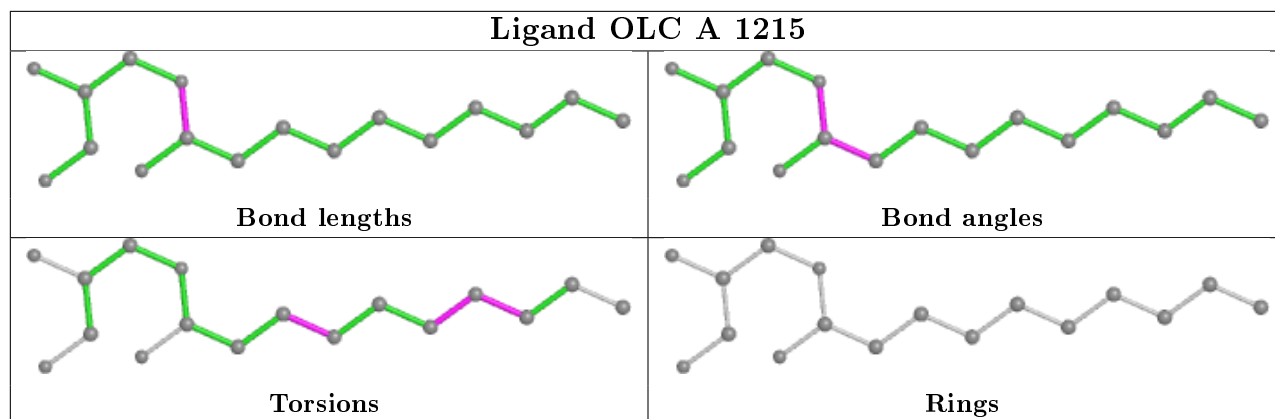
Mol	Chain	Res	Type	Atoms
3	A	1203	CLR	C16-C17-C20-C22
4	A	1212	OLA	C7-C8-C9-C10
4	A	1206	OLA	C3-C4-C5-C6
4	A	1214	OLA	C4-C5-C6-C7
5	A	1215	OLC	C2-C3-C4-C5
5	A	1221	OLC	C1-C2-C3-C4
5	A	1222	OLC	C7-C8-C9-C10
4	A	1210	OLA	C14-C15-C16-C17
4	A	1211	OLA	C1-C2-C3-C4

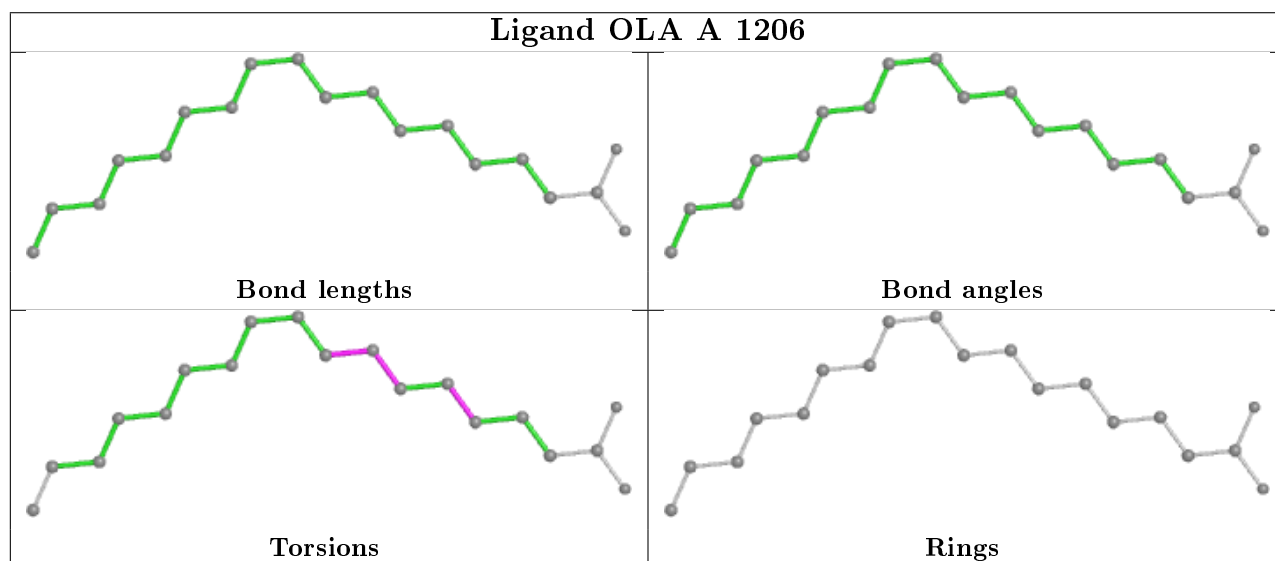
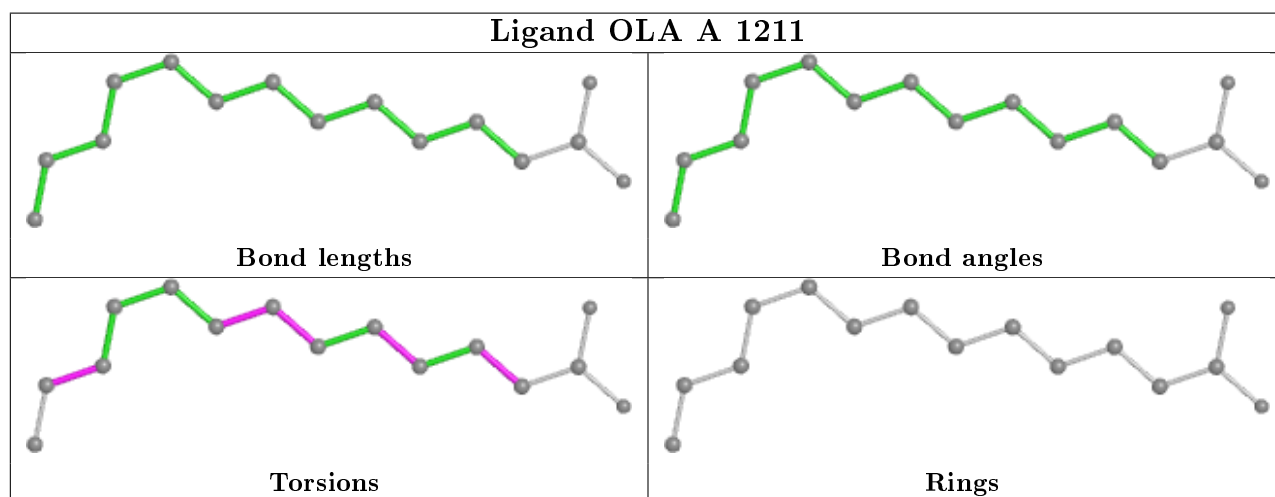
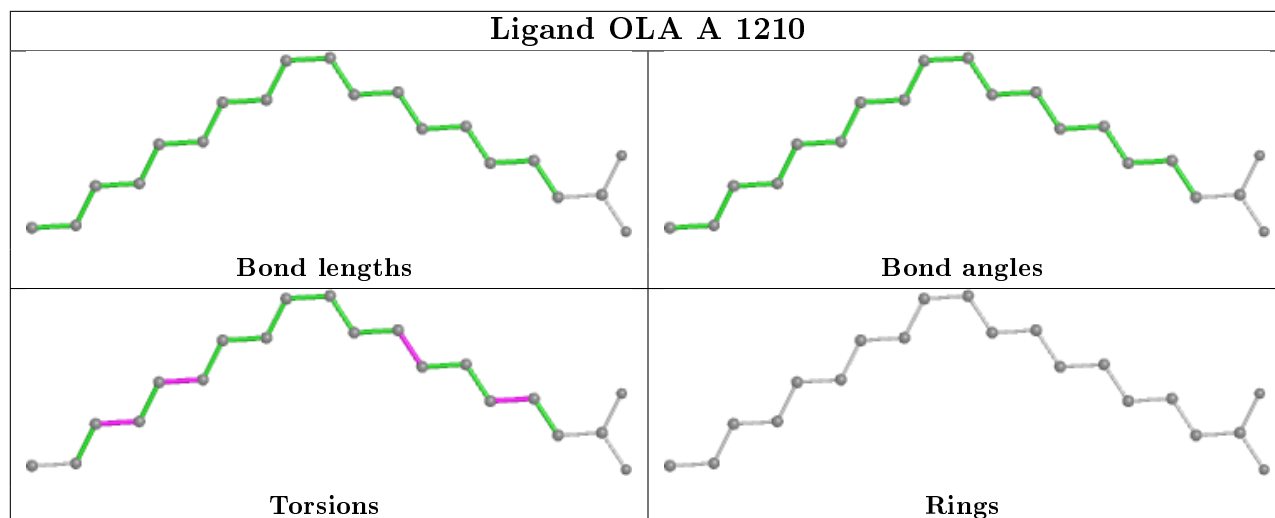
There are no ring outliers.

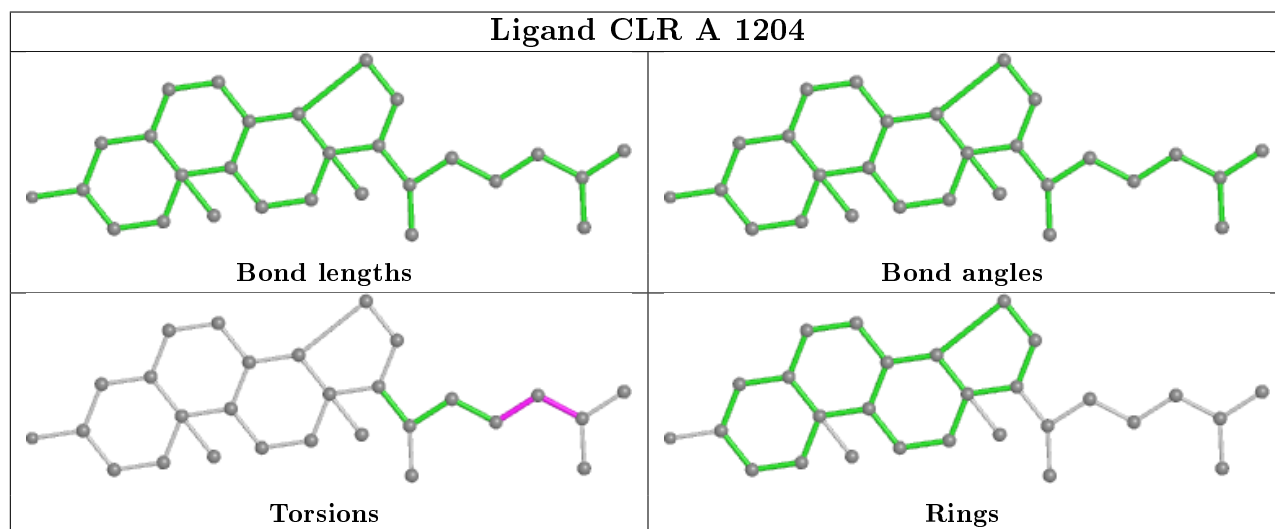
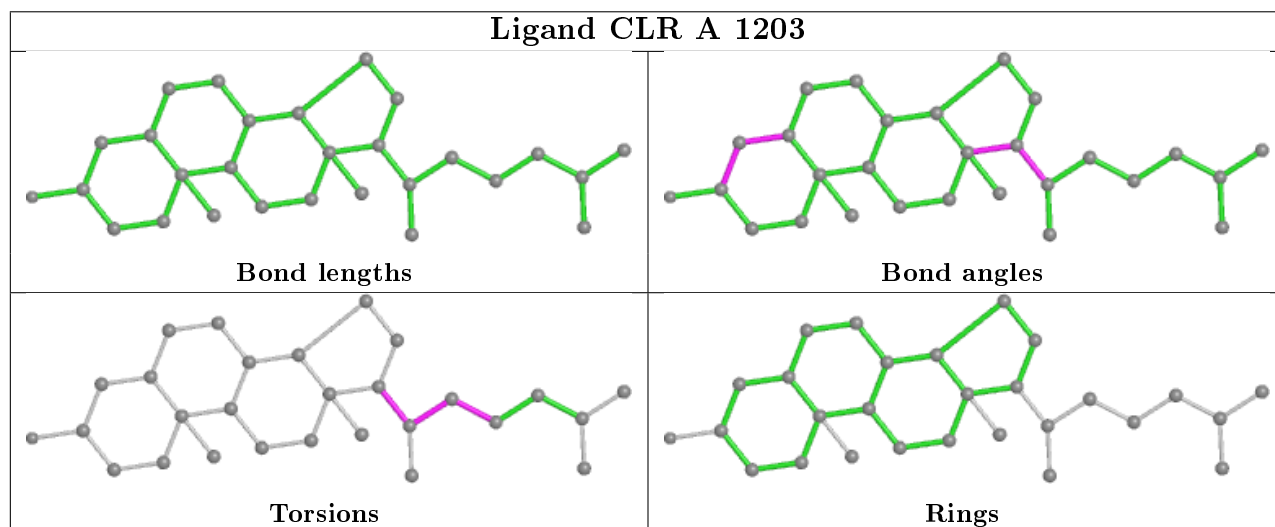
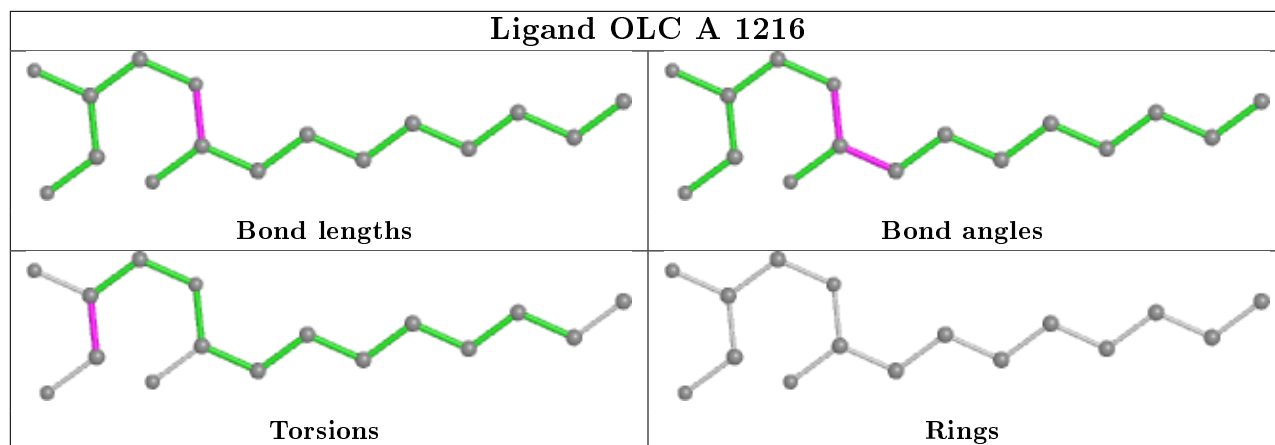
10 monomers are involved in 13 short contacts:

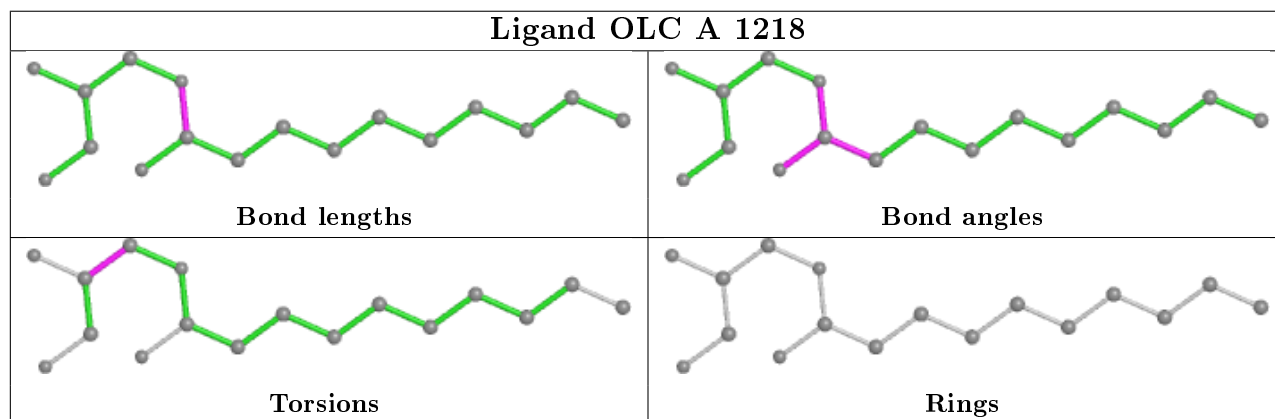
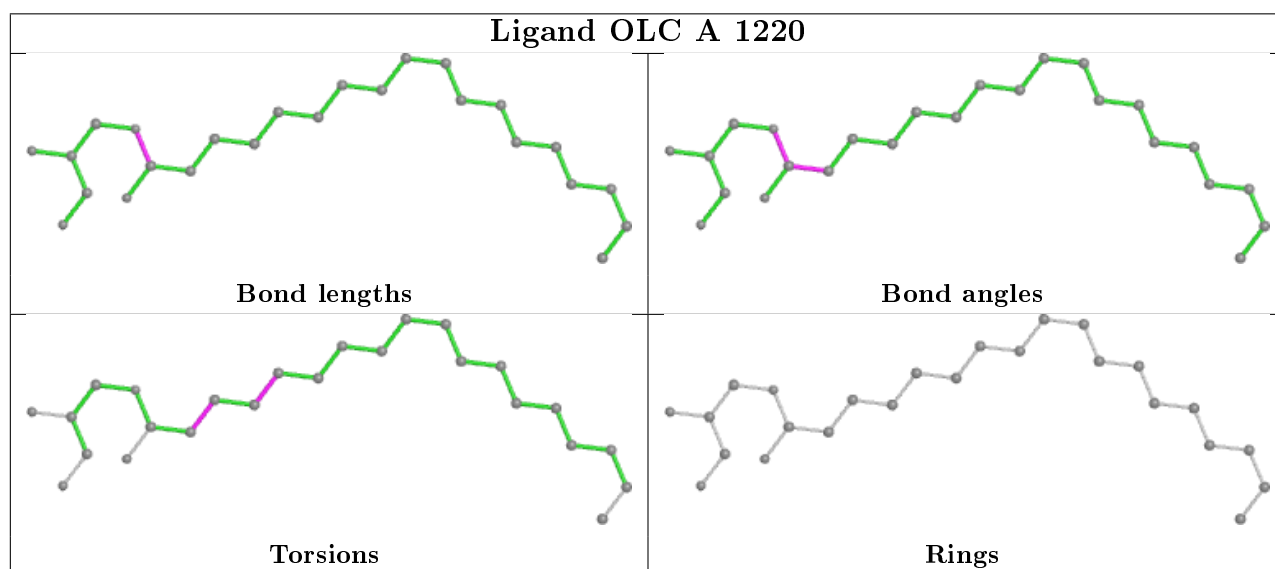
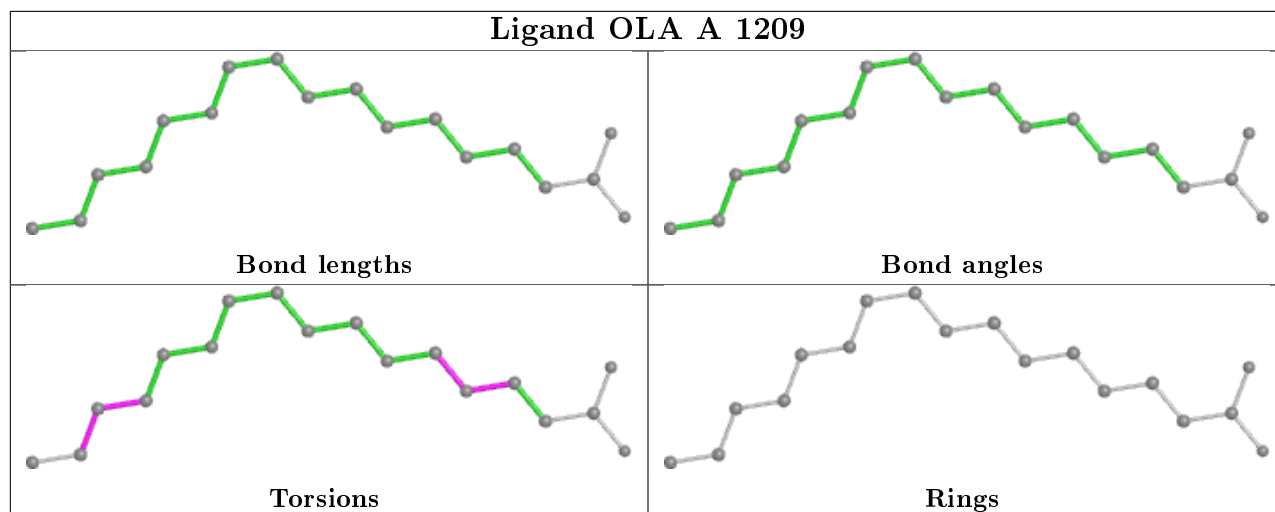
Mol	Chain	Res	Type	Clashes	Symm-Clashes
5	A	1215	OLC	2	0
5	A	1219	OLC	4	0
4	A	1210	OLA	1	0
4	A	1211	OLA	1	0
3	A	1204	CLR	1	0
5	A	1220	OLC	2	0
4	A	1212	OLA	1	0
5	A	1217	OLC	2	0
4	A	1205	OLA	3	0
5	A	1221	OLC	3	0

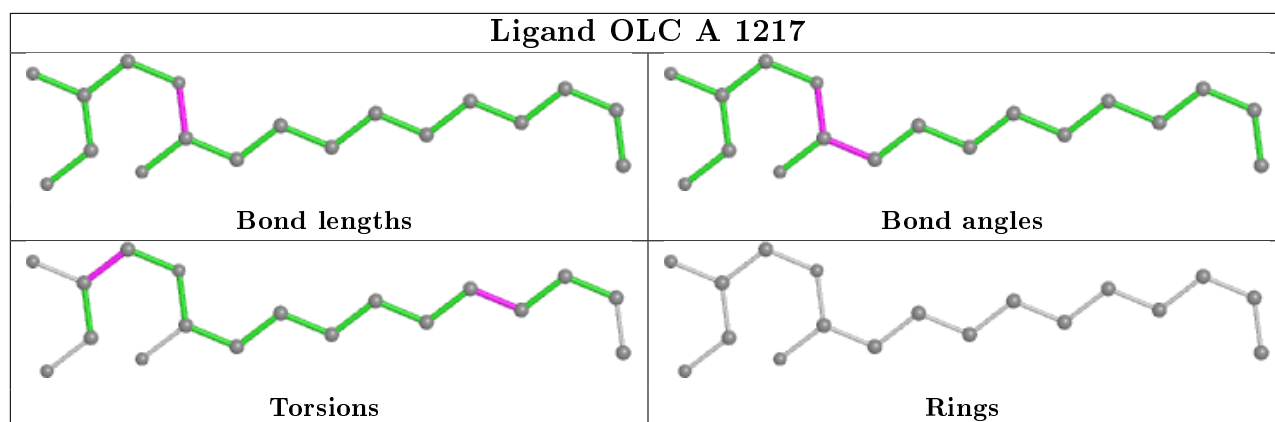
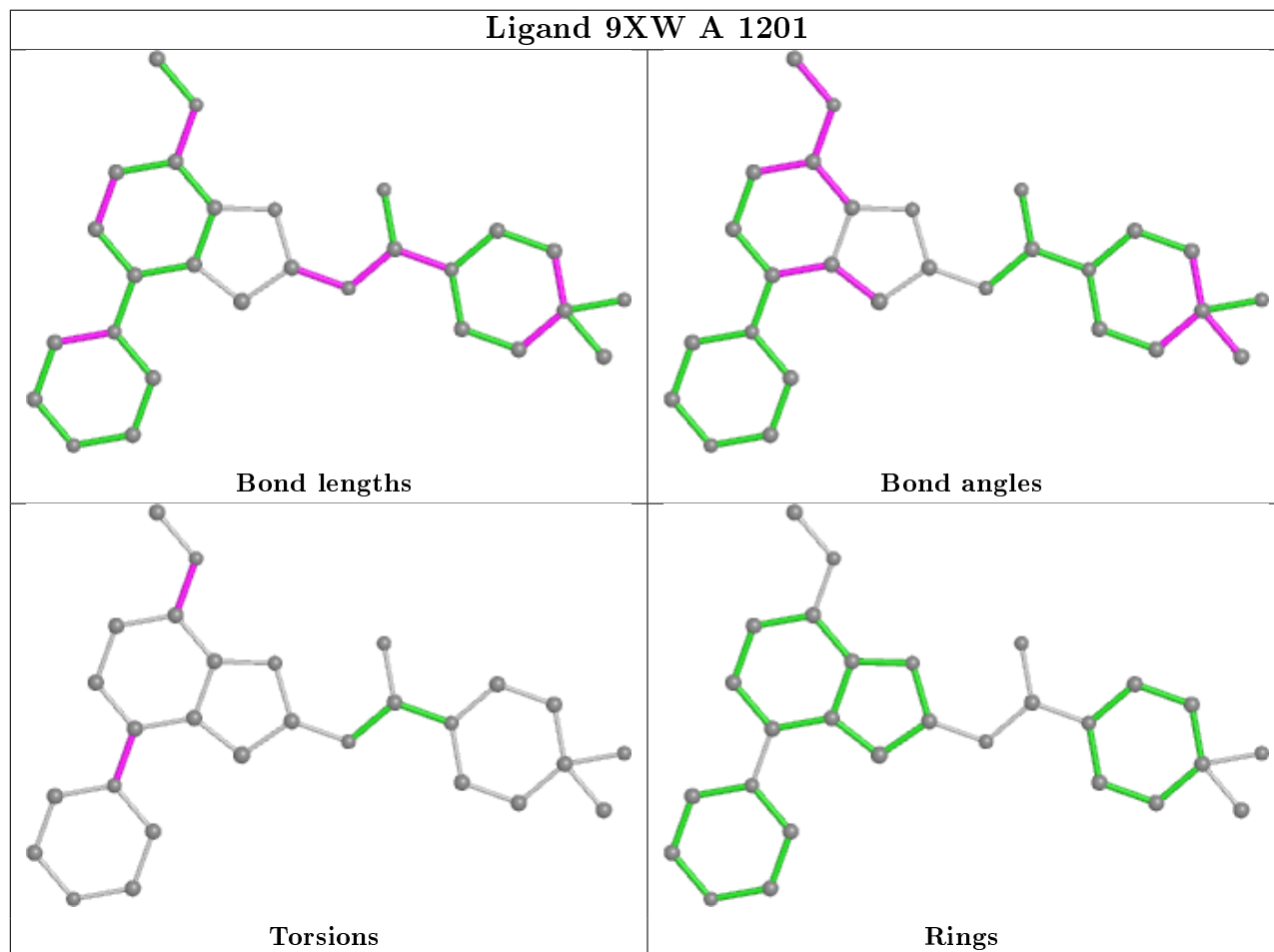
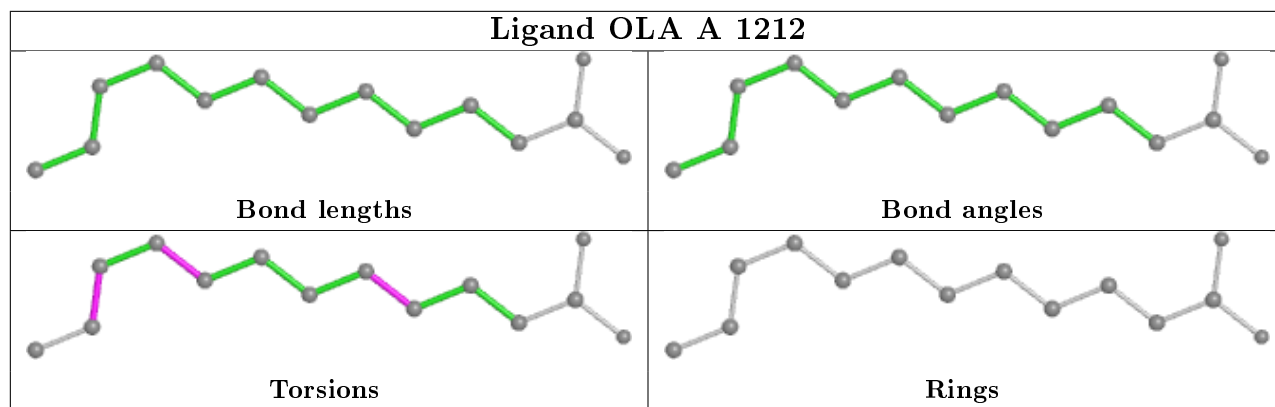
The following is a two-dimensional graphical depiction of Mogul quality analysis of bond lengths, bond angles, torsion angles, and ring geometry for all instances of the Ligand of Interest. In addition, ligands with molecular weight > 250 and outliers as shown on the validation Tables will also be included. For torsion angles, if less than 5% of the Mogul distribution of torsion angles is within 10 degrees of the torsion angle in question, then that torsion angle is considered an outlier. Any bond that is central to one or more torsion angles identified as an outlier by Mogul will be highlighted in the graph. For rings, the root-mean-square deviation (RMSD) between the ring in question and similar rings identified by Mogul is calculated over all ring torsion angles. If the average RMSD is greater than 60 degrees and the minimal RMSD between the ring in question and any Mogul-identified rings is also greater than 60 degrees, then that ring is considered an outlier. The outliers are highlighted in purple. The color gray indicates Mogul did not find sufficient equivalents in the CSD to analyse the geometry.

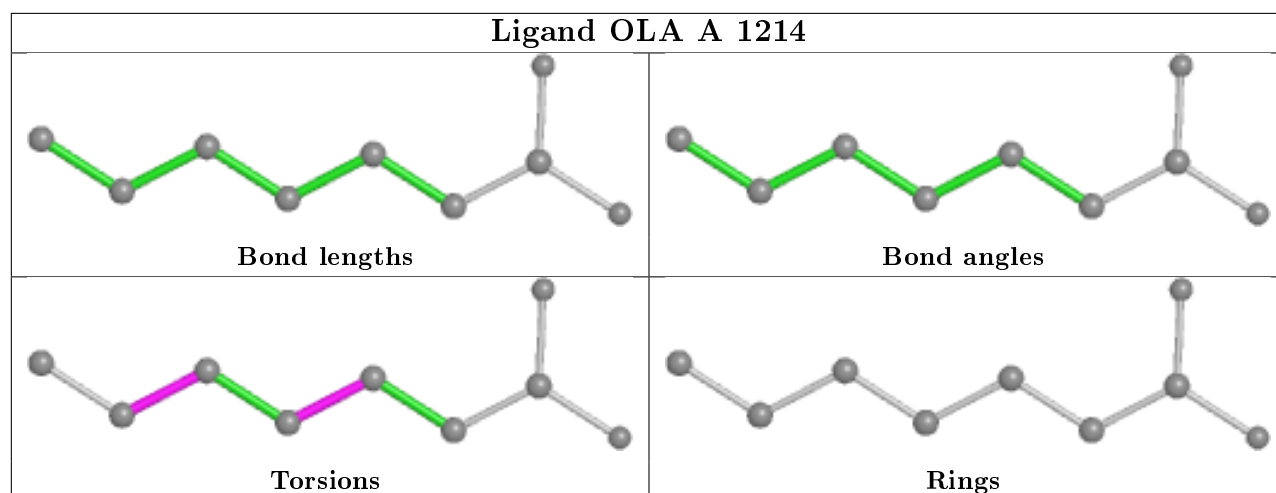
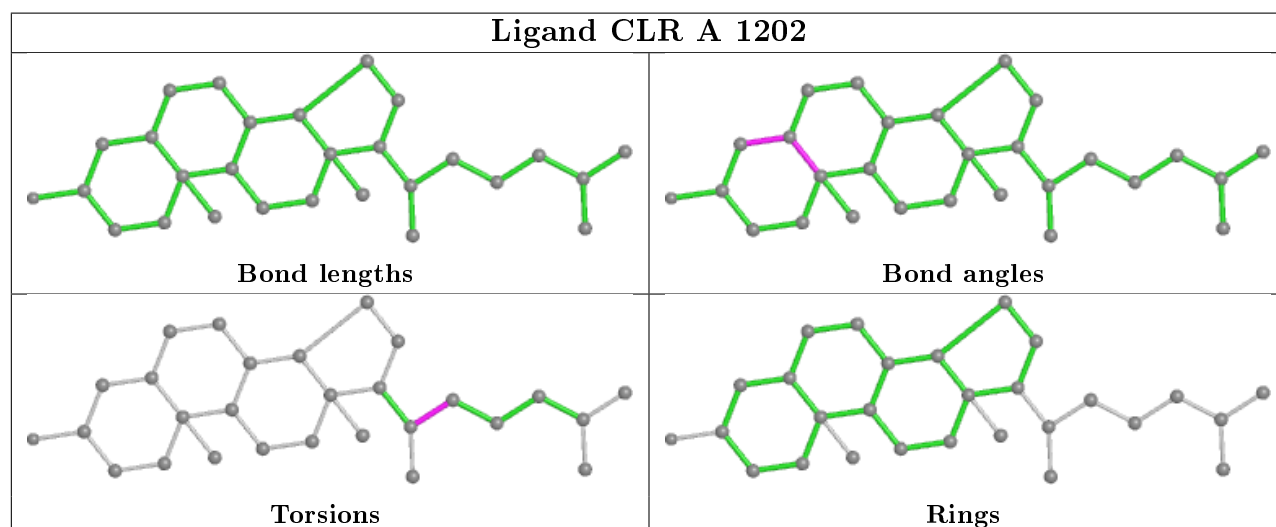
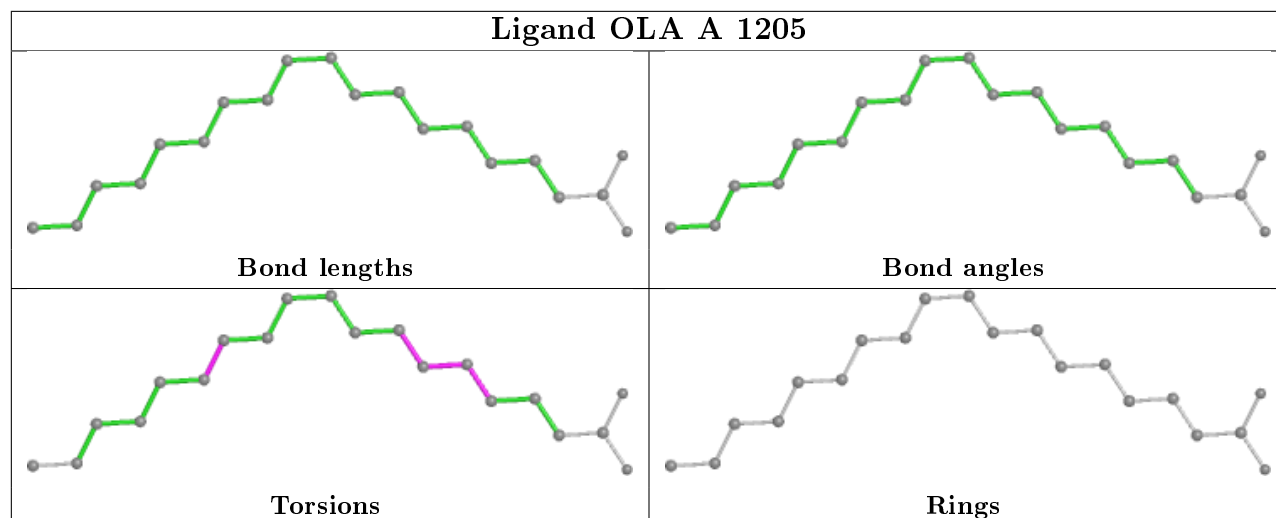


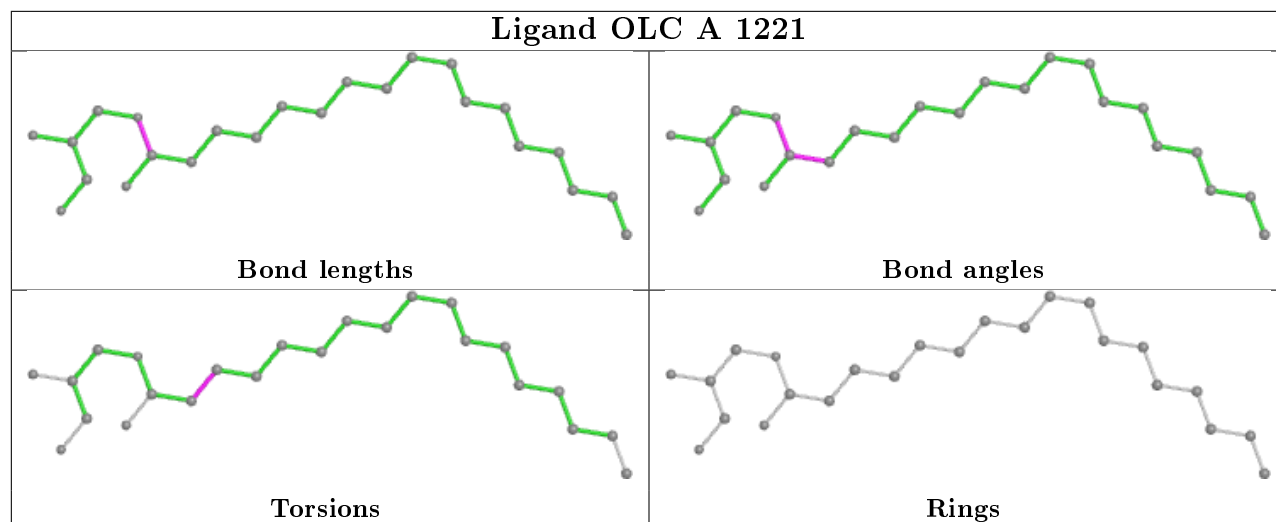












5.7 Other polymers [i](#)

There are no such residues in this entry.

5.8 Polymer linkage issues [i](#)

There are no chain breaks in this entry.

6 Fit of model and data [i](#)

6.1 Protein, DNA and RNA chains [i](#)

In the following table, the column labelled '#RSRZ> 2' contains the number (and percentage) of RSRZ outliers, followed by percent RSRZ outliers for the chain as percentile scores relative to all X-ray entries and entries of similar resolution. The OWAB column contains the minimum, median, 95th percentile and maximum values of the occupancy-weighted average B-factor per residue. The column labelled 'Q< 0.9' lists the number of (and percentage) of residues with an average occupancy less than 0.9.

Mol	Chain	Analysed	<RSRZ>	#RSRZ>2	OWAB(Å ²)	Q<0.9
1	A	385/434 (88%)	-0.20	9 (2%) 60 39	30, 70, 148, 258	0

All (9) RSRZ outliers are listed below:

Mol	Chain	Res	Type	RSRZ
1	A	1080	ASN	3.4
1	A	1021	ASP	3.2
1	A	1101	TYR	2.9
1	A	1063	HIS	2.6
1	A	-1	GLY	2.6
1	A	1010	LEU	2.4
1	A	1073	ASP	2.3
1	A	1074	ASP	2.2
1	A	1102	ILE	2.1

6.2 Non-standard residues in protein, DNA, RNA chains [i](#)

There are no non-standard protein/DNA/RNA residues in this entry.

6.3 Carbohydrates [i](#)

There are no carbohydrates in this entry.

6.4 Ligands [i](#)

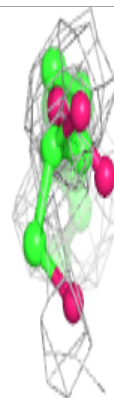
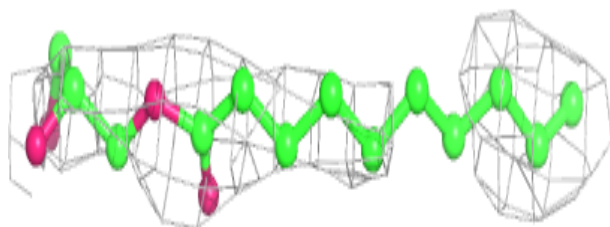
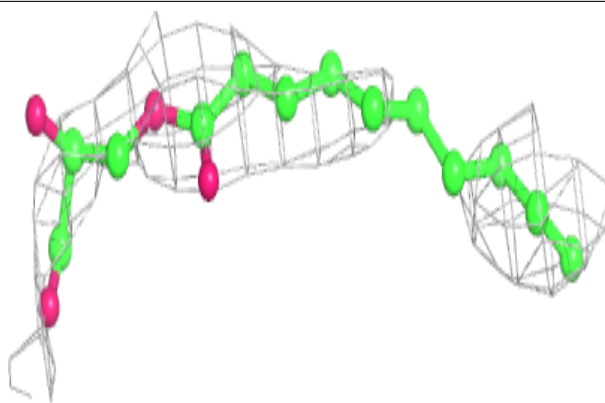
In the following table, the Atoms column lists the number of modelled atoms in the group and the number defined in the chemical component dictionary. The B-factors column lists the minimum, median, 95th percentile and maximum values of B factors of atoms in the group. The column labelled 'Q< 0.9' lists the number of atoms with occupancy less than 0.9.

Mol	Type	Chain	Res	Atoms	RSCC	RSR	B-factors(\AA^2)	Q<0.9
6	NA	A	1223	1/1	0.64	0.40	82,82,82,82	0
5	OLC	A	1218	17/25	0.67	0.43	87,108,121,121	0
4	OLA	A	1212	14/20	0.73	0.35	81,90,94,94	0
4	OLA	A	1213	11/20	0.74	0.34	92,103,122,123	0
4	OLA	A	1209	18/20	0.74	0.34	67,83,130,133	0
4	OLA	A	1206	19/20	0.75	0.34	66,97,107,108	0
5	OLC	A	1217	18/25	0.77	0.34	71,121,140,140	0
4	OLA	A	1211	15/20	0.78	0.41	86,92,110,111	0
4	OLA	A	1210	20/20	0.78	0.36	52,89,104,106	0
5	OLC	A	1222	22/25	0.80	0.41	60,77,112,125	0
5	OLC	A	1221	24/25	0.80	0.36	56,75,89,95	0
5	OLC	A	1215	17/25	0.82	0.31	48,79,101,102	0
4	OLA	A	1205	20/20	0.83	0.34	71,87,94,96	0
5	OLC	A	1219	25/25	0.83	0.32	56,80,98,103	0
3	CLR	A	1202	28/28	0.85	0.37	78,97,109,116	0
5	OLC	A	1220	25/25	0.85	0.40	63,94,106,111	0
5	OLC	A	1216	16/25	0.86	0.31	55,77,91,96	0
3	CLR	A	1203	28/28	0.87	0.26	74,80,86,88	0
4	OLA	A	1208	9/20	0.88	0.40	48,58,72,72	0
4	OLA	A	1214	9/20	0.89	0.29	60,66,78,79	0
3	CLR	A	1204	28/28	0.89	0.41	66,75,84,87	0
4	OLA	A	1207	9/20	0.95	0.29	45,53,85,87	0
2	9XW	A	1201	28/28	0.96	0.19	39,48,58,64	0

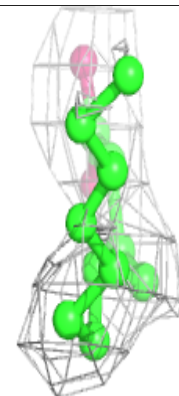
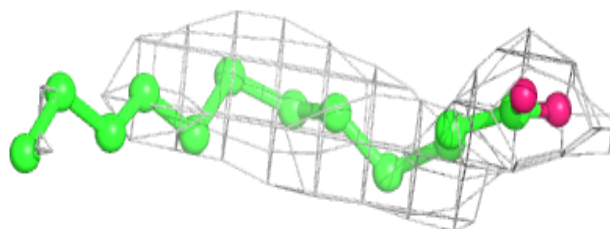
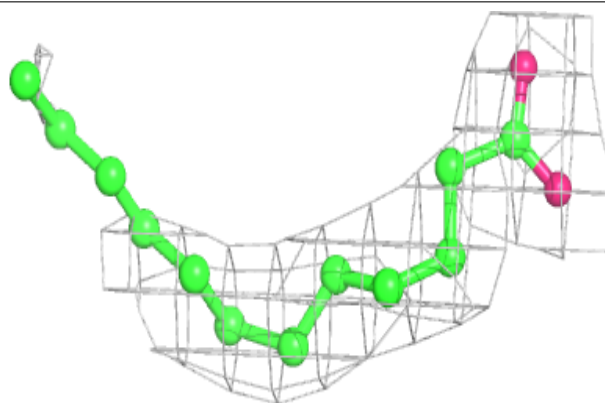
The following is a graphical depiction of the model fit to experimental electron density of all instances of the Ligand of Interest. In addition, ligands with molecular weight > 250 and outliers as shown on the geometry validation Tables will also be included. Each fit is shown from different orientation to approximate a three-dimensional view.

Electron density around OLC A 1218:

$2mF_o-DF_c$ (at 0.7 rmsd) in gray
 mF_o-DF_c (at 3 rmsd) in purple (negative)
and green (positive)

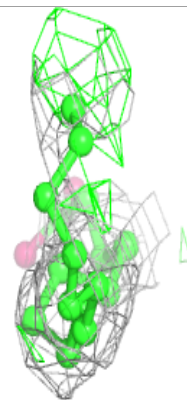
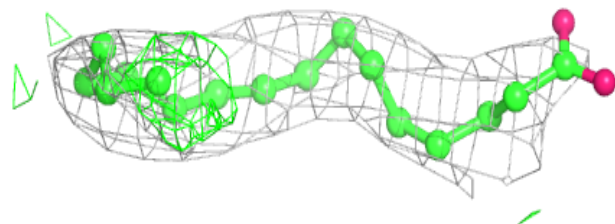
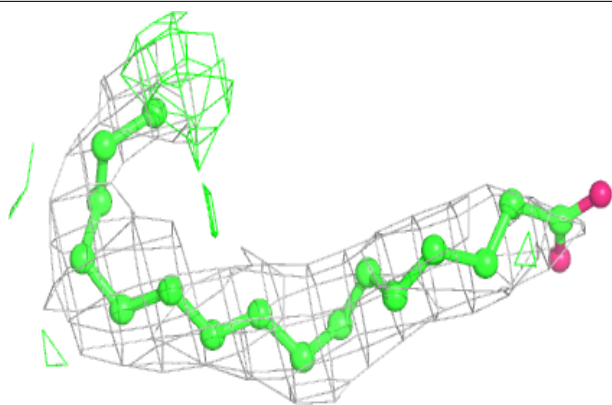
**Electron density around OLA A 1212:**

$2mF_o-DF_c$ (at 0.7 rmsd) in gray
 mF_o-DF_c (at 3 rmsd) in purple (negative)
and green (positive)

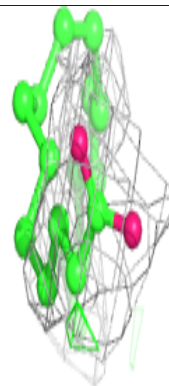
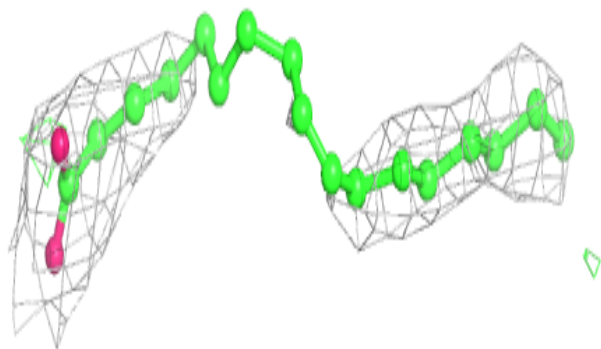
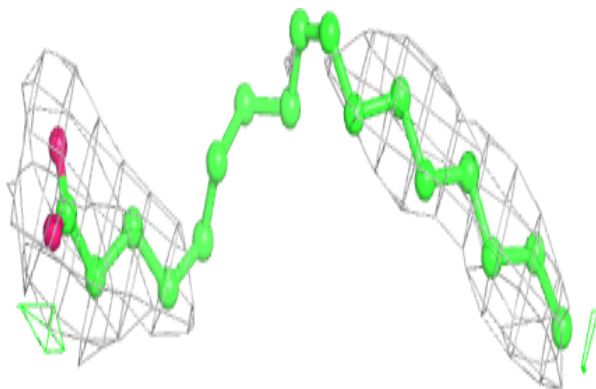


Electron density around OLA A 1209:

$2mF_o-DF_c$ (at 0.7 rmsd) in gray
 mF_o-DF_c (at 3 rmsd) in purple (negative)
and green (positive)

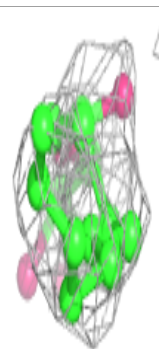
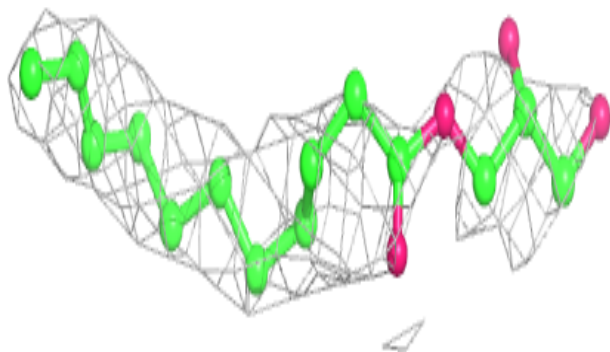
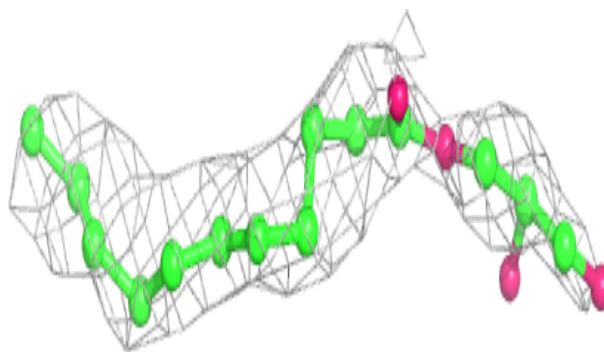
**Electron density around OLA A 1206:**

$2mF_o-DF_c$ (at 0.7 rmsd) in gray
 mF_o-DF_c (at 3 rmsd) in purple (negative)
and green (positive)

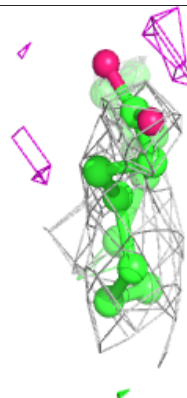
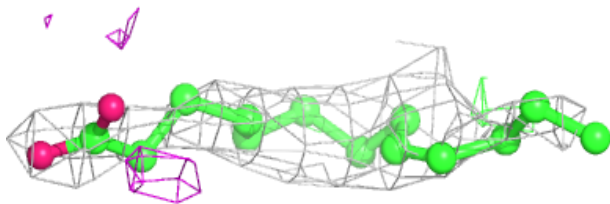
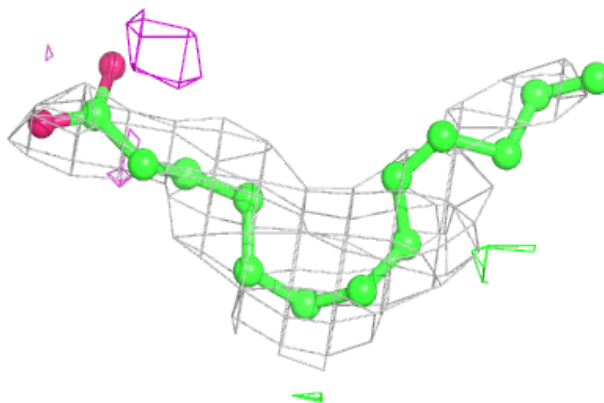


Electron density around OLC A 1217:

$2mF_o-DF_c$ (at 0.7 rmsd) in gray
 mF_o-DF_c (at 3 rmsd) in purple (negative)
and green (positive)

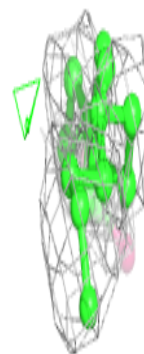
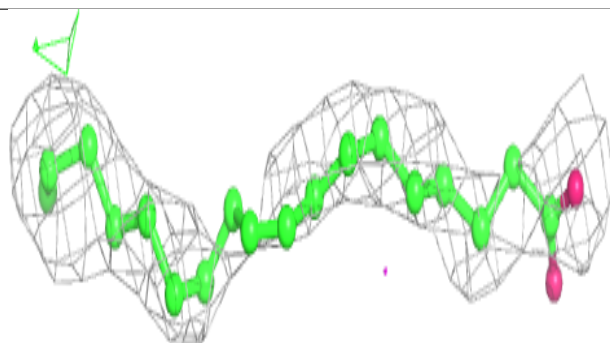
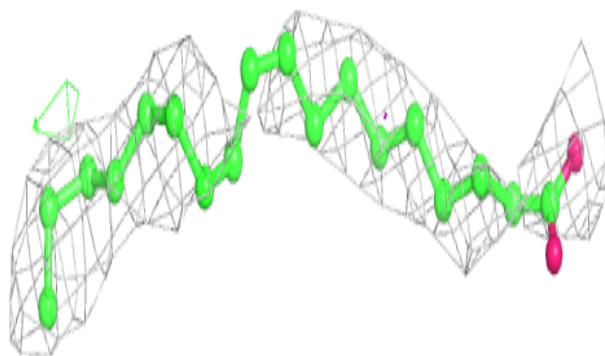
**Electron density around OLA A 1211:**

$2mF_o-DF_c$ (at 0.7 rmsd) in gray
 mF_o-DF_c (at 3 rmsd) in purple (negative)
and green (positive)

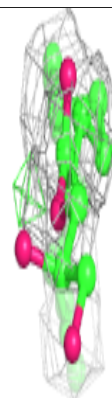
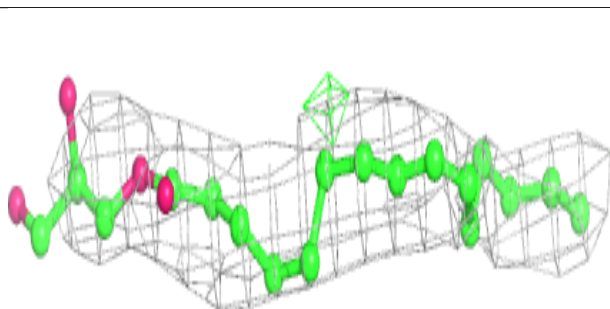
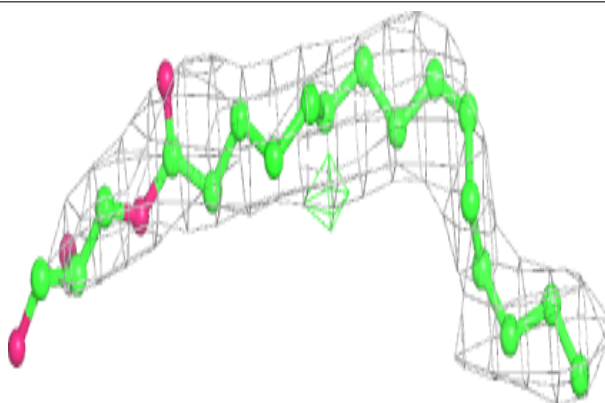


Electron density around OLA A 1210:

$2mF_o-DF_c$ (at 0.7 rmsd) in gray
 mF_o-DF_c (at 3 rmsd) in purple (negative)
and green (positive)

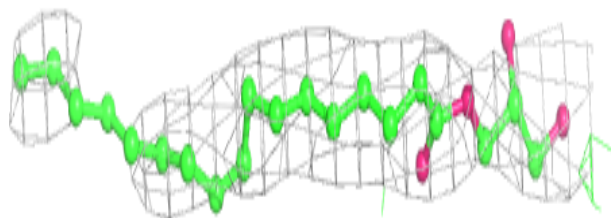
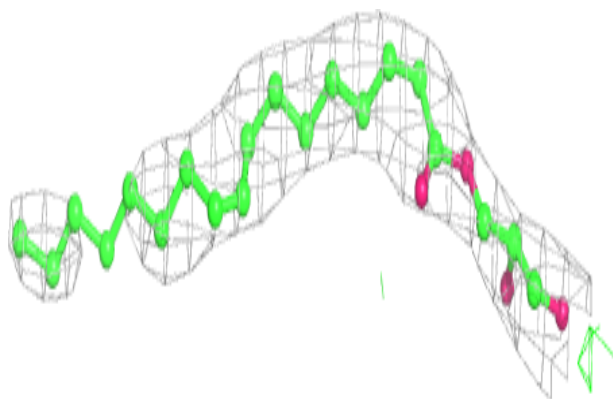
**Electron density around OLC A 1222:**

$2mF_o-DF_c$ (at 0.7 rmsd) in gray
 mF_o-DF_c (at 3 rmsd) in purple (negative)
and green (positive)

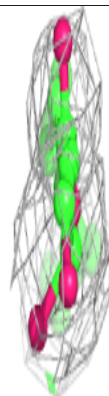
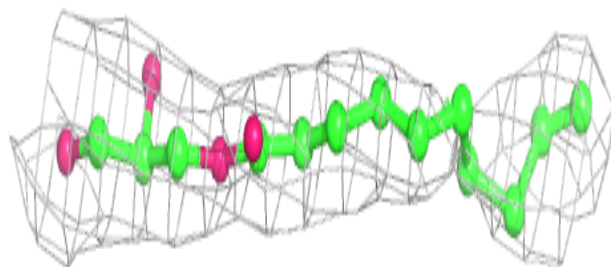
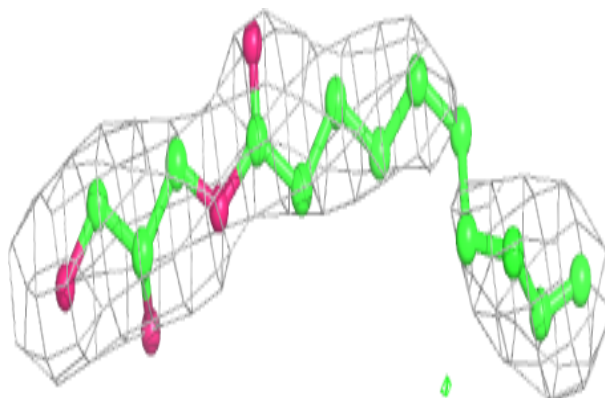


Electron density around OLC A 1221:

$2mF_o-DF_c$ (at 0.7 rmsd) in gray
 mF_o-DF_c (at 3 rmsd) in purple (negative)
and green (positive)

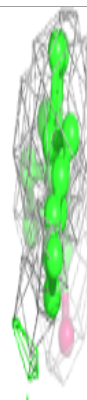
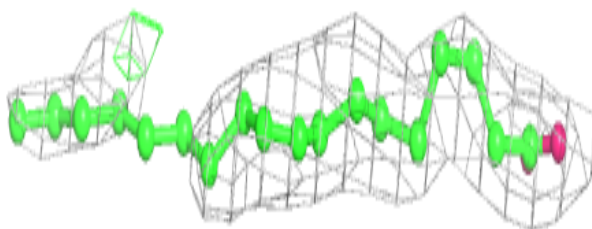
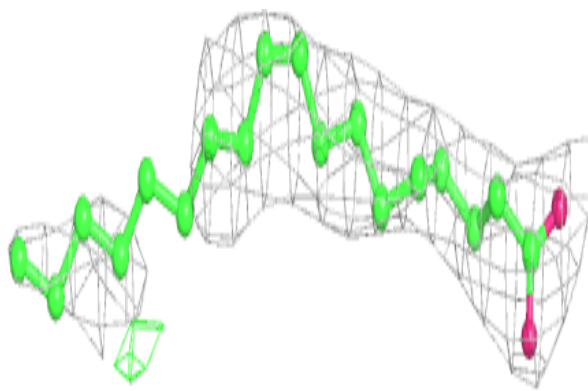
**Electron density around OLC A 1215:**

$2mF_o-DF_c$ (at 0.7 rmsd) in gray
 mF_o-DF_c (at 3 rmsd) in purple (negative)
and green (positive)

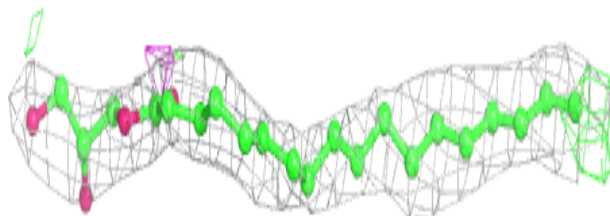
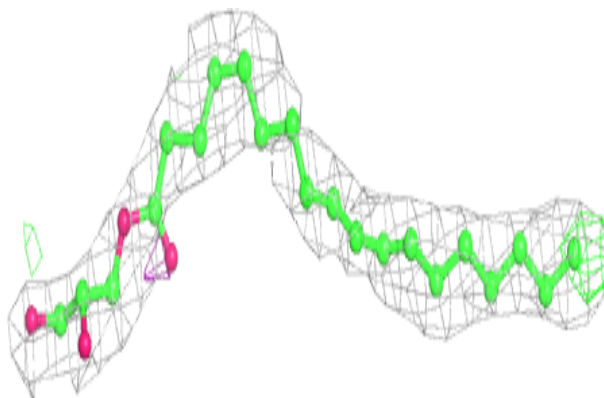


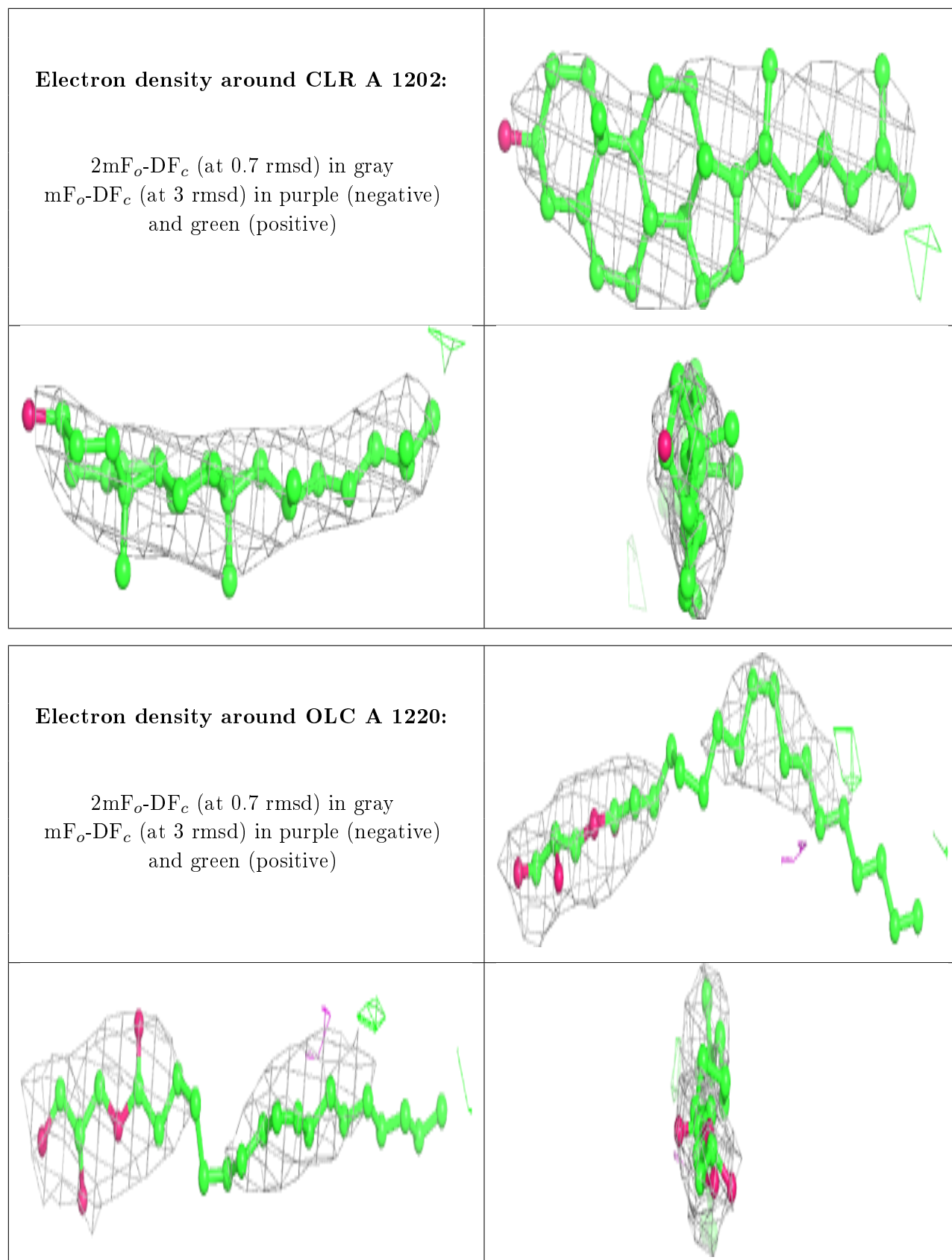
Electron density around OLA A 1205:

$2mF_o-DF_c$ (at 0.7 rmsd) in gray
 mF_o-DF_c (at 3 rmsd) in purple (negative)
and green (positive)

**Electron density around OLC A 1219:**

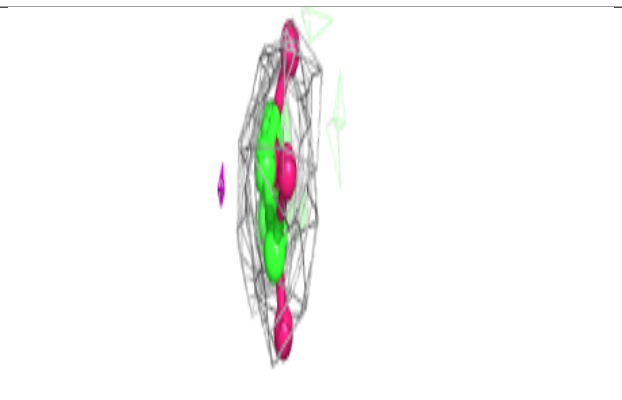
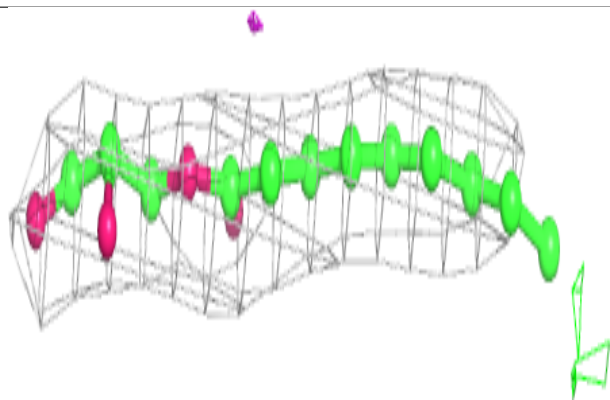
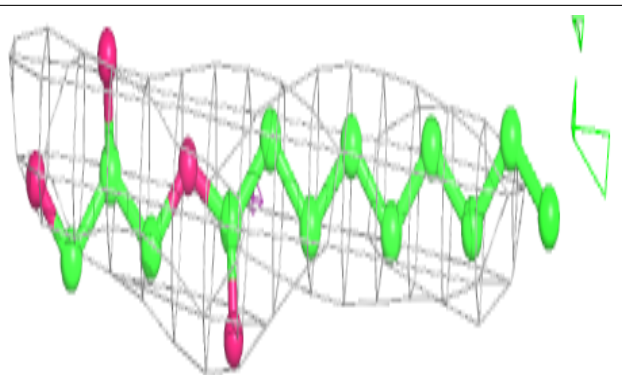
$2mF_o-DF_c$ (at 0.7 rmsd) in gray
 mF_o-DF_c (at 3 rmsd) in purple (negative)
and green (positive)



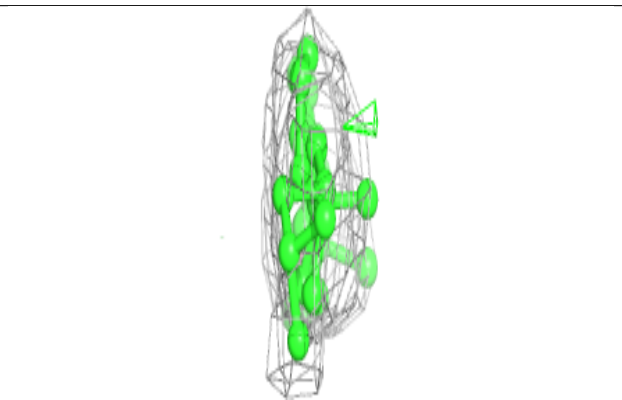
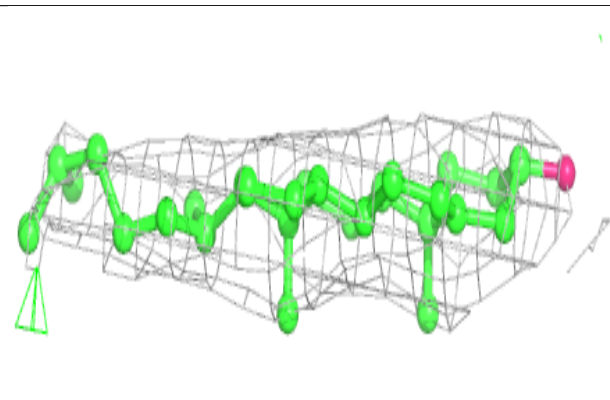
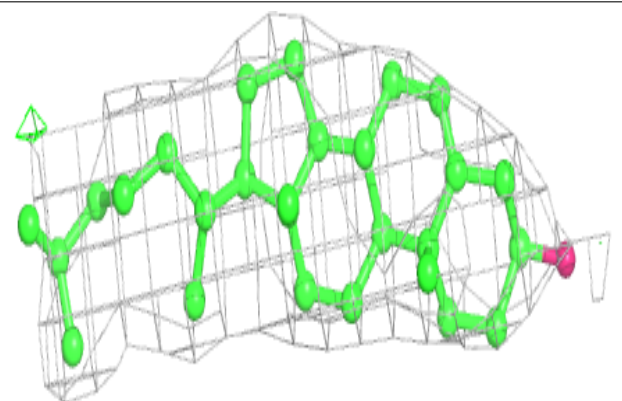


Electron density around OLC A 1216:

$2mF_o-DF_c$ (at 0.7 rmsd) in gray
 mF_o-DF_c (at 3 rmsd) in purple (negative)
and green (positive)

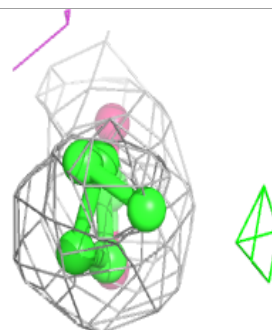
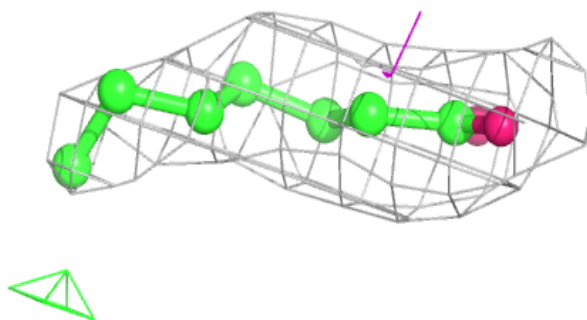
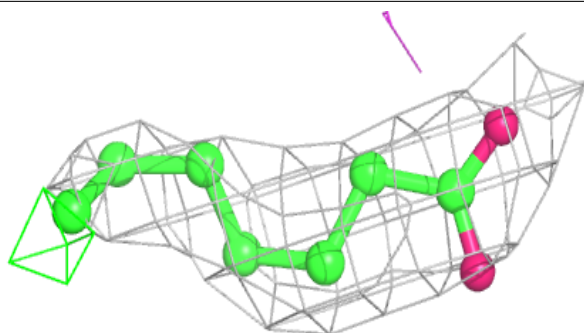
**Electron density around CLR A 1203:**

$2mF_o-DF_c$ (at 0.7 rmsd) in gray
 mF_o-DF_c (at 3 rmsd) in purple (negative)
and green (positive)

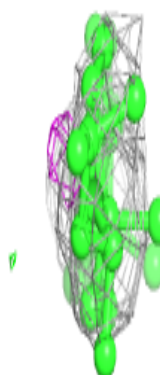
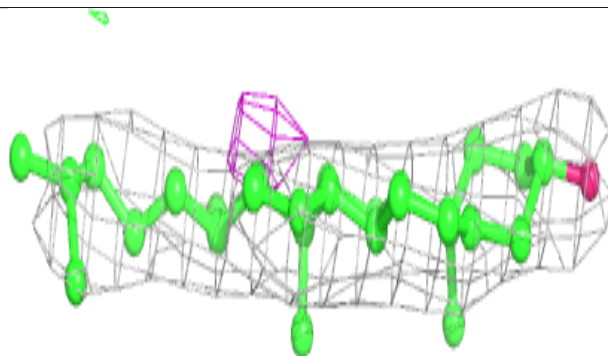
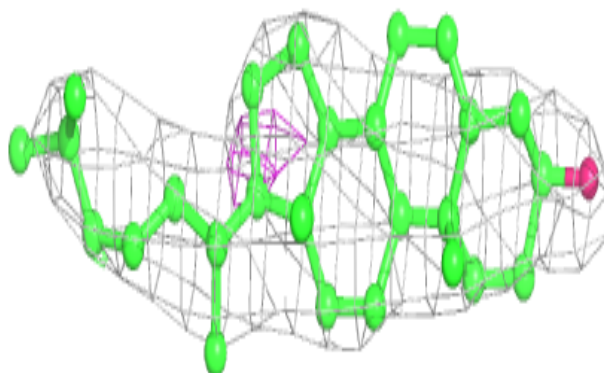


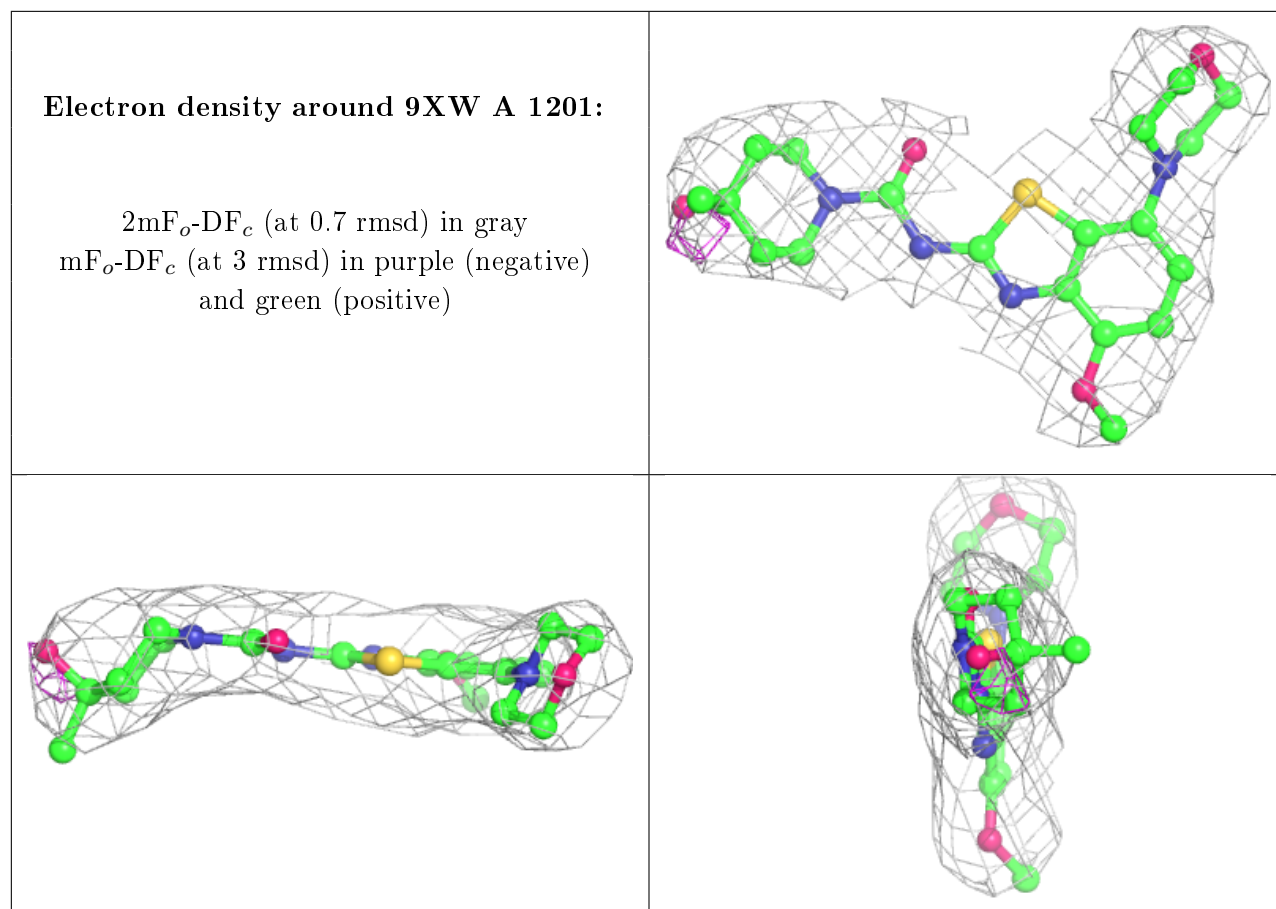
Electron density around OLA A 1214:

$2mF_o-DF_c$ (at 0.7 rmsd) in gray
 mF_o-DF_c (at 3 rmsd) in purple (negative)
and green (positive)

**Electron density around CLR A 1204:**

$2mF_o-DF_c$ (at 0.7 rmsd) in gray
 mF_o-DF_c (at 3 rmsd) in purple (negative)
and green (positive)





6.5 Other polymers [i](#)

There are no such residues in this entry.