



Full wwPDB X-ray Structure Validation Report ⓘ

May 15, 2020 – 06:03 pm BST

PDB ID : 4ON3
Title : Crystal structure of human sorting nexin 10 (SNX10)
Authors : Xu, T.; Xu, J.; Wang, Q.; Liu, J.
Deposited on : 2014-01-28
Resolution : 2.60 Å(reported)

This is a Full wwPDB X-ray Structure Validation Report for a publicly released PDB entry.

We welcome your comments at validation@mail.wwpdb.org

A user guide is available at

<https://www.wwpdb.org/validation/2017/XrayValidationReportHelp>

with specific help available everywhere you see the ⓘ symbol.

The following versions of software and data (see [references ⓘ](#)) were used in the production of this report:

MolProbity : 4.02b-467
Mogul : 1.8.5 (274361), CSD as541be (2020)
Xtriage (Phenix) : 1.13
EDS : 2.11
Percentile statistics : 20191225.v01 (using entries in the PDB archive December 25th 2019)
Refmac : 5.8.0158
CCP4 : 7.0.044 (Gargrove)
Ideal geometry (proteins) : Engh & Huber (2001)
Ideal geometry (DNA, RNA) : Parkinson et al. (1996)
Validation Pipeline (wwPDB-VP) : 2.11

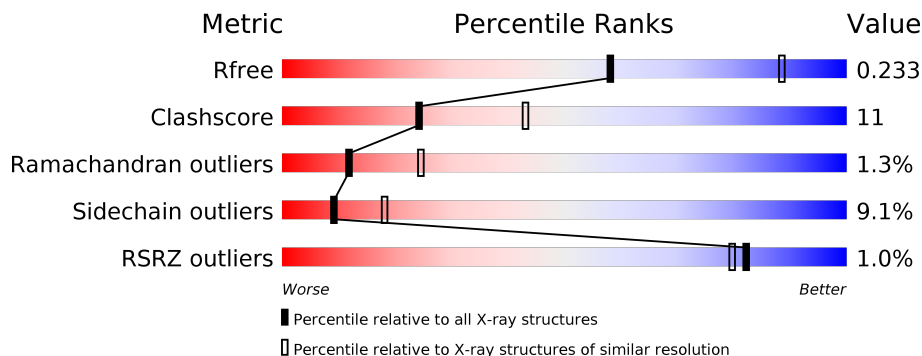
1 Overall quality at a glance

The following experimental techniques were used to determine the structure:

X-RAY DIFFRACTION

The reported resolution of this entry is 2.60 Å.

Percentile scores (ranging between 0-100) for global validation metrics of the entry are shown in the following graphic. The table shows the number of entries on which the scores are based.



Metric	Whole archive (#Entries)	Similar resolution (#Entries, resolution range(Å))
R_{free}	130704	3163 (2.60-2.60)
Clashscore	141614	3518 (2.60-2.60)
Ramachandran outliers	138981	3455 (2.60-2.60)
Sidechain outliers	138945	3455 (2.60-2.60)
RSRZ outliers	127900	3104 (2.60-2.60)

The table below summarises the geometric issues observed across the polymeric chains and their fit to the electron density. The red, orange, yellow and green segments on the lower bar indicate the fraction of residues that contain outliers for ≥ 3 , 2, 1 and 0 types of geometric quality criteria respectively. A grey segment represents the fraction of residues that are not modelled. The numeric value for each fraction is indicated below the corresponding segment, with a dot representing fractions $\leq 5\%$. The upper red bar (where present) indicates the fraction of residues that have poor fit to the electron density. The numeric value is given above the bar.

Mol	Chain	Length	Quality of chain
1	A	209	
1	B	209	

The following table lists non-polymeric compounds, carbohydrate monomers and non-standard residues in protein, DNA, RNA chains that are outliers for geometric or electron-density-fit criteria:

Mol	Type	Chain	Res	Chirality	Geometry	Clashes	Electron density
2	NO3	A	301	-	-	X	-

2 Entry composition i

There are 5 unique types of molecules in this entry. The entry contains 2715 atoms, of which 0 are hydrogens and 0 are deuteriums.

In the tables below, the ZeroOcc column contains the number of atoms modelled with zero occupancy, the AltConf column contains the number of residues with at least one atom in alternate conformation and the Trace column contains the number of residues modelled with at most 2 atoms.

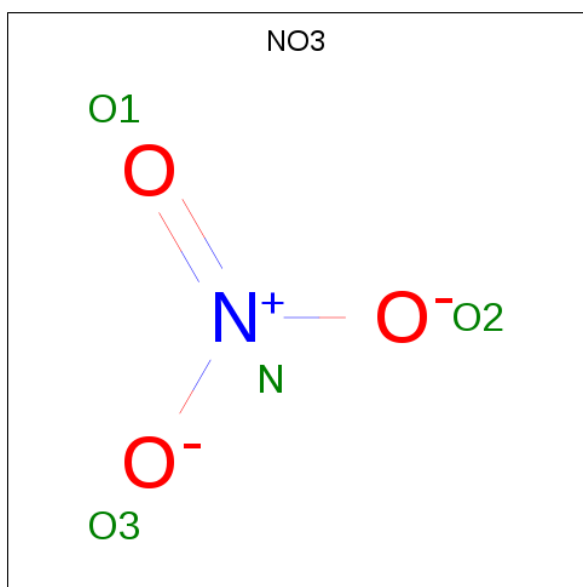
- Molecule 1 is a protein called Sorting nexin-10.

Mol	Chain	Residues	Atoms					ZeroOcc	AltConf	Trace
			Total	C	N	O	S			
1	A	150	1269	804	232	226	7	0	0	0
1	B	151	1278	809	233	229	7	0	0	0

There are 18 discrepancies between the modelled and reference sequences:

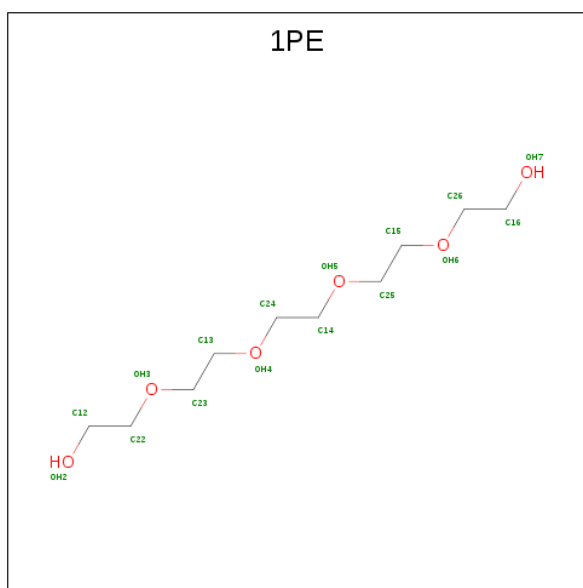
Chain	Residue	Modelled	Actual	Comment	Reference
A	42	ALA	CYS	ENGINEERED MUTATION	UNP Q9Y5X0
A	202	LEU	-	EXPRESSION TAG	UNP Q9Y5X0
A	203	GLU	-	EXPRESSION TAG	UNP Q9Y5X0
A	204	HIS	-	EXPRESSION TAG	UNP Q9Y5X0
A	205	HIS	-	EXPRESSION TAG	UNP Q9Y5X0
A	206	HIS	-	EXPRESSION TAG	UNP Q9Y5X0
A	207	HIS	-	EXPRESSION TAG	UNP Q9Y5X0
A	208	HIS	-	EXPRESSION TAG	UNP Q9Y5X0
A	209	HIS	-	EXPRESSION TAG	UNP Q9Y5X0
B	42	ALA	CYS	ENGINEERED MUTATION	UNP Q9Y5X0
B	202	LEU	-	EXPRESSION TAG	UNP Q9Y5X0
B	203	GLU	-	EXPRESSION TAG	UNP Q9Y5X0
B	204	HIS	-	EXPRESSION TAG	UNP Q9Y5X0
B	205	HIS	-	EXPRESSION TAG	UNP Q9Y5X0
B	206	HIS	-	EXPRESSION TAG	UNP Q9Y5X0
B	207	HIS	-	EXPRESSION TAG	UNP Q9Y5X0
B	208	HIS	-	EXPRESSION TAG	UNP Q9Y5X0
B	209	HIS	-	EXPRESSION TAG	UNP Q9Y5X0

- Molecule 2 is NITRATE ION (three-letter code: NO3) (formula: NO₃).



Mol	Chain	Residues	Atoms			ZeroOcc	AltConf
2	A	1	Total	N	O	0	0
			4	1	3		
2	A	1	Total	N	O	0	0
			4	1	3		
2	A	1	Total	N	O	0	0
			4	1	3		
2	A	1	Total	N	O	0	0
			4	1	3		
2	A	1	Total	N	O	0	0
			4	1	3		
2	A	1	Total	N	O	0	0
			4	1	3		
2	A	1	Total	N	O	0	0
			4	1	3		
2	B	1	Total	N	O	0	0
			4	1	3		
2	B	1	Total	N	O	0	0
			4	1	3		
2	B	1	Total	N	O	0	0
			4	1	3		
2	B	1	Total	N	O	0	0
			4	1	3		
2	B	1	Total	N	O	0	0
			4	1	3		

- Molecule 3 is PENTAETHYLENE GLYCOL (three-letter code: 1PE) (formula: C₁₀H₂₂O₆).



Mol	Chain	Residues	Atoms	ZeroOcc	AltConf
3	A	1	Total C O 13 8 5	0	0
3	A	1	Total C O 5 3 2	0	0
3	A	1	Total C O 5 3 2	0	0
3	A	1	Total C O 8 5 3	0	0
3	A	1	Total C O 10 6 4	0	0
3	A	1	Total C O 4 2 2	0	0
3	B	1	Total C O 14 9 5	0	0
3	B	1	Total C O 6 4 2	0	0
3	B	1	Total C O 7 4 3	0	0
3	B	1	Total C O 8 5 3	0	0

- Molecule 4 is SODIUM ION (three-letter code: NA) (formula: Na).

Mol	Chain	Residues	Atoms	ZeroOcc	AltConf
4	B	4	Total Na 4 4	0	0

Continued on next page...

Continued from previous page...

Mol	Chain	Residues	Atoms	ZeroOcc	AltConf
4	A	4	Total Na 4 4	0	0

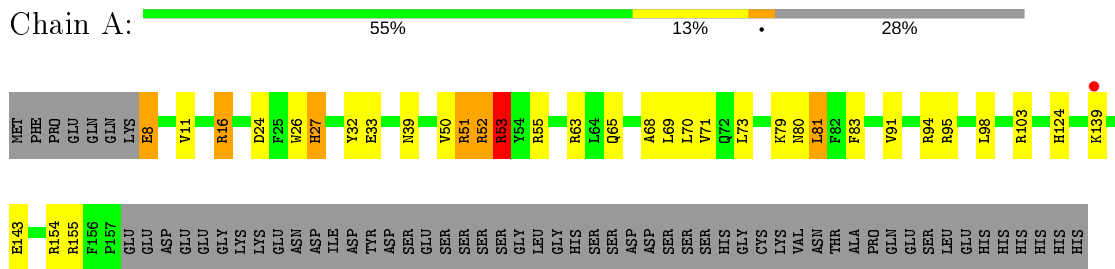
- Molecule 5 is water.

Mol	Chain	Residues	Atoms	ZeroOcc	AltConf
5	A	13	Total O 13 13	0	0
5	B	11	Total O 11 11	0	0

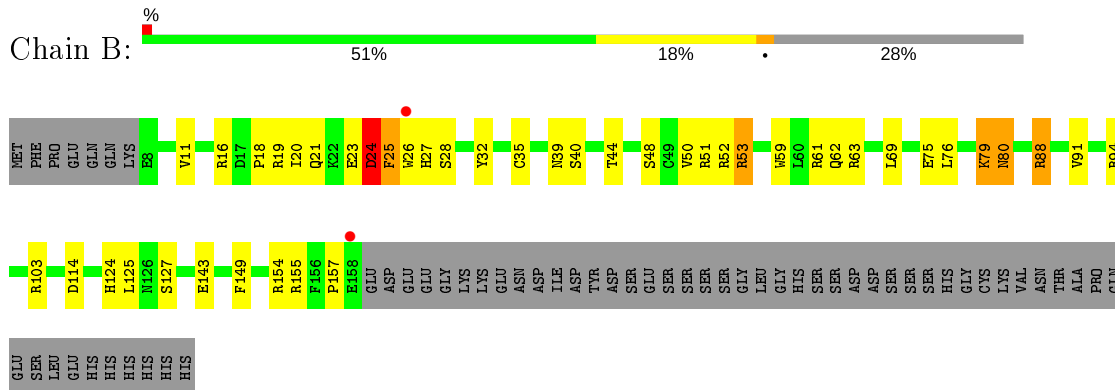
3 Residue-property plots [i](#)

These plots are drawn for all protein, RNA and DNA chains in the entry. The first graphic for a chain summarises the proportions of the various outlier classes displayed in the second graphic. The second graphic shows the sequence view annotated by issues in geometry and electron density. Residues are color-coded according to the number of geometric quality criteria for which they contain at least one outlier: green = 0, yellow = 1, orange = 2 and red = 3 or more. A red dot above a residue indicates a poor fit to the electron density ($RSRZ > 2$). Stretches of 2 or more consecutive residues without any outlier are shown as a green connector. Residues present in the sample, but not in the model, are shown in grey.

- Molecule 1: Sorting nexin-10



- Molecule 1: Sorting nexin-10



4 Data and refinement statistics

Property	Value	Source
Space group	P 32 2 1	Depositor
Cell constants a, b, c, α , β , γ	205.13Å 205.13Å 42.22Å 90.00° 90.00° 120.00°	Depositor
Resolution (Å)	67.14 – 2.60 67.14 – 2.55	Depositor EDS
% Data completeness (in resolution range)	78.2 (67.14-2.60) 97.8 (67.14-2.55)	Depositor EDS
R_{merge}	0.14	Depositor
R_{sym}	(Not available)	Depositor
$\langle I/\sigma(I) \rangle$ ¹	1.40 (at 2.55Å)	Xtrriage
Refinement program	REFMAC 5.8.0049	Depositor
R, R_{free}	0.189 , 0.229 0.201 , 0.233	Depositor DCC
R_{free} test set	1547 reflections (4.75%)	wwPDB-VP
Wilson B-factor (Å ²)	44.9	Xtrriage
Anisotropy	0.629	Xtrriage
Bulk solvent k_{sol} (e/Å ³), B_{sol} (Å ²)	0.41 , 38.8	EDS
L-test for twinning ²	$\langle L \rangle = 0.47$, $\langle L^2 \rangle = 0.30$	Xtrriage
Estimated twinning fraction	0.056 for -h,-k,l	Xtrriage
F_o, F_c correlation	0.94	EDS
Total number of atoms	2715	wwPDB-VP
Average B, all atoms (Å ²)	28.0	wwPDB-VP

Xtrriage's analysis on translational NCS is as follows: *The largest off-origin peak in the Patterson function is 4.52% of the height of the origin peak. No significant pseudotranslation is detected.*

¹Intensities estimated from amplitudes.

²Theoretical values of $\langle |L| \rangle$, $\langle L^2 \rangle$ for acentric reflections are 0.5, 0.333 respectively for untwinned datasets, and 0.375, 0.2 for perfectly twinned datasets.

5 Model quality i

5.1 Standard geometry i

Bond lengths and bond angles in the following residue types are not validated in this section: NA, 1PE, NO3

The Z score for a bond length (or angle) is the number of standard deviations the observed value is removed from the expected value. A bond length (or angle) with $|Z| > 5$ is considered an outlier worth inspection. RMSZ is the root-mean-square of all Z scores of the bond lengths (or angles).

Mol	Chain	Bond lengths		Bond angles	
		RMSZ	# Z >5	RMSZ	# Z >5
1	A	0.95	0/1298	1.05	5/1750 (0.3%)
1	B	0.92	1/1307 (0.1%)	1.08	7/1762 (0.4%)
All	All	0.94	1/2605 (0.0%)	1.07	12/3512 (0.3%)

Chiral center outliers are detected by calculating the chiral volume of a chiral center and verifying if the center is modelled as a planar moiety or with the opposite hand. A planarity outlier is detected by checking planarity of atoms in a peptide group, atoms in a mainchain group or atoms of a sidechain that are expected to be planar.

Mol	Chain	#Chirality outliers	#Planarity outliers
1	B	0	1

All (1) bond length outliers are listed below:

Mol	Chain	Res	Type	Atoms	Z	Observed(Å)	Ideal(Å)
1	B	59	TRP	CB-CG	-5.67	1.40	1.50

All (12) bond angle outliers are listed below:

Mol	Chain	Res	Type	Atoms	Z	Observed(°)	Ideal(°)
1	A	69	LEU	CA-CB-CG	8.16	134.08	115.30
1	A	52	ARG	NE-CZ-NH1	7.21	123.91	120.30
1	A	24	ASP	CB-CG-OD2	-7.00	112.00	118.30
1	B	114	ASP	CB-CG-OD2	-6.84	112.14	118.30
1	B	25	PHE	N-CA-C	6.60	128.83	111.00
1	A	53	ARG	NE-CZ-NH1	6.58	123.59	120.30
1	B	114	ASP	CB-CG-OD1	6.32	123.99	118.30
1	B	16	ARG	NE-CZ-NH1	6.09	123.34	120.30
1	B	19	ARG	NE-CZ-NH2	-5.62	117.49	120.30
1	B	88	ARG	NE-CZ-NH1	5.49	123.04	120.30

Continued on next page...

Continued from previous page...

Mol	Chain	Res	Type	Atoms	Z	Observed(°)	Ideal(°)
1	A	51	ARG	NE-CZ-NH2	5.29	122.94	120.30
1	B	16	ARG	NE-CZ-NH2	-5.05	117.77	120.30

There are no chirality outliers.

All (1) planarity outliers are listed below:

Mol	Chain	Res	Type	Group
1	B	24	ASP	Peptide

5.2 Too-close contacts [i](#)

In the following table, the Non-H and H(model) columns list the number of non-hydrogen atoms and hydrogen atoms in the chain respectively. The H(added) column lists the number of hydrogen atoms added and optimized by MolProbity. The Clashes column lists the number of clashes within the asymmetric unit, whereas Symm-Clashes lists symmetry related clashes.

Mol	Chain	Non-H	H(model)	H(added)	Clashes	Symm-Clashes
1	A	1269	0	1245	34	1
1	B	1278	0	1251	23	0
2	A	28	0	0	4	0
2	B	28	0	0	2	0
3	A	45	0	52	10	1
3	B	35	0	42	11	0
4	A	4	0	0	0	0
4	B	4	0	0	0	0
5	A	13	0	0	3	0
5	B	11	0	0	0	0
All	All	2715	0	2590	56	1

The all-atom clashscore is defined as the number of clashes found per 1000 atoms (including hydrogen atoms). The all-atom clashscore for this structure is 11.

All (56) close contacts within the same asymmetric unit are listed below, sorted by their clash magnitude.

Atom-1	Atom-2	Interatomic distance (Å)	Clash overlap (Å)
1:B:76:LEU:H	3:B:309:1PE:C13	1.86	0.87
1:A:80:ASN:N	3:A:313:1PE:H261	2.03	0.73
1:B:53:ARG:NH2	2:B:302:NO3:O2	2.19	0.72
1:A:80:ASN:H	3:A:313:1PE:H261	1.66	0.61

Continued on next page...

Continued from previous page...

Atom-1	Atom-2	Interatomic distance (Å)	Clash overlap (Å)
1:A:51:ARG:O	1:A:52:ARG:HG2	2.01	0.60
1:B:61:ARG:HD3	3:B:309:1PE:H222	1.82	0.60
1:B:124:HIS:CD2	1:B:124:HIS:H	2.20	0.59
1:A:80:ASN:OD1	1:A:94:ARG:NH2	2.37	0.58
1:A:124:HIS:HA	2:A:306:NO3:O3	2.05	0.57
1:A:32:TYR:O	1:A:51:ARG:HA	2.05	0.57
1:A:68:ALA:O	1:A:71:VAL:HG12	2.06	0.56
1:A:143:GLU:HG2	5:A:402:HOH:O	2.04	0.56
1:A:80:ASN:HB3	3:A:308:1PE:H142	1.87	0.55
1:A:39:ASN:HB2	3:B:308:1PE:H242	1.88	0.55
1:A:16:ARG:HD2	1:B:157:PRO:HG2	1.88	0.54
1:B:23:GLU:O	1:B:25:PHE:HB2	2.09	0.53
1:A:70:LEU:HB2	2:A:307:NO3:O3	2.09	0.52
1:B:143:GLU:HB3	3:B:308:1PE:H252	1.91	0.52
1:A:26:TRP:O	1:A:27:HIS:HB2	2.10	0.51
1:A:80:ASN:HB2	3:A:313:1PE:H262	1.93	0.51
1:A:80:ASN:HB2	3:A:313:1PE:C26	2.41	0.51
1:B:76:LEU:N	3:B:309:1PE:C13	2.66	0.50
1:A:139:LYS:HB2	5:A:405:HOH:O	2.10	0.50
1:B:21:GLN:O	1:B:28:SER:HB2	2.12	0.50
1:A:27:HIS:O	3:A:312:1PE:H132	2.12	0.49
1:A:53:ARG:HD3	2:A:301:NO3:O2	2.12	0.49
1:B:51:ARG:C	1:B:52:ARG:HG2	2.33	0.49
1:A:32:TYR:CE2	1:A:95:ARG:HB3	2.48	0.49
1:B:39:ASN:OD1	1:B:39:ASN:C	2.51	0.49
1:B:52:ARG:NH2	1:B:125:LEU:O	2.36	0.48
1:B:44:THR:HG23	3:B:308:1PE:C13	2.43	0.48
3:A:310:1PE:H131	1:B:154:ARG:HD3	1.96	0.48
1:A:51:ARG:C	1:A:52:ARG:HG2	2.35	0.47
1:A:80:ASN:O	3:A:308:1PE:H241	2.14	0.47
1:A:124:HIS:H	1:A:124:HIS:CD2	2.33	0.46
1:A:16:ARG:HD3	1:A:33:GLU:OE1	2.16	0.46
1:A:26:TRP:O	1:A:27:HIS:CB	2.64	0.45
1:B:35:CYS:HA	1:B:48:SER:O	2.16	0.45
1:B:80:ASN:HB3	2:B:307:NO3:O3	2.16	0.45
1:B:75:GLU:HA	3:B:309:1PE:C13	2.47	0.44
1:A:8:GLU:HA	1:A:8:GLU:OE2	2.18	0.43
1:A:94:ARG:O	1:A:98:LEU:HG	2.18	0.43
1:A:80:ASN:O	3:A:308:1PE:H131	2.18	0.43
1:B:23:GLU:O	1:B:24:ASP:C	2.55	0.43
1:B:44:THR:HG23	3:B:308:1PE:H132	2.02	0.42

Continued on next page...

Continued from previous page...

Atom-1	Atom-2	Interatomic distance (Å)	Clash overlap (Å)
1:B:143:GLU:HB3	3:B:308:1PE:H141	2.02	0.42
1:A:39:ASN:HB2	3:B:308:1PE:C24	2.48	0.42
1:B:50:VAL:HG12	1:B:149:PHE:CZ	2.55	0.42
1:A:80:ASN:ND2	2:A:301:NO3:O3	2.47	0.41
1:A:154:ARG:HD3	3:B:311:1PE:H122	2.02	0.41
1:A:103:ARG:NH1	5:A:409:HOH:O	2.53	0.41
1:A:39:ASN:OD1	1:A:39:ASN:C	2.57	0.41
1:B:18:PRO:HB3	1:B:32:TYR:CE2	2.56	0.41
1:A:79:LYS:H	3:A:309:1PE:C23	2.34	0.41
1:B:79:LYS:O	1:B:94:ARG:NH2	2.51	0.41
1:A:65:GLN:HB2	1:A:73:LEU:HD12	2.02	0.40

All (1) symmetry-related close contacts are listed below. The label for Atom-2 includes the symmetry operator and encoded unit-cell translations to be applied.

Atom-1	Atom-2	Interatomic distance (Å)	Clash overlap (Å)
1:A:83:PHE:O	3:A:308:1PE:OH4[5_555]	2.15	0.05

5.3 Torsion angles [i](#)

5.3.1 Protein backbone [i](#)

In the following table, the Percentiles column shows the percent Ramachandran outliers of the chain as a percentile score with respect to all X-ray entries followed by that with respect to entries of similar resolution.

The Analysed column shows the number of residues for which the backbone conformation was analysed, and the total number of residues.

Mol	Chain	Analysed	Favoured	Allowed	Outliers	Percentiles	
1	A	148/209 (71%)	139 (94%)	7 (5%)	2 (1%)	11	22
1	B	149/209 (71%)	142 (95%)	5 (3%)	2 (1%)	12	24
All	All	297/418 (71%)	281 (95%)	12 (4%)	4 (1%)	12	24

All (4) Ramachandran outliers are listed below:

Mol	Chain	Res	Type
1	A	27	HIS
1	B	24	ASP

Continued on next page...

Continued from previous page...

Mol	Chain	Res	Type
1	B	155	ARG
1	A	81	LEU

5.3.2 Protein sidechains [i](#)

In the following table, the Percentiles column shows the percent sidechain outliers of the chain as a percentile score with respect to all X-ray entries followed by that with respect to entries of similar resolution.

The Analysed column shows the number of residues for which the sidechain conformation was analysed, and the total number of residues.

Mol	Chain	Analysed	Rotameric	Outliers	Percentiles	
1	A	142/196 (72%)	132 (93%)	10 (7%)	15	30
1	B	143/196 (73%)	127 (89%)	16 (11%)	6	10
All	All	285/392 (73%)	259 (91%)	26 (9%)	9	18

All (26) residues with a non-rotameric sidechain are listed below:

Mol	Chain	Res	Type
1	A	8	GLU
1	A	11	VAL
1	A	16	ARG
1	A	50	VAL
1	A	53	ARG
1	A	55	ARG
1	A	63	ARG
1	A	81	LEU
1	A	91	VAL
1	A	155	ARG
1	B	11	VAL
1	B	20	ILE
1	B	24	ASP
1	B	26	TRP
1	B	27	HIS
1	B	40	SER
1	B	53	ARG
1	B	62	GLN
1	B	63	ARG
1	B	69	LEU
1	B	79	LYS

Continued on next page...

Continued from previous page...

Mol	Chain	Res	Type
1	B	80	ASN
1	B	88	ARG
1	B	91	VAL
1	B	103	ARG
1	B	127	SER

Some sidechains can be flipped to improve hydrogen bonding and reduce clashes. All (6) such sidechains are listed below:

Mol	Chain	Res	Type
1	A	65	GLN
1	A	124	HIS
1	B	62	GLN
1	B	86	ASN
1	B	124	HIS
1	B	153	ASN

5.3.3 RNA [i](#)

There are no RNA molecules in this entry.

5.4 Non-standard residues in protein, DNA, RNA chains [i](#)

There are no non-standard protein/DNA/RNA residues in this entry.

5.5 Carbohydrates [i](#)

There are no carbohydrates in this entry.

5.6 Ligand geometry [i](#)

Of 32 ligands modelled in this entry, 8 are monoatomic - leaving 24 for Mogul analysis.

In the following table, the Counts columns list the number of bonds (or angles) for which Mogul statistics could be retrieved, the number of bonds (or angles) that are observed in the model and the number of bonds (or angles) that are defined in the Chemical Component Dictionary. The Link column lists molecule types, if any, to which the group is linked. The Z score for a bond length (or angle) is the number of standard deviations the observed value is removed from the expected value. A bond length (or angle) with $|Z| > 2$ is considered an outlier worth inspection. RMSZ is the root-mean-square of all Z scores of the bond lengths (or angles).

Mol	Type	Chain	Res	Link	Bond lengths			Bond angles		
					Counts	RMSZ	# Z > 2	Counts	RMSZ	# Z > 2
2	NO3	A	307	-	1,3,3	0.06	0	0,3,3	0.00	-
3	1PE	A	312	-	9,9,15	0.79	0	8,8,14	1.01	1 (12%)
2	NO3	B	301	-	1,3,3	0.21	0	0,3,3	0.00	-
3	1PE	A	313	-	3,3,15	0.51	0	2,2,14	0.54	0
2	NO3	B	302	-	1,3,3	0.75	0	0,3,3	0.00	-
2	NO3	A	302	-	1,3,3	0.54	0	0,3,3	0.00	-
3	1PE	A	308	-	12,12,15	0.54	0	11,11,14	0.92	0
2	NO3	A	301	-	1,3,3	1.28	0	0,3,3	0.00	-
3	1PE	B	308	-	13,13,15	0.95	0	12,12,14	1.31	2 (16%)
3	1PE	B	311	-	7,7,15	1.23	0	6,6,14	1.23	0
3	1PE	A	311	-	7,7,15	0.79	0	6,6,14	0.65	0
2	NO3	A	304	-	1,3,3	0.29	0	0,3,3	0.00	-
3	1PE	A	309	-	4,4,15	0.84	0	3,3,14	0.37	0
2	NO3	A	303	-	1,3,3	0.16	0	0,3,3	0.00	-
2	NO3	B	306	-	1,3,3	0.55	0	0,3,3	0.00	-
2	NO3	B	304	-	1,3,3	0.35	0	0,3,3	0.00	-
3	1PE	B	310	-	6,6,15	0.74	0	5,5,14	0.55	0
2	NO3	A	306	-	1,3,3	0.09	0	0,3,3	0.00	-
3	1PE	B	309	-	5,5,15	0.81	0	4,4,14	0.84	0
2	NO3	B	307	-	1,3,3	0.29	0	0,3,3	0.00	-
2	NO3	A	305	-	1,3,3	0.21	0	0,3,3	0.00	-
2	NO3	B	303	-	1,3,3	0.10	0	0,3,3	0.00	-
3	1PE	A	310	-	4,4,15	0.90	0	3,3,14	0.79	0
2	NO3	B	305	-	1,3,3	0.00	0	0,3,3	0.00	-

In the following table, the Chirals column lists the number of chiral outliers, the number of chiral centers analysed, the number of these observed in the model and the number defined in the Chemical Component Dictionary. Similar counts are reported in the Torsion and Rings columns. '-' means no outliers of that kind were identified.

Mol	Type	Chain	Res	Link	Chirals	Torsions	Rings
3	1PE	B	310	-	-	3/4/4/13	-
3	1PE	A	312	-	-	5/7/7/13	-
3	1PE	B	308	-	-	9/11/11/13	-
3	1PE	A	313	-	-	1/1/1/13	-
3	1PE	A	309	-	-	0/2/2/13	-
3	1PE	B	309	-	-	2/3/3/13	-
3	1PE	A	308	-	-	9/10/10/13	-
3	1PE	A	310	-	-	2/2/2/13	-
3	1PE	B	311	-	-	4/5/5/13	-

Continued on next page...

Continued from previous page...

Mol	Type	Chain	Res	Link	Chirals	Torsions	Rings
3	1PE	A	311	-	-	5/5/5/13	-

There are no bond length outliers.

All (3) bond angle outliers are listed below:

Mol	Chain	Res	Type	Atoms	Z	Observed(°)	Ideal(°)
3	B	308	1PE	OH5-C25-C15	2.33	120.88	110.39
3	B	308	1PE	OH5-C14-C24	2.29	120.71	110.39
3	A	312	1PE	OH4-C13-C23	2.05	119.66	110.39

There are no chirality outliers.

All (40) torsion outliers are listed below:

Mol	Chain	Res	Type	Atoms
3	A	308	1PE	C12-C22-OH3-C23
3	B	308	1PE	OH4-C13-C23-OH3
3	A	312	1PE	OH2-C12-C22-OH3
3	A	308	1PE	OH2-C12-C22-OH3
3	A	308	1PE	OH6-C15-C25-OH5
3	B	308	1PE	OH7-C16-C26-OH6
3	B	311	1PE	OH2-C12-C22-OH3
3	A	311	1PE	OH5-C14-C24-OH4
3	A	308	1PE	OH4-C13-C23-OH3
3	B	308	1PE	OH5-C14-C24-OH4
3	A	312	1PE	C23-C13-OH4-C24
3	A	312	1PE	OH4-C13-C23-OH3
3	B	310	1PE	OH6-C15-C25-OH5
3	A	310	1PE	OH4-C13-C23-OH3
3	B	309	1PE	C13-C23-OH3-C22
3	B	308	1PE	OH6-C15-C25-OH5
3	A	312	1PE	OH5-C14-C24-OH4
3	A	313	1PE	OH7-C16-C26-OH6
3	A	308	1PE	C14-C24-OH4-C13
3	B	308	1PE	C13-C23-OH3-C22
3	A	308	1PE	C15-C25-OH5-C14
3	A	308	1PE	C13-C23-OH3-C22
3	B	311	1PE	C13-C23-OH3-C22
3	B	310	1PE	C25-C15-OH6-C26
3	A	311	1PE	C13-C23-OH3-C22
3	B	311	1PE	C23-C13-OH4-C24
3	B	308	1PE	C14-C24-OH4-C13

Continued on next page...

Continued from previous page...

Mol	Chain	Res	Type	Atoms
3	A	311	1PE	C14-C24-OH4-C13
3	A	308	1PE	C23-C13-OH4-C24
3	B	308	1PE	C25-C15-OH6-C26
3	A	310	1PE	C13-C23-OH3-C22
3	B	309	1PE	OH2-C12-C22-OH3
3	B	308	1PE	C23-C13-OH4-C24
3	A	312	1PE	C12-C22-OH3-C23
3	A	308	1PE	OH5-C14-C24-OH4
3	B	308	1PE	C24-C14-OH5-C25
3	A	311	1PE	C23-C13-OH4-C24
3	B	310	1PE	OH7-C16-C26-OH6
3	A	311	1PE	OH4-C13-C23-OH3
3	B	311	1PE	OH4-C13-C23-OH3

There are no ring outliers.

13 monomers are involved in 28 short contacts:

Mol	Chain	Res	Type	Clashes	Symm-Clashes
2	A	307	NO3	1	0
3	A	312	1PE	1	0
3	A	313	1PE	4	0
2	B	302	NO3	1	0
3	A	308	1PE	3	1
2	A	301	NO3	2	0
3	B	308	1PE	6	0
3	B	311	1PE	1	0
3	A	309	1PE	1	0
2	A	306	NO3	1	0
3	B	309	1PE	4	0
2	B	307	NO3	1	0
3	A	310	1PE	1	0

5.7 Other polymers [i](#)

There are no such residues in this entry.

5.8 Polymer linkage issues [i](#)

There are no chain breaks in this entry.

6 Fit of model and data [i](#)

6.1 Protein, DNA and RNA chains [i](#)

In the following table, the column labelled '#RSRZ > 2' contains the number (and percentage) of RSRZ outliers, followed by percent RSRZ outliers for the chain as percentile scores relative to all X-ray entries and entries of similar resolution. The OWAB column contains the minimum, median, 95th percentile and maximum values of the occupancy-weighted average B-factor per residue. The column labelled 'Q < 0.9' lists the number of (and percentage) of residues with an average occupancy less than 0.9.

Mol	Chain	Analysed	<RSRZ>	#RSRZ>2	OWAB(Å ²)	Q<0.9
1	A	150/209 (71%)	-0.12	1 (0%) 87 86	10, 22, 48, 70	0
1	B	151/209 (72%)	0.04	2 (1%) 77 73	8, 22, 71, 116	0
All	All	301/418 (72%)	-0.04	3 (0%) 82 80	8, 22, 57, 116	0

All (3) RSRZ outliers are listed below:

Mol	Chain	Res	Type	RSRZ
1	B	26	TRP	3.3
1	B	158	GLU	2.9
1	A	139	LYS	2.4

6.2 Non-standard residues in protein, DNA, RNA chains [i](#)

There are no non-standard protein/DNA/RNA residues in this entry.

6.3 Carbohydrates [i](#)

There are no carbohydrates in this entry.

6.4 Ligands [i](#)

In the following table, the Atoms column lists the number of modelled atoms in the group and the number defined in the chemical component dictionary. The B-factors column lists the minimum, median, 95th percentile and maximum values of B factors of atoms in the group. The column labelled 'Q < 0.9' lists the number of atoms with occupancy less than 0.9.

Mol	Type	Chain	Res	Atoms	RSCC	RSR	B-factors(Å ²)	Q<0.9
2	NO3	B	305	4/4	0.71	0.27	59,62,70,72	0
2	NO3	A	305	4/4	0.76	0.37	48,53,55,61	0

Continued on next page...

Continued from previous page...

Mol	Type	Chain	Res	Atoms	RSCC	RSR	B-factors(\AA^2)	Q<0.9
3	1PE	B	310	7/16	0.76	0.26	43,51,59,66	0
3	1PE	A	312	10/16	0.77	0.32	58,63,69,69	0
3	1PE	B	308	14/16	0.79	0.36	39,64,79,82	0
2	NO3	A	306	4/4	0.81	0.45	44,53,58,60	0
3	1PE	B	311	8/16	0.82	0.37	35,43,55,56	0
2	NO3	A	304	4/4	0.84	0.29	34,38,43,50	0
3	1PE	A	311	8/16	0.85	0.26	38,59,70,71	0
2	NO3	A	303	4/4	0.89	0.24	30,34,35,36	0
3	1PE	B	309	6/16	0.89	0.28	34,41,45,49	0
4	NA	A	316	1/1	0.89	0.10	21,21,21,21	0
4	NA	B	314	1/1	0.89	0.36	25,25,25,25	0
4	NA	B	315	1/1	0.90	0.09	25,25,25,25	0
4	NA	A	314	1/1	0.91	0.10	17,17,17,17	1
2	NO3	A	307	4/4	0.93	0.34	36,38,41,43	0
2	NO3	B	304	4/4	0.93	0.21	34,35,36,41	0
2	NO3	A	301	4/4	0.94	0.21	21,23,27,33	0
2	NO3	B	306	4/4	0.95	0.36	37,47,48,49	0
3	1PE	A	309	5/16	0.95	0.22	35,36,38,39	0
4	NA	A	317	1/1	0.95	0.56	25,25,25,25	0
2	NO3	B	303	4/4	0.95	0.23	35,36,37,38	0
3	1PE	A	310	5/16	0.95	0.20	34,36,38,39	0
3	1PE	A	308	13/16	0.95	0.29	20,24,26,30	11
3	1PE	A	313	4/16	0.96	0.22	34,36,38,40	0
2	NO3	B	307	4/4	0.97	0.16	23,24,25,26	0
4	NA	A	315	1/1	0.97	0.44	23,23,23,23	0
4	NA	B	312	1/1	0.97	0.14	14,14,14,14	0
2	NO3	B	302	4/4	0.97	0.28	28,28,29,30	0
2	NO3	A	302	4/4	0.97	0.26	35,35,37,37	4
2	NO3	B	301	4/4	0.97	0.15	8,8,8,8	0
4	NA	B	313	1/1	0.98	0.43	19,19,19,19	0

6.5 Other polymers [i](#)

There are no such residues in this entry.