



# wwPDB X-ray Structure Validation Summary Report ⓘ

Feb 21, 2024 – 03:32 AM EST

PDB ID : 4OSG  
Title : Klebsiella pneumoniae complexed with NADPH and 6-ethyl-5-[(3R)-3-[3-methoxyl-5-(pyridine-4-yl)phenyl]but-1-yn-1-yl]pyrimidine-2,4-diamine (UCP1006)  
Authors : Lamb, K.M.; Anderson, A.C.  
Deposited on : 2014-02-12  
Resolution : 2.70 Å (reported)

This is a wwPDB X-ray Structure Validation Summary Report for a publicly released PDB entry.

We welcome your comments at [validation@mail.wwpdb.org](mailto:validation@mail.wwpdb.org)

A user guide is available at

<https://www.wwpdb.org/validation/2017/XrayValidationReportHelp>

with specific help available everywhere you see the ⓘ symbol.

The types of validation reports are described at

<http://www.wwpdb.org/validation/2017/FAQs#types>.

---

The following versions of software and data (see [references ⓘ](#)) were used in the production of this report:

MolProbity : 4.02b-467  
Mogul : 1.8.5 (274361), CSD as541be (2020)  
Xtriage (Phenix) : 1.13  
EDS : 2.36  
buster-report : 1.1.7 (2018)  
Percentile statistics : 20191225.v01 (using entries in the PDB archive December 25th 2019)  
Refmac : 5.8.0158  
CCP4 : 7.0.044 (Gargrove)  
Ideal geometry (proteins) : Engh & Huber (2001)  
Ideal geometry (DNA, RNA) : Parkinson et al. (1996)  
Validation Pipeline (wwPDB-VP) : 2.36

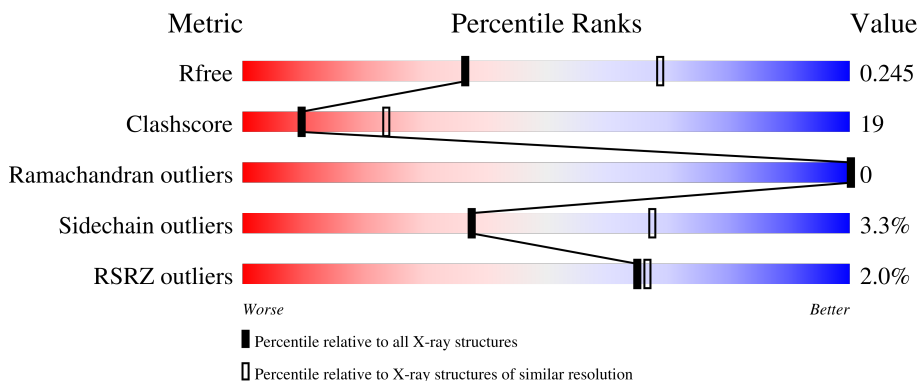
# 1 Overall quality at a glance

The following experimental techniques were used to determine the structure:

*X-RAY DIFFRACTION*

The reported resolution of this entry is 2.70 Å.

Percentile scores (ranging between 0-100) for global validation metrics of the entry are shown in the following graphic. The table shows the number of entries on which the scores are based.



Metric	Whole archive (#Entries)	Similar resolution (#Entries, resolution range(Å))
$R_{free}$	130704	2808 (2.70-2.70)
Clashscore	141614	3122 (2.70-2.70)
Ramachandran outliers	138981	3069 (2.70-2.70)
Sidechain outliers	138945	3069 (2.70-2.70)
RSRZ outliers	127900	2737 (2.70-2.70)

The table below summarises the geometric issues observed across the polymeric chains and their fit to the electron density. The red, orange, yellow and green segments of the lower bar indicate the fraction of residues that contain outliers for  $\geq 3$ , 2, 1 and 0 types of geometric quality criteria respectively. A grey segment represents the fraction of residues that are not modelled. The numeric value for each fraction is indicated below the corresponding segment, with a dot representing fractions  $\leq 5\%$ . The upper red bar (where present) indicates the fraction of residues that have poor fit to the electron density. The numeric value is given above the bar.

Mol	Chain	Length	Quality of chain
1	A	165	
1	B	165	
1	C	165	
1	D	165	

The following table lists non-polymeric compounds, carbohydrate monomers and non-standard

residues in protein, DNA, RNA chains that are outliers for geometric or electron-density-fit criteria:

<b>Mol</b>	<b>Type</b>	<b>Chain</b>	<b>Res</b>	<b>Chirality</b>	<b>Geometry</b>	<b>Clashes</b>	<b>Electron density</b>
3	06U	C	402	-	-	X	-

## 2 Entry composition

There are 9 unique types of molecules in this entry. The entry contains 5399 atoms, of which 0 are hydrogens and 0 are deuteriums.

In the tables below, the ZeroOcc column contains the number of atoms modelled with zero occupancy, the AltConf column contains the number of residues with at least one atom in alternate conformation and the Trace column contains the number of residues modelled with at most 2 atoms.

- Molecule 1 is a protein called Dihydrofolate reductase.

Mol	Chain	Residues	Atoms					ZeroOcc	AltConf	Trace
			Total	C	N	O	S			
1	A	159	1264	802	215	240	7	0	0	0
1	B	159	1264	802	215	240	7	0	0	0
1	C	159	1264	802	215	240	7	0	0	0
1	D	159	1264	802	215	240	7	0	0	0

There are 24 discrepancies between the modelled and reference sequences:

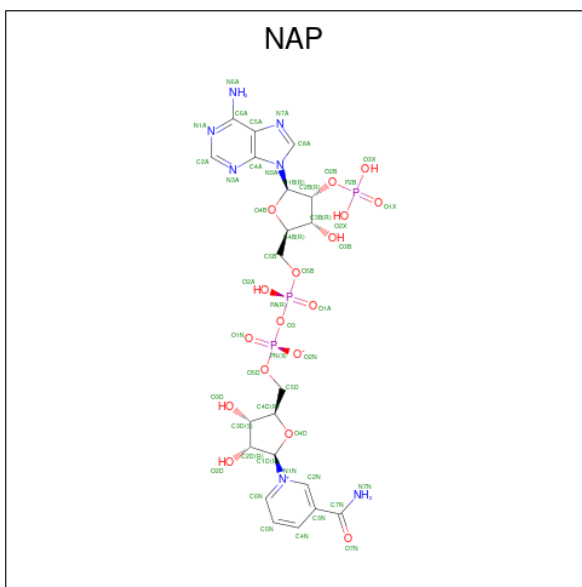
Chain	Residue	Modelled	Actual	Comment	Reference
A	160	HIS	-	expression tag	UNP U5M636
A	161	HIS	-	expression tag	UNP U5M636
A	162	HIS	-	expression tag	UNP U5M636
A	163	HIS	-	expression tag	UNP U5M636
A	164	HIS	-	expression tag	UNP U5M636
A	165	HIS	-	expression tag	UNP U5M636
B	160	HIS	-	expression tag	UNP U5M636
B	161	HIS	-	expression tag	UNP U5M636
B	162	HIS	-	expression tag	UNP U5M636
B	163	HIS	-	expression tag	UNP U5M636
B	164	HIS	-	expression tag	UNP U5M636
B	165	HIS	-	expression tag	UNP U5M636
C	160	HIS	-	expression tag	UNP U5M636
C	161	HIS	-	expression tag	UNP U5M636
C	162	HIS	-	expression tag	UNP U5M636
C	163	HIS	-	expression tag	UNP U5M636
C	164	HIS	-	expression tag	UNP U5M636
C	165	HIS	-	expression tag	UNP U5M636
D	160	HIS	-	expression tag	UNP U5M636
D	161	HIS	-	expression tag	UNP U5M636
D	162	HIS	-	expression tag	UNP U5M636

*Continued on next page...*

Continued from previous page...

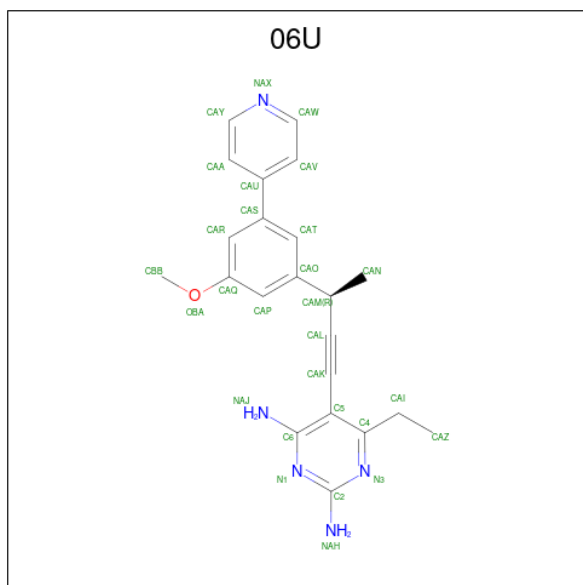
Chain	Residue	Modelled	Actual	Comment	Reference
D	163	HIS	-	expression tag	UNP U5M636
D	164	HIS	-	expression tag	UNP U5M636
D	165	HIS	-	expression tag	UNP U5M636

- Molecule 2 is NADP NICOTINAMIDE-ADENINE-DINUCLEOTIDE PHOSPHATE (three-letter code: NAP) (formula: C<sub>21</sub>H<sub>28</sub>N<sub>7</sub>O<sub>17</sub>P<sub>3</sub>).



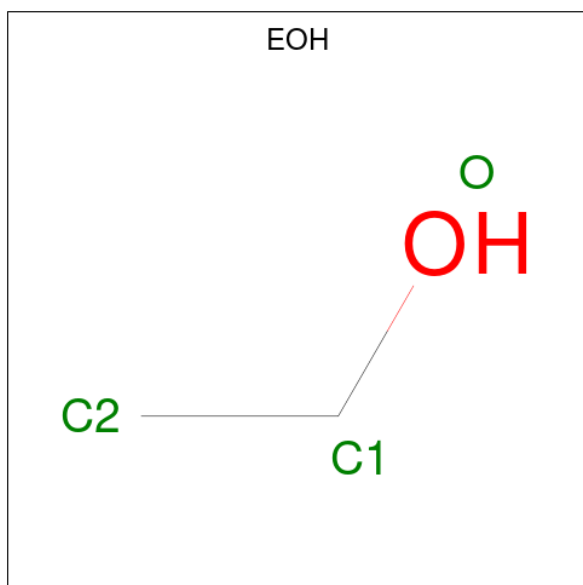
Mol	Chain	Residues	Atoms					ZeroOcc	AltConf
			Total	C	N	O	P		
2	A	1	Total	C	N	O	P	0	0
			48	21	7	17	3		
2	B	1	Total	C	N	O	P	0	0
			48	21	7	17	3		
2	C	1	Total	C	N	O	P	0	0
			48	21	7	17	3		
2	D	1	Total	C	N	O	P	0	0
			48	21	7	17	3		

- Molecule 3 is 6-ethyl-5-[(3R)-3-[3-methoxy-5-(pyridin-4-yl)phenyl]but-1-yn-1-yl]pyrimidine-2,4-diamine (three-letter code: 06U) (formula: C<sub>22</sub>H<sub>23</sub>N<sub>5</sub>O).



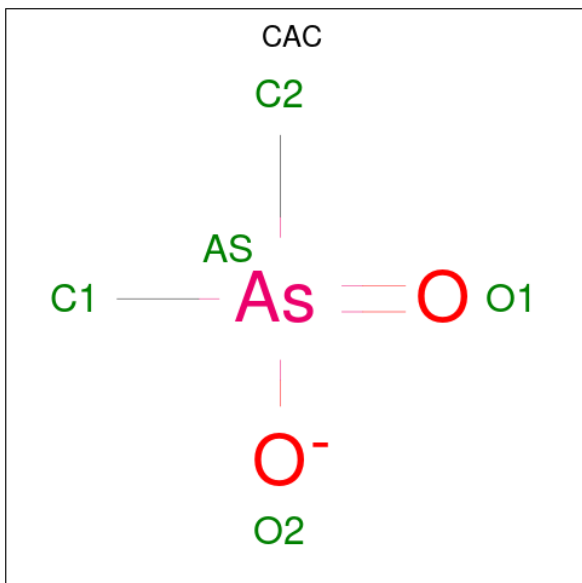
Mol	Chain	Residues	Atoms				ZeroOcc	AltConf
			Total	C	N	O		
3	A	1	28	22	5	1	0	0
3	B	1	28	22	5	1	0	0
3	C	1	28	22	5	1	0	0
3	D	1	28	22	5	1	0	0

- Molecule 4 is ETHANOL (three-letter code: EOH) (formula: C<sub>2</sub>H<sub>6</sub>O).



Mol	Chain	Residues	Atoms			ZeroOcc	AltConf
4	A	1	Total	C	O	0	0
			3	2	1		

- Molecule 5 is CACODYLATE ION (three-letter code: CAC) (formula:  $C_2H_6AsO_2$ ).



Mol	Chain	Residues	Atoms				ZeroOcc	AltConf
5	B	1	Total	As	C	O	0	0
			5	1	2	2		
5	D	1	Total	As	C	O	0	0
			5	1	2	2		

- Molecule 6 is CHLORIDE ION (three-letter code: CL) (formula: Cl).

Mol	Chain	Residues	Atoms		ZeroOcc	AltConf
6	B	1	Total	Cl	0	0
			1	1		
6	C	2	Total	Cl	0	0
			2	2		
6	D	1	Total	Cl	0	0
			1	1		

- Molecule 7 is DI(HYDROXYETHYL)ETHER (three-letter code: PEG) (formula:  $C_4H_{10}O_3$ ).



Mol	Chain	Residues	Atoms	ZeroOcc	AltConf
7	C	1	Total C O 7 4 3	0	0

- Molecule 8 is CALCIUM ION (three-letter code: CA) (formula: Ca).

Mol	Chain	Residues	Atoms	ZeroOcc	AltConf
8	C	1	Total Ca 1 1	0	0
8	D	1	Total Ca 1 1	0	0

- Molecule 9 is water.

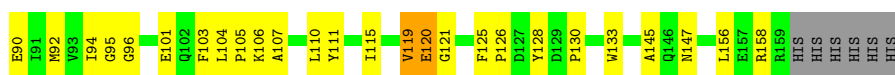
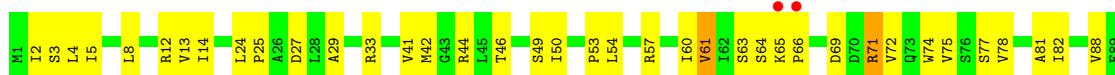
Mol	Chain	Residues	Atoms	ZeroOcc	AltConf
9	A	5	Total O 5 5	0	0
9	B	1	Total O 1 1	0	0
9	C	3	Total O 3 3	0	0
9	D	4	Total O 4 4	0	0



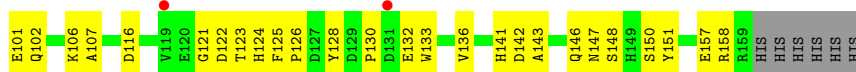
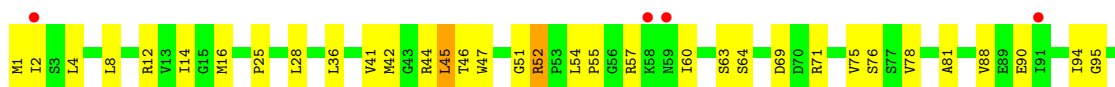
### 3 Residue-property plots [i](#)

These plots are drawn for all protein, RNA, DNA and oligosaccharide chains in the entry. The first graphic for a chain summarises the proportions of the various outlier classes displayed in the second graphic. The second graphic shows the sequence view annotated by issues in geometry and electron density. Residues are color-coded according to the number of geometric quality criteria for which they contain at least one outlier: green = 0, yellow = 1, orange = 2 and red = 3 or more. A red dot above a residue indicates a poor fit to the electron density ( $RSRZ > 2$ ). Stretches of 2 or more consecutive residues without any outlier are shown as a green connector. Residues present in the sample, but not in the model, are shown in grey.

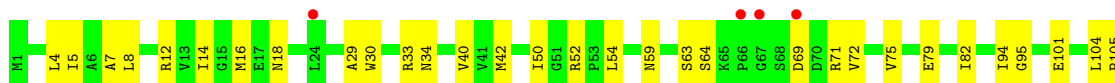
- Molecule 1: Dihydrofolate reductase



- Molecule 1: Dihydrofolate reductase

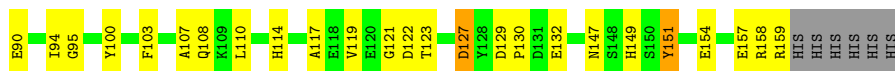


- Molecule 1: Dihydrofolate reductase



- Molecule 1: Dihydrofolate reductase





## 4 Data and refinement statistics

Property	Value	Source
Space group	P 1	Depositor
Cell constants a, b, c, $\alpha$ , $\beta$ , $\gamma$	36.12Å 74.21Å 82.53Å 67.94° 77.70° 75.92°	Depositor
Resolution (Å)	39.27 – 2.70 39.27 – 2.70	Depositor EDS
% Data completeness (in resolution range)	94.2 (39.27-2.70) 92.8 (39.27-2.70)	Depositor EDS
$R_{merge}$	0.05	Depositor
$R_{sym}$	0.07	Depositor
$\langle I/\sigma(I) \rangle$ <sup>1</sup>	1.95 (at 2.69Å)	Xtrriage
Refinement program	PHENIX (phenix.refine: 1.8.2_1309)	Depositor
R, $R_{free}$	0.239 , 0.248 0.232 , 0.245	Depositor DCC
$R_{free}$ test set	1982 reflections (10.03%)	wwPDB-VP
Wilson B-factor (Å <sup>2</sup> )	71.8	Xtrriage
Anisotropy	0.728	Xtrriage
Bulk solvent $k_{sol}$ (e/Å <sup>3</sup> ), $B_{sol}$ (Å <sup>2</sup> )	0.30 , 50.5	EDS
L-test for twinning <sup>2</sup>	$\langle  L  \rangle = 0.52$ , $\langle L^2 \rangle = 0.36$	Xtrriage
Estimated twinning fraction	0.448 for h,h-k,h-l	Xtrriage
$F_o, F_c$ correlation	0.95	EDS
Total number of atoms	5399	wwPDB-VP
Average B, all atoms (Å <sup>2</sup> )	87.0	wwPDB-VP

Xtrriage's analysis on translational NCS is as follows: *The largest off-origin peak in the Patterson function is 7.69% of the height of the origin peak. No significant pseudotranslation is detected.*

<sup>1</sup>Intensities estimated from amplitudes.

<sup>2</sup>Theoretical values of  $\langle |L| \rangle$ ,  $\langle L^2 \rangle$  for acentric reflections are 0.5, 0.333 respectively for untwinned datasets, and 0.375, 0.2 for perfectly twinned datasets.

## 5 Model quality [i](#)

### 5.1 Standard geometry [i](#)

Bond lengths and bond angles in the following residue types are not validated in this section: EOH, CA, 06U, CAC, PEG, NAP, CL

The Z score for a bond length (or angle) is the number of standard deviations the observed value is removed from the expected value. A bond length (or angle) with  $|Z| > 5$  is considered an outlier worth inspection. RMSZ is the root-mean-square of all Z scores of the bond lengths (or angles).

Mol	Chain	Bond lengths		Bond angles	
		RMSZ	# Z  >5	RMSZ	# Z  >5
1	A	0.37	0/1296	0.58	0/1761
1	B	0.30	0/1296	0.56	0/1761
1	C	0.31	0/1296	0.56	0/1761
1	D	0.39	1/1296 (0.1%)	0.60	0/1761
All	All	0.34	1/5184 (0.0%)	0.57	0/7044

All (1) bond length outliers are listed below:

Mol	Chain	Res	Type	Atoms	Z	Observed(Å)	Ideal(Å)
1	D	59	ASN	C-N	-7.11	1.17	1.34

There are no bond angle outliers.

There are no chirality outliers.

There are no planarity outliers.

### 5.2 Too-close contacts [i](#)

In the following table, the Non-H and H(model) columns list the number of non-hydrogen atoms and hydrogen atoms in the chain respectively. The H(added) column lists the number of hydrogen atoms added and optimized by MolProbity. The Clashes column lists the number of clashes within the asymmetric unit, whereas Symm-Clashes lists symmetry-related clashes.

Mol	Chain	Non-H	H(model)	H(added)	Clashes	Symm-Clashes
1	A	1264	0	1220	54	0
1	B	1264	0	1220	48	0
1	C	1264	0	1220	34	0
1	D	1264	0	1219	56	0
2	A	48	0	25	7	0
2	B	48	0	25	13	0

*Continued on next page...*

*Continued from previous page...*

Mol	Chain	Non-H	H(model)	H(added)	Clashes	Symm-Clashes
2	C	48	0	25	3	0
2	D	48	0	25	8	0
3	A	28	0	23	8	0
3	B	28	0	23	5	0
3	C	28	0	23	9	0
3	D	28	0	23	5	0
4	A	3	0	6	0	0
5	B	5	0	0	0	0
5	D	5	0	0	0	0
6	B	1	0	0	0	0
6	C	2	0	0	0	0
6	D	1	0	0	0	0
7	C	7	0	10	0	0
8	C	1	0	0	0	0
8	D	1	0	0	0	0
9	A	5	0	0	0	0
9	B	1	0	0	0	0
9	C	3	0	0	0	0
9	D	4	0	0	0	0
All	All	5399	0	5087	202	0

The all-atom clashscore is defined as the number of clashes found per 1000 atoms (including hydrogen atoms). The all-atom clashscore for this structure is 19.

The worst 5 of 202 close contacts within the same asymmetric unit are listed below, sorted by their clash magnitude.

Atom-1	Atom-2	Interatomic distance (Å)	Clash overlap (Å)
1:B:45:LEU:HD21	2:B:401:NAP:O5B	1.31	1.27
1:B:45:LEU:HD21	2:B:401:NAP:PA	1.92	1.09
1:C:50:ILE:HG22	1:C:52:ARG:H	1.34	0.91
1:D:65:LYS:HE2	1:D:66:PRO:HD2	1.52	0.90
1:C:54:LEU:H	1:C:59:ASN:HD21	1.19	0.87

There are no symmetry-related clashes.

## 5.3 Torsion angles [i](#)

### 5.3.1 Protein backbone [i](#)

In the following table, the Percentiles column shows the percent Ramachandran outliers of the chain as a percentile score with respect to all X-ray entries followed by that with respect to entries of similar resolution.

The Analysed column shows the number of residues for which the backbone conformation was analysed, and the total number of residues.

Mol	Chain	Analysed	Favoured	Allowed	Outliers	Percentiles	
1	A	157/165 (95%)	153 (98%)	4 (2%)	0	100	100
1	B	157/165 (95%)	155 (99%)	2 (1%)	0	100	100
1	C	157/165 (95%)	155 (99%)	2 (1%)	0	100	100
1	D	157/165 (95%)	155 (99%)	2 (1%)	0	100	100
All	All	628/660 (95%)	618 (98%)	10 (2%)	0	100	100

There are no Ramachandran outliers to report.

### 5.3.2 Protein sidechains [i](#)

In the following table, the Percentiles column shows the percent sidechain outliers of the chain as a percentile score with respect to all X-ray entries followed by that with respect to entries of similar resolution.

The Analysed column shows the number of residues for which the sidechain conformation was analysed, and the total number of residues.

Mol	Chain	Analysed	Rotameric	Outliers	Percentiles	
1	A	136/142 (96%)	132 (97%)	4 (3%)	42	71
1	B	136/142 (96%)	131 (96%)	5 (4%)	34	63
1	C	136/142 (96%)	133 (98%)	3 (2%)	52	79
1	D	136/142 (96%)	130 (96%)	6 (4%)	28	56
All	All	544/568 (96%)	526 (97%)	18 (3%)	38	67

5 of 18 residues with a non-rotameric sidechain are listed below:

Mol	Chain	Res	Type
1	D	59	ASN
1	D	151	TYR
1	D	127	ASP

*Continued on next page...*

*Continued from previous page...*

Mol	Chain	Res	Type
1	B	158	ARG
1	D	46	THR

Sometimes sidechains can be flipped to improve hydrogen bonding and reduce clashes. All (2) such sidechains are listed below:

Mol	Chain	Res	Type
1	C	59	ASN
1	C	147	ASN

### 5.3.3 RNA [i](#)

There are no RNA molecules in this entry.

## 5.4 Non-standard residues in protein, DNA, RNA chains [i](#)

There are no non-standard protein/DNA/RNA residues in this entry.

## 5.5 Carbohydrates [i](#)

There are no monosaccharides in this entry.

## 5.6 Ligand geometry [i](#)

Of 18 ligands modelled in this entry, 6 are monoatomic - leaving 12 for Mogul analysis.

In the following table, the Counts columns list the number of bonds (or angles) for which Mogul statistics could be retrieved, the number of bonds (or angles) that are observed in the model and the number of bonds (or angles) that are defined in the Chemical Component Dictionary. The Link column lists molecule types, if any, to which the group is linked. The Z score for a bond length (or angle) is the number of standard deviations the observed value is removed from the expected value. A bond length (or angle) with  $|Z| > 2$  is considered an outlier worth inspection. RMSZ is the root-mean-square of all Z scores of the bond lengths (or angles).

Mol	Type	Chain	Res	Link	Bond lengths			Bond angles		
					Counts	RMSZ	$\# Z  > 2$	Counts	RMSZ	$\# Z  > 2$
3	06U	D	402	-	28,30,30	3.78	8 (28%)	32,41,41	2.11	9 (28%)
2	NAP	C	401	-	45,52,52	1.72	4 (8%)	56,80,80	1.27	5 (8%)
5	CAC	B	403	-	0,4,4	-	-	0,6,6	-	-
7	PEG	C	403	-	6,6,6	0.59	0	5,5,5	0.37	0

Mol	Type	Chain	Res	Link	Bond lengths			Bond angles		
					Counts	RMSZ	# Z  > 2	Counts	RMSZ	# Z  > 2
5	CAC	D	405	-	0,4,4	-	-	0,6,6	-	-
3	06U	B	402	-	28,30,30	3.05	7 (25%)	32,41,41	2.21	10 (31%)
3	06U	C	402	-	28,30,30	4.12	8 (28%)	32,41,41	2.25	10 (31%)
4	EOH	A	403	-	2,2,2	0.38	0	1,1,1	0.36	0
3	06U	A	402	-	28,30,30	2.97	7 (25%)	32,41,41	2.22	10 (31%)
2	NAP	D	401	-	45,52,52	1.71	3 (6%)	56,80,80	1.05	1 (1%)
2	NAP	A	401	-	45,52,52	1.70	4 (8%)	56,80,80	1.12	2 (3%)
2	NAP	B	401	-	45,52,52	1.70	3 (6%)	56,80,80	1.11	3 (5%)

In the following table, the Chirals column lists the number of chiral outliers, the number of chiral centers analysed, the number of these observed in the model and the number defined in the Chemical Component Dictionary. Similar counts are reported in the Torsion and Rings columns. '-' means no outliers of that kind were identified.

Mol	Type	Chain	Res	Link	Chirals	Torsions	Rings
3	06U	D	402	-	-	4/10/17/17	0/3/3/3
2	NAP	C	401	-	-	4/31/67/67	0/5/5/5
7	PEG	C	403	-	-	2/4/4/4	-
3	06U	B	402	-	-	1/10/17/17	0/3/3/3
3	06U	C	402	-	-	0/10/17/17	0/3/3/3
3	06U	A	402	-	-	1/10/17/17	0/3/3/3
2	NAP	D	401	-	-	10/31/67/67	0/5/5/5
2	NAP	A	401	-	-	8/31/67/67	0/5/5/5
2	NAP	B	401	-	-	8/31/67/67	0/5/5/5

The worst 5 of 44 bond length outliers are listed below:

Mol	Chain	Res	Type	Atoms	Z	Observed(Å)	Ideal(Å)
3	C	402	06U	CAK-CAL	-13.91	1.05	1.19
3	C	402	06U	CAO-CAM	-13.78	1.39	1.52
3	B	402	06U	CAO-CAM	-13.42	1.39	1.52
3	A	402	06U	CAO-CAM	-12.79	1.40	1.52
3	D	402	06U	CAO-CAM	-12.57	1.40	1.52

The worst 5 of 50 bond angle outliers are listed below:

Mol	Chain	Res	Type	Atoms	Z	Observed(°)	Ideal(°)
3	A	402	06U	C2-N3-C4	5.88	121.14	116.24
3	C	402	06U	CAI-C4-C5	-5.64	118.65	122.66

*Continued on next page...*



*Continued from previous page...*

Mol	Chain	Res	Type	Atoms	Z	Observed(°)	Ideal(°)
3	B	402	06U	C2-N3-C4	5.60	120.91	116.24
2	C	401	NAP	N3A-C2A-N1A	-5.58	119.95	128.68
3	D	402	06U	C2-N3-C4	5.50	120.82	116.24

There are no chirality outliers.

5 of 38 torsion outliers are listed below:

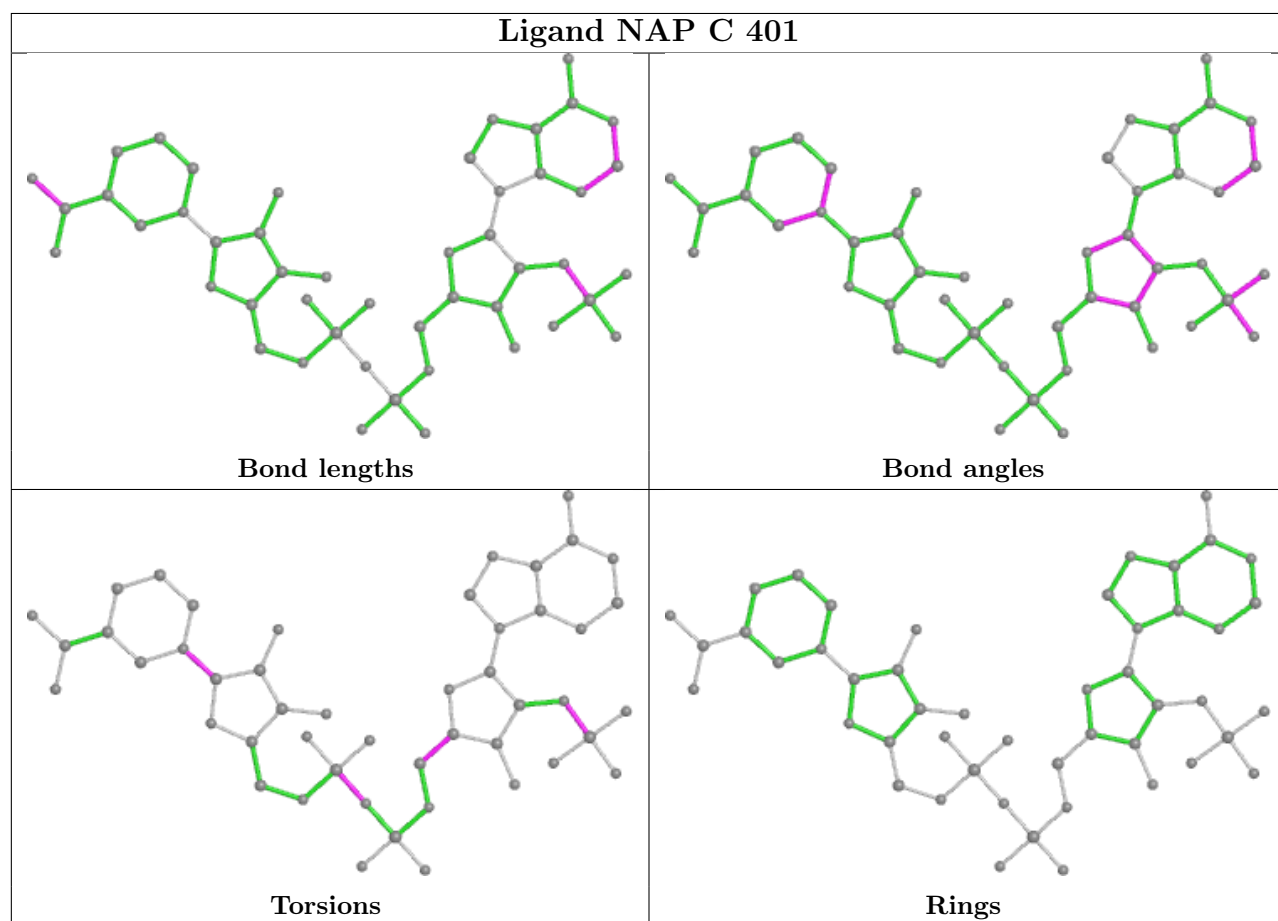
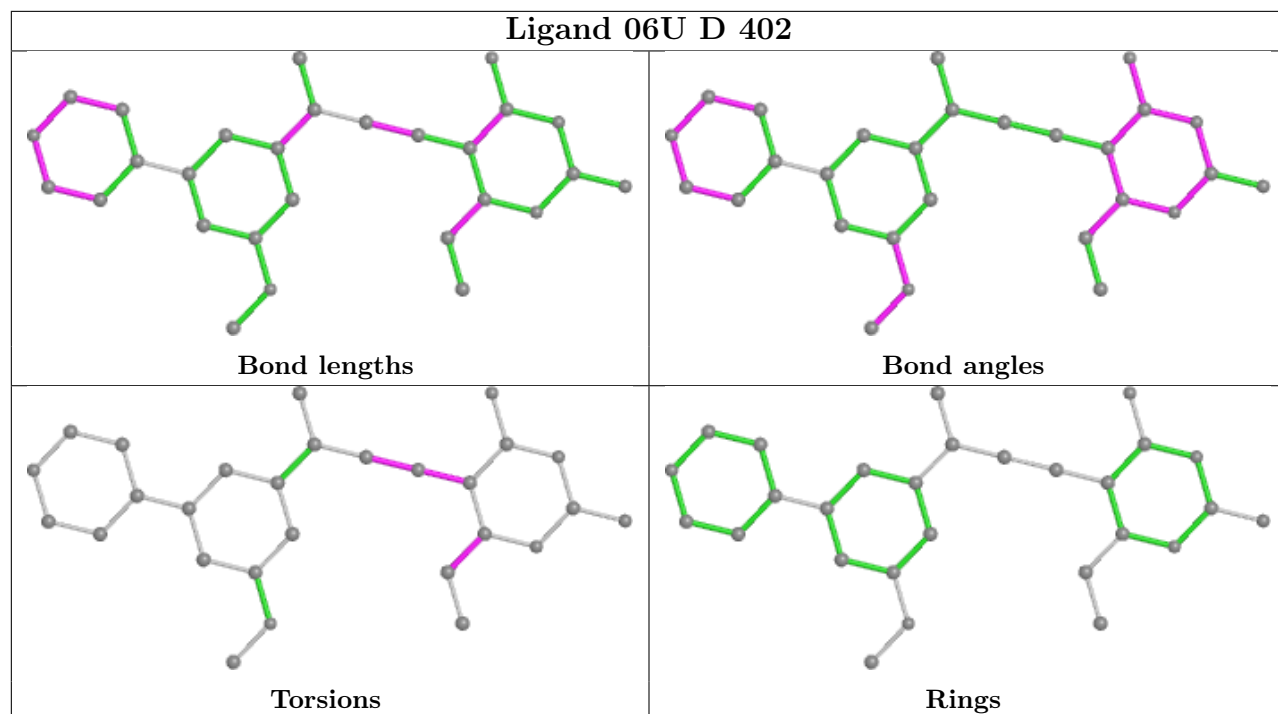
Mol	Chain	Res	Type	Atoms
2	A	401	NAP	PA-O3-PN-O5D
2	A	401	NAP	O4D-C1D-N1N-C2N
2	A	401	NAP	O4D-C1D-N1N-C6N
2	A	401	NAP	C2D-C1D-N1N-C2N
2	B	401	NAP	C5B-O5B-PA-O1A

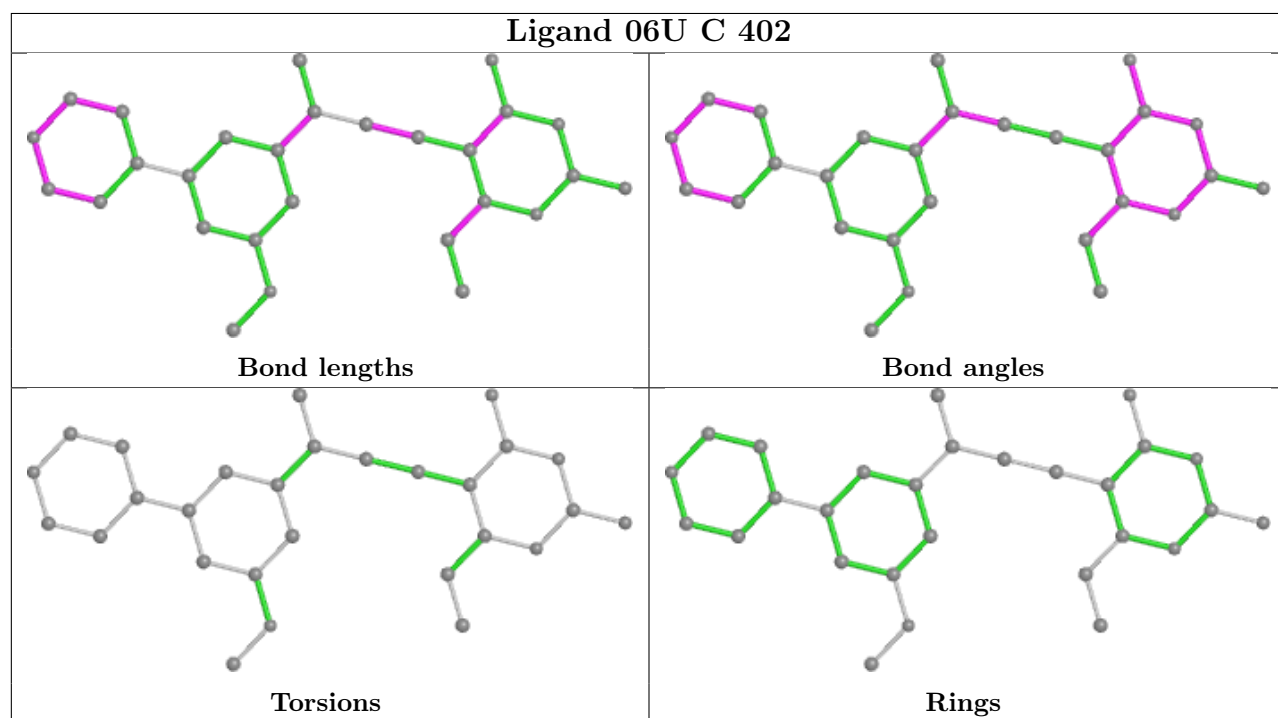
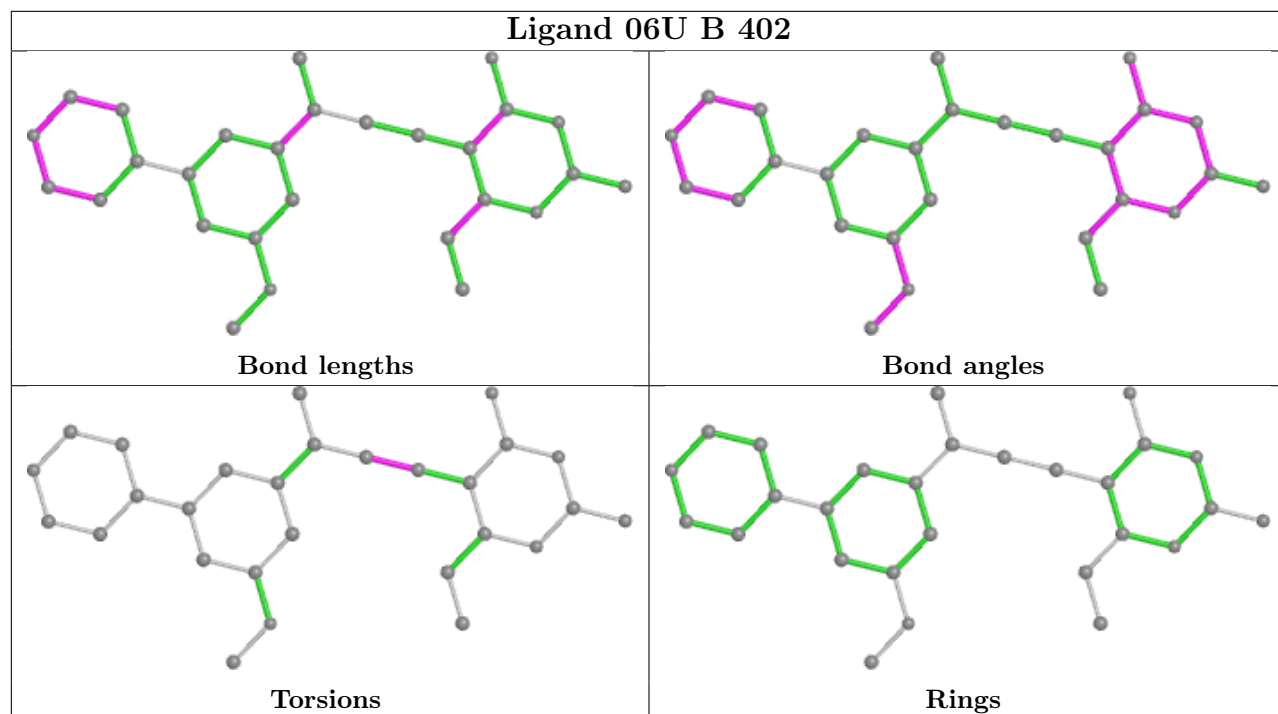
There are no ring outliers.

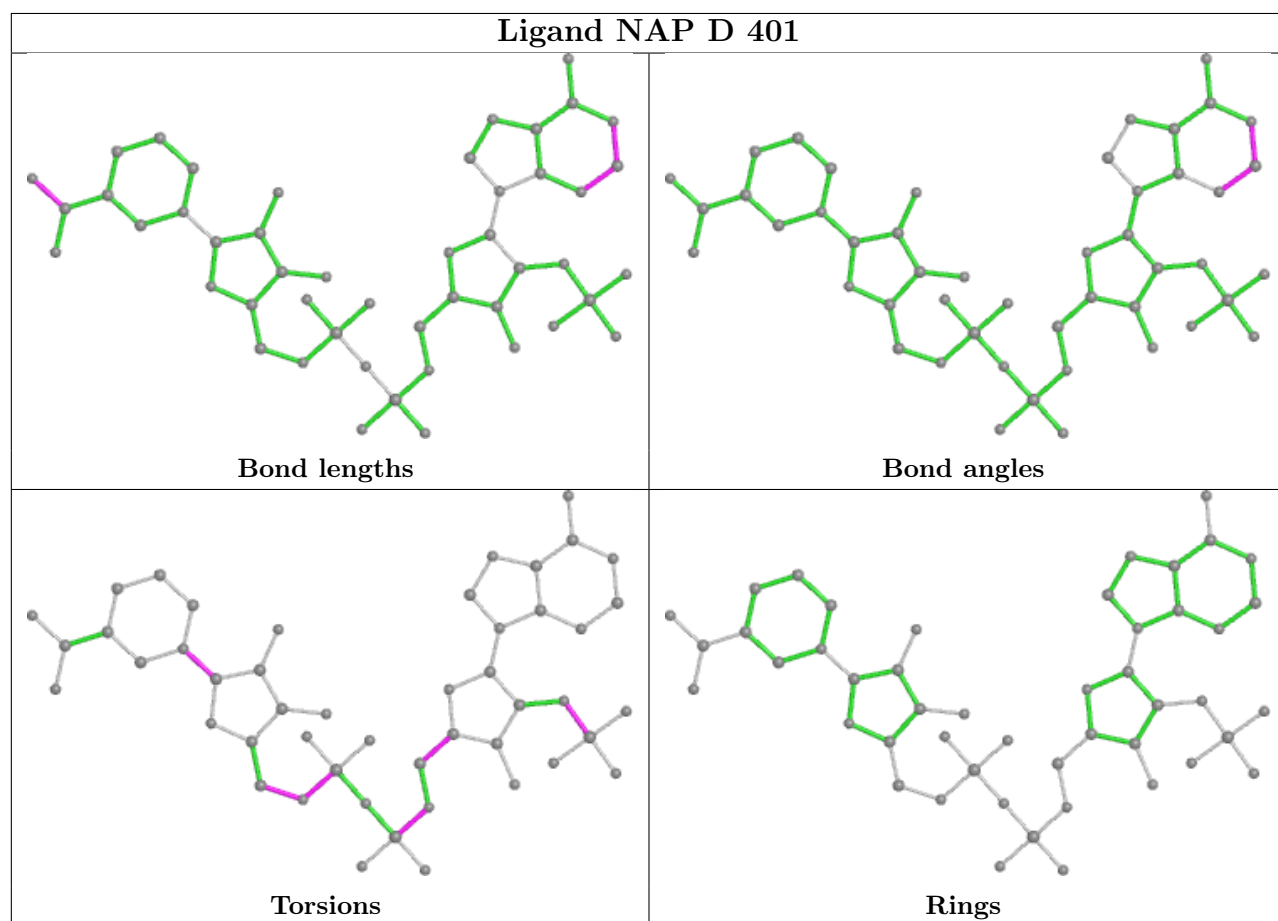
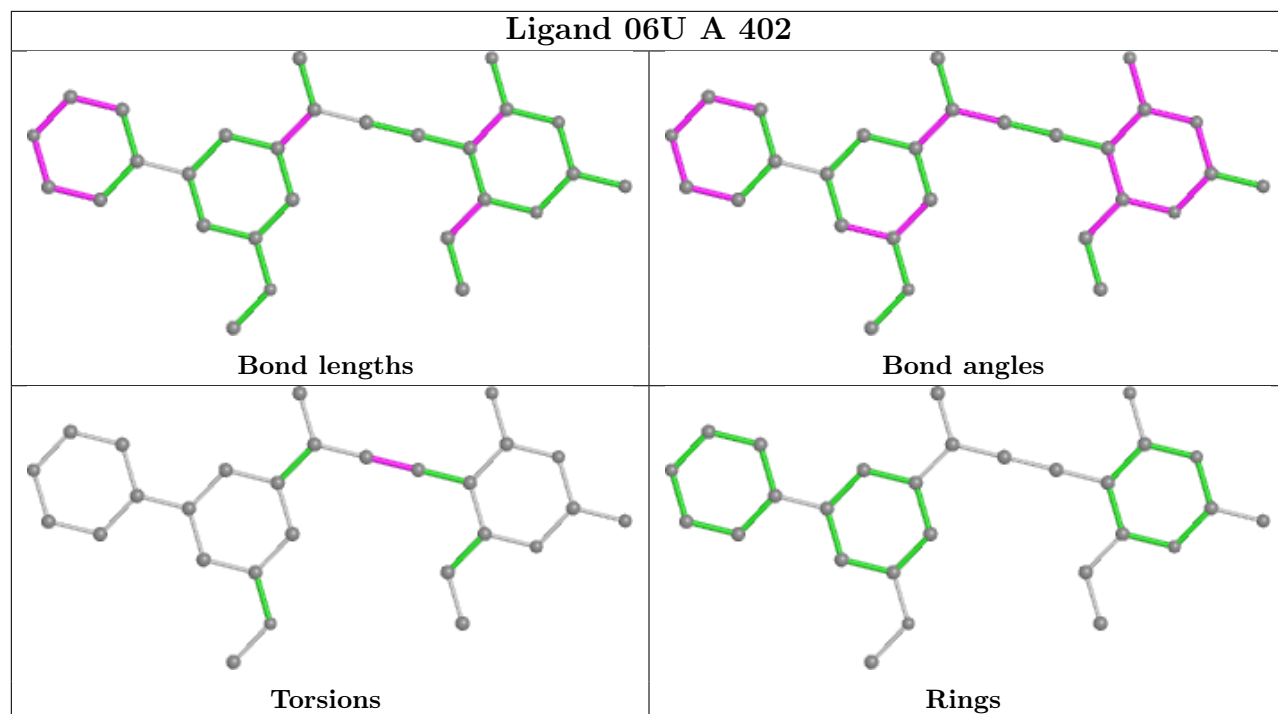
8 monomers are involved in 53 short contacts:

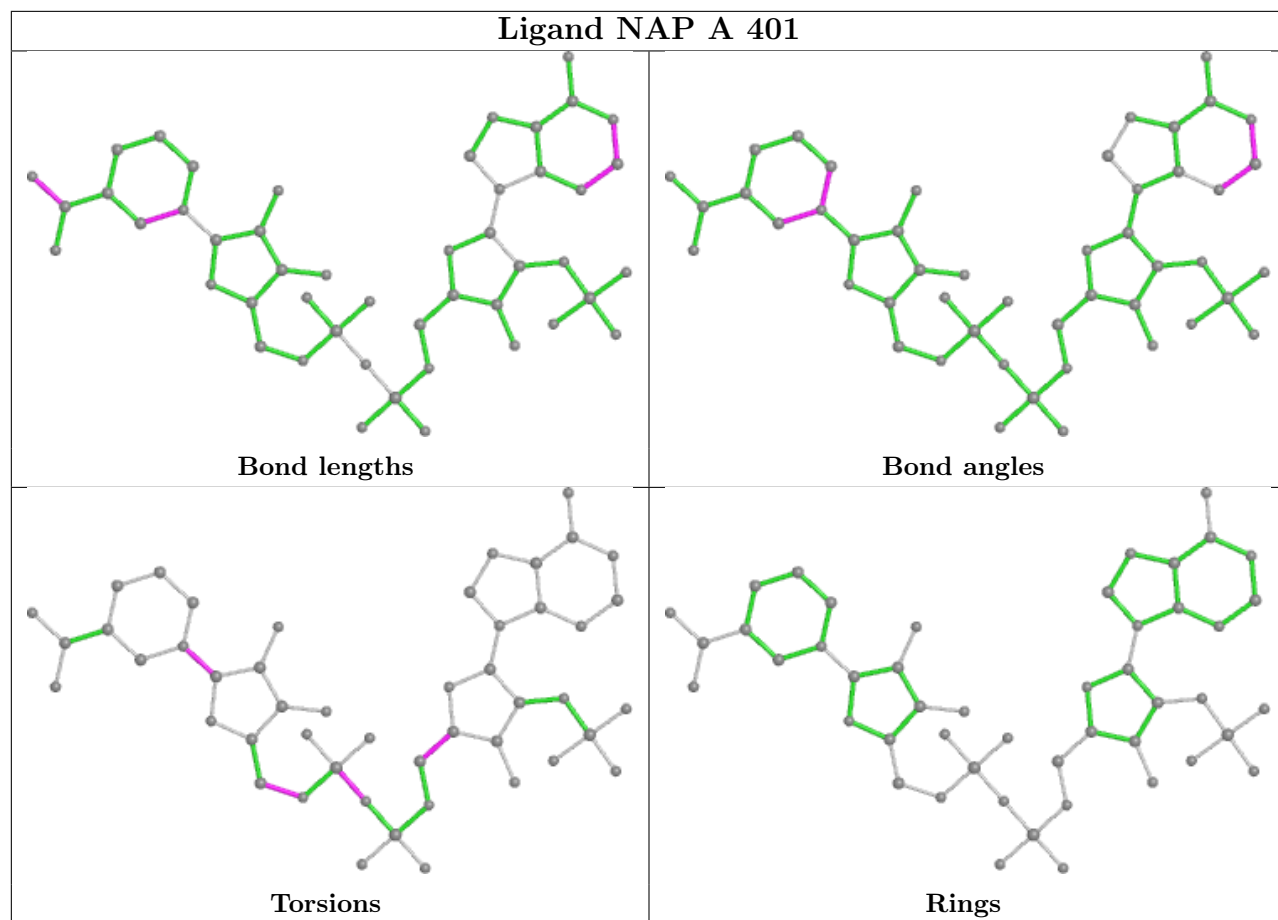
Mol	Chain	Res	Type	Clashes	Symm-Clashes
3	D	402	06U	5	0
2	C	401	NAP	3	0
3	B	402	06U	5	0
3	C	402	06U	9	0
3	A	402	06U	8	0
2	D	401	NAP	8	0
2	A	401	NAP	7	0
2	B	401	NAP	13	0

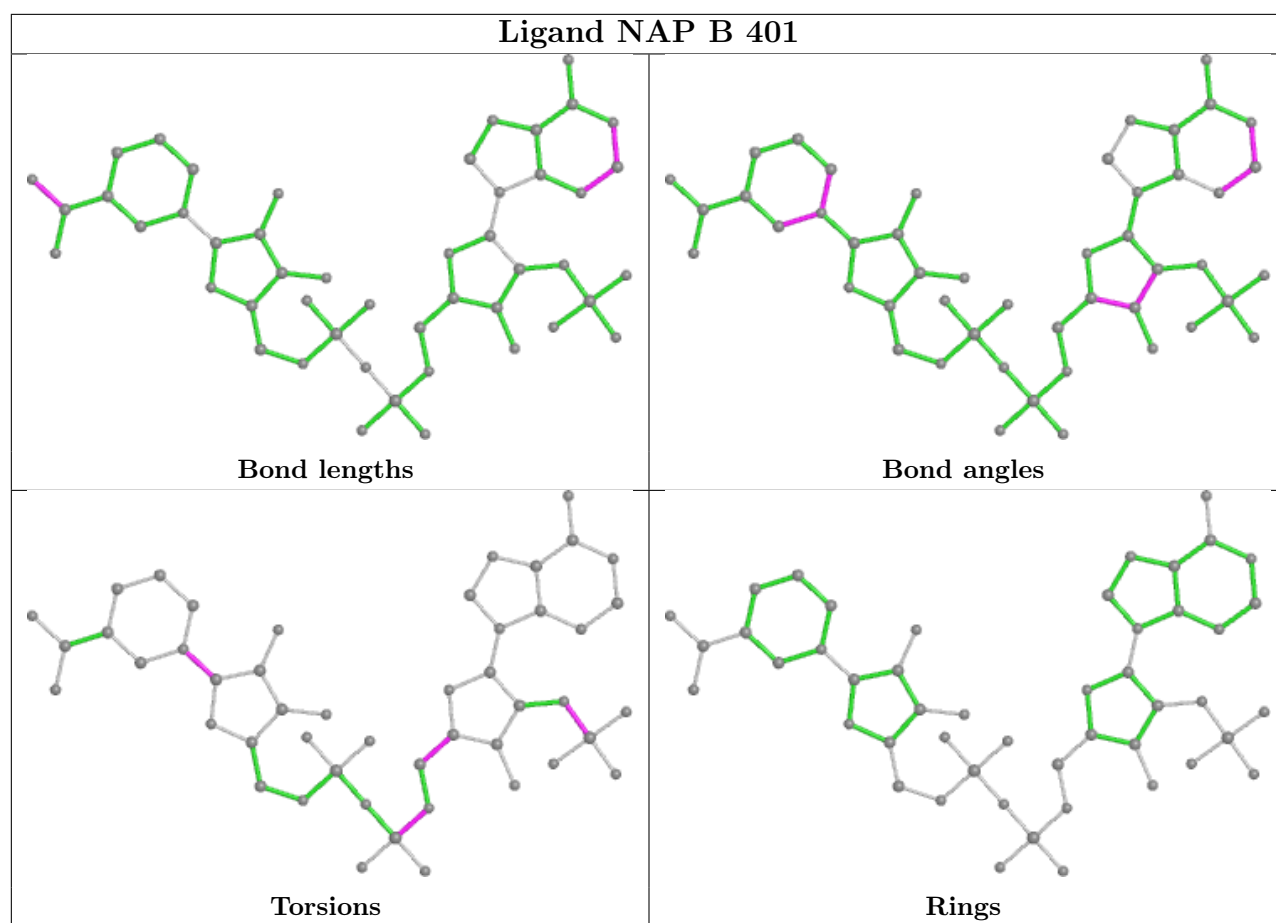
The following is a two-dimensional graphical depiction of Mogul quality analysis of bond lengths, bond angles, torsion angles, and ring geometry for all instances of the Ligand of Interest. In addition, ligands with molecular weight > 250 and outliers as shown on the validation Tables will also be included. For torsion angles, if less than 5% of the Mogul distribution of torsion angles is within 10 degrees of the torsion angle in question, then that torsion angle is considered an outlier. Any bond that is central to one or more torsion angles identified as an outlier by Mogul will be highlighted in the graph. For rings, the root-mean-square deviation (RMSD) between the ring in question and similar rings identified by Mogul is calculated over all ring torsion angles. If the average RMSD is greater than 60 degrees and the minimal RMSD between the ring in question and any Mogul-identified rings is also greater than 60 degrees, then that ring is considered an outlier. The outliers are highlighted in purple. The color gray indicates Mogul did not find sufficient equivalents in the CSD to analyse the geometry.











## 5.7 Other polymers [\(i\)](#)

There are no such residues in this entry.

## 5.8 Polymer linkage issues [\(i\)](#)

The following chains have linkage breaks:

Mol	Chain	Number of breaks
1	D	1

All chain breaks are listed below:

Model	Chain	Residue-1	Atom-1	Residue-2	Atom-2	Distance (Å)
1	D	59:ASN	C	60:ILE	N	1.17

## 6 Fit of model and data [i](#)

### 6.1 Protein, DNA and RNA chains [i](#)

In the following table, the column labelled ‘#RSRZ> 2’ contains the number (and percentage) of RSRZ outliers, followed by percent RSRZ outliers for the chain as percentile scores relative to all X-ray entries and entries of similar resolution. The OWAB column contains the minimum, median, 95<sup>th</sup> percentile and maximum values of the occupancy-weighted average B-factor per residue. The column labelled ‘Q< 0.9’ lists the number of (and percentage) of residues with an average occupancy less than 0.9.

Mol	Chain	Analysed	<RSRZ>	#RSRZ>2	OWAB(Å <sup>2</sup> )	Q<0.9
1	A	159/165 (96%)	0.13	2 (1%) 77 78	60, 81, 110, 128	0
1	B	159/165 (96%)	0.17	6 (3%) 40 39	60, 86, 118, 132	0
1	C	159/165 (96%)	0.03	4 (2%) 57 59	57, 75, 109, 127	0
1	D	159/165 (96%)	0.12	1 (0%) 89 91	68, 94, 129, 144	0
All	All	636/660 (96%)	0.11	13 (2%) 65 67	57, 84, 119, 144	0

The worst 5 of 13 RSRZ outliers are listed below:

Mol	Chain	Res	Type	RSRZ
1	C	66	PRO	5.1
1	B	131	ASP	4.3
1	D	62	ILE	3.2
1	B	91	ILE	2.9
1	B	119	VAL	2.9

### 6.2 Non-standard residues in protein, DNA, RNA chains [i](#)

There are no non-standard protein/DNA/RNA residues in this entry.

### 6.3 Carbohydrates [i](#)

There are no monosaccharides in this entry.

### 6.4 Ligands [i](#)

In the following table, the Atoms column lists the number of modelled atoms in the group and the number defined in the chemical component dictionary. The B-factors column lists the minimum, median, 95<sup>th</sup> percentile and maximum values of B factors of atoms in the group. The column labelled ‘Q< 0.9’ lists the number of atoms with occupancy less than 0.9.

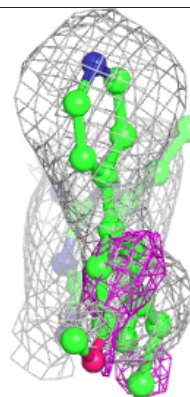
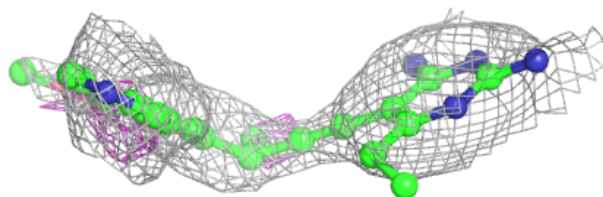
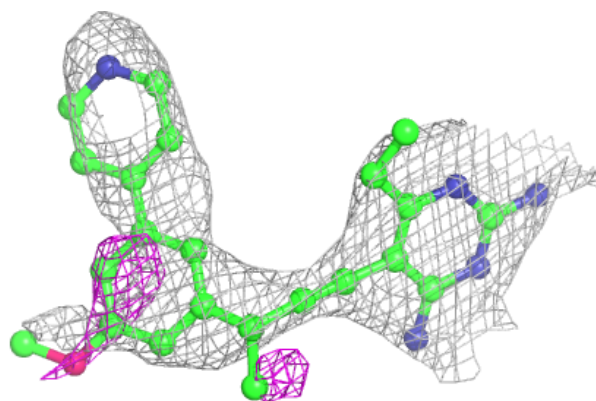
Mol	Type	Chain	Res	Atoms	RSCC	RSR	B-factors( $\text{\AA}^2$ )	Q<0.9
4	EOH	A	403	3/3	0.59	0.34	90,90,95,100	0
6	CL	B	404	1/1	0.60	0.14	147,147,147,147	0
8	CA	D	404	1/1	0.72	0.10	108,108,108,108	0
6	CL	C	406	1/1	0.75	0.10	87,87,87,87	0
7	PEG	C	403	7/7	0.78	0.17	50,72,75,86	0
5	CAC	D	405	5/5	0.84	0.19	127,143,163,181	0
3	06U	A	402	28/28	0.86	0.38	65,85,102,103	0
2	NAP	B	401	48/48	0.86	0.17	67,108,118,126	0
5	CAC	B	403	5/5	0.86	0.15	132,142,163,181	0
2	NAP	D	401	48/48	0.86	0.19	74,118,126,127	0
6	CL	D	403	1/1	0.88	0.08	88,88,88,88	0
2	NAP	A	401	48/48	0.90	0.13	68,94,115,117	0
8	CA	C	405	1/1	0.90	0.11	82,82,82,82	0
3	06U	C	402	28/28	0.90	0.26	60,78,94,97	0
6	CL	C	404	1/1	0.92	0.07	94,94,94,94	0
3	06U	D	402	28/28	0.92	0.30	67,89,101,102	0
2	NAP	C	401	48/48	0.93	0.16	58,72,112,125	0
3	06U	B	402	28/28	0.95	0.16	64,75,83,91	0

The following is a graphical depiction of the model fit to experimental electron density of all instances of the Ligand of Interest. In addition, ligands with molecular weight > 250 and outliers as shown on the geometry validation Tables will also be included. Each fit is shown from different orientation to approximate a three-dimensional view.

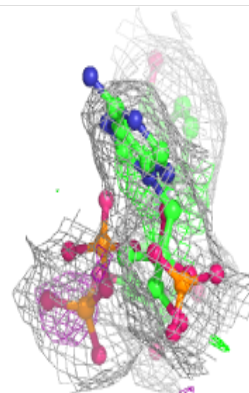
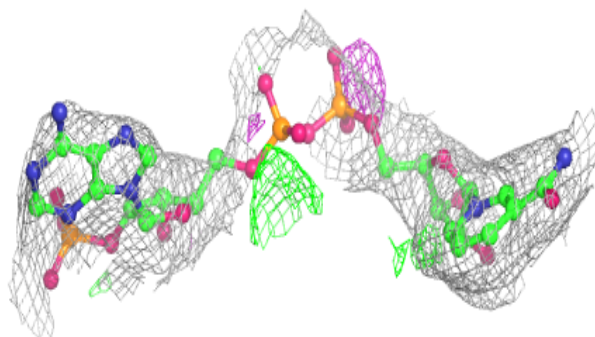
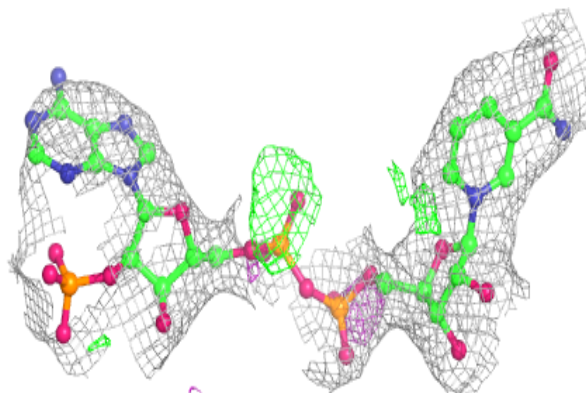


**Electron density around 06U A 402:**

$2mF_o-DF_c$  (at 0.7 rmsd) in gray  
 $mF_o-DF_c$  (at 3 rmsd) in purple (negative)  
and green (positive)

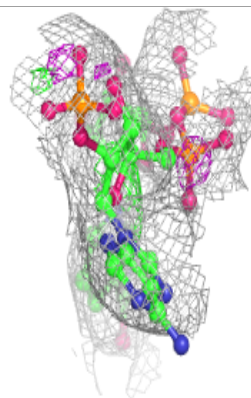
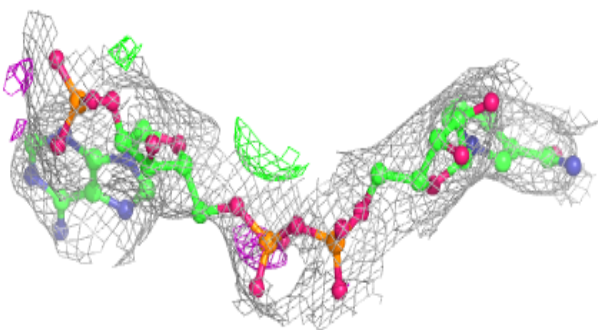
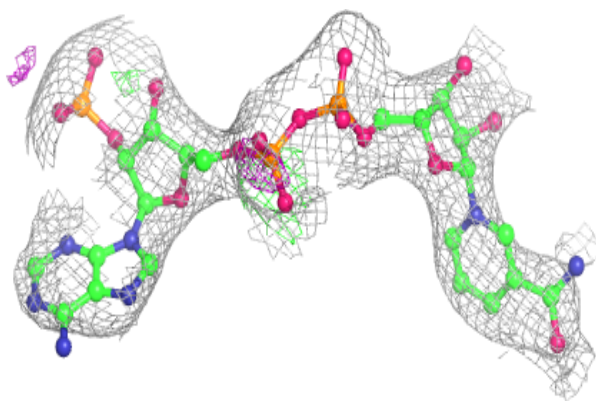
**Electron density around NAP B 401:**

$2mF_o-DF_c$  (at 0.7 rmsd) in gray  
 $mF_o-DF_c$  (at 3 rmsd) in purple (negative)  
and green (positive)

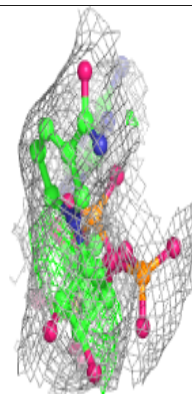
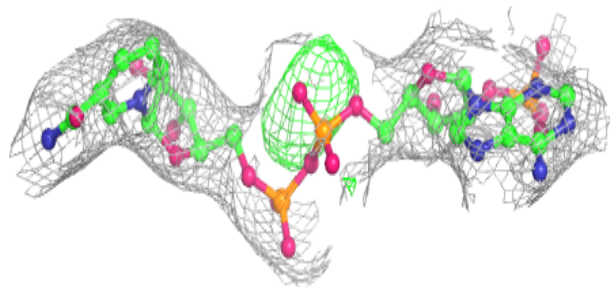
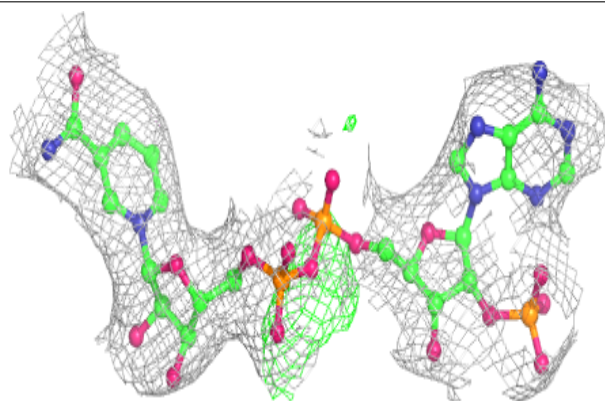


**Electron density around NAP D 401:**

$2mF_o-DF_c$  (at 0.7 rmsd) in gray  
 $mF_o-DF_c$  (at 3 rmsd) in purple (negative)  
and green (positive)

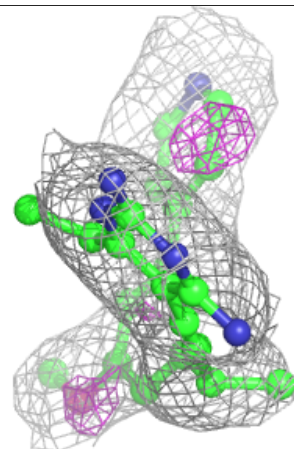
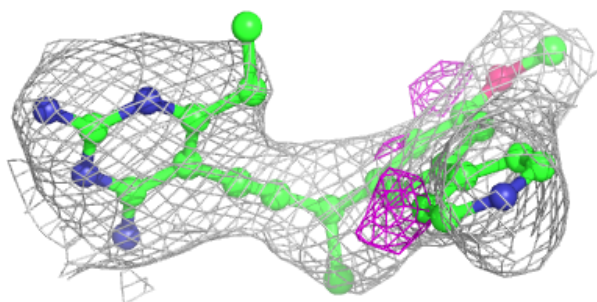
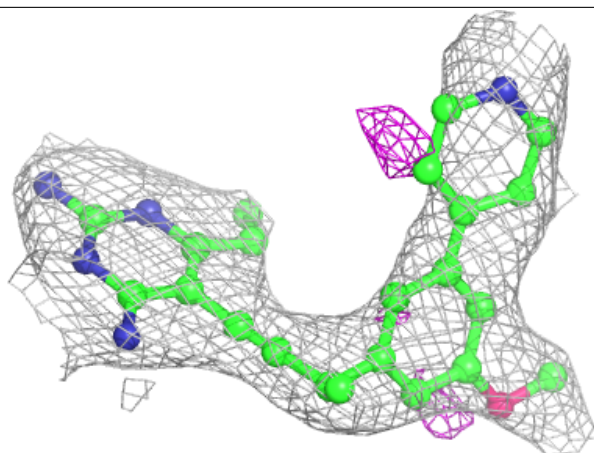
**Electron density around NAP A 401:**

$2mF_o-DF_c$  (at 0.7 rmsd) in gray  
 $mF_o-DF_c$  (at 3 rmsd) in purple (negative)  
and green (positive)

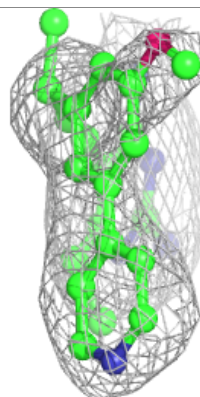
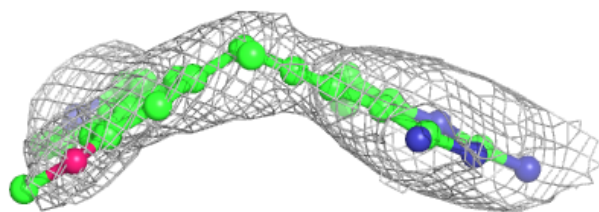
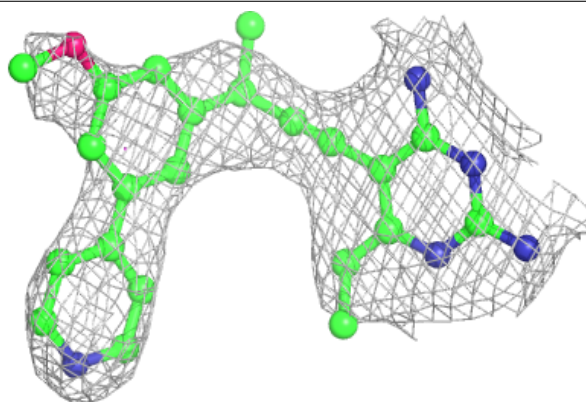


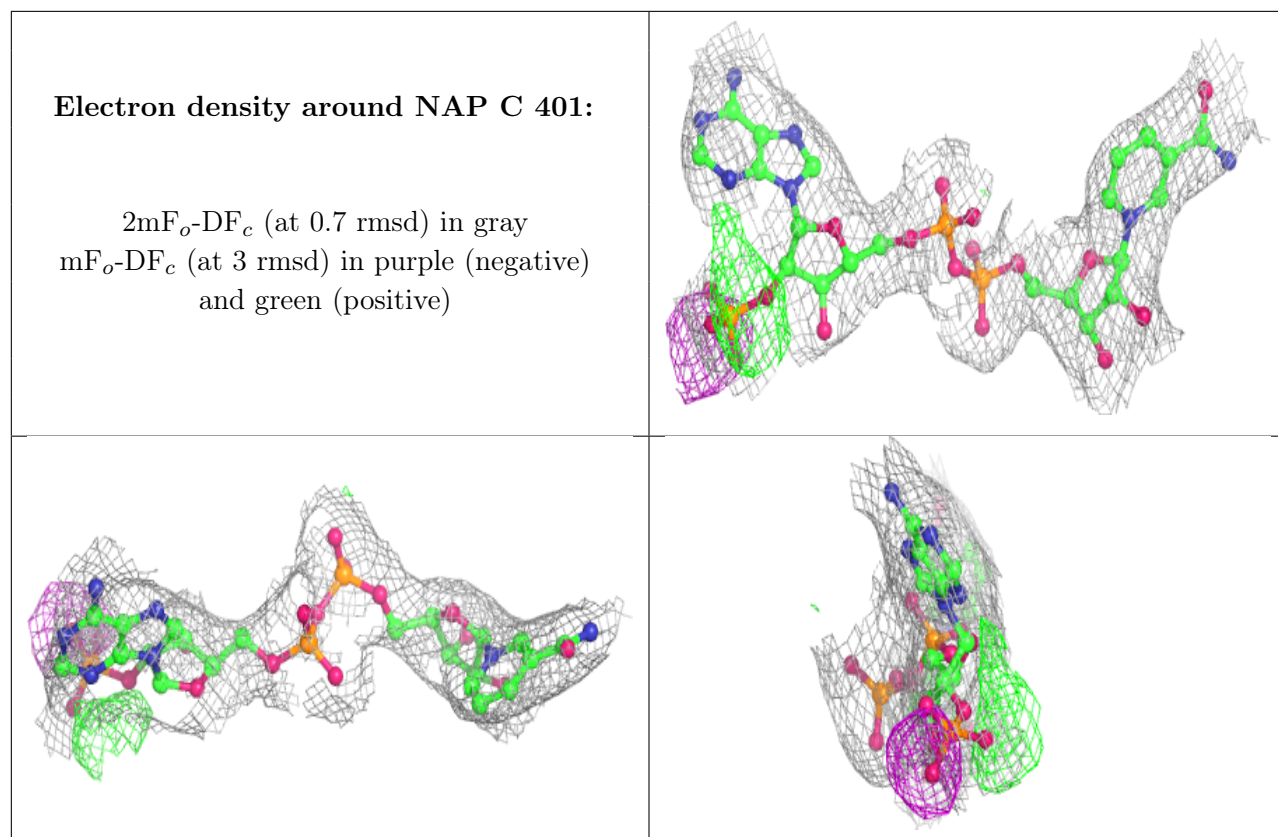
**Electron density around 06U C 402:**

$2mF_o-DF_c$  (at 0.7 rmsd) in gray  
 $mF_o-DF_c$  (at 3 rmsd) in purple (negative)  
and green (positive)

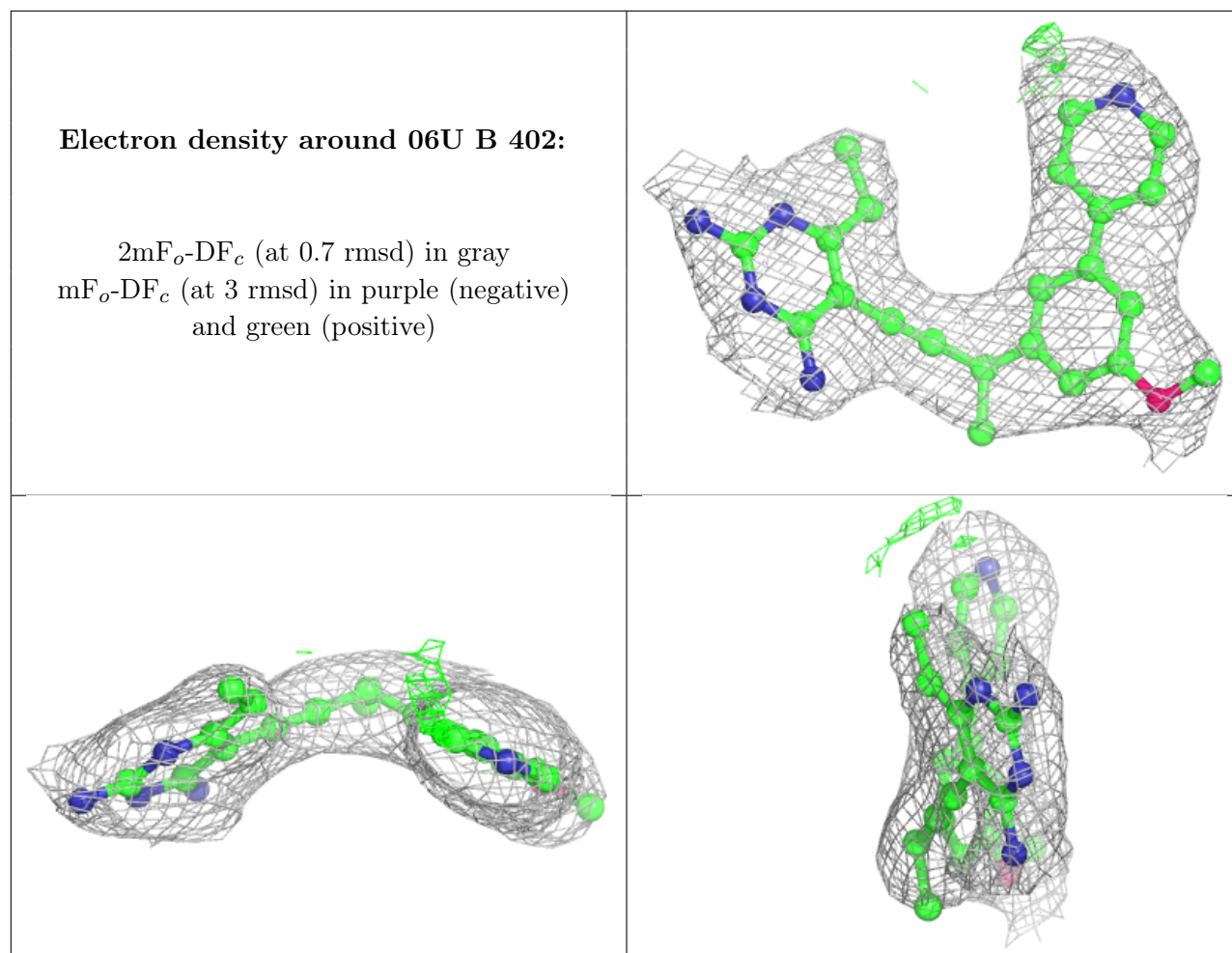
**Electron density around 06U D 402:**

$2mF_o-DF_c$  (at 0.7 rmsd) in gray  
 $mF_o-DF_c$  (at 3 rmsd) in purple (negative)  
and green (positive)









## 6.5 Other polymers [\(i\)](#)

There are no such residues in this entry.