



Full wwPDB EM Validation Report ⓘ

Nov 13, 2023 – 12:25 pm GMT

PDB ID : 8OTQ
EMDB ID : EMD-17182
Title : Cryo-EM structure of Strongylocentrotus purpuratus sperm-specific Na⁺/H⁺ exchanger SLC9C1 in GDN
Authors : Yeo, H.; Mehta, V.; Gulati, A.; Drew, D.
Deposited on : 2023-04-21
Resolution : 3.22 Å(reported)

This is a Full wwPDB EM Validation Report for a publicly released PDB entry.

We welcome your comments at validation@mail.wwpdb.org

A user guide is available at

<https://www.wwpdb.org/validation/2017/EMValidationReportHelp>

with specific help available everywhere you see the ⓘ symbol.

The types of validation reports are described at

<http://www.wwpdb.org/validation/2017/FAQs#types>.

The following versions of software and data (see [references ⓘ](#)) were used in the production of this report:

EMDB validation analysis : 0.0.1.dev70
Mogul : 1.8.4, CSD as541be (2020)
MolProbity : 4.02b-467
buster-report : 1.1.7 (2018)
Percentile statistics : 20191225.v01 (using entries in the PDB archive December 25th 2019)
MapQ : 1.9.9
Ideal geometry (proteins) : Engh & Huber (2001)
Ideal geometry (DNA, RNA) : Parkinson et al. (1996)
Validation Pipeline (wwPDB-VP) : 2.36

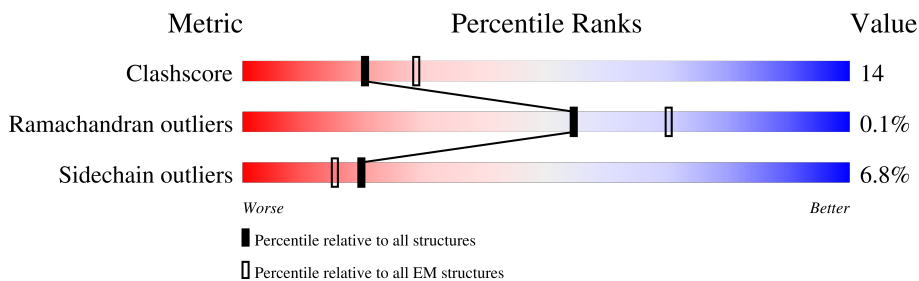
1 Overall quality at a glance

The following experimental techniques were used to determine the structure:

ELECTRON MICROSCOPY

The reported resolution of this entry is 3.22 Å.

Percentile scores (ranging between 0-100) for global validation metrics of the entry are shown in the following graphic. The table shows the number of entries on which the scores are based.



Metric	Whole archive (#Entries)	EM structures (#Entries)
Clashscore	158937	4297
Ramachandran outliers	154571	4023
Sidechain outliers	154315	3826

The table below summarises the geometric issues observed across the polymeric chains and their fit to the map. The red, orange, yellow and green segments of the bar indicate the fraction of residues that contain outliers for ≥ 3 , 2, 1 and 0 types of geometric quality criteria respectively. A grey segment represents the fraction of residues that are not modelled. The numeric value for each fraction is indicated below the corresponding segment, with a dot representing fractions $\leq 5\%$. The upper red bar (where present) indicates the fraction of residues that have poor fit to the EM map (all-atom inclusion $< 40\%$). The numeric value is given above the bar.

Mol	Chain	Length	Quality of chain
1	A	1331	
1	B	1331	

2 Entry composition i

There are 3 unique types of molecules in this entry. The entry contains 16716 atoms, of which 0 are hydrogens and 0 are deuteriums.

In the tables below, the AltConf column contains the number of residues with at least one atom in alternate conformation and the Trace column contains the number of residues modelled with at most 2 atoms.

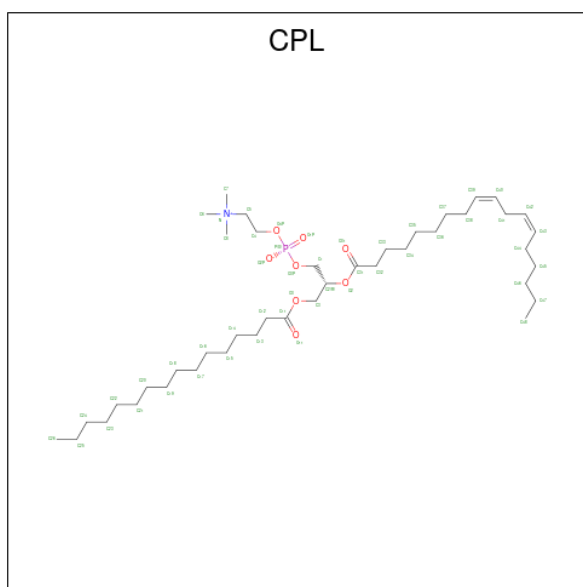
- Molecule 1 is a protein called Sperm-specific sodium proton exchanger.

Mol	Chain	Residues	Atoms					AltConf	Trace
			Total	C	N	O	S		
1	A	1051	8297	5422	1376	1456	43	0	0
1	B	1051	8297	5422	1376	1456	43	0	0

There are 12 discrepancies between the modelled and reference sequences:

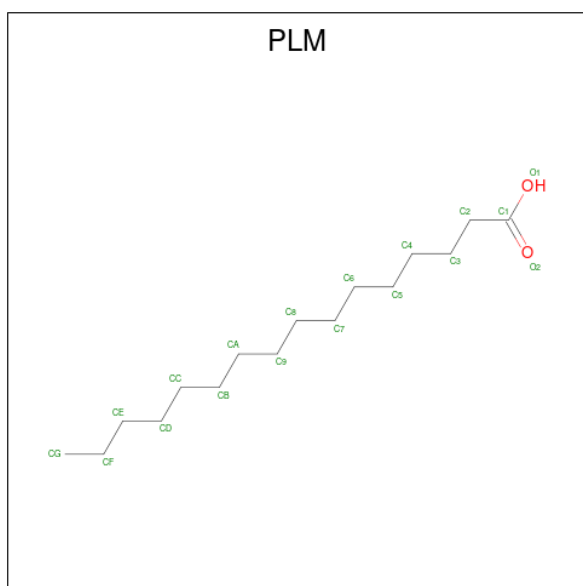
Chain	Residue	Modelled	Actual	Comment	Reference
A	1326	GLU	-	expression tag	UNP A3RL54
A	1327	ASN	-	expression tag	UNP A3RL54
A	1328	LEU	-	expression tag	UNP A3RL54
A	1329	TYR	-	expression tag	UNP A3RL54
A	1330	PHE	-	expression tag	UNP A3RL54
A	1331	GLN	-	expression tag	UNP A3RL54
B	1326	GLU	-	expression tag	UNP A3RL54
B	1327	ASN	-	expression tag	UNP A3RL54
B	1328	LEU	-	expression tag	UNP A3RL54
B	1329	TYR	-	expression tag	UNP A3RL54
B	1330	PHE	-	expression tag	UNP A3RL54
B	1331	GLN	-	expression tag	UNP A3RL54

- Molecule 2 is 1-PALMITOYL-2-LINOLEOYL-SN-GLYCERO-3-PHOSPHOCHOLINE (three-letter code: CPL) (formula: C₄₂H₈₀NO₈P) (labeled as "Ligand of Interest" by depositor).



Mol	Chain	Residues	Atoms					AltConf
			Total	C	N	O	P	
2	A	1	43	33	1	8	1	0
2	B	1	43	33	1	8	1	0

- Molecule 3 is PALMITIC ACID (three-letter code: PLM) (formula: C₁₆H₃₂O₂) (labeled as "Ligand of Interest" by depositor).



Mol	Chain	Residues	Atoms			AltConf
			Total	C	O	
3	A	1	18	16	2	0

Continued on next page...

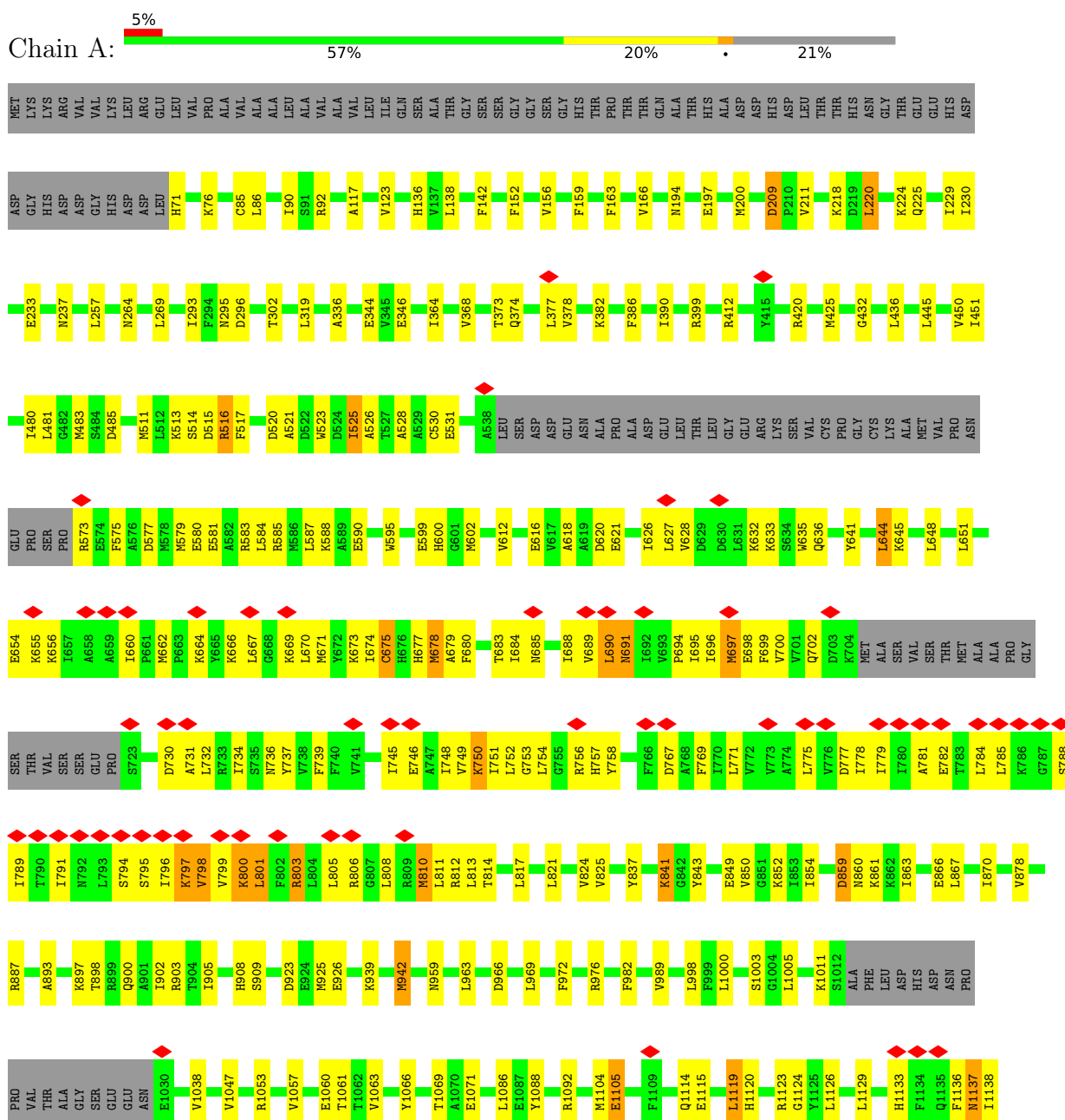
Continued from previous page...

Mol	Chain	Residues	Atoms			AltConf
			Total	C	O	
3	B	1	18	16	2	0

3 Residue-property plots

These plots are drawn for all protein, RNA, DNA and oligosaccharide chains in the entry. The first graphic for a chain summarises the proportions of the various outlier classes displayed in the second graphic. The second graphic shows the sequence view annotated by issues in geometry and atom inclusion in map density. Residues are color-coded according to the number of geometric quality criteria for which they contain at least one outlier: green = 0, yellow = 1, orange = 2 and red = 3 or more. A red diamond above a residue indicates a poor fit to the EM map for this residue (all-atom inclusion < 40%). Stretches of 2 or more consecutive residues without any outlier are shown as a green connector. Residues present in the sample, but not in the model, are shown in grey.

- Molecule 1: Sperm-specific sodium proton exchanger



H1133	H1134	H1135	H1136	H1137	H1138	L1142	I1148	M1149	G1150	T1151	A1152	Y1153	M1154	R1158	I1161	R1162	S1163	P1164	S1168	R1169	K1173	F1176	Q1177	Y1178	T1179	A1180	T1181	P1184	R1185	L1186	F1187	V1188	V1189	R1190															
LYS	ARG	SER	VAL	PRO	THR	LYS	THR	THR	THR	PRO	PRO	LYS	LYS	ASN	MET	PHE	LEU	PRO	SER	LEU	HIS	ALA	ALA	GLY	LEU	SER	MET	VAL	LYS	ASN	VAL	VAL	VAL	VAL	VAL	VAL	VAL	VAL	VAL	VAL	VAL	VAL	VAL	VAL	VAL	VAL			
PRO	SER	VAL	PRO	THR	LYS	THR	THR	THR	PRO	PRO	LYS	LYS	ASN	MET	PHE	LEU	PRO	SER	LEU	HIS	ALA	ALA	GLY	LEU	SER	MET	VAL	LYS	ASN	VAL	VAL	VAL	VAL	VAL	VAL	VAL	VAL	VAL	VAL	VAL	VAL	VAL	VAL	VAL	VAL	VAL	VAL		
LEU	TYR	PHE	GLN																																														

4 Experimental information

Property	Value	Source
EM reconstruction method	SINGLE PARTICLE	Depositor
Imposed symmetry	POINT, Not provided	
Number of particles used	168016	Depositor
Resolution determination method	FSC 0.143 CUT-OFF	Depositor
CTF correction method	PHASE FLIPPING AND AMPLITUDE CORRECTION	Depositor
Microscope	FEI TITAN KRIOS	Depositor
Voltage (kV)	300	Depositor
Electron dose ($e^-/\text{\AA}^2$)	58.45	Depositor
Minimum defocus (nm)	600	Depositor
Maximum defocus (nm)	2000	Depositor
Magnification	Not provided	
Image detector	GATAN K3 BIOQUANTUM (6k x 4k)	Depositor
Maximum map value	0.473	Depositor
Minimum map value	-0.198	Depositor
Average map value	-0.000	Depositor
Map value standard deviation	0.014	Depositor
Recommended contour level	0.08	Depositor
Map size (Å)	340.238, 340.238, 340.238	wwPDB
Map dimensions	340, 340, 340	wwPDB
Map angles (°)	90.0, 90.0, 90.0	wwPDB
Pixel spacing (Å)	1.0007, 1.0007, 1.0007	Depositor

5 Model quality [i](#)

5.1 Standard geometry [i](#)

Bond lengths and bond angles in the following residue types are not validated in this section: PLM, CPL

The Z score for a bond length (or angle) is the number of standard deviations the observed value is removed from the expected value. A bond length (or angle) with $|Z| > 5$ is considered an outlier worth inspection. RMSZ is the root-mean-square of all Z scores of the bond lengths (or angles).

Mol	Chain	Bond lengths		Bond angles	
		RMSZ	# Z >5	RMSZ	# Z >5
1	A	0.32	1/8458 (0.0%)	0.53	2/11468 (0.0%)
1	B	0.33	1/8458 (0.0%)	0.53	2/11468 (0.0%)
All	All	0.32	2/16916 (0.0%)	0.53	4/22936 (0.0%)

All (2) bond length outliers are listed below:

Mol	Chain	Res	Type	Atoms	Z	Observed(Å)	Ideal(Å)
1	A	480	ILE	C-N	-5.58	1.21	1.34
1	B	480	ILE	C-N	-5.57	1.21	1.34

All (4) bond angle outliers are listed below:

Mol	Chain	Res	Type	Atoms	Z	Observed(°)	Ideal(°)
1	A	209	ASP	CB-CG-OD1	6.48	124.13	118.30
1	B	209	ASP	CB-CG-OD1	6.48	124.13	118.30
1	A	690	LEU	CA-CB-CG	5.15	127.14	115.30
1	B	690	LEU	CA-CB-CG	5.12	127.08	115.30

There are no chirality outliers.

There are no planarity outliers.

5.2 Too-close contacts [i](#)

In the following table, the Non-H and H(model) columns list the number of non-hydrogen atoms and hydrogen atoms in the chain respectively. The H(added) column lists the number of hydrogen atoms added and optimized by MolProbity. The Clashes column lists the number of clashes within the asymmetric unit, whereas Symm-Clashes lists symmetry-related clashes.

Mol	Chain	Non-H	H(model)	H(added)	Clashes	Symm-Clashes
1	A	8297	0	8662	241	0
1	B	8297	0	8662	250	0
2	A	43	0	58	2	0
2	B	43	0	58	2	0
3	A	18	0	31	1	0
3	B	18	0	31	1	0
All	All	16716	0	17502	468	0

The all-atom clashscore is defined as the number of clashes found per 1000 atoms (including hydrogen atoms). The all-atom clashscore for this structure is 14.

All (468) close contacts within the same asymmetric unit are listed below, sorted by their clash magnitude.

Atom-1	Atom-2	Interatomic distance (Å)	Clash overlap (Å)
1:B:688:ILE:HG21	1:B:813:LEU:HD21	1.21	1.12
1:B:861:LYS:HE2	1:B:861:LYS:HA	1.32	1.11
1:A:688:ILE:HG21	1:A:813:LEU:HD21	1.21	1.08
1:A:861:LYS:HA	1:A:861:LYS:HE2	1.32	1.05
1:A:905:ILE:HD12	1:B:525:ILE:HD11	1.37	1.03
1:A:688:ILE:CG2	1:A:813:LEU:HD21	2.03	0.88
1:B:684:ILE:HG12	1:B:812:ARG:NH1	1.91	0.86
1:B:688:ILE:CG2	1:B:813:LEU:HD21	2.04	0.86
1:B:691:ASN:HD22	1:B:694:PRO:HG2	1.41	0.85
1:A:684:ILE:HG12	1:A:812:ARG:NH1	1.91	0.85
1:A:691:ASN:HD22	1:A:694:PRO:HG2	1.41	0.84
1:B:803:ARG:HD3	1:B:806:ARG:HH22	1.45	0.82
1:A:803:ARG:HD3	1:A:806:ARG:HH22	1.45	0.81
1:A:1071:GLU:OE2	1:A:1071:GLU:N	2.16	0.79
1:B:795:SER:HA	1:B:799:VAL:H	1.47	0.79
1:A:756:ARG:NE	1:A:756:ARG:HA	1.97	0.79
1:A:959:ASN:HB3	1:B:523:TRP:CD1	2.18	0.79
1:B:795:SER:HA	1:B:798:VAL:HB	1.65	0.78
1:A:795:SER:HA	1:A:799:VAL:H	1.47	0.78
1:B:756:ARG:HA	1:B:756:ARG:NE	1.97	0.78
1:A:795:SER:HA	1:A:798:VAL:HB	1.64	0.78
1:B:1071:GLU:N	1:B:1071:GLU:OE2	2.16	0.77
1:A:861:LYS:HE2	1:A:861:LYS:CA	2.14	0.76
1:B:808:LEU:HD22	1:B:811:LEU:HD11	1.68	0.75
1:A:808:LEU:HD22	1:A:811:LEU:HD11	1.68	0.75
1:A:795:SER:HA	1:A:799:VAL:N	2.02	0.75
1:B:690:LEU:CD1	1:B:739:PHE:HZ	2.01	0.74
1:A:690:LEU:CD1	1:A:739:PHE:HZ	2.01	0.74

Continued on next page...

Continued from previous page...

Atom-1	Atom-2	Interatomic distance (Å)	Clash overlap (Å)
1:B:795:SER:HA	1:B:799:VAL:N	2.02	0.73
1:A:784:LEU:HD13	1:A:796:ILE:HD13	1.69	0.73
1:B:784:LEU:HD13	1:B:796:ILE:HD13	1.69	0.73
1:A:753:GLY:C	1:A:754:LEU:HD22	2.10	0.72
1:A:523:TRP:CD1	1:B:959:ASN:HB3	2.24	0.72
1:A:903:ARG:HG3	1:A:903:ARG:HH11	1.55	0.72
1:B:903:ARG:HG3	1:B:903:ARG:HH11	1.55	0.72
1:B:753:GLY:C	1:B:754:LEU:HD22	2.10	0.72
1:B:531:GLU:OE2	1:B:531:GLU:N	2.23	0.71
1:A:531:GLU:N	1:A:531:GLU:OE2	2.23	0.71
1:B:581:GLU:OE1	1:B:585:ARG:NH2	2.24	0.71
1:B:861:LYS:HE2	1:B:861:LYS:CA	2.14	0.71
1:A:581:GLU:OE1	1:A:585:ARG:NH2	2.24	0.70
1:B:590:GLU:HG2	1:B:850:VAL:HG21	1.73	0.70
1:A:688:ILE:HG21	1:A:813:LEU:CD2	2.13	0.69
1:A:590:GLU:HG2	1:A:850:VAL:HG21	1.73	0.69
1:B:690:LEU:HD12	1:B:739:PHE:HZ	1.59	0.68
1:A:530:CYS:SG	1:A:531:GLU:N	2.67	0.67
1:A:690:LEU:HD12	1:A:739:PHE:HZ	1.59	0.67
1:A:344:GLU:N	1:A:344:GLU:OE1	2.26	0.67
1:B:530:CYS:SG	1:B:531:GLU:N	2.68	0.67
1:B:678:MET:SD	1:B:678:MET:N	2.66	0.67
1:A:691:ASN:ND2	1:A:694:PRO:HG2	2.10	0.67
1:A:796:ILE:HG23	1:A:797:LYS:HD2	1.77	0.67
1:B:368:VAL:HG21	1:B:436:LEU:HD22	1.77	0.66
1:A:679:ALA:O	1:A:683:THR:HG23	1.96	0.66
1:A:784:LEU:HD21	1:A:789:ILE:CG1	2.25	0.66
1:B:513:LYS:HG2	1:B:523:TRP:CZ2	2.30	0.66
1:B:679:ALA:O	1:B:683:THR:HG23	1.96	0.66
1:B:691:ASN:ND2	1:B:694:PRO:HG2	2.10	0.66
1:A:730:ASP:O	1:A:734:ILE:HG12	1.96	0.65
1:B:344:GLU:OE1	1:B:344:GLU:N	2.26	0.65
1:B:784:LEU:HD21	1:B:789:ILE:CG1	2.25	0.65
1:B:1088:TYR:CE1	1:B:1126:LEU:HB3	2.31	0.65
1:A:368:VAL:HG21	1:A:436:LEU:HD22	1.77	0.65
1:B:346:GLU:OE2	1:B:346:GLU:N	2.23	0.65
1:B:513:LYS:HG2	1:B:523:TRP:CH2	2.31	0.65
1:A:1088:TYR:HE1	1:A:1126:LEU:HB3	1.61	0.65
1:B:730:ASP:O	1:B:734:ILE:HG12	1.96	0.65
1:A:859:ASP:OD1	1:A:860:ASN:N	2.29	0.64
1:B:778:ILE:HD13	1:B:782:GLU:OE2	1.96	0.64

Continued on next page...

Continued from previous page...

Atom-1	Atom-2	Interatomic distance (Å)	Clash overlap (Å)
1:B:796:ILE:HG23	1:B:797:LYS:HD2	1.77	0.64
1:A:748:ILE:O	1:A:752:LEU:HB2	1.98	0.64
1:B:688:ILE:HG21	1:B:813:LEU:CD2	2.13	0.64
1:A:778:ILE:HD13	1:A:782:GLU:OE2	1.96	0.64
1:B:218:LYS:HE3	1:B:218:LYS:HA	1.80	0.64
1:B:859:ASP:OD1	1:B:860:ASN:N	2.29	0.64
1:B:748:ILE:O	1:B:752:LEU:HB2	1.98	0.64
1:A:218:LYS:HE3	1:A:218:LYS:HA	1.80	0.64
1:A:525:ILE:HD11	1:B:905:ILE:HD12	1.79	0.63
1:A:810:MET:O	1:A:813:LEU:HG	1.98	0.63
1:B:810:MET:O	1:B:813:LEU:HG	1.98	0.63
1:B:1138:ILE:HA	1:B:1142:LEU:HD21	1.81	0.62
1:A:678:MET:SD	1:A:678:MET:N	2.66	0.62
1:B:989:VAL:HG11	1:B:1053:ARG:HD2	1.82	0.62
1:B:1162:ARG:HG3	1:B:1164:PRO:HD2	1.81	0.62
1:A:837:TYR:CE1	1:A:897:LYS:HE3	2.35	0.61
1:B:785:LEU:N	1:B:785:LEU:HD23	2.15	0.61
1:B:1120:HIS:CD2	1:B:1123:ARG:HH21	2.18	0.61
1:B:799:VAL:HG13	1:B:803:ARG:CZ	2.30	0.61
1:A:799:VAL:HG13	1:A:803:ARG:CZ	2.30	0.61
1:A:1120:HIS:CD2	1:A:1123:ARG:HH21	2.19	0.61
1:A:989:VAL:HG11	1:A:1053:ARG:HD2	1.82	0.60
1:B:837:TYR:CE1	1:B:897:LYS:HE3	2.35	0.60
1:B:364:ILE:O	1:B:368:VAL:HG12	2.02	0.60
1:B:688:ILE:HD11	1:B:812:ARG:NH1	2.17	0.60
1:A:756:ARG:HA	1:A:756:ARG:HE	1.66	0.60
1:A:785:LEU:HD23	1:A:785:LEU:N	2.15	0.60
1:A:688:ILE:HD11	1:A:812:ARG:NH1	2.17	0.59
1:B:756:ARG:HA	1:B:756:ARG:HE	1.66	0.59
1:A:1088:TYR:CE1	1:A:1126:LEU:HB3	2.37	0.59
1:A:346:GLU:OE2	1:A:346:GLU:N	2.23	0.59
1:A:959:ASN:CG	1:B:523:TRP:HD1	2.05	0.59
1:A:814:THR:HA	1:A:817:LEU:HB3	1.85	0.59
1:A:666:LYS:NZ	1:A:671:MET:SD	2.68	0.59
1:A:364:ILE:O	1:A:368:VAL:HG12	2.02	0.59
1:A:795:SER:HB3	1:A:799:VAL:HG23	1.84	0.59
1:B:666:LYS:HE3	1:B:667:LEU:H	1.68	0.58
1:B:795:SER:HB3	1:B:799:VAL:HG23	1.84	0.58
1:B:814:THR:HA	1:B:817:LEU:HB3	1.85	0.58
1:B:860:ASN:C	1:B:861:LYS:HD2	2.24	0.58
1:A:670:LEU:HD23	1:A:673:LYS:HE3	1.85	0.58

Continued on next page...

Continued from previous page...

Atom-1	Atom-2	Interatomic distance (Å)	Clash overlap (Å)
1:B:893:ALA:O	1:B:897:LYS:HG2	2.04	0.58
1:A:1157:THR:HG23	1:A:1159:GLU:HG2	1.84	0.57
1:A:860:ASN:C	1:A:861:LYS:HD2	2.24	0.57
1:A:697:MET:SD	1:A:732:LEU:HD21	2.44	0.57
1:A:893:ALA:O	1:A:897:LYS:HG2	2.04	0.57
1:B:697:MET:SD	1:B:732:LEU:HD21	2.44	0.57
1:B:1168:SER:OG	1:B:1169:ARG:N	2.38	0.57
1:A:666:LYS:HE3	1:A:667:LEU:H	1.68	0.57
1:A:685:ASN:O	1:A:689:VAL:HG22	2.05	0.57
1:B:666:LYS:NZ	1:B:671:MET:SD	2.68	0.57
1:B:670:LEU:HD23	1:B:673:LYS:HE3	1.85	0.57
1:B:573:ARG:O	1:B:573:ARG:NH1	2.37	0.57
1:B:685:ASN:O	1:B:689:VAL:HG22	2.05	0.57
1:A:796:ILE:HG13	1:A:797:LYS:HE3	1.87	0.56
1:A:523:TRP:HD1	1:B:959:ASN:CG	2.09	0.56
1:A:660:ILE:HG23	1:A:757:HIS:CE1	2.41	0.56
1:A:861:LYS:HD2	1:A:861:LYS:N	2.20	0.56
1:A:1168:SER:OG	1:A:1169:ARG:N	2.39	0.56
1:B:784:LEU:HD21	1:B:789:ILE:HG12	1.86	0.56
1:B:796:ILE:HG13	1:B:797:LYS:HE3	1.87	0.56
1:B:513:LYS:HE3	1:B:523:TRP:CE2	2.40	0.56
1:A:784:LEU:HD21	1:A:789:ILE:HG12	1.86	0.56
1:B:525:ILE:HA	1:B:528:ALA:HB3	1.88	0.56
1:B:660:ILE:HG23	1:B:757:HIS:CE1	2.41	0.56
1:B:861:LYS:HD2	1:B:861:LYS:N	2.20	0.56
1:A:1124:GLY:HA2	1:A:1189:VAL:HA	1.87	0.56
1:A:368:VAL:HG11	1:A:436:LEU:HD13	1.88	0.55
1:A:775:LEU:HD23	1:A:775:LEU:C	2.27	0.55
1:B:368:VAL:HG11	1:B:436:LEU:HD13	1.88	0.55
1:A:117:ALA:HA	1:A:123:VAL:HG23	1.87	0.55
1:A:573:ARG:O	1:A:573:ARG:NH1	2.37	0.55
1:B:117:ALA:HA	1:B:123:VAL:HG23	1.87	0.55
1:B:972:PHE:O	1:B:976:ARG:NH2	2.40	0.55
1:B:373:THR:HA	1:B:377:LEU:HD23	1.89	0.55
1:B:775:LEU:C	1:B:775:LEU:HD23	2.27	0.55
1:A:525:ILE:HA	1:A:528:ALA:HB3	1.88	0.54
1:A:972:PHE:O	1:A:976:ARG:NH2	2.40	0.54
1:A:1141:THR:OG1	1:A:1190:ARG:NH1	2.39	0.54
1:B:584:LEU:O	1:B:588:LYS:HG2	2.07	0.54
1:A:795:SER:CA	1:A:798:VAL:HB	2.36	0.54
1:A:374:GLN:O	1:A:378:VAL:HG23	2.08	0.54

Continued on next page...

Continued from previous page...

Atom-1	Atom-2	Interatomic distance (Å)	Clash overlap (Å)
1:B:736:ASN:HD21	1:B:778:ILE:HD12	1.73	0.54
1:A:959:ASN:CB	1:B:523:TRP:CD1	2.90	0.54
1:A:863:ILE:O	1:A:867:LEU:HG	2.08	0.54
1:B:673:LYS:O	1:B:677:HIS:ND1	2.42	0.53
1:B:374:GLN:O	1:B:378:VAL:HG23	2.08	0.53
1:A:690:LEU:HD11	1:A:739:PHE:HZ	1.72	0.53
1:B:866:GLU:O	1:B:870:ILE:HG12	2.08	0.53
1:A:373:THR:HA	1:A:377:LEU:HD23	1.89	0.53
1:A:736:ASN:HD21	1:A:778:ILE:HD12	1.73	0.53
1:A:866:GLU:O	1:A:870:ILE:HG12	2.08	0.53
1:B:863:ILE:O	1:B:867:LEU:HG	2.08	0.53
1:A:584:LEU:O	1:A:588:LYS:HG2	2.07	0.53
1:A:1139:ASP:OD1	1:A:1141:THR:OG1	2.26	0.53
1:A:515:ASP:OD1	1:A:516:ARG:N	2.41	0.53
1:A:525:ILE:HD13	1:B:902:ILE:HA	1.90	0.53
1:B:515:ASP:OD1	1:B:516:ARG:N	2.41	0.53
1:A:673:LYS:O	1:A:677:HIS:ND1	2.42	0.53
1:B:1126:LEU:HD12	1:B:1187:PHE:HB2	1.91	0.53
1:A:230:ILE:HD11	1:A:425:MET:HG3	1.91	0.52
1:B:1136:PHE:HB2	1:B:1176:PHE:CZ	2.44	0.52
1:A:525:ILE:HB	1:B:902:ILE:CG1	2.39	0.52
1:A:1136:PHE:HB2	1:A:1176:PHE:CZ	2.44	0.52
1:A:791:ILE:HA	1:A:797:LYS:HZ1	1.74	0.52
1:A:1000:LEU:HB3	1:A:1066:TYR:HB2	1.91	0.52
1:B:612:VAL:O	1:B:616:GLU:HG3	2.10	0.52
1:B:690:LEU:HD11	1:B:739:PHE:HZ	1.72	0.52
1:B:791:ILE:HA	1:B:797:LYS:NZ	2.25	0.52
1:A:136:HIS:CE1	1:B:71:HIS:HA	2.45	0.52
1:A:513:LYS:HE3	1:A:523:TRP:CE2	2.45	0.52
1:A:841:LYS:HD2	1:B:517:PHE:CD2	2.45	0.52
1:B:1000:LEU:HB3	1:B:1066:TYR:HB2	1.91	0.52
1:B:1088:TYR:HE1	1:B:1126:LEU:HB3	1.74	0.52
1:A:525:ILE:HB	1:B:902:ILE:HG12	1.91	0.52
1:B:156:VAL:HG11	1:B:336:ALA:HB2	1.92	0.52
1:B:230:ILE:HD11	1:B:425:MET:HG3	1.91	0.51
1:B:583:ARG:NH2	1:B:621:GLU:O	2.43	0.51
1:A:583:ARG:NH2	1:A:621:GLU:O	2.43	0.51
1:A:648:LEU:HA	1:A:651:LEU:HD12	1.91	0.51
1:A:751:ILE:HG12	1:A:758:TYR:CD2	2.46	0.51
1:A:612:VAL:O	1:A:616:GLU:HG3	2.10	0.51
1:A:791:ILE:HA	1:A:797:LYS:NZ	2.25	0.51

Continued on next page...

Continued from previous page...

Atom-1	Atom-2	Interatomic distance (Å)	Clash overlap (Å)
1:A:821:LEU:O	1:A:825:VAL:HG23	2.11	0.51
1:A:156:VAL:HG11	1:A:336:ALA:HB2	1.92	0.51
1:A:697:MET:O	1:A:700:VAL:HB	2.10	0.51
1:A:751:ILE:HG12	1:A:758:TYR:CE2	2.46	0.51
1:A:908:HIS:HE1	1:A:1119:LEU:HD21	1.75	0.51
1:A:1126:LEU:HD12	1:A:1187:PHE:HB2	1.93	0.51
1:B:789:ILE:HD12	1:B:794:SER:HB3	1.93	0.51
1:B:1158:ARG:H	1:B:1158:ARG:HH11	1.58	0.51
1:A:521:ALA:HB2	1:B:897:LYS:HB3	1.93	0.51
1:B:697:MET:O	1:B:700:VAL:HB	2.10	0.51
1:B:751:ILE:HG12	1:B:758:TYR:CD2	2.46	0.51
1:A:420:ARG:NH1	1:A:481:LEU:O	2.44	0.50
1:A:754:LEU:O	1:A:757:HIS:HB2	2.11	0.50
1:A:789:ILE:HD12	1:A:794:SER:HB3	1.93	0.50
1:B:821:LEU:O	1:B:825:VAL:HG23	2.11	0.50
1:A:194:ASN:ND2	1:A:197:GLU:OE2	2.44	0.50
1:A:516:ARG:HG3	1:A:517:PHE:N	2.26	0.50
1:A:745:ILE:O	1:A:748:ILE:HG22	2.11	0.50
1:A:775:LEU:HD23	1:A:775:LEU:O	2.11	0.50
1:B:745:ILE:O	1:B:748:ILE:HG22	2.11	0.50
1:A:1137:ASN:HA	1:A:1173:LYS:HD2	1.92	0.50
1:B:754:LEU:N	1:B:754:LEU:CD2	2.75	0.50
1:A:754:LEU:N	1:A:754:LEU:CD2	2.75	0.50
1:B:583:ARG:O	1:B:587:LEU:HD23	2.11	0.50
1:B:775:LEU:HD23	1:B:775:LEU:O	2.11	0.50
1:B:784:LEU:HD21	1:B:789:ILE:HG13	1.93	0.50
1:B:420:ARG:NH1	1:B:481:LEU:O	2.44	0.50
1:B:648:LEU:HA	1:B:651:LEU:HD12	1.91	0.50
1:B:795:SER:CA	1:B:798:VAL:HB	2.37	0.50
1:A:798:VAL:O	1:A:799:VAL:HB	2.12	0.50
1:A:517:PHE:CD2	1:B:841:LYS:HD2	2.46	0.50
1:B:194:ASN:ND2	1:B:197:GLU:OE2	2.44	0.50
1:B:777:ASP:HA	1:B:781:ALA:HB3	1.94	0.50
1:B:798:VAL:HG13	1:B:801:LEU:HD12	1.94	0.50
1:B:751:ILE:HG12	1:B:758:TYR:CE2	2.46	0.50
1:B:778:ILE:O	1:B:782:GLU:HB2	2.11	0.50
1:B:753:GLY:O	1:B:754:LEU:HD22	2.12	0.50
1:A:778:ILE:O	1:A:782:GLU:HB2	2.11	0.49
1:B:754:LEU:O	1:B:757:HIS:HB2	2.11	0.49
1:B:798:VAL:O	1:B:799:VAL:HB	2.12	0.49
1:A:798:VAL:HG13	1:A:801:LEU:HD12	1.94	0.49

Continued on next page...

Continued from previous page...

Atom-1	Atom-2	Interatomic distance (Å)	Clash overlap (Å)
1:B:784:LEU:HD22	1:B:796:ILE:HG12	1.93	0.49
1:A:777:ASP:HA	1:A:781:ALA:HB3	1.94	0.49
1:B:516:ARG:HG3	1:B:517:PHE:N	2.27	0.49
1:A:753:GLY:O	1:A:754:LEU:HD22	2.12	0.49
1:A:1139:ASP:H	1:A:1142:LEU:HD12	1.78	0.49
1:A:450:VAL:HG13	1:A:451:ILE:HG12	1.94	0.49
1:A:583:ARG:O	1:A:587:LEU:HD23	2.11	0.49
1:A:746:GLU:OE2	1:A:750:LYS:HG3	2.13	0.49
1:A:784:LEU:HD22	1:A:796:ILE:HG12	1.93	0.49
1:A:684:ILE:HG12	1:A:812:ARG:HH12	1.75	0.49
1:B:903:ARG:HH11	1:B:903:ARG:CG	2.25	0.49
1:B:1124:GLY:HA2	1:B:1189:VAL:HA	1.94	0.49
1:A:302:THR:HG22	1:B:85:CYS:SG	2.52	0.49
1:B:450:VAL:HG13	1:B:451:ILE:HG12	1.94	0.49
1:B:746:GLU:OE2	1:B:750:LYS:HG3	2.13	0.49
1:A:680:PHE:CE2	1:A:746:GLU:HG2	2.48	0.48
1:A:1151:THR:O	1:A:1177:GLN:NE2	2.41	0.48
1:A:794:SER:O	1:A:798:VAL:N	2.46	0.48
1:B:680:PHE:CE2	1:B:746:GLU:HG2	2.48	0.48
1:A:784:LEU:HD21	1:A:789:ILE:HG13	1.94	0.48
1:A:959:ASN:CB	1:B:523:TRP:HD1	2.27	0.48
1:B:903:ARG:HG3	1:B:903:ARG:NH1	2.27	0.48
1:B:209:ASP:O	1:B:211:VAL:N	2.47	0.48
1:A:523:TRP:CD1	1:B:959:ASN:CB	2.96	0.48
1:A:233:GLU:OE2	1:A:399:ARG:NH1	2.44	0.47
1:B:798:VAL:HG12	1:B:799:VAL:N	2.30	0.47
1:A:209:ASP:O	1:A:211:VAL:N	2.47	0.47
1:A:841:LYS:HD3	1:A:841:LYS:HA	1.42	0.47
1:B:577:ASP:N	1:B:577:ASP:OD1	2.47	0.47
1:B:821:LEU:O	1:B:824:VAL:HG22	2.15	0.47
1:A:577:ASP:OD1	1:A:577:ASP:N	2.47	0.47
1:A:798:VAL:HG12	1:A:799:VAL:N	2.30	0.47
1:A:897:LYS:HB3	1:B:521:ALA:HB2	1.96	0.47
1:B:754:LEU:HD22	1:B:754:LEU:N	2.28	0.47
1:B:989:VAL:HB	1:B:1057:VAL:HG12	1.97	0.47
1:A:821:LEU:O	1:A:824:VAL:HG22	2.15	0.47
1:B:861:LYS:HA	1:B:861:LYS:CE	2.18	0.47
1:B:264:ASN:OD1	2:B:1401:CPL:O3	2.33	0.46
1:B:595:TRP:O	1:B:599:GLU:HG2	2.15	0.46
1:B:794:SER:O	1:B:798:VAL:N	2.46	0.46
1:A:575:PHE:O	1:A:579:MET:HG2	2.16	0.46

Continued on next page...

Continued from previous page...

Atom-1	Atom-2	Interatomic distance (Å)	Clash overlap (Å)
1:A:989:VAL:HB	1:A:1057:VAL:HG12	1.97	0.46
3:A:1402:PLM:H72	3:A:1402:PLM:HA1	1.62	0.46
1:B:575:PHE:O	1:B:579:MET:HG2	2.16	0.46
1:A:71:HIS:HA	1:B:136:HIS:CE1	2.51	0.46
1:B:751:ILE:O	1:B:754:LEU:HB2	2.16	0.46
1:A:998:LEU:HD21	1:A:1047:VAL:HG11	1.98	0.46
1:A:1069:THR:HG22	1:A:1071:GLU:OE2	2.15	0.46
1:B:998:LEU:HD21	1:B:1047:VAL:HG11	1.98	0.46
1:B:233:GLU:OE2	1:B:399:ARG:NH1	2.44	0.46
1:B:632:LYS:HG3	1:B:633:LYS:HG2	1.98	0.46
1:B:1069:THR:HG22	1:B:1071:GLU:OE2	2.15	0.46
1:B:1154:ASN:O	1:B:1158:ARG:NH1	2.48	0.46
1:A:600:HIS:NE2	1:A:1115:GLU:OE2	2.48	0.46
1:B:86:LEU:O	1:B:90:ILE:HG13	2.16	0.46
1:B:295:ASN:O	1:B:295:ASN:ND2	2.49	0.46
1:B:600:HIS:NE2	1:B:1115:GLU:OE2	2.48	0.46
1:B:799:VAL:C	1:B:801:LEU:N	2.69	0.46
1:A:86:LEU:O	1:A:90:ILE:HG13	2.16	0.46
1:A:264:ASN:OD1	2:A:1401:CPL:O3	2.33	0.46
1:A:595:TRP:O	1:A:599:GLU:HG2	2.15	0.46
1:B:1119:LEU:HD12	1:B:1119:LEU:HA	1.82	0.46
1:A:209:ASP:OD2	1:A:432:GLY:HA3	2.16	0.45
1:A:754:LEU:HD22	1:A:754:LEU:N	2.28	0.45
1:A:775:LEU:O	1:A:779:ILE:HG22	2.16	0.45
1:B:386:PHE:CZ	1:B:390:ILE:HD11	2.51	0.45
1:B:684:ILE:HG12	1:B:812:ARG:HH12	1.75	0.45
1:A:751:ILE:O	1:A:754:LEU:HB2	2.16	0.45
1:B:269:LEU:HD23	1:B:269:LEU:HA	1.83	0.45
1:A:521:ALA:HB2	1:B:897:LYS:CB	2.46	0.45
1:A:1154:ASN:OD1	1:A:1155:ALA:N	2.49	0.45
1:B:982:PHE:HB2	1:B:1063:VAL:HG13	1.98	0.45
1:A:85:CYS:SG	1:B:302:THR:HG22	2.56	0.45
1:A:295:ASN:O	1:A:295:ASN:ND2	2.49	0.45
1:A:745:ILE:O	1:A:749:VAL:HG23	2.16	0.45
1:B:209:ASP:OD2	1:B:432:GLY:HA3	2.16	0.45
1:A:386:PHE:CZ	1:A:390:ILE:HD11	2.51	0.45
1:A:767:ASP:O	1:A:771:LEU:HD13	2.17	0.45
1:A:814:THR:O	1:A:817:LEU:N	2.50	0.45
1:A:982:PHE:HB2	1:A:1063:VAL:HG13	1.98	0.45
1:B:775:LEU:O	1:B:779:ILE:HG22	2.16	0.45
1:B:1173:LYS:HB3	1:B:1173:LYS:HE3	1.70	0.45

Continued on next page...

Continued from previous page...

Atom-1	Atom-2	Interatomic distance (Å)	Clash overlap (Å)
1:A:531:GLU:N	1:A:531:GLU:CD	2.70	0.45
1:B:841:LYS:HA	1:B:841:LYS:HD3	1.42	0.45
1:B:1149:ASN:O	1:B:1184:PRO:HA	2.17	0.45
1:B:1005:LEU:HB3	1:B:1060:GLU:HB2	1.99	0.45
1:A:515:ASP:OD1	1:A:517:PHE:N	2.42	0.45
1:A:664:LYS:HD2	1:A:664:LYS:HA	1.70	0.45
1:A:632:LYS:HG3	1:A:633:LYS:HG2	1.98	0.44
1:A:799:VAL:C	1:A:801:LEU:N	2.69	0.44
1:B:745:ILE:O	1:B:749:VAL:HG23	2.16	0.44
1:B:798:VAL:HA	1:B:800:LYS:NZ	2.32	0.44
1:B:814:THR:O	1:B:817:LEU:N	2.50	0.44
1:A:580:GLU:OE1	1:A:583:ARG:NH1	2.49	0.44
1:A:798:VAL:HA	1:A:800:LYS:NZ	2.32	0.44
1:B:590:GLU:OE1	1:B:594:TYR:OH	2.27	0.44
1:B:628:VAL:H	1:B:632:LYS:HD3	1.81	0.44
1:B:767:ASP:O	1:B:771:LEU:HD13	2.17	0.44
1:B:1127:VAL:HG12	1:B:1186:LEU:HB3	1.99	0.44
1:B:580:GLU:OE1	1:B:583:ARG:NH1	2.49	0.44
1:B:820:LYS:HA	1:B:820:LYS:HD2	1.78	0.44
1:A:1005:LEU:HB3	1:A:1060:GLU:HB2	1.99	0.44
1:B:531:GLU:N	1:B:531:GLU:CD	2.70	0.44
1:B:671:MET:O	1:B:674:ILE:HG22	2.18	0.44
1:B:750:LYS:O	1:B:754:LEU:HG	2.18	0.44
1:A:628:VAL:H	1:A:632:LYS:HD3	1.81	0.44
1:A:671:MET:O	1:A:674:ILE:HG22	2.18	0.44
1:A:903:ARG:HG3	1:A:903:ARG:NH1	2.27	0.44
1:A:690:LEU:HD12	1:A:739:PHE:CZ	2.47	0.43
1:A:898:THR:HG22	1:A:902:ILE:HD11	1.99	0.43
1:A:1129:LEU:HD12	1:A:1129:LEU:HA	1.90	0.43
1:B:803:ARG:C	1:B:805:LEU:N	2.72	0.43
1:B:1102:LEU:HD23	1:B:1102:LEU:HA	1.86	0.43
1:A:230:ILE:HD13	1:A:230:ILE:HA	1.89	0.43
1:B:731:ALA:O	1:B:734:ILE:N	2.51	0.43
1:B:1148:ILE:HD11	1:B:1187:PHE:HB3	2.00	0.43
1:A:850:VAL:O	1:A:854:ILE:HG22	2.18	0.43
1:B:861:LYS:N	1:B:861:LYS:CD	2.81	0.43
1:A:511:MET:HG3	1:B:1119:LEU:HD13	2.01	0.43
1:B:664:LYS:HA	1:B:664:LYS:HD2	1.70	0.43
1:A:926:GLU:H	1:A:926:GLU:HG2	1.65	0.43
1:A:225:GLN:O	1:A:229:ILE:HG12	2.18	0.43
1:A:269:LEU:HD23	1:A:269:LEU:HA	1.83	0.43

Continued on next page...

Continued from previous page...

Atom-1	Atom-2	Interatomic distance (Å)	Clash overlap (Å)
1:A:750:LYS:O	1:A:754:LEU:HG	2.18	0.43
1:A:942:MET:HA	1:A:942:MET:CE	2.49	0.43
1:B:225:GLN:O	1:B:229:ILE:HG12	2.19	0.43
1:A:731:ALA:O	1:A:734:ILE:N	2.51	0.43
1:A:861:LYS:N	1:A:861:LYS:CD	2.81	0.43
2:A:1401:CPL:H411	2:A:1401:CPL:H442	1.80	0.43
1:B:843:TYR:CD2	1:B:878:VAL:HG21	2.54	0.43
1:B:1121:LEU:HD12	1:B:1121:LEU:HA	1.92	0.43
1:B:1129:LEU:HD12	1:B:1129:LEU:HA	1.86	0.43
1:A:1038:VAL:HG12	1:B:520:ASP:HB3	2.01	0.43
1:A:1120:HIS:HD2	1:A:1123:ARG:HH21	1.64	0.43
1:B:898:THR:HG22	1:B:902:ILE:HD11	1.99	0.43
1:B:1137:ASN:HA	1:B:1173:LYS:HD2	1.99	0.43
1:A:843:TYR:CD2	1:A:878:VAL:HG21	2.54	0.42
1:B:785:LEU:HD23	1:B:785:LEU:H	1.84	0.42
1:B:799:VAL:O	1:B:803:ARG:NH1	2.52	0.42
1:B:805:LEU:O	1:B:806:ARG:C	2.57	0.42
1:B:980:LEU:HD23	1:B:980:LEU:HA	1.88	0.42
1:B:1151:THR:O	1:B:1177:GLN:NE2	2.40	0.42
1:A:903:ARG:NH1	1:A:903:ARG:CG	2.81	0.42
1:A:908:HIS:CE1	1:A:1119:LEU:HD21	2.54	0.42
1:B:636:GLN:OE1	1:B:636:GLN:N	2.44	0.42
1:B:833:LEU:HA	1:B:833:LEU:HD12	1.83	0.42
1:B:1011:LYS:HB3	1:B:1011:LYS:HE3	1.89	0.42
1:A:799:VAL:HG13	1:A:803:ARG:NH2	2.34	0.42
1:B:277:LEU:HD23	1:B:277:LEU:HA	1.88	0.42
1:B:684:ILE:CG1	1:B:812:ARG:NH1	2.75	0.42
1:B:850:VAL:O	1:B:854:ILE:HG22	2.19	0.42
1:B:942:MET:CE	1:B:942:MET:HA	2.49	0.42
1:B:1158:ARG:HD3	1:B:1158:ARG:HA	1.74	0.42
1:A:220:LEU:HD11	1:A:483:MET:O	2.19	0.42
1:A:805:LEU:O	1:A:806:ARG:C	2.57	0.42
1:B:1124:GLY:CA	1:B:1189:VAL:HA	2.49	0.42
1:A:627:LEU:HD23	1:A:843:TYR:CD1	2.54	0.42
1:A:1138:ILE:HG22	1:B:1169:ARG:HH22	1.84	0.42
1:B:230:ILE:HD13	1:B:230:ILE:HA	1.89	0.42
1:B:799:VAL:HG13	1:B:803:ARG:NH2	2.34	0.42
1:B:1152:ALA:HB3	1:B:1161:ILE:HG13	2.02	0.42
1:A:675:CYS:SG	1:A:754:LEU:HD21	2.60	0.42
1:A:731:ALA:O	1:A:734:ILE:HB	2.19	0.42
1:A:803:ARG:C	1:A:805:LEU:N	2.71	0.42

Continued on next page...

Continued from previous page...

Atom-1	Atom-2	Interatomic distance (Å)	Clash overlap (Å)
1:A:1003:SER:HA	1:A:1038:VAL:HG22	2.02	0.42
1:B:627:LEU:HD23	1:B:843:TYR:CD1	2.54	0.42
1:B:731:ALA:O	1:B:734:ILE:HB	2.19	0.42
1:B:462:ILE:HD13	1:B:462:ILE:HA	1.84	0.42
1:B:573:ARG:HA	1:B:573:ARG:HD2	1.87	0.42
1:B:675:CYS:SG	1:B:754:LEU:HD21	2.60	0.42
1:B:969:LEU:HD11	1:B:1086:LEU:HD22	2.02	0.42
3:B:1402:PLM:H72	3:B:1402:PLM:HA1	1.62	0.42
1:A:513:LYS:HG2	1:A:523:TRP:CZ2	2.55	0.42
1:A:799:VAL:O	1:A:803:ARG:NH1	2.52	0.42
1:A:969:LEU:HD11	1:A:1086:LEU:HD22	2.02	0.42
1:B:220:LEU:HD11	1:B:483:MET:O	2.19	0.42
1:A:813:LEU:O	1:A:814:THR:C	2.58	0.42
1:B:757:HIS:O	1:B:758:TYR:C	2.58	0.42
1:B:791:ILE:HA	1:B:797:LYS:HZ1	1.85	0.41
1:B:813:LEU:O	1:B:814:THR:C	2.58	0.41
1:B:1003:SER:HA	1:B:1038:VAL:HG22	2.01	0.41
1:A:523:TRP:HD1	1:B:959:ASN:CB	2.34	0.41
1:A:695:ILE:HD12	1:A:695:ILE:HA	1.89	0.41
1:A:76:LYS:HB2	1:A:76:LYS:HE3	1.81	0.41
1:A:660:ILE:HD12	1:A:757:HIS:CD2	2.55	0.41
1:A:757:HIS:O	1:A:758:TYR:C	2.58	0.41
1:A:1145:VAL:HG23	1:A:1188:VAL:HG12	2.01	0.41
1:B:688:ILE:HD11	1:B:812:ARG:HD2	2.02	0.41
1:A:803:ARG:O	1:A:805:LEU:N	2.53	0.41
1:A:897:LYS:CB	1:B:521:ALA:HB2	2.51	0.41
1:B:887:ARG:HD3	1:B:1061:THR:HG21	2.03	0.41
1:A:636:GLN:H	1:A:636:GLN:CD	2.23	0.41
1:A:1011:LYS:HB3	1:A:1011:LYS:HE3	1.89	0.41
1:B:660:ILE:HD12	1:B:757:HIS:CD2	2.55	0.41
1:B:795:SER:C	1:B:798:VAL:H	2.24	0.41
2:B:1401:CPL:H352	2:B:1401:CPL:H381	1.81	0.41
1:A:445:LEU:HD23	1:A:445:LEU:HA	1.88	0.41
1:A:520:ASP:HB3	1:B:1038:VAL:HG12	2.03	0.41
1:A:588:LYS:HG2	1:A:588:LYS:H	1.66	0.41
1:A:803:ARG:HD2	1:A:806:ARG:HH12	1.86	0.41
1:B:690:LEU:HD12	1:B:739:PHE:CZ	2.47	0.41
1:A:620:ASP:OD1	1:A:620:ASP:N	2.54	0.41
1:A:627:LEU:HD23	1:A:843:TYR:CE1	2.56	0.41
1:A:795:SER:C	1:A:798:VAL:H	2.24	0.41
1:A:1150:GLY:O	1:A:1163:SER:OG	2.24	0.41

Continued on next page...

Continued from previous page...

Atom-1	Atom-2	Interatomic distance (Å)	Clash overlap (Å)
1:B:217:LEU:HD23	1:B:217:LEU:HA	1.96	0.41
1:B:293:ILE:O	1:B:939:LYS:NZ	2.38	0.41
1:B:802:PHE:CD1	1:B:802:PHE:N	2.88	0.41
1:B:803:ARG:HD2	1:B:806:ARG:HH12	1.86	0.41
1:B:926:GLU:H	1:B:926:GLU:HG2	1.65	0.41
1:A:525:ILE:HG13	1:A:526:ALA:N	2.36	0.41
1:A:794:SER:O	1:A:798:VAL:HG23	2.20	0.41
1:B:627:LEU:HD23	1:B:843:TYR:CE1	2.56	0.41
1:B:908:HIS:HE1	1:B:1119:LEU:HD21	1.87	0.41
1:A:159:PHE:HE1	1:A:166:VAL:HG11	1.86	0.40
1:A:618:ALA:HB3	1:A:626:ILE:HG22	2.03	0.40
1:A:644:LEU:HD12	1:A:645:LYS:H	1.86	0.40
1:A:138:LEU:HD23	1:A:142:PHE:HD2	1.86	0.40
1:B:310:LEU:HD23	1:B:310:LEU:HA	1.92	0.40
1:B:411:SER:OG	1:B:412:ARG:NH2	2.54	0.40
1:B:803:ARG:O	1:B:805:LEU:N	2.53	0.40
1:A:1161:ILE:HD13	1:A:1161:ILE:HA	1.96	0.40
1:B:138:LEU:HD23	1:B:142:PHE:HD2	1.86	0.40
1:A:293:ILE:O	1:A:939:LYS:NZ	2.38	0.40
1:A:1174:LEU:HD12	1:A:1175:THR:N	2.36	0.40
1:B:588:LYS:HG2	1:B:588:LYS:H	1.66	0.40
1:B:757:HIS:HA	1:B:760:VAL:HB	2.03	0.40
1:A:644:LEU:HD12	1:A:645:LYS:N	2.37	0.40
1:A:798:VAL:C	1:A:800:LYS:H	2.25	0.40
1:A:852:LYS:HE2	1:A:1105:GLU:OE1	2.22	0.40
1:A:887:ARG:HD3	1:A:1061:THR:HG21	2.03	0.40
1:A:1149:ASN:O	1:A:1184:PRO:HA	2.21	0.40
1:B:502:HIS:NE2	1:B:531:GLU:HB2	2.36	0.40
1:B:690:LEU:HD11	1:B:739:PHE:CZ	2.54	0.40
1:B:1037:THR:OG1	1:B:1038:VAL:N	2.54	0.40

There are no symmetry-related clashes.

5.3 Torsion angles [\(i\)](#)

5.3.1 Protein backbone [\(i\)](#)

In the following table, the Percentiles column shows the percent Ramachandran outliers of the chain as a percentile score with respect to all PDB entries followed by that with respect to all EM entries.

The Analysed column shows the number of residues for which the backbone conformation was analysed, and the total number of residues.

Mol	Chain	Analysed	Favoured	Allowed	Outliers	Percentiles	
1	A	1043/1331 (78%)	981 (94%)	61 (6%)	1 (0%)	51	83
1	B	1043/1331 (78%)	982 (94%)	60 (6%)	1 (0%)	51	83
All	All	2086/2662 (78%)	1963 (94%)	121 (6%)	2 (0%)	54	83

All (2) Ramachandran outliers are listed below:

Mol	Chain	Res	Type
1	A	798	VAL
1	B	798	VAL

5.3.2 Protein sidechains [i](#)

In the following table, the Percentiles column shows the percent sidechain outliers of the chain as a percentile score with respect to all PDB entries followed by that with respect to all EM entries.

The Analysed column shows the number of residues for which the sidechain conformation was analysed, and the total number of residues.

Mol	Chain	Analysed	Rotameric	Outliers	Percentiles	
1	A	904/1138 (79%)	842 (93%)	62 (7%)	15	48
1	B	904/1138 (79%)	843 (93%)	61 (7%)	16	49
All	All	1808/2276 (79%)	1685 (93%)	123 (7%)	19	48

All (123) residues with a non-rotameric sidechain are listed below:

Mol	Chain	Res	Type
1	A	92	ARG
1	A	152	PHE
1	A	163	PHE
1	A	200	MET
1	A	220	LEU
1	A	224	LYS
1	A	237	ASN
1	A	257	LEU
1	A	296	ASP
1	A	319	LEU
1	A	382	LYS

Continued on next page...

Continued from previous page...

Mol	Chain	Res	Type
1	A	412	ARG
1	A	485	ASP
1	A	514	SER
1	A	516	ARG
1	A	525	ILE
1	A	602	MET
1	A	635	TRP
1	A	641	TYR
1	A	644	LEU
1	A	654	GLU
1	A	655	LYS
1	A	656	LYS
1	A	662	MET
1	A	669	LYS
1	A	675	CYS
1	A	678	MET
1	A	691	ASN
1	A	696	ILE
1	A	697	MET
1	A	698	GLU
1	A	699	PHE
1	A	702	GLN
1	A	737	TYR
1	A	750	LYS
1	A	769	PHE
1	A	788	SER
1	A	797	LYS
1	A	800	LYS
1	A	801	LEU
1	A	803	ARG
1	A	810	MET
1	A	841	LYS
1	A	849	GLU
1	A	859	ASP
1	A	900	GLN
1	A	909	SER
1	A	923	ASP
1	A	925	MET
1	A	942	MET
1	A	963	LEU
1	A	966	ASP
1	A	1092	ARG

Continued on next page...

Continued from previous page...

Mol	Chain	Res	Type
1	A	1104	MET
1	A	1105	GLU
1	A	1114	GLN
1	A	1119	LEU
1	A	1133	HIS
1	A	1137	ASN
1	A	1139	ASP
1	A	1162	ARG
1	A	1176	PHE
1	B	92	ARG
1	B	152	PHE
1	B	163	PHE
1	B	200	MET
1	B	220	LEU
1	B	224	LYS
1	B	237	ASN
1	B	257	LEU
1	B	296	ASP
1	B	319	LEU
1	B	382	LYS
1	B	412	ARG
1	B	485	ASP
1	B	516	ARG
1	B	525	ILE
1	B	602	MET
1	B	635	TRP
1	B	641	TYR
1	B	644	LEU
1	B	654	GLU
1	B	655	LYS
1	B	656	LYS
1	B	662	MET
1	B	669	LYS
1	B	675	CYS
1	B	678	MET
1	B	691	ASN
1	B	696	ILE
1	B	697	MET
1	B	698	GLU
1	B	699	PHE
1	B	702	GLN
1	B	732	LEU

Continued on next page...

Continued from previous page...

Mol	Chain	Res	Type
1	B	737	TYR
1	B	750	LYS
1	B	769	PHE
1	B	788	SER
1	B	797	LYS
1	B	800	LYS
1	B	801	LEU
1	B	803	ARG
1	B	810	MET
1	B	841	LYS
1	B	849	GLU
1	B	857	MET
1	B	859	ASP
1	B	900	GLN
1	B	909	SER
1	B	923	ASP
1	B	925	MET
1	B	942	MET
1	B	963	LEU
1	B	966	ASP
1	B	1092	ARG
1	B	1104	MET
1	B	1105	GLU
1	B	1114	GLN
1	B	1118	LYS
1	B	1119	LEU
1	B	1133	HIS
1	B	1162	ARG

Sometimes sidechains can be flipped to improve hydrogen bonding and reduce clashes. All (12) such sidechains are listed below:

Mol	Chain	Res	Type
1	A	136	HIS
1	A	691	ASN
1	A	736	ASN
1	A	908	HIS
1	A	1120	HIS
1	A	1156	HIS
1	B	136	HIS
1	B	691	ASN
1	B	736	ASN
1	B	908	HIS

Continued on next page...

Continued from previous page...

Mol	Chain	Res	Type
1	B	1120	HIS
1	B	1172	HIS

5.3.3 RNA [i](#)

There are no RNA molecules in this entry.

5.4 Non-standard residues in protein, DNA, RNA chains [i](#)

There are no non-standard protein/DNA/RNA residues in this entry.

5.5 Carbohydrates [i](#)

There are no monosaccharides in this entry.

5.6 Ligand geometry [i](#)

4 ligands are modelled in this entry.

In the following table, the Counts columns list the number of bonds (or angles) for which Mogul statistics could be retrieved, the number of bonds (or angles) that are observed in the model and the number of bonds (or angles) that are defined in the Chemical Component Dictionary. The Link column lists molecule types, if any, to which the group is linked. The Z score for a bond length (or angle) is the number of standard deviations the observed value is removed from the expected value. A bond length (or angle) with $|Z| > 2$ is considered an outlier worth inspection. RMSZ is the root-mean-square of all Z scores of the bond lengths (or angles).

Mol	Type	Chain	Res	Link	Bond lengths			Bond angles		
					Counts	RMSZ	# Z > 2	Counts	RMSZ	# Z > 2
3	PLM	B	1402	-	17,17,17	0.93	1 (5%)	17,17,17	0.75	2 (11%)
2	CPL	A	1401	-	42,42,51	1.16	3 (7%)	48,50,59	1.16	3 (6%)
3	PLM	A	1402	-	17,17,17	0.93	1 (5%)	17,17,17	0.76	2 (11%)
2	CPL	B	1401	-	42,42,51	1.16	3 (7%)	48,50,59	1.16	3 (6%)

In the following table, the Chirals column lists the number of chiral outliers, the number of chiral centers analysed, the number of these observed in the model and the number defined in the Chemical Component Dictionary. Similar counts are reported in the Torsion and Rings columns. '-' means no outliers of that kind were identified.

Mol	Type	Chain	Res	Link	Chirals	Torsions	Rings
3	PLM	B	1402	-	-	7/15/15/15	-
2	CPL	A	1401	-	-	18/46/46/55	-
3	PLM	A	1402	-	-	7/15/15/15	-
2	CPL	B	1401	-	-	18/46/46/55	-

All (8) bond length outliers are listed below:

Mol	Chain	Res	Type	Atoms	Z	Observed(Å)	Ideal(Å)
2	A	1401	CPL	O3-C11	3.06	1.42	1.33
2	B	1401	CPL	O3-C11	3.04	1.42	1.33
3	B	1402	PLM	C2-C1	2.95	1.57	1.50
3	A	1402	PLM	C2-C1	2.93	1.57	1.50
2	B	1401	CPL	O2-C31	2.90	1.42	1.34
2	A	1401	CPL	O2-C31	2.90	1.42	1.34
2	A	1401	CPL	O2-C2	-2.42	1.40	1.46
2	B	1401	CPL	O2-C2	-2.40	1.40	1.46

All (10) bond angle outliers are listed below:

Mol	Chain	Res	Type	Atoms	Z	Observed(°)	Ideal(°)
2	B	1401	CPL	O2-C31-C32	3.89	119.89	111.50
2	A	1401	CPL	O2-C31-C32	3.89	119.88	111.50
2	A	1401	CPL	C41-C40-C39	3.49	153.03	123.57
2	B	1401	CPL	C41-C40-C39	3.49	152.99	123.57
2	B	1401	CPL	O3-C11-C12	2.66	120.26	111.91
2	A	1401	CPL	O3-C11-C12	2.66	120.25	111.91
3	A	1402	PLM	O1-C1-O2	2.27	128.95	123.30
3	B	1402	PLM	O1-C1-O2	2.24	128.89	123.30
3	A	1402	PLM	O2-C1-C2	-2.03	116.55	123.08
3	B	1402	PLM	O2-C1-C2	-2.02	116.61	123.08

There are no chirality outliers.

All (50) torsion outliers are listed below:

Mol	Chain	Res	Type	Atoms
2	A	1401	CPL	O4P-C4-C5-N
2	A	1401	CPL	C4-O4P-P-O1P
2	A	1401	CPL	C4-O4P-P-O2P
2	A	1401	CPL	C4-O4P-P-O3P
2	B	1401	CPL	O4P-C4-C5-N
2	B	1401	CPL	C4-O4P-P-O1P

Continued on next page...

Continued from previous page...

Mol	Chain	Res	Type	Atoms
2	B	1401	CPL	C4-O4P-P-O2P
2	B	1401	CPL	C4-O4P-P-O3P
2	A	1401	CPL	O11-C11-O3-C3
2	B	1401	CPL	O11-C11-O3-C3
2	A	1401	CPL	C12-C11-O3-C3
2	B	1401	CPL	C12-C11-O3-C3
2	A	1401	CPL	C11-C12-C13-C14
2	B	1401	CPL	C11-C12-C13-C14
3	A	1402	PLM	C7-C8-C9-CA
3	B	1402	PLM	C7-C8-C9-CA
3	A	1402	PLM	CA-CB-CC-CD
3	B	1402	PLM	CA-CB-CC-CD
2	A	1401	CPL	C32-C33-C34-C35
2	B	1401	CPL	C32-C33-C34-C35
3	B	1402	PLM	C8-C9-CA-CB
3	A	1402	PLM	C8-C9-CA-CB
2	A	1401	CPL	C34-C35-C36-C37
2	B	1401	CPL	C34-C35-C36-C37
3	A	1402	PLM	C4-C5-C6-C7
3	B	1402	PLM	C4-C5-C6-C7
3	A	1402	PLM	C1-C2-C3-C4
3	B	1402	PLM	C1-C2-C3-C4
3	A	1402	PLM	C6-C7-C8-C9
3	B	1402	PLM	C6-C7-C8-C9
2	A	1401	CPL	C13-C14-C15-C16
2	B	1401	CPL	C13-C14-C15-C16
2	A	1401	CPL	C14-C15-C16-C17
2	B	1401	CPL	C14-C15-C16-C17
2	A	1401	CPL	C12-C13-C14-C15
2	B	1401	CPL	C12-C13-C14-C15
2	A	1401	CPL	C1-C2-C3-O3
2	B	1401	CPL	C1-C2-C3-O3
2	A	1401	CPL	O2-C2-C3-O3
2	B	1401	CPL	O2-C2-C3-O3
2	A	1401	CPL	C2-C1-O3P-P
2	B	1401	CPL	C2-C1-O3P-P
2	A	1401	CPL	C1-O3P-P-O2P
2	B	1401	CPL	C1-O3P-P-O2P
2	A	1401	CPL	C35-C36-C37-C38
2	B	1401	CPL	C35-C36-C37-C38
3	A	1402	PLM	C5-C6-C7-C8
3	B	1402	PLM	C5-C6-C7-C8

Continued on next page...

Continued from previous page...

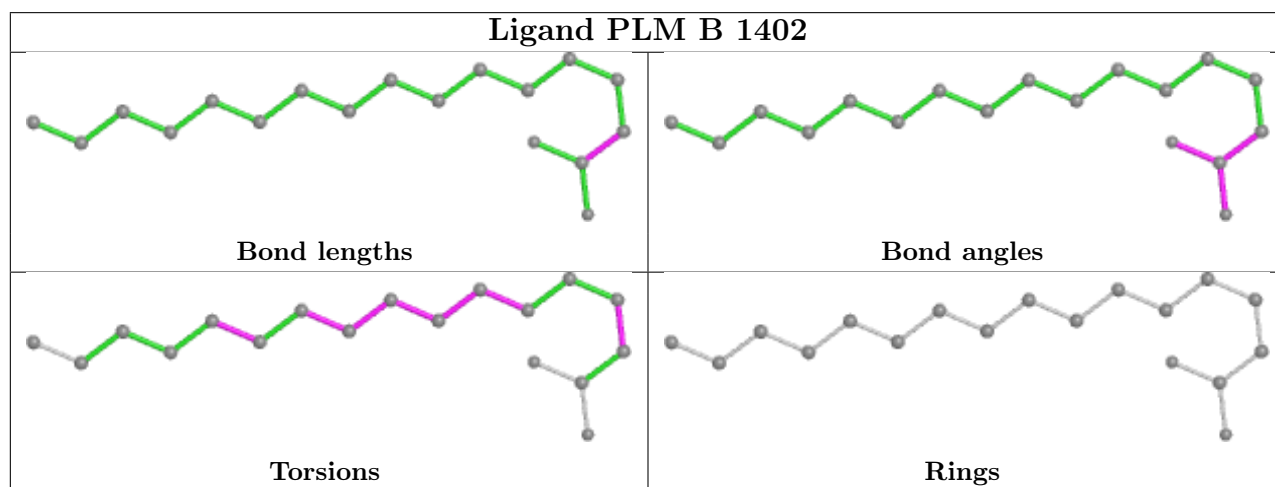
Mol	Chain	Res	Type	Atoms
2	A	1401	CPL	C5-C4-O4P-P
2	B	1401	CPL	C5-C4-O4P-P

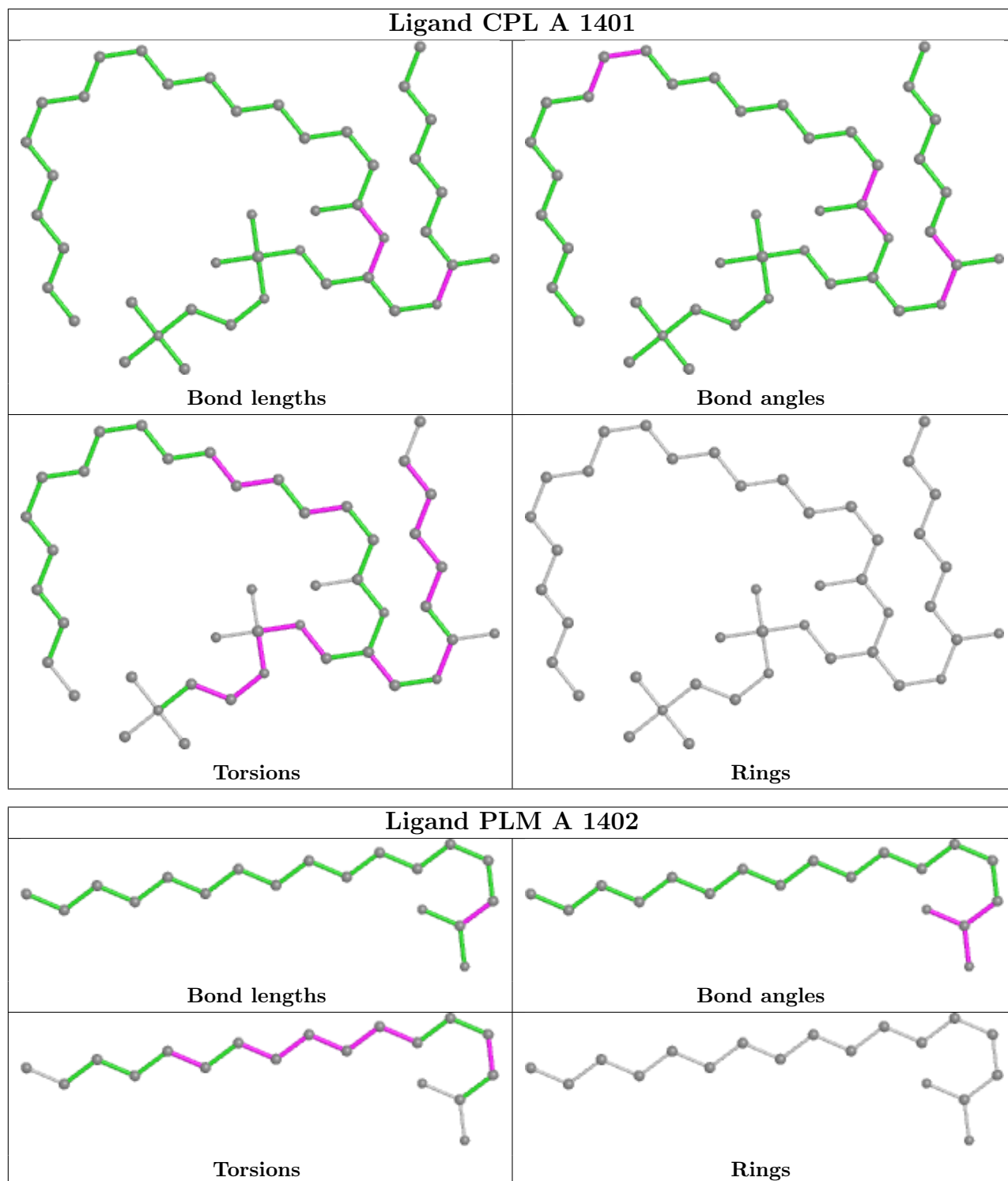
There are no ring outliers.

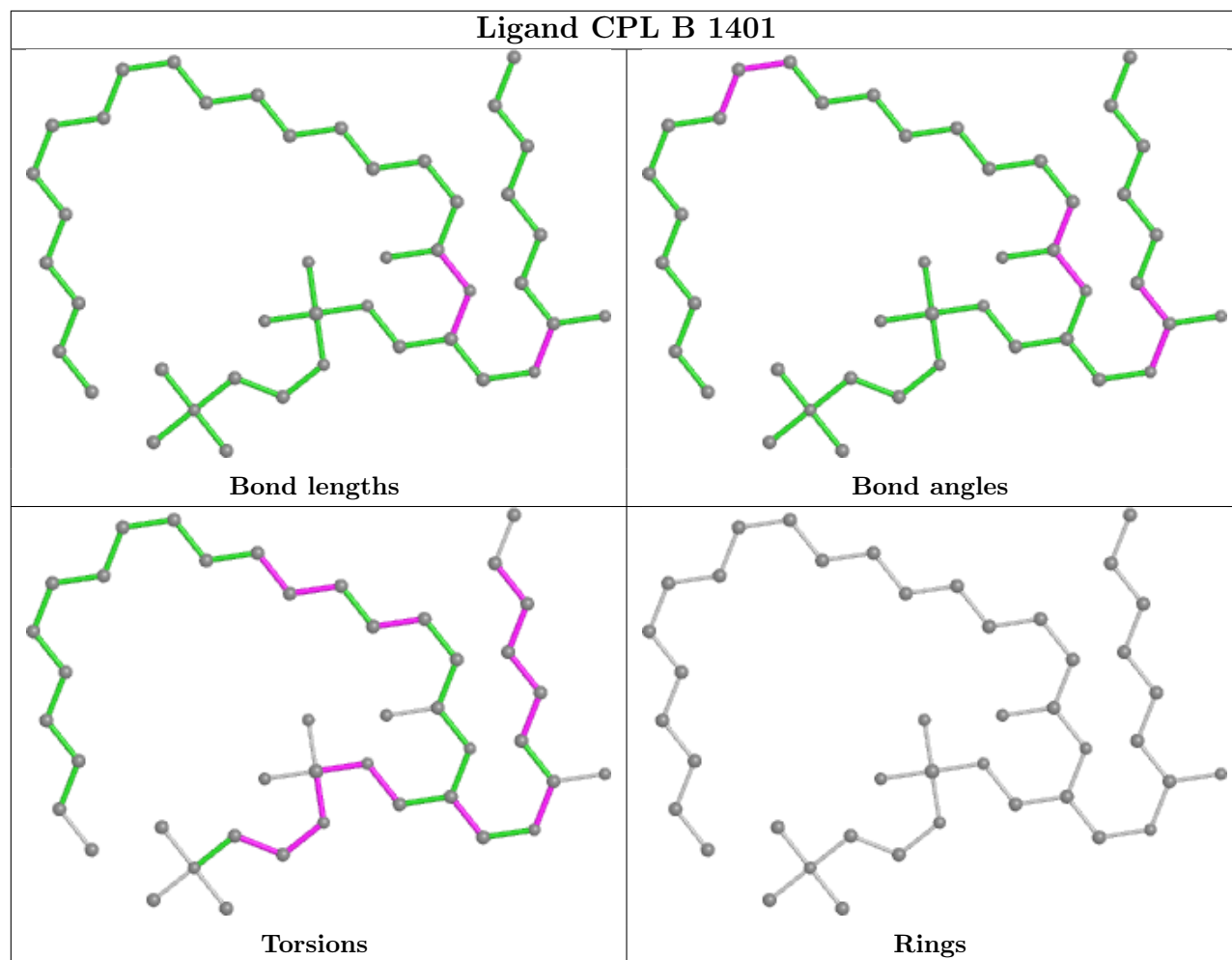
4 monomers are involved in 6 short contacts:

Mol	Chain	Res	Type	Clashes	Symm-Clashes
3	B	1402	PLM	1	0
2	A	1401	CPL	2	0
3	A	1402	PLM	1	0
2	B	1401	CPL	2	0

The following is a two-dimensional graphical depiction of Mogul quality analysis of bond lengths, bond angles, torsion angles, and ring geometry for all instances of the Ligand of Interest. In addition, ligands with molecular weight > 250 and outliers as shown on the validation Tables will also be included. For torsion angles, if less than 5% of the Mogul distribution of torsion angles is within 10 degrees of the torsion angle in question, then that torsion angle is considered an outlier. Any bond that is central to one or more torsion angles identified as an outlier by Mogul will be highlighted in the graph. For rings, the root-mean-square deviation (RMSD) between the ring in question and similar rings identified by Mogul is calculated over all ring torsion angles. If the average RMSD is greater than 60 degrees and the minimal RMSD between the ring in question and any Mogul-identified rings is also greater than 60 degrees, then that ring is considered an outlier. The outliers are highlighted in purple. The color gray indicates Mogul did not find sufficient equivalents in the CSD to analyse the geometry.







5.7 Other polymers [i](#)

There are no such residues in this entry.

5.8 Polymer linkage issues [i](#)

There are no chain breaks in this entry.

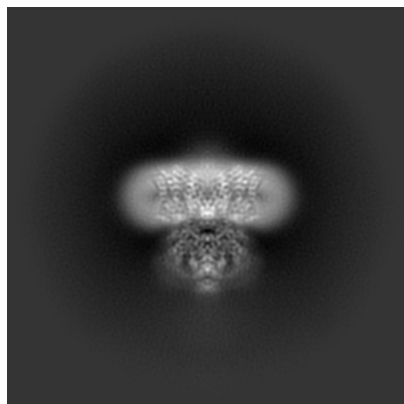
6 Map visualisation [i](#)

This section contains visualisations of the EMDB entry EMD-17182. These allow visual inspection of the internal detail of the map and identification of artifacts.

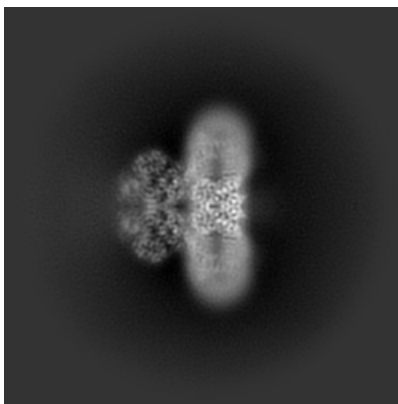
Images derived from a raw map, generated by summing the deposited half-maps, are presented below the corresponding image components of the primary map to allow further visual inspection and comparison with those of the primary map.

6.1 Orthogonal projections [i](#)

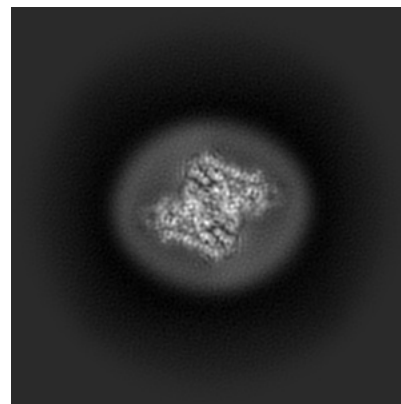
6.1.1 Primary map



X

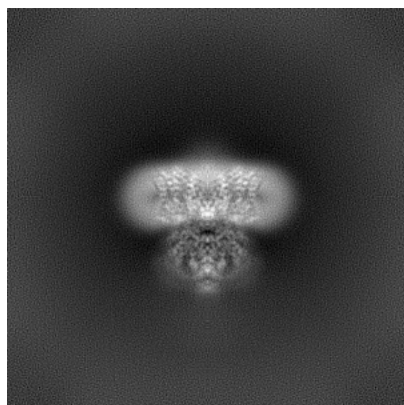


Y

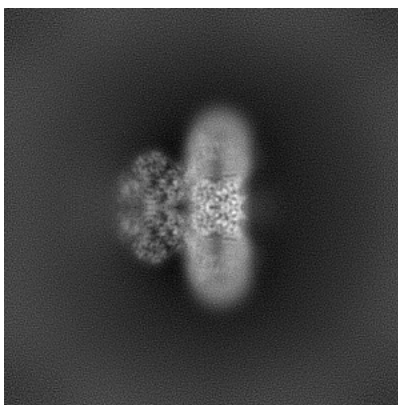


Z

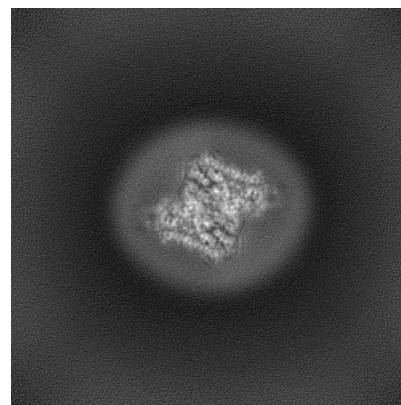
6.1.2 Raw map



X



Y

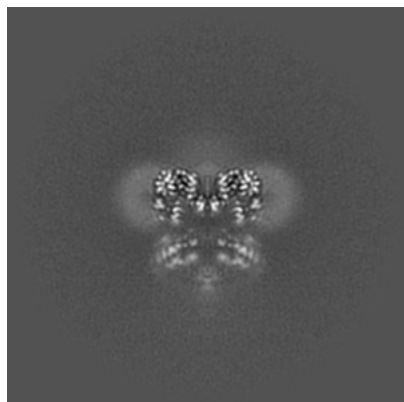


Z

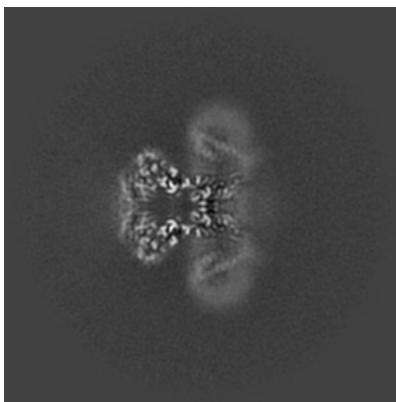
The images above show the map projected in three orthogonal directions.

6.2 Central slices [i](#)

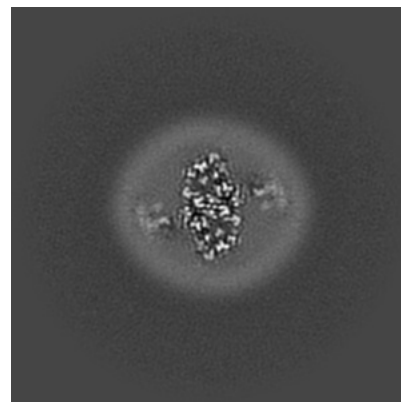
6.2.1 Primary map



X Index: 170

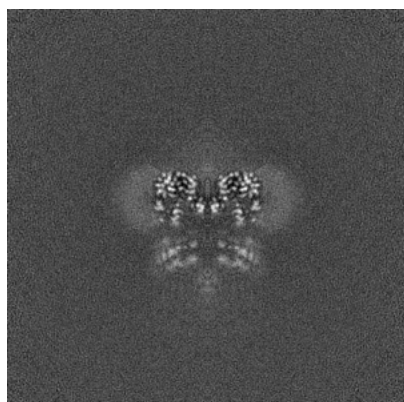


Y Index: 170

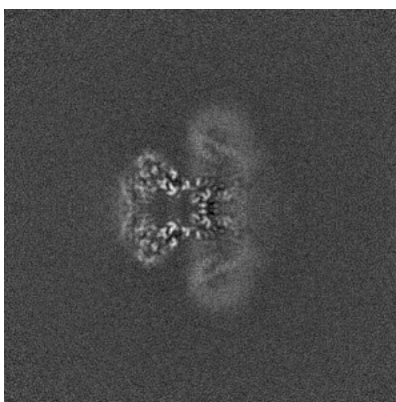


Z Index: 170

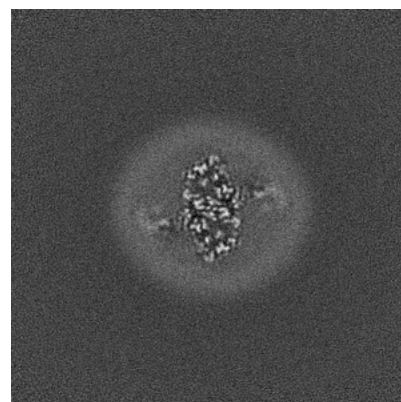
6.2.2 Raw map



X Index: 170



Y Index: 170

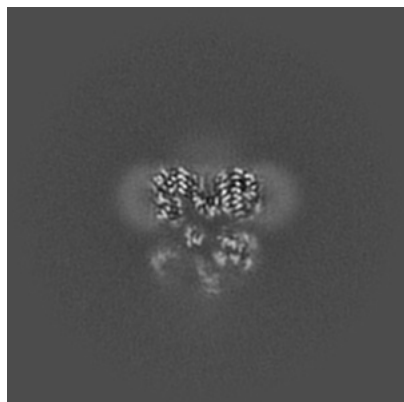


Z Index: 170

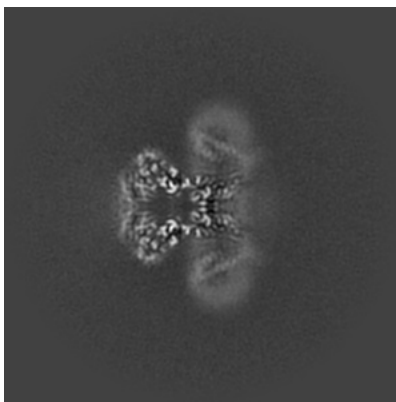
The images above show central slices of the map in three orthogonal directions.

6.3 Largest variance slices [i](#)

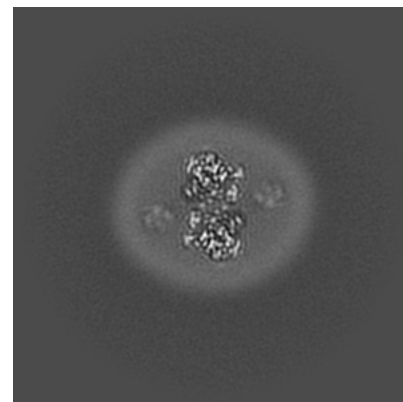
6.3.1 Primary map



X Index: 174

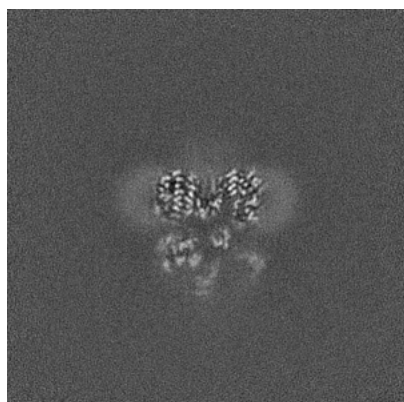


Y Index: 170

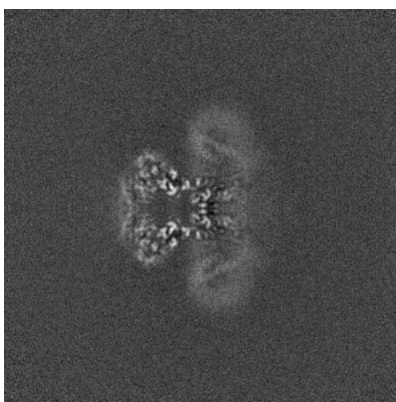


Z Index: 191

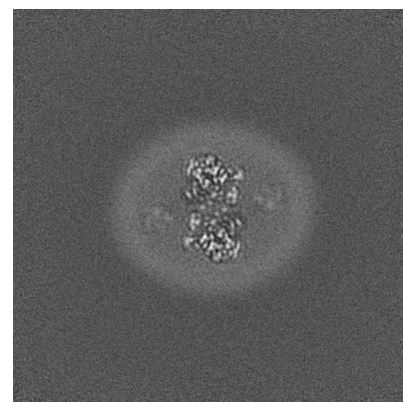
6.3.2 Raw map



X Index: 166



Y Index: 170

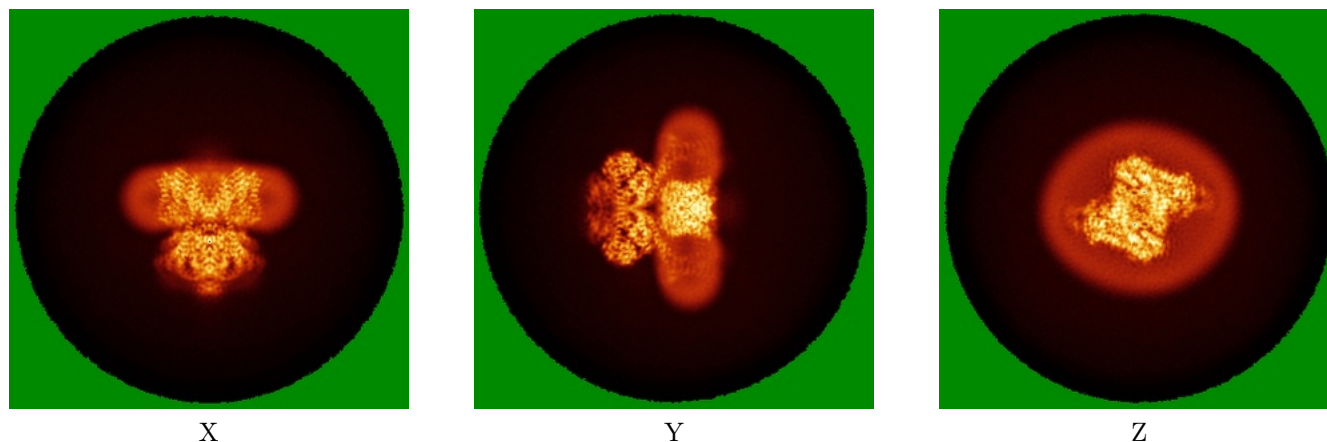


Z Index: 191

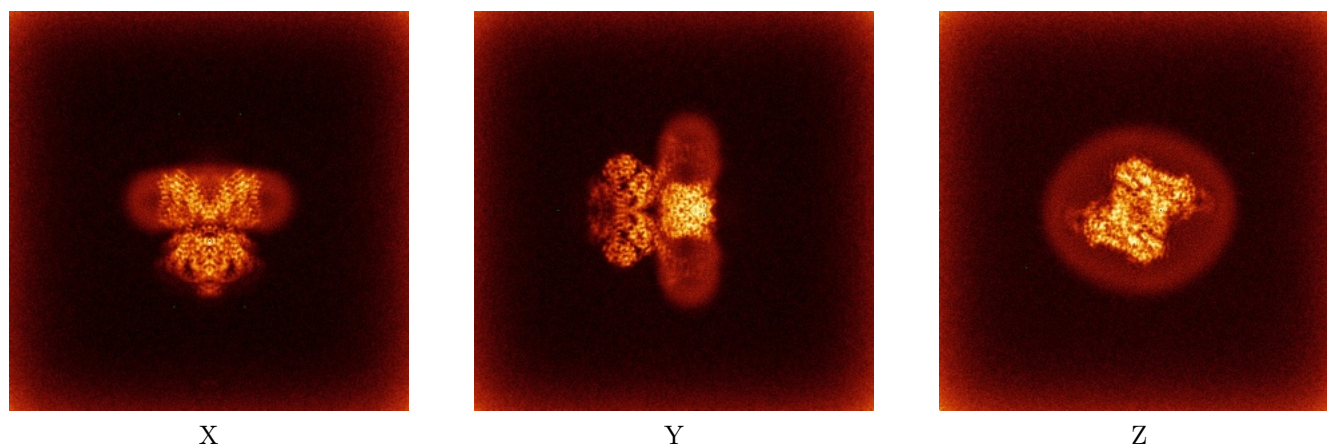
The images above show the largest variance slices of the map in three orthogonal directions.

6.4 Orthogonal standard-deviation projections (False-color) [i](#)

6.4.1 Primary map



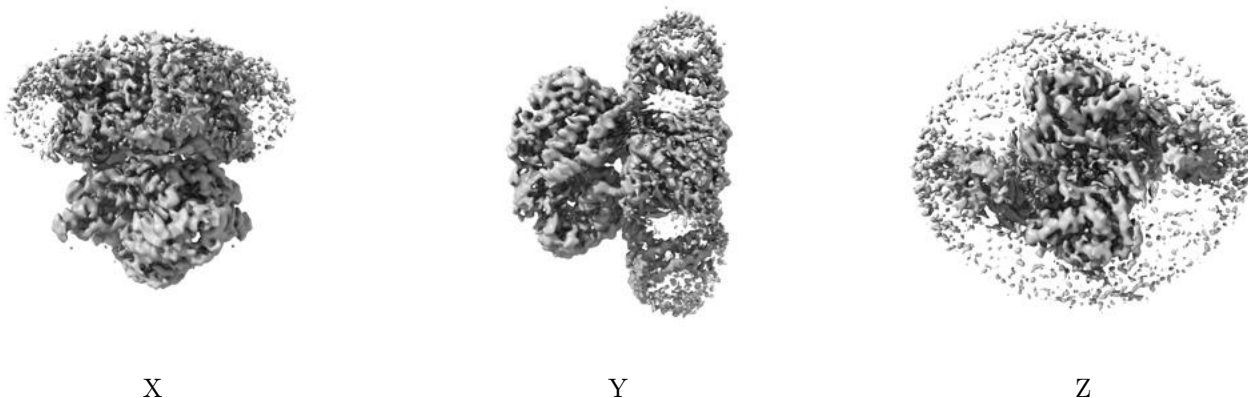
6.4.2 Raw map



The images above show the map standard deviation projections with false color in three orthogonal directions. Minimum values are shown in green, max in blue, and dark to light orange shades represent small to large values respectively.

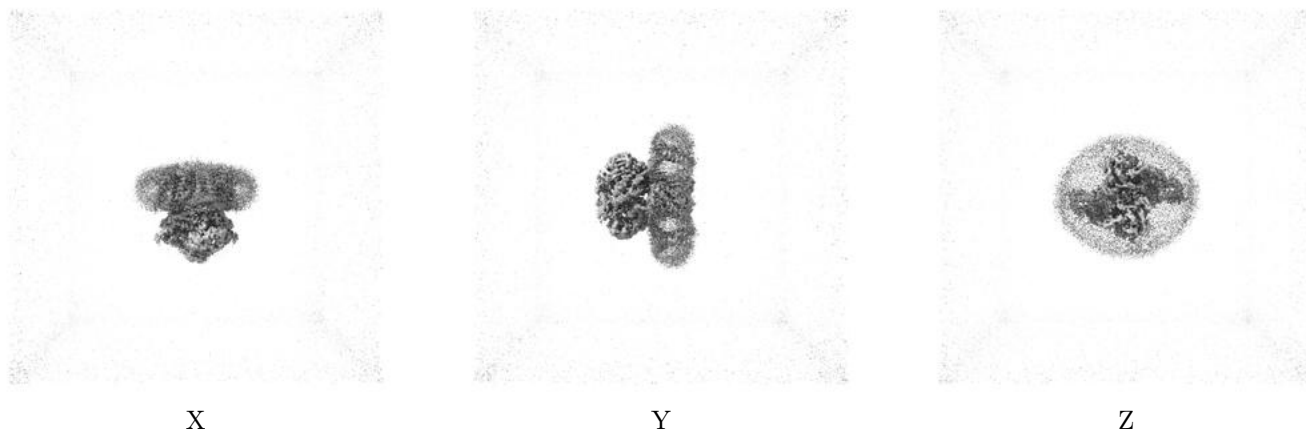
6.5 Orthogonal surface views [i](#)

6.5.1 Primary map



The images above show the 3D surface view of the map at the recommended contour level 0.08. These images, in conjunction with the slice images, may facilitate assessment of whether an appropriate contour level has been provided.

6.5.2 Raw map



These images show the 3D surface of the raw map. The raw map's contour level was selected so that its surface encloses the same volume as the primary map does at its recommended contour level.

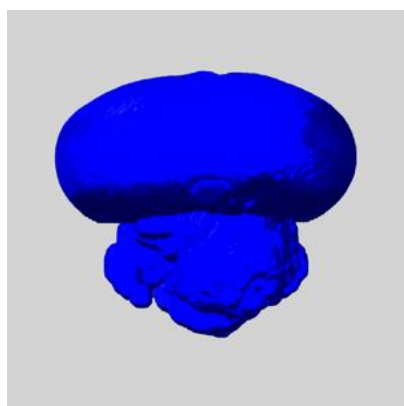
6.6 Mask visualisation [i](#)

This section shows the 3D surface view of the primary map at 50% transparency overlaid with the specified mask at 0% transparency

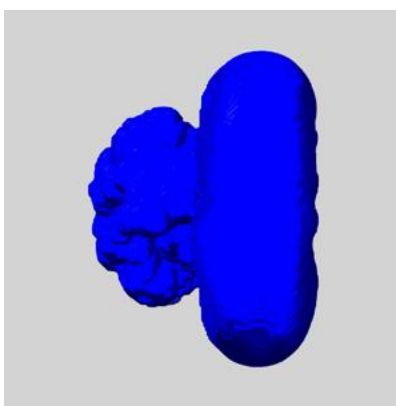
A mask typically either:

- Encompasses the whole structure
- Separates out a domain, a functional unit, a monomer or an area of interest from a larger structure

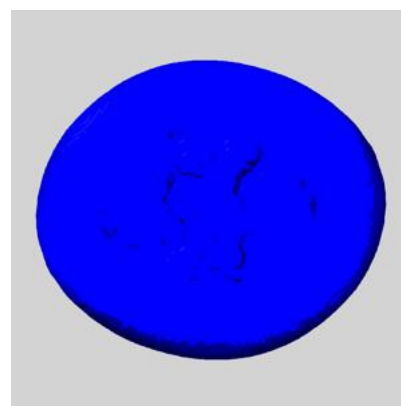
6.6.1 emd_17182_msk_1.map [i](#)



X



Y

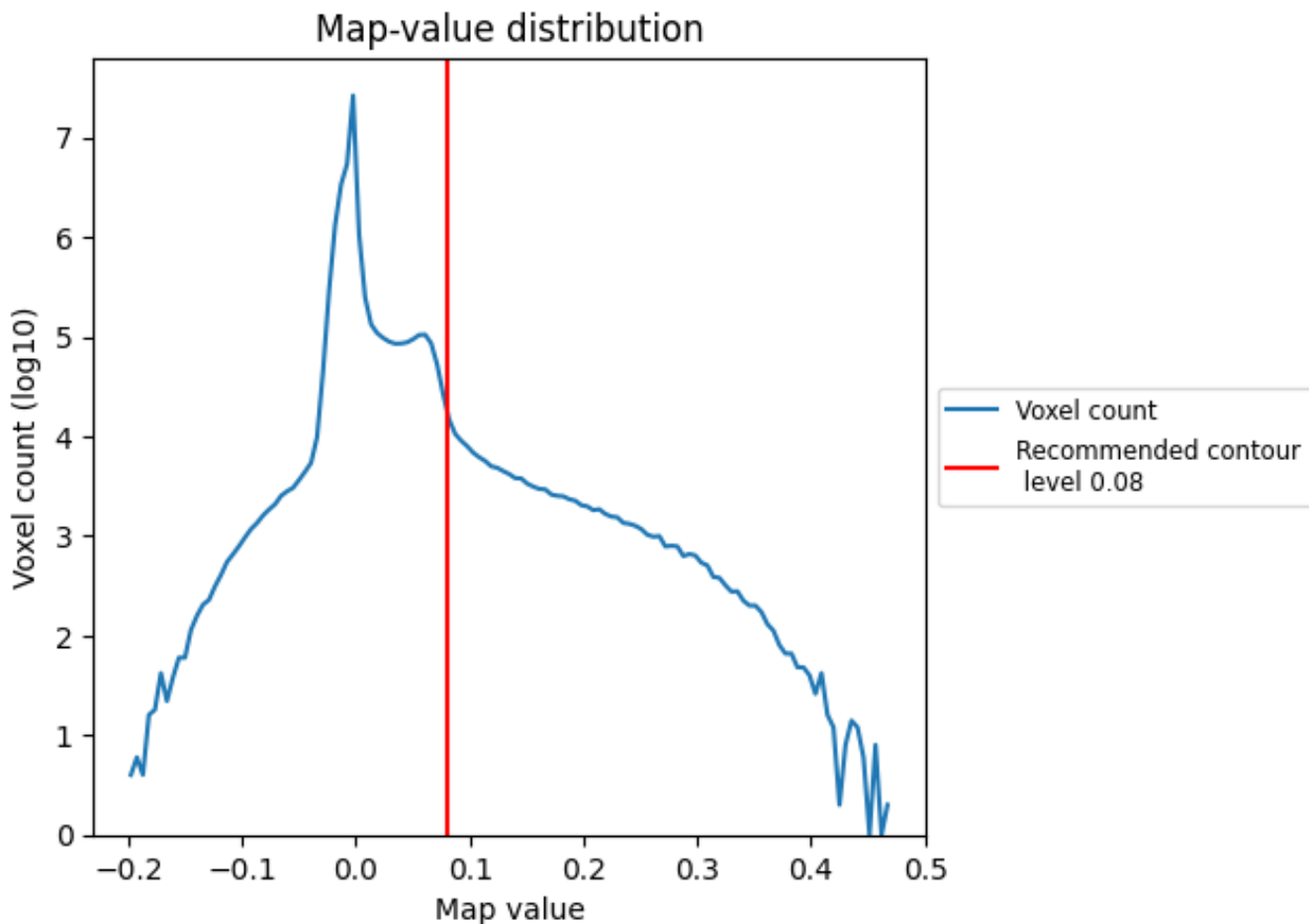


Z

7 Map analysis [i](#)

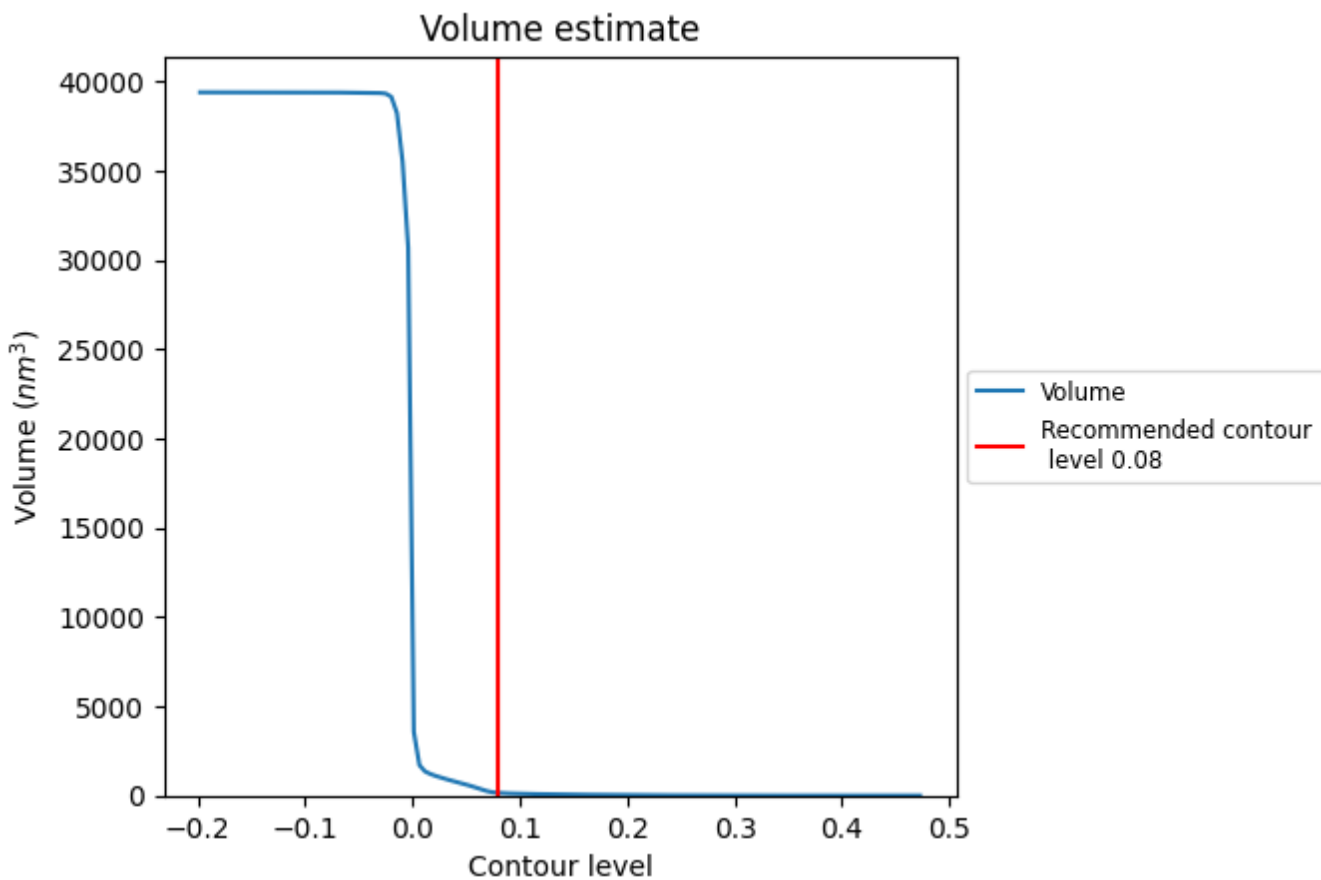
This section contains the results of statistical analysis of the map.

7.1 Map-value distribution [i](#)



The map-value distribution is plotted in 128 intervals along the x-axis. The y-axis is logarithmic. A spike in this graph at zero usually indicates that the volume has been masked.

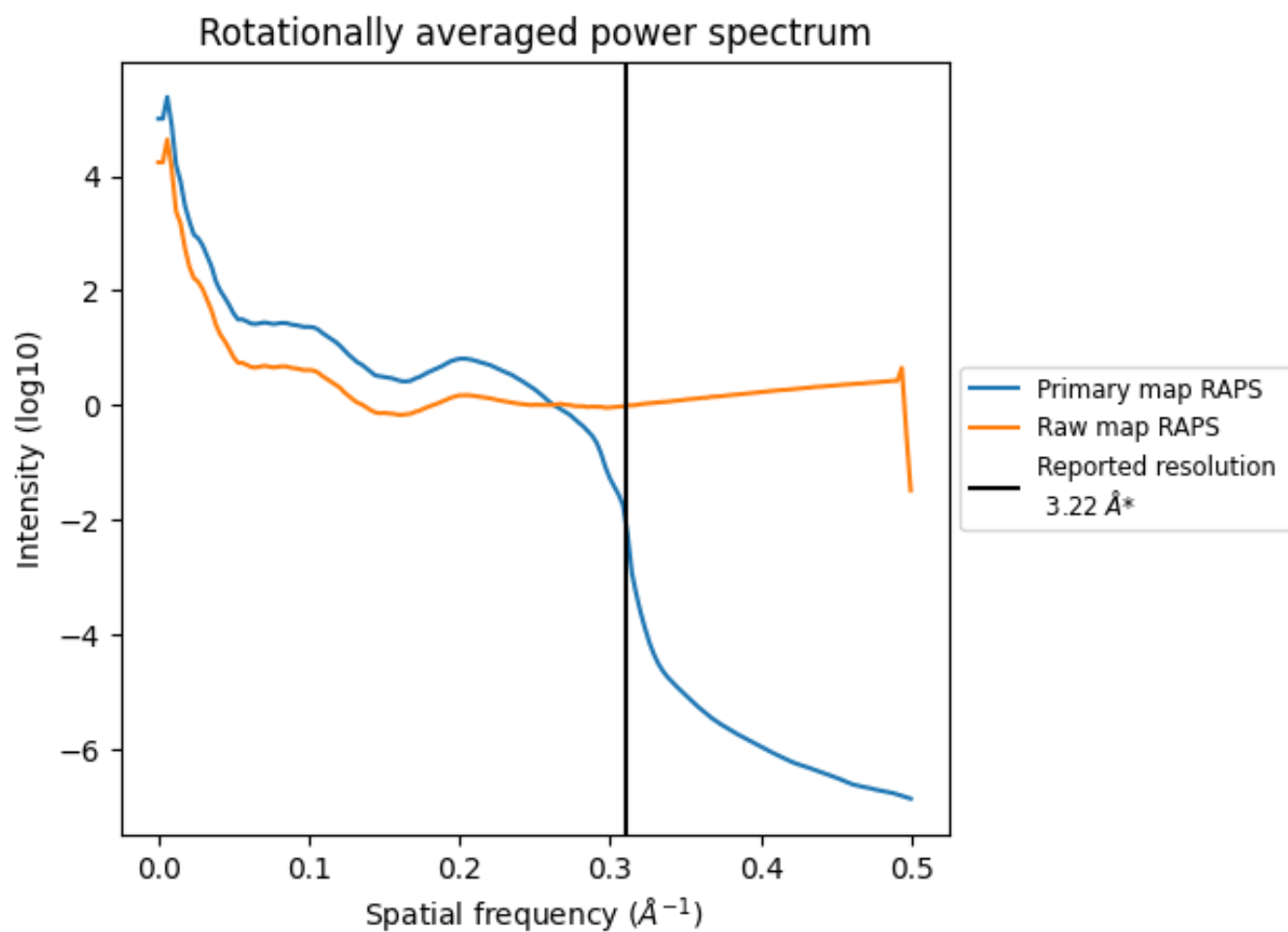
7.2 Volume estimate [i](#)



The volume at the recommended contour level is 149 nm³; this corresponds to an approximate mass of 135 kDa.

The volume estimate graph shows how the enclosed volume varies with the contour level. The recommended contour level is shown as a vertical line and the intersection between the line and the curve gives the volume of the enclosed surface at the given level.

7.3 Rotationally averaged power spectrum i

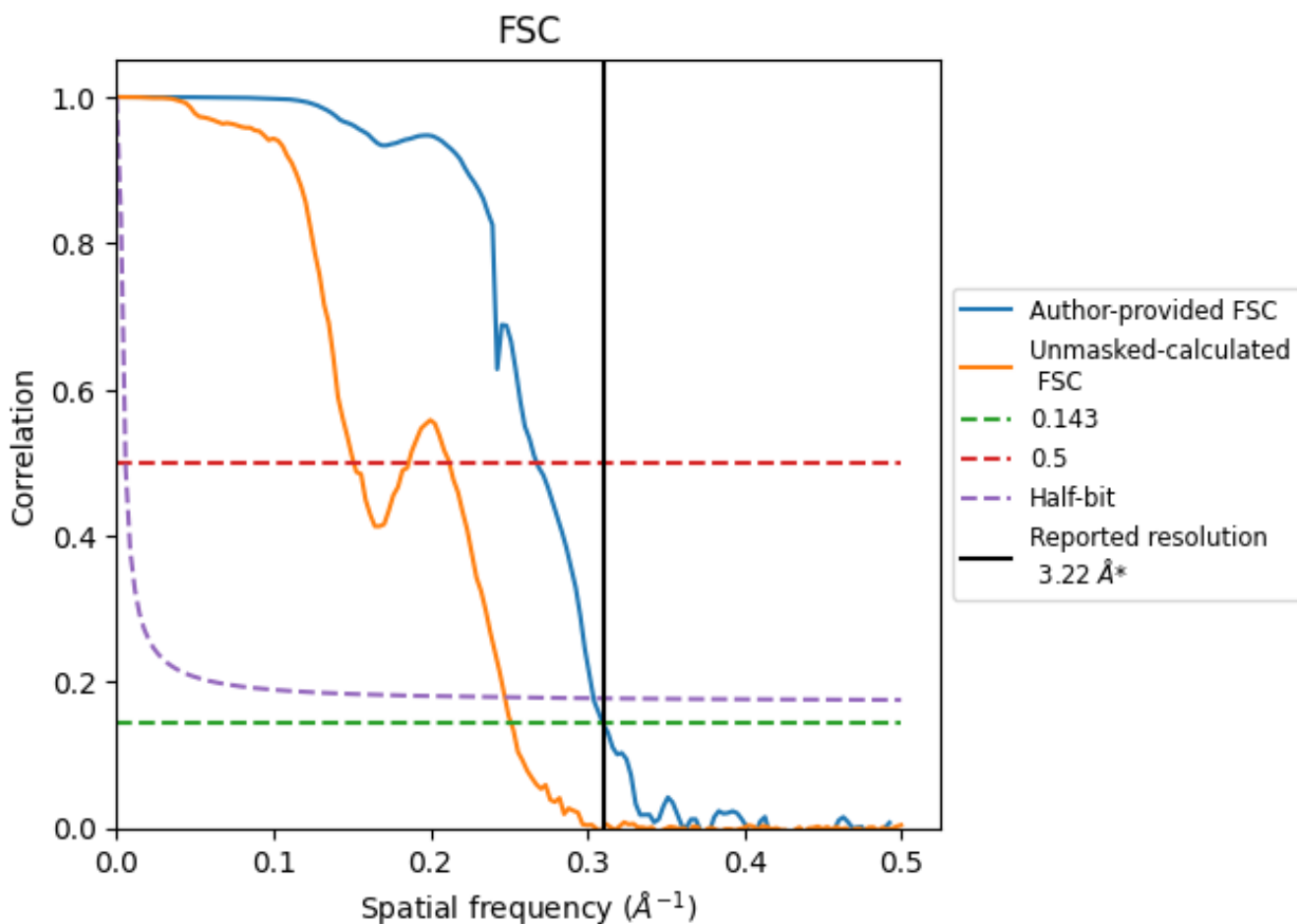


*Reported resolution corresponds to spatial frequency of 0.311 Å⁻¹

8 Fourier-Shell correlation [i](#)

Fourier-Shell Correlation (FSC) is the most commonly used method to estimate the resolution of single-particle and subtomogram-averaged maps. The shape of the curve depends on the imposed symmetry, mask and whether or not the two 3D reconstructions used were processed from a common reference. The reported resolution is shown as a black line. A curve is displayed for the half-bit criterion in addition to lines showing the 0.143 gold standard cut-off and 0.5 cut-off.

8.1 FSC [i](#)



*Reported resolution corresponds to spatial frequency of 0.311 Å⁻¹

8.2 Resolution estimates [i](#)

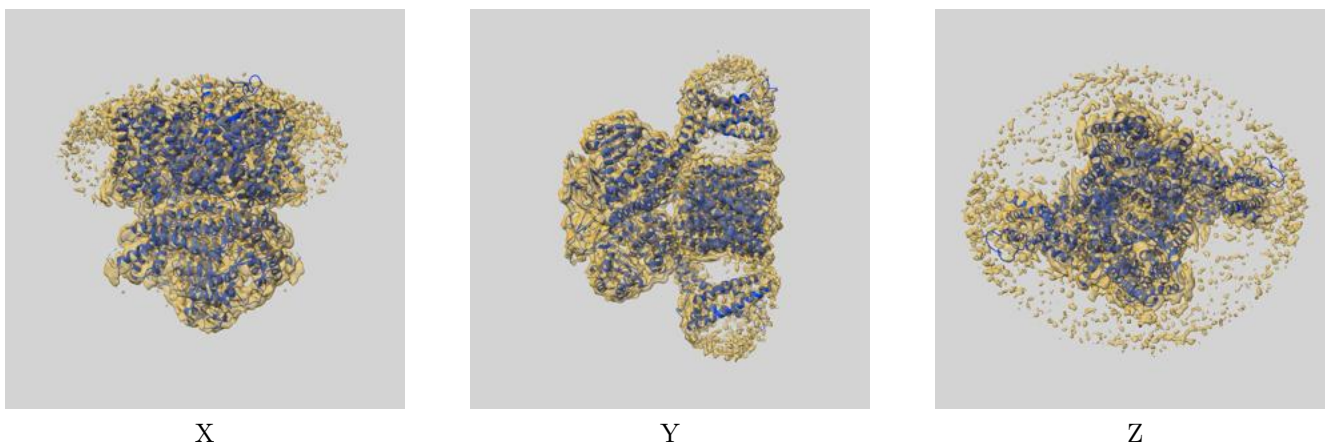
Resolution estimate (Å)	Estimation criterion (FSC cut-off)		
	0.143	0.5	Half-bit
Reported by author	3.22	-	-
Author-provided FSC curve	3.23	3.74	3.29
Unmasked-calculated*	3.98	6.62	4.04

*Resolution estimate based on FSC curve calculated by comparison of deposited half-maps. The value from deposited half-maps intersecting FSC 0.143 CUT-OFF 3.98 differs from the reported value 3.22 by more than 10 %

9 Map-model fit [i](#)

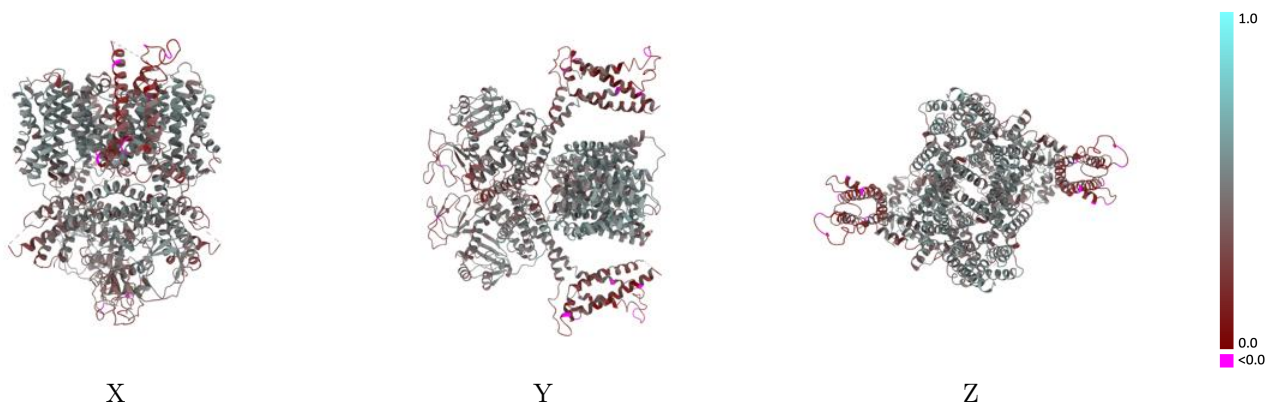
This section contains information regarding the fit between EMDB map EMD-17182 and PDB model 8OTQ. Per-residue inclusion information can be found in section [3](#) on page [6](#).

9.1 Map-model overlay [i](#)



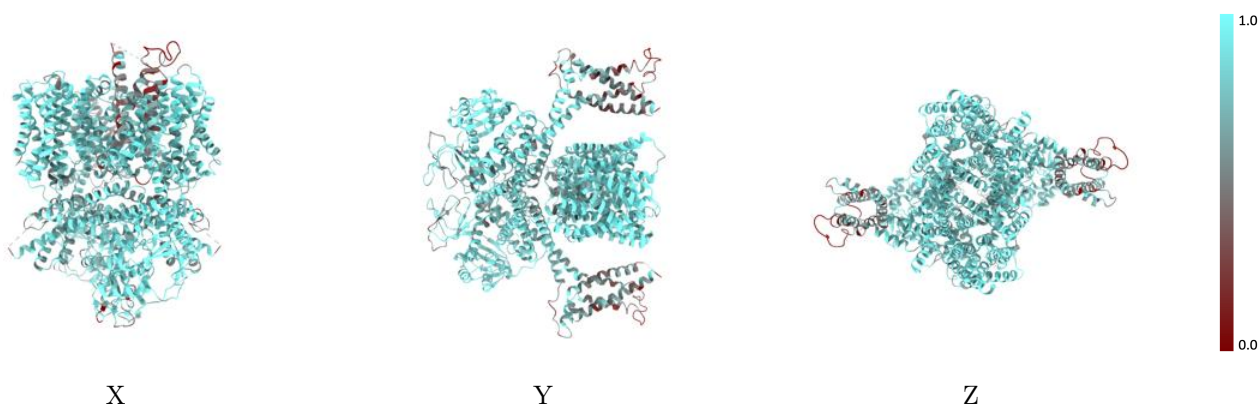
The images above show the 3D surface view of the map at the recommended contour level 0.08 at 50% transparency in yellow overlaid with a ribbon representation of the model coloured in blue. These images allow for the visual assessment of the quality of fit between the atomic model and the map.

9.2 Q-score mapped to coordinate model [\(i\)](#)



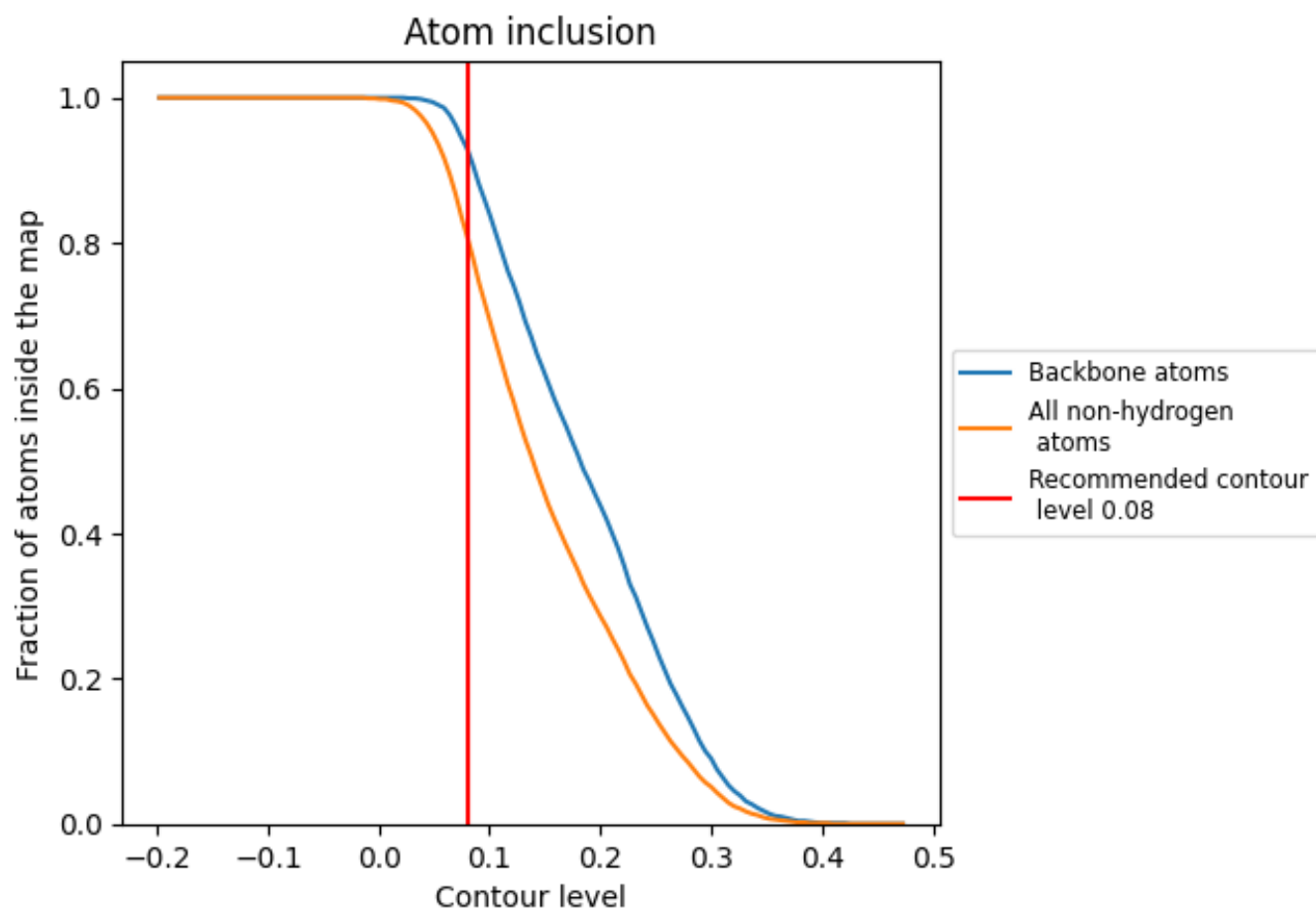
The images above show the model with each residue coloured according to its Q-score. This shows their resolvability in the map with higher Q-score values reflecting better resolvability. Please note: Q-score is calculating the resolvability of atoms, and thus high values are only expected at resolutions at which atoms can be resolved. Low Q-score values may therefore be expected for many entries.

9.3 Atom inclusion mapped to coordinate model [\(i\)](#)



The images above show the model with each residue coloured according to its atom inclusion. This shows to what extent they are inside the map at the recommended contour level (0.08).







9.4 Atom inclusion [i](#)



At the recommended contour level, 93% of all backbone atoms, 81% of all non-hydrogen atoms, are inside the map.

9.5 Map-model fit summary [i](#)

The table lists the average atom inclusion at the recommended contour level (0.08) and Q-score for the entire model and for each chain.

Chain	Atom inclusion	Q-score
All	 0.8080	 0.4190
A	 0.8070	 0.4190
B	 0.8080	 0.4190

