



wwPDB X-ray Structure Validation Summary Report ⓘ

May 23, 2022 – 01:44 pm BST

PDB ID : 5OU8
Title : Crystal structure of Glycoprotein VI in complex with collagen-peptide (GPO)5
Authors : Feitsma, L.J.; Huizinga, E.G.
Deposited on : 2017-08-23
Resolution : 2.50 Å(reported)

This is a wwPDB X-ray Structure Validation Summary Report for a publicly released PDB entry.

We welcome your comments at validation@mail.wwpdb.org

A user guide is available at

<https://www.wwpdb.org/validation/2017/XrayValidationReportHelp>

with specific help available everywhere you see the ⓘ symbol.

The following versions of software and data (see [references ⓘ](#)) were used in the production of this report:

MolProbity : 4.02b-467
Mogul : 1.8.4, CSD as541be (2020)
Xtriage (Phenix) : 1.13
EDS : 2.28.1
Percentile statistics : 20191225.v01 (using entries in the PDB archive December 25th 2019)
Refmac : 5.8.0267
CCP4 : 7.1.010 (Gargrove)
Ideal geometry (proteins) : Engh & Huber (2001)
Ideal geometry (DNA, RNA) : Parkinson et al. (1996)
Validation Pipeline (wwPDB-VP) : 2.28.1

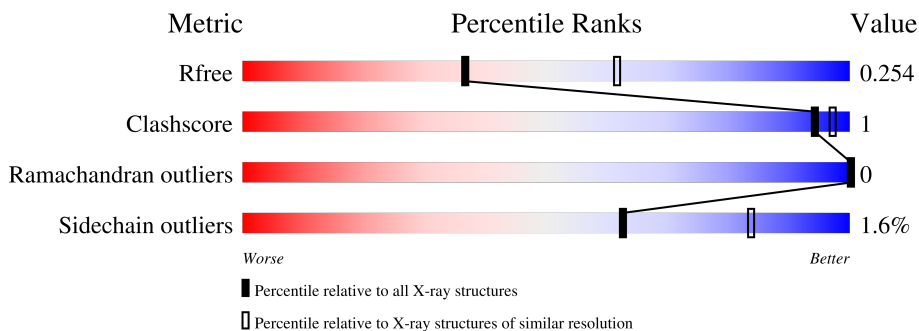
1 Overall quality at a glance

The following experimental techniques were used to determine the structure:

X-RAY DIFFRACTION

The reported resolution of this entry is 2.50 Å.

Percentile scores (ranging between 0-100) for global validation metrics of the entry are shown in the following graphic. The table shows the number of entries on which the scores are based.



Metric	Whole archive (#Entries)	Similar resolution (#Entries, resolution range(Å))
R_{free}	130704	4661 (2.50-2.50)
Clashscore	141614	5346 (2.50-2.50)
Ramachandran outliers	138981	5231 (2.50-2.50)
Sidechain outliers	138945	5233 (2.50-2.50)

The table below summarises the geometric issues observed across the polymeric chains and their fit to the electron density. The red, orange, yellow and green segments of the lower bar indicate the fraction of residues that contain outliers for ≥ 3 , 2, 1 and 0 types of geometric quality criteria respectively. A grey segment represents the fraction of residues that are not modelled. The numeric value for each fraction is indicated below the corresponding segment, with a dot representing fractions $\leq 5\%$.

Mol	Chain	Length	Quality of chain
1	A	181	92% (green), 5% (yellow), 3% (orange), 2% (red), 2% (grey)
1	B	181	88% (green), 5% (yellow), 7% (orange), 2% (red), 2% (grey)
2	C	15	73% (green), 27% (yellow)
2	D	15	60% (green), 33% (yellow), 7% (orange)
2	E	15	67% (green), 33% (yellow)

2 Entry composition [i](#)

There are 6 unique types of molecules in this entry. The entry contains 3114 atoms, of which 0 are hydrogens and 0 are deuteriums.

In the tables below, the ZeroOcc column contains the number of atoms modelled with zero occupancy, the AltConf column contains the number of residues with at least one atom in alternate conformation and the Trace column contains the number of residues modelled with at most 2 atoms.

- Molecule 1 is a protein called Platelet glycoprotein VI.

Mol	Chain	Residues	Atoms					ZeroOcc	AltConf	Trace
			Total	C	N	O	S			
1	A	174	1367	872	234	256	5	0	2	0
1	B	169	1321	845	224	247	5	0	0	0

There are 30 discrepancies between the modelled and reference sequences:

Chain	Residue	Modelled	Actual	Comment	Reference
A	-1	GLY	-	expression tag	UNP Q9HCN6
A	0	SER	-	expression tag	UNP Q9HCN6
A	?	-	PRO	deletion	UNP Q9HCN6
A	?	-	ALA	deletion	UNP Q9HCN6
A	?	-	VAL	deletion	UNP Q9HCN6
A	?	-	SER	deletion	UNP Q9HCN6
A	?	-	PRO	deletion	UNP Q9HCN6
A	?	-	ALA	deletion	UNP Q9HCN6
A	?	-	PRO	deletion	UNP Q9HCN6
A	?	-	TYR	deletion	UNP Q9HCN6
A	?	-	LYS	deletion	UNP Q9HCN6
A	?	-	ASN	deletion	UNP Q9HCN6
A	177	ALA	-	expression tag	UNP Q9HCN6
A	178	ALA	-	expression tag	UNP Q9HCN6
A	179	ALA	-	expression tag	UNP Q9HCN6
B	-1	GLY	-	expression tag	UNP Q9HCN6
B	0	SER	-	expression tag	UNP Q9HCN6
B	?	-	PRO	deletion	UNP Q9HCN6
B	?	-	ALA	deletion	UNP Q9HCN6
B	?	-	VAL	deletion	UNP Q9HCN6
B	?	-	SER	deletion	UNP Q9HCN6
B	?	-	PRO	deletion	UNP Q9HCN6
B	?	-	ALA	deletion	UNP Q9HCN6
B	?	-	PRO	deletion	UNP Q9HCN6
B	?	-	TYR	deletion	UNP Q9HCN6

Continued on next page...

Continued from previous page...

Chain	Residue	Modelled	Actual	Comment	Reference
B	?	-	LYS	deletion	UNP Q9HCN6
B	?	-	ASN	deletion	UNP Q9HCN6
B	177	ALA	-	expression tag	UNP Q9HCN6
B	178	ALA	-	expression tag	UNP Q9HCN6
B	179	ALA	-	expression tag	UNP Q9HCN6

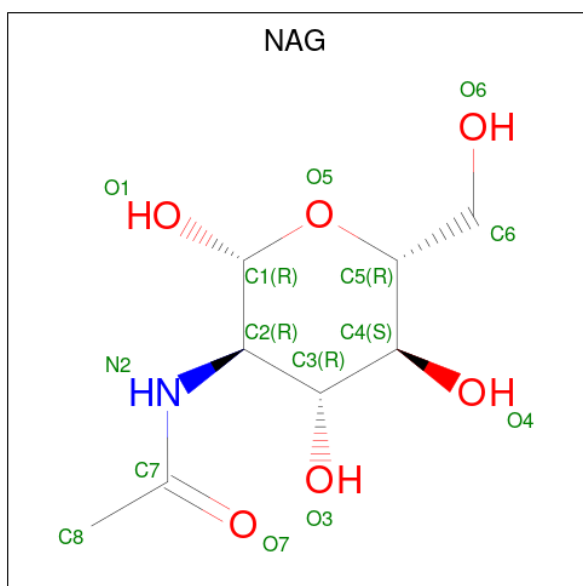
- Molecule 2 is a protein called (GPO)5.

Mol	Chain	Residues	Atoms				ZeroOcc	AltConf	Trace
2	C	15	Total	C	N	O	0	0	0
			95	60	15	20			
2	D	15	Total	C	N	O	0	0	0
			95	60	15	20			
2	E	15	Total	C	N	O	0	0	0
			95	60	15	20			

- Molecule 3 is CHLORIDE ION (three-letter code: CL) (formula: Cl).

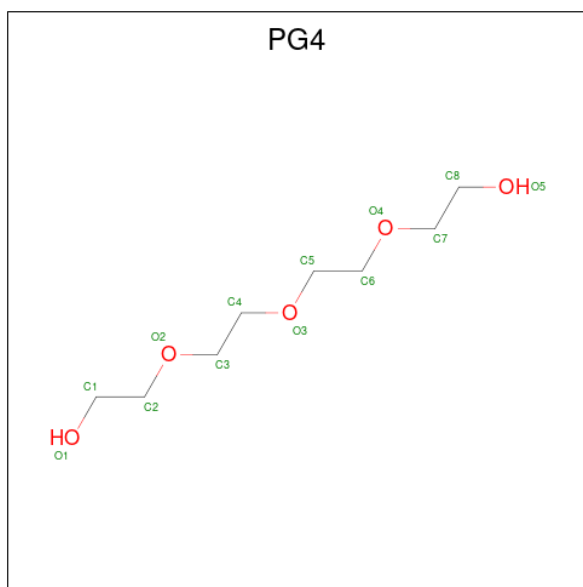
Mol	Chain	Residues	Atoms		ZeroOcc	AltConf
3	A	1	Total	Cl	0	0
			1	1		
3	B	1	Total	Cl	0	0
			1	1		

- Molecule 4 is 2-acetamido-2-deoxy-beta-D-glucopyranose (three-letter code: NAG) (formula: C₈H₁₅NO₆).



Mol	Chain	Residues	Atoms				ZeroOcc	AltConf
4	A	1	Total	C	N	O	0	0
			14	8	1	5		
4	B	1	Total	C	N	O	0	0
			14	8	1	5		

- Molecule 5 is TETRAETHYLENE GLYCOL (three-letter code: PG4) (formula: C₈H₁₈O₅).



Mol	Chain	Residues	Atoms			ZeroOcc	AltConf
5	A	1	Total	C	O	0	0
			13	8	5		
5	B	1	Total	C	O	0	0
			10	6	4		

- Molecule 6 is water.

Mol	Chain	Residues	Atoms		ZeroOcc	AltConf
6	A	41	Total	O	0	0
			41	41		
6	B	42	Total	O	0	0
			42	42		
6	C	3	Total	O	0	0
			3	3		
6	E	2	Total	O	0	0
			2	2		

3 Residue-property plots [i](#)


These plots are drawn for all protein, RNA, DNA and oligosaccharide chains in the entry. The first graphic for a chain summarises the proportions of the various outlier classes displayed in the second graphic. The second graphic shows the sequence view annotated by issues in geometry. Residues are color-coded according to the number of geometric quality criteria for which they contain at least one outlier: green = 0, yellow = 1, orange = 2 and red = 3 or more. Stretches of 2 or more consecutive residues without any outlier are shown as a green connector. Residues present in the sample, but not in the model, are shown in grey.

- Molecule 1: Platelet glycoprotein VI

Chain A:  92%



- Molecule 1: Platelet glycoprotein VI

Chain B:  88% 5% 7%



- Molecule 2: (GPO)5

Chain C:  73% 27%



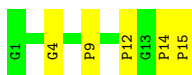
- Molecule 2: (GPO)5

Chain D:  60% 33% 7%



- Molecule 2: (GPO)5

Chain E:  67% 33%



4 Data and refinement statistics

Property	Value	Source
Space group	P 41 21 2	Depositor
Cell constants a, b, c, α , β , γ	59.97Å 59.97Å 313.21Å 90.00° 90.00° 90.00°	Depositor
Resolution (Å)	78.30 – 2.50 58.90 – 2.50	Depositor EDS
% Data completeness (in resolution range)	99.0 (78.30-2.50) 99.0 (58.90-2.50)	Depositor EDS
R_{merge}	0.12	Depositor
R_{sym}	(Not available)	Depositor
$\langle I/\sigma(I) \rangle$ ¹	1.61 (at 2.51Å)	Xtriage
Refinement program	REFMAC 5.8.0073	Depositor
R, R_{free}	0.208 , 0.257 0.213 , 0.254	Depositor DCC
R_{free} test set	1022 reflections (4.93%)	wwPDB-VP
Wilson B-factor (Å ²)	55.3	Xtriage
Anisotropy	0.113	Xtriage
Bulk solvent k_{sol} (e/Å ³), B_{sol} (Å ²)	(Not available) , (Not available)	EDS
L-test for twinning ²	$\langle L \rangle = 0.48$, $\langle L^2 \rangle = 0.31$	Xtriage
Estimated twinning fraction	No twinning to report.	Xtriage
F_o, F_c correlation	0.94	EDS
Total number of atoms	3114	wwPDB-VP
Average B, all atoms (Å ²)	58.0	wwPDB-VP

Xtriage's analysis on translational NCS is as follows: *The largest off-origin peak in the Patterson function is 6.04% of the height of the origin peak. No significant pseudotranslation is detected.*

¹Intensities estimated from amplitudes.

²Theoretical values of $\langle |L| \rangle$, $\langle L^2 \rangle$ for acentric reflections are 0.5, 0.333 respectively for untwinned datasets, and 0.375, 0.2 for perfectly twinned datasets.

5 Model quality [i](#)

5.1 Standard geometry [i](#)

Bond lengths and bond angles in the following residue types are not validated in this section: PG4, CL, HYP, NAG

The Z score for a bond length (or angle) is the number of standard deviations the observed value is removed from the expected value. A bond length (or angle) with $|Z| > 5$ is considered an outlier worth inspection. RMSZ is the root-mean-square of all Z scores of the bond lengths (or angles).

Mol	Chain	Bond lengths		Bond angles	
		RMSZ	# Z >5	RMSZ	# Z >5
1	A	0.50	0/1412	0.66	0/1924
1	B	0.51	0/1359	0.67	0/1853
2	C	0.59	0/55	0.45	0/70
2	D	0.57	0/55	0.53	0/70
2	E	0.58	0/55	0.52	0/70
All	All	0.51	0/2936	0.66	0/3987

There are no bond length outliers.

There are no bond angle outliers.

There are no chirality outliers.

There are no planarity outliers.

5.2 Too-close contacts [i](#)

In the following table, the Non-H and H(model) columns list the number of non-hydrogen atoms and hydrogen atoms in the chain respectively. The H(added) column lists the number of hydrogen atoms added and optimized by MolProbity. The Clashes column lists the number of clashes within the asymmetric unit, whereas Symm-Clashes lists symmetry-related clashes.

Mol	Chain	Non-H	H(model)	H(added)	Clashes	Symm-Clashes
1	A	1367	0	1351	3	0
1	B	1321	0	1299	3	0
2	C	95	0	87	0	0
2	D	95	0	87	2	0
2	E	95	0	85	2	0
3	A	1	0	0	0	0
3	B	1	0	0	0	0
4	A	14	0	13	0	0

Continued on next page...

Continued from previous page...

Mol	Chain	Non-H	H(model)	H(added)	Clashes	Symm-Clashes
4	B	14	0	13	0	0
5	A	13	0	18	0	0
5	B	10	0	13	0	0
6	A	41	0	0	0	0
6	B	42	0	0	0	0
6	C	3	0	0	0	0
6	E	2	0	0	0	0
All	All	3114	0	2966	8	0

The all-atom clashscore is defined as the number of clashes found per 1000 atoms (including hydrogen atoms). The all-atom clashscore for this structure is 1.

The worst 5 of 8 close contacts within the same asymmetric unit are listed below, sorted by their clash magnitude.

Atom-1	Atom-2	Interatomic distance (Å)	Clash overlap (Å)
1:A:126:ASP:HA	1:A:127:PRO:C	2.28	0.53
1:A:126:ASP:HA	1:A:128:GLU:N	2.27	0.49
1:A:124:GLU:OE2	1:A:149[A]:ARG:NH2	2.46	0.48
1:B:42:LEU:HD22	1:B:65:ARG:HD2	2.00	0.44
2:D:5:PRO:O	2:E:4:GLY:HA3	2.18	0.43

There are no symmetry-related clashes.

5.3 Torsion angles [i](#)

5.3.1 Protein backbone [i](#)

In the following table, the Percentiles column shows the percent Ramachandran outliers of the chain as a percentile score with respect to all X-ray entries followed by that with respect to entries of similar resolution.

The Analysed column shows the number of residues for which the backbone conformation was analysed, and the total number of residues.

Mol	Chain	Analysed	Favoured	Allowed	Outliers	Percentiles	
1	A	174/181 (96%)	170 (98%)	4 (2%)	0	100	100
1	B	167/181 (92%)	161 (96%)	6 (4%)	0	100	100
2	C	9/15 (60%)	9 (100%)	0	0	100	100
2	D	9/15 (60%)	9 (100%)	0	0	100	100

Continued on next page...

Continued from previous page...

Mol	Chain	Analysed	Favoured	Allowed	Outliers	Percentiles	
2	E	9/15 (60%)	9 (100%)	0	0	100	100
All	All	368/407 (90%)	358 (97%)	10 (3%)	0	100	100

There are no Ramachandran outliers to report.

5.3.2 Protein sidechains [i](#)

In the following table, the Percentiles column shows the percent sidechain outliers of the chain as a percentile score with respect to all X-ray entries followed by that with respect to entries of similar resolution.

The Analysed column shows the number of residues for which the sidechain conformation was analysed, and the total number of residues.

Mol	Chain	Analysed	Rotameric	Outliers	Percentiles	
1	A	152/152 (100%)	150 (99%)	2 (1%)	69	87
1	B	146/152 (96%)	143 (98%)	3 (2%)	53	78
2	C	5/5 (100%)	5 (100%)	0	100	100
2	D	5/5 (100%)	5 (100%)	0	100	100
2	E	5/5 (100%)	5 (100%)	0	100	100
All	All	313/319 (98%)	308 (98%)	5 (2%)	62	84

All (5) residues with a non-rotameric sidechain are listed below:

Mol	Chain	Res	Type
1	A	45	SER
1	A	65	ARG
1	B	40	GLU
1	B	102	SER
1	B	114	TYR

Sometimes sidechains can be flipped to improve hydrogen bonding and reduce clashes. There are no such sidechains identified.

5.3.3 RNA [i](#)

There are no RNA molecules in this entry.

5.4 Non-standard residues in protein, DNA, RNA chains [i](#)

15 non-standard protein/DNA/RNA residues are modelled in this entry.

In the following table, the Counts columns list the number of bonds (or angles) for which Mogul statistics could be retrieved, the number of bonds (or angles) that are observed in the model and the number of bonds (or angles) that are defined in the Chemical Component Dictionary. The Link column lists molecule types, if any, to which the group is linked. The Z score for a bond length (or angle) is the number of standard deviations the observed value is removed from the expected value. A bond length (or angle) with $|Z| > 2$ is considered an outlier worth inspection. RMSZ is the root-mean-square of all Z scores of the bond lengths (or angles).

Mol	Type	Chain	Res	Link	Bond lengths			Bond angles		
					Counts	RMSZ	# Z > 2	Counts	RMSZ	# Z > 2
2	HYP	E	3	2	6,8,9	0.36	0	5,10,12	0.97	0
2	HYP	E	9	2	6,8,9	0.69	0	5,10,12	2.01	2 (40%)
2	HYP	C	12	2	6,8,9	0.85	0	5,10,12	0.87	0
2	HYP	D	9	2	6,8,9	0.71	0	5,10,12	2.10	2 (40%)
2	HYP	C	6	2	6,8,9	0.69	0	5,10,12	1.50	1 (20%)
2	HYP	D	12	2	6,8,9	0.77	0	5,10,12	1.71	1 (20%)
2	HYP	D	6	2	6,8,9	0.64	0	5,10,12	1.42	1 (20%)
2	HYP	D	3	2	6,8,9	0.52	0	5,10,12	1.76	1 (20%)
2	HYP	C	3	2	6,8,9	0.42	0	5,10,12	1.84	2 (40%)
2	HYP	E	15	2	6,8,9	0.55	0	5,10,12	1.84	3 (60%)
2	HYP	C	9	2	6,8,9	0.72	0	5,10,12	1.45	1 (20%)
2	HYP	E	12	2	6,8,9	0.56	0	5,10,12	2.17	2 (40%)
2	HYP	E	6	2	6,8,9	0.66	0	5,10,12	1.63	0
2	HYP	D	15	2	6,8,9	0.48	0	5,10,12	1.63	2 (40%)
2	HYP	C	15	2	6,8,9	0.62	0	5,10,12	1.99	2 (40%)

In the following table, the Chirals column lists the number of chiral outliers, the number of chiral centers analysed, the number of these observed in the model and the number defined in the Chemical Component Dictionary. Similar counts are reported in the Torsion and Rings columns. '-' means no outliers of that kind were identified.

Mol	Type	Chain	Res	Link	Chirals	Torsions	Rings
2	HYP	E	3	2	-	0/0/11/13	0/1/1/1
2	HYP	E	9	2	-	0/0/11/13	0/1/1/1
2	HYP	C	12	2	-	0/0/11/13	0/1/1/1
2	HYP	D	9	2	-	0/0/11/13	0/1/1/1
2	HYP	C	6	2	-	0/0/11/13	0/1/1/1
2	HYP	D	12	2	-	0/0/11/13	0/1/1/1
2	HYP	D	6	2	-	0/0/11/13	0/1/1/1

Continued on next page...

Continued from previous page...

Mol	Type	Chain	Res	Link	Chirals	Torsions	Rings
2	HYP	D	3	2	-	0/0/11/13	0/1/1/1
2	HYP	C	3	2	-	0/0/11/13	0/1/1/1
2	HYP	E	15	2	-	0/0/11/13	0/1/1/1
2	HYP	C	9	2	-	0/0/11/13	0/1/1/1
2	HYP	E	12	2	-	0/0/11/13	0/1/1/1
2	HYP	E	6	2	-	0/0/11/13	0/1/1/1
2	HYP	D	15	2	-	0/0/11/13	0/1/1/1
2	HYP	C	15	2	-	0/0/11/13	0/1/1/1

There are no bond length outliers.

The worst 5 of 20 bond angle outliers are listed below:

Mol	Chain	Res	Type	Atoms	Z	Observed(°)	Ideal(°)
2	E	12	HYP	CB-CG-CD	4.14	108.34	103.27
2	E	9	HYP	CB-CG-CD	3.63	107.72	103.27
2	D	9	HYP	OD1-CG-CB	-3.27	101.94	110.03
2	C	15	HYP	CB-CG-CD	3.08	107.04	103.27
2	D	12	HYP	CG-CB-CA	3.06	107.83	103.96

There are no chirality outliers.

There are no torsion outliers.

There are no ring outliers.

1 monomer is involved in 1 short contact:

Mol	Chain	Res	Type	Clashes	Symm-Clashes
2	D	15	HYP	1	0

5.5 Carbohydrates [i](#)

There are no monosaccharides in this entry.

5.6 Ligand geometry [i](#)

Of 6 ligands modelled in this entry, 2 are monoatomic - leaving 4 for Mogul analysis.

In the following table, the Counts columns list the number of bonds (or angles) for which Mogul statistics could be retrieved, the number of bonds (or angles) that are observed in the model and the number of bonds (or angles) that are defined in the Chemical Component Dictionary. The Link column lists molecule types, if any, to which the group is linked. The Z score for a bond length (or angle) is the number of standard deviations the observed value is removed from the

expected value. A bond length (or angle) with $|Z| > 2$ is considered an outlier worth inspection. RMSZ is the root-mean-square of all Z scores of the bond lengths (or angles).

Mol	Type	Chain	Res	Link	Bond lengths			Bond angles		
					Counts	RMSZ	# Z > 2	Counts	RMSZ	# Z > 2
5	PG4	A	203	-	12,12,12	0.50	0	11,11,11	0.48	0
4	NAG	A	202	1	14,14,15	0.51	0	17,19,21	1.50	3 (17%)
5	PG4	B	203	-	9,9,12	0.53	0	8,8,11	0.26	0
4	NAG	B	202	1	14,14,15	0.53	0	17,19,21	1.71	3 (17%)

In the following table, the Chirals column lists the number of chiral outliers, the number of chiral centers analysed, the number of these observed in the model and the number defined in the Chemical Component Dictionary. Similar counts are reported in the Torsion and Rings columns. '-' means no outliers of that kind were identified.

Mol	Type	Chain	Res	Link	Chirals	Torsions	Rings
5	PG4	A	203	-	-	4/10/10/10	-
4	NAG	A	202	1	-	1/6/23/26	0/1/1/1
5	PG4	B	203	-	-	4/7/7/10	-
4	NAG	B	202	1	-	0/6/23/26	0/1/1/1

There are no bond length outliers.

The worst 5 of 6 bond angle outliers are listed below:

Mol	Chain	Res	Type	Atoms	Z	Observed(°)	Ideal(°)
4	B	202	NAG	C1-O5-C5	4.30	118.02	112.19
4	A	202	NAG	C1-C2-N2	3.77	116.92	110.49
4	B	202	NAG	C4-C3-C2	-3.40	106.03	111.02
4	A	202	NAG	O5-C1-C2	-2.63	107.13	111.29
4	A	202	NAG	O5-C5-C6	2.24	110.71	107.20

There are no chirality outliers.

5 of 9 torsion outliers are listed below:

Mol	Chain	Res	Type	Atoms
5	B	203	PG4	O2-C3-C4-O3
5	B	203	PG4	O1-C1-C2-O2
5	B	203	PG4	O3-C5-C6-O4
5	A	203	PG4	O1-C1-C2-O2
5	A	203	PG4	O3-C5-C6-O4

There are no ring outliers.

No monomer is involved in short contacts.

5.7 Other polymers [i](#)

There are no such residues in this entry.

5.8 Polymer linkage issues [i](#)

There are no chain breaks in this entry.

6 Fit of model and data

6.1 Protein, DNA and RNA chains

Unable to reproduce the depositors R factor - this section is therefore empty.

6.2 Non-standard residues in protein, DNA, RNA chains

Unable to reproduce the depositors R factor - this section is therefore empty.

6.3 Carbohydrates

Unable to reproduce the depositors R factor - this section is therefore empty.

6.4 Ligands

Unable to reproduce the depositors R factor - this section is therefore empty.

6.5 Other polymers

Unable to reproduce the depositors R factor - this section is therefore empty.