



# Full wwPDB X-ray Structure Validation Report ⓘ

Jun 14, 2022 – 10:38 am BST

PDB ID : 7OV6  
Title : Structure of Human Serum Albumin in complex with Aristolochic Acid I at  
1.9 Å resolution - Optimized  
Authors : Pomyalov, S.; Sidorenko, V.S.; Grollman, A.P.; Shoham, G.  
Deposited on : 2021-06-14  
Resolution : 1.90 Å (reported)

This is a Full wwPDB X-ray Structure Validation Report for a publicly released PDB entry.

We welcome your comments at [validation@mail.wwpdb.org](mailto:validation@mail.wwpdb.org)

A user guide is available at

<https://www.wwpdb.org/validation/2017/XrayValidationReportHelp>

with specific help available everywhere you see the ⓘ symbol.

---

The following versions of software and data (see [references ⓘ](#)) were used in the production of this report:

MolProbity : 4.02b-467  
Mogul : 1.8.4, CSD as541be (2020)  
Xtrriage (Phenix) : 1.13  
EDS : 2.28.1  
buster-report : 1.1.7 (2018)  
Percentile statistics : 20191225.v01 (using entries in the PDB archive December 25th 2019)  
Refmac : 5.8.0267  
CCP4 : 7.1.010 (Gargrove)  
Ideal geometry (proteins) : Engh & Huber (2001)  
Ideal geometry (DNA, RNA) : Parkinson et al. (1996)  
Validation Pipeline (wwPDB-VP) : 2.28.1

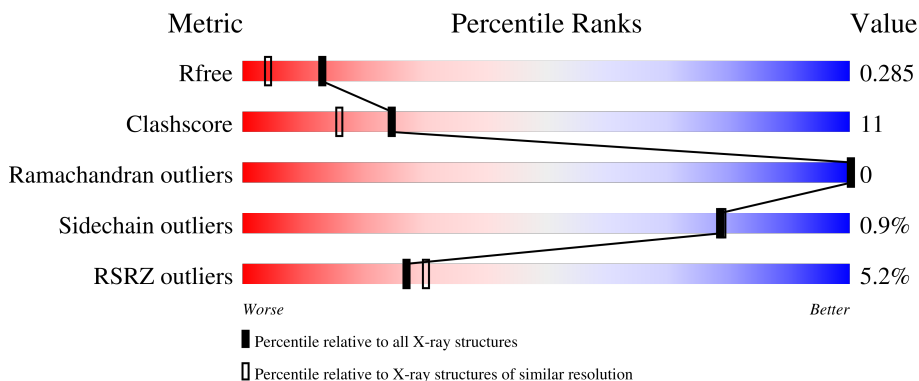
# 1 Overall quality at a glance

The following experimental techniques were used to determine the structure:

*X-RAY DIFFRACTION*

The reported resolution of this entry is 1.90 Å.

Percentile scores (ranging between 0-100) for global validation metrics of the entry are shown in the following graphic. The table shows the number of entries on which the scores are based.



Metric	Whole archive (#Entries)	Similar resolution (#Entries, resolution range(Å))
$R_{free}$	130704	6207 (1.90-1.90)
Clashscore	141614	6847 (1.90-1.90)
Ramachandran outliers	138981	6760 (1.90-1.90)
Sidechain outliers	138945	6760 (1.90-1.90)
RSRZ outliers	127900	6082 (1.90-1.90)

The table below summarises the geometric issues observed across the polymeric chains and their fit to the electron density. The red, orange, yellow and green segments of the lower bar indicate the fraction of residues that contain outliers for  $\geq 3$ , 2, 1 and 0 types of geometric quality criteria respectively. A grey segment represents the fraction of residues that are not modelled. The numeric value for each fraction is indicated below the corresponding segment, with a dot representing fractions  $\leq 5\%$ . The upper red bar (where present) indicates the fraction of residues that have poor fit to the electron density. The numeric value is given above the bar.

Mol	Chain	Length	Quality of chain
1	A	609	
1	B	609	

The following table lists non-polymeric compounds, carbohydrate monomers and non-standard residues in protein, DNA, RNA chains that are outliers for geometric or electron-density-fit criteria:

Mol	Type	Chain	Res	Chirality	Geometry	Clashes	Electron density
2	MYR	A	603	-	-	X	-

## 2 Entry composition [i](#)

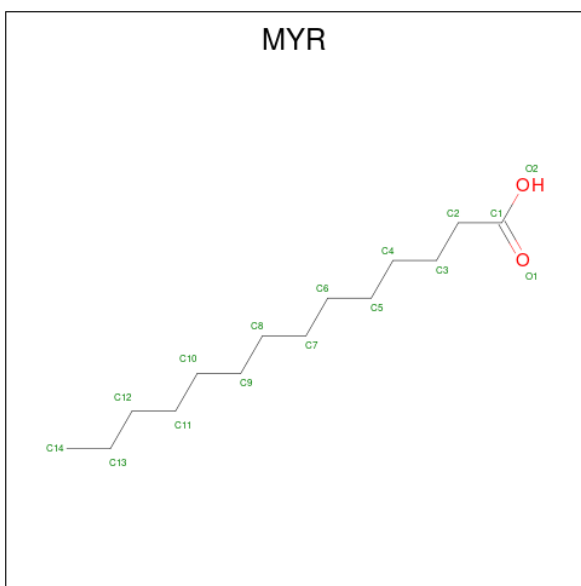
There are 5 unique types of molecules in this entry. The entry contains 10024 atoms, of which 28 are hydrogens and 0 are deuteriums.

In the tables below, the ZeroOcc column contains the number of atoms modelled with zero occupancy, the AltConf column contains the number of residues with at least one atom in alternate conformation and the Trace column contains the number of residues modelled with at most 2 atoms.

- Molecule 1 is a protein called Serum albumin.

Mol	Chain	Residues	Atoms					ZeroOcc	AltConf	Trace
			Total	C	N	O	S			
1	A	582	Total 4607	C 2909	N 783	O 874	S 41	0	3	0
1	B	582	Total 4598	C 2904	N 783	O 870	S 41	0	1	0

- Molecule 2 is MYRISTIC ACID (three-letter code: MYR) (formula:  $C_{14}H_{28}O_2$ ).



Mol	Chain	Residues	Atoms			ZeroOcc	AltConf
			Total	C	O		
2	A	1	Total 16	C 14	O 2	0	0
2	A	1	Total 16	C 14	O 2	0	0
2	A	1	Total 16	C 14	O 2	0	0
2	A	1	Total 16	C 14	O 2	0	0

*Continued on next page...*

Continued from previous page...

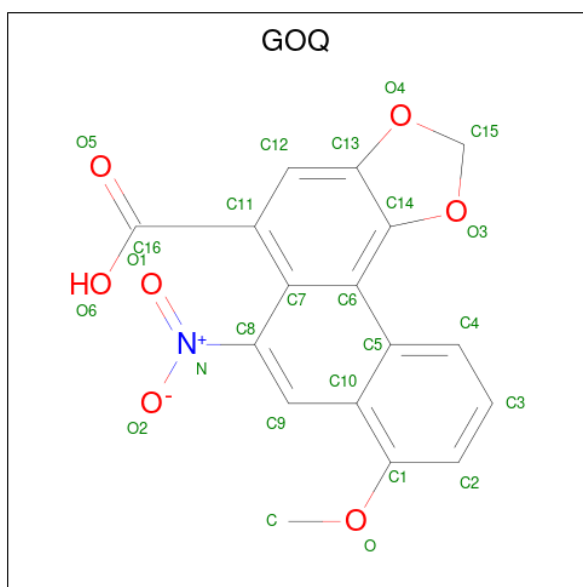
Mol	Chain	Residues	Atoms			ZeroOcc	AltConf
2	A	1	Total	C	O	0	0
			16	14	2		
2	A	1	Total	C	O	0	0
			16	14	2		
2	B	1	Total	C	O	0	0
			16	14	2		
2	B	1	Total	C	O	0	0
			16	14	2		
2	B	1	Total	C	O	0	0
			16	14	2		
2	B	1	Total	C	O	0	0
			16	14	2		
2	B	1	Total	C	O	0	0
			16	14	2		

- Molecule 3 is 1,2-ETHANEDIOL (three-letter code: EDO) (formula: C<sub>2</sub>H<sub>6</sub>O<sub>2</sub>).



Mol	Chain	Residues	Atoms				ZeroOcc	AltConf
3	A	1	Total	C	H	O	0	0
			10	2	6	2		

- Molecule 4 is 8-methoxy-6-nitro-naphtho[1,2-e][1,3]benzodioxole-5-carboxylic acid (three-letter code: GOQ) (formula: C<sub>17</sub>H<sub>11</sub>NO<sub>7</sub>) (labeled as "Ligand of Interest" by depositor).



Mol	Chain	Residues	Atoms				ZeroOcc	AltConf	
			Total	C	H	N			O
4	A	1	36	17	11	1	7	0	0
4	B	1	36	17	11	1	7	0	0

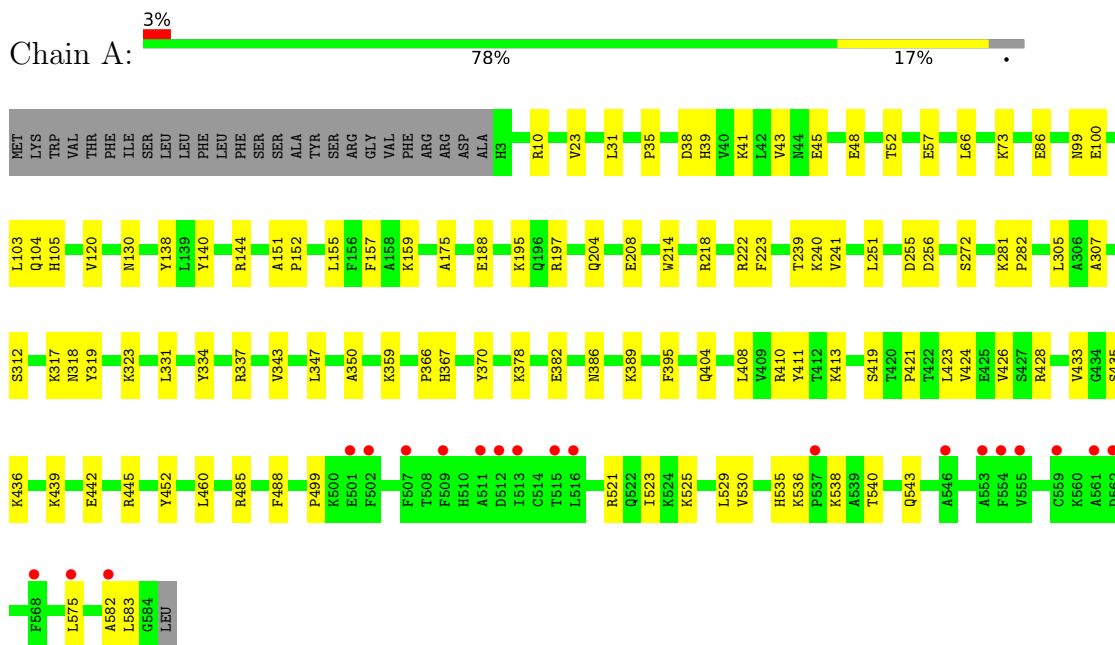
- Molecule 5 is water.

Mol	Chain	Residues	Atoms		ZeroOcc	AltConf
			Total	O		
5	A	378	381	381	0	3
5	B	163	164	164	0	1

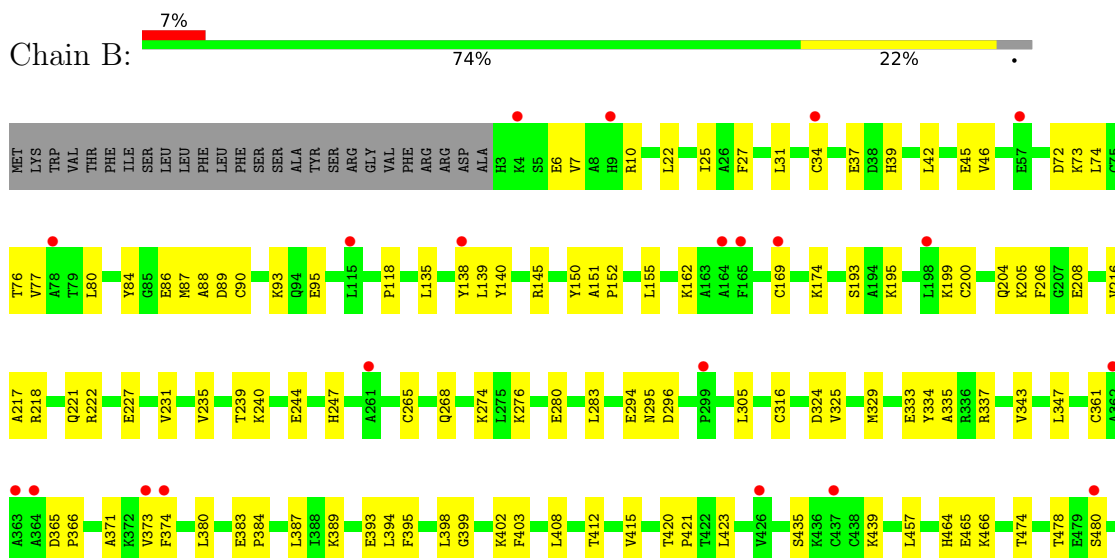
### 3 Residue-property plots

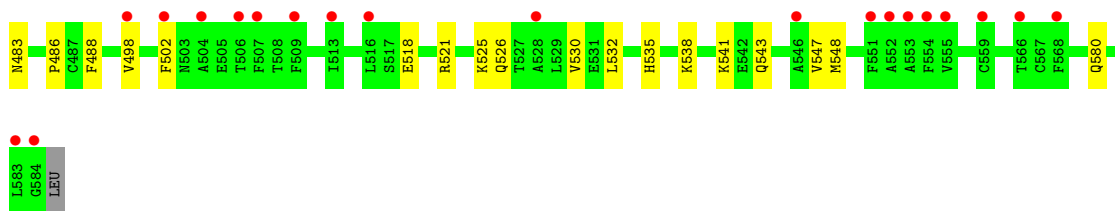
These plots are drawn for all protein, RNA, DNA and oligosaccharide chains in the entry. The first graphic for a chain summarises the proportions of the various outlier classes displayed in the second graphic. The second graphic shows the sequence view annotated by issues in geometry and electron density. Residues are color-coded according to the number of geometric quality criteria for which they contain at least one outlier: green = 0, yellow = 1, orange = 2 and red = 3 or more. A red dot above a residue indicates a poor fit to the electron density ( $RSRZ > 2$ ). Stretches of 2 or more consecutive residues without any outlier are shown as a green connector. Residues present in the sample, but not in the model, are shown in grey.

- Molecule 1: Serum albumin



- Molecule 1: Serum albumin







## 4 Data and refinement statistics

Property	Value	Source
Space group	P 1 21 1	Depositor
Cell constants a, b, c, $\alpha$ , $\beta$ , $\gamma$	95.25Å 38.19Å 181.92Å 90.00° 105.10° 90.00°	Depositor
Resolution (Å)	45.98 – 1.90 45.98 – 1.90	Depositor EDS
% Data completeness (in resolution range)	98.3 (45.98-1.90) 98.3 (45.98-1.90)	Depositor EDS
$R_{merge}$	0.08	Depositor
$R_{sym}$	(Not available)	Depositor
$\langle I/\sigma(I) \rangle$ <sup>1</sup>	1.85 (at 1.89Å)	Xtrriage
Refinement program	PHENIX 1.17.1_3660	Depositor
R, $R_{free}$	0.235 , 0.285 0.235 , 0.285	Depositor DCC
$R_{free}$ test set	5015 reflections (5.05%)	wwPDB-VP
Wilson B-factor (Å <sup>2</sup> )	23.9	Xtrriage
Anisotropy	0.396	Xtrriage
Bulk solvent $k_{sol}$ (e/Å <sup>3</sup> ), $B_{sol}$ (Å <sup>2</sup> )	(Not available) , (Not available)	EDS
L-test for twinning <sup>2</sup>	$\langle  L  \rangle = 0.41$ , $\langle L^2 \rangle = 0.23$	Xtrriage
Estimated twinning fraction	0.037 for h,-k,-h-l	Xtrriage
$F_o, F_c$ correlation	0.92	EDS
Total number of atoms	10024	wwPDB-VP
Average B, all atoms (Å <sup>2</sup> )	35.0	wwPDB-VP

Xtrriage's analysis on translational NCS is as follows: *The analyses of the Patterson function reveals a significant off-origin peak that is 34.57 % of the origin peak, indicating pseudo-translational symmetry. The chance of finding a peak of this or larger height randomly in a structure without pseudo-translational symmetry is equal to 6.6780e-04. The detected translational NCS is most likely also responsible for the elevated intensity ratio.*

<sup>1</sup>Intensities estimated from amplitudes.

<sup>2</sup>Theoretical values of  $\langle |L| \rangle$ ,  $\langle L^2 \rangle$  for acentric reflections are 0.5, 0.333 respectively for untwinned datasets, and 0.375, 0.2 for perfectly twinned datasets.

## 5 Model quality

### 5.1 Standard geometry

Bond lengths and bond angles in the following residue types are not validated in this section: MYR, GOQ, EDO

The Z score for a bond length (or angle) is the number of standard deviations the observed value is removed from the expected value. A bond length (or angle) with  $|Z| > 5$  is considered an outlier worth inspection. RMSZ is the root-mean-square of all Z scores of the bond lengths (or angles).

Mol	Chain	Bond lengths		Bond angles	
		RMSZ	# Z  >5	RMSZ	# Z  >5
1	A	0.51	0/4700	0.60	0/6347
1	B	0.35	0/4688	0.47	0/6330
All	All	0.44	0/9388	0.54	0/12677

There are no bond length outliers.

There are no bond angle outliers.

There are no chirality outliers.

There are no planarity outliers.

### 5.2 Too-close contacts

In the following table, the Non-H and H(model) columns list the number of non-hydrogen atoms and hydrogen atoms in the chain respectively. The H(added) column lists the number of hydrogen atoms added and optimized by MolProbity. The Clashes column lists the number of clashes within the asymmetric unit, whereas Symm-Clashes lists symmetry-related clashes.

Mol	Chain	Non-H	H(model)	H(added)	Clashes	Symm-Clashes
1	A	4607	0	4495	89	0
1	B	4598	0	4494	111	0
2	A	96	0	162	24	0
2	B	96	0	162	11	0
3	A	4	6	6	0	0
4	A	25	11	0	0	0
4	B	25	11	0	0	0
5	A	381	0	0	13	0
5	B	164	0	0	6	0
All	All	9996	28	9319	205	0

The all-atom clashscore is defined as the number of clashes found per 1000 atoms (including

hydrogen atoms). The all-atom clashscore for this structure is 11.

All (205) close contacts within the same asymmetric unit are listed below, sorted by their clash magnitude.

Atom-1	Atom-2	Interatomic distance (Å)	Clash overlap (Å)
1:A:66:LEU:HD21	2:A:601:MYR:H132	1.59	0.85
1:B:72:ASP:O	1:B:76:THR:HG23	1.79	0.81
1:A:195:LYS:HE2	5:A:709:HOH:O	1.84	0.76
1:A:436:LYS:HE2	1:A:452:TYR:OH	1.86	0.75
1:A:488:PHE:HB3	2:A:603:MYR:H71	1.70	0.73
1:A:460:LEU:HD22	2:A:603:MYR:H142	1.69	0.73
1:B:195:LYS:O	1:B:199:LYS:HG2	1.88	0.73
1:A:442:GLU:HA	1:A:445:ARG:HD2	1.72	0.71
1:B:276:LYS:O	1:B:280:GLU:HG3	1.91	0.71
1:A:35:PRO:HD2	1:A:38:ASP:OD2	1.92	0.70
1:B:394:LEU:HD23	1:B:403:PHE:CE1	2.27	0.70
1:A:460:LEU:HD13	2:A:603:MYR:H143	1.73	0.69
2:A:602:MYR:H132	2:A:602:MYR:H92	1.73	0.69
1:B:394:LEU:HD23	1:B:403:PHE:CD1	2.28	0.68
1:B:389:LYS:HD2	1:B:393:GLU:HG3	1.75	0.68
1:B:135:LEU:CD1	1:B:162:LYS:HD3	2.24	0.67
1:A:426:VAL:HG11	2:A:603:MYR:H141	1.77	0.67
1:B:45:GLU:OE1	1:B:73:LYS:NZ	2.28	0.66
1:B:412:THR:HG22	1:B:423:LEU:HD13	1.77	0.66
1:A:307:ALA:HB3	5:A:864:HOH:O	1.96	0.65
1:A:218[B]:ARG:CZ	1:A:222:ARG:HH21	2.09	0.65
1:A:366:PRO:HD2	5:A:860:HOH:O	1.97	0.65
1:B:227:GLU:O	1:B:231:VAL:HG23	1.95	0.65
1:B:412:THR:HG21	1:B:530:VAL:HG13	1.77	0.65
1:B:206:PHE:CZ	1:B:480:SER:HA	2.32	0.64
1:A:241:VAL:CG1	2:A:606:MYR:H143	2.28	0.63
1:B:25:ILE:HD11	1:B:139:LEU:HD11	1.81	0.62
1:B:80:LEU:HD23	1:B:88:ALA:HA	1.80	0.62
1:B:27:PHE:HD1	1:B:74:LEU:HD21	1.65	0.62
1:B:325:VAL:O	1:B:329:MET:HG3	2.00	0.61
1:B:218[B]:ARG:CZ	1:B:222:ARG:HH11	2.14	0.61
1:B:387:LEU:HD22	2:B:603:MYR:H22	1.83	0.61
1:B:412:THR:CG2	1:B:530:VAL:HG13	2.31	0.60
1:A:521:ARG:HG2	1:A:525:LYS:HE2	1.84	0.60
1:A:317:LYS:HE3	1:A:318:ASN:OD1	2.01	0.60
1:B:464:HIS:CE1	1:B:474:THR:HG23	2.37	0.59
1:A:428:ARG:CZ	1:A:523:ILE:HD11	2.33	0.59
1:B:408:LEU:HG	1:B:530:VAL:HG22	1.84	0.59

*Continued on next page...*

*Continued from previous page...*

Atom-1	Atom-2	Interatomic distance (Å)	Clash overlap (Å)
1:B:95:GLU:HA	1:B:95:GLU:OE1	2.02	0.58
1:B:265:CYS:O	1:B:268:GLN:HG3	2.03	0.58
1:B:415:VAL:HG23	1:B:415:VAL:O	2.03	0.58
2:B:602:MYR:H143	2:B:603:MYR:H51	1.85	0.58
1:B:135:LEU:HD11	1:B:162:LYS:HD3	1.83	0.58
1:A:426:VAL:HG11	2:A:603:MYR:C14	2.35	0.57
1:B:222:ARG:HA	1:B:295:ASN:OD1	2.02	0.57
1:A:538:LYS:NZ	5:A:714:HOH:O	2.38	0.57
1:B:244:GLU:HB2	5:B:716:HOH:O	2.04	0.57
1:A:426:VAL:CB	2:A:603:MYR:H141	2.35	0.57
1:A:241:VAL:HG11	2:A:606:MYR:H143	1.87	0.57
1:A:241:VAL:HG22	1:A:256:ASP:HB3	1.86	0.56
1:A:408:LEU:HD21	1:A:530:VAL:HG23	1.87	0.56
1:B:420:THR:N	1:B:421:PRO:HD2	2.21	0.56
1:A:312:SER:O	5:A:701:HOH:O	2.18	0.56
1:A:395:PHE:CZ	1:A:435:SER:HA	2.42	0.55
1:B:408:LEU:HD21	1:B:526:GLN:HB3	1.87	0.55
1:A:31:LEU:HB2	1:A:39:HIS:CE1	2.42	0.55
1:B:274:LYS:HE3	1:B:296:ASP:OD1	2.06	0.55
1:B:518:GLU:OE2	1:B:521:ARG:NH2	2.40	0.55
1:B:42:LEU:O	1:B:46:VAL:HG23	2.07	0.54
1:A:10:ARG:NH2	1:A:255:ASP:OD1	2.41	0.54
1:B:7:VAL:HG12	5:B:717:HOH:O	2.05	0.54
1:B:532:LEU:HD22	2:B:604:MYR:H82	1.90	0.54
1:A:151:ALA:HB3	1:A:152:PRO:HD3	1.89	0.54
1:B:465:GLU:OE1	1:B:474:THR:HG22	2.08	0.54
1:A:45:GLU:OE1	1:A:73:LYS:NZ	2.33	0.54
1:A:197:ARG:HG2	5:A:1006:HOH:O	2.08	0.54
1:B:86:GLU:O	1:B:89:ASP:HB2	2.07	0.54
1:B:532:LEU:HD13	2:B:604:MYR:H102	1.90	0.54
1:A:41:LYS:HE2	1:A:45:GLU:OE2	2.08	0.53
1:B:27:PHE:CD1	1:B:74:LEU:HD21	2.43	0.53
1:B:37:GLU:OE1	1:B:37:GLU:N	2.31	0.53
1:A:99:ASN:O	1:A:103:LEU:HD23	2.08	0.53
1:A:423:LEU:HD23	2:A:603:MYR:H131	1.89	0.53
1:A:408:LEU:HD11	1:A:530:VAL:CG2	2.39	0.53
1:B:294:GLU:HG2	1:B:295:ASN:N	2.24	0.53
1:A:460:LEU:HD13	2:A:603:MYR:C14	2.38	0.53
1:A:157:PHE:HE1	1:A:188:GLU:HB3	1.73	0.53
1:A:426:VAL:CG1	2:A:603:MYR:H141	2.38	0.53
1:B:526:GLN:O	1:B:530:VAL:HG23	2.09	0.53

*Continued on next page...*

*Continued from previous page...*

Atom-1	Atom-2	Interatomic distance (Å)	Clash overlap (Å)
1:A:408:LEU:HD23	1:A:529:LEU:HD23	1.91	0.52
1:A:331:LEU:HD13	1:A:350:ALA:HB2	1.92	0.52
1:B:283:LEU:HD23	1:B:283:LEU:O	2.09	0.52
1:B:408:LEU:O	1:B:412:THR:HG23	2.09	0.52
1:B:152:PRO:O	1:B:155:LEU:N	2.43	0.52
1:B:543:GLN:O	1:B:547:VAL:HG23	2.09	0.52
1:A:23:VAL:HG22	2:A:601:MYR:H131	1.92	0.51
1:A:214:TRP:HH2	2:A:606:MYR:O1	1.94	0.51
1:A:419:SER:HB2	1:A:421:PRO:HD2	1.93	0.51
1:A:460:LEU:CD1	2:A:603:MYR:H143	2.40	0.51
1:A:218[A]:ARG:NH1	5:A:721:HOH:O	2.42	0.51
1:B:6:GLU:O	1:B:10:ARG:HG2	2.10	0.51
1:A:378:LYS:O	1:A:382:GLU:HG3	2.11	0.50
1:A:367:HIS:HA	1:A:370:TYR:CE1	2.46	0.50
1:B:521:ARG:HG2	1:B:525:LYS:HE2	1.94	0.50
1:A:66:LEU:HD11	2:A:601:MYR:C14	2.41	0.50
1:B:464:HIS:HE1	1:B:474:THR:HG23	1.76	0.50
1:B:222:ARG:HD3	1:B:295:ASN:OD1	2.11	0.50
1:A:435:SER:O	1:A:439:LYS:HE2	2.13	0.49
1:B:324:ASP:O	2:B:605:MYR:H111	2.12	0.49
1:B:383:GLU:HB3	1:B:384:PRO:HD3	1.95	0.49
1:B:145:ARG:HG3	1:B:145:ARG:HH11	1.77	0.49
1:A:404:GLN:HG2	1:A:428:ARG:HA	1.93	0.49
1:A:582:ALA:O	1:A:583:LEU:HD23	2.13	0.49
1:B:399:GLY:O	1:B:403:PHE:CB	2.61	0.49
1:A:218[B]:ARG:NH1	1:A:222:ARG:HH21	2.11	0.48
1:B:383:GLU:HB3	1:B:384:PRO:CD	2.43	0.48
2:A:603:MYR:H21	5:A:910:HOH:O	2.13	0.48
1:B:439:LYS:HE3	1:B:439:LYS:HA	1.95	0.48
1:A:426:VAL:HG21	2:A:603:MYR:H141	1.95	0.48
1:B:244:GLU:O	1:B:247:HIS:HB3	2.14	0.48
1:A:241:VAL:HG12	2:A:606:MYR:H143	1.95	0.48
1:A:408:LEU:HD11	1:A:530:VAL:HG21	1.96	0.47
1:B:394:LEU:HD23	1:B:403:PHE:HE1	1.77	0.47
1:B:457:LEU:HD13	1:B:488:PHE:CD2	2.49	0.47
1:B:333:GLU:HB3	1:B:337:ARG:NH1	2.29	0.47
1:A:251:LEU:HD21	2:A:601:MYR:H102	1.97	0.47
1:B:34:CYS:HB2	1:B:39:HIS:NE2	2.30	0.47
1:B:399:GLY:O	1:B:403:PHE:HB2	2.14	0.47
1:B:580:GLN:HG3	2:B:604:MYR:H142	1.96	0.47
1:B:42:LEU:HD23	1:B:42:LEU:N	2.30	0.47

*Continued on next page...*

*Continued from previous page...*

Atom-1	Atom-2	Interatomic distance (Å)	Clash overlap (Å)
1:B:294:GLU:HG2	1:B:295:ASN:H	1.80	0.47
1:A:499:PRO:HB3	1:A:535:HIS:O	2.15	0.46
1:B:361:CYS:HA	1:B:366:PRO:HB3	1.96	0.46
1:B:77:VAL:HB	1:B:80:LEU:HD13	1.97	0.46
1:B:398:LEU:HB3	1:B:402:LYS:HB2	1.96	0.46
1:A:536:LYS:HD3	1:A:536:LYS:HA	1.66	0.46
1:A:204:GLN:OE1	1:A:204:GLN:HA	2.15	0.46
1:A:305:LEU:HD21	1:A:337:ARG:HD2	1.97	0.46
1:B:151:ALA:HB3	1:B:152:PRO:HD3	1.97	0.46
1:B:218[B]:ARG:NE	1:B:222:ARG:HH11	2.13	0.46
1:B:457:LEU:HD21	2:B:603:MYR:H81	1.97	0.46
1:A:48:GLU:O	1:A:52:THR:HG23	2.16	0.46
1:A:218[A]:ARG:O	1:A:218[A]:ARG:HD3	2.16	0.46
1:B:316:CYS:HB2	5:B:793:HOH:O	2.15	0.46
1:A:436:LYS:HE2	1:A:452:TYR:CZ	2.51	0.46
1:B:408:LEU:CD2	1:B:526:GLN:HB3	2.44	0.46
1:A:86:GLU:HG3	1:A:105:HIS:NE2	2.30	0.46
1:B:347:LEU:HD22	2:B:605:MYR:H21	1.97	0.45
1:B:84:TYR:CB	1:B:87:MET:HE2	2.46	0.45
1:B:218[A]:ARG:NH2	5:B:713:HOH:O	2.49	0.45
1:B:22:LEU:HD13	2:B:601:MYR:H72	1.99	0.45
1:B:205:LYS:NZ	1:B:478:THR:O	2.46	0.45
1:B:218[B]:ARG:HD2	1:B:218[B]:ARG:HA	1.59	0.45
1:A:359:LYS:HD3	5:A:944:HOH:O	2.15	0.45
1:A:540:THR:HG23	1:A:543:GLN:OE1	2.16	0.45
1:B:221:GLN:HG3	1:B:335:ALA:HB1	1.99	0.45
1:B:84:TYR:HB2	1:B:87:MET:HE2	1.99	0.45
1:A:39:HIS:O	1:A:43:VAL:HG23	2.16	0.45
1:A:281:LYS:HB3	1:A:282:PRO:HD2	1.97	0.45
1:B:200:CYS:O	1:B:204:GLN:HG2	2.17	0.45
1:B:371:ALA:O	5:B:701:HOH:O	2.21	0.44
1:A:218[B]:ARG:NH2	1:A:222:ARG:HE	2.16	0.44
2:A:606:MYR:H111	2:A:606:MYR:H82	1.77	0.44
5:A:809:HOH:O	1:B:538:LYS:HE3	2.17	0.44
1:B:305:LEU:HD21	1:B:333:GLU:HB3	2.00	0.44
1:B:394:LEU:HD23	1:B:403:PHE:HD1	1.81	0.44
1:B:217:ALA:HB3	1:B:343:VAL:HG13	1.99	0.44
1:B:541:LYS:HA	1:B:541:LYS:HD2	1.58	0.44
1:B:218[B]:ARG:NH2	1:B:222:ARG:HH11	2.16	0.43
1:B:208:GLU:HG3	1:B:239:THR:HG21	2.00	0.43
1:B:283:LEU:HD23	1:B:283:LEU:C	2.38	0.43

*Continued on next page...*

*Continued from previous page...*

Atom-1	Atom-2	Interatomic distance (Å)	Clash overlap (Å)
1:B:31:LEU:HD11	1:B:74:LEU:HD22	2.01	0.43
1:A:155:LEU:HG	1:A:159:LYS:HE3	2.00	0.43
1:A:575:LEU:HD21	2:A:604:MYR:H101	2.01	0.43
1:A:433:VAL:HG22	1:A:452:TYR:HB3	2.00	0.43
1:B:90:CYS:HA	1:B:93:LYS:HD2	2.01	0.43
1:A:223:PHE:HD1	1:A:272:SER:HB2	1.83	0.43
1:B:498:VAL:O	1:B:498:VAL:HG13	2.19	0.43
1:B:169:CYS:O	1:B:174:LYS:HE3	2.19	0.42
1:A:120:VAL:HG21	1:A:175:ALA:HB2	2.01	0.42
1:A:347:LEU:HD23	1:A:347:LEU:HA	1.89	0.42
1:B:502:PHE:HB2	1:B:535:HIS:CE1	2.54	0.42
1:A:130:ASN:HB3	5:A:986:HOH:O	2.19	0.42
1:B:152:PRO:O	1:B:155:LEU:HB3	2.19	0.42
1:B:216:VAL:HG22	1:B:235:VAL:HG21	2.01	0.42
1:B:439:LYS:HA	1:B:439:LYS:CE	2.49	0.42
1:A:485:ARG:HD2	1:A:485:ARG:C	2.40	0.42
1:A:57:GLU:H	1:A:57:GLU:HG2	1.55	0.42
1:A:424:VAL:O	1:A:428:ARG:HG3	2.20	0.42
1:B:380:LEU:O	1:B:384:PRO:HD2	2.20	0.42
1:A:208:GLU:HG3	1:A:239:THR:HG21	2.01	0.42
1:A:218[B]:ARG:NH1	1:A:222:ARG:NH2	2.68	0.42
1:A:240:LYS:NZ	5:A:734:HOH:O	2.49	0.42
1:B:387:LEU:HD23	1:B:387:LEU:HA	1.93	0.42
1:A:408:LEU:HG	1:A:530:VAL:HG22	2.02	0.42
1:B:199:LYS:N	1:B:199:LYS:HD3	2.33	0.42
1:A:413:LYS:NZ	1:B:365:ASP:OD2	2.49	0.41
1:A:386:ASN:HA	1:A:389:LYS:HE3	2.01	0.41
1:A:307:ALA:HB2	5:A:883:HOH:O	2.20	0.41
2:A:606:MYR:H32	2:A:606:MYR:H61	1.75	0.41
1:A:485:ARG:HD2	1:A:485:ARG:O	2.21	0.41
1:B:373:VAL:HG13	1:B:374:PHE:N	2.36	0.41
1:B:498:VAL:O	1:B:498:VAL:CG1	2.69	0.41
1:B:408:LEU:HG	1:B:530:VAL:CG2	2.51	0.41
1:B:483:ASN:C	1:B:486:PRO:HD2	2.41	0.41
1:B:118:PRO:HD3	1:B:138:TYR:OH	2.21	0.40
1:B:389:LYS:HD3	1:B:389:LYS:HA	1.77	0.40
1:A:100:GLU:O	1:A:104:GLN:HG2	2.21	0.40
1:A:214:TRP:CD1	1:A:343:VAL:HG11	2.56	0.40
1:A:319:TYR:CE2	1:A:323:LYS:HE2	2.57	0.40
1:A:410:ARG:HD2	1:A:411:TYR:CE1	2.56	0.40
1:B:548:MET:HG2	2:B:604:MYR:H42	2.02	0.40

*Continued on next page...*

Continued from previous page...

Atom-1	Atom-2	Interatomic distance (Å)	Clash overlap (Å)
1:B:150:TYR:CD2	1:B:152:PRO:HD2	2.57	0.40
2:B:606:MYR:H141	5:B:811:HOH:O	2.21	0.40
1:B:395:PHE:CE2	1:B:435:SER:HB2	2.56	0.40

There are no symmetry-related clashes.

## 5.3 Torsion angles [i](#)

### 5.3.1 Protein backbone [i](#)

In the following table, the Percentiles column shows the percent Ramachandran outliers of the chain as a percentile score with respect to all X-ray entries followed by that with respect to entries of similar resolution.

The Analysed column shows the number of residues for which the backbone conformation was analysed, and the total number of residues.

Mol	Chain	Analysed	Favoured	Allowed	Outliers	Percentiles	
1	A	583/609 (96%)	571 (98%)	12 (2%)	0	100	100
1	B	581/609 (95%)	564 (97%)	17 (3%)	0	100	100
All	All	1164/1218 (96%)	1135 (98%)	29 (2%)	0	100	100

There are no Ramachandran outliers to report.

### 5.3.2 Protein sidechains [i](#)

In the following table, the Percentiles column shows the percent sidechain outliers of the chain as a percentile score with respect to all X-ray entries followed by that with respect to entries of similar resolution.

The Analysed column shows the number of residues for which the sidechain conformation was analysed, and the total number of residues.

Mol	Chain	Analysed	Rotameric	Outliers	Percentiles	
1	A	500/533 (94%)	496 (99%)	4 (1%)	81	82
1	B	499/533 (94%)	494 (99%)	5 (1%)	76	76
All	All	999/1066 (94%)	990 (99%)	9 (1%)	78	79

All (9) residues with a non-rotameric sidechain are listed below:



Mol	Chain	Res	Type
1	A	138	TYR
1	A	140	TYR
1	A	144	ARG
1	A	334	TYR
1	B	140	TYR
1	B	193	SER
1	B	240	LYS
1	B	334	TYR
1	B	466	LYS

Sometimes sidechains can be flipped to improve hydrogen bonding and reduce clashes. There are no such sidechains identified.

### 5.3.3 RNA [i](#)

There are no RNA molecules in this entry.

## 5.4 Non-standard residues in protein, DNA, RNA chains [i](#)

There are no non-standard protein/DNA/RNA residues in this entry.

## 5.5 Carbohydrates [i](#)

There are no monosaccharides in this entry.

## 5.6 Ligand geometry [i](#)

15 ligands are modelled in this entry.

In the following table, the Counts columns list the number of bonds (or angles) for which Mogul statistics could be retrieved, the number of bonds (or angles) that are observed in the model and the number of bonds (or angles) that are defined in the Chemical Component Dictionary. The Link column lists molecule types, if any, to which the group is linked. The Z score for a bond length (or angle) is the number of standard deviations the observed value is removed from the expected value. A bond length (or angle) with  $|Z| > 2$  is considered an outlier worth inspection. RMSZ is the root-mean-square of all Z scores of the bond lengths (or angles).

Mol	Type	Chain	Res	Link	Bond lengths			Bond angles		
					Counts	RMSZ	# Z  > 2	Counts	RMSZ	# Z  > 2
4	GOQ	A	608	-	25,28,28	0.96	1 (4%)	30,42,42	1.29	2 (6%)
4	GOQ	B	607	-	25,28,28	0.79	1 (4%)	30,42,42	1.21	2 (6%)

Mol	Type	Chain	Res	Link	Bond lengths			Bond angles		
					Counts	RMSZ	# Z  > 2	Counts	RMSZ	# Z  > 2
2	MYR	A	604	-	12,15,15	0.18	0	11,15,15	0.27	0
2	MYR	A	603	-	12,15,15	0.17	0	11,15,15	0.32	0
2	MYR	A	606	-	12,15,15	0.23	0	11,15,15	0.36	0
2	MYR	B	604	-	12,15,15	0.16	0	11,15,15	0.22	0
2	MYR	B	605	-	12,15,15	0.23	0	11,15,15	0.24	0
2	MYR	B	603	-	12,15,15	0.18	0	11,15,15	0.17	0
2	MYR	A	601	-	12,15,15	0.26	0	11,15,15	0.49	0
2	MYR	B	602	-	12,15,15	0.14	0	11,15,15	0.28	0
2	MYR	A	605	-	12,15,15	0.26	0	11,15,15	0.21	0
3	EDO	A	607	-	3,3,3	0.60	0	2,2,2	0.11	0
2	MYR	B	601	-	12,15,15	0.21	0	11,15,15	0.19	0
2	MYR	A	602	-	12,15,15	0.28	0	11,15,15	0.33	0
2	MYR	B	606	-	12,15,15	0.13	0	11,15,15	0.30	0

In the following table, the Chirals column lists the number of chiral outliers, the number of chiral centers analysed, the number of these observed in the model and the number defined in the Chemical Component Dictionary. Similar counts are reported in the Torsion and Rings columns. '-' means no outliers of that kind were identified.

Mol	Type	Chain	Res	Link	Chirals	Torsions	Rings
4	GOQ	A	608	-	-	2/4/16/16	0/4/4/4
4	GOQ	B	607	-	-	1/4/16/16	0/4/4/4
2	MYR	A	604	-	-	2/11/13/13	-
2	MYR	A	603	-	-	6/11/13/13	-
2	MYR	A	606	-	-	4/11/13/13	-
2	MYR	B	604	-	-	1/11/13/13	-
2	MYR	B	605	-	-	1/11/13/13	-
2	MYR	B	603	-	-	2/11/13/13	-
2	MYR	A	601	-	-	2/11/13/13	-
2	MYR	B	602	-	-	4/11/13/13	-
2	MYR	A	605	-	-	1/11/13/13	-
3	EDO	A	607	-	-	0/1/1/1	-
2	MYR	B	601	-	-	2/11/13/13	-
2	MYR	A	602	-	-	6/11/13/13	-
2	MYR	B	606	-	-	4/11/13/13	-

All (2) bond length outliers are listed below:

Mol	Chain	Res	Type	Atoms	Z	Observed(Å)	Ideal(Å)
4	A	608	GOQ	C11-C16	3.23	1.50	1.47

*Continued on next page...*

*Continued from previous page...*

Mol	Chain	Res	Type	Atoms	Z	Observed(Å)	Ideal(Å)
4	B	607	GOQ	C11-C16	2.79	1.50	1.47

All (4) bond angle outliers are listed below:

Mol	Chain	Res	Type	Atoms	Z	Observed(°)	Ideal(°)
4	A	608	GOQ	C8-C7-C6	-4.91	115.34	118.69
4	B	607	GOQ	C8-C7-C6	-4.75	115.45	118.69
4	A	608	GOQ	C12-C11-C7	2.68	121.07	117.53
4	B	607	GOQ	C12-C11-C7	2.13	120.34	117.53

There are no chirality outliers.

All (38) torsion outliers are listed below:

Mol	Chain	Res	Type	Atoms
4	A	608	GOQ	C7-C8-N-O1
2	B	601	MYR	C7-C8-C9-C10
2	A	602	MYR	C9-C10-C11-C12
4	A	608	GOQ	C9-C8-N-O1
2	B	606	MYR	C6-C7-C8-C9
2	B	606	MYR	C3-C4-C5-C6
2	A	602	MYR	C4-C5-C6-C7
2	B	603	MYR	C3-C4-C5-C6
2	A	606	MYR	C4-C5-C6-C7
2	B	602	MYR	C10-C11-C12-C13
2	A	602	MYR	C3-C4-C5-C6
2	A	603	MYR	C7-C8-C9-C10
2	B	606	MYR	C2-C3-C4-C5
4	B	607	GOQ	C9-C8-N-O1
2	B	606	MYR	C9-C10-C11-C12
2	A	603	MYR	C10-C11-C12-C13
2	A	602	MYR	C10-C11-C12-C13
2	A	601	MYR	C2-C3-C4-C5
2	B	603	MYR	C7-C8-C9-C10
2	A	603	MYR	C2-C3-C4-C5
2	B	601	MYR	C4-C5-C6-C7
2	A	606	MYR	C5-C6-C7-C8
2	A	603	MYR	C5-C6-C7-C8
2	A	601	MYR	C10-C11-C12-C13
2	B	605	MYR	C5-C6-C7-C8
2	A	606	MYR	C3-C4-C5-C6
2	B	604	MYR	C10-C11-C12-C13
2	A	602	MYR	C6-C7-C8-C9

*Continued on next page...*

*Continued from previous page...*

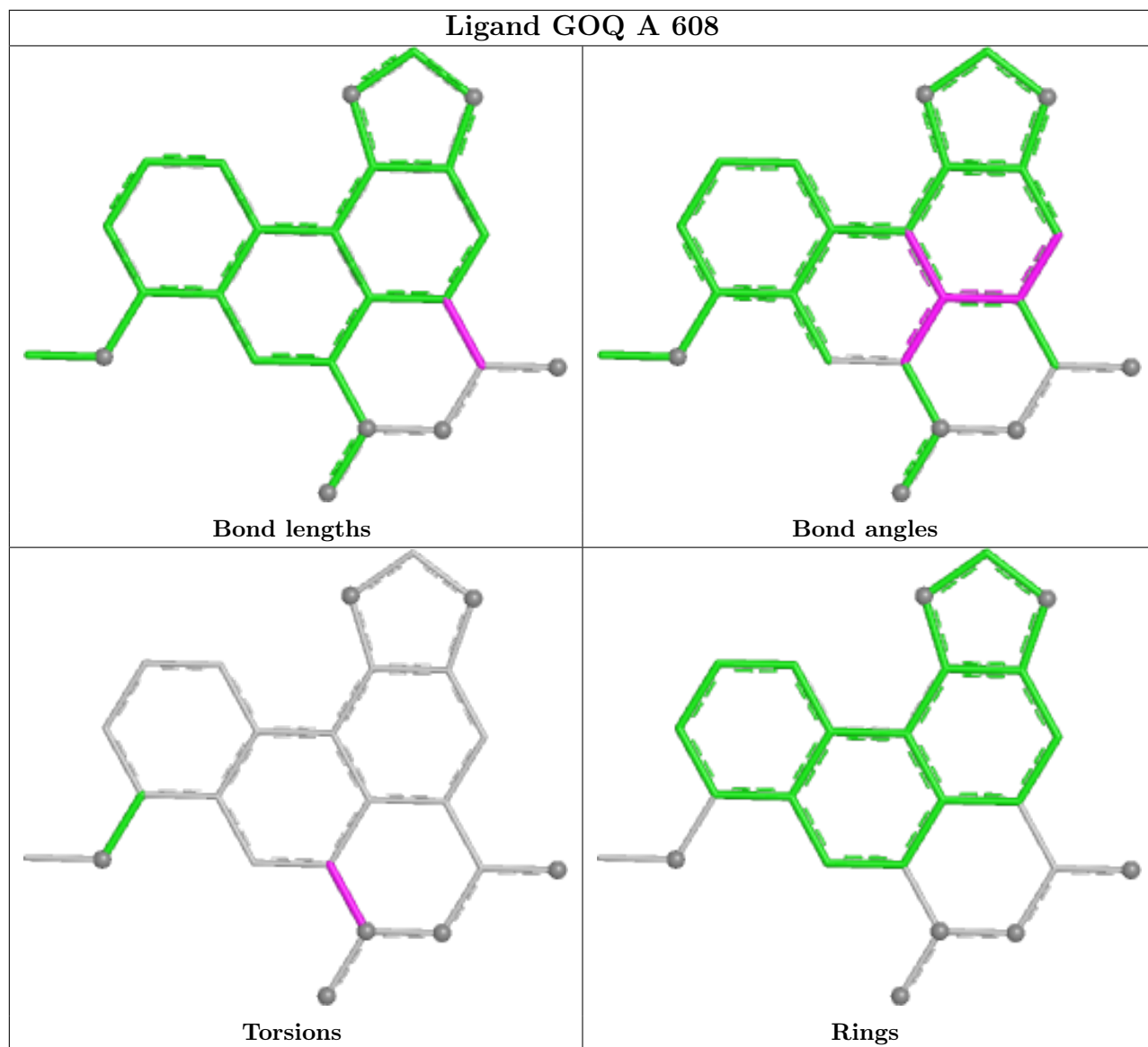
Mol	Chain	Res	Type	Atoms
2	A	603	MYR	C11-C10-C9-C8
2	A	604	MYR	C2-C3-C4-C5
2	A	603	MYR	C3-C4-C5-C6
2	A	605	MYR	C5-C6-C7-C8
2	B	602	MYR	C1-C2-C3-C4
2	A	604	MYR	C4-C5-C6-C7
2	A	602	MYR	C11-C10-C9-C8
2	B	602	MYR	C3-C4-C5-C6
2	B	602	MYR	C9-C10-C11-C12
2	A	606	MYR	C11-C10-C9-C8

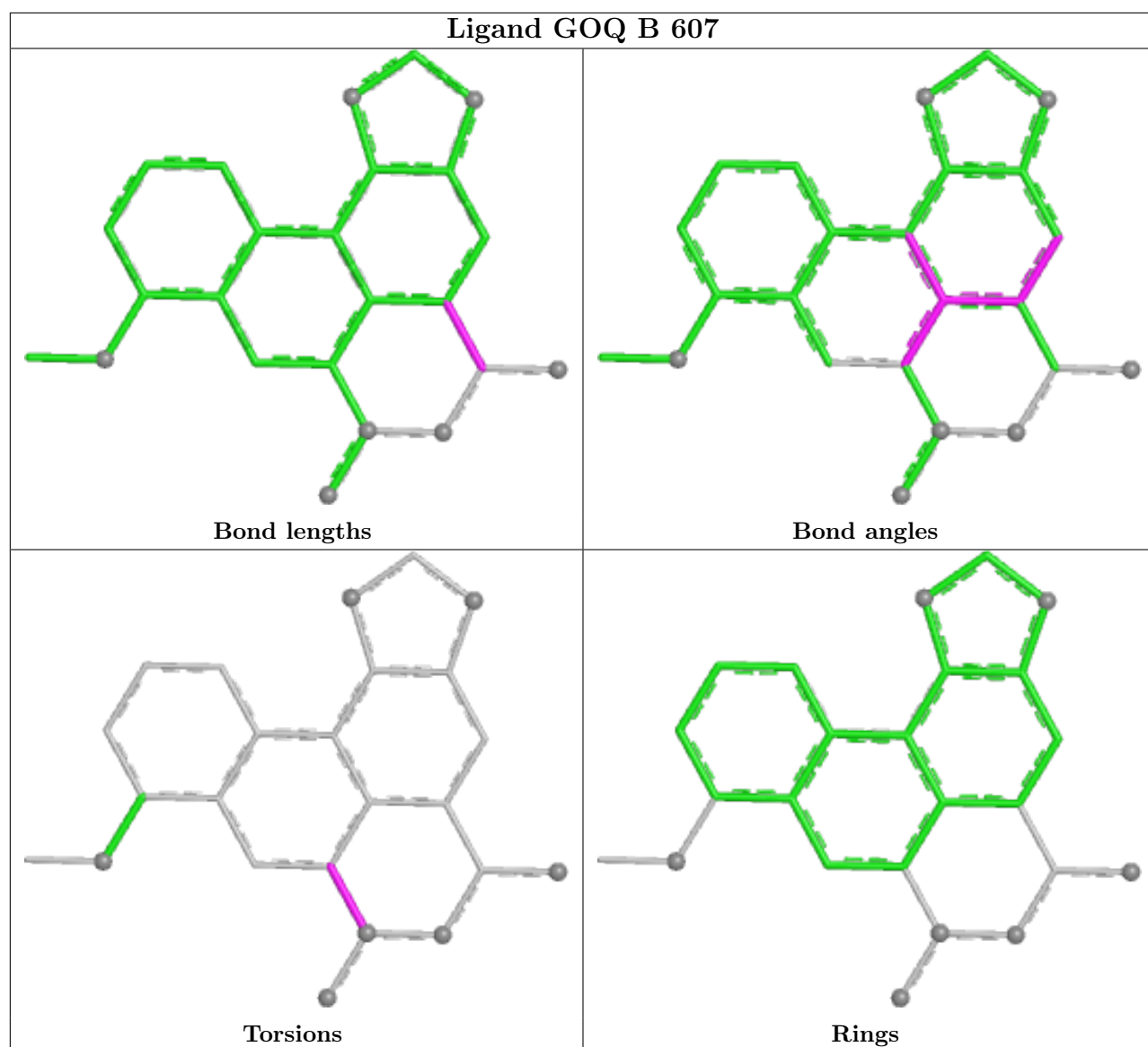
There are no ring outliers.

11 monomers are involved in 35 short contacts:

Mol	Chain	Res	Type	Clashes	Symm-Clashes
2	A	604	MYR	1	0
2	A	603	MYR	12	0
2	A	606	MYR	6	0
2	B	604	MYR	4	0
2	B	605	MYR	2	0
2	B	603	MYR	3	0
2	A	601	MYR	4	0
2	B	602	MYR	1	0
2	B	601	MYR	1	0
2	A	602	MYR	1	0
2	B	606	MYR	1	0

The following is a two-dimensional graphical depiction of Mogul quality analysis of bond lengths, bond angles, torsion angles, and ring geometry for all instances of the Ligand of Interest. In addition, ligands with molecular weight > 250 and outliers as shown on the validation Tables will also be included. For torsion angles, if less than 5% of the Mogul distribution of torsion angles is within 10 degrees of the torsion angle in question, then that torsion angle is considered an outlier. Any bond that is central to one or more torsion angles identified as an outlier by Mogul will be highlighted in the graph. For rings, the root-mean-square deviation (RMSD) between the ring in question and similar rings identified by Mogul is calculated over all ring torsion angles. If the average RMSD is greater than 60 degrees and the minimal RMSD between the ring in question and any Mogul-identified rings is also greater than 60 degrees, then that ring is considered an outlier. The outliers are highlighted in purple. The color gray indicates Mogul did not find sufficient equivalents in the CSD to analyse the geometry.





## 5.7 Other polymers [i](#)

There are no such residues in this entry.

## 5.8 Polymer linkage issues [i](#)

There are no chain breaks in this entry.

## 6 Fit of model and data

### 6.1 Protein, DNA and RNA chains

In the following table, the column labelled ‘#RSRZ > 2’ contains the number (and percentage) of RSRZ outliers, followed by percent RSRZ outliers for the chain as percentile scores relative to all X-ray entries and entries of similar resolution. The OWAB column contains the minimum, median, 95<sup>th</sup> percentile and maximum values of the occupancy-weighted average B-factor per residue. The column labelled ‘Q < 0.9’ lists the number of (and percentage) of residues with an average occupancy less than 0.9.

Mol	Chain	Analysed	<RSRZ>	#RSRZ>2	OWAB(Å <sup>2</sup> )	Q<0.9
1	A	582/609 (95%)	0.34	20 (3%) 45 48	6, 23, 50, 73	0
1	B	582/609 (95%)	0.70	41 (7%) 16 18	32, 44, 58, 76	0
All	All	1164/1218 (95%)	0.52	61 (5%) 27 30	6, 38, 57, 76	0

All (61) RSRZ outliers are listed below:

Mol	Chain	Res	Type	RSRZ
1	B	364	ALA	4.6
1	B	362	ALA	4.2
1	B	516	LEU	4.0
1	A	559	CYS	3.9
1	B	555	VAL	3.8
1	B	568	PHE	3.5
1	A	555	VAL	3.4
1	A	502	PHE	3.3
1	B	566	THR	3.3
1	A	554	PHE	3.2
1	B	551	PHE	3.2
1	A	553	ALA	3.1
1	B	513	ILE	3.0
1	B	559	CYS	3.0
1	B	498	VAL	3.0
1	B	507	PHE	3.0
1	B	78	ALA	2.9
1	B	480	SER	2.8
1	A	513	ILE	2.8
1	A	562	ASP	2.8
1	B	115	LEU	2.7
1	B	299	PRO	2.7
1	A	507	PHE	2.7
1	A	561	ALA	2.7

*Continued on next page...*

*Continued from previous page...*

Mol	Chain	Res	Type	RSRZ
1	B	553	ALA	2.6
1	B	169	CYS	2.6
1	B	374	PHE	2.5
1	A	511	ALA	2.5
1	B	502	PHE	2.5
1	B	363	ALA	2.5
1	B	504	ALA	2.5
1	B	138	TYR	2.5
1	A	537	PRO	2.4
1	A	516	LEU	2.4
1	A	575	LEU	2.4
1	B	583	LEU	2.4
1	B	373	VAL	2.4
1	B	552	ALA	2.3
1	B	509	PHE	2.3
1	A	512	ASP	2.3
1	B	546	ALA	2.3
1	B	554	PHE	2.3
1	A	501	GLU	2.3
1	A	546	ALA	2.2
1	B	506	THR	2.2
1	A	582	ALA	2.2
1	B	261	ALA	2.2
1	B	528	ALA	2.2
1	B	198	LEU	2.2
1	A	515	THR	2.2
1	B	9	HIS	2.2
1	B	164	ALA	2.2
1	B	165	PHE	2.2
1	B	4	LYS	2.2
1	B	584	GLY	2.1
1	B	437	CYS	2.1
1	B	57	GLU	2.1
1	A	568	PHE	2.1
1	B	34	CYS	2.1
1	B	426	VAL	2.1
1	A	509	PHE	2.0

## 6.2 Non-standard residues in protein, DNA, RNA chains

There are no non-standard protein/DNA/RNA residues in this entry.



### 6.3 Carbohydrates [i](#)

There are no monosaccharides in this entry.

### 6.4 Ligands [i](#)

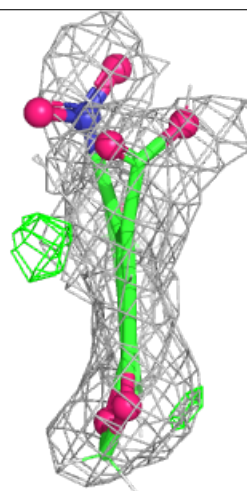
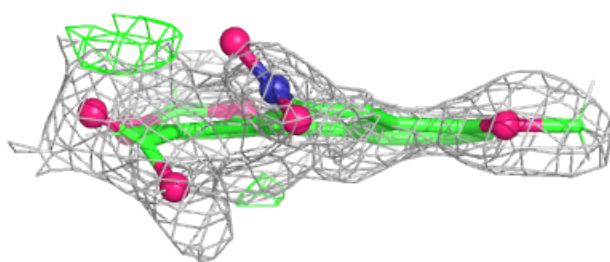
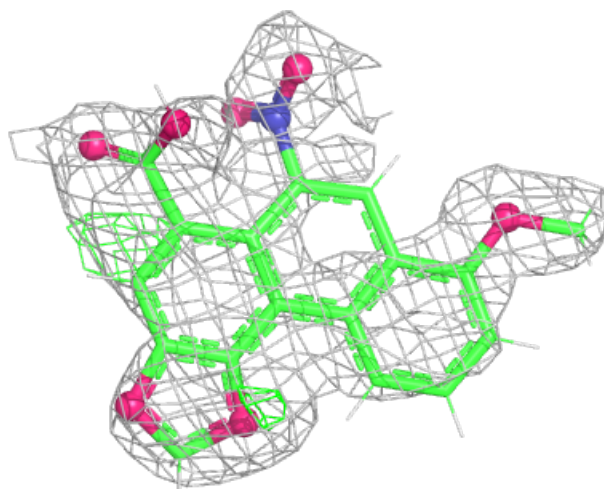
In the following table, the Atoms column lists the number of modelled atoms in the group and the number defined in the chemical component dictionary. The B-factors column lists the minimum, median, 95<sup>th</sup> percentile and maximum values of B factors of atoms in the group. The column labelled 'Q< 0.9' lists the number of atoms with occupancy less than 0.9.

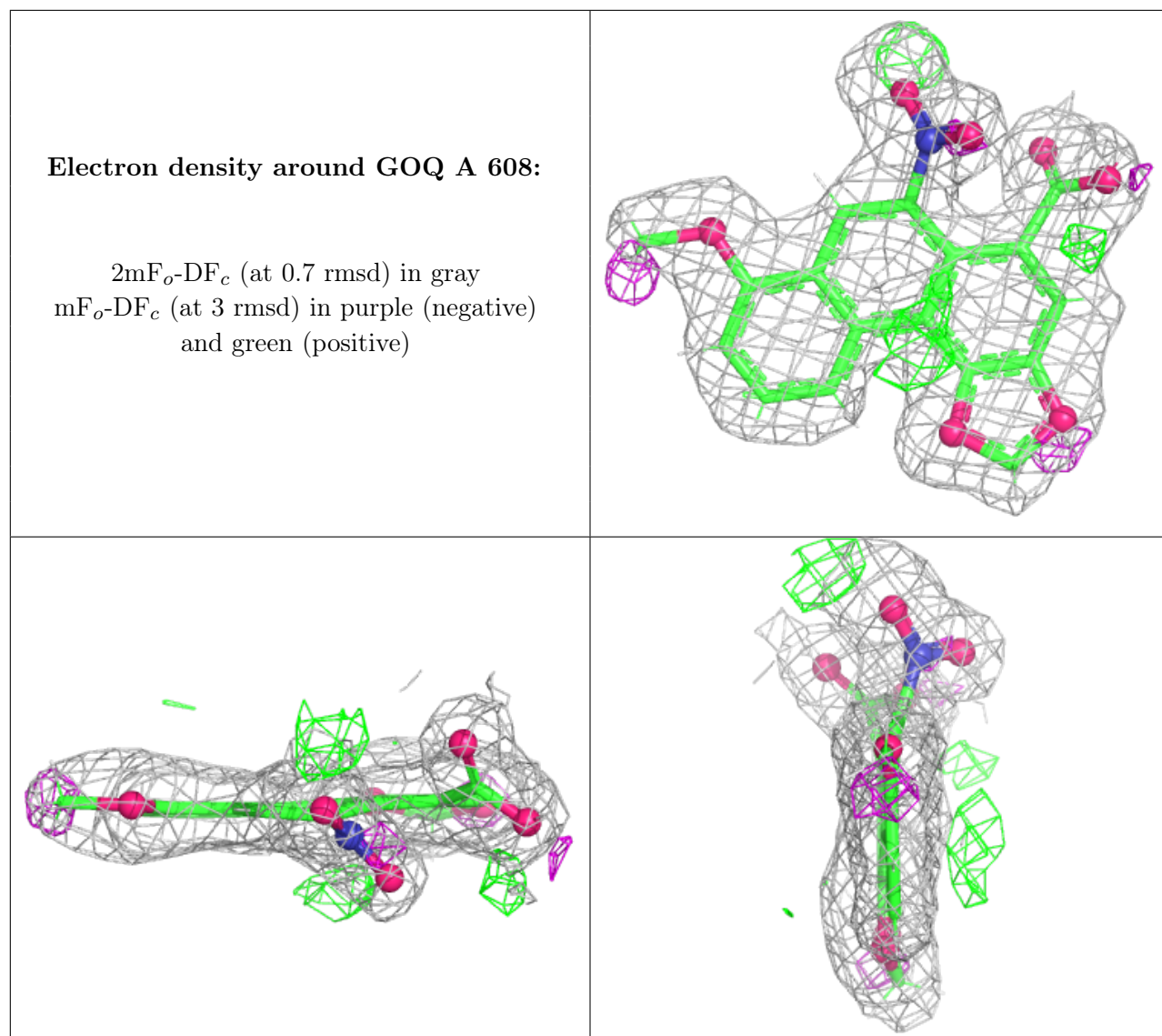
Mol	Type	Chain	Res	Atoms	RSCC	RSR	B-factors(Å <sup>2</sup> )	Q<0.9
2	MYR	B	604	16/16	0.67	0.30	43,51,59,64	0
4	GOQ	B	607	25/25	0.70	0.26	43,51,61,63	36
2	MYR	B	606	16/16	0.71	0.21	42,49,58,67	0
2	MYR	B	605	16/16	0.76	0.27	42,46,53,54	0
2	MYR	A	604	16/16	0.79	0.15	36,40,49,49	0
2	MYR	A	606	16/16	0.79	0.19	18,29,44,45	0
2	MYR	A	603	16/16	0.82	0.22	25,29,38,38	0
2	MYR	A	605	16/16	0.85	0.15	19,25,33,33	0
2	MYR	B	601	16/16	0.86	0.17	38,42,52,52	0
2	MYR	B	603	16/16	0.87	0.17	35,39,54,56	0
4	GOQ	A	608	25/25	0.90	0.14	15,21,25,28	0
2	MYR	A	601	16/16	0.91	0.15	13,20,33,35	0
2	MYR	B	602	16/16	0.91	0.16	32,35,41,41	0
3	EDO	A	607	4/4	0.93	0.13	16,23,28,31	0
2	MYR	A	602	16/16	0.96	0.12	13,21,28,34	0

The following is a graphical depiction of the model fit to experimental electron density of all instances of the Ligand of Interest. In addition, ligands with molecular weight > 250 and outliers as shown on the geometry validation Tables will also be included. Each fit is shown from different orientation to approximate a three-dimensional view.

**Electron density around GOQ B 607:**

$2mF_o-DF_c$  (at 0.7 rmsd) in gray  
 $mF_o-DF_c$  (at 3 rmsd) in purple (negative)  
and green (positive)





## 6.5 Other polymers [\(i\)](#)

There are no such residues in this entry.