



wwPDB X-ray Structure Validation Summary Report ⓘ

Aug 30, 2023 – 12:26 PM EDT

PDB ID : 3P0J
Title : Leishmania major Tyrosyl-tRNA synthetase in complex with tyrosinol, triclinic crystal form 1
Authors : Larson, E.T.; Merritt, E.A.; Medical Structural Genomics of Pathogenic Protozoa (MSGPP)
Deposited on : 2010-09-28
Resolution : 2.89 Å(reported)

This is a wwPDB X-ray Structure Validation Summary Report for a publicly released PDB entry.

We welcome your comments at validation@mail.wwpdb.org

A user guide is available at

<https://www.wwpdb.org/validation/2017/XrayValidationReportHelp>

with specific help available everywhere you see the ⓘ symbol.

The types of validation reports are described at

<http://www.wwpdb.org/validation/2017/FAQs#types>.

The following versions of software and data (see [references ⓘ](#)) were used in the production of this report:

MolProbity : 4.02b-467
Mogul : 1.8.5 (274361), CSD as541be (2020)
Xtriage (Phenix) : 1.13
EDS : 2.35
Percentile statistics : 20191225.v01 (using entries in the PDB archive December 25th 2019)
Refmac : 5.8.0158
CCP4 : 7.0.044 (Gargrove)
Ideal geometry (proteins) : Engh & Huber (2001)
Ideal geometry (DNA, RNA) : Parkinson et al. (1996)
Validation Pipeline (wwPDB-VP) : 2.35

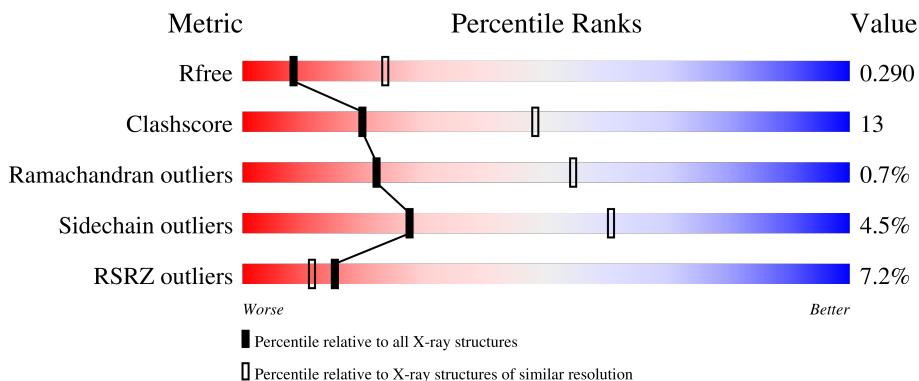
1 Overall quality at a glance

The following experimental techniques were used to determine the structure:

X-RAY DIFFRACTION


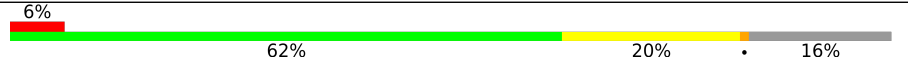
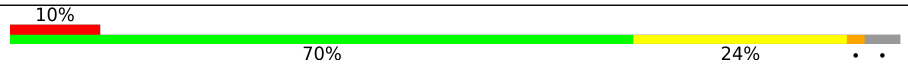

The reported resolution of this entry is 2.89 Å.

Percentile scores (ranging between 0-100) for global validation metrics of the entry are shown in the following graphic. The table shows the number of entries on which the scores are based.



Metric	Whole archive (#Entries)	Similar resolution (#Entries, resolution range(Å))
R_{free}	130704	1957 (2.90-2.90)
Clashscore	141614	2172 (2.90-2.90)
Ramachandran outliers	138981	2115 (2.90-2.90)
Sidechain outliers	138945	2117 (2.90-2.90)
RSRZ outliers	127900	1906 (2.90-2.90)

The table below summarises the geometric issues observed across the polymeric chains and their fit to the electron density. The red, orange, yellow and green segments of the lower bar indicate the fraction of residues that contain outliers for ≥ 3 , 2, 1 and 0 types of geometric quality criteria respectively. A grey segment represents the fraction of residues that are not modelled. The numeric value for each fraction is indicated below the corresponding segment, with a dot representing fractions $\leq 5\%$. The upper red bar (where present) indicates the fraction of residues that have poor fit to the electron density. The numeric value is given above the bar.

Mol	Chain	Length	Quality of chain
1	A	690	 2% 71% 22% • 5%
1	B	690	 6% 62% 20% • 16%
1	C	690	 10% 70% 24% • •
1	D	690	 9% 71% 24% • •

2 Entry composition i

There are 3 unique types of molecules in this entry. The entry contains 19700 atoms, of which 0 are hydrogens and 0 are deuteriums.

In the tables below, the ZeroOcc column contains the number of atoms modelled with zero occupancy, the AltConf column contains the number of residues with at least one atom in alternate conformation and the Trace column contains the number of residues modelled with at most 2 atoms.

- Molecule 1 is a protein called Tyrosyl-tRNA synthetase.

Mol	Chain	Residues	Atoms					ZeroOcc	AltConf	Trace
			Total	C	N	O	S			
1	A	657	5067	3188	881	961	37	0	0	0
1	B	581	4381	2763	746	837	35	0	0	0
1	C	663	5106	3216	884	969	37	0	1	0
1	D	665	5096	3206	885	967	38	0	0	0

There are 32 discrepancies between the modelled and reference sequences:

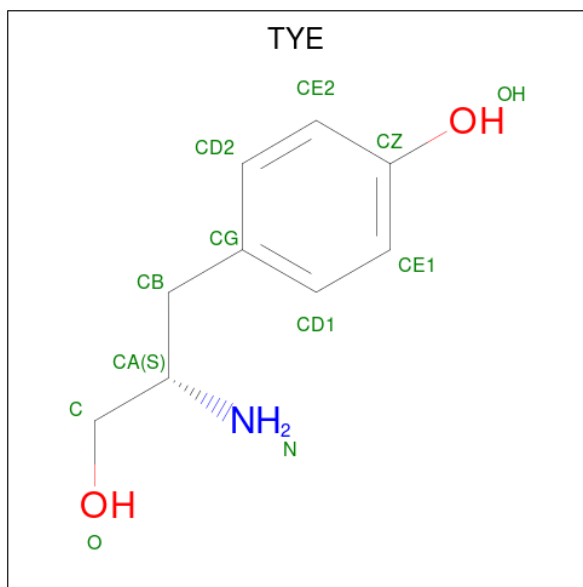
Chain	Residue	Modelled	Actual	Comment	Reference
A	-7	MET	-	expression tag	UNP Q4QFJ7
A	-6	ALA	-	expression tag	UNP Q4QFJ7
A	-5	HIS	-	expression tag	UNP Q4QFJ7
A	-4	HIS	-	expression tag	UNP Q4QFJ7
A	-3	HIS	-	expression tag	UNP Q4QFJ7
A	-2	HIS	-	expression tag	UNP Q4QFJ7
A	-1	HIS	-	expression tag	UNP Q4QFJ7
A	0	HIS	-	expression tag	UNP Q4QFJ7
B	-7	MET	-	expression tag	UNP Q4QFJ7
B	-6	ALA	-	expression tag	UNP Q4QFJ7
B	-5	HIS	-	expression tag	UNP Q4QFJ7
B	-4	HIS	-	expression tag	UNP Q4QFJ7
B	-3	HIS	-	expression tag	UNP Q4QFJ7
B	-2	HIS	-	expression tag	UNP Q4QFJ7
B	-1	HIS	-	expression tag	UNP Q4QFJ7
B	0	HIS	-	expression tag	UNP Q4QFJ7
C	-7	MET	-	expression tag	UNP Q4QFJ7
C	-6	ALA	-	expression tag	UNP Q4QFJ7
C	-5	HIS	-	expression tag	UNP Q4QFJ7
C	-4	HIS	-	expression tag	UNP Q4QFJ7
C	-3	HIS	-	expression tag	UNP Q4QFJ7

Continued on next page...

Continued from previous page...

Chain	Residue	Modelled	Actual	Comment	Reference
C	-2	HIS	-	expression tag	UNP Q4QFJ7
C	-1	HIS	-	expression tag	UNP Q4QFJ7
C	0	HIS	-	expression tag	UNP Q4QFJ7
D	-7	MET	-	expression tag	UNP Q4QFJ7
D	-6	ALA	-	expression tag	UNP Q4QFJ7
D	-5	HIS	-	expression tag	UNP Q4QFJ7
D	-4	HIS	-	expression tag	UNP Q4QFJ7
D	-3	HIS	-	expression tag	UNP Q4QFJ7
D	-2	HIS	-	expression tag	UNP Q4QFJ7
D	-1	HIS	-	expression tag	UNP Q4QFJ7
D	0	HIS	-	expression tag	UNP Q4QFJ7

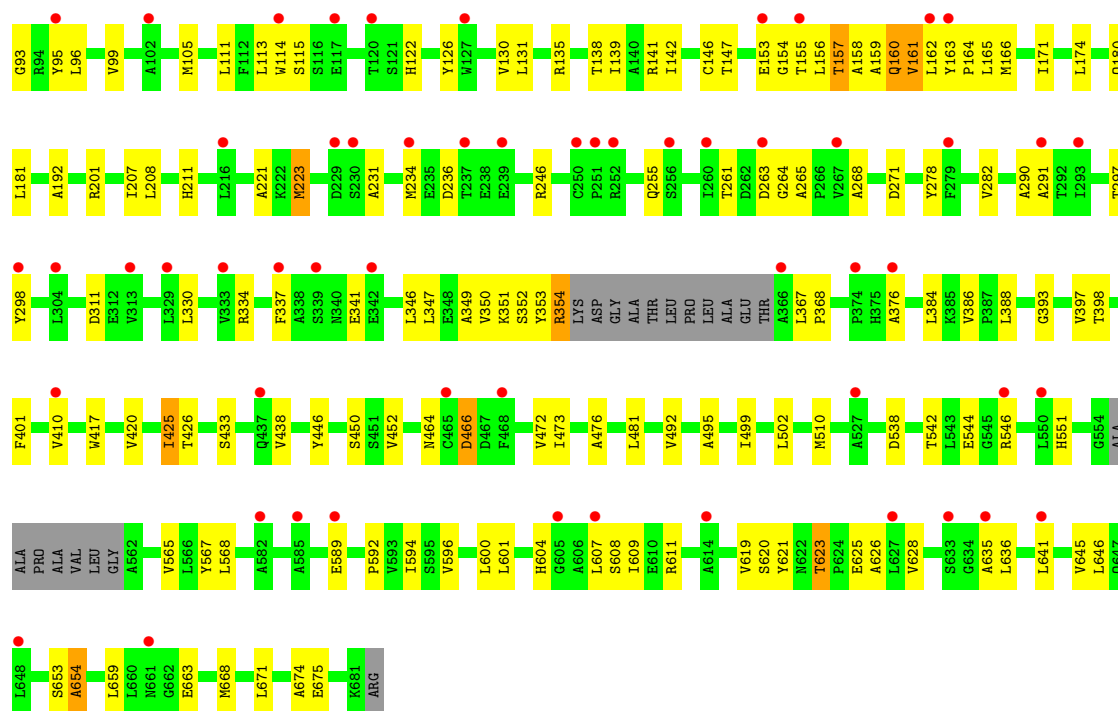
- Molecule 2 is 4-[(2S)-2-amino-3-hydroxypropyl]phenol (three-letter code: TYE) (formula: $C_9H_{13}NO_2$).



Mol	Chain	Residues	Atoms				ZeroOcc	AltConf
			Total	C	N	O		
2	A	1	12	9	1	2	0	0
2	B	1	12	9	1	2	0	0
2	C	1	12	9	1	2	0	0
2	D	1	12	9	1	2	0	0

- Molecule 3 is SODIUM ION (three-letter code: NA) (formula: Na).

Mol	Chain	Residues	Atoms		ZeroOcc	AltConf
3	A	1	Total 1	Na 1	0	0
3	C	1	Total 1	Na 1	0	0



4 Data and refinement statistics

Property	Value	Source
Space group	P 1	Depositor
Cell constants a, b, c, α , β , γ	57.52Å 111.93Å 141.04Å 74.47° 80.83° 77.13°	Depositor
Resolution (Å)	50.00 – 2.89 47.57 – 2.89	Depositor EDS
% Data completeness (in resolution range)	98.1 (50.00-2.89) 98.1 (47.57-2.89)	Depositor EDS
R_{merge}	0.08	Depositor
R_{sym}	(Not available)	Depositor
$\langle I/\sigma(I) \rangle$ ¹	1.48 (at 2.91Å)	Xtrriage
Refinement program	REFMAC refmac_5.5.0110	Depositor
R, R_{free}	0.244 , 0.293 0.239 , 0.290	Depositor DCC
R_{free} test set	3649 reflections (5.04%)	wwPDB-VP
Wilson B-factor (Å ²)	73.3	Xtrriage
Anisotropy	0.328	Xtrriage
Bulk solvent k_{sol} (e/Å ³), B_{sol} (Å ²)	0.25 , 73.3	EDS
L-test for twinning ²	$\langle L \rangle = 0.48$, $\langle L^2 \rangle = 0.30$	Xtrriage
Estimated twinning fraction	0.029 for h,h-k,h-l	Xtrriage
F_o, F_c correlation	0.93	EDS
Total number of atoms	19700	wwPDB-VP
Average B, all atoms (Å ²)	60.0	wwPDB-VP

Xtrriage's analysis on translational NCS is as follows: *The largest off-origin peak in the Patterson function is 3.99% of the height of the origin peak. No significant pseudotranslation is detected.*

¹Intensities estimated from amplitudes.

²Theoretical values of $\langle |L| \rangle$, $\langle L^2 \rangle$ for acentric reflections are 0.5, 0.333 respectively for untwinned datasets, and 0.375, 0.2 for perfectly twinned datasets.

5 Model quality [i](#)

5.1 Standard geometry [i](#)

Bond lengths and bond angles in the following residue types are not validated in this section: TYE, NA

The Z score for a bond length (or angle) is the number of standard deviations the observed value is removed from the expected value. A bond length (or angle) with $|Z| > 5$ is considered an outlier worth inspection. RMSZ is the root-mean-square of all Z scores of the bond lengths (or angles).

Mol	Chain	Bond lengths		Bond angles	
		RMSZ	# Z >5	RMSZ	# Z >5
1	A	0.50	0/5153	0.63	0/6976
1	B	0.43	0/4456	0.59	0/6051
1	C	0.39	0/5194	0.53	0/7033
1	D	0.36	0/5182	0.51	0/7022
All	All	0.42	0/19985	0.57	0/27082

Chiral center outliers are detected by calculating the chiral volume of a chiral center and verifying if the center is modelled as a planar moiety or with the opposite hand. A planarity outlier is detected by checking planarity of atoms in a peptide group, atoms in a mainchain group or atoms of a sidechain that are expected to be planar.

Mol	Chain	#Chirality outliers	#Planarity outliers
1	D	0	1

There are no bond length outliers.

There are no bond angle outliers.

There are no chirality outliers.

All (1) planarity outliers are listed below:

Mol	Chain	Res	Type	Group
1	D	635	ALA	Peptide

5.2 Too-close contacts [i](#)

In the following table, the Non-H and H(model) columns list the number of non-hydrogen atoms and hydrogen atoms in the chain respectively. The H(added) column lists the number of hydrogen atoms added and optimized by MolProbity. The Clashes column lists the number of clashes within the asymmetric unit, whereas Symm-Clashes lists symmetry-related clashes.

Mol	Chain	Non-H	H(model)	H(added)	Clashes	Symm-Clashes
1	A	5067	0	5063	105	0
1	B	4381	0	4268	124	0
1	C	5106	0	5119	142	0
1	D	5096	0	5076	136	0
2	A	12	0	12	0	0
2	B	12	0	12	0	0
2	C	12	0	12	1	0
2	D	12	0	12	0	0
3	A	1	0	0	0	0
3	C	1	0	0	0	0
All	All	19700	0	19574	499	0

The all-atom clashscore is defined as the number of clashes found per 1000 atoms (including hydrogen atoms). The all-atom clashscore for this structure is 13.

The worst 5 of 499 close contacts within the same asymmetric unit are listed below, sorted by their clash magnitude.

Atom-1	Atom-2	Interatomic distance (Å)	Clash overlap (Å)
1:B:417:TRP:O	1:B:420:VAL:HG22	1.47	1.11
1:D:159:ALA:HB3	1:D:476:ALA:HB1	1.11	1.10
1:C:45:MET:HE2	1:C:99:VAL:CG1	1.80	1.10
1:C:45:MET:HE2	1:C:99:VAL:HG11	1.10	1.08
1:C:45:MET:CE	1:C:99:VAL:HG11	1.87	1.05

There are no symmetry-related clashes.

5.3 Torsion angles [i](#)

5.3.1 Protein backbone [i](#)

In the following table, the Percentiles column shows the percent Ramachandran outliers of the chain as a percentile score with respect to all X-ray entries followed by that with respect to entries of similar resolution.

The Analysed column shows the number of residues for which the backbone conformation was analysed, and the total number of residues.

Mol	Chain	Analysed	Favoured	Allowed	Outliers	Percentiles
1	A	649/690 (94%)	607 (94%)	37 (6%)	5 (1%)	19 51
1	B	573/690 (83%)	529 (92%)	40 (7%)	4 (1%)	22 54

Continued on next page...

Continued from previous page...

Mol	Chain	Analysed	Favoured	Allowed	Outliers	Percentiles	
1	C	656/690 (95%)	622 (95%)	31 (5%)	3 (0%)	29	61
1	D	659/690 (96%)	624 (95%)	30 (5%)	5 (1%)	19	51
All	All	2537/2760 (92%)	2382 (94%)	138 (5%)	17 (1%)	22	54

5 of 17 Ramachandran outliers are listed below:

Mol	Chain	Res	Type
1	A	311	ASP
1	A	525	ILE
1	D	31	PRO
1	D	425	ILE
1	A	262	ASP

5.3.2 Protein sidechains [i](#)

In the following table, the Percentiles column shows the percent sidechain outliers of the chain as a percentile score with respect to all X-ray entries followed by that with respect to entries of similar resolution.

The Analysed column shows the number of residues for which the sidechain conformation was analysed, and the total number of residues.

Mol	Chain	Analysed	Rotameric	Outliers	Percentiles	
1	A	540/567 (95%)	512 (95%)	28 (5%)	23	55
1	B	453/567 (80%)	429 (95%)	24 (5%)	22	54
1	C	544/567 (96%)	521 (96%)	23 (4%)	30	63
1	D	539/567 (95%)	520 (96%)	19 (4%)	36	70
All	All	2076/2268 (92%)	1982 (96%)	94 (4%)	27	61

5 of 94 residues with a non-rotameric sidechain are listed below:

Mol	Chain	Res	Type
1	C	157	THR
1	C	604	HIS
1	C	222	LYS
1	C	451	SER
1	D	18	ILE

Sometimes sidechains can be flipped to improve hydrogen bonding and reduce clashes. All (1) such sidechains are listed below:

Mol	Chain	Res	Type
1	D	79	ASN

5.3.3 RNA [i](#)

There are no RNA molecules in this entry.

5.4 Non-standard residues in protein, DNA, RNA chains [i](#)

There are no non-standard protein/DNA/RNA residues in this entry.

5.5 Carbohydrates [i](#)

There are no monosaccharides in this entry.

5.6 Ligand geometry [i](#)

Of 6 ligands modelled in this entry, 2 are monoatomic - leaving 4 for Mogul analysis.

In the following table, the Counts columns list the number of bonds (or angles) for which Mogul statistics could be retrieved, the number of bonds (or angles) that are observed in the model and the number of bonds (or angles) that are defined in the Chemical Component Dictionary. The Link column lists molecule types, if any, to which the group is linked. The Z score for a bond length (or angle) is the number of standard deviations the observed value is removed from the expected value. A bond length (or angle) with $|Z| > 2$ is considered an outlier worth inspection. RMSZ is the root-mean-square of all Z scores of the bond lengths (or angles).

Mol	Type	Chain	Res	Link	Bond lengths			Bond angles		
					Counts	RMSZ	# $ Z > 2$	Counts	RMSZ	# $ Z > 2$
2	TYE	C	701	-	12,12,12	0.99	1 (8%)	13,15,15	0.63	0
2	TYE	A	701	-	12,12,12	0.75	0	13,15,15	1.03	1 (7%)
2	TYE	B	701	-	12,12,12	0.87	0	13,15,15	0.53	0
2	TYE	D	701	-	12,12,12	0.99	1 (8%)	13,15,15	0.61	0

In the following table, the Chirals column lists the number of chiral outliers, the number of chiral centers analysed, the number of these observed in the model and the number defined in the Chemical Component Dictionary. Similar counts are reported in the Torsion and Rings columns. '-' means no outliers of that kind were identified.

Mol	Type	Chain	Res	Link	Chirals	Torsions	Rings
2	TYE	C	701	-	-	3/6/6/6	0/1/1/1

Continued on next page...

Continued from previous page...

Mol	Type	Chain	Res	Link	Chirals	Torsions	Rings
2	TYE	A	701	-	-	0/6/6/6	0/1/1/1
2	TYE	B	701	-	-	2/6/6/6	0/1/1/1
2	TYE	D	701	-	-	4/6/6/6	0/1/1/1

All (2) bond length outliers are listed below:

Mol	Chain	Res	Type	Atoms	Z	Observed(Å)	Ideal(Å)
2	C	701	TYE	C-CA	3.10	1.57	1.52
2	D	701	TYE	C-CA	2.91	1.57	1.52

All (1) bond angle outliers are listed below:

Mol	Chain	Res	Type	Atoms	Z	Observed(°)	Ideal(°)
2	A	701	TYE	CB-CA-C	-2.20	108.22	112.21

There are no chirality outliers.

5 of 9 torsion outliers are listed below:

Mol	Chain	Res	Type	Atoms
2	C	701	TYE	N-CA-CB-CG
2	D	701	TYE	N-CA-CB-CG
2	C	701	TYE	C-CA-CB-CG
2	D	701	TYE	C-CA-CB-CG
2	B	701	TYE	O-C-CA-CB

There are no ring outliers.

1 monomer is involved in 1 short contact:

Mol	Chain	Res	Type	Clashes	Symm-Clashes
2	C	701	TYE	1	0

5.7 Other polymers [i](#)

There are no such residues in this entry.

5.8 Polymer linkage issues [i](#)

There are no chain breaks in this entry.

6 Fit of model and data [i](#)

6.1 Protein, DNA and RNA chains [i](#)

In the following table, the column labelled ‘#RSRZ > 2’ contains the number (and percentage) of RSRZ outliers, followed by percent RSRZ outliers for the chain as percentile scores relative to all X-ray entries and entries of similar resolution. The OWAB column contains the minimum, median, 95th percentile and maximum values of the occupancy-weighted average B-factor per residue. The column labelled ‘Q < 0.9’ lists the number of (and percentage) of residues with an average occupancy less than 0.9.

Mol	Chain	Analysed	<RSRZ>	#RSRZ>2	OWAB(Å ²)	Q<0.9
1	A	657/690 (95%)	0.08	14 (2%) 63 61	60, 60, 60, 60	0
1	B	581/690 (84%)	0.50	43 (7%) 14 11	60, 60, 60, 60	0
1	C	663/690 (96%)	0.49	67 (10%) 7 5	60, 60, 60, 60	0
1	D	665/690 (96%)	0.51	62 (9%) 8 6	60, 60, 60, 60	0
All	All	2566/2760 (92%)	0.39	186 (7%) 15 11	60, 60, 60, 60	0

The worst 5 of 186 RSRZ outliers are listed below:

Mol	Chain	Res	Type	RSRZ
1	D	661	ASN	10.7
1	D	43	GLY	7.5
1	D	635	ALA	7.4
1	C	260	ILE	7.2
1	C	267	VAL	7.2

6.2 Non-standard residues in protein, DNA, RNA chains [i](#)

There are no non-standard protein/DNA/RNA residues in this entry.

6.3 Carbohydrates [i](#)

There are no monosaccharides in this entry.

6.4 Ligands [i](#)

In the following table, the Atoms column lists the number of modelled atoms in the group and the number defined in the chemical component dictionary. The B-factors column lists the minimum, median, 95th percentile and maximum values of B factors of atoms in the group. The column labelled ‘Q < 0.9’ lists the number of atoms with occupancy less than 0.9.

Mol	Type	Chain	Res	Atoms	RSCC	RSR	B-factors(\AA^2)	Q<0.9
2	TYE	C	701	12/12	0.77	0.34	60,60,60,60	0
2	TYE	D	701	12/12	0.82	0.32	60,60,60,60	0
3	NA	C	711	1/1	0.83	0.42	119,119,119,119	0
3	NA	A	711	1/1	0.87	0.38	68,68,68,68	0
2	TYE	B	701	12/12	0.87	0.31	60,60,60,60	0
2	TYE	A	701	12/12	0.88	0.24	60,60,60,60	0

6.5 Other polymers [i](#)

There are no such residues in this entry.