



Full wwPDB X-ray Structure Validation Report ⓘ

Oct 4, 2023 – 03:01 PM EDT

PDB ID : 6P0X
Title : Structure of the N-terminal domain of effector protein SpvB from *Salmonella typhimurium* strain LT2
Authors : Xu, C.; Boniecki, M.; Cygler, M.
Deposited on : 2019-05-17
Resolution : 2.40 Å (reported)

This is a Full wwPDB X-ray Structure Validation Report for a publicly released PDB entry.

We welcome your comments at validation@mail.wwpdb.org

A user guide is available at

<https://www.wwpdb.org/validation/2017/XrayValidationReportHelp>

with specific help available everywhere you see the ⓘ symbol.

The types of validation reports are described at

<http://www.wwpdb.org/validation/2017/FAQs#types>.

The following versions of software and data (see [references ⓘ](#)) were used in the production of this report:

MolProbity : 4.02b-467
Mogul : 1.8.5 (274361), CSD as541be (2020)
Xtriage (Phenix) : 1.13
EDS : 2.35.1
Percentile statistics : 20191225.v01 (using entries in the PDB archive December 25th 2019)
Refmac : 5.8.0158
CCP4 : 7.0.044 (Gargrove)
Ideal geometry (proteins) : Engh & Huber (2001)
Ideal geometry (DNA, RNA) : Parkinson et al. (1996)
Validation Pipeline (wwPDB-VP) : 2.35.1

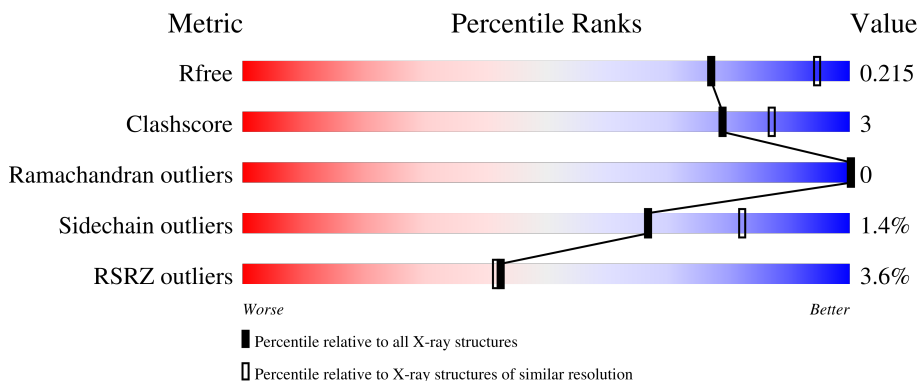
1 Overall quality at a glance

The following experimental techniques were used to determine the structure:

X-RAY DIFFRACTION

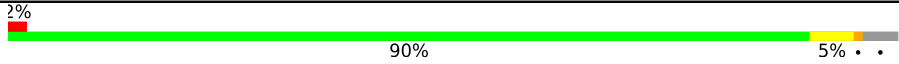
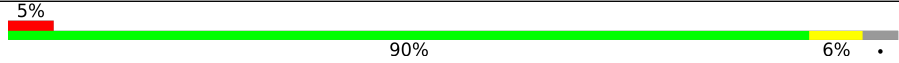
The reported resolution of this entry is 2.40 Å.

Percentile scores (ranging between 0-100) for global validation metrics of the entry are shown in the following graphic. The table shows the number of entries on which the scores are based.



Metric	Whole archive (#Entries)	Similar resolution (#Entries, resolution range(Å))
R_{free}	130704	3907 (2.40-2.40)
Clashscore	141614	4398 (2.40-2.40)
Ramachandran outliers	138981	4318 (2.40-2.40)
Sidechain outliers	138945	4319 (2.40-2.40)
RSRZ outliers	127900	3811 (2.40-2.40)

The table below summarises the geometric issues observed across the polymeric chains and their fit to the electron density. The red, orange, yellow and green segments of the lower bar indicate the fraction of residues that contain outliers for ≥ 3 , 2, 1 and 0 types of geometric quality criteria respectively. A grey segment represents the fraction of residues that are not modelled. The numeric value for each fraction is indicated below the corresponding segment, with a dot representing fractions $\leq 5\%$. The upper red bar (where present) indicates the fraction of residues that have poor fit to the electron density. The numeric value is given above the bar.

Mol	Chain	Length	Quality of chain
1	A	333	 2% 90% 5% . .
1	B	333	 5% 90% 6% .

The following table lists non-polymeric compounds, carbohydrate monomers and non-standard residues in protein, DNA, RNA chains that are outliers for geometric or electron-density-fit criteria:

Mol	Type	Chain	Res	Chirality	Geometry	Clashes	Electron density
2	AKR	A	403	-	X	-	-

2 Entry composition [i](#)

There are 5 unique types of molecules in this entry. The entry contains 5329 atoms, of which 0 are hydrogens and 0 are deuteriums.

In the tables below, the ZeroOcc column contains the number of atoms modelled with zero occupancy, the AltConf column contains the number of residues with at least one atom in alternate conformation and the Trace column contains the number of residues modelled with at most 2 atoms.

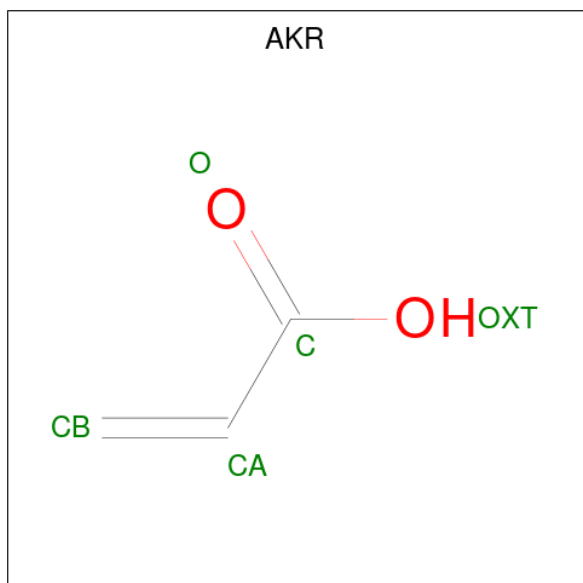
- Molecule 1 is a protein called Salmonella plasmid virulence: SpvB.

Mol	Chain	Residues	Atoms					ZeroOcc	AltConf	Trace
			Total	C	N	O	S			
1	A	320	Total 2498	C 1590	N 421	O 479	S 8	0	2	0
1	B	320	Total 2483	C 1578	N 421	O 477	S 7	0	0	0

There are 6 discrepancies between the modelled and reference sequences:

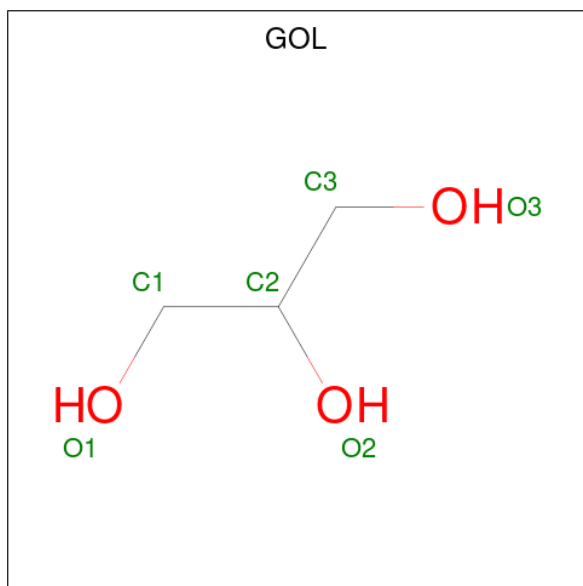
Chain	Residue	Modelled	Actual	Comment	Reference
A	23	SER	-	expression tag	UNP H9L477
A	24	ASN	-	expression tag	UNP H9L477
A	25	ALA	-	expression tag	UNP H9L477
B	23	SER	-	expression tag	UNP H9L477
B	24	ASN	-	expression tag	UNP H9L477
B	25	ALA	-	expression tag	UNP H9L477

- Molecule 2 is ACRYLIC ACID (three-letter code: AKR) (formula: C₃H₄O₂).



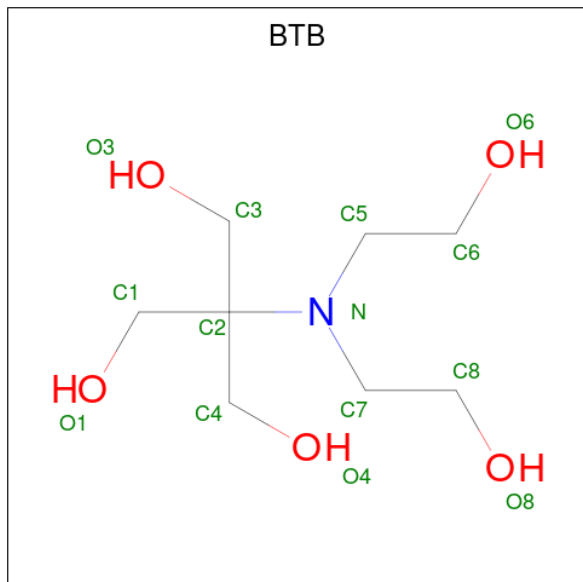
Mol	Chain	Residues	Atoms	ZeroOcc	AltConf
2	A	1	Total C O 5 3 2	0	0
2	A	1	Total C O 5 3 2	0	0
2	A	1	Total C O 5 3 2	0	0

- Molecule 3 is GLYCEROL (three-letter code: GOL) (formula: C₃H₈O₃).



Mol	Chain	Residues	Atoms	ZeroOcc	AltConf
3	A	1	Total C O 6 3 3	0	0
3	A	1	Total C O 6 3 3	0	0
3	A	1	Total C O 6 3 3	0	0
3	A	1	Total C O 6 3 3	0	0
3	A	1	Total C O 6 3 3	0	0
3	B	1	Total C O 6 3 3	0	0
3	B	1	Total C O 6 3 3	0	0
3	B	1	Total C O 6 3 3	0	0
3	B	1	Total C O 6 3 3	0	0

- Molecule 4 is 2-[BIS-(2-HYDROXY-ETHYL)-AMINO]-2-HYDROXYMETHYL-PROPAN E-1,3-DIOL (three-letter code: BTB) (formula: C₈H₁₉NO₅).



Mol	Chain	Residues	Atoms				ZeroOcc	AltConf
			Total	C	N	O		
4	B	1	14	8	1	5	0	0

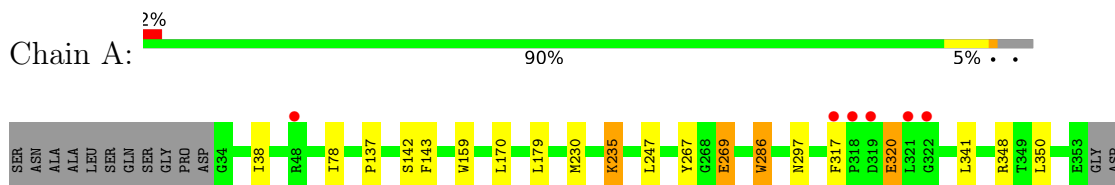
- Molecule 5 is water.

Mol	Chain	Residues	Atoms		ZeroOcc	AltConf
5	A	148	Total	O	0	0
			148	148		
5	B	117	Total	O	0	0
			117	117		

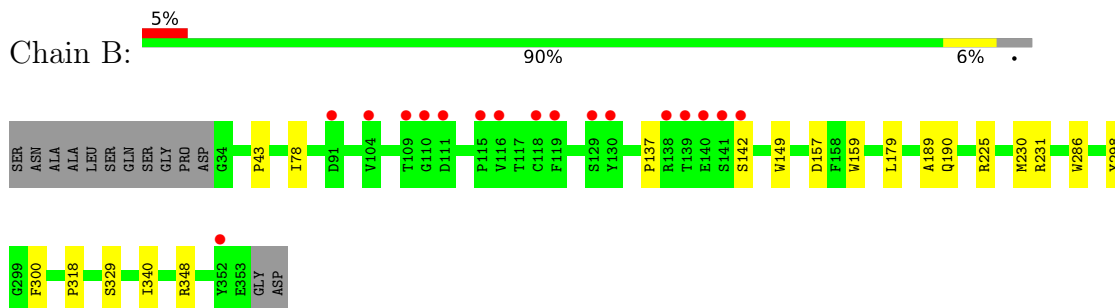
3 Residue-property plots [i](#)

These plots are drawn for all protein, RNA, DNA and oligosaccharide chains in the entry. The first graphic for a chain summarises the proportions of the various outlier classes displayed in the second graphic. The second graphic shows the sequence view annotated by issues in geometry and electron density. Residues are color-coded according to the number of geometric quality criteria for which they contain at least one outlier: green = 0, yellow = 1, orange = 2 and red = 3 or more. A red dot above a residue indicates a poor fit to the electron density ($RSRZ > 2$). Stretches of 2 or more consecutive residues without any outlier are shown as a green connector. Residues present in the sample, but not in the model, are shown in grey.

- Molecule 1: Salmonella plasmid virulence: SpvB



- Molecule 1: Salmonella plasmid virulence: SpvB



4 Data and refinement statistics

Property	Value	Source
Space group	P 43 21 2	Depositor
Cell constants a, b, c, α , β , γ	101.35Å 101.35Å 211.30Å 90.00° 90.00° 90.00°	Depositor
Resolution (Å)	49.28 – 2.40 49.28 – 2.40	Depositor EDS
% Data completeness (in resolution range)	99.5 (49.28-2.40) 99.5 (49.28-2.40)	Depositor EDS
R_{merge}	(Not available)	Depositor
R_{sym}	(Not available)	Depositor
$\langle I/\sigma(I) \rangle$ ¹	4.28 (at 2.39Å)	Xtrriage
Refinement program	PHENIX (1.15.2_3472)	Depositor
R, R_{free}	0.187 , 0.215 0.187 , 0.215	Depositor DCC
R_{free} test set	2077 reflections (4.74%)	wwPDB-VP
Wilson B-factor (Å ²)	34.7	Xtrriage
Anisotropy	0.013	Xtrriage
Bulk solvent k_{sol} (e/Å ³), B_{sol} (Å ²)	0.33 , 39.9	EDS
L-test for twinning ²	$\langle L \rangle = 0.50$, $\langle L^2 \rangle = 0.33$	Xtrriage
Estimated twinning fraction	No twinning to report.	Xtrriage
F_o, F_c correlation	0.95	EDS
Total number of atoms	5329	wwPDB-VP
Average B, all atoms (Å ²)	45.0	wwPDB-VP

Xtrriage's analysis on translational NCS is as follows: *The largest off-origin peak in the Patterson function is 3.04% of the height of the origin peak. No significant pseudotranslation is detected.*

¹Intensities estimated from amplitudes.

²Theoretical values of $\langle |L| \rangle$, $\langle L^2 \rangle$ for acentric reflections are 0.5, 0.333 respectively for untwinned datasets, and 0.375, 0.2 for perfectly twinned datasets.

5 Model quality [i](#)

5.1 Standard geometry [i](#)

Bond lengths and bond angles in the following residue types are not validated in this section: GOL, AKR, BTB, MLY

The Z score for a bond length (or angle) is the number of standard deviations the observed value is removed from the expected value. A bond length (or angle) with $|Z| > 5$ is considered an outlier worth inspection. RMSZ is the root-mean-square of all Z scores of the bond lengths (or angles).

Mol	Chain	Bond lengths		Bond angles	
		RMSZ	# Z >5	RMSZ	# Z >5
1	A	0.27	0/2556	0.49	0/3501
1	B	0.27	0/2534	0.49	0/3471
All	All	0.27	0/5090	0.49	0/6972

Chiral center outliers are detected by calculating the chiral volume of a chiral center and verifying if the center is modelled as a planar moiety or with the opposite hand. A planarity outlier is detected by checking planarity of atoms in a peptide group, atoms in a mainchain group or atoms of a sidechain that are expected to be planar.

Mol	Chain	#Chirality outliers	#Planarity outliers
1	A	0	1

There are no bond length outliers.

There are no bond angle outliers.

There are no chirality outliers.

All (1) planarity outliers are listed below:

Mol	Chain	Res	Type	Group
1	A	235	MLY	Mainchain

5.2 Too-close contacts [i](#)

In the following table, the Non-H and H(model) columns list the number of non-hydrogen atoms and hydrogen atoms in the chain respectively. The H(added) column lists the number of hydrogen atoms added and optimized by MolProbity. The Clashes column lists the number of clashes within the asymmetric unit, whereas Symm-Clashes lists symmetry-related clashes.

Mol	Chain	Non-H	H(model)	H(added)	Clashes	Symm-Clashes
1	A	2498	0	2342	14	0
1	B	2483	0	2321	12	0
2	A	15	0	9	1	0
3	A	30	0	40	2	0
3	B	24	0	32	1	0
4	B	14	0	17	3	0
5	A	148	0	0	2	0
5	B	117	0	0	1	0
All	All	5329	0	4761	27	0

The all-atom clashscore is defined as the number of clashes found per 1000 atoms (including hydrogen atoms). The all-atom clashscore for this structure is 3.

All (27) close contacts within the same asymmetric unit are listed below, sorted by their clash magnitude.

Atom-1	Atom-2	Interatomic distance (Å)	Clash overlap (Å)
2:A:401:AKR:HB3	5:A:501:HOH:O	2.04	0.57
1:A:269:GLU:HG2	3:A:405:GOL:H11	1.89	0.53
1:B:231:ARG:O	3:B:404:GOL:O1	2.28	0.51
1:A:317:PHE:HB3	1:A:320:GLU:CG	2.41	0.51
1:A:137:PRO:HG2	1:A:142:SER:HB3	1.93	0.50
1:A:267:TYR:N	1:A:269:GLU:OE2	2.37	0.49
1:A:317:PHE:HB3	1:A:320:GLU:HG2	1.92	0.49
1:A:38:ILE:HD11	1:B:300:PHE:HA	1.97	0.47
1:A:350:LEU:HD23	1:B:340:ILE:HG23	1.99	0.45
1:B:225:ARG:NH2	5:B:502:HOH:O	2.33	0.45
1:A:170:LEU:HG	1:A:247:LEU:HD13	1.98	0.45
1:A:143:PHE:CE1	3:A:407:GOL:H11	2.52	0.44
1:B:78:ILE:HG21	1:B:159:TRP:CE2	2.53	0.44
1:A:297:ASN:OD1	5:A:501:HOH:O	2.21	0.44
1:A:269:GLU:HG3	1:A:286:TRP:HB3	1.99	0.43
4:B:401:BTB:H51	4:B:401:BTB:H41	1.56	0.43
1:B:179:LEU:HB2	1:B:190:GLN:HB2	1.99	0.43
1:A:179:LEU:HD11	1:A:230:MET:HA	2.01	0.43
1:B:189:ALA:HB1	1:B:298:TYR:CD1	2.54	0.42
1:B:179:LEU:HD21	1:B:230:MET:HA	2.00	0.42
1:A:78:ILE:HG21	1:A:159:TRP:CE2	2.56	0.41
1:B:137:PRO:HG2	1:B:142:SER:HB3	2.03	0.41
1:A:235:MLY:HD3	1:A:235:MLY:HH22	1.90	0.41
1:B:43:PRO:HB2	1:B:329:SER:HB3	2.03	0.40
4:B:401:BTB:H12	4:B:401:BTB:H72	1.25	0.40
1:B:318:PRO:HD2	4:B:401:BTB:H11	2.03	0.40

Continued on next page...

Continued from previous page...

Atom-1	Atom-2	Interatomic distance (Å)	Clash overlap (Å)
1:B:149:TRP:O	1:B:157:ASP:HA	2.22	0.40

There are no symmetry-related clashes.

5.3 Torsion angles [i](#)

5.3.1 Protein backbone [i](#)

In the following table, the Percentiles column shows the percent Ramachandran outliers of the chain as a percentile score with respect to all X-ray entries followed by that with respect to entries of similar resolution.

The Analysed column shows the number of residues for which the backbone conformation was analysed, and the total number of residues.

Mol	Chain	Analysed	Favoured	Allowed	Outliers	Percentiles	
1	A	318/333 (96%)	310 (98%)	8 (2%)	0	100	100
1	B	316/333 (95%)	306 (97%)	10 (3%)	0	100	100
All	All	634/666 (95%)	616 (97%)	18 (3%)	0	100	100

There are no Ramachandran outliers to report.

5.3.2 Protein sidechains [i](#)

In the following table, the Percentiles column shows the percent sidechain outliers of the chain as a percentile score with respect to all X-ray entries followed by that with respect to entries of similar resolution.

The Analysed column shows the number of residues for which the sidechain conformation was analysed, and the total number of residues.

Mol	Chain	Analysed	Rotameric	Outliers	Percentiles	
1	A	259/270 (96%)	254 (98%)	5 (2%)	57	75
1	B	255/270 (94%)	253 (99%)	2 (1%)	81	91
All	All	514/540 (95%)	507 (99%)	7 (1%)	67	82

All (7) residues with a non-rotameric sidechain are listed below:

Mol	Chain	Res	Type
1	A	269	GLU
1	A	286	TRP
1	A	320	GLU
1	A	341	LEU
1	A	348	ARG
1	B	286	TRP
1	B	348	ARG

Sometimes sidechains can be flipped to improve hydrogen bonding and reduce clashes. There are no such sidechains identified.

5.3.3 RNA [i](#)

There are no RNA molecules in this entry.

5.4 Non-standard residues in protein, DNA, RNA chains [i](#)

4 non-standard protein/DNA/RNA residues are modelled in this entry.

In the following table, the Counts columns list the number of bonds (or angles) for which Mogul statistics could be retrieved, the number of bonds (or angles) that are observed in the model and the number of bonds (or angles) that are defined in the Chemical Component Dictionary. The Link column lists molecule types, if any, to which the group is linked. The Z score for a bond length (or angle) is the number of standard deviations the observed value is removed from the expected value. A bond length (or angle) with $|Z| > 2$ is considered an outlier worth inspection. RMSZ is the root-mean-square of all Z scores of the bond lengths (or angles).

Mol	Type	Chain	Res	Link	Bond lengths			Bond angles		
					Counts	RMSZ	# Z > 2	Counts	RMSZ	# Z > 2
1	MLY	B	235	1	9,10,11	0.56	0	6,11,13	0.92	0
1	MLY	B	173	1	9,10,11	0.52	0	6,11,13	0.80	0
1	MLY	A	173	1	9,10,11	0.52	0	6,11,13	0.93	0
1	MLY	A	235	1	9,10,11	0.50	0	6,11,13	0.88	0

In the following table, the Chirals column lists the number of chiral outliers, the number of chiral centers analysed, the number of these observed in the model and the number defined in the Chemical Component Dictionary. Similar counts are reported in the Torsion and Rings columns. '-' means no outliers of that kind were identified.

Mol	Type	Chain	Res	Link	Chirals	Torsions	Rings
1	MLY	B	235	1	-	0/8/9/11	-
1	MLY	B	173	1	-	0/8/9/11	-
1	MLY	A	173	1	-	0/8/9/11	-

Continued on next page...

Continued from previous page...

Mol	Type	Chain	Res	Link	Chirals	Torsions	Rings
1	MLY	A	235	1	-	0/8/9/11	-

There are no bond length outliers.

There are no bond angle outliers.

There are no chirality outliers.

There are no torsion outliers.

There are no ring outliers.

1 monomer is involved in 1 short contact:

Mol	Chain	Res	Type	Clashes	Symm-Clashes
1	A	235	MLY	1	0

5.5 Carbohydrates [i](#)

There are no monosaccharides in this entry.

5.6 Ligand geometry [i](#)

13 ligands are modelled in this entry.

In the following table, the Counts columns list the number of bonds (or angles) for which Mogul statistics could be retrieved, the number of bonds (or angles) that are observed in the model and the number of bonds (or angles) that are defined in the Chemical Component Dictionary. The Link column lists molecule types, if any, to which the group is linked. The Z score for a bond length (or angle) is the number of standard deviations the observed value is removed from the expected value. A bond length (or angle) with $|Z| > 2$ is considered an outlier worth inspection. RMSZ is the root-mean-square of all Z scores of the bond lengths (or angles).

Mol	Type	Chain	Res	Link	Bond lengths			Bond angles		
					Counts	RMSZ	# Z > 2	Counts	RMSZ	# Z > 2
3	GOL	B	405	-	5,5,5	0.99	0	5,5,5	0.97	0
3	GOL	A	408	-	5,5,5	0.90	0	5,5,5	1.01	0
3	GOL	B	404	-	5,5,5	0.91	0	5,5,5	1.06	0
3	GOL	A	406	-	5,5,5	0.93	0	5,5,5	0.94	0
3	GOL	B	403	-	5,5,5	0.85	0	5,5,5	1.02	0
3	GOL	A	405	-	5,5,5	0.86	0	5,5,5	1.07	0
3	GOL	B	402	-	5,5,5	0.86	0	5,5,5	1.01	0
2	AKR	A	403	-	4,4,4	1.59	1 (25%)	4,4,4	1.30	1 (25%)
2	AKR	A	401	-	4,4,4	1.50	1 (25%)	4,4,4	1.59	1 (25%)

Mol	Type	Chain	Res	Link	Bond lengths			Bond angles		
					Counts	RMSZ	# Z > 2	Counts	RMSZ	# Z > 2
4	BTB	B	401	-	13,13,13	1.97	3 (23%)	7,16,16	1.23	1 (14%)
2	AKR	A	402	-	4,4,4	1.59	1 (25%)	4,4,4	1.29	0
3	GOL	A	404	-	5,5,5	0.92	0	5,5,5	0.96	0
3	GOL	A	407	-	5,5,5	0.94	0	5,5,5	0.96	0

In the following table, the Chirals column lists the number of chiral outliers, the number of chiral centers analysed, the number of these observed in the model and the number defined in the Chemical Component Dictionary. Similar counts are reported in the Torsion and Rings columns. '-' means no outliers of that kind were identified.

Mol	Type	Chain	Res	Link	Chirals	Torsions	Rings
3	GOL	B	405	-	-	4/4/4/4	-
3	GOL	A	408	-	-	0/4/4/4	-
3	GOL	B	404	-	-	2/4/4/4	-
3	GOL	A	406	-	-	2/4/4/4	-
3	GOL	B	403	-	-	0/4/4/4	-
3	GOL	A	405	-	-	0/4/4/4	-
3	GOL	B	402	-	-	0/4/4/4	-
2	AKR	A	403	-	-	2/2/2/2	-
2	AKR	A	401	-	-	1/2/2/2	-
4	BTB	B	401	-	-	10/21/21/21	-
2	AKR	A	402	-	-	2/2/2/2	-
3	GOL	A	404	-	-	1/4/4/4	-
3	GOL	A	407	-	-	2/4/4/4	-

All (6) bond length outliers are listed below:

Mol	Chain	Res	Type	Atoms	Z	Observed(Å)	Ideal(Å)
4	B	401	BTB	O8-C8	-4.28	1.20	1.42
4	B	401	BTB	O6-C6	-3.94	1.21	1.42
2	A	403	AKR	CA-C	2.40	1.53	1.46
2	A	402	AKR	CA-C	2.36	1.53	1.46
2	A	401	AKR	CA-C	2.32	1.53	1.46
4	B	401	BTB	C1-C2	2.18	1.56	1.53

All (3) bond angle outliers are listed below:

Mol	Chain	Res	Type	Atoms	Z	Observed(°)	Ideal(°)
2	A	401	AKR	OXT-C-CA	2.48	120.93	114.19
4	B	401	BTB	O8-C8-C7	2.13	120.04	111.19

Continued on next page...

Continued from previous page...

Mol	Chain	Res	Type	Atoms	Z	Observed(°)	Ideal(°)
2	A	403	AKR	OXT-C-CA	2.02	119.68	114.19

There are no chirality outliers.

All (26) torsion outliers are listed below:

Mol	Chain	Res	Type	Atoms
2	A	402	AKR	O-C-CA-CB
2	A	402	AKR	OXT-C-CA-CB
2	A	403	AKR	O-C-CA-CB
2	A	403	AKR	OXT-C-CA-CB
3	A	406	GOL	O1-C1-C2-C3
3	A	407	GOL	O2-C2-C3-O3
3	B	404	GOL	O1-C1-C2-C3
3	B	405	GOL	O1-C1-C2-C3
4	B	401	BTB	O1-C1-C2-C3
4	B	401	BTB	O1-C1-C2-C4
4	B	401	BTB	O1-C1-C2-N
4	B	401	BTB	C1-C2-C3-O3
4	B	401	BTB	C4-C2-C3-O3
4	B	401	BTB	N-C2-C3-O3
3	B	405	GOL	O1-C1-C2-O2
3	A	407	GOL	C1-C2-C3-O3
3	B	405	GOL	C1-C2-C3-O3
3	A	406	GOL	O1-C1-C2-O2
3	B	404	GOL	O1-C1-C2-O2
2	A	401	AKR	OXT-C-CA-CB
3	B	405	GOL	O2-C2-C3-O3
4	B	401	BTB	C1-C2-N-C7
4	B	401	BTB	C3-C2-N-C5
4	B	401	BTB	C4-C2-N-C5
4	B	401	BTB	C4-C2-N-C7
3	A	404	GOL	O1-C1-C2-C3

There are no ring outliers.

5 monomers are involved in 7 short contacts:

Mol	Chain	Res	Type	Clashes	Symm-Clashes
3	B	404	GOL	1	0
3	A	405	GOL	1	0
2	A	401	AKR	1	0
4	B	401	BTB	3	0

Continued on next page...

Continued from previous page...

Mol	Chain	Res	Type	Clashes	Symm-Clashes
3	A	407	GOL	1	0

5.7 Other polymers [i](#)

There are no such residues in this entry.

5.8 Polymer linkage issues [i](#)

There are no chain breaks in this entry.

6 Fit of model and data

6.1 Protein, DNA and RNA chains

In the following table, the column labelled ‘#RSRZ > 2’ contains the number (and percentage) of RSRZ outliers, followed by percent RSRZ outliers for the chain as percentile scores relative to all X-ray entries and entries of similar resolution. The OWAB column contains the minimum, median, 95th percentile and maximum values of the occupancy-weighted average B-factor per residue. The column labelled ‘Q < 0.9’ lists the number of (and percentage) of residues with an average occupancy less than 0.9.

Mol	Chain	Analysed	<RSRZ>	#RSRZ>2	OWAB(Å ²)	Q<0.9
1	A	318/333 (95%)	-0.27	6 (1%) 66 64	22, 36, 76, 105	0
1	B	318/333 (95%)	-0.02	17 (5%) 26 25	24, 46, 91, 120	0
All	All	636/666 (95%)	-0.15	23 (3%) 42 42	22, 42, 86, 120	0

All (23) RSRZ outliers are listed below:

Mol	Chain	Res	Type	RSRZ
1	B	141	SER	4.6
1	A	48	ARG	3.8
1	A	321	LEU	3.5
1	B	140	GLU	3.2
1	A	318	PRO	3.1
1	B	138	ARG	3.1
1	B	142	SER	3.1
1	B	139	THR	3.0
1	A	317	PHE	2.8
1	A	322	GLY	2.7
1	B	130	TYR	2.7
1	B	91	ASP	2.7
1	B	110	GLY	2.7
1	B	118	CYS	2.6
1	B	352	TYR	2.4
1	B	119	PHE	2.3
1	B	111	ASP	2.2
1	B	129	SER	2.2
1	B	109	THR	2.1
1	B	104	VAL	2.1
1	A	319	ASP	2.1
1	B	116	VAL	2.0
1	B	115	PRO	2.0

6.2 Non-standard residues in protein, DNA, RNA chains [i](#)

In the following table, the Atoms column lists the number of modelled atoms in the group and the number defined in the chemical component dictionary. The B-factors column lists the minimum, median, 95th percentile and maximum values of B factors of atoms in the group. The column labelled 'Q< 0.9' lists the number of atoms with occupancy less than 0.9.

Mol	Type	Chain	Res	Atoms	RSCC	RSR	B-factors(Å ²)	Q<0.9
1	MLY	B	173	11/12	0.97	0.16	43,48,57,58	0
1	MLY	B	235	11/12	0.97	0.13	31,33,45,47	0
1	MLY	A	173	11/12	0.98	0.13	25,32,34,44	0
1	MLY	A	235	11/12	0.98	0.13	27,37,48,49	0

6.3 Carbohydrates [i](#)

There are no monosaccharides in this entry.

6.4 Ligands [i](#)

In the following table, the Atoms column lists the number of modelled atoms in the group and the number defined in the chemical component dictionary. The B-factors column lists the minimum, median, 95th percentile and maximum values of B factors of atoms in the group. The column labelled 'Q< 0.9' lists the number of atoms with occupancy less than 0.9.

Mol	Type	Chain	Res	Atoms	RSCC	RSR	B-factors(Å ²)	Q<0.9
3	GOL	A	407	6/6	0.74	0.21	65,70,71,75	0
3	GOL	B	402	6/6	0.80	0.22	61,63,65,66	0
3	GOL	A	405	6/6	0.85	0.22	62,63,64,65	0
3	GOL	B	405	6/6	0.85	0.26	67,68,69,71	0
3	GOL	A	408	6/6	0.86	0.21	65,68,73,74	0
3	GOL	B	404	6/6	0.87	0.20	55,60,66,67	0
2	AKR	A	402	5/5	0.88	0.17	34,40,57,59	0
4	BTB	B	401	14/14	0.88	0.19	38,44,49,51	0
3	GOL	A	404	6/6	0.89	0.24	50,61,66,75	0
3	GOL	B	403	6/6	0.90	0.17	40,51,59,59	0
3	GOL	A	406	6/6	0.92	0.24	40,51,54,58	0
2	AKR	A	403	5/5	0.92	0.20	59,62,64,64	0
2	AKR	A	401	5/5	0.93	0.20	21,25,38,38	0

6.5 Other polymers [i](#)

There are no such residues in this entry.