



Full wwPDB EM Validation Report ⓘ

Sep 30, 2023 – 07:26 am BST

PDB ID : 8P3T
EMDB ID : EMD-17394
Title : Homomeric GluA1 in tandem with TARP gamma-3, desensitized conformation 1
Authors : Zhang, D.; Krieger, J.; Yamashita, K.; Greger, I.
Deposited on : 2023-05-18
Resolution : 3.39 Å(reported)

This is a Full wwPDB EM Validation Report for a publicly released PDB entry.

We welcome your comments at validation@mail.wwpdb.org

A user guide is available at

<https://www.wwpdb.org/validation/2017/EMValidationReportHelp>

with specific help available everywhere you see the ⓘ symbol.

The types of validation reports are described at

<http://www.wwpdb.org/validation/2017/FAQs#types>.

The following versions of software and data (see [references ⓘ](#)) were used in the production of this report:

EMDB validation analysis : 0.0.1.dev50
MolProbity : 4.02b-467
Percentile statistics : 20191225.v01 (using entries in the PDB archive December 25th 2019)
MapQ : 1.9.9
Ideal geometry (proteins) : Engh & Huber (2001)
Ideal geometry (DNA, RNA) : Parkinson et al. (1996)
Validation Pipeline (wwPDB-VP) : 2.35.1

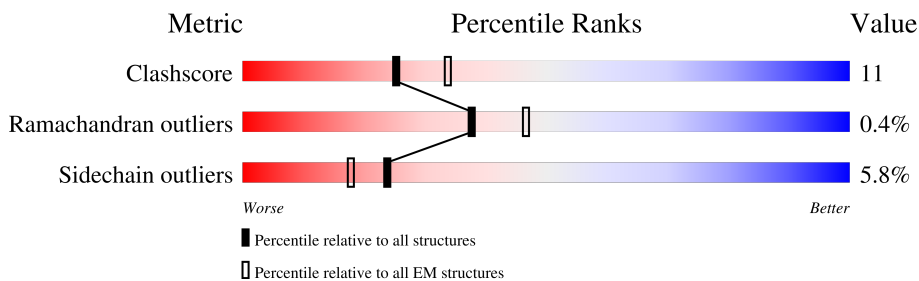
1 Overall quality at a glance

The following experimental techniques were used to determine the structure:

ELECTRON MICROSCOPY

The reported resolution of this entry is 3.39 Å.

Percentile scores (ranging between 0-100) for global validation metrics of the entry are shown in the following graphic. The table shows the number of entries on which the scores are based.



Metric	Whole archive (#Entries)	EM structures (#Entries)
Clashscore	158937	4297
Ramachandran outliers	154571	4023
Sidechain outliers	154315	3826

The table below summarises the geometric issues observed across the polymeric chains and their fit to the map. The red, orange, yellow and green segments of the bar indicate the fraction of residues that contain outliers for ≥ 3 , 2, 1 and 0 types of geometric quality criteria respectively. A grey segment represents the fraction of residues that are not modelled. The numeric value for each fraction is indicated below the corresponding segment, with a dot representing fractions $\leq 5\%$. The upper red bar (where present) indicates the fraction of residues that have poor fit to the EM map (all-atom inclusion $< 40\%$). The numeric value is given above the bar.

Mol	Chain	Length	Quality of chain
1	A	915	
1	B	915	
1	C	915	
1	D	915	
2	E	314	
2	F	314	
2	G	314	
2	H	314	

2 Entry composition [i](#)

There are 2 unique types of molecules in this entry. The entry contains 16861 atoms, of which 0 are hydrogens and 0 are deuteriums.

In the tables below, the AltConf column contains the number of residues with at least one atom in alternate conformation and the Trace column contains the number of residues modelled with at most 2 atoms.

- Molecule 1 is a protein called Glutamate receptor 1 flip isoform.

Mol	Chain	Residues	Atoms					AltConf	Trace
			Total	C	N	O	S		
1	A	386	2843	1866	455	506	16	0	0
1	B	384	2909	1909	466	518	16	3	0
1	C	384	2840	1860	456	508	16	0	0
1	D	379	2847	1869	456	506	16	3	0

There are 32 discrepancies between the modelled and reference sequences:

Chain	Residue	Modelled	Actual	Comment	Reference
A	-6	ASP	-	insertion	UNP P19490
A	-5	TYR	-	insertion	UNP P19490
A	-4	LYS	-	insertion	UNP P19490
A	-3	ASP	-	insertion	UNP P19490
A	-2	ASP	-	insertion	UNP P19490
A	-1	ASP	-	insertion	UNP P19490
A	0	ASP	-	insertion	UNP P19490
A	1	LYS	-	insertion	UNP P19490
B	-6	ASP	-	insertion	UNP P19490
B	-5	TYR	-	insertion	UNP P19490
B	-4	LYS	-	insertion	UNP P19490
B	-3	ASP	-	insertion	UNP P19490
B	-2	ASP	-	insertion	UNP P19490
B	-1	ASP	-	insertion	UNP P19490
B	0	ASP	-	insertion	UNP P19490
B	1	LYS	-	insertion	UNP P19490
C	-6	ASP	-	insertion	UNP P19490
C	-5	TYR	-	insertion	UNP P19490
C	-4	LYS	-	insertion	UNP P19490
C	-3	ASP	-	insertion	UNP P19490
C	-2	ASP	-	insertion	UNP P19490
C	-1	ASP	-	insertion	UNP P19490

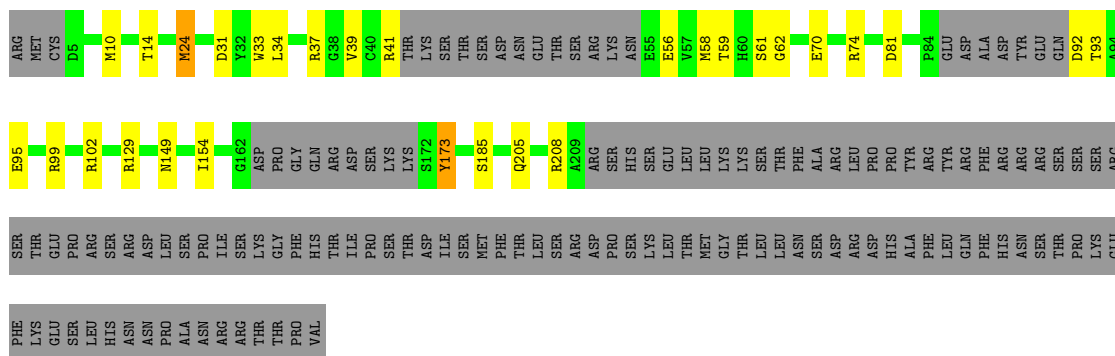
Continued on next page...

Continued from previous page...

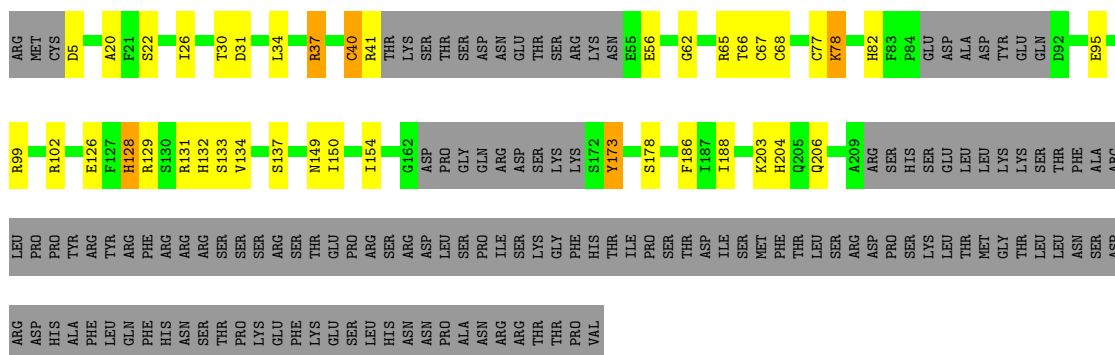
Chain	Residue	Modelled	Actual	Comment	Reference
C	0	ASP	-	insertion	UNP P19490
C	1	LYS	-	insertion	UNP P19490
D	-6	ASP	-	insertion	UNP P19490
D	-5	TYR	-	insertion	UNP P19490
D	-4	LYS	-	insertion	UNP P19490
D	-3	ASP	-	insertion	UNP P19490
D	-2	ASP	-	insertion	UNP P19490
D	-1	ASP	-	insertion	UNP P19490
D	0	ASP	-	insertion	UNP P19490
D	1	LYS	-	insertion	UNP P19490

- Molecule 2 is a protein called Voltage-dependent calcium channel gamma-3 subunit.

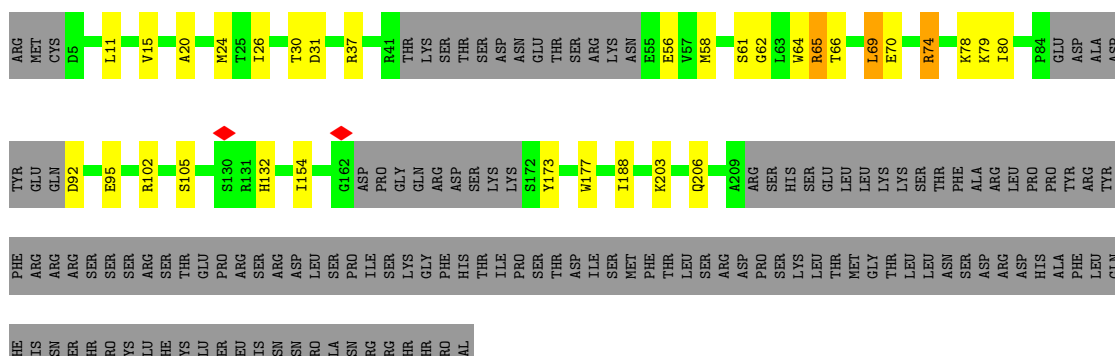
Mol	Chain	Residues	Atoms					AltConf	Trace
			Total	C	N	O	S		
2	E	176	1357	889	226	234	8	0	0
2	F	176	1357	889	226	234	8	0	0
2	G	176	1351	883	226	234	8	0	0
2	H	176	1357	889	226	234	8	0	0



• Molecule 2: Voltage-dependent calcium channel gamma-3 subunit



• Molecule 2: Voltage-dependent calcium channel gamma-3 subunit



4 Experimental information

Property	Value	Source
EM reconstruction method	SINGLE PARTICLE	Depositor
Imposed symmetry	POINT, Not provided	
Number of particles used	72104	Depositor
Resolution determination method	FSC 0.143 CUT-OFF	Depositor
CTF correction method	PHASE FLIPPING AND AMPLITUDE CORRECTION	Depositor
Microscope	TFS KRIOS	Depositor
Voltage (kV)	300	Depositor
Electron dose ($e^-/\text{\AA}^2$)	50	Depositor
Minimum defocus (nm)	1400	Depositor
Maximum defocus (nm)	2400	Depositor
Magnification	Not provided	
Image detector	GATAN K3 BIOQUANTUM (6k x 4k)	Depositor
Maximum map value	1.394	Depositor
Minimum map value	-0.610	Depositor
Average map value	0.001	Depositor
Map value standard deviation	0.043	Depositor
Recommended contour level	0.25	Depositor
Map size (Å)	339.2, 339.2, 339.2	wwPDB
Map dimensions	256, 256, 256	wwPDB
Map angles (°)	90.0, 90.0, 90.0	wwPDB
Pixel spacing (Å)	1.325, 1.325, 1.325	Depositor

5 Model quality [i](#)

5.1 Standard geometry [i](#)

The Z score for a bond length (or angle) is the number of standard deviations the observed value is removed from the expected value. A bond length (or angle) with $|Z| > 5$ is considered an outlier worth inspection. RMSZ is the root-mean-square of all Z scores of the bond lengths (or angles).

Mol	Chain	Bond lengths		Bond angles	
		RMSZ	# Z >5	RMSZ	# Z >5
1	A	0.62	0/2907	0.78	4/3954 (0.1%)
1	B	0.60	0/2975	0.66	0/4036
1	C	0.61	0/2904	0.71	2/3951 (0.1%)
1	D	0.62	0/2911	0.69	1/3953 (0.0%)
2	E	0.55	0/1389	0.54	0/1879
2	F	0.55	0/1389	0.51	0/1879
2	G	0.56	0/1382	0.56	0/1870
2	H	0.55	0/1389	0.51	0/1879
All	All	0.59	0/17246	0.66	7/23401 (0.0%)

Chiral center outliers are detected by calculating the chiral volume of a chiral center and verifying if the center is modelled as a planar moiety or with the opposite hand. A planarity outlier is detected by checking planarity of atoms in a peptide group, atoms in a mainchain group or atoms of a sidechain that are expected to be planar.

Mol	Chain	#Chirality outliers	#Planarity outliers
1	A	0	5
1	B	0	1
1	D	0	1
All	All	0	7

There are no bond length outliers.

All (7) bond angle outliers are listed below:

Mol	Chain	Res	Type	Atoms	Z	Observed(°)	Ideal(°)
1	A	637	LYS	CB-CA-C	-11.79	86.83	110.40
1	C	630	GLU	CB-CA-C	-8.12	94.16	110.40
1	A	641	ILE	N-CA-C	-6.26	94.11	111.00
1	A	639	THR	CB-CA-C	-6.01	95.36	111.60
1	A	637	LYS	CA-CB-CG	5.38	125.24	113.40
1	D	498	ILE	CB-CA-C	-5.32	100.96	111.60
1	C	501	LYS	N-CA-C	-5.25	96.83	111.00

There are no chirality outliers.

All (7) planarity outliers are listed below:

Mol	Chain	Res	Type	Group
1	A	624	ARG	Sidechain
1	A	630	GLU	Mainchain
1	A	657	ARG	Sidechain
1	A	690	ARG	Sidechain
1	A	711	ARG	Sidechain
1	B	481	ARG	Sidechain
1	D	541	ARG	Sidechain

5.2 Too-close contacts [i](#)

In the following table, the Non-H and H(model) columns list the number of non-hydrogen atoms and hydrogen atoms in the chain respectively. The H(added) column lists the number of hydrogen atoms added and optimized by MolProbity. The Clashes column lists the number of clashes within the asymmetric unit, whereas Symm-Clashes lists symmetry-related clashes.

Mol	Chain	Non-H	H(model)	H(added)	Clashes	Symm-Clashes
1	A	2843	0	2725	107	0
1	B	2909	0	2830	64	0
1	C	2840	0	2716	60	0
1	D	2847	0	2755	89	0
2	E	1357	0	1340	21	0
2	F	1357	0	1340	15	0
2	G	1351	0	1333	27	0
2	H	1357	0	1340	17	0
All	All	16861	0	16379	381	0

The all-atom clashscore is defined as the number of clashes found per 1000 atoms (including hydrogen atoms). The all-atom clashscore for this structure is 11.

All (381) close contacts within the same asymmetric unit are listed below, sorted by their clash magnitude.

Atom-1	Atom-2	Interatomic distance (Å)	Clash overlap (Å)
1:B:500:ILE:HD11	1:B:694:GLY:HA2	1.27	1.14
1:D:501:LYS:CB	1:D:690:ARG:HA	1.83	1.07
1:D:632:ALA:HB2	1:D:719:VAL:C	1.74	1.07
1:A:633:GLU:HA	1:A:636:ALA:HA	1.32	1.06
1:A:633:GLU:CA	1:A:636:ALA:HA	1.85	1.06
1:C:637:LYS:HA	1:C:637:LYS:HZ3	1.20	1.05

Continued on next page...

Continued from previous page...

Atom-1	Atom-2	Interatomic distance (Å)	Clash overlap (Å)
1:C:499:MET:HE1	1:C:689:VAL:HG11	1.41	1.00
1:A:624:ARG:NH1	1:D:619[B]:PHE:CD1	2.30	1.00
1:C:637:LYS:HA	1:C:637:LYS:NZ	1.75	1.00
1:D:500:ILE:HD11	1:D:502:LYS:HA	1.47	0.95
1:A:638:GLN:OE1	1:A:639:THR:HB	1.72	0.89
1:D:641:ILE:HG23	1:D:695:LYS:C	1.92	0.89
1:A:638:GLN:HG3	1:A:639:THR:N	1.86	0.88
1:C:499:MET:CE	1:C:689:VAL:HG11	2.03	0.86
1:A:636:ALA:HB3	1:A:637:LYS:HD3	1.59	0.84
1:A:637:LYS:CG	1:A:638:GLN:N	2.41	0.83
1:A:636:ALA:CB	1:A:637:LYS:HD3	2.10	0.82
1:A:637:LYS:HG2	1:A:638:GLN:N	1.95	0.80
1:A:637:LYS:C	1:A:639:THR:H	1.85	0.80
1:C:502:LYS:H	1:C:716:THR:HA	1.46	0.80
1:A:637:LYS:HD2	1:A:643:TYR:CE2	2.17	0.79
1:A:639:THR:O	1:A:641:ILE:HG22	1.83	0.79
1:A:637:LYS:HD2	1:A:643:TYR:HE2	1.48	0.78
1:C:499:MET:SD	1:C:689:VAL:HG21	2.24	0.78
1:C:499:MET:C	1:C:499:MET:HE2	2.04	0.77
1:D:428:ILE:HD11	1:D:742:VAL:HG23	1.67	0.77
1:D:499:MET:SD	1:D:689:VAL:HG21	2.25	0.76
1:D:498:ILE:HD13	1:D:719:VAL:HG23	1.67	0.76
1:D:498:ILE:CD1	1:D:719:VAL:HG23	2.17	0.75
1:A:638:GLN:CG	1:A:639:THR:N	2.48	0.74
1:A:395:THR:HG21	1:A:402:VAL:HG21	1.68	0.74
1:C:500:ILE:HG22	1:C:717:MET:HG2	1.70	0.74
1:B:460:VAL:HG21	1:B:481:ARG:HD2	1.70	0.73
1:D:500:ILE:HD11	1:D:502:LYS:CA	2.17	0.73
1:D:632:ALA:HB3	1:D:720:GLY:HA3	1.70	0.73
1:B:499:MET:SD	1:B:689:VAL:HG21	2.28	0.73
1:D:632:ALA:HB2	1:D:720:GLY:N	2.01	0.73
1:A:636:ALA:O	1:A:638:GLN:N	2.23	0.72
1:B:732:THR:CG2	1:B:736:SER:HB3	2.20	0.72
2:E:83:PHE:HA	2:E:99:ARG:HH12	1.55	0.72
1:A:624:ARG:NH1	1:D:619[B]:PHE:CE1	2.57	0.71
1:D:393:VAL:HG22	1:D:470:VAL:HG23	1.71	0.71
1:D:500:ILE:CD1	1:D:502:LYS:HA	2.21	0.70
2:G:34:LEU:HD11	2:G:173:TYR:HB2	1.73	0.69
1:A:637:LYS:HD3	1:A:637:LYS:N	2.08	0.69
1:B:500:ILE:CD1	1:B:694:GLY:HA2	2.16	0.69
1:D:632:ALA:CB	1:D:720:GLY:HA3	2.23	0.69

Continued on next page...

Continued from previous page...

Atom-1	Atom-2	Interatomic distance (Å)	Clash overlap (Å)
1:B:427:GLU:HG2	1:B:749:LEU:HD21	1.76	0.68
1:A:637:LYS:O	1:A:638:GLN:HG3	1.95	0.67
1:D:500:ILE:O	1:D:716:THR:HA	1.94	0.67
1:A:636:ALA:HB3	1:A:637:LYS:CD	2.24	0.67
1:A:639:THR:HG23	1:A:641:ILE:CG2	2.25	0.66
1:D:499:MET:CE	1:D:698:TYR:HB3	2.26	0.66
1:A:637:LYS:O	1:A:639:THR:N	2.28	0.66
1:B:395:THR:HG22	1:B:396:ILE:H	1.61	0.65
1:B:645:THR:HG23	1:B:670:MET:CE	2.26	0.65
1:D:395:THR:HG22	1:D:396:ILE:H	1.60	0.65
1:D:393:VAL:HG22	1:D:470:VAL:CG2	2.27	0.65
1:A:638:GLN:HG3	1:A:639:THR:HG22	1.78	0.65
1:D:428:ILE:HD11	1:D:742:VAL:CG2	2.26	0.65
1:C:637:LYS:NZ	1:C:637:LYS:CA	2.58	0.65
1:D:632:ALA:HB2	1:D:719:VAL:O	1.97	0.65
1:C:500:ILE:HD13	1:C:501:LYS:H	1.62	0.65
1:B:501:LYS:HB3	1:B:689:VAL:O	1.98	0.64
1:D:635:LEU:HD11	1:D:697:ALA:CB	2.28	0.64
1:C:502:LYS:HA	1:C:717:MET:HG2	1.79	0.64
2:H:70:GLU:HA	2:H:74:ARG:HE	1.62	0.64
1:C:396:ILE:O	1:C:402:VAL:CG1	2.47	0.63
1:B:738:LEU:HD23	1:B:742:VAL:HG23	1.81	0.63
1:D:499:MET:SD	1:D:500:ILE:N	2.72	0.63
1:A:624:ARG:HG2	1:D:622:VAL:HG21	1.81	0.62
2:F:24:MET:SD	2:F:149:ASN:ND2	2.72	0.62
1:D:498:ILE:HD11	1:D:632:ALA:HB1	1.81	0.62
1:B:393:VAL:HG13	1:B:438:LEU:HD23	1.82	0.62
1:A:636:ALA:HB3	1:A:637:LYS:NZ	2.15	0.62
1:B:460:VAL:HG21	1:B:481:ARG:CD	2.30	0.62
1:C:579:ALA:O	1:D:583:GLN:NE2	2.32	0.62
1:C:500:ILE:HG22	1:C:717:MET:CG	2.29	0.61
1:C:634:ASP:OD1	1:C:635:LEU:N	2.33	0.61
1:A:637:LYS:C	1:A:639:THR:N	2.44	0.61
1:C:500:ILE:HG23	1:C:501:LYS:C	2.20	0.61
1:D:641:ILE:HG12	1:D:695:LYS:HA	1.81	0.61
1:A:639:THR:OG1	1:A:640:GLU:N	2.29	0.61
1:C:502:LYS:N	1:C:716:THR:HA	2.16	0.61
2:G:95:GLU:OE1	2:G:95:GLU:N	2.26	0.61
1:B:501:LYS:H	1:B:689:VAL:HB	1.66	0.61
1:B:463:LEU:HD21	1:B:471:ALA:HB2	1.82	0.60
1:C:623:GLU:O	1:C:624:ARG:C	2.40	0.60

Continued on next page...

Continued from previous page...

Atom-1	Atom-2	Interatomic distance (Å)	Clash overlap (Å)
1:A:631:SER:OG	1:A:632:ALA:N	2.24	0.60
1:A:712:LYS:HA	1:A:714:CYS:N	2.17	0.59
2:G:82:HIS:O	2:G:99:ARG:NH2	2.35	0.59
1:C:472:VAL:HG12	1:C:472:VAL:O	2.02	0.59
1:A:476:THR:CG2	1:A:726:LYS:HD3	2.33	0.58
1:A:633:GLU:N	1:A:636:ALA:CA	2.66	0.58
1:A:679:VAL:HG12	1:A:680:ARG:N	2.18	0.58
1:C:501:LYS:O	1:C:502:LYS:C	2.41	0.58
2:E:12:ILE:HD11	2:E:195:VAL:HG11	1.84	0.58
1:A:393:VAL:HG23	1:A:438:LEU:HD23	1.86	0.58
2:F:92:ASP:HB2	2:F:95:GLU:HB2	1.86	0.58
1:A:472:VAL:HG12	1:A:472:VAL:O	2.04	0.58
2:H:37:ARG:HG2	2:H:56:GLU:OE2	2.04	0.58
1:A:502:LYS:N	1:A:715:ASP:O	2.35	0.58
1:A:633:GLU:N	1:A:636:ALA:HA	2.19	0.57
1:A:637:LYS:CD	1:A:643:TYR:HE2	2.15	0.57
1:A:712:LYS:HA	1:A:714:CYS:H	1.68	0.57
1:B:500:ILE:HG13	1:B:501:LYS:C	2.25	0.57
1:D:499:MET:HE3	1:D:698:TYR:HB3	1.86	0.57
2:H:64:TRP:HB2	2:H:65:ARG:HD3	1.86	0.57
1:C:633:GLU:O	1:C:637:LYS:HG2	2.04	0.57
1:A:679:VAL:HG12	1:A:680:ARG:H	1.68	0.57
1:A:393:VAL:HG12	1:A:470:VAL:HB	1.87	0.57
1:D:739:ARG:O	1:D:742:VAL:HG12	2.04	0.57
1:B:665:LYS:NZ	1:C:721:GLY:HA3	2.20	0.56
1:A:633:GLU:CA	1:A:636:ALA:CA	2.74	0.56
1:B:645:THR:HG23	1:B:670:MET:HE1	1.86	0.56
1:D:472:VAL:HG12	1:D:472:VAL:O	2.06	0.56
1:D:494:LEU:HD22	1:D:728:TYR:CZ	2.40	0.56
1:B:472:VAL:HG12	1:B:472:VAL:O	2.06	0.56
2:H:37:ARG:NH2	2:H:58:MET:SD	2.79	0.56
1:A:639:THR:O	1:A:641:ILE:N	2.38	0.56
1:B:423:GLU:HB2	1:B:758:LEU:HD21	1.87	0.56
1:A:630:GLU:HA	1:A:633:GLU:CB	2.35	0.56
1:C:500:ILE:HG23	1:C:502:LYS:N	2.21	0.56
1:C:499:MET:HG2	1:C:500:ILE:N	2.21	0.56
2:G:149:ASN:ND2	2:G:186:PHE:HB2	2.21	0.56
1:A:476:THR:HG21	1:A:726:LYS:HD3	1.89	0.55
2:G:22:SER:O	2:G:26:ILE:HG12	2.06	0.55
1:A:630:GLU:O	1:A:634:ASP:CA	2.55	0.55
1:A:635:LEU:HD13	1:A:638:GLN:HB3	1.88	0.54

Continued on next page...

Continued from previous page...

Atom-1	Atom-2	Interatomic distance (Å)	Clash overlap (Å)
2:H:58:MET:HG2	2:H:69:LEU:HD21	1.87	0.54
1:B:501:LYS:HD2	1:B:715:ASP:O	2.06	0.54
2:F:95:GLU:OE1	2:F:99:ARG:NH2	2.41	0.54
2:F:37:ARG:HA	2:F:58:MET:HA	1.89	0.54
1:A:624:ARG:CZ	1:D:619[A]:PHE:HA	2.38	0.54
1:A:636:ALA:HB3	1:A:637:LYS:CE	2.38	0.54
1:A:637:LYS:HG2	1:A:638:GLN:CA	2.37	0.54
1:D:499:MET:SD	1:D:499:MET:C	2.86	0.54
2:E:82:HIS:CD2	2:E:103:ALA:HA	2.42	0.54
1:A:395:THR:HG22	1:A:396:ILE:H	1.73	0.53
1:A:624:ARG:CZ	1:D:619[B]:PHE:HA	2.38	0.53
1:C:502:LYS:CA	1:C:717:MET:HG2	2.37	0.53
1:A:638:GLN:OE1	1:A:639:THR:CA	2.56	0.53
1:B:501:LYS:O	1:B:502:LYS:O	2.26	0.53
1:D:500:ILE:HD12	1:D:501:LYS:C	2.29	0.53
1:A:494:LEU:HD22	1:A:728:TYR:CZ	2.44	0.52
1:C:494:LEU:HD22	1:C:728:TYR:CZ	2.45	0.52
1:C:456:TRP:CE3	1:C:460:VAL:HG11	2.44	0.52
2:H:95:GLU:OE1	2:H:95:GLU:N	2.36	0.52
1:B:395:THR:CG2	1:B:402:VAL:HG21	2.39	0.52
1:B:738:LEU:HD23	1:B:742:VAL:CG2	2.39	0.52
1:C:500:ILE:CG2	1:C:502:LYS:HA	2.39	0.52
2:F:205:GLN:OE1	2:F:205:GLN:HA	2.10	0.52
1:A:679:VAL:CG1	1:A:684:GLU:CB	2.87	0.52
1:C:499:MET:HE2	1:C:499:MET:O	2.09	0.52
1:A:637:LYS:CG	1:A:638:GLN:H	2.18	0.52
1:B:476:THR:CG2	1:B:726:LYS:HD3	2.39	0.52
1:A:641:ILE:HG23	1:A:641:ILE:O	2.09	0.52
1:D:395:THR:HG22	1:D:396:ILE:N	2.25	0.52
2:G:30:THR:OG1	2:G:178:SER:OG	2.24	0.52
2:H:26:ILE:O	2:H:30:THR:HG23	2.10	0.52
1:A:637:LYS:O	1:A:639:THR:HG22	2.09	0.52
2:G:131:ARG:HG3	2:G:133:SER:H	1.74	0.52
1:B:500:ILE:HG13	1:B:501:LYS:N	2.16	0.51
1:C:447:GLY:HA3	1:C:460:VAL:HG12	1.92	0.51
2:H:66:THR:HG23	2:H:80:ILE:HG12	1.91	0.51
1:C:536:LEU:HB2	1:C:597:VAL:HG11	1.93	0.51
1:D:395:THR:CG2	1:D:402:VAL:HG21	2.41	0.51
1:D:645:THR:HG22	1:D:646:LEU:N	2.25	0.51
2:E:95:GLU:OE2	2:E:99:ARG:HD2	2.10	0.51
1:A:636:ALA:O	1:A:637:LYS:C	2.49	0.51

Continued on next page...

Continued from previous page...

Atom-1	Atom-2	Interatomic distance (Å)	Clash overlap (Å)
1:D:492:MET:CE	1:D:759:LYS:HD3	2.41	0.51
2:G:5:ASP:OD1	2:G:5:ASP:N	2.44	0.51
2:G:41:ARG:H	2:G:78:LYS:NZ	2.09	0.51
1:D:501:LYS:CB	1:D:690:ARG:CA	2.75	0.50
1:D:473:ALA:HB1	1:D:474:PRO:HD2	1.93	0.50
1:D:580:PHE:HA	1:D:605:THR:OG1	2.12	0.50
2:E:33:TRP:HB2	2:E:62:GLY:HA2	1.92	0.50
2:E:37:ARG:NH2	2:E:56:GLU:HB3	2.25	0.50
1:D:499:MET:HE1	1:D:698:TYR:HB3	1.93	0.49
2:F:39:VAL:HG22	2:F:41:ARG:H	1.77	0.49
1:A:645:THR:HG22	1:A:646:LEU:N	2.27	0.49
1:D:449:ARG:HG3	1:D:456:TRP:CE2	2.48	0.49
1:B:665:LYS:NZ	1:C:721:GLY:CA	2.76	0.49
1:D:498:ILE:CD1	1:D:632:ALA:HB1	2.42	0.49
1:D:498:ILE:HD12	1:D:719:VAL:HG23	1.95	0.49
1:C:396:ILE:O	1:C:402:VAL:HG12	2.12	0.49
1:D:632:ALA:CB	1:D:720:GLY:CA	2.90	0.49
1:C:681:THR:HG23	1:C:684:GLU:H	1.78	0.49
1:D:397:LEU:HD23	1:D:440:ILE:HG21	1.95	0.49
1:A:490:PRO:HA	1:A:728:TYR:O	2.13	0.49
1:B:405:LYS:HB2	1:B:416:ARG:O	2.12	0.49
1:A:621:THR:O	1:A:622:VAL:C	2.52	0.49
1:D:641:ILE:HG23	1:D:695:LYS:CA	2.42	0.49
2:F:33:TRP:HB2	2:F:62:GLY:HA2	1.95	0.49
1:A:636:ALA:CB	1:A:637:LYS:CD	2.87	0.48
1:A:581:MET:HG2	1:D:602:TRP:HB3	1.95	0.48
1:B:459:MET:O	1:B:463:LEU:HD23	2.12	0.48
1:B:501:LYS:C	1:B:501:LYS:HE2	2.33	0.48
2:E:60:HIS:HD2	2:E:69:LEU:HD13	1.77	0.48
1:A:512:SER:O	1:A:512:SER:OG	2.31	0.48
2:F:31:ASP:HA	2:F:62:GLY:HA3	1.94	0.48
1:A:429:ALA:HA	1:A:434:TYR:CE1	2.48	0.48
2:G:131:ARG:HE	2:G:132:HIS:H	1.61	0.48
1:A:624:ARG:NH1	1:D:619[A]:PHE:CD2	2.76	0.48
1:A:638:GLN:OE1	1:A:639:THR:CB	2.52	0.48
1:B:395:THR:HG22	1:B:396:ILE:N	2.27	0.48
2:H:31:ASP:HA	2:H:62:GLY:HA3	1.95	0.48
1:B:494:LEU:HD12	1:B:701:GLU:HB3	1.95	0.48
1:B:476:THR:HG21	1:B:726:LYS:HD3	1.96	0.48
1:A:616:LEU:HG	1:A:620:LEU:HD12	1.94	0.48
1:B:501:LYS:HB3	1:B:689:VAL:C	2.35	0.48

Continued on next page...

Continued from previous page...

Atom-1	Atom-2	Interatomic distance (Å)	Clash overlap (Å)
1:D:449:ARG:HG3	1:D:456:TRP:CZ2	2.49	0.48
1:C:428:ILE:CD1	1:C:730:ILE:HD13	2.44	0.47
1:C:499:MET:HG2	1:C:500:ILE:O	2.13	0.47
1:C:500:ILE:CD1	1:C:501:LYS:H	2.26	0.47
1:C:631:SER:O	1:C:634:ASP:OD1	2.31	0.47
1:D:476:THR:HG21	1:D:726:LYS:HD2	1.96	0.47
2:G:128:HIS:CE1	2:G:131:ARG:H	2.32	0.47
1:A:713:PRO:O	1:A:715:ASP:N	2.45	0.47
1:B:732:THR:HG22	1:B:736:SER:HB3	1.95	0.47
1:A:636:ALA:C	1:A:638:GLN:N	2.64	0.47
1:A:621:THR:O	1:A:623:GLU:N	2.48	0.47
1:B:792:PHE:HB3	2:F:154:ILE:HD13	1.96	0.47
1:D:428:ILE:CD1	1:D:742:VAL:HG23	2.41	0.47
1:A:617:ALA:O	1:A:618:ALA:C	2.52	0.47
1:B:494:LEU:HD23	1:B:727:GLY:HA2	1.95	0.47
1:D:470:VAL:HG12	1:D:732:THR:HG22	1.97	0.46
2:G:65:ARG:HH11	2:G:65:ARG:HG2	1.80	0.46
1:A:636:ALA:C	1:A:637:LYS:HD3	2.36	0.46
1:D:501:LYS:HA	1:D:715:ASP:O	2.15	0.46
1:C:473:ALA:HB1	1:C:474:PRO:HD2	1.98	0.46
1:D:645:THR:HG22	1:D:646:LEU:H	1.80	0.46
1:D:730:ILE:HD12	1:D:746:VAL:CG2	2.46	0.46
1:A:630:GLU:O	1:A:634:ASP:N	2.49	0.46
2:E:34:LEU:HD11	2:E:173:TYR:HB2	1.97	0.46
1:B:460:VAL:CG2	1:B:481:ARG:HD2	2.42	0.46
1:D:500:ILE:O	1:D:716:THR:CA	2.64	0.46
2:E:202:GLU:HA	2:E:205:GLN:HG3	1.98	0.46
2:G:31:ASP:HA	2:G:62:GLY:HA3	1.99	0.46
1:A:618:ALA:O	1:A:619:PHE:C	2.52	0.45
1:D:632:ALA:HB2	1:D:720:GLY:CA	2.46	0.45
1:A:395:THR:HG22	1:A:396:ILE:N	2.32	0.45
1:B:501:LYS:O	1:B:501:LYS:HG3	2.17	0.45
1:C:419:GLY:O	1:C:423:GLU:OE1	2.33	0.45
1:A:616:LEU:O	1:A:617:ALA:C	2.54	0.45
1:D:498:ILE:HD12	1:D:719:VAL:O	2.16	0.45
1:D:642:ALA:O	1:D:696:TYR:HA	2.17	0.45
1:A:631:SER:O	1:A:635:LEU:HD12	2.17	0.45
1:B:494:LEU:HD12	1:B:701:GLU:OE1	2.16	0.45
1:C:501:LYS:HA	1:C:716:THR:HG22	1.99	0.45
2:H:105:SER:O	2:H:105:SER:OG	2.33	0.45
1:A:635:LEU:O	1:A:636:ALA:CB	2.64	0.45

Continued on next page...

Continued from previous page...

Atom-1	Atom-2	Interatomic distance (Å)	Clash overlap (Å)
1:A:638:GLN:OE1	1:A:639:THR:HA	2.17	0.45
1:B:500:ILE:HG13	1:B:501:LYS:O	2.17	0.45
2:G:150:ILE:HD11	2:G:186:PHE:CZ	2.51	0.45
1:A:637:LYS:CD	1:A:638:GLN:H	2.30	0.45
1:A:494:LEU:CD2	1:A:728:TYR:CE1	3.00	0.45
1:D:500:ILE:CD1	1:D:502:LYS:CA	2.90	0.45
1:B:500:ILE:O	1:B:502:LYS:N	2.50	0.44
1:A:792:PHE:HB3	2:E:154:ILE:HD13	1.98	0.44
1:A:445:LYS:HD2	1:A:457:ASN:HD22	1.83	0.44
1:A:637:LYS:HD2	1:A:643:TYR:CZ	2.51	0.44
1:B:501:LYS:HE2	1:B:502:LYS:O	2.16	0.44
2:G:40:CYS:HA	2:G:78:LYS:NZ	2.32	0.44
1:A:402:VAL:HG23	1:A:421:CYS:HB2	1.98	0.44
1:B:499:MET:SD	1:B:499:MET:O	2.75	0.44
1:C:414:ASN:OD1	1:C:438:LEU:HB2	2.17	0.44
2:H:11:LEU:O	2:H:15:VAL:HG12	2.18	0.44
1:C:516:PRO:O	1:C:615:ASN:ND2	2.45	0.44
2:F:34:LEU:HD11	2:F:173:TYR:HB2	2.00	0.44
1:A:641:ILE:O	1:A:642:ALA:C	2.55	0.44
1:D:670:MET:HE2	1:D:699:LEU:HD12	2.00	0.44
2:E:73:PHE:O	2:E:76:VAL:HG12	2.17	0.44
1:B:501:LYS:HA	1:B:716:THR:HG22	1.99	0.44
2:G:20:ALA:HB2	2:G:188:ILE:HG22	2.00	0.44
1:D:485:ILE:HD12	1:D:731:ALA:HB1	1.99	0.44
1:A:621:THR:C	1:A:623:GLU:N	2.70	0.43
1:A:623:GLU:O	1:A:624:ARG:C	2.56	0.43
1:A:635:LEU:HD12	1:A:635:LEU:H	1.82	0.43
1:B:420:TYR:CE2	1:B:758:LEU:HB3	2.52	0.43
1:A:634:ASP:N	1:A:636:ALA:H	2.15	0.43
1:C:494:LEU:CD2	1:C:728:TYR:CE1	3.01	0.43
1:C:785:LEU:HD21	2:G:154:ILE:HG23	2.00	0.43
2:F:10:MET:O	2:F:14:THR:HG23	2.18	0.43
1:B:460:VAL:O	1:B:464:VAL:HG23	2.18	0.43
1:B:749:LEU:HD22	1:B:754:VAL:HG11	2.00	0.43
1:D:749:LEU:HD22	1:D:754:VAL:HG11	2.00	0.43
2:G:40:CYS:SG	2:G:68:CYS:N	2.92	0.43
1:B:542:PHE:CG	1:B:542:PHE:O	2.70	0.43
1:D:499:MET:CG	1:D:716:THR:HB	2.49	0.43
1:B:665:LYS:HZ3	1:C:721:GLY:HA3	1.83	0.43
2:E:60:HIS:CD2	2:E:69:LEU:HD13	2.53	0.43
1:C:637:LYS:HA	1:C:637:LYS:HZ2	1.73	0.43

Continued on next page...

Continued from previous page...

Atom-1	Atom-2	Interatomic distance (Å)	Clash overlap (Å)
1:B:393:VAL:CG1	1:B:438:LEU:HD23	2.48	0.43
1:C:635:LEU:HD12	1:C:635:LEU:HA	1.52	0.43
1:C:686:MET:O	1:C:689:VAL:HG22	2.18	0.43
2:E:84:PRO:HD3	2:E:99:ARG:NH1	2.34	0.43
2:E:93:THR:O	2:E:97:LEU:HG	2.19	0.43
2:G:65:ARG:NH2	2:G:77:CYS:HB2	2.33	0.43
1:D:499:MET:CG	1:D:500:ILE:N	2.82	0.43
1:A:395:THR:CG2	1:A:402:VAL:HG21	2.43	0.43
1:A:635:LEU:HD13	1:A:638:GLN:CB	2.49	0.43
1:A:502:LYS:HA	1:A:717:MET:HG2	2.01	0.42
1:A:536:LEU:HB2	1:A:597:VAL:HG11	2.00	0.42
1:B:717:MET:CE	1:B:719:VAL:HB	2.48	0.42
1:D:425:ALA:HA	1:D:428:ILE:HG22	2.00	0.42
1:D:541:ARG:HD2	1:D:541:ARG:HA	1.75	0.42
2:G:41:ARG:H	2:G:78:LYS:HZ2	1.67	0.42
1:A:637:LYS:HD2	1:A:643:TYR:OH	2.19	0.42
1:B:501:LYS:NZ	1:B:502:LYS:O	2.50	0.42
1:C:663:PHE:HE2	1:C:723:LEU:HD23	1.84	0.42
2:E:84:PRO:HD3	2:E:99:ARG:HH12	1.85	0.42
2:G:126:GLU:OE1	2:G:126:GLU:HA	2.18	0.42
2:H:61:SER:HB3	2:H:66:THR:HG22	2.00	0.42
1:C:617:ALA:O	1:C:621:THR:HG22	2.19	0.42
1:A:624:ARG:NH2	1:D:619[A]:PHE:HA	2.35	0.42
1:D:490:PRO:HA	1:D:728:TYR:O	2.19	0.42
1:D:502:LYS:N	1:D:715:ASP:O	2.53	0.42
2:G:128:HIS:O	2:G:128:HIS:ND1	2.51	0.42
1:D:391:TYR:CB	1:D:434:TYR:OH	2.67	0.42
1:D:787:ASN:OD1	1:D:787:ASN:N	2.52	0.42
2:E:160:ASN:HD22	2:E:160:ASN:N	2.16	0.42
1:A:473:ALA:HB1	1:A:474:PRO:HD2	2.00	0.42
1:A:541:ARG:HD3	1:A:541:ARG:HA	1.75	0.42
1:A:638:GLN:CD	1:A:638:GLN:C	2.77	0.42
1:A:689:VAL:HG23	1:A:696:TYR:O	2.19	0.42
1:C:396:ILE:HG21	1:C:446:TYR:CE1	2.55	0.42
1:A:634:ASP:C	1:A:636:ALA:N	2.67	0.42
1:C:428:ILE:HD11	1:C:730:ILE:CD1	2.49	0.42
2:F:24:MET:HG2	2:F:185:SER:OG	2.20	0.42
1:B:473:ALA:HB1	1:B:474:PRO:HD2	2.01	0.42
1:C:792:PHE:HB3	2:G:154:ILE:HD13	2.02	0.42
1:D:492:MET:HE1	1:D:759:LYS:HD3	2.02	0.42
1:D:632:ALA:CB	1:D:719:VAL:O	2.68	0.42

Continued on next page...

Continued from previous page...

Atom-1	Atom-2	Interatomic distance (Å)	Clash overlap (Å)
1:B:501:LYS:HA	1:B:716:THR:HA	2.01	0.42
1:D:419:GLY:O	1:D:423:GLU:OE1	2.38	0.42
1:A:476:THR:HG23	1:A:726:LYS:HD3	2.02	0.41
1:B:730:ILE:HD12	1:B:746:VAL:CG2	2.49	0.41
1:C:428:ILE:HD11	1:C:730:ILE:HD13	2.01	0.41
1:D:463:LEU:HD22	1:D:733:PRO:HD3	2.01	0.41
2:G:37:ARG:NH2	2:G:56:GLU:OE1	2.52	0.41
1:D:400:PRO:HA	1:D:403:MET:SD	2.61	0.41
1:D:499:MET:HG2	1:D:716:THR:HB	2.02	0.41
2:F:70:GLU:OE1	2:F:70:GLU:N	2.53	0.41
2:H:30:THR:HG21	2:H:177:TRP:HH2	1.84	0.41
1:B:645:THR:HG23	1:B:670:MET:HE3	1.99	0.41
1:D:420:TYR:CE2	1:D:758:LEU:HB3	2.55	0.41
1:D:460:VAL:O	1:D:464:VAL:HG23	2.20	0.41
2:F:70:GLU:HA	2:F:74:ARG:HG3	2.02	0.41
2:F:92:ASP:OD1	2:F:92:ASP:N	2.52	0.41
2:G:30:THR:HG1	2:G:178:SER:HG	1.52	0.41
1:D:476:THR:CG2	1:D:726:LYS:HD2	2.51	0.41
2:H:20:ALA:HB2	2:H:188:ILE:HG22	2.02	0.41
1:C:499:MET:SD	1:C:716:THR:HB	2.60	0.41
1:D:500:ILE:O	1:D:716:THR:CB	2.69	0.41
2:H:92:ASP:N	2:H:92:ASP:OD1	2.52	0.41
1:B:425:ALA:HA	1:B:428:ILE:HG22	2.03	0.41
1:B:501:LYS:HG2	1:B:690:ARG:HA	2.01	0.41
1:B:490:PRO:HA	1:B:728:TYR:O	2.21	0.41
1:B:624:ARG:HE	1:B:624:ARG:HB3	1.70	0.41
1:D:492:MET:HE2	1:D:759:LYS:HD3	2.02	0.41
2:G:128:HIS:HE1	2:G:131:ARG:HB3	1.85	0.41
2:G:134:VAL:O	2:G:137:SER:OG	2.34	0.41
1:A:633:GLU:N	1:A:636:ALA:C	2.73	0.41
1:C:645:THR:HG22	1:C:699:LEU:HB2	2.02	0.41
2:H:203:LYS:HE3	2:H:206:GLN:HE21	1.85	0.41
2:E:12:ILE:HD11	2:E:195:VAL:HG21	2.03	0.41
2:E:154:ILE:O	2:E:158:SER:OG	2.32	0.41
1:A:679:VAL:CG1	1:A:680:ARG:N	2.84	0.40
2:E:31:ASP:HA	2:E:62:GLY:HA3	2.02	0.40
1:A:645:THR:HG22	1:A:646:LEU:H	1.84	0.40
1:D:792:PHE:HB3	2:H:154:ILE:HD13	2.03	0.40
1:B:596:ILE:O	1:B:600:VAL:HG22	2.21	0.40
1:B:686:MET:O	1:B:689:VAL:HG22	2.20	0.40
1:C:645:THR:HB	1:C:651:THR:HG23	2.03	0.40

Continued on next page...

Continued from previous page...

Atom-1	Atom-2	Interatomic distance (Å)	Clash overlap (Å)
2:E:92:ASP:OD1	2:E:92:ASP:N	2.54	0.40
1:A:606:LEU:HD11	1:B:609:ILE:HD12	2.03	0.40
1:B:645:THR:CG2	1:B:670:MET:HE1	2.50	0.40
1:C:535:VAL:HG11	1:D:799:LEU:HD22	2.02	0.40
1:C:740:GLY:O	1:C:744:LEU:HD23	2.21	0.40
2:E:109:ILE:HG13	2:E:110:LEU:N	2.35	0.40

There are no symmetry-related clashes.

5.3 Torsion angles [i](#)

5.3.1 Protein backbone [i](#)

In the following table, the Percentiles column shows the percent Ramachandran outliers of the chain as a percentile score with respect to all PDB entries followed by that with respect to all EM entries.

The Analysed column shows the number of residues for which the backbone conformation was analysed, and the total number of residues.

Mol	Chain	Analysed	Favoured	Allowed	Outliers	Percentiles	
1	A	376/915 (41%)	355 (94%)	13 (4%)	8 (2%)	7	30
1	B	377/915 (41%)	365 (97%)	12 (3%)	0	100	100
1	C	374/915 (41%)	364 (97%)	10 (3%)	0	100	100
1	D	372/915 (41%)	362 (97%)	10 (3%)	0	100	100
2	E	168/314 (54%)	165 (98%)	3 (2%)	0	100	100
2	F	168/314 (54%)	167 (99%)	1 (1%)	0	100	100
2	G	168/314 (54%)	165 (98%)	3 (2%)	0	100	100
2	H	168/314 (54%)	165 (98%)	3 (2%)	0	100	100
All	All	2171/4916 (44%)	2108 (97%)	55 (2%)	8 (0%)	38	67

All (8) Ramachandran outliers are listed below:

Mol	Chain	Res	Type
1	A	633	GLU
1	A	636	ALA
1	A	637	LYS
1	A	638	GLN

Continued on next page...

Continued from previous page...

Mol	Chain	Res	Type
1	A	641	ILE
1	A	640	GLU
1	A	714	CYS
1	A	713	PRO

5.3.2 Protein sidechains [i](#)

In the following table, the Percentiles column shows the percent sidechain outliers of the chain as a percentile score with respect to all PDB entries followed by that with respect to all EM entries.

The Analysed column shows the number of residues for which the sidechain conformation was analysed, and the total number of residues.

Mol	Chain	Analysed	Rotameric	Outliers	Percentiles
1	A	273/778 (35%)	263 (96%)	10 (4%)	34 62
1	B	288/778 (37%)	275 (96%)	13 (4%)	27 58
1	C	274/778 (35%)	260 (95%)	14 (5%)	24 54
1	D	279/778 (36%)	264 (95%)	15 (5%)	22 52
2	E	140/273 (51%)	127 (91%)	13 (9%)	9 31
2	F	140/273 (51%)	130 (93%)	10 (7%)	14 44
2	G	139/273 (51%)	127 (91%)	12 (9%)	10 35
2	H	140/273 (51%)	131 (94%)	9 (6%)	17 47
All	All	1673/4204 (40%)	1577 (94%)	96 (6%)	24 50

All (96) residues with a non-rotameric sidechain are listed below:

Mol	Chain	Res	Type
1	A	537	PHE
1	A	541	ARG
1	A	542	PHE
1	A	581	MET
1	A	635	LEU
1	A	637	LYS
1	A	638	GLN
1	A	639	THR
1	A	726	LYS
1	A	783	LEU
1	B	404	LEU

Continued on next page...

Continued from previous page...

Mol	Chain	Res	Type
1	B	493	SER
1	B	499	MET
1	B	500	ILE
1	B	501	LYS
1	B	519	TYR
1	B	537	PHE
1	B	541	ARG
1	B	542	PHE
1	B	615	ASN
1	B	624	ARG
1	B	646	LEU
1	B	738	LEU
1	C	438	LEU
1	C	484	VAL
1	C	499	MET
1	C	500	ILE
1	C	519	TYR
1	C	537	PHE
1	C	541	ARG
1	C	542	PHE
1	C	587	ILE
1	C	622	VAL
1	C	635	LEU
1	C	637	LYS
1	C	726	LYS
1	C	734	LYS
1	D	398	GLU
1	D	467	ARG
1	D	470	VAL
1	D	479	LEU
1	D	498	ILE
1	D	499	MET
1	D	512	SER
1	D	519	TYR
1	D	541	ARG
1	D	542	PHE
1	D	543	SER
1	D	639	THR
1	D	738	LEU
1	D	781	SER
1	D	787	ASN
2	E	23	LEU

Continued on next page...

Continued from previous page...

Mol	Chain	Res	Type
2	E	24	MET
2	E	37	ARG
2	E	66	THR
2	E	99	ARG
2	E	106	VAL
2	E	128	HIS
2	E	149	ASN
2	E	173	TYR
2	E	198	HIS
2	E	204	HIS
2	E	205	GLN
2	E	206	GLN
2	F	24	MET
2	F	56	GLU
2	F	59	THR
2	F	61	SER
2	F	81	ASP
2	F	93	THR
2	F	102	ARG
2	F	129	ARG
2	F	173	TYR
2	F	208	ARG
2	G	37	ARG
2	G	40	CYS
2	G	66	THR
2	G	67	CYS
2	G	78	LYS
2	G	102	ARG
2	G	128	HIS
2	G	129	ARG
2	G	173	TYR
2	G	203	LYS
2	G	204	HIS
2	G	206	GLN
2	H	24	MET
2	H	65	ARG
2	H	69	LEU
2	H	74	ARG
2	H	78	LYS
2	H	79	LYS
2	H	102	ARG
2	H	132	HIS

Continued on next page...

Continued from previous page...

Mol	Chain	Res	Type
2	H	173	TYR

Sometimes sidechains can be flipped to improve hydrogen bonding and reduce clashes. All (5) such sidechains are listed below:

Mol	Chain	Res	Type
2	E	82	HIS
2	E	149	ASN
2	E	160	ASN
2	G	204	HIS
2	H	9	GLN

5.3.3 RNA [i](#)

There are no RNA molecules in this entry.

5.4 Non-standard residues in protein, DNA, RNA chains [i](#)

There are no non-standard protein/DNA/RNA residues in this entry.

5.5 Carbohydrates [i](#)

There are no monosaccharides in this entry.

5.6 Ligand geometry [i](#)

There are no ligands in this entry.

5.7 Other polymers [i](#)

There are no such residues in this entry.

5.8 Polymer linkage issues [i](#)

There are no chain breaks in this entry.

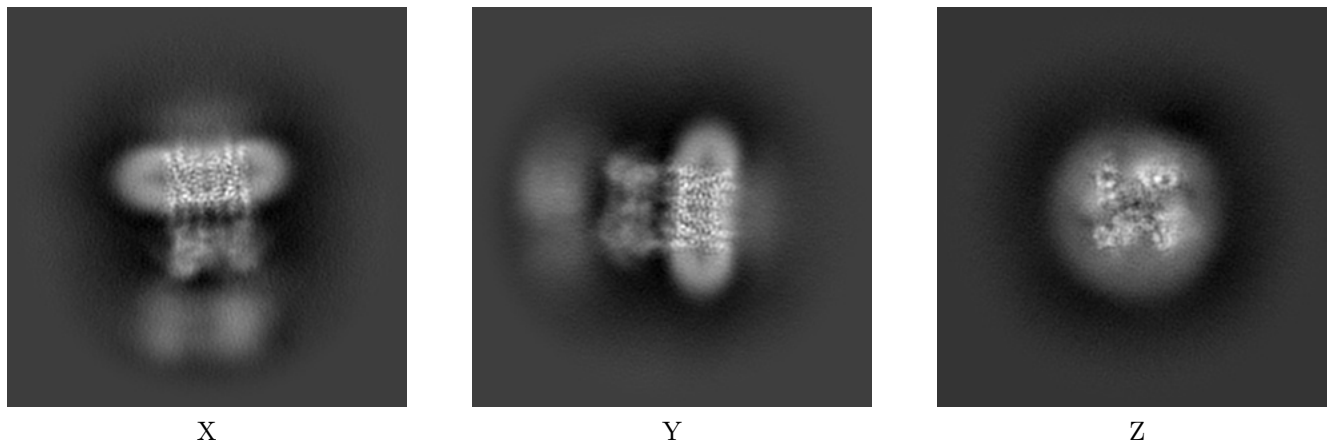
6 Map visualisation [i](#)

This section contains visualisations of the EMDB entry EMD-17394. These allow visual inspection of the internal detail of the map and identification of artifacts.

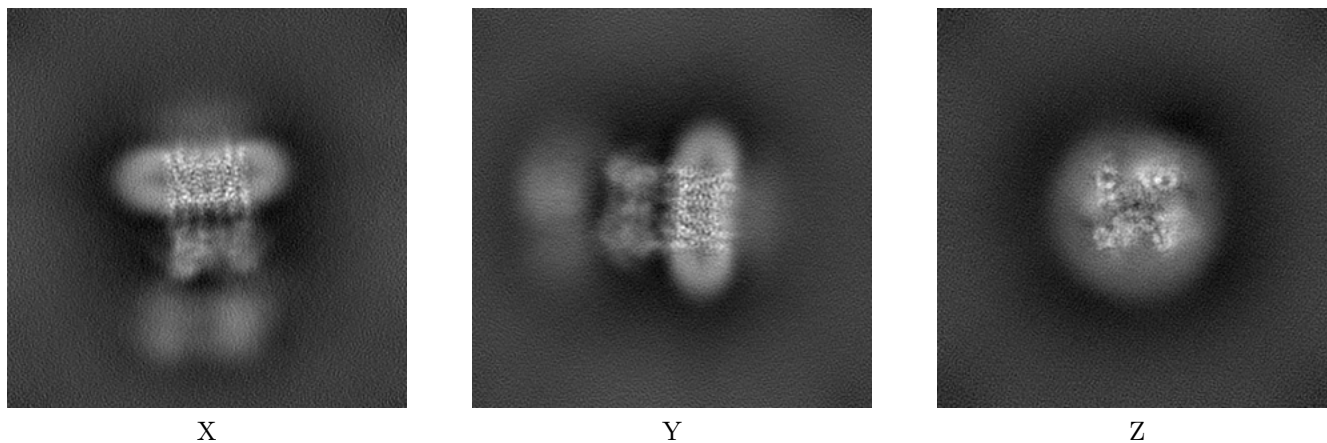
Images derived from a raw map, generated by summing the deposited half-maps, are presented below the corresponding image components of the primary map to allow further visual inspection and comparison with those of the primary map.

6.1 Orthogonal projections [i](#)

6.1.1 Primary map



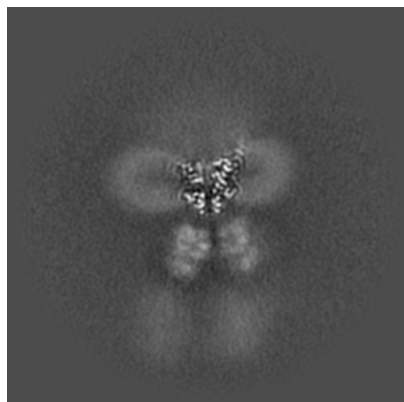
6.1.2 Raw map



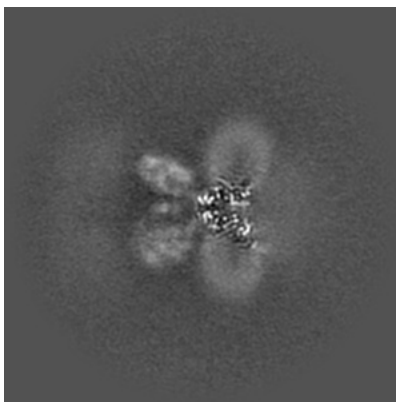
The images above show the map projected in three orthogonal directions.

6.2 Central slices [i](#)

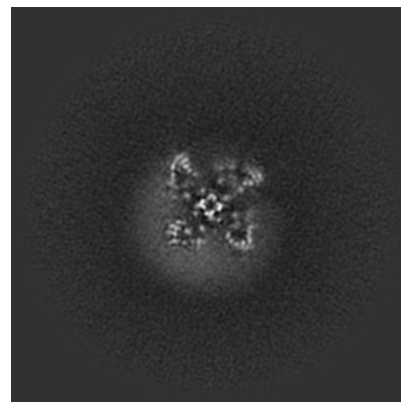
6.2.1 Primary map



X Index: 128

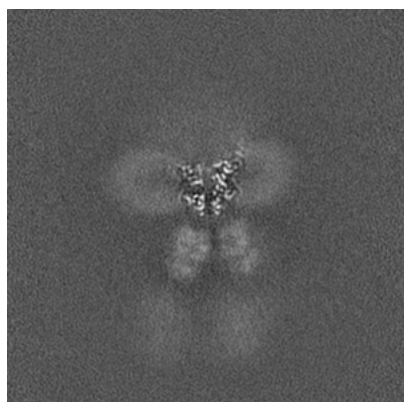


Y Index: 128

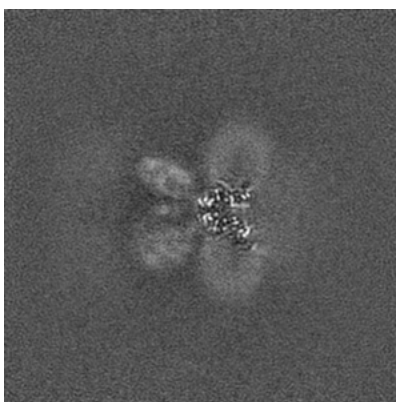


Z Index: 128

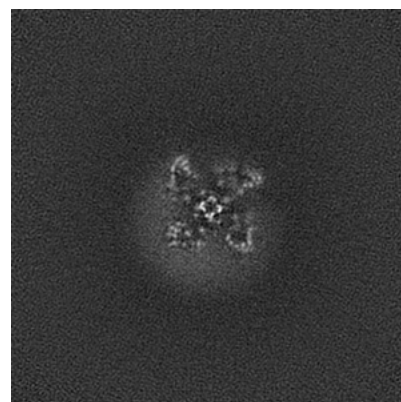
6.2.2 Raw map



X Index: 128



Y Index: 128

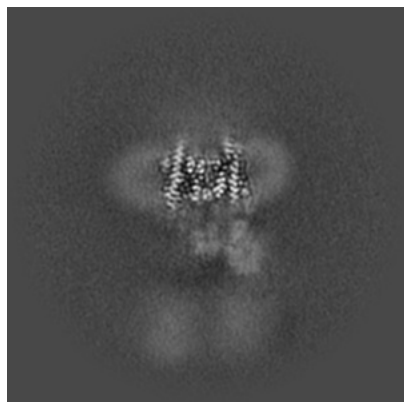


Z Index: 128

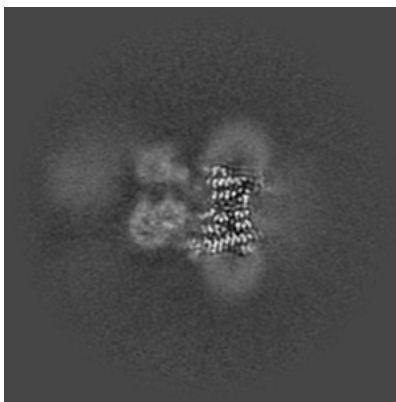
The images above show central slices of the map in three orthogonal directions.

6.3 Largest variance slices [i](#)

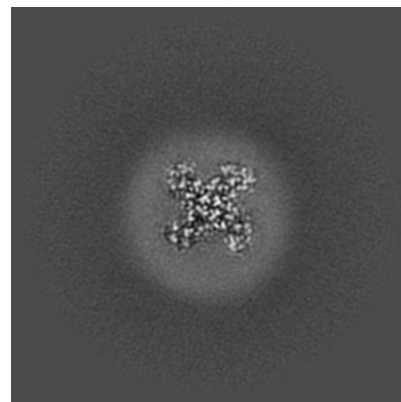
6.3.1 Primary map



X Index: 140

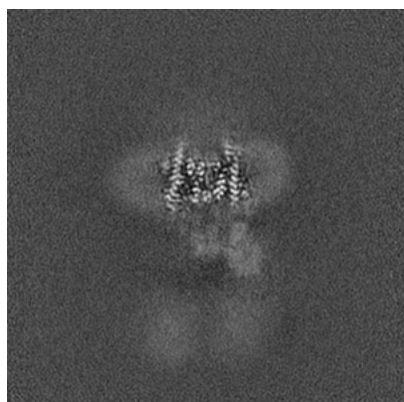


Y Index: 113

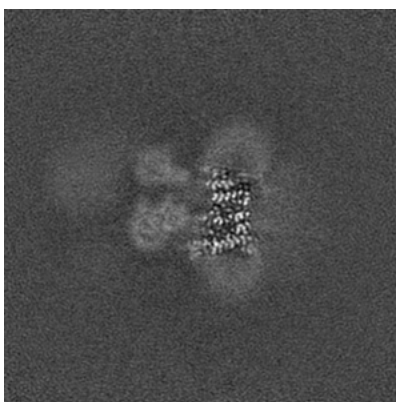


Z Index: 136

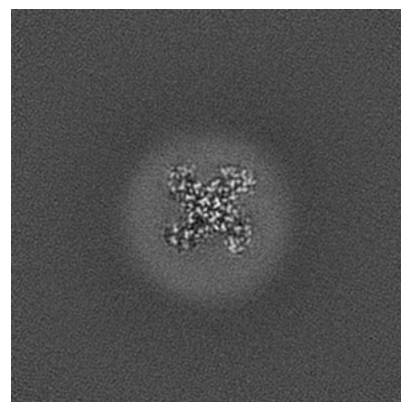
6.3.2 Raw map



X Index: 140



Y Index: 114

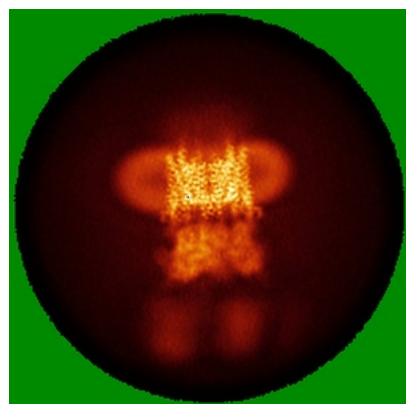


Z Index: 136

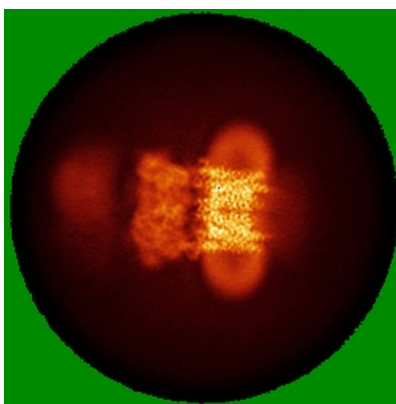
The images above show the largest variance slices of the map in three orthogonal directions.

6.4 Orthogonal standard-deviation projections (False-color) [i](#)

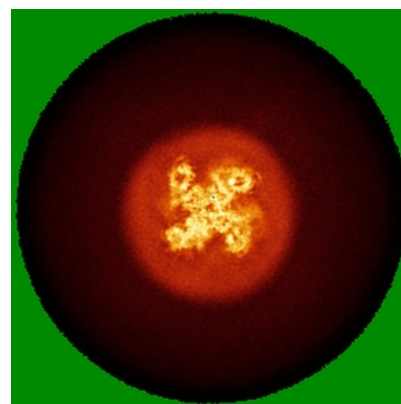
6.4.1 Primary map



X

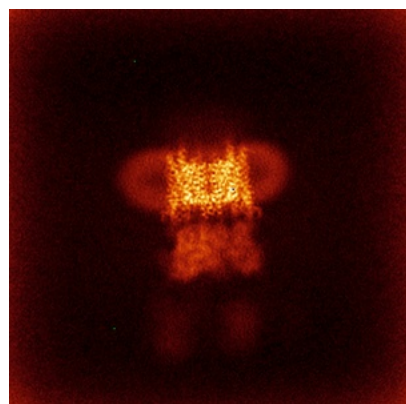


Y

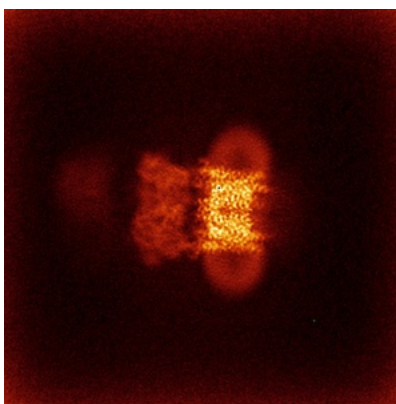


Z

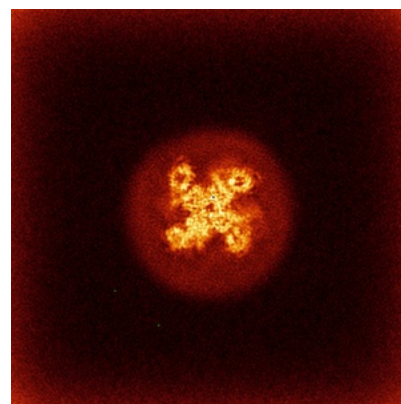
6.4.2 Raw map



X



Y

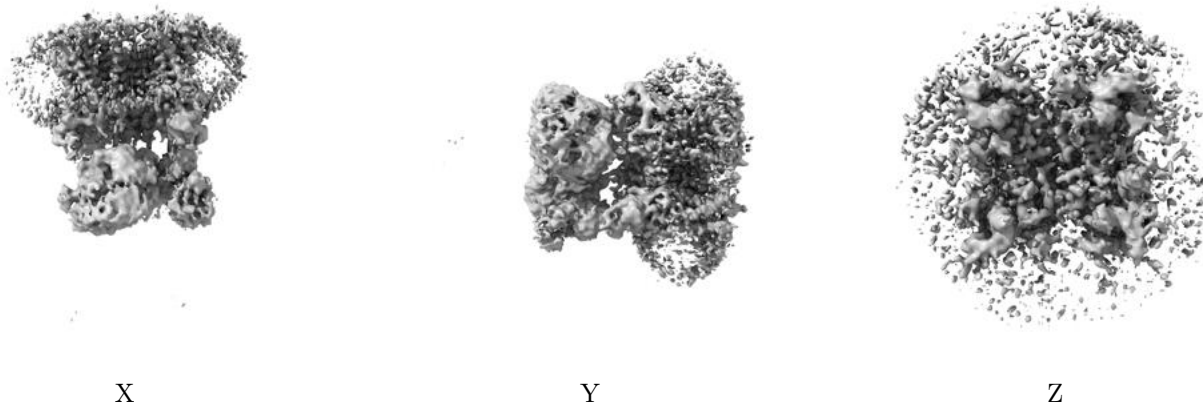


Z

The images above show the map standard deviation projections with false color in three orthogonal directions. Minimum values are shown in green, max in blue, and dark to light orange shades represent small to large values respectively.

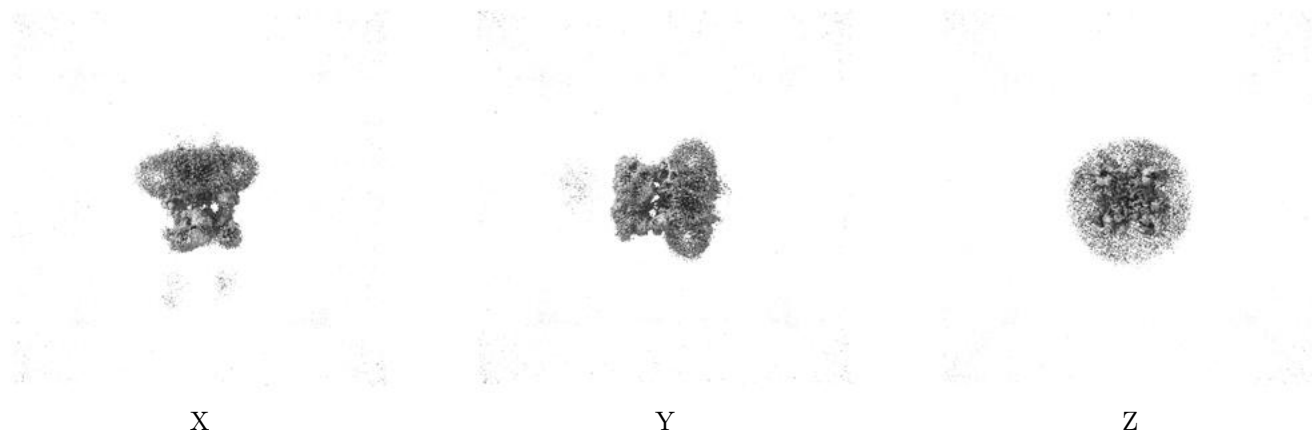
6.5 Orthogonal surface views [i](#)

6.5.1 Primary map



The images above show the 3D surface view of the map at the recommended contour level 0.25. These images, in conjunction with the slice images, may facilitate assessment of whether an appropriate contour level has been provided.

6.5.2 Raw map



These images show the 3D surface of the raw map. The raw map's contour level was selected so that its surface encloses the same volume as the primary map does at its recommended contour level.

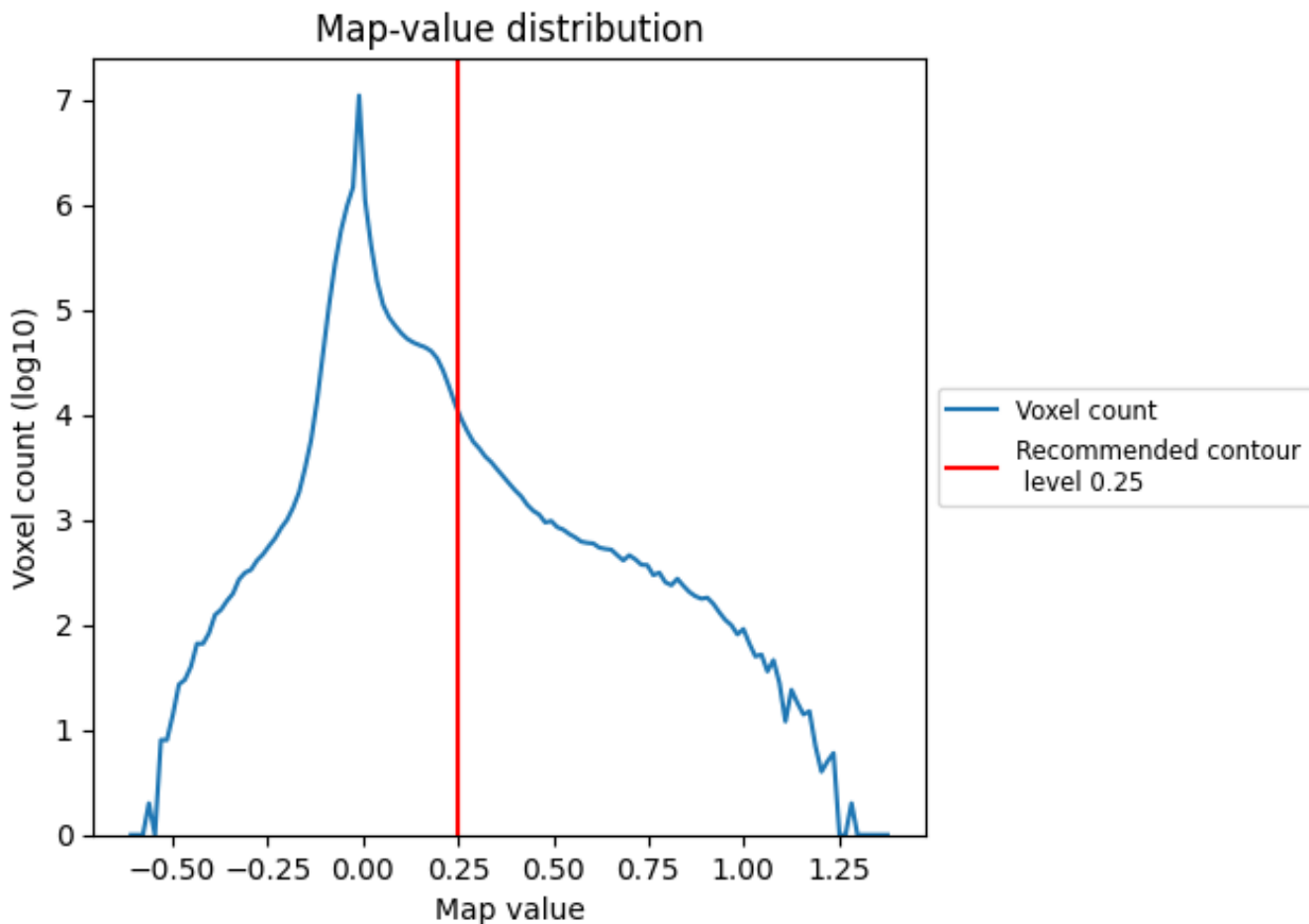
6.6 Mask visualisation [i](#)

This section was not generated. No masks/segmentation were deposited.

7 Map analysis [i](#)

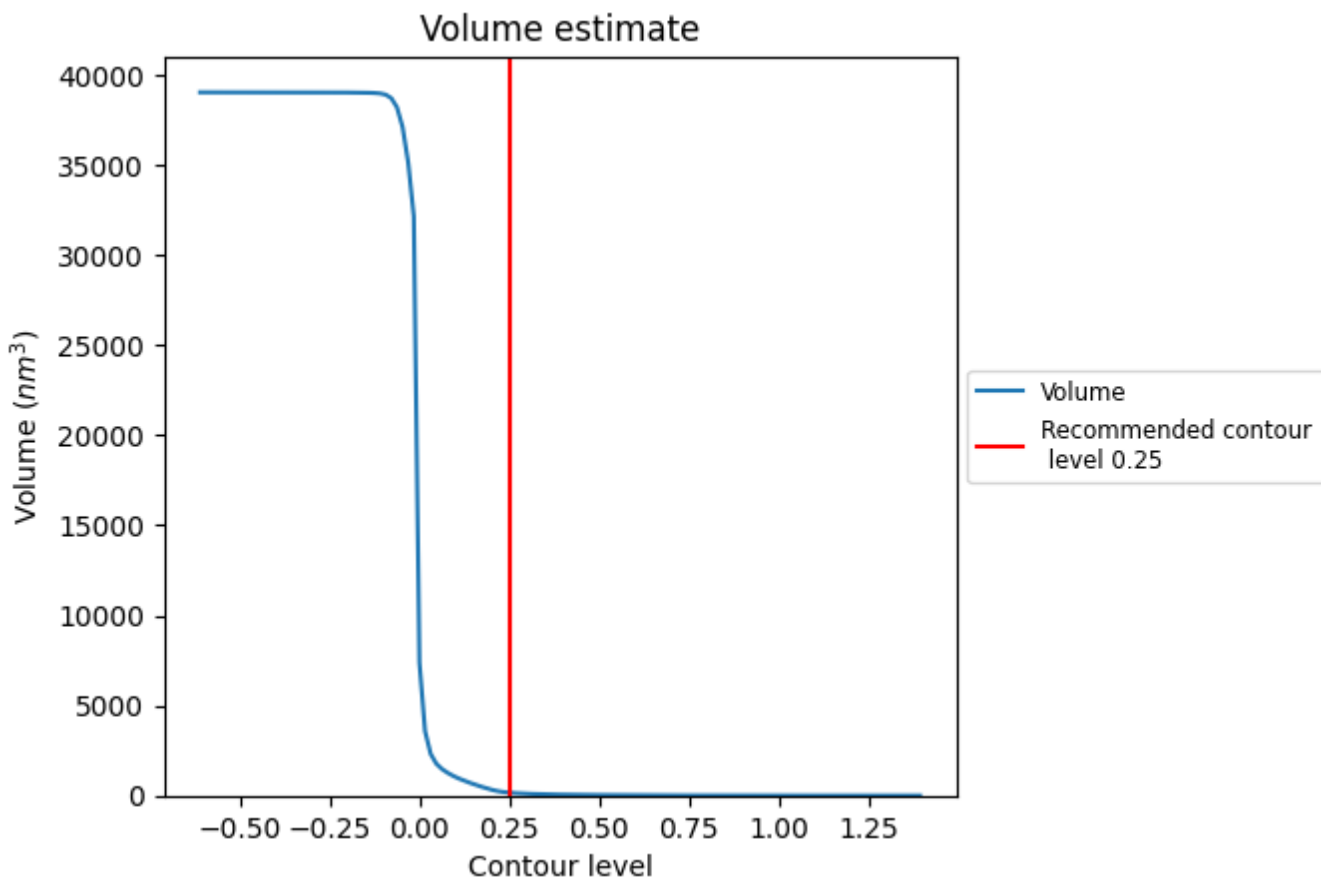
This section contains the results of statistical analysis of the map.

7.1 Map-value distribution [i](#)



The map-value distribution is plotted in 128 intervals along the x-axis. The y-axis is logarithmic. A spike in this graph at zero usually indicates that the volume has been masked.

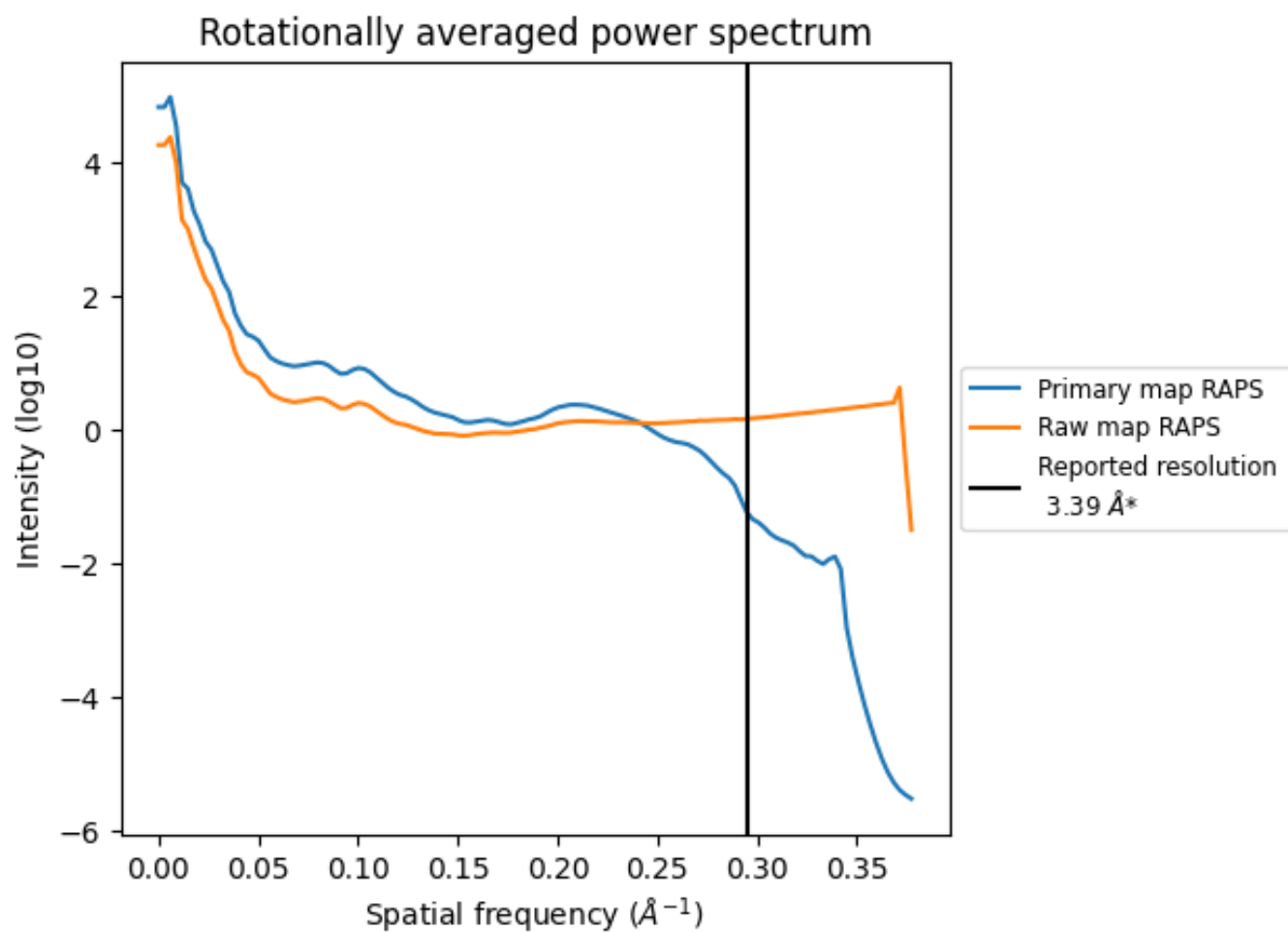
7.2 Volume estimate [i](#)



The volume at the recommended contour level is 161 nm³; this corresponds to an approximate mass of 146 kDa.

The volume estimate graph shows how the enclosed volume varies with the contour level. The recommended contour level is shown as a vertical line and the intersection between the line and the curve gives the volume of the enclosed surface at the given level.

7.3 Rotationally averaged power spectrum i

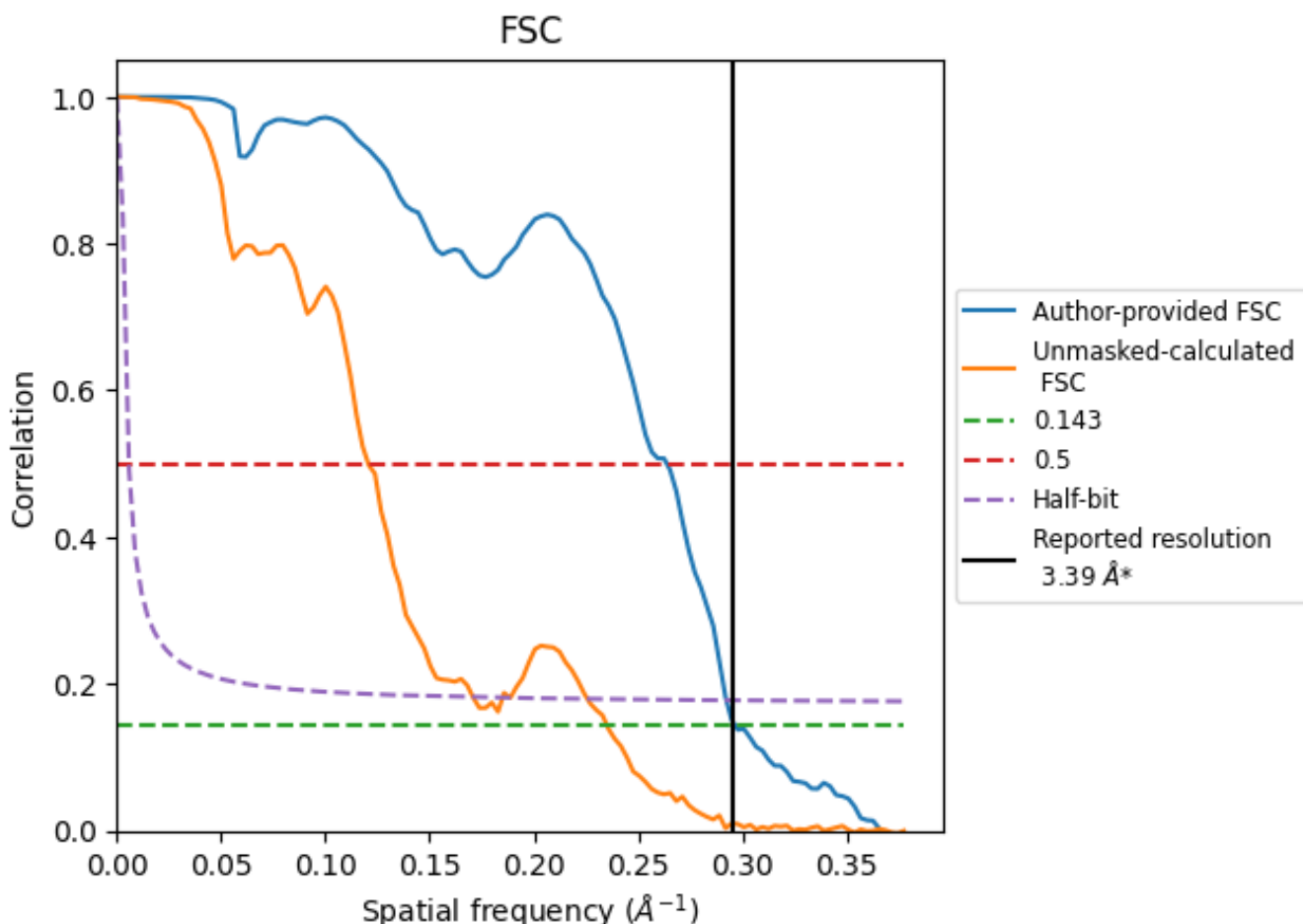


*Reported resolution corresponds to spatial frequency of 0.295 Å⁻¹

8 Fourier-Shell correlation [i](#)

Fourier-Shell Correlation (FSC) is the most commonly used method to estimate the resolution of single-particle and subtomogram-averaged maps. The shape of the curve depends on the imposed symmetry, mask and whether or not the two 3D reconstructions used were processed from a common reference. The reported resolution is shown as a black line. A curve is displayed for the half-bit criterion in addition to lines showing the 0.143 gold standard cut-off and 0.5 cut-off.

8.1 FSC [i](#)



*Reported resolution corresponds to spatial frequency of 0.295 Å⁻¹

8.2 Resolution estimates [i](#)

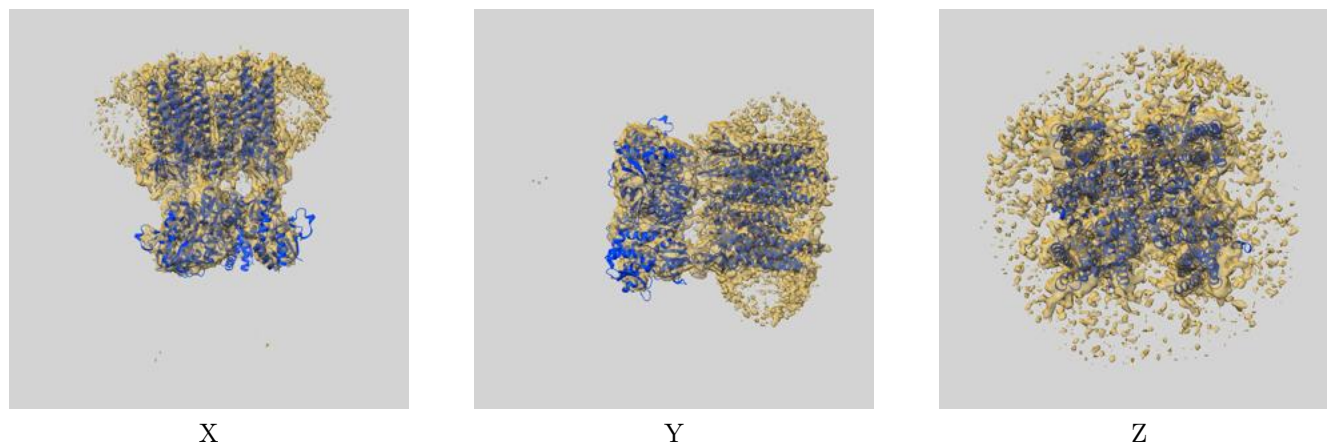
Resolution estimate (Å)	Estimation criterion (FSC cut-off)		
	0.143	0.5	Half-bit
Reported by author	3.39	-	-
Author-provided FSC curve	3.37	3.79	3.42
Unmasked-calculated*	4.25	8.29	5.85

*Resolution estimate based on FSC curve calculated by comparison of deposited half-maps. The value from deposited half-maps intersecting FSC 0.143 CUT-OFF 4.25 differs from the reported value 3.39 by more than 10 %

9 Map-model fit [i](#)

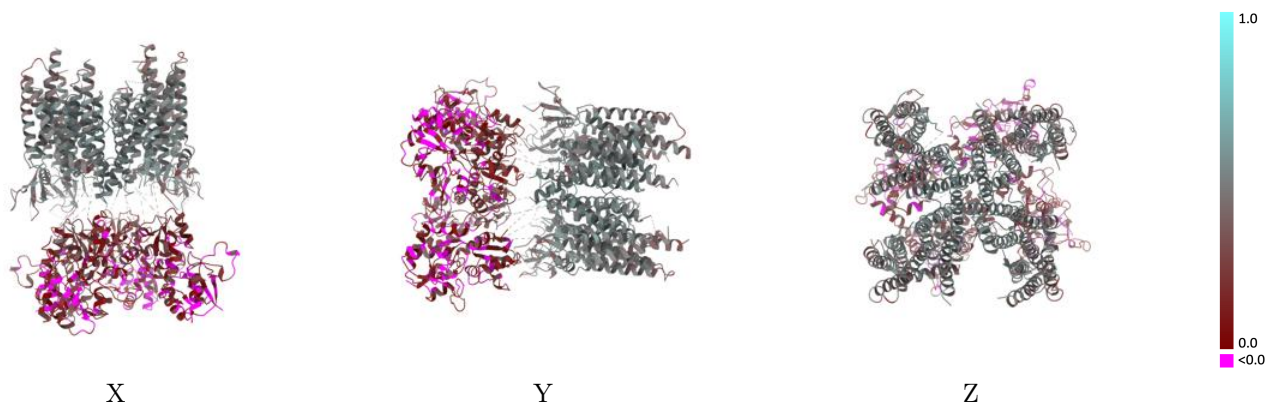
This section contains information regarding the fit between EMDB map EMD-17394 and PDB model 8P3T. Per-residue inclusion information can be found in section [3](#) on page [5](#).

9.1 Map-model overlay [i](#)



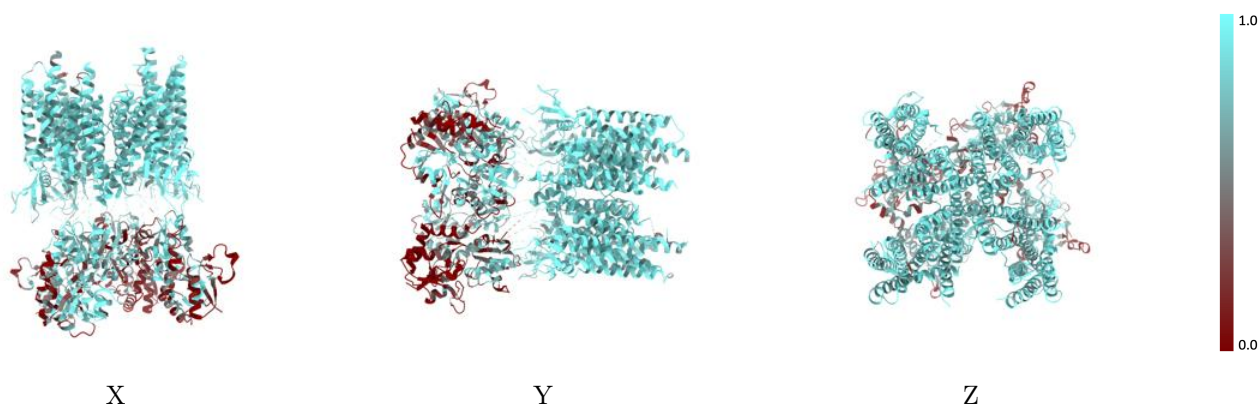
The images above show the 3D surface view of the map at the recommended contour level 0.25 at 50% transparency in yellow overlaid with a ribbon representation of the model coloured in blue. These images allow for the visual assessment of the quality of fit between the atomic model and the map.

9.2 Q-score mapped to coordinate model [i](#)



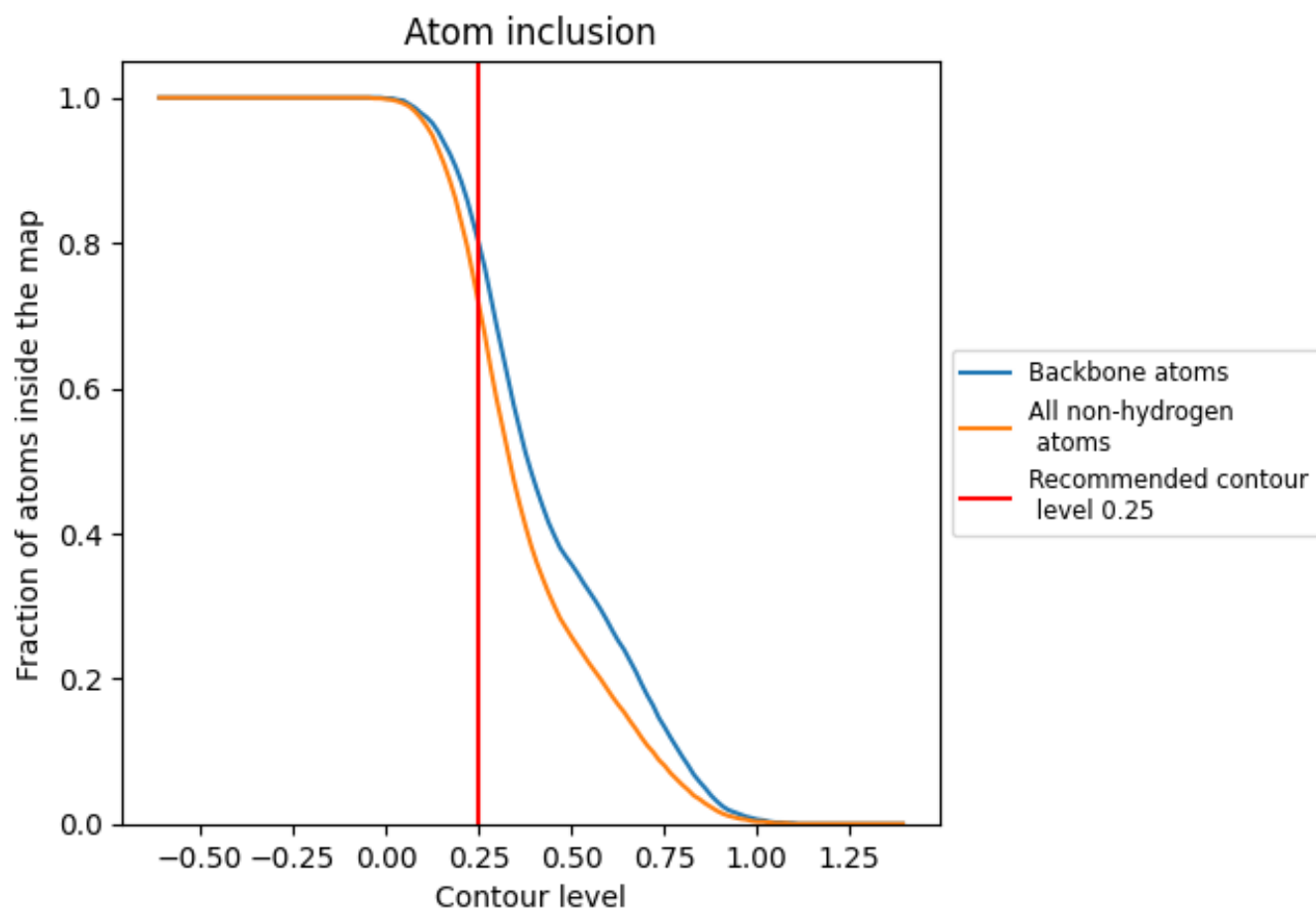
The images above show the model with each residue coloured according to its Q-score. This shows their resolvability in the map with higher Q-score values reflecting better resolvability. Please note: Q-score is calculating the resolvability of atoms, and thus high values are only expected at resolutions at which atoms can be resolved. Low Q-score values may therefore be expected for many entries.

9.3 Atom inclusion mapped to coordinate model [i](#)



The images above show the model with each residue coloured according to its atom inclusion. This shows to what extent they are inside the map at the recommended contour level (0.25).



















9.4 Atom inclusion [i](#)



At the recommended contour level, 80% of all backbone atoms, 72% of all non-hydrogen atoms, are inside the map.

9.5 Map-model fit summary

The table lists the average atom inclusion at the recommended contour level (0.25) and Q-score for the entire model and for each chain.

Chain	Atom inclusion	Q-score
All	 0.7190	 0.3340
A	 0.7550	 0.3050
B	 0.7070	 0.2790
C	 0.6360	 0.2580
D	 0.5090	 0.2420
E	 0.8320	 0.4660
F	 0.8520	 0.4670
G	 0.8840	 0.4650
H	 0.8680	 0.4710

