



Full wwPDB X-ray Structure Validation Report ⓘ

Aug 10, 2020 – 02:00 AM BST

PDB ID : 4P44
Title : X-ray structure of human glutamate carboxypeptidase II (GCPII) in complex with a phosphoramidate inhibitor JRB-4-81
Authors : Novakova, Z.; Barinka, C.
Deposited on : 2014-03-11
Resolution : 1.75 Å(reported)

This is a Full wwPDB X-ray Structure Validation Report for a publicly released PDB entry.

We welcome your comments at validation@mail.wwpdb.org

A user guide is available at

<https://www.wwpdb.org/validation/2017/XrayValidationReportHelp>

with specific help available everywhere you see the ⓘ symbol.

The following versions of software and data (see [references ⓘ](#)) were used in the production of this report:

MolProbity : 4.02b-467
Mogul : 1.8.5 (274361), CSD as541be (2020)
Xtriage (Phenix) : 1.13
EDS : 2.13.1
buster-report : 1.1.7 (2018)
Percentile statistics : 20191225.v01 (using entries in the PDB archive December 25th 2019)
Refmac : 5.8.0158
CCP4 : 7.0.044 (Gargrove)
Ideal geometry (proteins) : Engh & Huber (2001)
Ideal geometry (DNA, RNA) : Parkinson et al. (1996)
Validation Pipeline (wwPDB-VP) : 2.13.1

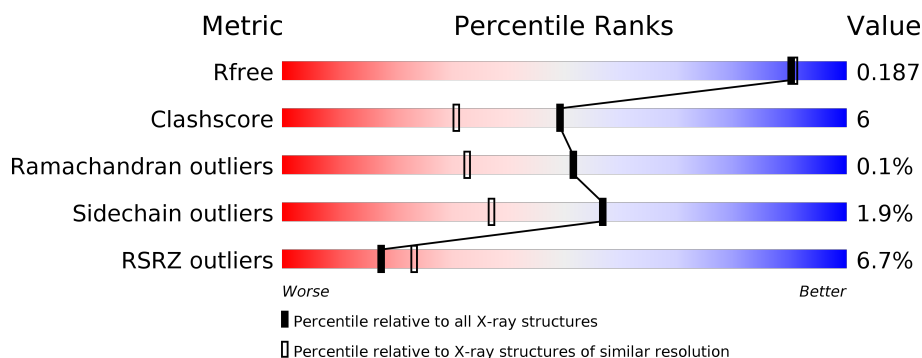
1 Overall quality at a glance i

The following experimental techniques were used to determine the structure:

X-RAY DIFFRACTION

The reported resolution of this entry is 1.75 Å.

Percentile scores (ranging between 0-100) for global validation metrics of the entry are shown in the following graphic. The table shows the number of entries on which the scores are based.



Metric	Whole archive (#Entries)	Similar resolution (#Entries, resolution range(Å))
R _{free}	130704	2340 (1.76-1.76)
Clashscore	141614	2466 (1.76-1.76)
Ramachandran outliers	138981	2437 (1.76-1.76)
Sidechain outliers	138945	2437 (1.76-1.76)
RSRZ outliers	127900	2298 (1.76-1.76)

The table below summarises the geometric issues observed across the polymeric chains and their fit to the electron density. The red, orange, yellow and green segments on the lower bar indicate the fraction of residues that contain outliers for ≥ 3 , 2, 1 and 0 types of geometric quality criteria respectively. A grey segment represents the fraction of residues that are not modelled. The numeric value for each fraction is indicated below the corresponding segment, with a dot representing fractions $\leq 5\%$. The upper red bar (where present) indicates the fraction of residues that have poor fit to the electron density. The numeric value is given above the bar.

Mol	Chain	Length	Quality of chain
1	A	707	
2	B	2	
2	C	2	
2	D	2	
3	E	4	

2 Entry composition i

There are 9 unique types of molecules in this entry. The entry contains 6554 atoms, of which 0 are hydrogens and 0 are deuteriums.

In the tables below, the ZeroOcc column contains the number of atoms modelled with zero occupancy, the AltConf column contains the number of residues with at least one atom in alternate conformation and the Trace column contains the number of residues modelled with at most 2 atoms.

- Molecule 1 is a protein called Glutamate carboxypeptidase 2.

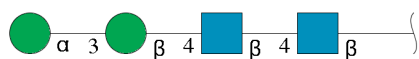
Mol	Chain	Residues	Atoms					ZeroOcc	AltConf	Trace
			Total	C	N	O	S			
1	A	691	5734	3680	963	1069	22	0	43	0

- Molecule 2 is an oligosaccharide called 2-acetamido-2-deoxy-beta-D-glucopyranose-(1-4)-2-acetamido-2-deoxy-beta-D-glucopyranose.



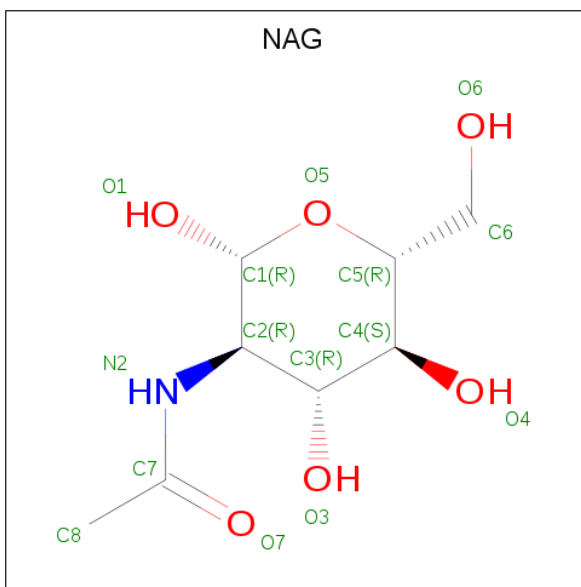
Mol	Chain	Residues	Atoms				ZeroOcc	AltConf	Trace
			Total	C	N	O			
2	B	2	28	16	2	10	0	0	0
2	C	2	28	16	2	10	0	0	0
2	D	2	28	16	2	10	0	0	0

- Molecule 3 is an oligosaccharide called alpha-D-mannopyranose-(1-3)-beta-D-mannopyranose-(1-4)-2-acetamido-2-deoxy-beta-D-glucopyranose-(1-4)-2-acetamido-2-deoxy-beta-D-glucopyranose.



Mol	Chain	Residues	Atoms				ZeroOcc	AltConf	Trace
			Total	C	N	O			
3	E	4	50	28	2	20	0	0	0

- Molecule 4 is 2-acetamido-2-deoxy-beta-D-glucopyranose (three-letter code: NAG) (formula: C₈H₁₅NO₆).



Mol	Chain	Residues	Atoms				ZeroOcc	AltConf
4	A	1	Total	C	N	O	0	0
			14	8	1	5		
4	A	1	Total	C	N	O	0	0
			14	8	1	5		
4	A	1	Total	C	N	O	0	0
			14	8	1	5		

- Molecule 5 is ZINC ION (three-letter code: ZN) (formula: Zn).

Mol	Chain	Residues	Atoms		ZeroOcc	AltConf
5	A	2	Total	Zn	0	0
			2	2		

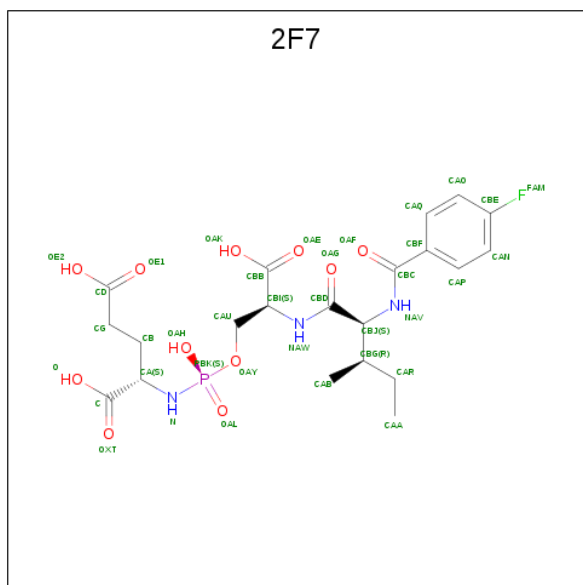
- Molecule 6 is CALCIUM ION (three-letter code: CA) (formula: Ca).

Mol	Chain	Residues	Atoms		ZeroOcc	AltConf
6	A	1	Total	Ca	0	0
			1	1		

- Molecule 7 is CHLORIDE ION (three-letter code: CL) (formula: Cl).

Mol	Chain	Residues	Atoms		ZeroOcc	AltConf
7	A	1	Total	Cl	0	0
			1	1		

- Molecule 8 is N-(4-fluorobenzoyl)-L-alloisoleucyl-O-[(S)-{[(1S)-1,3-dicarboxypropyl]amino}(hydroxy)phosphoryl]-L-serine (three-letter code: 2F7) (formula: C₂₁H₂₉FN₃O₁₁P).



Mol	Chain	Residues	Atoms					ZeroOcc	AltConf	
			Total	C	F	N	O			P
8	A	1	37	21	1	3	11	1	0	0

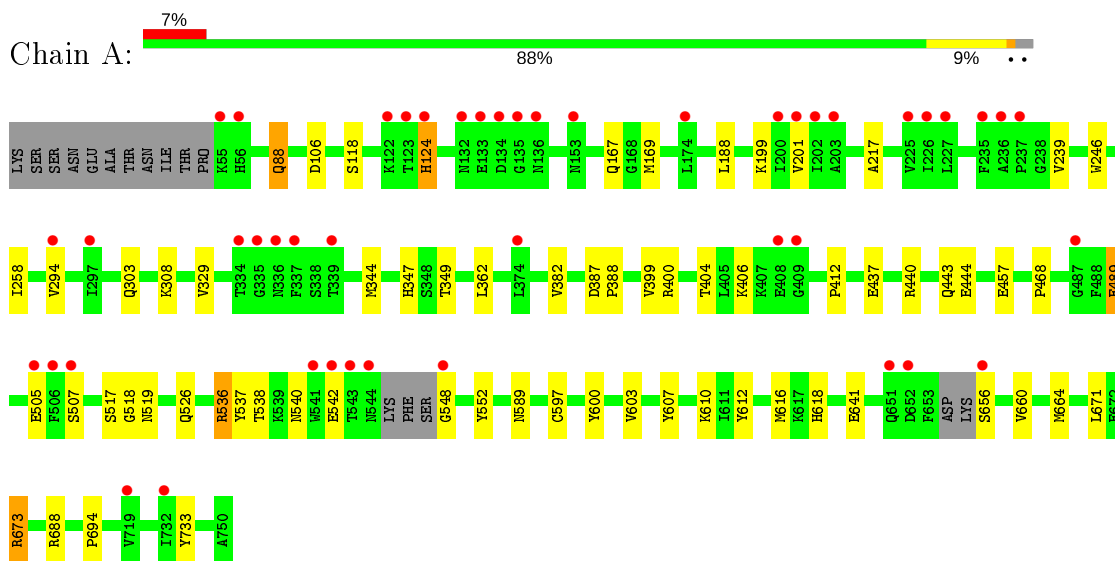
- Molecule 9 is water.

Mol	Chain	Residues	Atoms		ZeroOcc	AltConf
9	A	603	Total	O	0	0
			603	603		

3 Residue-property plots

These plots are drawn for all protein, RNA, DNA and oligosaccharide chains in the entry. The first graphic for a chain summarises the proportions of the various outlier classes displayed in the second graphic. The second graphic shows the sequence view annotated by issues in geometry and electron density. Residues are color-coded according to the number of geometric quality criteria for which they contain at least one outlier: green = 0, yellow = 1, orange = 2 and red = 3 or more. A red dot above a residue indicates a poor fit to the electron density ($RSRZ > 2$). Stretches of 2 or more consecutive residues without any outlier are shown as a green connector. Residues present in the sample, but not in the model, are shown in grey.

- Molecule 1: Glutamate carboxypeptidase 2



- Molecule 2: 2-acetamido-2-deoxy-beta-D-glucopyranose-(1-4)-2-acetamido-2-deoxy-beta-D-glucopyranose



- Molecule 2: 2-acetamido-2-deoxy-beta-D-glucopyranose-(1-4)-2-acetamido-2-deoxy-beta-D-glucopyranose



- Molecule 2: 2-acetamido-2-deoxy-beta-D-glucopyranose-(1-4)-2-acetamido-2-deoxy-beta-D-glucopyranose



MAG1
MAG2

- Molecule 3: alpha-D-mannopyranose-(1-3)-beta-D-mannopyranose-(1-4)-2-acetamido-2-deoxy-beta-D-glucopyranose-(1-4)-2-acetamido-2-deoxy-beta-D-glucopyranose

Chain E:

100%

MAG1
MAG2
BMA3
MAN4

4 Data and refinement statistics

Property	Value	Source
Space group	I 2 2 2	Depositor
Cell constants a, b, c, α , β , γ	101.50Å 130.49Å 158.94Å 90.00° 90.00° 90.00°	Depositor
Resolution (Å)	29.51 – 1.75 29.51 – 1.75	Depositor EDS
% Data completeness (in resolution range)	100.0 (29.51-1.75) 99.9 (29.51-1.75)	Depositor EDS
R_{merge}	0.06	Depositor
R_{sym}	(Not available)	Depositor
$\langle I/\sigma(I) \rangle$ ¹	2.69 (at 1.75Å)	Xtrriage
Refinement program	REFMAC 5.5.0109	Depositor
R, R_{free}	0.163 , 0.187 0.163 , 0.187	Depositor DCC
R_{free} test set	5288 reflections (5.00%)	wwPDB-VP
Wilson B-factor (Å ²)	21.3	Xtrriage
Anisotropy	0.036	Xtrriage
Bulk solvent k_{sol} (e/Å ³), B_{sol} (Å ²)	0.38 , 56.1	EDS
L-test for twinning ²	$\langle L \rangle = 0.49$, $\langle L^2 \rangle = 0.32$	Xtrriage
Estimated twinning fraction	No twinning to report.	Xtrriage
F_o, F_c correlation	0.97	EDS
Total number of atoms	6554	wwPDB-VP
Average B, all atoms (Å ²)	26.0	wwPDB-VP

Xtrriage's analysis on translational NCS is as follows: *The largest off-origin peak in the Patterson function is 4.12% of the height of the origin peak. No significant pseudotranslation is detected.*

¹ Intensities estimated from amplitudes.

² Theoretical values of $\langle |L| \rangle$, $\langle L^2 \rangle$ for acentric reflections are 0.5, 0.333 respectively for untwinned datasets, and 0.375, 0.2 for perfectly twinned datasets.

5 Model quality [i](#)

5.1 Standard geometry [i](#)

Bond lengths and bond angles in the following residue types are not validated in this section: ZN, BMA, 2F7, NAG, CL, CA, MAN

The Z score for a bond length (or angle) is the number of standard deviations the observed value is removed from the expected value. A bond length (or angle) with $|Z| > 5$ is considered an outlier worth inspection. RMSZ is the root-mean-square of all Z scores of the bond lengths (or angles).

Mol	Chain	Bond lengths		Bond angles	
		RMSZ	# $ Z > 5$	RMSZ	# $ Z > 5$
1	A	0.94	1/5972 (0.0%)	0.81	7/8089 (0.1%)

All (1) bond length outliers are listed below:

Mol	Chain	Res	Type	Atoms	Z	Observed(Å)	Ideal(Å)
1	A	399	VAL	CB-CG2	5.16	1.63	1.52

All (7) bond angle outliers are listed below:

Mol	Chain	Res	Type	Atoms	Z	Observed(°)	Ideal(°)
1	A	688[A]	ARG	NE-CZ-NH1	-6.02	117.29	120.30
1	A	688[B]	ARG	NE-CZ-NH1	-6.02	117.29	120.30
1	A	440	ARG	NE-CZ-NH2	-5.81	117.39	120.30
1	A	673	ARG	NE-CZ-NH2	-5.57	117.51	120.30
1	A	673	ARG	NE-CZ-NH1	5.38	122.99	120.30
1	A	536[A]	ARG	NE-CZ-NH2	-5.09	117.75	120.30
1	A	536[B]	ARG	NE-CZ-NH2	-5.09	117.75	120.30

There are no chirality outliers.

There are no planarity outliers.

5.2 Too-close contacts [i](#)

In the following table, the Non-H and H(model) columns list the number of non-hydrogen atoms and hydrogen atoms in the chain respectively. The H(added) column lists the number of hydrogen atoms added and optimized by MolProbity. The Clashes column lists the number of clashes within the asymmetric unit, whereas Symm-Clashes lists symmetry related clashes.

Mol	Chain	Non-H	H(model)	H(added)	Clashes	Symm-Clashes
1	A	5734	0	5586	58	0
2	B	28	0	25	1	0
2	C	28	0	25	0	0
2	D	28	0	25	2	0
3	E	50	0	43	0	0
4	A	42	0	39	2	0
5	A	2	0	0	0	0
6	A	1	0	0	0	0
7	A	1	0	0	0	0
8	A	37	0	24	12	0
9	A	603	0	0	16	0
All	All	6554	0	5767	69	0

The all-atom clashscore is defined as the number of clashes found per 1000 atoms (including hydrogen atoms). The all-atom clashscore for this structure is 6.

All (69) close contacts within the same asymmetric unit are listed below, sorted by their clash magnitude.

Atom-1	Atom-2	Interatomic distance (Å)	Clash overlap (Å)
1:A:660[A]:VAL:O	1:A:664[A]:MET:HG2	1.29	1.28
1:A:597[B]:CYS:SG	1:A:671:LEU:HD22	2.12	0.90
1:A:536[A]:ARG:HH12	8:A:818:2F7:H19	1.36	0.89
1:A:597[B]:CYS:SG	1:A:671:LEU:CD2	2.60	0.88
1:A:733:TYR:HE2	9:A:989:HOH:O	1.60	0.83
1:A:656[B]:SER:O	9:A:901:HOH:O	1.97	0.81
1:A:88:GLN:HE21	1:A:88:GLN:H	1.29	0.81
1:A:641:GLU:HG3	9:A:1322:HOH:O	1.82	0.79
8:A:818:2F7:H23	8:A:818:2F7:H25	1.49	0.78
1:A:536[A]:ARG:NH1	8:A:818:2F7:H19	2.00	0.75
1:A:457:GLU:OE2	1:A:536[A]:ARG:NH2	2.21	0.72
1:A:612:TYR:CZ	1:A:616:MET:HG3	2.25	0.71
8:A:818:2F7:OAG	8:A:818:2F7:OAK	2.09	0.71
1:A:457:GLU:CD	1:A:536[A]:ARG:NH2	2.46	0.69
8:A:818:2F7:H23	8:A:818:2F7:NAV	2.07	0.68
8:A:818:2F7:H23	8:A:818:2F7:H26	1.75	0.67
1:A:603[A]:VAL:HG13	1:A:607:TYR:CZ	2.30	0.67
1:A:437:GLU:OE1	9:A:902:HOH:O	2.12	0.66
1:A:88:GLN:NE2	1:A:88:GLN:H	1.97	0.63
1:A:400:ARG:O	1:A:404[B]:THR:HG23	1.99	0.62
1:A:412:PRO:HA	1:A:589:ASN:HD21	1.63	0.62
9:A:1212:HOH:O	2:B:2:NAG:H81	1.99	0.61
1:A:457:GLU:HG2	1:A:536[A]:ARG:CZ	2.33	0.59

Continued on next page...

Continued from previous page...

Atom-1	Atom-2	Interatomic distance (Å)	Clash overlap (Å)
1:A:597[B]:CYS:SG	1:A:671:LEU:HD23	2.44	0.58
9:A:1184:HOH:O	2:D:2:NAG:C8	2.52	0.56
1:A:603[A]:VAL:CG1	1:A:607:TYR:CE2	2.88	0.56
1:A:656[B]:SER:CB	9:A:901:HOH:O	2.53	0.55
1:A:536[A]:ARG:NH1	8:A:818:2F7:CAB	2.69	0.55
1:A:468:PRO:HG2	1:A:603[B]:VAL:HG21	1.90	0.54
1:A:517:SER:HB2	1:A:694:PRO:HG3	1.90	0.53
9:A:1184:HOH:O	2:D:2:NAG:H83	2.08	0.53
1:A:597[B]:CYS:HG	1:A:671:LEU:HD22	1.74	0.53
1:A:362:LEU:CD1	1:A:406:LYS:HD2	2.40	0.52
1:A:258:ILE:HD13	1:A:294:VAL:HB	1.90	0.52
1:A:603[A]:VAL:HG13	1:A:607:TYR:CE2	2.47	0.48
1:A:124:HIS:CE1	1:A:347:HIS:CE1	3.01	0.48
8:A:818:2F7:CBB	8:A:818:2F7:OAG	2.62	0.48
1:A:188:LEU:CD2	1:A:329[A]:VAL:HG11	2.42	0.48
1:A:603[A]:VAL:CG1	1:A:607:TYR:CZ	2.97	0.48
1:A:167:GLN:NE2	1:A:349[A]:THR:HG22	2.29	0.48
1:A:540:ASN:OD1	1:A:542:GLU:HG2	2.15	0.47
1:A:457:GLU:OE2	1:A:538:THR:OG1	2.23	0.47
1:A:308:LYS:HB2	9:A:1281:HOH:O	2.15	0.47
1:A:468:PRO:CG	1:A:603[B]:VAL:HG21	2.44	0.46
1:A:489:GLU:CD	1:A:489:GLU:H	2.19	0.46
8:A:818:2F7:H26	8:A:818:2F7:H25	1.16	0.45
1:A:443[A]:GLN:HG3	1:A:444:GLU:CD	2.37	0.45
1:A:618:HIS:HE1	9:A:1132:HOH:O	2.00	0.45
1:A:526[A]:GLN:NE2	9:A:1467:HOH:O	2.46	0.45
4:A:803:NAG:H83	9:A:1183:HOH:O	2.17	0.45
8:A:818:2F7:OAK	8:A:818:2F7:CBD	2.65	0.44
1:A:199:LYS:NZ	9:A:1219:HOH:O	2.49	0.44
1:A:610:LYS:NZ	9:A:1489:HOH:O	2.50	0.44
1:A:733:TYR:CE2	9:A:989:HOH:O	2.47	0.44
1:A:548:GLY:HA3	8:A:818:2F7:H21	1.99	0.43
1:A:517:SER:OG	1:A:518:GLY:N	2.51	0.43
1:A:201[A]:VAL:HG21	1:A:217:ALA:HB1	2.00	0.43
1:A:552:TYR:CG	8:A:818:2F7:H24	2.53	0.43
1:A:457:GLU:CD	1:A:536[A]:ARG:HH22	2.22	0.43
1:A:457:GLU:CG	1:A:536[A]:ARG:CZ	2.96	0.43
1:A:246:TRP:CD1	4:A:807:NAG:H83	2.54	0.43
1:A:188:LEU:HD21	1:A:329[A]:VAL:HG11	2.00	0.42
1:A:347:HIS:HE1	9:A:1283:HOH:O	2.03	0.42
1:A:457:GLU:CD	1:A:536[A]:ARG:CZ	2.87	0.41

Continued on next page...

Continued from previous page...

Atom-1	Atom-2	Interatomic distance (Å)	Clash overlap (Å)
1:A:258:ILE:HD13	1:A:294:VAL:CB	2.51	0.41
1:A:169:MET:HA	1:A:344:MET:O	2.21	0.41
1:A:106:ASP:OD1	1:A:406:LYS:HE3	2.21	0.41
1:A:118:SER:HA	1:A:349[B]:THR:O	2.21	0.40
1:A:387:ASP:HA	1:A:388:PRO:HA	1.90	0.40

There are no symmetry-related clashes.

5.3 Torsion angles [i](#)

5.3.1 Protein backbone [i](#)

In the following table, the Percentiles column shows the percent Ramachandran outliers of the chain as a percentile score with respect to all X-ray entries followed by that with respect to entries of similar resolution.

The Analysed column shows the number of residues for which the backbone conformation was analysed, and the total number of residues.

Mol	Chain	Analysed	Favoured	Allowed	Outliers	Percentiles
1	A	725/707 (102%)	710 (98%)	14 (2%)	1 (0%)	51 33

All (1) Ramachandran outliers are listed below:

Mol	Chain	Res	Type
1	A	382	VAL

5.3.2 Protein sidechains [i](#)

In the following table, the Percentiles column shows the percent sidechain outliers of the chain as a percentile score with respect to all X-ray entries followed by that with respect to entries of similar resolution.

The Analysed column shows the number of residues for which the sidechain conformation was analysed, and the total number of residues.

Mol	Chain	Analysed	Rotameric	Outliers	Percentiles
1	A	629/603 (104%)	617 (98%)	12 (2%)	57 37

All (12) residues with a non-rotameric sidechain are listed below:

Mol	Chain	Res	Type
1	A	88	GLN
1	A	124	HIS
1	A	239[A]	VAL
1	A	239[B]	VAL
1	A	303	GLN
1	A	489	GLU
1	A	505	GLU
1	A	507	SER
1	A	519	ASN
1	A	537	TYR
1	A	600	TYR
1	A	673	ARG

Some sidechains can be flipped to improve hydrogen bonding and reduce clashes. All (8) such sidechains are listed below:

Mol	Chain	Res	Type
1	A	88	GLN
1	A	167	GLN
1	A	303	GLN
1	A	347	HIS
1	A	544	ASN
1	A	589	ASN
1	A	618	HIS
1	A	651	GLN

5.3.3 RNA [i](#)

There are no RNA molecules in this entry.

5.4 Non-standard residues in protein, DNA, RNA chains [i](#)

12 non-standard protein/DNA/RNA residues are modelled in this entry.

In the following table, the Counts columns list the number of bonds (or angles) for which Mogul statistics could be retrieved, the number of bonds (or angles) that are observed in the model and the number of bonds (or angles) that are defined in the Chemical Component Dictionary. The Link column lists molecule types, if any, to which the group is linked. The Z score for a bond length (or angle) is the number of standard deviations the observed value is removed from the expected value. A bond length (or angle) with $|Z| > 2$ is considered an outlier worth inspection. RMSZ is the root-mean-square of all Z scores of the bond lengths (or angles).

Mol	Type	Chain	Res	Link	Bond lengths			Bond angles		
					Counts	RMSZ	# Z > 2	Counts	RMSZ	# Z > 2
3	MAN	E	4	3	11,11,12	0.59	0	15,15,17	1.25	1 (6%)
4	NAG	A	807	1	14,14,15	0.73	0	17,19,21	1.50	2 (11%)
2	NAG	B	2	2	14,14,15	0.62	0	17,19,21	1.36	1 (5%)
2	NAG	D	1	1,2	14,14,15	0.90	1 (7%)	17,19,21	0.96	0
2	NAG	C	1	1,2	14,14,15	0.74	0	17,19,21	0.99	0
3	NAG	E	1	1,3	14,14,15	0.72	0	17,19,21	1.53	3 (17%)
2	NAG	D	2	2	14,14,15	0.57	0	17,19,21	1.36	1 (5%)
2	NAG	B	1	1,2	14,14,15	0.55	0	17,19,21	1.03	1 (5%)
3	NAG	E	2	3	14,14,15	0.71	0	17,19,21	1.24	1 (5%)
2	NAG	C	2	2	14,14,15	0.50	0	17,19,21	1.08	2 (11%)
4	NAG	A	806	1	14,14,15	0.49	0	17,19,21	2.54	5 (29%)
4	NAG	A	803	1	14,14,15	0.73	0	17,19,21	1.93	4 (23%)

In the following table, the Chirals column lists the number of chiral outliers, the number of chiral centers analysed, the number of these observed in the model and the number defined in the Chemical Component Dictionary. Similar counts are reported in the Torsion and Rings columns. '-' means no outliers of that kind were identified.

Mol	Type	Chain	Res	Link	Chirals	Torsions	Rings
3	MAN	E	4	3	-	0/2/19/22	0/1/1/1
4	NAG	A	807	1	-	0/6/23/26	0/1/1/1
2	NAG	B	2	2	-	2/6/23/26	0/1/1/1
2	NAG	D	1	1,2	-	2/6/23/26	0/1/1/1
2	NAG	C	1	1,2	-	0/6/23/26	0/1/1/1
3	NAG	E	1	1,3	-	0/6/23/26	0/1/1/1
2	NAG	D	2	2	-	2/6/23/26	0/1/1/1
2	NAG	B	1	1,2	-	0/6/23/26	0/1/1/1
3	NAG	E	2	3	-	2/6/23/26	0/1/1/1
2	NAG	C	2	2	-	2/6/23/26	0/1/1/1
4	NAG	A	806	1	-	2/6/23/26	0/1/1/1
4	NAG	A	803	1	-	4/6/23/26	0/1/1/1

All (1) bond length outliers are listed below:

Mol	Chain	Res	Type	Atoms	Z	Observed(Å)	Ideal(Å)
2	D	1	NAG	O7-C7	2.13	1.28	1.23

All (21) bond angle outliers are listed below:

Mol	Chain	Res	Type	Atoms	Z	Observed(°)	Ideal(°)
4	A	806	NAG	C1-O5-C5	9.12	124.55	112.19
4	A	803	NAG	C1-O5-C5	5.60	119.77	112.19
4	A	807	NAG	C1-O5-C5	4.08	117.72	112.19
3	E	1	NAG	O5-C1-C2	-3.98	105.01	111.29
3	E	4	MAN	O5-C5-C6	3.59	112.83	107.20
2	B	2	NAG	C2-N2-C7	3.54	127.95	122.90
2	D	2	NAG	C8-C7-N2	3.30	121.69	116.10
3	E	2	NAG	C3-C4-C5	-2.78	105.28	110.24
3	E	1	NAG	O5-C5-C6	2.59	111.26	107.20
2	C	2	NAG	O4-C4-C5	2.57	115.67	109.30
3	E	1	NAG	C1-O5-C5	2.52	115.61	112.19
2	B	1	NAG	O5-C5-C6	2.50	111.12	107.20
4	A	803	NAG	C2-N2-C7	-2.48	119.38	122.90
4	A	807	NAG	O3-C3-C4	-2.26	105.12	110.35
4	A	806	NAG	C4-C3-C2	-2.26	107.71	111.02
4	A	806	NAG	C6-C5-C4	-2.20	107.84	113.00
4	A	806	NAG	O5-C1-C2	2.17	114.72	111.29
4	A	803	NAG	O5-C5-C4	2.12	115.98	110.83
4	A	806	NAG	C1-C2-N2	2.09	114.06	110.49
2	C	2	NAG	O5-C5-C6	2.09	110.48	107.20
4	A	803	NAG	C3-C4-C5	2.04	113.88	110.24

There are no chirality outliers.

All (16) torsion outliers are listed below:

Mol	Chain	Res	Type	Atoms
4	A	806	NAG	C4-C5-C6-O6
4	A	806	NAG	O5-C5-C6-O6
4	A	803	NAG	C4-C5-C6-O6
2	B	2	NAG	C8-C7-N2-C2
2	B	2	NAG	O7-C7-N2-C2
2	D	1	NAG	C8-C7-N2-C2
2	D	1	NAG	O7-C7-N2-C2
2	D	2	NAG	C8-C7-N2-C2
2	D	2	NAG	O7-C7-N2-C2
3	E	2	NAG	C8-C7-N2-C2
3	E	2	NAG	O7-C7-N2-C2
4	A	803	NAG	C8-C7-N2-C2
4	A	803	NAG	O7-C7-N2-C2
4	A	803	NAG	O5-C5-C6-O6
2	C	2	NAG	C4-C5-C6-O6
2	C	2	NAG	O5-C5-C6-O6

There are no ring outliers.

4 monomers are involved in 5 short contacts:

Mol	Chain	Res	Type	Clashes	Symm-Clashes
4	A	807	NAG	1	0
2	B	2	NAG	1	0
2	D	2	NAG	2	0
4	A	803	NAG	1	0

5.5 Carbohydrates [i](#)

10 monosaccharides are modelled in this entry.

In the following table, the Counts columns list the number of bonds (or angles) for which Mogul statistics could be retrieved, the number of bonds (or angles) that are observed in the model and the number of bonds (or angles) that are defined in the Chemical Component Dictionary. The Link column lists molecule types, if any, to which the group is linked. The Z score for a bond length (or angle) is the number of standard deviations the observed value is removed from the expected value. A bond length (or angle) with $|Z| > 2$ is considered an outlier worth inspection. RMSZ is the root-mean-square of all Z scores of the bond lengths (or angles).

Mol	Type	Chain	Res	Link	Bond lengths			Bond angles		
					Counts	RMSZ	# $ Z > 2$	Counts	RMSZ	# $ Z > 2$
2	NAG	B	1	1,2	14,14,15	0.55	0	17,19,21	1.03	1 (5%)
2	NAG	B	2	2	14,14,15	0.62	0	17,19,21	1.36	1 (5%)
2	NAG	C	1	1,2	14,14,15	0.74	0	17,19,21	0.99	0
2	NAG	C	2	2	14,14,15	0.50	0	17,19,21	1.08	2 (11%)
2	NAG	D	1	1,2	14,14,15	0.90	1 (7%)	17,19,21	0.96	0
2	NAG	D	2	2	14,14,15	0.57	0	17,19,21	1.36	1 (5%)
3	NAG	E	1	1,3	14,14,15	0.72	0	17,19,21	1.53	3 (17%)
3	NAG	E	2	3	14,14,15	0.71	0	17,19,21	1.24	1 (5%)
3	BMA	E	3	3	11,11,12	0.68	0	15,15,17	1.09	2 (13%)
3	MAN	E	4	3	11,11,12	0.59	0	15,15,17	1.25	1 (6%)

In the following table, the Chirals column lists the number of chiral outliers, the number of chiral centers analysed, the number of these observed in the model and the number defined in the Chemical Component Dictionary. Similar counts are reported in the Torsion and Rings columns. '-' means no outliers of that kind were identified.

Mol	Type	Chain	Res	Link	Chirals	Torsions	Rings
2	NAG	B	1	1,2	-	0/6/23/26	0/1/1/1
2	NAG	B	2	2	-	2/6/23/26	0/1/1/1

Continued on next page...

Continued from previous page...

Mol	Type	Chain	Res	Link	Chirals	Torsions	Rings
2	NAG	C	1	1,2	-	0/6/23/26	0/1/1/1
2	NAG	C	2	2	-	2/6/23/26	0/1/1/1
2	NAG	D	1	1,2	-	2/6/23/26	0/1/1/1
2	NAG	D	2	2	-	2/6/23/26	0/1/1/1
3	NAG	E	1	1,3	-	0/6/23/26	0/1/1/1
3	NAG	E	2	3	-	2/6/23/26	0/1/1/1
3	BMA	E	3	3	-	0/2/19/22	0/1/1/1
3	MAN	E	4	3	-	0/2/19/22	0/1/1/1

All (1) bond length outliers are listed below:

Mol	Chain	Res	Type	Atoms	Z	Observed(Å)	Ideal(Å)
2	D	1	NAG	O7-C7	2.13	1.28	1.23

All (12) bond angle outliers are listed below:

Mol	Chain	Res	Type	Atoms	Z	Observed(°)	Ideal(°)
3	E	1	NAG	O5-C1-C2	-3.98	105.01	111.29
3	E	4	MAN	O5-C5-C6	3.59	112.83	107.20
2	B	2	NAG	C2-N2-C7	3.54	127.95	122.90
2	D	2	NAG	C8-C7-N2	3.30	121.69	116.10
3	E	2	NAG	C3-C4-C5	-2.78	105.28	110.24
3	E	1	NAG	O5-C5-C6	2.59	111.26	107.20
2	C	2	NAG	O4-C4-C5	2.57	115.67	109.30
3	E	1	NAG	C1-O5-C5	2.52	115.61	112.19
2	B	1	NAG	O5-C5-C6	2.50	111.12	107.20
2	C	2	NAG	O5-C5-C6	2.09	110.48	107.20
3	E	3	BMA	C1-C2-C3	2.05	112.19	109.67
3	E	3	BMA	O3-C3-C2	-2.03	106.12	109.99

There are no chirality outliers.

All (10) torsion outliers are listed below:

Mol	Chain	Res	Type	Atoms
2	B	2	NAG	C8-C7-N2-C2
2	B	2	NAG	O7-C7-N2-C2
2	D	1	NAG	C8-C7-N2-C2
2	D	1	NAG	O7-C7-N2-C2
2	D	2	NAG	C8-C7-N2-C2
2	D	2	NAG	O7-C7-N2-C2

Continued on next page...

Continued from previous page...

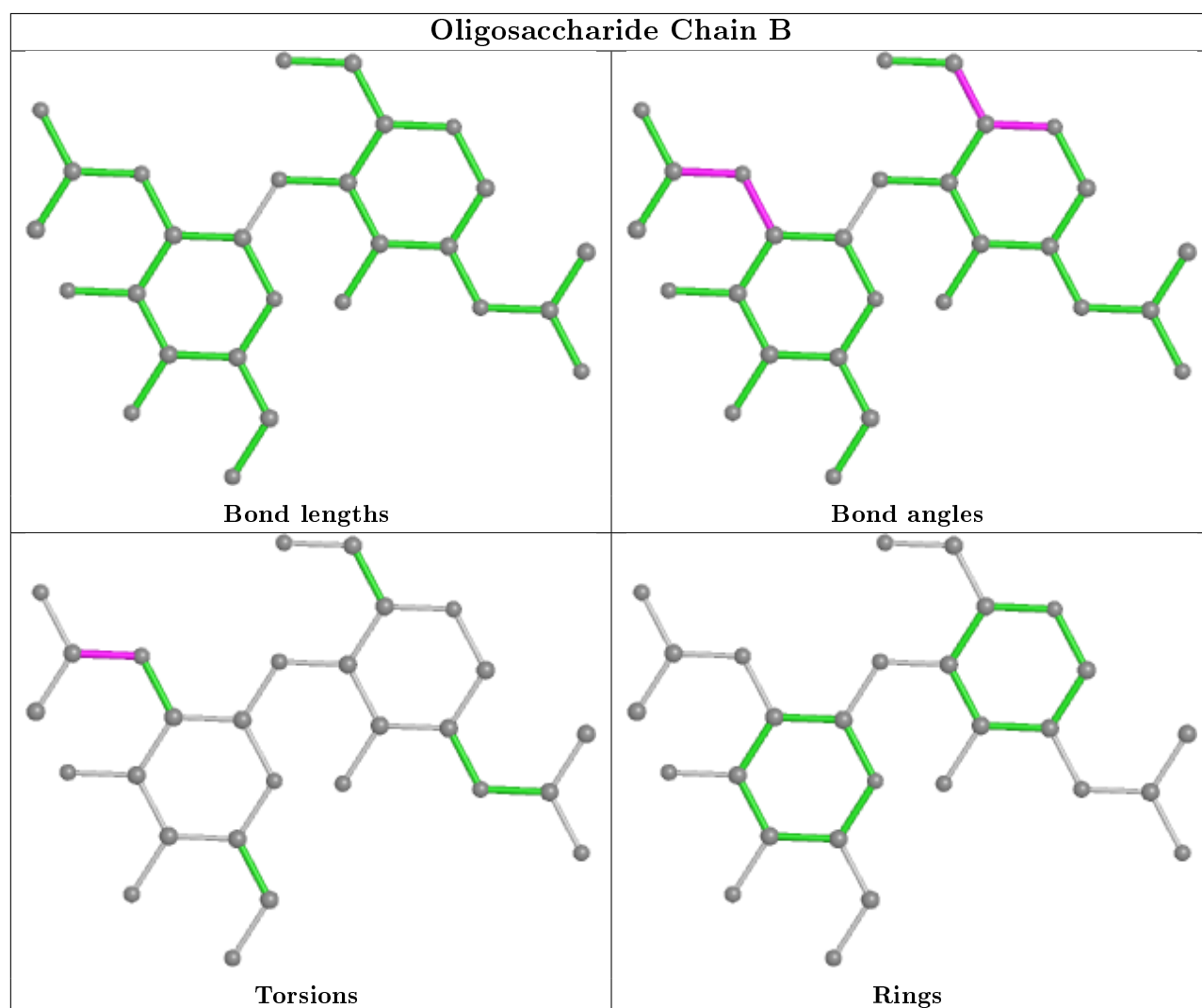
Mol	Chain	Res	Type	Atoms
3	E	2	NAG	C8-C7-N2-C2
3	E	2	NAG	O7-C7-N2-C2
2	C	2	NAG	C4-C5-C6-O6
2	C	2	NAG	O5-C5-C6-O6

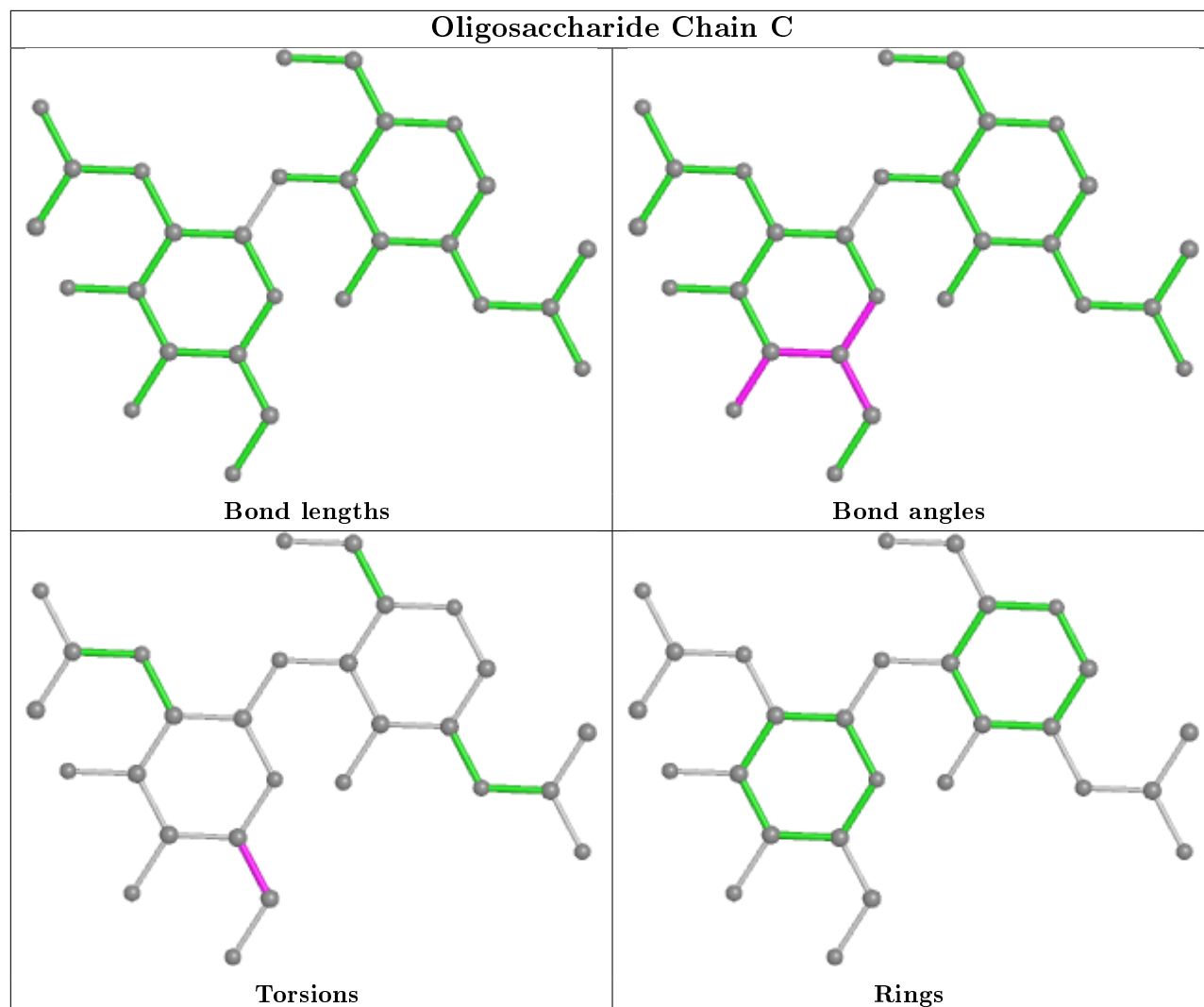
There are no ring outliers.

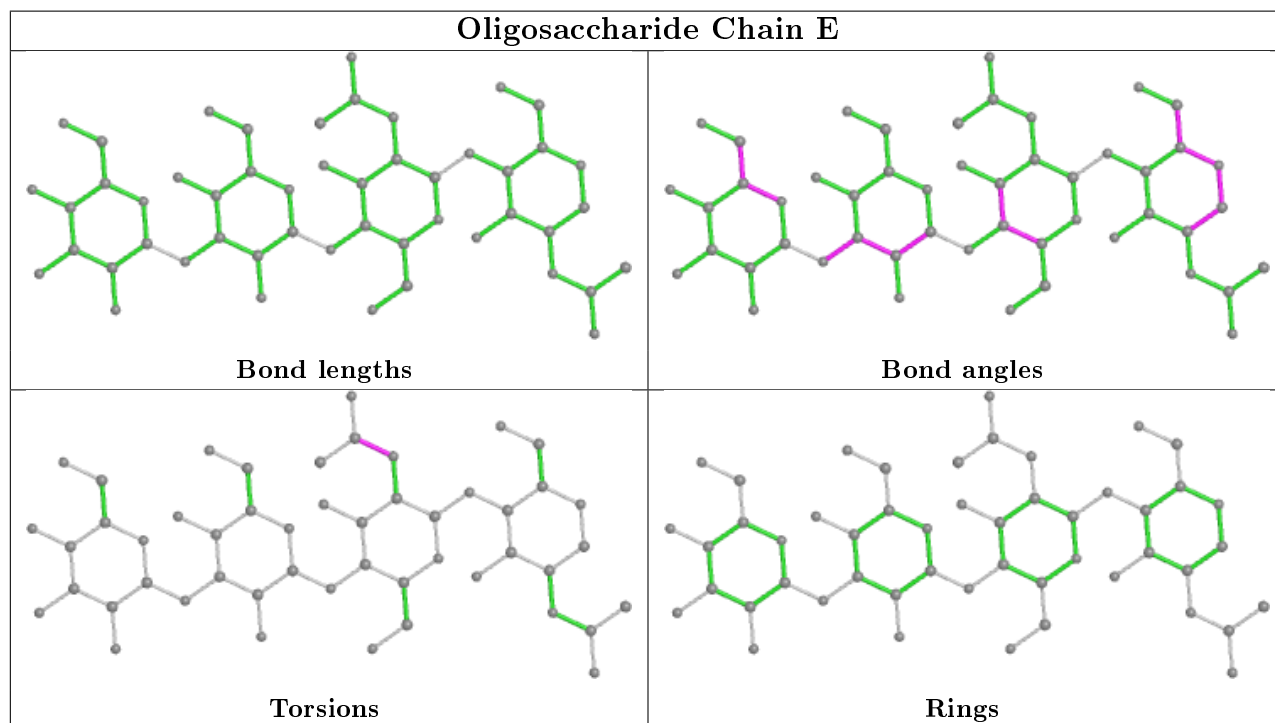
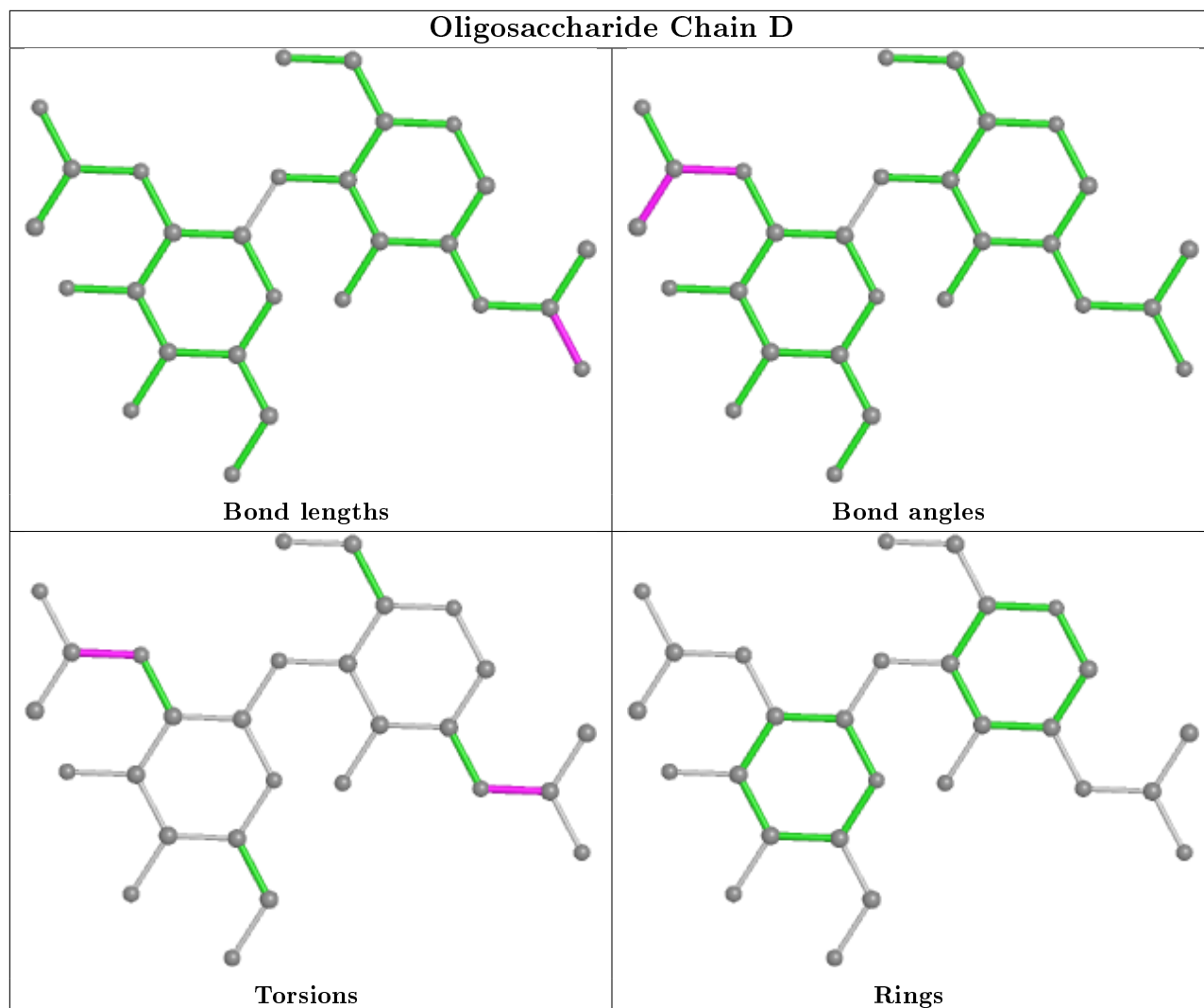
2 monomers are involved in 3 short contacts:

Mol	Chain	Res	Type	Clashes	Symm-Clashes
2	B	2	NAG	1	0
2	D	2	NAG	2	0

The following is a two-dimensional graphical depiction of Mogul quality analysis of bond lengths, bond angles, torsion angles, and ring geometry for oligosaccharide.







5.6 Ligand geometry

Of 8 ligands modelled in this entry, 4 are monoatomic - leaving 4 for Mogul analysis.

In the following table, the Counts columns list the number of bonds (or angles) for which Mogul statistics could be retrieved, the number of bonds (or angles) that are observed in the model and the number of bonds (or angles) that are defined in the Chemical Component Dictionary. The Link column lists molecule types, if any, to which the group is linked. The Z score for a bond length (or angle) is the number of standard deviations the observed value is removed from the expected value. A bond length (or angle) with $|Z| > 2$ is considered an outlier worth inspection. RMSZ is the root-mean-square of all Z scores of the bond lengths (or angles).

Mol	Type	Chain	Res	Link	Bond lengths			Bond angles		
					Counts	RMSZ	# Z > 2	Counts	RMSZ	# Z > 2
4	NAG	A	807	1	14,14,15	0.73	0	17,19,21	1.50	2 (11%)
8	2F7	A	818	5	26,37,37	3.07	8 (30%)	37,51,51	2.93	15 (40%)
4	NAG	A	803	1	14,14,15	0.73	0	17,19,21	1.93	4 (23%)
4	NAG	A	806	1	14,14,15	0.49	0	17,19,21	2.54	5 (29%)

In the following table, the Chirals column lists the number of chiral outliers, the number of chiral centers analysed, the number of these observed in the model and the number defined in the Chemical Component Dictionary. Similar counts are reported in the Torsion and Rings columns. '-' means no outliers of that kind were identified.

Mol	Type	Chain	Res	Link	Chirals	Torsions	Rings
4	NAG	A	807	1	-	0/6/23/26	0/1/1/1
8	2F7	A	818	5	-	10/35/46/46	0/1/1/1
4	NAG	A	803	1	-	4/6/23/26	0/1/1/1
4	NAG	A	806	1	-	2/6/23/26	0/1/1/1

All (8) bond length outliers are listed below:

Mol	Chain	Res	Type	Atoms	Z	Observed(Å)	Ideal(Å)
8	A	818	2F7	PBK-OAL	9.41	1.61	1.46
8	A	818	2F7	PBK-N	7.75	1.70	1.61
8	A	818	2F7	PBK-OAH	-4.90	1.43	1.56
8	A	818	2F7	CBF-CBC	-4.35	1.41	1.50
8	A	818	2F7	CBI-NAW	-3.23	1.42	1.46
8	A	818	2F7	FAM-CBE	-3.06	1.28	1.36
8	A	818	2F7	CB-CA	2.89	1.57	1.53
8	A	818	2F7	CAO-CBE	2.14	1.41	1.37

All (26) bond angle outliers are listed below:

Mol	Chain	Res	Type	Atoms	Z	Observed(°)	Ideal(°)
4	A	806	NAG	C1-O5-C5	9.12	124.55	112.19
8	A	818	2F7	CBJ-NAV-CBC	8.32	136.57	121.52
8	A	818	2F7	CBG-CBJ-NAV	6.05	123.99	111.34
8	A	818	2F7	CBJ-CBD-NAW	-6.02	103.49	116.48
8	A	818	2F7	CAU-CBI-NAW	-5.61	98.17	111.25
4	A	803	NAG	C1-O5-C5	5.60	119.77	112.19
8	A	818	2F7	CBF-CBC-NAV	-5.20	107.10	117.06
4	A	807	NAG	C1-O5-C5	4.08	117.72	112.19
8	A	818	2F7	CBG-CBJ-CBD	3.76	118.67	111.62
8	A	818	2F7	OAG-CBD-CBJ	3.41	127.80	120.74
8	A	818	2F7	OAF-CBC-NAV	3.35	128.61	122.45
8	A	818	2F7	OAL-PBK-N	-3.33	107.32	113.04
8	A	818	2F7	OAG-CBD-NAW	2.89	128.28	122.93
8	A	818	2F7	CBI-NAW-CBD	2.78	127.36	123.19
8	A	818	2F7	CAO-CAQ-CBF	-2.67	117.67	120.78
4	A	803	NAG	C2-N2-C7	-2.48	119.38	122.90
8	A	818	2F7	CAQ-CAO-CBE	2.31	120.75	118.36
4	A	807	NAG	O3-C3-C4	-2.26	105.12	110.35
4	A	806	NAG	C4-C3-C2	-2.26	107.71	111.02
4	A	806	NAG	C6-C5-C4	-2.20	107.84	113.00
4	A	806	NAG	O5-C1-C2	2.17	114.72	111.29
4	A	803	NAG	O5-C5-C4	2.12	115.98	110.83
4	A	806	NAG	C1-C2-N2	2.09	114.06	110.49
8	A	818	2F7	FAM-CBE-CAO	2.08	122.07	118.54
4	A	803	NAG	C3-C4-C5	2.04	113.88	110.24
8	A	818	2F7	CAP-CBF-CBC	-2.02	114.09	120.62

There are no chirality outliers.

All (16) torsion outliers are listed below:

Mol	Chain	Res	Type	Atoms
8	A	818	2F7	CAU-OAY-PBK-OAH
8	A	818	2F7	OAY-CAU-CBI-CBB
8	A	818	2F7	CBB-CBI-NAW-CBD
8	A	818	2F7	CAB-CBG-CBJ-NAV
4	A	806	NAG	C4-C5-C6-O6
4	A	806	NAG	O5-C5-C6-O6
8	A	818	2F7	CAR-CBG-CBJ-NAV
4	A	803	NAG	C4-C5-C6-O6
4	A	803	NAG	C8-C7-N2-C2
4	A	803	NAG	O7-C7-N2-C2
4	A	803	NAG	O5-C5-C6-O6
8	A	818	2F7	NAW-CBD-CBJ-NAV

Continued on next page...

Continued from previous page...

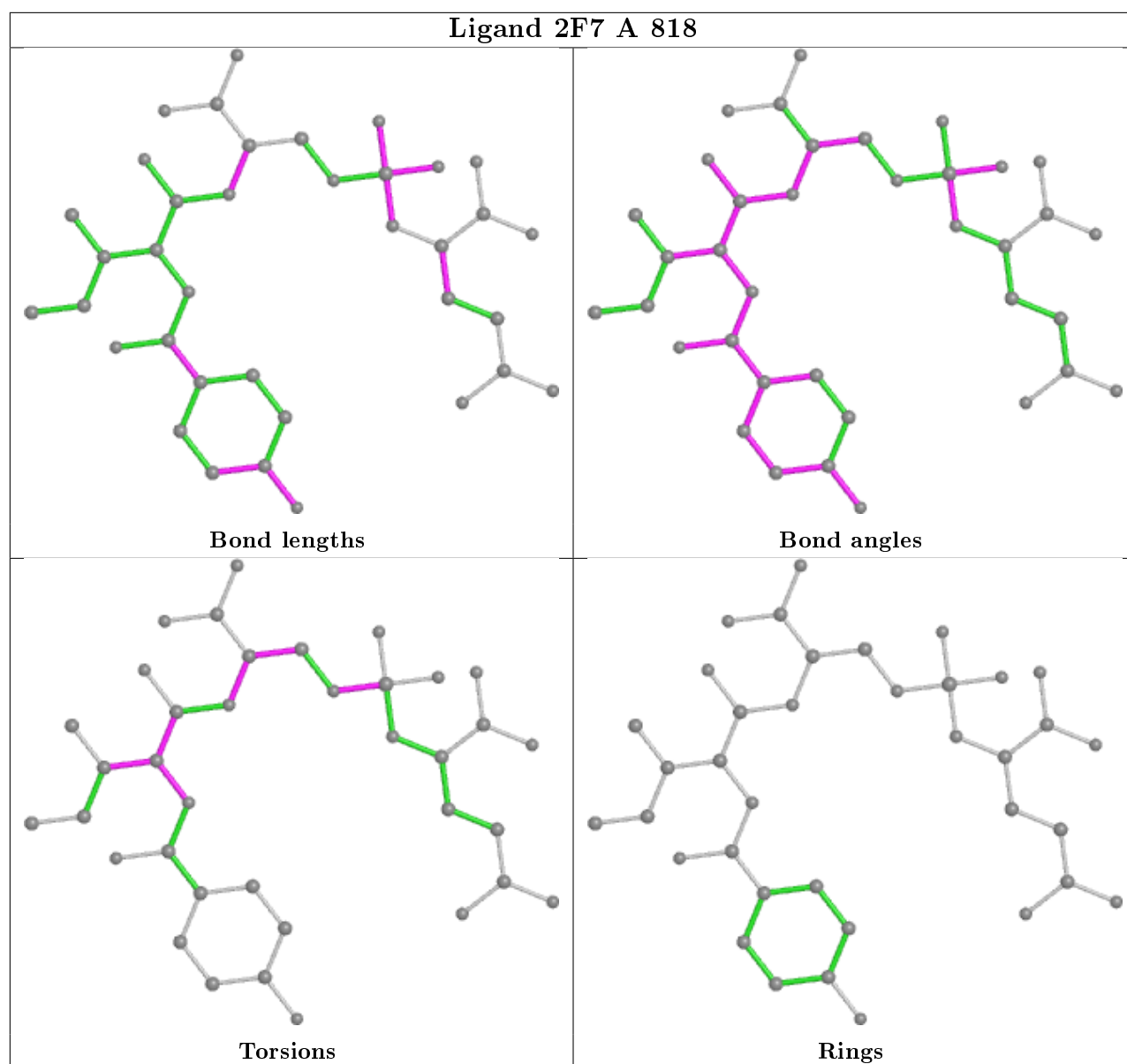
Mol	Chain	Res	Type	Atoms
8	A	818	2F7	CBD-CBJ-NAV-CBC
8	A	818	2F7	OAG-CBD-CBJ-NAV
8	A	818	2F7	CAU-OAY-PBK-N
8	A	818	2F7	OAG-CBD-CBJ-CBG

There are no ring outliers.

3 monomers are involved in 14 short contacts:

Mol	Chain	Res	Type	Clashes	Symm-Clashes
4	A	807	NAG	1	0
8	A	818	2F7	12	0
4	A	803	NAG	1	0

The following is a two-dimensional graphical depiction of Mogul quality analysis of bond lengths, bond angles, torsion angles, and ring geometry for all instances of the Ligand of Interest. In addition, ligands with molecular weight > 250 and outliers as shown on the validation Tables will also be included. For torsion angles, if less than 5% of the Mogul distribution of torsion angles is within 10 degrees of the torsion angle in question, then that torsion angle is considered an outlier. Any bond that is central to one or more torsion angles identified as an outlier by Mogul will be highlighted in the graph. For rings, the root-mean-square deviation (RMSD) between the ring in question and similar rings identified by Mogul is calculated over all ring torsion angles. If the average RMSD is greater than 60 degrees and the minimal RMSD between the ring in question and any Mogul-identified rings is also greater than 60 degrees, then that ring is considered an outlier. The outliers are highlighted in purple. The color gray indicates Mogul did not find sufficient equivalents in the CSD to analyse the geometry.



5.7 Other polymers [i](#)

There are no such residues in this entry.

5.8 Polymer linkage issues [i](#)

There are no chain breaks in this entry.

6 Fit of model and data

6.1 Protein, DNA and RNA chains

In the following table, the column labelled ‘#RSRZ> 2’ contains the number (and percentage) of RSRZ outliers, followed by percent RSRZ outliers for the chain as percentile scores relative to all X-ray entries and entries of similar resolution. The OWAB column contains the minimum, median, 95th percentile and maximum values of the occupancy-weighted average B-factor per residue. The column labelled ‘Q< 0.9’ lists the number of (and percentage) of residues with an average occupancy less than 0.9.

Mol	Chain	Analysed	<RSRZ>	#RSRZ>2	OWAB(Å ²)	Q<0.9
1	A	691/707 (97%)	0.08	46 (6%) 17 23	12, 23, 40, 74	0

All (46) RSRZ outliers are listed below:

Mol	Chain	Res	Type	RSRZ
1	A	541	TRP	10.4
1	A	544	ASN	5.9
1	A	543	THR	5.0
1	A	335	GLY	4.7
1	A	542	GLU	4.4
1	A	201[A]	VAL	4.4
1	A	55	LYS	4.2
1	A	507	SER	4.2
1	A	226	ILE	4.1
1	A	135	GLY	4.1
1	A	548	GLY	4.1
1	A	506	PHE	3.9
1	A	133	GLU	3.9
1	A	134	ASP	3.6
1	A	202	ILE	3.6
1	A	652	ASP	3.5
1	A	227	LEU	3.5
1	A	719	VAL	3.3
1	A	225	VAL	3.2
1	A	153	ASN	3.1
1	A	56	HIS	3.1
1	A	336	ASN	3.1
1	A	237	PRO	3.0
1	A	505	GLU	2.9
1	A	656[A]	SER	2.8
1	A	487	GLY	2.7
1	A	339	THR	2.7

Continued on next page...

Continued from previous page...

Mol	Chain	Res	Type	RSRZ
1	A	136	ASN	2.7
1	A	334	THR	2.6
1	A	124	HIS	2.6
1	A	235	PHE	2.5
1	A	123	THR	2.5
1	A	132	ASN	2.5
1	A	337	PHE	2.5
1	A	408	GLU	2.5
1	A	651	GLN	2.5
1	A	174	LEU	2.4
1	A	294	VAL	2.3
1	A	122	LYS	2.3
1	A	203	ALA	2.3
1	A	374	LEU	2.3
1	A	297	ILE	2.2
1	A	732	ILE	2.2
1	A	409	GLY	2.2
1	A	200	ILE	2.2
1	A	236	ALA	2.1

6.2 Non-standard residues in protein, DNA, RNA chains [i](#)

In the following table, the Atoms column lists the number of modelled atoms in the group and the number defined in the chemical component dictionary. The B-factors column lists the minimum, median, 95th percentile and maximum values of B factors of atoms in the group. The column labelled 'Q< 0.9' lists the number of atoms with occupancy less than 0.9.

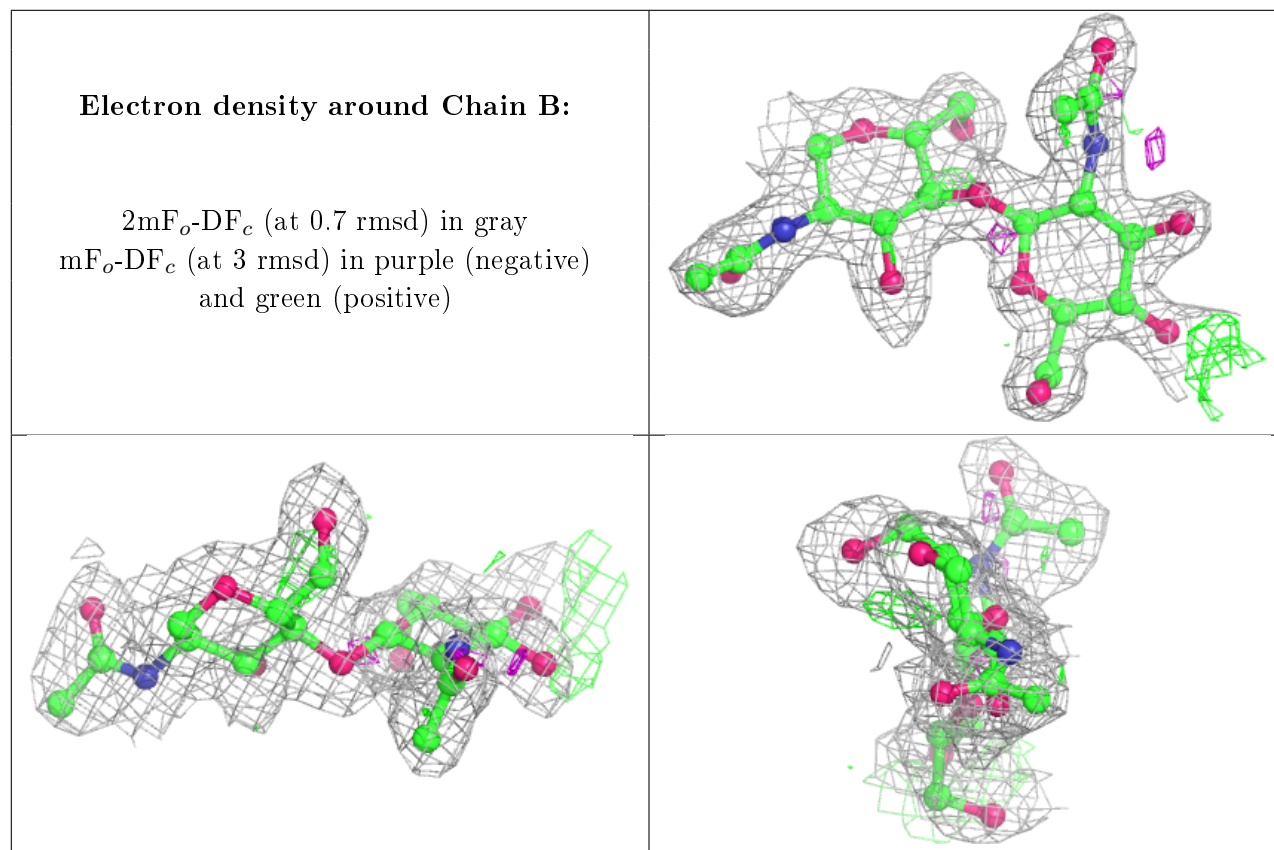
Mol	Type	Chain	Res	Atoms	RSCC	RSR	B-factors(Å ²)	Q<0.9
4	NAG	A	803	14/15	0.70	0.32	44,50,57,57	0
2	NAG	C	2	14/15	0.76	0.33	49,53,58,58	0
2	NAG	B	2	14/15	0.78	0.31	35,45,50,52	0
4	NAG	A	806	14/15	0.84	0.27	60,65,68,70	0
4	NAG	A	807	14/15	0.89	0.14	31,45,51,51	0
2	NAG	D	2	14/15	0.90	0.17	35,40,47,48	0
3	NAG	E	2	14/15	0.91	0.22	36,39,47,48	0
2	NAG	C	1	14/15	0.91	0.16	34,39,42,51	0
3	NAG	E	1	14/15	0.92	0.10	19,24,35,41	0
3	MAN	E	4	11/12	0.92	0.19	40,44,46,49	0
2	NAG	B	1	14/15	0.93	0.12	32,38,43,46	0
2	NAG	D	1	14/15	0.95	0.10	24,27,33,37	0

6.3 Carbohydrates i

In the following table, the Atoms column lists the number of modelled atoms in the group and the number defined in the chemical component dictionary. The B-factors column lists the minimum, median, 95th percentile and maximum values of B factors of atoms in the group. The column labelled 'Q<0.9' lists the number of atoms with occupancy less than 0.9.

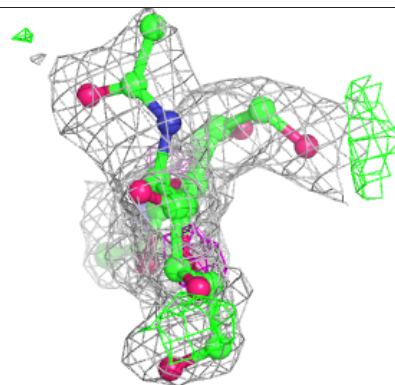
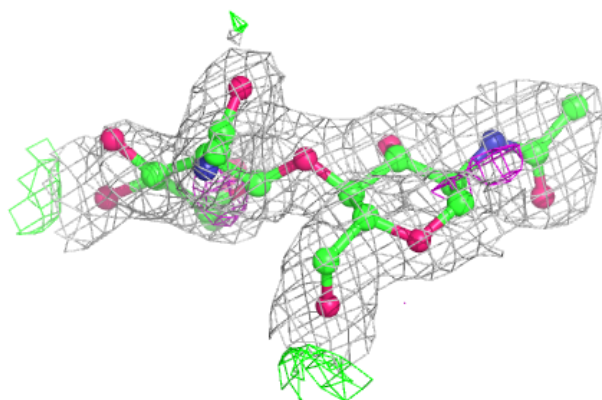
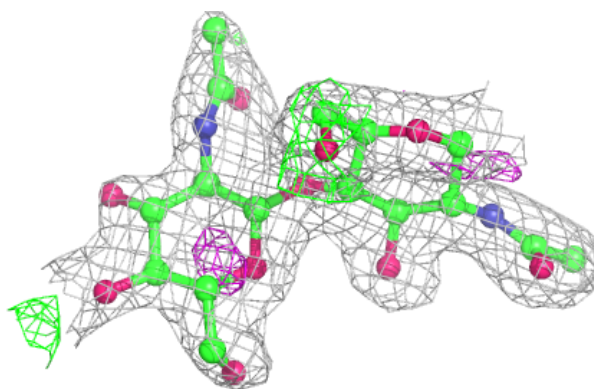
Mol	Type	Chain	Res	Atoms	RSCC	RSR	B-factors(Å ²)	Q<0.9
2	NAG	C	2	14/15	0.76	0.33	49,53,58,58	0
2	NAG	B	2	14/15	0.78	0.31	35,45,50,52	0
2	NAG	D	2	14/15	0.90	0.17	35,40,47,48	0
3	NAG	E	2	14/15	0.91	0.22	36,39,47,48	0
2	NAG	C	1	14/15	0.91	0.16	34,39,42,51	0
3	NAG	E	1	14/15	0.92	0.10	19,24,35,41	0
3	BMA	E	3	11/12	0.92	0.16	36,37,43,45	0
3	MAN	E	4	11/12	0.92	0.19	40,44,46,49	0
2	NAG	B	1	14/15	0.93	0.12	32,38,43,46	0
2	NAG	D	1	14/15	0.95	0.10	24,27,33,37	0

The following is a graphical depiction of the model fit to experimental electron density for oligosaccharide. Each fit is shown from different orientation to approximate a three-dimensional view.

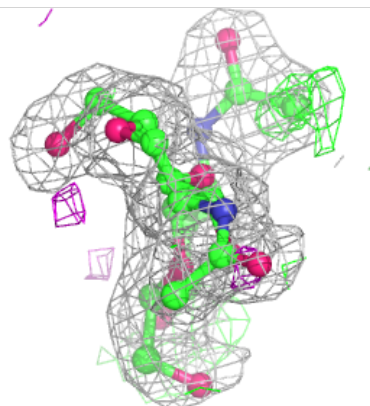
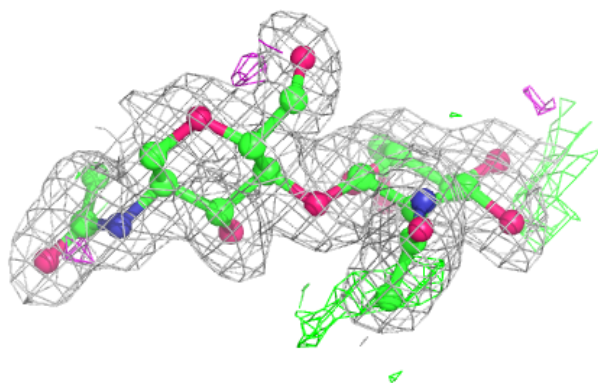
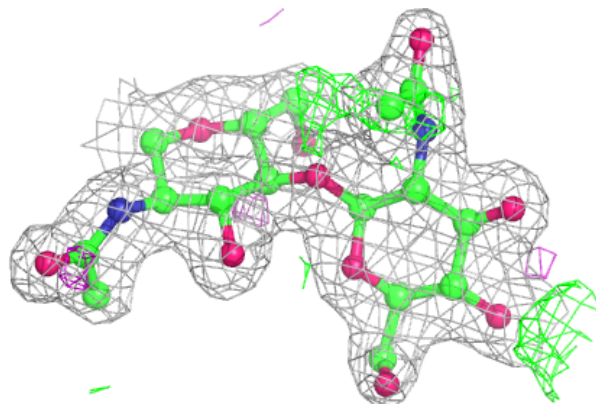


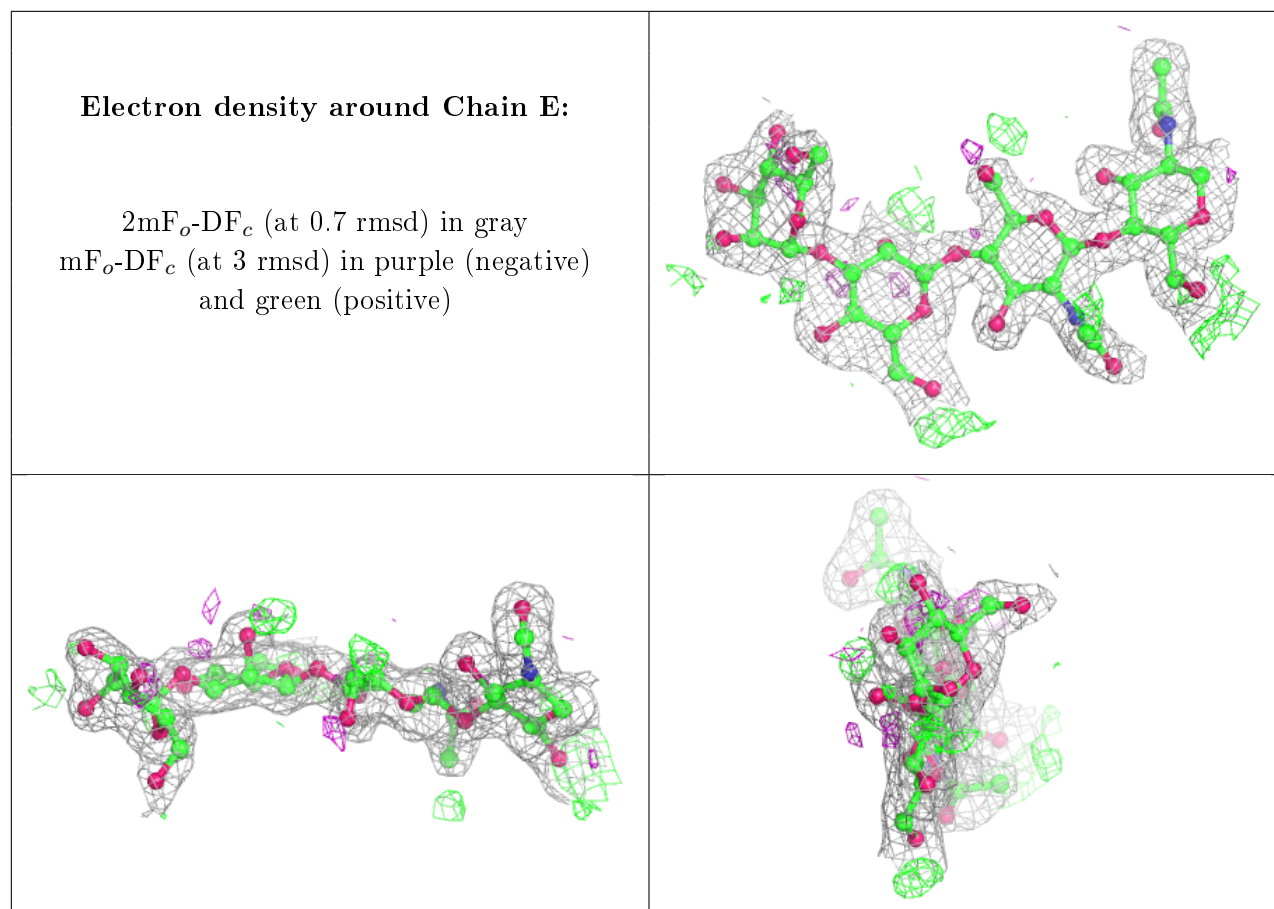
Electron density around Chain C:

$2mF_o-DF_c$ (at 0.7 rmsd) in gray
 mF_o-DF_c (at 3 rmsd) in purple (negative)
and green (positive)

**Electron density around Chain D:**

$2mF_o-DF_c$ (at 0.7 rmsd) in gray
 mF_o-DF_c (at 3 rmsd) in purple (negative)
and green (positive)



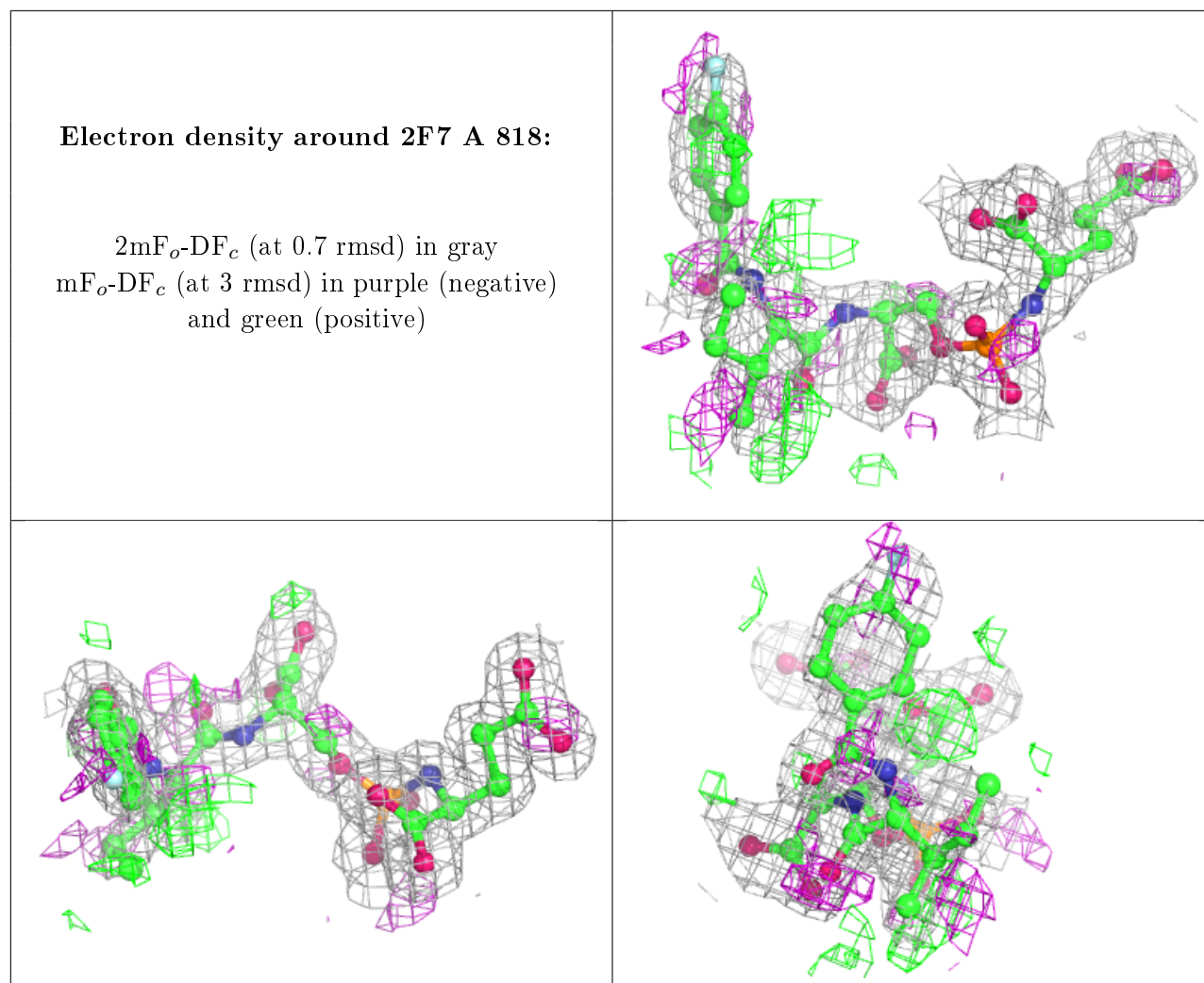


6.4 Ligands [i](#)

In the following table, the Atoms column lists the number of modelled atoms in the group and the number defined in the chemical component dictionary. The B-factors column lists the minimum, median, 95th percentile and maximum values of B factors of atoms in the group. The column labelled 'Q< 0.9' lists the number of atoms with occupancy less than 0.9.

Mol	Type	Chain	Res	Atoms	RSCC	RSR	B-factors(Å ²)	Q<0.9
4	NAG	A	803	14/15	0.70	0.32	44,50,57,57	0
4	NAG	A	806	14/15	0.84	0.27	60,65,68,70	0
4	NAG	A	807	14/15	0.89	0.14	31,45,51,51	0
8	2F7	A	818	37/37	0.97	0.12	14,34,55,56	0
5	ZN	A	814	1/1	1.00	0.05	16,16,16,16	0
7	CL	A	817	1/1	1.00	0.06	20,20,20,20	0
5	ZN	A	815	1/1	1.00	0.06	17,17,17,17	0
6	CA	A	816	1/1	1.00	0.06	14,14,14,14	0

The following is a graphical depiction of the model fit to experimental electron density of all instances of the Ligand of Interest. In addition, ligands with molecular weight > 250 and outliers as shown on the geometry validation Tables will also be included. Each fit is shown from different orientation to approximate a three-dimensional view.



6.5 Other polymers [i](#)

There are no such residues in this entry.