



Full wwPDB X-ray Structure Validation Report ⓘ

Aug 7, 2020 – 08:27 AM BST

PDB ID : 4P4D
Title : X-ray structure of human glutamate carboxypeptidase II (GCPII) in complex with a phosphoramidate inhibitor MP1C
Authors : Barinka, C.
Deposited on : 2014-03-12
Resolution : 1.65 Å(reported)

This is a Full wwPDB X-ray Structure Validation Report for a publicly released PDB entry.

We welcome your comments at validation@mail.wwpdb.org

A user guide is available at

<https://www.wwpdb.org/validation/2017/XrayValidationReportHelp>

with specific help available everywhere you see the ⓘ symbol.

The following versions of software and data (see [references ⓘ](#)) were used in the production of this report:

MolProbity : 4.02b-467
Mogul : 1.8.5 (274361), CSD as541be (2020)
Xtriage (Phenix) : 1.13
EDS : 2.13.1
buster-report : 1.1.7 (2018)
Percentile statistics : 20191225.v01 (using entries in the PDB archive December 25th 2019)
Refmac : 5.8.0158
CCP4 : 7.0.044 (Gargrove)
Ideal geometry (proteins) : Engh & Huber (2001)
Ideal geometry (DNA, RNA) : Parkinson et al. (1996)
Validation Pipeline (wwPDB-VP) : 2.13.1

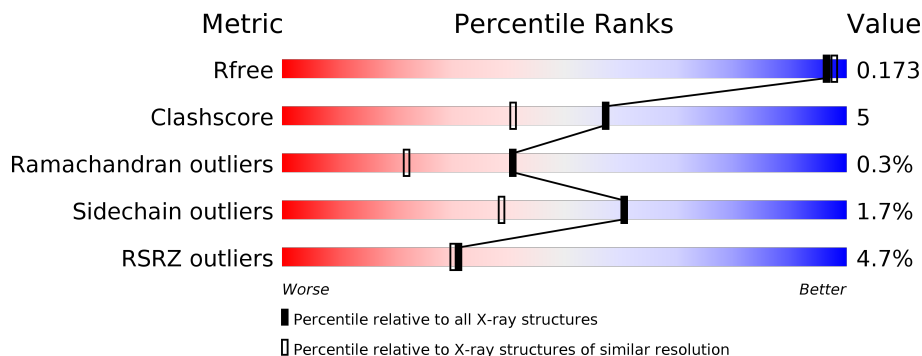
1 Overall quality at a glance

The following experimental techniques were used to determine the structure:

X-RAY DIFFRACTION

The reported resolution of this entry is 1.65 Å.

Percentile scores (ranging between 0-100) for global validation metrics of the entry are shown in the following graphic. The table shows the number of entries on which the scores are based.



Metric	Whole archive (#Entries)	Similar resolution (#Entries, resolution range(Å))
R_{free}	130704	1827 (1.66-1.66)
Clashscore	141614	1931 (1.66-1.66)
Ramachandran outliers	138981	1891 (1.66-1.66)
Sidechain outliers	138945	1891 (1.66-1.66)
RSRZ outliers	127900	1791 (1.66-1.66)

The table below summarises the geometric issues observed across the polymeric chains and their fit to the electron density. The red, orange, yellow and green segments on the lower bar indicate the fraction of residues that contain outliers for ≥ 3 , 2, 1 and 0 types of geometric quality criteria respectively. A grey segment represents the fraction of residues that are not modelled. The numeric value for each fraction is indicated below the corresponding segment, with a dot representing fractions $\leq 5\%$. The upper red bar (where present) indicates the fraction of residues that have poor fit to the electron density. The numeric value is given above the bar.

Mol	Chain	Length	Quality of chain
1	A	707	
2	B	2	
2	C	2	
2	D	2	
3	E	3	
4	F	4	

The following table lists non-polymeric compounds, carbohydrate monomers and non-standard residues in protein, DNA, RNA chains that are outliers for geometric or electron-density-fit criteria:

Mol	Type	Chain	Res	Chirality	Geometry	Clashes	Electron density
2	NAG	C	2	-	-	-	X

2 Entry composition i

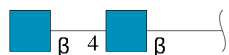
There are 10 unique types of molecules in this entry. The entry contains 6634 atoms, of which 0 are hydrogens and 0 are deuteriums.

In the tables below, the ZeroOcc column contains the number of atoms modelled with zero occupancy, the AltConf column contains the number of residues with at least one atom in alternate conformation and the Trace column contains the number of residues modelled with at most 2 atoms.

- Molecule 1 is a protein called Glutamate carboxypeptidase 2.

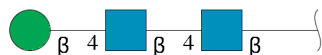
Mol	Chain	Residues	Atoms					ZeroOcc	AltConf	Trace
			Total	C	N	O	S			
1	A	687	5786	3711	969	1083	23	0	65	0

- Molecule 2 is an oligosaccharide called 2-acetamido-2-deoxy-beta-D-glucopyranose-(1-4)-2-acetamido-2-deoxy-beta-D-glucopyranose.



Mol	Chain	Residues	Atoms				ZeroOcc	AltConf	Trace
			Total	C	N	O			
2	B	2	28	16	2	10	0	0	0
2	C	2	28	16	2	10	0	0	0
2	D	2	28	16	2	10	0	0	0

- Molecule 3 is an oligosaccharide called beta-D-mannopyranose-(1-4)-2-acetamido-2-deoxy-beta-D-glucopyranose-(1-4)-2-acetamido-2-deoxy-beta-D-glucopyranose.



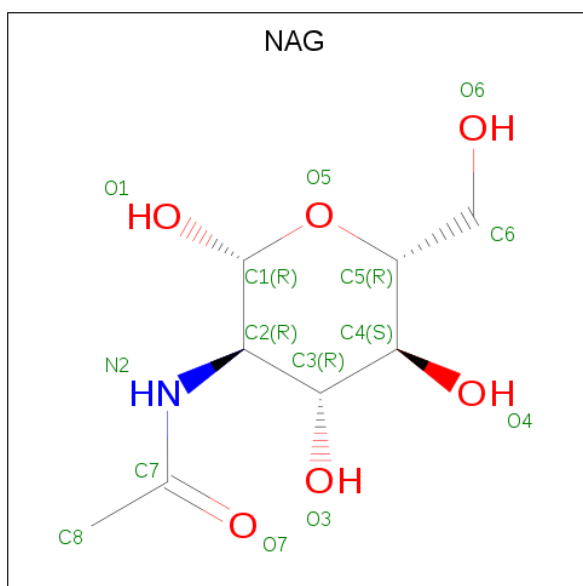
Mol	Chain	Residues	Atoms				ZeroOcc	AltConf	Trace
			Total	C	N	O			
3	E	3	39	22	2	15	0	0	0

- Molecule 4 is an oligosaccharide called alpha-D-mannopyranose-(1-3)-beta-D-mannopyranose-(1-4)-2-acetamido-2-deoxy-beta-D-glucopyranose-(1-4)-2-acetamido-2-deoxy-beta-D-glucopyranose.



Mol	Chain	Residues	Atoms			ZeroOcc	AltConf	Trace	
			Total	C	N				O
4	F	4	50	28	2	20	0	0	0

- Molecule 5 is 2-acetamido-2-deoxy-beta-D-glucopyranose (three-letter code: NAG) (formula: $C_8H_{15}NO_6$).



Mol	Chain	Residues	Atoms			ZeroOcc	AltConf	
			Total	C	N			O
5	A	1	14	8	1	5	0	0
5	A	1	14	8	1	5	0	0

- Molecule 6 is ZINC ION (three-letter code: ZN) (formula: Zn).

Mol	Chain	Residues	Atoms		ZeroOcc	AltConf
			Total	Zn		
6	A	2	2	2	0	0

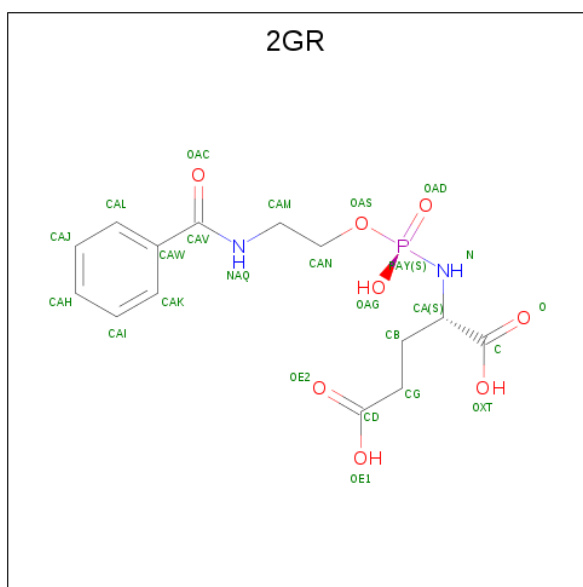
- Molecule 7 is CALCIUM ION (three-letter code: CA) (formula: Ca).

Mol	Chain	Residues	Atoms	ZeroOcc	AltConf
7	A	1	Total Ca 1 1	0	0

- Molecule 8 is CHLORIDE ION (three-letter code: CL) (formula: Cl).

Mol	Chain	Residues	Atoms	ZeroOcc	AltConf
8	A	1	Total Cl 1 1	0	0

- Molecule 9 is N-[(S)-[2-(benzoylamino)ethoxy](hydroxy)phosphoryl]-L-glutamic acid (three-letter code: 2GR) (formula: C₁₄H₁₉N₂O₈P).



Mol	Chain	Residues	Atoms	ZeroOcc	AltConf
9	A	1	Total C N O P 25 14 2 8 1	0	0

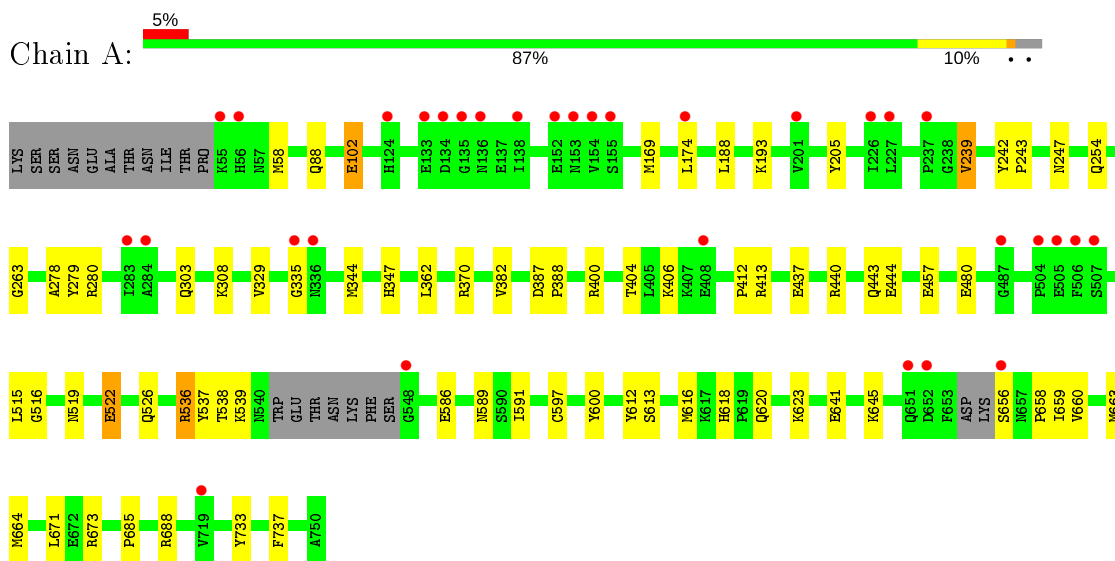
- Molecule 10 is water.

Mol	Chain	Residues	Atoms	ZeroOcc	AltConf
10	A	618	Total O 618 618	0	0

3 Residue-property plots [i](#)

These plots are drawn for all protein, RNA, DNA and oligosaccharide chains in the entry. The first graphic for a chain summarises the proportions of the various outlier classes displayed in the second graphic. The second graphic shows the sequence view annotated by issues in geometry and electron density. Residues are color-coded according to the number of geometric quality criteria for which they contain at least one outlier: green = 0, yellow = 1, orange = 2 and red = 3 or more. A red dot above a residue indicates a poor fit to the electron density ($RSRZ > 2$). Stretches of 2 or more consecutive residues without any outlier are shown as a green connector. Residues present in the sample, but not in the model, are shown in grey.

- Molecule 1: Glutamate carboxypeptidase 2



- Molecule 2: 2-acetamido-2-deoxy-beta-D-glucopyranose-(1-4)-2-acetamido-2-deoxy-beta-D-glucopyranose



- Molecule 2: 2-acetamido-2-deoxy-beta-D-glucopyranose-(1-4)-2-acetamido-2-deoxy-beta-D-glucopyranose



- Molecule 2: 2-acetamido-2-deoxy-beta-D-glucopyranose-(1-4)-2-acetamido-2-deoxy-beta-D-glucopyranose



MAG1
MAG2

- Molecule 3: beta-D-mannopyranose-(1-4)-2-acetamido-2-deoxy-beta-D-glucopyranose-(1-4)-2-acetamido-2-deoxy-beta-D-glucopyranose

Chain E:  100%MAG1
MAG2
BMA3

- Molecule 4: alpha-D-mannopyranose-(1-3)-beta-D-mannopyranose-(1-4)-2-acetamido-2-deoxy-beta-D-glucopyranose-(1-4)-2-acetamido-2-deoxy-beta-D-glucopyranose

Chain F:  100%MAG1
MAG2
BMA3
MAM4

4 Data and refinement statistics

Property	Value	Source
Space group	I 2 2 2	Depositor
Cell constants a, b, c, α , β , γ	101.90Å 130.08Å 159.67Å 90.00° 90.00° 90.00°	Depositor
Resolution (Å)	28.63 – 1.65 28.63 – 1.65	Depositor EDS
% Data completeness (in resolution range)	98.6 (28.63-1.65) 98.6 (28.63-1.65)	Depositor EDS
R_{merge}	(Not available)	Depositor
R_{sym}	(Not available)	Depositor
$\langle I/\sigma(I) \rangle$ ¹	2.10 (at 1.65Å)	Xtrriage
Refinement program	REFMAC 5.5.0109	Depositor
R, R_{free}	0.157 , 0.174 0.156 , 0.173	Depositor DCC
R_{free} test set	1255 reflections (1.01%)	wwPDB-VP
Wilson B-factor (Å ²)	22.7	Xtrriage
Anisotropy	0.030	Xtrriage
Bulk solvent k_{sol} (e/Å ³), B_{sol} (Å ²)	0.35 , 49.6	EDS
L-test for twinning ²	$\langle L \rangle = 0.50$, $\langle L^2 \rangle = 0.34$	Xtrriage
Estimated twinning fraction	No twinning to report.	Xtrriage
F_o, F_c correlation	0.97	EDS
Total number of atoms	6634	wwPDB-VP
Average B, all atoms (Å ²)	28.0	wwPDB-VP

Xtrriage's analysis on translational NCS is as follows: *The largest off-origin peak in the Patterson function is 4.12% of the height of the origin peak. No significant pseudotranslation is detected.*

¹Intensities estimated from amplitudes.

²Theoretical values of $\langle |L| \rangle$, $\langle L^2 \rangle$ for acentric reflections are 0.5, 0.333 respectively for untwinned datasets, and 0.375, 0.2 for perfectly twinned datasets.

5 Model quality [i](#)

5.1 Standard geometry [i](#)

Bond lengths and bond angles in the following residue types are not validated in this section: 2GR, BMA, NAG, CL, CA, ZN, MAN

The Z score for a bond length (or angle) is the number of standard deviations the observed value is removed from the expected value. A bond length (or angle) with $|Z| > 5$ is considered an outlier worth inspection. RMSZ is the root-mean-square of all Z scores of the bond lengths (or angles).

Mol	Chain	Bond lengths		Bond angles	
		RMSZ	# Z >5	RMSZ	# Z >5
1	A	0.85	2/6108 (0.0%)	0.80	4/8266 (0.0%)

All (2) bond length outliers are listed below:

Mol	Chain	Res	Type	Atoms	Z	Observed(Å)	Ideal(Å)
1	A	522	GLU	CG-CD	5.37	1.60	1.51
1	A	737	PHE	CD2-CE2	5.03	1.49	1.39

All (4) bond angle outliers are listed below:

Mol	Chain	Res	Type	Atoms	Z	Observed(°)	Ideal(°)
1	A	370	ARG	NE-CZ-NH1	6.26	123.43	120.30
1	A	174[A]	LEU	CA-CB-CG	5.65	128.30	115.30
1	A	174[B]	LEU	CA-CB-CG	5.65	128.30	115.30
1	A	440	ARG	NE-CZ-NH2	-5.29	117.65	120.30

There are no chirality outliers.

There are no planarity outliers.

5.2 Too-close contacts [i](#)

In the following table, the Non-H and H(model) columns list the number of non-hydrogen atoms and hydrogen atoms in the chain respectively. The H(added) column lists the number of hydrogen atoms added and optimized by MolProbity. The Clashes column lists the number of clashes within the asymmetric unit, whereas Symm-Clashes lists symmetry related clashes.

Mol	Chain	Non-H	H(model)	H(added)	Clashes	Symm-Clashes
1	A	5786	0	5647	55	0
2	B	28	0	25	2	0

Continued on next page...

Continued from previous page...

Mol	Chain	Non-H	H(model)	H(added)	Clashes	Symm-Clashes
2	C	28	0	25	1	0
2	D	28	0	25	0	0
3	E	39	0	34	0	0
4	F	50	0	43	0	0
5	A	28	0	26	0	0
6	A	2	0	0	0	0
7	A	1	0	0	0	0
8	A	1	0	0	0	0
9	A	25	0	16	2	0
10	A	618	0	0	27	1
All	All	6634	0	5841	59	1

The all-atom clashscore is defined as the number of clashes found per 1000 atoms (including hydrogen atoms). The all-atom clashscore for this structure is 5.

All (59) close contacts within the same asymmetric unit are listed below, sorted by their clash magnitude.

Atom-1	Atom-2	Interatomic distance (Å)	Clash overlap (Å)
1:A:660[A]:VAL:O	1:A:664[A]:MET:HG2	1.32	1.25
1:A:412:PRO:HA	1:A:589[B]:ASN:HD21	1.29	0.93
1:A:437[A]:GLU:OE1	10:A:902:HOH:O	1.91	0.86
1:A:597[B]:CYS:SG	1:A:671:LEU:HD22	2.17	0.85
1:A:515:LEU:O	10:A:1496:HOH:O	1.96	0.84
1:A:597[B]:CYS:SG	1:A:671:LEU:CD2	2.69	0.79
1:A:362:LEU:CD1	1:A:406:LYS:HD2	2.12	0.79
1:A:400:ARG:O	1:A:404[B]:THR:HG23	1.83	0.78
1:A:641:GLU:HG3	10:A:1338:HOH:O	1.83	0.78
9:A:820:2GR:H5	10:A:1517:HOH:O	1.84	0.78
1:A:516:GLY:O	1:A:526[B]:GLN:NE2	2.17	0.76
1:A:733:TYR:HE2	10:A:979:HOH:O	1.69	0.74
1:A:688[B]:ARG:NH1	10:A:1070:HOH:O	2.25	0.68
1:A:362:LEU:HD11	1:A:406:LYS:HD2	1.78	0.66
1:A:645[A]:LYS:HD2	10:A:1479:HOH:O	1.96	0.65
1:A:656[B]:SER:O	10:A:903:HOH:O	2.13	0.65
10:A:1225:HOH:O	2:B:2:NAG:H81	1.98	0.64
1:A:656[B]:SER:CB	10:A:903:HOH:O	2.51	0.57
1:A:457[B]:GLU:HG2	1:A:538:THR:HA	1.87	0.55
1:A:278:ALA:HB3	1:A:280[A]:ARG:NH1	2.25	0.52
1:A:88[A]:GLN:HG2	10:A:1193:HOH:O	2.10	0.51
10:A:1194:HOH:O	2:C:1:NAG:H83	2.10	0.50
1:A:656[B]:SER:OG	10:A:903:HOH:O	2.17	0.50

Continued on next page...

Continued from previous page...

Atom-1	Atom-2	Interatomic distance (Å)	Clash overlap (Å)
1:A:612:TYR:CZ	1:A:616:MET:HG3	2.46	0.50
1:A:656[B]:SER:O	1:A:658[B]:PRO:HD3	2.11	0.50
1:A:362:LEU:HD13	1:A:406:LYS:HD2	1.93	0.49
1:A:688[B]:ARG:NH1	10:A:901:HOH:O	1.66	0.49
1:A:308:LYS:HB2	10:A:1296:HOH:O	2.13	0.49
1:A:412:PRO:HA	1:A:589[B]:ASN:ND2	2.11	0.48
1:A:169:MET:HA	1:A:344:MET:O	2.14	0.48
1:A:480:GLU:HG3	10:A:1507:HOH:O	2.12	0.48
1:A:239[A]:VAL:HG22	1:A:247:ASN:ND2	2.29	0.47
1:A:733:TYR:CE2	10:A:979:HOH:O	2.53	0.47
1:A:597[B]:CYS:HG	1:A:671:LEU:HD22	1.80	0.47
1:A:278:ALA:HB3	1:A:280[A]:ARG:CZ	2.46	0.46
1:A:597[B]:CYS:SG	1:A:671:LEU:HD23	2.55	0.46
1:A:613[B]:SER:OG	10:A:1228:HOH:O	2.20	0.46
1:A:58[B]:MET:SD	1:A:586:GLU:HG2	2.57	0.45
1:A:685:PRO:O	1:A:688[B]:ARG:HD3	2.16	0.45
10:A:1448:HOH:O	2:B:2:NAG:H83	2.17	0.45
1:A:618:HIS:HE1	10:A:1141:HOH:O	2.01	0.44
1:A:620:GLN:NE2	10:A:910:HOH:O	2.51	0.44
1:A:536[B]:ARG:HH12	9:A:820:2GR:CAK	2.31	0.44
1:A:188:LEU:HD21	1:A:329[A]:VAL:HG11	2.00	0.44
1:A:347:HIS:HE1	10:A:1298:HOH:O	1.99	0.44
1:A:659[B]:ILE:O	1:A:663[B]:MET:HG3	2.18	0.44
1:A:591[A]:ILE:HD12	10:A:1018:HOH:O	2.19	0.43
1:A:413:ARG:H	1:A:589[B]:ASN:ND2	2.17	0.42
1:A:443[A]:GLN:HG3	1:A:444:GLU:CD	2.41	0.42
1:A:656[B]:SER:HB2	10:A:903:HOH:O	2.18	0.41
1:A:387:ASP:HA	1:A:388:PRO:HA	1.89	0.41
1:A:205:TYR:CE1	1:A:254:GLN:HB3	2.56	0.41
1:A:645[A]:LYS:HD3	10:A:1372:HOH:O	2.21	0.40
1:A:263:GLY:HA2	1:A:522:GLU:OE1	2.21	0.40
1:A:623:LYS:NZ	10:A:913:HOH:O	2.53	0.40
1:A:242:TYR:CG	1:A:243:PRO:HA	2.57	0.40
1:A:347:HIS:CE1	10:A:1298:HOH:O	2.74	0.40

All (1) symmetry-related close contacts are listed below. The label for Atom-2 includes the symmetry operator and encoded unit-cell translations to be applied.

Atom-1	Atom-2	Interatomic distance (Å)	Clash overlap (Å)
10:A:905:HOH:O	10:A:965:HOH:O[2_565]	1.78	0.42

5.3 Torsion angles [i](#)

5.3.1 Protein backbone [i](#)

In the following table, the Percentiles column shows the percent Ramachandran outliers of the chain as a percentile score with respect to all X-ray entries followed by that with respect to entries of similar resolution.

The Analysed column shows the number of residues for which the backbone conformation was analysed, and the total number of residues.

Mol	Chain	Analysed	Favoured	Allowed	Outliers	Percentiles
1	A	742/707 (105%)	724 (98%)	16 (2%)	2 (0%)	41 22

All (2) Ramachandran outliers are listed below:

Mol	Chain	Res	Type
1	A	382	VAL
1	A	335	GLY

5.3.2 Protein sidechains [i](#)

In the following table, the Percentiles column shows the percent sidechain outliers of the chain as a percentile score with respect to all X-ray entries followed by that with respect to entries of similar resolution.

The Analysed column shows the number of residues for which the sidechain conformation was analysed, and the total number of residues.

Mol	Chain	Analysed	Rotameric	Outliers	Percentiles
1	A	646/603 (107%)	633 (98%)	13 (2%)	55 32

All (13) residues with a non-rotameric sidechain are listed below:

Mol	Chain	Res	Type
1	A	102[A]	GLU
1	A	102[B]	GLU
1	A	193	LYS
1	A	239[A]	VAL
1	A	239[B]	VAL
1	A	303	GLN
1	A	519	ASN
1	A	536[A]	ARG
1	A	536[B]	ARG

Continued on next page...

Continued from previous page...

Mol	Chain	Res	Type
1	A	537	TYR
1	A	539[A]	LYS
1	A	600	TYR
1	A	673	ARG

Some sidechains can be flipped to improve hydrogen bonding and reduce clashes. All (1) such sidechains are listed below:

Mol	Chain	Res	Type
1	A	618	HIS

5.3.3 RNA [i](#)

There are no RNA molecules in this entry.

5.4 Non-standard residues in protein, DNA, RNA chains [i](#)

13 non-standard protein/DNA/RNA residues are modelled in this entry.

In the following table, the Counts columns list the number of bonds (or angles) for which Mogul statistics could be retrieved, the number of bonds (or angles) that are observed in the model and the number of bonds (or angles) that are defined in the Chemical Component Dictionary. The Link column lists molecule types, if any, to which the group is linked. The Z score for a bond length (or angle) is the number of standard deviations the observed value is removed from the expected value. A bond length (or angle) with $|Z| > 2$ is considered an outlier worth inspection. RMSZ is the root-mean-square of all Z scores of the bond lengths (or angles).

Mol	Type	Chain	Res	Link	Bond lengths			Bond angles		
					Counts	RMSZ	# Z > 2	Counts	RMSZ	# Z > 2
4	NAG	F	1	1,4	14,14,15	0.63	0	17,19,21	1.36	2 (11%)
3	NAG	E	1	1,3	14,14,15	1.01	1 (7%)	17,19,21	0.85	0
2	NAG	D	2	2	14,14,15	0.50	0	17,19,21	1.11	2 (11%)
2	NAG	B	1	1,2	14,14,15	0.52	0	17,19,21	1.41	3 (17%)
3	NAG	E	2	3	14,14,15	0.47	0	17,19,21	1.06	1 (5%)
2	NAG	C	2	2	14,14,15	0.50	0	17,19,21	0.98	1 (5%)
5	NAG	A	808	1	14,14,15	0.68	0	17,19,21	1.44	3 (17%)
4	MAN	F	4	4	11,11,12	0.58	0	15,15,17	1.16	1 (6%)
5	NAG	A	807	1	14,14,15	0.47	0	17,19,21	2.19	2 (11%)
4	NAG	F	2	4	14,14,15	0.63	0	17,19,21	1.19	1 (5%)
2	NAG	B	2	2	14,14,15	0.69	0	17,19,21	1.29	1 (5%)

Mol	Type	Chain	Res	Link	Bond lengths			Bond angles		
					Counts	RMSZ	# Z > 2	Counts	RMSZ	# Z > 2
2	NAG	D	1	1,2	14,14,15	0.62	0	17,19,21	1.30	1 (5%)
2	NAG	C	1	1,2	14,14,15	0.75	0	17,19,21	1.41	3 (17%)

In the following table, the Chirals column lists the number of chiral outliers, the number of chiral centers analysed, the number of these observed in the model and the number defined in the Chemical Component Dictionary. Similar counts are reported in the Torsion and Rings columns. '-' means no outliers of that kind were identified.

Mol	Type	Chain	Res	Link	Chirals	Torsions	Rings
4	NAG	F	1	1,4	-	0/6/23/26	0/1/1/1
3	NAG	E	1	1,3	-	2/6/23/26	0/1/1/1
2	NAG	D	2	2	-	1/6/23/26	0/1/1/1
2	NAG	B	1	1,2	-	0/6/23/26	0/1/1/1
3	NAG	E	2	3	-	2/6/23/26	0/1/1/1
2	NAG	C	2	2	-	0/6/23/26	0/1/1/1
5	NAG	A	808	1	-	0/6/23/26	0/1/1/1
4	MAN	F	4	4	-	0/2/19/22	0/1/1/1
5	NAG	A	807	1	-	2/6/23/26	0/1/1/1
4	NAG	F	2	4	-	2/6/23/26	0/1/1/1
2	NAG	B	2	2	-	2/6/23/26	0/1/1/1
2	NAG	D	1	1,2	-	0/6/23/26	0/1/1/1
2	NAG	C	1	1,2	-	2/6/23/26	0/1/1/1

All (1) bond length outliers are listed below:

Mol	Chain	Res	Type	Atoms	Z	Observed(Å)	Ideal(Å)
3	E	1	NAG	O7-C7	2.86	1.29	1.23

All (21) bond angle outliers are listed below:

Mol	Chain	Res	Type	Atoms	Z	Observed(°)	Ideal(°)
5	A	807	NAG	C1-O5-C5	7.78	122.73	112.19
2	D	1	NAG	C1-O5-C5	3.73	117.25	112.19
2	B	2	NAG	C2-N2-C7	3.51	127.90	122.90
4	F	1	NAG	O4-C4-C5	-3.21	101.34	109.30
4	F	4	MAN	O5-C5-C6	3.11	112.08	107.20
5	A	808	NAG	C1-O5-C5	3.07	116.35	112.19
5	A	808	NAG	O5-C5-C6	3.02	111.94	107.20
2	B	1	NAG	O5-C1-C2	-2.95	106.64	111.29
2	C	2	NAG	C1-O5-C5	2.87	116.08	112.19

Continued on next page...

Continued from previous page...

Mol	Chain	Res	Type	Atoms	Z	Observed(°)	Ideal(°)
4	F	2	NAG	C3-C4-C5	-2.76	105.31	110.24
2	C	1	NAG	O5-C5-C6	2.71	111.45	107.20
5	A	808	NAG	O5-C1-C2	-2.66	107.08	111.29
2	C	1	NAG	C1-C2-N2	-2.56	106.11	110.49
2	B	1	NAG	C2-N2-C7	-2.44	119.42	122.90
3	E	2	NAG	C8-C7-N2	2.40	120.16	116.10
2	D	2	NAG	O4-C4-C5	2.25	114.88	109.30
2	B	1	NAG	C4-C3-C2	2.23	114.29	111.02
4	F	1	NAG	O5-C1-C2	-2.18	107.84	111.29
2	C	1	NAG	O3-C3-C2	-2.16	104.99	109.47
2	D	2	NAG	O5-C5-C6	2.07	110.45	107.20
5	A	807	NAG	C6-C5-C4	-2.03	108.25	113.00

There are no chirality outliers.

All (13) torsion outliers are listed below:

Mol	Chain	Res	Type	Atoms
3	E	1	NAG	C8-C7-N2-C2
3	E	1	NAG	O7-C7-N2-C2
3	E	2	NAG	C8-C7-N2-C2
3	E	2	NAG	O7-C7-N2-C2
4	F	2	NAG	C8-C7-N2-C2
4	F	2	NAG	O7-C7-N2-C2
2	B	2	NAG	C8-C7-N2-C2
2	B	2	NAG	O7-C7-N2-C2
2	C	1	NAG	C8-C7-N2-C2
2	C	1	NAG	O7-C7-N2-C2
5	A	807	NAG	C4-C5-C6-O6
5	A	807	NAG	O5-C5-C6-O6
2	D	2	NAG	C4-C5-C6-O6

There are no ring outliers.

2 monomers are involved in 3 short contacts:

Mol	Chain	Res	Type	Clashes	Symm-Clashes
2	B	2	NAG	2	0
2	C	1	NAG	1	0

5.5 Carbohydrates

13 monosaccharides are modelled in this entry.

In the following table, the Counts columns list the number of bonds (or angles) for which Mogul statistics could be retrieved, the number of bonds (or angles) that are observed in the model and the number of bonds (or angles) that are defined in the Chemical Component Dictionary. The Link column lists molecule types, if any, to which the group is linked. The Z score for a bond length (or angle) is the number of standard deviations the observed value is removed from the expected value. A bond length (or angle) with $|Z| > 2$ is considered an outlier worth inspection. RMSZ is the root-mean-square of all Z scores of the bond lengths (or angles).

Mol	Type	Chain	Res	Link	Bond lengths			Bond angles		
					Counts	RMSZ	# Z > 2	Counts	RMSZ	# Z > 2
2	NAG	B	1	1,2	14,14,15	0.52	0	17,19,21	1.41	3 (17%)
2	NAG	B	2	2	14,14,15	0.69	0	17,19,21	1.29	1 (5%)
2	NAG	C	1	1,2	14,14,15	0.75	0	17,19,21	1.41	3 (17%)
2	NAG	C	2	2	14,14,15	0.50	0	17,19,21	0.98	1 (5%)
2	NAG	D	1	1,2	14,14,15	0.62	0	17,19,21	1.30	1 (5%)
2	NAG	D	2	2	14,14,15	0.50	0	17,19,21	1.11	2 (11%)
3	NAG	E	1	1,3	14,14,15	1.01	1 (7%)	17,19,21	0.85	0
3	NAG	E	2	3	14,14,15	0.47	0	17,19,21	1.06	1 (5%)
3	BMA	E	3	3	11,11,12	0.70	0	15,15,17	1.07	1 (6%)
4	NAG	F	1	1,4	14,14,15	0.63	0	17,19,21	1.36	2 (11%)
4	NAG	F	2	4	14,14,15	0.63	0	17,19,21	1.19	1 (5%)
4	BMA	F	3	4	11,11,12	0.65	0	15,15,17	0.87	1 (6%)
4	MAN	F	4	4	11,11,12	0.58	0	15,15,17	1.16	1 (6%)

In the following table, the Chirals column lists the number of chiral outliers, the number of chiral centers analysed, the number of these observed in the model and the number defined in the Chemical Component Dictionary. Similar counts are reported in the Torsion and Rings columns. '-' means no outliers of that kind were identified.

Mol	Type	Chain	Res	Link	Chirals	Torsions	Rings
2	NAG	B	1	1,2	-	0/6/23/26	0/1/1/1
2	NAG	B	2	2	-	2/6/23/26	0/1/1/1
2	NAG	C	1	1,2	-	2/6/23/26	0/1/1/1
2	NAG	C	2	2	-	0/6/23/26	0/1/1/1
2	NAG	D	1	1,2	-	0/6/23/26	0/1/1/1
2	NAG	D	2	2	-	1/6/23/26	0/1/1/1
3	NAG	E	1	1,3	-	2/6/23/26	0/1/1/1
3	NAG	E	2	3	-	2/6/23/26	0/1/1/1
3	BMA	E	3	3	-	2/2/19/22	0/1/1/1
4	NAG	F	1	1,4	-	0/6/23/26	0/1/1/1
4	NAG	F	2	4	-	2/6/23/26	0/1/1/1

Continued on next page...

Continued from previous page...

Mol	Type	Chain	Res	Link	Chirals	Torsions	Rings
4	BMA	F	3	4	-	0/2/19/22	0/1/1/1
4	MAN	F	4	4	-	0/2/19/22	0/1/1/1

All (1) bond length outliers are listed below:

Mol	Chain	Res	Type	Atoms	Z	Observed(Å)	Ideal(Å)
3	E	1	NAG	O7-C7	2.86	1.29	1.23

All (18) bond angle outliers are listed below:

Mol	Chain	Res	Type	Atoms	Z	Observed(°)	Ideal(°)
2	D	1	NAG	C1-O5-C5	3.73	117.25	112.19
2	B	2	NAG	C2-N2-C7	3.51	127.90	122.90
4	F	1	NAG	O4-C4-C5	-3.21	101.34	109.30
4	F	4	MAN	O5-C5-C6	3.11	112.08	107.20
2	B	1	NAG	O5-C1-C2	-2.95	106.64	111.29
2	C	2	NAG	C1-O5-C5	2.87	116.08	112.19
4	F	2	NAG	C3-C4-C5	-2.76	105.31	110.24
2	C	1	NAG	O5-C5-C6	2.71	111.45	107.20
2	C	1	NAG	C1-C2-N2	-2.56	106.11	110.49
2	B	1	NAG	C2-N2-C7	-2.44	119.42	122.90
3	E	2	NAG	C8-C7-N2	2.40	120.16	116.10
2	D	2	NAG	O4-C4-C5	2.25	114.88	109.30
2	B	1	NAG	C4-C3-C2	2.23	114.29	111.02
4	F	1	NAG	O5-C1-C2	-2.18	107.84	111.29
2	C	1	NAG	O3-C3-C2	-2.16	104.99	109.47
4	F	3	BMA	O3-C3-C2	-2.12	105.93	109.99
2	D	2	NAG	O5-C5-C6	2.07	110.45	107.20
3	E	3	BMA	C1-O5-C5	2.02	114.92	112.19

There are no chirality outliers.

All (13) torsion outliers are listed below:

Mol	Chain	Res	Type	Atoms
3	E	3	BMA	C4-C5-C6-O6
3	E	1	NAG	C8-C7-N2-C2
3	E	1	NAG	O7-C7-N2-C2
3	E	2	NAG	C8-C7-N2-C2
3	E	2	NAG	O7-C7-N2-C2
4	F	2	NAG	C8-C7-N2-C2
4	F	2	NAG	O7-C7-N2-C2

Continued on next page...

Continued from previous page...

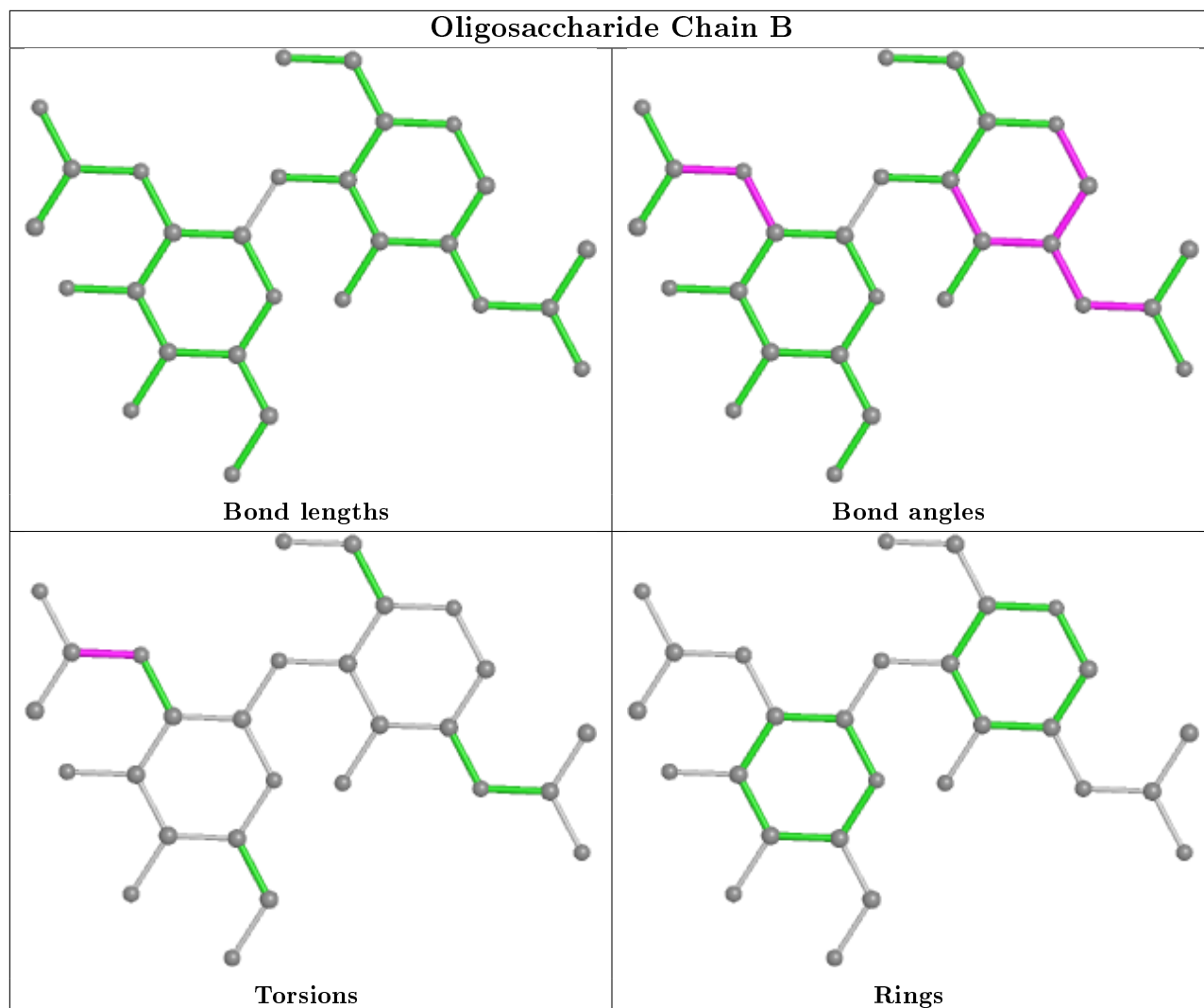
Mol	Chain	Res	Type	Atoms
2	B	2	NAG	C8-C7-N2-C2
2	B	2	NAG	O7-C7-N2-C2
2	C	1	NAG	C8-C7-N2-C2
2	C	1	NAG	O7-C7-N2-C2
3	E	3	BMA	O5-C5-C6-O6
2	D	2	NAG	C4-C5-C6-O6

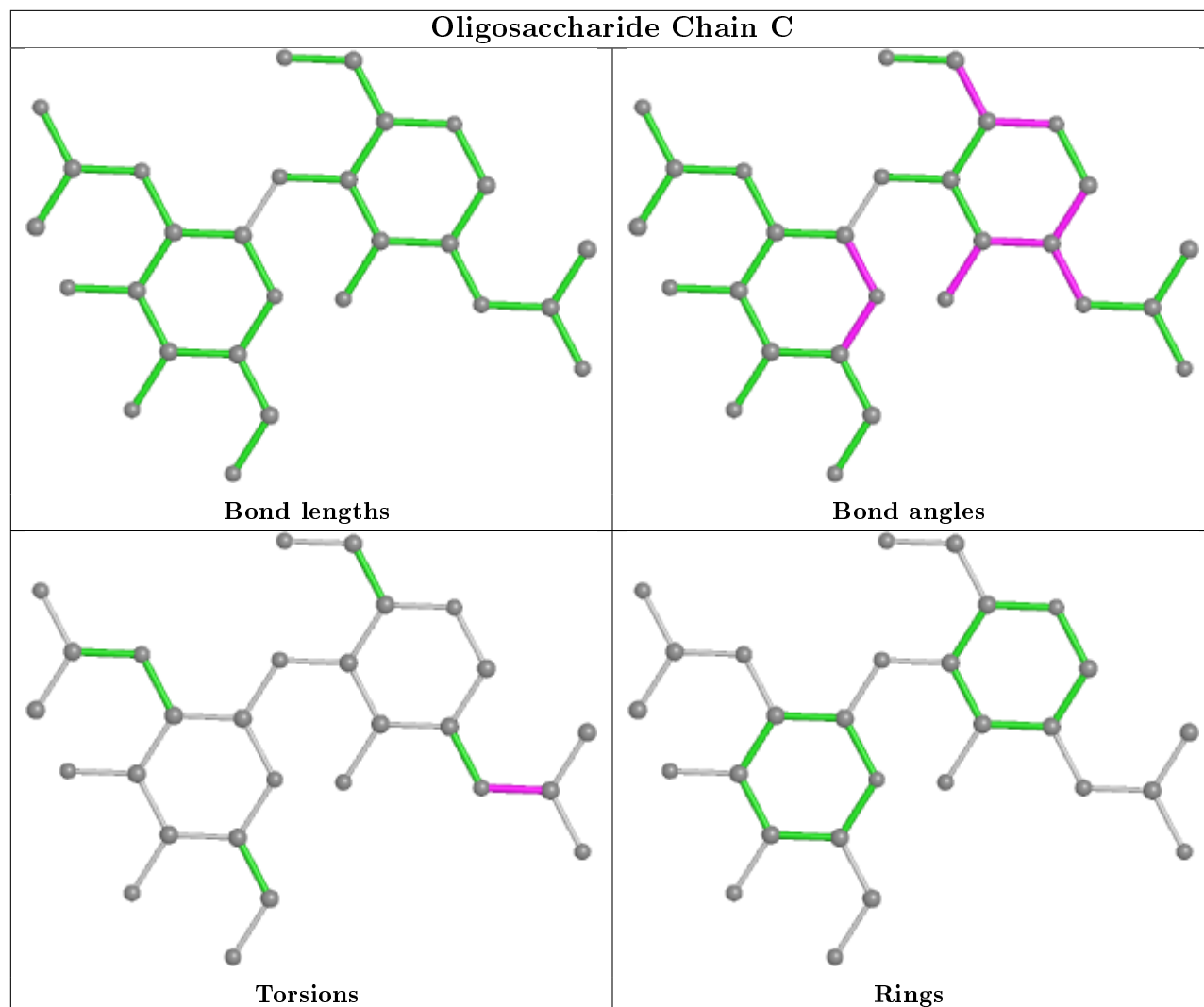
There are no ring outliers.

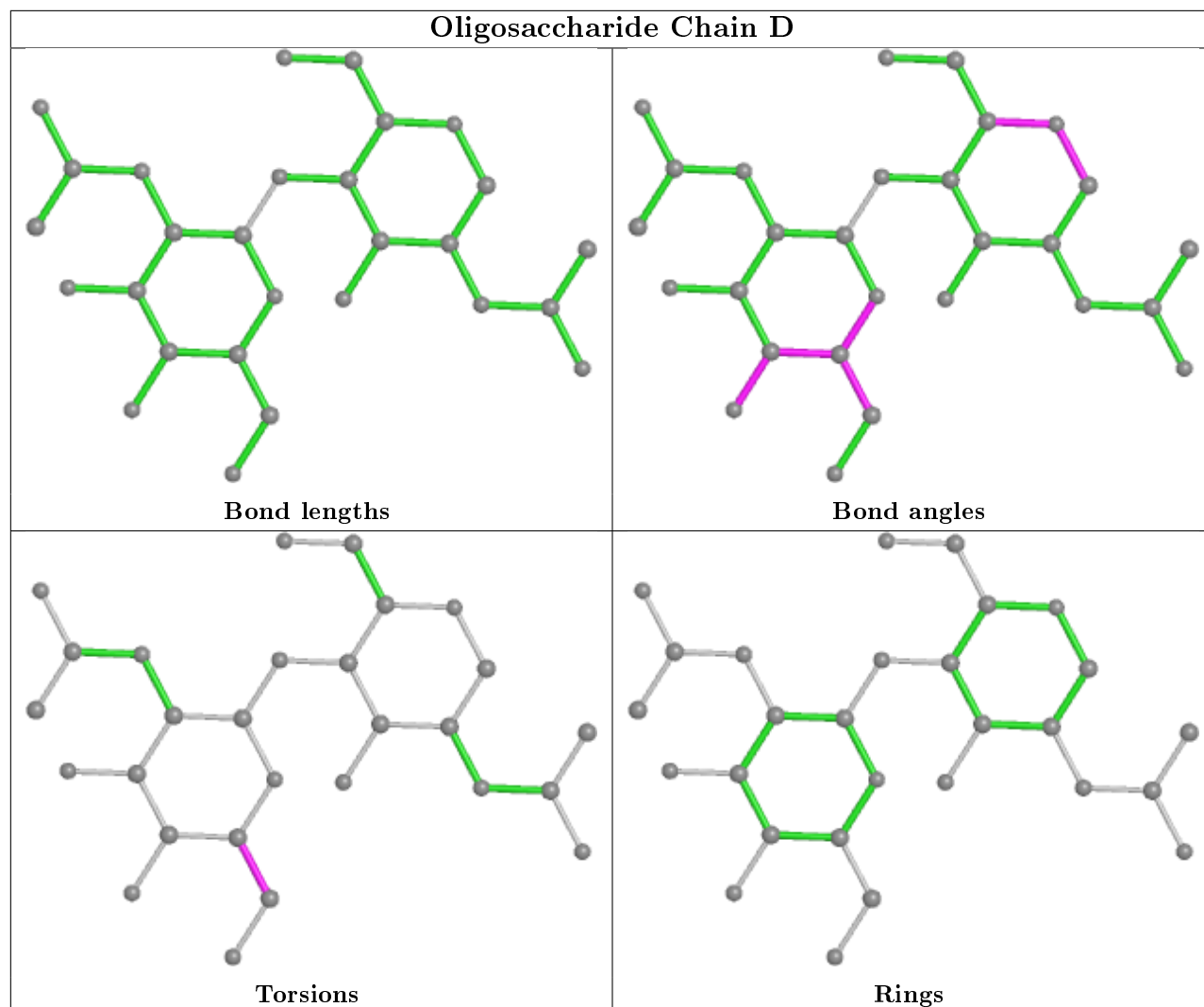
2 monomers are involved in 3 short contacts:

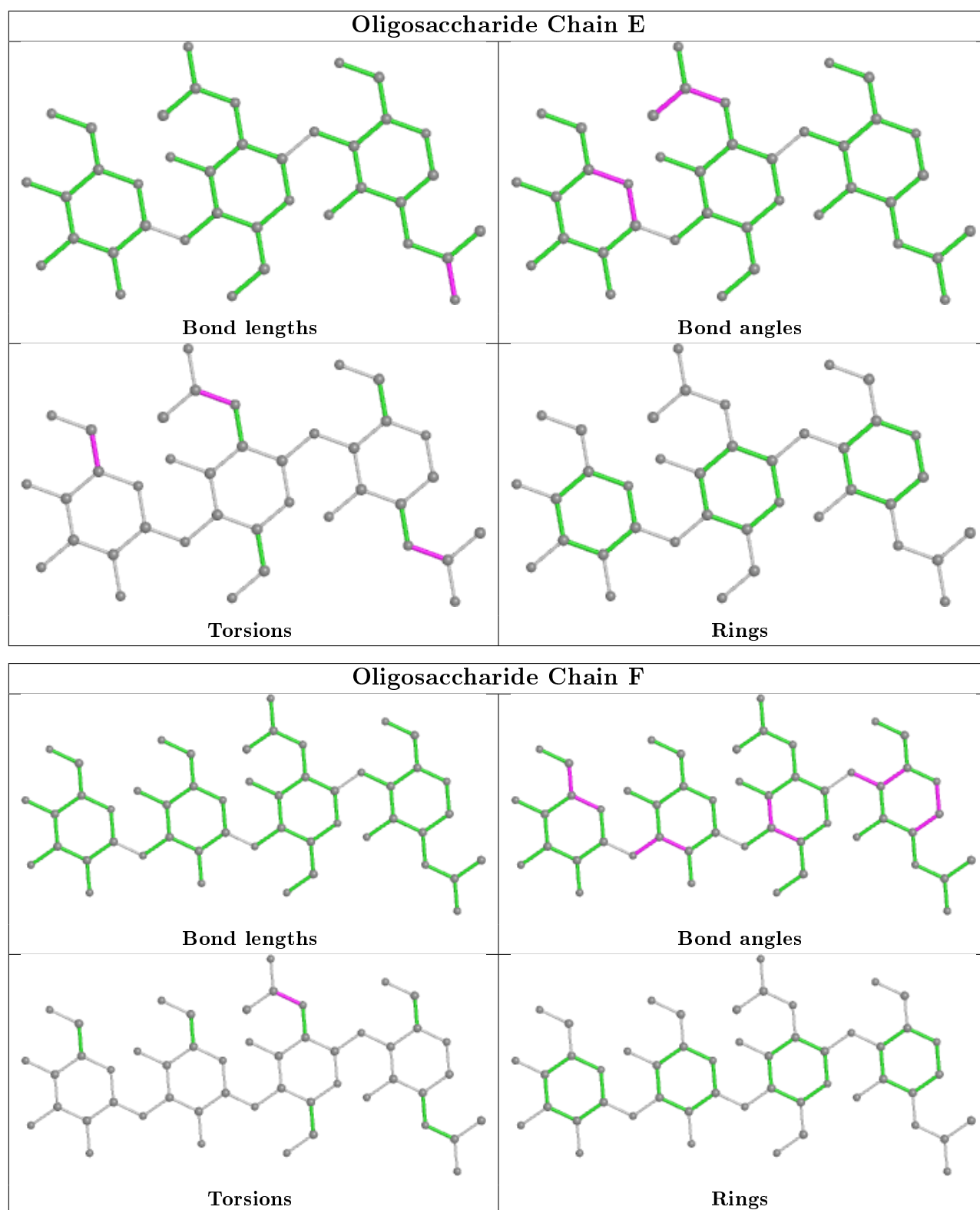
Mol	Chain	Res	Type	Clashes	Symm-Clashes
2	B	2	NAG	2	0
2	C	1	NAG	1	0

The following is a two-dimensional graphical depiction of Mogul quality analysis of bond lengths, bond angles, torsion angles, and ring geometry for oligosaccharide.









5.6 Ligand geometry [i](#)

Of 7 ligands modelled in this entry, 4 are monoatomic - leaving 3 for Mogul analysis.

In the following table, the Counts columns list the number of bonds (or angles) for which Mogul

statistics could be retrieved, the number of bonds (or angles) that are observed in the model and the number of bonds (or angles) that are defined in the Chemical Component Dictionary. The Link column lists molecule types, if any, to which the group is linked. The Z score for a bond length (or angle) is the number of standard deviations the observed value is removed from the expected value. A bond length (or angle) with $|Z| > 2$ is considered an outlier worth inspection. RMSZ is the root-mean-square of all Z scores of the bond lengths (or angles).

Mol	Type	Chain	Res	Link	Bond lengths			Bond angles		
					Counts	RMSZ	# Z > 2	Counts	RMSZ	# Z > 2
5	NAG	A	807	1	14,14,15	0.47	0	17,19,21	2.19	2 (11%)
5	NAG	A	808	1	14,14,15	0.68	0	17,19,21	1.44	3 (17%)
9	2GR	A	820	6	18,25,25	2.28	6 (33%)	23,33,33	1.27	1 (4%)

In the following table, the Chirals column lists the number of chiral outliers, the number of chiral centers analysed, the number of these observed in the model and the number defined in the Chemical Component Dictionary. Similar counts are reported in the Torsion and Rings columns. '-' means no outliers of that kind were identified.

Mol	Type	Chain	Res	Link	Chirals	Torsions	Rings
5	NAG	A	807	1	-	2/6/23/26	0/1/1/1
5	NAG	A	808	1	-	0/6/23/26	0/1/1/1
9	2GR	A	820	6	-	3/19/26/26	0/1/1/1

All (6) bond length outliers are listed below:

Mol	Chain	Res	Type	Atoms	Z	Observed(Å)	Ideal(Å)
9	A	820	2GR	PAY-N	5.29	1.67	1.61
9	A	820	2GR	PAY-OAD	4.77	1.53	1.46
9	A	820	2GR	CB-CA	3.45	1.57	1.53
9	A	820	2GR	CAW-CAV	3.25	1.57	1.50
9	A	820	2GR	PAY-OAG	-2.49	1.50	1.56
9	A	820	2GR	CAM-NAQ	2.15	1.51	1.46

All (6) bond angle outliers are listed below:

Mol	Chain	Res	Type	Atoms	Z	Observed(°)	Ideal(°)
5	A	807	NAG	C1-O5-C5	7.78	122.73	112.19
9	A	820	2GR	PAY-N-CA	-4.91	112.96	123.83
5	A	808	NAG	C1-O5-C5	3.07	116.35	112.19
5	A	808	NAG	O5-C5-C6	3.02	111.94	107.20
5	A	808	NAG	O5-C1-C2	-2.66	107.08	111.29
5	A	807	NAG	C6-C5-C4	-2.03	108.25	113.00

There are no chirality outliers.

All (5) torsion outliers are listed below:

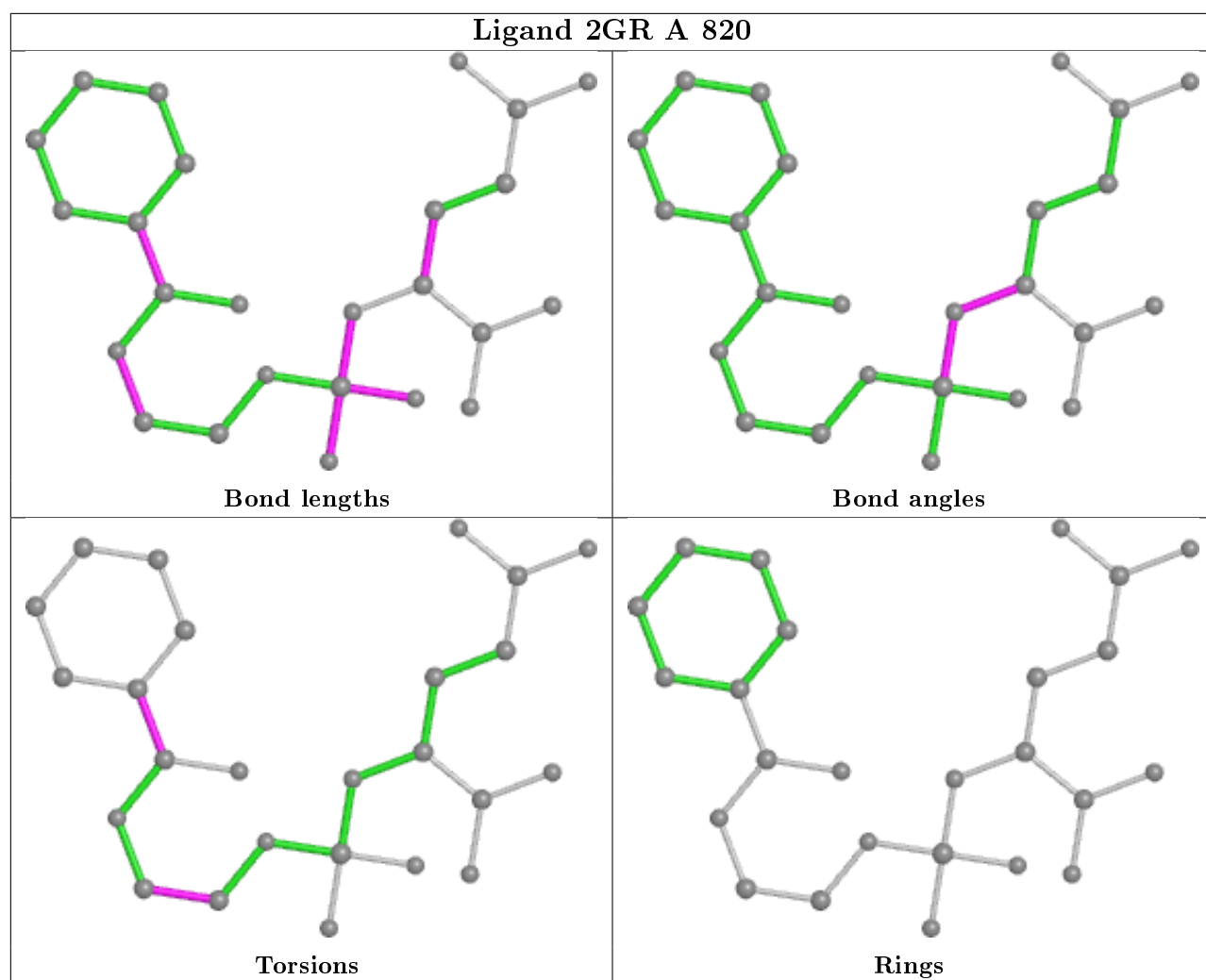
Mol	Chain	Res	Type	Atoms
9	A	820	2GR	NAQ-CAM-CAN-OAS
5	A	807	NAG	C4-C5-C6-O6
5	A	807	NAG	O5-C5-C6-O6
9	A	820	2GR	NAQ-CAV-CAW-CAL
9	A	820	2GR	OAC-CAV-CAW-CAL

There are no ring outliers.

1 monomer is involved in 2 short contacts:

Mol	Chain	Res	Type	Clashes	Symm-Clashes
9	A	820	2GR	2	0

The following is a two-dimensional graphical depiction of Mogul quality analysis of bond lengths, bond angles, torsion angles, and ring geometry for all instances of the Ligand of Interest. In addition, ligands with molecular weight > 250 and outliers as shown on the validation Tables will also be included. For torsion angles, if less than 5% of the Mogul distribution of torsion angles is within 10 degrees of the torsion angle in question, then that torsion angle is considered an outlier. Any bond that is central to one or more torsion angles identified as an outlier by Mogul will be highlighted in the graph. For rings, the root-mean-square deviation (RMSD) between the ring in question and similar rings identified by Mogul is calculated over all ring torsion angles. If the average RMSD is greater than 60 degrees and the minimal RMSD between the ring in question and any Mogul-identified rings is also greater than 60 degrees, then that ring is considered an outlier. The outliers are highlighted in purple. The color gray indicates Mogul did not find sufficient equivalents in the CSD to analyse the geometry.



5.7 Other polymers [i](#)

There are no such residues in this entry.

5.8 Polymer linkage issues [i](#)

There are no chain breaks in this entry.

6 Fit of model and data [i](#)

6.1 Protein, DNA and RNA chains [i](#)

In the following table, the column labelled ‘#RSRZ> 2’ contains the number (and percentage) of RSRZ outliers, followed by percent RSRZ outliers for the chain as percentile scores relative to all X-ray entries and entries of similar resolution. The OWAB column contains the minimum, median, 95th percentile and maximum values of the occupancy-weighted average B-factor per residue. The column labelled ‘Q< 0.9’ lists the number of (and percentage) of residues with an average occupancy less than 0.9.

Mol	Chain	Analysed	<RSRZ>	#RSRZ>2	OWAB(Å ²)	Q<0.9
1	A	687/707 (97%)	-0.10	32 (4%) 31 30	14, 25, 45, 67	1 (0%)

All (32) RSRZ outliers are listed below:

Mol	Chain	Res	Type	RSRZ
1	A	55	LYS	4.5
1	A	505	GLU	4.4
1	A	153	ASN	4.0
1	A	506	PHE	3.9
1	A	656[A]	SER	3.9
1	A	719[A]	VAL	3.7
1	A	507	SER	3.4
1	A	487	GLY	3.4
1	A	336	ASN	3.4
1	A	548	GLY	3.4
1	A	155[A]	SER	3.3
1	A	134	ASP	3.2
1	A	652	ASP	3.2
1	A	135	GLY	3.2
1	A	174[A]	LEU	3.1
1	A	335	GLY	3.0
1	A	154	VAL	2.9
1	A	136	ASN	2.8
1	A	201[A]	VAL	2.6
1	A	226	ILE	2.5
1	A	651[A]	GLN	2.5
1	A	237	PRO	2.4
1	A	283[A]	ILE	2.3
1	A	133	GLU	2.3
1	A	408	GLU	2.3
1	A	227	LEU	2.2
1	A	284	ALA	2.1

Continued on next page...

Continued from previous page...

Mol	Chain	Res	Type	RSRZ
1	A	138	ILE	2.1
1	A	56	HIS	2.1
1	A	124	HIS	2.0
1	A	152	GLU	2.0
1	A	504	PRO	2.0

6.2 Non-standard residues in protein, DNA, RNA chains [i](#)

In the following table, the Atoms column lists the number of modelled atoms in the group and the number defined in the chemical component dictionary. The B-factors column lists the minimum, median, 95th percentile and maximum values of B factors of atoms in the group. The column labelled 'Q< 0.9' lists the number of atoms with occupancy less than 0.9.

Mol	Type	Chain	Res	Atoms	RSCC	RSR	B-factors(Å ²)	Q<0.9
2	NAG	B	2	14/15	0.71	0.24	41,47,53,53	0
2	NAG	C	2	14/15	0.75	0.42	66,70,71,71	0
2	NAG	C	1	14/15	0.76	0.26	44,50,59,61	0
5	NAG	A	807	14/15	0.80	0.23	66,72,74,75	0
5	NAG	A	808	14/15	0.84	0.19	30,49,54,54	0
2	NAG	D	2	14/15	0.84	0.31	52,59,64,66	0
3	NAG	E	2	14/15	0.86	0.18	36,44,51,52	0
2	NAG	D	1	14/15	0.91	0.18	41,45,51,52	0
4	NAG	F	2	14/15	0.91	0.20	30,36,46,47	0
3	NAG	E	1	14/15	0.93	0.08	27,31,37,37	0
4	MAN	F	4	11/12	0.94	0.17	41,45,47,50	0
4	NAG	F	1	14/15	0.94	0.08	21,27,35,43	0
2	NAG	B	1	14/15	0.96	0.11	32,38,46,47	0

6.3 Carbohydrates [i](#)

In the following table, the Atoms column lists the number of modelled atoms in the group and the number defined in the chemical component dictionary. The B-factors column lists the minimum, median, 95th percentile and maximum values of B factors of atoms in the group. The column labelled 'Q< 0.9' lists the number of atoms with occupancy less than 0.9.

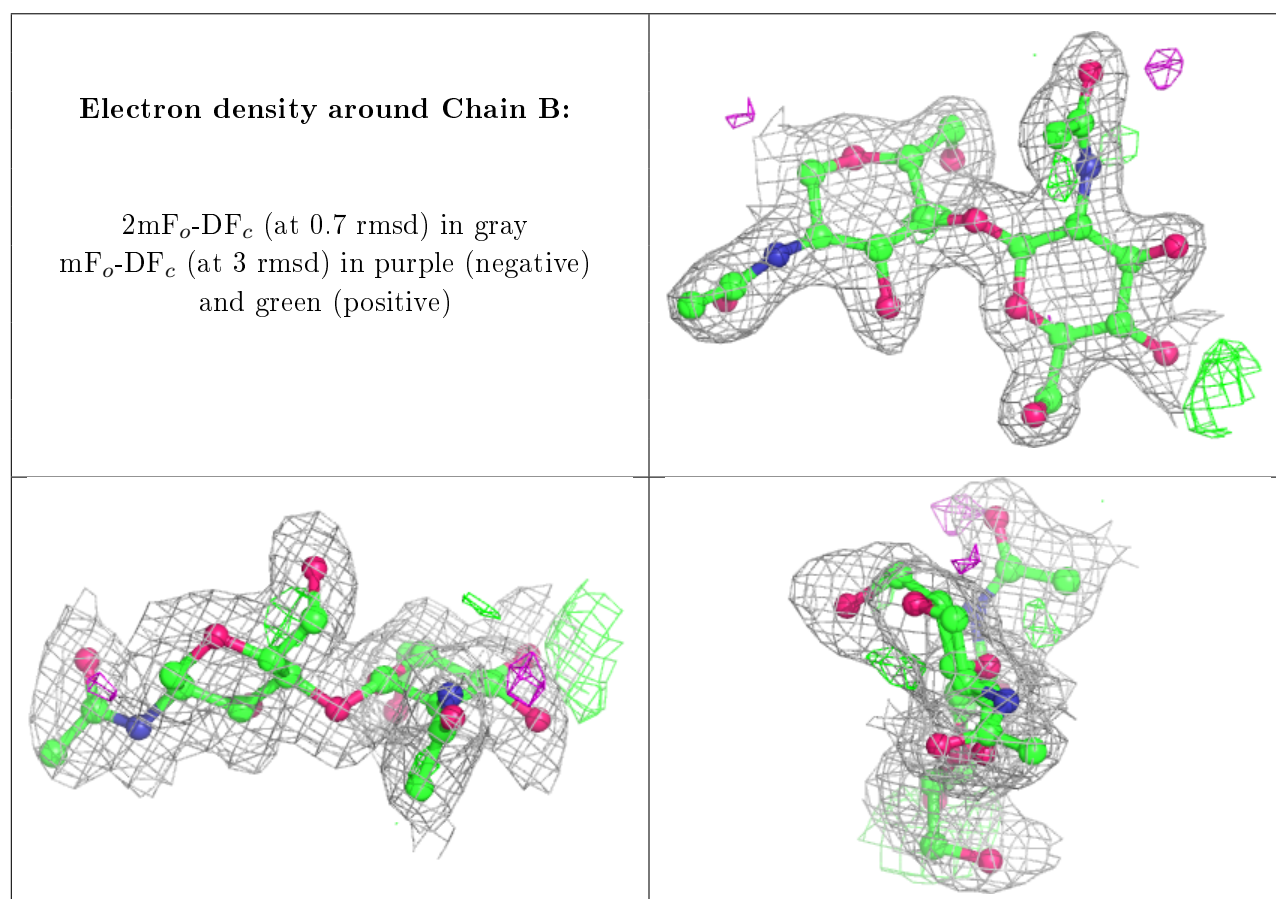
Mol	Type	Chain	Res	Atoms	RSCC	RSR	B-factors(Å ²)	Q<0.9
2	NAG	B	2	14/15	0.71	0.24	41,47,53,53	0
3	BMA	E	3	11/12	0.72	0.31	59,63,67,69	0
2	NAG	C	2	14/15	0.75	0.42	66,70,71,71	0
2	NAG	C	1	14/15	0.76	0.26	44,50,59,61	0
2	NAG	D	2	14/15	0.84	0.31	52,59,64,66	0

Continued on next page...

Continued from previous page...

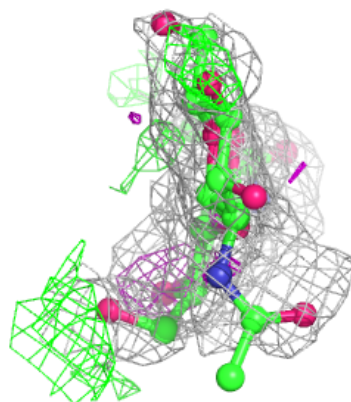
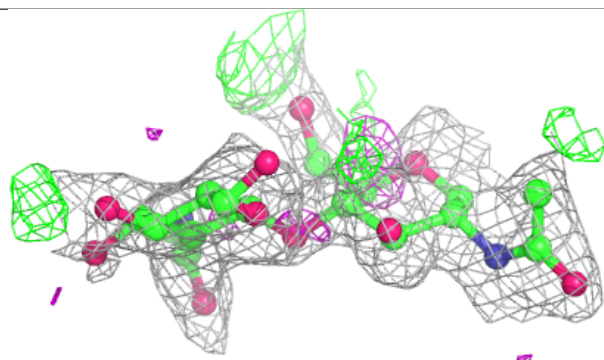
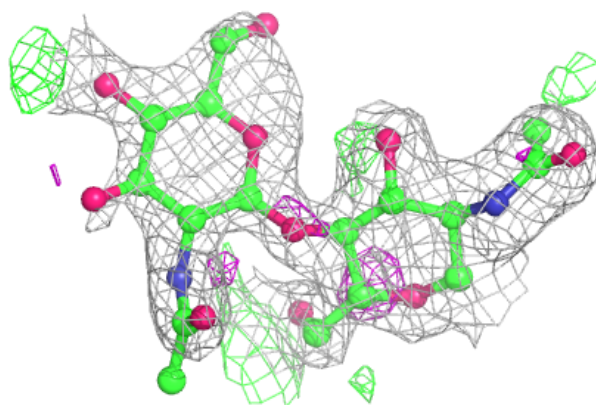
Mol	Type	Chain	Res	Atoms	RSCC	RSR	B-factors(\AA^2)	Q<0.9
3	NAG	E	2	14/15	0.86	0.18	36,44,51,52	0
4	BMA	F	3	11/12	0.90	0.14	34,38,41,42	0
2	NAG	D	1	14/15	0.91	0.18	41,45,51,52	0
4	NAG	F	2	14/15	0.91	0.20	30,36,46,47	0
3	NAG	E	1	14/15	0.93	0.08	27,31,37,37	0
4	MAN	F	4	11/12	0.94	0.17	41,45,47,50	0
4	NAG	F	1	14/15	0.94	0.08	21,27,35,43	0
2	NAG	B	1	14/15	0.96	0.11	32,38,46,47	0

The following is a graphical depiction of the model fit to experimental electron density for oligosaccharide. Each fit is shown from different orientation to approximate a three-dimensional view.

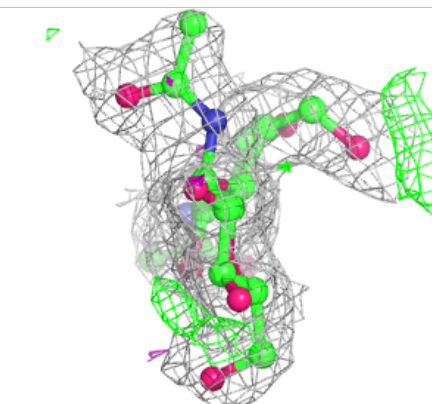
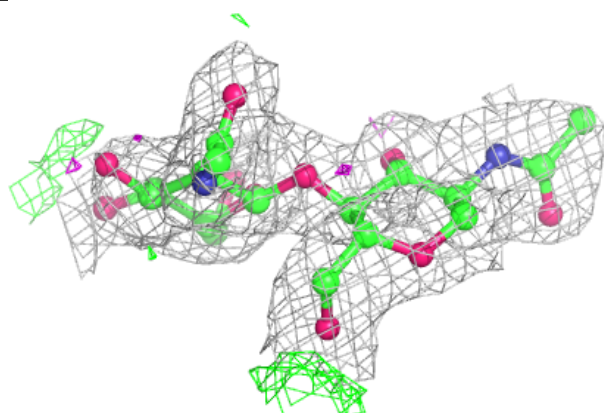
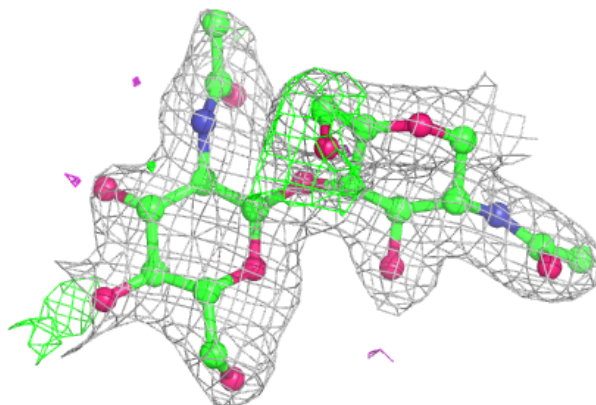


Electron density around Chain C:

$2mF_o-DF_c$ (at 0.7 rmsd) in gray
 mF_o-DF_c (at 3 rmsd) in purple (negative)
and green (positive)

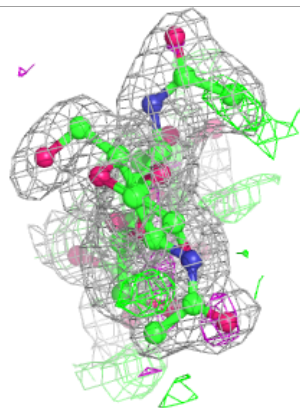
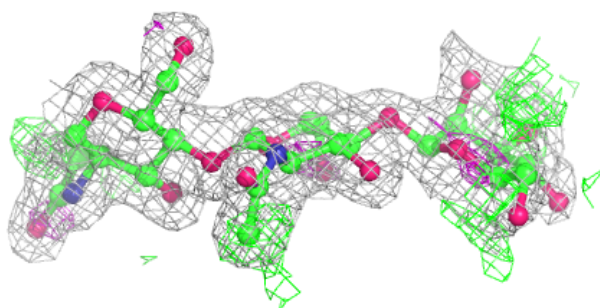
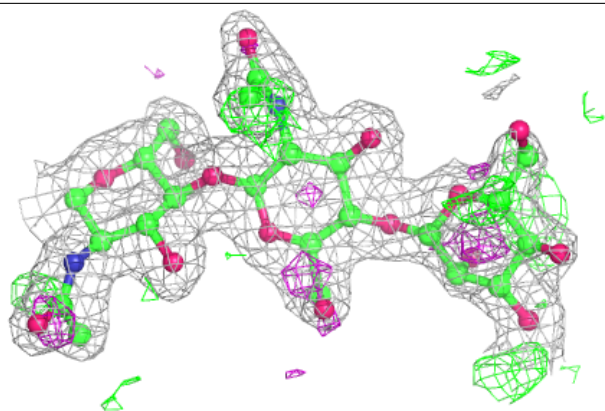
**Electron density around Chain D:**

$2mF_o-DF_c$ (at 0.7 rmsd) in gray
 mF_o-DF_c (at 3 rmsd) in purple (negative)
and green (positive)

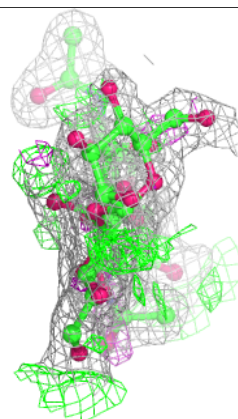
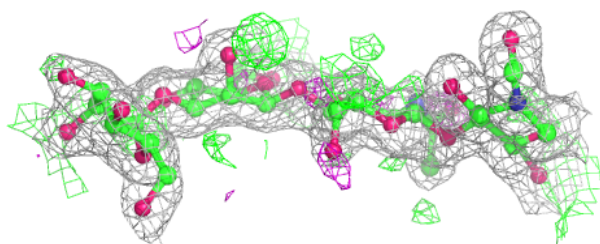
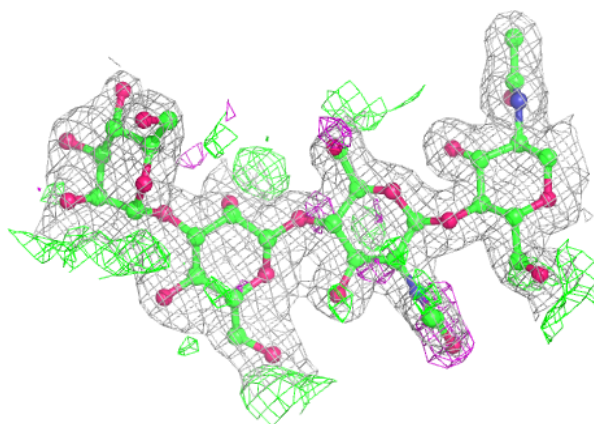


Electron density around Chain E:

$2mF_o-DF_c$ (at 0.7 rmsd) in gray
 mF_o-DF_c (at 3 rmsd) in purple (negative)
and green (positive)

**Electron density around Chain F:**

$2mF_o-DF_c$ (at 0.7 rmsd) in gray
 mF_o-DF_c (at 3 rmsd) in purple (negative)
and green (positive)

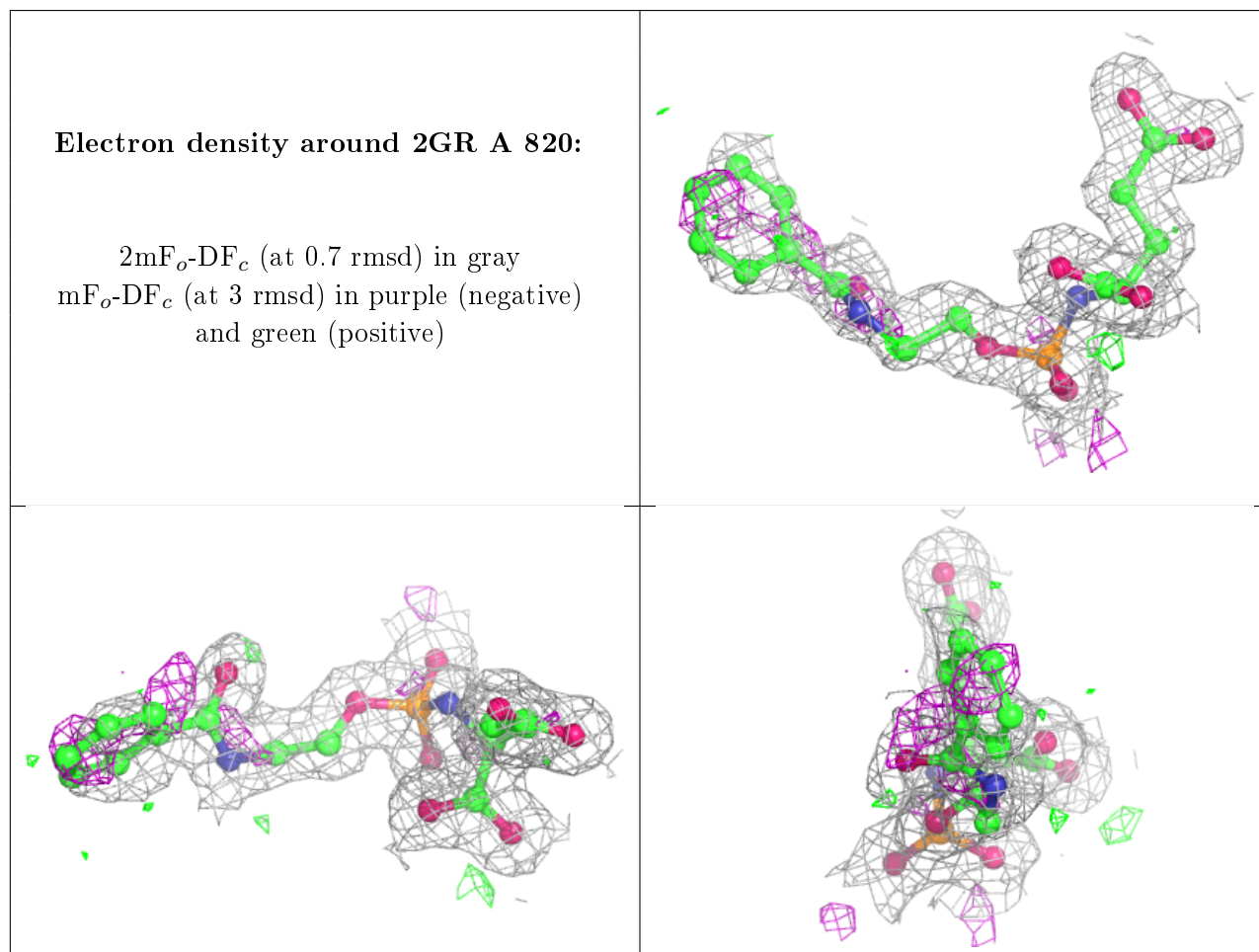


6.4 Ligands [i](#)

In the following table, the Atoms column lists the number of modelled atoms in the group and the number defined in the chemical component dictionary. The B-factors column lists the minimum, median, 95th percentile and maximum values of B factors of atoms in the group. The column labelled 'Q< 0.9' lists the number of atoms with occupancy less than 0.9.

Mol	Type	Chain	Res	Atoms	RSCC	RSR	B-factors(Å ²)	Q<0.9
5	NAG	A	807	14/15	0.80	0.23	66,72,74,75	0
5	NAG	A	808	14/15	0.84	0.19	30,49,54,54	0
9	2GR	A	820	25/25	0.97	0.10	16,18,49,51	0
6	ZN	A	816	1/1	1.00	0.05	19,19,19,19	0
8	CL	A	819	1/1	1.00	0.07	21,21,21,21	0
6	ZN	A	817	1/1	1.00	0.05	19,19,19,19	0
7	CA	A	818	1/1	1.00	0.07	16,16,16,16	0

The following is a graphical depiction of the model fit to experimental electron density of all instances of the Ligand of Interest. In addition, ligands with molecular weight > 250 and outliers as shown on the geometry validation Tables will also be included. Each fit is shown from different orientation to approximate a three-dimensional view.



6.5 Other polymers

There are no such residues in this entry.