



# Full wwPDB X-ray Structure Validation Report ⓘ

Nov 9, 2021 – 07:34 AM EST

PDB ID : 5PB1  
Title : Crystal Structure of Factor VIIa in complex with benzenecarboximidamide  
Authors : Stihle, M.; Mayweg, A.; Roever, S.; Rudolph, M.G.  
Deposited on : 2016-11-10  
Resolution : 1.90 Å(reported)

This is a Full wwPDB X-ray Structure Validation Report for a publicly released PDB entry.

We welcome your comments at [validation@mail.wwpdb.org](mailto:validation@mail.wwpdb.org)

A user guide is available at

<https://www.wwpdb.org/validation/2017/XrayValidationReportHelp>

with specific help available everywhere you see the ⓘ symbol.

---

The following versions of software and data (see [references ⓘ](#)) were used in the production of this report:

MolProbity : 4.02b-467  
Mogul : 1.8.5 (274361), CSD as541be (2020)  
Xtriage (Phenix) : 1.13  
EDS : 2.23.2  
Percentile statistics : 20191225.v01 (using entries in the PDB archive December 25th 2019)  
Refmac : 5.8.0158  
CCP4 : 7.0.044 (Gargrove)  
Ideal geometry (proteins) : Engh & Huber (2001)  
Ideal geometry (DNA, RNA) : Parkinson et al. (1996)  
Validation Pipeline (wwPDB-VP) : 2.23.2

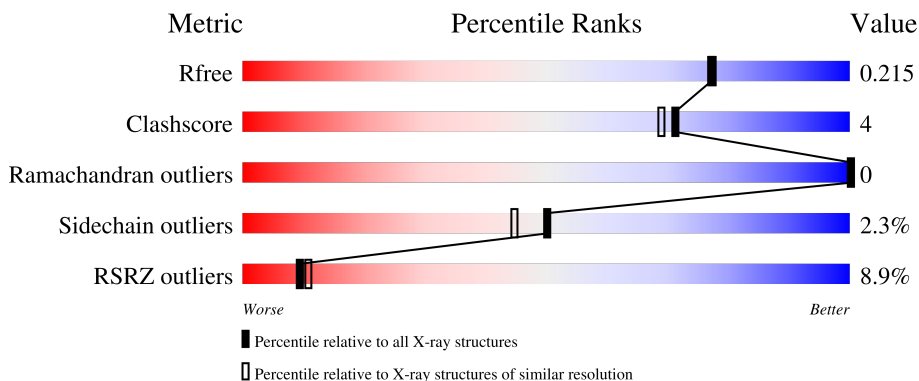
# 1 Overall quality at a glance

The following experimental techniques were used to determine the structure:

*X-RAY DIFFRACTION*

The reported resolution of this entry is 1.90 Å.

Percentile scores (ranging between 0-100) for global validation metrics of the entry are shown in the following graphic. The table shows the number of entries on which the scores are based.



Metric	Whole archive (#Entries)	Similar resolution (#Entries, resolution range(Å))
$R_{free}$	130704	6207 (1.90-1.90)
Clashscore	141614	6847 (1.90-1.90)
Ramachandran outliers	138981	6760 (1.90-1.90)
Sidechain outliers	138945	6760 (1.90-1.90)
RSRZ outliers	127900	6082 (1.90-1.90)

The table below summarises the geometric issues observed across the polymeric chains and their fit to the electron density. The red, orange, yellow and green segments of the lower bar indicate the fraction of residues that contain outliers for  $\geq 3$ , 2, 1 and 0 types of geometric quality criteria respectively. A grey segment represents the fraction of residues that are not modelled. The numeric value for each fraction is indicated below the corresponding segment, with a dot representing fractions  $\leq 5\%$ . The upper red bar (where present) indicates the fraction of residues that have poor fit to the electron density. The numeric value is given above the bar.

Mol	Chain	Length	Quality of chain
1	A	64	
2	D	254	

The following table lists non-polymeric compounds, carbohydrate monomers and non-standard residues in protein, DNA, RNA chains that are outliers for geometric or electron-density-fit criteria:

Mol	Type	Chain	Res	Chirality	Geometry	Clashes	Electron density
3	SO4	A	301	-	-	-	X
3	SO4	D	502	-	-	X	-
3	SO4	D	503	-	-	-	X
3	SO4	D	505	-	-	-	X
4	GOL	A	303	-	-	-	X

## 2 Entry composition [i](#)

There are 7 unique types of molecules in this entry. The entry contains 2917 atoms, of which 0 are hydrogens and 0 are deuteriums.

In the tables below, the ZeroOcc column contains the number of atoms modelled with zero occupancy, the AltConf column contains the number of residues with at least one atom in alternate conformation and the Trace column contains the number of residues modelled with at most 2 atoms.

- Molecule 1 is a protein called Coagulation factor VII light chain.

Mol	Chain	Residues	Atoms					ZeroOcc	AltConf	Trace
			Total	C	N	O	S			
1	A	56	429	262	76	84	7	0	1	0

- Molecule 2 is a protein called Coagulation factor VII heavy chain.

Mol	Chain	Residues	Atoms					ZeroOcc	AltConf	Trace
			Total	C	N	O	S			
2	D	250	2046	1310	361	358	17	0	21	0

- Molecule 3 is SULFATE ION (three-letter code: SO4) (formula: O<sub>4</sub>S).



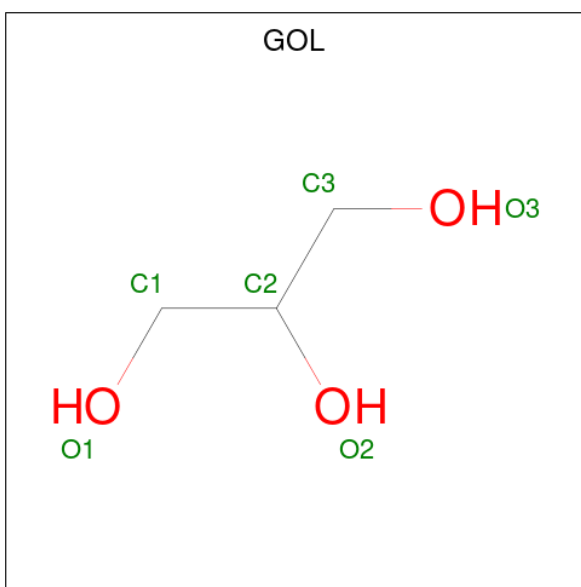
Mol	Chain	Residues	Atoms			ZeroOcc	AltConf
			Total	O	S		
3	A	1	5	4	1	0	0
3	D	1	5	4	1	0	0

*Continued on next page...*

Continued from previous page...

Mol	Chain	Residues	Atoms	ZeroOcc	AltConf
3	D	1	Total O S 5 4 1	0	0
3	D	1	Total O S 5 4 1	0	0
3	D	1	Total O S 5 4 1	0	0
3	D	1	Total O S 5 4 1	0	0

- Molecule 4 is GLYCEROL (three-letter code: GOL) (formula: C<sub>3</sub>H<sub>8</sub>O<sub>3</sub>).

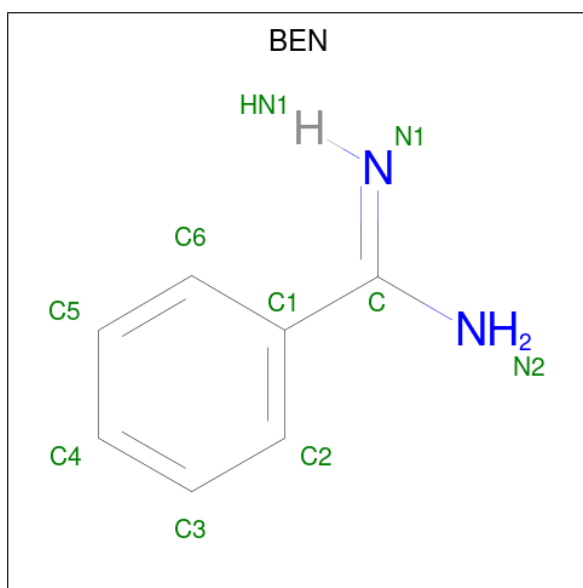


Mol	Chain	Residues	Atoms	ZeroOcc	AltConf
4	A	1	Total C O 6 3 3	0	0
4	A	1	Total C O 6 3 3	0	0
4	D	1	Total C O 6 3 3	0	0
4	D	1	Total C O 6 3 3	0	0

- Molecule 5 is CALCIUM ION (three-letter code: CA) (formula: Ca).

Mol	Chain	Residues	Atoms	ZeroOcc	AltConf
5	D	1	Total Ca 1 1	0	0

- Molecule 6 is BENZAMIDINE (three-letter code: BEN) (formula: C<sub>7</sub>H<sub>8</sub>N<sub>2</sub>).



Mol	Chain	Residues	Atoms	ZeroOcc	AltConf
6	D	1	Total C N 9 7 2	0	0

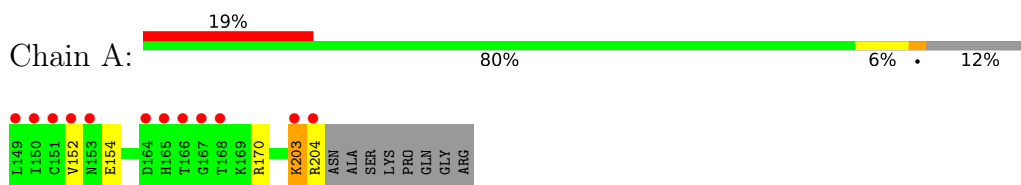
- Molecule 7 is water.

Mol	Chain	Residues	Atoms	ZeroOcc	AltConf
7	A	62	Total O 62 62	0	0
7	D	316	Total O 316 316	0	0

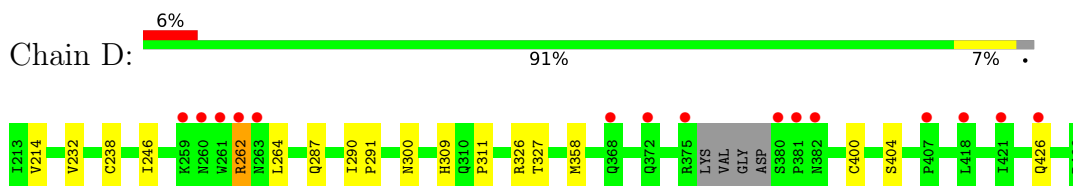
### 3 Residue-property plots [i](#)

These plots are drawn for all protein, RNA, DNA and oligosaccharide chains in the entry. The first graphic for a chain summarises the proportions of the various outlier classes displayed in the second graphic. The second graphic shows the sequence view annotated by issues in geometry and electron density. Residues are color-coded according to the number of geometric quality criteria for which they contain at least one outlier: green = 0, yellow = 1, orange = 2 and red = 3 or more. A red dot above a residue indicates a poor fit to the electron density ( $RSRZ > 2$ ). Stretches of 2 or more consecutive residues without any outlier are shown as a green connector. Residues present in the sample, but not in the model, are shown in grey.

- Molecule 1: Coagulation factor VII light chain



- Molecule 2: Coagulation factor VII heavy chain



## 4 Data and refinement statistics

Property	Value	Source
Space group	P 41 21 2	Depositor
Cell constants a, b, c, $\alpha$ , $\beta$ , $\gamma$	95.68Å 95.68Å 117.96Å 90.00° 90.00° 90.00°	Depositor
Resolution (Å)	30.79 – 1.90 30.26 – 1.80	Depositor EDS
% Data completeness (in resolution range)	98.8 (30.79-1.90) 98.8 (30.26-1.80)	Depositor EDS
$R_{merge}$	0.10	Depositor
$R_{sym}$	(Not available)	Depositor
$\langle I/\sigma(I) \rangle$ <sup>1</sup>	2.70 (at 1.80Å)	Xtrriage
Refinement program	REFMAC 5.2.0019	Depositor
R, $R_{free}$	0.190 , 0.210 0.198 , 0.215	Depositor DCC
$R_{free}$ test set	2576 reflections (5.08%)	wwPDB-VP
Wilson B-factor (Å <sup>2</sup> )	22.6	Xtrriage
Anisotropy	0.357	Xtrriage
Bulk solvent $k_{sol}$ (e/Å <sup>3</sup> ), $B_{sol}$ (Å <sup>2</sup> )	0.39 , 49.5	EDS
L-test for twinning <sup>2</sup>	$\langle  L  \rangle = 0.51$ , $\langle L^2 \rangle = 0.35$	Xtrriage
Estimated twinning fraction	No twinning to report.	Xtrriage
$F_o, F_c$ correlation	0.95	EDS
Total number of atoms	2917	wwPDB-VP
Average B, all atoms (Å <sup>2</sup> )	28.0	wwPDB-VP

Xtrriage's analysis on translational NCS is as follows: *The largest off-origin peak in the Patterson function is 3.53% of the height of the origin peak. No significant pseudotranslation is detected.*

<sup>1</sup>Intensities estimated from amplitudes.

<sup>2</sup>Theoretical values of  $\langle |L| \rangle$ ,  $\langle L^2 \rangle$  for acentric reflections are 0.5, 0.333 respectively for untwinned datasets, and 0.375, 0.2 for perfectly twinned datasets.



## 5 Model quality [i](#)

### 5.1 Standard geometry [i](#)

Bond lengths and bond angles in the following residue types are not validated in this section: CA, GOL, SO4, MHO, BEN

The Z score for a bond length (or angle) is the number of standard deviations the observed value is removed from the expected value. A bond length (or angle) with  $|Z| > 5$  is considered an outlier worth inspection. RMSZ is the root-mean-square of all Z scores of the bond lengths (or angles).

Mol	Chain	Bond lengths		Bond angles	
		RMSZ	# Z  >5	RMSZ	# Z  >5
1	A	0.44	0/439	0.56	0/591
2	D	0.52	0/2146	0.65	0/2918
All	All	0.51	0/2585	0.64	0/3509

There are no bond length outliers.

There are no bond angle outliers.

There are no chirality outliers.

There are no planarity outliers.

### 5.2 Too-close contacts [i](#)

In the following table, the Non-H and H(model) columns list the number of non-hydrogen atoms and hydrogen atoms in the chain respectively. The H(added) column lists the number of hydrogen atoms added and optimized by MolProbity. The Clashes column lists the number of clashes within the asymmetric unit, whereas Symm-Clashes lists symmetry-related clashes.

Mol	Chain	Non-H	H(model)	H(added)	Clashes	Symm-Clashes
1	A	429	0	413	3	0
2	D	2046	0	2085	14	0
3	A	5	0	0	0	0
3	D	25	0	0	2	0
4	A	12	0	16	1	0
4	D	12	0	16	0	0
5	D	1	0	0	0	0
6	D	9	0	7	0	0
7	A	62	0	0	1	1
7	D	316	0	0	4	1
All	All	2917	0	2537	18	1

The all-atom clashscore is defined as the number of clashes found per 1000 atoms (including hydrogen atoms). The all-atom clashscore for this structure is 4.

All (18) close contacts within the same asymmetric unit are listed below, sorted by their clash magnitude.

Atom-1	Atom-2	Interatomic distance (Å)	Clash overlap (Å)
2:D:214:VAL:HG23	2:D:400[B]:CYS:SG	1.90	1.11
4:A:302:GOL:H11	7:D:607:HOH:O	1.70	0.90
2:D:309:HIS:HD2	3:D:502:SO4:O2	1.58	0.84
2:D:327:THR:OG1	7:D:601:HOH:O	2.06	0.72
1:A:152:VAL:HG23	7:A:401:HOH:O	1.97	0.64
2:D:214:VAL:CG2	2:D:400[B]:CYS:SG	2.80	0.62
1:A:203:LYS:O	1:A:204:ARG:HB2	2.03	0.59
2:D:262:ARG:HG3	7:D:863:HOH:O	2.02	0.58
2:D:238[B]:CYS:HB2	2:D:404:SER:O	2.05	0.56
2:D:309:HIS:CD2	3:D:502:SO4:O2	2.49	0.54
2:D:232[B]:VAL:HG22	2:D:264[B]:LEU:HD23	1.95	0.49
2:D:246[B]:ILE:HD11	2:D:311:PRO:HG3	1.93	0.49
2:D:290[A]:ILE:HG23	2:D:291:PRO:HD2	1.97	0.47
2:D:326[B]:ARG:HD2	7:D:824:HOH:O	2.15	0.45
2:D:232[B]:VAL:HG22	2:D:264[B]:LEU:CD2	2.48	0.43
1:A:170:ARG:HD2	1:A:170:ARG:C	2.40	0.42

All (1) symmetry-related close contacts are listed below. The label for Atom-2 includes the symmetry operator and encoded unit-cell translations to be applied.

Atom-1	Atom-2	Interatomic distance (Å)	Clash overlap (Å)
7:A:448:HOH:O	7:D:878:HOH:O[7_555]	2.06	0.14

## 5.3 Torsion angles [\(i\)](#)

### 5.3.1 Protein backbone [\(i\)](#)

In the following table, the Percentiles column shows the percent Ramachandran outliers of the chain as a percentile score with respect to all X-ray entries followed by that with respect to entries of similar resolution.

The Analysed column shows the number of residues for which the backbone conformation was analysed, and the total number of residues.

Mol	Chain	Analysed	Favoured	Allowed	Outliers	Percentiles
1	A	55/64 (86%)	52 (94%)	3 (6%)	0	<b>100</b> <b>100</b>

*Continued on next page...*

Continued from previous page...

Mol	Chain	Analysed	Favoured	Allowed	Outliers	Percentiles	
2	D	266/254 (105%)	258 (97%)	8 (3%)	0	100	100
All	All	321/318 (101%)	310 (97%)	11 (3%)	0	100	100

There are no Ramachandran outliers to report.

### 5.3.2 Protein sidechains [i](#)

In the following table, the Percentiles column shows the percent sidechain outliers of the chain as a percentile score with respect to all X-ray entries followed by that with respect to entries of similar resolution.

The Analysed column shows the number of residues for which the sidechain conformation was analysed, and the total number of residues.

Mol	Chain	Analysed	Rotameric	Outliers	Percentiles	
1	A	50/55 (91%)	48 (96%)	2 (4%)	31	22
2	D	231/215 (107%)	227 (98%)	4 (2%)	60	57
All	All	281/270 (104%)	275 (98%)	6 (2%)	50	48

All (6) residues with a non-rotameric sidechain are listed below:

Mol	Chain	Res	Type
1	A	154	GLU
1	A	203	LYS
2	D	262	ARG
2	D	287	GLN
2	D	300	ASN
2	D	426	GLN

Sometimes sidechains can be flipped to improve hydrogen bonding and reduce clashes. All (4) such sidechains are listed below:

Mol	Chain	Res	Type
2	D	300	ASN
2	D	309	HIS
2	D	361	ASN
2	D	426	GLN

### 5.3.3 RNA [i](#)

There are no RNA molecules in this entry.

## 5.4 Non-standard residues in protein, DNA, RNA chains [i](#)

1 non-standard protein/DNA/RNA residue is modelled in this entry.

In the following table, the Counts columns list the number of bonds (or angles) for which Mogul statistics could be retrieved, the number of bonds (or angles) that are observed in the model and the number of bonds (or angles) that are defined in the Chemical Component Dictionary. The Link column lists molecule types, if any, to which the group is linked. The Z score for a bond length (or angle) is the number of standard deviations the observed value is removed from the expected value. A bond length (or angle) with  $|Z| > 2$  is considered an outlier worth inspection. RMSZ is the root-mean-square of all Z scores of the bond lengths (or angles).

Mol	Type	Chain	Res	Link	Bond lengths			Bond angles		
					Counts	RMSZ	# Z  > 2	Counts	RMSZ	# Z  > 2
2	MHO	D	358	2	7,8,9	1.65	1 (14%)	4,9,11	0.52	0

In the following table, the Chirals column lists the number of chiral outliers, the number of chiral centers analysed, the number of these observed in the model and the number defined in the Chemical Component Dictionary. Similar counts are reported in the Torsion and Rings columns. '-' means no outliers of that kind were identified.

Mol	Type	Chain	Res	Link	Chirals	Torsions	Rings
2	MHO	D	358	2	-	1/6/7/9	-

All (1) bond length outliers are listed below:

Mol	Chain	Res	Type	Atoms	Z	Observed(Å)	Ideal(Å)
2	D	358	MHO	OD1-SD	4.13	1.61	1.50

There are no bond angle outliers.

There are no chirality outliers.

All (1) torsion outliers are listed below:

Mol	Chain	Res	Type	Atoms
2	D	358	MHO	CB-CG-SD-OD1

There are no ring outliers.

No monomer is involved in short contacts.

## 5.5 Carbohydrates [i](#)

There are no monosaccharides in this entry.

## 5.6 Ligand geometry [i](#)

Of 12 ligands modelled in this entry, 1 is monoatomic - leaving 11 for Mogul analysis.

In the following table, the Counts columns list the number of bonds (or angles) for which Mogul statistics could be retrieved, the number of bonds (or angles) that are observed in the model and the number of bonds (or angles) that are defined in the Chemical Component Dictionary. The Link column lists molecule types, if any, to which the group is linked. The Z score for a bond length (or angle) is the number of standard deviations the observed value is removed from the expected value. A bond length (or angle) with  $|Z| > 2$  is considered an outlier worth inspection. RMSZ is the root-mean-square of all Z scores of the bond lengths (or angles).

Mol	Type	Chain	Res	Link	Bond lengths			Bond angles		
					Counts	RMSZ	# Z  > 2	Counts	RMSZ	# Z  > 2
4	GOL	A	303	-	5,5,5	0.59	0	5,5,5	0.46	0
3	SO4	D	505	-	4,4,4	0.15	0	6,6,6	0.14	0
6	BEN	D	508	-	9,9,9	1.17	1 (11%)	7,11,11	0.97	1 (14%)
4	GOL	D	507	-	5,5,5	0.49	0	5,5,5	0.71	0
3	SO4	D	503	-	4,4,4	0.36	0	6,6,6	0.53	0
3	SO4	D	509	-	4,4,4	0.19	0	6,6,6	0.32	0
4	GOL	D	506	-	5,5,5	0.37	0	5,5,5	0.29	0
3	SO4	A	301	-	4,4,4	0.14	0	6,6,6	0.15	0
3	SO4	D	502	-	4,4,4	0.28	0	6,6,6	0.34	0
4	GOL	A	302	-	5,5,5	0.63	0	5,5,5	0.74	0
3	SO4	D	504	-	4,4,4	0.13	0	6,6,6	0.09	0

In the following table, the Chirals column lists the number of chiral outliers, the number of chiral centers analysed, the number of these observed in the model and the number defined in the Chemical Component Dictionary. Similar counts are reported in the Torsion and Rings columns. '-' means no outliers of that kind were identified.

Mol	Type	Chain	Res	Link	Chirals	Torsions	Rings
4	GOL	A	303	-	-	3/4/4/4	-
4	GOL	A	302	-	-	2/4/4/4	-
4	GOL	D	507	-	-	3/4/4/4	-
4	GOL	D	506	-	-	3/4/4/4	-
6	BEN	D	508	-	-	0/4/4/4	0/1/1/1

All (1) bond length outliers are listed below:

Mol	Chain	Res	Type	Atoms	Z	Observed(Å)	Ideal(Å)
6	D	508	BEN	C-N2	-2.56	1.27	1.33

All (1) bond angle outliers are listed below:

Mol	Chain	Res	Type	Atoms	Z	Observed(°)	Ideal(°)
6	D	508	BEN	C1-C-N2	2.54	121.87	118.05

There are no chirality outliers.

All (11) torsion outliers are listed below:

Mol	Chain	Res	Type	Atoms
4	A	303	GOL	O2-C2-C3-O3
4	D	507	GOL	C1-C2-C3-O3
4	A	302	GOL	C1-C2-C3-O3
4	A	303	GOL	C1-C2-C3-O3
4	D	506	GOL	O1-C1-C2-C3
4	A	303	GOL	O1-C1-C2-O2
4	D	506	GOL	O1-C1-C2-O2
4	D	507	GOL	O1-C1-C2-O2
4	A	302	GOL	O2-C2-C3-O3
4	D	507	GOL	O2-C2-C3-O3
4	D	506	GOL	C1-C2-C3-O3

There are no ring outliers.

2 monomers are involved in 3 short contacts:

Mol	Chain	Res	Type	Clashes	Symm-Clashes
3	D	502	SO4	2	0
4	A	302	GOL	1	0

## 5.7 Other polymers [i](#)

There are no such residues in this entry.

## 5.8 Polymer linkage issues [i](#)

There are no chain breaks in this entry.

## 6 Fit of model and data

### 6.1 Protein, DNA and RNA chains

In the following table, the column labelled ‘#RSRZ > 2’ contains the number (and percentage) of RSRZ outliers, followed by percent RSRZ outliers for the chain as percentile scores relative to all X-ray entries and entries of similar resolution. The OWAB column contains the minimum, median, 95<sup>th</sup> percentile and maximum values of the occupancy-weighted average B-factor per residue. The column labelled ‘Q < 0.9’ lists the number of (and percentage) of residues with an average occupancy less than 0.9.

Mol	Chain	Analysed	<RSRZ>	#RSRZ>2	OWAB(Å <sup>2</sup> )	Q<0.9
1	A	56/64 (87%)	1.35	12 (21%) <b>0</b> <b>0</b>	19, 29, 56, 60	0
2	D	249/254 (98%)	0.34	15 (6%) <b>21</b> <b>24</b>	15, 23, 45, 59	0
All	All	305/318 (95%)	0.52	27 (8%) <b>9</b> <b>11</b>	15, 23, 52, 60	0

All (27) RSRZ outliers are listed below:

Mol	Chain	Res	Type	RSRZ
1	A	149	LEU	11.3
2	D	380	SER	11.3
1	A	166	THR	10.3
1	A	168	THR	9.5
2	D	381	PRO	8.6
2	D	375	ARG	7.6
1	A	150	ILE	7.4
1	A	165	HIS	7.3
1	A	167	GLY	6.3
1	A	152	VAL	6.2
1	A	204	ARG	5.6
2	D	260	ASN	4.7
1	A	203	LYS	4.5
2	D	259	LYS	4.4
2	D	372	GLN	4.0
2	D	261	TRP	3.8
2	D	382	ASN	3.7
1	A	153	ASN	3.5
2	D	262	ARG	3.4
2	D	368	GLN	3.2
1	A	151	CYS	3.0
1	A	164	ASP	2.6
2	D	421	ILE	2.5
2	D	418	LEU	2.4

*Continued on next page...*

*Continued from previous page...*

Mol	Chain	Res	Type	RSRZ
2	D	426	GLN	2.4
2	D	263	ASN	2.1
2	D	407	PRO	2.1

## 6.2 Non-standard residues in protein, DNA, RNA chains [i](#)

In the following table, the Atoms column lists the number of modelled atoms in the group and the number defined in the chemical component dictionary. The B-factors column lists the minimum, median, 95<sup>th</sup> percentile and maximum values of B factors of atoms in the group. The column labelled 'Q< 0.9' lists the number of atoms with occupancy less than 0.9.

Mol	Type	Chain	Res	Atoms	RSCC	RSR	B-factors(Å <sup>2</sup> )	Q<0.9
2	MHO	D	358	9/10	0.96	0.11	19,19,22,29	0

## 6.3 Carbohydrates [i](#)

There are no monosaccharides in this entry.

## 6.4 Ligands [i](#)

In the following table, the Atoms column lists the number of modelled atoms in the group and the number defined in the chemical component dictionary. The B-factors column lists the minimum, median, 95<sup>th</sup> percentile and maximum values of B factors of atoms in the group. The column labelled 'Q< 0.9' lists the number of atoms with occupancy less than 0.9.

Mol	Type	Chain	Res	Atoms	RSCC	RSR	B-factors(Å <sup>2</sup> )	Q<0.9
4	GOL	A	303	6/6	0.41	0.43	39,44,45,46	0
3	SO4	D	503	5/5	0.53	0.41	42,46,50,52	0
4	GOL	D	506	6/6	0.55	0.33	73,73,73,74	0
4	GOL	D	507	6/6	0.60	0.37	43,46,50,52	0
3	SO4	A	301	5/5	0.68	0.51	80,80,80,80	0
3	SO4	D	505	5/5	0.73	0.52	80,80,80,80	0
4	GOL	A	302	6/6	0.76	0.34	33,41,42,43	0
3	SO4	D	509	5/5	0.91	0.16	42,43,48,48	0
3	SO4	D	502	5/5	0.95	0.45	40,46,48,49	0
6	BEN	D	508	9/9	0.96	0.10	29,29,30,30	0
3	SO4	D	504	5/5	0.97	0.12	53,53,54,54	0
5	CA	D	501	1/1	0.99	0.05	19,19,19,19	0



## 6.5 Other polymers [i](#)

There are no such residues in this entry.