



Full wwPDB X-ray Structure Validation Report ⓘ

Oct 4, 2023 – 03:39 AM EDT

PDB ID : 6PBK
Title : Archaeum periplasmic stator protein complex FlaF and FlaG from *Sulfolobus acidocaldarius*
Authors : Tsai, C.-L.; Tainer, J.A.
Deposited on : 2019-06-14
Resolution : 2.81 Å (reported)

This is a Full wwPDB X-ray Structure Validation Report for a publicly released PDB entry.

We welcome your comments at validation@mail.wwpdb.org

A user guide is available at

<https://www.wwpdb.org/validation/2017/XrayValidationReportHelp>

with specific help available everywhere you see the ⓘ symbol.

The types of validation reports are described at

<http://www.wwpdb.org/validation/2017/FAQs#types>.

The following versions of software and data (see [references ⓘ](#)) were used in the production of this report:

MolProbity : 4.02b-467
Mogul : 1.8.5 (274361), CSD as541be (2020)
Xtriage (Phenix) : 1.13
EDS : 2.35.1
Percentile statistics : 20191225.v01 (using entries in the PDB archive December 25th 2019)
Refmac : 5.8.0158
CCP4 : 7.0.044 (Gargrove)
Ideal geometry (proteins) : Engh & Huber (2001)
Ideal geometry (DNA, RNA) : Parkinson et al. (1996)
Validation Pipeline (wwPDB-VP) : 2.35.1

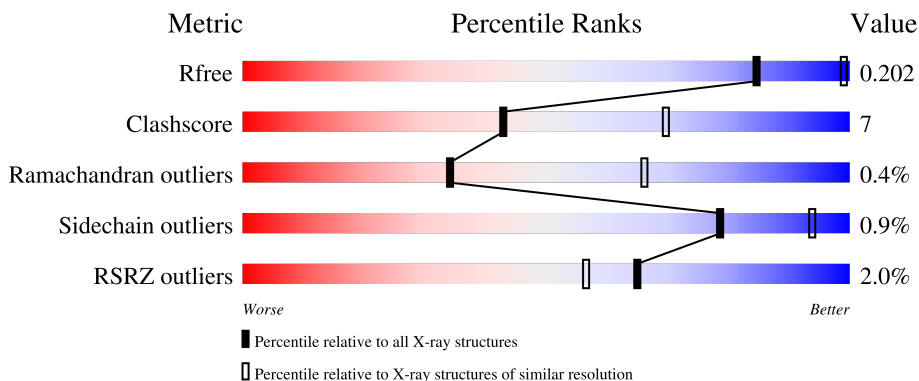
1 Overall quality at a glance

The following experimental techniques were used to determine the structure:

X-RAY DIFFRACTION

The reported resolution of this entry is 2.81 Å.

Percentile scores (ranging between 0-100) for global validation metrics of the entry are shown in the following graphic. The table shows the number of entries on which the scores are based.



Metric	Whole archive (#Entries)	Similar resolution (#Entries, resolution range(Å))
R_{free}	130704	3140 (2.80-2.80)
Clashscore	141614	3569 (2.80-2.80)
Ramachandran outliers	138981	3498 (2.80-2.80)
Sidechain outliers	138945	3500 (2.80-2.80)
RSRZ outliers	127900	3078 (2.80-2.80)

The table below summarises the geometric issues observed across the polymeric chains and their fit to the electron density. The red, orange, yellow and green segments of the lower bar indicate the fraction of residues that contain outliers for ≥ 3 , 2, 1 and 0 types of geometric quality criteria respectively. A grey segment represents the fraction of residues that are not modelled. The numeric value for each fraction is indicated below the corresponding segment, with a dot representing fractions $\leq 5\%$. The upper red bar (where present) indicates the fraction of residues that have poor fit to the electron density. The numeric value is given above the bar.

Mol	Chain	Length	Quality of chain
1	A	135	 4% 72% 13% 11%
1	C	135	 3% 72% 12% 13%
2	B	146	 79% 10% 11%
2	D	146	 76% 13% 11%

The following table lists non-polymeric compounds, carbohydrate monomers and non-standard

residues in protein, DNA, RNA chains that are outliers for geometric or electron-density-fit criteria:

Mol	Type	Chain	Res	Chirality	Geometry	Clashes	Electron density
3	PEG	C	202	-	-	-	X
3	PEG	D	205	-	-	-	X
5	EDO	D	201	-	-	-	X
6	IMD	D	203	-	-	X	-

2 Entry composition i

There are 7 unique types of molecules in this entry. The entry contains 4073 atoms, of which 0 are hydrogens and 0 are deuteriums.

In the tables below, the ZeroOcc column contains the number of atoms modelled with zero occupancy, the AltConf column contains the number of residues with at least one atom in alternate conformation and the Trace column contains the number of residues modelled with at most 2 atoms.

- Molecule 1 is a protein called Saci FlaG soluble domain.

Mol	Chain	Residues	Atoms					ZeroOcc	AltConf	Trace
			Total	C	N	O	S			
1	A	115	908	581	141	183	3	0	1	0
1	C	115	908	581	141	183	3	0	1	0

There are 32 discrepancies between the modelled and reference sequences:

Chain	Residue	Modelled	Actual	Comment	Reference
A	17	MET	-	initiating methionine	UNP Q4J9K7
A	18	GLY	-	expression tag	UNP Q4J9K7
A	19	SER	-	expression tag	UNP Q4J9K7
A	20	SER	-	expression tag	UNP Q4J9K7
A	21	HIS	-	expression tag	UNP Q4J9K7
A	22	HIS	-	expression tag	UNP Q4J9K7
A	23	HIS	-	expression tag	UNP Q4J9K7
A	24	HIS	-	expression tag	UNP Q4J9K7
A	25	HIS	-	expression tag	UNP Q4J9K7
A	26	HIS	-	expression tag	UNP Q4J9K7
A	27	SER	-	expression tag	UNP Q4J9K7
A	28	GLN	-	expression tag	UNP Q4J9K7
A	29	ASP	-	expression tag	UNP Q4J9K7
A	30	PRO	-	expression tag	UNP Q4J9K7
A	31	ASN	-	expression tag	UNP Q4J9K7
A	118	LYS	VAL	engineered mutation	UNP Q4J9K7
C	17	MET	-	initiating methionine	UNP Q4J9K7
C	18	GLY	-	expression tag	UNP Q4J9K7
C	19	SER	-	expression tag	UNP Q4J9K7
C	20	SER	-	expression tag	UNP Q4J9K7
C	21	HIS	-	expression tag	UNP Q4J9K7
C	22	HIS	-	expression tag	UNP Q4J9K7
C	23	HIS	-	expression tag	UNP Q4J9K7
C	24	HIS	-	expression tag	UNP Q4J9K7
C	25	HIS	-	expression tag	UNP Q4J9K7

Continued on next page...

Continued from previous page...

Chain	Residue	Modelled	Actual	Comment	Reference
C	26	HIS	-	expression tag	UNP Q4J9K7
C	27	SER	-	expression tag	UNP Q4J9K7
C	28	GLN	-	expression tag	UNP Q4J9K7
C	29	ASP	-	expression tag	UNP Q4J9K7
C	30	PRO	-	expression tag	UNP Q4J9K7
C	31	ASN	-	expression tag	UNP Q4J9K7
C	118	LYS	VAL	engineered mutation	UNP Q4J9K7

- Molecule 2 is a protein called Conserved flagellar protein F.

Mol	Chain	Residues	Atoms				ZeroOcc	AltConf	Trace
			Total	C	N	O			
2	B	130	Total	C	N	O	0	0	0
			1021	656	161	204			
2	D	130	Total	C	N	O	0	0	0
			1021	656	161	204			

There are 32 discrepancies between the modelled and reference sequences:

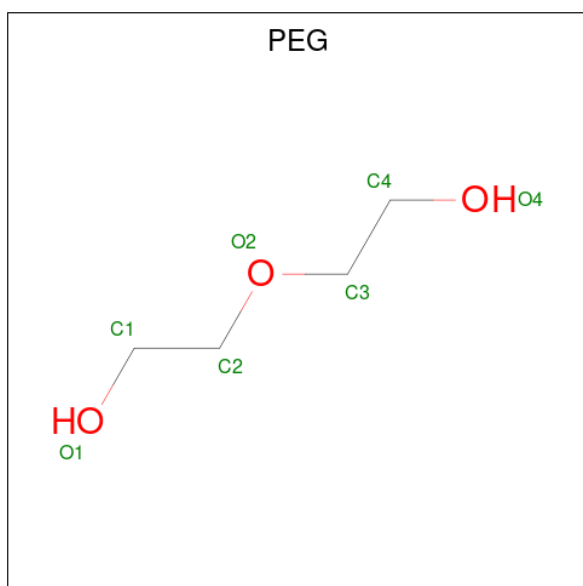
Chain	Residue	Modelled	Actual	Comment	Reference
B	19	MET	-	expression tag	UNP Q4J9K8
B	20	GLY	-	expression tag	UNP Q4J9K8
B	21	SER	-	expression tag	UNP Q4J9K8
B	22	SER	-	expression tag	UNP Q4J9K8
B	23	HIS	-	expression tag	UNP Q4J9K8
B	24	HIS	-	expression tag	UNP Q4J9K8
B	25	HIS	-	expression tag	UNP Q4J9K8
B	26	HIS	-	expression tag	UNP Q4J9K8
B	27	HIS	-	expression tag	UNP Q4J9K8
B	28	HIS	-	expression tag	UNP Q4J9K8
B	29	SER	-	expression tag	UNP Q4J9K8
B	30	GLN	-	expression tag	UNP Q4J9K8
B	31	ASP	-	expression tag	UNP Q4J9K8
B	32	PRO	-	expression tag	UNP Q4J9K8
B	33	ASN	-	expression tag	UNP Q4J9K8
B	34	SER	-	expression tag	UNP Q4J9K8
D	19	MET	-	expression tag	UNP Q4J9K8
D	20	GLY	-	expression tag	UNP Q4J9K8
D	21	SER	-	expression tag	UNP Q4J9K8
D	22	SER	-	expression tag	UNP Q4J9K8
D	23	HIS	-	expression tag	UNP Q4J9K8
D	24	HIS	-	expression tag	UNP Q4J9K8
D	25	HIS	-	expression tag	UNP Q4J9K8

Continued on next page...

Continued from previous page...

Chain	Residue	Modelled	Actual	Comment	Reference
D	26	HIS	-	expression tag	UNP Q4J9K8
D	27	HIS	-	expression tag	UNP Q4J9K8
D	28	HIS	-	expression tag	UNP Q4J9K8
D	29	SER	-	expression tag	UNP Q4J9K8
D	30	GLN	-	expression tag	UNP Q4J9K8
D	31	ASP	-	expression tag	UNP Q4J9K8
D	32	PRO	-	expression tag	UNP Q4J9K8
D	33	ASN	-	expression tag	UNP Q4J9K8
D	34	SER	-	expression tag	UNP Q4J9K8

- Molecule 3 is DI(HYDROXYETHYL)ETHER (three-letter code: PEG) (formula: C₄H₁₀O₃).

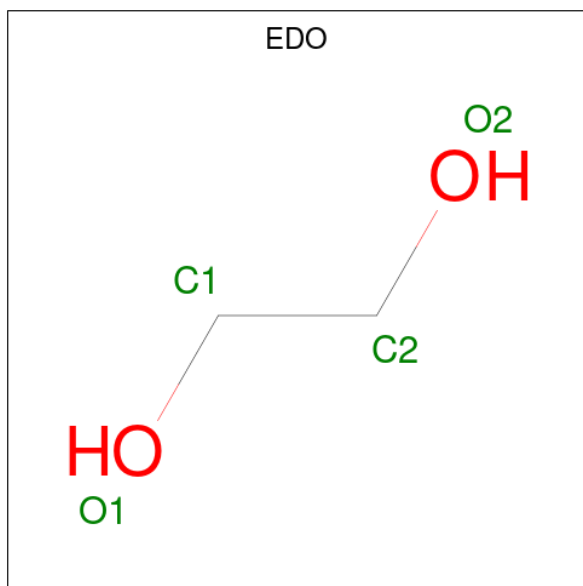


Mol	Chain	Residues	Atoms	ZeroOcc	AltConf
3	A	1	Total C O 7 4 3	0	0
3	A	1	Total C O 7 4 3	0	0
3	B	1	Total C O 7 4 3	0	0
3	C	1	Total C O 7 4 3	0	0
3	C	1	Total C O 7 4 3	0	0
3	D	1	Total C O 7 4 3	0	0

- Molecule 4 is SODIUM ION (three-letter code: NA) (formula: Na).

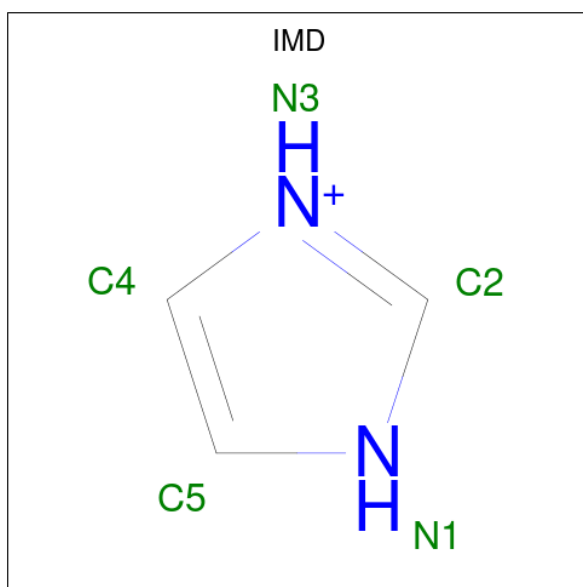
Mol	Chain	Residues	Atoms	ZeroOcc	AltConf
4	A	1	Total Na 1 1	0	0
4	B	1	Total Na 1 1	0	0
4	C	1	Total Na 1 1	0	0

- Molecule 5 is 1,2-ETHANEDIOL (three-letter code: EDO) (formula: C₂H₆O₂).



Mol	Chain	Residues	Atoms	ZeroOcc	AltConf
5	B	1	Total C O 4 2 2	0	0
5	D	1	Total C O 4 2 2	0	0

- Molecule 6 is IMIDAZOLE (three-letter code: IMD) (formula: C₃H₅N₂).



Mol	Chain	Residues	Atoms	ZeroOcc	AltConf
6	D	1	Total C N 5 3 2	0	0
6	D	1	Total C N 5 3 2	0	0
6	D	1	Total C N 5 3 2	0	0

- Molecule 7 is water.

Mol	Chain	Residues	Atoms	ZeroOcc	AltConf
7	A	28	Total O 28 28	0	0
7	B	49	Total O 49 49	0	0
7	C	30	Total O 30 30	0	0
7	D	40	Total O 40 40	0	0

4 Data and refinement statistics

Property	Value	Source
Space group	P 61	Depositor
Cell constants a, b, c, α , β , γ	120.04Å 120.04Å 152.14Å 90.00° 90.00° 120.00°	Depositor
Resolution (Å)	39.29 – 2.81 49.19 – 2.81	Depositor EDS
% Data completeness (in resolution range)	99.8 (39.29-2.81) 99.9 (49.19-2.81)	Depositor EDS
R_{merge}	0.08	Depositor
R_{sym}	(Not available)	Depositor
$\langle I/\sigma(I) \rangle$ ¹	1.65 (at 2.81Å)	Xtrriage
Refinement program	PHENIX (1.11.1_2575: ???)	Depositor
R, R_{free}	0.171 , 0.202 0.172 , 0.202	Depositor DCC
R_{free} test set	1543 reflections (5.08%)	wwPDB-VP
Wilson B-factor (Å ²)	76.3	Xtrriage
Anisotropy	0.218	Xtrriage
Bulk solvent k_{sol} (e/Å ³), B_{sol} (Å ²)	0.31 , 49.5	EDS
L-test for twinning ²	$\langle L \rangle = 0.51$, $\langle L^2 \rangle = 0.34$	Xtrriage
Estimated twinning fraction	0.041 for h,-h-k,-l	Xtrriage
F_o, F_c correlation	0.96	EDS
Total number of atoms	4073	wwPDB-VP
Average B, all atoms (Å ²)	75.0	wwPDB-VP

Xtrriage's analysis on translational NCS is as follows: *The largest off-origin peak in the Patterson function is 3.49% of the height of the origin peak. No significant pseudotranslation is detected.*

¹Intensities estimated from amplitudes.

²Theoretical values of $\langle |L| \rangle$, $\langle L^2 \rangle$ for acentric reflections are 0.5, 0.333 respectively for untwinned datasets, and 0.375, 0.2 for perfectly twinned datasets.

5 Model quality [i](#)

5.1 Standard geometry [i](#)

Bond lengths and bond angles in the following residue types are not validated in this section: IMD, NA, PEG, EDO

The Z score for a bond length (or angle) is the number of standard deviations the observed value is removed from the expected value. A bond length (or angle) with $|Z| > 5$ is considered an outlier worth inspection. RMSZ is the root-mean-square of all Z scores of the bond lengths (or angles).

Mol	Chain	Bond lengths		Bond angles	
		RMSZ	# Z >5	RMSZ	# Z >5
1	A	0.45	0/934	0.67	0/1277
1	C	0.48	0/934	0.68	0/1277
2	B	0.44	0/1047	0.64	0/1443
2	D	0.45	0/1047	0.63	0/1443
All	All	0.45	0/3962	0.65	0/5440

There are no bond length outliers.

There are no bond angle outliers.

There are no chirality outliers.

There are no planarity outliers.

5.2 Too-close contacts [i](#)

In the following table, the Non-H and H(model) columns list the number of non-hydrogen atoms and hydrogen atoms in the chain respectively. The H(added) column lists the number of hydrogen atoms added and optimized by MolProbity. The Clashes column lists the number of clashes within the asymmetric unit, whereas Symm-Clashes lists symmetry-related clashes.

Mol	Chain	Non-H	H(model)	H(added)	Clashes	Symm-Clashes
1	A	908	0	880	13	0
1	C	908	0	880	15	0
2	B	1021	0	996	12	0
2	D	1021	0	996	16	0
3	A	14	0	20	1	0
3	B	7	0	10	0	0
3	C	14	0	20	2	0
3	D	7	0	10	0	0
4	A	1	0	0	0	0

Continued on next page...

Continued from previous page...

Mol	Chain	Non-H	H(model)	H(added)	Clashes	Symm-Clashes
4	B	1	0	0	0	0
4	C	1	0	0	0	0
5	B	4	0	6	0	0
5	D	4	0	6	0	0
6	D	15	0	15	5	0
7	A	28	0	0	1	0
7	B	49	0	0	3	0
7	C	30	0	0	0	0
7	D	40	0	0	2	0
All	All	4073	0	3839	53	0

The all-atom clashscore is defined as the number of clashes found per 1000 atoms (including hydrogen atoms). The all-atom clashscore for this structure is 7.

All (53) close contacts within the same asymmetric unit are listed below, sorted by their clash magnitude.

Atom-1	Atom-2	Interatomic distance (Å)	Clash overlap (Å)
1:C:42:ILE:HG22	1:C:43:GLN:H	1.39	0.85
1:A:42:ILE:HG22	1:A:43:GLN:H	1.43	0.84
1:C:43:GLN:HG3	1:C:45:SER:H	1.48	0.77
1:C:113:LEU:HD13	1:C:119:VAL:HG13	1.68	0.74
1:A:43:GLN:HG3	1:A:45:SER:H	1.52	0.73
1:A:113:LEU:HD13	1:A:119:VAL:HG13	1.73	0.70
1:A:150:MET:SD	7:A:326:HOH:O	2.49	0.70
1:C:120:LYS:NZ	3:C:201:PEG:H12	2.11	0.66
2:D:46:LEU:O	2:D:50:GLU:HG3	1.95	0.65
2:B:46:LEU:O	2:B:50:GLU:HG3	1.96	0.64
1:C:96:VAL:HG12	1:C:106:TRP:HD1	1.65	0.62
2:D:35:ASN:ND2	7:D:301:HOH:O	2.22	0.61
2:B:112:PRO:HG2	2:B:135:ILE:HG12	1.83	0.59
2:B:141:TYR:HE1	2:D:145:GLN:HE22	1.48	0.59
2:D:113:SER:H	6:D:203:IMD:HN3	1.51	0.56
1:C:71:ASN:HB2	1:C:113:LEU:HG	1.88	0.55
2:D:116:TYR:CD2	6:D:203:IMD:H4	2.41	0.55
1:A:81:GLN:OE1	1:A:111:ASN:HB2	2.06	0.55
1:A:84:VAL:HG22	1:A:140:VAL:HB	1.88	0.55
1:A:96:VAL:HG12	1:A:106:TRP:HD1	1.74	0.53
2:D:35:ASN:N	7:D:302:HOH:O	2.42	0.53
2:B:108:LYS:HG3	7:B:332:HOH:O	2.08	0.53
2:B:133:THR:HG23	7:B:303:HOH:O	2.10	0.51
1:C:81:GLN:OE1	1:C:111:ASN:HB3	2.09	0.51

Continued on next page...

Continued from previous page...

Atom-1	Atom-2	Interatomic distance (Å)	Clash overlap (Å)
2:D:84:SER:HB2	2:D:151:VAL:HB	1.91	0.51
1:A:120:LYS:HE3	1:A:122:ILE:HD11	1.91	0.51
2:B:66:ASN:OD1	2:B:133:THR:HG22	2.12	0.50
2:D:56:SER:HB2	2:D:68:VAL:HG12	1.94	0.50
2:B:52:LYS:HG2	2:B:72:ASN:HB2	1.95	0.49
1:C:120:LYS:HZ2	3:C:201:PEG:H12	1.77	0.48
1:C:104:PRO:HA	1:C:124:TYR:O	2.14	0.48
2:D:112:PRO:HA	6:D:203:IMD:HN3	1.79	0.48
1:C:62:SER:OG	1:C:63:ASN:ND2	2.47	0.47
1:C:42:ILE:CG2	1:C:43:GLN:H	2.18	0.46
2:D:131:THR:OG1	6:D:202:IMD:H4	2.15	0.46
1:A:104:PRO:HA	1:A:124:TYR:O	2.17	0.43
2:B:141:TYR:HE1	2:D:145:GLN:NE2	2.15	0.43
2:D:104:TYR:CD2	2:D:115:TYR:HA	2.54	0.43
1:A:42:ILE:HG22	1:A:43:GLN:N	2.24	0.43
1:C:40:TYR:HD1	1:C:40:TYR:HA	1.70	0.43
2:B:91:ALA:HB1	2:B:138:TYR:HB2	2.01	0.42
1:C:81:GLN:HB3	1:C:111:ASN:ND2	2.35	0.42
2:B:56:SER:HB2	2:B:68:VAL:HG12	2.02	0.42
1:A:118:LYS:HD3	1:A:118:LYS:N	2.34	0.41
2:B:141:TYR:CE1	2:D:145:GLN:NE2	2.88	0.41
1:C:42:ILE:O	1:C:43:GLN:HB2	2.20	0.41
2:D:117:TRP:CE3	2:D:132:LEU:HG	2.56	0.41
1:A:71:ASN:HB2	1:A:113:LEU:HG	2.01	0.41
2:D:116:TYR:CG	6:D:203:IMD:H4	2.56	0.41
1:A:120:LYS:NZ	3:A:201:PEG:H12	2.36	0.41
1:C:42:ILE:HD12	1:C:42:ILE:HG23	1.88	0.40
2:B:35:ASN:N	7:B:306:HOH:O	2.54	0.40
2:D:39:GLU:O	2:D:43:GLU:HG2	2.22	0.40

There are no symmetry-related clashes.

5.3 Torsion angles

5.3.1 Protein backbone

In the following table, the Percentiles column shows the percent Ramachandran outliers of the chain as a percentile score with respect to all X-ray entries followed by that with respect to entries of similar resolution.

The Analysed column shows the number of residues for which the backbone conformation was analysed, and the total number of residues.

Mol	Chain	Analysed	Favoured	Allowed	Outliers	Percentiles	
1	A	114/135 (84%)	108 (95%)	5 (4%)	1 (1%)	17	46
1	C	114/135 (84%)	109 (96%)	4 (4%)	1 (1%)	17	46
2	B	128/146 (88%)	125 (98%)	3 (2%)	0	100	100
2	D	128/146 (88%)	124 (97%)	4 (3%)	0	100	100
All	All	484/562 (86%)	466 (96%)	16 (3%)	2 (0%)	34	66

All (2) Ramachandran outliers are listed below:

Mol	Chain	Res	Type
1	A	42	ILE
1	C	42	ILE

5.3.2 Protein sidechains [i](#)

In the following table, the Percentiles column shows the percent sidechain outliers of the chain as a percentile score with respect to all X-ray entries followed by that with respect to entries of similar resolution.

The Analysed column shows the number of residues for which the sidechain conformation was analysed, and the total number of residues.

Mol	Chain	Analysed	Rotameric	Outliers	Percentiles	
1	A	107/125 (86%)	107 (100%)	0	100	100
1	C	107/125 (86%)	104 (97%)	3 (3%)	43	77
2	B	119/134 (89%)	119 (100%)	0	100	100
2	D	119/134 (89%)	118 (99%)	1 (1%)	81	94
All	All	452/518 (87%)	448 (99%)	4 (1%)	78	94

All (4) residues with a non-rotameric sidechain are listed below:

Mol	Chain	Res	Type
1	C	40	TYR
1	C	70	HIS
1	C	132	ASN
2	D	59	SER

Sometimes sidechains can be flipped to improve hydrogen bonding and reduce clashes. All (4) such sidechains are listed below:

Mol	Chain	Res	Type
2	B	143	ASN
1	C	63	ASN
1	C	111	ASN
2	D	145	GLN

5.3.3 RNA [i](#)

There are no RNA molecules in this entry.

5.4 Non-standard residues in protein, DNA, RNA chains [i](#)

There are no non-standard protein/DNA/RNA residues in this entry.

5.5 Carbohydrates [i](#)

There are no monosaccharides in this entry.

5.6 Ligand geometry [i](#)

Of 14 ligands modelled in this entry, 3 are monoatomic - leaving 11 for Mogul analysis.

In the following table, the Counts columns list the number of bonds (or angles) for which Mogul statistics could be retrieved, the number of bonds (or angles) that are observed in the model and the number of bonds (or angles) that are defined in the Chemical Component Dictionary. The Link column lists molecule types, if any, to which the group is linked. The Z score for a bond length (or angle) is the number of standard deviations the observed value is removed from the expected value. A bond length (or angle) with $|Z| > 2$ is considered an outlier worth inspection. RMSZ is the root-mean-square of all Z scores of the bond lengths (or angles).

Mol	Type	Chain	Res	Link	Bond lengths			Bond angles		
					Counts	RMSZ	$\# Z > 2$	Counts	RMSZ	$\# Z > 2$
3	PEG	A	202	4	6,6,6	0.54	0	5,5,5	0.36	0
6	IMD	D	202	-	3,5,5	0.29	0	4,5,5	0.70	0
3	PEG	D	205	-	6,6,6	0.55	0	5,5,5	0.64	0
3	PEG	A	201	-	6,6,6	0.57	0	5,5,5	0.47	0
3	PEG	B	202	-	6,6,6	0.53	0	5,5,5	0.38	0
3	PEG	C	201	-	6,6,6	0.64	0	5,5,5	0.71	0
6	IMD	D	203	-	3,5,5	0.47	0	4,5,5	0.47	0
3	PEG	C	202	-	6,6,6	0.52	0	5,5,5	0.36	0
6	IMD	D	204	-	3,5,5	0.41	0	4,5,5	0.44	0
5	EDO	B	201	-	3,3,3	0.52	0	2,2,2	0.32	0
5	EDO	D	201	-	3,3,3	0.61	0	2,2,2	0.29	0

In the following table, the Chirals column lists the number of chiral outliers, the number of chiral centers analysed, the number of these observed in the model and the number defined in the Chemical Component Dictionary. Similar counts are reported in the Torsion and Rings columns. '-' means no outliers of that kind were identified.

Mol	Type	Chain	Res	Link	Chirals	Torsions	Rings
3	PEG	A	202	4	-	3/4/4/4	-
6	IMD	D	202	-	-	-	0/1/1/1
3	PEG	D	205	-	-	2/4/4/4	-
3	PEG	A	201	-	-	1/4/4/4	-
3	PEG	B	202	-	-	1/4/4/4	-
3	PEG	C	201	-	-	1/4/4/4	-
6	IMD	D	203	-	-	-	0/1/1/1
3	PEG	C	202	-	-	3/4/4/4	-
6	IMD	D	204	-	-	-	0/1/1/1
5	EDO	B	201	-	-	0/1/1/1	-
5	EDO	D	201	-	-	1/1/1/1	-

There are no bond length outliers.

There are no bond angle outliers.

There are no chirality outliers.

All (12) torsion outliers are listed below:

Mol	Chain	Res	Type	Atoms
3	D	205	PEG	C1-C2-O2-C3
3	C	202	PEG	O2-C3-C4-O4
3	B	202	PEG	O2-C3-C4-O4
3	A	202	PEG	O1-C1-C2-O2
3	A	202	PEG	O2-C3-C4-O4
5	D	201	EDO	O1-C1-C2-O2
3	C	202	PEG	O1-C1-C2-O2
3	D	205	PEG	C4-C3-O2-C2
3	A	201	PEG	C4-C3-O2-C2
3	C	201	PEG	O1-C1-C2-O2
3	C	202	PEG	C4-C3-O2-C2
3	A	202	PEG	C4-C3-O2-C2

There are no ring outliers.

4 monomers are involved in 8 short contacts:

Mol	Chain	Res	Type	Clashes	Symm-Clashes
6	D	202	IMD	1	0

Continued on next page...

Continued from previous page...

Mol	Chain	Res	Type	Clashes	Symm-Clashes
3	A	201	PEG	1	0
3	C	201	PEG	2	0
6	D	203	IMD	4	0

5.7 Other polymers [i](#)

There are no such residues in this entry.

5.8 Polymer linkage issues [i](#)

There are no chain breaks in this entry.

6 Fit of model and data [i](#)

6.1 Protein, DNA and RNA chains [i](#)

In the following table, the column labelled ‘#RSRZ > 2’ contains the number (and percentage) of RSRZ outliers, followed by percent RSRZ outliers for the chain as percentile scores relative to all X-ray entries and entries of similar resolution. The OWAB column contains the minimum, median, 95th percentile and maximum values of the occupancy-weighted average B-factor per residue. The column labelled ‘Q < 0.9’ lists the number of (and percentage) of residues with an average occupancy less than 0.9.

Mol	Chain	Analysed	<RSRZ>	#RSRZ>2	OWAB(Å ²)	Q<0.9
1	A	115/135 (85%)	-0.18	6 (5%) 27 18	59, 74, 106, 121	0
1	C	115/135 (85%)	-0.21	4 (3%) 44 34	59, 75, 106, 127	0
2	B	130/146 (89%)	-0.44	0 100 100	61, 74, 90, 107	0
2	D	130/146 (89%)	-0.48	0 100 100	58, 69, 89, 114	0
All	All	490/562 (87%)	-0.33	10 (2%) 65 56	58, 74, 100, 127	0

All (10) RSRZ outliers are listed below:

Mol	Chain	Res	Type	RSRZ
1	A	40	TYR	5.8
1	A	38	SER	4.6
1	C	40	TYR	4.3
1	A	39	SER	3.4
1	A	41	SER	3.0
1	A	37	MET	2.9
1	C	37	MET	2.9
1	C	39	SER	2.9
1	A	42	ILE	2.6
1	C	38	SER	2.2

6.2 Non-standard residues in protein, DNA, RNA chains [i](#)

There are no non-standard protein/DNA/RNA residues in this entry.

6.3 Carbohydrates [i](#)

There are no monosaccharides in this entry.

6.4 Ligands [i](#)

In the following table, the Atoms column lists the number of modelled atoms in the group and the number defined in the chemical component dictionary. The B-factors column lists the minimum, median, 95th percentile and maximum values of B factors of atoms in the group. The column labelled 'Q<0.9' lists the number of atoms with occupancy less than 0.9.

Mol	Type	Chain	Res	Atoms	RSCC	RSR	B-factors(Å ²)	Q<0.9
3	PEG	D	205	7/7	0.54	0.57	91,94,98,99	0
3	PEG	C	202	7/7	0.73	1.13	94,99,103,104	0
5	EDO	D	201	4/4	0.76	0.60	84,86,91,91	0
3	PEG	C	201	7/7	0.84	0.21	57,80,91,94	0
3	PEG	B	202	7/7	0.86	0.60	80,84,90,100	0
3	PEG	A	202	7/7	0.87	0.84	86,93,98,99	0
3	PEG	A	201	7/7	0.87	0.28	57,80,89,90	0
6	IMD	D	202	5/5	0.91	0.52	72,83,85,92	0
5	EDO	B	201	4/4	0.93	0.28	91,93,98,107	0
6	IMD	D	204	5/5	0.94	0.34	100,103,114,116	0
6	IMD	D	203	5/5	0.95	0.31	84,88,103,104	0
4	NA	A	203	1/1	0.96	0.07	78,78,78,78	0
4	NA	C	203	1/1	0.97	0.21	74,74,74,74	0
4	NA	B	203	1/1	0.99	0.39	51,51,51,51	0

6.5 Other polymers [i](#)

There are no such residues in this entry.