



Full wwPDB EM Validation Report ⓘ

Feb 24, 2024 – 07:46 am GMT

PDB ID : 8PBL
EMDB ID : EMD-17586
Title : E. coli RNA polymerase elongation complex stalled at thymine dimer lesion
Authors : Woodgate, J.; Zenkin, N.
Deposited on : 2023-06-09
Resolution : 2.87 Å (reported)
Based on initial models : 8FVR, 1SL2

This is a Full wwPDB EM Validation Report for a publicly released PDB entry.

We welcome your comments at validation@mail.wwpdb.org

A user guide is available at

<https://www.wwpdb.org/validation/2017/EMValidationReportHelp>

with specific help available everywhere you see the ⓘ symbol.

The types of validation reports are described at

<http://www.wwpdb.org/validation/2017/FAQs#types>.

The following versions of software and data (see [references ⓘ](#)) were used in the production of this report:

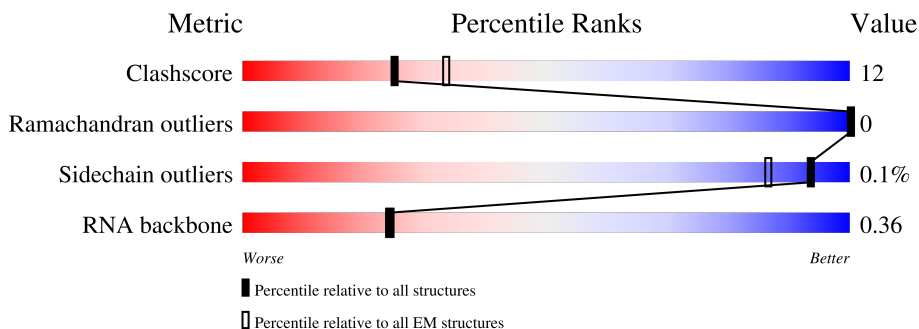
EMDB validation analysis : 0.0.1.dev70
Mogul : 1.8.4, CSD as541be (2020)
MolProbity : 4.02b-467
Percentile statistics : 20191225.v01 (using entries in the PDB archive December 25th 2019)
MapQ : 1.9.13
Ideal geometry (proteins) : Engh & Huber (2001)
Ideal geometry (DNA, RNA) : Parkinson et al. (1996)
Validation Pipeline (wwPDB-VP) : 2.36

1 Overall quality at a glance

The following experimental techniques were used to determine the structure:
ELECTRON MICROSCOPY

The reported resolution of this entry is 2.87 Å.

Percentile scores (ranging between 0-100) for global validation metrics of the entry are shown in the following graphic. The table shows the number of entries on which the scores are based.



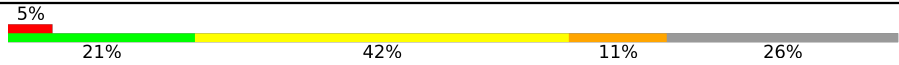
Metric	Whole archive (#Entries)	EM structures (#Entries)
Clashscore	158937	4297
Ramachandran outliers	154571	4023
Sidechain outliers	154315	3826
RNA backbone	4643	859

The table below summarises the geometric issues observed across the polymeric chains and their fit to the map. The red, orange, yellow and green segments of the bar indicate the fraction of residues that contain outliers for ≥ 3 , 2, 1 and 0 types of geometric quality criteria respectively. A grey segment represents the fraction of residues that are not modelled. The numeric value for each fraction is indicated below the corresponding segment, with a dot representing fractions $\leq 5\%$. The upper red bar (where present) indicates the fraction of residues that have poor fit to the EM map (all-atom inclusion $< 40\%$). The numeric value is given above the bar.

Mol	Chain	Length	Quality of chain
1	A	49	
2	B	49	
3	D	239	
3	E	239	
4	F	1342	
5	G	1407	
6	H	91	

Continued on next page...

Continued from previous page...

Mol	Chain	Length	Quality of chain
7	R	19	 <p>5% 21% 42% 11% 26%</p>

2 Entry composition i

There are 9 unique types of molecules in this entry. The entry contains 26261 atoms, of which 0 are hydrogens and 0 are deuteriums.

In the tables below, the AltConf column contains the number of residues with at least one atom in alternate conformation and the Trace column contains the number of residues modelled with at most 2 atoms.

- Molecule 1 is a DNA chain called Non-template DNA.

Mol	Chain	Residues	Atoms					AltConf	Trace
			Total	C	N	O	P		
1	A	27	557	264	111	156	26	0	0

- Molecule 2 is a DNA chain called Template DNA.

Mol	Chain	Residues	Atoms					AltConf	Trace
			Total	C	N	O	P		
2	B	27	563	270	96	170	27	0	0

- Molecule 3 is a protein called DNA-directed RNA polymerase subunit alpha.

Mol	Chain	Residues	Atoms					AltConf	Trace
			Total	C	N	O	S		
3	D	229	1779	1108	316	349	6	0	0
3	E	220	1695	1057	299	333	6	0	0

There are 8 discrepancies between the modelled and reference sequences:

Chain	Residue	Modelled	Actual	Comment	Reference
D	236	VAL	-	expression tag	UNP A0A5B9AW69
D	237	LEU	-	expression tag	UNP A0A5B9AW69
D	238	PHE	-	expression tag	UNP A0A5B9AW69
D	239	GLN	-	expression tag	UNP A0A5B9AW69
E	236	VAL	-	expression tag	UNP A0A5B9AW69
E	237	LEU	-	expression tag	UNP A0A5B9AW69
E	238	PHE	-	expression tag	UNP A0A5B9AW69
E	239	GLN	-	expression tag	UNP A0A5B9AW69

- Molecule 4 is a protein called DNA-directed RNA polymerase subunit beta.

Mol	Chain	Residues	Atoms					AltConf	Trace
			Total	C	N	O	S		
4	F	1319	10427	6544	1820	2019	44	3	0

- Molecule 5 is a protein called DNA-directed RNA polymerase subunit beta'.

Mol	Chain	Residues	Atoms					AltConf	Trace
			Total	C	N	O	S		
5	G	1330	10352	6506	1846	1950	50	0	0

- Molecule 6 is a protein called DNA-directed RNA polymerase subunit omega.

Mol	Chain	Residues	Atoms					AltConf	Trace
			Total	C	N	O	S		
6	H	73	582	355	111	115	1	0	0

- Molecule 7 is a RNA chain called mRNA.

Mol	Chain	Residues	Atoms					AltConf	Trace
			Total	C	N	O	P		
7	R	14	303	135	57	97	14	0	0

- Molecule 8 is ZINC ION (three-letter code: ZN) (formula: Zn).

Mol	Chain	Residues	Atoms		AltConf
			Total	Zn	
8	G	2	2	2	0


- Molecule 9 is MAGNESIUM ION (three-letter code: MG) (formula: Mg).

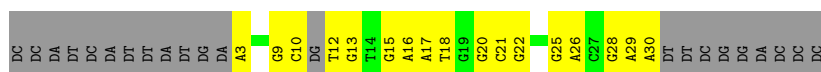
Mol	Chain	Residues	Atoms		AltConf
			Total	Mg	
9	R	1	1	1	0

3 Residue-property plots [i](#)


These plots are drawn for all protein, RNA, DNA and oligosaccharide chains in the entry. The first graphic for a chain summarises the proportions of the various outlier classes displayed in the second graphic. The second graphic shows the sequence view annotated by issues in geometry and atom inclusion in map density. Residues are color-coded according to the number of geometric quality criteria for which they contain at least one outlier: green = 0, yellow = 1, orange = 2 and red = 3 or more. A red diamond above a residue indicates a poor fit to the EM map for this residue (all-atom inclusion < 40%). Stretches of 2 or more consecutive residues without any outlier are shown as a green connector. Residues present in the sample, but not in the model, are shown in grey.

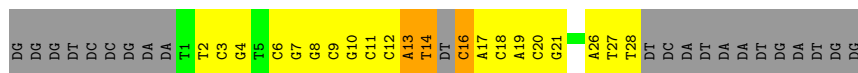
- Molecule 1: Non-template DNA

Chain A: 




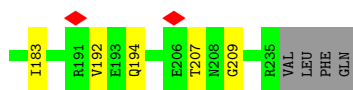
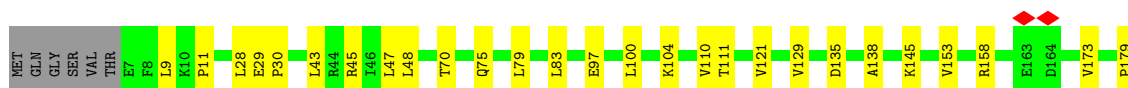
- Molecule 2: Template DNA

Chain B: 




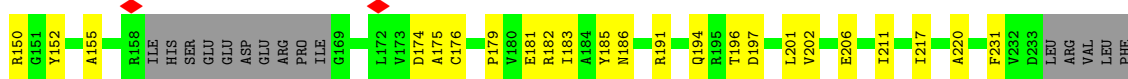
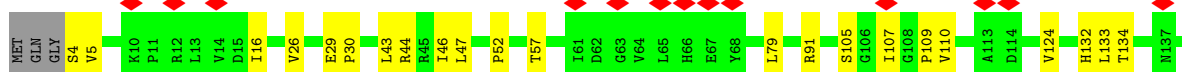
- Molecule 3: DNA-directed RNA polymerase subunit alpha

Chain D: 



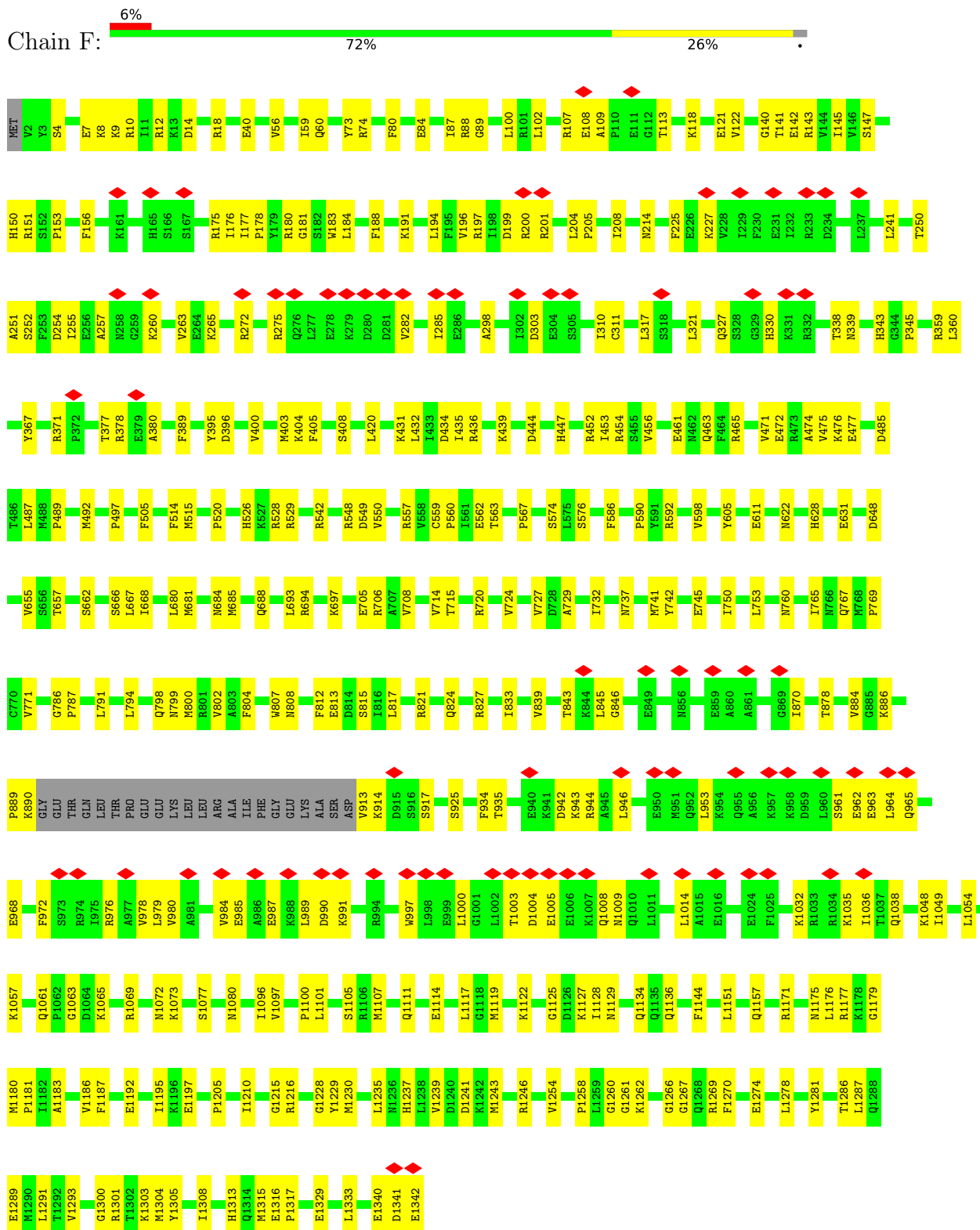
- Molecule 3: DNA-directed RNA polymerase subunit alpha

Chain E: 



GLN

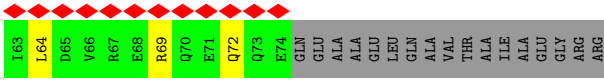
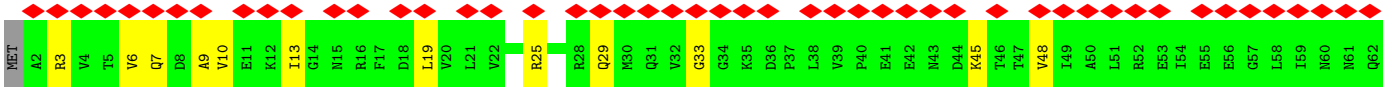
Molecule 4: DNA-directed RNA polymerase subunit beta



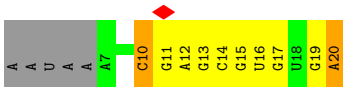
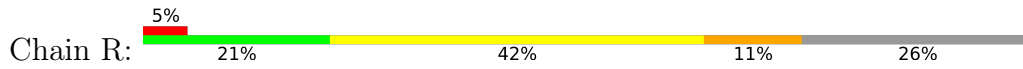
Molecule 5: DNA-directed RNA polymerase subunit beta'

PRO
GLN
VAL
THR
ALA
GLU
ASP
ALA
SER
SER
SER
SER
LEU
ALA
GLU
LEU
LEU
ASN
ALA
ALA
GLY
LEU
LEU
GLY
GLY
SER
SER
ASP
ASN
GLU

• Molecule 6: DNA-directed RNA polymerase subunit omega



• Molecule 7: mRNA



4 Experimental information

Property	Value	Source
EM reconstruction method	SINGLE PARTICLE	Depositor
Imposed symmetry	POINT, C1	Depositor
Number of particles used	131098	Depositor
Resolution determination method	FSC 0.143 CUT-OFF	Depositor
CTF correction method	PHASE FLIPPING AND AMPLITUDE CORRECTION	Depositor
Microscope	TFS GLACIOS	Depositor
Voltage (kV)	200	Depositor
Electron dose ($e^-/\text{\AA}^2$)	50	Depositor
Minimum defocus (nm)	800	Depositor
Maximum defocus (nm)	2000	Depositor
Magnification	240000	Depositor
Image detector	FEI FALCON IV (4k x 4k)	Depositor
Maximum map value	0.026	Depositor
Minimum map value	-0.016	Depositor
Average map value	0.000	Depositor
Map value standard deviation	0.000	Depositor
Recommended contour level	0.00102	Depositor
Map size (Å)	287.0, 287.0, 287.0	wwPDB
Map dimensions	500, 500, 500	wwPDB
Map angles (°)	90.0, 90.0, 90.0	wwPDB
Pixel spacing (Å)	0.574, 0.574, 0.574	Depositor

5 Model quality i

5.1 Standard geometry i

Bond lengths and bond angles in the following residue types are not validated in this section: MG, ZN, TTD

The Z score for a bond length (or angle) is the number of standard deviations the observed value is removed from the expected value. A bond length (or angle) with $|Z| > 5$ is considered an outlier worth inspection. RMSZ is the root-mean-square of all Z scores of the bond lengths (or angles).

Mol	Chain	Bond lengths		Bond angles	
		RMSZ	# Z >5	RMSZ	# Z >5
1	A	0.51	0/626	0.85	0/963
2	B	0.99	4/583 (0.7%)	1.26	6/894 (0.7%)
3	D	0.25	0/1801	0.51	0/2440
3	E	0.25	0/1714	0.51	0/2322
4	F	0.27	0/10602	0.50	0/14303
5	G	0.26	0/10508	0.51	0/14185
6	H	0.23	0/584	0.49	0/786
7	R	0.27	0/339	0.80	0/527
All	All	0.30	4/26757 (0.0%)	0.55	6/36420 (0.0%)

Chiral center outliers are detected by calculating the chiral volume of a chiral center and verifying if the center is modelled as a planar moiety or with the opposite hand. A planarity outlier is detected by checking planarity of atoms in a peptide group, atoms in a mainchain group or atoms of a sidechain that are expected to be planar.

Mol	Chain	#Chirality outliers	#Planarity outliers
5	G	0	1

All (4) bond length outliers are listed below:

Mol	Chain	Res	Type	Atoms	Z	Observed(Å)	Ideal(Å)
2	B	13	DA	C5'-C4'	11.52	1.64	1.51
2	B	13	DA	O4'-C1'	11.28	1.55	1.42
2	B	13	DA	C3'-C2'	7.42	1.61	1.52
2	B	16	DC	P-O5'	7.26	1.67	1.59

All (6) bond angle outliers are listed below:

Mol	Chain	Res	Type	Atoms	Z	Observed(°)	Ideal(°)
2	B	13	DA	C5'-C4'-C3'	-17.65	82.32	114.10

Continued on next page...

Continued from previous page...

Mol	Chain	Res	Type	Atoms	Z	Observed($^{\circ}$)	Ideal($^{\circ}$)
2	B	13	DA	C1'-O4'-C4'	-9.63	100.47	110.10
2	B	13	DA	O4'-C4'-C3'	8.56	111.14	106.00
2	B	13	DA	C4'-C3'-O3'	7.22	127.76	109.70
2	B	13	DA	C5'-C4'-O4'	-5.82	98.24	109.30
2	B	13	DA	C4'-C3'-C2'	-5.70	97.97	103.10

There are no chirality outliers.

All (1) planarity outliers are listed below:

Mol	Chain	Res	Type	Group
5	G	901	ARG	Sidechain

5.2 Too-close contacts [i](#)

In the following table, the Non-H and H(model) columns list the number of non-hydrogen atoms and hydrogen atoms in the chain respectively. The H(added) column lists the number of hydrogen atoms added and optimized by MolProbity. The Clashes column lists the number of clashes within the asymmetric unit, whereas Symm-Clashes lists symmetry-related clashes.

Mol	Chain	Non-H	H(model)	H(added)	Clashes	Symm-Clashes
1	A	557	0	304	21	0
2	B	563	0	318	30	0
3	D	1779	0	1806	23	0
3	E	1695	0	1726	35	0
4	F	10427	0	10455	258	0
5	G	10352	0	10575	295	0
6	H	582	0	593	10	0
7	R	303	0	152	8	0
8	G	2	0	0	0	0
9	R	1	0	0	0	0
All	All	26261	0	25929	606	0

The all-atom clashscore is defined as the number of clashes found per 1000 atoms (including hydrogen atoms). The all-atom clashscore for this structure is 12.

All (606) close contacts within the same asymmetric unit are listed below, sorted by their clash magnitude.

Atom-1	Atom-2	Interatomic distance (Å)	Clash overlap (Å)
3:E:47:LEU:HD12	3:E:183:ILE:CD1	1.54	1.35

Continued on next page...

Continued from previous page...

Atom-1	Atom-2	Interatomic distance (Å)	Clash overlap (Å)
3:E:47:LEU:CD1	3:E:183:ILE:HD12	1.67	1.24
4:F:1333:LEU:HD21	5:G:115:TRP:CH2	1.76	1.19
3:D:43:LEU:O	3:D:47:LEU:HD13	1.47	1.13
3:E:47:LEU:CD1	3:E:183:ILE:CD1	2.26	1.13
3:E:47:LEU:HD13	3:E:183:ILE:HD12	1.35	1.09
5:G:701:LEU:CD2	5:G:723:TYR:HB2	1.83	1.08
5:G:701:LEU:HD21	5:G:723:TYR:HB2	1.32	1.05
4:F:184:LEU:HD12	4:F:184:LEU:O	1.64	0.96
3:E:47:LEU:HD12	3:E:183:ILE:HD11	1.46	0.94
4:F:1333:LEU:CD2	5:G:115:TRP:CH2	2.57	0.86
2:B:14:TTD:H1'	2:B:14:TTD:H5R1	1.57	0.85
1:A:15:DG:H22	4:F:199:ASP:HB3	1.42	0.84
5:G:701:LEU:HD21	5:G:723:TYR:CB	2.11	0.80
3:D:43:LEU:O	3:D:47:LEU:CD1	2.27	0.80
4:F:1333:LEU:HD21	5:G:115:TRP:CZ2	2.17	0.79
3:D:70:THR:HG23	4:F:729:ALA:HB3	1.66	0.78
5:G:701:LEU:HD23	5:G:701:LEU:O	1.83	0.78
4:F:102:LEU:HB3	4:F:118:LYS:HB2	1.66	0.77
5:G:886:VAL:HG11	5:G:1230:THR:HG21	1.67	0.77
4:F:592:ARG:HG3	4:F:655:VAL:HG12	1.65	0.76
5:G:482:ALA:O	5:G:488:ASN:ND2	2.17	0.76
4:F:176:ILE:HG23	4:F:405:PHE:HZ	1.49	0.76
5:G:701:LEU:HD23	5:G:723:TYR:HB2	1.68	0.76
3:E:181:GLU:HA	5:G:535:ARG:HH21	1.52	0.75
2:B:16:DC:H5'	4:F:1269:ARG:HG2	1.69	0.75
4:F:528:ARG:NH2	4:F:576:SER:O	2.19	0.75
5:G:836:ARG:NH1	5:G:869:CYS:SG	2.60	0.74
5:G:1005:LYS:HB3	5:G:1009:GLU:HG3	1.69	0.74
4:F:802:VAL:HG12	4:F:1096:ILE:HB	1.69	0.73
5:G:147:ILE:O	5:G:156:ARG:NH1	2.22	0.72
5:G:701:LEU:CD2	5:G:723:TYR:CB	2.64	0.72
5:G:926:PRO:HB3	5:G:1246:VAL:HG11	1.71	0.72
1:A:21:DC:H2'	1:A:22:DG:C8	2.25	0.72
4:F:1303:LYS:HG3	4:F:1315:MET:HG3	1.71	0.71
3:E:182:ARG:HB3	3:E:206:GLU:HB2	1.70	0.71
5:G:807:LEU:HD23	5:G:1255:VAL:HG13	1.71	0.71
5:G:430:HIS:CE1	5:G:432:LEU:HB2	2.26	0.70
5:G:510:LEU:HD11	5:G:624:ILE:HG23	1.72	0.70
3:D:207:THR:HG23	3:D:209:GLY:H	1.58	0.69
4:F:10:ARG:HE	4:F:791:LEU:HD12	1.55	0.69
3:E:91:ARG:HE	3:E:124:VAL:HG22	1.58	0.69

Continued on next page...

Continued from previous page...

Atom-1	Atom-2	Interatomic distance (Å)	Clash overlap (Å)
5:G:123:ARG:NH2	5:G:1334:GLU:OE2	2.26	0.68
5:G:485:MET:O	5:G:489:ASN:ND2	2.27	0.68
4:F:980:VAL:HG13	4:F:984:VAL:HG23	1.75	0.68
3:D:28:LEU:HD21	3:E:231:PHE:HZ	1.58	0.68
1:A:9:DG:OP2	5:G:275:ARG:NH1	2.28	0.67
4:F:389:PHE:HB3	4:F:420:LEU:HD12	1.76	0.67
5:G:1025:MET:HB2	5:G:1124:ILE:HB	1.77	0.67
5:G:606:ASN:OD1	5:G:610:ARG:NH2	2.29	0.66
5:G:923:ILE:O	5:G:1241:TYR:OH	2.14	0.66
4:F:987:GLU:O	4:F:991:LYS:NZ	2.23	0.66
5:G:1173:ARG:NH2	5:G:1194:ARG:O	2.28	0.66
5:G:552:ILE:HD11	5:G:570:LYS:HD2	1.77	0.66
5:G:701:LEU:CD2	5:G:723:TYR:CD1	2.80	0.65
5:G:1238:GLN:NE2	5:G:1250:ASP:OD1	2.28	0.65
5:G:1346:GLY:O	5:G:1350:ASN:ND2	2.27	0.65
5:G:825:VAL:HG23	5:G:838:ARG:HH12	1.62	0.65
5:G:1022:PRO:O	5:G:1126:GLN:NE2	2.30	0.65
4:F:706:ARG:NH1	4:F:791:LEU:O	2.29	0.64
5:G:800:LEU:HD22	5:G:1256:ILE:HD13	1.79	0.64
3:E:52:PRO:HA	3:E:150:ARG:HG2	1.80	0.64
5:G:813:ASP:OD1	5:G:883:ARG:NH1	2.28	0.64
2:B:18:DC:H2'	2:B:19:DA:C8	2.33	0.64
3:D:11:PRO:HB2	3:D:28:LEU:HD22	1.80	0.64
5:G:362:ARG:HD2	5:G:364:HIS:CE1	2.34	0.63
4:F:180:ARG:HB3	4:F:396:ASP:HB3	1.80	0.63
5:G:362:ARG:HD2	5:G:364:HIS:HE1	1.63	0.63
3:D:83:LEU:HD13	4:F:694:ARG:HH11	1.63	0.63
4:F:890:LYS:HD3	4:F:914:LYS:HG3	1.80	0.63
5:G:1219:ASP:HA	5:G:1222:ARG:HG2	1.81	0.63
4:F:817:LEU:HB3	4:F:1097:VAL:HB	1.80	0.63
5:G:773:PHE:O	5:G:776:THR:OG1	2.15	0.63
3:E:47:LEU:HD12	3:E:183:ILE:HD13	1.72	0.63
4:F:145:ILE:HB	4:F:456:VAL:HG22	1.80	0.63
4:F:434:ASP:HB2	4:F:439:LYS:HB3	1.78	0.63
2:B:18:DC:OP1	4:F:1262:LYS:N	2.31	0.63
5:G:430:HIS:CD2	5:G:925:GLU:HG3	2.34	0.63
4:F:197:ARG:NH1	4:F:201:ARG:O	2.31	0.62
4:F:1129:ASN:HD22	4:F:1177:ARG:HG3	1.62	0.62
5:G:519:ASN:ND2	5:G:707:ILE:O	2.31	0.62
5:G:1147:ALA:H	5:G:1308:GLY:HA2	1.63	0.62
5:G:353:SER:OG	5:G:372:MET:SD	2.57	0.62

Continued on next page...

Continued from previous page...

Atom-1	Atom-2	Interatomic distance (Å)	Clash overlap (Å)
4:F:59:ILE:HG12	4:F:472:GLU:HG3	1.80	0.62
4:F:178:PRO:HD3	4:F:183:TRP:HB3	1.81	0.62
4:F:979:LEU:HD23	4:F:989:LEU:HD11	1.82	0.62
4:F:843:THR:OG1	4:F:846:GLY:O	2.18	0.62
5:G:1274:PHE:HE1	5:G:1280:VAL:HG11	1.64	0.62
3:D:104:LYS:HG2	3:D:110:VAL:HG22	1.81	0.62
4:F:241:LEU:HD21	4:F:285:ILE:HD12	1.82	0.62
4:F:360:LEU:HD11	4:F:378:ARG:HE	1.64	0.62
4:F:4:SER:H	4:F:8:LYS:HE2	1.65	0.61
5:G:63:GLY:O	5:G:98:ARG:NH1	2.33	0.61
4:F:142:GLU:HB3	4:F:760:ASN:HD21	1.66	0.61
4:F:1119[A]:MET:HB2	4:F:1228:GLY:HA2	1.82	0.61
5:G:515:ARG:NH2	5:G:717:VAL:O	2.34	0.61
5:G:674:THR:OG1	5:G:677:GLU:OE1	2.17	0.61
5:G:803:VAL:HG21	5:G:1309:ILE:HG13	1.82	0.61
3:D:179:PRO:O	3:D:207:THR:OG1	2.17	0.61
4:F:563:THR:O	4:F:684:ASN:ND2	2.30	0.61
4:F:225:PHE:HZ	4:F:345:PRO:HA	1.66	0.61
5:G:1144:LEU:HD21	5:G:1233:ILE:HG23	1.81	0.61
5:G:1099:TYR:HE1	5:G:1199:PHE:HB3	1.65	0.61
2:B:11:DC:OP2	5:G:311:ARG:NH1	2.34	0.61
4:F:715:THR:HG22	4:F:786:GLY:H	1.65	0.61
5:G:517:CYS:HB3	5:G:520:ALA:HB2	1.83	0.61
5:G:848:VAL:HG12	5:G:857:LEU:HD12	1.82	0.61
4:F:1260:GLY:O	5:G:346:ARG:NH1	2.34	0.60
4:F:968:GLU:HG2	4:F:972:PHE:HD2	1.66	0.60
5:G:367:GLY:HA3	5:G:448:GLN:HB2	1.82	0.60
1:A:17:DA:H2	4:F:183:TRP:HE1	1.46	0.60
5:G:1348:LYS:HA	5:G:1351:VAL:HG22	1.83	0.60
4:F:1107:MET:HB3	5:G:763:PHE:HE2	1.65	0.60
5:G:644:MET:CE	5:G:740:LEU:HD13	2.31	0.60
4:F:18:ARG:NH2	4:F:622:ASN:OD1	2.34	0.60
5:G:417:ARG:O	6:H:45:LYS:NZ	2.26	0.60
5:G:878:ASP:O	5:G:990:ARG:NH1	2.35	0.60
4:F:1117:LEU:HD13	4:F:1195:ILE:HG12	1.83	0.60
4:F:839:VAL:HG22	4:F:1049:ILE:HG12	1.82	0.60
4:F:870:ILE:O	4:F:944:ARG:NH1	2.35	0.60
5:G:495:ASN:ND2	5:G:1247:LYS:O	2.34	0.60
2:B:18:DC:H2'	2:B:19:DA:H8	1.68	0.59
5:G:660:GLU:HG3	5:G:685:ILE:HD12	1.83	0.59
5:G:416:ILE:HG13	5:G:439:PRO:HG2	1.82	0.59

Continued on next page...

Continued from previous page...

Atom-1	Atom-2	Interatomic distance (Å)	Clash overlap (Å)
5:G:701:LEU:HD23	5:G:723:TYR:CD1	2.36	0.59
4:F:1004:ASP:OD1	4:F:1005:GLU:N	2.36	0.59
5:G:22:ILE:HG21	5:G:1335:ALA:HB1	1.84	0.59
5:G:644:MET:HB2	5:G:764:ARG:HD2	1.83	0.59
2:B:14:TTD:H2'	2:B:14:TTD:O4P	2.02	0.58
3:D:135:ASP:HB3	3:D:138:ALA:HB2	1.86	0.58
4:F:697:LYS:O	4:F:799:ASN:ND2	2.36	0.58
3:D:192:VAL:HG12	3:D:194:GLN:H	1.69	0.58
4:F:808:ASN:H	5:G:633:ALA:HB2	1.68	0.58
4:F:1241:ASP:O	4:F:1262:LYS:HD2	2.03	0.58
5:G:1106:ILE:HB	5:G:1123:ARG:HB2	1.84	0.58
3:E:43:LEU:HD23	3:E:46:ILE:HD11	1.85	0.58
4:F:1308:ILE:HD11	5:G:472:LEU:HD21	1.85	0.58
3:D:48:LEU:HG	3:D:183:ILE:HD12	1.85	0.58
4:F:1073:LYS:NZ	5:G:462:ASP:O	2.27	0.58
5:G:54:ASP:OD1	5:G:60:ARG:NH2	2.36	0.58
4:F:257:ALA:N	4:F:260:LYS:O	2.37	0.57
4:F:339:ASN:H	4:F:343:HIS:HB2	1.69	0.57
4:F:472:GLU:HA	4:F:475:VAL:HG12	1.84	0.57
2:B:3:DC:H2''	2:B:4:DG:C8	2.39	0.57
5:G:724:MET:O	5:G:728:SER:HB3	2.04	0.57
5:G:211:GLU:HA	5:G:214:ARG:HB2	1.86	0.57
5:G:1230:THR:HG22	5:G:1257:VAL:HG11	1.86	0.57
1:A:28:DG:H2''	1:A:29:DA:C8	2.40	0.57
4:F:257:ALA:HA	4:F:282:VAL:HG21	1.86	0.57
4:F:89:GLY:HA2	4:F:140:GLY:HA3	1.87	0.57
5:G:146:VAL:HG21	5:G:154:LEU:HD13	1.87	0.57
4:F:562:GLU:OE1	4:F:662:SER:OG	2.15	0.57
5:G:1158:GLU:OE1	5:G:1222:ARG:NH1	2.37	0.57
2:B:21:DG:H2''	4:F:143:ARG:HH22	1.69	0.56
3:E:46:ILE:HG13	3:E:220:ALA:HB1	1.86	0.56
3:D:9:LEU:HB3	3:D:30:PRO:HG2	1.85	0.56
5:G:704:GLU:HG3	5:G:718:SER:HA	1.87	0.56
5:G:1319:PHE:CE1	5:G:1342:ASP:HB2	2.39	0.56
6:H:3:ARG:HD3	6:H:48:VAL:HG13	1.86	0.56
4:F:40:GLU:O	4:F:73:TYR:OH	2.23	0.56
4:F:252:SER:O	4:F:265:LYS:NZ	2.36	0.56
4:F:688:GLN:OE1	4:F:1237:HIS:NE2	2.38	0.56
5:G:332:LYS:HG2	5:G:1328:THR:HB	1.87	0.56
5:G:429:LEU:HB3	5:G:925:GLU:HG2	1.88	0.56
5:G:699:ASP:OD1	5:G:700:ASN:N	2.39	0.56

Continued on next page...

Continued from previous page...

Atom-1	Atom-2	Interatomic distance (Å)	Clash overlap (Å)
7:R:14:C:H2'	7:R:15:G:H8	1.70	0.56
5:G:129:ASP:OD2	5:G:220:ARG:NH1	2.38	0.56
4:F:151:ARG:HH21	4:F:156:PHE:HB2	1.71	0.56
5:G:553:THR:HG23	5:G:567:THR:HG22	1.88	0.56
5:G:597:GLY:O	5:G:601:ILE:HG13	2.06	0.56
5:G:1062:LEU:O	5:G:1067:ARG:NH1	2.38	0.56
7:R:14:C:H2'	7:R:15:G:C8	2.41	0.56
3:E:16:ILE:HG12	3:E:26:VAL:HG13	1.88	0.56
4:F:489:PRO:HA	4:F:492:MET:HG2	1.88	0.56
5:G:1144:LEU:CD2	5:G:1233:ILE:HG23	2.36	0.56
2:B:17:DA:OP2	5:G:346:ARG:NH2	2.39	0.55
5:G:974:VAL:HG23	5:G:1002:VAL:HG22	1.88	0.55
5:G:591:ILE:O	5:G:594:GLN:NE2	2.39	0.55
4:F:833:ILE:HA	4:F:1054:LEU:O	2.06	0.55
4:F:529[A]:ARG:NH1	4:F:574:SER:OG	2.39	0.55
4:F:812:PHE:HB3	5:G:357:VAL:HG21	1.89	0.55
4:F:889:PRO:HA	4:F:913:VAL:HG12	1.89	0.55
2:B:11:DC:H2'	2:B:12:DC:C6	2.42	0.55
4:F:463:GLN:HG2	4:F:505:PHE:HB2	1.89	0.55
4:F:10:ARG:HD3	4:F:697:LYS:HD3	1.88	0.55
2:B:11:DC:H4'	5:G:1327:GLU:HG2	1.89	0.54
5:G:44:ILE:HG22	5:G:51:PRO:HA	1.88	0.54
5:G:521:LYS:NZ	5:G:540:GLY:O	2.28	0.54
5:G:978:ARG:HE	5:G:979:ASN:H	1.55	0.54
4:F:199:ASP:O	4:F:201:ARG:HG3	2.08	0.54
5:G:245:LEU:HD23	5:G:250:ARG:HD2	1.90	0.54
4:F:272:ARG:HA	4:F:275:ARG:HG2	1.89	0.54
5:G:814:CYS:SG	5:G:883:ARG:NH2	2.81	0.54
2:B:26:DA:H2'	2:B:27:DT:H5'	1.88	0.54
5:G:533:ALA:HB1	5:G:574:VAL:HG13	1.88	0.54
4:F:590:PRO:HB3	4:F:605:TYR:CE1	2.43	0.54
5:G:166:LEU:HD23	5:G:169:LEU:HD21	1.90	0.54
4:F:214:ASN:HA	4:F:359:ARG:HD2	1.90	0.54
4:F:942:ASP:O	4:F:946:LEU:N	2.37	0.54
1:A:16:DA:H2'	4:F:183:TRP:CZ2	2.43	0.53
4:F:176:ILE:HD12	4:F:184:LEU:HD11	1.88	0.53
5:G:807:LEU:HD22	5:G:1259:GLN:HE21	1.73	0.53
1:A:16:DA:H2'	4:F:183:TRP:HZ2	1.72	0.53
4:F:408:SER:OG	4:F:431:LYS:NZ	2.42	0.53
4:F:943:LYS:HA	4:F:946:LEU:HB2	1.91	0.53
5:G:250:ARG:O	5:G:266:ASN:ND2	2.42	0.53

Continued on next page...

Continued from previous page...

Atom-1	Atom-2	Interatomic distance (Å)	Clash overlap (Å)
5:G:370:LYS:HG2	5:G:441:LEU:HD22	1.91	0.53
5:G:1356:LEU:O	5:G:1366:HIS:NE2	2.34	0.53
3:D:158:ARG:NH2	3:D:173:VAL:O	2.41	0.53
5:G:430:HIS:HD2	5:G:925:GLU:HG3	1.71	0.53
4:F:968:GLU:HG2	4:F:972:PHE:CD2	2.43	0.53
5:G:1222:ARG:HG3	5:G:1223:LEU:HG	1.90	0.53
4:F:520:PRO:HG3	4:F:714:VAL:HG21	1.90	0.53
5:G:502:PRO:O	5:G:598:LYS:NZ	2.42	0.53
2:B:13:DA:OP1	5:G:339:ARG:NH1	2.35	0.53
3:E:43:LEU:O	3:E:47:LEU:HG	2.09	0.53
4:F:1304:MET:HG3	4:F:1305:TYR:N	2.24	0.53
4:F:1127:LYS:HD3	4:F:1144:PHE:CZ	2.43	0.52
4:F:1289:GLU:OE2	5:G:473:THR:OG1	2.22	0.52
5:G:423:LEU:HD22	5:G:468:VAL:HG22	1.91	0.52
4:F:1254:VAL:O	5:G:99:ARG:NH2	2.43	0.52
5:G:278:ARG:NH1	5:G:295:GLU:OE2	2.42	0.52
5:G:536:LEU:HB3	5:G:542:ALA:HB3	1.91	0.52
5:G:1094:ASP:OD1	5:G:1094:ASP:N	2.43	0.52
6:H:6:VAL:HG12	6:H:10:VAL:HG23	1.91	0.52
1:A:25:DG:H2''	1:A:26:DA:H5''	1.92	0.52
3:E:105:SER:HA	3:E:133:LEU:HD12	1.92	0.52
4:F:705:GLU:HB3	4:F:794:LEU:H	1.74	0.52
5:G:900:GLY:O	5:G:909:ILE:HD12	2.09	0.52
2:B:4:DG:C8	2:B:4:DG:H5'	2.45	0.52
4:F:563:THR:O	4:F:680:LEU:HD11	2.09	0.52
4:F:667:LEU:HD11	4:F:708:VAL:HG21	1.92	0.52
4:F:1274:GLU:CG	5:G:424:ASN:HD21	2.23	0.52
4:F:255:ILE:HD11	4:F:263:VAL:HB	1.92	0.52
4:F:1107:MET:HB3	5:G:763:PHE:CE2	2.45	0.52
5:G:789:LYS:NZ	5:G:930:LEU:O	2.37	0.52
3:E:4:SER:OG	3:E:5:VAL:N	2.42	0.51
4:F:461:GLU:HG2	4:F:465:ARG:HE	1.74	0.51
4:F:559:CYS:HB2	4:F:662:SER:HB3	1.91	0.51
4:F:935:THR:OG1	4:F:1048:LYS:NZ	2.40	0.51
5:G:701:LEU:CD2	5:G:723:TYR:HD1	2.23	0.51
5:G:899:TYR:CE1	5:G:1251:LYS:HB3	2.45	0.51
3:E:155:ALA:N	3:E:174:ASP:OD1	2.43	0.51
4:F:657:THR:HG22	4:F:1187:PHE:HB2	1.92	0.51
5:G:118:LYS:HD3	5:G:312:ARG:HG3	1.93	0.51
6:H:6:VAL:HG13	6:H:9:ALA:HB3	1.93	0.51
5:G:701:LEU:HD23	5:G:723:TYR:CG	2.46	0.51

Continued on next page...

Continued from previous page...

Atom-1	Atom-2	Interatomic distance (Å)	Clash overlap (Å)
5:G:872:LEU:HD22	5:G:877:VAL:HG21	1.93	0.51
4:F:254:ASP:OD1	4:F:265:LYS:N	2.44	0.51
5:G:614:LEU:HD23	6:H:7:GLN:NE2	2.26	0.51
5:G:1045:THR:HA	5:G:1067:ARG:HD2	1.93	0.51
4:F:10:ARG:NH1	4:F:1175:ASN:O	2.43	0.51
4:F:1274:GLU:HG3	5:G:424:ASN:HD21	1.75	0.51
5:G:247:PRO:HA	5:G:250:ARG:NH1	2.25	0.51
3:E:44:ARG:NH1	5:G:538:ARG:HB3	2.26	0.50
5:G:1178:THR:HG22	5:G:1185:PRO:HG3	1.92	0.50
4:F:1003:THR:HA	4:F:1008:GLN:HB3	1.93	0.50
4:F:1293:VAL:HG13	4:F:1304:MET:SD	2.51	0.50
4:F:1300:GLY:HA2	4:F:1303:LYS:NZ	2.26	0.50
5:G:111:THR:O	5:G:239:LEU:N	2.39	0.50
5:G:724:MET:O	5:G:728:SER:CB	2.60	0.50
5:G:1165:PHE:HA	5:G:1175:LEU:HD22	1.93	0.50
4:F:798:GLN:NE2	4:F:827:ARG:O	2.45	0.50
4:F:1100:PRO:HB2	5:G:639:VAL:HG23	1.93	0.50
5:G:647:PRO:HG3	5:G:697:MET:HA	1.94	0.50
1:A:18:DT:C4	4:F:542:ARG:HD2	2.46	0.50
2:B:14:TTD:O4P	2:B:14:TTD:H1	2.12	0.50
2:B:14:TTD:O2	5:G:794:GLY:HA3	2.12	0.50
4:F:557:ARG:NH2	4:F:611:GLU:OE1	2.37	0.50
4:F:1291:LEU:HA	5:G:345:LYS:HD2	1.94	0.50
5:G:829:GLY:HA2	5:G:993:GLU:HG2	1.93	0.50
5:G:682:VAL:HA	5:G:685:ILE:HG12	1.94	0.50
5:G:668:PHE:HB2	5:G:678:ARG:HD3	1.94	0.49
4:F:88:ARG:HA	4:F:934:PHE:CE1	2.47	0.49
4:F:188:PHE:HE1	4:F:436:ARG:HH11	1.58	0.49
3:D:100:LEU:HD21	3:D:121:VAL:HG21	1.92	0.49
5:G:30:ILE:HD13	5:G:243:PRO:HD3	1.94	0.49
5:G:126:LEU:HD21	5:G:219:LYS:HG3	1.93	0.49
3:E:191:ARG:HG2	3:E:196:THR:HG22	1.95	0.49
4:F:1269:ARG:NH1	5:G:344:GLY:O	2.45	0.49
4:F:1313:HIS:HB3	5:G:473:THR:HG22	1.94	0.49
3:D:111:THR:HG22	3:D:129:VAL:HG22	1.94	0.49
4:F:194:LEU:HD11	4:F:436:ARG:HH22	1.76	0.49
5:G:442:ILE:HG22	5:G:444:GLY:H	1.76	0.49
3:D:153:VAL:O	3:D:158:ARG:NH1	2.45	0.49
4:F:598:VAL:HG22	4:F:628:HIS:NE2	2.28	0.49
3:E:185:TYR:HB2	3:E:201:LEU:HD11	1.95	0.49
4:F:1061:GLN:HE22	5:G:445:LYS:HE2	1.77	0.49

Continued on next page...

Continued from previous page...

Atom-1	Atom-2	Interatomic distance (Å)	Clash overlap (Å)
7:R:10:C:HO2'	7:R:11:G:H8	1.61	0.49
2:B:18:DC:H5''	4:F:1262:LYS:HB2	1.94	0.49
4:F:194:LEU:HG	4:F:436:ARG:HH12	1.77	0.49
4:F:821:ARG:HA	4:F:824:GLN:HE21	1.77	0.49
5:G:275:ARG:HH11	5:G:298:MET:HB3	1.78	0.48
1:A:15:DG:H2''	1:A:16:DA:O5'	2.13	0.48
3:E:47:LEU:HD21	3:E:217:ILE:HA	1.96	0.48
5:G:510:LEU:HD12	5:G:601:ILE:HD13	1.94	0.48
3:D:45:ARG:NH1	4:F:1215:GLY:O	2.40	0.48
5:G:370:LYS:HE2	5:G:443:GLU:HA	1.95	0.48
5:G:476:ALA:HA	5:G:479:GLU:HG2	1.95	0.48
6:H:13:ILE:HG21	6:H:19:LEU:HB2	1.95	0.48
2:B:19:DA:H2'	2:B:20:DC:C6	2.48	0.48
4:F:84:GLU:HA	4:F:87:ILE:HG22	1.96	0.48
4:F:693:LEU:HD11	4:F:1057:LYS:HZ2	1.78	0.48
4:F:1101:LEU:HD21	5:G:508:LEU:HD22	1.95	0.48
4:F:1246:ARG:NH2	4:F:1258:PRO:HB2	2.29	0.48
1:A:16:DA:N6	4:F:181:GLY:O	2.46	0.48
3:D:43:LEU:C	3:D:47:LEU:HD13	2.28	0.48
5:G:430:HIS:HE1	5:G:432:LEU:HB2	1.78	0.48
5:G:894:VAL:HG22	5:G:1258:ARG:NH1	2.28	0.48
5:G:1153:PRO:HB3	5:G:1216:ALA:HB2	1.96	0.48
2:B:9:DC:H2''	2:B:10:DG:C8	2.49	0.48
4:F:303:ASP:HB2	4:F:310:ILE:HD11	1.96	0.48
4:F:765:ILE:HA	4:F:787:PRO:HG3	1.96	0.48
5:G:24:LEU:HD21	5:G:116:PHE:HZ	1.79	0.48
5:G:1143:ASP:HB2	5:G:1148:ARG:HG3	1.96	0.48
4:F:153:PRO:HA	4:F:177:ILE:HG23	1.95	0.48
5:G:489:ASN:O	5:G:499:ILE:HD11	2.14	0.48
4:F:204:LEU:HB3	4:F:208:ILE:HD12	1.94	0.47
5:G:1226:VAL:O	5:G:1230:THR:HG23	2.14	0.47
4:F:147:SER:HB3	4:F:453:ILE:HG23	1.97	0.47
4:F:432:LEU:O	4:F:435:ILE:HG22	2.14	0.47
5:G:253:VAL:HG21	7:R:12:A:H1'	1.96	0.47
4:F:961:SER:O	4:F:964:LEU:HG	2.13	0.47
5:G:701:LEU:HD23	5:G:723:TYR:CB	2.38	0.47
4:F:431:LYS:HA	4:F:434:ASP:OD2	2.13	0.47
4:F:1270:PHE:CZ	4:F:1274:GLU:HB3	2.49	0.47
1:A:17:DA:H2	4:F:183:TRP:NE1	2.12	0.47
3:E:109:PRO:HA	3:E:132:HIS:CE1	2.50	0.47
4:F:1313:HIS:HB3	5:G:473:THR:HA	1.97	0.47

Continued on next page...

Continued from previous page...

Atom-1	Atom-2	Interatomic distance (Å)	Clash overlap (Å)
5:G:222:LYS:NZ	5:G:1278:GLU:HG2	2.29	0.47
3:D:75:GLN:NE2	4:F:771:VAL:O	2.40	0.47
4:F:548:ARG:NH1	4:F:567:PRO:O	2.36	0.47
4:F:697:LYS:HE2	4:F:1181:PRO:HG3	1.97	0.47
4:F:808:ASN:HD21	4:F:1216:ARG:HH22	1.62	0.47
4:F:953:LEU:HD21	4:F:1036:ILE:HG21	1.95	0.47
4:F:1340:GLU:OE1	4:F:1340:GLU:N	2.47	0.47
5:G:118:LYS:HG2	5:G:311:ARG:HB3	1.96	0.47
5:G:250:ARG:O	5:G:250:ARG:HG2	2.15	0.47
5:G:734:ALA:O	5:G:738:ARG:HG3	2.15	0.47
5:G:746:LEU:HD23	5:G:758:PRO:HB3	1.97	0.47
2:B:19:DA:H2'	2:B:20:DC:H6	1.80	0.47
4:F:444:ASP:HB3	4:F:447:HIS:HB2	1.96	0.47
4:F:681:MET:O	4:F:685:MET:HB2	2.15	0.47
3:E:152:TYR:HE1	3:E:176:CYS:HG	1.62	0.47
4:F:1261:GLY:O	4:F:1266:GLY:N	2.31	0.47
5:G:118:LYS:HE2	5:G:311:ARG:HB3	1.96	0.47
7:R:12:A:H2'	7:R:13:G:H8	1.79	0.47
3:E:182:ARG:NH1	5:G:534:GLU:OE2	2.48	0.47
4:F:839:VAL:O	4:F:886:LYS:NZ	2.48	0.47
4:F:978:VAL:HG21	4:F:1014:LEU:HD13	1.96	0.46
4:F:979:LEU:HG	4:F:985:GLU:HB2	1.96	0.46
4:F:1192:GLU:HG3	5:G:641:ILE:HD13	1.97	0.46
5:G:807:LEU:HD22	5:G:1259:GLN:NE2	2.29	0.46
4:F:968:GLU:O	4:F:972:PHE:N	2.35	0.46
4:F:1205:PRO:HG2	4:F:1210:ILE:HG12	1.97	0.46
5:G:601:ILE:O	5:G:604:MET:HG2	2.16	0.46
5:G:1146:GLU:HA	5:G:1309:ILE:H	1.81	0.46
1:A:25:DG:H1	2:B:6:DC:H42	1.63	0.46
3:E:194:GLN:OE1	5:G:409:TRP:NE1	2.48	0.46
4:F:622:ASN:ND2	4:F:631:GLU:OE2	2.49	0.46
5:G:447:ILE:HD11	5:G:466:MET:HB3	1.97	0.46
5:G:1144:LEU:HD22	5:G:1237:VAL:CG2	2.46	0.46
5:G:308:ASP:HB3	5:G:311:ARG:HD3	1.98	0.46
5:G:899:TYR:HD2	5:G:909:ILE:HD13	1.80	0.46
5:G:1079:LYS:HB3	5:G:1079:LYS:HE3	1.75	0.46
2:B:18:DC:O3'	4:F:1262:LYS:HE3	2.15	0.46
5:G:113:HIS:HB3	5:G:116:PHE:HD2	1.80	0.46
2:B:7:DG:H2''	2:B:8:DG:C8	2.50	0.46
3:E:110:VAL:H	3:E:132:HIS:CE1	2.34	0.46
4:F:1114:GLU:OE1	4:F:1230:MET:HG3	2.15	0.46

Continued on next page...

Continued from previous page...

Atom-1	Atom-2	Interatomic distance (Å)	Clash overlap (Å)
5:G:129:ASP:HB3	5:G:220:ARG:HD3	1.98	0.46
1:A:12:DT:H3'	1:A:13:DG:H2'	1.98	0.46
2:B:11:DC:P	5:G:311:ARG:HH12	2.39	0.46
4:F:724:VAL:HG11	4:F:727:VAL:HG23	1.98	0.46
4:F:1003:THR:HG22	4:F:1009:ASN:HB3	1.98	0.46
5:G:848:VAL:HB	5:G:858:VAL:HG22	1.97	0.46
5:G:976:THR:HG22	5:G:1028:ILE:HG22	1.98	0.46
3:E:79:LEU:HD11	5:G:526:VAL:HG21	1.98	0.46
4:F:150:HIS:CE1	4:F:454:ARG:HB2	2.50	0.46
4:F:471:VAL:HG22	4:F:497:PRO:HG2	1.97	0.46
5:G:425:ARG:NH1	7:R:20:A:O3'	2.49	0.46
5:G:867:GLN:O	5:G:871:LEU:HG	2.16	0.46
2:B:6:DC:H5'	4:F:191:LYS:HE2	1.97	0.46
3:D:97:GLU:HG3	3:D:145:LYS:HE3	1.97	0.46
4:F:14:ASP:HA	4:F:1183:ALA:HB3	1.98	0.46
4:F:56:VAL:HG12	4:F:59:ILE:HD11	1.98	0.46
4:F:942:ASP:OD1	4:F:943:LYS:N	2.45	0.46
4:F:1289:GLU:HG2	4:F:1316:GLU:OE2	2.15	0.46
5:G:925:GLU:HB3	5:G:926:PRO:HD3	1.97	0.46
4:F:107:ARG:HG2	4:F:108:GLU:OE1	2.16	0.46
4:F:1072:ASN:HD22	4:F:1111:GLN:CD	2.19	0.46
4:F:444:ASP:OD2	4:F:447:HIS:N	2.49	0.45
4:F:1246:ARG:HH21	4:F:1267:GLY:N	2.14	0.45
5:G:24:LEU:HD21	5:G:116:PHE:CZ	2.51	0.45
5:G:520:ALA:HB3	5:G:546:ALA:HA	1.98	0.45
5:G:549:LYS:HE2	5:G:569:LEU:HG	1.97	0.45
5:G:850:LYS:HB2	5:G:857:LEU:HD21	1.98	0.45
5:G:865:HIS:CD2	5:G:901:ARG:HH12	2.34	0.45
4:F:205:PRO:HG2	4:F:208:ILE:HD11	1.97	0.45
4:F:549:ASP:OD1	4:F:550:VAL:N	2.50	0.45
5:G:490:ILE:O	5:G:499:ILE:HG12	2.16	0.45
4:F:732:ILE:HD11	4:F:769:PRO:HB3	1.98	0.45
5:G:701:LEU:HD22	5:G:723:TYR:HD1	1.80	0.45
3:E:186:ASN:OD1	3:E:202:VAL:HB	2.16	0.45
5:G:18:ASP:OD1	5:G:18:ASP:N	2.46	0.45
5:G:349:TYR:CE1	5:G:379:PRO:HG3	2.51	0.45
5:G:749:LYS:CG	5:G:750:PRO:HD2	2.46	0.45
5:G:1212:ASP:N	5:G:1212:ASP:OD1	2.50	0.45
4:F:311:CYS:HB3	4:F:321:LEU:HD11	1.99	0.45
5:G:492:SER:OG	5:G:495:ASN:OD1	2.35	0.45
5:G:527:LEU:HB2	5:G:550:VAL:HG22	1.98	0.45

Continued on next page...

Continued from previous page...

Atom-1	Atom-2	Interatomic distance (Å)	Clash overlap (Å)
5:G:1146:GLU:HG2	5:G:1309:ILE:H	1.81	0.45
5:G:1177:ILE:O	5:G:1185:PRO:HB3	2.17	0.45
7:R:12:A:H2'	7:R:13:G:C8	2.51	0.45
1:A:21:DC:H4'	5:G:1148:ARG:NH1	2.32	0.45
2:B:3:DC:H2''	2:B:4:DG:N7	2.32	0.45
2:B:27:DT:H2''	2:B:28:DT:H5''	1.98	0.45
4:F:688:GLN:HB3	4:F:1235:LEU:HD12	1.99	0.45
4:F:1122:LYS:HG2	4:F:1229:TYR:CE1	2.52	0.45
4:F:1269:ARG:HB2	5:G:346:ARG:HE	1.81	0.45
5:G:227:PHE:CE1	5:G:1337:VAL:HG13	2.52	0.45
5:G:520:ALA:HB1	5:G:543:SER:OG	2.16	0.45
5:G:650:LYS:HE2	5:G:654:ILE:HD11	1.98	0.45
4:F:7:GLU:OE1	4:F:9:LYS:NZ	2.44	0.45
4:F:80:PHE:CE1	4:F:1038:GLN:HG2	2.52	0.45
4:F:1176:LEU:HD13	4:F:1180:MET:SD	2.57	0.45
5:G:706:VAL:HG21	5:G:716:GLN:HE21	1.82	0.45
5:G:43:THR:HG22	5:G:56:LEU:HD12	1.99	0.45
3:E:107:ILE:HG23	3:E:134:THR:HA	1.99	0.45
4:F:666:SER:HA	4:F:1186:VAL:HG11	1.99	0.45
4:F:485:ASP:H	4:F:487:LEU:HG	1.82	0.44
5:G:148:GLU:OE2	5:G:150:GLY:N	2.50	0.44
4:F:815:SER:HB3	4:F:1077:SER:OG	2.17	0.44
4:F:1063:GLY:HA3	4:F:1239:VAL:HG11	1.99	0.44
3:E:16:ILE:HG23	3:E:26:VAL:HG22	1.99	0.44
4:F:74:ARG:HH22	4:F:121:GLU:CD	2.19	0.44
4:F:141:THR:HB	4:F:514:PHE:HE1	1.81	0.44
4:F:310:ILE:HD12	4:F:330:HIS:HE1	1.81	0.44
4:F:80:PHE:HE1	4:F:1038:GLN:HG2	1.82	0.44
4:F:807:TRP:HB2	4:F:1097:VAL:HG11	1.99	0.44
4:F:1278:LEU:HB2	4:F:1287:LEU:HD21	1.99	0.44
1:A:20:DG:H2'	1:A:21:DC:C6	2.53	0.44
5:G:932:MET:HB2	5:G:1136:GLY:HA3	1.99	0.44
5:G:527:LEU:HD21	5:G:536:LEU:HD12	1.98	0.44
5:G:805:GLN:HG2	5:G:1348:LYS:HE2	2.00	0.44
5:G:374:LEU:O	5:G:378:LYS:HG3	2.17	0.44
5:G:599:LYS:O	5:G:603:LYS:HG2	2.18	0.44
1:A:9:DG:H1'	1:A:10:DC:O4'	2.17	0.44
2:B:14:TTD:H72	2:B:14:TTD:H5A1	1.71	0.44
4:F:400:VAL:HA	4:F:403:MET:HG2	2.00	0.44
4:F:720:ARG:NH1	4:F:745:GLU:OE2	2.51	0.44
5:G:282:LEU:HD21	5:G:291:ILE:HG22	2.00	0.44

Continued on next page...

Continued from previous page...

Atom-1	Atom-2	Interatomic distance (Å)	Clash overlap (Å)
5:G:504:GLN:HG3	5:G:731:ARG:NH2	2.33	0.44
5:G:1146:GLU:HG2	5:G:1309:ILE:N	2.33	0.44
4:F:177:ILE:HD12	4:F:183:TRP:CD1	2.53	0.43
5:G:518:VAL:HG11	5:G:714:GLU:HB2	1.99	0.43
5:G:865:HIS:HD2	5:G:901:ARG:HH12	1.66	0.43
5:G:1150:PRO:O	5:G:1153:PRO:HD3	2.18	0.43
4:F:250:THR:OG1	4:F:251:ALA:N	2.51	0.43
4:F:845:LEU:HD23	4:F:889:PRO:HB2	1.99	0.43
5:G:26:SER:HB2	5:G:29:MET:H	1.83	0.43
1:A:3:DA:N3	1:A:3:DA:H2'	2.34	0.43
4:F:1035:LYS:HA	4:F:1038:GLN:HB2	2.00	0.43
4:F:1281:TYR:CE2	5:G:431:ARG:HG2	2.53	0.43
4:F:1286:THR:N	5:G:479:GLU:OE2	2.52	0.43
5:G:661:VAL:HG12	5:G:685:ILE:HD11	1.99	0.43
5:G:893:GLY:O	5:G:1258:ARG:NH2	2.52	0.43
5:G:1196:LEU:HG	5:G:1210:ILE:HG22	1.99	0.43
5:G:1330:ARG:O	5:G:1333:THR:OG1	2.26	0.43
7:R:16:U:H2'	7:R:17:G:C8	2.53	0.43
5:G:868:TRP:O	5:G:872:LEU:HG	2.18	0.43
4:F:227:LYS:HE2	4:F:298:ALA:HB1	2.01	0.43
4:F:804:PHE:O	5:G:638:SER:OG	2.23	0.43
4:F:1128:ILE:HG13	4:F:1144:PHE:HE2	1.84	0.43
5:G:158:GLN:OE1	5:G:158:GLN:N	2.52	0.43
5:G:507:VAL:HG12	5:G:728:SER:OG	2.18	0.43
5:G:701:LEU:CD2	5:G:723:TYR:CG	3.02	0.43
5:G:847:ASP:HB3	5:G:856:ILE:HG23	2.00	0.43
5:G:865:HIS:H	5:G:868:TRP:HD1	1.66	0.43
5:G:1158:GLU:OE1	5:G:1223:LEU:HD21	2.18	0.43
5:G:1292:LEU:HD22	5:G:1297:LYS:HE3	2.01	0.43
3:E:29:GLU:HA	3:E:30:PRO:HA	1.69	0.43
4:F:1061:GLN:HE21	4:F:1239:VAL:HG23	1.83	0.43
5:G:134:ASP:O	5:G:138:VAL:HG23	2.19	0.43
5:G:702:GLN:HB3	5:G:723:TYR:CE1	2.54	0.43
5:G:1292:LEU:HD12	5:G:1299:GLY:HA2	2.01	0.43
3:D:29:GLU:HA	3:D:30:PRO:HA	1.80	0.43
4:F:377:THR:HB	4:F:380:ALA:HB3	2.00	0.43
4:F:962:GLU:HA	4:F:965:GLN:HB2	2.01	0.43
5:G:335:GLN:HA	5:G:340:GLN:HG3	2.00	0.43
5:G:1119:ASP:N	5:G:1119:ASP:OD1	2.52	0.43
5:G:1305:ASP:OD1	5:G:1305:ASP:N	2.48	0.43
6:H:69:ARG:O	6:H:72:GLN:HG2	2.19	0.43

Continued on next page...

Continued from previous page...

Atom-1	Atom-2	Interatomic distance (Å)	Clash overlap (Å)
4:F:648:ASP:OD1	4:F:648:ASP:N	2.51	0.43
4:F:800:MET:O	4:F:1229:TYR:HA	2.18	0.43
5:G:818:GLU:HG3	5:G:887:SER:HB2	2.01	0.43
4:F:109:ALA:HB1	4:F:113:THR:HB	2.01	0.42
4:F:817:LEU:HD11	4:F:1080:ASN:HB2	2.01	0.42
4:F:1341:ASP:OD1	4:F:1342:GLU:N	2.52	0.42
5:G:132:LEU:HD11	5:G:312:ARG:HH22	1.84	0.42
5:G:522:GLY:HA2	5:G:525:MET:HE2	2.01	0.42
6:H:25:ARG:NH1	6:H:64:LEU:HB3	2.34	0.42
4:F:737:ASN:O	4:F:741:MET:HG3	2.18	0.42
4:F:1032:LYS:O	4:F:1036:ILE:HG12	2.18	0.42
5:G:317:THR:HG22	5:G:323:PRO:HA	2.01	0.42
5:G:432:LEU:HD13	5:G:499:ILE:HD13	2.01	0.42
5:G:706:VAL:HG21	5:G:716:GLN:NE2	2.34	0.42
5:G:807:LEU:HD11	5:G:894:VAL:HG23	2.00	0.42
5:G:836:ARG:HG3	5:G:869:CYS:SG	2.59	0.42
5:G:1036:ARG:NH1	5:G:1111:ASP:OD1	2.52	0.42
5:G:1350:ASN:HA	5:G:1353:VAL:HG22	2.00	0.42
1:A:18:DT:N3	4:F:542:ARG:HD2	2.35	0.42
5:G:759:ILE:H	5:G:759:ILE:HD12	1.84	0.42
5:G:255:LEU:HG	5:G:261:ALA:HB2	2.01	0.42
3:E:179:PRO:HG3	3:E:211:ILE:HD12	2.01	0.42
4:F:884:VAL:O	4:F:917:SER:HB2	2.20	0.42
5:G:549:LYS:HG2	5:G:569:LEU:HG	2.00	0.42
5:G:425:ARG:HD3	5:G:459:ALA:HB2	2.00	0.42
5:G:615:LYS:HB2	5:G:616:PRO:HD3	2.02	0.42
5:G:865:HIS:HA	5:G:901:ARG:HH22	1.84	0.42
5:G:1152:GLU:HG3	5:G:1214:PRO:HD2	2.00	0.42
4:F:668:ILE:HD12	4:F:1069:ARG:O	2.20	0.42
4:F:813:GLU:OE2	5:G:731:ARG:NH2	2.46	0.42
5:G:21:LYS:HZ2	5:G:23:ALA:HB2	1.84	0.42
5:G:264:ASP:HB3	5:G:324:LEU:HB3	2.01	0.42
5:G:423:LEU:HB3	5:G:466:MET:SD	2.59	0.42
5:G:504:GLN:HE21	5:G:731:ARG:NH1	2.17	0.42
5:G:907:HIS:ND1	5:G:908:ILE:O	2.45	0.42
4:F:474:ALA:O	4:F:477:GLU:HG3	2.19	0.42
4:F:1301:ARG:HA	4:F:1304:MET:HG2	2.01	0.42
4:F:1329:GLU:HG3	5:G:331:ILE:HD11	2.02	0.42
4:F:1308:ILE:HG21	5:G:379:PRO:HB2	2.01	0.42
6:H:45:LYS:HA	6:H:45:LYS:HD3	1.89	0.42
4:F:60:GLN:O	4:F:476:LYS:NZ	2.40	0.42

Continued on next page...

Continued from previous page...

Atom-1	Atom-2	Interatomic distance (Å)	Clash overlap (Å)
4:F:197:ARG:HD3	4:F:200:ARG:HA	2.02	0.42
4:F:750:ILE:HD13	4:F:963:GLU:HG2	2.02	0.42
4:F:976:ARG:O	4:F:980:VAL:HG23	2.20	0.42
4:F:997:TRP:HE3	4:F:1000:LEU:HD22	1.85	0.42
5:G:528:THR:N	5:G:532:GLU:OE1	2.45	0.42
5:G:864:LEU:HD11	5:G:869:CYS:HB3	2.02	0.42
6:H:29:GLN:O	6:H:33:GLY:N	2.42	0.42
5:G:111:THR:HG21	5:G:303:VAL:HB	2.02	0.41
5:G:959:LYS:HB3	5:G:983:LYS:HZ2	1.85	0.41
3:E:197:ASP:OD1	3:E:197:ASP:N	2.44	0.41
4:F:151:ARG:HH12	4:F:175:ARG:HH21	1.67	0.41
4:F:338:THR:HG23	4:F:343:HIS:O	2.21	0.41
4:F:367:TYR:O	4:F:371:ARG:N	2.29	0.41
5:G:510:LEU:HA	5:G:513:MET:HG2	2.02	0.41
1:A:29:DA:H2''	1:A:30:DA:H5''	2.01	0.41
4:F:12:ARG:O	4:F:1157:GLN:NE2	2.43	0.41
4:F:590:PRO:HB3	4:F:605:TYR:HE1	1.84	0.41
5:G:1259:GLN:OE1	5:G:1262:ARG:NH1	2.53	0.41
4:F:452:ARG:HB3	4:F:586:PHE:CE1	2.55	0.41
4:F:560:PRO:HG3	5:G:773:PHE:CD1	2.55	0.41
4:F:724:VAL:CG1	4:F:727:VAL:HG23	2.50	0.41
4:F:1065:LYS:HD3	4:F:1073:LYS:NZ	2.35	0.41
5:G:367:GLY:CA	5:G:448:GLN:HB2	2.48	0.41
5:G:370:LYS:HG2	5:G:441:LEU:HB3	2.02	0.41
5:G:1173:ARG:NH2	5:G:1192:LYS:O	2.53	0.41
4:F:176:ILE:HG23	4:F:405:PHE:CZ	2.40	0.41
4:F:1107:MET:HE2	5:G:763:PHE:CE2	2.55	0.41
5:G:364:HIS:HB3	5:G:487:THR:HG23	2.03	0.41
4:F:685:MET:SD	4:F:1073:LYS:HB2	2.60	0.41
4:F:753:LEU:HB3	4:F:767:GLN:HB2	2.03	0.41
5:G:885:VAL:HG12	5:G:894:VAL:HG11	2.03	0.41
5:G:416:ILE:HD13	5:G:441:LEU:HG	2.02	0.41
5:G:538:ARG:HD2	5:G:538:ARG:HA	1.84	0.41
5:G:1136:GLY:C	5:G:1139:PRO:HD2	2.40	0.41
2:B:2:DT:H6	2:B:2:DT:H2'	1.72	0.41
4:F:100:LEU:HD12	4:F:122:VAL:HG21	2.02	0.41
4:F:515:MET:HA	4:F:526:HIS:CE1	2.56	0.41
4:F:812:PHE:HE1	5:G:504:GLN:HB2	1.83	0.41
4:F:1072:ASN:HD22	4:F:1111:GLN:NE2	2.19	0.41
4:F:1073:LYS:NZ	5:G:463:GLY:HA3	2.36	0.41
5:G:250:ARG:HG2	5:G:266:ASN:ND2	2.36	0.41

Continued on next page...

Continued from previous page...

Atom-1	Atom-2	Interatomic distance (Å)	Clash overlap (Å)
1:A:10:DC:H41	5:G:316:ILE:HG12	1.85	0.41
3:D:79:LEU:HD11	4:F:1057:LYS:NZ	2.36	0.41
3:E:57:THR:HG22	3:E:175:ALA:HB2	2.03	0.41
4:F:990:ASP:OD1	4:F:991:LYS:N	2.51	0.41
4:F:1134:GLN:OE1	4:F:1136:GLN:NE2	2.54	0.41
4:F:1171[B]:ARG:HE	4:F:1171[B]:ARG:HB3	1.53	0.41
5:G:102:MET:SD	5:G:246:PRO:HD3	2.60	0.41
5:G:1060:VAL:HG22	5:G:1106:ILE:HD12	2.03	0.41
4:F:14:ASP:HB3	4:F:1157:GLN:HB2	2.03	0.41
5:G:179:LYS:HZ3	5:G:183:GLU:HG3	1.86	0.41
5:G:707:ILE:HD13	5:G:713:GLU:HG3	2.02	0.41
4:F:742:TYR:O	4:F:745:GLU:HG2	2.20	0.40
4:F:878:THR:HA	4:F:925:SER:HA	2.02	0.40
4:F:1316:GLU:N	4:F:1317:PRO:HD2	2.36	0.40
5:G:1068:THR:HG23	5:G:1070:GLY:H	1.86	0.40
4:F:196:VAL:N	4:F:204:LEU:O	2.43	0.40
4:F:1105:SER:HA	5:G:736:GLN:OE1	2.20	0.40
4:F:1151:LEU:HD11	4:F:1197:GLU:HB3	2.03	0.40
4:F:12:ARG:HA	4:F:1181:PRO:HB2	2.02	0.40
4:F:317:LEU:HD23	4:F:317:LEU:HA	1.78	0.40
4:F:395:TYR:CE2	4:F:420:LEU:HG	2.56	0.40
4:F:404:LYS:HD3	4:F:404:LYS:HA	1.94	0.40
4:F:1243:MET:CE	5:G:372:MET:HG3	2.52	0.40
4:F:1186:VAL:HG23	4:F:1187:PHE:HD1	1.87	0.40
4:F:1278:LEU:HD12	4:F:1287:LEU:HD23	2.04	0.40
5:G:496:GLY:HA2	5:G:903:LEU:O	2.22	0.40
5:G:732:GLY:HA2	5:G:736:GLN:OE1	2.22	0.40
4:F:802:VAL:HA	4:F:1096:ILE:O	2.21	0.40
4:F:1125:GLY:HA3	4:F:1179:GLY:HA2	2.03	0.40
5:G:1154:ALA:H	5:G:1215:GLU:HA	1.87	0.40
5:G:1263:LYS:NZ	5:G:1281:GLU:HG2	2.36	0.40

There are no symmetry-related clashes.

5.3 Torsion angles [i](#)

5.3.1 Protein backbone [i](#)

In the following table, the Percentiles column shows the percent Ramachandran outliers of the chain as a percentile score with respect to all PDB entries followed by that with respect to all EM entries.

The Analysed column shows the number of residues for which the backbone conformation was analysed, and the total number of residues.

Mol	Chain	Analysed	Favoured	Allowed	Outliers	Percentiles	
3	D	227/239 (95%)	225 (99%)	2 (1%)	0	100	100
3	E	216/239 (90%)	209 (97%)	7 (3%)	0	100	100
4	F	1318/1342 (98%)	1278 (97%)	40 (3%)	0	100	100
5	G	1322/1407 (94%)	1281 (97%)	41 (3%)	0	100	100
6	H	71/91 (78%)	69 (97%)	2 (3%)	0	100	100
All	All	3154/3318 (95%)	3062 (97%)	92 (3%)	0	100	100

There are no Ramachandran outliers to report.

5.3.2 Protein sidechains [i](#)

In the following table, the Percentiles column shows the percent sidechain outliers of the chain as a percentile score with respect to all PDB entries followed by that with respect to all EM entries.

The Analysed column shows the number of residues for which the sidechain conformation was analysed, and the total number of residues.

Mol	Chain	Analysed	Rotameric	Outliers	Percentiles	
3	D	197/206 (96%)	197 (100%)	0	100	100
3	E	188/206 (91%)	188 (100%)	0	100	100
4	F	1141/1157 (99%)	1140 (100%)	1 (0%)	93	98
5	G	1116/1168 (96%)	1113 (100%)	3 (0%)	92	97
6	H	63/75 (84%)	63 (100%)	0	100	100
All	All	2705/2812 (96%)	2701 (100%)	4 (0%)	93	98

All (4) residues with a non-rotameric sidechain are listed below:

Mol	Chain	Res	Type
4	F	327	GLN
5	G	250	ARG
5	G	901	ARG
5	G	951	GLN

Sometimes sidechains can be flipped to improve hydrogen bonding and reduce clashes. All (8) such sidechains are listed below:

Mol	Chain	Res	Type
3	E	132	HIS
4	F	150	HIS
4	F	1061	GLN
4	F	1111	GLN
4	F	1136	GLN
5	G	364	HIS
5	G	424	ASN
5	G	865	HIS

5.3.3 RNA [i](#)

Mol	Chain	Analysed	Backbone Outliers	Pucker Outliers
7	R	13/19 (68%)	3 (23%)	0

All (3) RNA backbone outliers are listed below:

Mol	Chain	Res	Type
7	R	10	C
7	R	19	G
7	R	20	A

There are no RNA pucker outliers to report.

5.4 Non-standard residues in protein, DNA, RNA chains [i](#)

1 non-standard protein/DNA/RNA residue is modelled in this entry.

In the following table, the Counts columns list the number of bonds (or angles) for which Mogul statistics could be retrieved, the number of bonds (or angles) that are observed in the model and the number of bonds (or angles) that are defined in the Chemical Component Dictionary. The Link column lists molecule types, if any, to which the group is linked. The Z score for a bond length (or angle) is the number of standard deviations the observed value is removed from the expected value. A bond length (or angle) with $|Z| > 2$ is considered an outlier worth inspection. RMSZ is the root-mean-square of all Z scores of the bond lengths (or angles).

Mol	Type	Chain	Res	Link	Bond lengths			Bond angles		
					Counts	RMSZ	# Z > 2	Counts	RMSZ	# Z > 2
2	TTD	B	14	2	42,45,46	1.34	8 (19%)	62,74,77	2.61	20 (32%)

In the following table, the Chirals column lists the number of chiral outliers, the number of chiral centers analysed, the number of these observed in the model and the number defined in the Chemical Component Dictionary. Similar counts are reported in the Torsion and Rings columns.

'-' means no outliers of that kind were identified.

Mol	Type	Chain	Res	Link	Chirals	Torsions	Rings
2	TTD	B	14	2	-	13/22/109/110	0/5/6/6

All (8) bond length outliers are listed below:

Mol	Chain	Res	Type	Atoms	Z	Observed(Å)	Ideal(Å)
2	B	14	TTD	C5-C6	3.45	1.59	1.55
2	B	14	TTD	C2T-N3T	-3.11	1.32	1.38
2	B	14	TTD	C2-N3	-2.72	1.33	1.38
2	B	14	TTD	C1R-N1T	-2.71	1.42	1.45
2	B	14	TTD	C6T-C6	2.52	1.64	1.56
2	B	14	TTD	C6-N1	2.31	1.50	1.46
2	B	14	TTD	C2T-N1T	-2.19	1.32	1.36
2	B	14	TTD	C2'-C3R	-2.09	1.48	1.52

All (20) bond angle outliers are listed below:

Mol	Chain	Res	Type	Atoms	Z	Observed(°)	Ideal(°)
2	B	14	TTD	C2R-C1R-N1T	-7.63	105.28	115.59
2	B	14	TTD	O3'-C3'-C2R	-7.37	84.52	110.90
2	B	14	TTD	C6T-C6-N1	4.62	136.70	118.20
2	B	14	TTD	O4R-C1R-N1T	4.59	114.09	108.65
2	B	14	TTD	C5T-C5-C4	4.45	127.88	113.21
2	B	14	TTD	O4-C4-C5	-4.44	119.33	122.88
2	B	14	TTD	C5-C4-N3	4.38	119.88	116.06
2	B	14	TTD	C2'-C1'-N1	-4.36	109.70	115.59
2	B	14	TTD	C5T-C4T-N3T	4.32	119.82	116.06
2	B	14	TTD	O4'-C1'-N1	3.94	113.32	108.65
2	B	14	TTD	N3-C2-N1	-3.93	112.61	116.69
2	B	14	TTD	O4T-C4T-C5T	-3.88	119.78	122.88
2	B	14	TTD	C5-C5T-C4T	3.86	125.94	113.21
2	B	14	TTD	C5-C6-N1	-3.70	110.42	115.61
2	B	14	TTD	O4'-C1'-C2'	-3.08	100.43	106.25
2	B	14	TTD	C5A-C5-C5T	-3.05	107.57	116.39
2	B	14	TTD	O4P-PB-O3R	3.05	118.82	106.78
2	B	14	TTD	C3R-C2'-C1'	-2.99	97.20	102.91
2	B	14	TTD	C5M-C5T-C5	-2.93	107.91	116.39
2	B	14	TTD	C5T-C6T-N1T	-2.48	112.14	115.61

There are no chirality outliers.

All (13) torsion outliers are listed below:

Mol	Chain	Res	Type	Atoms
2	B	14	TTD	C3R-O3R-PB-O5P
2	B	14	TTD	O4'-C1'-N1-C2
2	B	14	TTD	O4R-C4'-C5R-O5R
2	B	14	TTD	O4'-C1'-N1-C6
2	B	14	TTD	C2'-C1'-N1-C6
2	B	14	TTD	C3'-C4'-C5R-O5R
2	B	14	TTD	C4'-C5R-O5R-PB
2	B	14	TTD	C5R-O5R-PB-O4P
2	B	14	TTD	C2'-C3R-O3R-PB
2	B	14	TTD	O4'-C4R-C5'-O5'
2	B	14	TTD	C3R-O3R-PB-O4P
2	B	14	TTD	C3R-C4R-C5'-O5'
2	B	14	TTD	C3R-O3R-PB-O5R

There are no ring outliers.

1 monomer is involved in 5 short contacts:

Mol	Chain	Res	Type	Clashes	Symm-Clashes
2	B	14	TTD	5	0

5.5 Carbohydrates [i](#)

There are no monosaccharides in this entry.

5.6 Ligand geometry [i](#)

Of 3 ligands modelled in this entry, 3 are monoatomic - leaving 0 for Mogul analysis.

There are no bond length outliers.

There are no bond angle outliers.

There are no chirality outliers.

There are no torsion outliers.

There are no ring outliers.

No monomer is involved in short contacts.

5.7 Other polymers [i](#)

There are no such residues in this entry.

5.8 Polymer linkage issues

There are no chain breaks in this entry.

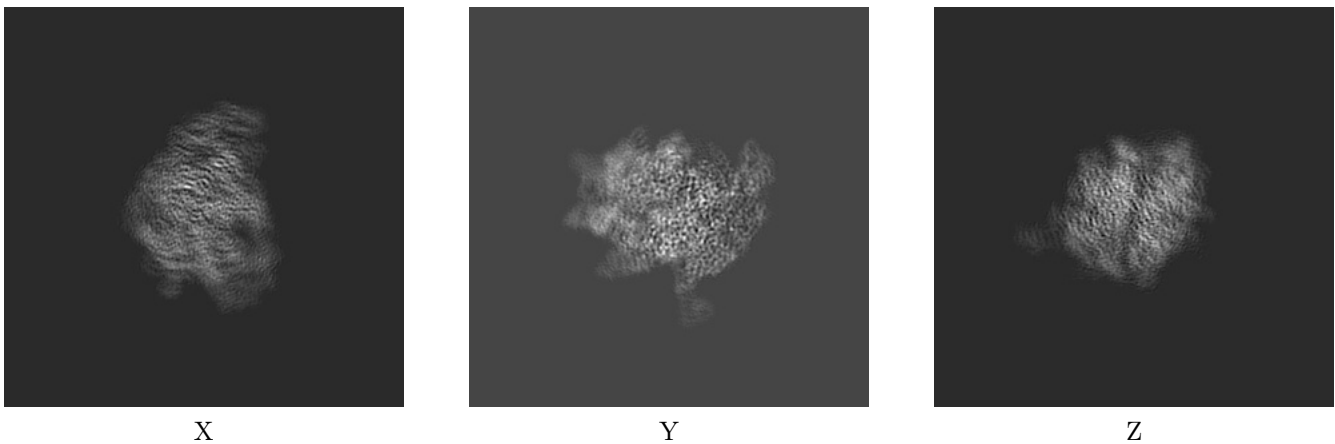
6 Map visualisation [i](#)

This section contains visualisations of the EMDB entry EMD-17586. These allow visual inspection of the internal detail of the map and identification of artifacts.

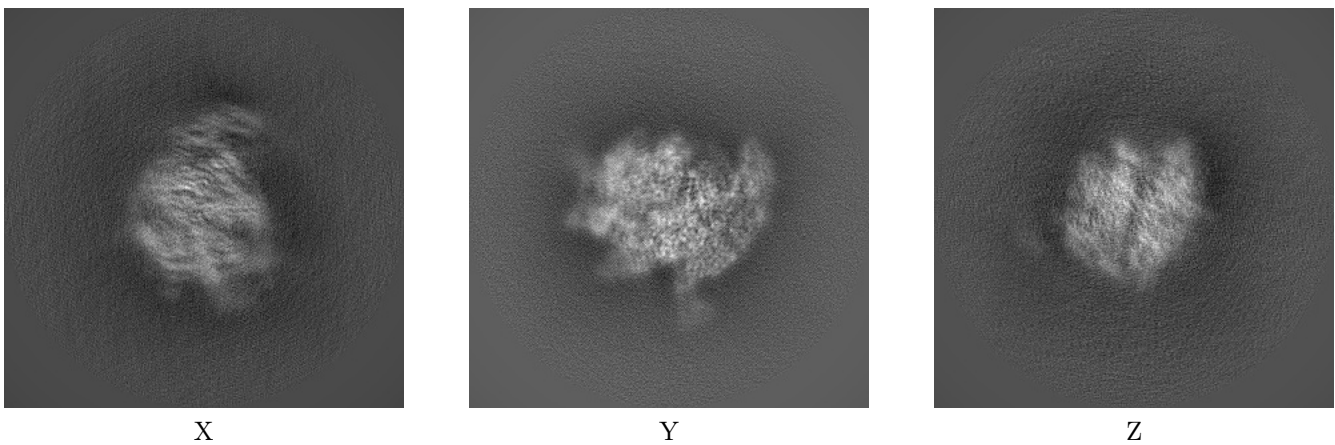
Images derived from a raw map, generated by summing the deposited half-maps, are presented below the corresponding image components of the primary map to allow further visual inspection and comparison with those of the primary map.

6.1 Orthogonal projections [i](#)

6.1.1 Primary map



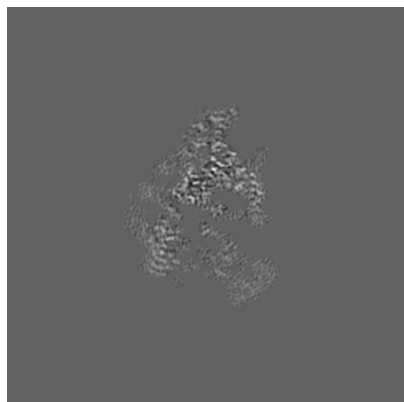
6.1.2 Raw map



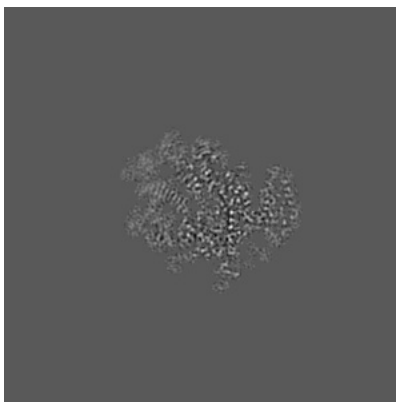
The images above show the map projected in three orthogonal directions.

6.2 Central slices [i](#)

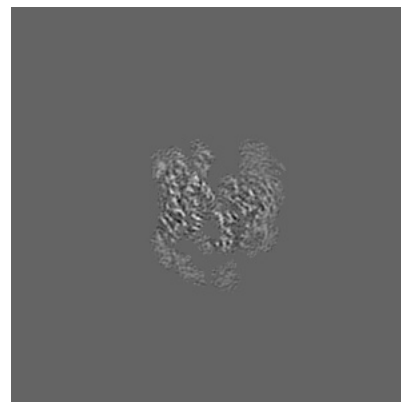
6.2.1 Primary map



X Index: 250

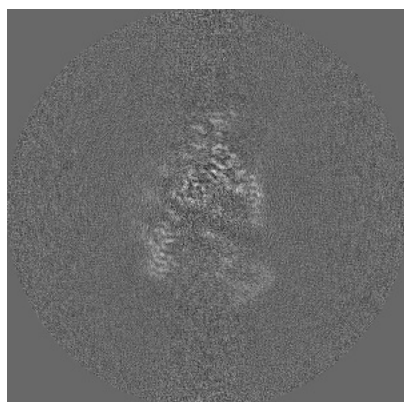


Y Index: 250

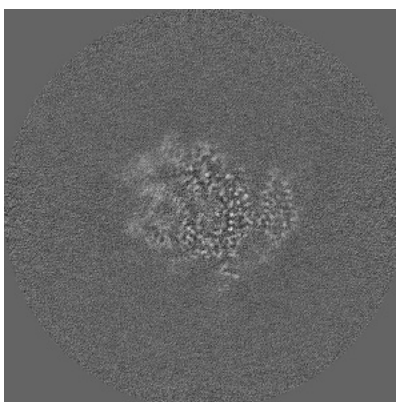


Z Index: 250

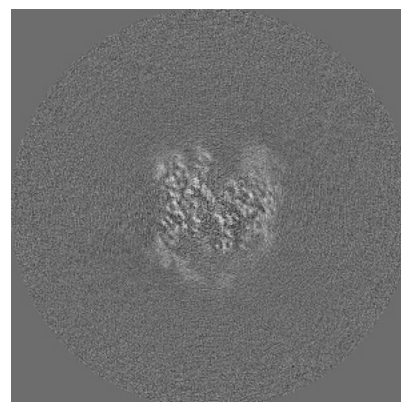
6.2.2 Raw map



X Index: 250



Y Index: 250

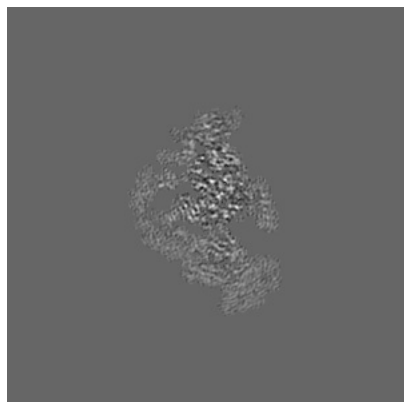


Z Index: 250

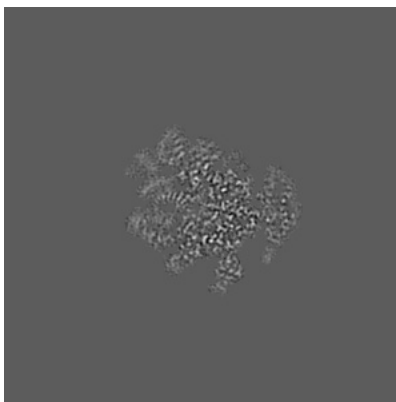
The images above show central slices of the map in three orthogonal directions.

6.3 Largest variance slices [i](#)

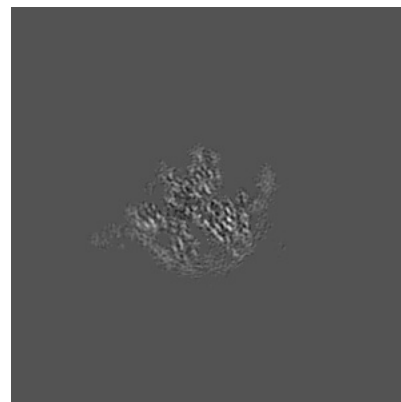
6.3.1 Primary map



X Index: 230

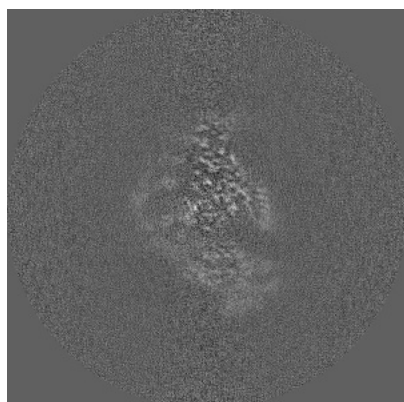


Y Index: 245

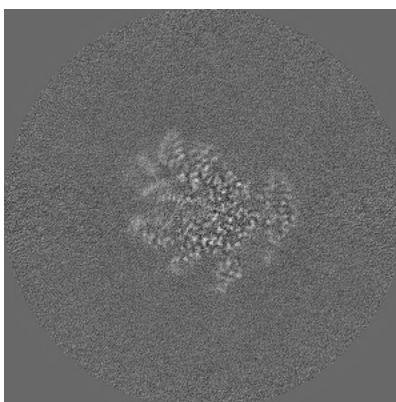


Z Index: 275

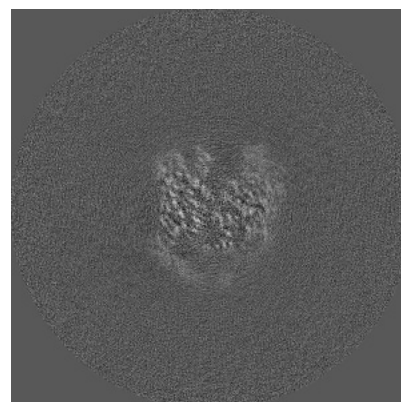
6.3.2 Raw map



X Index: 233



Y Index: 245

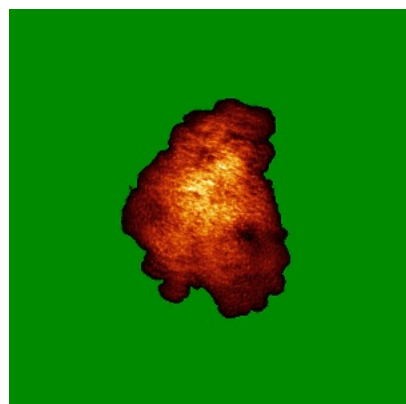


Z Index: 251

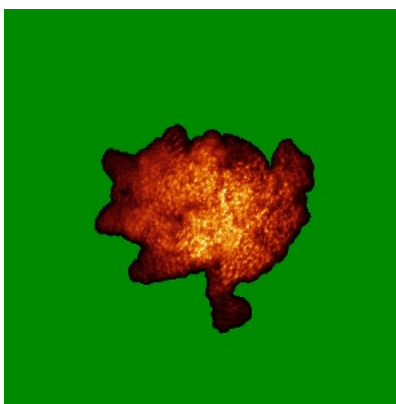
The images above show the largest variance slices of the map in three orthogonal directions.

6.4 Orthogonal standard-deviation projections (False-color) [i](#)

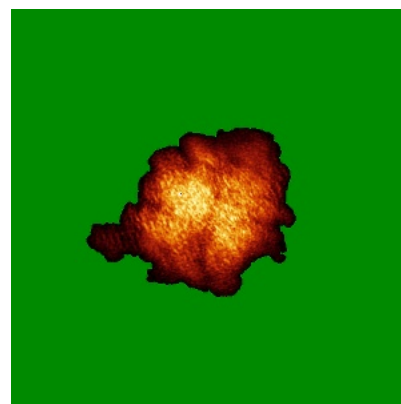
6.4.1 Primary map



X

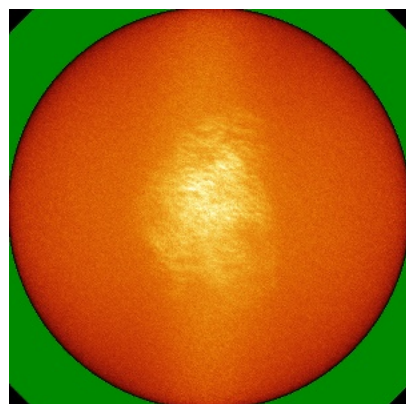


Y

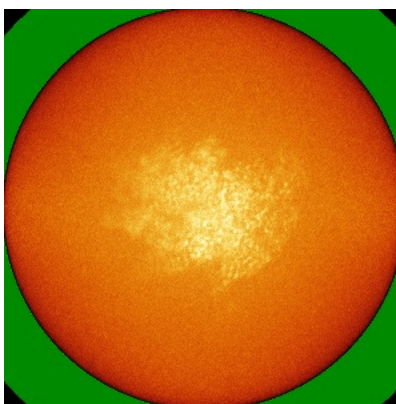


Z

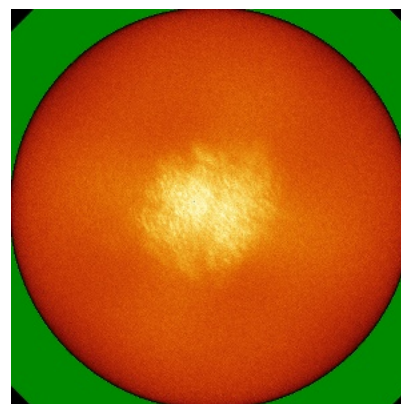
6.4.2 Raw map



X



Y

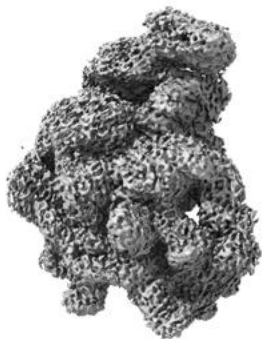


Z

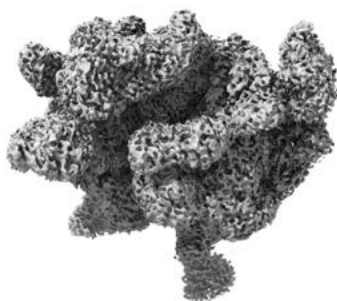
The images above show the map standard deviation projections with false color in three orthogonal directions. Minimum values are shown in green, max in blue, and dark to light orange shades represent small to large values respectively.

6.5 Orthogonal surface views [i](#)

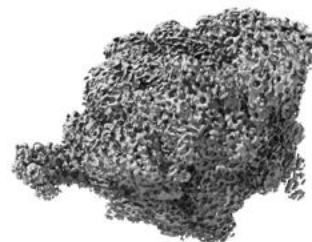
6.5.1 Primary map



X



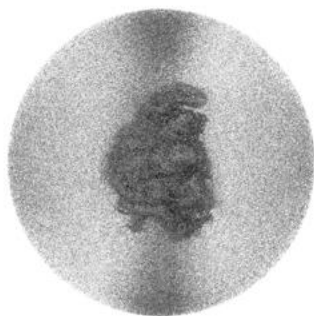
Y



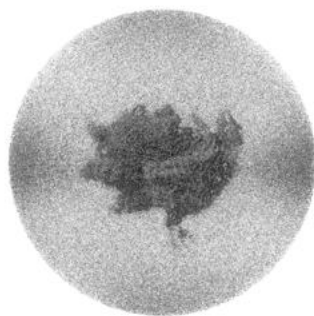
Z

The images above show the 3D surface view of the map at the recommended contour level 0.00102. These images, in conjunction with the slice images, may facilitate assessment of whether an appropriate contour level has been provided.

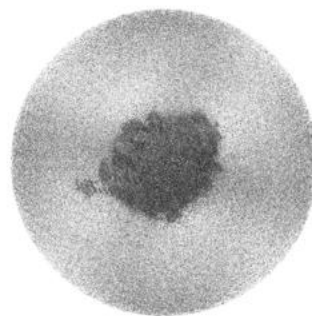
6.5.2 Raw map



X



Y



Z

These images show the 3D surface of the raw map. The raw map's contour level was selected so that its surface encloses the same volume as the primary map does at its recommended contour level.

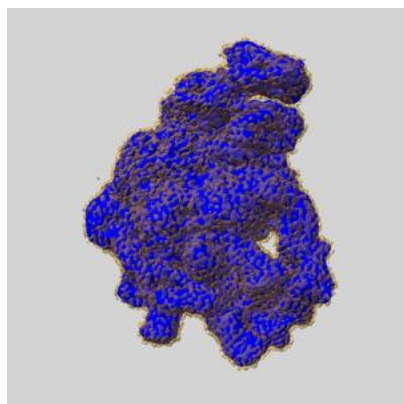
6.6 Mask visualisation [i](#)

This section shows the 3D surface view of the primary map at 50% transparency overlaid with the specified mask at 0% transparency

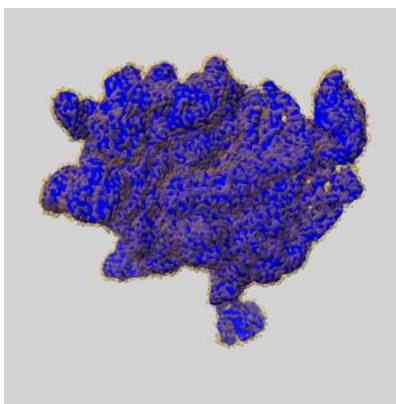
A mask typically either:

- Encompasses the whole structure
- Separates out a domain, a functional unit, a monomer or an area of interest from a larger structure

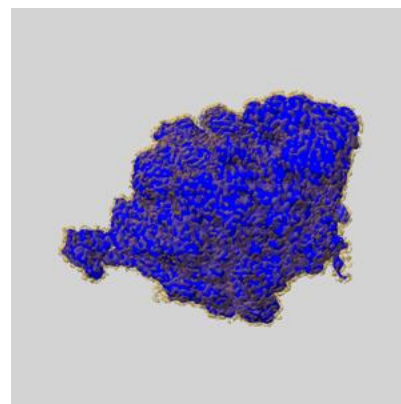
6.6.1 emd_17586_msk_1.map [i](#)



X



Y

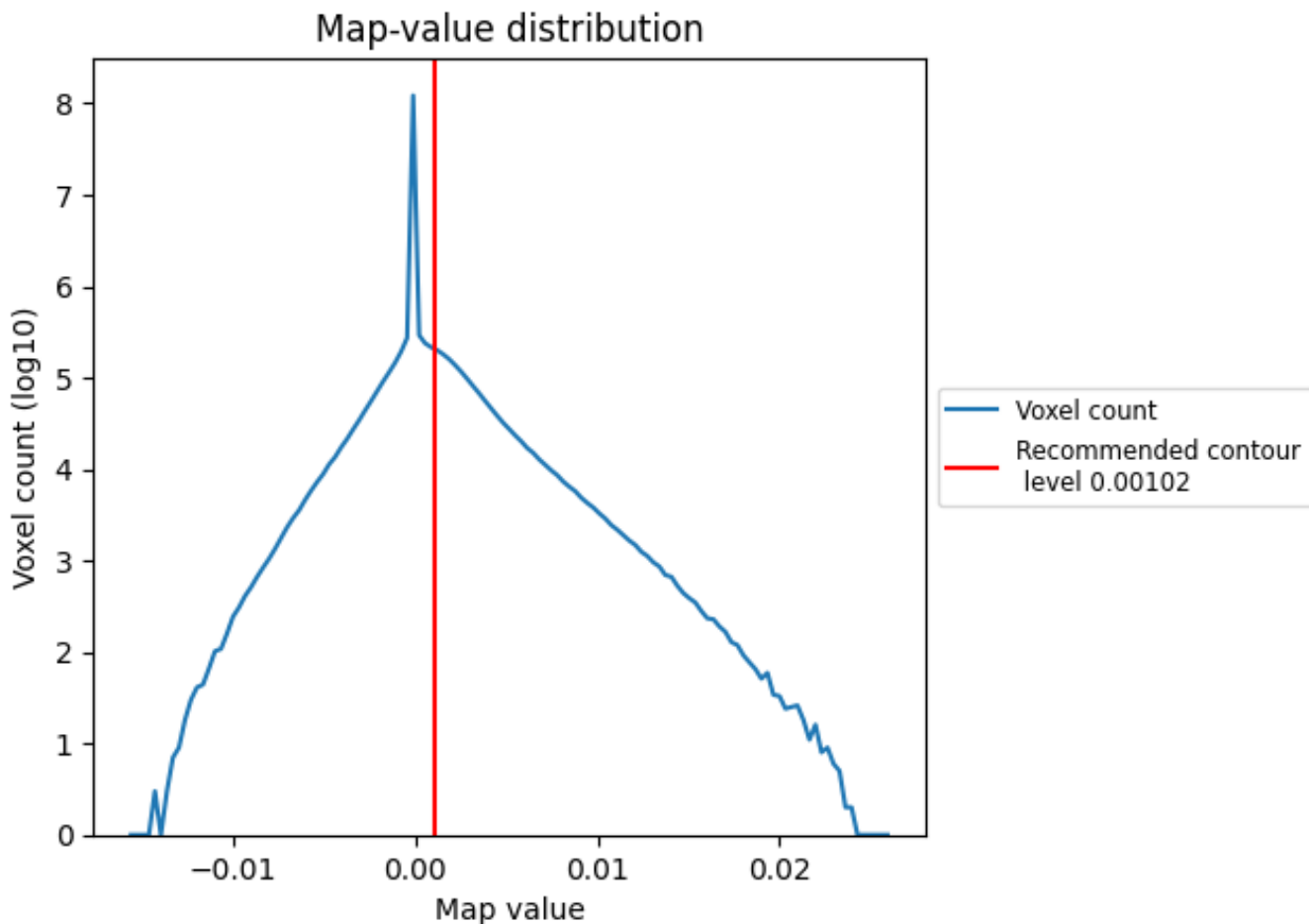


Z

7 Map analysis [i](#)

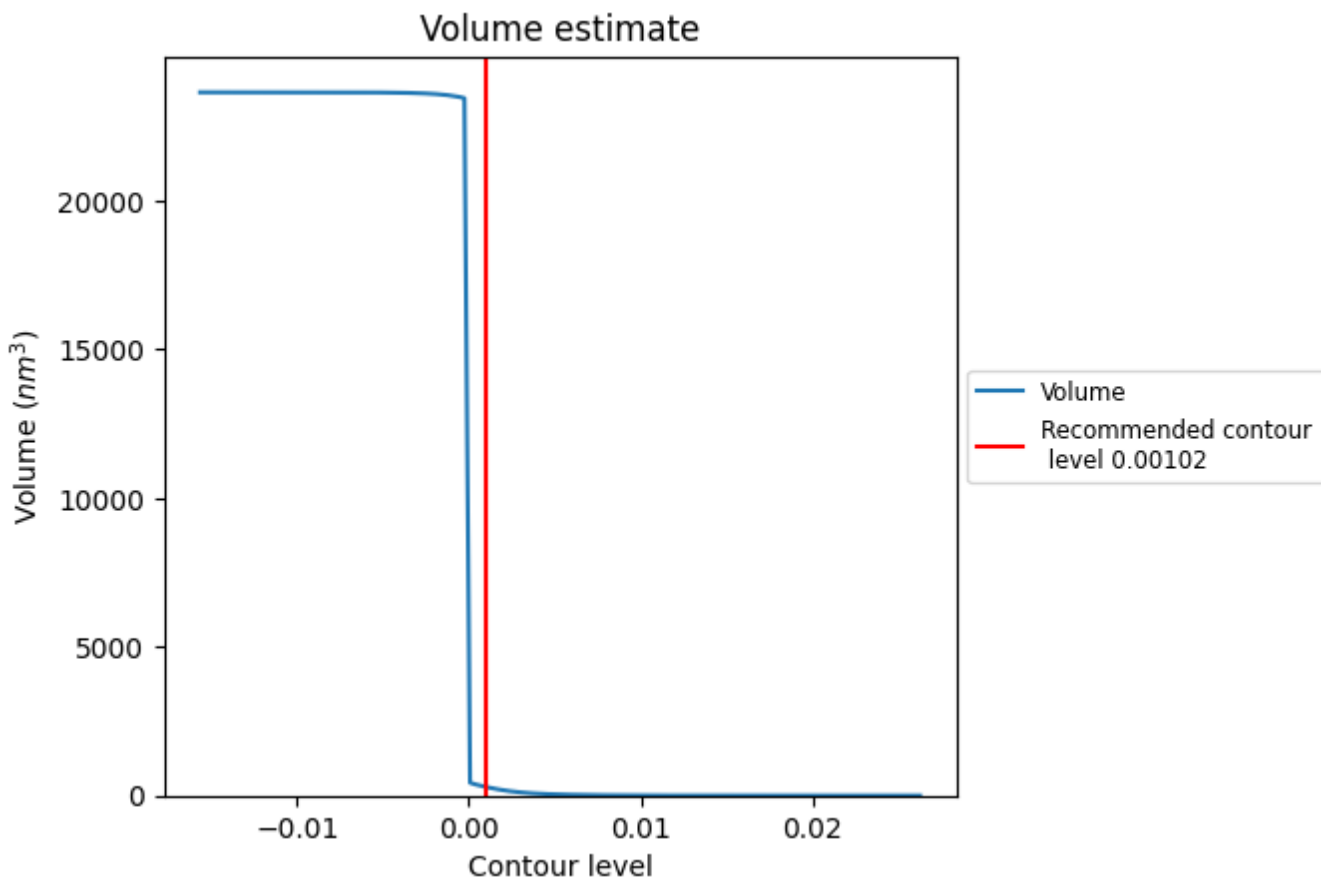
This section contains the results of statistical analysis of the map.

7.1 Map-value distribution [i](#)



The map-value distribution is plotted in 128 intervals along the x-axis. The y-axis is logarithmic. A spike in this graph at zero usually indicates that the volume has been masked.

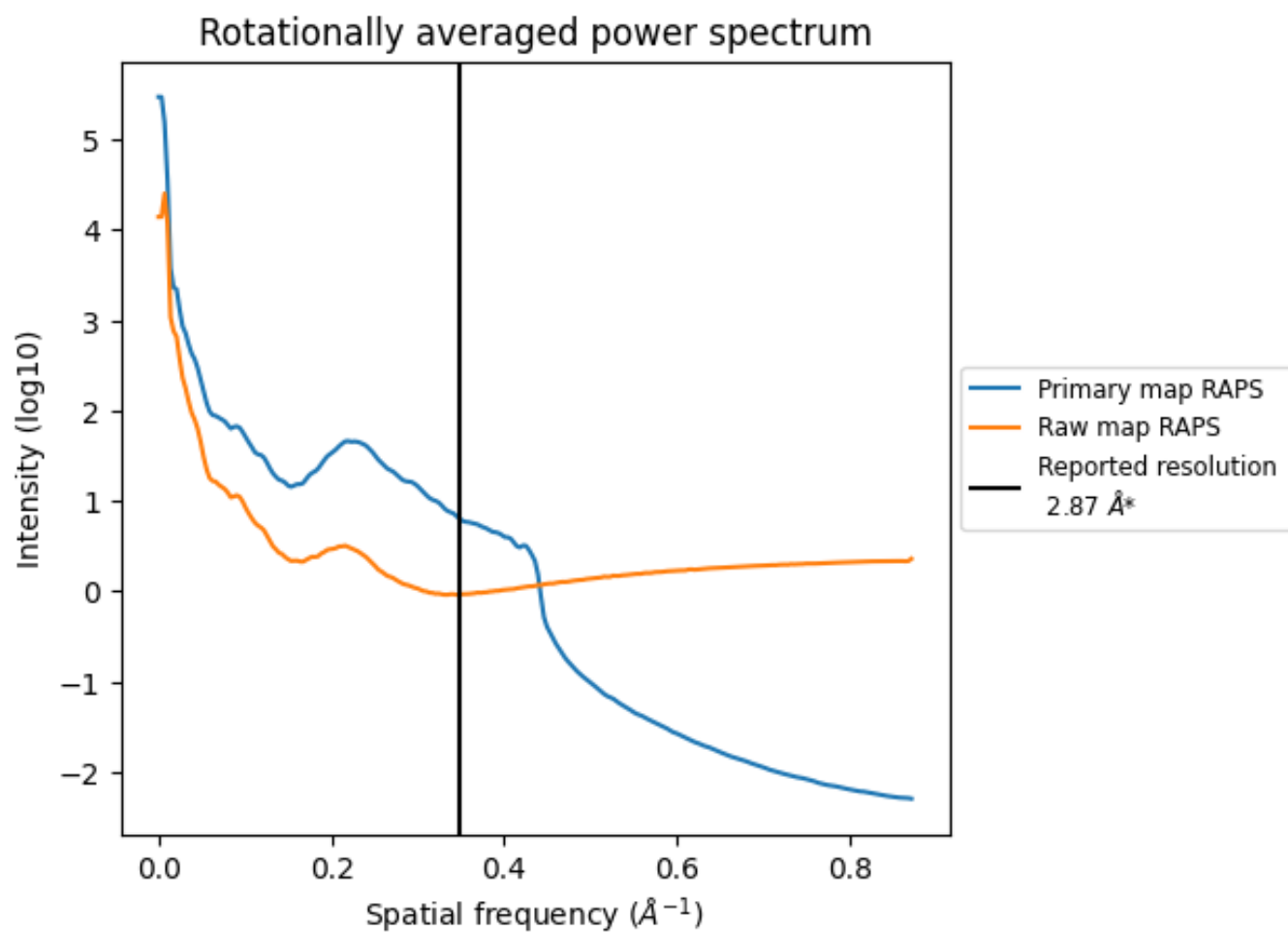
7.2 Volume estimate [i](#)



The volume at the recommended contour level is 288 nm³; this corresponds to an approximate mass of 260 kDa.

The volume estimate graph shows how the enclosed volume varies with the contour level. The recommended contour level is shown as a vertical line and the intersection between the line and the curve gives the volume of the enclosed surface at the given level.

7.3 Rotationally averaged power spectrum [i](#)

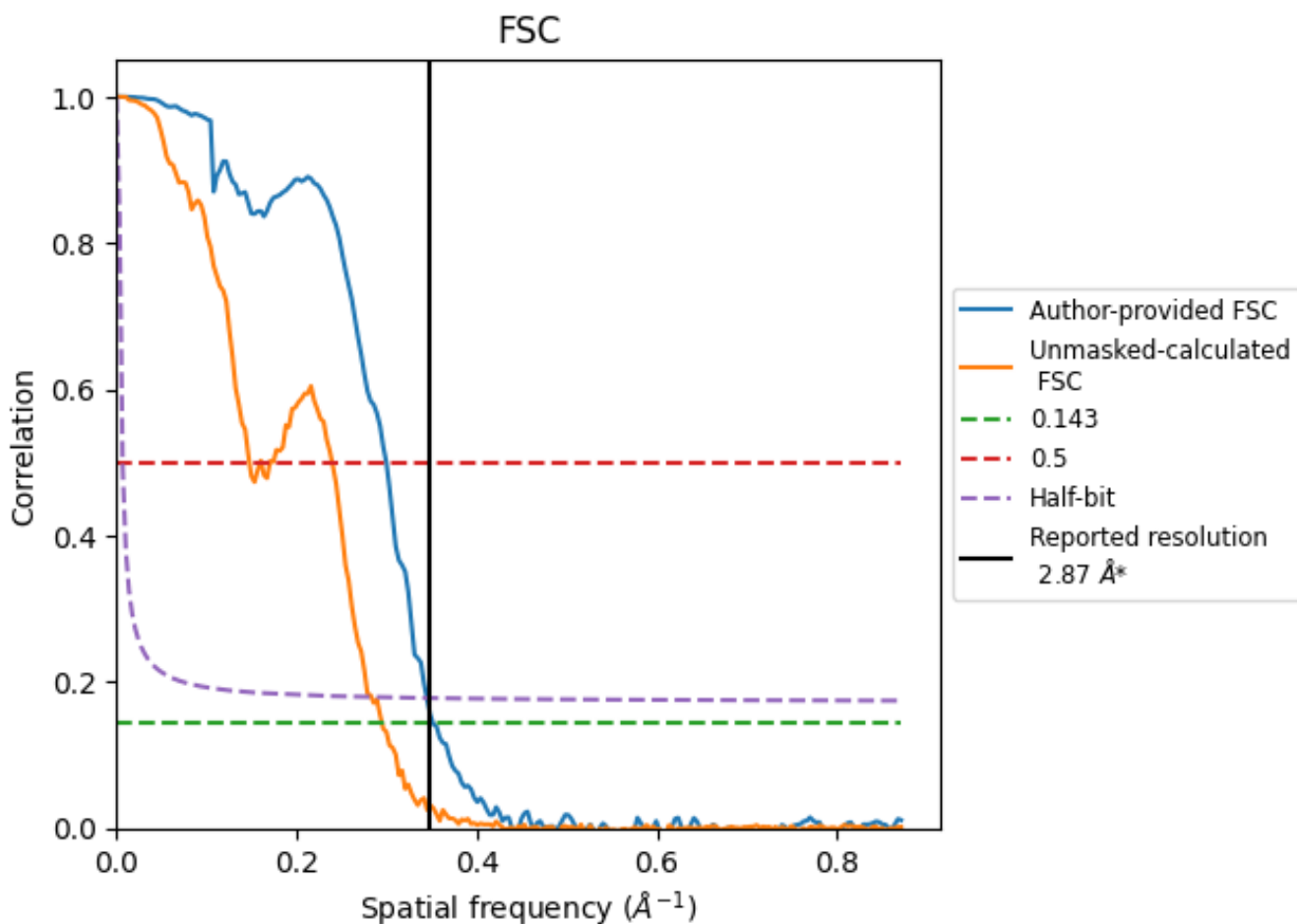


*Reported resolution corresponds to spatial frequency of 0.348 Å⁻¹

8 Fourier-Shell correlation [i](#)

Fourier-Shell Correlation (FSC) is the most commonly used method to estimate the resolution of single-particle and subtomogram-averaged maps. The shape of the curve depends on the imposed symmetry, mask and whether or not the two 3D reconstructions used were processed from a common reference. The reported resolution is shown as a black line. A curve is displayed for the half-bit criterion in addition to lines showing the 0.143 gold standard cut-off and 0.5 cut-off.

8.1 FSC [i](#)



*Reported resolution corresponds to spatial frequency of 0.348\AA^{-1}

8.2 Resolution estimates [i](#)

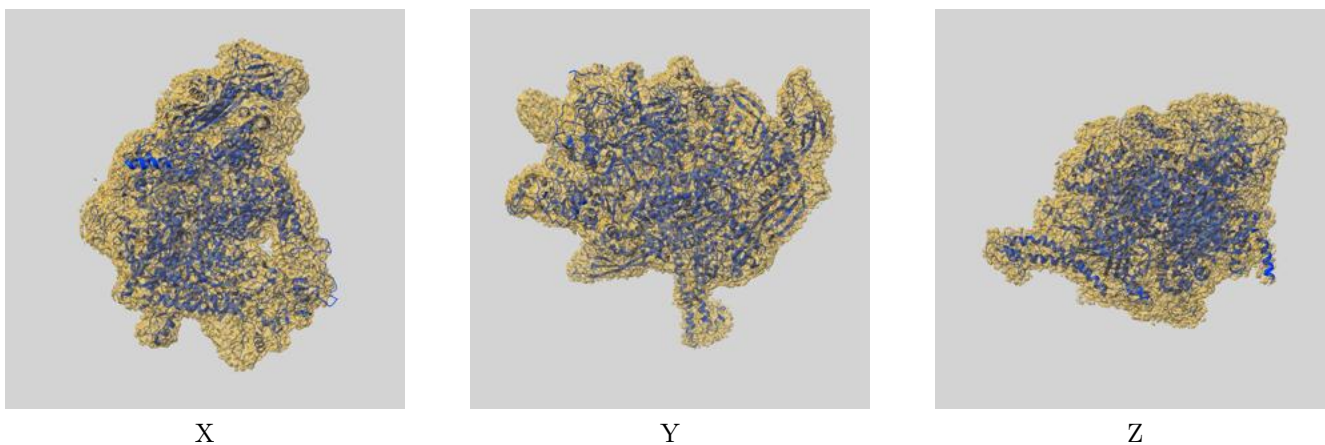
Resolution estimate (Å)	Estimation criterion (FSC cut-off)		
	0.143	0.5	Half-bit
Reported by author	2.87	-	-
Author-provided FSC curve	2.84	3.34	2.90
Unmasked-calculated*	3.39	6.78	3.53

*Resolution estimate based on FSC curve calculated by comparison of deposited half-maps. The value from deposited half-maps intersecting FSC 0.143 CUT-OFF 3.39 differs from the reported value 2.87 by more than 10 %

9 Map-model fit [i](#)

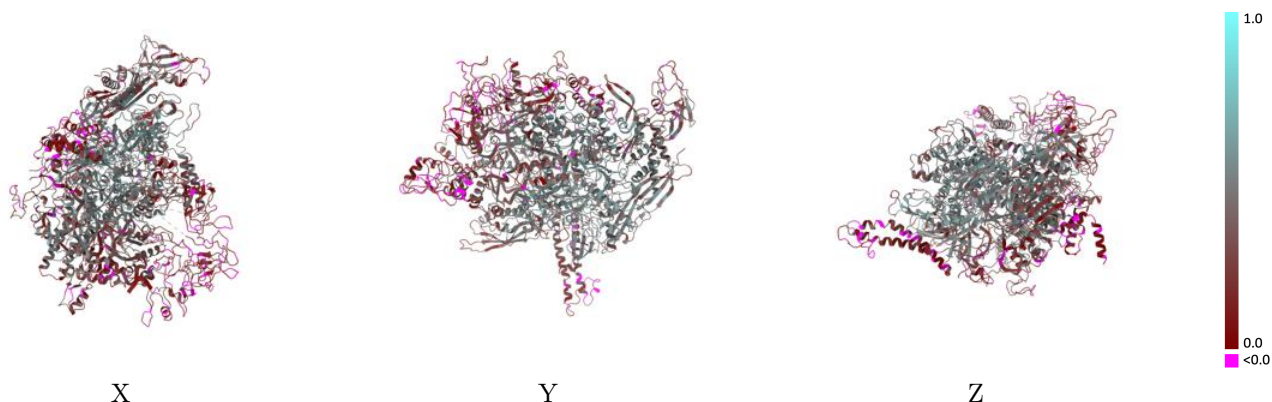
This section contains information regarding the fit between EMDB map EMD-17586 and PDB model 8PBL. Per-residue inclusion information can be found in section 3 on page 6.

9.1 Map-model overlay [i](#)



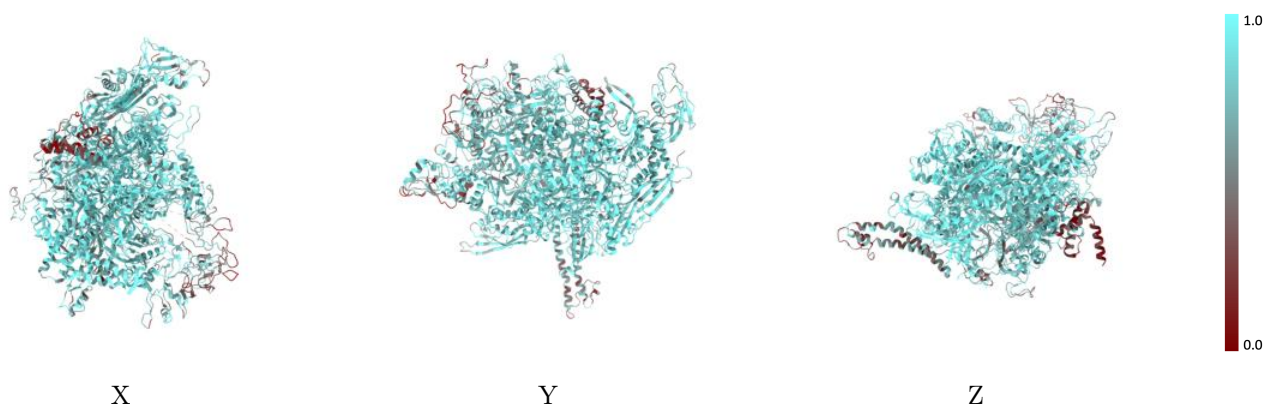
The images above show the 3D surface view of the map at the recommended contour level 0.00102 at 50% transparency in yellow overlaid with a ribbon representation of the model coloured in blue. These images allow for the visual assessment of the quality of fit between the atomic model and the map.

9.2 Q-score mapped to coordinate model [i](#)



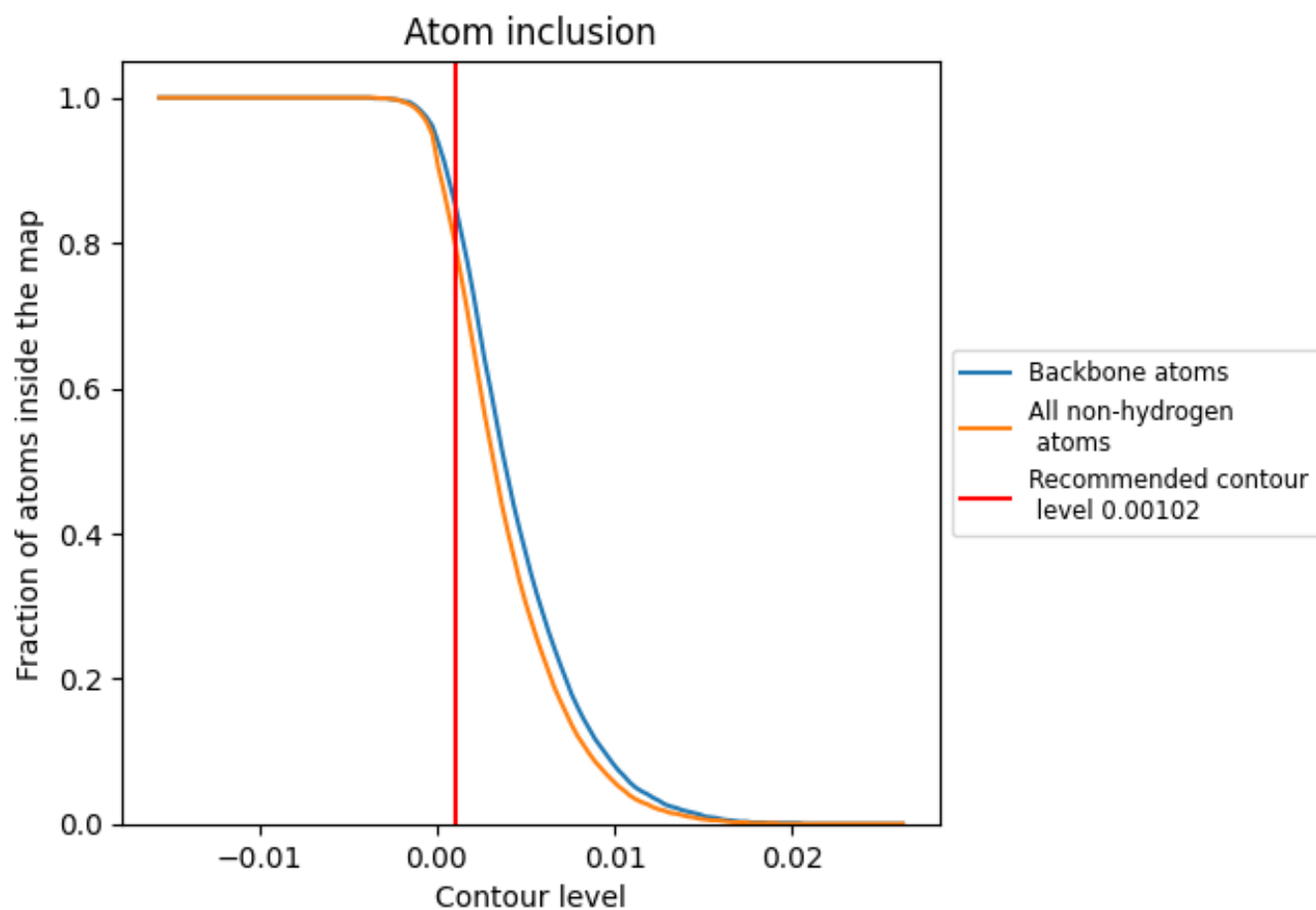
The images above show the model with each residue coloured according to its Q-score. This shows their resolvability in the map with higher Q-score values reflecting better resolvability. Please note: Q-score is calculating the resolvability of atoms, and thus high values are only expected at resolutions at which atoms can be resolved. Low Q-score values may therefore be expected for many entries.

9.3 Atom inclusion mapped to coordinate model [i](#)



The images above show the model with each residue coloured according to its atom inclusion. This shows to what extent they are inside the map at the recommended contour level (0.00102).



















9.4 Atom inclusion [i](#)



At the recommended contour level, 85% of all backbone atoms, 80% of all non-hydrogen atoms, are inside the map.

9.5 Map-model fit summary

The table lists the average atom inclusion at the recommended contour level (0.00102) and Q-score for the entire model and for each chain.

Chain	Atom inclusion	Q-score
All	 0.8000	 0.3460
A	 0.7790	 0.2090
B	 0.8770	 0.3560
D	 0.8450	 0.4290
E	 0.7590	 0.3170
F	 0.8250	 0.3710
G	 0.8030	 0.3360
H	 0.2280	 0.0400
R	 0.8090	 0.3460

