



Full wwPDB X-ray Structure Validation Report ⓘ

May 16, 2020 – 01:07 pm BST

PDB ID : 1PPB
Title : THE REFINED 1.9 ANGSTROMS CRYSTAL STRUCTURE OF HUMAN ALPHA-THROMBIN: INTERACTION WITH D-PHE-PRO-ARG CHLOROMETHYLKETONE AND SIGNIFICANCE OF THE TYR-PRO-PRO-TRP INSERTION SEGMENT
Authors : Bode, W.
Deposited on : 1991-10-24
Resolution : 1.92 Å(reported)

This is a Full wwPDB X-ray Structure Validation Report for a publicly released PDB entry.

We welcome your comments at validation@mail.wwpdb.org

A user guide is available at

<https://www.wwpdb.org/validation/2017/XrayValidationReportHelp>

with specific help available everywhere you see the ⓘ symbol.

The following versions of software and data (see [references ⓘ](#)) were used in the production of this report:

MolProbity : 4.02b-467
Mogul : 1.8.5 (274361), CSD as541be (2020)
Xtrriage (Phenix) : **NOT EXECUTED**
EDS : **NOT EXECUTED**
buster-report : 1.1.7 (2018)
Percentile statistics : 20191225.v01 (using entries in the PDB archive December 25th 2019)
Ideal geometry (proteins) : Engh & Huber (2001)
Ideal geometry (DNA, RNA) : Parkinson et al. (1996)
Validation Pipeline (wwPDB-VP) : 2.11

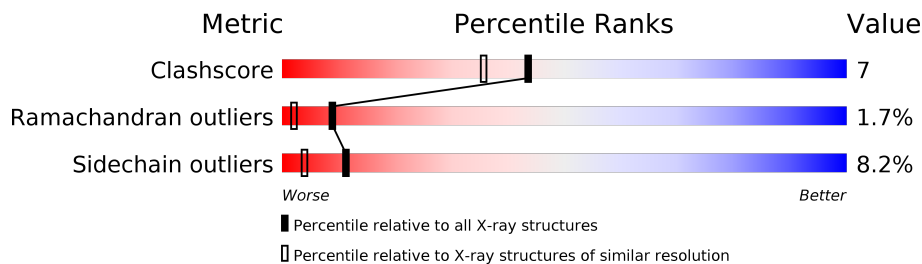
1 Overall quality at a glance

The following experimental techniques were used to determine the structure:

X-RAY DIFFRACTION

The reported resolution of this entry is 1.92 Å.

Percentile scores (ranging between 0-100) for global validation metrics of the entry are shown in the following graphic. The table shows the number of entries on which the scores are based.



Metric	Whole archive (#Entries)	Similar resolution (#Entries, resolution range(Å))
Clashscore	141614	8644 (1.94-1.90)
Ramachandran outliers	138981	8530 (1.94-1.90)
Sidechain outliers	138945	8530 (1.94-1.90)

The table below summarises the geometric issues observed across the polymeric chains and their fit to the electron density. The red, orange, yellow and green segments on the lower bar indicate the fraction of residues that contain outliers for ≥ 3 , 2, 1 and 0 types of geometric quality criteria respectively. A grey segment represents the fraction of residues that are not modelled. The numeric value for each fraction is indicated below the corresponding segment, with a dot representing fractions $\leq 5\%$.

Note EDS was not executed.

Mol	Chain	Length	Quality of chain
1	L	36	
2	H	259	

2 Entry composition [i](#)

There are 4 unique types of molecules in this entry. The entry contains 2819 atoms, of which 0 are hydrogens and 0 are deuteriums.

In the tables below, the ZeroOcc column contains the number of atoms modelled with zero occupancy, the AltConf column contains the number of residues with at least one atom in alternate conformation and the Trace column contains the number of residues modelled with at most 2 atoms.

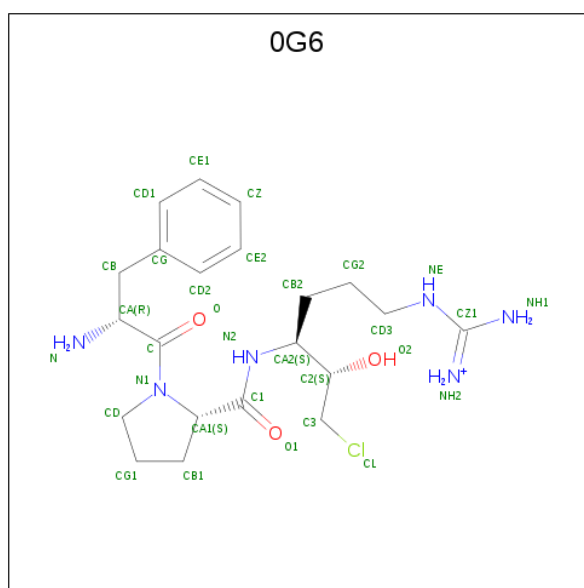
- Molecule 1 is a protein called ALPHA-THROMBIN (SMALL SUBUNIT).

Mol	Chain	Residues	Atoms					ZeroOcc	AltConf	Trace
			Total	C	N	O	S			
1	L	36	287	177	48	61	1	0	0	0

- Molecule 2 is a protein called ALPHA-THROMBIN (LARGE SUBUNIT).

Mol	Chain	Residues	Atoms					ZeroOcc	AltConf	Trace
			Total	C	N	O	S			
2	H	259	2093	1334	370	375	14	0	0	0

- Molecule 3 is D-phenylalanyl-N-[(2S,3S)-6-{{[amino(iminio)methyl]amino}}-1-chloro-2-hydroxyhexan-3-yl]-L-prolinamide (three-letter code: 0G6) (formula: C₂₁H₃₄ClN₆O₃).



Mol	Chain	Residues	Atoms				ZeroOcc	AltConf
			Total	C	N	O		
3	H	1	30	21	6	3	0	0

- Molecule 4 is water.

Mol	Chain	Residues	Atoms		ZeroOcc	AltConf
4	L	47	Total 47	O 47	0	0
4	H	362	Total 362	O 362	0	0

3 Residue-property plots [i](#)

These plots are drawn for all protein, RNA and DNA chains in the entry. The first graphic for a chain summarises the proportions of the various outlier classes displayed in the second graphic. The second graphic shows the sequence view annotated by issues in geometry. Residues are color-coded according to the number of geometric quality criteria for which they contain at least one outlier: green = 0, yellow = 1, orange = 2 and red = 3 or more. Stretches of 2 or more consecutive residues without any outlier are shown as a green connector. Residues present in the sample, but not in the model, are shown in grey.

Note EDS was not executed.

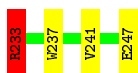
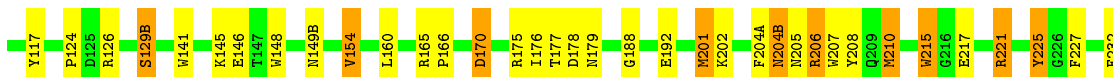
- Molecule 1: ALPHA-THROMBIN (SMALL SUBUNIT)

Chain L: 



- Molecule 2: ALPHA-THROMBIN (LARGE SUBUNIT)

Chain H: 



4 Data and refinement statistics

Xtrriage (Phenix) and EDS were not executed - this section is therefore incomplete.

Property	Value	Source
Space group	P 21 21 21	Depositor
Cell constants a, b, c, α , β , γ	87.74Å 67.81Å 61.07Å 90.00° 90.00° 90.00°	Depositor
Resolution (Å)	(Not available) – 1.92	Depositor
% Data completeness (in resolution range)	(Not available) ((Not available)-1.92)	Depositor
R_{merge}	(Not available)	Depositor
R_{sym}	(Not available)	Depositor
Refinement program	X-PLOR	Depositor
R, R_{free}	0.156 , (Not available)	Depositor
Estimated twinning fraction	No twinning to report.	Xtrriage
Total number of atoms	2819	wwPDB-VP
Average B, all atoms (Å ²)	29.0	wwPDB-VP

5 Model quality [i](#)

5.1 Standard geometry [i](#)

Bond lengths and bond angles in the following residue types are not validated in this section: 0G6

The Z score for a bond length (or angle) is the number of standard deviations the observed value is removed from the expected value. A bond length (or angle) with $|Z| > 5$ is considered an outlier worth inspection. RMSZ is the root-mean-square of all Z scores of the bond lengths (or angles).

Mol	Chain	Bond lengths		Bond angles	
		RMSZ	# Z >5	RMSZ	# Z >5
1	L	0.82	0/290	2.02	13/384 (3.4%)
2	H	0.91	0/2148	1.75	60/2903 (2.1%)
All	All	0.90	0/2438	1.78	73/3287 (2.2%)

Chiral center outliers are detected by calculating the chiral volume of a chiral center and verifying if the center is modelled as a planar moiety or with the opposite hand. A planarity outlier is detected by checking planarity of atoms in a peptide group, atoms in a mainchain group or atoms of a sidechain that are expected to be planar.

Mol	Chain	#Chirality outliers	#Planarity outliers
1	L	0	4
2	H	0	5
All	All	0	9

There are no bond length outliers.

All (73) bond angle outliers are listed below:

Mol	Chain	Res	Type	Atoms	Z	Observed(°)	Ideal(°)
2	H	97	ARG	NE-CZ-NH2	-10.89	114.85	120.30
2	H	141	TRP	CD1-CG-CD2	9.41	113.83	106.30
2	H	97	ARG	NE-CZ-NH1	9.29	124.94	120.30
2	H	221	ARG	NE-CZ-NH1	8.75	124.67	120.30
2	H	207	TRP	CD1-CG-CD2	8.51	113.11	106.30
2	H	237	TRP	CD1-CG-CD2	8.50	113.10	106.30
2	H	29	TRP	CD1-CG-CD2	8.31	112.95	106.30
2	H	148	TRP	CD1-CG-CD2	8.23	112.88	106.30
2	H	148	TRP	CE2-CD2-CG	-8.18	100.75	107.30
2	H	141	TRP	CE2-CD2-CG	-7.79	101.06	107.30
1	L	1(E)	SER	CA-C-N	7.75	131.69	116.20
1	L	14(D)	ARG	NE-CZ-NH1	7.68	124.14	120.30

Continued on next page...

Continued from previous page...

Mol	Chain	Res	Type	Atoms	Z	Observed(°)	Ideal(°)
2	H	51	TRP	CD1-CG-CD2	7.60	112.38	106.30
2	H	51	TRP	CE2-CD2-CG	-7.53	101.28	107.30
2	H	60(D)	TRP	CD1-CG-CD2	7.52	112.31	106.30
2	H	207	TRP	CE2-CD2-CG	-7.50	101.30	107.30
1	L	1(G)	PHE	N-CA-CB	-7.47	97.16	110.60
1	L	1(G)	PHE	CB-CG-CD2	-7.43	115.60	120.80
2	H	215	TRP	CD1-CG-CD2	7.25	112.10	106.30
2	H	117	TYR	CB-CG-CD1	-7.12	116.73	121.00
2	H	73	ARG	NE-CZ-NH2	-7.02	116.79	120.30
1	L	1(B)	ALA	N-CA-C	6.86	129.52	111.00
1	L	1(E)	SER	N-CA-C	6.84	129.47	111.00
2	H	96	TRP	CD1-CG-CD2	6.83	111.77	106.30
2	H	237	TRP	CE2-CD2-CG	-6.77	101.88	107.30
2	H	96	TRP	CE2-CD2-CG	-6.73	101.92	107.30
2	H	29	TRP	CE2-CD2-CG	-6.72	101.93	107.30
2	H	225	TYR	CB-CG-CD1	-6.66	117.00	121.00
2	H	60(D)	TRP	CE2-CD2-CG	-6.61	102.01	107.30
2	H	50	ARG	NE-CZ-NH2	-6.57	117.02	120.30
2	H	141	TRP	CG-CD2-CE3	6.54	139.79	133.90
1	L	4	ARG	CA-CB-CG	6.51	127.72	113.40
2	H	206	ARG	NE-CZ-NH1	6.48	123.54	120.30
2	H	208	TYR	CB-CG-CD2	-6.48	117.11	121.00
2	H	201	MET	CG-SD-CE	-6.47	89.85	100.20
2	H	101	ARG	NE-CZ-NH2	-6.38	117.11	120.30
2	H	51	TRP	CG-CD2-CE3	6.36	139.62	133.90
1	L	14(J)	TYR	CB-CG-CD2	-6.33	117.20	121.00
1	L	1(H)	THR	CA-C-N	6.29	131.03	117.20
2	H	215	TRP	CE2-CD2-CG	-6.28	102.28	107.30
2	H	165	ARG	NE-CZ-NH2	-6.26	117.17	120.30
2	H	154	VAL	CA-CB-CG2	-6.12	101.73	110.90
2	H	41	LEU	CA-CB-CG	6.08	129.29	115.30
2	H	148	TRP	CG-CD2-CE3	6.05	139.34	133.90
2	H	101	ARG	NE-CZ-NH1	5.99	123.29	120.30
2	H	60(A)	TYR	CB-CG-CD2	-5.95	117.43	121.00
1	L	1(E)	SER	O-C-N	-5.91	113.16	123.20
2	H	51	TRP	CB-CG-CD1	-5.90	119.33	127.00
2	H	221	ARG	NE-CZ-NH2	-5.89	117.35	120.30
2	H	29	TRP	CG-CD1-NE1	-5.78	104.32	110.10
2	H	75	ARG	NE-CZ-NH2	-5.66	117.47	120.30
2	H	237	TRP	CG-CD1-NE1	-5.60	104.50	110.10
2	H	247	GLU	CA-CB-CG	5.58	125.67	113.40
2	H	141	TRP	CB-CG-CD1	-5.56	119.77	127.00

Continued on next page...

Continued from previous page...

Mol	Chain	Res	Type	Atoms	Z	Observed(°)	Ideal(°)
2	H	141	TRP	CG-CD1-NE1	-5.54	104.56	110.10
2	H	73	ARG	NE-CZ-NH1	5.49	123.04	120.30
2	H	148	TRP	CB-CG-CD1	-5.48	119.88	127.00
2	H	26	MET	CG-SD-CE	5.41	108.86	100.20
2	H	241	VAL	N-CA-CB	5.41	123.40	111.50
2	H	49	ASP	CB-CG-OD1	5.37	123.13	118.30
2	H	106	MET	CG-SD-CE	-5.35	91.64	100.20
2	H	26	MET	CA-CB-CG	5.34	122.39	113.30
1	L	1(H)	THR	N-CA-C	-5.31	96.67	111.00
2	H	60(D)	TRP	CG-CD1-NE1	-5.28	104.82	110.10
2	H	154	VAL	CA-CB-CG1	5.28	118.81	110.90
2	H	93	ARG	NE-CZ-NH1	5.27	122.94	120.30
2	H	148	TRP	CG-CD1-NE1	-5.15	104.95	110.10
1	L	1(H)	THR	O-C-N	-5.14	114.48	122.70
2	H	204(B)	ASN	CB-CG-ND2	5.09	128.92	116.70
2	H	89	TYR	CB-CG-CD2	-5.06	117.96	121.00
2	H	221	ARG	CA-CB-CG	-5.04	102.32	113.40
2	H	233	ARG	NE-CZ-NH2	-5.04	117.78	120.30
1	L	14(L)	ASP	N-CA-C	-5.04	97.40	111.00

There are no chirality outliers.

All (9) planarity outliers are listed below:

Mol	Chain	Res	Type	Group
2	H	129(B)	SER	Peptide
2	H	204(A)	PHE	Peptide
2	H	206	ARG	Sidechain
2	H	217	GLU	Peptide
2	H	225	TYR	Sidechain
1	L	1(H)	THR	Peptide
1	L	14(J)	TYR	Peptide
1	L	14(K)	ILE	Peptide
1	L	14(M)	GLY	Peptide

5.2 Too-close contacts

In the following table, the Non-H and H(model) columns list the number of non-hydrogen atoms and hydrogen atoms in the chain respectively. The H(added) column lists the number of hydrogen atoms added and optimized by MolProbity. The Clashes column lists the number of clashes within the asymmetric unit, whereas Symm-Clashes lists symmetry related clashes.

Mol	Chain	Non-H	H(model)	H(added)	Clashes	Symm-Clashes
1	L	287	0	278	6	0
2	H	2093	0	2063	27	1
3	H	30	0	31	0	0
4	H	362	0	0	7	3
4	L	47	0	0	0	0
All	All	2819	0	2372	32	3

The all-atom clashscore is defined as the number of clashes found per 1000 atoms (including hydrogen atoms). The all-atom clashscore for this structure is 7.

All (32) close contacts within the same asymmetric unit are listed below, sorted by their clash magnitude.

Atom-1	Atom-2	Interatomic distance (Å)	Clash overlap (Å)
2:H:170:ASP:HB3	4:H:712:HOH:O	1.82	0.78
2:H:177:THR:HG22	2:H:179:ASN:H	1.51	0.76
2:H:106:MET:SD	4:H:618:HOH:O	2.47	0.73
2:H:76:TYR:CE2	2:H:77(A):ARG:HA	2.34	0.62
2:H:202:LYS:HE2	2:H:205:ASN:HB2	1.82	0.61
1:L:1(E):SER:HA	2:H:48:SER:OG	2.00	0.61
2:H:100:ASP:OD1	2:H:177:THR:HG21	2.02	0.60
2:H:35:ARG:HB2	2:H:41:LEU:HD23	1.83	0.60
2:H:126:ARG:HG2	2:H:232:PHE:HZ	1.69	0.57
2:H:18:GLU:HB2	2:H:188:GLY:HA2	1.86	0.56
2:H:60(E):ASP:HB2	4:H:494:HOH:O	2.05	0.56
2:H:176:ILE:HD12	2:H:227:PHE:CE2	2.42	0.55
2:H:77(A):ARG:HD3	4:H:378:HOH:O	2.08	0.54
2:H:178:ASP:O	2:H:233:ARG:HD3	2.08	0.53
2:H:31:VAL:HB	2:H:44:ALA:HB3	1.93	0.51
2:H:81:LYS:HG2	4:H:472:HOH:O	2.13	0.49
2:H:126:ARG:HG2	2:H:232:PHE:CZ	2.49	0.48
1:L:6:LEU:HA	1:L:10:LYS:HD3	1.96	0.47
2:H:24:ILE:HD12	2:H:24:ILE:H	1.80	0.46
2:H:124:PRO:HG3	2:H:210:MET:SD	2.55	0.46
2:H:85:LEU:HD22	2:H:106:MET:HB3	1.97	0.46
2:H:145:LYS:HD2	2:H:149(B):ASN:HB3	1.99	0.45
2:H:99:LEU:HD12	2:H:215:TRP:HB3	1.98	0.44
2:H:71:HIS:CE1	2:H:154:VAL:HG13	2.52	0.44
2:H:90:ILE:HD12	4:H:666:HOH:O	2.16	0.44
1:L:14(A):LYS:HG3	1:L:14(B):THR:HG23	1.99	0.44
2:H:76:TYR:HE2	2:H:77(A):ARG:HG3	1.85	0.42
1:L:14(J):TYR:O	1:L:14(K):ILE:HG13	2.20	0.42
2:H:201:MET:SD	2:H:210:MET:HG2	2.60	0.41

Continued on next page...

Continued from previous page...

Atom-1	Atom-2	Interatomic distance (Å)	Clash overlap (Å)
1:L:1(F):GLY:HA3	4:H:626:HOH:O	2.20	0.41
2:H:146:GLU:OE2	2:H:221:ARG:HD2	2.20	0.40
1:L:1(G):PHE:CD2	1:L:1(E):SER:HB2	2.56	0.40

All (3) symmetry-related close contacts are listed below. The label for Atom-2 includes the symmetry operator and encoded unit-cell translations to be applied.

Atom-1	Atom-2	Interatomic distance (Å)	Clash overlap (Å)
2:H:77(A):ARG:NH2	4:H:663:HOH:O[4_456]	1.52	0.68
4:H:375:HOH:O	4:H:538:HOH:O[4_456]	2.09	0.11
4:H:476:HOH:O	4:H:691:HOH:O[4_556]	2.17	0.03

5.3 Torsion angles [i](#)

5.3.1 Protein backbone [i](#)

In the following table, the Percentiles column shows the percent Ramachandran outliers of the chain as a percentile score with respect to all X-ray entries followed by that with respect to entries of similar resolution.

The Analysed column shows the number of residues for which the backbone conformation was analysed, and the total number of residues.

Mol	Chain	Analysed	Favoured	Allowed	Outliers	Percentiles	
1	L	34/36 (94%)	24 (71%)	5 (15%)	5 (15%)	0	0
2	H	257/259 (99%)	245 (95%)	12 (5%)	0	100	100
All	All	291/295 (99%)	269 (92%)	17 (6%)	5 (2%)	9	2

All (5) Ramachandran outliers are listed below:

Mol	Chain	Res	Type
1	L	1(B)	ALA
1	L	14(K)	ILE
1	L	1(F)	GLY
1	L	1(D)	GLY
1	L	1(C)	GLU

5.3.2 Protein sidechains [i](#)

In the following table, the Percentiles column shows the percent sidechain outliers of the chain as a percentile score with respect to all X-ray entries followed by that with respect to entries of similar resolution.

The Analysed column shows the number of residues for which the sidechain conformation was analysed, and the total number of residues.

Mol	Chain	Analysed	Rotameric	Outliers	Percentiles	
1	L	31/31 (100%)	28 (90%)	3 (10%)	8	2
2	H	225/225 (100%)	207 (92%)	18 (8%)	12	4
All	All	256/256 (100%)	235 (92%)	21 (8%)	11	4

All (21) residues with a non-rotameric sidechain are listed below:

Mol	Chain	Res	Type
1	L	5	PRO
1	L	6	LEU
1	L	9	LYS
2	H	40	LEU
2	H	41	LEU
2	H	46	LEU
2	H	50	ARG
2	H	60(C)	PRO
2	H	62	ASN
2	H	74	THR
2	H	75	ARG
2	H	81	LYS
2	H	129(B)	SER
2	H	160	LEU
2	H	166	PRO
2	H	170	ASP
2	H	175	ARG
2	H	192	GLU
2	H	204(B)	ASN
2	H	210	MET
2	H	233	ARG

Some sidechains can be flipped to improve hydrogen bonding and reduce clashes. All (3) such sidechains are listed below:

Mol	Chain	Res	Type
2	H	62	ASN

Continued on next page...

Continued from previous page...

Mol	Chain	Res	Type
2	H	71	HIS
2	H	239	GLN

5.3.3 RNA [i](#)

There are no RNA molecules in this entry.

5.4 Non-standard residues in protein, DNA, RNA chains [i](#)

There are no non-standard protein/DNA/RNA residues in this entry.

5.5 Carbohydrates [i](#)

There are no carbohydrates in this entry.

5.6 Ligand geometry [i](#)

1 ligand is modelled in this entry.

In the following table, the Counts columns list the number of bonds (or angles) for which Mogul statistics could be retrieved, the number of bonds (or angles) that are observed in the model and the number of bonds (or angles) that are defined in the Chemical Component Dictionary. The Link column lists molecule types, if any, to which the group is linked. The Z score for a bond length (or angle) is the number of standard deviations the observed value is removed from the expected value. A bond length (or angle) with $|Z| > 2$ is considered an outlier worth inspection. RMSZ is the root-mean-square of all Z scores of the bond lengths (or angles).

Mol	Type	Chain	Res	Link	Bond lengths			Bond angles		
					Counts	RMSZ	# Z > 2	Counts	RMSZ	# Z > 2
3	0G6	H	1	2	30,31,32	0.68	0	37,41,42	1.21	5 (13%)

In the following table, the Chirals column lists the number of chiral outliers, the number of chiral centers analysed, the number of these observed in the model and the number defined in the Chemical Component Dictionary. Similar counts are reported in the Torsion and Rings columns. '-' means no outliers of that kind were identified.

Mol	Type	Chain	Res	Link	Chirals	Torsions	Rings
3	0G6	H	1	2	-	1/31/41/43	0/2/2/2

There are no bond length outliers.

All (5) bond angle outliers are listed below:

Mol	Chain	Res	Type	Atoms	Z	Observed(°)	Ideal(°)
3	H	1	0G6	O-C-CA	-2.82	114.52	119.66
3	H	1	0G6	CA-C-N1	2.66	123.61	118.65
3	H	1	0G6	C-CA-N	-2.55	99.71	109.21
3	H	1	0G6	CG1-CD-N1	-2.17	99.43	103.25
3	H	1	0G6	CA1-C1-N2	2.02	121.08	116.58

There are no chirality outliers.

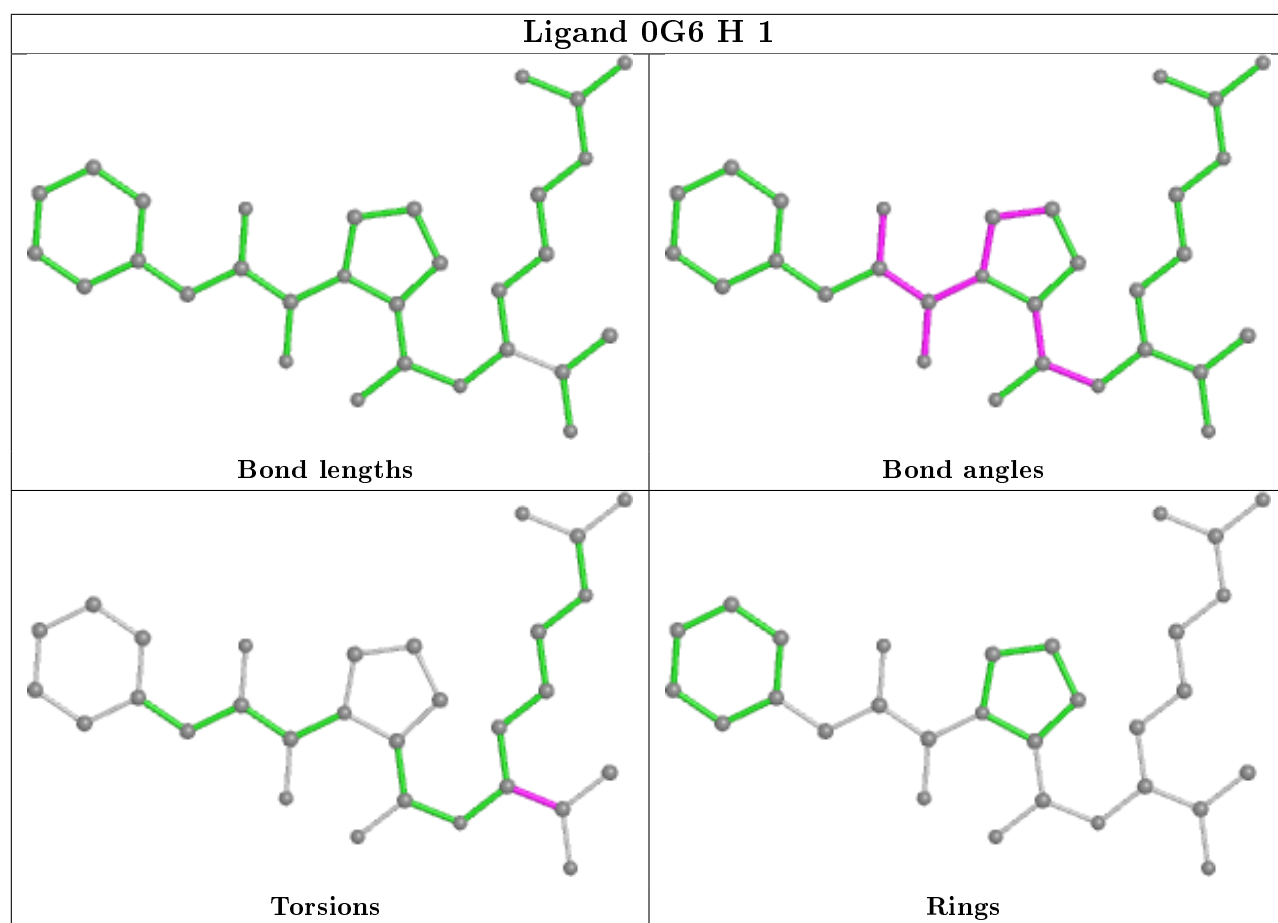
All (1) torsion outliers are listed below:

Mol	Chain	Res	Type	Atoms
3	H	1	0G6	O2-C2-CA2-CB2

There are no ring outliers.

No monomer is involved in short contacts.

The following is a two-dimensional graphical depiction of Mogul quality analysis of bond lengths, bond angles, torsion angles, and ring geometry for all instances of the Ligand of Interest. In addition, ligands with molecular weight > 250 and outliers as shown on the validation Tables will also be included. For torsion angles, if less than 5% of the Mogul distribution of torsion angles is within 10 degrees of the torsion angle in question, then that torsion angle is considered an outlier. Any bond that is central to one or more torsion angles identified as an outlier by Mogul will be highlighted in the graph. For rings, the root-mean-square deviation (RMSD) between the ring in question and similar rings identified by Mogul is calculated over all ring torsion angles. If the average RMSD is greater than 60 degrees and the minimal RMSD between the ring in question and any Mogul-identified rings is also greater than 60 degrees, then that ring is considered an outlier. The outliers are highlighted in purple. The color gray indicates Mogul did not find sufficient equivalents in the CSD to analyse the geometry.



5.7 Other polymers [\(i\)](#)

There are no such residues in this entry.

5.8 Polymer linkage issues [\(i\)](#)

There are no chain breaks in this entry.

6 Fit of model and data

6.1 Protein, DNA and RNA chains

EDS was not executed - this section is therefore empty.

6.2 Non-standard residues in protein, DNA, RNA chains

EDS was not executed - this section is therefore empty.

6.3 Carbohydrates

EDS was not executed - this section is therefore empty.

6.4 Ligands

EDS was not executed - this section is therefore empty.

6.5 Other polymers

EDS was not executed - this section is therefore empty.