



# wwPDB X-ray Structure Validation Summary Report

Jun 15, 2024 – 06:37 PM EDT

PDB ID : 4PRG  
Title : 0072 PARTIAL AGONIST PPAR GAMMA COCRYSTAL  
Authors : Milburn, M.V.  
Deposited on : 1999-05-07  
Resolution : 2.90 Å(reported)

This is a wwPDB X-ray Structure Validation Summary Report for a publicly released PDB entry.

We welcome your comments at [validation@mail.wwpdb.org](mailto:validation@mail.wwpdb.org)

A user guide is available at

<https://www.wwpdb.org/validation/2017/XrayValidationReportHelp>

with specific help available everywhere you see the  symbol.

The types of validation reports are described at

<http://www.wwpdb.org/validation/2017/FAQs#types>.

---

The following versions of software and data (see [references](#) ) were used in the production of this report:

MolProbity : 4.02b-467  
Mogul : 1.8.5 (274361), CSD as541be (2020)  
Xtriage (Phenix) : 1.13  
EDS : 2.37.1  
buster-report : 1.1.7 (2018)  
Percentile statistics : 20191225.v01 (using entries in the PDB archive December 25th 2019)  
Refmac : 5.8.0158  
CCP4 : 7.0.044 (Gargrove)  
Ideal geometry (proteins) : Engh & Huber (2001)  
Ideal geometry (DNA, RNA) : Parkinson et al. (1996)  
Validation Pipeline (wwPDB-VP) : 2.37.1

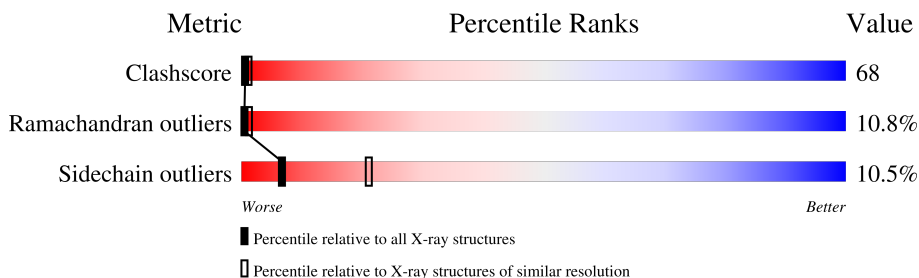
# 1 Overall quality at a glance

The following experimental techniques were used to determine the structure:

*X-RAY DIFFRACTION*

The reported resolution of this entry is 2.90 Å.

Percentile scores (ranging between 0-100) for global validation metrics of the entry are shown in the following graphic. The table shows the number of entries on which the scores are based.



Metric	Whole archive (#Entries)	Similar resolution (#Entries, resolution range(Å))
Clashscore	141614	2172 (2.90-2.90)
Ramachandran outliers	138981	2115 (2.90-2.90)
Sidechain outliers	138945	2117 (2.90-2.90)

The table below summarises the geometric issues observed across the polymeric chains and their fit to the electron density. The red, orange, yellow and green segments of the lower bar indicate the fraction of residues that contain outliers for  $\geq 3$ , 2, 1 and 0 types of geometric quality criteria respectively. A grey segment represents the fraction of residues that are not modelled. The numeric value for each fraction is indicated below the corresponding segment, with a dot representing fractions  $\leq 5\%$ .

Mol	Chain	Length	Quality of chain
1	A	270	20% 63% 15% .
1	B	270	20% 65% 14% .
1	C	270	17% 68% 14% .
1	D	270	22% 65% 12% .

## 2 Entry composition [i](#)

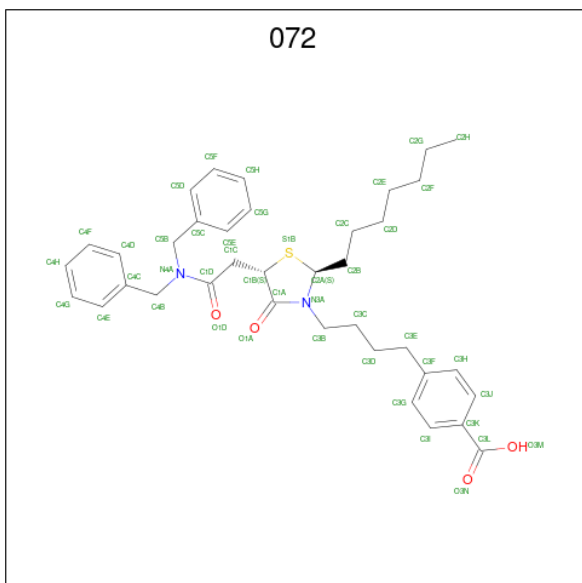
There are 2 unique types of molecules in this entry. The entry contains 8840 atoms, of which 0 are hydrogens and 0 are deuteriums.

In the tables below, the ZeroOcc column contains the number of atoms modelled with zero occupancy, the AltConf column contains the number of residues with at least one atom in alternate conformation and the Trace column contains the number of residues modelled with at most 2 atoms.

- Molecule 1 is a protein called PROTEIN (PEROXISOME PROLIFERATOR ACTIVATED RECEPTOR GAMMA).

Mol	Chain	Residues	Atoms					ZeroOcc	AltConf	Trace
			Total	C	N	O	S			
1	A	270	Total 2166	C 1397	N 354	O 405	S 10	0	0	0
1	B	270	Total 2166	C 1397	N 354	O 405	S 10	0	0	0
1	C	270	Total 2166	C 1397	N 354	O 405	S 10	0	0	0
1	D	270	Total 2166	C 1397	N 354	O 405	S 10	0	0	0

- Molecule 2 is (+/-)-(2S,5S)-3-(4-(4-CARBOXYPHENYL)BUTYL)-2-HEPTYL-4-OXO-5-T HIAZOLIDINE (three-letter code: 072) (formula: C<sub>37</sub>H<sub>46</sub>N<sub>2</sub>O<sub>4</sub>S).



Mol	Chain	Residues	Atoms					ZeroOcc	AltConf
			Total	C	N	O	S		
2	A	1	Total 44	C 37	N 2	O 4	S 1	0	0

*Continued on next page...*

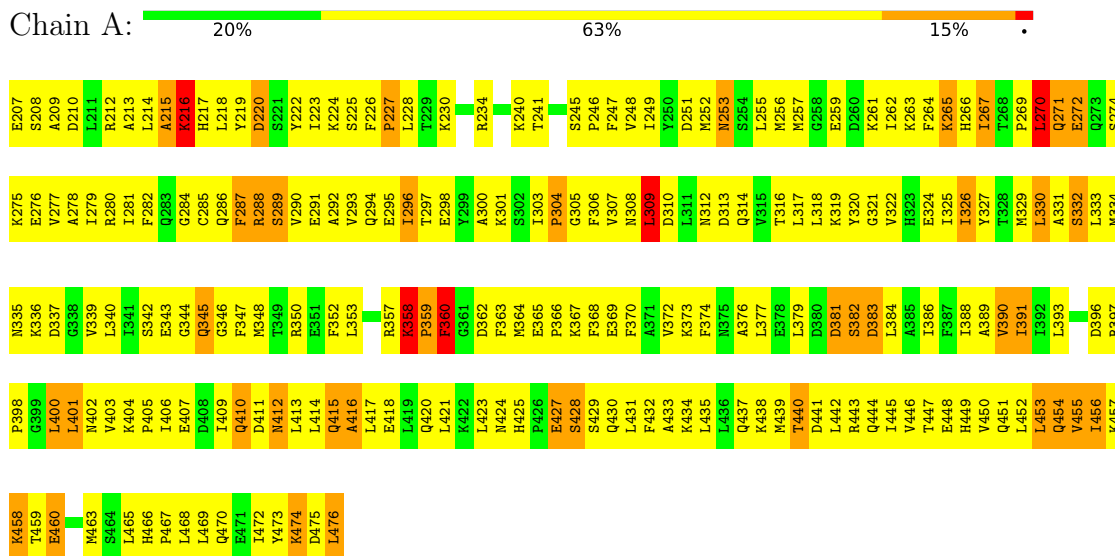
*Continued from previous page...*

<b>Mol</b>	<b>Chain</b>	<b>Residues</b>	<b>Atoms</b>					<b>ZeroOcc</b>	<b>AltConf</b>
2	B	1	Total	C	N	O	S	0	0
			44	37	2	4	1		
2	C	1	Total	C	N	O	S	0	0
			44	37	2	4	1		
2	D	1	Total	C	N	O	S	0	0
			44	37	2	4	1		

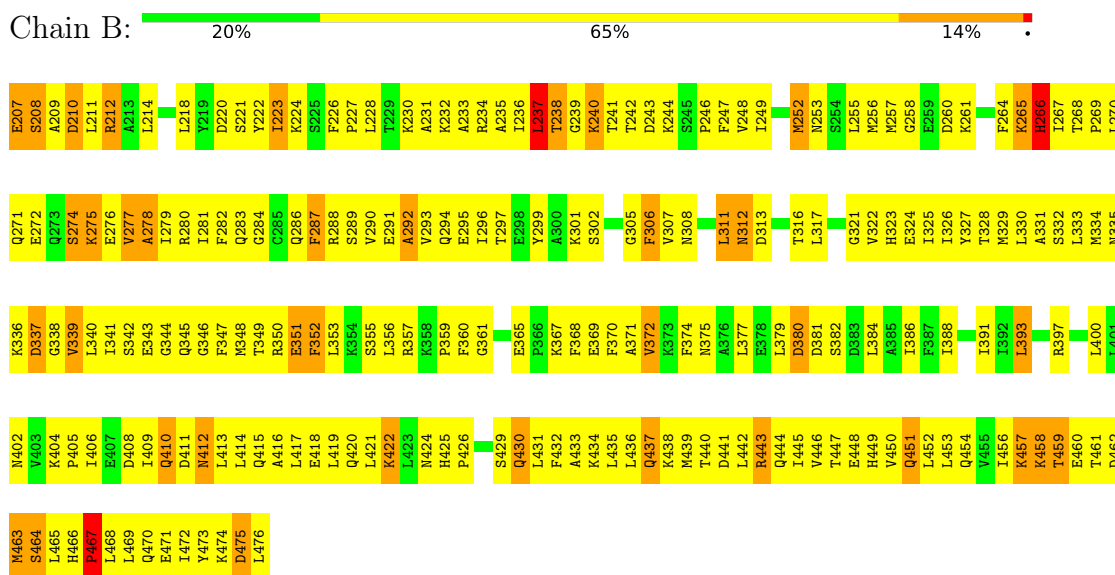
### 3 Residue-property plots

These plots are drawn for all protein, RNA, DNA and oligosaccharide chains in the entry. The first graphic for a chain summarises the proportions of the various outlier classes displayed in the second graphic. The second graphic shows the sequence view annotated by issues in geometry. Residues are color-coded according to the number of geometric quality criteria for which they contain at least one outlier: green = 0, yellow = 1, orange = 2 and red = 3 or more. Stretches of 2 or more consecutive residues without any outlier are shown as a green connector. Residues present in the sample, but not in the model, are shown in grey.

- Molecule 1: PROTEIN (PEROXISOME PROLIFERATOR ACTIVATED RECEPTOR GAMMA)

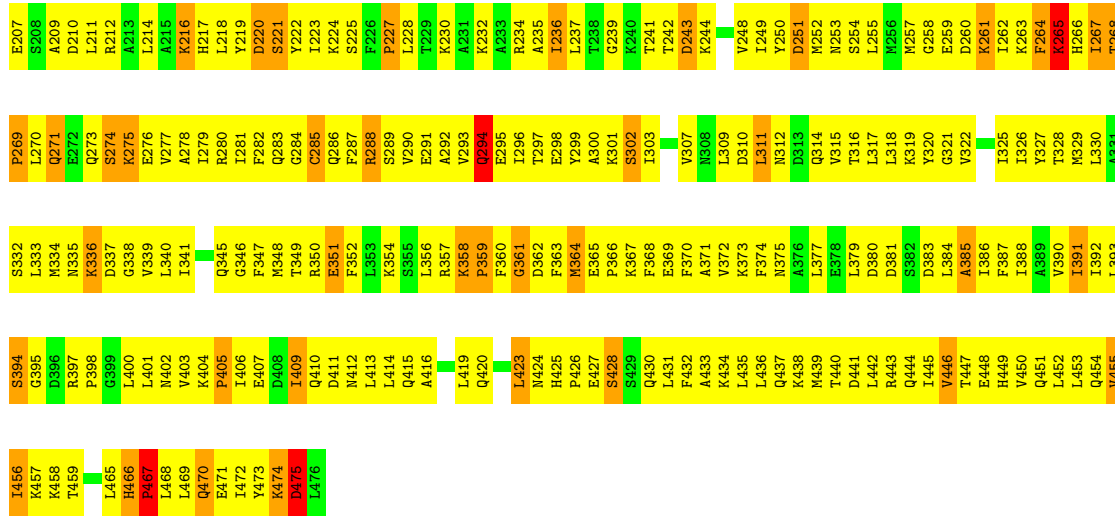


- Molecule 1: PROTEIN (PEROXISOME PROLIFERATOR ACTIVATED RECEPTOR GAMMA)



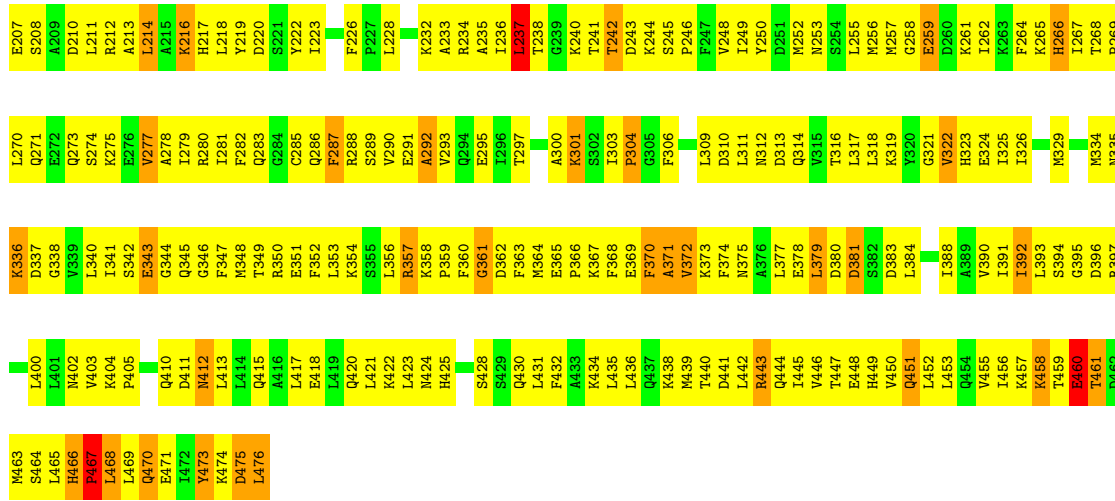
- Molecule 1: PROTEIN (PEROXISOME PROLIFERATOR ACTIVATED RECEPTOR GAMMA)

Chain C: 17% 68% 14%



● Molecule 1: PROTEIN (PEROXISOME PROLIFERATOR ACTIVATED RECEPTOR GAMMA)

Chain D: 22% 65% 12%



## 4 Data and refinement statistics i

Property	Value	Source
Space group	P 1 2 1	Depositor
Cell constants a, b, c, $\alpha$ , $\beta$ , $\gamma$	92.72Å 61.54Å 118.81Å 90.00° 102.57° 90.00°	Depositor
Resolution (Å)	10.00 – 2.90 19.88 – 2.59	Depositor EDS
% Data completeness (in resolution range)	78.6 (10.00-2.90) 71.1 (19.88-2.59)	Depositor EDS
$R_{merge}$	0.06	Depositor
$R_{sym}$	0.07	Depositor
$\langle I/\sigma(I) \rangle$ <sup>1</sup>	2.11 (at 2.59Å)	Xtrriage
Refinement program	CNS 0.5	Depositor
R, $R_{free}$	0.240 , 0.283 0.275 , (Not available)	Depositor DCC
$R_{free}$ test set	No test flags present.	wwPDB-VP
Wilson B-factor (Å <sup>2</sup> )	35.1	Xtrriage
Anisotropy	0.527	Xtrriage
Bulk solvent $k_{sol}$ (e/Å <sup>3</sup> ), $B_{sol}$ (Å <sup>2</sup> )	0.36 , 92.9	EDS
L-test for twinning <sup>2</sup>	$\langle  L  \rangle = 0.48$ , $\langle L^2 \rangle = 0.31$	Xtrriage
Estimated twinning fraction	No twinning to report.	Xtrriage
$F_o, F_c$ correlation	0.89	EDS
Total number of atoms	8840	wwPDB-VP
Average B, all atoms (Å <sup>2</sup> )	21.0	wwPDB-VP

Xtrriage's analysis on translational NCS is as follows: *The analyses of the Patterson function reveals a significant off-origin peak that is 83.80 % of the origin peak, indicating pseudo-translational symmetry. The chance of finding a peak of this or larger height randomly in a structure without pseudo-translational symmetry is equal to 1.9712e-07. The detected translational NCS is most likely also responsible for the elevated intensity ratio.*

<sup>1</sup>Intensities estimated from amplitudes.

<sup>2</sup>Theoretical values of  $\langle |L| \rangle$ ,  $\langle L^2 \rangle$  for acentric reflections are 0.5, 0.333 respectively for untwinned datasets, and 0.375, 0.2 for perfectly twinned datasets.

## 5 Model quality [i](#)

### 5.1 Standard geometry [i](#)

Bond lengths and bond angles in the following residue types are not validated in this section: 072

The Z score for a bond length (or angle) is the number of standard deviations the observed value is removed from the expected value. A bond length (or angle) with  $|Z| > 5$  is considered an outlier worth inspection. RMSZ is the root-mean-square of all Z scores of the bond lengths (or angles).

Mol	Chain	Bond lengths		Bond angles	
		RMSZ	# Z  >5	RMSZ	# Z  >5
1	A	0.46	0/2203	0.71	1/2967 (0.0%)
1	B	0.45	0/2203	0.72	0/2967
1	C	0.46	0/2203	0.72	0/2967
1	D	0.49	0/2203	0.73	0/2967
All	All	0.46	0/8812	0.72	1/11868 (0.0%)

Chiral center outliers are detected by calculating the chiral volume of a chiral center and verifying if the center is modelled as a planar moiety or with the opposite hand. A planarity outlier is detected by checking planarity of atoms in a peptide group, atoms in a mainchain group or atoms of a sidechain that are expected to be planar.

Mol	Chain	#Chirality outliers	#Planarity outliers
1	D	0	1

There are no bond length outliers.

All (1) bond angle outliers are listed below:

Mol	Chain	Res	Type	Atoms	Z	Observed( $^{\circ}$ )	Ideal( $^{\circ}$ )
1	A	270	LEU	CA-CB-CG	5.65	128.31	115.30

There are no chirality outliers.

All (1) planarity outliers are listed below:

Mol	Chain	Res	Type	Group
1	D	473	TYR	Sidechain



## 5.2 Too-close contacts [i](#)

In the following table, the Non-H and H(model) columns list the number of non-hydrogen atoms and hydrogen atoms in the chain respectively. The H(added) column lists the number of hydrogen atoms added and optimized by MolProbity. The Clashes column lists the number of clashes within the asymmetric unit, whereas Symm-Clashes lists symmetry-related clashes.

Mol	Chain	Non-H	H(model)	H(added)	Clashes	Symm-Clashes
1	A	2166	0	2232	312	0
1	B	2166	0	2232	305	0
1	C	2166	0	2232	325	0
1	D	2166	0	2232	301	1
2	A	44	0	45	6	0
2	B	44	0	45	4	0
2	C	44	0	45	4	0
2	D	44	0	45	1	0
All	All	8840	0	9108	1220	1

The all-atom clashscore is defined as the number of clashes found per 1000 atoms (including hydrogen atoms). The all-atom clashscore for this structure is 68.

The worst 5 of 1220 close contacts within the same asymmetric unit are listed below, sorted by their clash magnitude.

Atom-1	Atom-2	Interatomic distance (Å)	Clash overlap (Å)
1:A:400:LEU:HD12	1:A:403:VAL:HG22	1.27	1.10
1:D:290:VAL:HG21	1:D:473:TYR:HD1	1.17	1.08
1:D:452:LEU:O	1:D:456:ILE:HG12	1.54	1.07
1:C:320:TYR:HB2	1:C:397:ARG:HH11	1.22	1.02
1:D:259:GLU:HA	1:D:262:ILE:HG22	1.35	1.02

All (1) symmetry-related close contacts are listed below. The label for Atom-2 includes the symmetry operator and encoded unit-cell translations to be applied.

Atom-1	Atom-2	Interatomic distance (Å)	Clash overlap (Å)
1:D:245:SER:OG	1:D:245:SER:OG[2_756]	1.79	0.41

## 5.3 Torsion angles [i](#)

### 5.3.1 Protein backbone [i](#)

In the following table, the Percentiles column shows the percent Ramachandran outliers of the chain as a percentile score with respect to all X-ray entries followed by that with respect to entries of similar resolution.

The Analysed column shows the number of residues for which the backbone conformation was analysed, and the total number of residues.

Mol	Chain	Analysed	Favoured	Allowed	Outliers	Percentiles	
1	A	268/270 (99%)	195 (73%)	46 (17%)	27 (10%)	0	1
1	B	268/270 (99%)	182 (68%)	56 (21%)	30 (11%)	0	1
1	C	268/270 (99%)	164 (61%)	68 (25%)	36 (13%)	0	0
1	D	268/270 (99%)	175 (65%)	70 (26%)	23 (9%)	1	2
All	All	1072/1080 (99%)	716 (67%)	240 (22%)	116 (11%)	0	1

5 of 116 Ramachandran outliers are listed below:

Mol	Chain	Res	Type
1	A	215	ALA
1	A	240	LYS
1	A	267	ILE
1	A	269	PRO
1	A	272	GLU

### 5.3.2 Protein sidechains [i](#)

In the following table, the Percentiles column shows the percent sidechain outliers of the chain as a percentile score with respect to all X-ray entries followed by that with respect to entries of similar resolution.

The Analysed column shows the number of residues for which the sidechain conformation was analysed, and the total number of residues.

Mol	Chain	Analysed	Rotameric	Outliers	Percentiles	
1	A	243/243 (100%)	212 (87%)	31 (13%)	4	13
1	B	243/243 (100%)	217 (89%)	26 (11%)	6	20
1	C	243/243 (100%)	221 (91%)	22 (9%)	9	28
1	D	243/243 (100%)	220 (90%)	23 (10%)	8	26
All	All	972/972 (100%)	870 (90%)	102 (10%)	7	21

5 of 102 residues with a non-rotameric sidechain are listed below:

Mol	Chain	Res	Type
1	C	216	LYS
1	C	409	ILE
1	D	470	GLN
1	C	220	ASP
1	C	294	GLN

Sometimes sidechains can be flipped to improve hydrogen bonding and reduce clashes. 5 of 51 such sidechains are listed below:

Mol	Chain	Res	Type
1	B	466	HIS
1	C	425	HIS
1	D	451	GLN
1	B	470	GLN
1	C	294	GLN

### 5.3.3 RNA [i](#)

There are no RNA molecules in this entry.

## 5.4 Non-standard residues in protein, DNA, RNA chains [i](#)

There are no non-standard protein/DNA/RNA residues in this entry.

## 5.5 Carbohydrates [i](#)

There are no monosaccharides in this entry.

## 5.6 Ligand geometry [i](#)

4 ligands are modelled in this entry.

In the following table, the Counts columns list the number of bonds (or angles) for which Mogul statistics could be retrieved, the number of bonds (or angles) that are observed in the model and the number of bonds (or angles) that are defined in the Chemical Component Dictionary. The Link column lists molecule types, if any, to which the group is linked. The Z score for a bond length (or angle) is the number of standard deviations the observed value is removed from the expected value. A bond length (or angle) with  $|Z| > 2$  is considered an outlier worth inspection. RMSZ is the root-mean-square of all Z scores of the bond lengths (or angles).

Mol	Type	Chain	Res	Link	Bond lengths			Bond angles		
					Counts	RMSZ	# Z  > 2	Counts	RMSZ	# Z  > 2
2	072	C	3	-	45,47,47	3.72	30 (66%)	53,61,61	2.83	14 (26%)
2	072	A	1	-	45,47,47	3.94	31 (68%)	53,61,61	3.36	15 (28%)
2	072	D	4	-	45,47,47	3.89	32 (71%)	53,61,61	2.59	17 (32%)
2	072	B	2	-	45,47,47	3.80	32 (71%)	53,61,61	2.57	14 (26%)

In the following table, the Chirals column lists the number of chiral outliers, the number of chiral centers analysed, the number of these observed in the model and the number defined in the Chemical Component Dictionary. Similar counts are reported in the Torsion and Rings columns. '-' means no outliers of that kind were identified.

Mol	Type	Chain	Res	Link	Chirals	Torsions	Rings
2	072	C	3	-	-	14/34/50/50	0/4/4/4
2	072	A	1	-	-	14/34/50/50	0/4/4/4
2	072	D	4	-	-	11/34/50/50	0/4/4/4
2	072	B	2	-	-	11/34/50/50	0/4/4/4

The worst 5 of 125 bond length outliers are listed below:

Mol	Chain	Res	Type	Atoms	Z	Observed(Å)	Ideal(Å)
2	C	3	072	C4B-N4A	10.20	1.62	1.46
2	A	1	072	C4B-N4A	9.54	1.61	1.46
2	B	2	072	C3B-N3A	8.56	1.61	1.46
2	D	4	072	C3B-N3A	8.32	1.60	1.46
2	B	2	072	C1C-C1D	8.11	1.66	1.51

The worst 5 of 60 bond angle outliers are listed below:

Mol	Chain	Res	Type	Atoms	Z	Observed(°)	Ideal(°)
2	C	3	072	C4C-C4B-N4A	12.53	133.27	113.13
2	A	1	072	C4C-C4B-N4A	11.59	131.75	113.13
2	A	1	072	C2A-S1B-C1B	10.02	101.34	94.12
2	A	1	072	C1C-C1B-C1A	9.60	126.18	111.08
2	D	4	072	C3C-C3B-N3A	8.77	126.86	113.31

There are no chirality outliers.

5 of 50 torsion outliers are listed below:

Mol	Chain	Res	Type	Atoms
2	A	1	072	S1B-C2A-C2B-C2C
2	A	1	072	N3A-C2A-C2B-C2C

*Continued on next page...*

*Continued from previous page...*

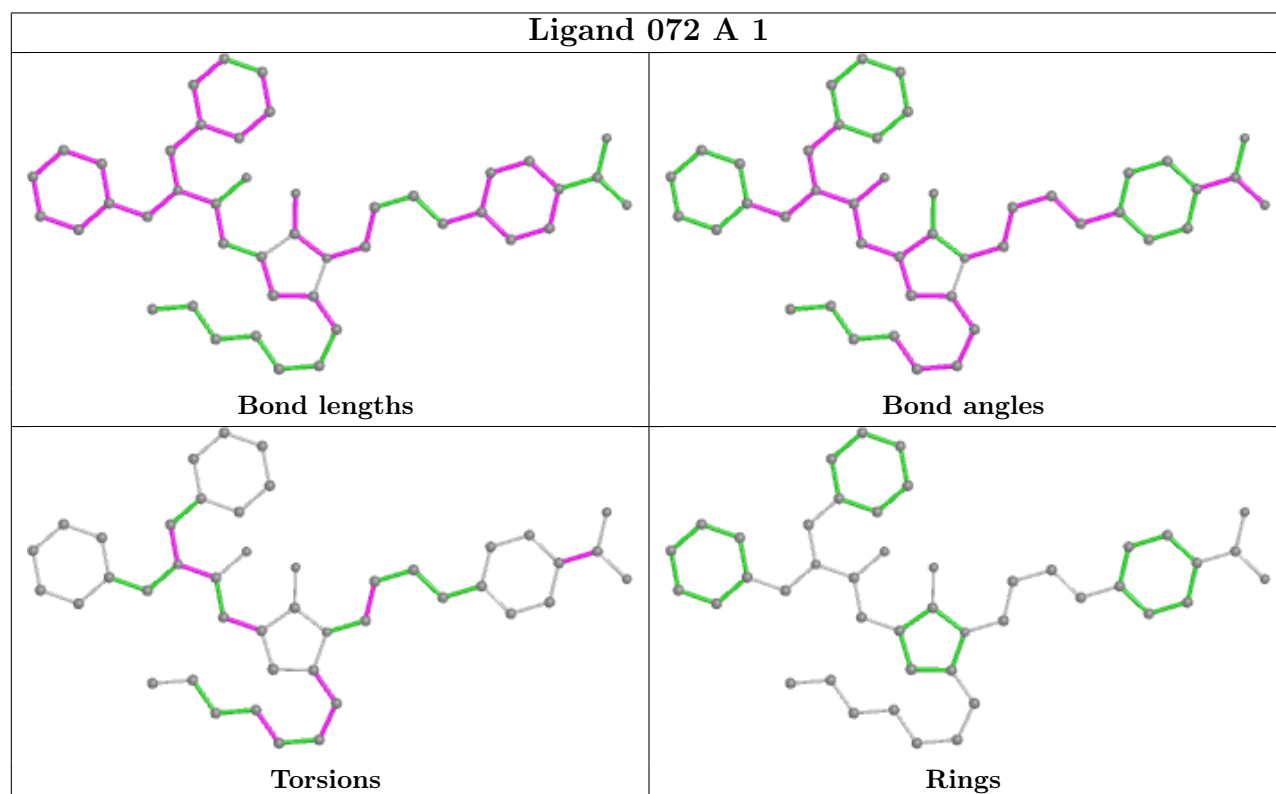
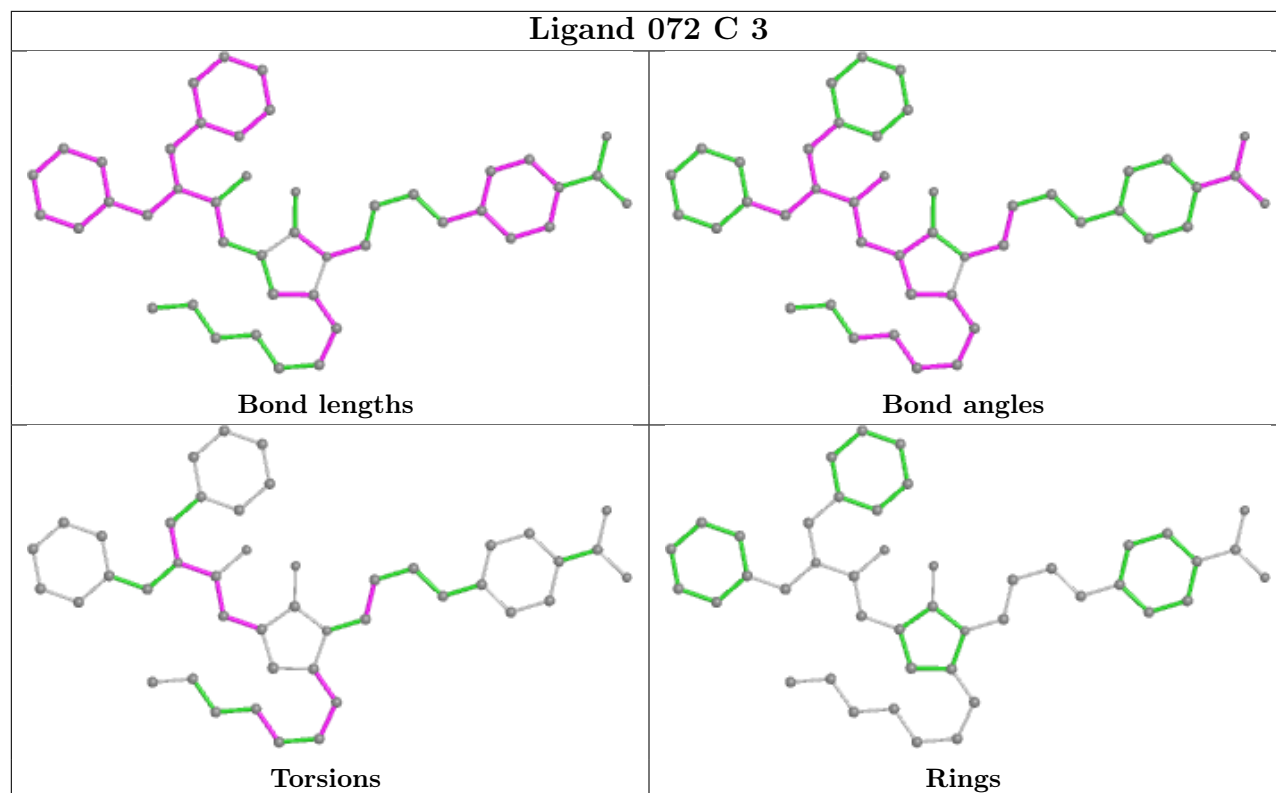
Mol	Chain	Res	Type	Atoms
2	A	1	072	C4C-C4B-N4A-C1D
2	C	3	072	S1B-C1B-C1C-C1D
2	C	3	072	C1A-C1B-C1C-C1D

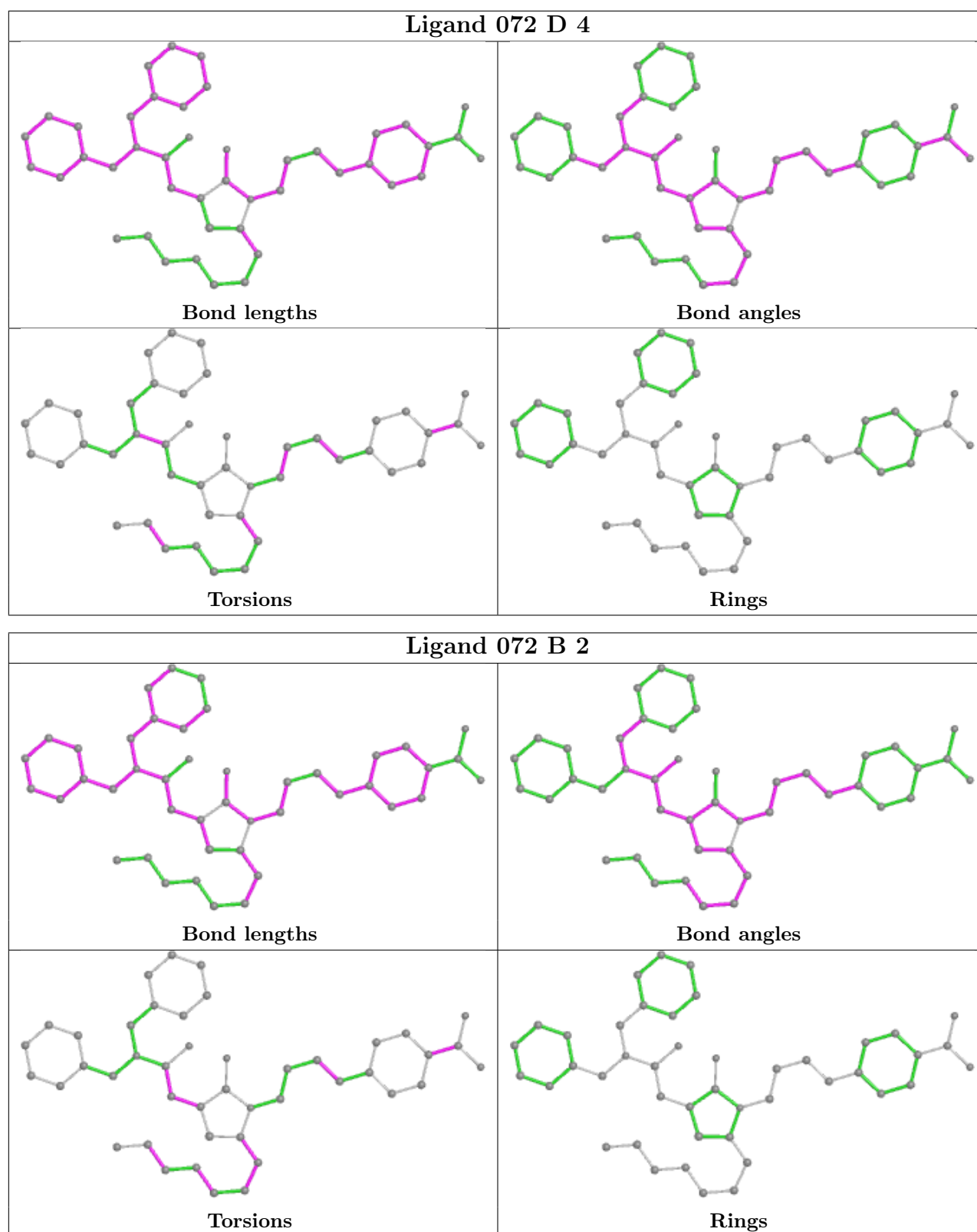
There are no ring outliers.

4 monomers are involved in 15 short contacts:

Mol	Chain	Res	Type	Clashes	Symm-Clashes
2	C	3	072	4	0
2	A	1	072	6	0
2	D	4	072	1	0
2	B	2	072	4	0

The following is a two-dimensional graphical depiction of Mogul quality analysis of bond lengths, bond angles, torsion angles, and ring geometry for all instances of the Ligand of Interest. In addition, ligands with molecular weight > 250 and outliers as shown on the validation Tables will also be included. For torsion angles, if less than 5% of the Mogul distribution of torsion angles is within 10 degrees of the torsion angle in question, then that torsion angle is considered an outlier. Any bond that is central to one or more torsion angles identified as an outlier by Mogul will be highlighted in the graph. For rings, the root-mean-square deviation (RMSD) between the ring in question and similar rings identified by Mogul is calculated over all ring torsion angles. If the average RMSD is greater than 60 degrees and the minimal RMSD between the ring in question and any Mogul-identified rings is also greater than 60 degrees, then that ring is considered an outlier. The outliers are highlighted in purple. The color gray indicates Mogul did not find sufficient equivalents in the CSD to analyse the geometry.





## 5.7 Other polymers [\(i\)](#)

There are no such residues in this entry.

## 5.8 Polymer linkage issues

There are no chain breaks in this entry.



## 6 Fit of model and data [i](#)

### 6.1 Protein, DNA and RNA chains [i](#)

Unable to reproduce the depositors R factor - this section is therefore empty.

### 6.2 Non-standard residues in protein, DNA, RNA chains [i](#)

Unable to reproduce the depositors R factor - this section is therefore empty.

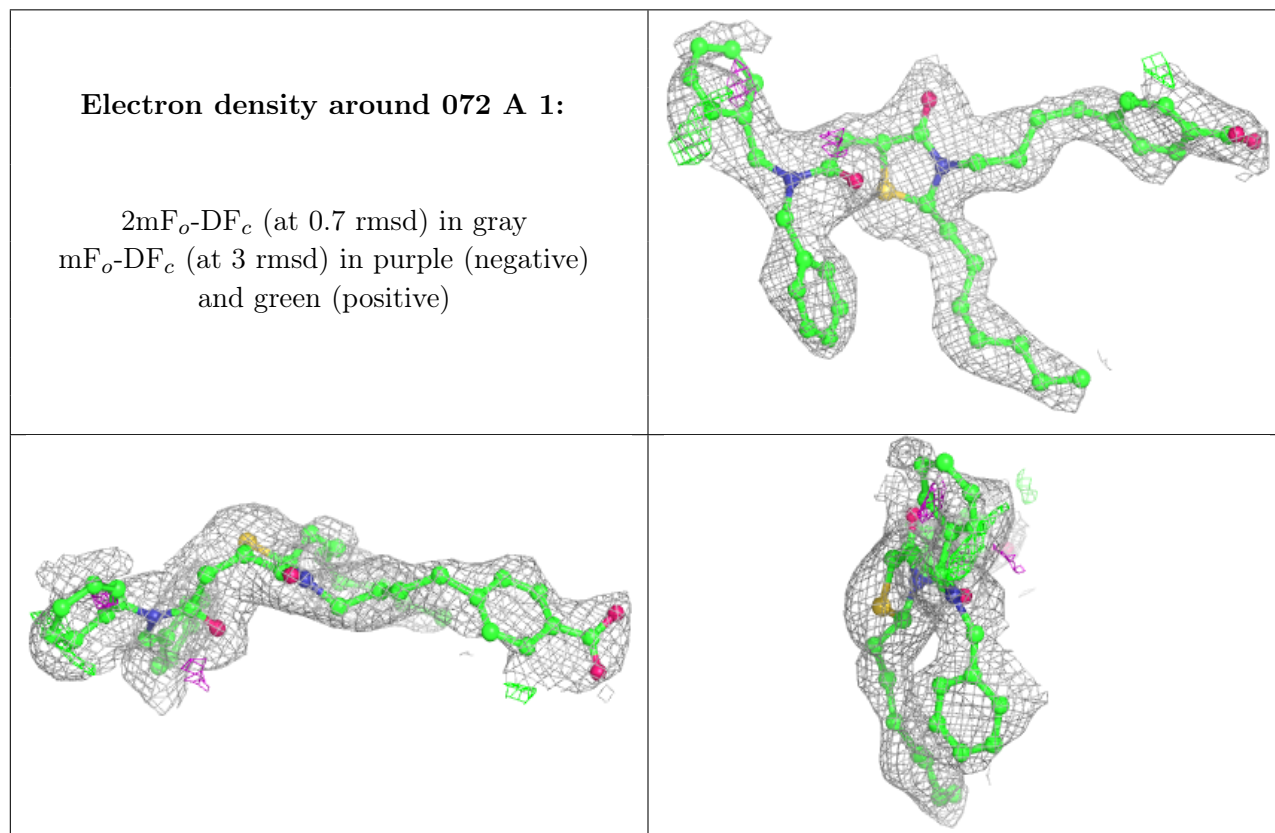
### 6.3 Carbohydrates [i](#)

Unable to reproduce the depositors R factor - this section is therefore empty.

### 6.4 Ligands [i](#)

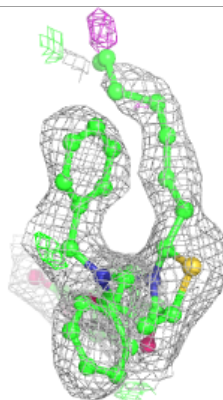
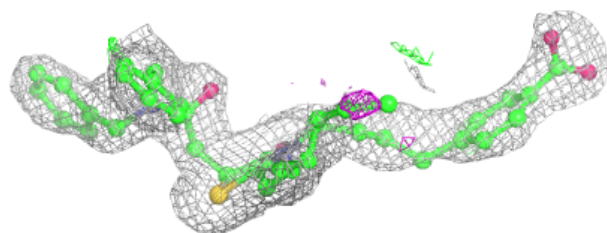
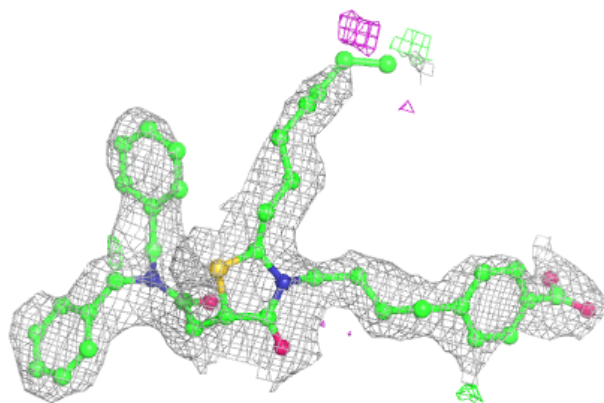
Unable to reproduce the depositors R factor - this section is therefore empty.

The following is a graphical depiction of the model fit to experimental electron density of all instances of the Ligand of Interest. In addition, ligands with molecular weight > 250 and outliers as shown on the geometry validation Tables will also be included. Each fit is shown from different orientation to approximate a three-dimensional view.

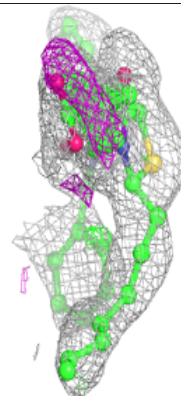
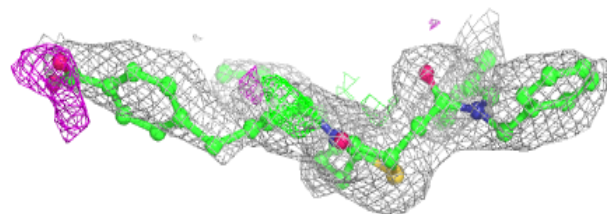
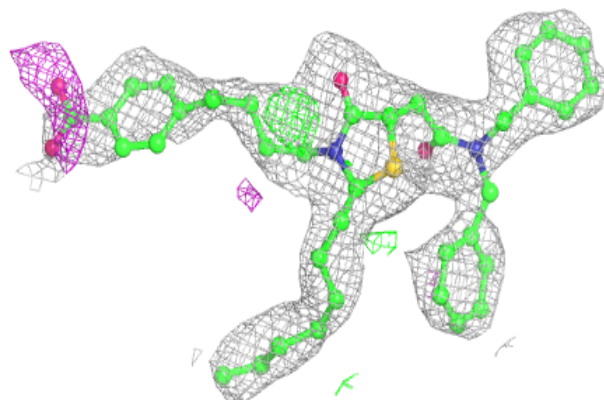


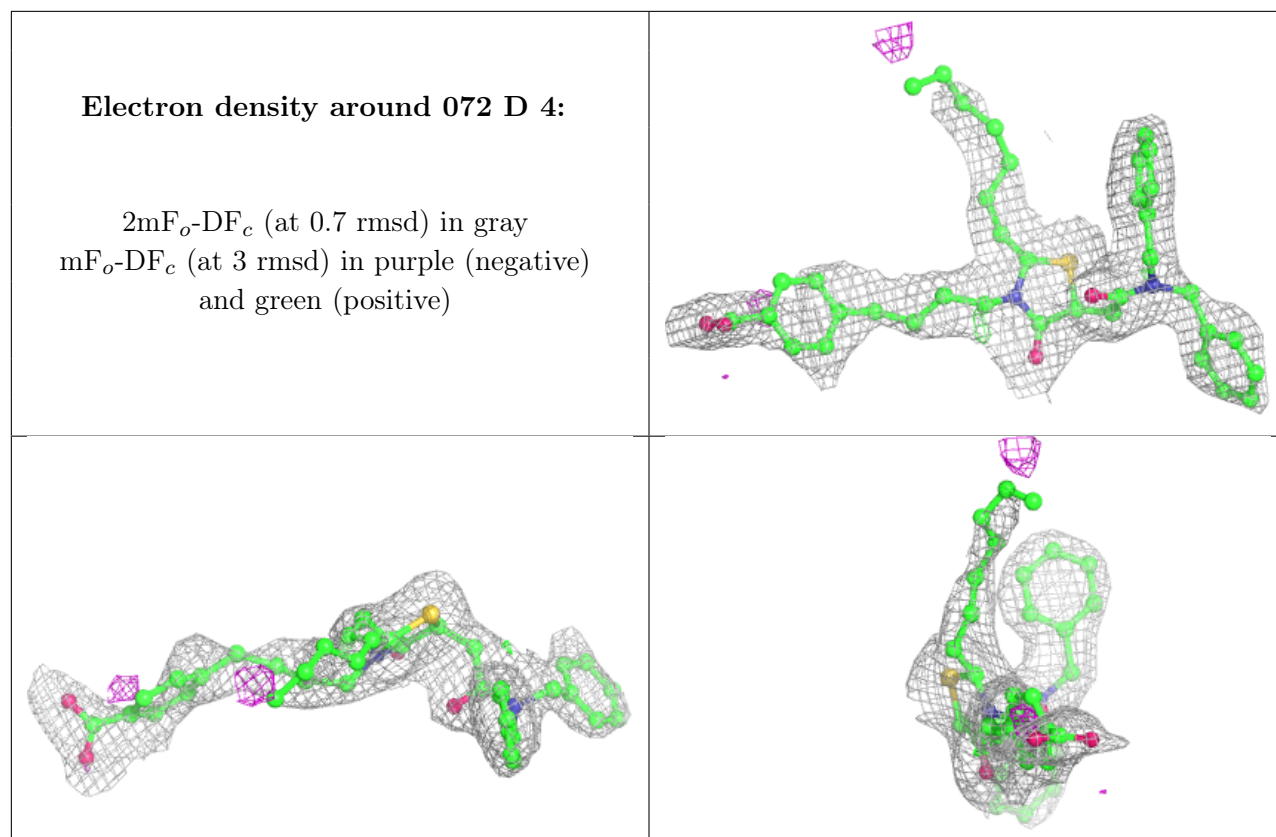
**Electron density around 072 B 2:**

$2mF_o-DF_c$  (at 0.7 rmsd) in gray  
 $mF_o-DF_c$  (at 3 rmsd) in purple (negative)  
and green (positive)

**Electron density around 072 C 3:**

$2mF_o-DF_c$  (at 0.7 rmsd) in gray  
 $mF_o-DF_c$  (at 3 rmsd) in purple (negative)  
and green (positive)





## 6.5 Other polymers [i](#)

Unable to reproduce the depositors R factor - this section is therefore empty.