



Full wwPDB EM Validation Report ⓘ

Apr 2, 2024 – 11:24 pm BST

PDB ID : 8PR0
EMDB ID : EMD-17830
Title : Cytoplasmic dynein-A heavy chain bound to dynactin-p150glued and IC-LC tower
Authors : Singh, K.; Lau, C.K.; Manigrasso, G.; Gassmann, R.; Carter, A.P.
Deposited on : 2023-07-12
Resolution : 9.40 Å(reported)
Based on initial model : 7Z8G

This is a Full wwPDB EM Validation Report for a publicly released PDB entry.

We welcome your comments at validation@mail.wwpdb.org

A user guide is available at

<https://www.wwpdb.org/validation/2017/EMValidationReportHelp>

with specific help available everywhere you see the ⓘ symbol.

The types of validation reports are described at

<http://www.wwpdb.org/validation/2017/FAQs#types>.

The following versions of software and data (see [references ⓘ](#)) were used in the production of this report:

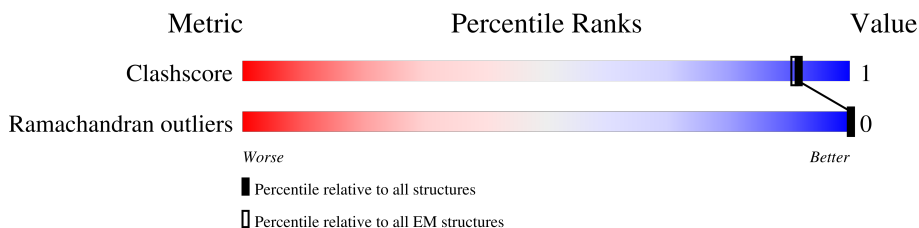
EMDB validation analysis : 0.0.1.dev92
MolProbity : 4.02b-467
Percentile statistics : 20191225.v01 (using entries in the PDB archive December 25th 2019)
MapQ : 1.9.13
Ideal geometry (proteins) : Engh & Huber (2001)
Ideal geometry (DNA, RNA) : Parkinson et al. (1996)
Validation Pipeline (wwPDB-VP) : 2.36

1 Overall quality at a glance i

The following experimental techniques were used to determine the structure:
ELECTRON MICROSCOPY

The reported resolution of this entry is 9.40 Å.

Percentile scores (ranging between 0-100) for global validation metrics of the entry are shown in the following graphic. The table shows the number of entries on which the scores are based.





Metric	Whole archive (#Entries)	EM structures (#Entries)
Clashscore	158937	4297
Ramachandran outliers	154571	4023

The table below summarises the geometric issues observed across the polymeric chains and their fit to the map. The red, orange, yellow and green segments of the bar indicate the fraction of residues that contain outliers for ≥ 3 , 2, 1 and 0 types of geometric quality criteria respectively. A grey segment represents the fraction of residues that are not modelled. The numeric value for each fraction is indicated below the corresponding segment, with a dot representing fractions $\leq 5\%$. The upper red bar (where present) indicates the fraction of residues that have poor fit to the EM map (all-atom inclusion $< 40\%$). The numeric value is given above the bar.

Mol	Chain	Length	Quality of chain
1	C	612	5% 95%
1	D	612	5% 95%
2	E	89	93% 7%
2	F	89	91% 9%
3	G	113	5% 100%
3	H	113	6% 100%
4	I	1281	33% 66%
4	J	1281	33% 66%
5	A	4646	13% 86%

Continued on next page...

Continued from previous page...

Mol	Chain	Length	Quality of chain
5	B	4646	 8% 91%
6	K	492	 55% 43%

2 Entry composition [i](#)

There are 6 unique types of molecules in this entry. The entry contains 13123 atoms, of which 0 are hydrogens and 0 are deuteriums.

In the tables below, the AltConf column contains the number of residues with at least one atom in alternate conformation and the Trace column contains the number of residues modelled with at most 2 atoms.

- Molecule 1 is a protein called Cytoplasmic dynein 1 intermediate chain 2.

Mol	Chain	Residues	Atoms				AltConf	Trace
			Total	C	N	O		
1	D	31	154	92	31	31	0	0
1	C	31	154	92	31	31	0	0

There are 4 discrepancies between the modelled and reference sequences:

Chain	Residue	Modelled	Actual	Comment	Reference
D	484	SER	THR	conflict	UNP Q13409
D	499	GLY	ASP	conflict	UNP Q13409
C	484	SER	THR	conflict	UNP Q13409
C	499	GLY	ASP	conflict	UNP Q13409

- Molecule 2 is a protein called Dynein light chain 1, cytoplasmic.

Mol	Chain	Residues	Atoms				AltConf	Trace
			Total	C	N	O		
2	F	89	441	263	89	89	0	0
2	E	89	441	263	89	89	0	0

- Molecule 3 is a protein called Dynein light chain Tctex-type 1.

Mol	Chain	Residues	Atoms				AltConf	Trace
			Total	C	N	O		
3	G	113	558	332	113	113	0	0
3	H	113	558	332	113	113	0	0

- Molecule 4 is a protein called Dynactin subunit 1.

Mol	Chain	Residues	Atoms				AltConf	Trace
4	I	431	Total	C	N	O	0	0
			2136	1274	431	431		
4	J	431	Total	C	N	O	0	0
			2136	1274	431	431		

- Molecule 5 is a protein called Cytoplasmic dynein 1 heavy chain 1.

Mol	Chain	Residues	Atoms				AltConf	Trace
5	B	398	Total	C	N	O	0	0
			1973	1177	398	398		
5	A	643	Total	C	N	O	0	0
			3189	1903	643	643		

There are 4 discrepancies between the modelled and reference sequences:

Chain	Residue	Modelled	Actual	Comment	Reference
B	1567	GLU	ARG	engineered mutation	UNP Q14204
B	1610	GLU	LYS	engineered mutation	UNP Q14204
A	1567	GLU	ARG	engineered mutation	UNP Q14204
A	1610	GLU	LYS	engineered mutation	UNP Q14204

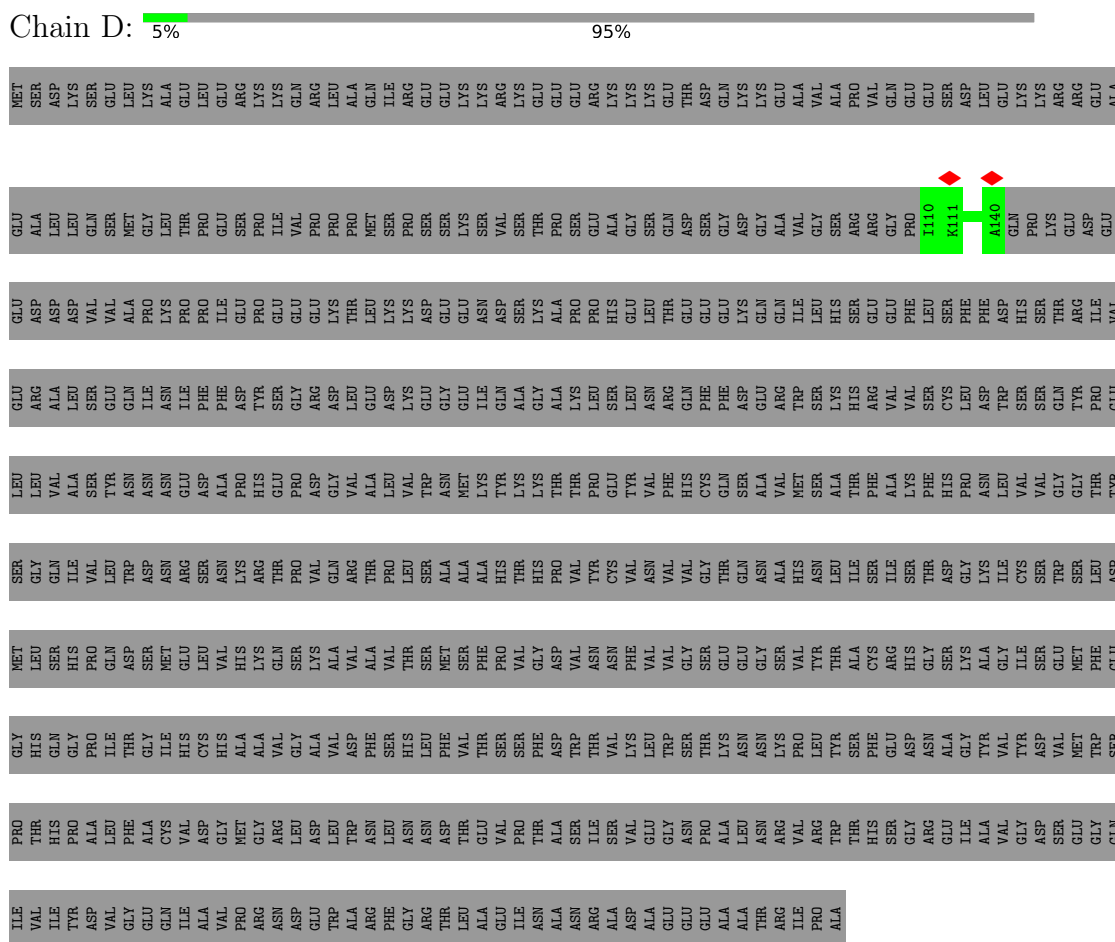
- Molecule 6 is a protein called Cytoplasmic dynein 1 light intermediate chain 2.

Mol	Chain	Residues	Atoms				AltConf	Trace
6	K	280	Total	C	N	O	0	0
			1383	823	280	280		

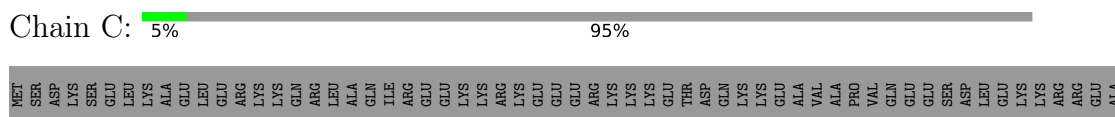
3 Residue-property plots

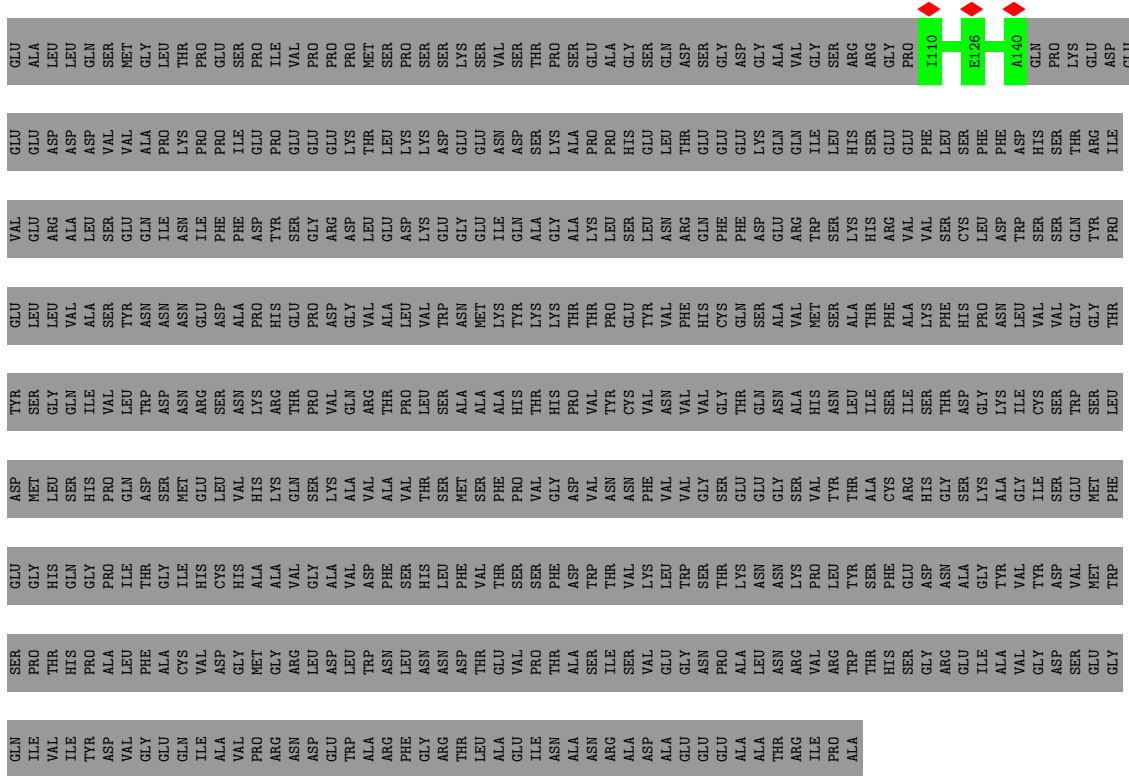
These plots are drawn for all protein, RNA, DNA and oligosaccharide chains in the entry. The first graphic for a chain summarises the proportions of the various outlier classes displayed in the second graphic. The second graphic shows the sequence view annotated by issues in geometry and atom inclusion in map density. Residues are color-coded according to the number of geometric quality criteria for which they contain at least one outlier: green = 0, yellow = 1, orange = 2 and red = 3 or more. A red diamond above a residue indicates a poor fit to the EM map for this residue (all-atom inclusion < 40%). Stretches of 2 or more consecutive residues without any outlier are shown as a green connector. Residues present in the sample, but not in the model, are shown in grey.

- Molecule 1: Cytoplasmic dynein 1 intermediate chain 2

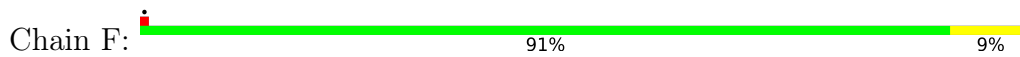


- Molecule 1: Cytoplasmic dynein 1 intermediate chain 2

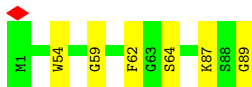




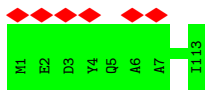
• Molecule 2: Dynein light chain 1, cytoplasmic



• Molecule 2: Dynein light chain 1, cytoplasmic



• Molecule 3: Dynein light chain Tctex-type 1



• Molecule 3: Dynein light chain Tctex-type 1



SER
PHE
TYR
GLU
ARG
GLY
VAL
ALA
LEU
CYS
THR
GLU

• Molecule 6: Cytoplasmic dynein 1 light intermediate chain 2



MET
ALA
PRO
VAL
GLY
VAL
GLU
LYS
LEU
LEU
LEU
GLY
PRO
ASN
GLY
PRO
ALA
VAL
ALA
ALA
ALA
GLY
GLY
ASP
LEU
THR
SER
GLU
E29
Y90
A137
K164
Q196
ARG
GLY
PRO
LEU
THR
SER
GLY
SER
ASP
GLU
GLU
ASN
VAL
ALA
LEU
PRO
LEU
LEU
GLY
ASP
ASN
V218

C231
R247
L251
Q255
A307
A321
I322
T329
VAL
LYS
PRO
GLU
ASP
ALA
TYR
GLY
ASP
PHE
ILE
VAL
LYS
PRO
VAL
ARG
SER
SER
ARG
LYS
LEU
VAL
HIS
ASP
LYS
GLU
LEU
ALA
GLU
ALA
GLU
ASP
GLU
GLN
PHE
LEU
MET
LYS
GLN
SER
LEU
LEU
ALA
LYS
GLN
PRO
ALA

THR
PRO
THR
ARG
ALA
SER
GLU
SER
PRO
PRO
ALA
SER
GLY
PRO
SER
GLY
SER
GLN
ARG
THR
GLN
GLY
ARG
GLY
GLY
PRO
ALA
SER
VAL
PRO
SER
SER
SER
PRO
GLY
THR
SER
VAL
LEU
ASN
VAL
GLN
GLU
LEU
LEU
ASP
ARG
MET
THR
ARG
LYS
PRO
ILE
SER
ASN
ASN
MET
VAL
THR
ASN
SER
SER
GLY
VAL
THR
LEU
ALA
PHE
PHE
ASN
SER

LEU
LEU
SER
LYS
LYS
THR
GLY
SER
PRO
PRO
GLY
SER
ALA
GLY
GLY
VAL
GLN
SER
THR
ALA
LYS
LYS
SER
GLY
GLN
LYS
THR
VAL
LEU
SER
ASN
VAL
GLN
GLU
LEU
LEU
ASP
ARG
MET
THR
ARG
LYS
PRO
ASP
SER
SER
MET
VAL
THR
ASN
SER
SER
THR
GLU
ASN
GLU
ALA

4 Experimental information

Property	Value	Source
EM reconstruction method	SINGLE PARTICLE	Depositor
Imposed symmetry	POINT, Not provided	
Number of particles used	42909	Depositor
Resolution determination method	FSC 0.143 CUT-OFF	Depositor
CTF correction method	PHASE FLIPPING AND AMPLITUDE CORRECTION	Depositor
Microscope	FEI TITAN KRIOS	Depositor
Voltage (kV)	300	Depositor
Electron dose ($e^-/\text{\AA}^2$)	53	Depositor
Minimum defocus (nm)	500	Depositor
Maximum defocus (nm)	4000	Depositor
Magnification	Not provided	
Image detector	GATAN K3 BIOQUANTUM (6k x 4k)	Depositor
Maximum map value	0.081	Depositor
Minimum map value	-0.053	Depositor
Average map value	0.000	Depositor
Map value standard deviation	0.003	Depositor
Recommended contour level	0.018	Depositor
Map size (Å)	423.6, 423.6, 423.6	wwPDB
Map dimensions	200, 200, 200	wwPDB
Map angles (°)	90.0, 90.0, 90.0	wwPDB
Pixel spacing (Å)	2.118, 2.118, 2.118	Depositor

5 Model quality [i](#)

5.1 Standard geometry [i](#)

The Z score for a bond length (or angle) is the number of standard deviations the observed value is removed from the expected value. A bond length (or angle) with $|Z| > 5$ is considered an outlier worth inspection. RMSZ is the root-mean-square of all Z scores of the bond lengths (or angles).

Mol	Chain	Bond lengths		Bond angles	
		RMSZ	# Z >5	RMSZ	# Z >5
1	C	0.29	0/153	0.53	0/212
1	D	0.32	0/153	0.54	0/212
2	E	0.31	0/440	0.67	0/612
2	F	0.32	0/440	0.66	0/612
3	G	0.29	0/557	0.58	0/774
3	H	0.30	0/557	0.58	0/774
4	I	0.34	0/2135	0.60	2/2976 (0.1%)
4	J	0.35	0/2135	0.58	1/2976 (0.0%)
5	A	0.33	0/3188	0.61	0/4446
5	B	0.31	0/1971	0.58	1/2746 (0.0%)
6	K	0.31	0/1381	0.68	0/1920
All	All	0.32	0/13110	0.61	4/18260 (0.0%)

Chiral center outliers are detected by calculating the chiral volume of a chiral center and verifying if the center is modelled as a planar moiety or with the opposite hand. A planarity outlier is detected by checking planarity of atoms in a peptide group, atoms in a mainchain group or atoms of a sidechain that are expected to be planar.

Mol	Chain	#Chirality outliers	#Planarity outliers
2	E	0	1
2	F	0	1
4	I	0	1
5	A	0	1
5	B	0	3
6	K	0	3
All	All	0	10

There are no bond length outliers.

All (4) bond angle outliers are listed below:

Mol	Chain	Res	Type	Atoms	Z	Observed(°)	Ideal(°)
4	J	591	PHE	C-N-CA	7.51	140.48	121.70

Continued on next page...

Continued from previous page...

Mol	Chain	Res	Type	Atoms	Z	Observed(°)	Ideal(°)
4	I	612	MET	N-CA-CB	-5.44	100.81	110.60
4	I	612	MET	CB-CA-C	5.29	120.99	110.40
5	B	1310	GLY	N-CA-C	5.12	125.89	113.10

There are no chirality outliers.

All (10) planarity outliers are listed below:

Mol	Chain	Res	Type	Group
5	A	1307	THR	Peptide
5	B	1309	THR	Peptide
5	B	1349	GLN	Peptide
5	B	1393	TYR	Peptide
2	E	64	SER	Peptide
2	F	13	MET	Peptide
4	I	691	GLU	Peptide
6	K	164	LYS	Peptide
6	K	307	ALA	Peptide
6	K	90	TYR	Peptide

5.2 Too-close contacts [i](#)

In the following table, the Non-H and H(model) columns list the number of non-hydrogen atoms and hydrogen atoms in the chain respectively. The H(added) column lists the number of hydrogen atoms added and optimized by MolProbity. The Clashes column lists the number of clashes within the asymmetric unit, whereas Symm-Clashes lists symmetry-related clashes.

Mol	Chain	Non-H	H(model)	H(added)	Clashes	Symm-Clashes
1	C	154	0	65	0	0
1	D	154	0	65	0	0
2	E	441	0	204	4	0
2	F	441	0	204	5	0
3	G	558	0	261	0	0
3	H	558	0	261	0	0
4	I	2136	0	1017	3	0
4	J	2136	0	1017	7	0
5	A	3189	0	1395	10	0
5	B	1973	0	864	1	0
6	K	1383	0	604	2	0
All	All	13123	0	5957	28	0

The all-atom clashscore is defined as the number of clashes found per 1000 atoms (including

hydrogen atoms). The all-atom clashscore for this structure is 1.

All (28) close contacts within the same asymmetric unit are listed below, sorted by their clash magnitude.

Atom-1	Atom-2	Interatomic distance (Å)	Clash overlap (Å)
4:J:773:GLY:H	4:J:859:GLU:HA	1.70	0.56
5:A:1350:PRO:HA	5:A:1430:THR:HA	1.92	0.52
2:F:59:GLY:HA3	2:E:62:PHE:HA	1.93	0.50
6:K:251:LEU:O	6:K:255:GLN:CB	2.62	0.47
5:A:1099:LYS:HA	5:A:1108:ASP:HA	1.97	0.47
5:A:1457:MET:O	5:A:1461:GLU:CB	2.62	0.47
4:I:896:LEU:O	4:I:900:MET:CB	2.63	0.47
4:I:987:ALA:HA	4:J:987:ALA:HA	1.95	0.47
5:B:1051:VAL:O	5:B:1055:LEU:N	2.48	0.46
2:F:62:PHE:HA	2:E:59:GLY:HA3	1.98	0.45
4:J:874:SER:O	4:J:878:TYR:CB	2.65	0.45
5:A:1366:LEU:O	5:A:1370:LEU:N	2.50	0.44
2:E:54:TRP:HA	2:E:87:LYS:HA	1.99	0.44
4:I:906:ALA:O	4:I:910:GLY:N	2.46	0.43
2:F:52:PRO:HA	2:F:53:THR:HA	1.84	0.43
2:F:89:GLY:HA2	2:E:89:GLY:HA2	2.01	0.43
5:A:1214:ILE:O	5:A:1218:TRP:CB	2.67	0.43
4:J:705:LEU:O	4:J:710:GLN:N	2.49	0.42
4:J:903:LEU:O	4:J:907:MET:CB	2.67	0.42
6:K:137:ALA:HB3	6:K:231:CYS:HA	2.01	0.42
4:J:778:SER:H	4:J:781:ALA:HB3	1.85	0.42
4:J:835:THR:O	4:J:839:ALA:HB2	2.20	0.42
5:A:1458:ALA:O	5:A:1462:PHE:CB	2.68	0.42
5:A:1449:VAL:O	5:A:1453:ALA:CB	2.68	0.42
2:F:54:TRP:HA	2:F:87:LYS:HA	2.02	0.41
5:A:1350:PRO:O	5:A:1354:VAL:N	2.53	0.41
5:A:1051:VAL:O	5:A:1055:LEU:N	2.54	0.41
5:A:1232:ILE:O	5:A:1236:VAL:CB	2.69	0.41

There are no symmetry-related clashes.

5.3 Torsion angles [\(i\)](#)

5.3.1 Protein backbone [\(i\)](#)

In the following table, the Percentiles column shows the percent Ramachandran outliers of the chain as a percentile score with respect to all PDB entries followed by that with respect to all EM entries.

The Analysed column shows the number of residues for which the backbone conformation was analysed, and the total number of residues.

Mol	Chain	Analysed	Favoured	Allowed	Outliers	Percentiles	
1	C	29/612 (5%)	29 (100%)	0	0	100	100
1	D	29/612 (5%)	29 (100%)	0	0	100	100
2	E	87/89 (98%)	83 (95%)	4 (5%)	0	100	100
2	F	87/89 (98%)	83 (95%)	4 (5%)	0	100	100
3	G	111/113 (98%)	107 (96%)	4 (4%)	0	100	100
3	H	111/113 (98%)	107 (96%)	4 (4%)	0	100	100
4	I	429/1281 (34%)	422 (98%)	7 (2%)	0	100	100
4	J	429/1281 (34%)	419 (98%)	10 (2%)	0	100	100
5	A	641/4646 (14%)	625 (98%)	16 (2%)	0	100	100
5	B	394/4646 (8%)	382 (97%)	12 (3%)	0	100	100
6	K	276/492 (56%)	256 (93%)	20 (7%)	0	100	100
All	All	2623/13974 (19%)	2542 (97%)	81 (3%)	0	100	100

There are no Ramachandran outliers to report.

5.3.2 Protein sidechains [i](#)

There are no protein residues with a non-rotameric sidechain to report in this entry.

5.3.3 RNA [i](#)

There are no RNA molecules in this entry.

5.4 Non-standard residues in protein, DNA, RNA chains [i](#)

There are no non-standard protein/DNA/RNA residues in this entry.

5.5 Carbohydrates [i](#)

There are no monosaccharides in this entry.

5.6 Ligand geometry [i](#)

There are no ligands in this entry.

5.7 Other polymers [i](#)

There are no such residues in this entry.

5.8 Polymer linkage issues [i](#)

There are no chain breaks in this entry.

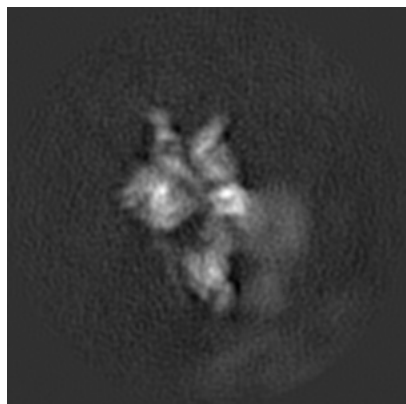
6 Map visualisation [i](#)

This section contains visualisations of the EMDB entry EMD-17830. These allow visual inspection of the internal detail of the map and identification of artifacts.

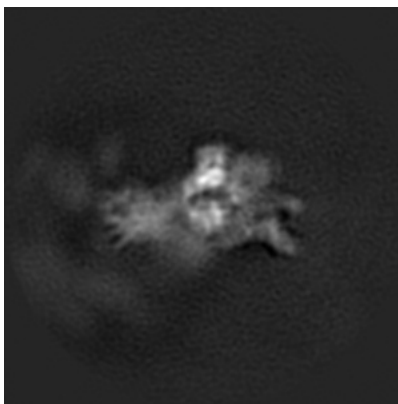
Images derived from a raw map, generated by summing the deposited half-maps, are presented below the corresponding image components of the primary map to allow further visual inspection and comparison with those of the primary map.

6.1 Orthogonal projections [i](#)

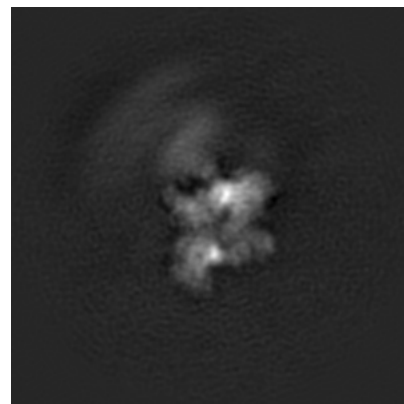
6.1.1 Primary map



X

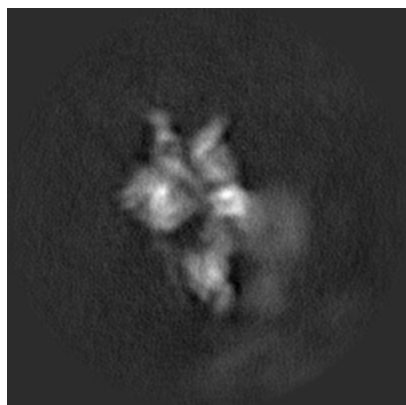


Y

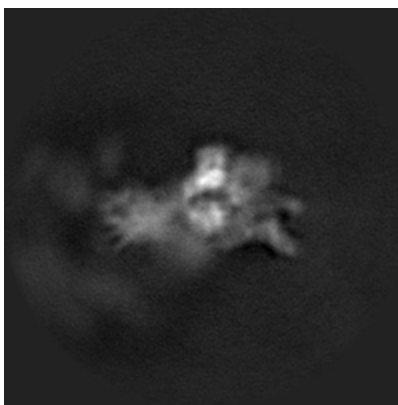


Z

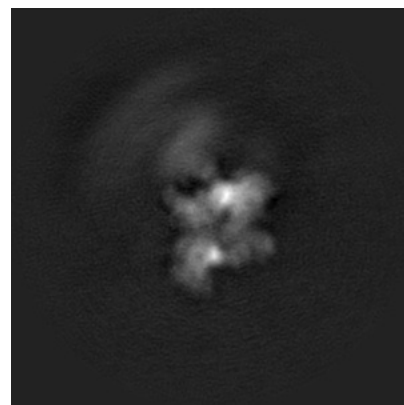
6.1.2 Raw map



X



Y

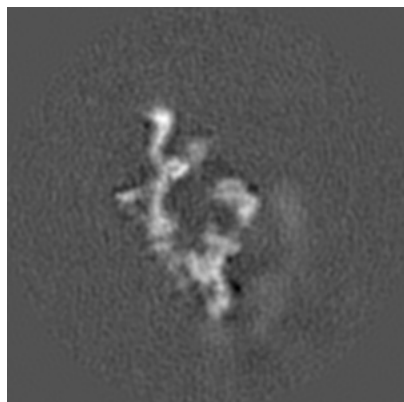


Z

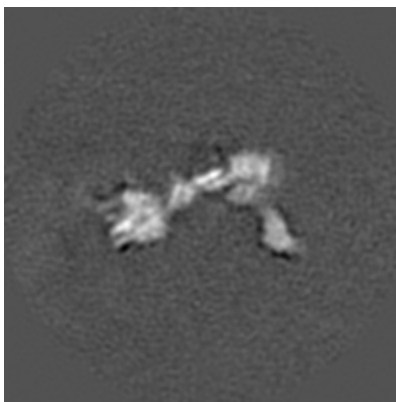
The images above show the map projected in three orthogonal directions.

6.2 Central slices [i](#)

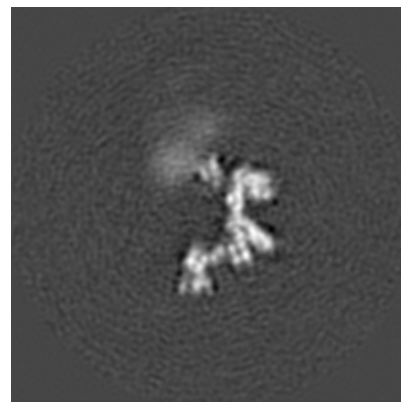
6.2.1 Primary map



X Index: 100

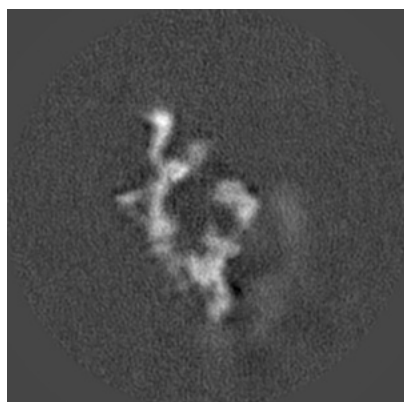


Y Index: 100

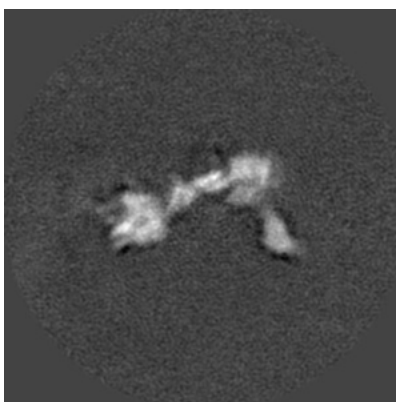


Z Index: 100

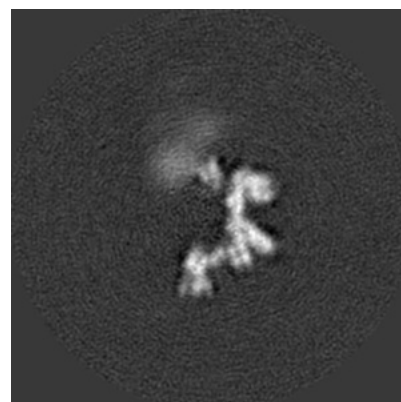
6.2.2 Raw map



X Index: 100



Y Index: 100

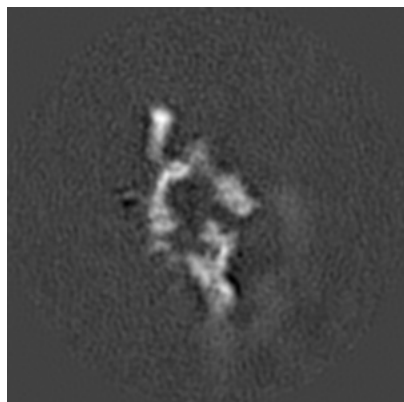


Z Index: 100

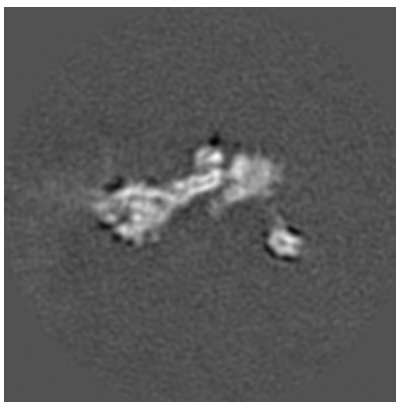
The images above show central slices of the map in three orthogonal directions.

6.3 Largest variance slices [i](#)

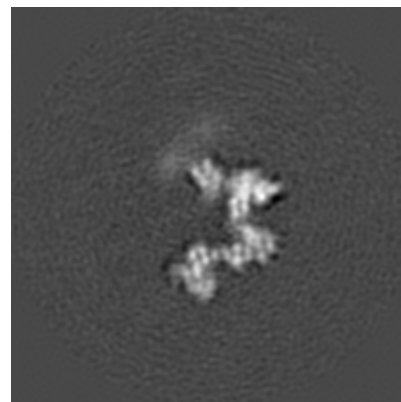
6.3.1 Primary map



X Index: 102

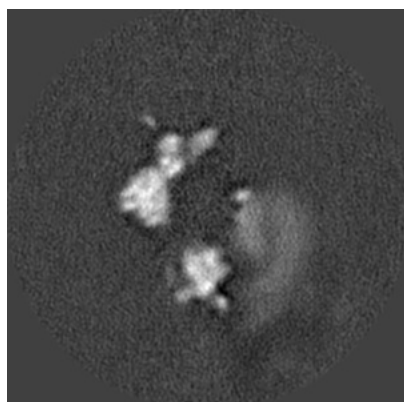


Y Index: 104

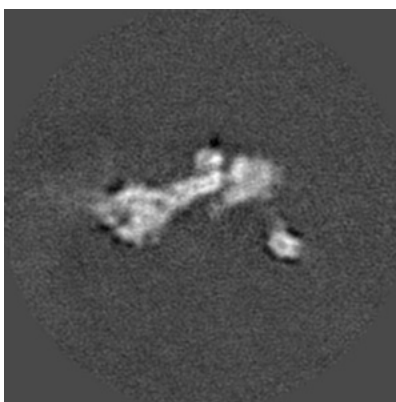


Z Index: 106

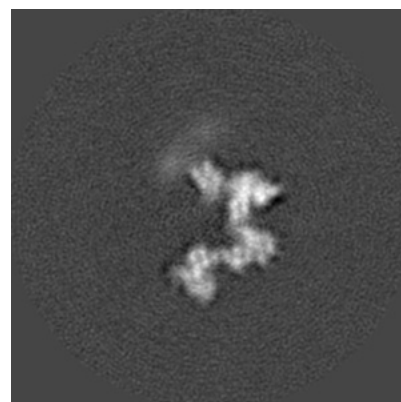
6.3.2 Raw map



X Index: 92



Y Index: 104

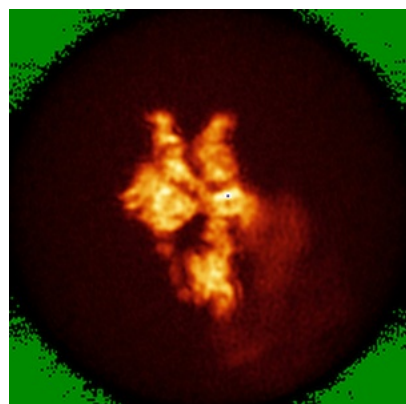


Z Index: 106

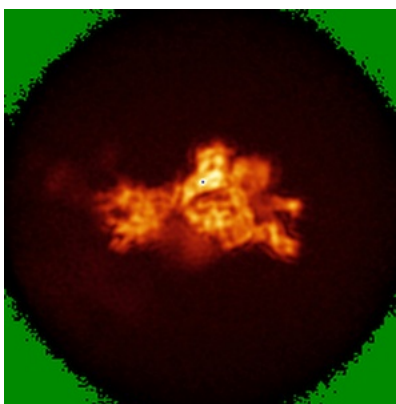
The images above show the largest variance slices of the map in three orthogonal directions.

6.4 Orthogonal standard-deviation projections (False-color) [i](#)

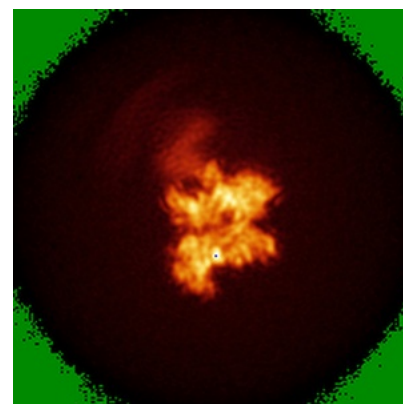
6.4.1 Primary map



X

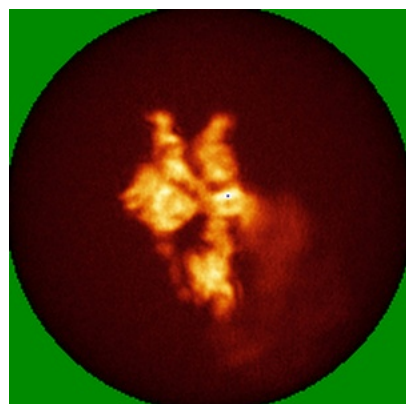


Y

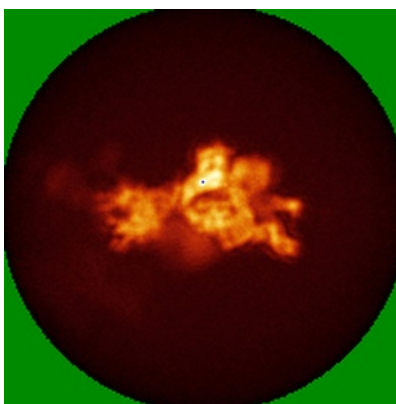


Z

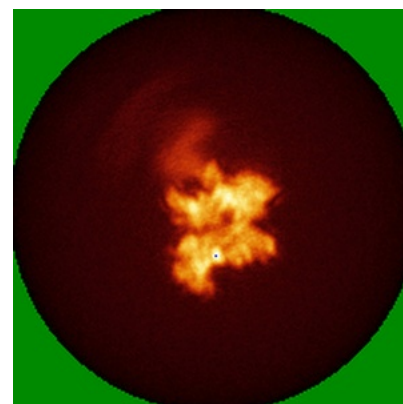
6.4.2 Raw map



X



Y

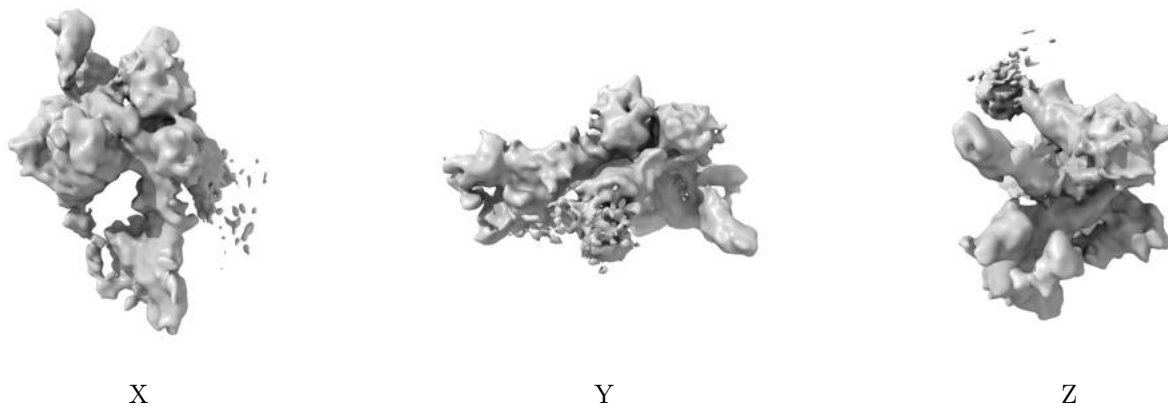


Z

The images above show the map standard deviation projections with false color in three orthogonal directions. Minimum values are shown in green, max in blue, and dark to light orange shades represent small to large values respectively.

6.5 Orthogonal surface views [i](#)

6.5.1 Primary map



The images above show the 3D surface view of the map at the recommended contour level 0.018. These images, in conjunction with the slice images, may facilitate assessment of whether an appropriate contour level has been provided.

6.5.2 Raw map



These images show the 3D surface of the raw map. The raw map's contour level was selected so that its surface encloses the same volume as the primary map does at its recommended contour level.

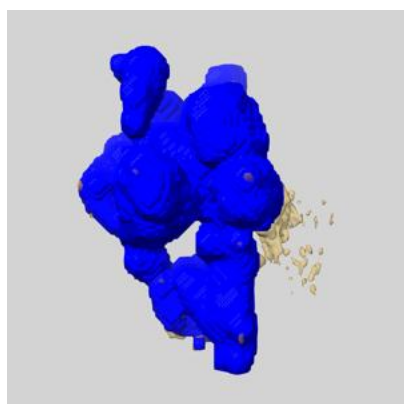
6.6 Mask visualisation [i](#)

This section shows the 3D surface view of the primary map at 50% transparency overlaid with the specified mask at 0% transparency

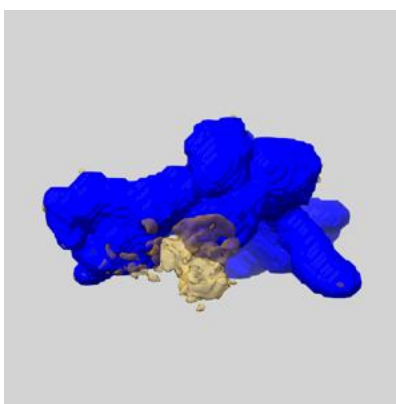
A mask typically either:

- Encompasses the whole structure
- Separates out a domain, a functional unit, a monomer or an area of interest from a larger structure

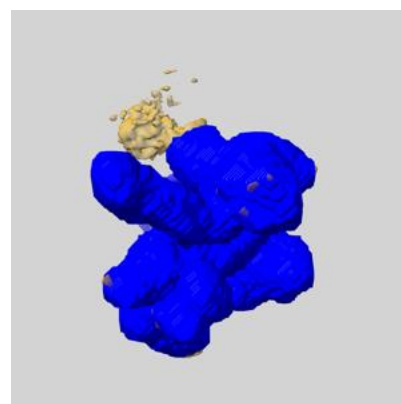
6.6.1 emd_17830_msk_1.map [i](#)



X



Y

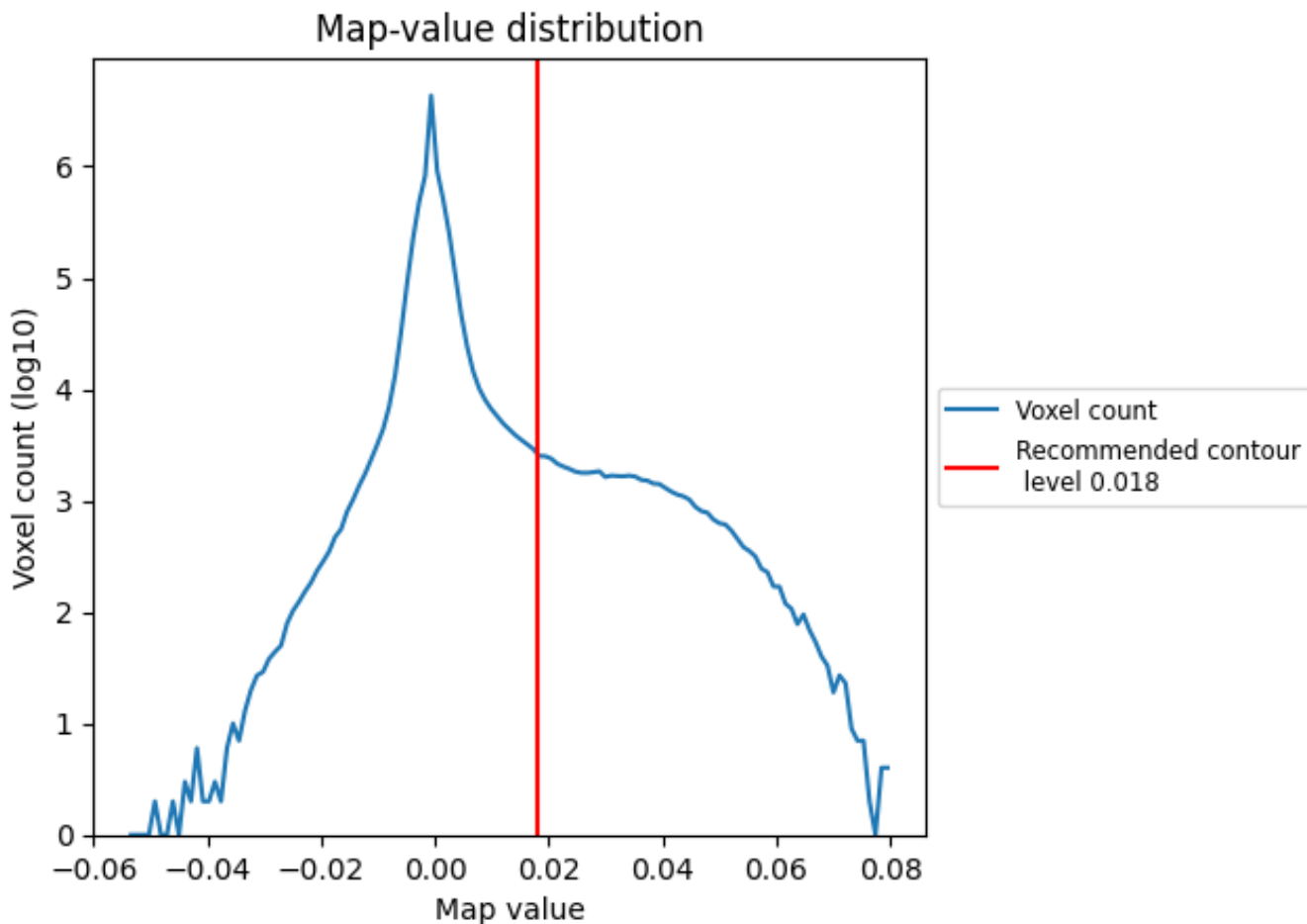


Z

7 Map analysis [i](#)

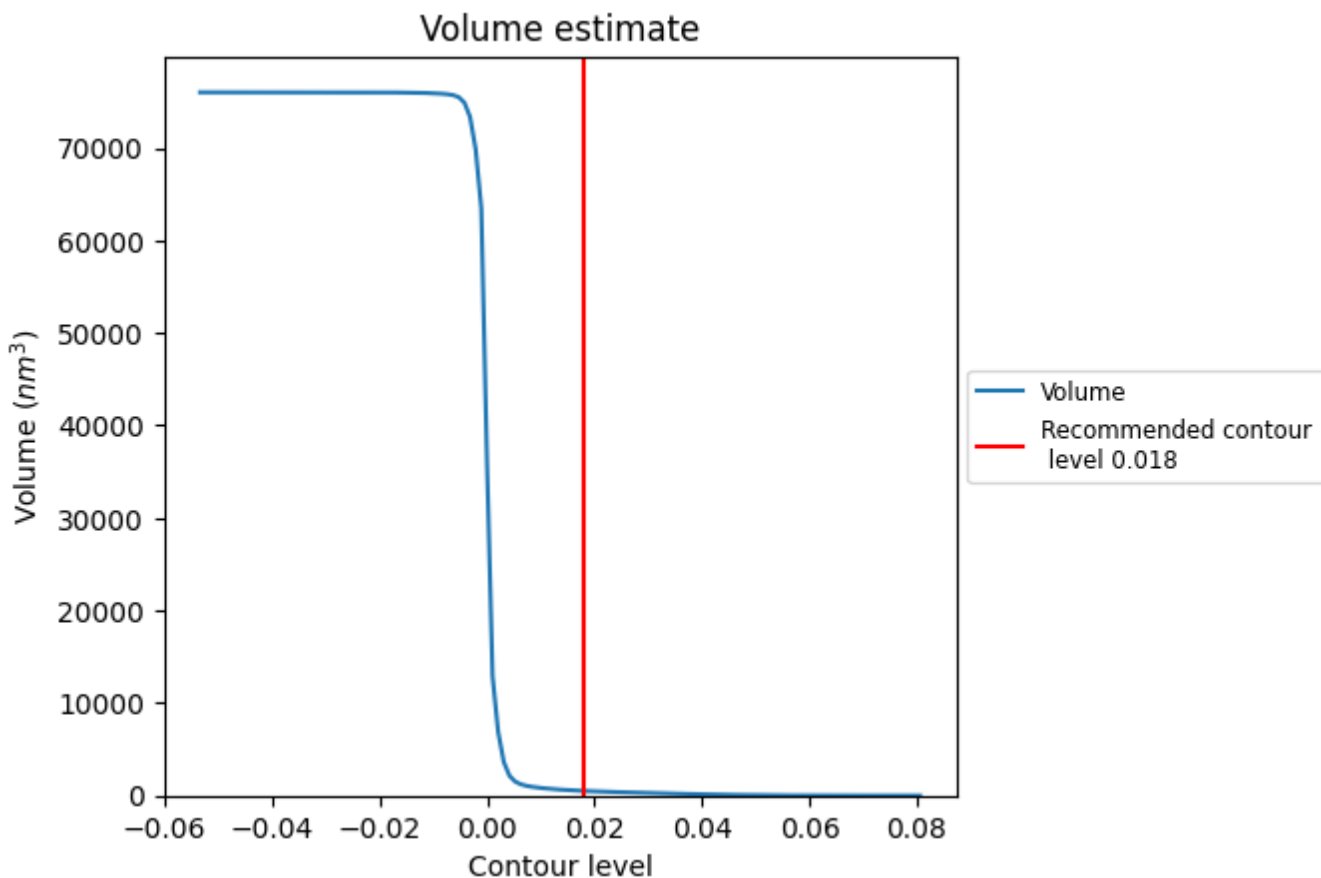
This section contains the results of statistical analysis of the map.

7.1 Map-value distribution [i](#)



The map-value distribution is plotted in 128 intervals along the x-axis. The y-axis is logarithmic. A spike in this graph at zero usually indicates that the volume has been masked.

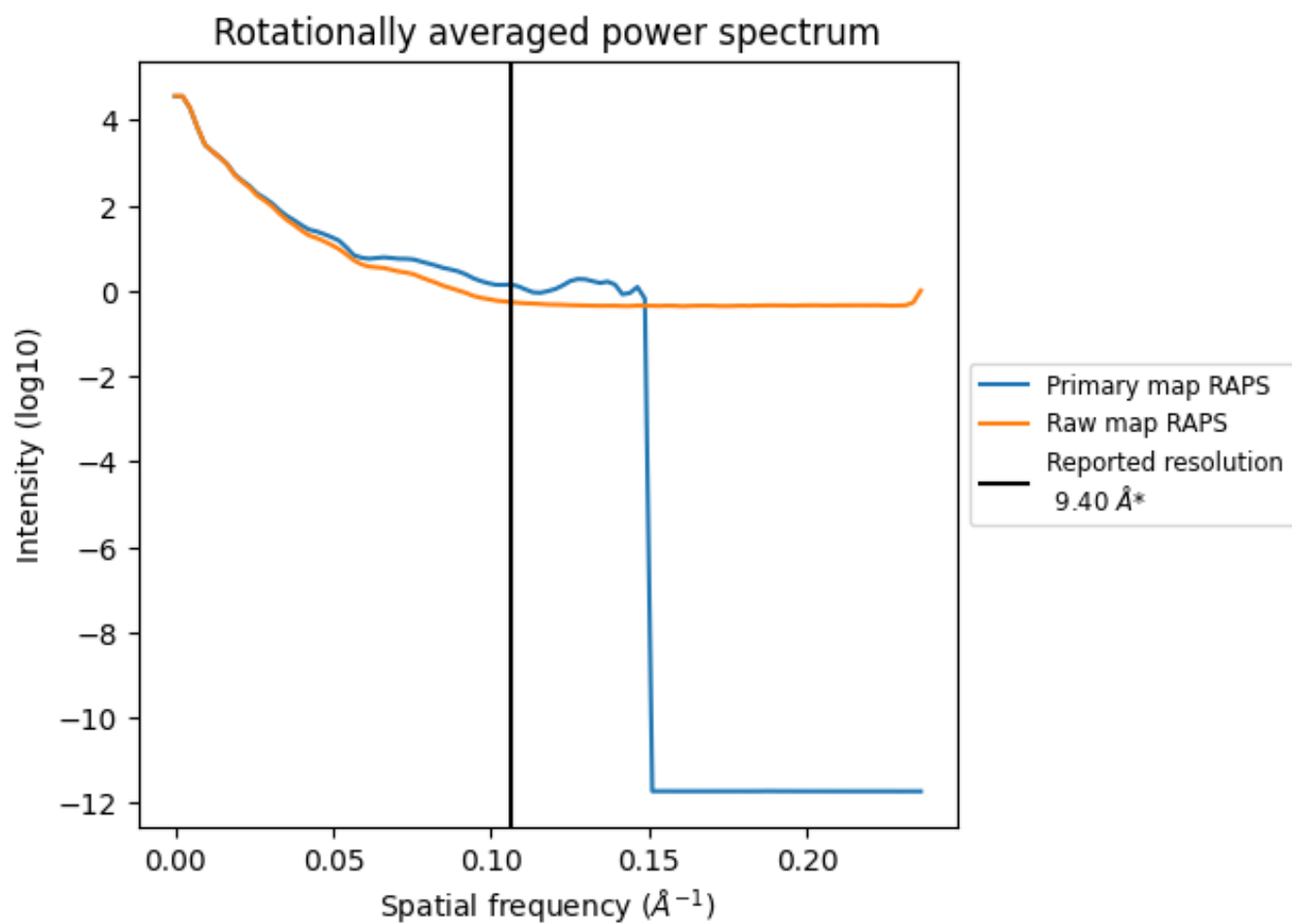
7.2 Volume estimate [i](#)



The volume at the recommended contour level is 503 nm³; this corresponds to an approximate mass of 454 kDa.

The volume estimate graph shows how the enclosed volume varies with the contour level. The recommended contour level is shown as a vertical line and the intersection between the line and the curve gives the volume of the enclosed surface at the given level.

7.3 Rotationally averaged power spectrum [i](#)

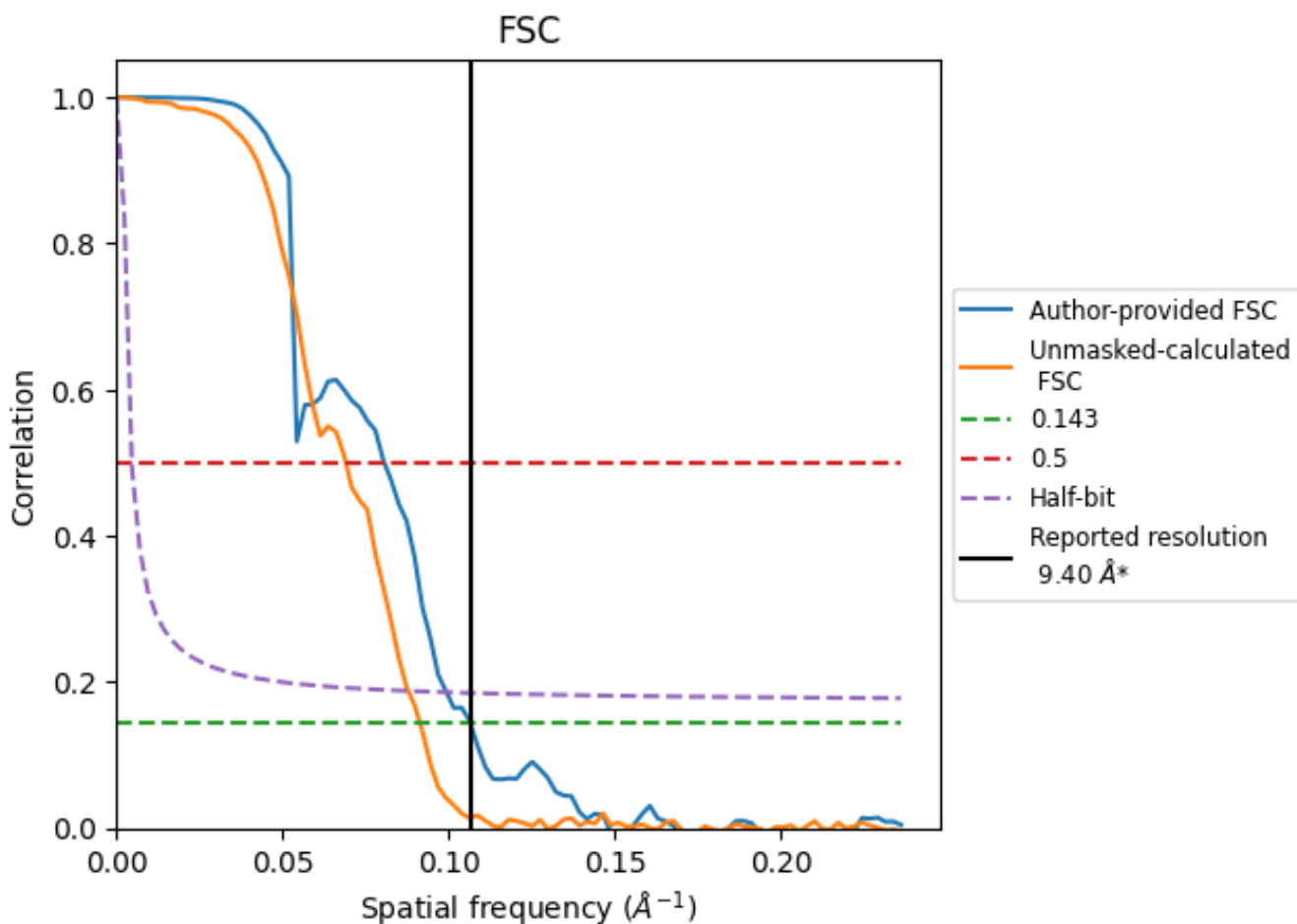


*Reported resolution corresponds to spatial frequency of 0.106 Å⁻¹

8 Fourier-Shell correlation [i](#)

Fourier-Shell Correlation (FSC) is the most commonly used method to estimate the resolution of single-particle and subtomogram-averaged maps. The shape of the curve depends on the imposed symmetry, mask and whether or not the two 3D reconstructions used were processed from a common reference. The reported resolution is shown as a black line. A curve is displayed for the half-bit criterion in addition to lines showing the 0.143 gold standard cut-off and 0.5 cut-off.

8.1 FSC [i](#)



*Reported resolution corresponds to spatial frequency of 0.106 Å⁻¹

8.2 Resolution estimates [i](#)

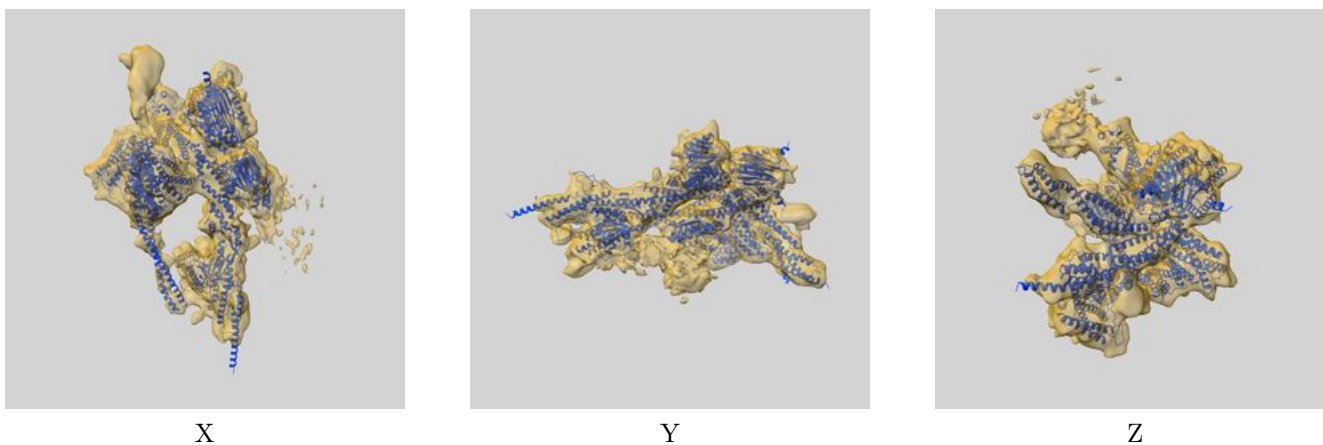
Resolution estimate (Å)	Estimation criterion (FSC cut-off)		
	0.143	0.5	Half-bit
Reported by author	9.40	-	-
Author-provided FSC curve	9.39	12.41	10.07
Unmasked-calculated*	10.95	14.49	11.39

*Resolution estimate based on FSC curve calculated by comparison of deposited half-maps. The value from deposited half-maps intersecting FSC 0.143 CUT-OFF 10.95 differs from the reported value 9.4 by more than 10 %

9 Map-model fit [i](#)

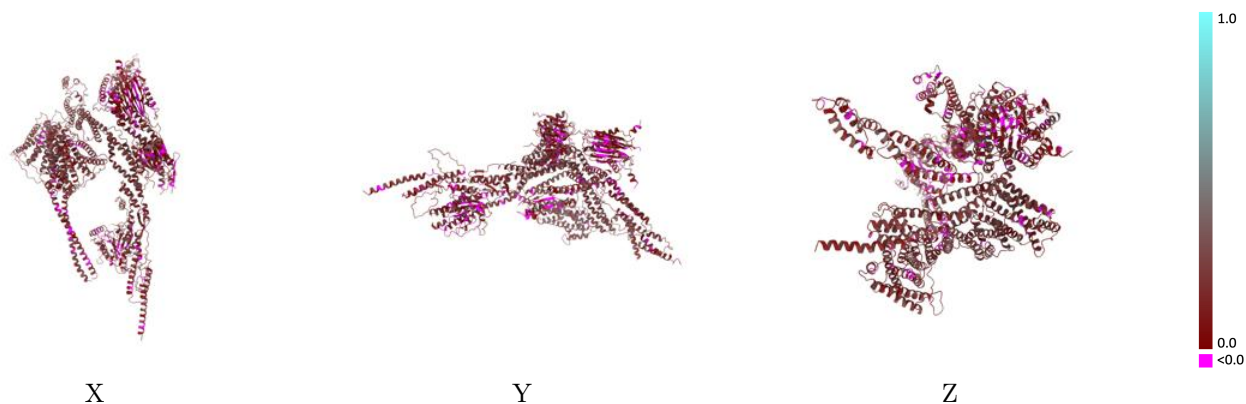
This section contains information regarding the fit between EMDB map EMD-17830 and PDB model 8PR0. Per-residue inclusion information can be found in section 3 on page 6.

9.1 Map-model overlay [i](#)



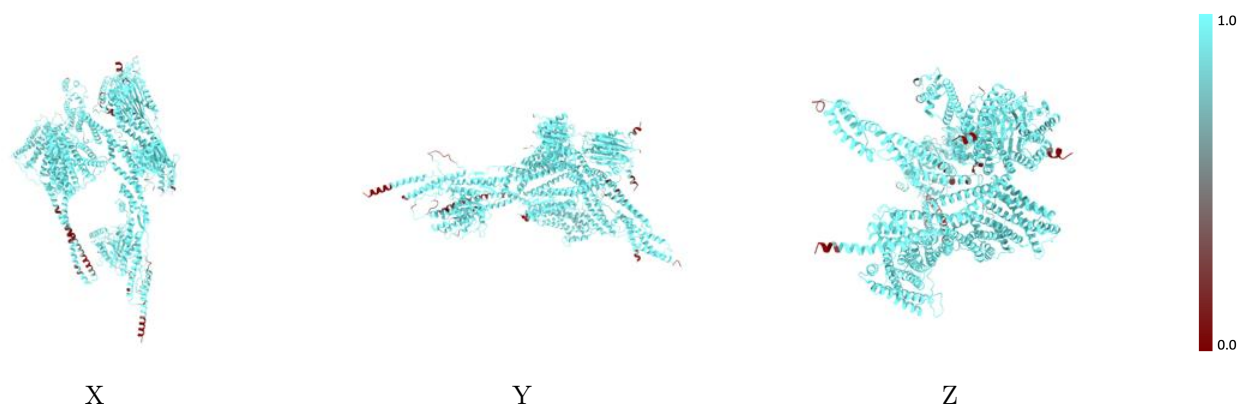
The images above show the 3D surface view of the map at the recommended contour level 0.018 at 50% transparency in yellow overlaid with a ribbon representation of the model coloured in blue. These images allow for the visual assessment of the quality of fit between the atomic model and the map.

9.2 Q-score mapped to coordinate model [\(i\)](#)



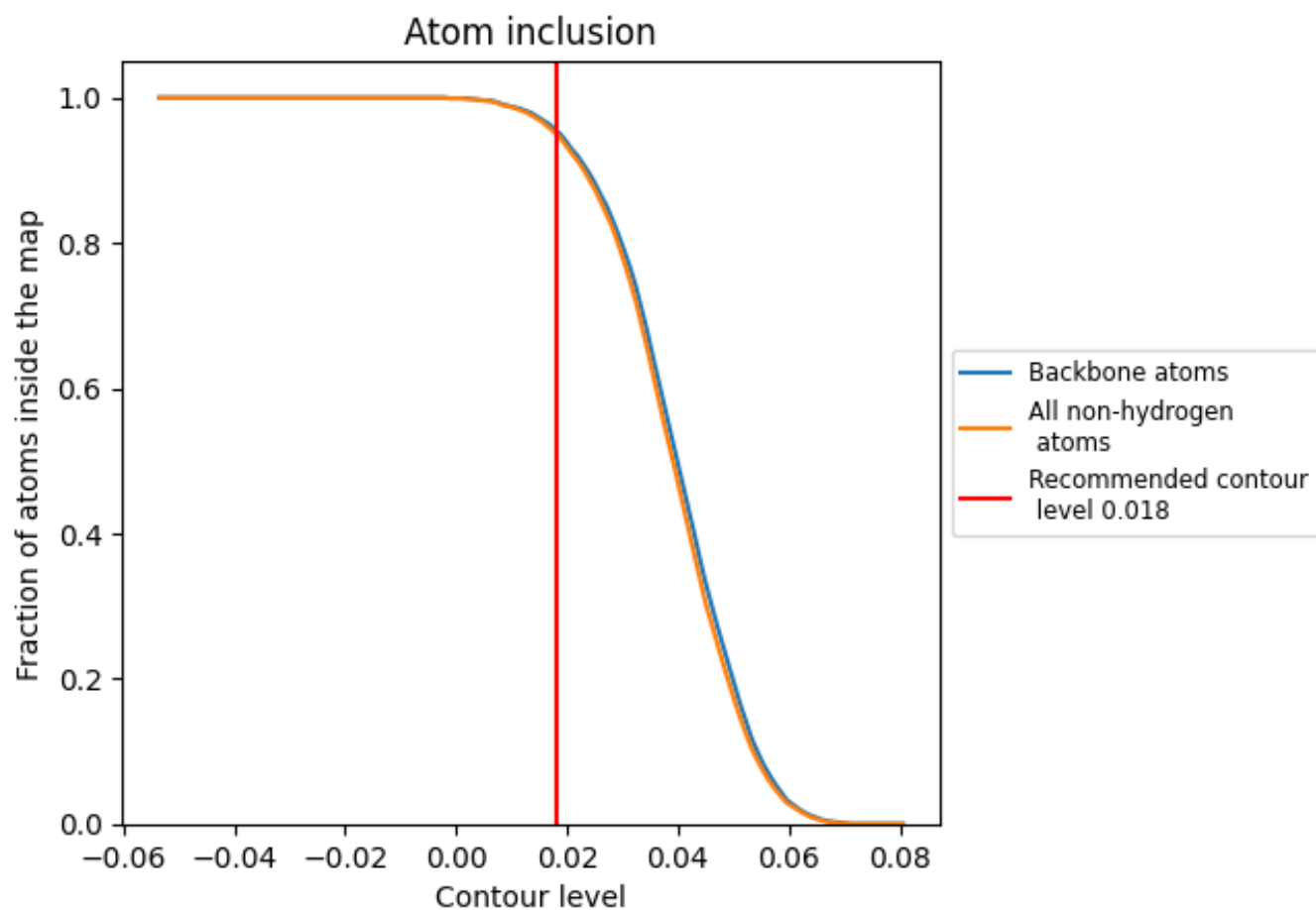
The images above show the model with each residue coloured according to its Q-score. This shows their resolvability in the map with higher Q-score values reflecting better resolvability. Please note: Q-score is calculating the resolvability of atoms, and thus high values are only expected at resolutions at which atoms can be resolved. Low Q-score values may therefore be expected for many entries.

9.3 Atom inclusion mapped to coordinate model [\(i\)](#)



The images above show the model with each residue coloured according to its atom inclusion. This shows to what extent they are inside the map at the recommended contour level (0.018).







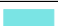



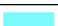





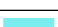



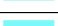



9.4 Atom inclusion [i](#)



At the recommended contour level, 96% of all backbone atoms, 95% of all non-hydrogen atoms, are inside the map.

9.5 Map-model fit summary

The table lists the average atom inclusion at the recommended contour level (0.018) and Q-score for the entire model and for each chain.

Chain	Atom inclusion	Q-score
All	 0.9510	 0.1690
A	 0.9300	 0.1990
B	 0.9430	 0.1610
C	 0.8960	 0.1030
D	 0.9220	 0.1030
E	 0.9820	 0.1520
F	 0.9770	 0.1420
G	 0.9370	 0.0890
H	 0.9340	 0.0870
I	 0.9410	 0.1840
J	 0.9770	 0.2110
K	 0.9850	 0.1200

