



wwPDB EM Validation Summary Report ⓘ

Dec 20, 2023 – 11:51 am GMT

PDB ID : 8PSO
EMDB ID : EMD-17858
Title : Tilapia Lake Virus polymerase in vRNA initiation state (core only)
Authors : Arragain, B.; Cusack, S.
Deposited on : 2023-07-13
Resolution : 2.40 Å (reported)

This is a wwPDB EM Validation Summary Report for a publicly released PDB entry.

We welcome your comments at validation@mail.wwpdb.org

A user guide is available at

<https://www.wwpdb.org/validation/2017/EMValidationReportHelp>

with specific help available everywhere you see the ⓘ symbol.

The types of validation reports are described at

<http://www.wwpdb.org/validation/2017/FAQs#types>.

The following versions of software and data (see [references ⓘ](#)) were used in the production of this report:

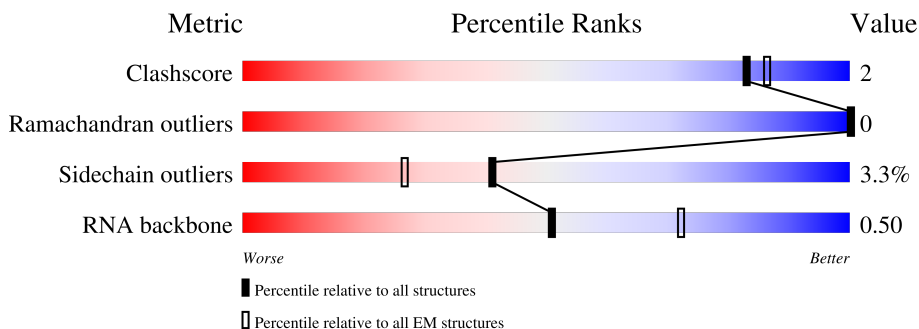
EMDB validation analysis : 0.0.1.dev70
Mogul : 1.8.4, CSD as541be (2020)
MolProbity : 4.02b-467
Percentile statistics : 20191225.v01 (using entries in the PDB archive December 25th 2019)
MapQ : 1.9.9
Ideal geometry (proteins) : Engh & Huber (2001)
Ideal geometry (DNA, RNA) : Parkinson et al. (1996)
Validation Pipeline (wwPDB-VP) : 2.36

1 Overall quality at a glance

The following experimental techniques were used to determine the structure:
ELECTRON MICROSCOPY

The reported resolution of this entry is 2.40 Å.

Percentile scores (ranging between 0-100) for global validation metrics of the entry are shown in the following graphic. The table shows the number of entries on which the scores are based.



Metric	Whole archive (#Entries)	EM structures (#Entries)
Clashscore	158937	4297
Ramachandran outliers	154571	4023
Sidechain outliers	154315	3826
RNA backbone	4643	859

The table below summarises the geometric issues observed across the polymeric chains and their fit to the map. The red, orange, yellow and green segments of the bar indicate the fraction of residues that contain outliers for ≥ 3 , 2, 1 and 0 types of geometric quality criteria respectively. A grey segment represents the fraction of residues that are not modelled. The numeric value for each fraction is indicated below the corresponding segment, with a dot representing fractions $\leq 5\%$. The upper red bar (where present) indicates the fraction of residues that have poor fit to the EM map (all-atom inclusion $< 40\%$). The numeric value is given above the bar.

Mol	Chain	Length	Quality of chain
1	A	419	 7% 26% 12% 55% 2% 25%
2	B	519	 7% 20% 12% 59% 2% 9%
3	C	478	 10% 16% 12% 58% 4% 71%
4	S	40	 15% 5% 12% 68% 2% 62%
4	V	40	 15% 7% 12% 66% 2% 68%
5	F	1	 100%

2 Entry composition [i](#)

There are 8 unique types of molecules in this entry. The entry contains 16213 atoms, of which 7949 are hydrogens and 0 are deuteriums.

In the tables below, the AltConf column contains the number of residues with at least one atom in alternate conformation and the Trace column contains the number of residues modelled with at most 2 atoms.

- Molecule 1 is a protein called Polymerase acidic protein (PA-like).

Mol	Chain	Residues	Atoms					AltConf	Trace	
			Total	C	H	N	O			S
1	A	316	5036	1584	2524	459	457	12	0	0

- Molecule 2 is a protein called Putative PB1.

Mol	Chain	Residues	Atoms					AltConf	Trace	
			Total	C	H	N	O			S
2	B	515	7974	2490	4001	694	759	30	1	0

- Molecule 3 is a protein called RNA-dependent RNA polymerase.

Mol	Chain	Residues	Atoms					AltConf	Trace	
			Total	C	H	N	O			S
3	C	140	2233	697	1123	201	210	2	0	0

There are 22 discrepancies between the modelled and reference sequences:

Chain	Residue	Modelled	Actual	Comment	Reference
C	391	LYS	ARG	conflict	UNP A0A7G3S745
C	458	GLY	-	expression tag	UNP A0A7G3S745
C	459	SER	-	expression tag	UNP A0A7G3S745
C	460	GLY	-	expression tag	UNP A0A7G3S745
C	461	SER	-	expression tag	UNP A0A7G3S745
C	462	GLU	-	expression tag	UNP A0A7G3S745
C	463	ASN	-	expression tag	UNP A0A7G3S745
C	464	LEU	-	expression tag	UNP A0A7G3S745
C	465	TYR	-	expression tag	UNP A0A7G3S745
C	466	PHE	-	expression tag	UNP A0A7G3S745
C	467	GLN	-	expression tag	UNP A0A7G3S745
C	468	GLY	-	expression tag	UNP A0A7G3S745
C	469	HIS	-	expression tag	UNP A0A7G3S745
C	470	HIS	-	expression tag	UNP A0A7G3S745
C	471	HIS	-	expression tag	UNP A0A7G3S745

Continued on next page...

Continued from previous page...

Chain	Residue	Modelled	Actual	Comment	Reference
C	472	HIS	-	expression tag	UNP A0A7G3S745
C	473	HIS	-	expression tag	UNP A0A7G3S745
C	474	HIS	-	expression tag	UNP A0A7G3S745
C	475	HIS	-	expression tag	UNP A0A7G3S745
C	476	HIS	-	expression tag	UNP A0A7G3S745
C	477	HIS	-	expression tag	UNP A0A7G3S745
C	478	HIS	-	expression tag	UNP A0A7G3S745

- Molecule 4 is a RNA chain called 5' vRNA end - vRNA loop (40-mer).

Mol	Chain	Residues	Atoms					AltConf	Trace	
			Total	C	H	N	O			P
4	V	13	406	121	138	42	92	13	0	0
4	S	15	476	145	151	60	105	15	0	0

- Molecule 5 is a DNA chain called DNA (5'-D*(CTP))-3').

Mol	Chain	Residues	Atoms					AltConf	Trace	
			Total	C	H	N	O			P
5	F	1	41	9	12	3	14	3	0	0

- Molecule 6 is ZINC ION (three-letter code: ZN) (formula: Zn) (labeled as "Ligand of Interest" by depositor).

Mol	Chain	Residues	Atoms		AltConf
6	A	1	Total	Zn	0
			1	1	

- Molecule 7 is MAGNESIUM ION (three-letter code: MG) (formula: Mg) (labeled as "Ligand of Interest" by depositor).

Mol	Chain	Residues	Atoms		AltConf
7	B	2	Total	Mg	0
			2	2	

- Molecule 8 is water.

Mol	Chain	Residues	Atoms		AltConf
8	A	10	Total	O	0
			10	10	

Continued on next page...

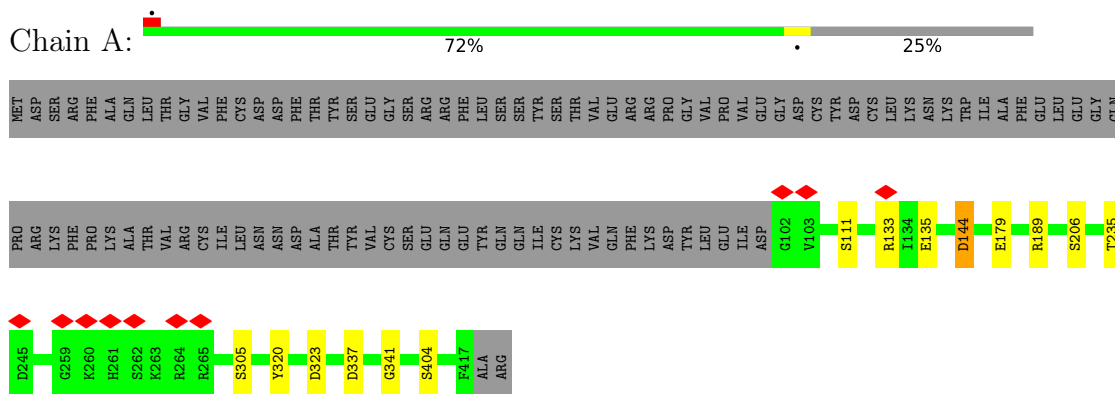
Continued from previous page...

Mol	Chain	Residues	Atoms		AltConf
8	B	27	Total 27	O 27	0
8	V	4	Total 4	O 4	0
8	S	2	Total 2	O 2	0
8	F	1	Total 1	O 1	0

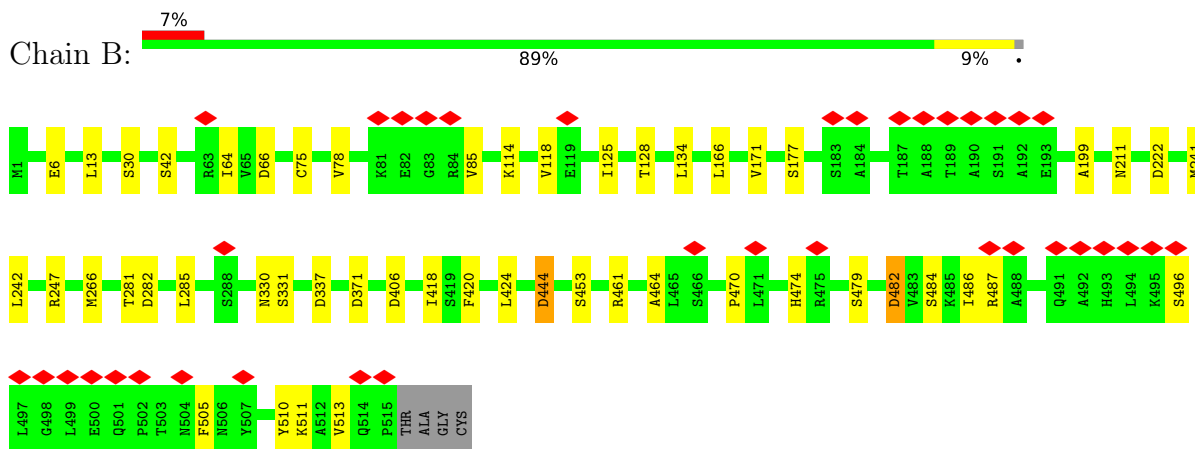
3 Residue-property plots

These plots are drawn for all protein, RNA, DNA and oligosaccharide chains in the entry. The first graphic for a chain summarises the proportions of the various outlier classes displayed in the second graphic. The second graphic shows the sequence view annotated by issues in geometry and atom inclusion in map density. Residues are color-coded according to the number of geometric quality criteria for which they contain at least one outlier: green = 0, yellow = 1, orange = 2 and red = 3 or more. A red diamond above a residue indicates a poor fit to the EM map for this residue (all-atom inclusion < 40%). Stretches of 2 or more consecutive residues without any outlier are shown as a green connector. Residues present in the sample, but not in the model, are shown in grey.

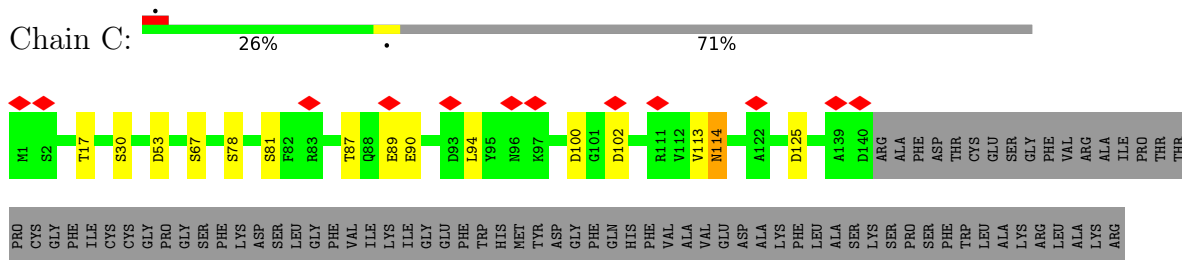
- Molecule 1: Polymerase acidic protein (PA-like)



- Molecule 2: Putative PB1



- Molecule 3: RNA-dependent RNA polymerase



LEU	ASN	GLN	LEU	VAL	LEU	LYS	GLU	ASP	PRO	LEU	VAL	LEU	ALA	ALA	GLU	CYS	PRO	CYS	LYS	LYS	VAL	TRP	ASN	ALA	SER	PHE	ALA	ALA	ALA	PRO	CYS	LYS	LYS	VAL	ALA	THR	ALA	ASP	LEU	ASP	ARG	ARG	ALA	GLY	GLY	ARG	ALA	THR	CYS	ASP	GLN	GLY	TRP	VAL	THR	THR	HIS	ARG	ASP	VAL	LEU	VAL	VAL	THR	ASN	TYR	LEU	THR	ALA	THR	ALA	ASN	HIS	VAL	GLY
SER	GLN	THR	LEU	PHE	CYS	PRO	ASP	GLN	ALA	LEU	SER	VAL	ARG	ASN	LEU	GLY	PRO	GLN	GLY	SER	ALA	ALA	VAL	VAL	GLY	SER	ILE	ALA	ALA	THR	PRO	ALA	LEU	THR	LEU	ASP	ARG	LEU	ASP	ARG	ALA	ALA	ALA	TYR	SER	ARG	GLY	THR	CYS	PRO	ALA	GLN	SER	ARG	TRP	VAL	THR	THR	HIS	LEU	GLN	ASP	VAL	VAL	THR	ASN	TYR	LEU	THR	ALA	THR	PRO	VAL	GLN	ILE
GLU	ASN	PHE	GLY	LEU	CYS	PRO	ASP	LEU	LYS	ARG	LEU	TYR	GLY	ASN	ILE	LYS	ALA	ARG	SER	PRO	ILE	GLU	TRP	ASN	ILE	ILE	THR	GLY	THR	ALA	LYS	VAL	VAL	ASN	LEU	ASP	LEU	ASP	VAL	VAL	VAL	GLN	VAL	ARG	GLY	TYR	PHE	LYS	ASP	MET	LYS	ALA	SER	VAL	LYS	VAL	THR	ASN	VAL	THR	VAL	THR	VAL	THR	ASN	GLY	ASP	LEU	ASN	ASN	GLN	ASP			
LEU	PRO	GLN	LYS	PRO	GLU	PRO	ASN	GLY	THR	PHE	GLN	TYR	GLY	HIS	HIS	ARG	LYS	LYS	ALA	LEU	MET	ARG	SER	LEU	ILE	LEU	LEU	THR	GLY	TYR	LYS	VAL	LYS	ARG	LEU	VAL	ASP	VAL	VAL	GLN	GLU	ASP	ARG	PHE	TYR	LYS	ASP	MET	ARG	VAL	VAL	GLU	ASN	ASN	PHE	THR	THR	VAL	THR	ASN	GLU	GLY	ASP	LEU	ASN	ASN	GLN	ASP							
GLY	SER	GLY	SER	GLU	SER	ASN	LEU	TYR	PHE	GLN	GLY	GLY	HIS	HIS	HIS	HIS	HIS	HIS	HIS	HIS	HIS	HIS	LEU	ILE	LEU	LEU	THR	GLY	TYR	LYS	VAL	LYS	ARG	LEU	VAL	ASP	VAL	VAL	GLN	GLU	ASP	ARG	PHE	TYR	LYS	ASP	MET	ARG	VAL	VAL	GLU	ASN	ASN	PHE	THR	THR	VAL	THR	ASN	GLU	GLY	ASP	LEU	ASN	ASN	GLN	ASP								

● Molecule 4: 5' vRNA end - vRNA loop (40-mer)



● Molecule 4: 5' vRNA end - vRNA loop (40-mer)



● Molecule 5: DNA (5'-D*(CTP))-3'



There are no outlier residues recorded for this chain.

4 Experimental information

Property	Value	Source
EM reconstruction method	SINGLE PARTICLE	Depositor
Imposed symmetry	POINT, C1	Depositor
Number of particles used	271170	Depositor
Resolution determination method	FSC 0.143 CUT-OFF	Depositor
CTF correction method	PHASE FLIPPING AND AMPLITUDE CORRECTION	Depositor
Microscope	FEI TITAN KRIOS	Depositor
Voltage (kV)	300	Depositor
Electron dose ($e^-/\text{\AA}^2$)	50	Depositor
Minimum defocus (nm)	800	Depositor
Maximum defocus (nm)	2000	Depositor
Magnification	Not provided	
Image detector	GATAN K3 BIOQUANTUM (6k x 4k)	Depositor
Maximum map value	0.223	Depositor
Minimum map value	-0.097	Depositor
Average map value	0.000	Depositor
Map value standard deviation	0.004	Depositor
Recommended contour level	0.035	Depositor
Map size (Å)	251.99998, 251.99998, 251.99998	wwPDB
Map dimensions	300, 300, 300	wwPDB
Map angles (°)	90.0, 90.0, 90.0	wwPDB
Pixel spacing (Å)	0.84, 0.84, 0.84	Depositor

5 Model quality [i](#)

5.1 Standard geometry [i](#)

Bond lengths and bond angles in the following residue types are not validated in this section: MG, ZN, CTP

The Z score for a bond length (or angle) is the number of standard deviations the observed value is removed from the expected value. A bond length (or angle) with $|Z| > 5$ is considered an outlier worth inspection. RMSZ is the root-mean-square of all Z scores of the bond lengths (or angles).

Mol	Chain	Bond lengths		Bond angles	
		RMSZ	# Z >5	RMSZ	# Z >5
1	A	0.24	0/2568	0.51	0/3470
2	B	0.25	0/4050	0.51	1/5481 (0.0%)
3	C	0.25	0/1129	0.51	0/1518
4	S	0.17	0/364	0.69	0/566
4	V	0.15	0/297	0.74	0/458
All	All	0.24	0/8408	0.53	1/11493 (0.0%)

There are no bond length outliers.

All (1) bond angle outliers are listed below:

Mol	Chain	Res	Type	Atoms	Z	Observed(°)	Ideal(°)
2	B	470	PRO	CA-N-CD	-6.03	103.06	111.50

There are no chirality outliers.

There are no planarity outliers.

5.2 Too-close contacts [i](#)

In the following table, the Non-H and H(model) columns list the number of non-hydrogen atoms and hydrogen atoms in the chain respectively. The H(added) column lists the number of hydrogen atoms added and optimized by MolProbity. The Clashes column lists the number of clashes within the asymmetric unit, whereas Symm-Clashes lists symmetry-related clashes.

Mol	Chain	Non-H	H(model)	H(added)	Clashes	Symm-Clashes
1	A	2512	2524	2523	10	0
2	B	3973	4001	3995	23	0
3	C	1110	1123	1123	7	0
4	S	325	151	161	4	0
4	V	268	138	139	1	0

Continued on next page...

Continued from previous page...

Mol	Chain	Non-H	H(model)	H(added)	Clashes	Symm-Clashes
5	F	29	12	12	0	0
6	A	1	0	0	0	0
7	B	2	0	0	0	0
8	A	10	0	0	1	0
8	B	27	0	0	0	0
8	F	1	0	0	0	0
8	S	2	0	0	0	0
8	V	4	0	0	0	0
All	All	8264	7949	7953	38	0

The all-atom clashscore is defined as the number of clashes found per 1000 atoms (including hydrogen atoms). The all-atom clashscore for this structure is 2.

The worst 5 of 38 close contacts within the same asymmetric unit are listed below, sorted by their clash magnitude.

Atom-1	Atom-2	Interatomic distance (Å)	Clash overlap (Å)
4:V:10:U:O4	4:S:10:A:N6	2.17	0.77
3:C:78:SER:OG	3:C:114:ASN:OD1	2.07	0.71
2:B:510:TYR:OH	3:C:90:GLU:OE2	2.09	0.70
2:B:444:ASP:OD1	2:B:444:ASP:N	2.31	0.63
1:A:404:SER:OG	8:A:601:HOH:O	2.13	0.62

There are no symmetry-related clashes.

5.3 Torsion angles [i](#)

5.3.1 Protein backbone [i](#)

In the following table, the Percentiles column shows the percent Ramachandran outliers of the chain as a percentile score with respect to all PDB entries followed by that with respect to all EM entries.

The Analysed column shows the number of residues for which the backbone conformation was analysed, and the total number of residues.

Mol	Chain	Analysed	Favoured	Allowed	Outliers	Percentiles	
1	A	314/419 (75%)	309 (98%)	5 (2%)	0	100	100
2	B	514/519 (99%)	503 (98%)	11 (2%)	0	100	100
3	C	138/478 (29%)	134 (97%)	4 (3%)	0	100	100

Continued on next page...

Continued from previous page...

Mol	Chain	Analysed	Favoured	Allowed	Outliers	Percentiles	
All	All	966/1416 (68%)	946 (98%)	20 (2%)	0	100	100

There are no Ramachandran outliers to report.

5.3.2 Protein sidechains [i](#)

In the following table, the Percentiles column shows the percent sidechain outliers of the chain as a percentile score with respect to all PDB entries followed by that with respect to all EM entries.

The Analysed column shows the number of residues for which the sidechain conformation was analysed, and the total number of residues.

Mol	Chain	Analysed	Rotameric	Outliers	Percentiles	
1	A	272/365 (74%)	267 (98%)	5 (2%)	59	76
2	B	445/447 (100%)	429 (96%)	16 (4%)	35	54
3	C	122/405 (30%)	115 (94%)	7 (6%)	20	33
All	All	839/1217 (69%)	811 (97%)	28 (3%)	41	57

5 of 28 residues with a non-rotameric sidechain are listed below:

Mol	Chain	Res	Type
2	B	444	ASP
3	C	125	ASP
2	B	482	ASP
3	C	67	SER
2	B	474	HIS

Sometimes sidechains can be flipped to improve hydrogen bonding and reduce clashes. There are no such sidechains identified.

5.3.3 RNA [i](#)

Mol	Chain	Analysed	Backbone Outliers	Pucker Outliers
4	S	15/40 (37%)	3 (20%)	1 (6%)
4	V	12/40 (30%)	4 (33%)	0
All	All	27/80 (33%)	7 (25%)	1 (3%)

5 of 7 RNA backbone outliers are listed below:

Mol	Chain	Res	Type
4	V	5	A
4	V	7	C
4	V	10	U
4	V	11	C
4	S	2	U

All (1) RNA pucker outliers are listed below:

Mol	Chain	Res	Type
4	S	1	G

5.4 Non-standard residues in protein, DNA, RNA chains [i](#)

There are no non-standard protein/DNA/RNA residues in this entry.

5.5 Carbohydrates [i](#)

There are no monosaccharides in this entry.

5.6 Ligand geometry [i](#)

Of 3 ligands modelled in this entry, 3 are monoatomic - leaving 0 for Mogul analysis.

There are no bond length outliers.

There are no bond angle outliers.

There are no chirality outliers.

There are no torsion outliers.

There are no ring outliers.

No monomer is involved in short contacts.

5.7 Other polymers [i](#)

There are no such residues in this entry.

5.8 Polymer linkage issues [i](#)

There are no chain breaks in this entry.

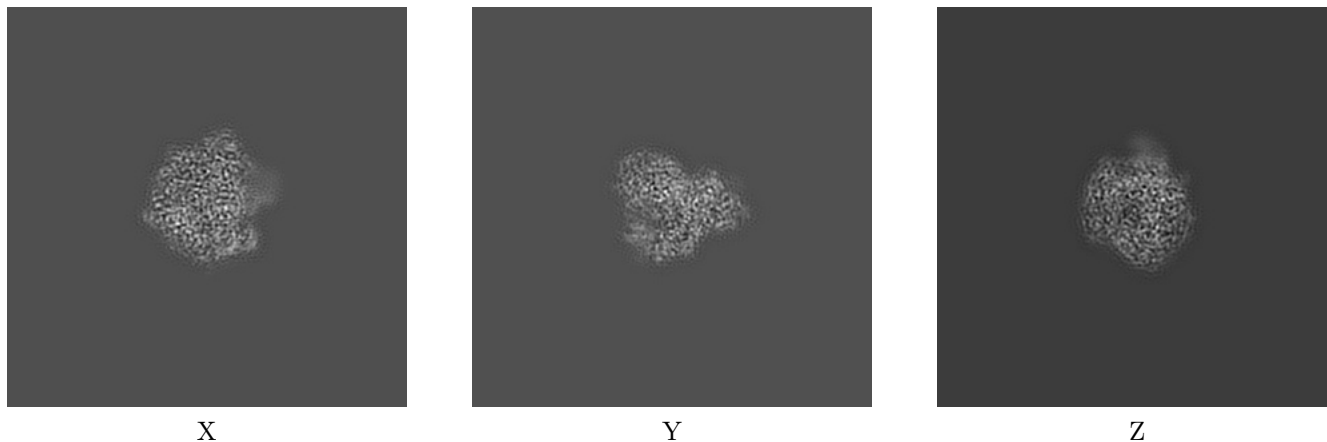
6 Map visualisation [i](#)

This section contains visualisations of the EMDB entry EMD-17858. These allow visual inspection of the internal detail of the map and identification of artifacts.

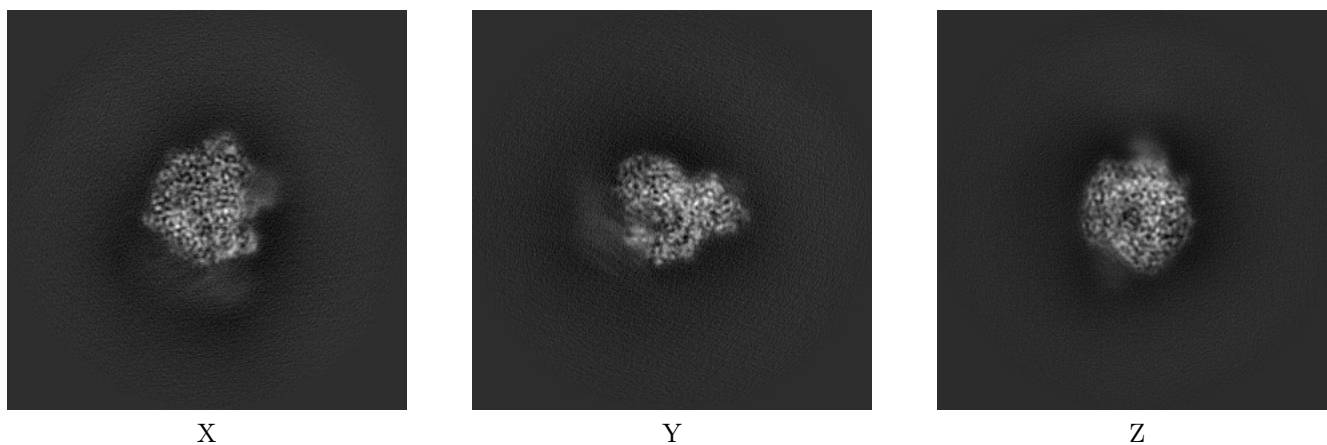
Images derived from a raw map, generated by summing the deposited half-maps, are presented below the corresponding image components of the primary map to allow further visual inspection and comparison with those of the primary map.

6.1 Orthogonal projections [i](#)

6.1.1 Primary map



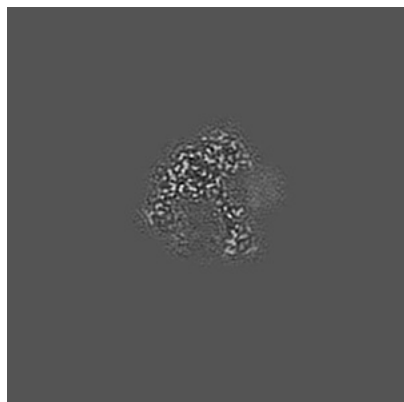
6.1.2 Raw map



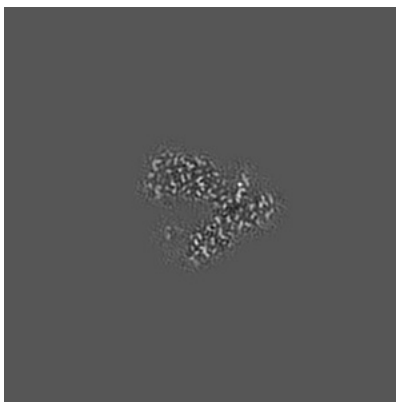
The images above show the map projected in three orthogonal directions.

6.2 Central slices [i](#)

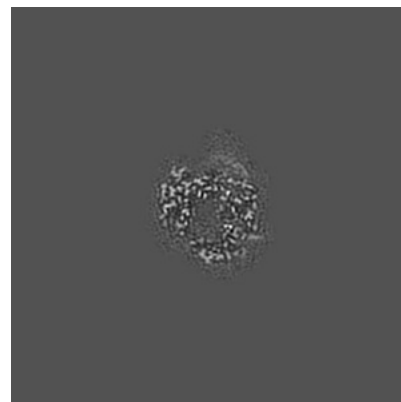
6.2.1 Primary map



X Index: 150

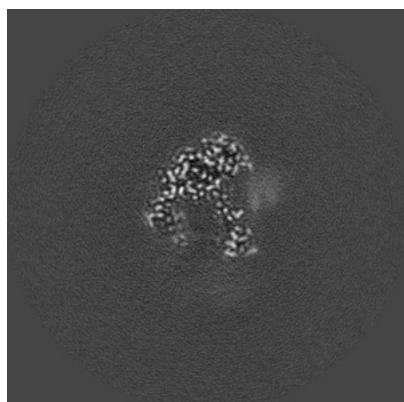


Y Index: 150

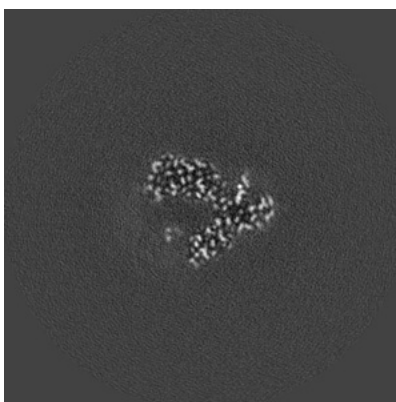


Z Index: 150

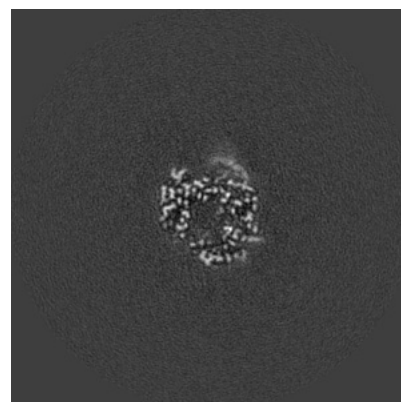
6.2.2 Raw map



X Index: 150



Y Index: 150

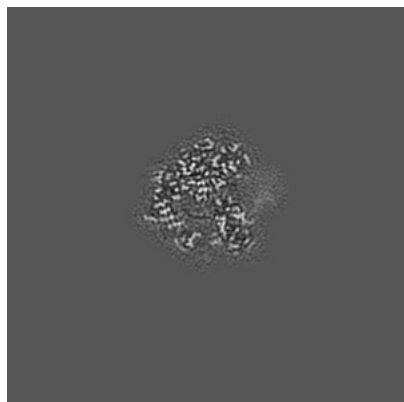


Z Index: 150

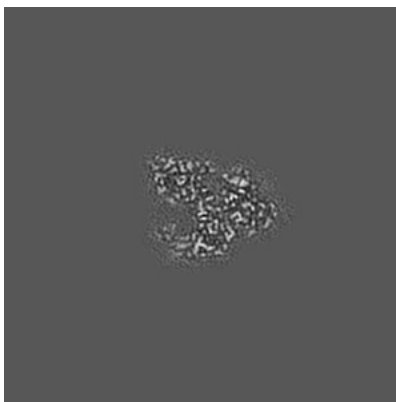
The images above show central slices of the map in three orthogonal directions.

6.3 Largest variance slices [i](#)

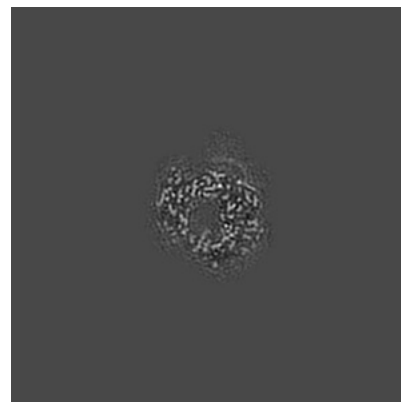
6.3.1 Primary map



X Index: 155

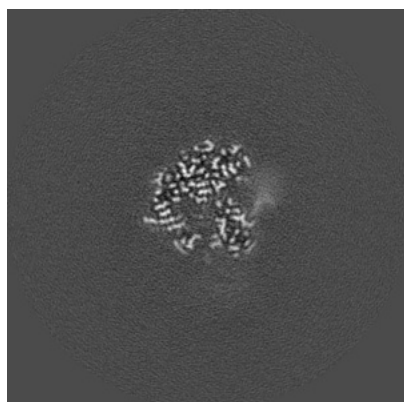


Y Index: 159

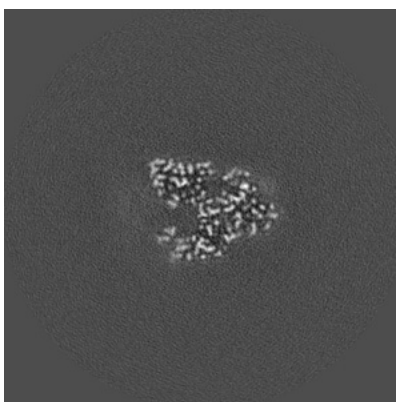


Z Index: 148

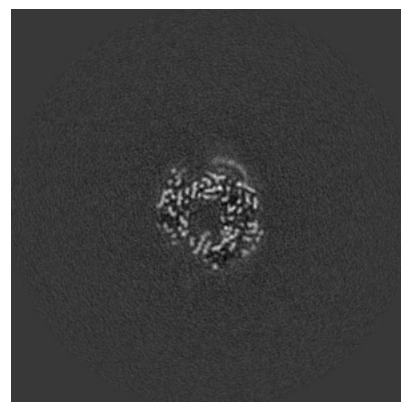
6.3.2 Raw map



X Index: 155



Y Index: 158

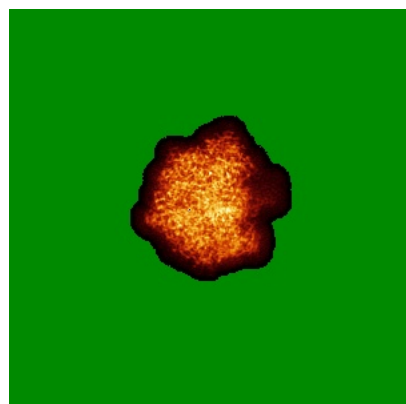


Z Index: 148

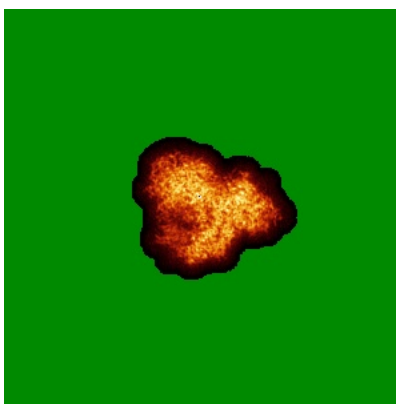
The images above show the largest variance slices of the map in three orthogonal directions.

6.4 Orthogonal standard-deviation projections (False-color) [i](#)

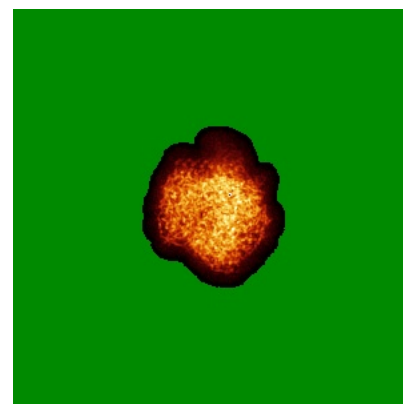
6.4.1 Primary map



X

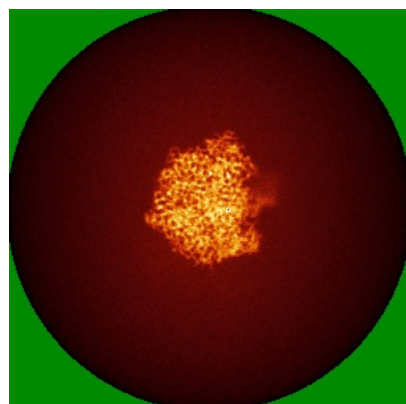


Y

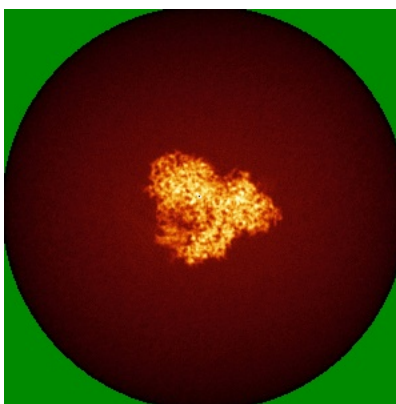


Z

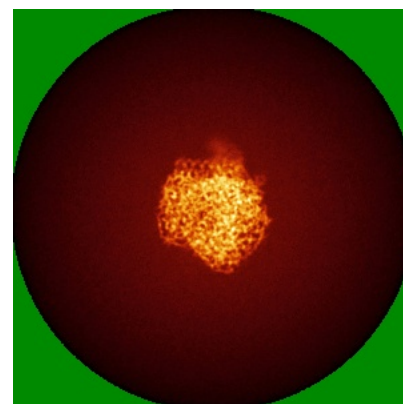
6.4.2 Raw map



X



Y

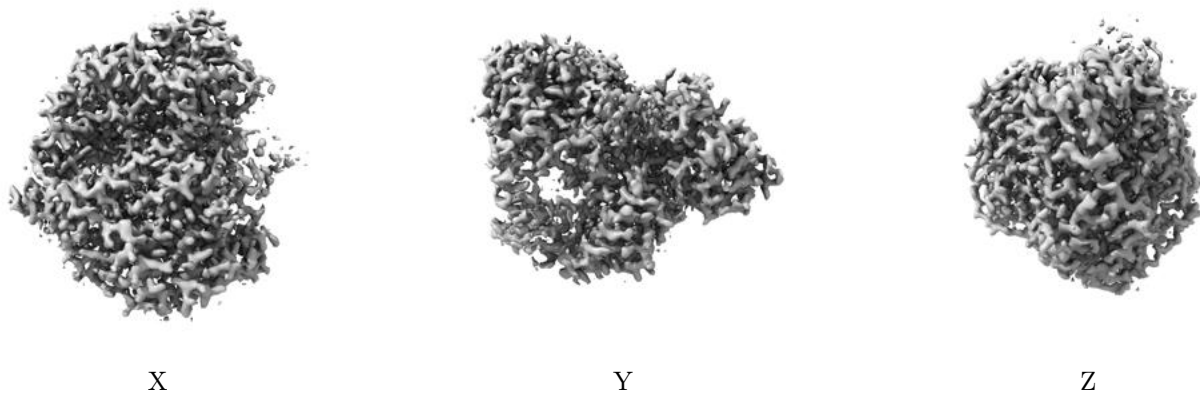


Z

The images above show the map standard deviation projections with false color in three orthogonal directions. Minimum values are shown in green, max in blue, and dark to light orange shades represent small to large values respectively.

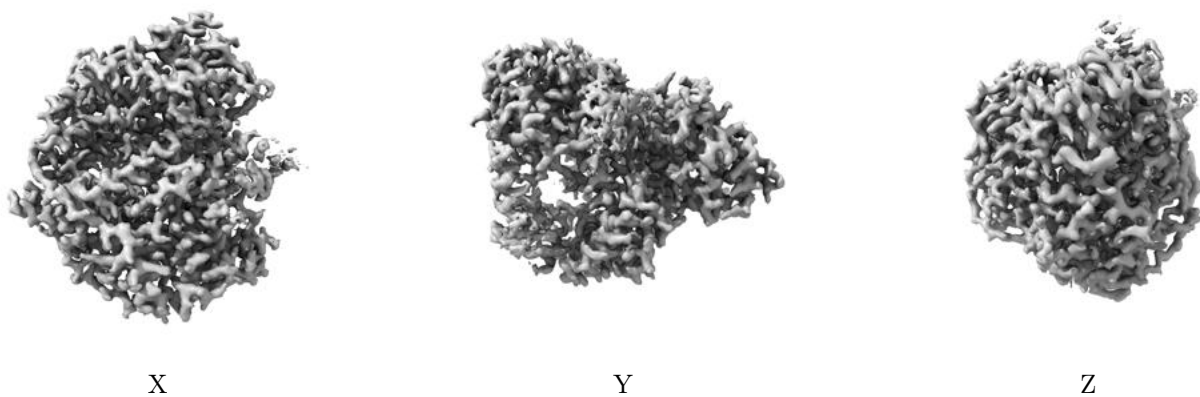
6.5 Orthogonal surface views [i](#)

6.5.1 Primary map



The images above show the 3D surface view of the map at the recommended contour level 0.035. These images, in conjunction with the slice images, may facilitate assessment of whether an appropriate contour level has been provided.

6.5.2 Raw map



These images show the 3D surface of the raw map. The raw map's contour level was selected so that its surface encloses the same volume as the primary map does at its recommended contour level.

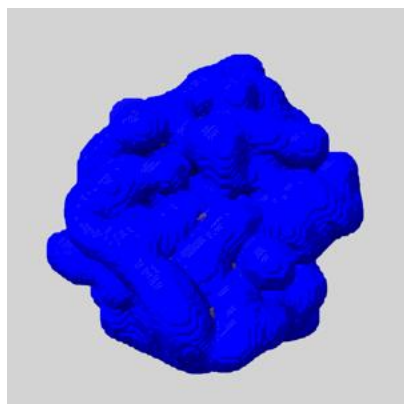
6.6 Mask visualisation [i](#)

This section shows the 3D surface view of the primary map at 50% transparency overlaid with the specified mask at 0% transparency

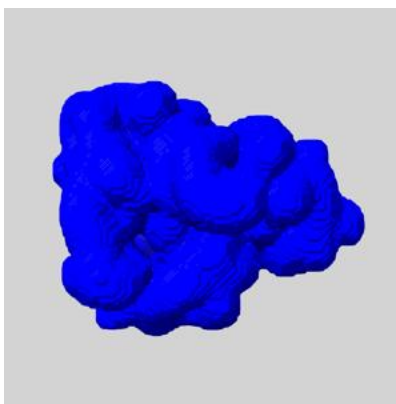
A mask typically either:

- Encompasses the whole structure
- Separates out a domain, a functional unit, a monomer or an area of interest from a larger structure

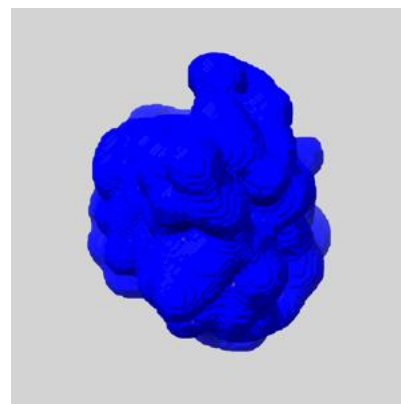
6.6.1 emd_17858_msk_1.map [i](#)



X



Y

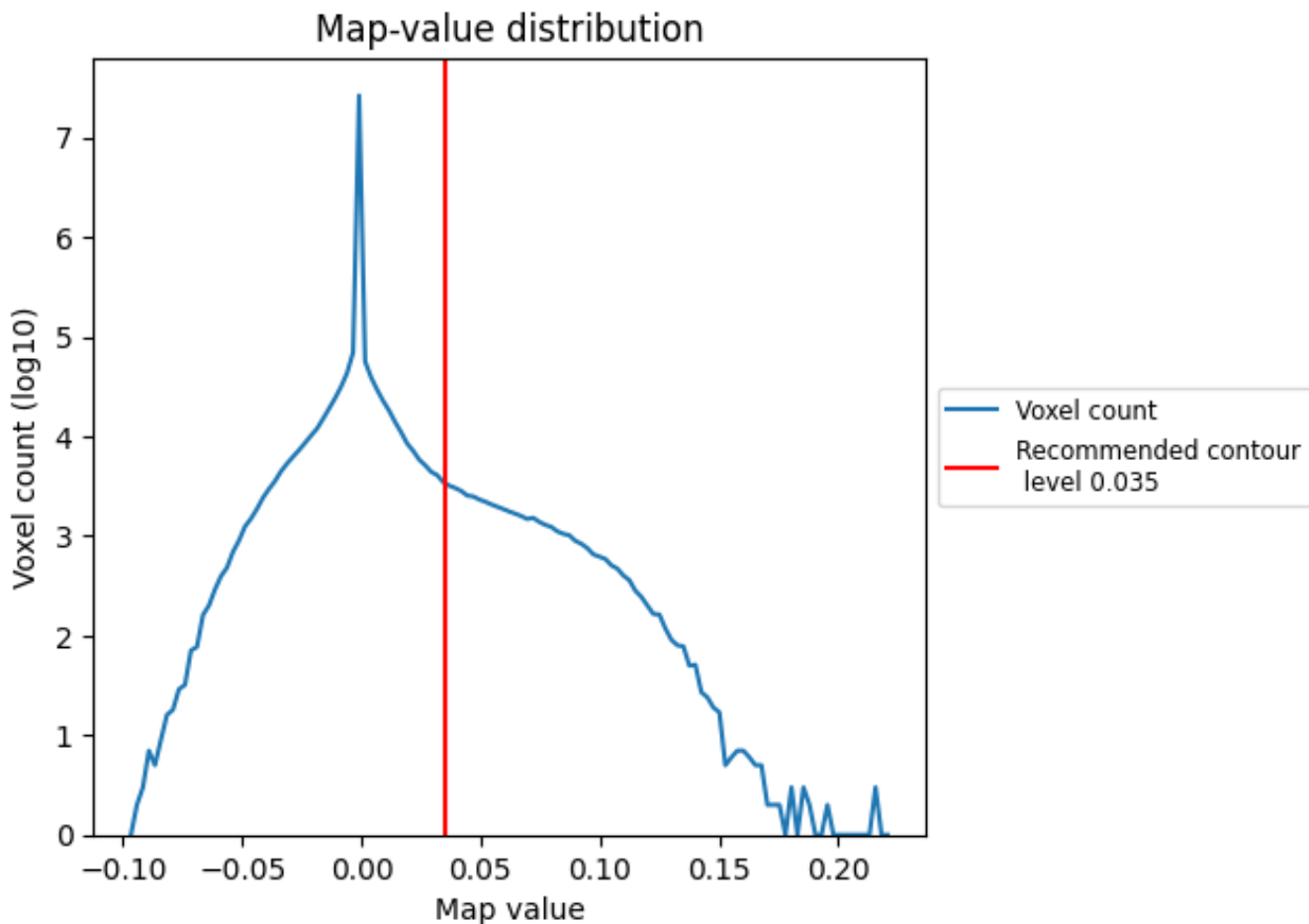


Z

7 Map analysis [i](#)

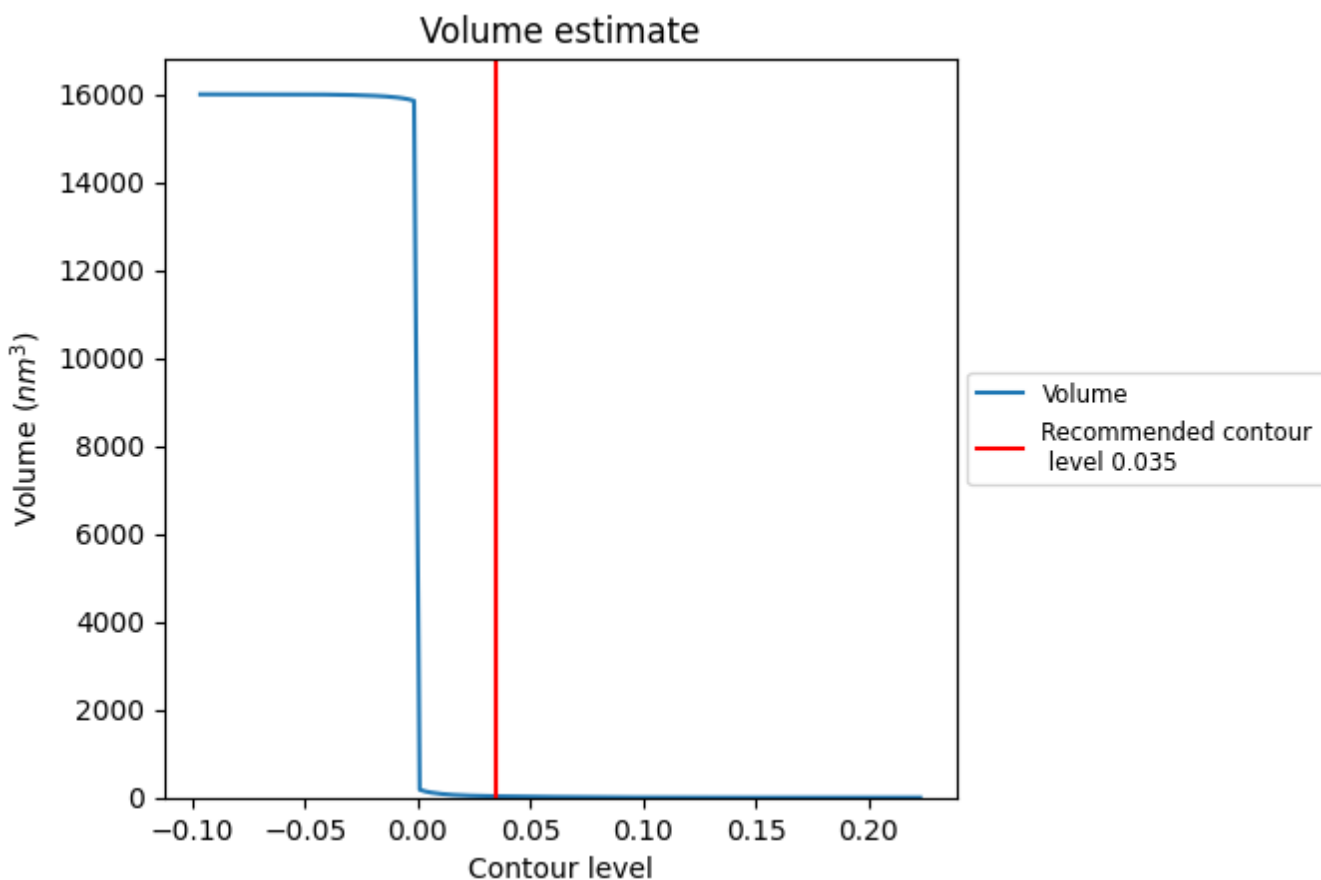
This section contains the results of statistical analysis of the map.

7.1 Map-value distribution [i](#)



The map-value distribution is plotted in 128 intervals along the x-axis. The y-axis is logarithmic. A spike in this graph at zero usually indicates that the volume has been masked.

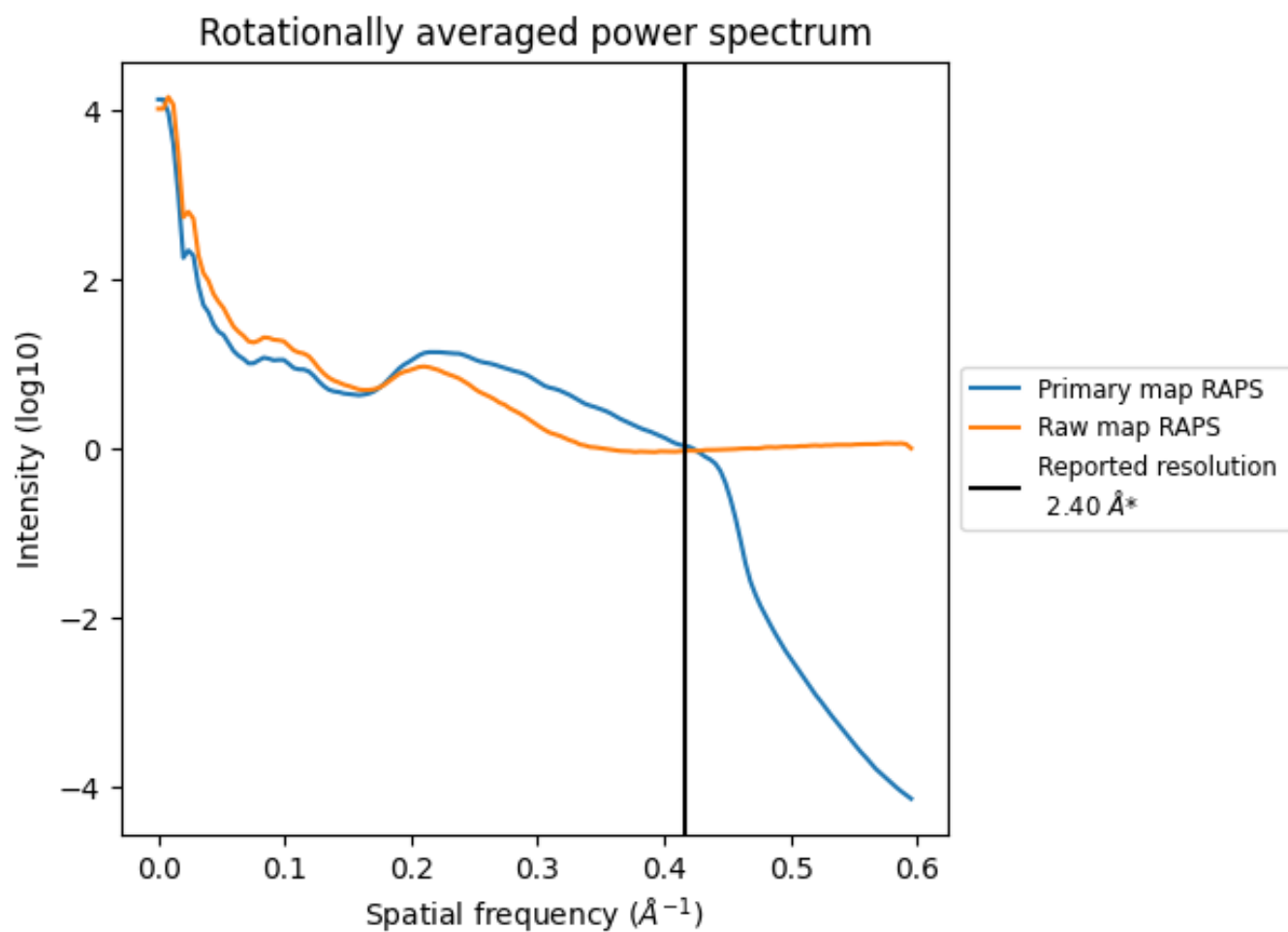
7.2 Volume estimate [\(i\)](#)



The volume at the recommended contour level is 30 nm³; this corresponds to an approximate mass of 27 kDa.

The volume estimate graph shows how the enclosed volume varies with the contour level. The recommended contour level is shown as a vertical line and the intersection between the line and the curve gives the volume of the enclosed surface at the given level.

7.3 Rotationally averaged power spectrum i

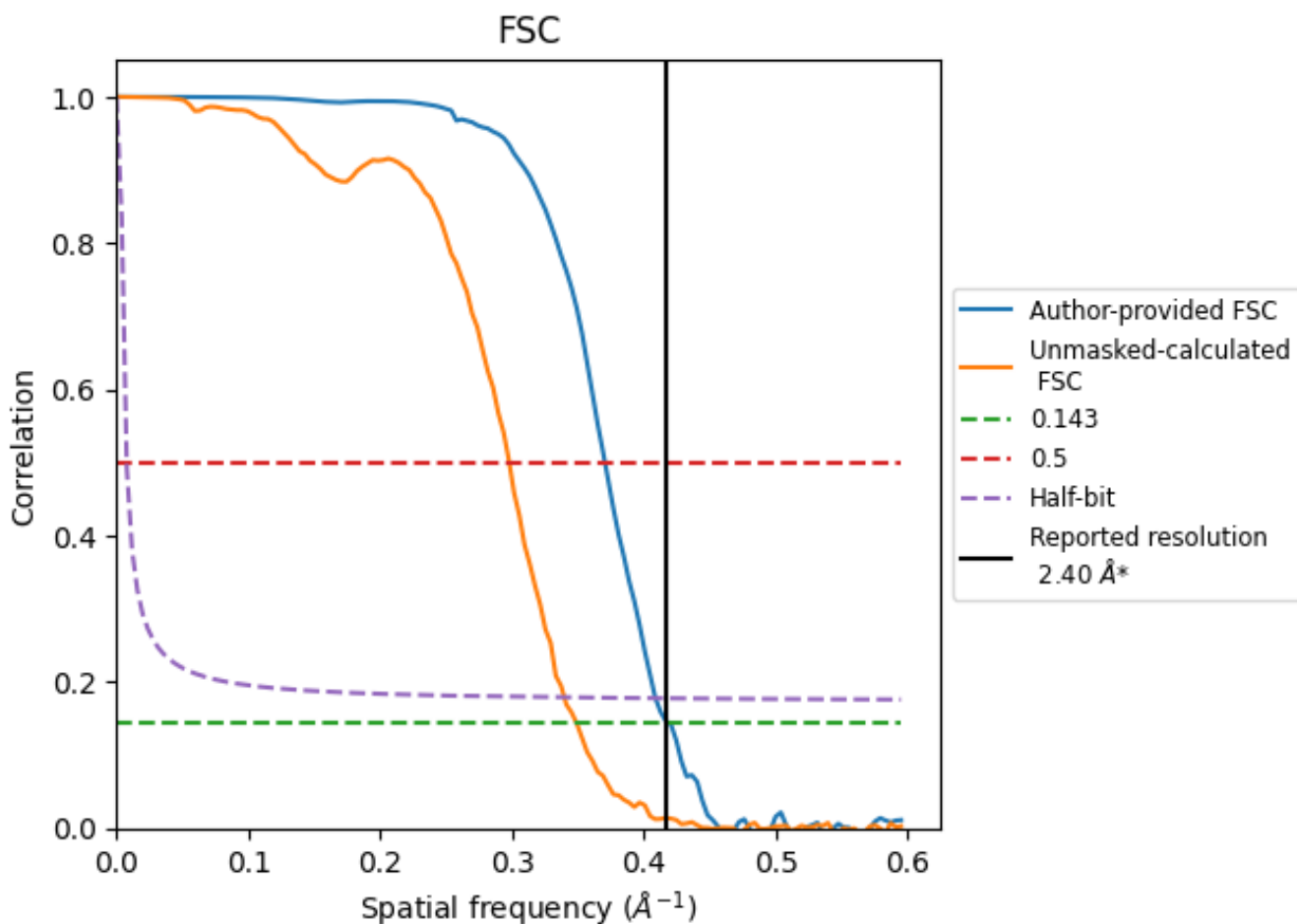


*Reported resolution corresponds to spatial frequency of 0.417 Å⁻¹

8 Fourier-Shell correlation [i](#)

Fourier-Shell Correlation (FSC) is the most commonly used method to estimate the resolution of single-particle and subtomogram-averaged maps. The shape of the curve depends on the imposed symmetry, mask and whether or not the two 3D reconstructions used were processed from a common reference. The reported resolution is shown as a black line. A curve is displayed for the half-bit criterion in addition to lines showing the 0.143 gold standard cut-off and 0.5 cut-off.

8.1 FSC [i](#)



*Reported resolution corresponds to spatial frequency of 0.417 Å⁻¹

8.2 Resolution estimates [i](#)

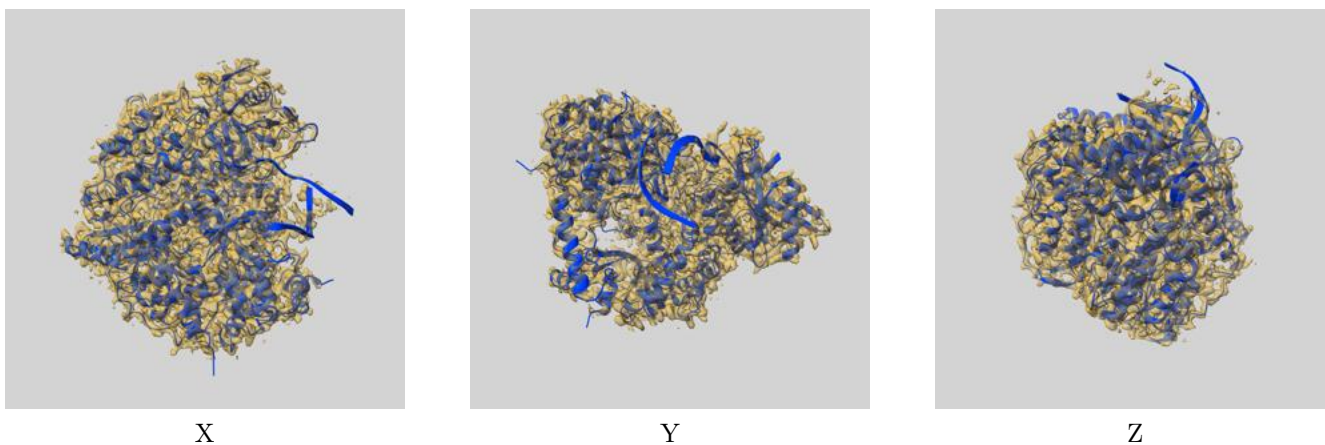
Resolution estimate (Å)	Estimation criterion (FSC cut-off)		
	0.143	0.5	Half-bit
Reported by author	2.40	-	-
Author-provided FSC curve	2.38	2.70	2.45
Unmasked-calculated*	2.86	3.36	2.94

*Resolution estimate based on FSC curve calculated by comparison of deposited half-maps. The value from deposited half-maps intersecting FSC 0.143 CUT-OFF 2.86 differs from the reported value 2.4 by more than 10 %

9 Map-model fit [i](#)

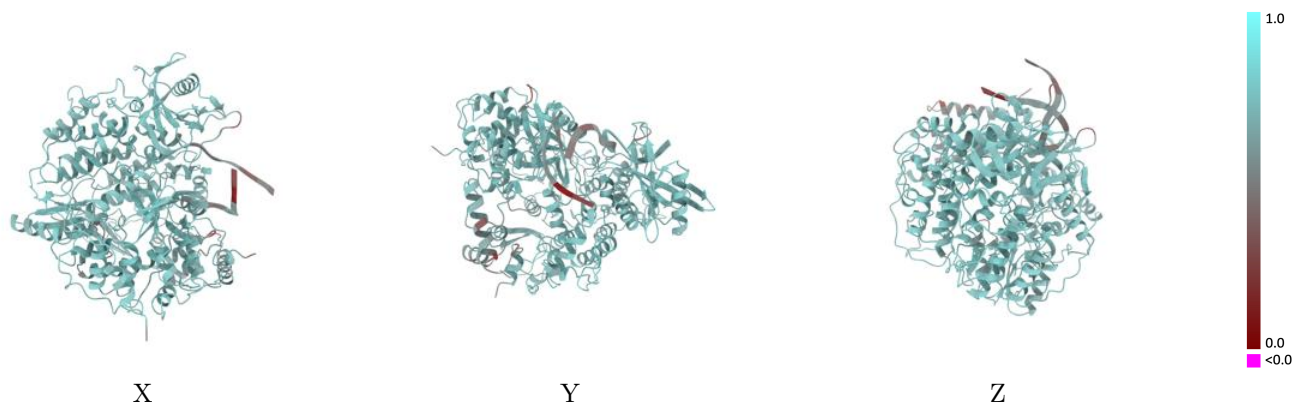
This section contains information regarding the fit between EMDB map EMD-17858 and PDB model 8PSO. Per-residue inclusion information can be found in section 3 on page 6.

9.1 Map-model overlay [i](#)



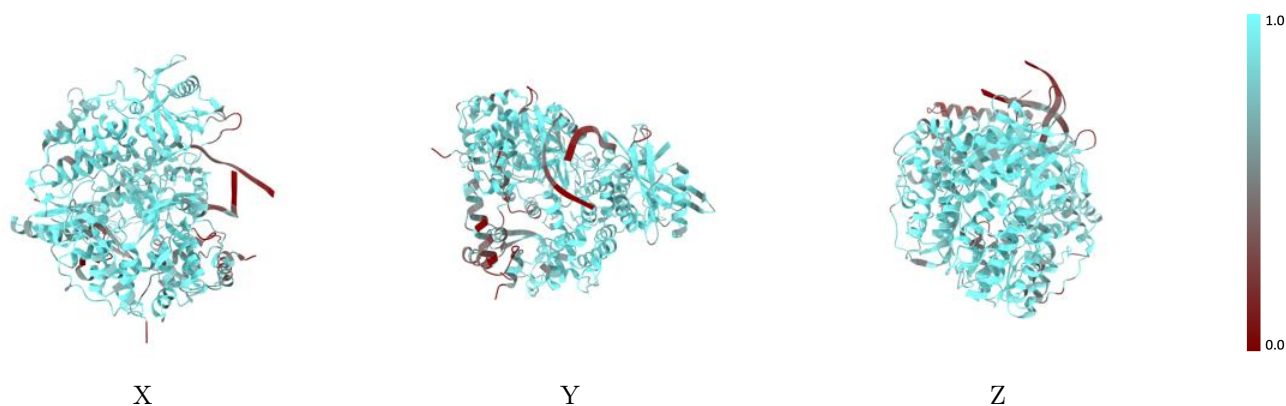
The images above show the 3D surface view of the map at the recommended contour level 0.035 at 50% transparency in yellow overlaid with a ribbon representation of the model coloured in blue. These images allow for the visual assessment of the quality of fit between the atomic model and the map.

9.2 Q-score mapped to coordinate model [\(i\)](#)



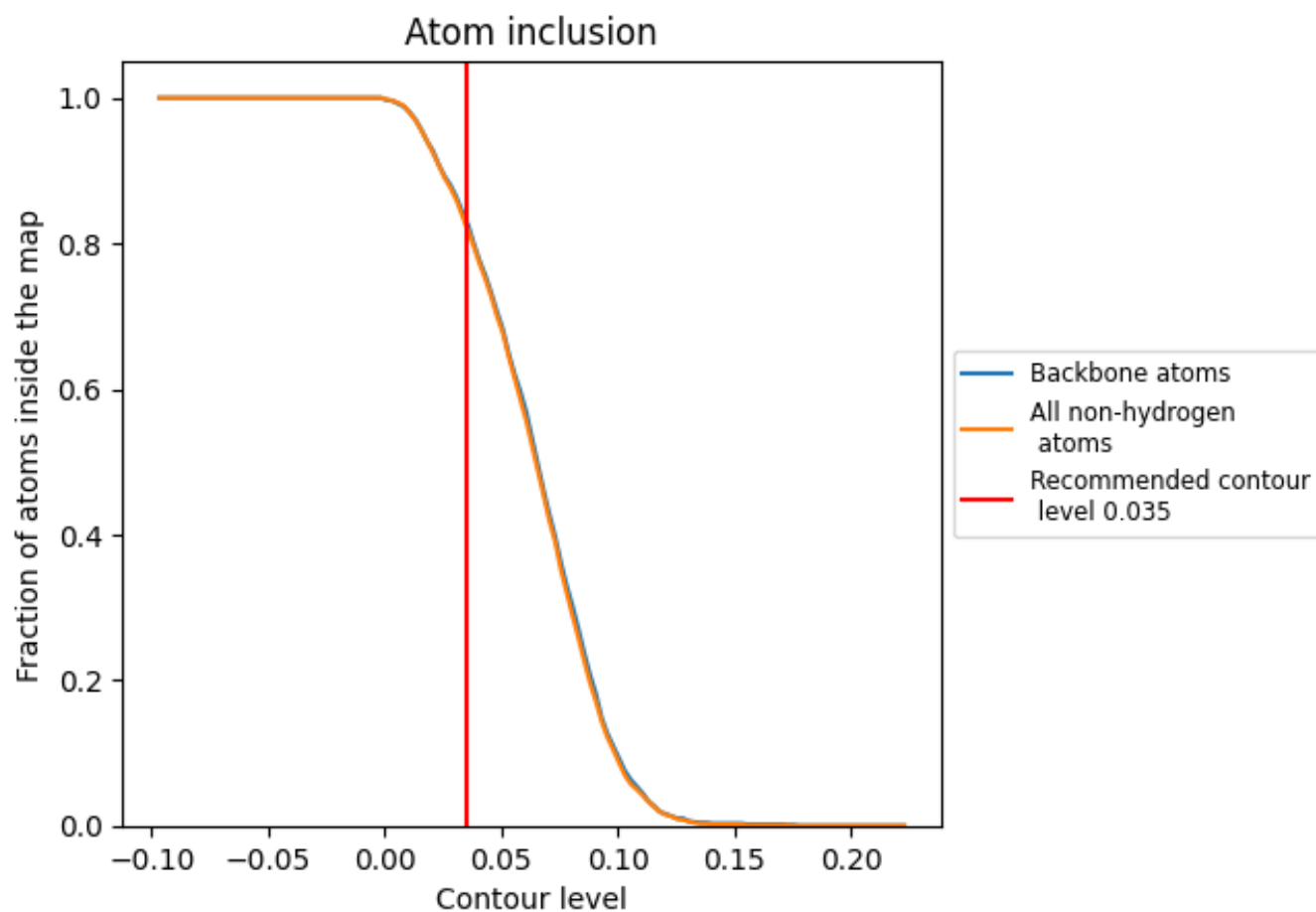
The images above show the model with each residue coloured according to its Q-score. This shows their resolvability in the map with higher Q-score values reflecting better resolvability. Please note: Q-score is calculating the resolvability of atoms, and thus high values are only expected at resolutions at which atoms can be resolved. Low Q-score values may therefore be expected for many entries.

9.3 Atom inclusion mapped to coordinate model [\(i\)](#)



The images above show the model with each residue coloured according to its atom inclusion. This shows to what extent they are inside the map at the recommended contour level (0.035).



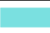











9.4 Atom inclusion [i](#)



At the recommended contour level, 83% of all backbone atoms, 82% of all non-hydrogen atoms, are inside the map.

9.5 Map-model fit summary

The table lists the average atom inclusion at the recommended contour level (0.035) and Q-score for the entire model and for each chain.

Chain	Atom inclusion	Q-score
All	 0.8240	 0.6790
A	 0.8810	 0.6990
B	 0.8450	 0.6860
C	 0.7710	 0.6670
F	 0.9310	 0.6900
S	 0.6490	 0.5590
V	 0.6120	 0.5790

